

Data Path : Z:\voasrv\HPCHEM1\MSVOA_N\Data\VN091721\
 Data File : VN068547.D
 Acq On : 18 Sep 2021 3:57
 Operator : JC/MD
 Sample : M3770-05
 Misc : 6.76g/5mL/100uL/5.00mL/MSVOA_N/MEOH
 ALS Vial : 41 Sample Multiplier: 1

Instrument :
 MSVOA_N
 ClientSampleId :
 NAPL-5-SIDEWALL-END-POINT-(10-

Quant Time: Sep 20 06:01:03 2021
 Quant Method : Z:\voasrv\HPCHEM1\MSVOA_N\methods\82N090721W.M
 Quant Title : SW846 8260
 QLast Update : Fri Sep 17 11:02:11 2021
 Response via : Initial Calibration

Compound	R.T.	QIon	Response	Conc	Units	Dev(Min)
Internal Standards						
1) Pentafluorobenzene	8.083	168	632805	50.000	ug/l	0.00
34) 1,4-Difluorobenzene	8.968	114	800488	50.000	ug/l	0.00
63) Chlorobenzene-d5	11.749	117	833307	50.000	ug/l	0.00
72) 1,4-Dichlorobenzene-d4	13.678	152	459446	50.000	ug/l	0.00
System Monitoring Compounds						
33) 1,2-Dichloroethane-d4	8.434	65	255576	44.029	ug/l	0.00
Spiked Amount	50.000	Range 61 - 141	Recovery	=	88.060%	
35) Dibromofluoromethane	8.019	113	248240	51.417	ug/l	0.00
Spiked Amount	50.000	Range 69 - 133	Recovery	=	102.840%	
50) Toluene-d8	10.443	98	952658	48.246	ug/l	0.00
Spiked Amount	50.000	Range 65 - 126	Recovery	=	96.500%	
62) 4-Bromofluorobenzene	12.734	95	364780	55.398	ug/l	0.00
Spiked Amount	50.000	Range 58 - 135	Recovery	=	110.800%	
Target Compounds						
3) Chloromethane	2.295	50	474	Below Cal	#	84
4) Vinyl Chloride	2.445	62	36275	4.630	ug/l	100
5) Bromomethane	2.850	94	429	Below Cal	#	51
11) Tert butyl alcohol	5.315	59	16606	8.136	ug/l	# 84
16) Acetone	4.291	43	999	Below Cal	#	82
18) Methyl Acetate	4.854	43	7981	Below Cal	#	73
20) Methylene Chloride	5.074	84	5523	Below Cal		90
21) trans-1,2-Dichloroethene	5.581	96	27394	4.826	ug/l	96
25) 2-Butanone	7.345	43	3100	1.099	ug/l	# 1
27) cis-1,2-Dichloroethene	7.319	96	4693631	704.058	ug/l	89
31) Cyclohexane	8.078	56	9198	1.046	ug/l	# 37
36) 1,1-Dichloropropene	8.083	75	32888	4.928	ug/l	# 49
38) Carbon Tetrachloride	8.083	117	51138	6.396	ug/l	# 16
44) Trichloroethene	9.215	130	2739304	437.963	ug/l	99
51) 4-Methyl-2-Pentanone	10.341	43	1191	0.233	ug/l	# 33
52) Toluene	10.507	92	13914	1.062	ug/l	93
55) 1,1,2-Trichloroethane	10.980	97	162472	31.236	ug/l	# 6
59) 2-Hexanone	11.095	43	793	0.232	ug/l	68
67) Ethyl Benzene	11.846	91	37905	1.353	ug/l	99
68) m/p-Xylenes	11.956	106	41996	3.722	ug/l	94
69) o-Xylene	12.283	106	42169	3.836	ug/l	98
70) Styrene	12.283	104	2810	1.894	ug/l	# 1
71) Bromoform	12.734	173	2312	2.872	ug/l	# 1
73) Isopropylbenzene	12.583	105	43834	1.341	ug/l	98
74) N-ethyl acetate	12.369	43	18373	2.520	ug/l	# 62
75) 1,1,2,2-Tetrachloroethane	12.897	83	4835	0.528	ug/l	# 26
76) 1,2,3-Trichloropropane	12.734	75	176755	27.481	ug/l	# 1
78) n-propylbenzene	12.924	91	110343	3.197	ug/l	100
79) 2-Chlorotoluene	13.018	91	10763	0.506	ug/l	# 35
80) 1,3,5-Trimethylbenzene	13.061	105	286141	10.777	ug/l	99
81) trans-1,4-Dichloro-2-b...	12.734	75	176755	85.260	ug/l	# 14
82) 4-Chlorotoluene	13.061	91	29309	1.429	ug/l	# 38
83) tert-Butylbenzene	13.326	119	11784	0.486	ug/l	96
84) 1,2,4-Trimethylbenzene	13.372	105	1010005	39.664	ug/l	100
85) sec-Butylbenzene	13.506	105	45174	1.413	ug/l	# 65
86) p-Isopropyltoluene	13.619	119	95248	3.530	ug/l	96

Data Path : Z:\voasrv\HPCHEM1\MSVOA_N\Data\VN091721\
 Data File : VN068547.D
 Acq On : 18 Sep 2021 3:57
 Operator : JC/MD
 Sample : M3770-05
 Misc : 6.76g/5mL/100uL/5.00mL/MSVOA_N/MEOH
 ALS Vial : 41 Sample Multiplier: 1

Instrument :
 MSVOA_N
 ClientSampleId :
 NAPL-5-SIDEWALL-END-POINT-(10-

Quant Time: Sep 20 06:01:03 2021
 Quant Method : Z:\voasrv\HPCHEM1\MSVOA_N\methods\82N090721W.M
 Quant Title : SW846 8260
 QLast Update : Fri Sep 17 11:02:11 2021
 Response via : Initial Calibration

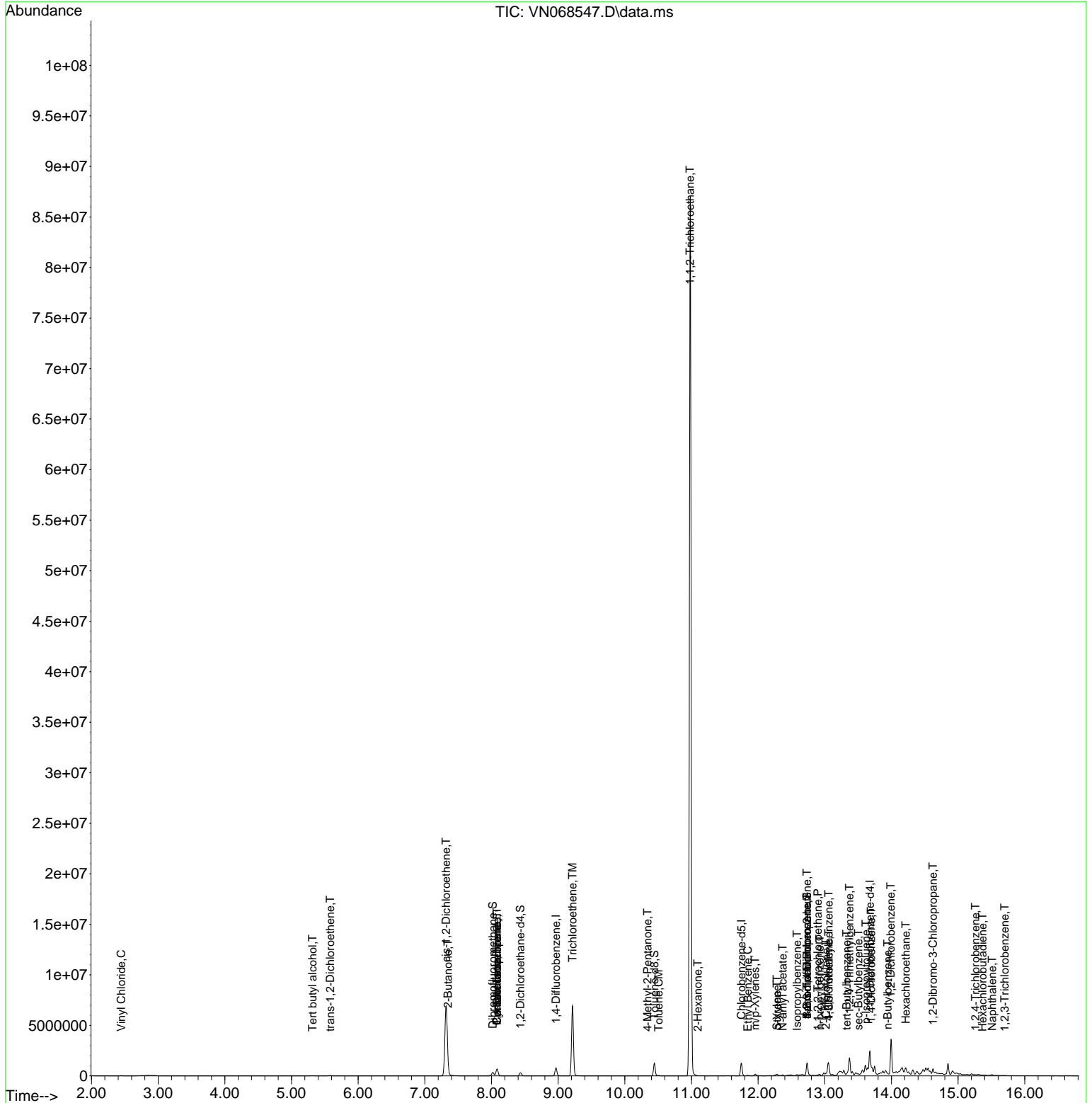
Compound	R.T.	QIon	Response	Conc	Units	Dev(Min)
88) 1,4-Dichlorobenzene	13.696	146	5224	0.338	ug/l #	1
89) n-Butylbenzene	13.943	91	40660	2.069	ug/l #	70
90) Hexachloroethane	14.217	117	13450	2.840	ug/l #	1
91) 1,2-Dichlorobenzene	13.991	146	3644	0.241	ug/l #	1
92) 1,2-Dibromo-3-Chloropr...	14.622	75	665	0.457	ug/l #	15
93) 1,2,4-Trichlorobenzene	15.260	180	811	3.048	ug/l #	1
94) Hexachlorobutadiene	15.367	225	1207	0.270	ug/l	82
95) Naphthalene	15.509	128	77841	7.477	ug/l	97
96) 1,2,3-Trichlorobenzene	15.700	180	1051	3.096	ug/l #	81

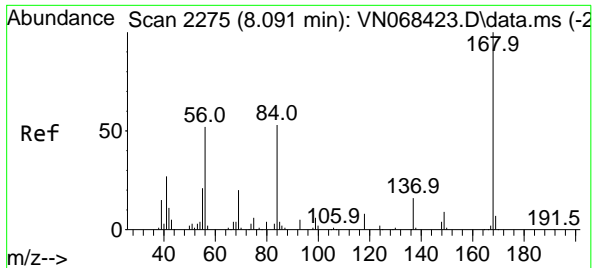
(#) = qualifier out of range (m) = manual integration (+) = signals summed

Data Path : Z:\voasrv\HPCHEM1\MSVOA_N\Data\VN091721\
 Data File : VN068547.D
 Acq On : 18 Sep 2021 3:57
 Operator : JC/MD
 Sample : M3770-05
 Misc : 6.76g/5mL/100uL/5.00mL/MSVOA_N/MEOH
 ALS Vial : 41 Sample Multiplier: 1

Instrument :
 MSVOA_N
Client Sampled :
 NAPL-5-SIDEWALL-END-POINT-(10-

Quant Time: Sep 20 06:01:03 2021
 Quant Method : Z:\voasrv\HPCHEM1\MSVOA_N\methods\82N090721W.M
 Quant Title : SW846 8260
 QLast Update : Fri Sep 17 11:02:11 2021
 Response via : Initial Calibration

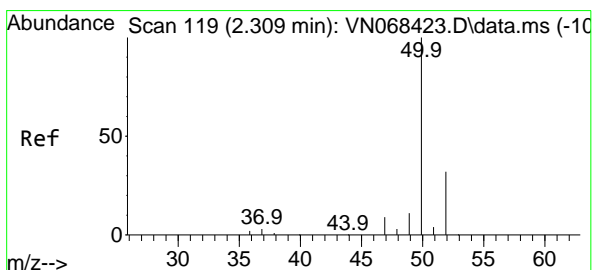
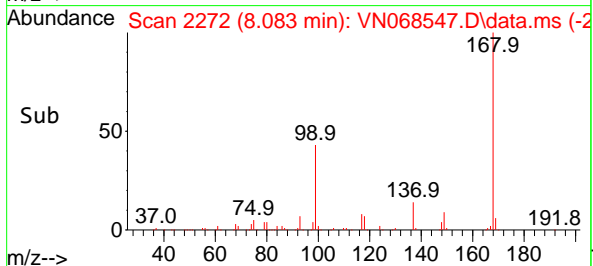
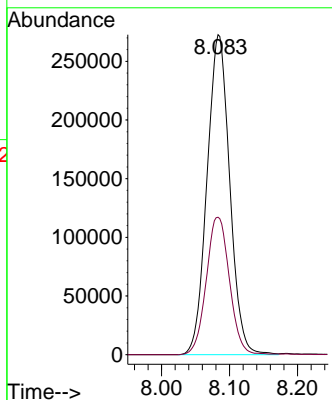
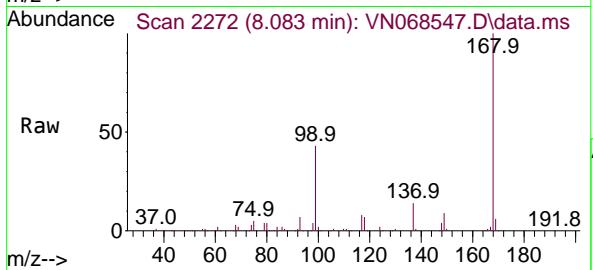




#1
 Pentafluorobenzene
 Concen: 50.000 ug/l
 RT: 8.083 min Scan# 2272
 Delta R.T. -0.008 min
 Lab File: VN068547.D
 Acq: 18 Sep 2021 3:57

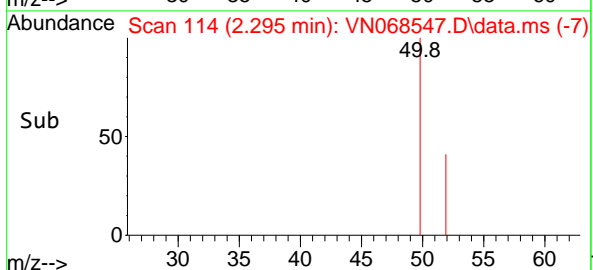
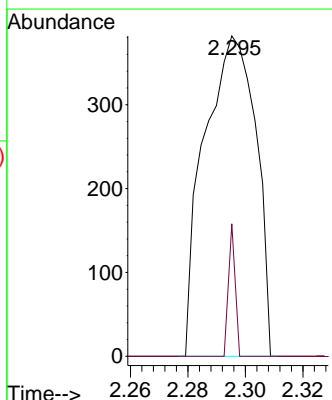
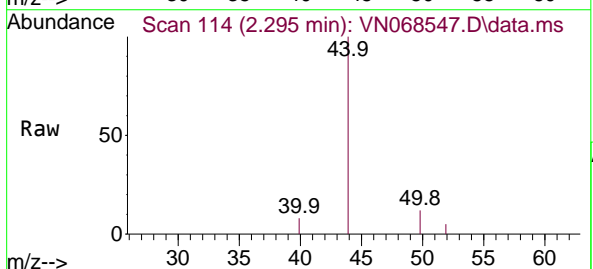
Instrument :
 MSVOA_N
Client Sampled :
 NAPL-5-SIDEWALL-END-POINT-(10-

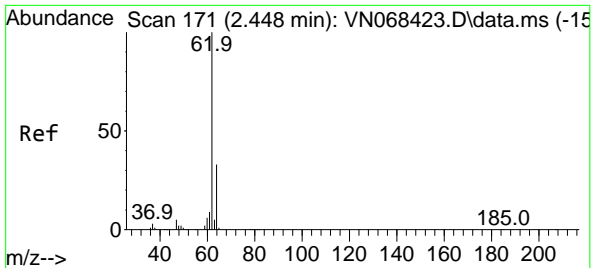
Tgt Ion: 168 Resp: 632805
 Ion Ratio Lower Upper
 168 100
 99 42.9 38.2 57.4



#3
 Chloromethane
 Concen: Below Cal
 RT: 2.295 min Scan# 114
 Delta R.T. -0.014 min
 Lab File: VN068547.D
 Acq: 18 Sep 2021 3:57

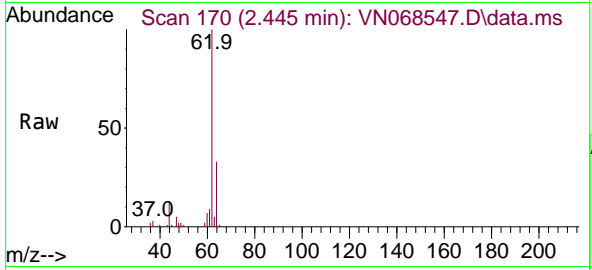
Tgt Ion: 50 Resp: 474
 Ion Ratio Lower Upper
 50 100
 52 41.4 25.8 38.6#



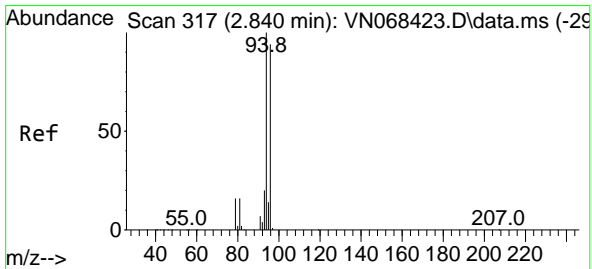
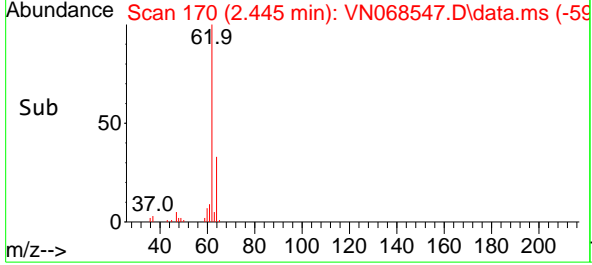
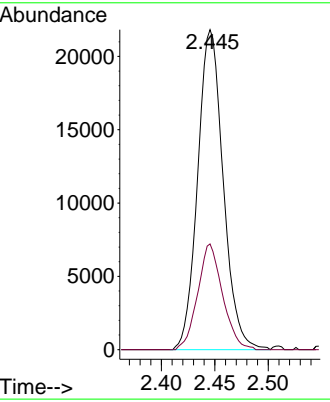


#4
 Vinyl Chloride
 Concen: 4.630 ug/l
 RT: 2.445 min Scan# 170
 Delta R.T. -0.003 min
 Lab File: VN068547.D
 Acq: 18 Sep 2021 3:57

Instrument :
 MSVOA_N
 ClientSampled :
 NAPL-5-SIDEWALL-END-POINT-(10-

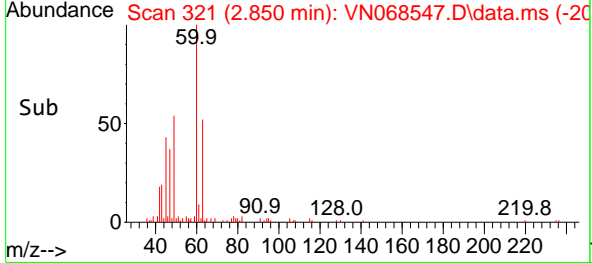
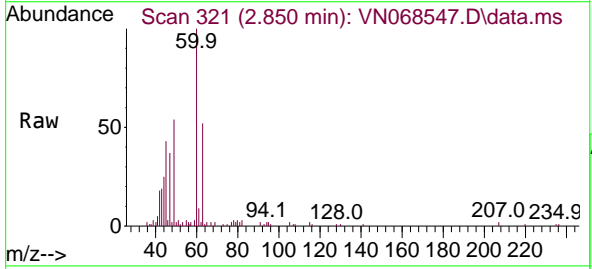
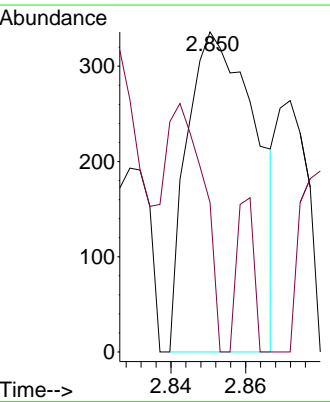


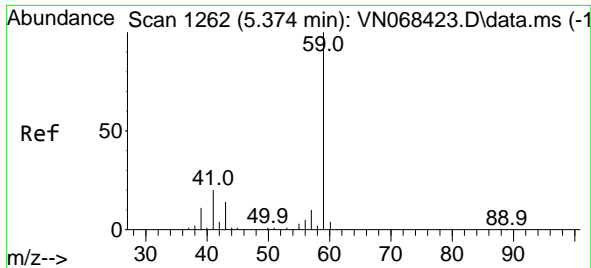
Tgt Ion: 62 Resp: 36275
 Ion Ratio Lower Upper
 62 100
 64 33.0 26.3 39.5



#5
 Bromomethane
 Concen: Below Cal
 RT: 2.850 min Scan# 321
 Delta R.T. 0.010 min
 Lab File: VN068547.D
 Acq: 18 Sep 2021 3:57

Tgt Ion: 94 Resp: 429
 Ion Ratio Lower Upper
 94 100
 96 46.7 75.4 113.0#

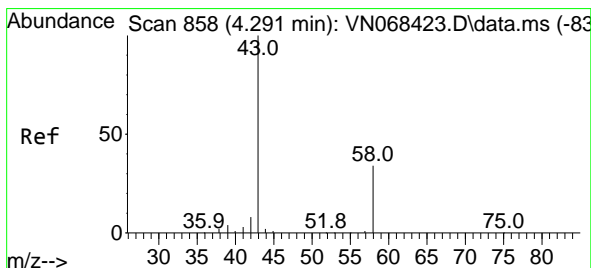
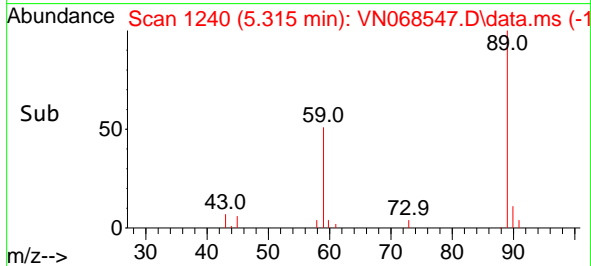
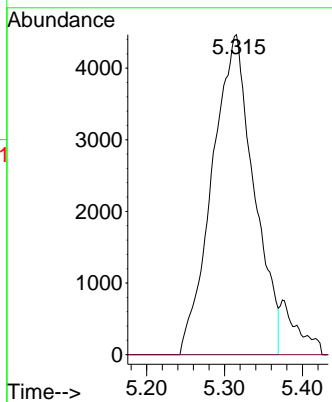
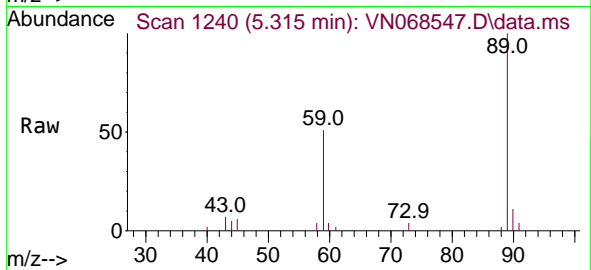




#11
 Tert butyl alcohol
 Concen: 8.136 ug/l
 RT: 5.315 min Scan# 1240
 Delta R.T. -0.059 min
 Lab File: VN068547.D
 Acq: 18 Sep 2021 3:57

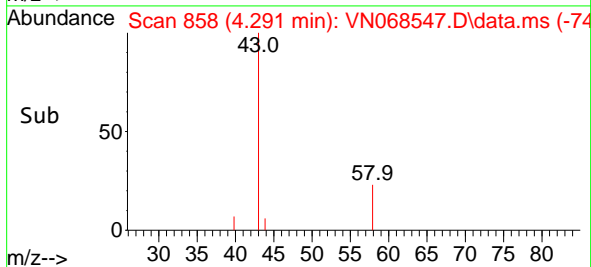
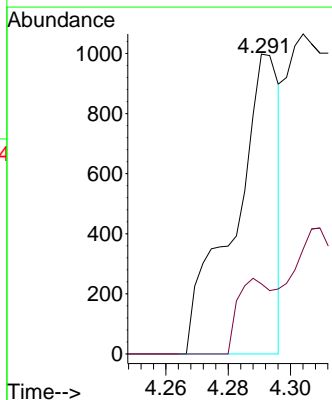
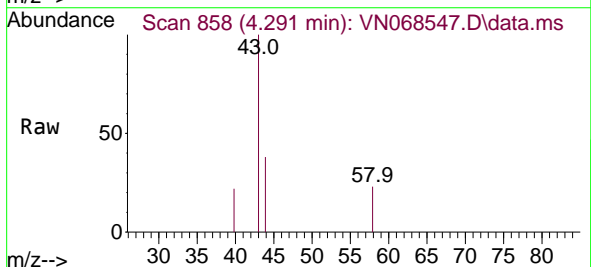
Instrument :
 MSVOA_N
 ClientSampled :
 NAPL-5-SIDEWALL-END-POINT-(10-

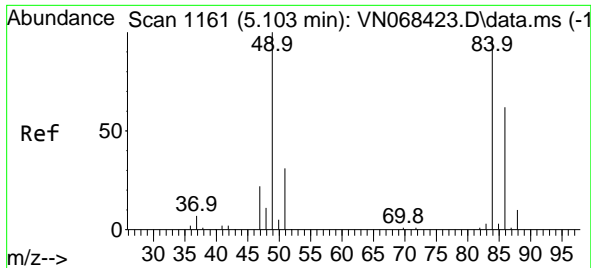
Tgt Ion: 59 Resp: 16606
 Ion Ratio Lower Upper
 59 100
 57 0.0 4.3 6.5#



#16
 Acetone
 Concen: Below Cal
 RT: 4.291 min Scan# 858
 Delta R.T. -0.000 min
 Lab File: VN068547.D
 Acq: 18 Sep 2021 3:57

Tgt Ion: 43 Resp: 999
 Ion Ratio Lower Upper
 43 100
 58 23.3 27.0 40.6#



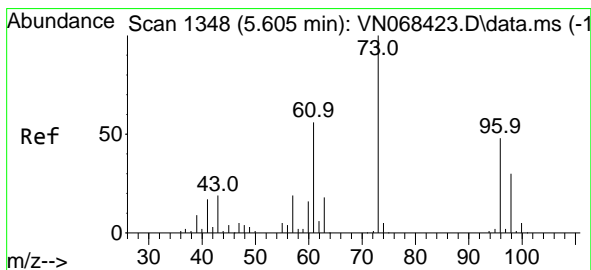
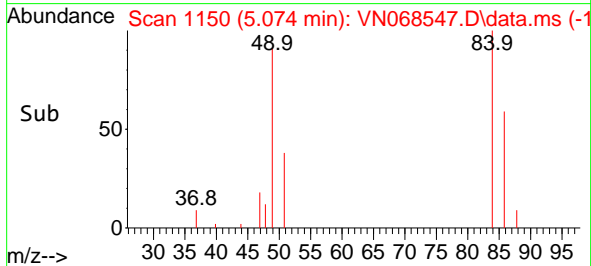
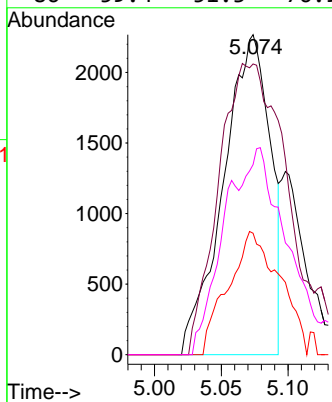
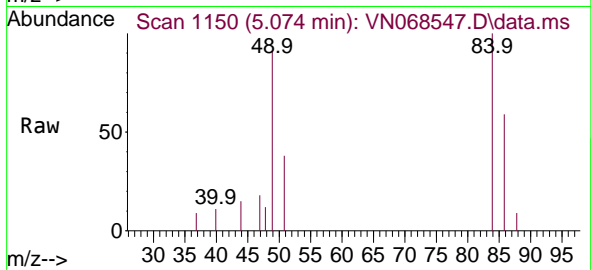


#20
 Methylene Chloride
 Concen: Below Cal
 RT: 5.074 min Scan# 1150
 Delta R.T. -0.029 min
 Lab File: VN068547.D
 Acq: 18 Sep 2021 3:57

Instrument :
 MSVOA_N
 ClientSampled :
 NAPL-5-SIDEWALL-END-POINT-(10-

Tgt Ion: 84 Resp: 5523

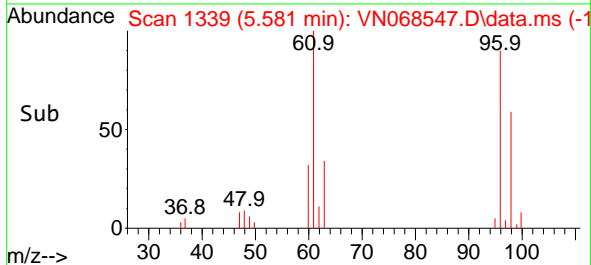
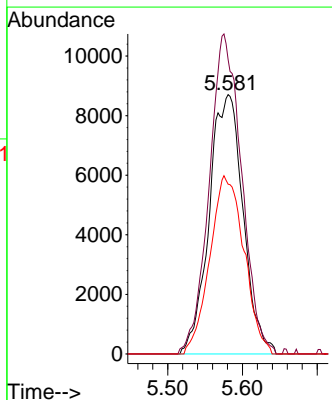
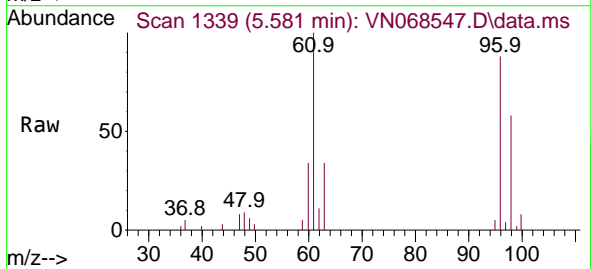
Ion	Ratio	Lower	Upper
84	100		
49	90.9	83.0	124.6
51	38.0	25.4	38.0
86	59.4	51.3	76.9

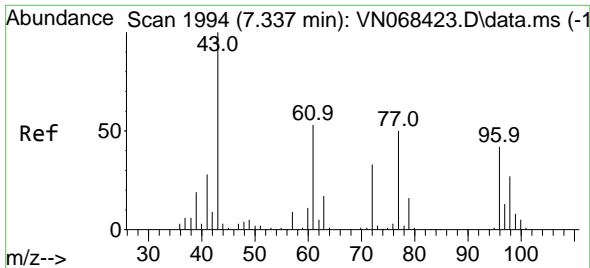


#21
 trans-1,2-Dichloroethene
 Concen: 4.826 ug/l
 RT: 5.581 min Scan# 1339
 Delta R.T. -0.024 min
 Lab File: VN068547.D
 Acq: 18 Sep 2021 3:57

Tgt Ion: 96 Resp: 27394

Ion	Ratio	Lower	Upper
96	100		
61	113.5	94.6	142.0
98	65.5	50.2	75.4

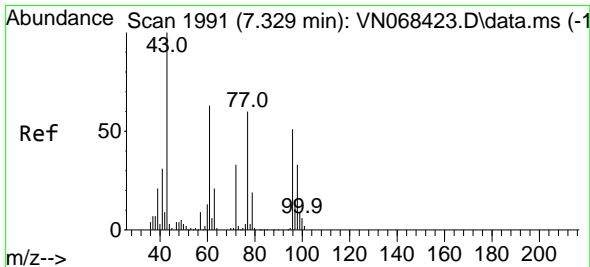
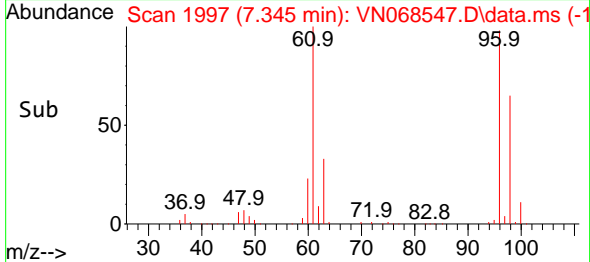
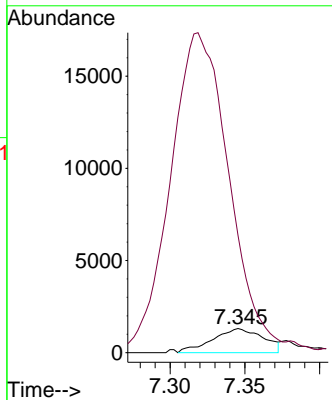
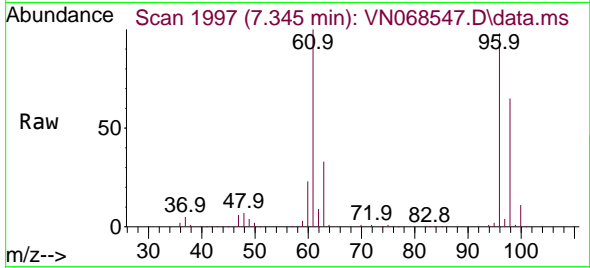




#25
 2-Butanone
 Concen: 1.099 ug/l
 RT: 7.345 min Scan# 1997
 Delta R.T. 0.008 min
 Lab File: VN068547.D
 Acq: 18 Sep 2021 3:57

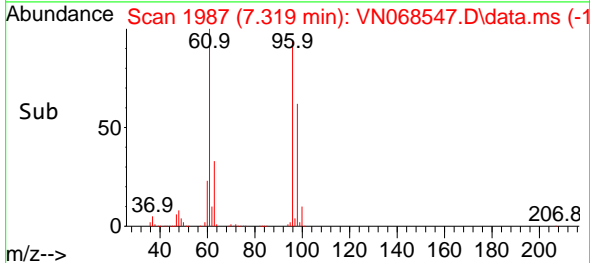
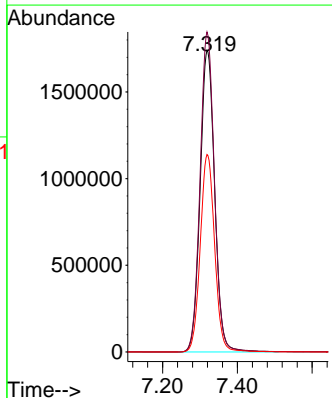
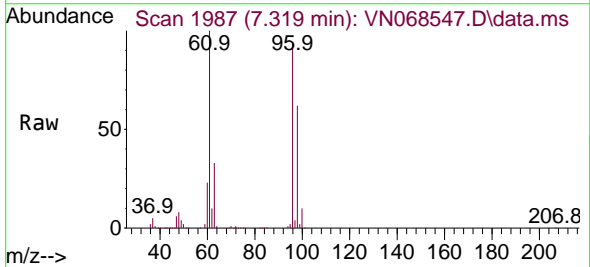
Instrument :
 MSVOA_N
 ClientSampled :
 NAPL-5-SIDEWALL-END-POINT-(10-

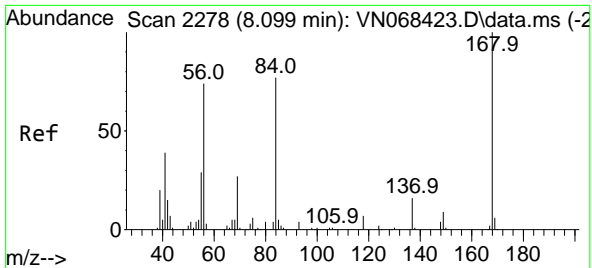
Tgt Ion: 43 Resp: 3100
 Ion Ratio Lower Upper
 43 100
 72 432.1 26.7 40.1#



#27
 cis-1,2-Dichloroethene
 Concen: 704.058 ug/l
 RT: 7.319 min Scan# 1987
 Delta R.T. -0.010 min
 Lab File: VN068547.D
 Acq: 18 Sep 2021 3:57

Tgt Ion: 96 Resp: 4693631
 Ion Ratio Lower Upper
 96 100
 61 105.1 0.0 246.4
 98 65.0 0.0 130.4

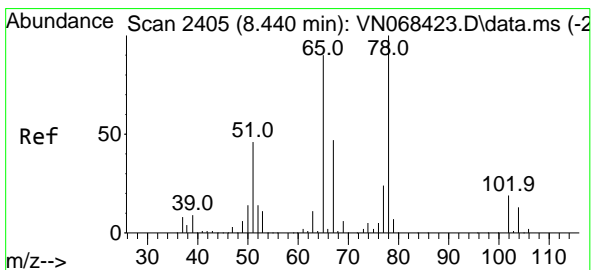
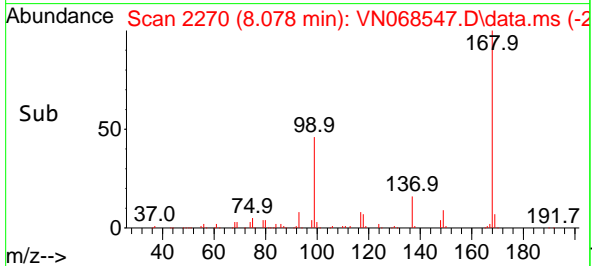
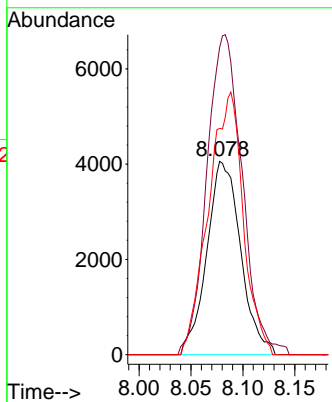
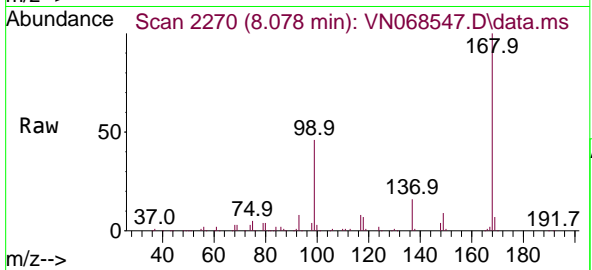




#31
 Cyclohexane
 Concen: 1.046 ug/l
 RT: 8.078 min Scan# 2270
 Delta R.T. -0.021 min
 Lab File: VN068547.D
 Acq: 18 Sep 2021 3:57

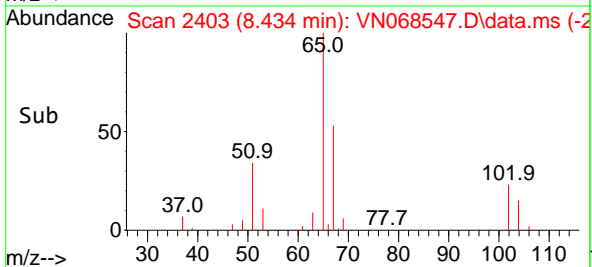
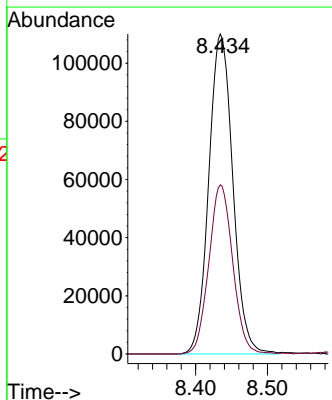
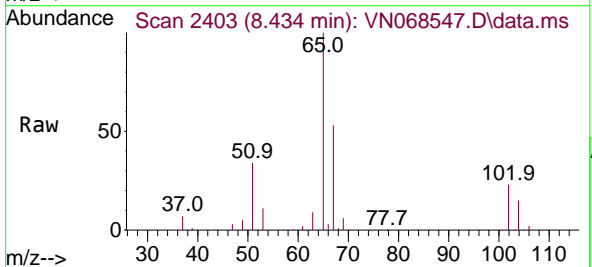
Instrument :
 MSVOA_N
 ClientSampled :
 NAPL-5-SIDEWALL-END-POINT-(10-

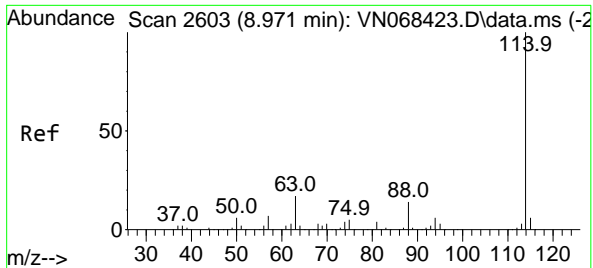
Tgt Ion	Resp	Lower	Upper
56	100		
69	158.9	29.4	44.0#
84	117.0	83.6	125.4



#33
 1,2-Dichloroethane-d4
 Concen: 44.029 ug/l
 RT: 8.434 min Scan# 2403
 Delta R.T. -0.006 min
 Lab File: VN068547.D
 Acq: 18 Sep 2021 3:57

Tgt Ion	Resp	Lower	Upper
65	100		
67	52.5	0.0	104.0

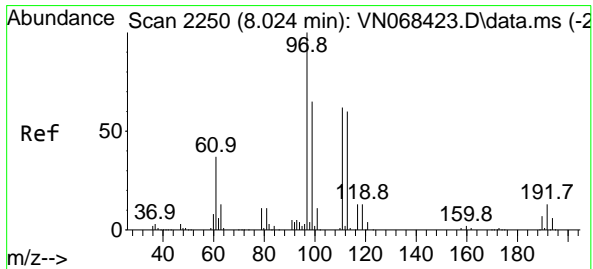
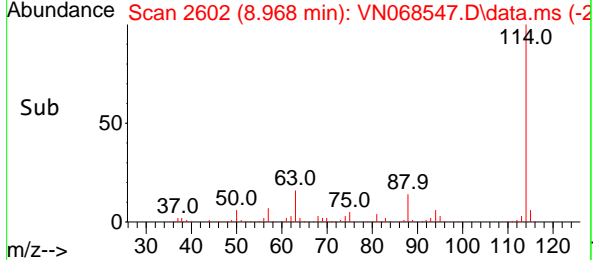
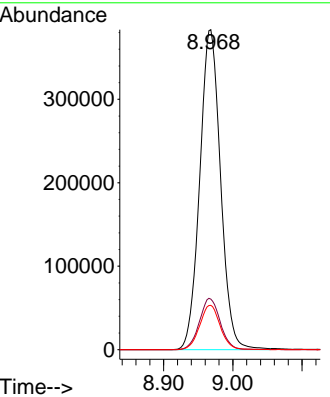
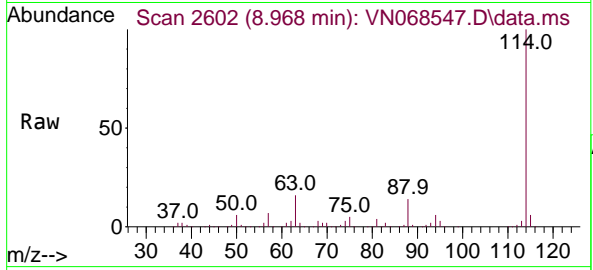




#34
 1,4-Difluorobenzene
 Concen: 50.000 ug/l
 RT: 8.968 min Scan# 2602
 Delta R.T. -0.003 min
 Lab File: VN068547.D
 Acq: 18 Sep 2021 3:57

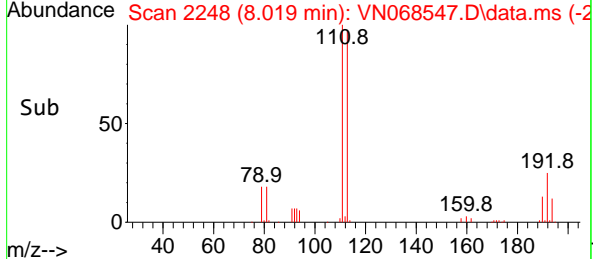
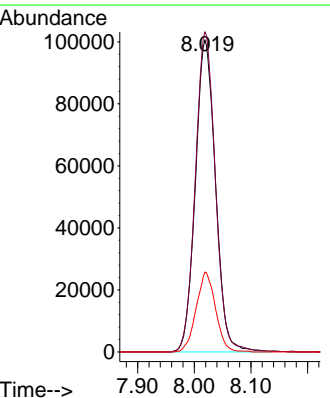
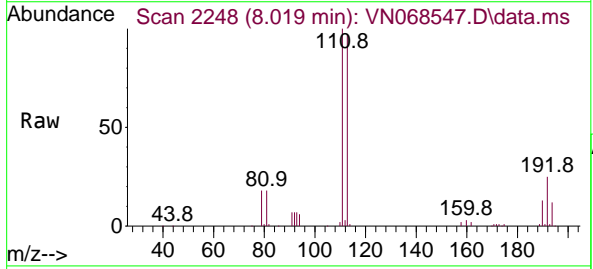
Instrument :
 MSVOA_N
 ClientSampled :
 NAPL-5-SIDEWALL-END-POINT-(10-

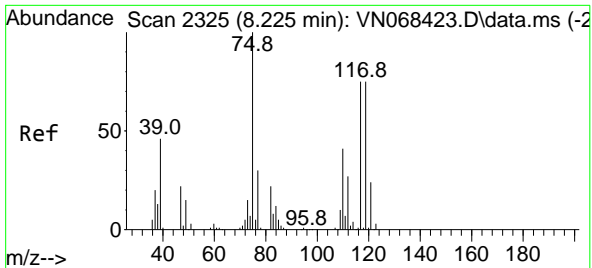
Tgt Ion	Resp	Lower	Upper
114	100		
63	15.8	0.0	33.2
88	13.8	0.0	28.4



#35
 Dibromofluoromethane
 Concen: 51.417 ug/l
 RT: 8.019 min Scan# 2248
 Delta R.T. -0.005 min
 Lab File: VN068547.D
 Acq: 18 Sep 2021 3:57

Tgt Ion	Resp	Lower	Upper
113	100		
111	102.1	81.1	121.7
192	24.7	17.7	26.5

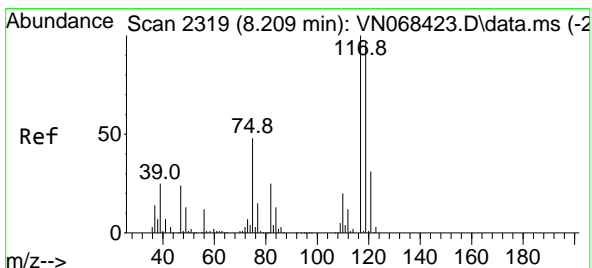
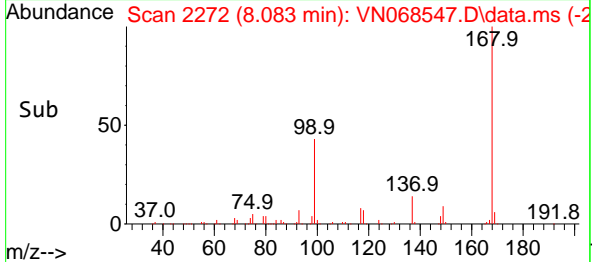
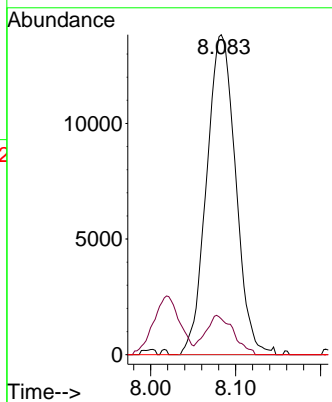
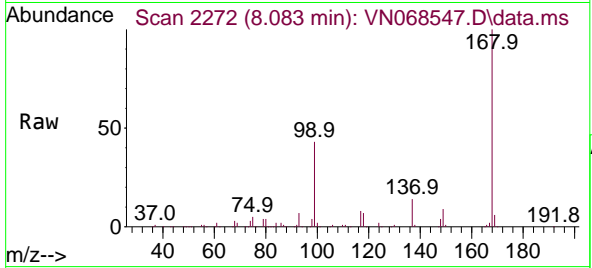




#36
 1,1-Dichloropropene
 Concen: 4.928 ug/l
 RT: 8.083 min Scan# 2272
 Delta R.T. -0.142 min
 Lab File: VN068547.D
 Acq: 18 Sep 2021 3:57

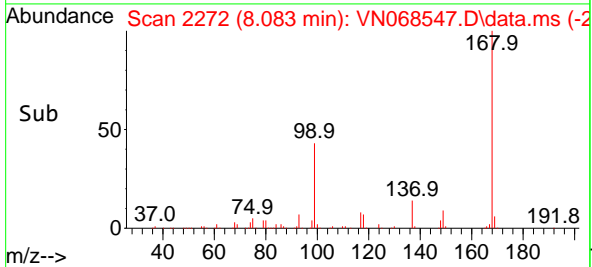
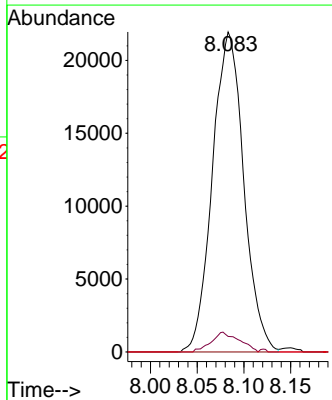
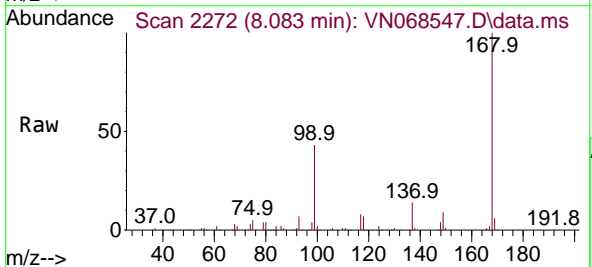
Instrument : MSVOA_N
 ClientSampled : NAPL-5-SIDEWALL-END-POINT-(10-

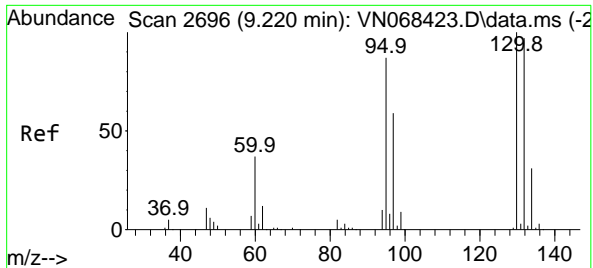
Tgt Ion	Resp	Lower	Upper
75	32888		
75	100		
110	11.9	20.8	62.5#
77	0.0	25.0	37.6#



#38
 Carbon Tetrachloride
 Concen: 6.396 ug/l
 RT: 8.083 min Scan# 2272
 Delta R.T. -0.126 min
 Lab File: VN068547.D
 Acq: 18 Sep 2021 3:57

Tgt Ion	Resp	Lower	Upper
117	51138		
117	100		
119	4.9	76.6	114.8#
121	0.0	24.5	36.7#

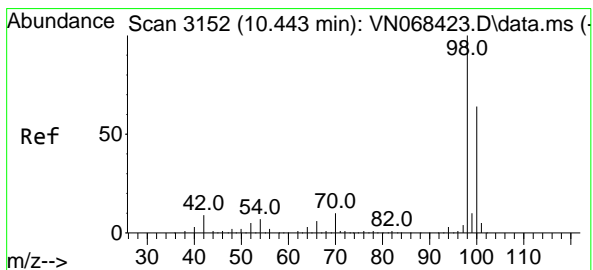
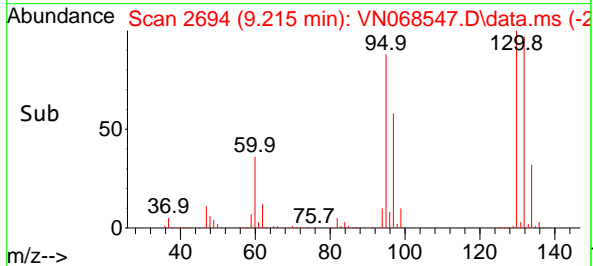
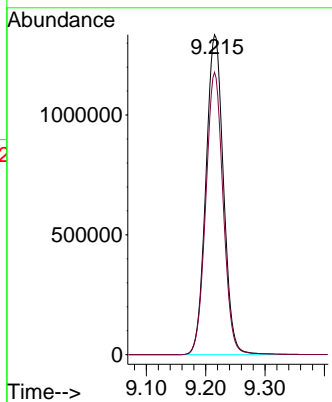
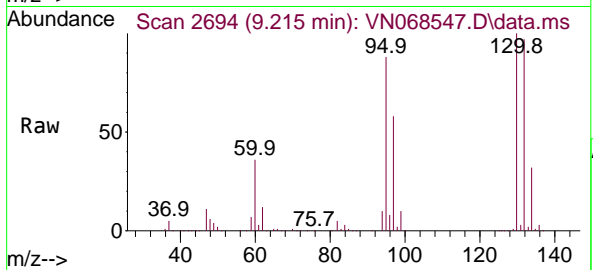




#44
 Trichloroethene
 Concen: 437.963 ug/l
 RT: 9.215 min Scan# 2694
 Delta R.T. -0.005 min
 Lab File: VN068547.D
 Acq: 18 Sep 2021 3:57

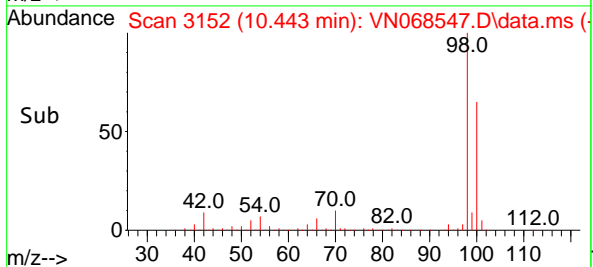
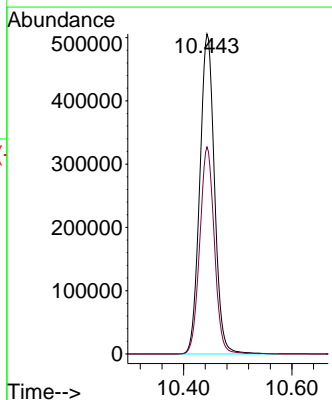
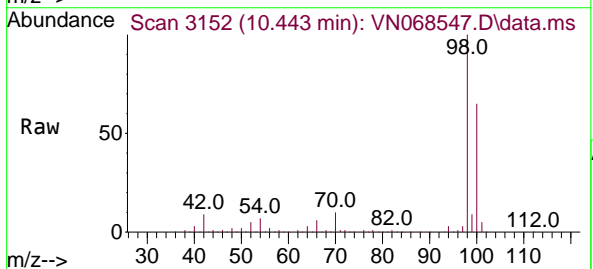
Instrument :
 MSVOA_N
 ClientSampled :
 NAPL-5-SIDEWALL-END-POINT-(10-

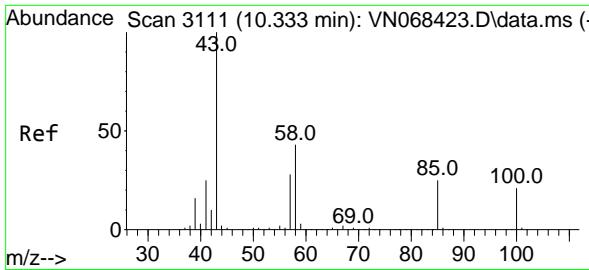
Tgt Ion:130 Resp: 2739304
 Ion Ratio Lower Upper
 130 100
 95 88.3 0.0 173.8



#50
 Toluene-d8
 Concen: 48.246 ug/l
 RT: 10.443 min Scan# 3152
 Delta R.T. 0.000 min
 Lab File: VN068547.D
 Acq: 18 Sep 2021 3:57

Tgt Ion: 98 Resp: 952658
 Ion Ratio Lower Upper
 98 100
 100 64.1 51.0 76.6

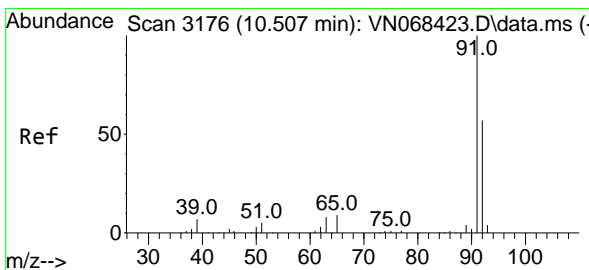
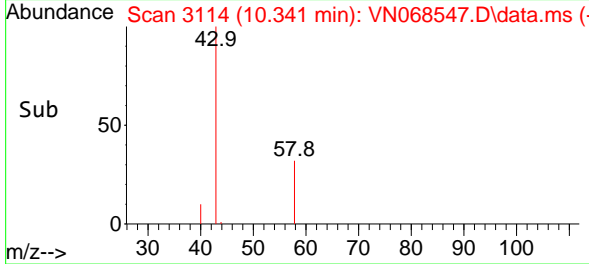
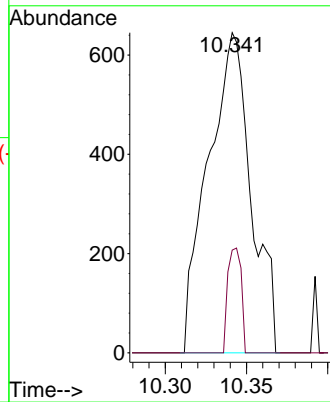
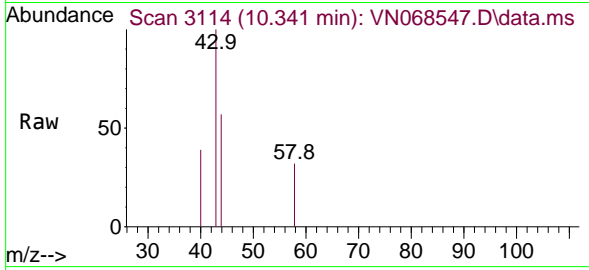




#51
 4-Methyl-2-Pentanone
 Concen: 0.233 ug/l
 RT: 10.341 min Scan# 3114
 Delta R.T. 0.008 min
 Lab File: VN068547.D
 Acq: 18 Sep 2021 3:57

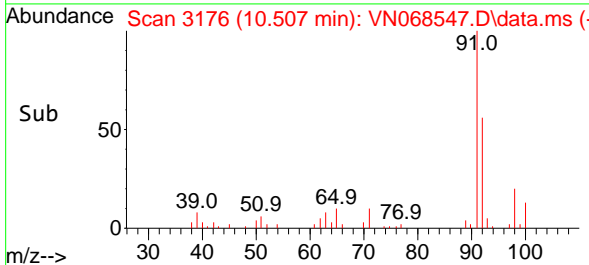
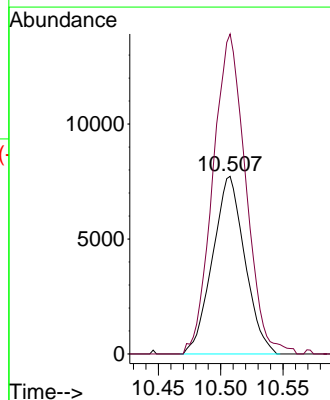
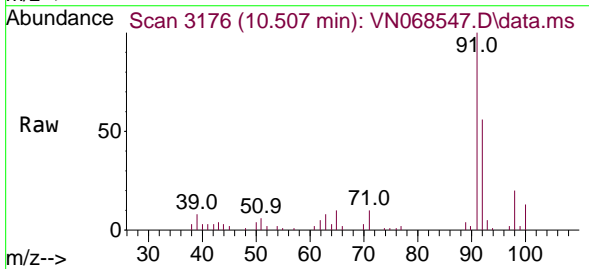
Instrument :
 MSVOA_N
 ClientSampled :
 NAPL-5-SIDEWALL-END-POINT-(10-

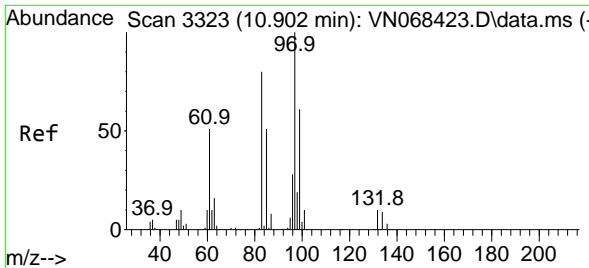
Tgt Ion: 43 Resp: 1191
 Ion Ratio Lower Upper
 43 100
 58 0.0 34.3 51.5#



#52
 Toluene
 Concen: 1.062 ug/l
 RT: 10.507 min Scan# 3176
 Delta R.T. 0.000 min
 Lab File: VN068547.D
 Acq: 18 Sep 2021 3:57

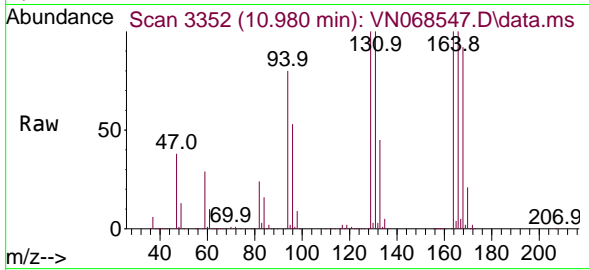
Tgt Ion: 92 Resp: 13914
 Ion Ratio Lower Upper
 92 100
 91 183.7 139.4 209.0





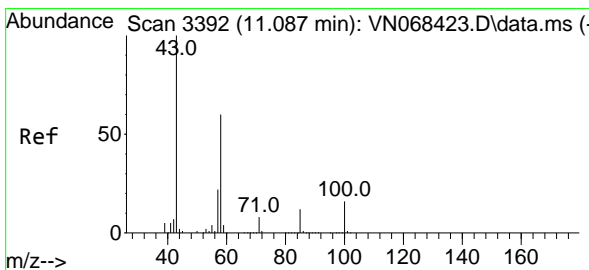
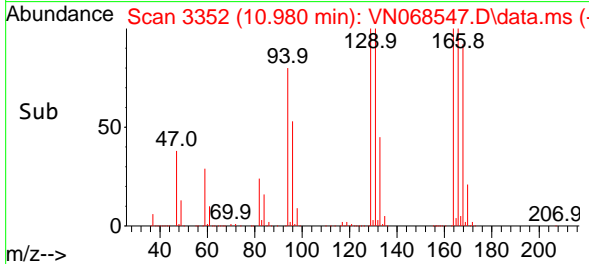
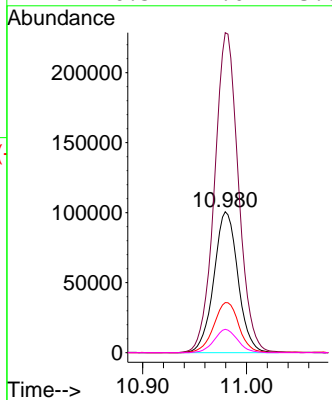
#55
 1,1,2-Trichloroethane
 Concen: 31.236 ug/l
 RT: 10.980 min Scan# 3352
 Delta R.T. 0.078 min
 Lab File: VN068547.D
 Acq: 18 Sep 2021 3:57

Instrument :
 MSVOA_N
ClientSampled :
 NAPL-5-SIDEWALL-END-POINT-(10-

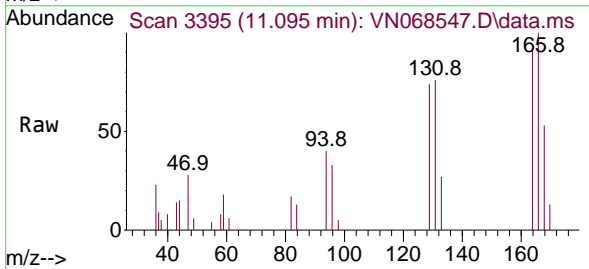


Tgt Ion: 97 Resp: 162472

Ion	Ratio	Lower	Upper
97	100		
83	227.1	63.7	95.5#
85	35.6	40.7	61.1#
99	16.5	49.0	73.6#

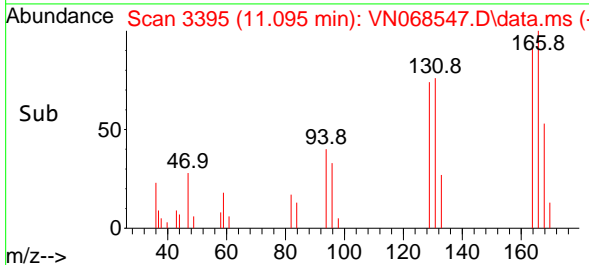
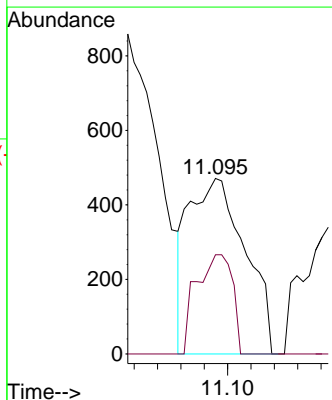


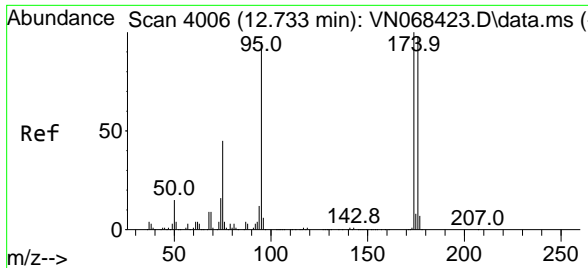
#59
 2-Hexanone
 Concen: 0.232 ug/l
 RT: 11.095 min Scan# 3395
 Delta R.T. 0.008 min
 Lab File: VN068547.D
 Acq: 18 Sep 2021 3:57



Tgt Ion: 43 Resp: 793

Ion	Ratio	Lower	Upper
43	100		
58	35.8	30.0	90.1

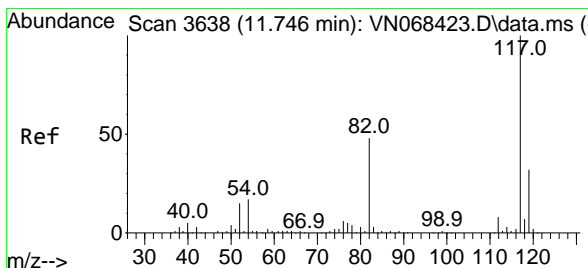
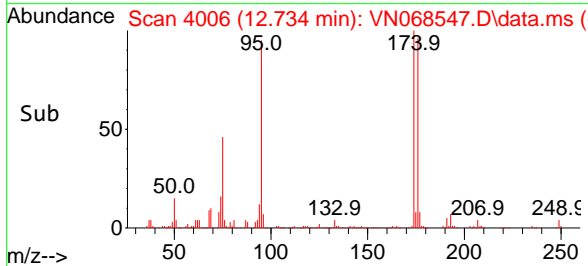
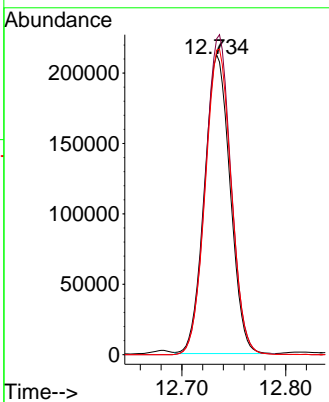
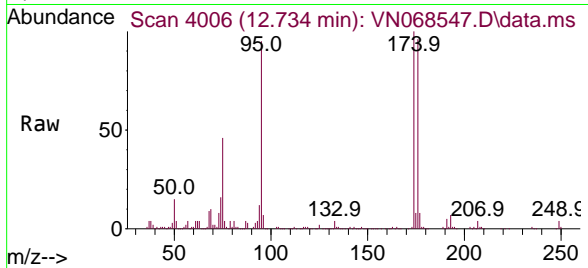




#62
 4-Bromofluorobenzene
 Concen: 55.398 ug/l
 RT: 12.734 min Scan# 4006
 Delta R.T. 0.001 min
 Lab File: VN068547.D
 Acq: 18 Sep 2021 3:57

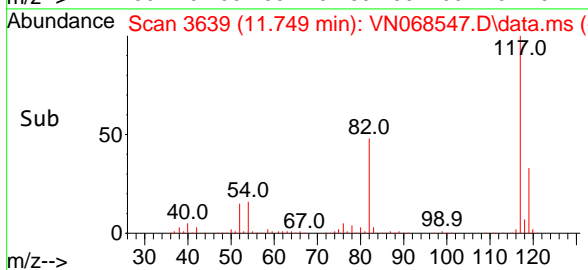
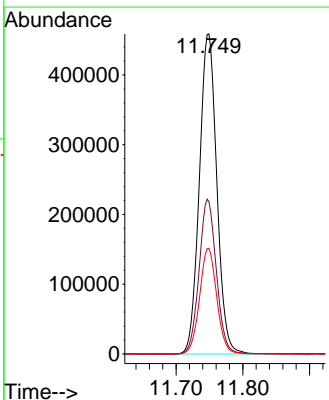
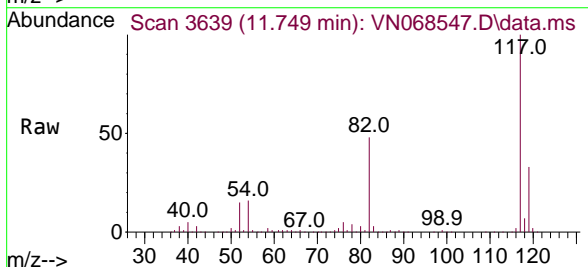
Instrument :
 MSVOA_N
 ClientSampled :
 NAPL-5-SIDEWALL-END-POINT-(10-

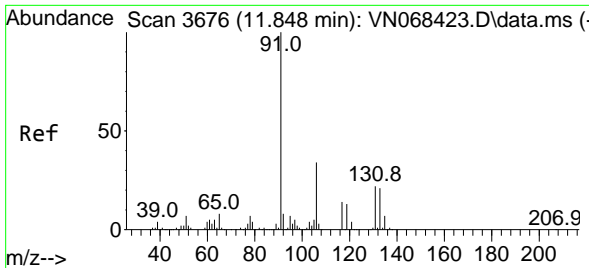
Tgt Ion	Resp	Lower	Upper
95	364780		
174	107.0	0.0	214.0
176	103.4	0.0	205.4



#63
 Chlorobenzene-d5
 Concen: 50.000 ug/l
 RT: 11.749 min Scan# 3639
 Delta R.T. 0.003 min
 Lab File: VN068547.D
 Acq: 18 Sep 2021 3:57

Tgt Ion	Resp	Lower	Upper
117	833307		
82	47.5	38.7	58.1
119	33.0	25.5	38.3

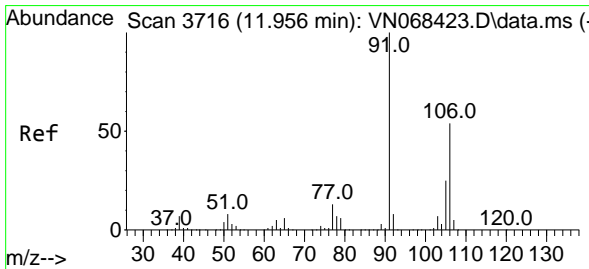
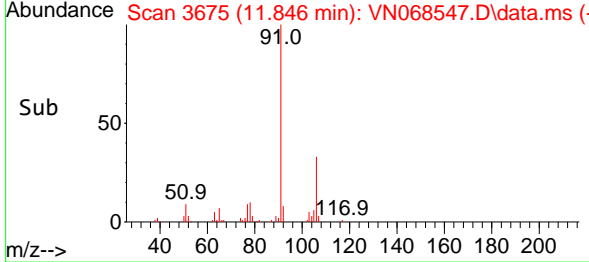
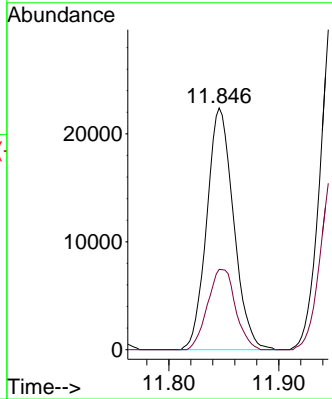
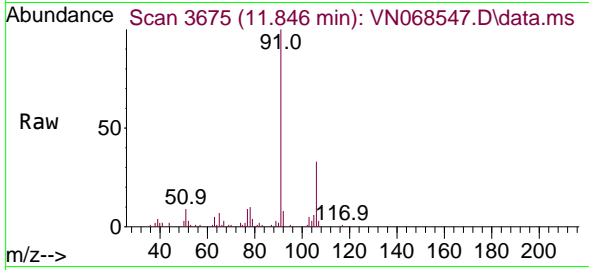




#67
 Ethyl Benzene
 Concen: 1.353 ug/l
 RT: 11.846 min Scan# 3675
 Delta R.T. -0.002 min
 Lab File: VN068547.D
 Acq: 18 Sep 2021 3:57

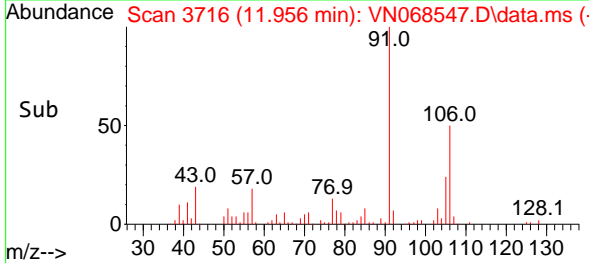
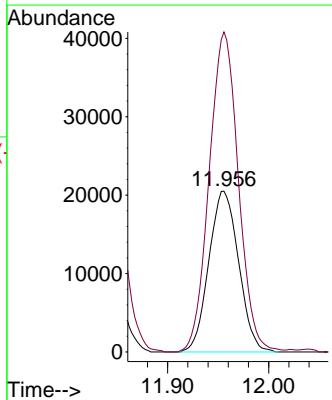
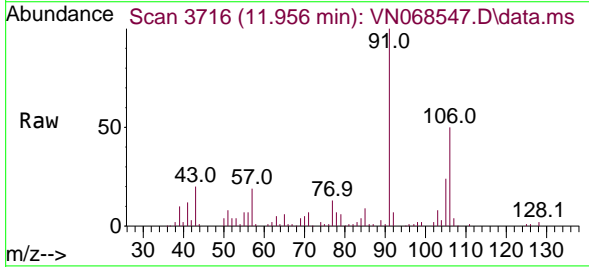
Instrument :
 MSVOA_N
 ClientSampled :
 NAPL-5-SIDEWALL-END-POINT-(10-

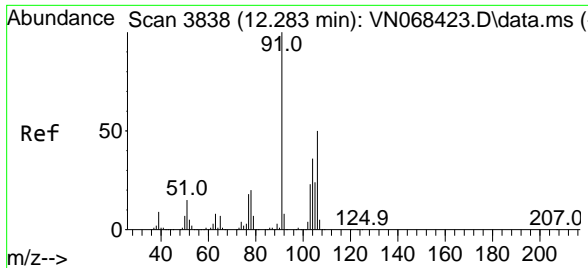
Tgt Ion: 91 Resp: 37905
 Ion Ratio Lower Upper
 91 100
 106 33.2 27.1 40.7



#68
 m/p-Xylenes
 Concen: 3.722 ug/l
 RT: 11.956 min Scan# 3716
 Delta R.T. -0.000 min
 Lab File: VN068547.D
 Acq: 18 Sep 2021 3:57

Tgt Ion: 106 Resp: 41996
 Ion Ratio Lower Upper
 106 100
 91 195.3 149.5 224.3

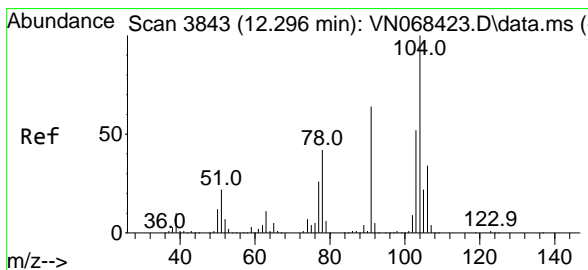
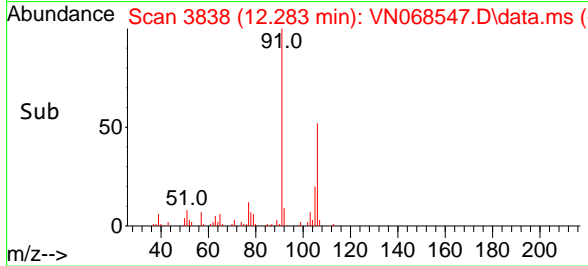
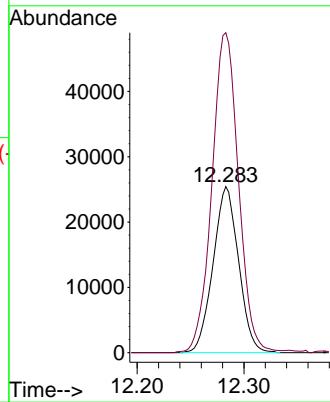
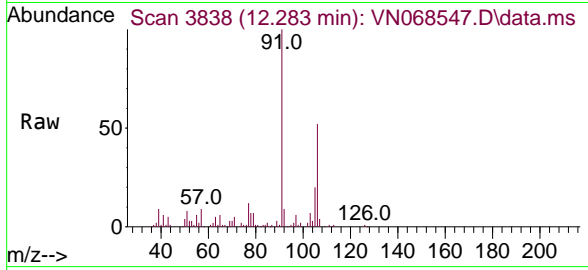




#69
 o-Xylene
 Concen: 3.836 ug/l
 RT: 12.283 min Scan# 3838
 Delta R.T. -0.000 min
 Lab File: VN068547.D
 Acq: 18 Sep 2021 3:57

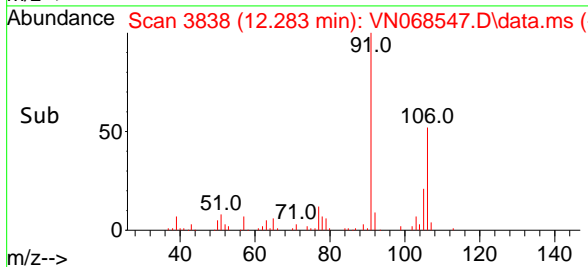
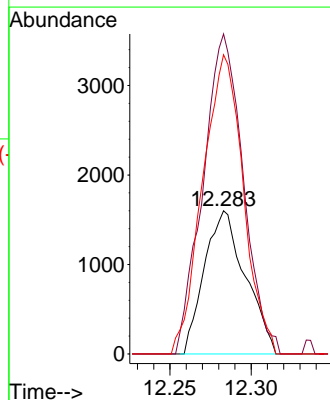
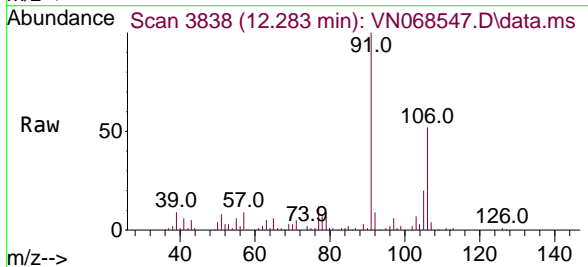
Instrument :
 MSVOA_N
 ClientSampled :
 NAPL-5-SIDEWALL-END-POINT-(10-

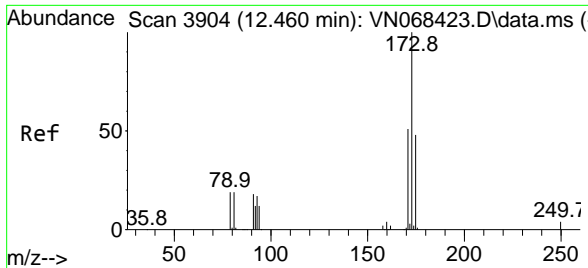
Tgt Ion:106 Resp: 42169
 Ion Ratio Lower Upper
 106 100
 91 200.8 99.3 297.8



#70
 Styrene
 Concen: 1.894 ug/l
 RT: 12.283 min Scan# 3838
 Delta R.T. -0.013 min
 Lab File: VN068547.D
 Acq: 18 Sep 2021 3:57

Tgt Ion:104 Resp: 2810
 Ion Ratio Lower Upper
 104 100
 78 218.5 36.2 54.2#
 103 206.5 44.4 66.6#

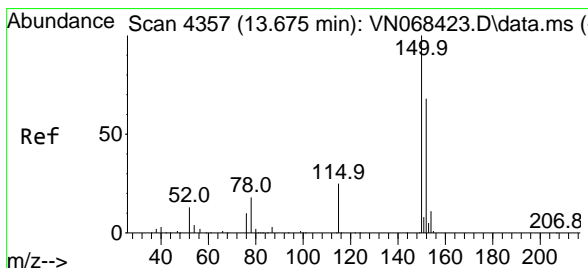
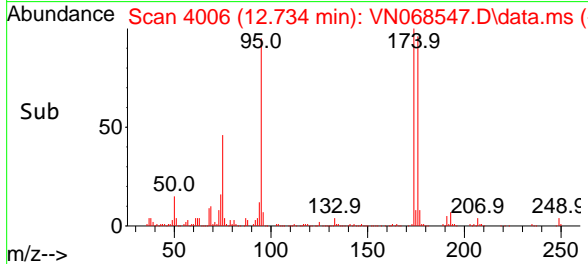
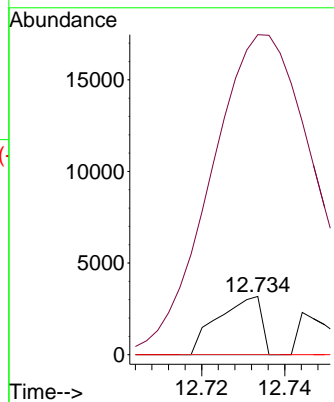
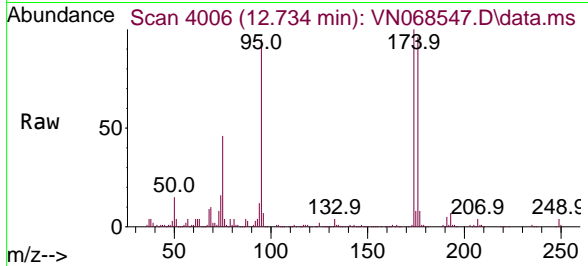




#71
 Bromoform
 Concen: 2.872 ug/l
 RT: 12.734 min Scan# 4006
 Delta R.T. 0.274 min
 Lab File: VN068547.D
 Acq: 18 Sep 2021 3:57

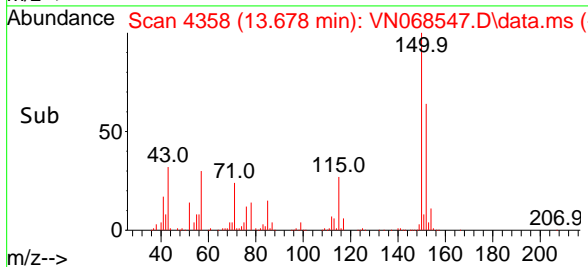
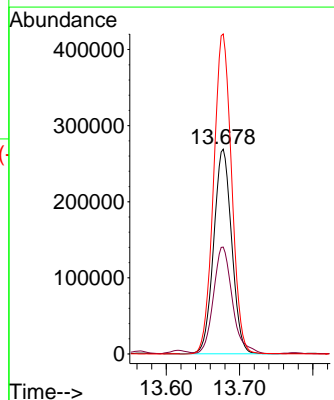
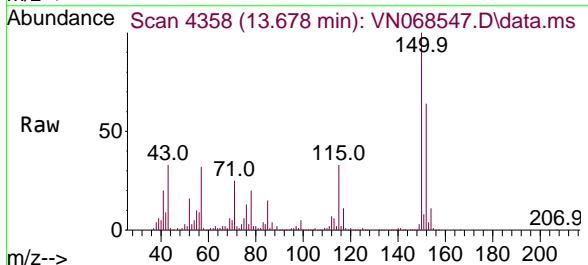
Instrument :
 MSVOA_N
 ClientSampled :
 NAPL-5-SIDEWALL-END-POINT-(10-

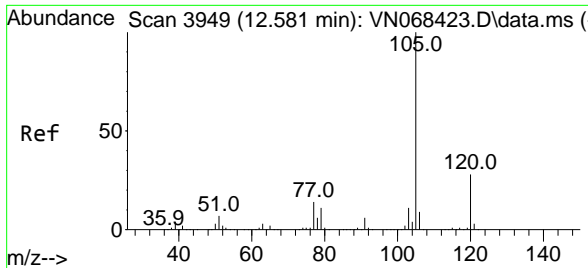
Tgt Ion:173 Resp: 2312
 Ion Ratio Lower Upper
 173 100
 175 1215.1 24.1 72.3#
 254 0.0 0.0 0.0



#72
 1,4-Dichlorobenzene-d4
 Concen: 50.000 ug/l
 RT: 13.678 min Scan# 4358
 Delta R.T. 0.003 min
 Lab File: VN068547.D
 Acq: 18 Sep 2021 3:57

Tgt Ion:152 Resp: 459446
 Ion Ratio Lower Upper
 152 100
 115 54.7 25.6 76.6
 150 156.6 0.0 346.8

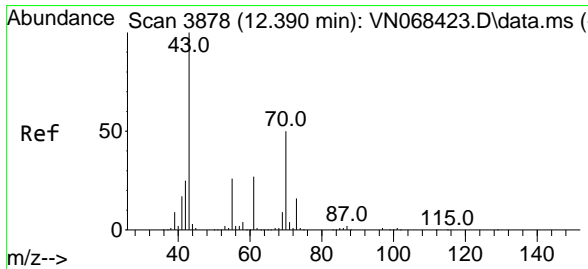
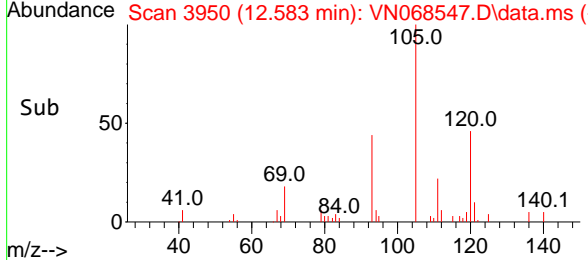
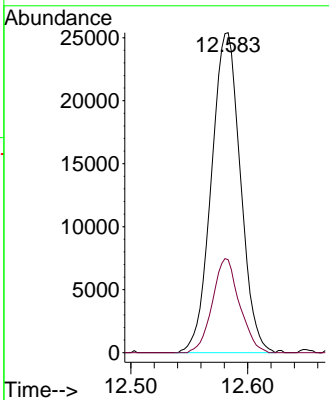
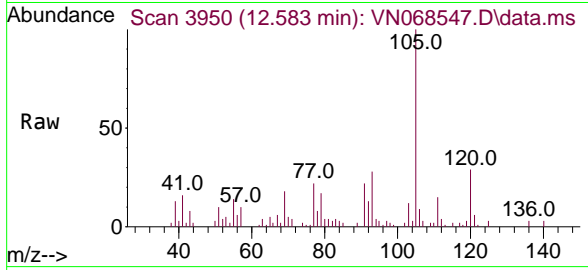




#73
 Isopropylbenzene
 Concen: 1.341 ug/l
 RT: 12.583 min Scan# 3950
 Delta R.T. 0.002 min
 Lab File: VN068547.D
 Acq: 18 Sep 2021 3:57

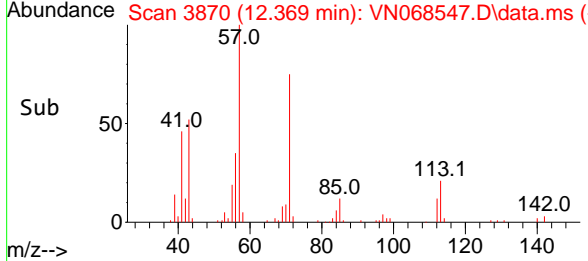
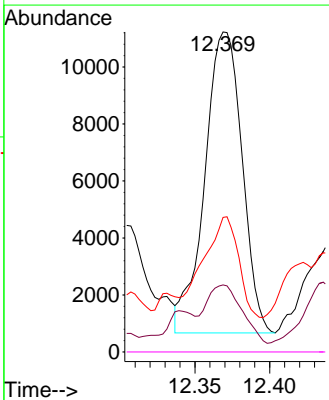
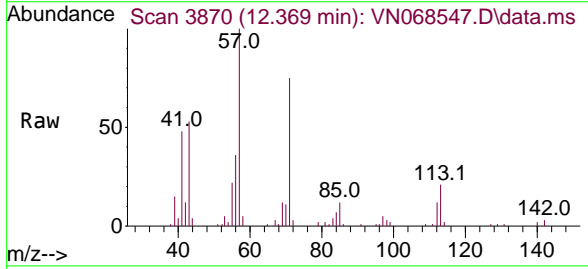
Instrument : MSVOA_N
 ClientSampled : NAPL-5-SIDEWALL-END-POINT-(10-

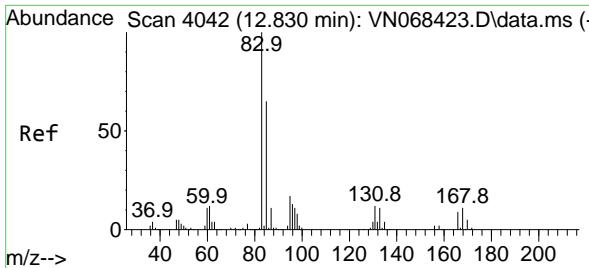
Tgt Ion:105 Resp: 43834
 Ion Ratio Lower Upper
 105 100
 120 27.4 14.1 42.3



#74
 N-ethyl acetate
 Concen: 2.520 ug/l
 RT: 12.369 min Scan# 3870
 Delta R.T. -0.021 min
 Lab File: VN068547.D
 Acq: 18 Sep 2021 3:57

Tgt Ion: 43 Resp: 18373
 Ion Ratio Lower Upper
 43 100
 70 18.1 40.0 60.0#
 55 30.9 21.1 31.7
 61 0.0 21.2 31.8#

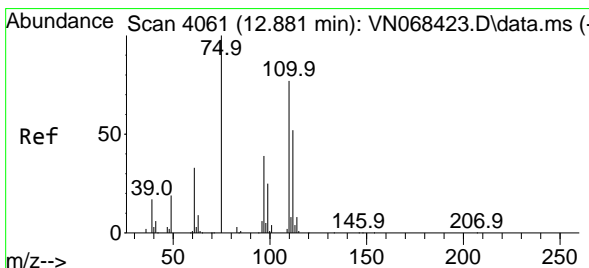
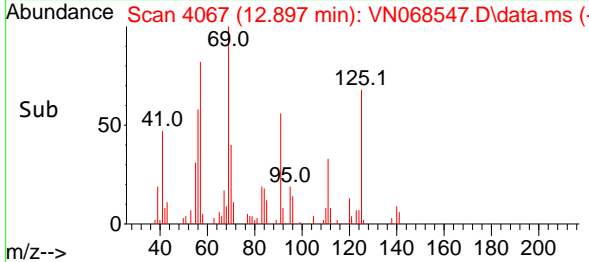
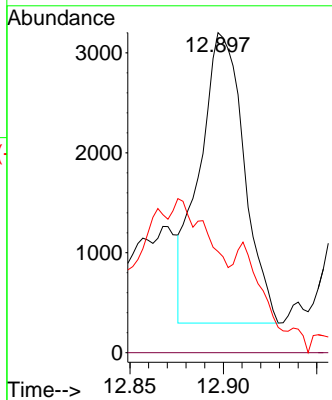
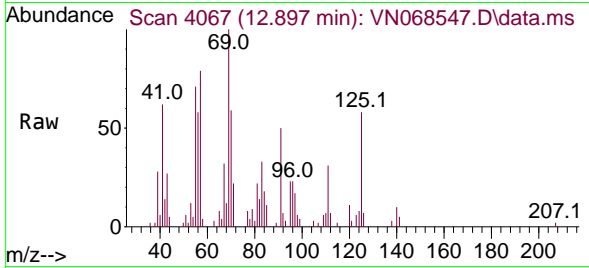




#75
 1,1,2,2-Tetrachloroethane
 Concen: 0.528 ug/l
 RT: 12.897 min Scan# 4067
 Delta R.T. 0.067 min
 Lab File: VN068547.D
 Acq: 18 Sep 2021 3:57

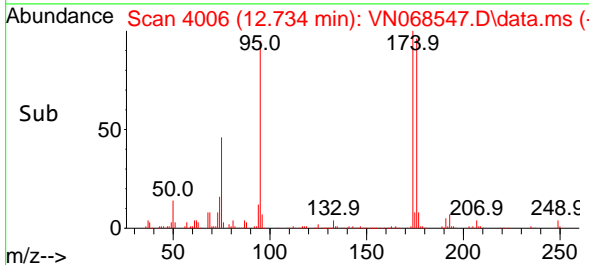
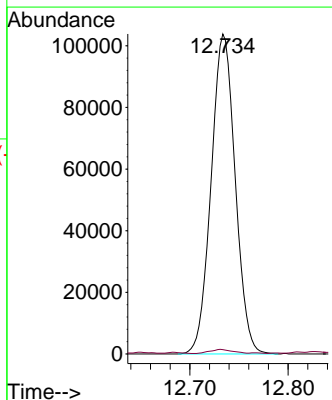
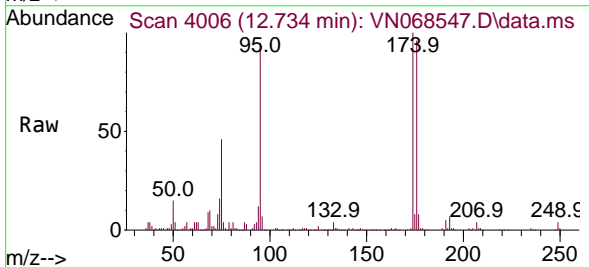
Instrument : MSVOA_N
 ClientSampled : NAPL-5-SIDEWALL-END-POINT-(10-

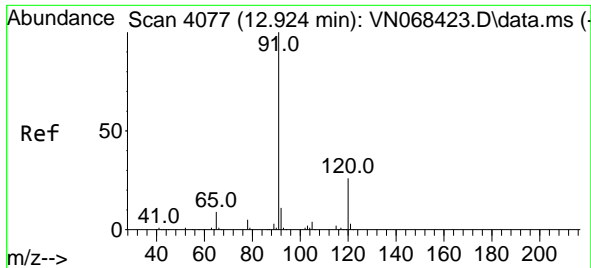
Tgt Ion	Resp	Lower	Upper
83	4835		
131	0.0	6.3	19.1#
85	0.0	32.5	97.4#



#76
 1,2,3-Trichloropropane
 Concen: 27.481 ug/l
 RT: 12.734 min Scan# 4006
 Delta R.T. -0.147 min
 Lab File: VN068547.D
 Acq: 18 Sep 2021 3:57

Tgt Ion	Resp	Lower	Upper
75	176755		
75	100		
77	1.2	100.9	302.7#

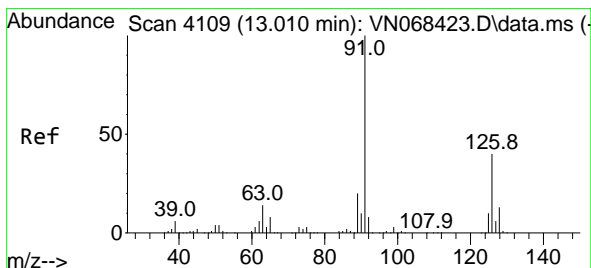
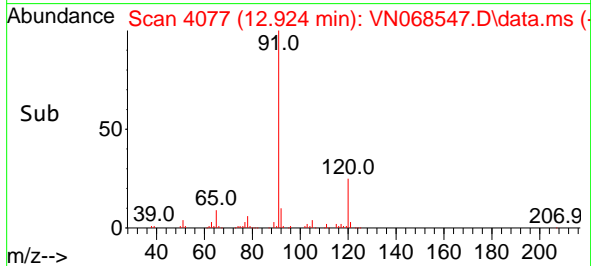
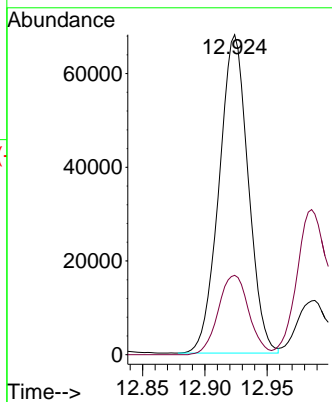
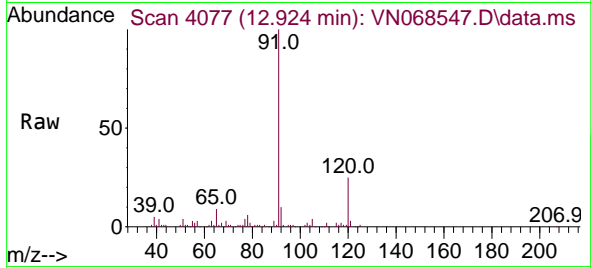




#78
 n-propylbenzene
 Concen: 3.197 ug/l
 RT: 12.924 min Scan# 4077
 Delta R.T. -0.000 min
 Lab File: VN068547.D
 Acq: 18 Sep 2021 3:57

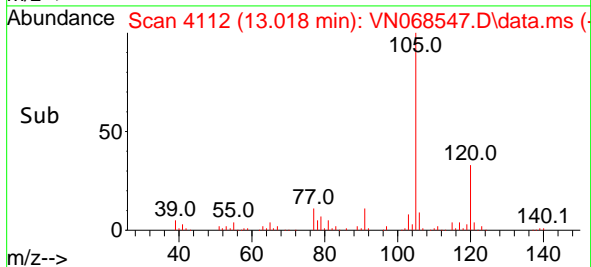
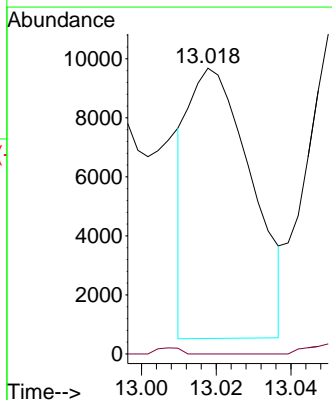
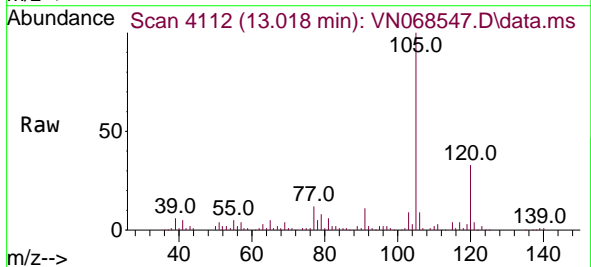
Instrument : MSVOA_N
 Client Sampled : NAPL-5-SIDEWALL-END-POINT-(10-

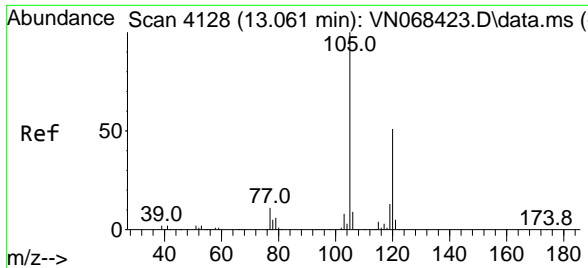
Tgt Ion: 91 Resp: 110343
 Ion Ratio Lower Upper
 91 100
 120 26.2 13.2 39.6



#79
 2-Chlorotoluene
 Concen: 0.506 ug/l
 RT: 13.018 min Scan# 4112
 Delta R.T. 0.008 min
 Lab File: VN068547.D
 Acq: 18 Sep 2021 3:57

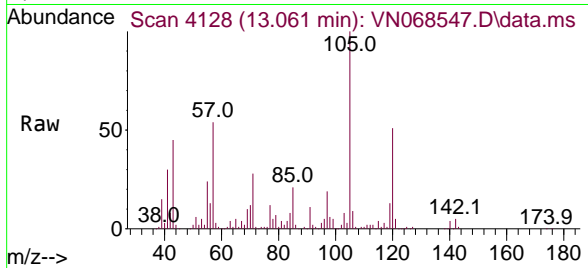
Tgt Ion: 91 Resp: 10763
 Ion Ratio Lower Upper
 91 100
 126 0.0 20.1 60.3#



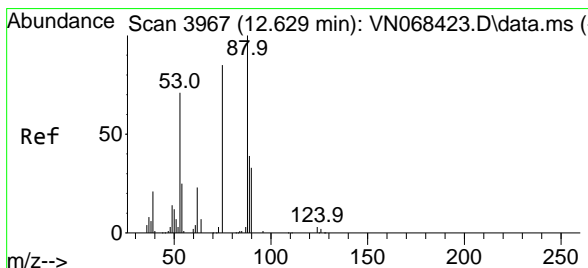
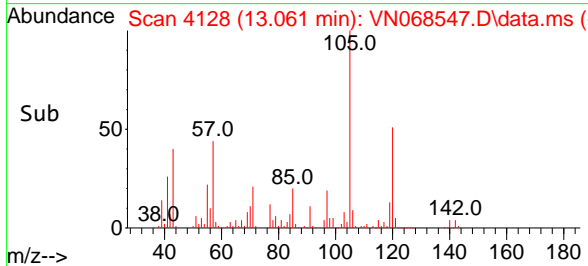
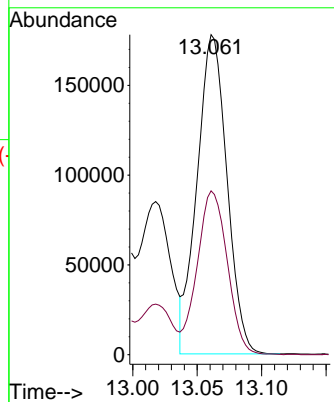


#80
 1,3,5-Trimethylbenzene
 Concen: 10.777 ug/l
 RT: 13.061 min Scan# 4128
 Delta R.T. -0.000 min
 Lab File: VN068547.D
 Acq: 18 Sep 2021 3:57

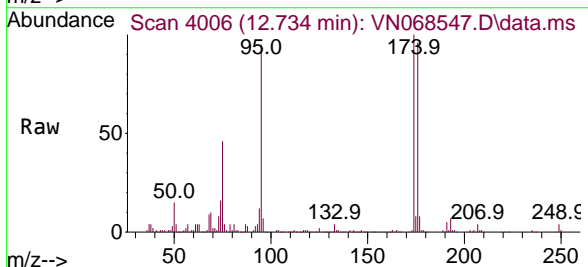
Instrument : MSVOA_N
 ClientSampled : NAPL-5-SIDEWALL-END-POINT-(10-



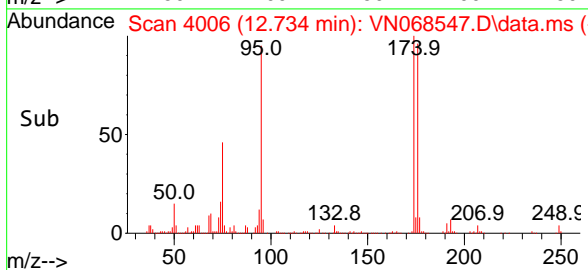
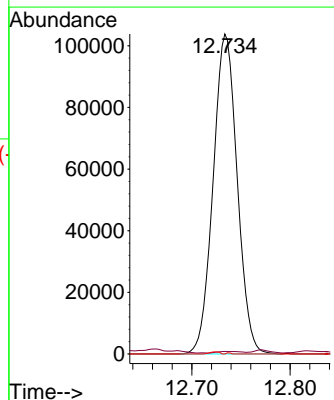
Tgt Ion:105 Resp: 286141
 Ion Ratio Lower Upper
 105 100
 120 51.8 25.7 77.1

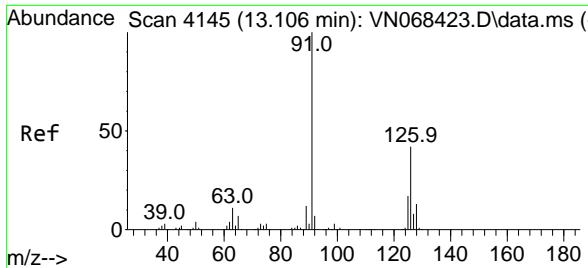


#81
 trans-1,4-Dichloro-2-butene
 Concen: 85.260 ug/l
 RT: 12.734 min Scan# 4006
 Delta R.T. 0.105 min
 Lab File: VN068547.D
 Acq: 18 Sep 2021 3:57



Tgt Ion: 75 Resp: 176755
 Ion Ratio Lower Upper
 75 100
 53 0.4 70.6 105.8#
 89 0.1 39.5 59.3#

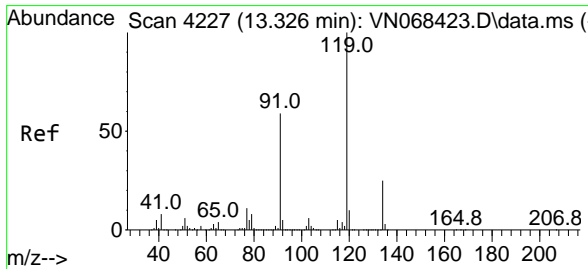
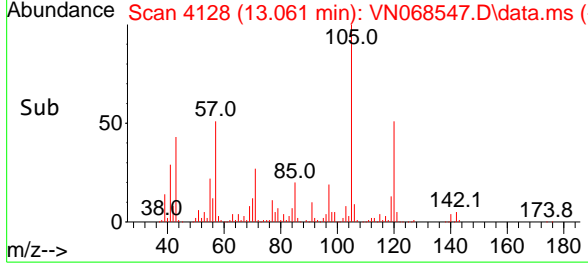
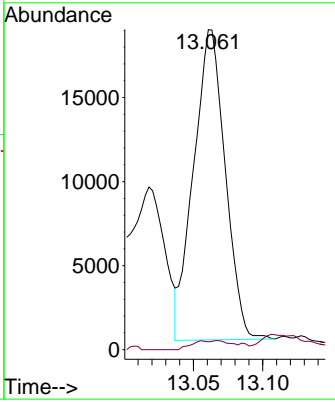
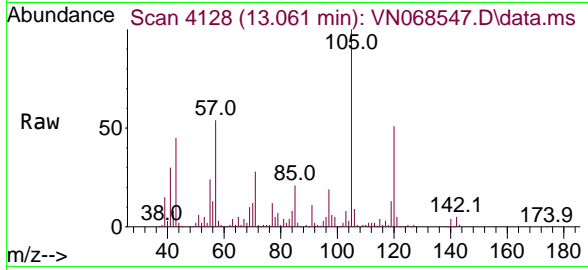




#82
 4-Chlorotoluene
 Concen: 1.429 ug/l
 RT: 13.061 min Scan# 4128
 Delta R.T. -0.045 min
 Lab File: VN068547.D
 Acq: 18 Sep 2021 3:57

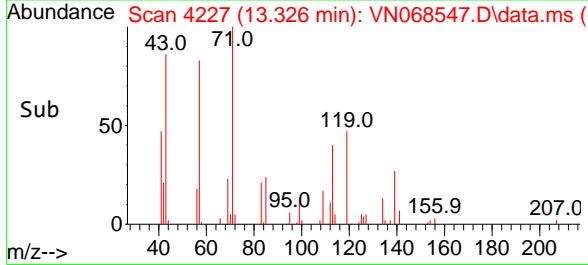
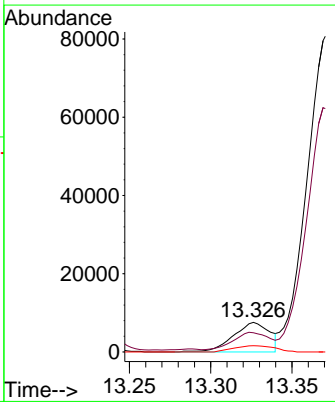
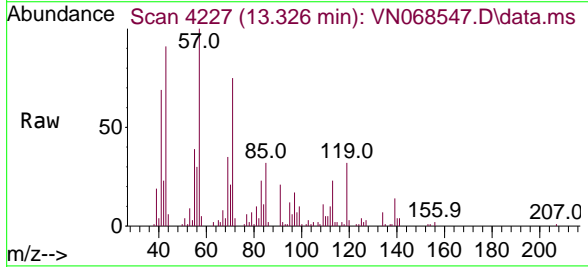
Instrument : MSVOA_N
 ClientSampleId : NAPL-5-SIDEWALL-END-POINT-(10-

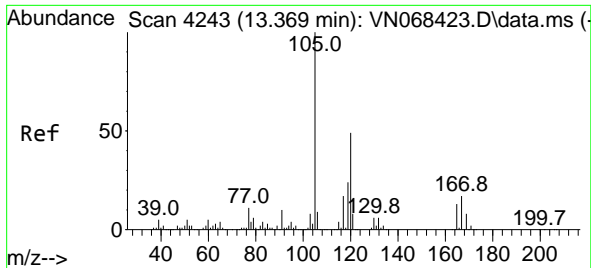
Tgt Ion: 91 Resp: 29309
 Ion Ratio Lower Upper
 91 100
 126 1.6 19.8 59.3#



#83
 tert-Butylbenzene
 Concen: 0.486 ug/l
 RT: 13.326 min Scan# 4227
 Delta R.T. 0.000 min
 Lab File: VN068547.D
 Acq: 18 Sep 2021 3:57

Tgt Ion: 119 Resp: 11784
 Ion Ratio Lower Upper
 119 100
 91 55.9 29.1 87.4
 134 23.8 13.7 41.0

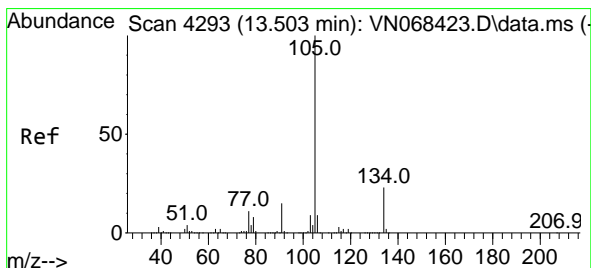
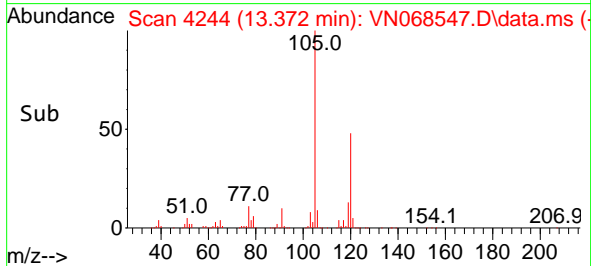
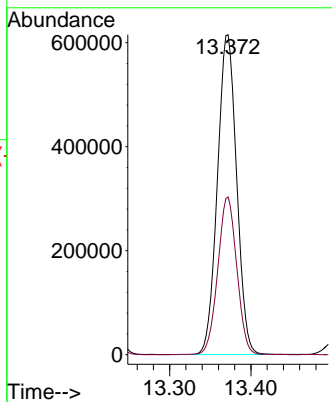
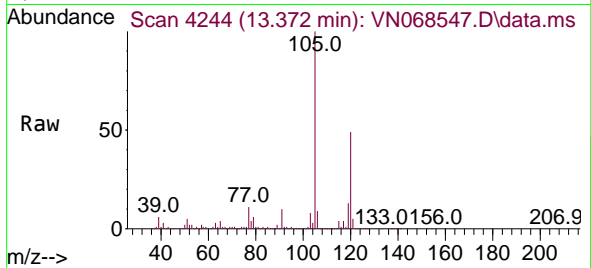




#84
 1,2,4-Trimethylbenzene
 Concen: 39.664 ug/l
 RT: 13.372 min Scan# 4244
 Delta R.T. 0.003 min
 Lab File: VN068547.D
 Acq: 18 Sep 2021 3:57

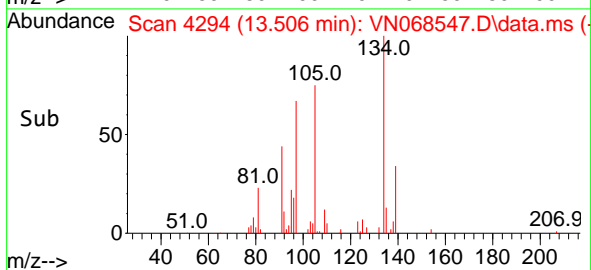
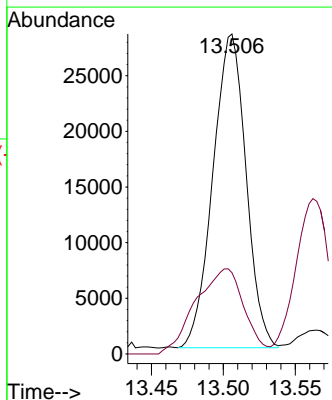
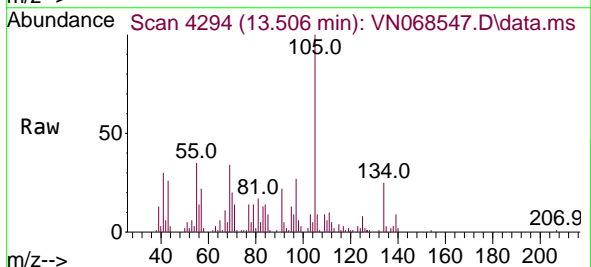
Instrument : MSVOA_N
 ClientSampled : NAPL-5-SIDEWALL-END-POINT-(10-

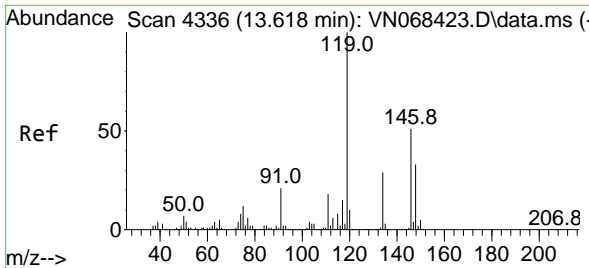
Tgt Ion:105 Resp: 1010005
 Ion Ratio Lower Upper
 105 100
 120 48.9 24.3 72.9



#85
 sec-Butylbenzene
 Concen: 1.413 ug/l
 RT: 13.506 min Scan# 4294
 Delta R.T. 0.003 min
 Lab File: VN068547.D
 Acq: 18 Sep 2021 3:57

Tgt Ion:105 Resp: 45174
 Ion Ratio Lower Upper
 105 100
 134 39.5 11.4 34.1#

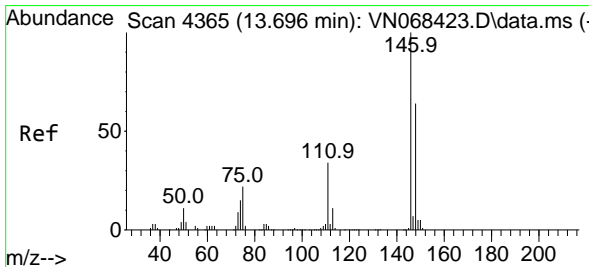
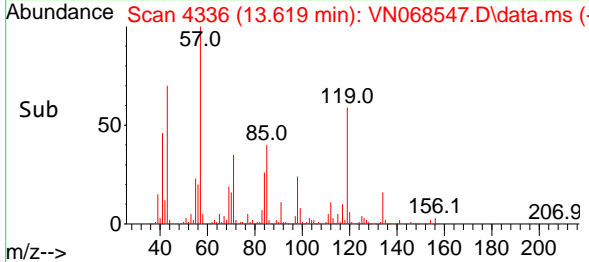
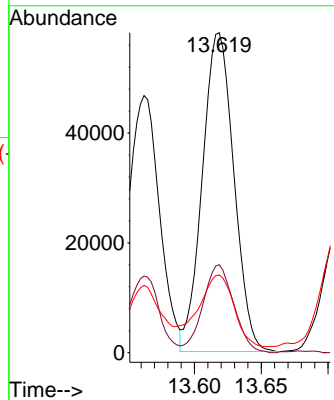
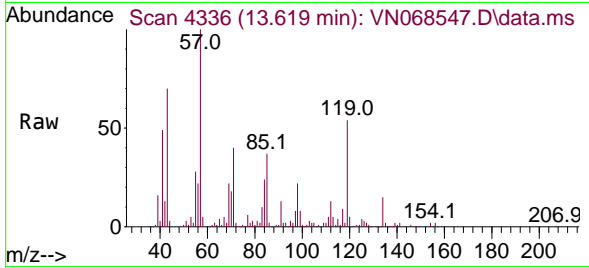




#86
 p-Isopropyltoluene
 Concen: 3.530 ug/l
 RT: 13.619 min Scan# 4336
 Delta R.T. 0.001 min
 Lab File: VN068547.D
 Acq: 18 Sep 2021 3:57

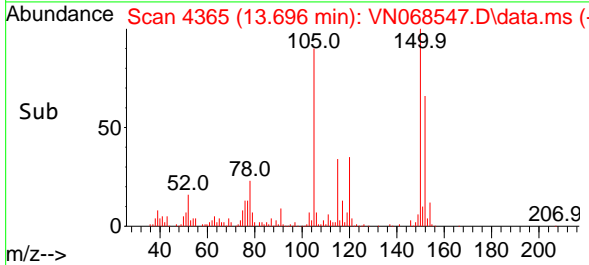
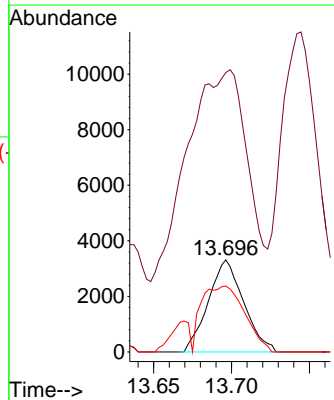
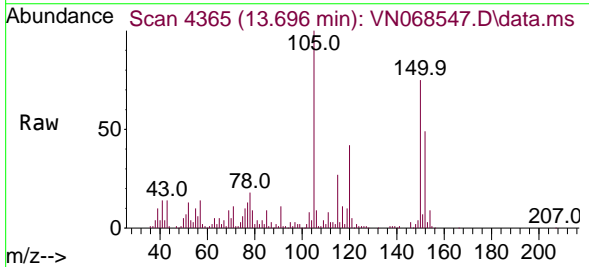
Instrument :
 MSVOA_N
 ClientSampled :
 NAPL-5-SIDEWALL-END-POINT-(10-

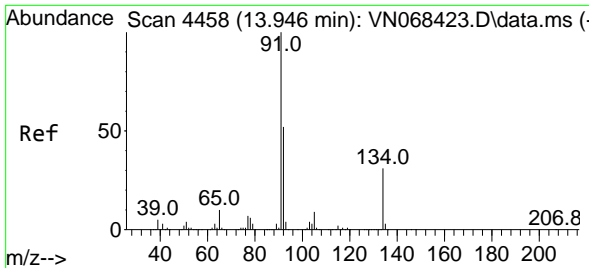
Tgt Ion:119 Resp: 95248
 Ion Ratio Lower Upper
 119 100
 134 27.1 14.1 42.4
 91 24.2 10.6 31.8



#88
 1,4-Dichlorobenzene
 Concen: 0.338 ug/l
 RT: 13.696 min Scan# 4365
 Delta R.T. 0.000 min
 Lab File: VN068547.D
 Acq: 18 Sep 2021 3:57

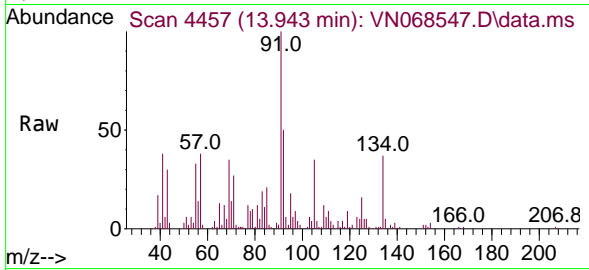
Tgt Ion:146 Resp: 5224
 Ion Ratio Lower Upper
 146 100
 111 187.3 17.2 51.6#
 148 87.6 31.9 95.7



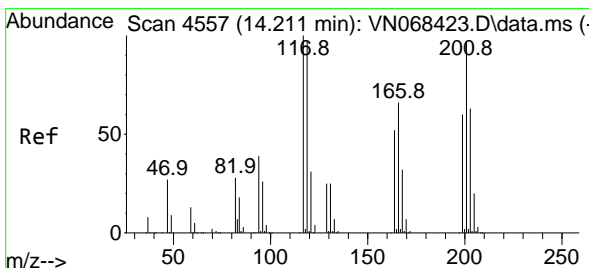
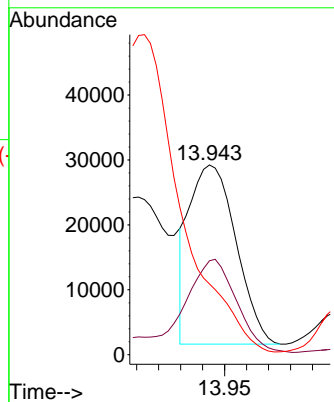
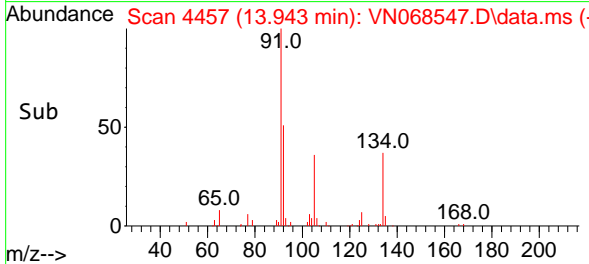


#89
 n-Butylbenzene
 Concen: 2.069 ug/l
 RT: 13.943 min Scan# 4457
 Delta R.T. -0.003 min
 Lab File: VN068547.D
 Acq: 18 Sep 2021 3:57

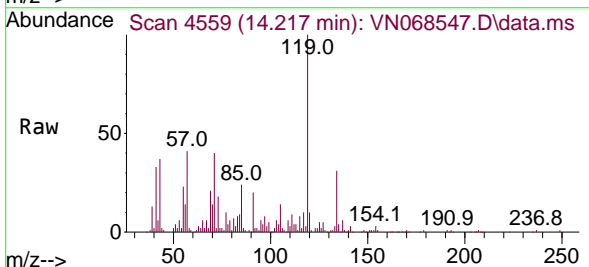
Instrument :
 MSVOA_N
 ClientSampled :
 NAPL-5-SIDEWALL-END-POINT-(10-



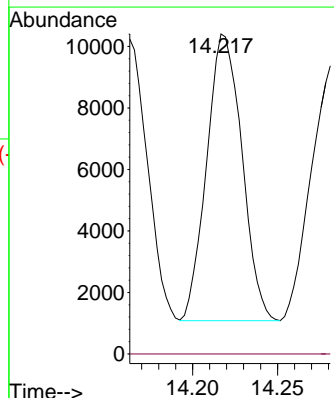
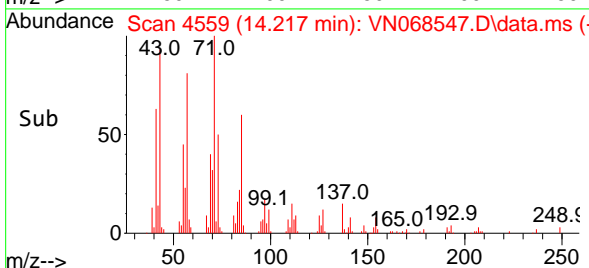
Tgt Ion: 91 Resp: 40660
 Ion Ratio Lower Upper
 91 100
 92 62.7 26.0 78.0
 134 0.0 15.4 46.2#

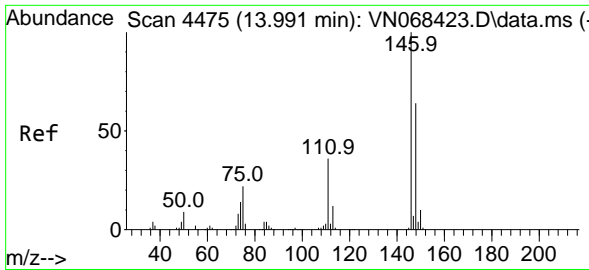


#90
 Hexachloroethane
 Concen: 2.840 ug/l
 RT: 14.217 min Scan# 4559
 Delta R.T. 0.006 min
 Lab File: VN068547.D
 Acq: 18 Sep 2021 3:57



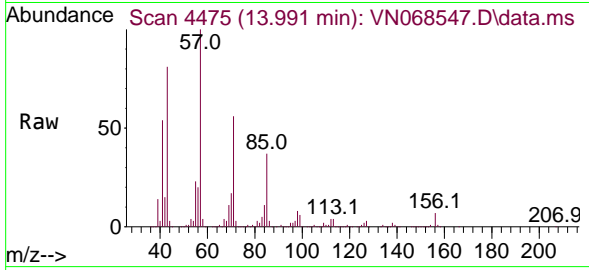
Tgt Ion: 117 Resp: 13450
 Ion Ratio Lower Upper
 117 100
 201 0.0 49.3 147.9#



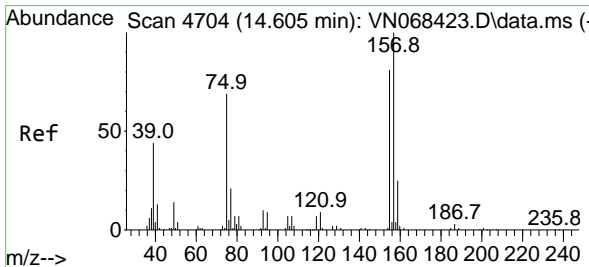
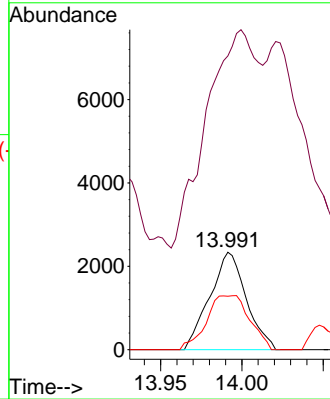
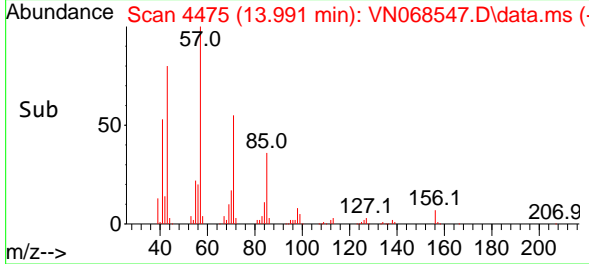


#91
 1,2-Dichlorobenzene
 Concen: 0.241 ug/l
 RT: 13.991 min Scan# 4475
 Delta R.T. 0.00 min
 Lab File: VN068547.D
 Acq: 18 Sep 2021 3:57

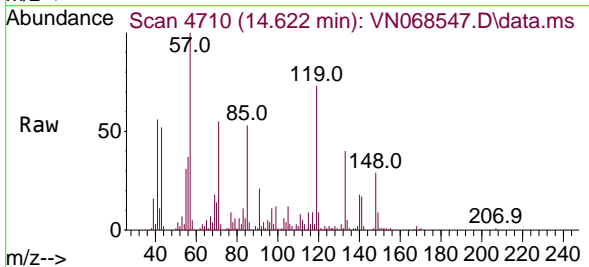
Instrument : MSVOA_N
 Client Sampled : NAPL-5-SIDEWALL-END-POINT-(10-



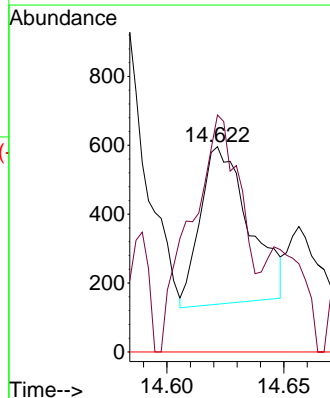
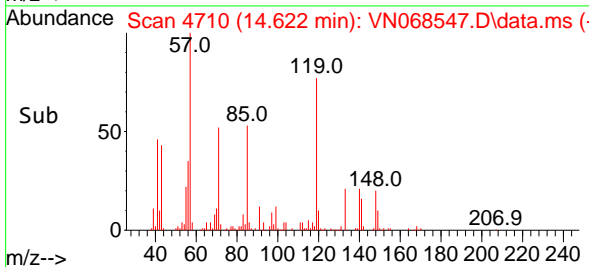
Tgt Ion: 146 Resp: 3644
 Ion Ratio Lower Upper
 146 100
 111 321.5 18.1 54.3#
 148 65.4 32.1 96.5

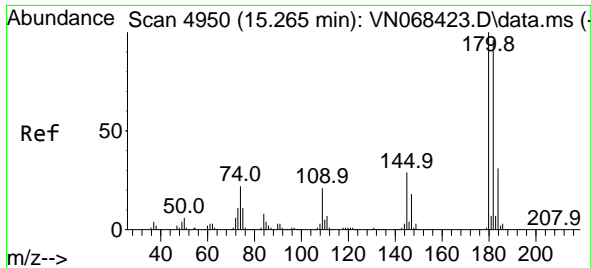


#92
 1,2-Dibromo-3-Chloropropane
 Concen: 0.457 ug/l
 RT: 14.622 min Scan# 4710
 Delta R.T. 0.017 min
 Lab File: VN068547.D
 Acq: 18 Sep 2021 3:57



Tgt Ion: 75 Resp: 665
 Ion Ratio Lower Upper
 75 100
 155 161.5 56.9 170.7
 157 0.0 73.0 219.2#

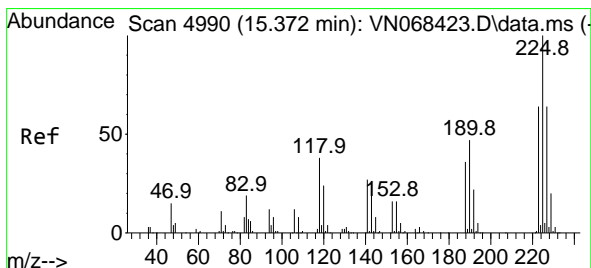
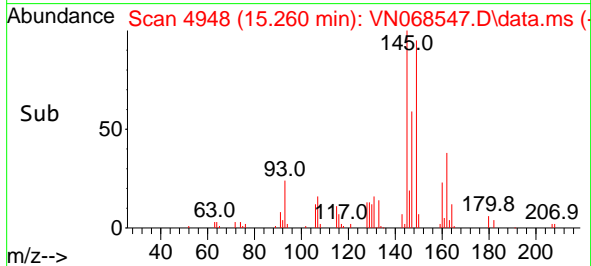
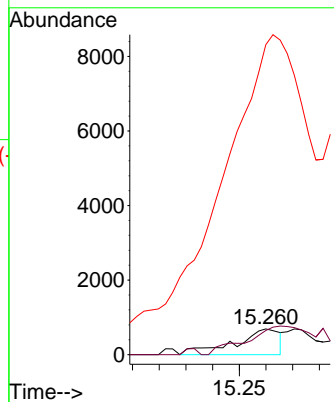
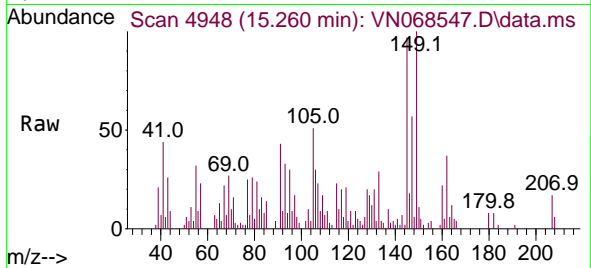




#93
 1,2,4-Trichlorobenzene
 Concen: 3.048 ug/l
 RT: 15.260 min Scan# 4948
 Delta R.T. -0.005 min
 Lab File: VN068547.D
 Acq: 18 Sep 2021 3:57

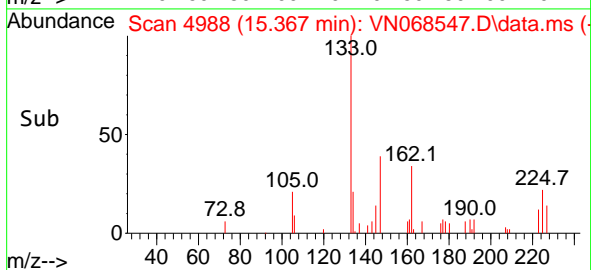
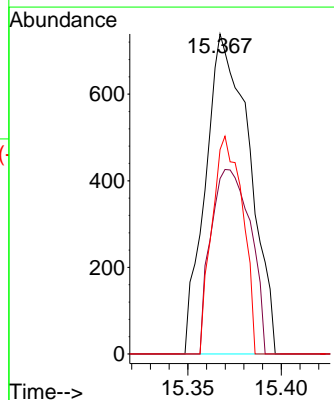
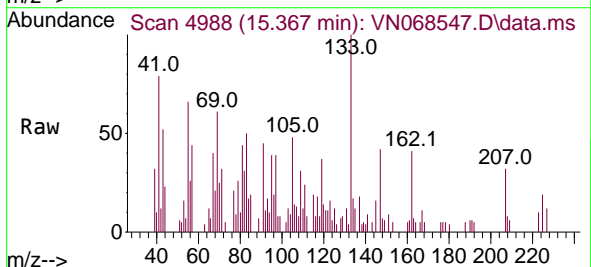
Instrument : MSVOA_N
 ClientSampled : NAPL-5-SIDEWALL-END-POINT-(10-

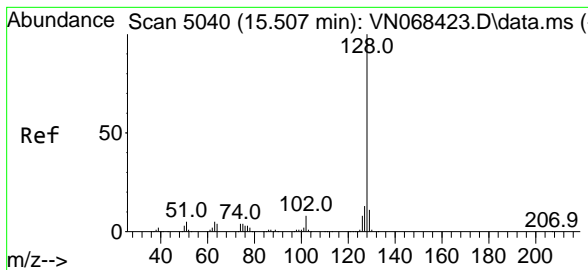
Tgt Ion:180 Resp: 811
 Ion Ratio Lower Upper
 180 100
 182 198.6 47.5 142.6#
 145 2367.9 14.1 42.4#



#94
 Hexachlorobutadiene
 Concen: 0.270 ug/l
 RT: 15.367 min Scan# 4988
 Delta R.T. -0.005 min
 Lab File: VN068547.D
 Acq: 18 Sep 2021 3:57

Tgt Ion:225 Resp: 1207
 Ion Ratio Lower Upper
 225 100
 223 51.9 32.0 96.2
 227 47.2 31.9 95.5

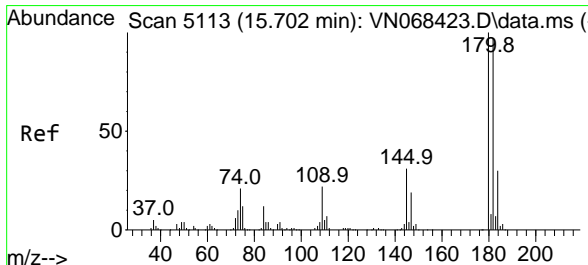
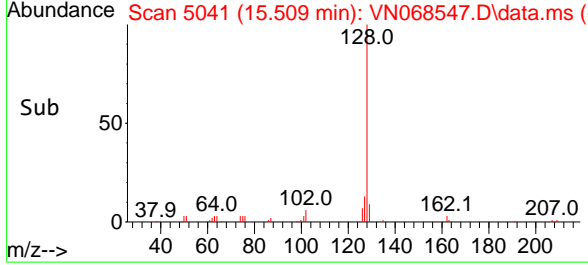
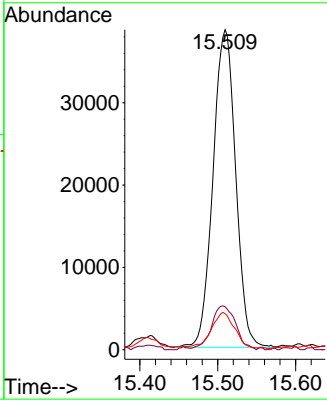
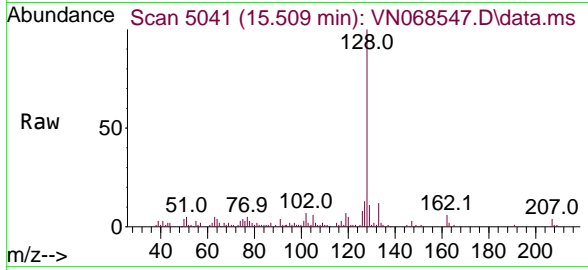




#95
 Naphthalene
 Concen: 7.477 ug/l
 RT: 15.509 min Scan# 5041
 Delta R.T. 0.002 min
 Lab File: VN068547.D
 Acq: 18 Sep 2021 3:57

Instrument : MSVOA_N
 ClientSampled : NAPL-5-SIDEWALL-END-POINT-(10-

Tgt Ion	Resp	Lower	Upper
128	100		
127	14.8	10.6	15.8
129	11.4	8.6	13.0



#96
 1,2,3-Trichlorobenzene
 Concen: 3.096 ug/l
 RT: 15.700 min Scan# 5112
 Delta R.T. -0.002 min
 Lab File: VN068547.D
 Acq: 18 Sep 2021 3:57

Tgt Ion	Resp	Lower	Upper
180	100		
182	103.2	47.9	143.6
145	0.0	15.2	45.5#

