

Data Path : Z:\voasrv\HPCHEM1\MSVOA_N\Data\VN091721\
 Data File : VN068554.D
 Acq On : 18 Sep 2021 6:53
 Operator : JC/MD
 Sample : M3798-07
 Misc : 6.85g/5mL/100uL/5.00mL/MSVOA_N/MEOH
 ALS Vial : 48 Sample Multiplier: 1

Instrument :
 MSVOA_N
 ClientSampleId :
 DUPLICATE-2

Quant Time: Sep 20 06:03:25 2021
 Quant Method : Z:\voasrv\HPCHEM1\MSVOA_N\methods\82N090721W.M
 Quant Title : SW846 8260
 QLast Update : Fri Sep 17 11:02:11 2021
 Response via : Initial Calibration

Compound	R.T.	QIon	Response	Conc	Units	Dev(Min)
Internal Standards						
1) Pentafluorobenzene	8.083	168	651950	50.000	ug/l	0.00
34) 1,4-Difluorobenzene	8.968	114	855783	50.000	ug/l	0.00
63) Chlorobenzene-d5	11.749	117	892611	50.000	ug/l	0.00
72) 1,4-Dichlorobenzene-d4	13.678	152	577806	50.000	ug/l	0.00
System Monitoring Compounds						
33) 1,2-Dichloroethane-d4	8.434	65	278503	46.570	ug/l	0.00
Spiked Amount	50.000	Range 61 - 141	Recovery	=	93.140%	
35) Dibromofluoromethane	8.019	113	249765	48.390	ug/l	0.00
Spiked Amount	50.000	Range 69 - 133	Recovery	=	96.780%	
50) Toluene-d8	10.443	98	1011810	47.954	ug/l	0.00
Spiked Amount	50.000	Range 65 - 126	Recovery	=	95.900%	
62) 4-Bromofluorobenzene	12.734	95	550613	76.505	ug/l	0.00
Spiked Amount	50.000	Range 58 - 135	Recovery	=	153.020%#	
Target Compounds						
3) Chloromethane	2.290	50	226	Below Cal	#	53
4) Vinyl Chloride	2.448	62	2091	0.259	ug/l	93
5) Bromomethane	2.851	94	53	Below Cal	#	34
11) Tert butyl alcohol	5.342	59	121	Below Cal	#	84
16) Acetone	4.312	43	3339	Below Cal	#	80
18) Methyl Acetate	4.846	43	3414	Below Cal		94
20) Methylene Chloride	5.077	84	6472	Below Cal	#	86
25) 2-Butanone	7.348	43	1729	0.595	ug/l #	79
27) cis-1,2-Dichloroethene	7.321	96	7348	1.070	ug/l	80
31) Cyclohexane	8.083	56	9312	1.028	ug/l #	34
36) 1,1-Dichloropropene	8.080	75	35336	4.953	ug/l #	47
37) Ethyl Acetate	7.348	43	1729	0.319	ug/l #	66
38) Carbon Tetrachloride	8.083	117	53343	6.241	ug/l #	16
39) Methylcyclohexane	9.459	83	3113	0.345	ug/l	91
55) 1,1,2-Trichloroethane	10.880	97	7369	1.325	ug/l #	28
56) Ethyl methacrylate	10.738	69	1756	0.254	ug/l	86
59) 2-Hexanone	11.055	43	33914	9.265	ug/l #	25
60) Dibromochloromethane	11.063	129	160	1.823	ug/l #	11
64) Tetrachloroethene	10.977	164	4893	0.618	ug/l	89
65) Chlorobenzene	11.883	112	7342	0.400	ug/l #	42
70) Styrene	12.299	104	1267	1.813	ug/l #	77
71) Bromoform	12.720	173	599	2.610	ug/l #	1
73) Isopropylbenzene	12.583	105	49857	1.213	ug/l	100
74) N-amyl acetate	12.372	43	1011210	110.306	ug/l #	62
75) 1,1,2,2-Tetrachloroethane	12.811	83	62826	5.452	ug/l #	1
76) 1,2,3-Trichloropropane	12.734	75	216978	26.798	ug/l #	1
78) n-propylbenzene	12.903	91	42882	0.988	ug/l #	49
79) 2-Chlorotoluene	13.007	91	37024	1.384	ug/l #	35
81) trans-1,4-Dichloro-2-b...	12.734	75	216978	83.223	ug/l #	25
82) 4-Chlorotoluene	13.058	91	34882	1.352	ug/l #	30
83) tert-Butylbenzene	13.326	119	152369	4.998	ug/l	90
84) 1,2,4-Trimethylbenzene	13.506	105	512207	15.995	ug/l #	29
85) sec-Butylbenzene	13.506	105	512207	12.742	ug/l #	61
86) p-Isopropyltoluene	13.774	119	233015	6.868	ug/l	93
89) n-Butylbenzene	13.943	91	101655	4.113	ug/l #	63
90) Hexachloroethane	14.217	117	9643	1.619	ug/l #	1

Data Path : Z:\voasrv\HPCHEM1\MSVOA_N\Data\VN091721\
 Data File : VN068554.D
 Acq On : 18 Sep 2021 6:53
 Operator : JC/MD
 Sample : M3798-07
 Misc : 6.85g/5mL/100uL/5.00mL/MSVOA_N/MEOH
 ALS Vial : 48 Sample Multiplier: 1

Instrument :
 MSVOA_N
 ClientSampleId :
 DUPLICATE-2

Quant Time: Sep 20 06:03:25 2021
 Quant Method : Z:\voasrv\HPCHEM1\MSVOA_N\methods\82N090721W.M
 Quant Title : SW846 8260
 QLast Update : Fri Sep 17 11:02:11 2021
 Response via : Initial Calibration

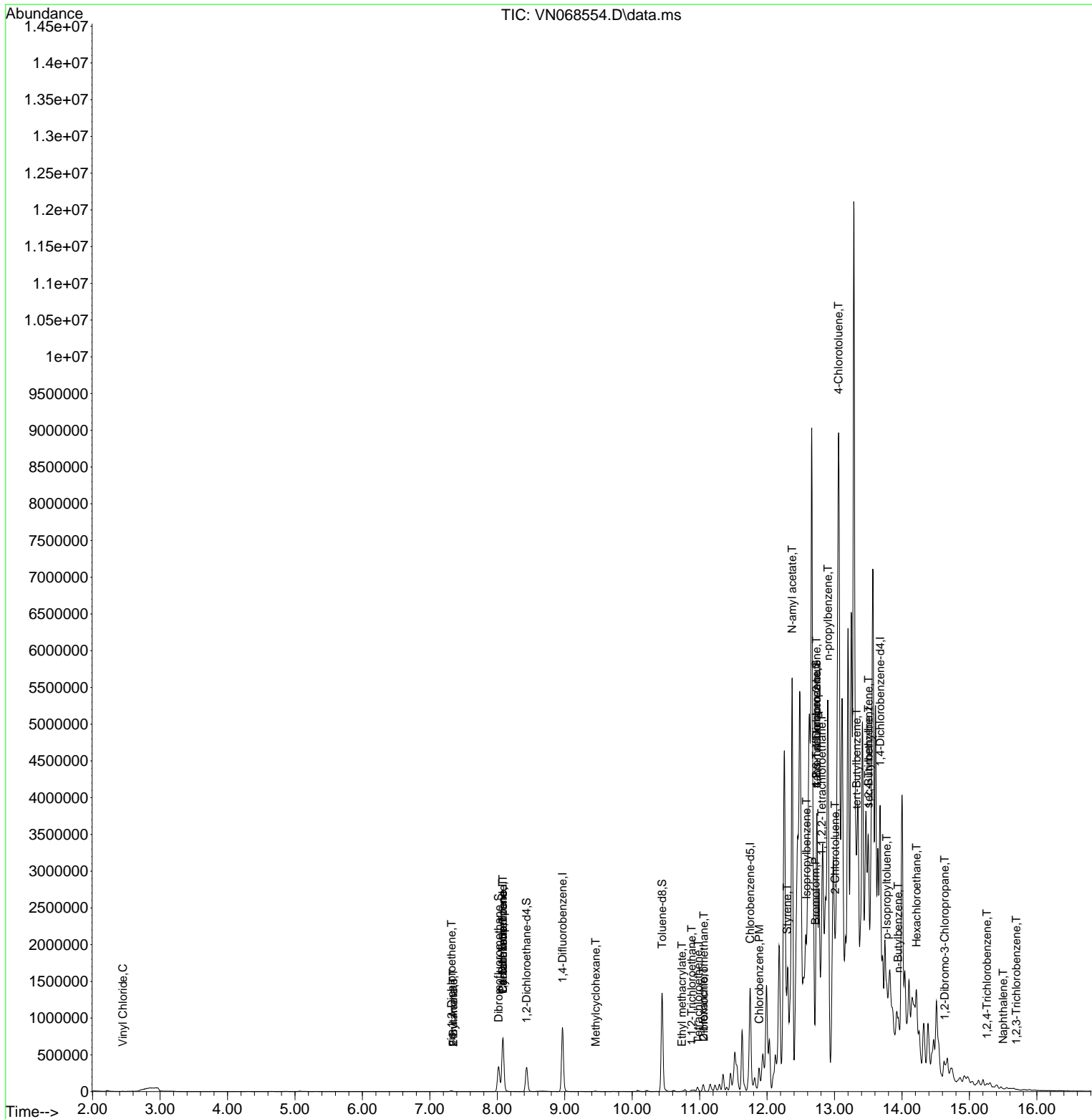
Compound	R.T.	QIon	Response	Conc	Units	Dev(Min)
92) 1,2-Dibromo-3-Chloropr...	14.635	75	479	0.262	ug/l #	1
93) 1,2,4-Trichlorobenzene	15.260	180	535	3.006	ug/l #	1
95) Naphthalene	15.501	128	768	3.528	ug/l #	64
96) 1,2,3-Trichlorobenzene	15.697	180	187	2.991	ug/l #	4

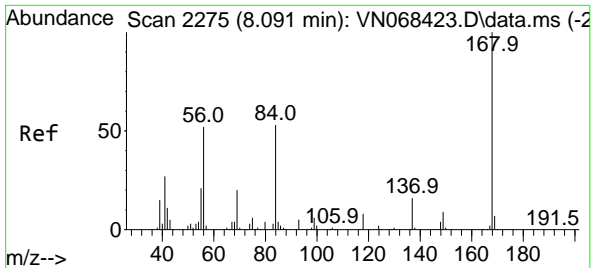
(#) = qualifier out of range (m) = manual integration (+) = signals summed

Data Path : Z:\voasrv\HPCHEM1\MSVOA_N\Data\VN091721\
 Data File : VN068554.D
 Acq On : 18 Sep 2021 6:53
 Operator : JC/MD
 Sample : M3798-07
 Misc : 6.85g/5mL/100uL/5.00mL/MSVOA_N/MEOH
 ALS Vial : 48 Sample Multiplier: 1

Instrument :
 MSVOA_N
 Client Sampled :
 DUPLICATE-2

Quant Time: Sep 20 06:03:25 2021
 Quant Method : Z:\voasrv\HPCHEM1\MSVOA_N\methods\82N090721W.M
 Quant Title : SW846 8260
 QLast Update : Fri Sep 17 11:02:11 2021
 Response via : Initial Calibration

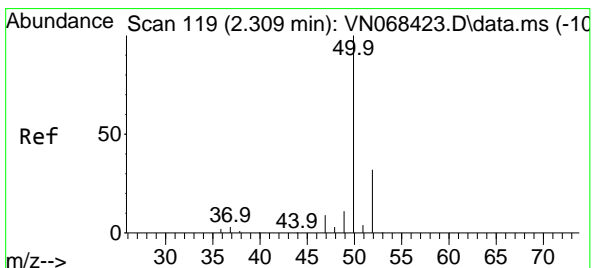
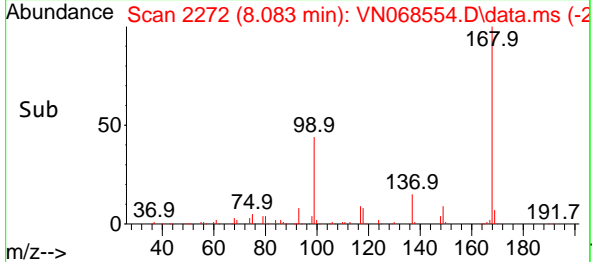
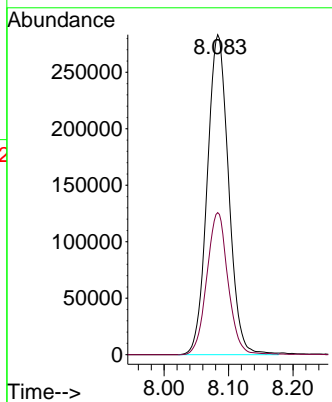
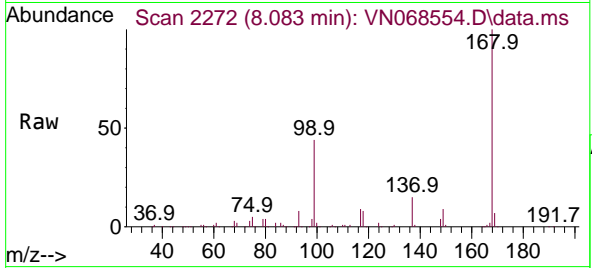




#1
 Pentafluorobenzene
 Concen: 50.000 ug/l
 RT: 8.083 min Scan# 2272
 Delta R.T. -0.008 min
 Lab File: VN068554.D
 Acq: 18 Sep 2021 6:53

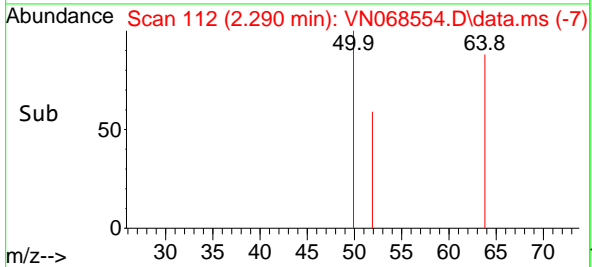
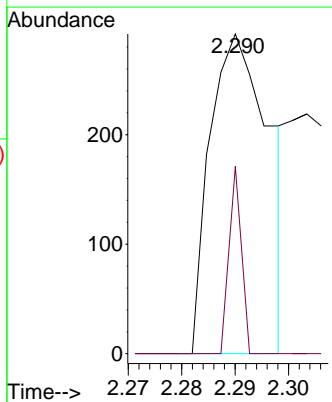
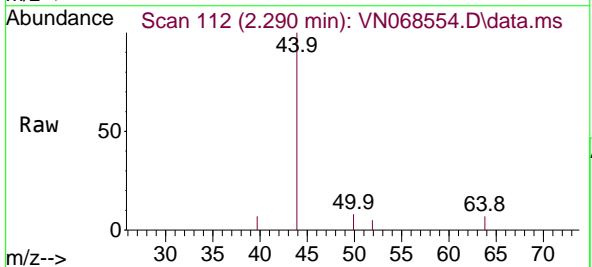
Instrument :
 MSVOA_N
ClientSampled :
 DUPLICATE-2

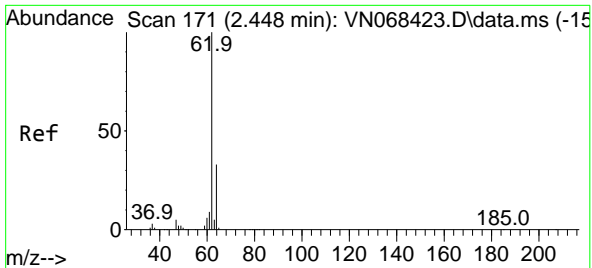
Tgt Ion:168 Resp: 651950
 Ion Ratio Lower Upper
 168 100
 99 44.4 38.2 57.4



#3
 Chloromethane
 Concen: Below Cal
 RT: 2.290 min Scan# 112
 Delta R.T. -0.019 min
 Lab File: VN068554.D
 Acq: 18 Sep 2021 6:53

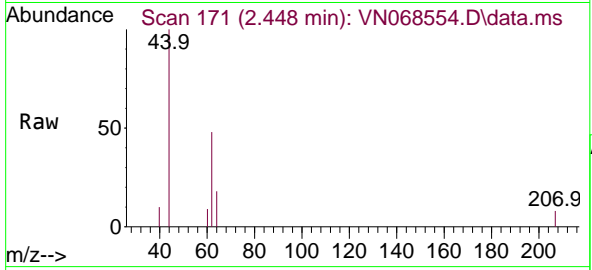
Tgt Ion: 50 Resp: 226
 Ion Ratio Lower Upper
 50 100
 52 58.6 25.8 38.6#



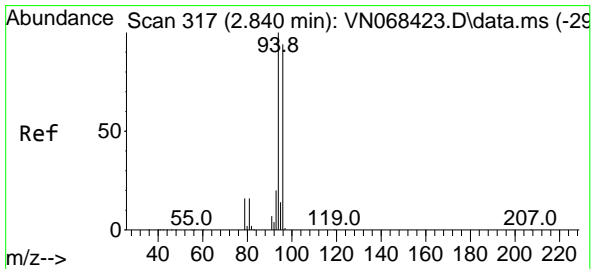
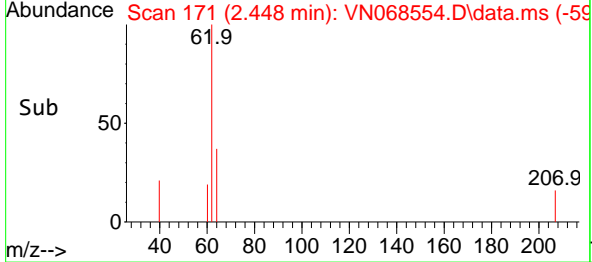
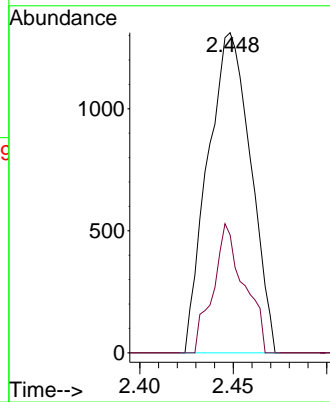


#4
 Vinyl Chloride
 Concen: 0.259 ug/l
 RT: 2.448 min Scan# 171
 Delta R.T. 0.000 min
 Lab File: VN068554.D
 Acq: 18 Sep 2021 6:53

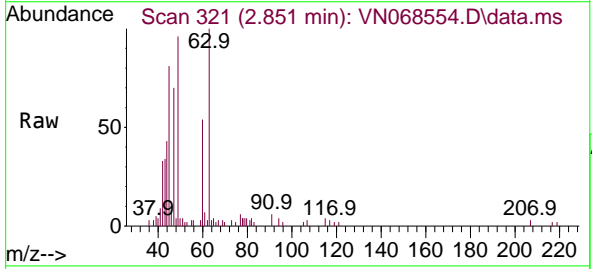
Instrument :
 MSVOA_N
 ClientSampled :
 DUPLICATE-2



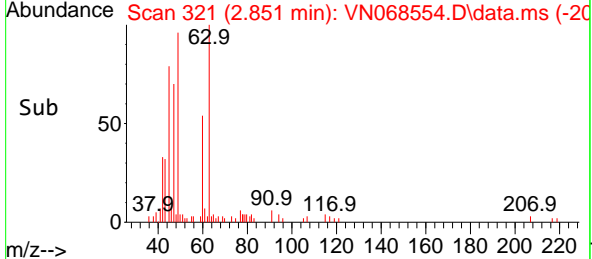
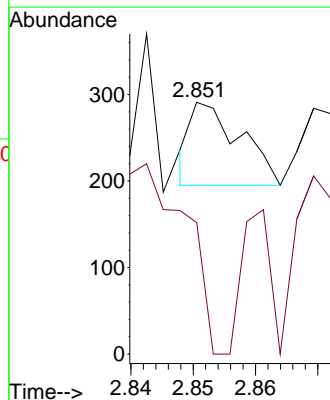
Tgt Ion: 62 Resp: 2091
 Ion Ratio Lower Upper
 62 100
 64 36.8 26.3 39.5

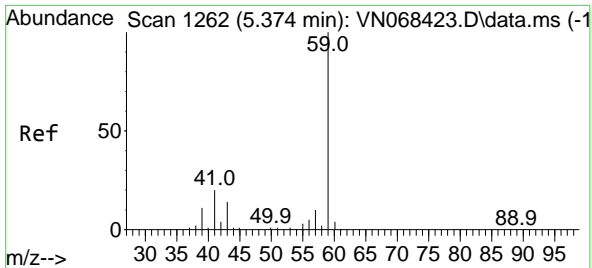


#5
 Bromomethane
 Concen: Below Cal
 RT: 2.851 min Scan# 321
 Delta R.T. 0.011 min
 Lab File: VN068554.D
 Acq: 18 Sep 2021 6:53



Tgt Ion: 94 Resp: 53
 Ion Ratio Lower Upper
 94 100
 96 158.3 75.4 113.0#

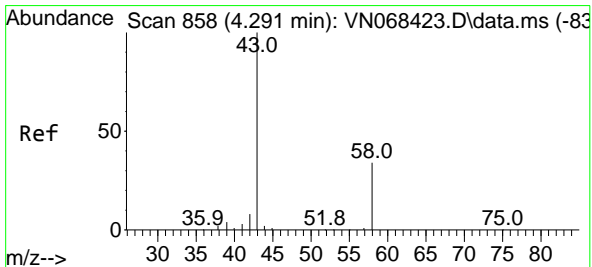
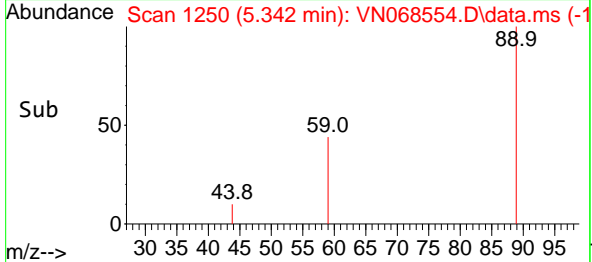
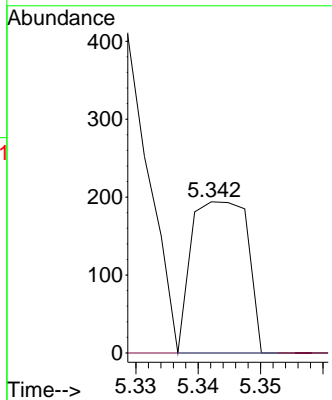
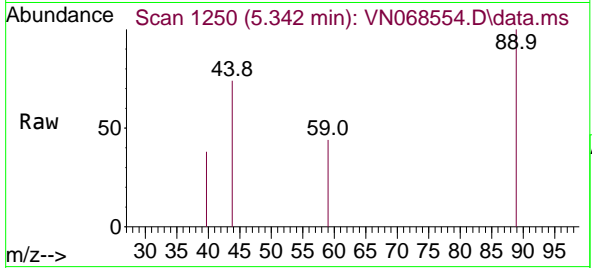




#11
 Tert butyl alcohol
 Concen: Below Cal
 RT: 5.342 min Scan# 1250
 Delta R.T. -0.032 min
 Lab File: VN068554.D
 Acq: 18 Sep 2021 6:53

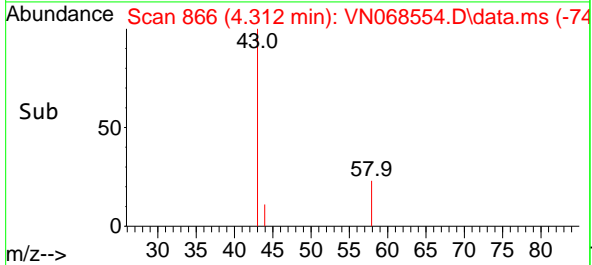
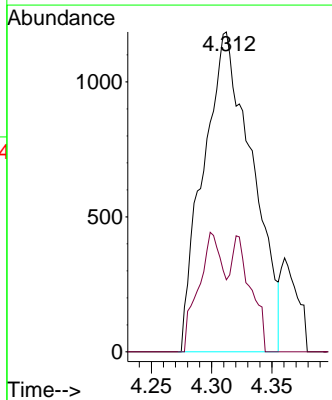
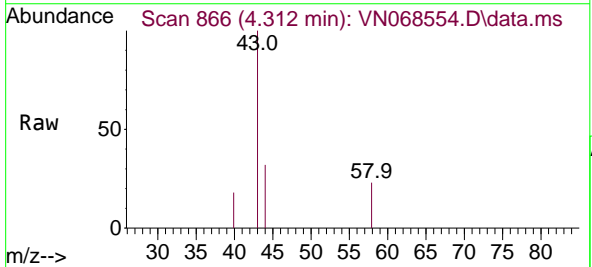
Instrument :
 MSVOA_N
 ClientSampled :
 DUPLICATE-2

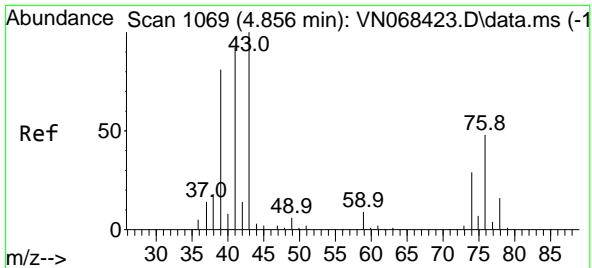
Tgt Ion: 59 Resp: 121
 Ion Ratio Lower Upper
 59 100
 57 0.0 4.3 6.5#



#16
 Acetone
 Concen: Below Cal
 RT: 4.312 min Scan# 866
 Delta R.T. 0.021 min
 Lab File: VN068554.D
 Acq: 18 Sep 2021 6:53

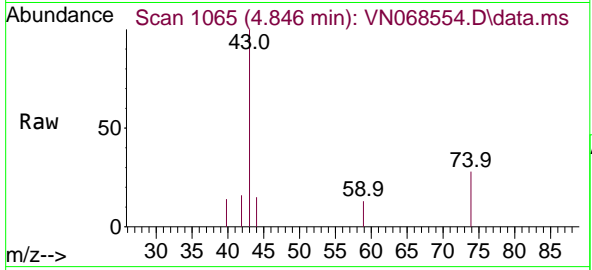
Tgt Ion: 43 Resp: 3339
 Ion Ratio Lower Upper
 43 100
 58 22.5 27.0 40.6#



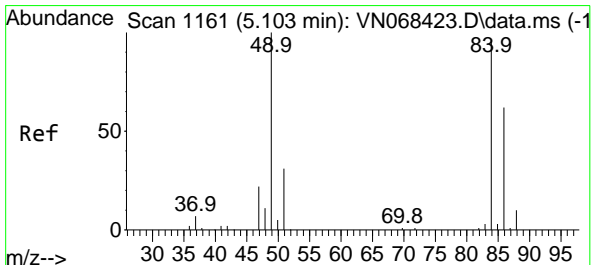
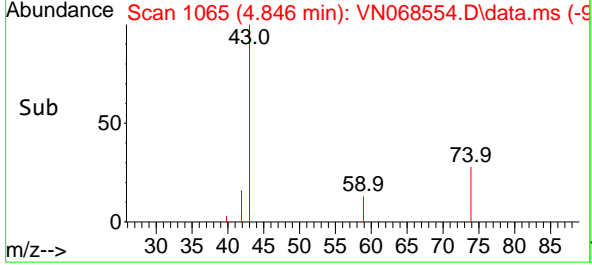
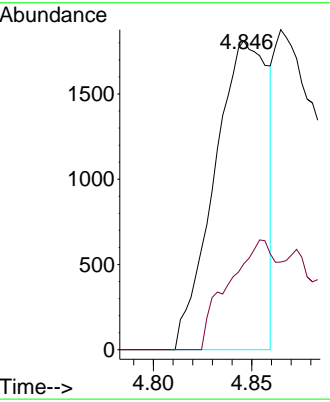


#18
 Methyl Acetate
 Concen: Below Cal
 RT: 4.846 min Scan# 1065
 Delta R.T. -0.010 min
 Lab File: VN068554.D
 Acq: 18 Sep 2021 6:53

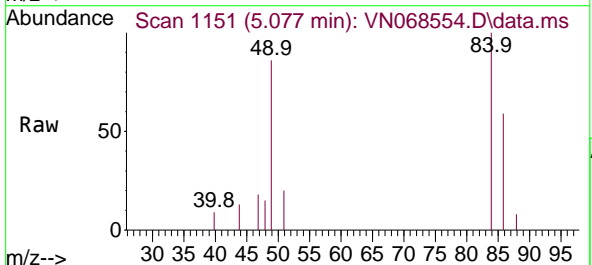
Instrument :
 MSVOA_N
 ClientSampled :
 DUPLICATE-2



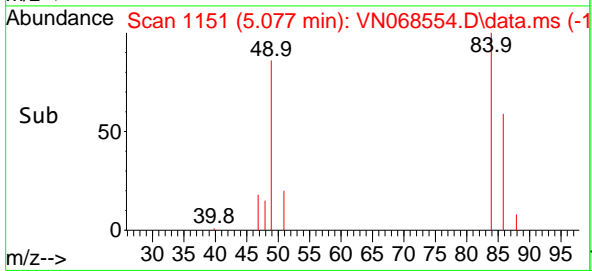
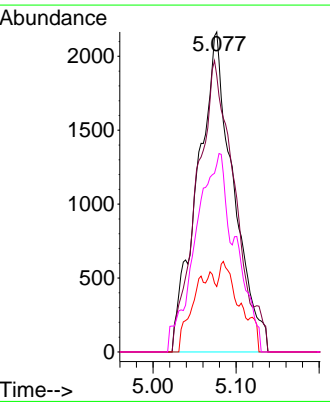
Tgt Ion: 43 Resp: 3414
 Ion Ratio Lower Upper
 43 100
 74 32.6 23.5 35.3

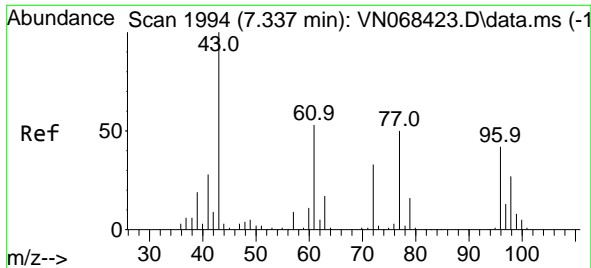


#20
 Methylene Chloride
 Concen: Below Cal
 RT: 5.077 min Scan# 1151
 Delta R.T. -0.026 min
 Lab File: VN068554.D
 Acq: 18 Sep 2021 6:53



Tgt Ion: 84 Resp: 6472
 Ion Ratio Lower Upper
 84 100
 49 86.4 83.0 124.6
 51 20.5 25.4 38.0#
 86 58.6 51.3 76.9

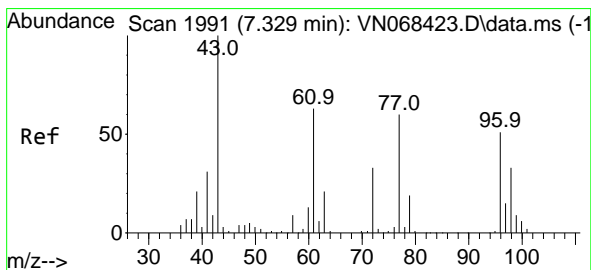
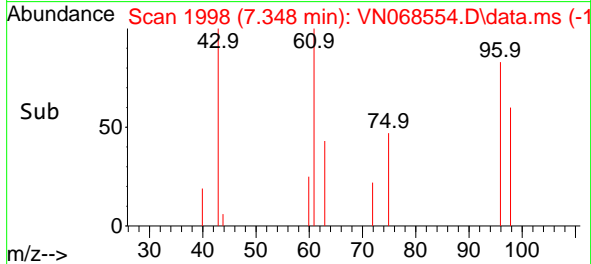
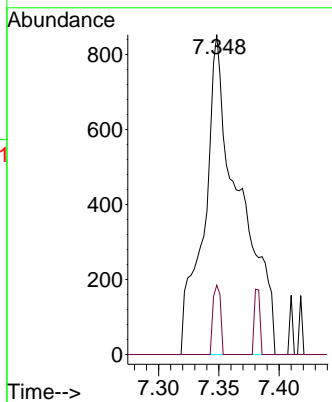
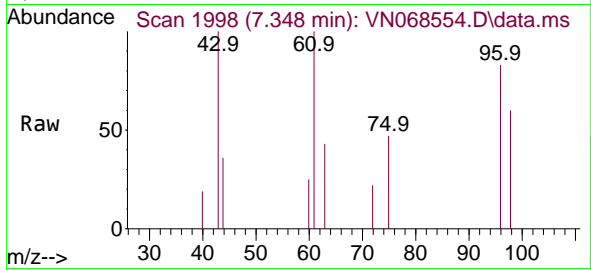




#25
 2-Butanone
 Concen: 0.595 ug/l
 RT: 7.348 min Scan# 1998
 Delta R.T. 0.011 min
 Lab File: VN068554.D
 Acq: 18 Sep 2021 6:53

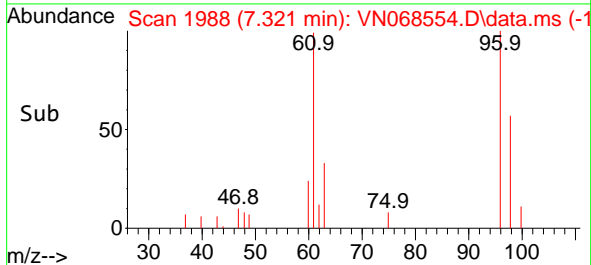
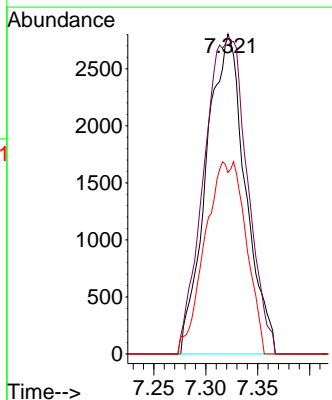
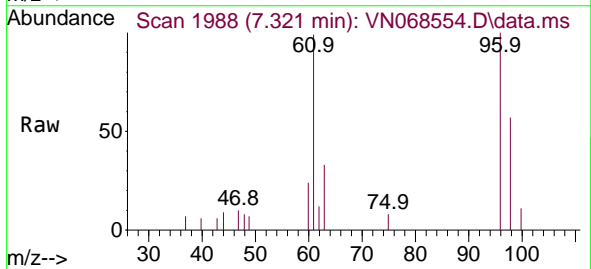
Instrument :
 MSVOA_N
 ClientSampled :
 DUPLICATE-2

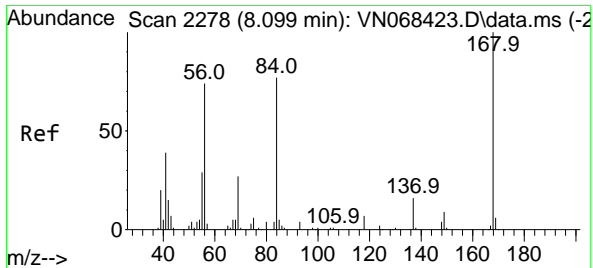
Tgt Ion: 43 Resp: 1729
 Ion Ratio Lower Upper
 43 100
 72 21.7 26.7 40.1#



#27
 cis-1,2-Dichloroethene
 Concen: 1.070 ug/l
 RT: 7.321 min Scan# 1988
 Delta R.T. -0.008 min
 Lab File: VN068554.D
 Acq: 18 Sep 2021 6:53

Tgt Ion: 96 Resp: 7348
 Ion Ratio Lower Upper
 96 100
 61 109.9 0.0 246.4
 98 36.6 0.0 130.4

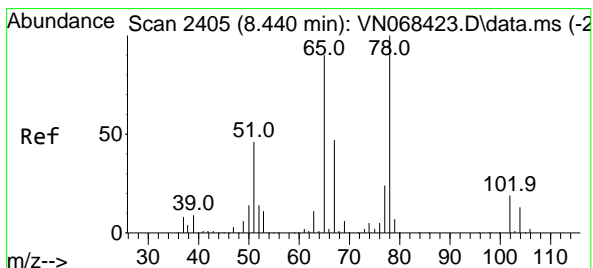
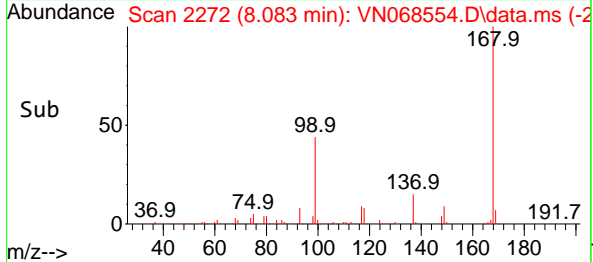
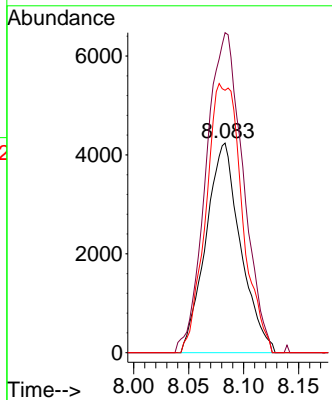
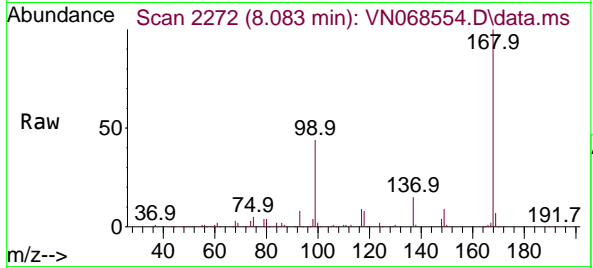




#31
 Cyclohexane
 Concen: 1.028 ug/l
 RT: 8.083 min Scan# 2272
 Delta R.T. -0.016 min
 Lab File: VN068554.D
 Acq: 18 Sep 2021 6:53

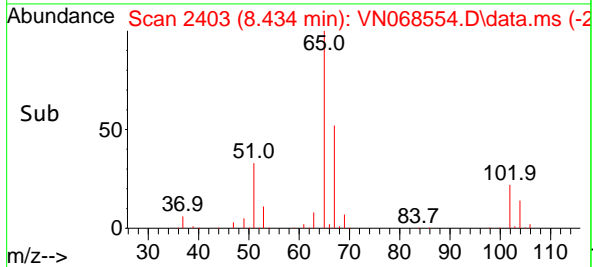
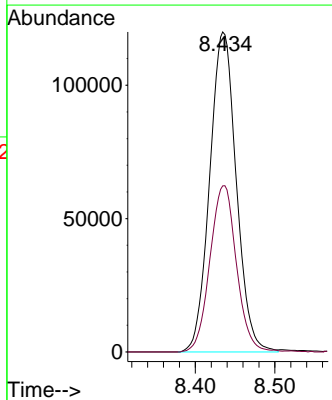
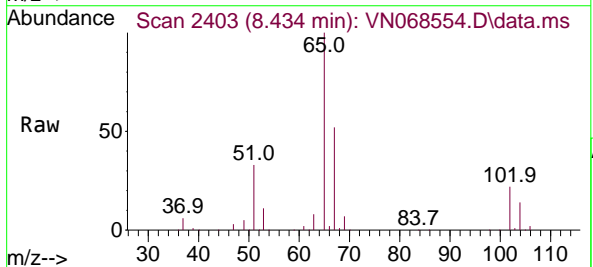
Instrument :
 MSVOA_N
ClientSampled :
 DUPLICATE-2

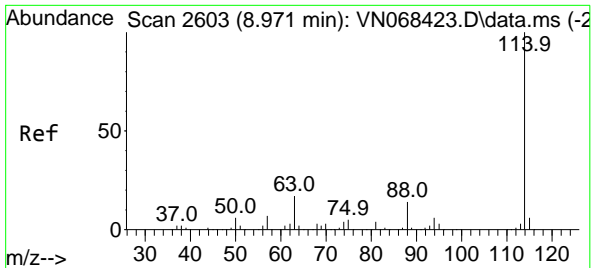
Tgt Ion	Resp	Lower	Upper
56	100		
69	152.7	29.4	44.0#
84	125.2	83.6	125.4



#33
 1,2-Dichloroethane-d4
 Concen: 46.570 ug/l
 RT: 8.434 min Scan# 2403
 Delta R.T. -0.006 min
 Lab File: VN068554.D
 Acq: 18 Sep 2021 6:53

Tgt Ion	Resp	Lower	Upper
65	100		
67	51.9	0.0	104.0

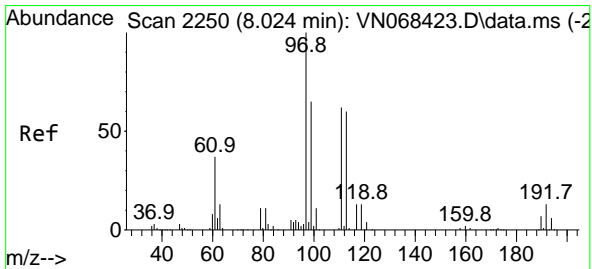
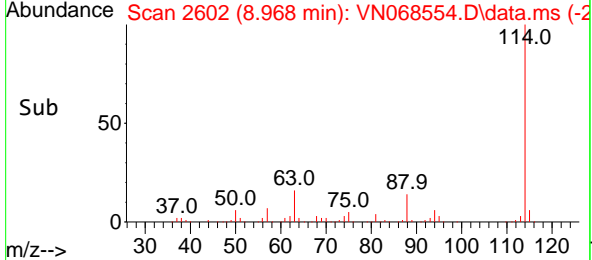
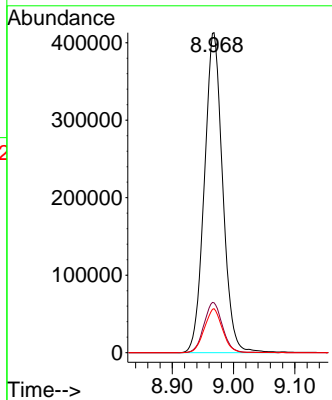
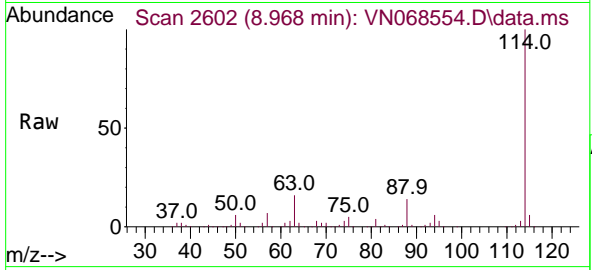




#34
 1,4-Difluorobenzene
 Concen: 50.000 ug/l
 RT: 8.968 min Scan# 2602
 Delta R.T. -0.003 min
 Lab File: VN068554.D
 Acq: 18 Sep 2021 6:53

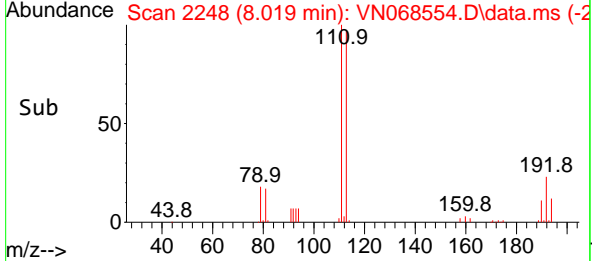
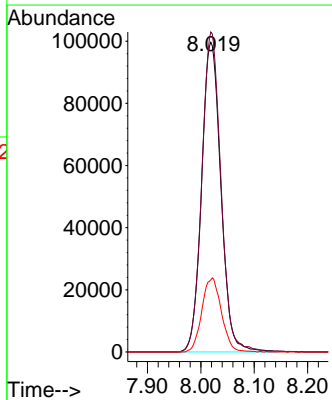
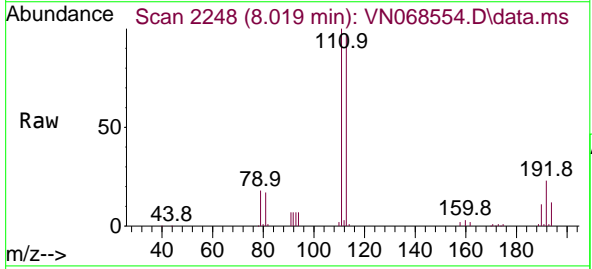
Instrument :
 MSVOA_N
 ClientSampled :
 DUPLICATE-2

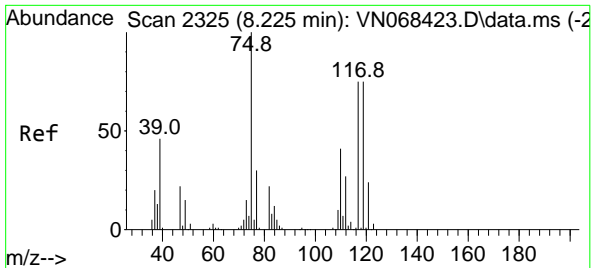
Tgt Ion	Resp	Lower	Upper
114	100		
63	15.6	0.0	33.2
88	13.7	0.0	28.4



#35
 Dibromofluoromethane
 Concen: 48.390 ug/l
 RT: 8.019 min Scan# 2248
 Delta R.T. -0.005 min
 Lab File: VN068554.D
 Acq: 18 Sep 2021 6:53

Tgt Ion	Resp	Lower	Upper
113	100		
111	102.4	81.1	121.7
192	24.2	17.7	26.5

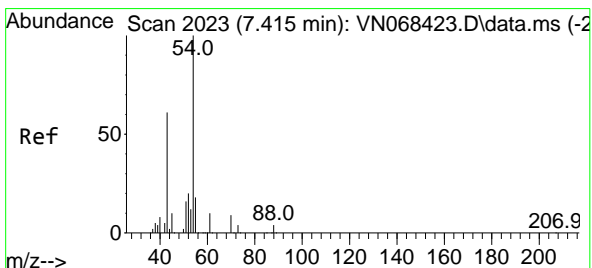
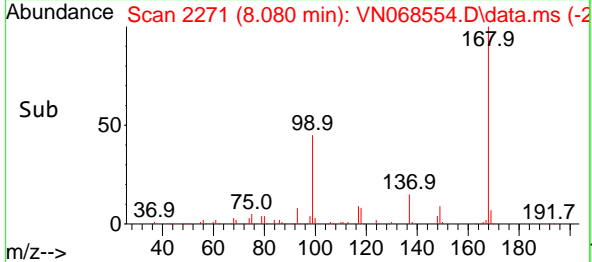
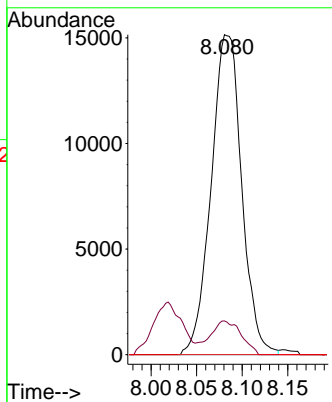
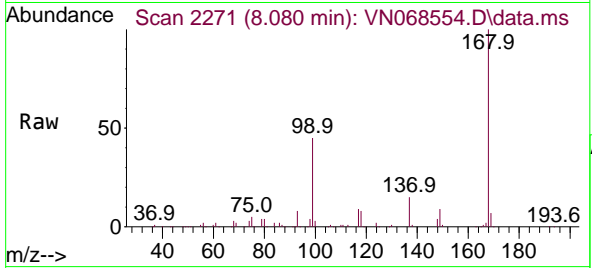




#36
 1,1-Dichloropropene
 Concen: 4.953 ug/l
 RT: 8.080 min Scan# 2271
 Delta R.T. -0.145 min
 Lab File: VN068554.D
 Acq: 18 Sep 2021 6:53

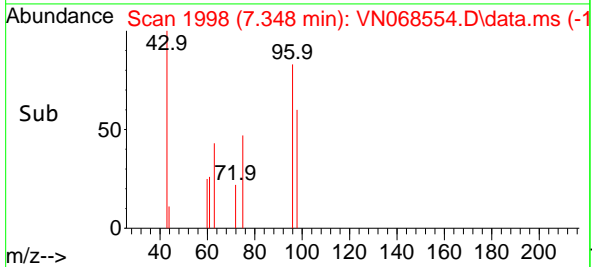
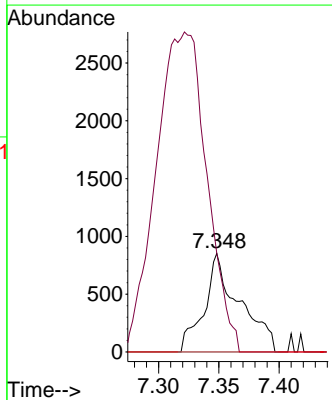
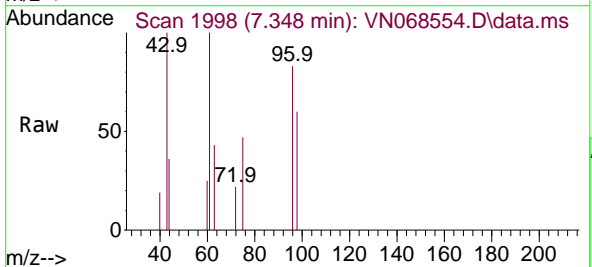
Instrument :
 MSVOA_N
ClientSampled :
 DUPLICATE-2

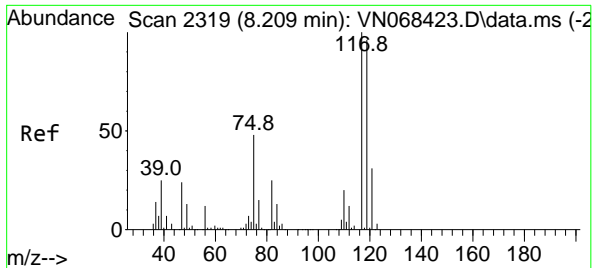
Tgt Ion	Resp	Lower	Upper
75	35336		
75	100		
110	10.2	20.8	62.5#
77	0.0	25.0	37.6#



#37
 Ethyl Acetate
 Concen: 0.319 ug/l
 RT: 7.348 min Scan# 1998
 Delta R.T. -0.067 min
 Lab File: VN068554.D
 Acq: 18 Sep 2021 6:53

Tgt Ion	Resp	Lower	Upper
43	1729		
43	100		
61	0.0	12.4	18.6#
70	0.0	9.6	14.4#

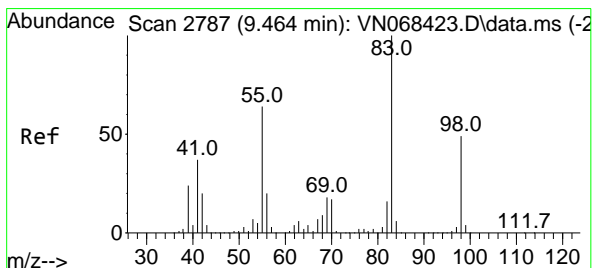
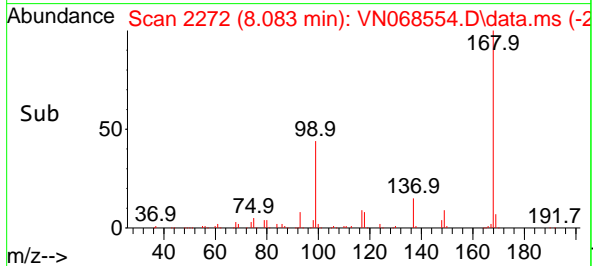
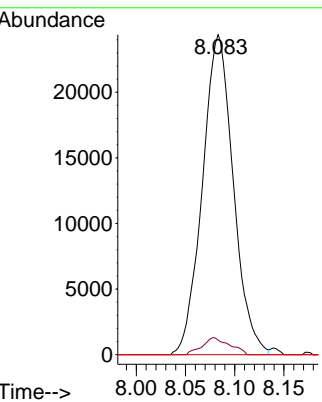
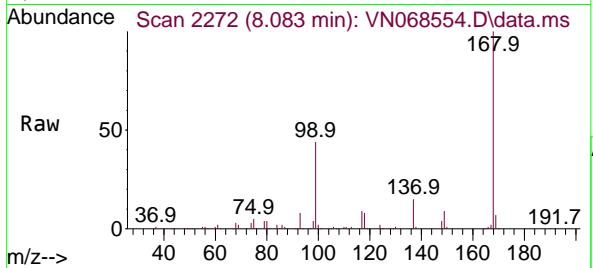




#38
 Carbon Tetrachloride
 Concen: 6.241 ug/l
 RT: 8.083 min Scan# 2272
 Delta R.T. -0.126 min
 Lab File: VN068554.D
 Acq: 18 Sep 2021 6:53

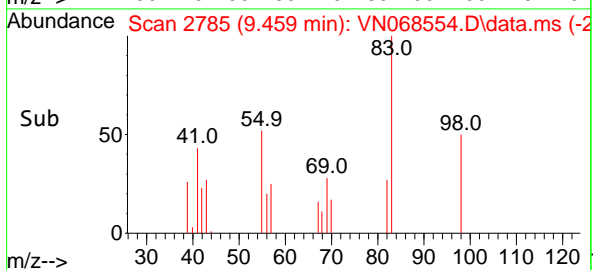
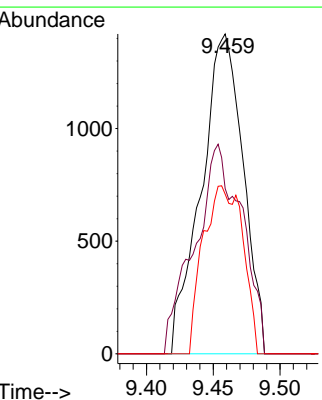
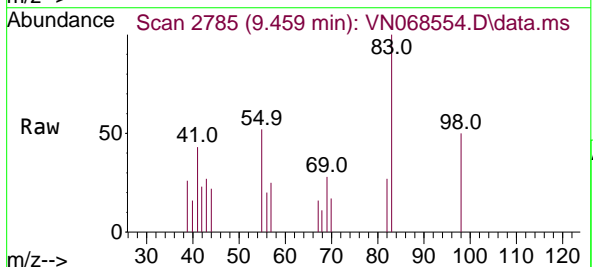
Instrument :
 MSVOA_N
 ClientSampled :
 DUPLICATE-2

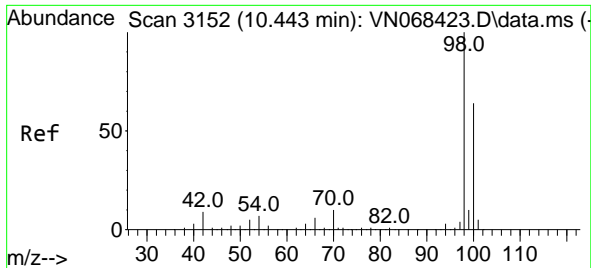
Tgt Ion	Resp	Lower	Upper
117	53343		
117	100		
119	4.5	76.6	114.8#
121	0.0	24.5	36.7#



#39
 Methylcyclohexane
 Concen: 0.345 ug/l
 RT: 9.459 min Scan# 2785
 Delta R.T. -0.005 min
 Lab File: VN068554.D
 Acq: 18 Sep 2021 6:53

Tgt Ion	Resp	Lower	Upper
83	3113		
83	100		
55	51.7	51.0	76.4
98	49.9	39.5	59.3

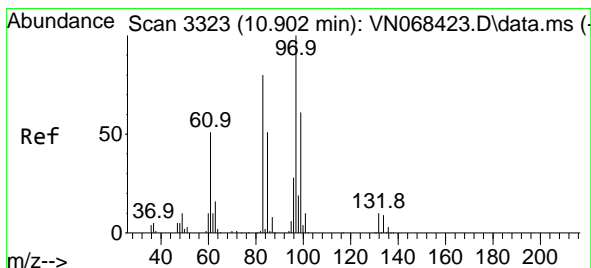
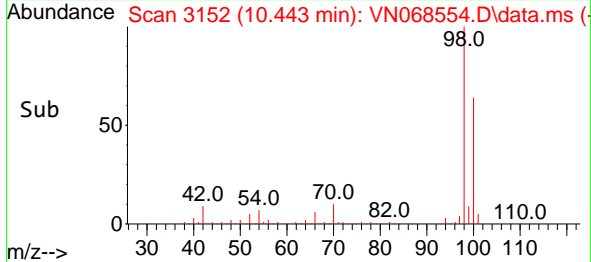
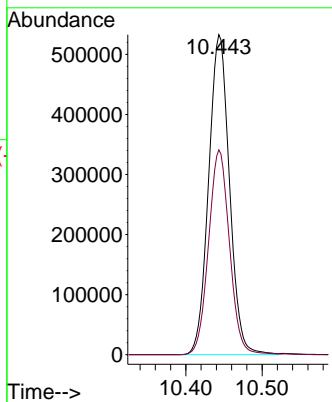
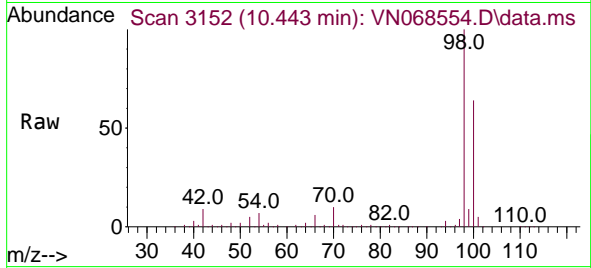




#50
 Toluene-d8
 Concen: 47.954 ug/l
 RT: 10.443 min Scan# 3152
 Delta R.T. 0.000 min
 Lab File: VN068554.D
 Acq: 18 Sep 2021 6:53

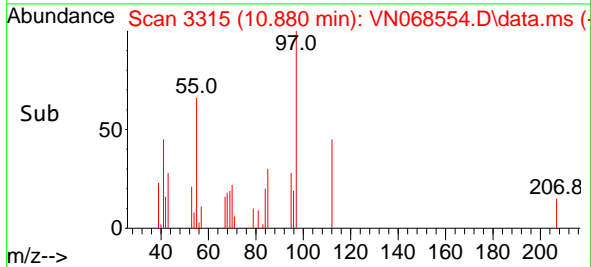
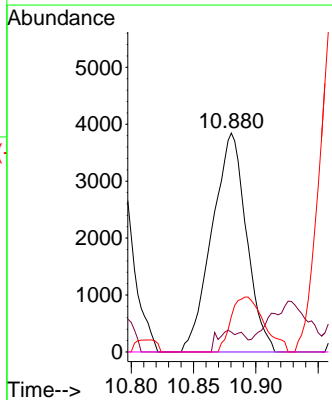
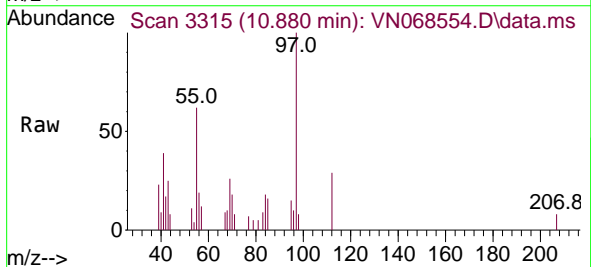
Instrument :
 MSVOA_N
 ClientSampled :
 DUPLICATE-2

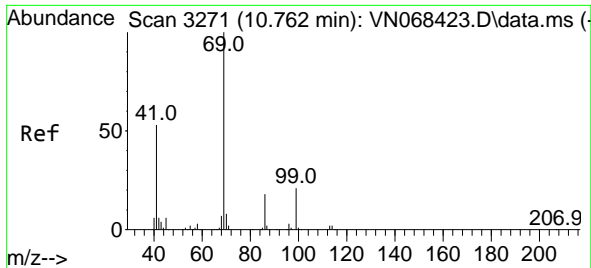
Tgt Ion: 98 Resp: 1011810
 Ion Ratio Lower Upper
 98 100
 100 64.2 51.0 76.6



#55
 1,1,2-Trichloroethane
 Concen: 1.325 ug/l
 RT: 10.880 min Scan# 3315
 Delta R.T. -0.022 min
 Lab File: VN068554.D
 Acq: 18 Sep 2021 6:53

Tgt Ion: 97 Resp: 7369
 Ion Ratio Lower Upper
 97 100
 83 9.1 63.7 95.5#
 85 16.2 40.7 61.1#
 99 0.0 49.0 73.6#



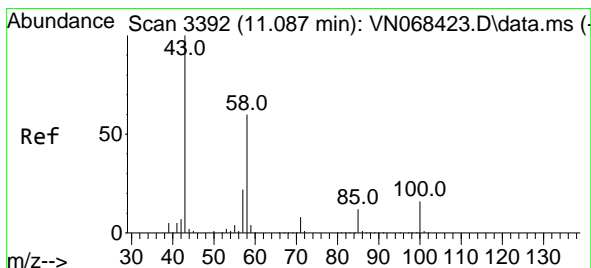
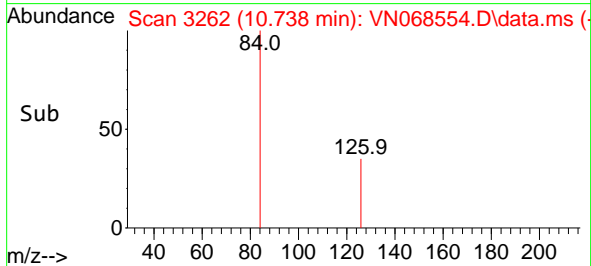
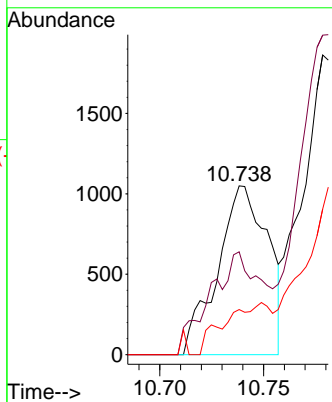
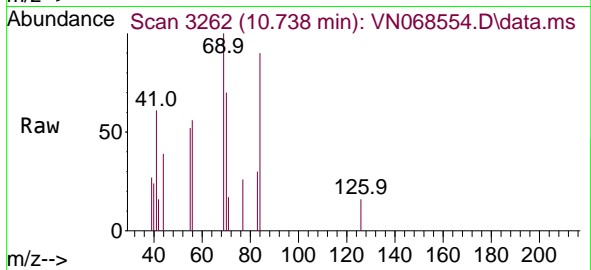


#56
 Ethyl methacrylate
 Concen: 0.254 ug/l
 RT: 10.738 min Scan# 3262
 Delta R.T. -0.024 min
 Lab File: VN068554.D
 Acq: 18 Sep 2021 6:53

Instrument :
 MSVOA_N
 ClientSampled :
 DUPLICATE-2

Tgt Ion: 69 Resp: 1756

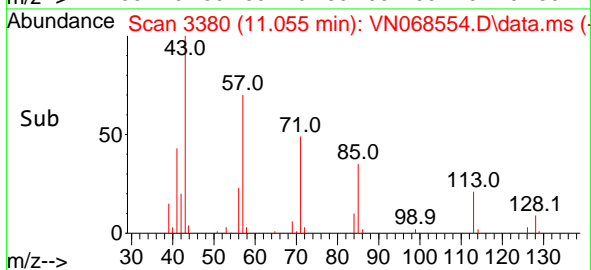
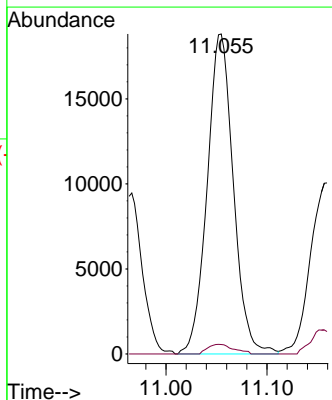
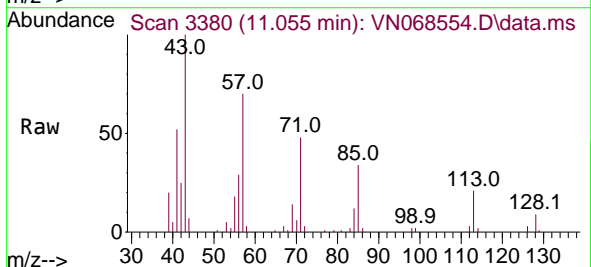
Ion	Ratio	Lower	Upper
69	100		
41	63.6	42.4	63.6
39	28.5	28.5	42.7

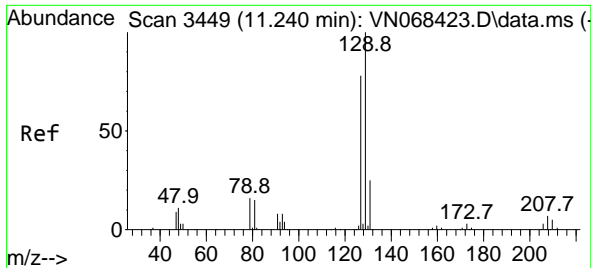


#59
 2-Hexanone
 Concen: 9.265 ug/l
 RT: 11.055 min Scan# 3380
 Delta R.T. -0.032 min
 Lab File: VN068554.D
 Acq: 18 Sep 2021 6:53

Tgt Ion: 43 Resp: 33914

Ion	Ratio	Lower	Upper
43	100		
58	3.0	30.0	90.1#

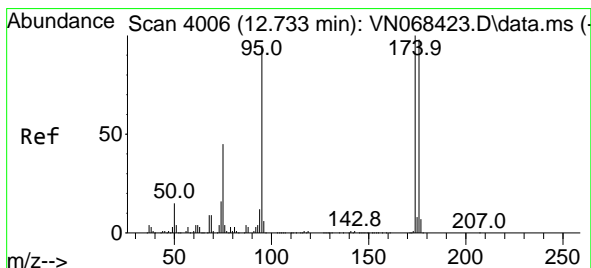
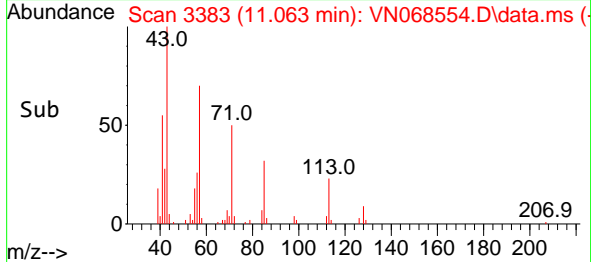
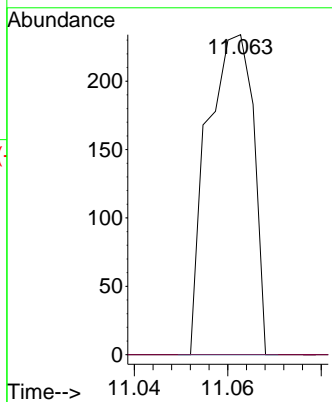
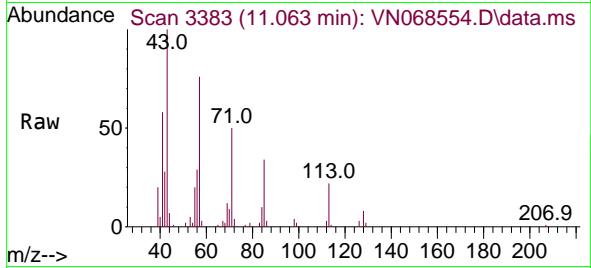




#60
 Dibromochloromethane
 Concen: 1.823 ug/l
 RT: 11.063 min Scan# 3383
 Delta R.T. -0.177 min
 Lab File: VN068554.D
 Acq: 18 Sep 2021 6:53

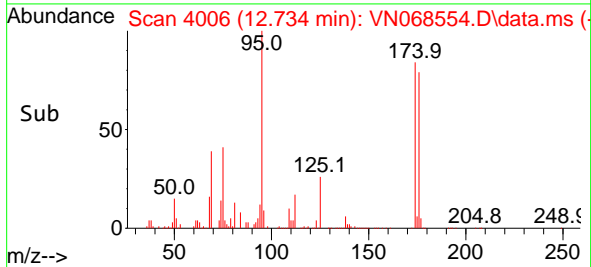
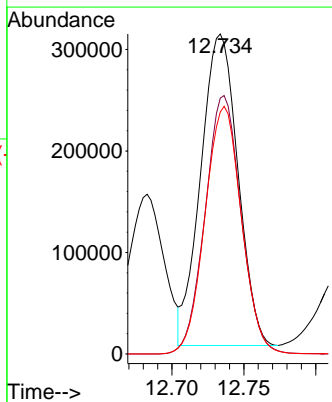
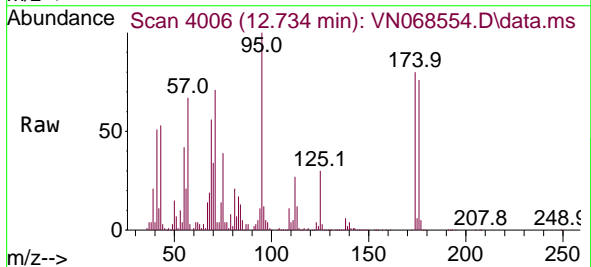
Instrument :
 MSVOA_N
ClientSampled :
 DUPLICATE-2

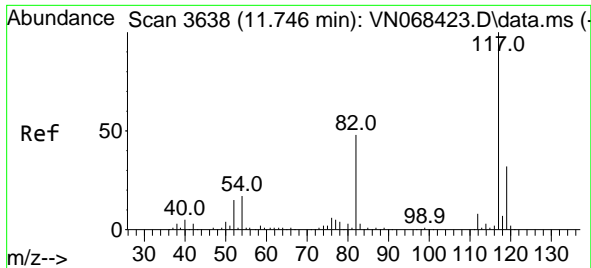
Tgt Ion:129 Resp: 160
 Ion Ratio Lower Upper
 129 100
 127 0.0 38.5 115.3#



#62
 4-Bromofluorobenzene
 Concen: 76.505 ug/l
 RT: 12.734 min Scan# 4006
 Delta R.T. 0.001 min
 Lab File: VN068554.D
 Acq: 18 Sep 2021 6:53

Tgt Ion: 95 Resp: 550613
 Ion Ratio Lower Upper
 95 100
 174 80.5 0.0 214.0
 176 78.2 0.0 205.4



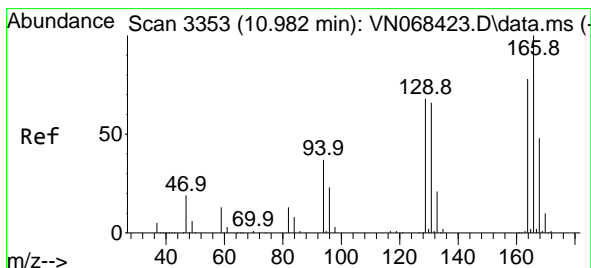
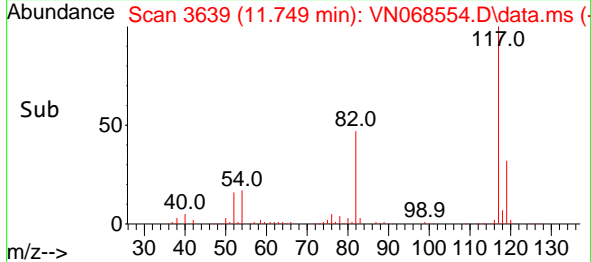
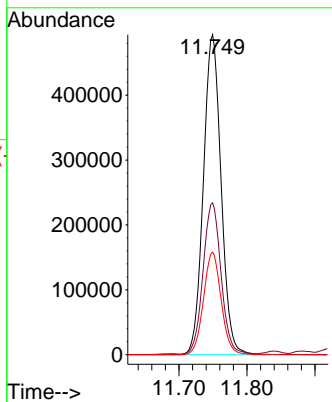
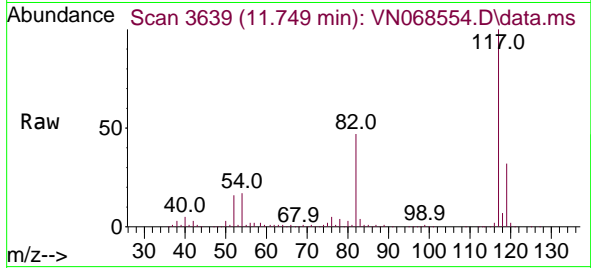


#63
 Chlorobenzene-d5
 Concen: 50.000 ug/l
 RT: 11.749 min Scan# 3639
 Delta R.T. 0.003 min
 Lab File: VN068554.D
 Acq: 18 Sep 2021 6:53

Instrument :
 MSVOA_N
 ClientSampled :
 DUPLICATE-2

Tgt Ion:117 Resp: 892611

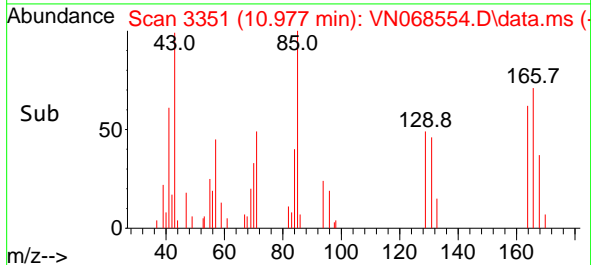
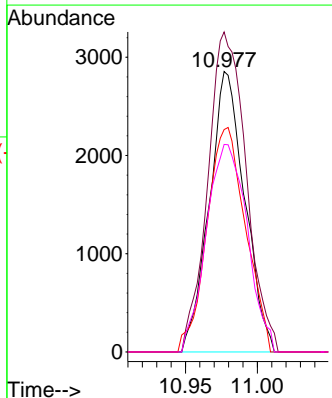
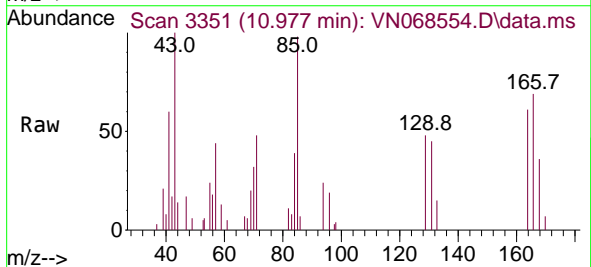
Ion	Ratio	Lower	Upper
117	100		
82	47.3	38.7	58.1
119	32.0	25.5	38.3

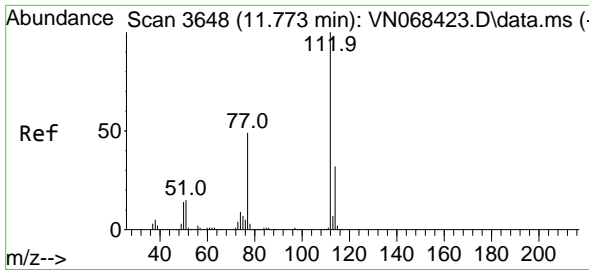


#64
 Tetrachloroethene
 Concen: 0.618 ug/l
 RT: 10.977 min Scan# 3351
 Delta R.T. -0.005 min
 Lab File: VN068554.D
 Acq: 18 Sep 2021 6:53

Tgt Ion:164 Resp: 4893

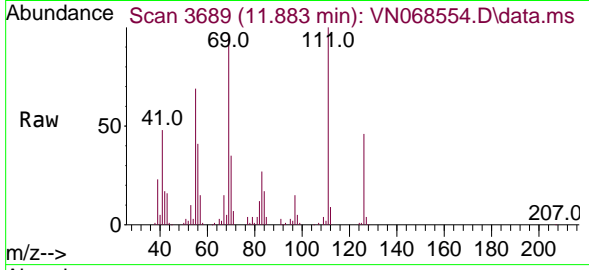
Ion	Ratio	Lower	Upper
164	100		
166	114.1	102.9	154.3
129	79.3	70.1	105.1
131	74.0	67.8	101.6



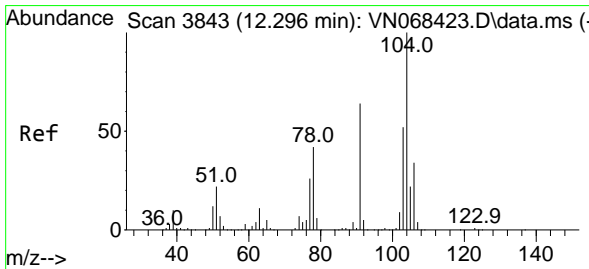
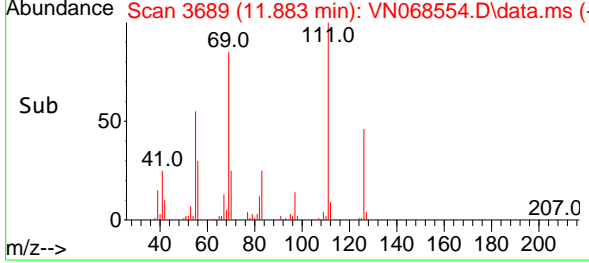
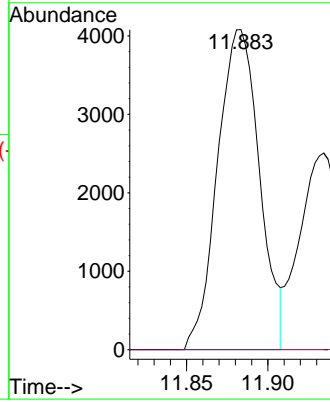


#65
 Chlorobenzene
 Concen: 0.400 ug/l
 RT: 11.883 min Scan# 3689
 Delta R.T. 0.110 min
 Lab File: VN068554.D
 Acq: 18 Sep 2021 6:53

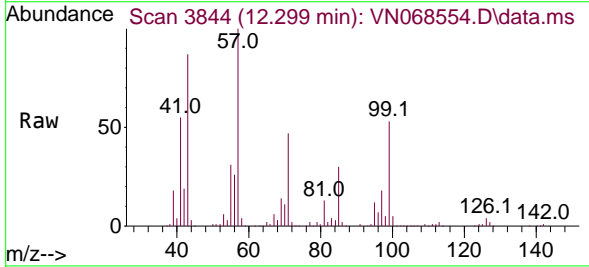
Instrument :
 MSVOA_N
 ClientSampled :
 DUPLICATE-2



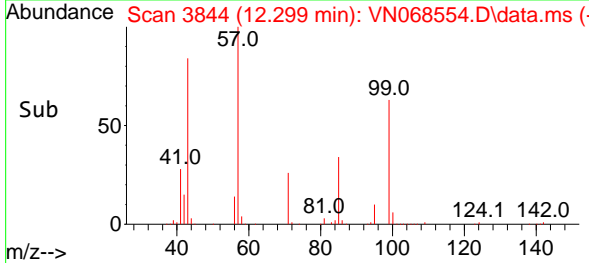
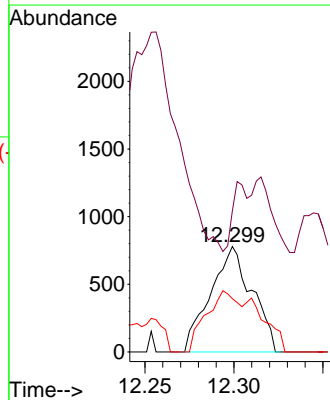
Tgt Ion:112 Resp: 7342
 Ion Ratio Lower Upper
 112 100
 114 0.0 25.8 38.8#

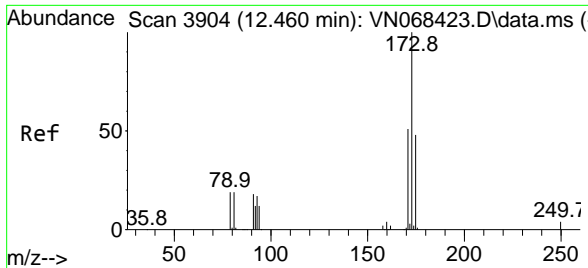


#70
 Styrene
 Concen: 1.813 ug/l
 RT: 12.299 min Scan# 3844
 Delta R.T. 0.003 min
 Lab File: VN068554.D
 Acq: 18 Sep 2021 6:53



Tgt Ion:104 Resp: 1267
 Ion Ratio Lower Upper
 104 100
 78 22.1 36.2 54.2#
 103 45.9 44.4 66.6

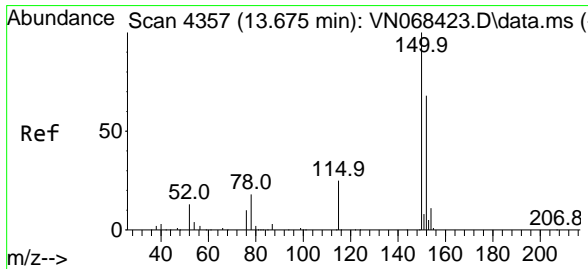
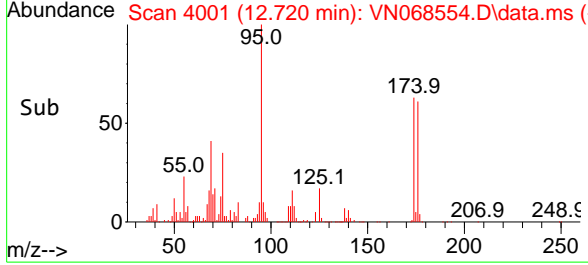
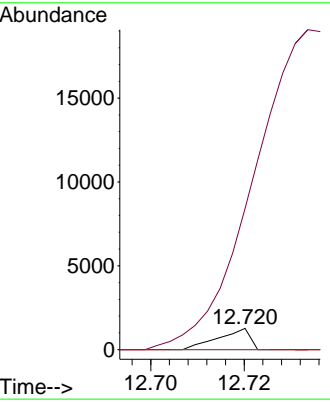
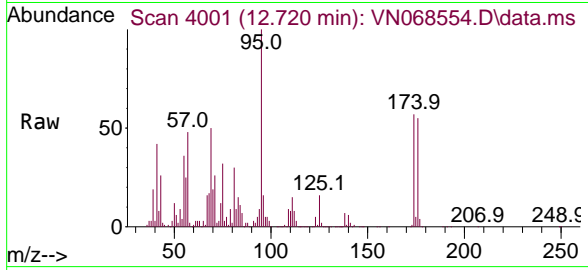




#71
 Bromoform
 Concen: 2.610 ug/l
 RT: 12.720 min Scan# 4001
 Delta R.T. 0.260 min
 Lab File: VN068554.D
 Acq: 18 Sep 2021 6:53

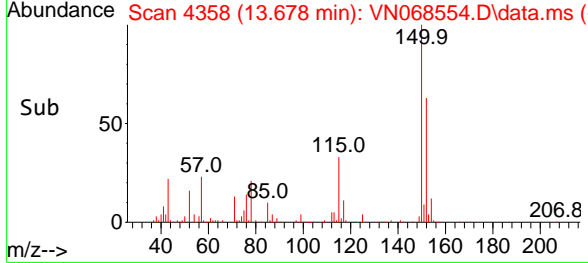
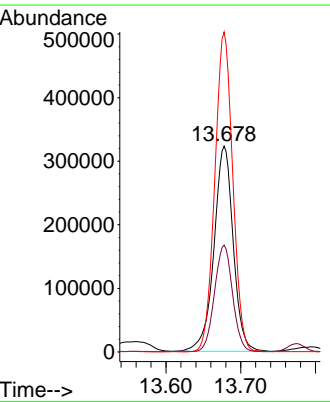
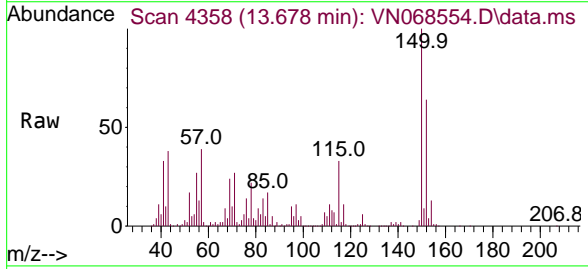
Instrument :
 MSVOA_N
ClientSampled :
 DUPLICATE-2

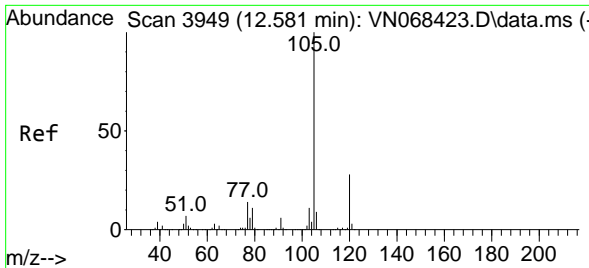
Tgt Ion	Resp	Lower	Upper
173	100		
175	5053.3	24.1	72.3#
254	0.0	0.0	0.0



#72
 1,4-Dichlorobenzene-d4
 Concen: 50.000 ug/l
 RT: 13.678 min Scan# 4358
 Delta R.T. 0.003 min
 Lab File: VN068554.D
 Acq: 18 Sep 2021 6:53

Tgt Ion	Resp	Lower	Upper
152	100		
115	48.5	25.6	76.6
150	145.3	0.0	346.8

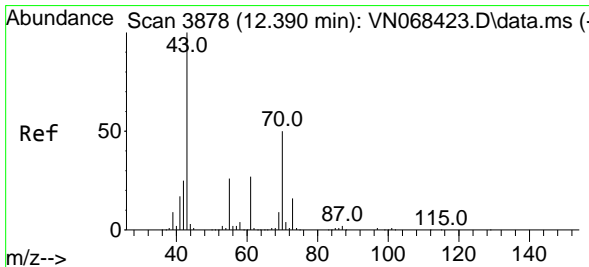
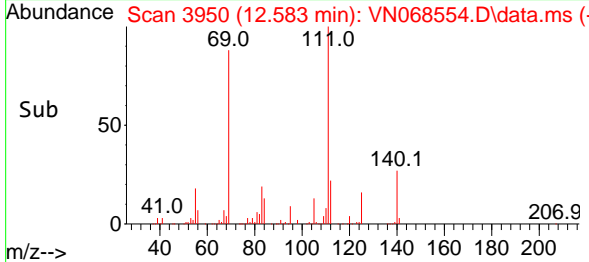
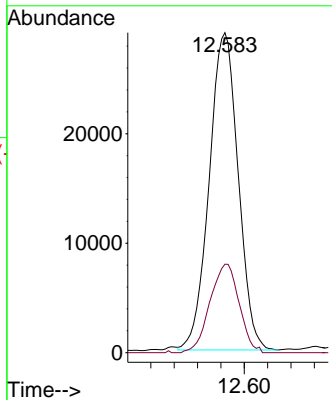
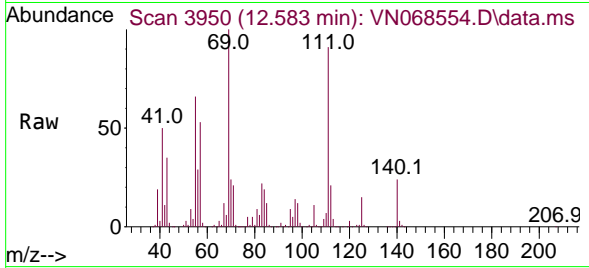




#73
 Isopropylbenzene
 Concen: 1.213 ug/l
 RT: 12.583 min Scan# 3950
 Delta R.T. 0.002 min
 Lab File: VN068554.D
 Acq: 18 Sep 2021 6:53

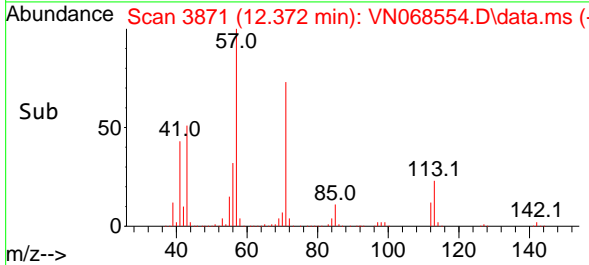
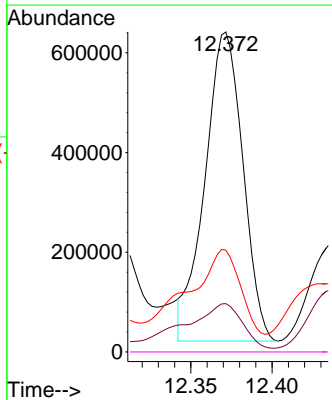
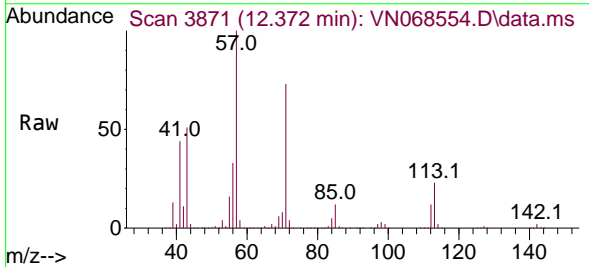
Instrument :
 MSVOA_N
ClientSampled :
 DUPLICATE-2

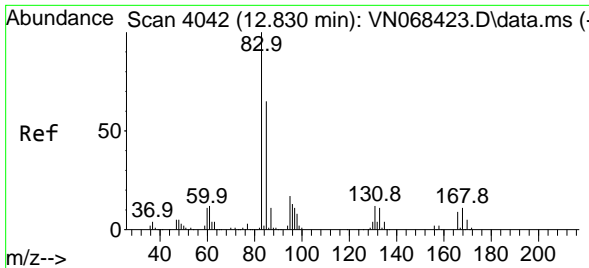
Tgt Ion:105 Resp: 49857
 Ion Ratio Lower Upper
 105 100
 120 28.1 14.1 42.3



#74
 N-amy1 acetate
 Concen: 110.306 ug/l
 RT: 12.372 min Scan# 3871
 Delta R.T. -0.018 min
 Lab File: VN068554.D
 Acq: 18 Sep 2021 6:53

Tgt Ion: 43 Resp: 1011210
 Ion Ratio Lower Upper
 43 100
 70 21.8 40.0 60.0#
 55 36.8 21.1 31.7#
 61 0.0 21.2 31.8#

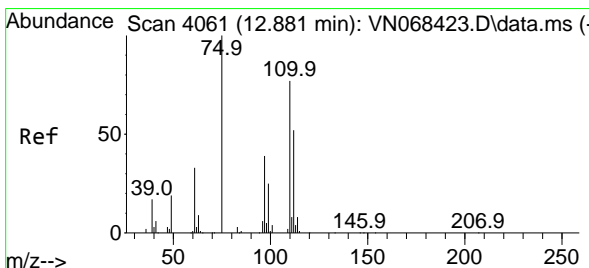
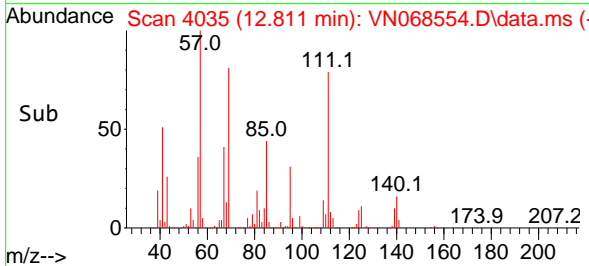
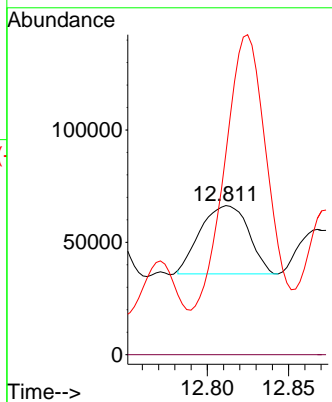
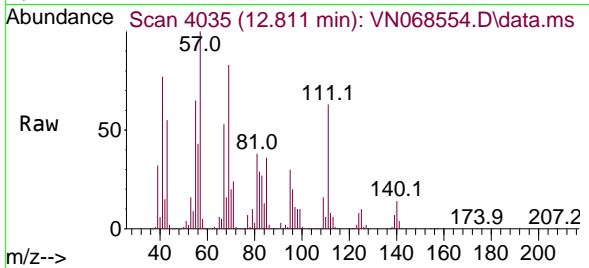




#75
 1,1,2,2-Tetrachloroethane
 Concen: 5.452 ug/l
 RT: 12.811 min Scan# 4035
 Delta R.T. -0.019 min
 Lab File: VN068554.D
 Acq: 18 Sep 2021 6:53

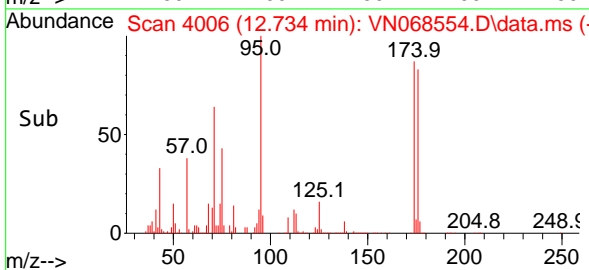
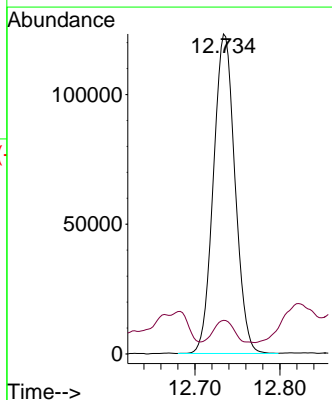
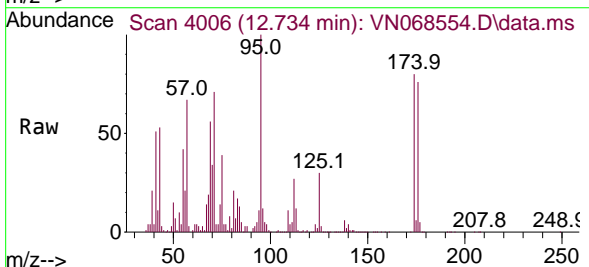
Instrument :
 MSVOA_N
ClientSampled :
 DUPLICATE-2

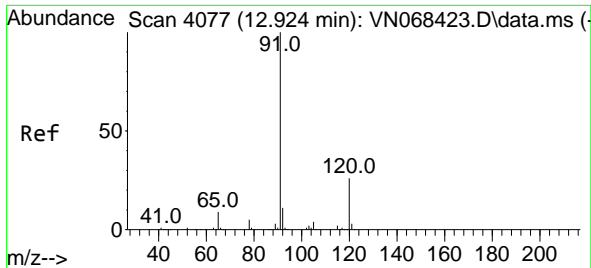
Tgt Ion	Resp	Lower	Upper
83	100		
131	0.0	6.3	19.1#
85	347.8	32.5	97.4#



#76
 1,2,3-Trichloropropane
 Concen: 26.798 ug/l
 RT: 12.734 min Scan# 4006
 Delta R.T. -0.147 min
 Lab File: VN068554.D
 Acq: 18 Sep 2021 6:53

Tgt Ion	Resp	Lower	Upper
75	100		
77	6.4	100.9	302.7#

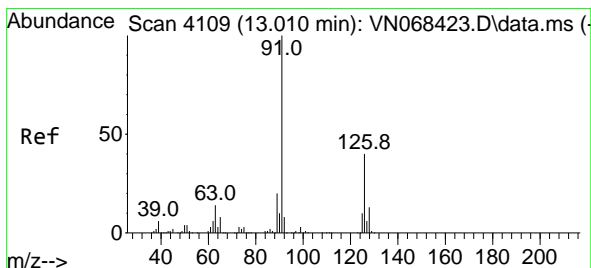
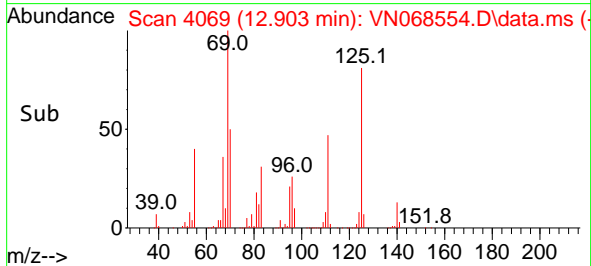
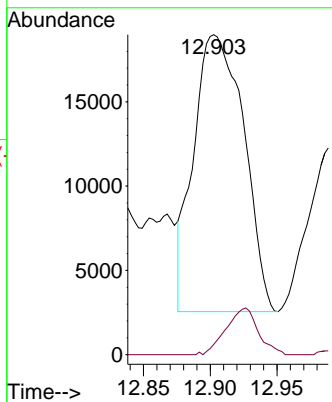
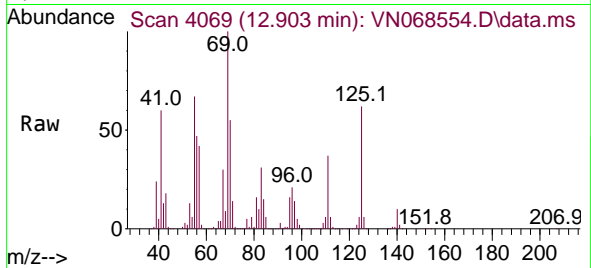




#78
 n-propylbenzene
 Concen: 0.988 ug/l
 RT: 12.903 min Scan# 4069
 Delta R.T. -0.021 min
 Lab File: VN068554.D
 Acq: 18 Sep 2021 6:53

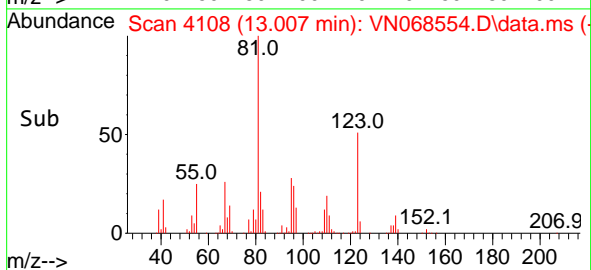
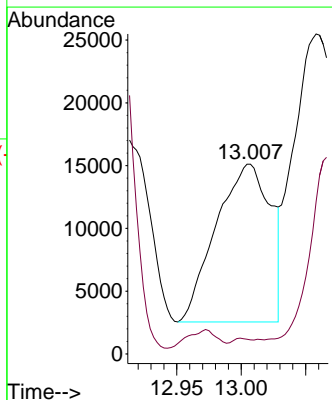
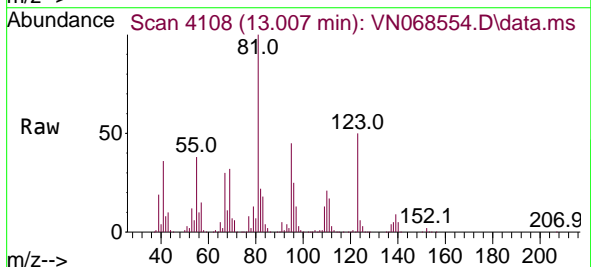
Instrument :
 MSVOA_N
 ClientSampled :
 DUPLICATE-2

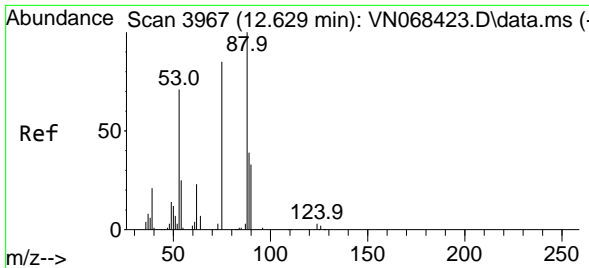
Tgt Ion: 91 Resp: 42882
 Ion Ratio Lower Upper
 91 100
 120 0.0 13.2 39.6#



#79
 2-Chlorotoluene
 Concen: 1.384 ug/l
 RT: 13.007 min Scan# 4108
 Delta R.T. -0.003 min
 Lab File: VN068554.D
 Acq: 18 Sep 2021 6:53

Tgt Ion: 91 Resp: 37024
 Ion Ratio Lower Upper
 91 100
 126 0.0 20.1 60.3#

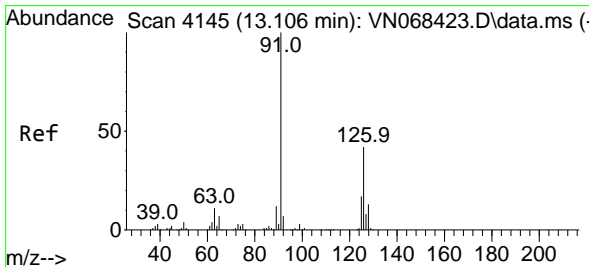
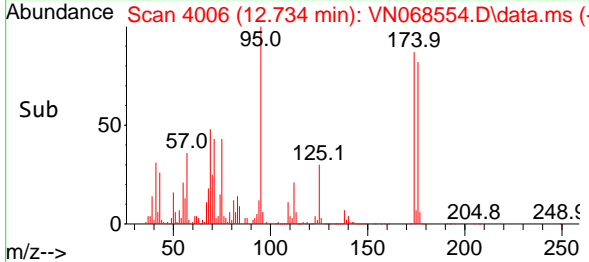
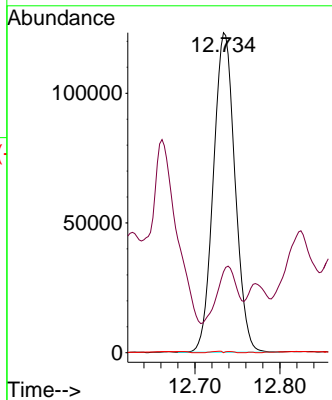
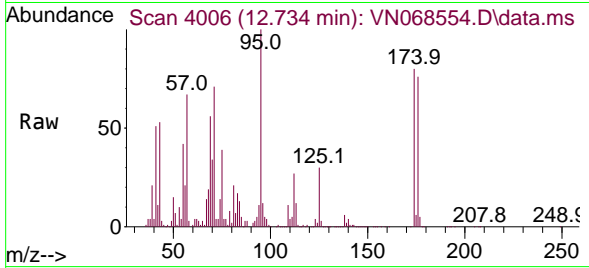




#81
 trans-1,4-Dichloro-2-butene
 Concen: 83.223 ug/l
 RT: 12.734 min Scan# 4006
 Delta R.T. 0.105 min
 Lab File: VN068554.D
 Acq: 18 Sep 2021 6:53

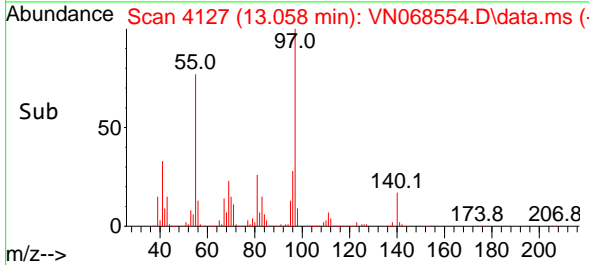
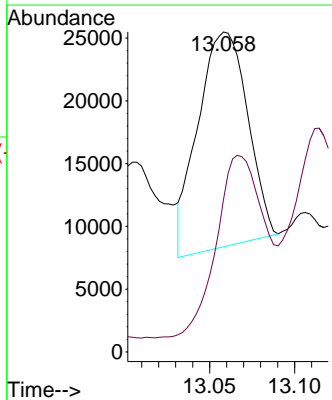
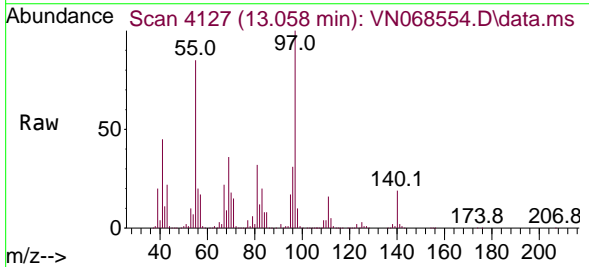
Instrument :
 MSVOA_N
ClientSampled :
 DUPLICATE-2

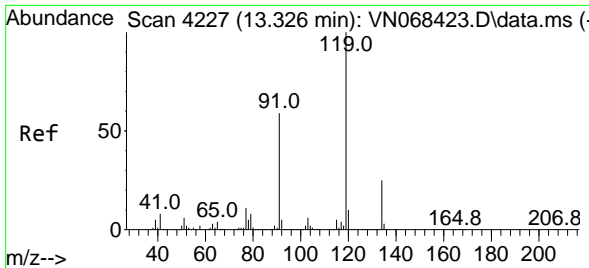
Tgt Ion	Resp	Lower	Upper
75	100		
53	16.3	70.6	105.8#
89	0.1	39.5	59.3#



#82
 4-Chlorotoluene
 Concen: 1.352 ug/l
 RT: 13.058 min Scan# 4127
 Delta R.T. -0.048 min
 Lab File: VN068554.D
 Acq: 18 Sep 2021 6:53

Tgt Ion	Resp	Lower	Upper
91	100		
126	82.5	19.8	59.3#



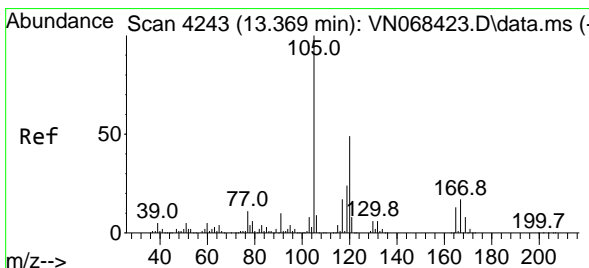
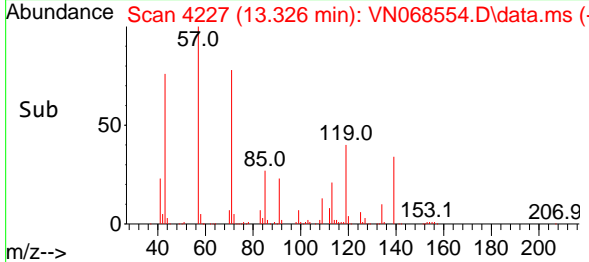
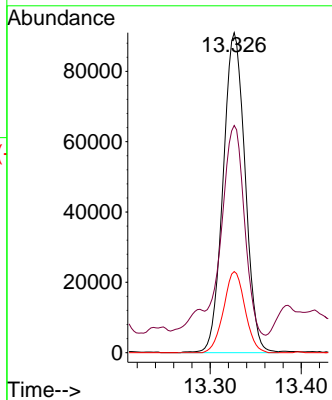
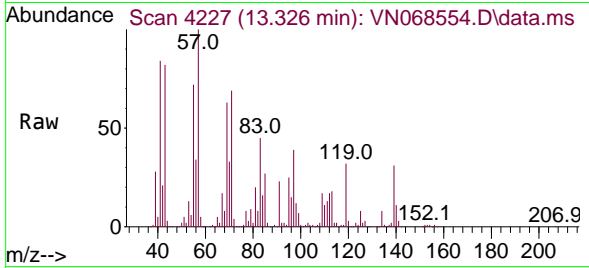


#83
 tert-Butylbenzene
 Concen: 4.998 ug/l
 RT: 13.326 min Scan# 4227
 Delta R.T. 0.000 min
 Lab File: VN068554.D
 Acq: 18 Sep 2021 6:53

Instrument :
 MSVOA_N
 ClientSampled :
 DUPLICATE-2

Tgt Ion:119 Resp: 152369

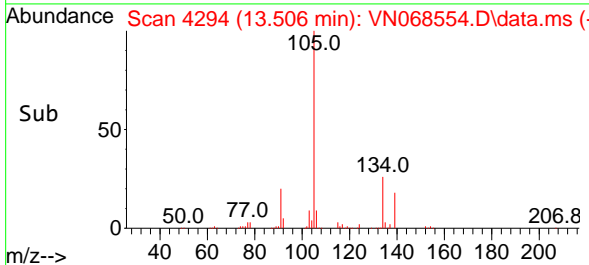
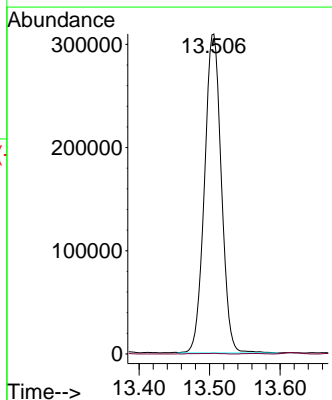
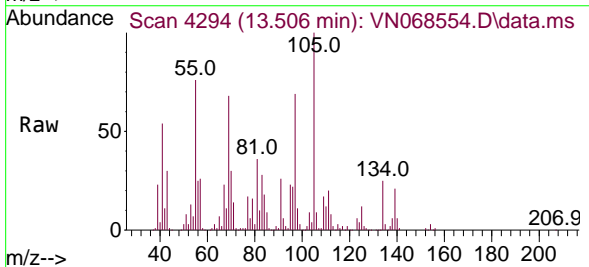
Ion	Ratio	Lower	Upper
119	100		
91	66.9	29.1	87.4
134	24.7	13.7	41.0

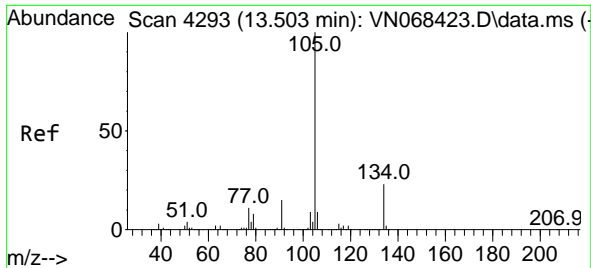


#84
 1,2,4-Trimethylbenzene
 Concen: 15.995 ug/l
 RT: 13.506 min Scan# 4294
 Delta R.T. 0.137 min
 Lab File: VN068554.D
 Acq: 18 Sep 2021 6:53

Tgt Ion:105 Resp: 512207

Ion	Ratio	Lower	Upper
105	100		
120	0.1	24.3	72.9#

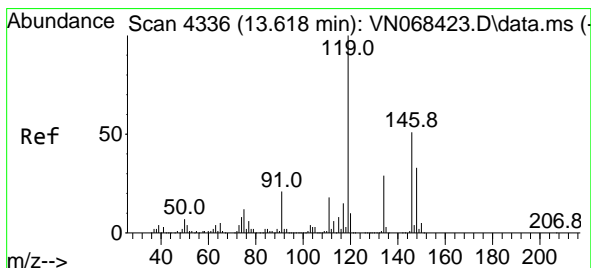
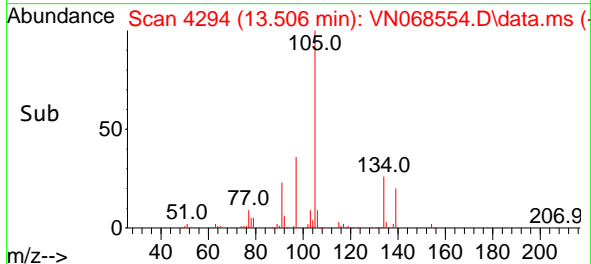
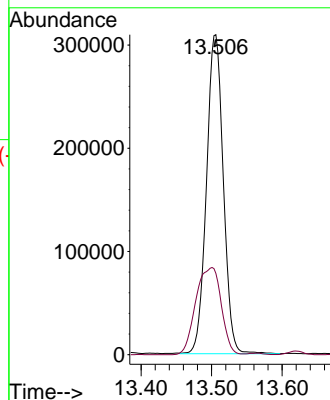
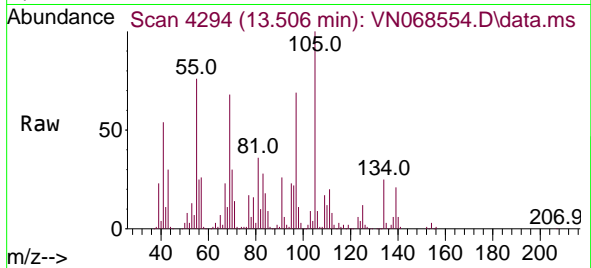




#85
 sec-Butylbenzene
 Concen: 12.742 ug/l
 RT: 13.506 min Scan# 4294
 Delta R.T. 0.003 min
 Lab File: VN068554.D
 Acq: 18 Sep 2021 6:53

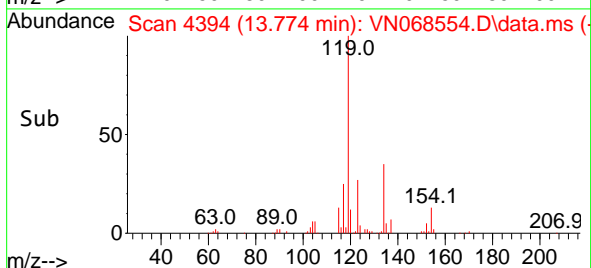
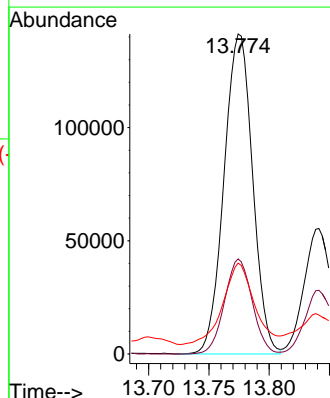
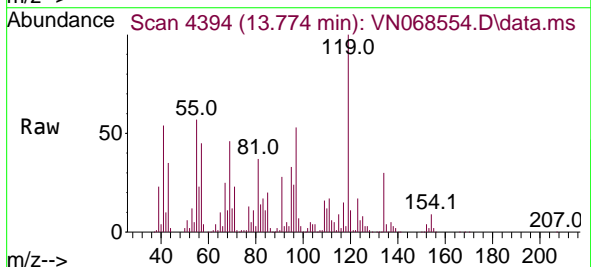
Instrument :
 MSVOA_N
 ClientSampled :
 DUPLICATE-2

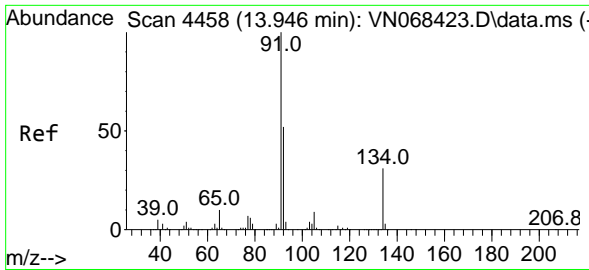
Tgt Ion:105 Resp: 512207
 Ion Ratio Lower Upper
 105 100
 134 41.3 11.4 34.1#



#86
 p-Isopropyltoluene
 Concen: 6.868 ug/l
 RT: 13.774 min Scan# 4394
 Delta R.T. 0.156 min
 Lab File: VN068554.D
 Acq: 18 Sep 2021 6:53

Tgt Ion:119 Resp: 233015
 Ion Ratio Lower Upper
 119 100
 134 28.8 14.1 42.4
 91 27.9 10.6 31.8



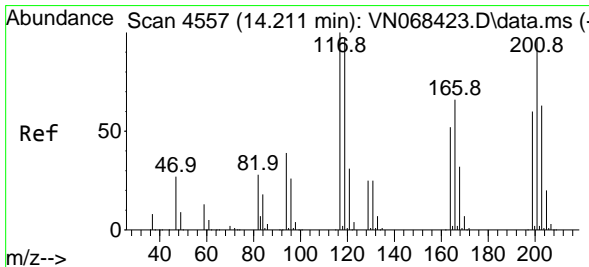
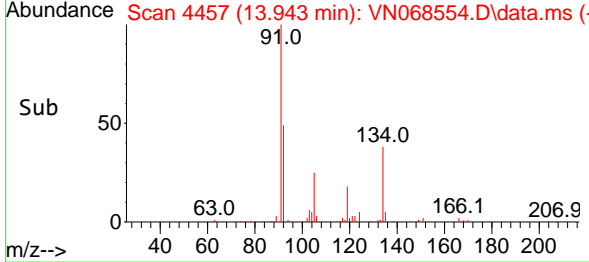
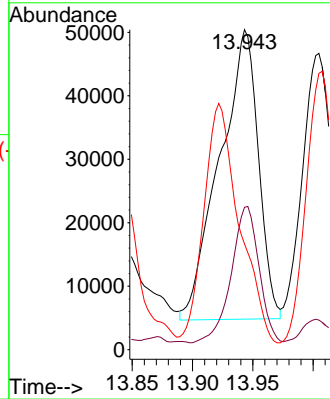
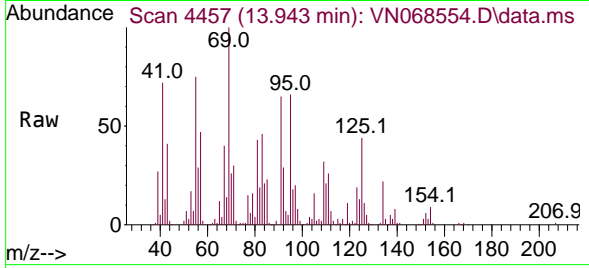


#89
 n-Butylbenzene
 Concen: 4.113 ug/l
 RT: 13.943 min Scan# 4457
 Delta R.T. -0.003 min
 Lab File: VN068554.D
 Acq: 18 Sep 2021 6:53

Instrument :
 MSVOA_N
 ClientSampled :
 DUPLICATE-2

Tgt Ion: 91 Resp: 101655

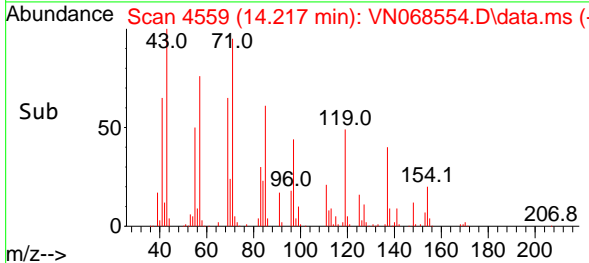
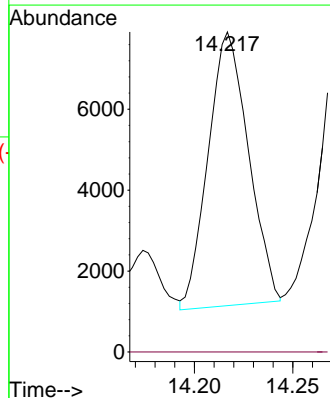
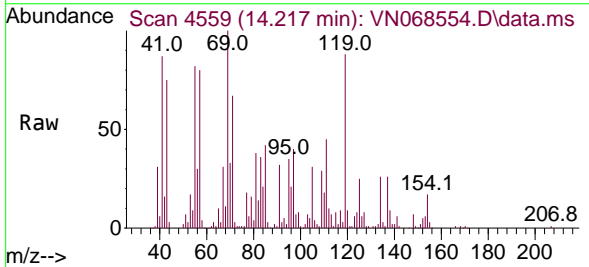
Ion	Ratio	Lower	Upper
91	100		
92	34.2	26.0	78.0
134	0.0	15.4	46.2#

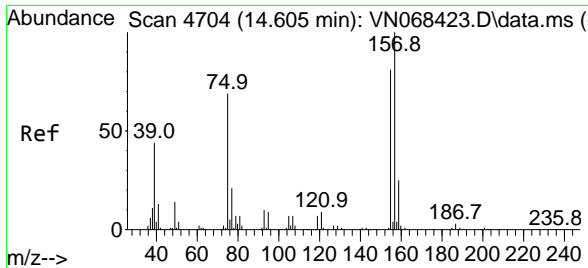


#90
 Hexachloroethane
 Concen: 1.619 ug/l
 RT: 14.217 min Scan# 4559
 Delta R.T. 0.006 min
 Lab File: VN068554.D
 Acq: 18 Sep 2021 6:53

Tgt Ion: 117 Resp: 9643

Ion	Ratio	Lower	Upper
117	100		
201	0.0	49.3	147.9#



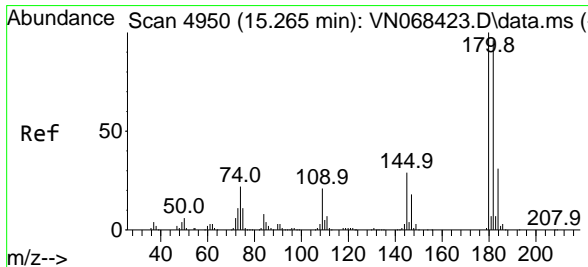
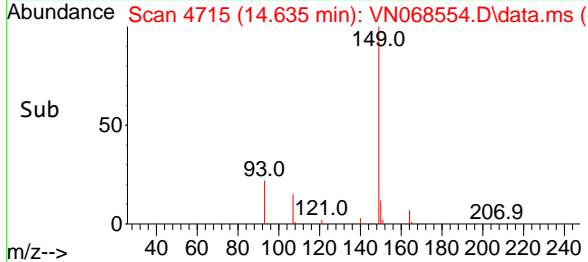
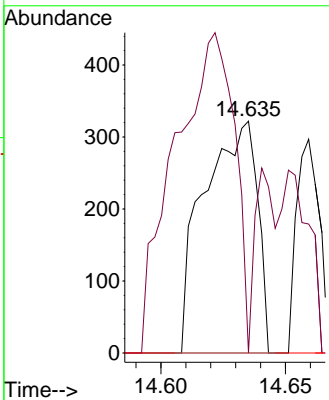
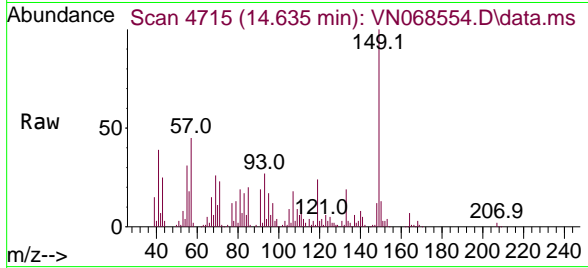


#92
 1,2-Dibromo-3-Chloropropane
 Concen: 0.262 ug/l
 RT: 14.635 min Scan# 4715
 Delta R.T. 0.030 min
 Lab File: VN068554.D
 Acq: 18 Sep 2021 6:53

Instrument :
 MSVOA_N
Client Sampled :
 DUPLICATE-2

Tgt Ion: 75 Resp: 479

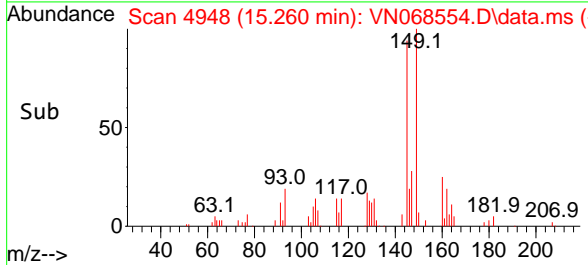
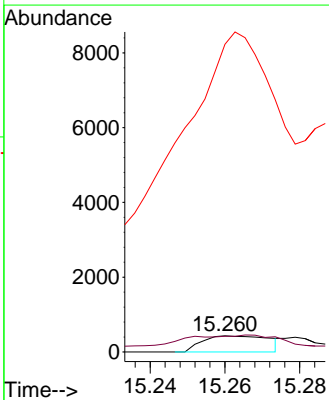
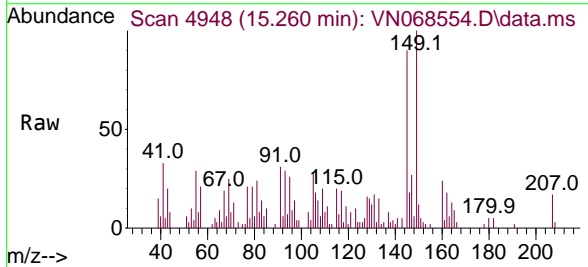
Ion	Ratio	Lower	Upper
75	100		
155	28.6	56.9	170.7#
157	0.0	73.0	219.2#

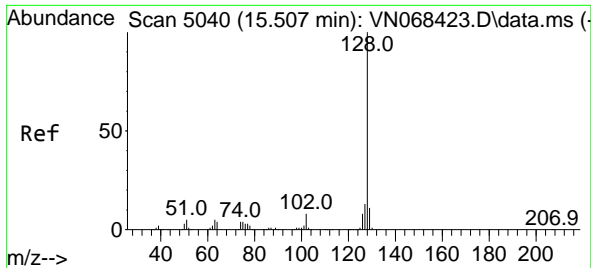


#93
 1,2,4-Trichlorobenzene
 Concen: 3.006 ug/l
 RT: 15.260 min Scan# 4948
 Delta R.T. -0.005 min
 Lab File: VN068554.D
 Acq: 18 Sep 2021 6:53

Tgt Ion: 180 Resp: 535

Ion	Ratio	Lower	Upper
180	100		
182	175.1	47.5	142.6#
145	2977.4	14.1	42.4#



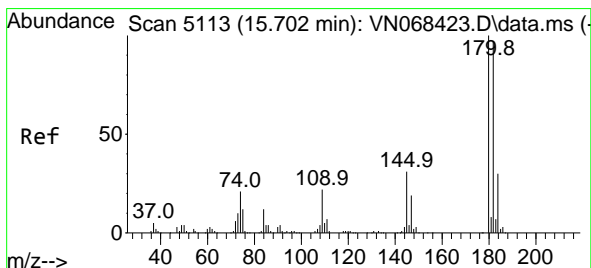
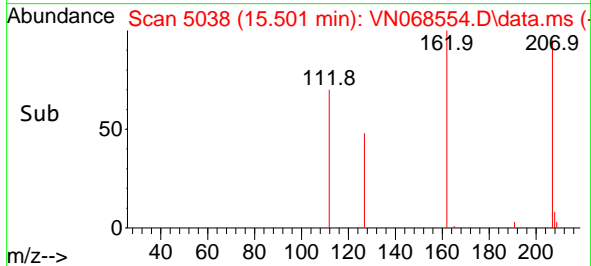
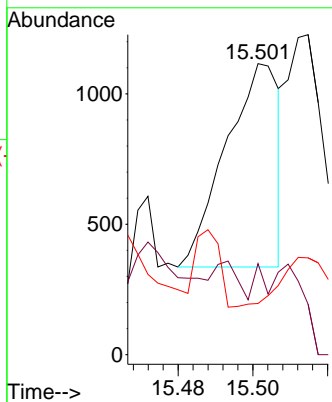
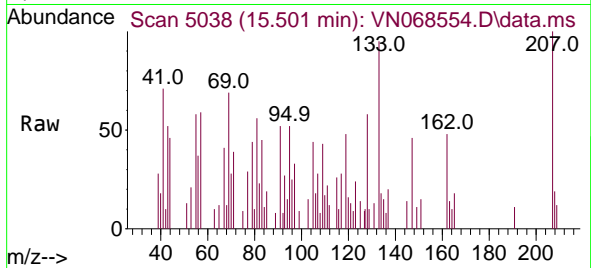


#95
 Naphthalene
 Concen: 3.528 ug/l
 RT: 15.501 min Scan# 5038
 Delta R.T. -0.006 min
 Lab File: VN068554.D
 Acq: 18 Sep 2021 6:53

Instrument :
 MSVOA_N
 ClientSampled :
 DUPLICATE-2

Tgt Ion:128 Resp: 768

Ion	Ratio	Lower	Upper
128	100		
127	0.0	10.6	15.8#
129	26.2	8.6	13.0#



#96
 1,2,3-Trichlorobenzene
 Concen: 2.991 ug/l
 RT: 15.697 min Scan# 5111
 Delta R.T. -0.005 min
 Lab File: VN068554.D
 Acq: 18 Sep 2021 6:53

Tgt Ion:180 Resp: 187

Ion	Ratio	Lower	Upper
180	100		
182	202.1	47.9	143.6#
145	0.0	15.2	45.5#

