

Data Path : Z:\voasrv\HPCHEM1\MSVOA_N\Data\VN091724\
 Data File : VN083938.D
 Acq On : 17 Sep 2024 12:18
 Operator : JC\MD
 Sample : P3970-01
 Misc : 5.0mL/MSVOA_N/WATER
 ALS Vial : 10 Sample Multiplier: 1

Instrument :
 MSVOA_N
 ClientSampleId :
 BP-TB-20240910

Quant Time: Sep 18 01:46:01 2024
 Quant Method : Z:\voasrv\HPCHEM1\MSVOA_N\methods\82N091024W.M
 Quant Title : SW846 8260
 QLast Update : Wed Sep 11 15:18:56 2024
 Response via : Initial Calibration

Compound	R.T.	QIon	Response	Conc Units	Dev(Min)

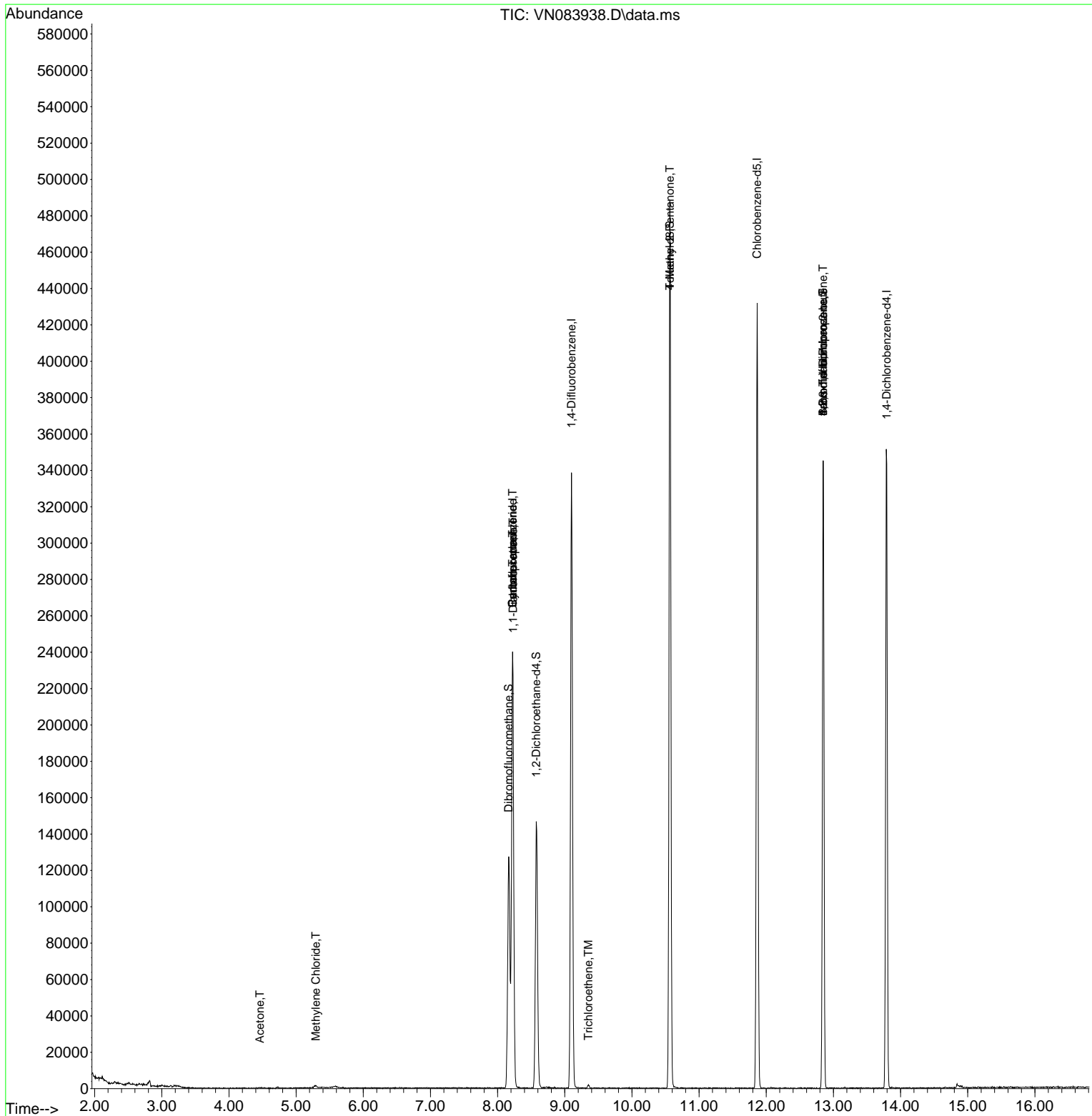
Internal Standards					
1) Pentafluorobenzene	8.224	168	158471	50.000 ug/l	0.00
34) 1,4-Difluorobenzene	9.100	114	270810	50.000 ug/l	0.00
63) Chlorobenzene-d5	11.865	117	227497	50.000 ug/l	0.00
72) 1,4-Dichlorobenzene-d4	13.794	152	90002	50.000 ug/l	0.00
System Monitoring Compounds					
33) 1,2-Dichloroethane-d4	8.577	65	124055	51.916 ug/l	0.00
Spiked Amount	50.000	Range 74 - 125	Recovery	= 103.840%	
35) Dibromofluoromethane	8.165	113	89285	51.500 ug/l	0.00
Spiked Amount	50.000	Range 75 - 124	Recovery	= 103.000%	
50) Toluene-d8	10.565	98	323975	54.055 ug/l	0.00
Spiked Amount	50.000	Range 86 - 113	Recovery	= 108.100%	
62) 4-Bromofluorobenzene	12.847	95	112640	45.552 ug/l	0.00
Spiked Amount	50.000	Range 77 - 121	Recovery	= 91.100%	
Target Compounds					
					Qvalue
3) Chloromethane	2.365	50	497	Below Cal	96
16) Acetone	4.459	43	548	0.572 ug/l #	45
20) Methylene Chloride	5.294	84	913	0.466 ug/l #	65
31) Cyclohexane	8.224	56	4335	1.255 ug/l #	22
36) 1,1-Dichloropropene	8.230	75	15046	5.766 ug/l #	50
38) Carbon Tetrachloride	8.224	117	19410	6.557 ug/l #	16
44) Trichloroethene	9.353	130	710	0.390 ug/l	99
51) 4-Methyl-2-Pentanone	10.565	43	1598	0.684 ug/l #	1
71) Bromoform	12.847	173	793	0.671 ug/l #	1
76) 1,2,3-Trichloropropane	12.847	75	63945	35.211 ug/l #	1
81) trans-1,4-Dichloro-2-b...	12.847	75	63945	92.220 ug/l #	9

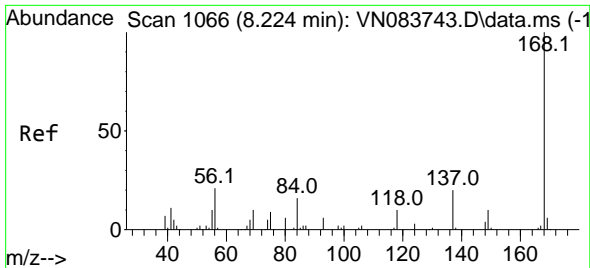
(#) = qualifier out of range (m) = manual integration (+) = signals summed

Data Path : Z:\voasrv\HPCHEM1\MSVOA_N\Data\VN091724\
Data File : VN083938.D
Acq On : 17 Sep 2024 12:18
Operator : JC\MD
Sample : P3970-01
Misc : 5.0mL/MSVOA_N/WATER
ALS Vial : 10 Sample Multiplier: 1

Instrument :
MSVOA_N
ClientSampleId :
BP-TB-20240910

Quant Time: Sep 18 01:46:01 2024
Quant Method : Z:\voasrv\HPCHEM1\MSVOA_N\methods\82N091024W.M
Quant Title : SW846 8260
QLast Update : Wed Sep 11 15:18:56 2024
Response via : Initial Calibration

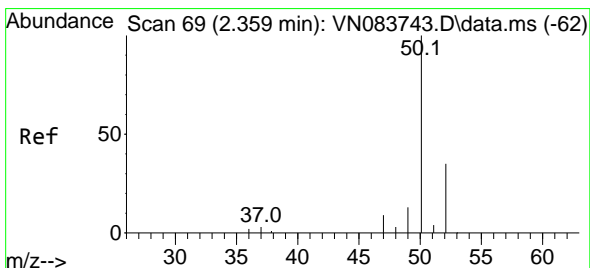
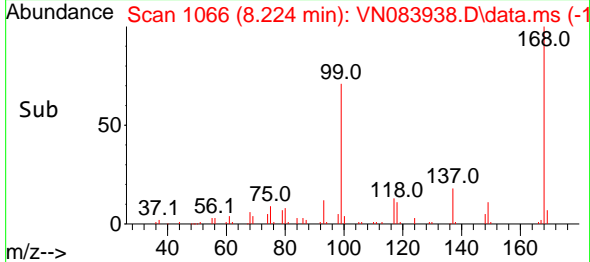
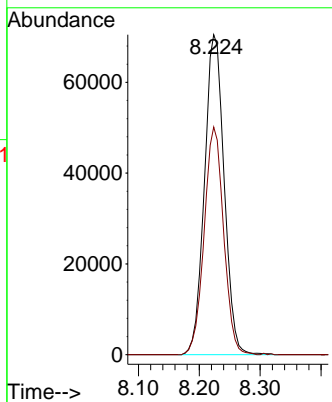
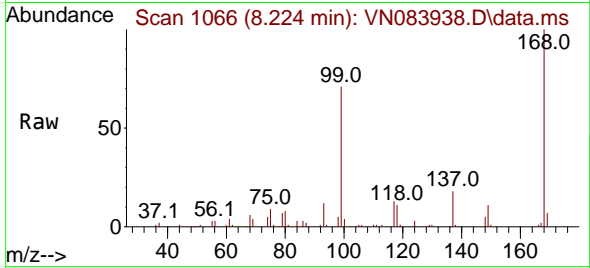




#1
 Pentafluorobenzene
 Concen: 50.000 ug/l
 RT: 8.224 min Scan# 10
 Delta R.T. -0.000 min
 Lab File: VN083938.D
 Acq: 17 Sep 2024 12:18

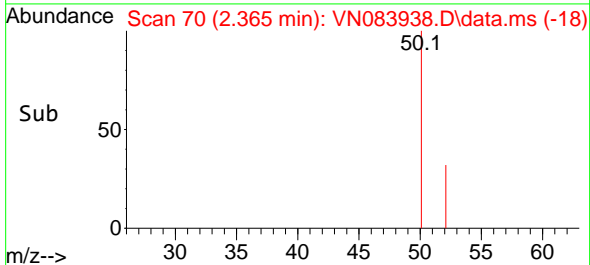
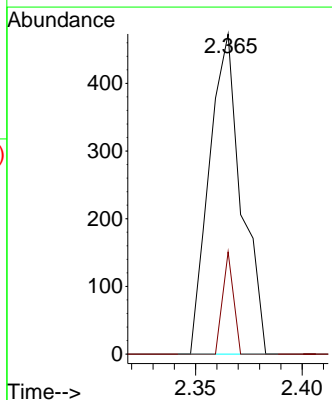
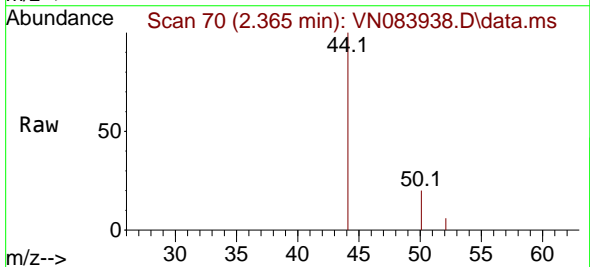
Instrument :
 MSVOA_N
 ClientSampleId :
 BP-TB-20240910

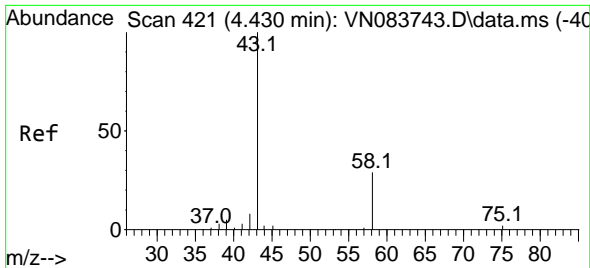
Tgt Ion:168 Resp: 158471
 Ion Ratio Lower Upper
 168 100
 99 71.2 54.2 81.2



#3
 Chloromethane
 Concen: Below Cal
 RT: 2.365 min Scan# 70
 Delta R.T. 0.006 min
 Lab File: VN083938.D
 Acq: 17 Sep 2024 12:18

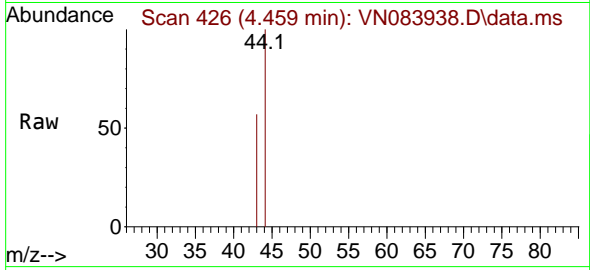
Tgt Ion: 50 Resp: 497
 Ion Ratio Lower Upper
 50 100
 52 31.9 27.2 40.8



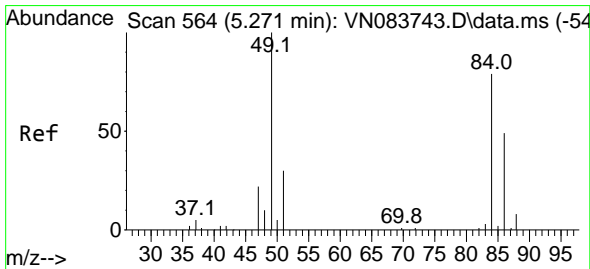
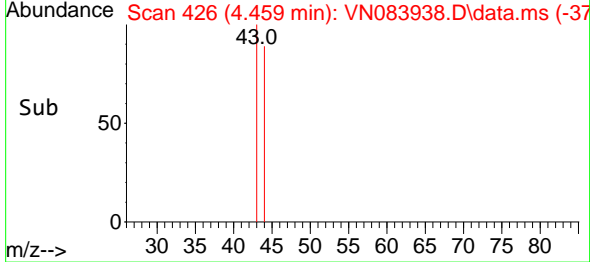
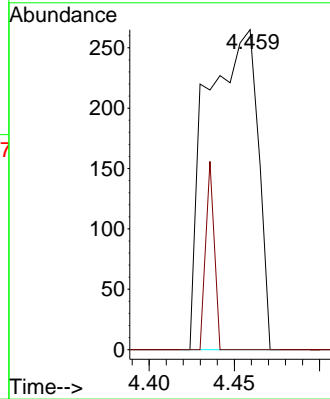


#16
 Acetone
 Concen: 0.572 ug/l
 RT: 4.459 min Scan# 41
 Delta R.T. 0.029 min
 Lab File: VN083938.D
 Acq: 17 Sep 2024 12:18

Instrument : MSVOA_N
 ClientSampleId : BP-TB-20240910

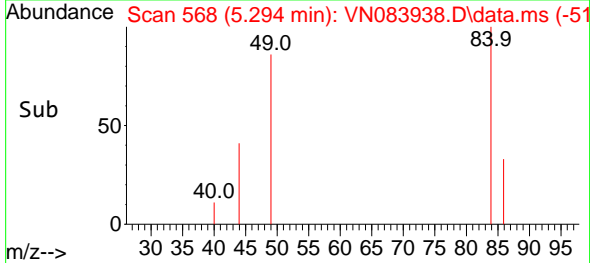
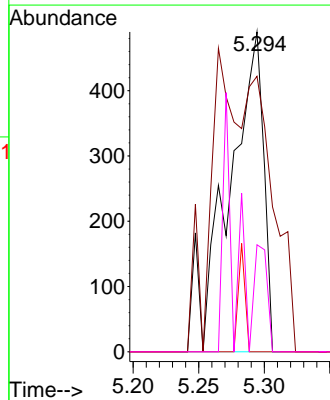
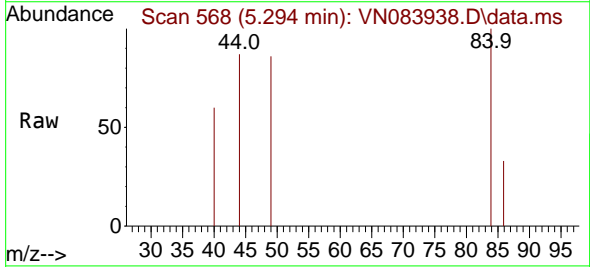


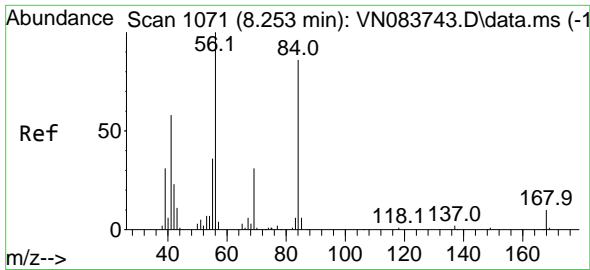
Tgt Ion: 43 Resp: 548
 Ion Ratio Lower Upper
 43 100
 58 0.0 23.7 35.5#



#20
 Methylene Chloride
 Concen: 0.466 ug/l
 RT: 5.294 min Scan# 568
 Delta R.T. 0.023 min
 Lab File: VN083938.D
 Acq: 17 Sep 2024 12:18

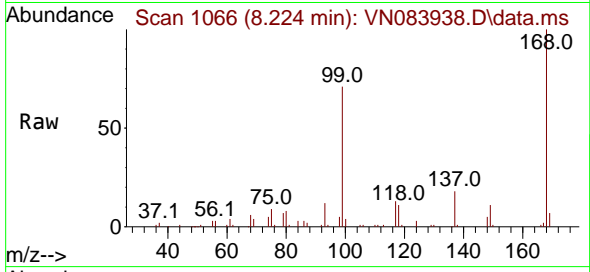
Tgt Ion: 84 Resp: 913
 Ion Ratio Lower Upper
 84 100
 49 86.1 93.4 140.0#
 51 0.0 29.2 43.8#
 86 33.5 46.9 70.3#





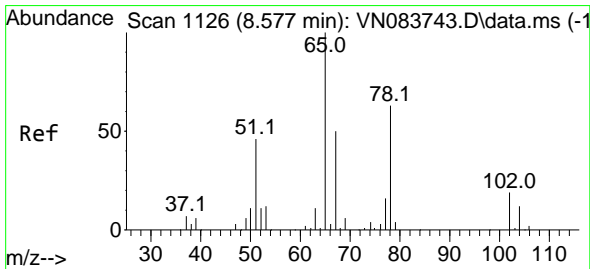
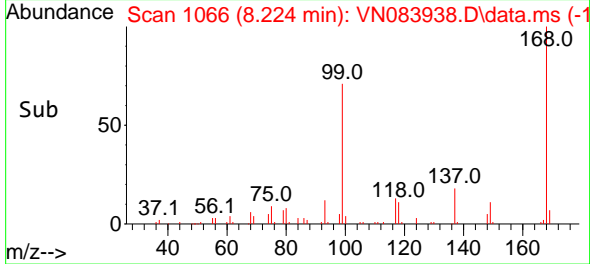
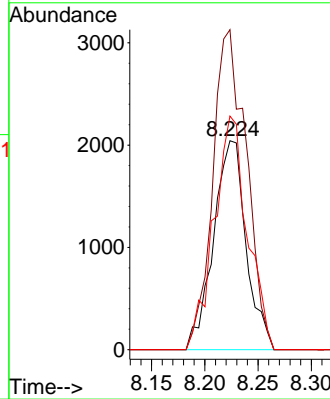
#31
 Cyclohexane
 Concen: 1.255 ug/l
 RT: 8.224 min Scan# 1066
 Delta R.T. -0.029 min
 Lab File: VN083938.D
 Acq: 17 Sep 2024 12:18

Instrument : MSVOA_N
 ClientSampleId : BP-TB-20240910



Tgt Ion: 56 Resp: 4335

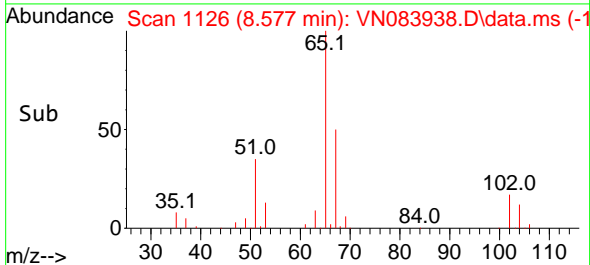
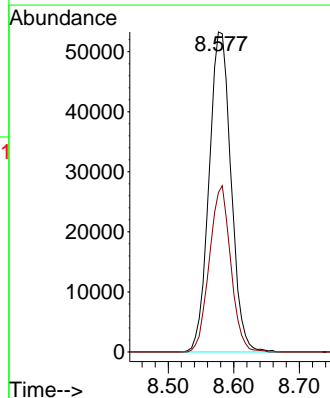
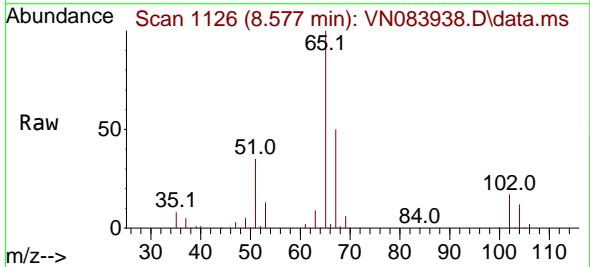
Ion	Ratio	Lower	Upper
56	100		
69	153.2	26.9	40.3#
84	111.8	69.2	103.8#

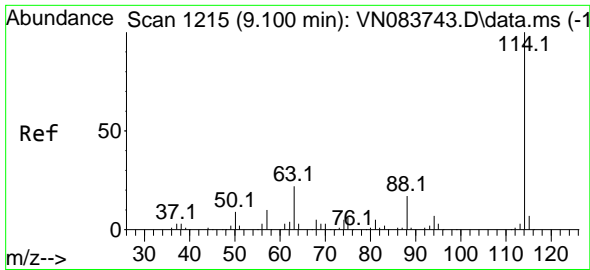


#33
 1,2-Dichloroethane-d4
 Concen: 51.916 ug/l
 RT: 8.577 min Scan# 1126
 Delta R.T. -0.000 min
 Lab File: VN083938.D
 Acq: 17 Sep 2024 12:18

Tgt Ion: 65 Resp: 124055

Ion	Ratio	Lower	Upper
65	100		
67	50.4	0.0	100.8



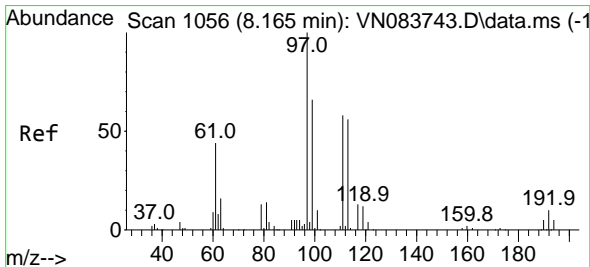
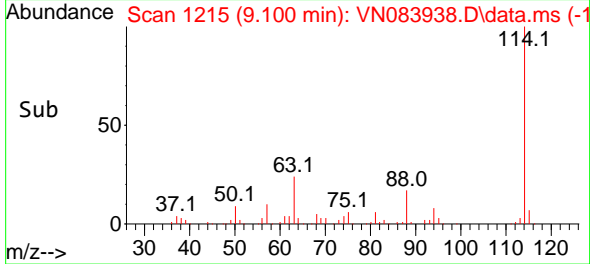
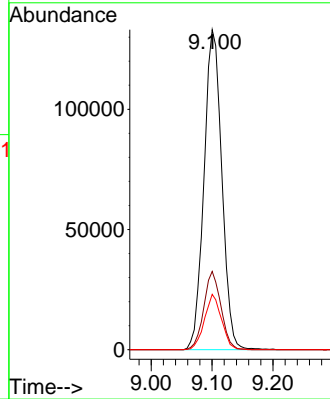
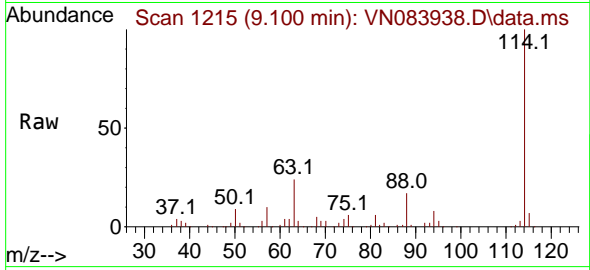


#34
 1,4-Difluorobenzene
 Concen: 50.000 ug/l
 RT: 9.100 min Scan# 11
 Delta R.T. -0.000 min
 Lab File: VN083938.D
 Acq: 17 Sep 2024 12:18

Instrument :
 MSVOA_N
 ClientSampleId :
 BP-TB-20240910

Tgt Ion:114 Resp: 270810

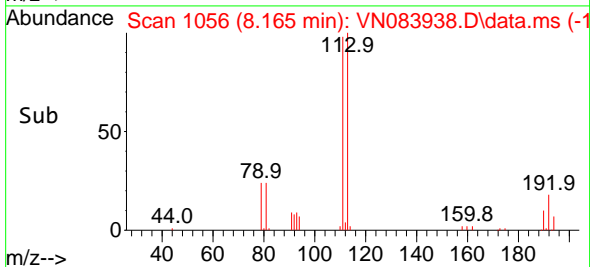
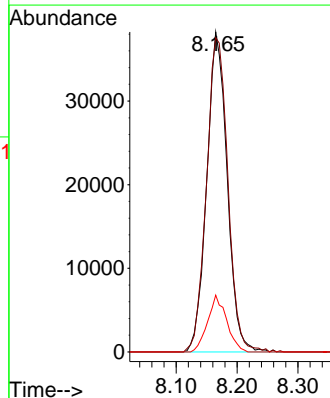
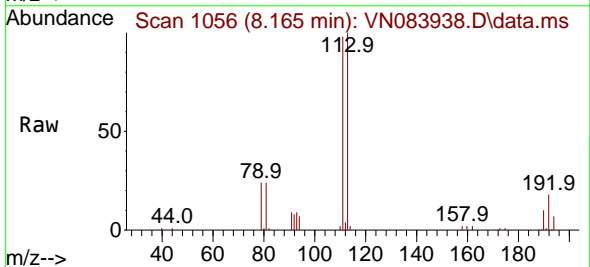
Ion	Ratio	Lower	Upper
114	100		
63	24.5	0.0	43.4
88	17.3	0.0	32.6

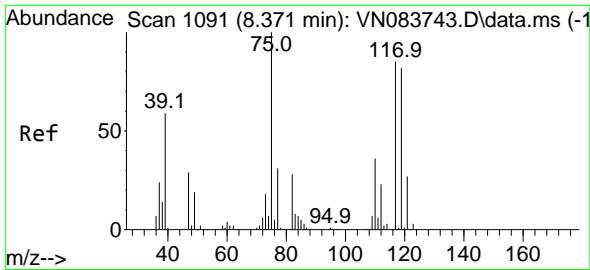


#35
 Dibromofluoromethane
 Concen: 51.500 ug/l
 RT: 8.165 min Scan# 1056
 Delta R.T. -0.000 min
 Lab File: VN083938.D
 Acq: 17 Sep 2024 12:18

Tgt Ion:113 Resp: 89285

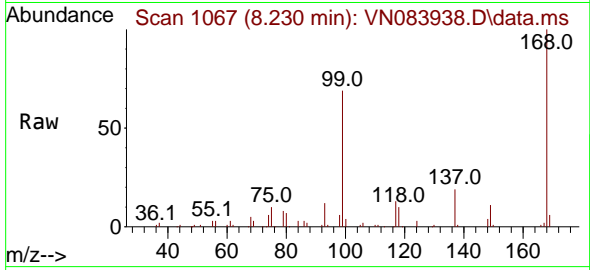
Ion	Ratio	Lower	Upper
113	100		
111	102.9	82.6	124.0
192	16.5	14.3	21.5



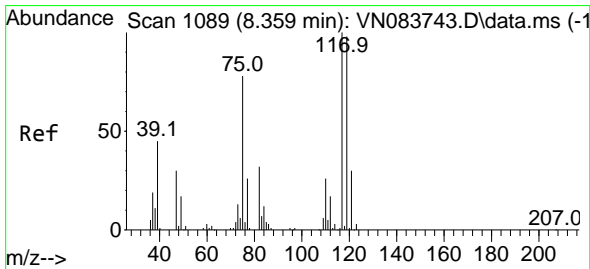
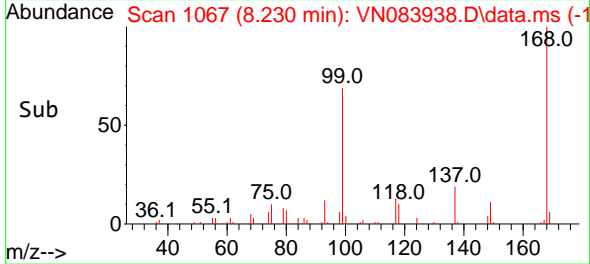
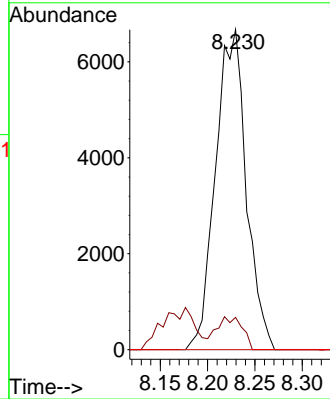


#36
 1,1-Dichloropropene
 Concen: 5.766 ug/l
 RT: 8.230 min Scan# 1067
 Delta R.T. -0.141 min
 Lab File: VN083938.D
 Acq: 17 Sep 2024 12:18

Instrument : MSVOA_N
 ClientSampleId : BP-TB-20240910

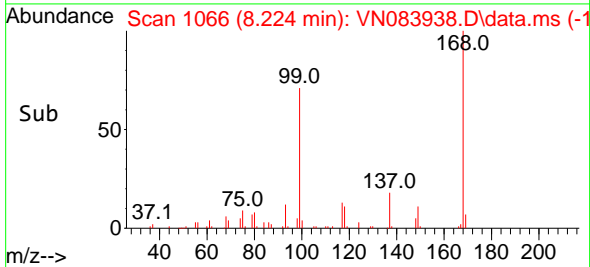
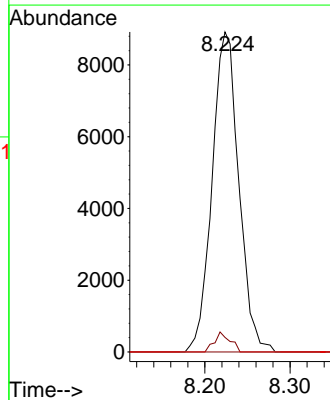
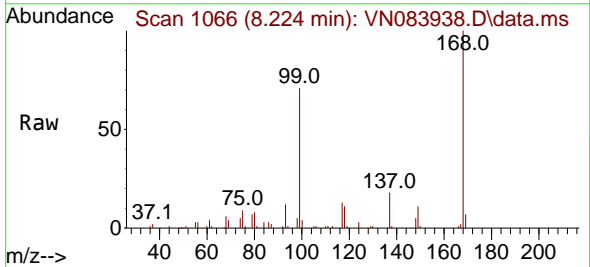


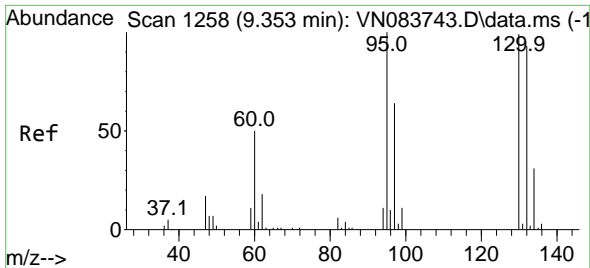
Tgt Ion: 75 Resp: 15046
 Ion Ratio Lower Upper
 75 100
 110 8.5 16.7 50.1#
 77 0.0 25.2 37.8#



#38
 Carbon Tetrachloride
 Concen: 6.557 ug/l
 RT: 8.224 min Scan# 1066
 Delta R.T. -0.135 min
 Lab File: VN083938.D
 Acq: 17 Sep 2024 12:18

Tgt Ion: 117 Resp: 19410
 Ion Ratio Lower Upper
 117 100
 119 4.5 76.1 114.1#
 121 0.0 24.1 36.1#

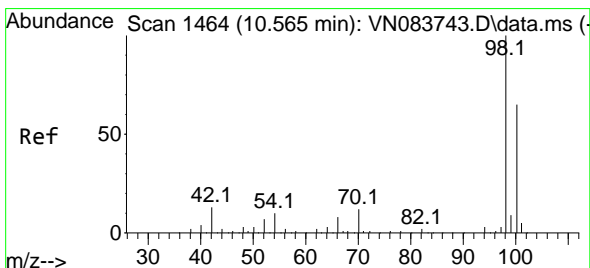
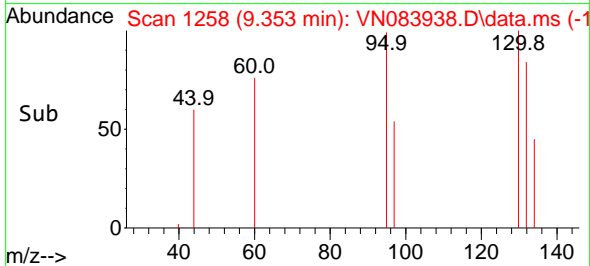
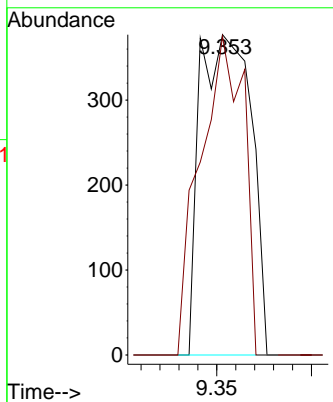
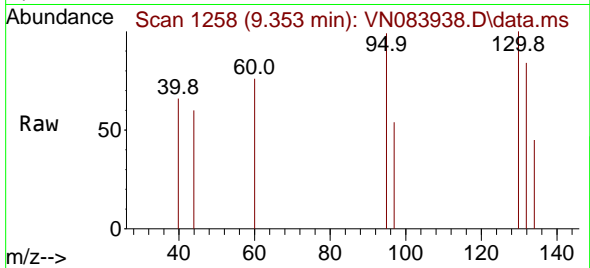




#44
 Trichloroethene
 Concen: 0.390 ug/l
 RT: 9.353 min Scan# 11
 Delta R.T. -0.000 min
 Lab File: VN083938.D
 Acq: 17 Sep 2024 12:18

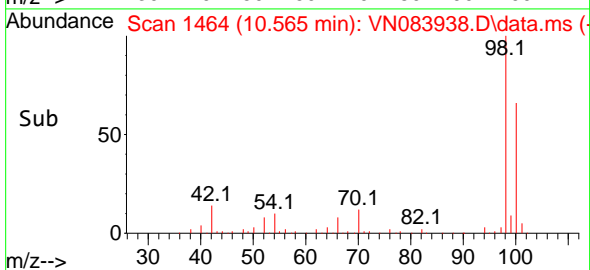
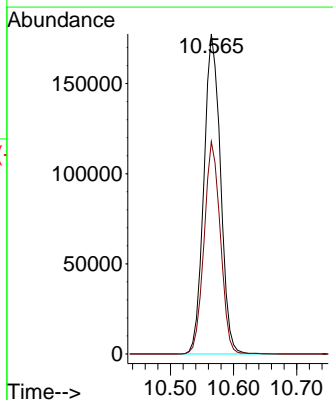
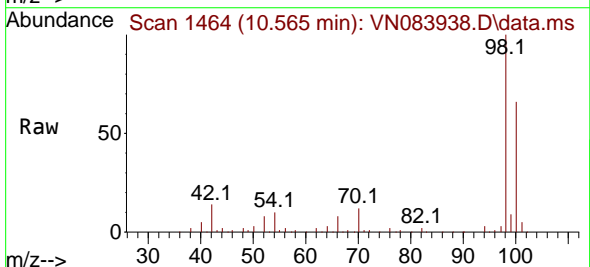
Instrument :
 MSVOA_N
 ClientSampleId :
 BP-TB-20240910

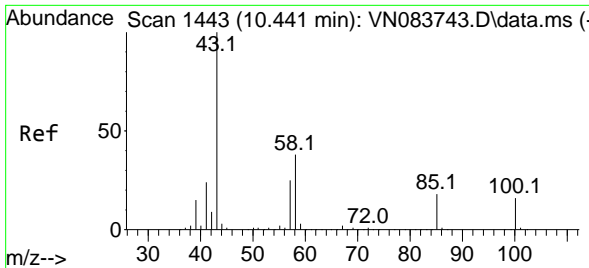
Tgt Ion:130 Resp: 710
 Ion Ratio Lower Upper
 130 100
 95 99.5 0.0 200.4



#50
 Toluene-d8
 Concen: 54.055 ug/l
 RT: 10.565 min Scan# 1464
 Delta R.T. -0.000 min
 Lab File: VN083938.D
 Acq: 17 Sep 2024 12:18

Tgt Ion: 98 Resp: 323975
 Ion Ratio Lower Upper
 98 100
 100 65.0 52.0 78.0

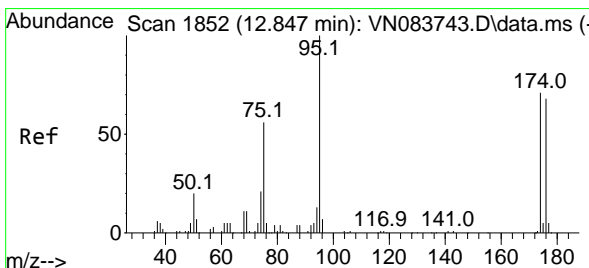
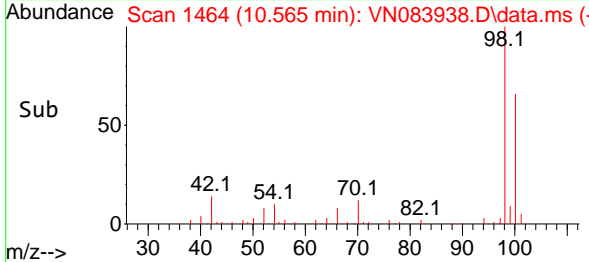
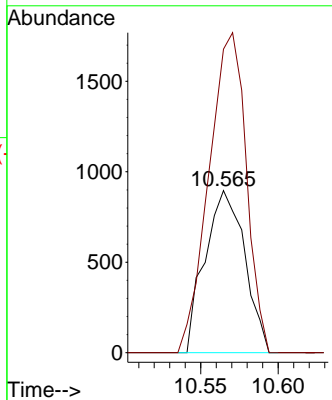
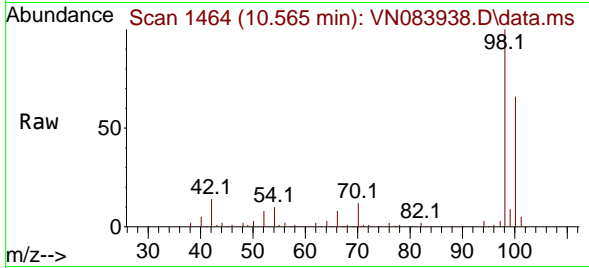




#51
 4-Methyl-2-Pentanone
 Concen: 0.684 ug/l
 RT: 10.565 min Scan# 1464
 Delta R.T. 0.123 min
 Lab File: VN083938.D
 Acq: 17 Sep 2024 12:18

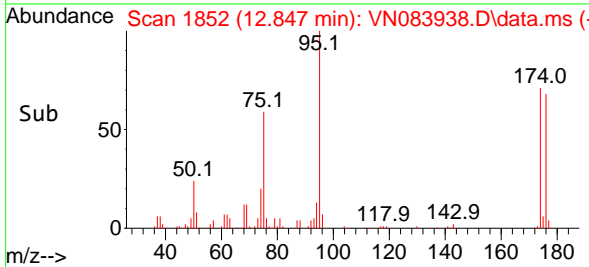
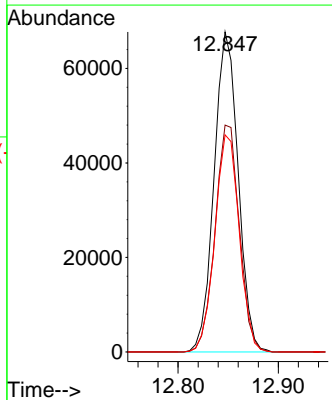
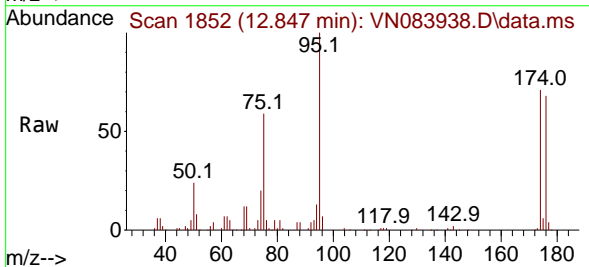
Instrument : MSVOA_N
 ClientSampleId : BP-TB-20240910

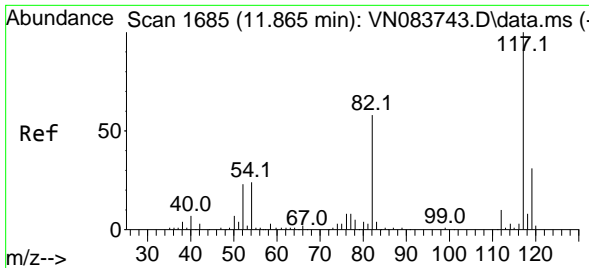
Tgt Ion: 43 Resp: 1598
 Ion Ratio Lower Upper
 43 100
 58 185.3 31.6 47.4#



#62
 4-Bromofluorobenzene
 Concen: 45.552 ug/l
 RT: 12.847 min Scan# 1852
 Delta R.T. -0.000 min
 Lab File: VN083938.D
 Acq: 17 Sep 2024 12:18

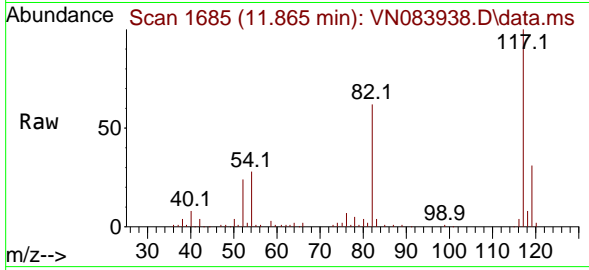
Tgt Ion: 95 Resp: 112640
 Ion Ratio Lower Upper
 95 100
 174 71.6 0.0 139.8
 176 68.7 0.0 131.4





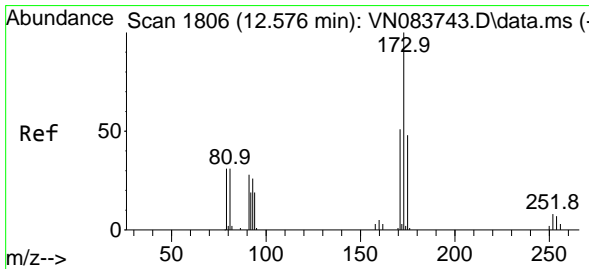
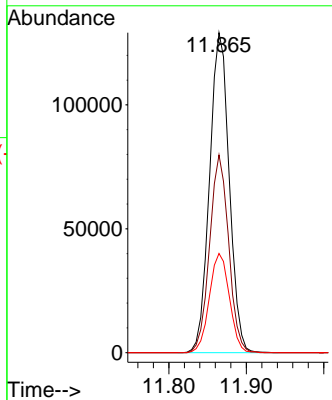
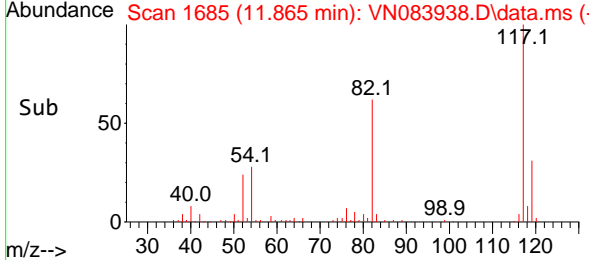
#63
 Chlorobenzene-d5
 Concen: 50.000 ug/l
 RT: 11.865 min Scan# 117
 Delta R.T. -0.000 min
 Lab File: VN083938.D
 Acq: 17 Sep 2024 12:18

Instrument : MSVOA_N
 ClientSampleId : BP-TB-20240910

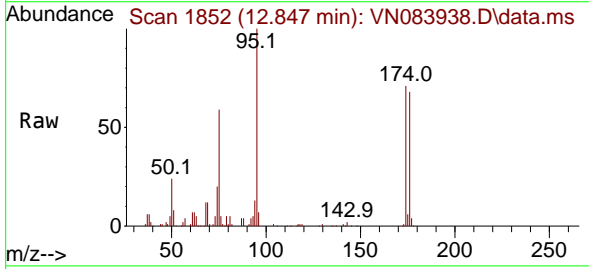


Tgt Ion:117 Resp: 227497

Ion	Ratio	Lower	Upper
117	100		
82	61.8	47.4	71.0
119	31.0	26.3	39.5

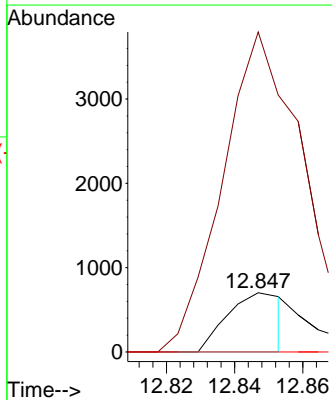
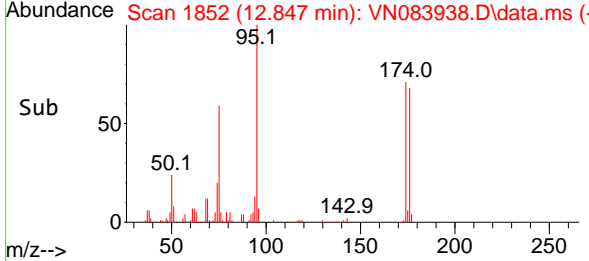


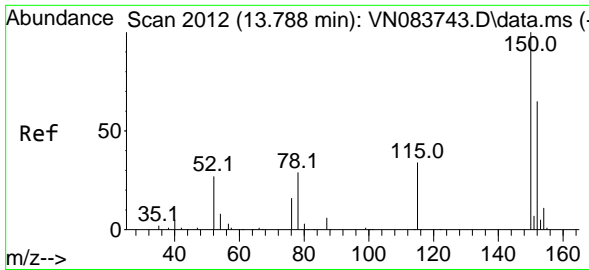
#71
 Bromoform
 Concen: 0.671 ug/l
 RT: 12.847 min Scan# 1852
 Delta R.T. 0.270 min
 Lab File: VN083938.D
 Acq: 17 Sep 2024 12:18



Tgt Ion:173 Resp: 793

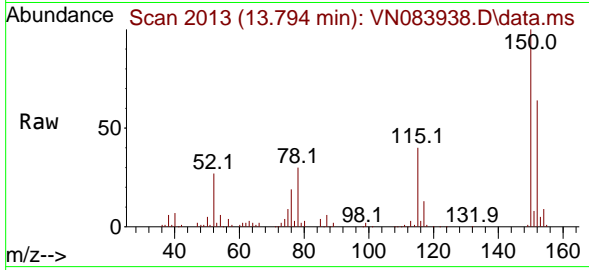
Ion	Ratio	Lower	Upper
173	100		
175	565.8	24.1	72.2#
254	0.0	0.0	0.0



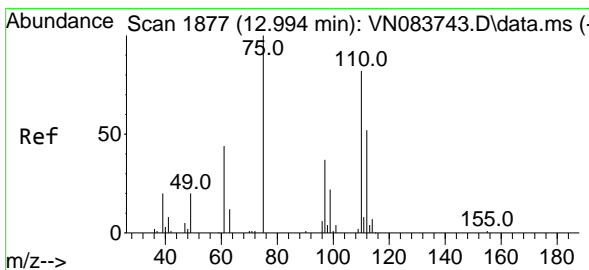
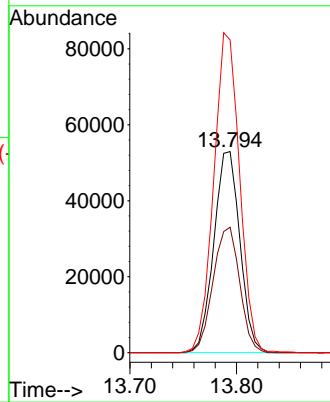
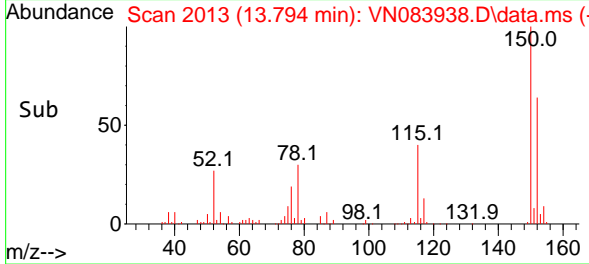


#72
 1,4-Dichlorobenzene-d4
 Concen: 50.000 ug/l
 RT: 13.794 min Scan# 20
 Delta R.T. 0.006 min
 Lab File: VN083938.D
 Acq: 17 Sep 2024 12:18

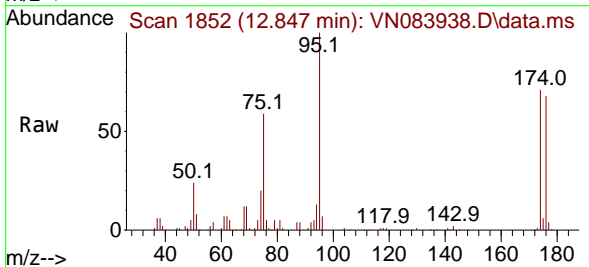
Instrument :
 MSVOA_N
 ClientSampleId :
 BP-TB-20240910



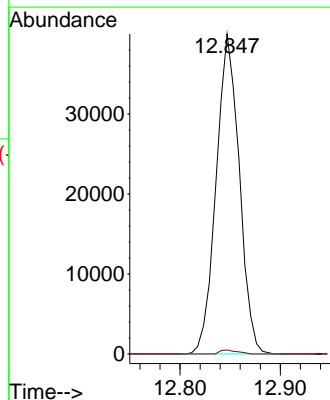
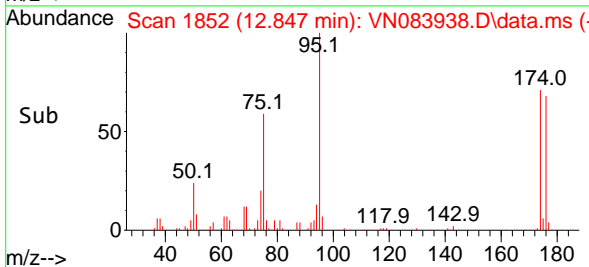
Tgt Ion:152 Resp: 90002
 Ion Ratio Lower Upper
 152 100
 115 63.7 32.2 96.6
 150 157.7 0.0 348.6

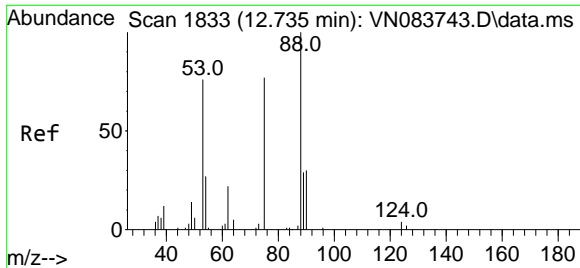


#76
 1,2,3-Trichloropropane
 Concen: 35.211 ug/l
 RT: 12.847 min Scan# 1852
 Delta R.T. -0.147 min
 Lab File: VN083938.D
 Acq: 17 Sep 2024 12:18



Tgt Ion: 75 Resp: 63945
 Ion Ratio Lower Upper
 75 100
 77 0.9 95.2 285.6#





#81
 trans-1,4-Dichloro-2-butene
 Concen: 92.220 ug/l
 RT: 12.847 min Scan# 11
 Delta R.T. 0.112 min
 Lab File: VN083938.D
 Acq: 17 Sep 2024 12:18

Instrument : MSVOA_N
 ClientSampleId : BP-TB-20240910

Tgt Ion: 75 Resp: 63945

Ion	Ratio	Lower	Upper
75	100		
53	0.0	81.2	121.8#
89	0.0	35.7	53.5#

