

Data Path : Z:\voasrv\HPCHEM1\MSVOA_N\Data\VN091724\
 Data File : VN083941.D
 Acq On : 17 Sep 2024 13:30
 Operator : JC\MD
 Sample : P3957-02
 Misc : 5.0mL/MSVOA_N/WATER
 ALS Vial : 13 Sample Multiplier: 1

Instrument :
 MSVOA_N
 ClientSampleId :
 MW202D1-20240909

Quant Time: Sep 18 01:47:52 2024
 Quant Method : Z:\voasrv\HPCHEM1\MSVOA_N\methods\82N091024W.M
 Quant Title : SW846 8260
 QLast Update : Wed Sep 11 15:18:56 2024
 Response via : Initial Calibration

Compound	R.T.	QIon	Response	Conc	Units	Dev(Min)

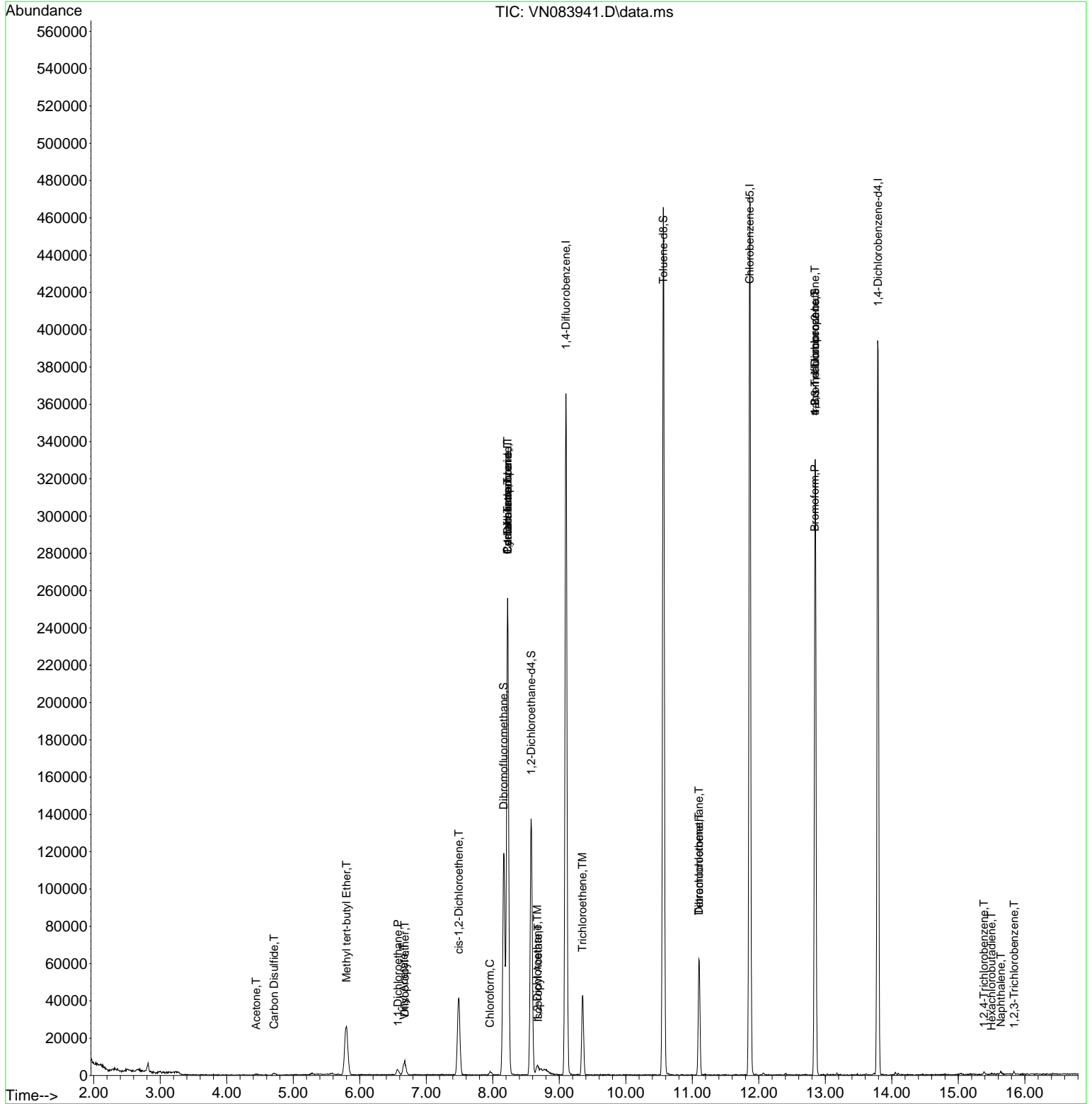
Internal Standards						
1) Pentafluorobenzene	8.224	168	173353	50.000	ug/l	0.00
34) 1,4-Difluorobenzene	9.100	114	300128	50.000	ug/l	0.00
63) Chlorobenzene-d5	11.865	117	251668	50.000	ug/l	0.00
72) 1,4-Dichlorobenzene-d4	13.794	152	102172	50.000	ug/l	0.00
System Monitoring Compounds						
33) 1,2-Dichloroethane-d4	8.577	65	117712	45.033	ug/l	0.00
Spiked Amount	50.000	Range 74 - 125	Recovery	=	90.060%	
35) Dibromofluoromethane	8.165	113	83452	43.433	ug/l	0.00
Spiked Amount	50.000	Range 75 - 124	Recovery	=	86.860%	
50) Toluene-d8	10.565	98	306667	46.169	ug/l	0.00
Spiked Amount	50.000	Range 86 - 113	Recovery	=	92.340%	
62) 4-Bromofluorobenzene	12.847	95	112828	41.171	ug/l	0.00
Spiked Amount	50.000	Range 77 - 121	Recovery	=	82.340%	
Target Compounds						
						Qvalue
3) Chloromethane	2.365	50	609	Below Cal	#	58
16) Acetone	4.442	43	890	0.849	ug/l #	45
17) Carbon Disulfide	4.712	76	1055	0.201	ug/l #	75
18) Methyl Acetate	5.024	43	75	Below Cal	#	52
19) Methyl tert-butyl Ether	5.800	73	42071	6.201	ug/l	95
22) Diisopropyl ether	6.677	45	8588	1.249	ug/l #	94
23) Vinyl Acetate	6.665	43	2609	0.518	ug/l #	71
24) 1,1-Dichloroethane	6.577	63	5257	1.327	ug/l #	82
27) cis-1,2-Dichloroethene	7.488	96	24554	10.294	ug/l	90
30) Chloroform	7.959	83	2038	0.484	ug/l	84
31) Cyclohexane	8.224	56	4801	1.271	ug/l #	1
36) 1,1-Dichloropropene	8.224	75	17162	5.934	ug/l #	51
38) Carbon Tetrachloride	8.224	117	20343	6.200	ug/l #	17
42) 1,2-Dichloroethane	8.671	62	1987	0.611	ug/l #	77
43) Isopropyl Acetate	8.682	43	5031	1.058	ug/l #	57
44) Trichloroethene	9.347	130	14581	7.234	ug/l	90
60) Dibromochloromethane	11.100	129	13482	6.061	ug/l #	10
64) Tetrachloroethene	11.100	164	13672	8.169	ug/l	95
71) Bromoform	12.841	173	807	0.618	ug/l #	29
76) 1,2,3-Trichloropropane	12.847	75	63561	30.831	ug/l #	1
81) trans-1,4-Dichloro-2-b...	12.847	75	63561	80.747	ug/l #	9
93) 1,2,4-Trichlorobenzene	15.388	180	734	0.395	ug/l #	16
94) Hexachlorobutadiene	15.500	225	162	0.205	ug/l	72
95) Naphthalene	15.641	128	2271	0.401	ug/l #	78
96) 1,2,3-Trichlorobenzene	15.841	180	616	0.347	ug/l	90

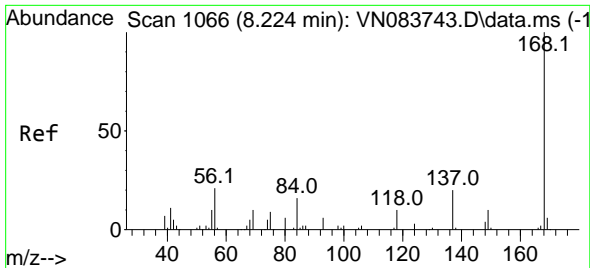
(#) = qualifier out of range (m) = manual integration (+) = signals summed

Data Path : Z:\voasrv\HPCHEM1\MSVOA_N\Data\VN091724\
 Data File : VN083941.D
 Acq On : 17 Sep 2024 13:30
 Operator : JC\MD
 Sample : P3957-02
 Misc : 5.0mL/MSVOA_N/WATER
 ALS Vial : 13 Sample Multiplier: 1

Instrument :
 MSVOA_N
 ClientSampleId :
 MW202D1-20240909

Quant Time: Sep 18 01:47:52 2024
 Quant Method : Z:\voasrv\HPCHEM1\MSVOA_N\methods\82N091024W.M
 Quant Title : SW846 8260
 QLast Update : Wed Sep 11 15:18:56 2024
 Response via : Initial Calibration

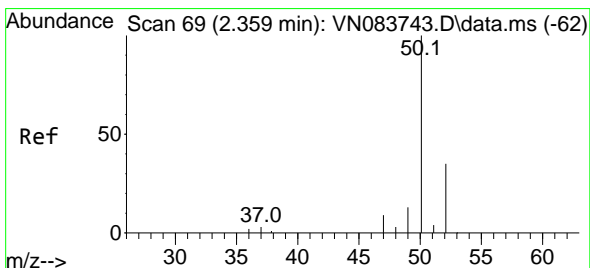
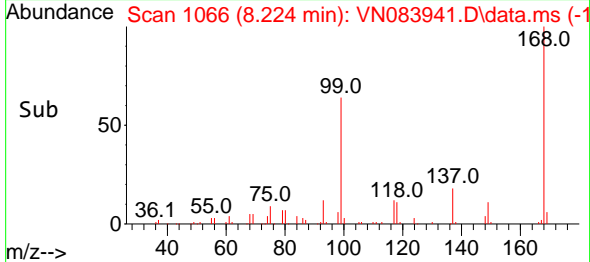
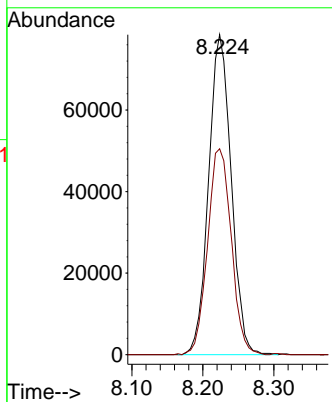
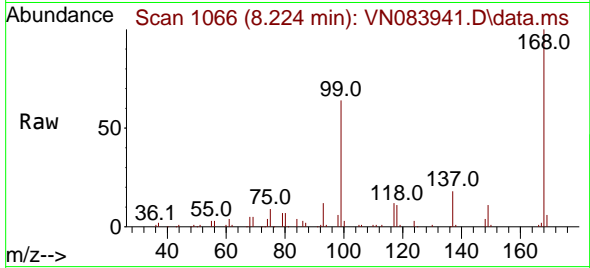




#1
 Pentafluorobenzene
 Concen: 50.000 ug/l
 RT: 8.224 min Scan# 1066
 Delta R.T. -0.000 min
 Lab File: VN083941.D
 Acq: 17 Sep 2024 13:30

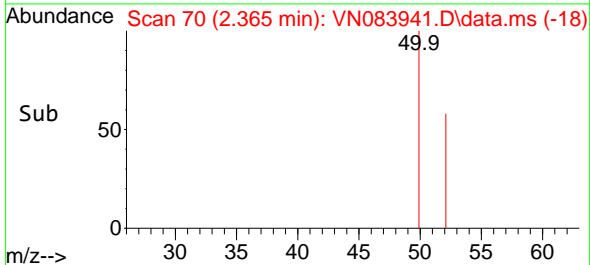
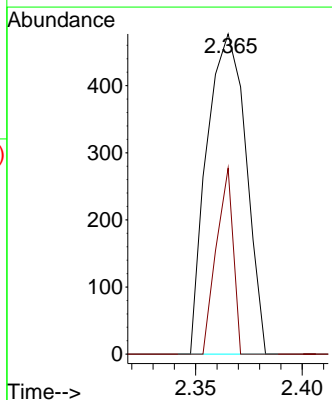
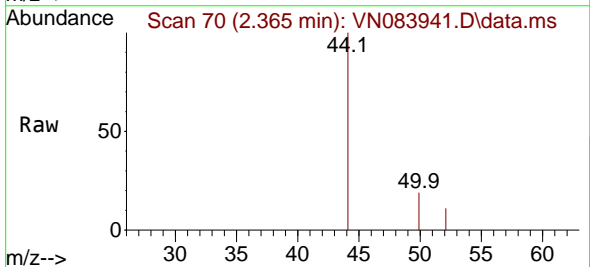
Instrument : MSVOA_N
 ClientSampleId : MW202D1-20240909

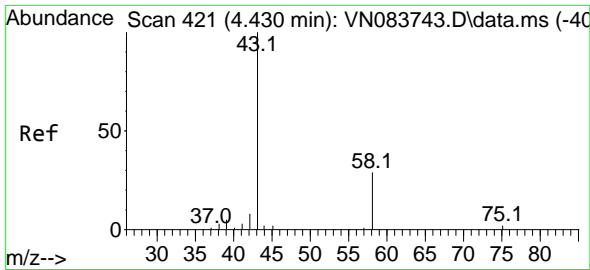
Tgt Ion:168 Resp: 173353
 Ion Ratio Lower Upper
 168 100
 99 64.0 54.2 81.2



#3
 Chloromethane
 Concen: Below Cal
 RT: 2.365 min Scan# 70
 Delta R.T. 0.006 min
 Lab File: VN083941.D
 Acq: 17 Sep 2024 13:30

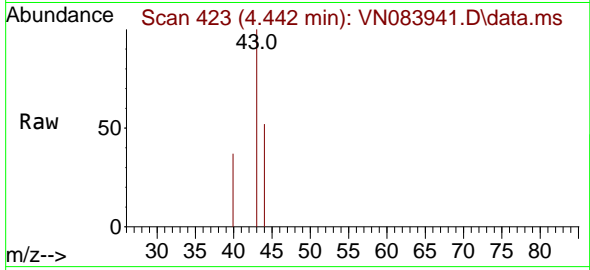
Tgt Ion: 50 Resp: 609
 Ion Ratio Lower Upper
 50 100
 52 58.1 27.2 40.8#



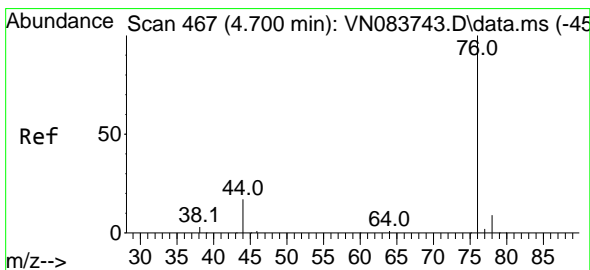
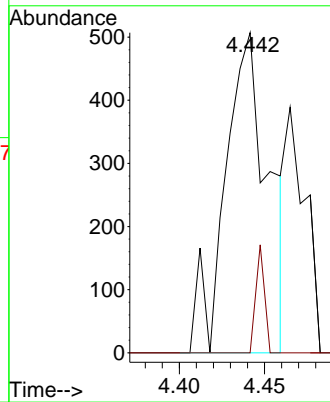
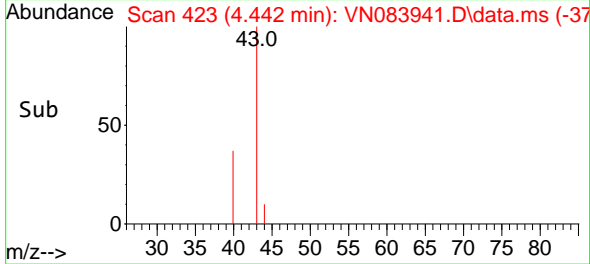


#16
 Acetone
 Concen: 0.849 ug/l
 RT: 4.442 min Scan# 411
 Delta R.T. 0.012 min
 Lab File: VN083941.D
 Acq: 17 Sep 2024 13:30

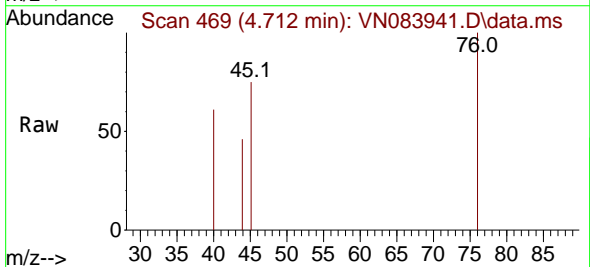
Instrument : MSVOA_N
 ClientSampleId : MW202D1-20240909



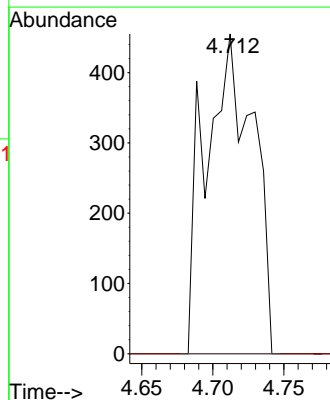
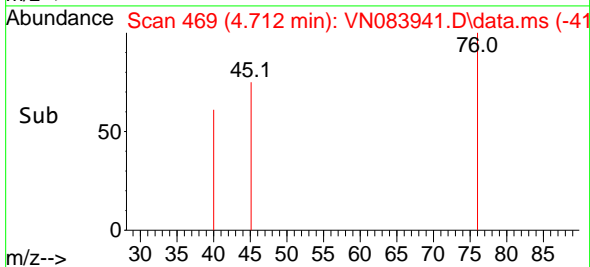
Tgt Ion: 43 Resp: 890
 Ion Ratio Lower Upper
 43 100
 58 0.0 23.7 35.5#

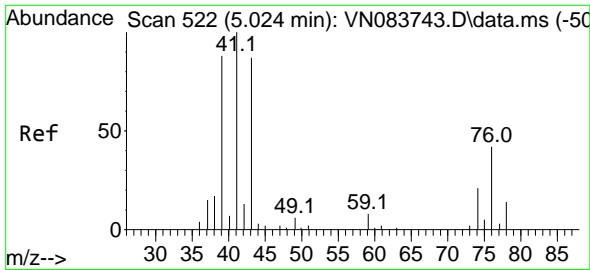


#17
 Carbon Disulfide
 Concen: 0.201 ug/l
 RT: 4.712 min Scan# 469
 Delta R.T. 0.012 min
 Lab File: VN083941.D
 Acq: 17 Sep 2024 13:30



Tgt Ion: 76 Resp: 1055
 Ion Ratio Lower Upper
 76 100
 78 0.0 7.1 10.7#

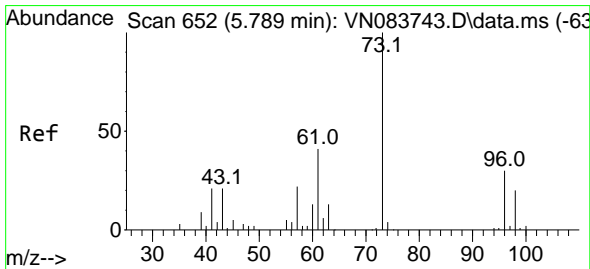
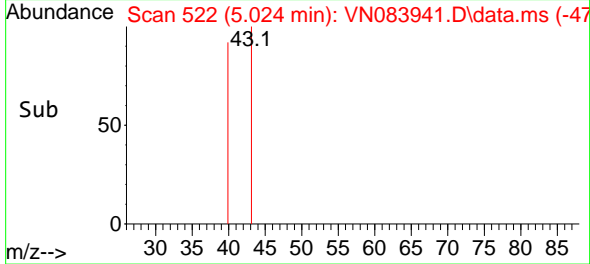
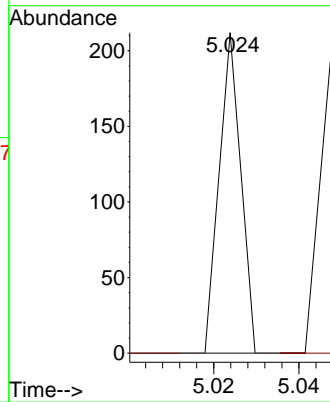
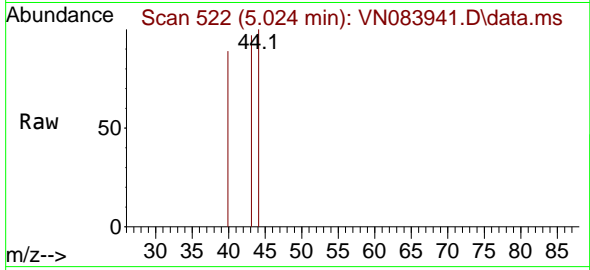




#18
 Methyl Acetate
 Concen: Below Cal
 RT: 5.024 min Scan# 51
 Delta R.T. -0.000 min
 Lab File: VN083941.D
 Acq: 17 Sep 2024 13:30

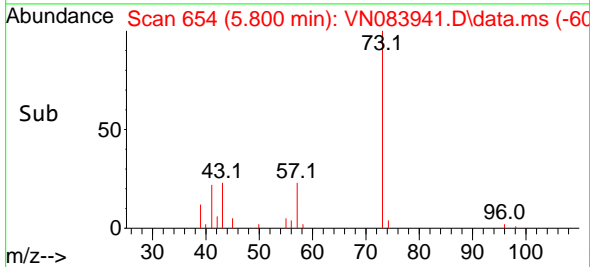
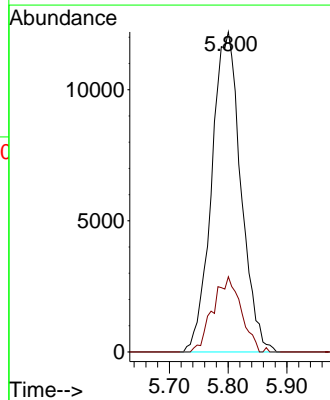
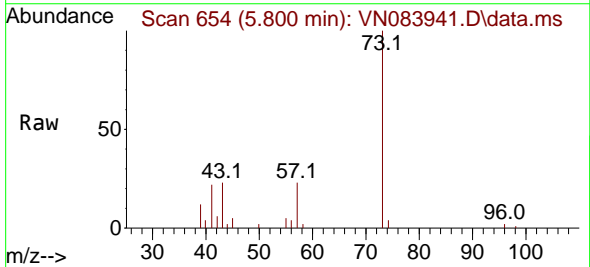
Instrument : MSVOA_N
 ClientSampleId : MW202D1-20240909

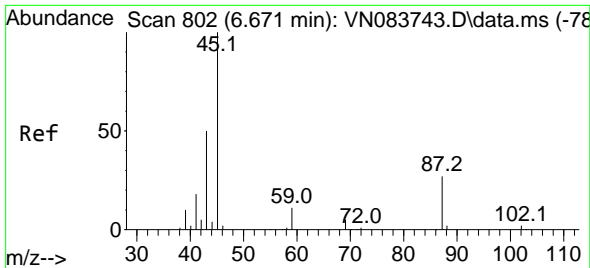
Tgt Ion: 43 Resp: 75
 Ion Ratio Lower Upper
 43 100
 74 0.0 19.0 28.4#



#19
 Methyl tert-butyl Ether
 Concen: 6.201 ug/l
 RT: 5.800 min Scan# 654
 Delta R.T. 0.012 min
 Lab File: VN083941.D
 Acq: 17 Sep 2024 13:30

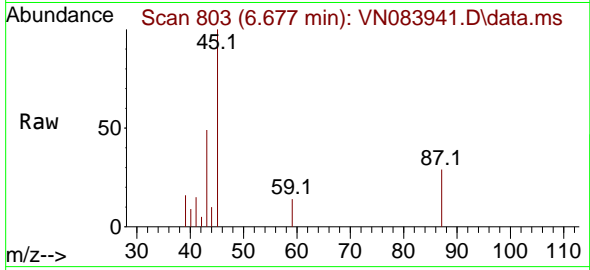
Tgt Ion: 73 Resp: 42071
 Ion Ratio Lower Upper
 73 100
 57 23.5 17.0 25.6





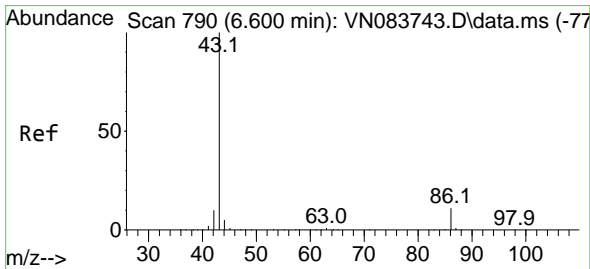
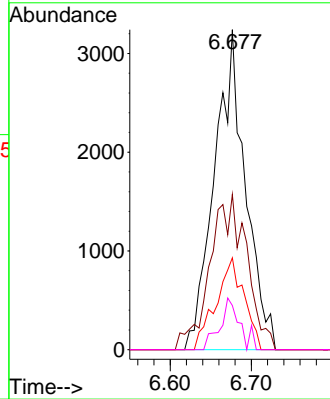
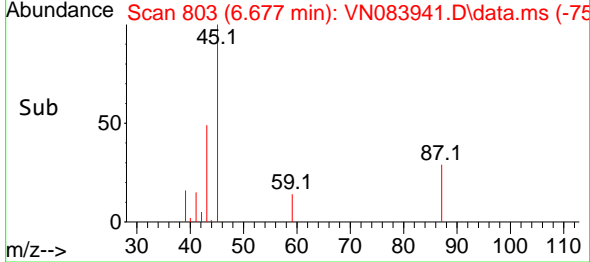
#22
 Diisopropyl ether
 Concen: 1.249 ug/l
 RT: 6.677 min Scan# 801
 Delta R.T. 0.006 min
 Lab File: VN083941.D
 Acq: 17 Sep 2024 13:30

Instrument : MSVOA_N
 ClientSampleId : MW202D1-20240909

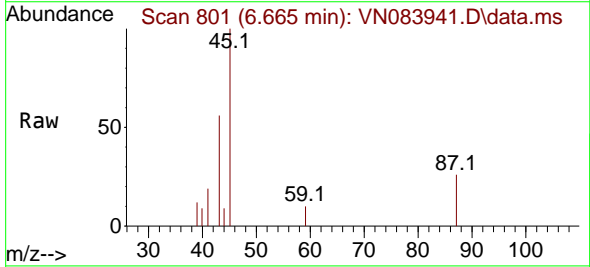


Tgt Ion: 45 Resp: 8588

Ion	Ratio	Lower	Upper
45	100		
43	48.5	43.4	65.0
87	28.7	22.6	33.8
59	13.8	9.1	13.7

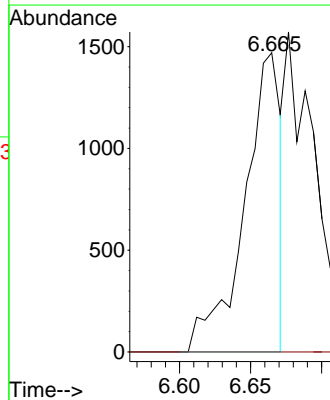
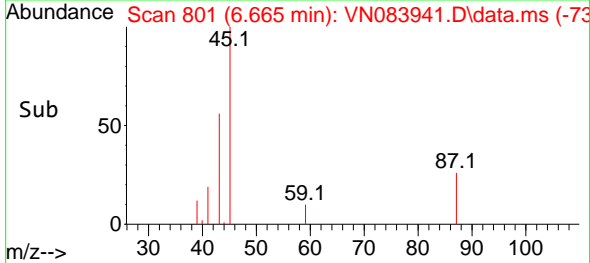


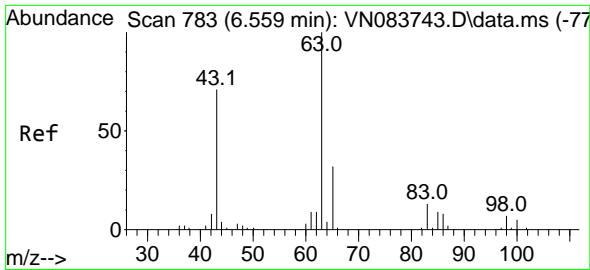
#23
 Vinyl Acetate
 Concen: 0.518 ug/l
 RT: 6.665 min Scan# 801
 Delta R.T. 0.065 min
 Lab File: VN083941.D
 Acq: 17 Sep 2024 13:30



Tgt Ion: 43 Resp: 2609

Ion	Ratio	Lower	Upper
43	100		
86	0.0	8.7	13.1

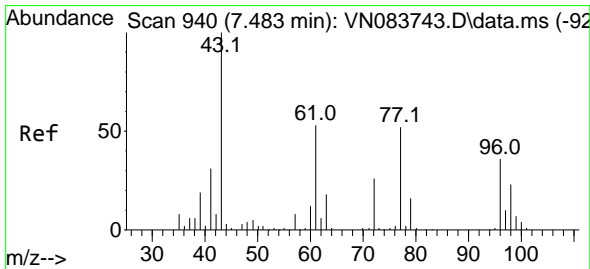
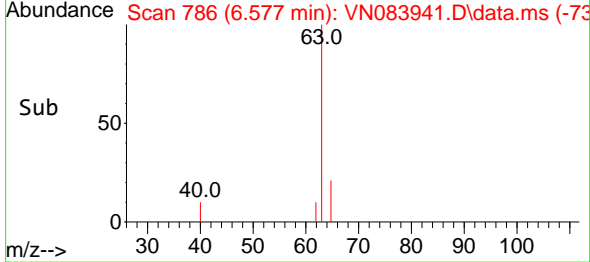
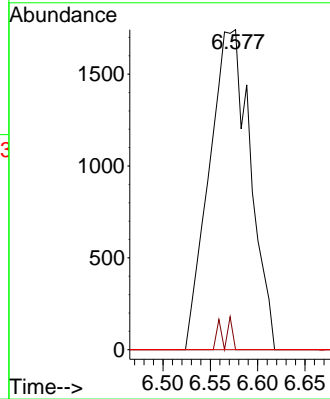
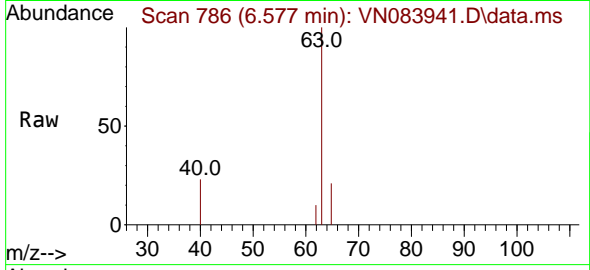




#24
 1,1-Dichloroethane
 Concen: 1.327 ug/l
 RT: 6.577 min Scan# 786
 Delta R.T. 0.018 min
 Lab File: VN083941.D
 Acq: 17 Sep 2024 13:30

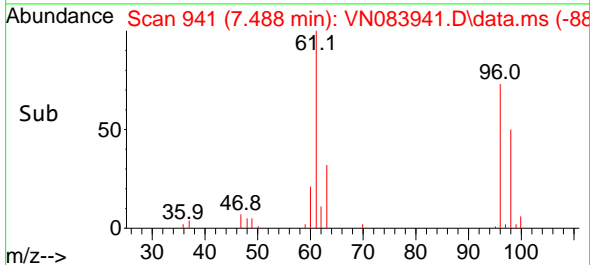
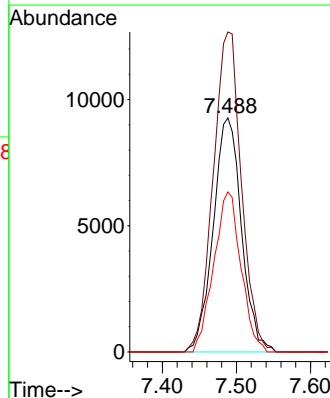
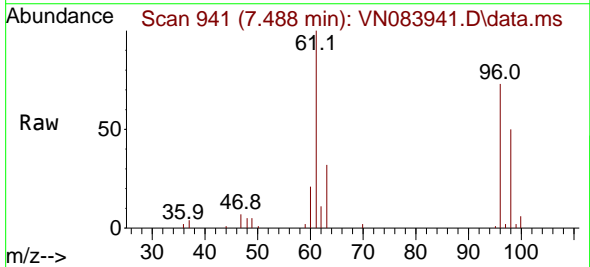
Instrument : MSVOA_N
 ClientSampleId : MW202D1-20240909

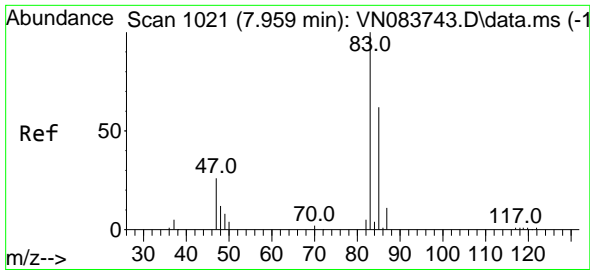
Tgt Ion	Resp	Lower	Upper
63	100		
98	0.0	3.5	10.4#
100	0.0	2.5	7.5#



#27
 cis-1,2-Dichloroethene
 Concen: 10.294 ug/l
 RT: 7.488 min Scan# 941
 Delta R.T. 0.006 min
 Lab File: VN083941.D
 Acq: 17 Sep 2024 13:30

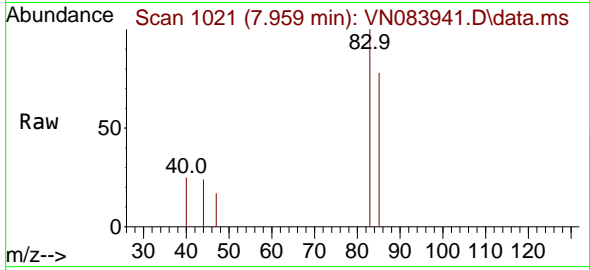
Tgt Ion	Resp	Lower	Upper
96	100		
61	136.5	0.0	306.2
98	65.7	0.0	128.6



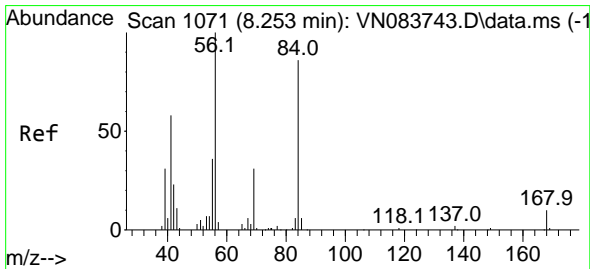
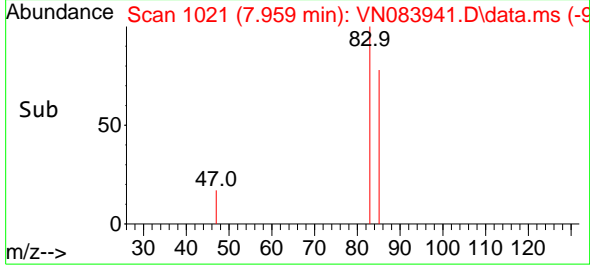
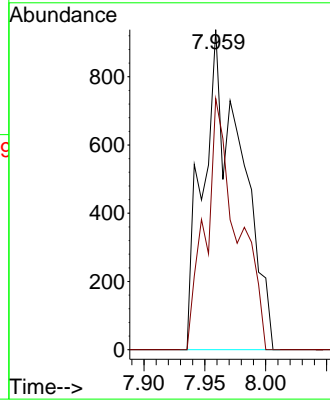


#30
 Chloroform
 Concen: 0.484 ug/l
 RT: 7.959 min Scan# 1066
 Delta R.T. -0.000 min
 Lab File: VN083941.D
 Acq: 17 Sep 2024 13:30

Instrument : MSVOA_N
 ClientSampleId : MW202D1-20240909

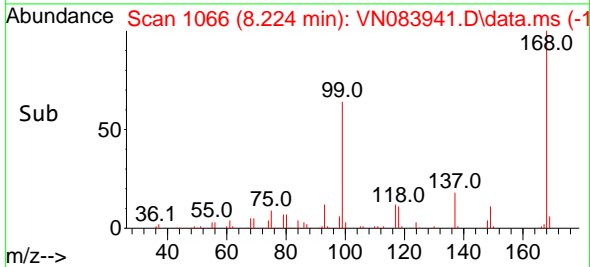
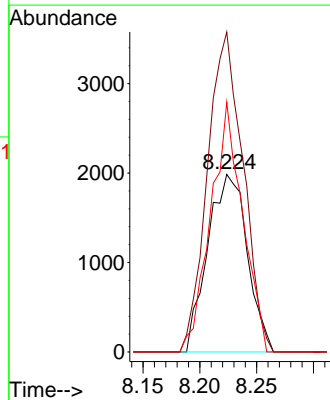
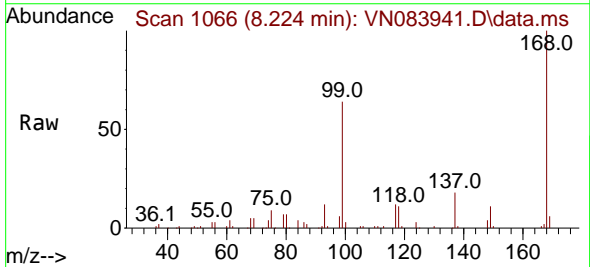


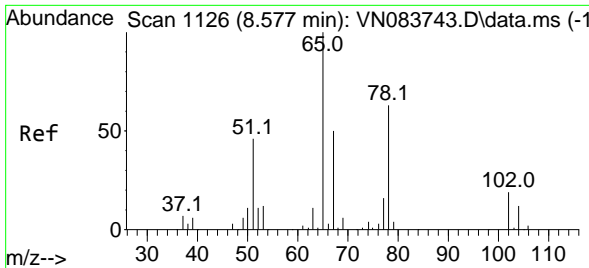
Tgt Ion: 83 Resp: 2038
 Ion Ratio Lower Upper
 83 100
 85 78.5 52.8 79.2



#31
 Cyclohexane
 Concen: 1.271 ug/l
 RT: 8.224 min Scan# 1066
 Delta R.T. -0.030 min
 Lab File: VN083941.D
 Acq: 17 Sep 2024 13:30

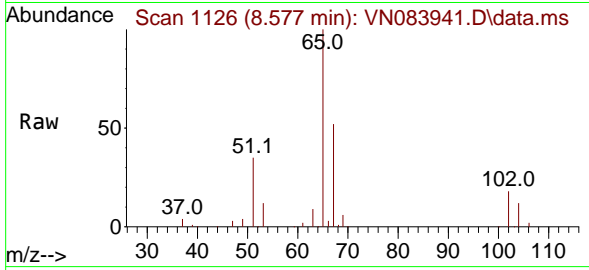
Tgt Ion: 56 Resp: 4801
 Ion Ratio Lower Upper
 56 100
 69 180.1 26.9 40.3#
 84 140.6 69.2 103.8#



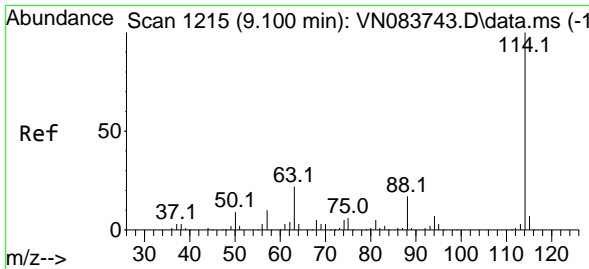
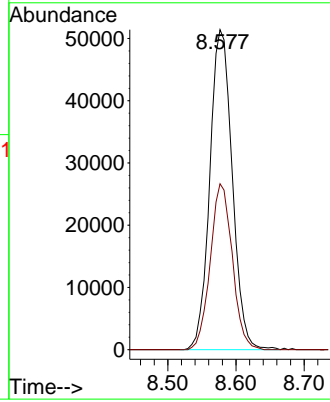
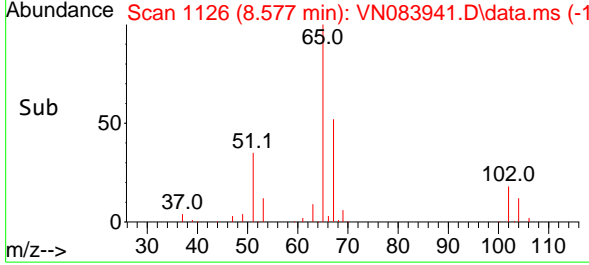


#33
 1,2-Dichloroethane-d4
 Concen: 45.033 ug/l
 RT: 8.577 min Scan# 1126
 Delta R.T. -0.000 min
 Lab File: VN083941.D
 Acq: 17 Sep 2024 13:30

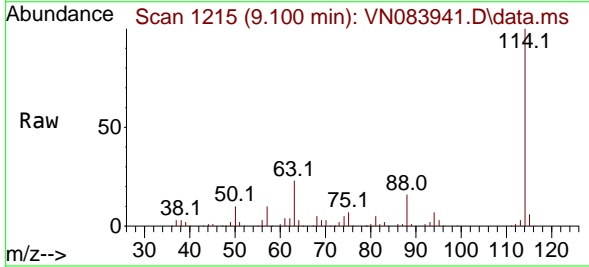
Instrument : MSVOA_N
 ClientSampleId : MW202D1-20240909



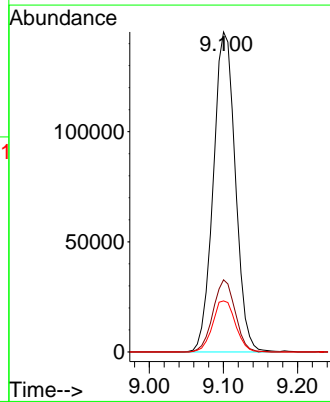
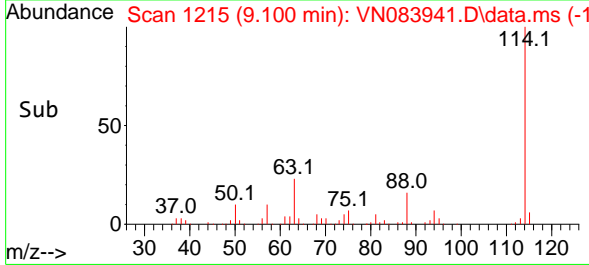
Tgt Ion: 65 Resp: 117712
 Ion Ratio Lower Upper
 65 100
 67 50.9 0.0 100.8

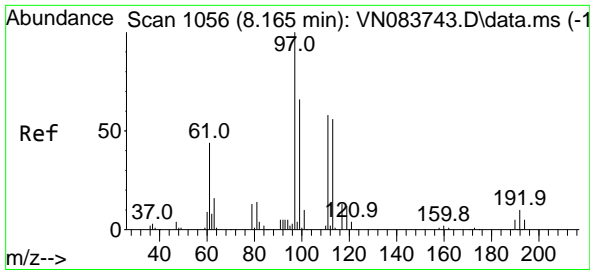


#34
 1,4-Difluorobenzene
 Concen: 50.000 ug/l
 RT: 9.100 min Scan# 1215
 Delta R.T. -0.000 min
 Lab File: VN083941.D
 Acq: 17 Sep 2024 13:30



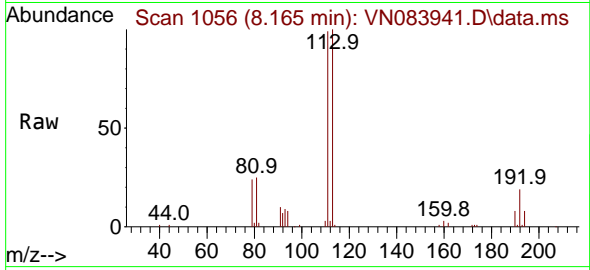
Tgt Ion: 114 Resp: 300128
 Ion Ratio Lower Upper
 114 100
 63 22.5 0.0 43.4
 88 15.9 0.0 32.6



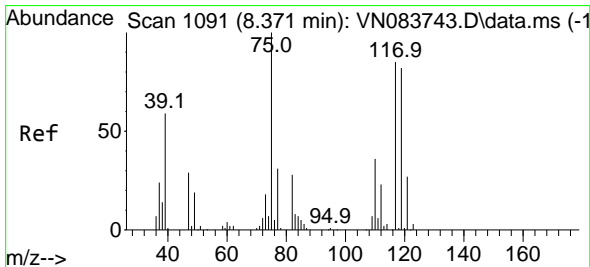
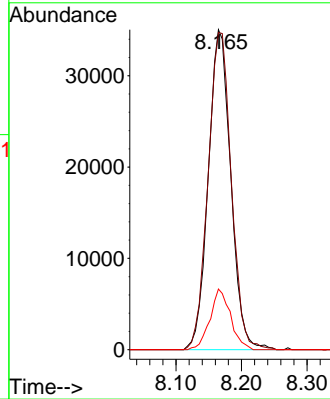
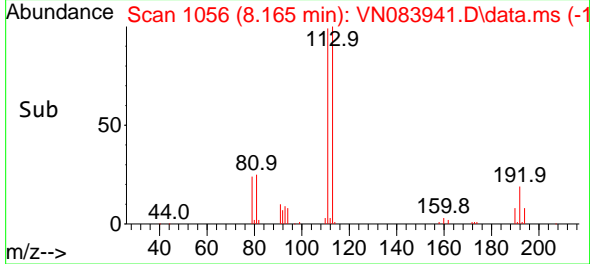


#35
 Dibromofluoromethane
 Concen: 43.433 ug/l
 RT: 8.165 min Scan# 1056
 Delta R.T. -0.000 min
 Lab File: VN083941.D
 Acq: 17 Sep 2024 13:30

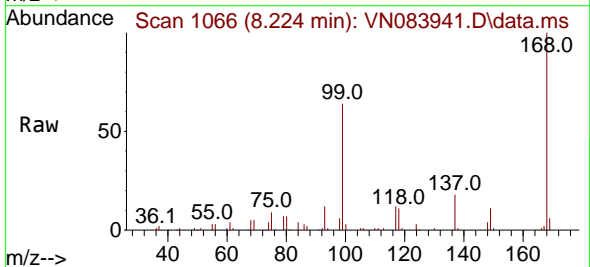
Instrument : MSVOA_N
 ClientSampleId : MW202D1-20240909



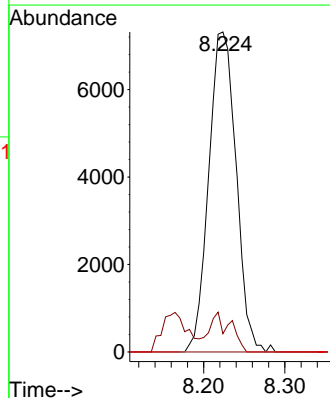
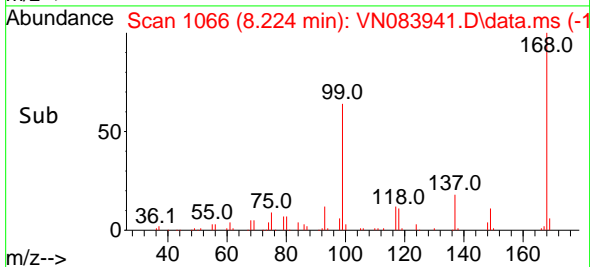
Tgt Ion:113 Resp: 83452
 Ion Ratio Lower Upper
 113 100
 111 102.3 82.6 124.0
 192 17.4 14.3 21.5

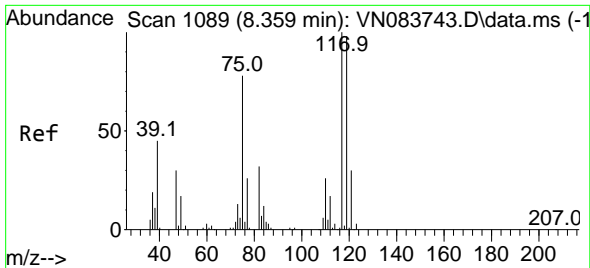


#36
 1,1-Dichloropropene
 Concen: 5.934 ug/l
 RT: 8.224 min Scan# 1066
 Delta R.T. -0.147 min
 Lab File: VN083941.D
 Acq: 17 Sep 2024 13:30



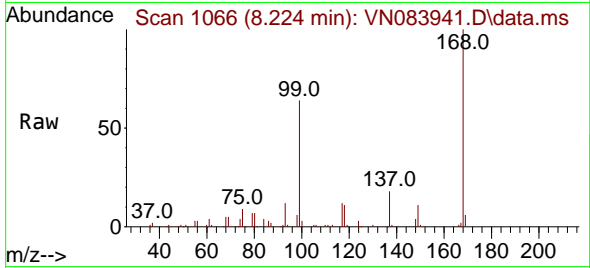
Tgt Ion: 75 Resp: 17162
 Ion Ratio Lower Upper
 75 100
 110 9.7 16.7 50.1#
 77 0.0 25.2 37.8#



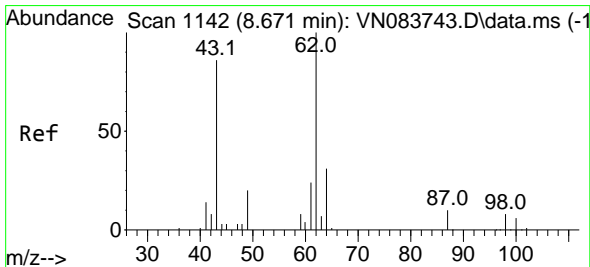
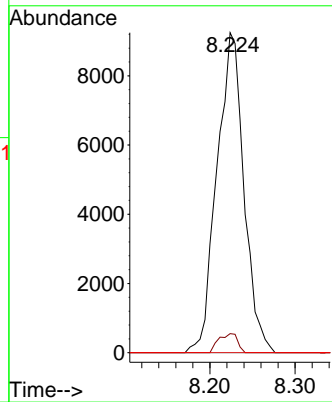
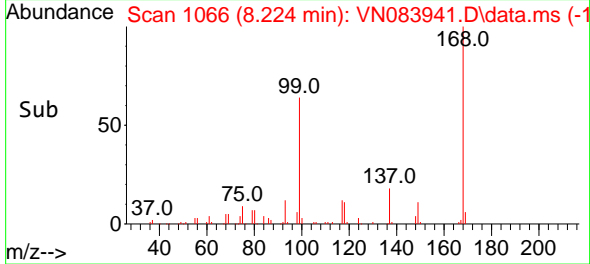


#38
 Carbon Tetrachloride
 Concen: 6.200 ug/l
 RT: 8.224 min Scan# 1066
 Delta R.T. -0.135 min
 Lab File: VN083941.D
 Acq: 17 Sep 2024 13:30

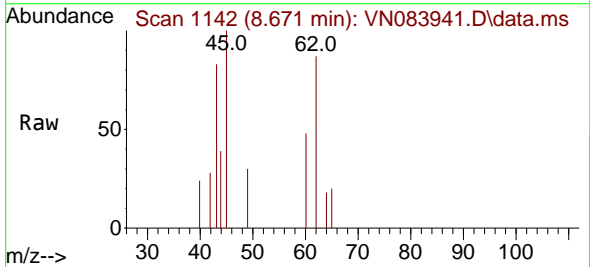
Instrument : MSVOA_N
 ClientSampleId : MW202D1-20240909



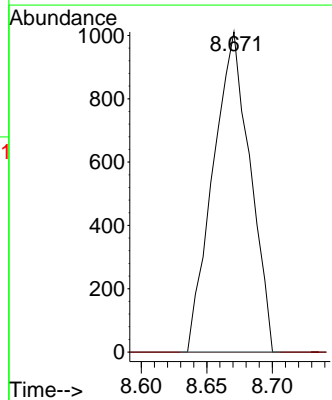
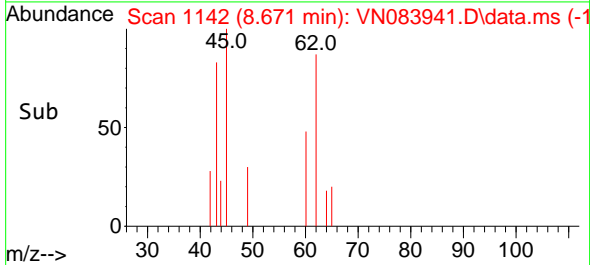
Tgt Ion: 117 Resp: 20343
 Ion Ratio Lower Upper
 117 100
 119 5.9 76.1 114.1#
 121 0.0 24.1 36.1#

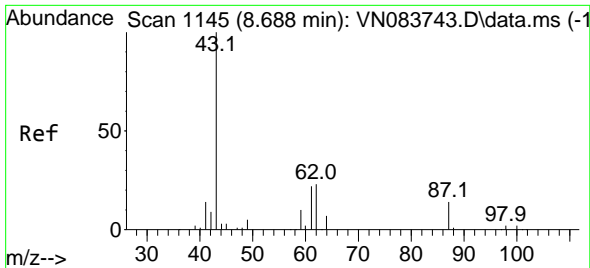


#42
 1,2-Dichloroethane
 Concen: 0.611 ug/l
 RT: 8.671 min Scan# 1142
 Delta R.T. -0.000 min
 Lab File: VN083941.D
 Acq: 17 Sep 2024 13:30



Tgt Ion: 62 Resp: 1987
 Ion Ratio Lower Upper
 62 100
 98 0.0 0.0 16.6



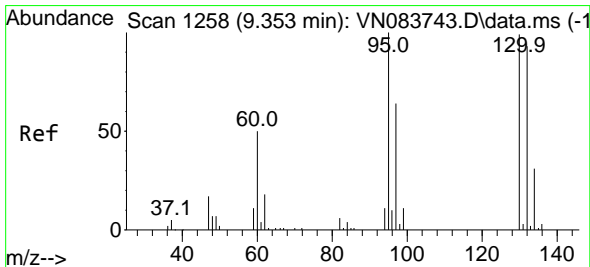
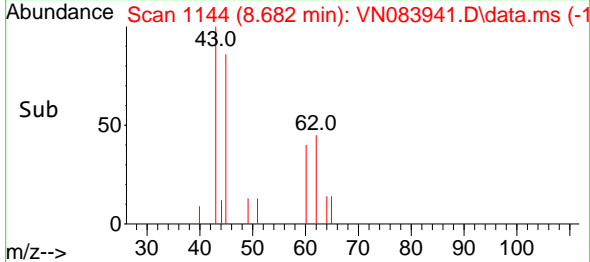
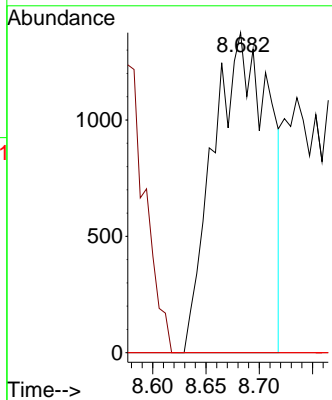
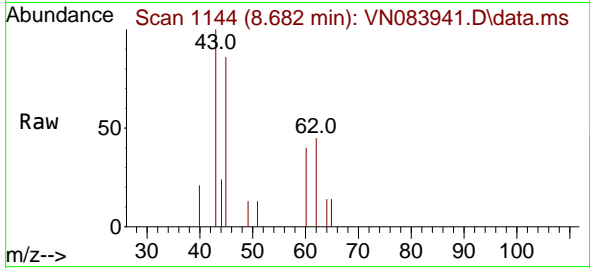


#43
 Isopropyl Acetate
 Concen: 1.058 ug/l
 RT: 8.682 min Scan# 1144
 Delta R.T. -0.006 min
 Lab File: VN083941.D
 Acq: 17 Sep 2024 13:30

Instrument : MSVOA_N
 ClientSampleId : MW202D1-20240909

Tgt Ion: 43 Resp: 5031

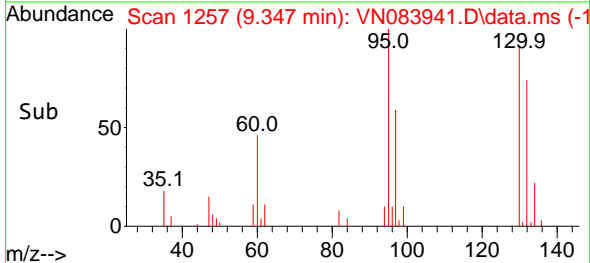
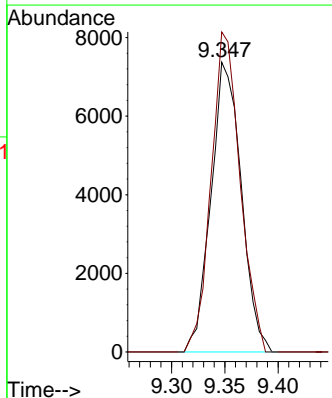
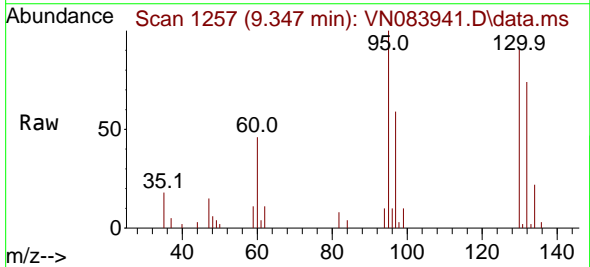
Ion	Ratio	Lower	Upper
43	100		
61	0.0	19.4	29.0#
87	0.0	9.8	14.6#

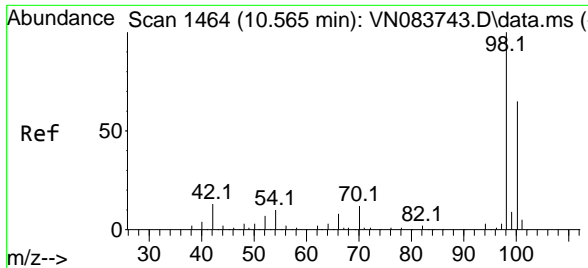


#44
 Trichloroethene
 Concen: 7.234 ug/l
 RT: 9.347 min Scan# 1257
 Delta R.T. -0.006 min
 Lab File: VN083941.D
 Acq: 17 Sep 2024 13:30

Tgt Ion: 130 Resp: 14581

Ion	Ratio	Lower	Upper
130	100		
95	110.4	0.0	200.4

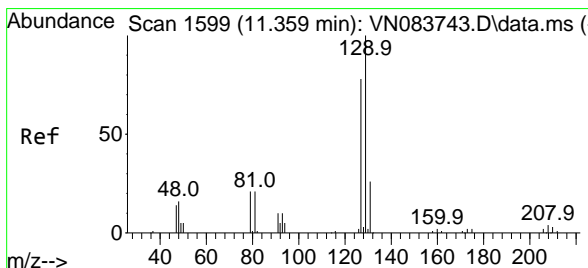
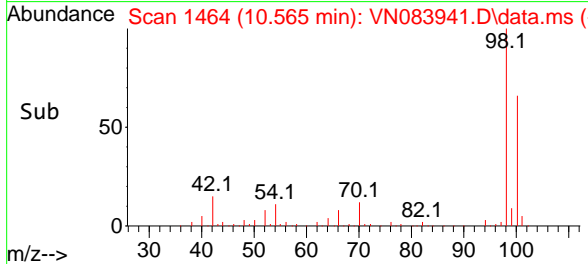
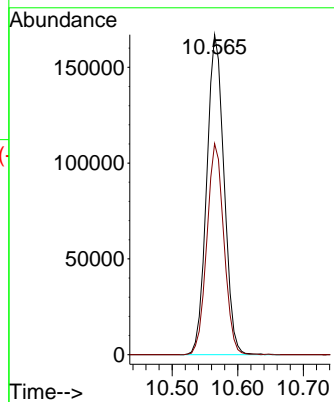
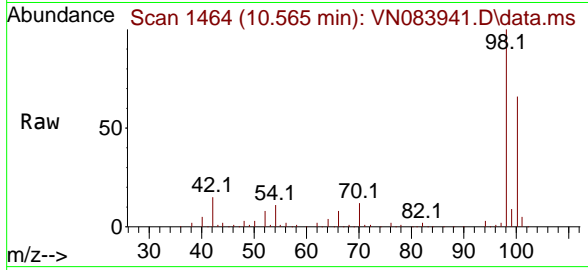




#50
 Toluene-d8
 Concen: 46.169 ug/l
 RT: 10.565 min Scan# 1464
 Delta R.T. -0.000 min
 Lab File: VN083941.D
 Acq: 17 Sep 2024 13:30

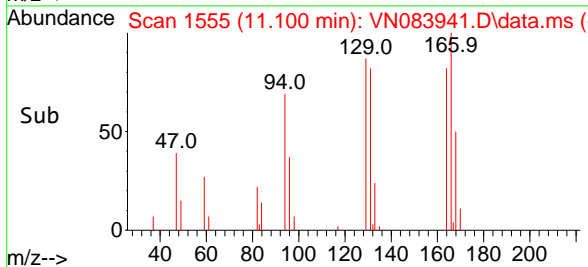
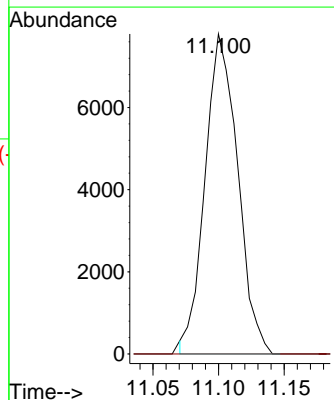
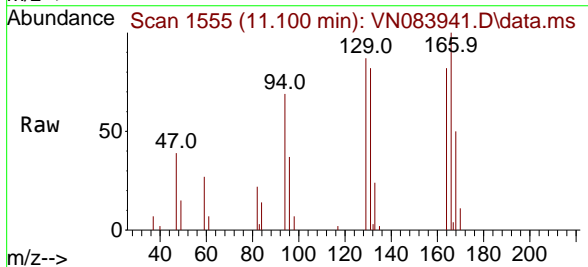
Instrument : MSVOA_N
 ClientSampleId : MW202D1-20240909

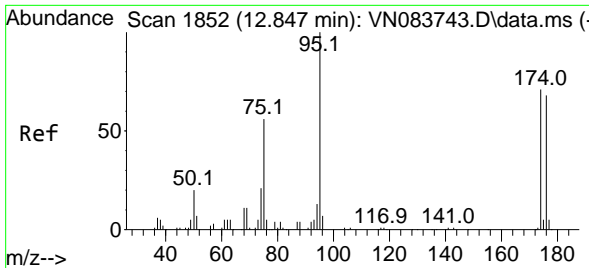
Tgt Ion: 98 Resp: 306667
 Ion Ratio Lower Upper
 98 100
 100 65.0 52.0 78.0



#60
 Dibromochloromethane
 Concen: 6.061 ug/l
 RT: 11.100 min Scan# 1555
 Delta R.T. -0.259 min
 Lab File: VN083941.D
 Acq: 17 Sep 2024 13:30

Tgt Ion: 129 Resp: 13482
 Ion Ratio Lower Upper
 129 100
 127 0.0 39.0 116.9#



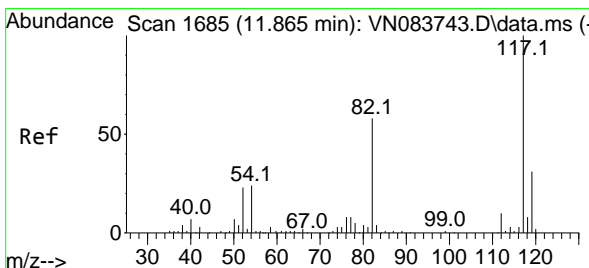
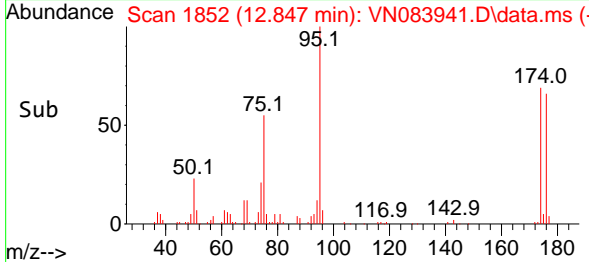
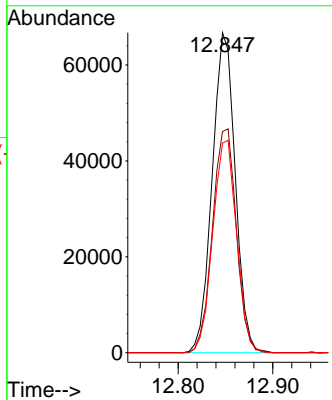
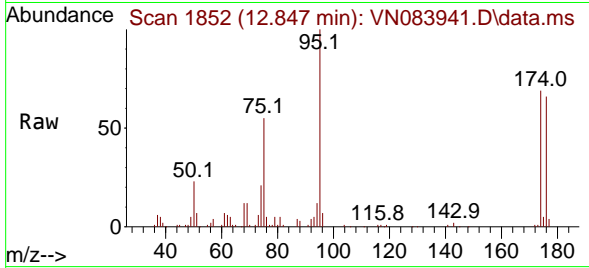


#62
 4-Bromofluorobenzene
 Concen: 41.171 ug/l
 RT: 12.847 min Scan# 1852
 Delta R.T. -0.000 min
 Lab File: VN083941.D
 Acq: 17 Sep 2024 13:30

Instrument : MSVOA_N
 ClientSampleId : MW202D1-20240909

Tgt Ion: 95 Resp: 112828

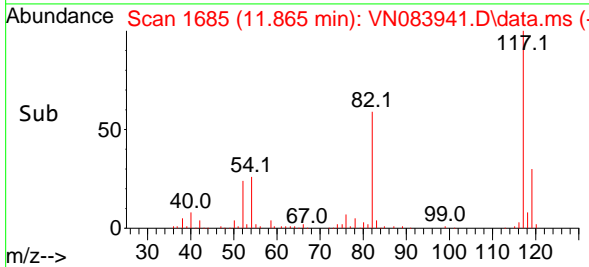
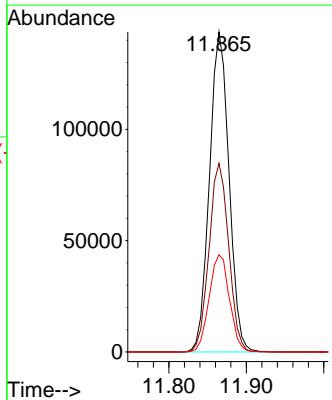
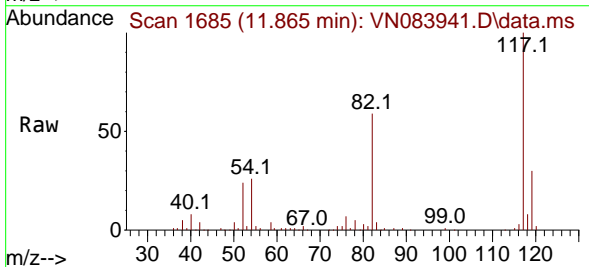
Ion	Ratio	Lower	Upper
95	100		
174	72.5	0.0	139.8
176	68.6	0.0	131.4

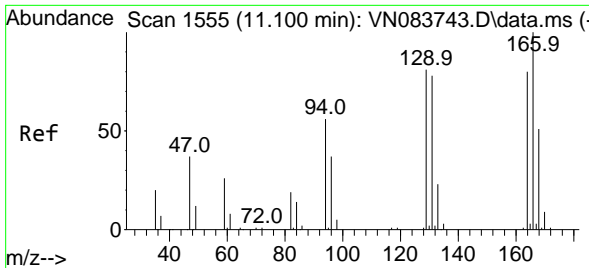


#63
 Chlorobenzene-d5
 Concen: 50.000 ug/l
 RT: 11.865 min Scan# 1685
 Delta R.T. -0.000 min
 Lab File: VN083941.D
 Acq: 17 Sep 2024 13:30

Tgt Ion: 117 Resp: 251668

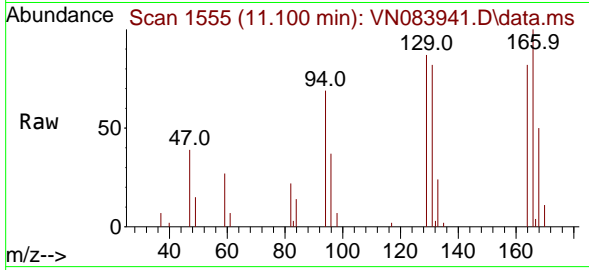
Ion	Ratio	Lower	Upper
117	100		
82	58.9	47.4	71.0
119	30.4	26.3	39.5



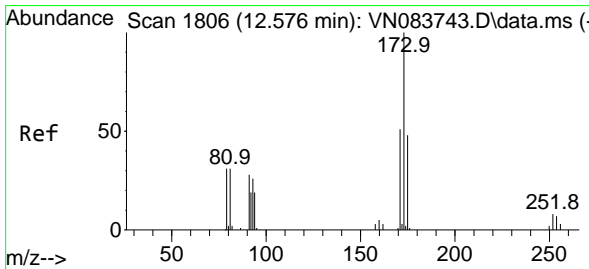
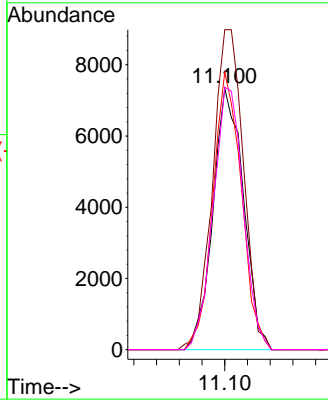
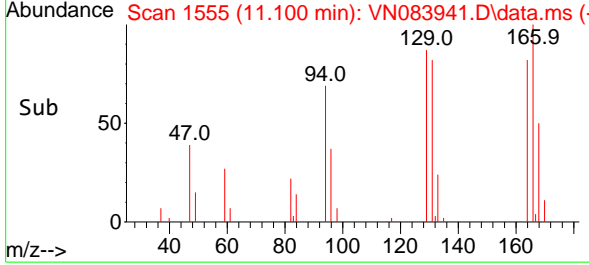


#64
 Tetrachloroethene
 Concen: 8.169 ug/l
 RT: 11.100 min Scan# 1110
 Delta R.T. -0.000 min
 Lab File: VN083941.D
 Acq: 17 Sep 2024 13:30

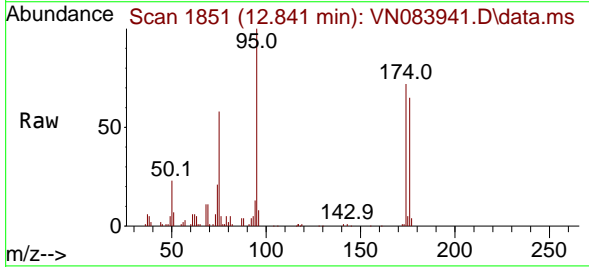
Instrument : MSVOA_N
 ClientSampleId : MW202D1-20240909



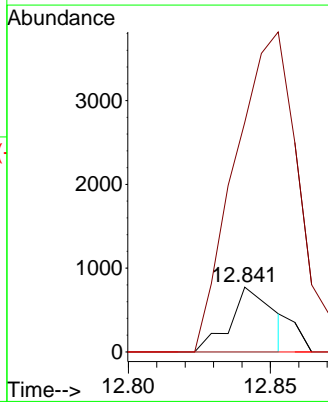
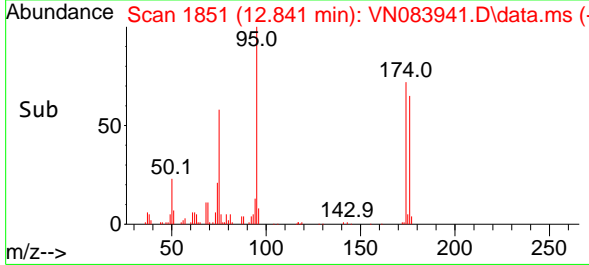
Tgt Ion:164 Resp: 13672
 Ion Ratio Lower Upper
 164 100
 166 122.4 103.7 155.5
 129 106.2 79.9 119.9
 131 100.4 78.4 117.6

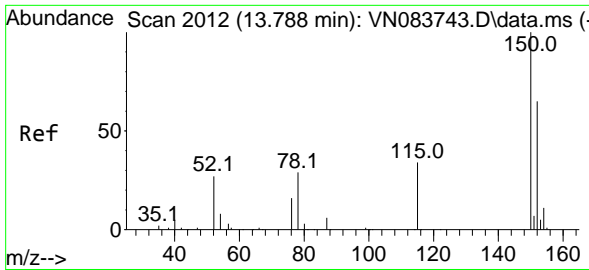


#71
 Bromoform
 Concen: 0.618 ug/l
 RT: 12.841 min Scan# 1851
 Delta R.T. 0.265 min
 Lab File: VN083941.D
 Acq: 17 Sep 2024 13:30



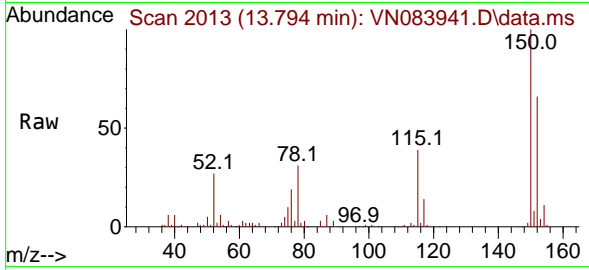
Tgt Ion:173 Resp: 807
 Ion Ratio Lower Upper
 173 100
 175 0.0 24.1 72.2#
 254 0.0 0.0 0.0



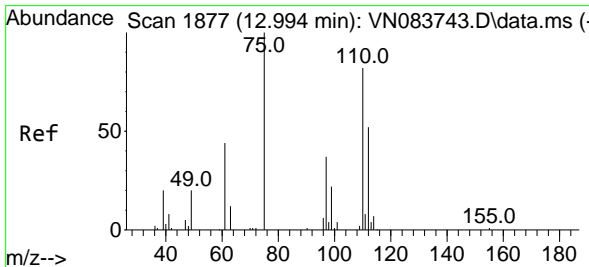
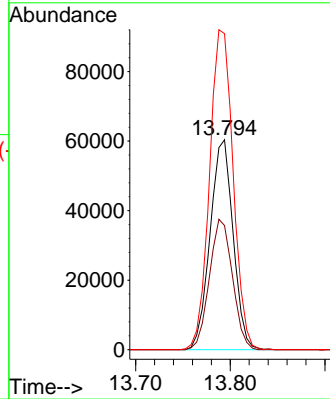
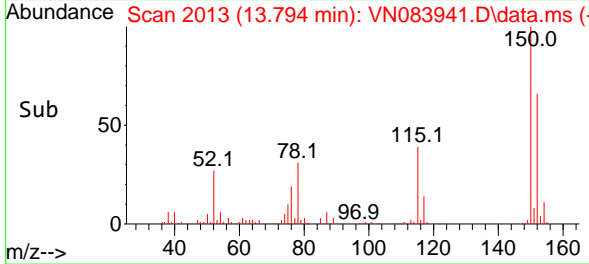


#72
 1,4-Dichlorobenzene-d4
 Concen: 50.000 ug/l
 RT: 13.794 min Scan# 2012
 Delta R.T. 0.006 min
 Lab File: VN083941.D
 Acq: 17 Sep 2024 13:30

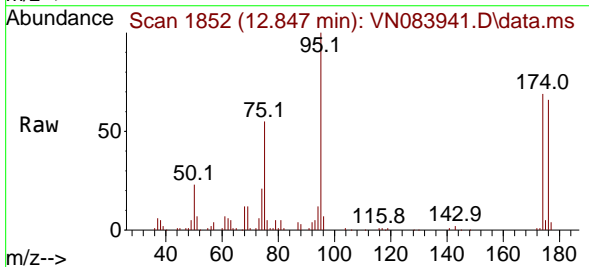
Instrument : MSVOA_N
 ClientSampleId : MW202D1-20240909



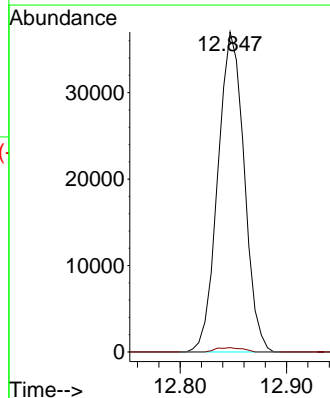
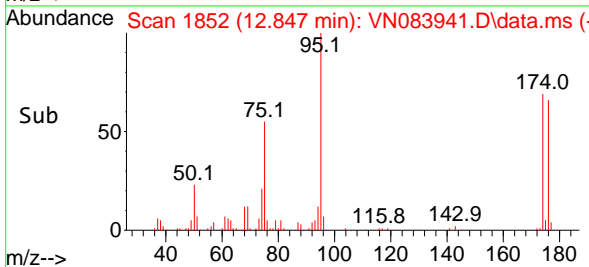
Tgt Ion:152 Resp: 102172
 Ion Ratio Lower Upper
 152 100
 115 62.0 32.2 96.6
 150 155.7 0.0 348.6

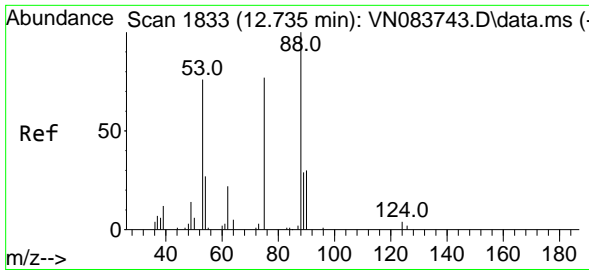


#76
 1,2,3-Trichloropropane
 Concen: 30.831 ug/l
 RT: 12.847 min Scan# 1852
 Delta R.T. -0.147 min
 Lab File: VN083941.D
 Acq: 17 Sep 2024 13:30



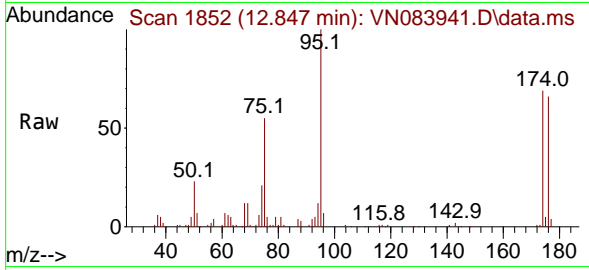
Tgt Ion: 75 Resp: 63561
 Ion Ratio Lower Upper
 75 100
 77 1.4 95.2 285.6#



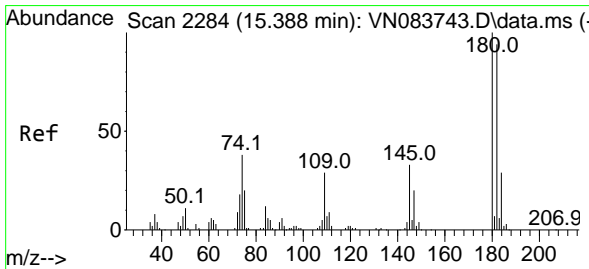
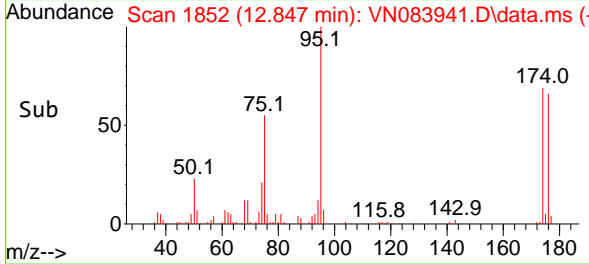
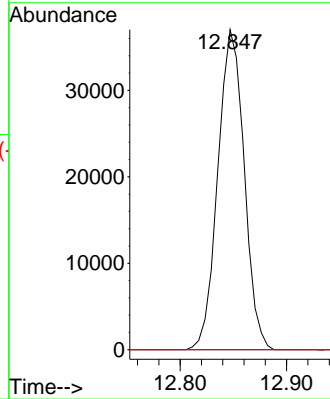


#81
 trans-1,4-Dichloro-2-butene
 Concen: 80.747 ug/l
 RT: 12.847 min Scan# 1833
 Delta R.T. 0.112 min
 Lab File: VN083941.D
 Acq: 17 Sep 2024 13:30

Instrument : MSVOA_N
 ClientSampleId : MW202D1-20240909

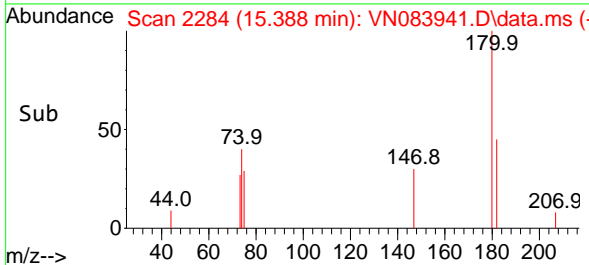
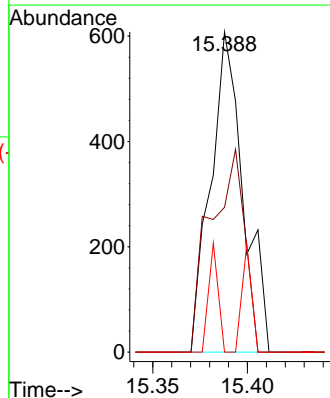
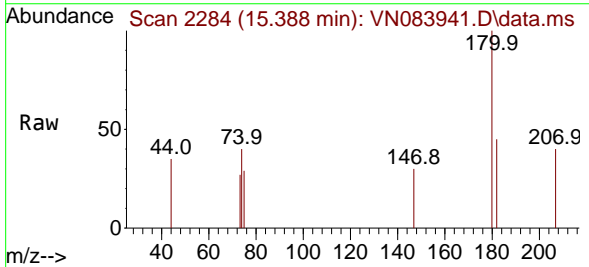


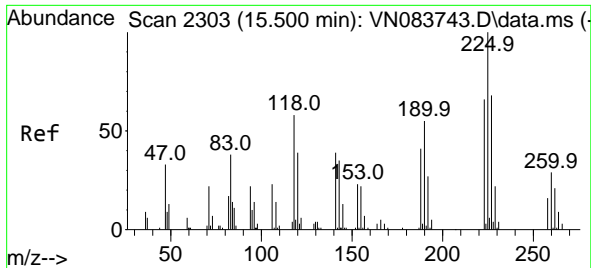
Tgt Ion: 75 Resp: 63561
 Ion Ratio Lower Upper
 75 100
 53 0.0 81.2 121.8#
 89 0.0 35.7 53.5#



#93
 1,2,4-Trichlorobenzene
 Concen: 0.395 ug/l
 RT: 15.388 min Scan# 2284
 Delta R.T. -0.000 min
 Lab File: VN083941.D
 Acq: 17 Sep 2024 13:30

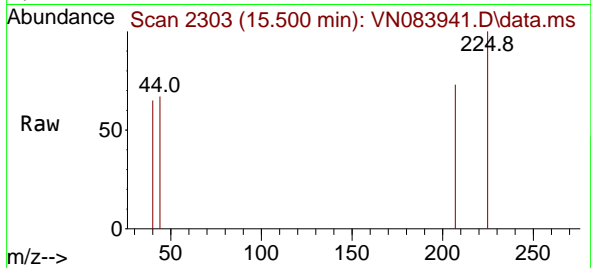
Tgt Ion:180 Resp: 734
 Ion Ratio Lower Upper
 180 100
 182 0.0 48.1 144.3#
 145 9.9 16.9 50.7#





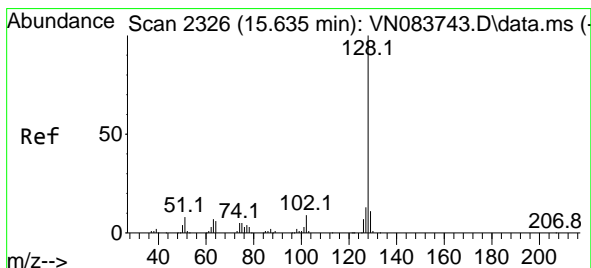
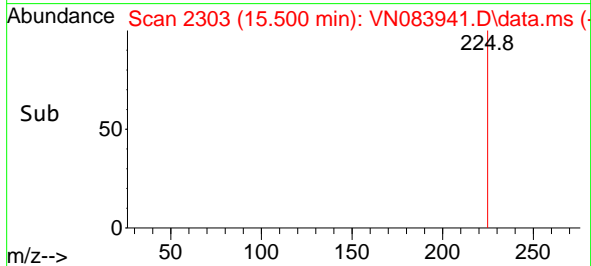
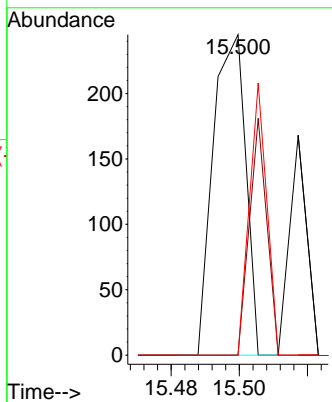
#94
 Hexachlorobutadiene
 Concen: 0.205 ug/l
 RT: 15.500 min Scan# 21
 Delta R.T. -0.000 min
 Lab File: VN083941.D
 Acq: 17 Sep 2024 13:30

Instrument : MSVOA_N
 ClientSampleId : MW202D1-20240909



Tgt Ion:225 Resp: 162

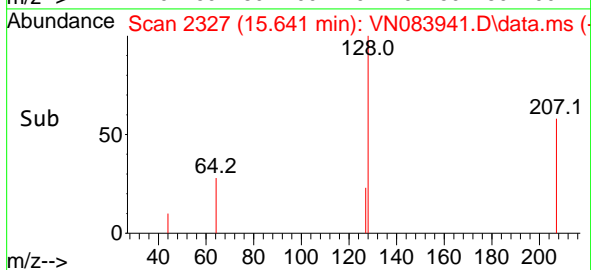
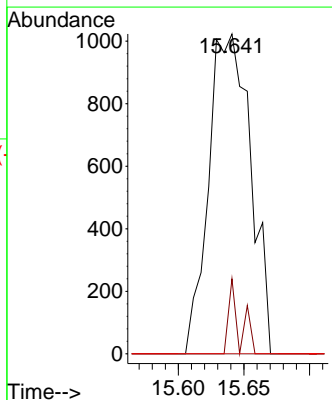
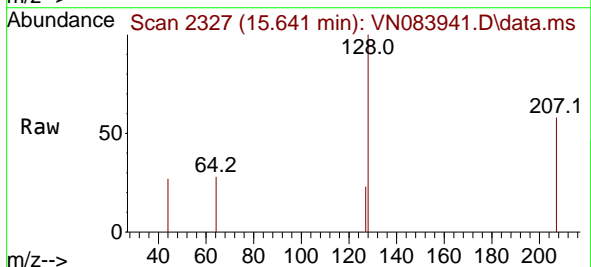
Ion	Ratio	Lower	Upper
225	100		
223	39.5	31.9	95.5
227	45.1	32.0	96.2

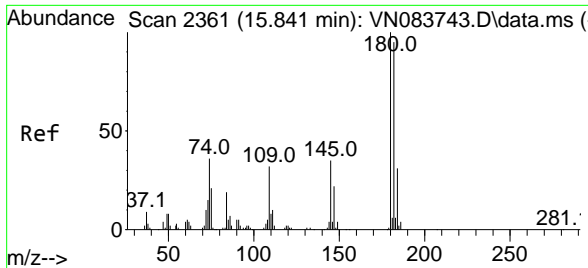


#95
 Naphthalene
 Concen: 0.401 ug/l
 RT: 15.641 min Scan# 2327
 Delta R.T. 0.006 min
 Lab File: VN083941.D
 Acq: 17 Sep 2024 13:30

Tgt Ion:128 Resp: 2271

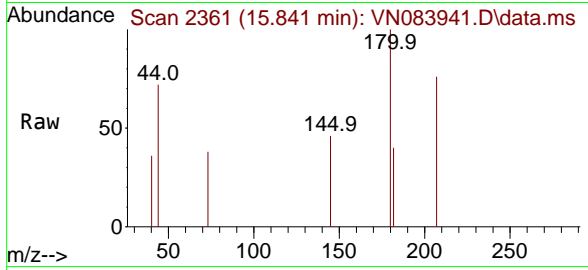
Ion	Ratio	Lower	Upper
128	100		
127	6.1	10.2	15.2#
129	0.0	8.7	13.1#





#96
 1,2,3-Trichlorobenzene
 Concen: 0.347 ug/l
 RT: 15.841 min Scan# 21
 Delta R.T. -0.000 min
 Lab File: VN083941.D
 Acq: 17 Sep 2024 13:30

Instrument : MSVOA_N
 ClientSampleId : MW202D1-20240909



Tgt Ion:180 Resp: 616

Ion	Ratio	Lower	Upper
180	100		
182	81.8	47.1	141.4
145	33.3	17.8	53.5

