

Data Path : Z:\voasrv\HPCHEM1\MSVOA_N\Data\VN091724\
 Data File : VN083942.D
 Acq On : 17 Sep 2024 13:53
 Operator : JC\MD
 Sample : P3957-01
 Misc : 5.0mL/MSVOA_N/WATER
 ALS Vial : 14 Sample Multiplier: 1

Instrument :
 MSVOA_N
 ClientSampleId :
 MW202D-20240909

Quant Time: Sep 18 01:48:20 2024
 Quant Method : Z:\voasrv\HPCHEM1\MSVOA_N\methods\82N091024W.M
 Quant Title : SW846 8260
 QLast Update : Wed Sep 11 15:18:56 2024
 Response via : Initial Calibration

Compound	R.T.	QIon	Response	Conc	Units	Dev(Min)

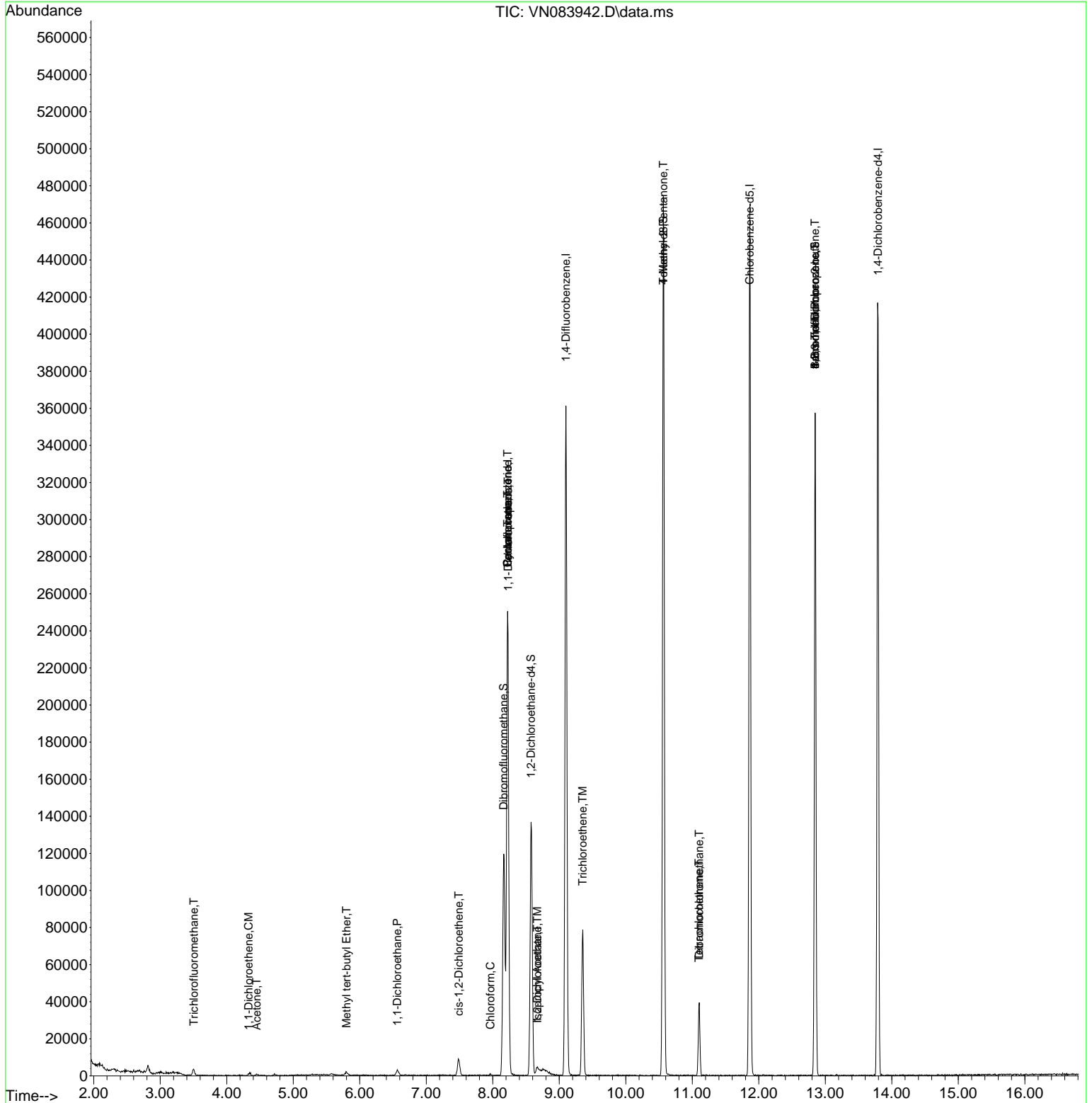
Internal Standards						
1) Pentafluorobenzene	8.224	168	167327	50.000	ug/l	0.00
34) 1,4-Difluorobenzene	9.100	114	293811	50.000	ug/l	0.00
63) Chlorobenzene-d5	11.865	117	250330	50.000	ug/l	0.00
72) 1,4-Dichlorobenzene-d4	13.794	152	105742	50.000	ug/l	0.00
System Monitoring Compounds						
33) 1,2-Dichloroethane-d4	8.577	65	117022	46.381	ug/l	0.00
Spiked Amount	50.000	Range 74 - 125	Recovery	=	92.760%	
35) Dibromofluoromethane	8.165	113	85122	45.255	ug/l	0.00
Spiked Amount	50.000	Range 75 - 124	Recovery	=	90.520%	
50) Toluene-d8	10.565	98	312470	48.054	ug/l	0.00
Spiked Amount	50.000	Range 86 - 113	Recovery	=	96.100%	
62) 4-Bromofluorobenzene	12.847	95	117194	43.684	ug/l	0.00
Spiked Amount	50.000	Range 77 - 121	Recovery	=	87.360%	
Target Compounds						
						Qvalue
3) Chloromethane	2.365	50	495	Below Cal	#	41
7) Trichlorofluoromethane	3.506	101	3601	0.996	ug/l	96
12) 1,1-Dichloroethene	4.330	96	420	0.232	ug/l #	21
16) Acetone	4.447	43	955	0.944	ug/l #	45
18) Methyl Acetate	5.047	43	120	Below Cal	#	52
19) Methyl tert-butyl Ether	5.800	73	2483	0.379	ug/l	96
24) 1,1-Dichloroethane	6.565	63	4740	1.239	ug/l #	87
27) cis-1,2-Dichloroethene	7.488	96	5697	2.474	ug/l	83
30) Chloroform	7.965	83	863	0.213	ug/l #	17
31) Cyclohexane	8.224	56	4573	1.254	ug/l #	1
36) 1,1-Dichloropropene	8.230	75	15718	5.552	ug/l #	51
38) Carbon Tetrachloride	8.224	117	20049	6.242	ug/l #	15
42) 1,2-Dichloroethane	8.671	62	1474	0.463	ug/l #	77
43) Isopropyl Acetate	8.671	43	2477	0.532	ug/l #	57
44) Trichloroethene	9.353	130	26144	13.249	ug/l	93
51) 4-Methyl-2-Pentanone	10.565	43	1634	0.645	ug/l #	1
60) Dibromochloromethane	11.106	129	7729	3.549	ug/l #	10
64) Tetrachloroethene	11.100	164	8232	4.945	ug/l	88
71) Bromoform	12.847	173	688	0.529	ug/l #	29
76) 1,2,3-Trichloropropane	12.847	75	68165	31.947	ug/l #	1
81) trans-1,4-Dichloro-2-b...	12.847	75	68165	83.673	ug/l #	9

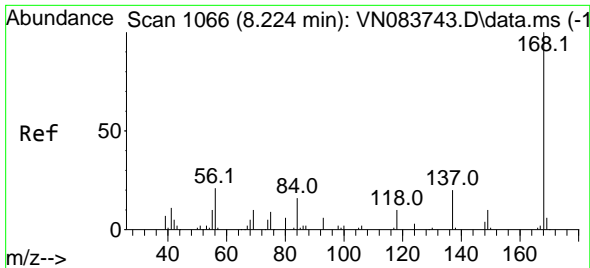
(#) = qualifier out of range (m) = manual integration (+) = signals summed

Data Path : Z:\voasrv\HPCHEM1\MSVOA_N\Data\VN091724\
 Data File : VN083942.D
 Acq On : 17 Sep 2024 13:53
 Operator : JC\MD
 Sample : P3957-01
 Misc : 5.0mL/MSVOA_N/WATER
 ALS Vial : 14 Sample Multiplier: 1

Instrument :
 MSVOA_N
 ClientSampleId :
 MW202D-20240909

Quant Time: Sep 18 01:48:20 2024
 Quant Method : Z:\voasrv\HPCHEM1\MSVOA_N\methods\82N091024W.M
 Quant Title : SW846 8260
 QLast Update : Wed Sep 11 15:18:56 2024
 Response via : Initial Calibration

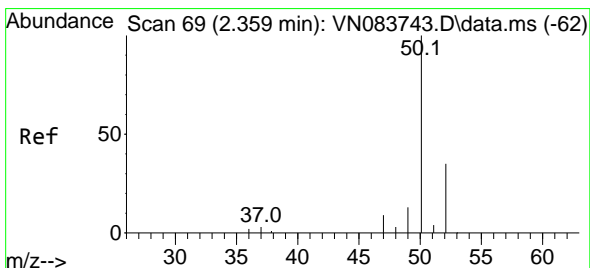
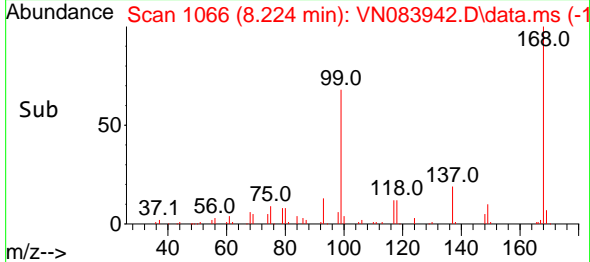
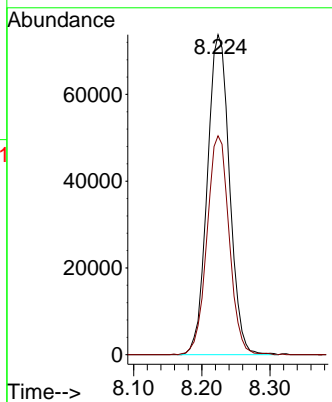
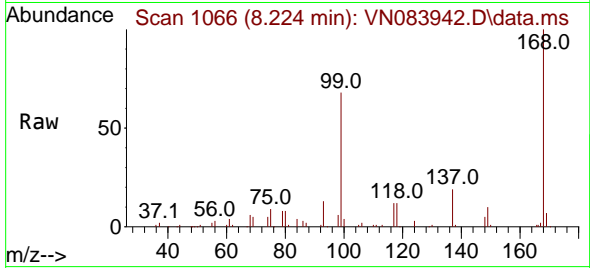




#1
 Pentafluorobenzene
 Concen: 50.000 ug/l
 RT: 8.224 min Scan# 1066
 Delta R.T. -0.000 min
 Lab File: VN083942.D
 Acq: 17 Sep 2024 13:53

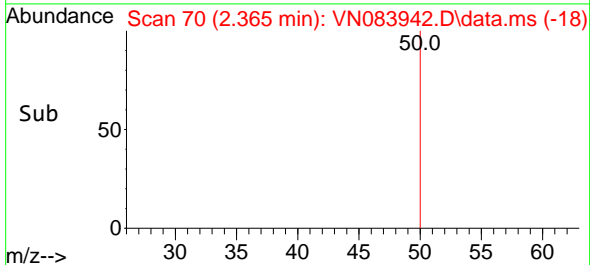
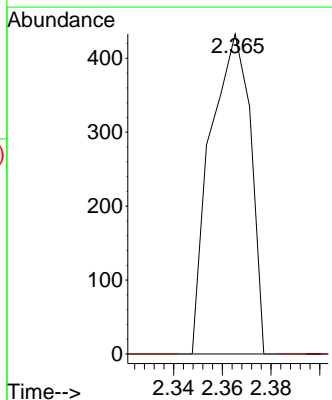
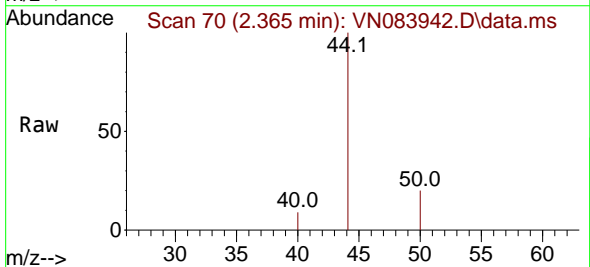
Instrument : MSVOA_N
 ClientSampleId : MW202D-20240909

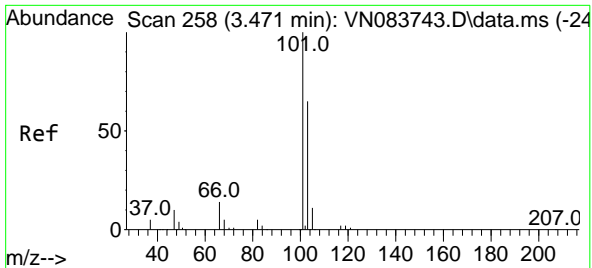
Tgt Ion:168 Resp: 167327
 Ion Ratio Lower Upper
 168 100
 99 68.4 54.2 81.2



#3
 Chloromethane
 Concen: Below Cal
 RT: 2.365 min Scan# 70
 Delta R.T. 0.006 min
 Lab File: VN083942.D
 Acq: 17 Sep 2024 13:53

Tgt Ion: 50 Resp: 495
 Ion Ratio Lower Upper
 50 100
 52 0.0 27.2 40.8#

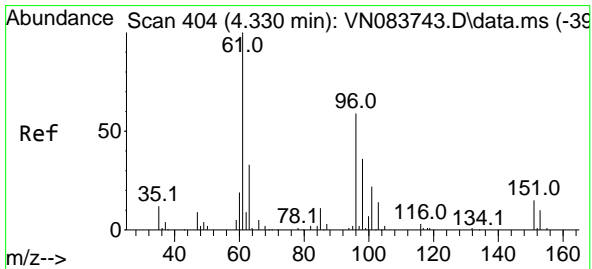
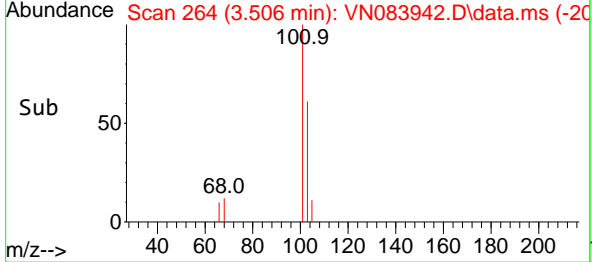
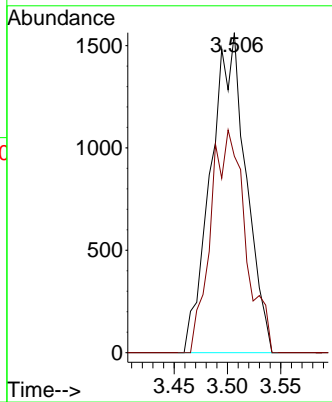
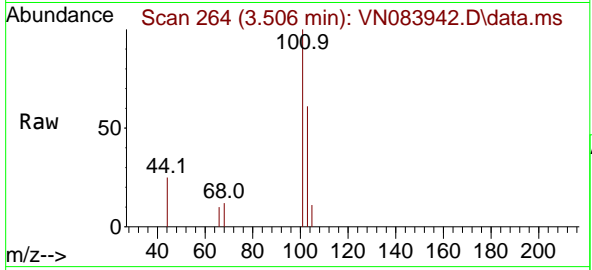




#7
 Trichlorofluoromethane
 Concen: 0.996 ug/l
 RT: 3.506 min Scan# 20
 Delta R.T. 0.035 min
 Lab File: VN083942.D
 Acq: 17 Sep 2024 13:53

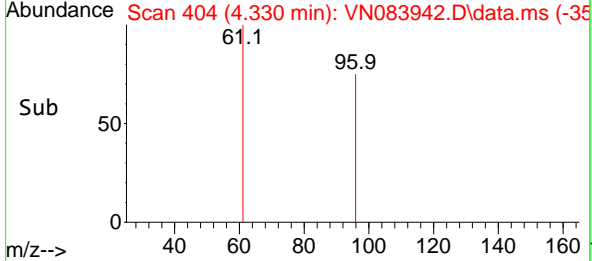
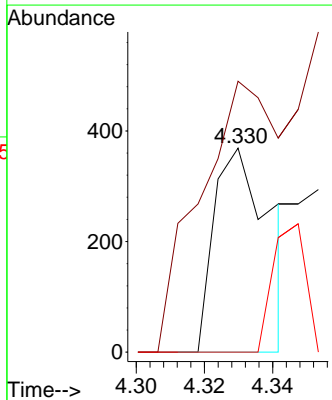
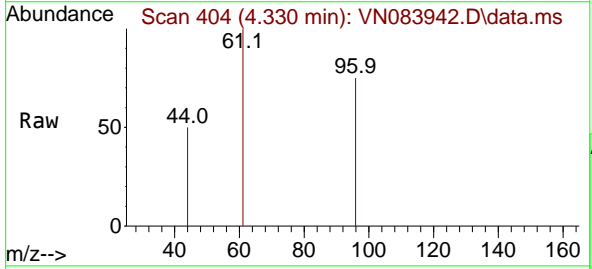
Instrument : MSVOA_N
 ClientSampleId : MW202D-20240909

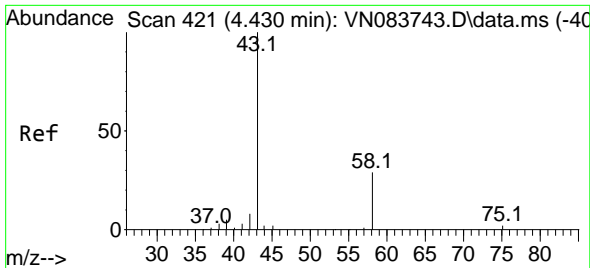
Tgt Ion:101 Resp: 3601
 Ion Ratio Lower Upper
 101 100
 103 61.4 51.4 77.0



#12
 1,1-Dichloroethene
 Concen: 0.232 ug/l
 RT: 4.330 min Scan# 404
 Delta R.T. -0.000 min
 Lab File: VN083942.D
 Acq: 17 Sep 2024 13:53

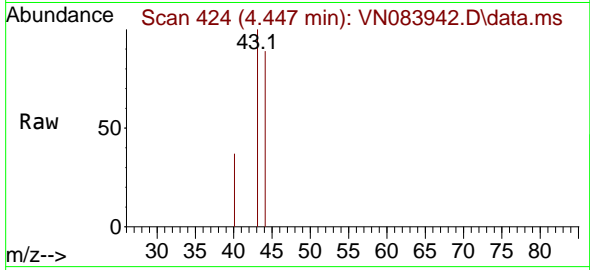
Tgt Ion: 96 Resp: 420
 Ion Ratio Lower Upper
 96 100
 61 69.6 143.4 215.0#
 98 0.0 52.7 79.1#



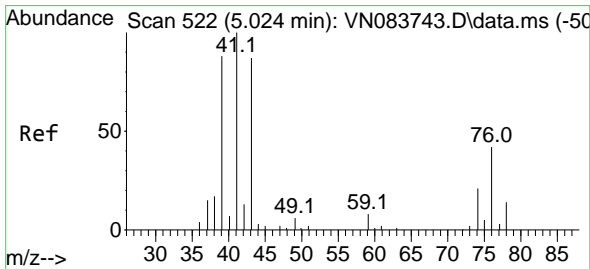
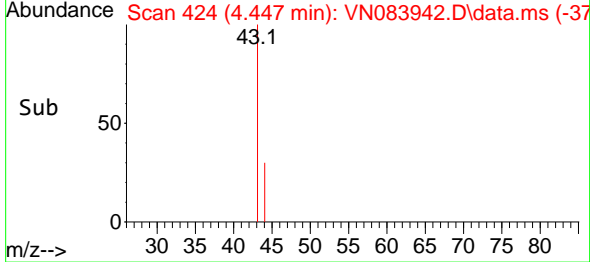
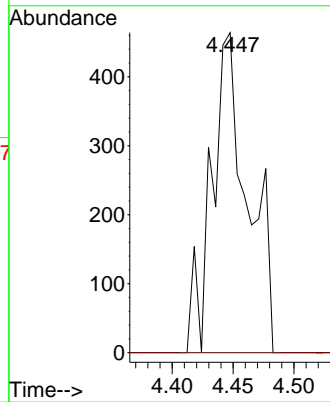


#16
 Acetone
 Concen: 0.944 ug/l
 RT: 4.447 min Scan# 41
 Delta R.T. 0.018 min
 Lab File: VN083942.D
 Acq: 17 Sep 2024 13:53

Instrument :
 MSVOA_N
 ClientSampleId :
 MW202D-20240909

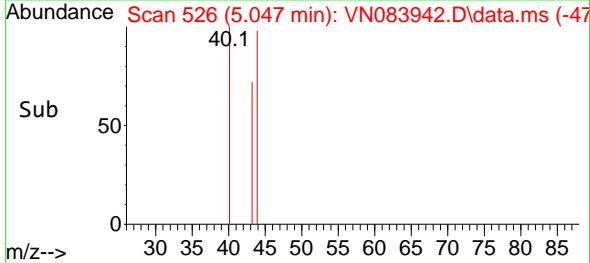
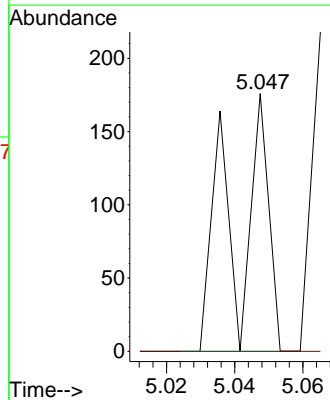
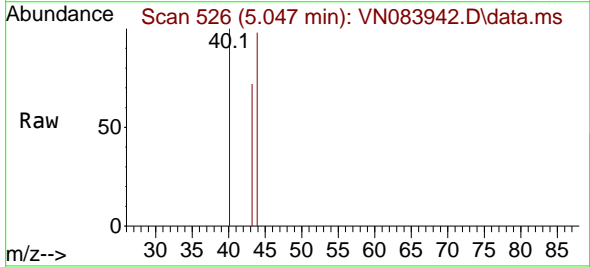


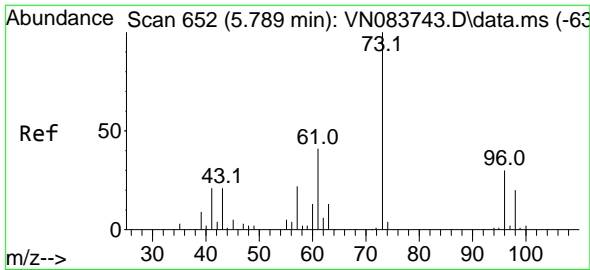
Tgt Ion: 43 Resp: 955
 Ion Ratio Lower Upper
 43 100
 58 0.0 23.7 35.5#



#18
 Methyl Acetate
 Concen: Below Cal
 RT: 5.047 min Scan# 526
 Delta R.T. 0.023 min
 Lab File: VN083942.D
 Acq: 17 Sep 2024 13:53

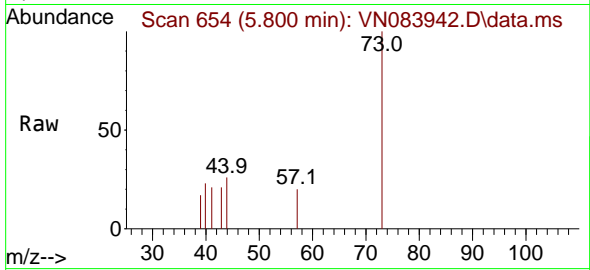
Tgt Ion: 43 Resp: 120
 Ion Ratio Lower Upper
 43 100
 74 0.0 19.0 28.4#



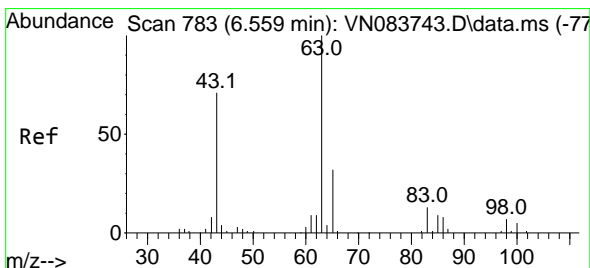
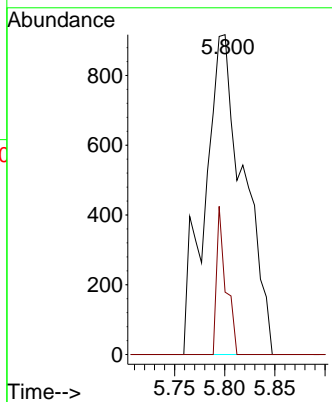
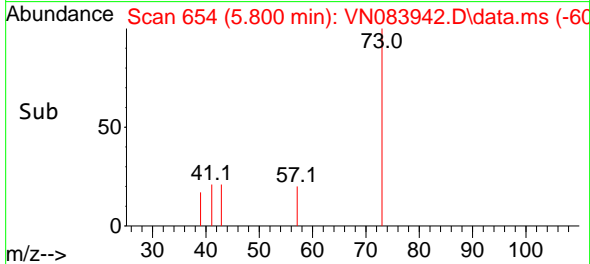


#19
 Methyl tert-butyl Ether
 Concen: 0.379 ug/l
 RT: 5.800 min Scan# 61
 Delta R.T. 0.012 min
 Lab File: VN083942.D
 Acq: 17 Sep 2024 13:53

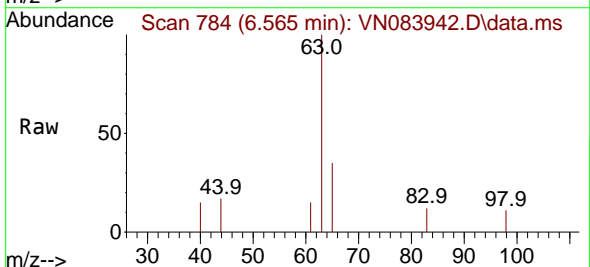
Instrument : MSVOA_N
 ClientSampleId : MW202D-20240909



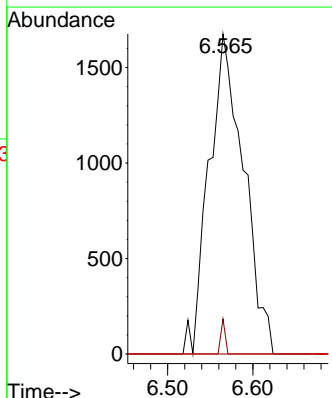
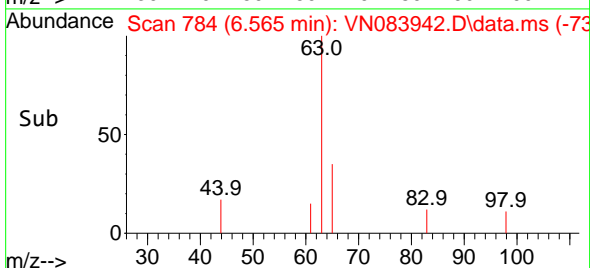
Tgt Ion: 73 Resp: 2483
 Ion Ratio Lower Upper
 73 100
 57 19.5 17.0 25.6

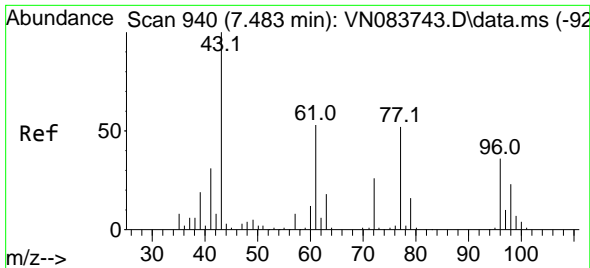


#24
 1,1-Dichloroethane
 Concen: 1.239 ug/l
 RT: 6.565 min Scan# 784
 Delta R.T. 0.006 min
 Lab File: VN083942.D
 Acq: 17 Sep 2024 13:53



Tgt Ion: 63 Resp: 4740
 Ion Ratio Lower Upper
 63 100
 98 11.0 3.5 10.4#
 100 0.0 2.5 7.5#

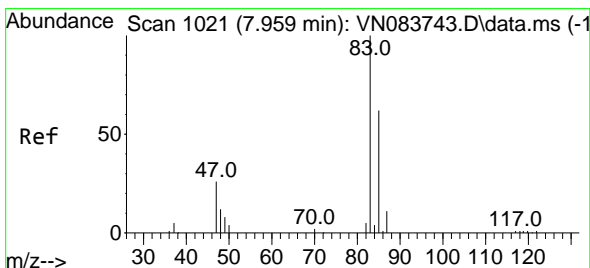
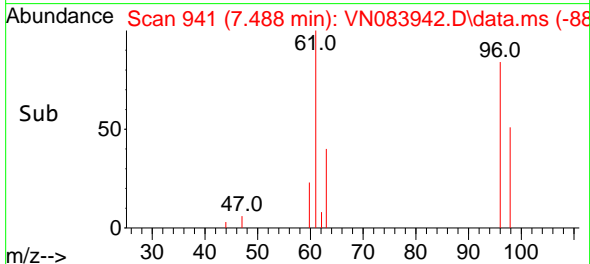
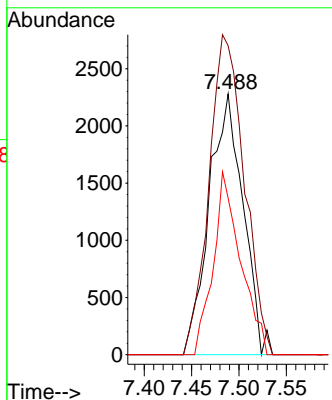
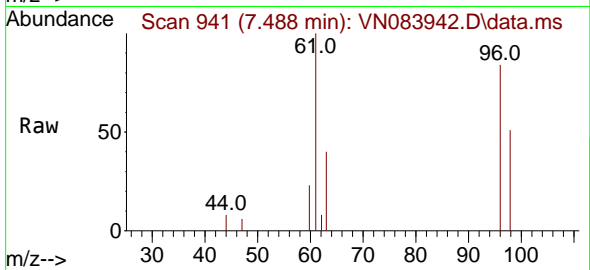




#27
 cis-1,2-Dichloroethene
 Concen: 2.474 ug/l
 RT: 7.488 min Scan# 940
 Delta R.T. 0.006 min
 Lab File: VN083942.D
 Acq: 17 Sep 2024 13:53

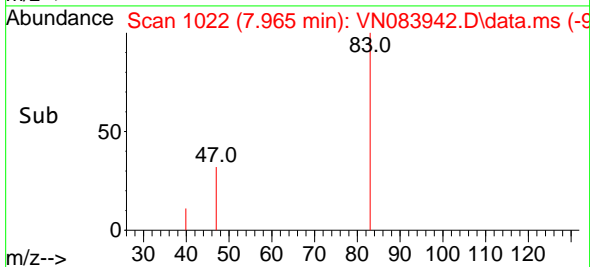
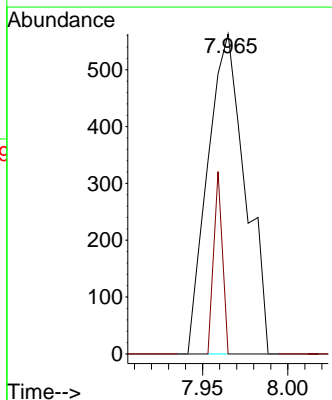
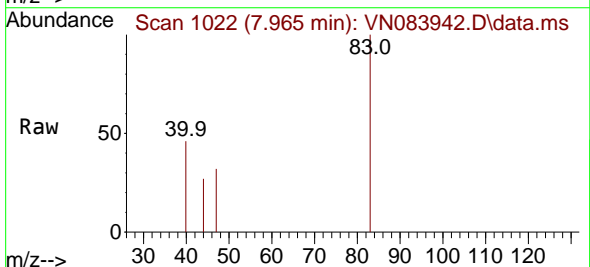
Instrument :
 MSVOA_N
 ClientSampleId :
 MW202D-20240909

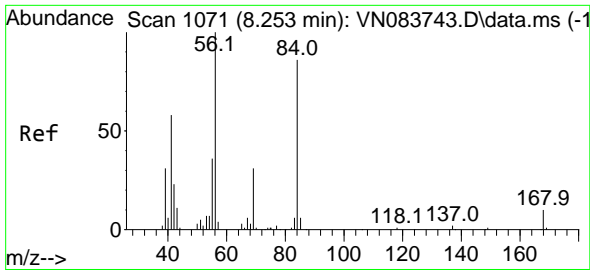
Tgt Ion: 96 Resp: 5697
 Ion Ratio Lower Upper
 96 100
 61 127.0 0.0 306.2
 98 56.4 0.0 128.6



#30
 Chloroform
 Concen: 0.213 ug/l
 RT: 7.965 min Scan# 1022
 Delta R.T. 0.006 min
 Lab File: VN083942.D
 Acq: 17 Sep 2024 13:53

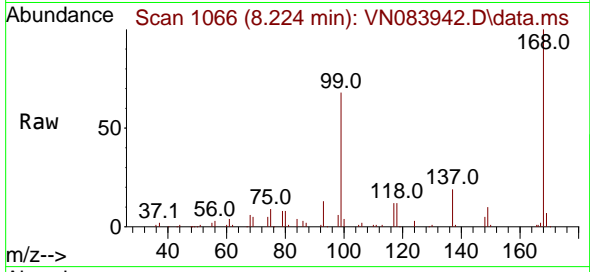
Tgt Ion: 83 Resp: 863
 Ion Ratio Lower Upper
 83 100
 85 0.0 52.8 79.2#



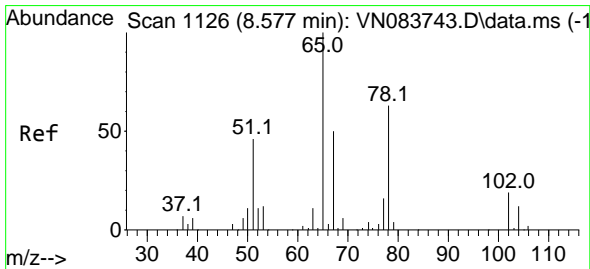
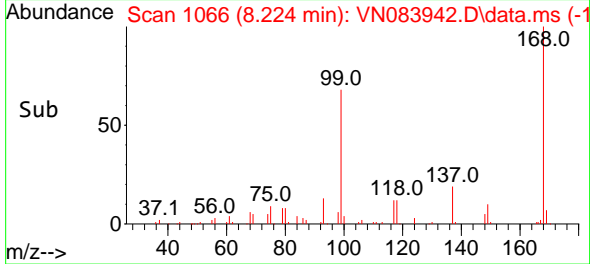
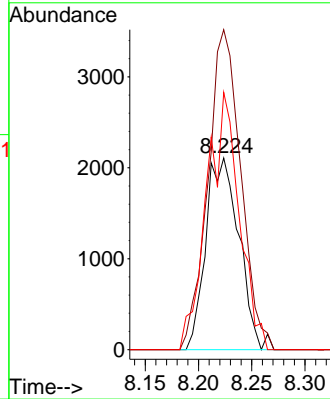


#31
 Cyclohexane
 Concen: 1.254 ug/l
 RT: 8.224 min Scan# 1066
 Delta R.T. -0.029 min
 Lab File: VN083942.D
 Acq: 17 Sep 2024 13:53

Instrument : MSVOA_N
 ClientSampleId : MW202D-20240909

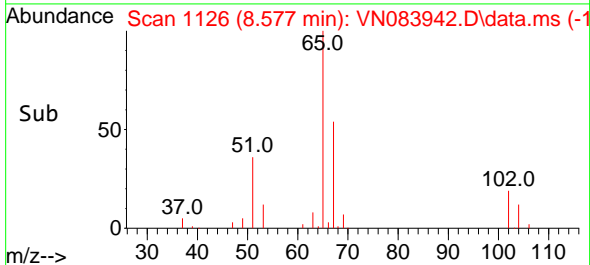
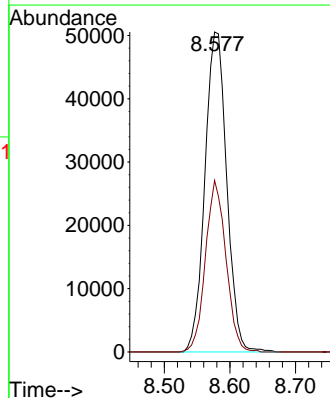
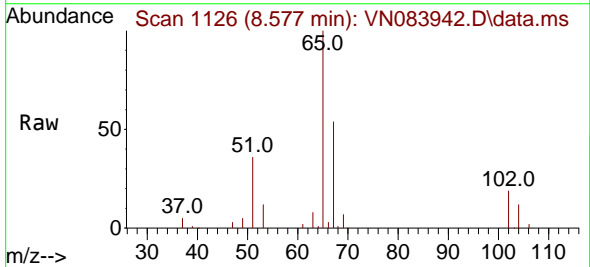


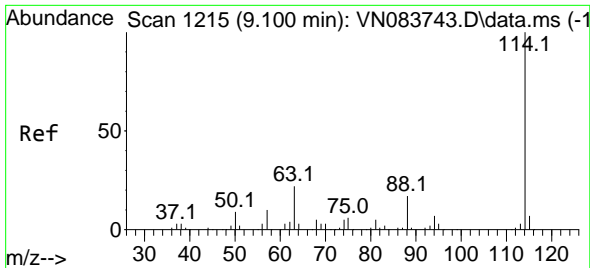
Tgt Ion: 56 Resp: 4573
 Ion Ratio Lower Upper
 56 100
 69 167.0 26.9 40.3#
 84 134.3 69.2 103.8#



#33
 1,2-Dichloroethane-d4
 Concen: 46.381 ug/l
 RT: 8.577 min Scan# 1126
 Delta R.T. -0.000 min
 Lab File: VN083942.D
 Acq: 17 Sep 2024 13:53

Tgt Ion: 65 Resp: 117022
 Ion Ratio Lower Upper
 65 100
 67 50.4 0.0 100.8

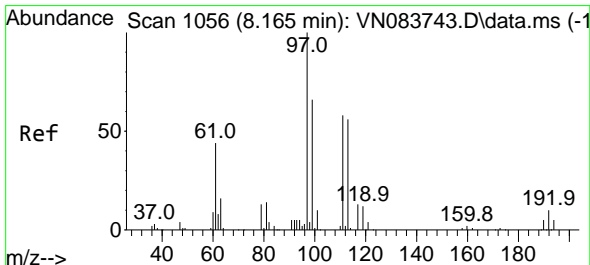
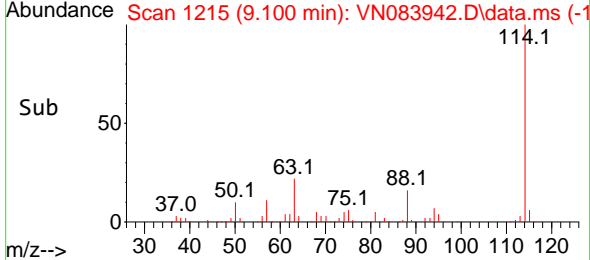
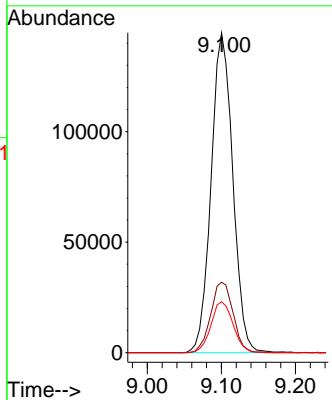
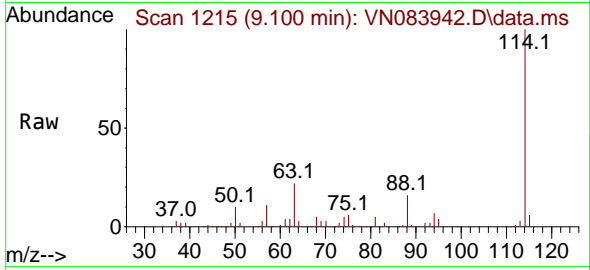




#34
 1,4-Difluorobenzene
 Concen: 50.000 ug/l
 RT: 9.100 min Scan# 11
 Delta R.T. -0.000 min
 Lab File: VN083942.D
 Acq: 17 Sep 2024 13:53

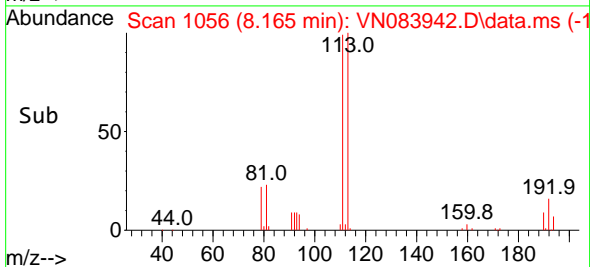
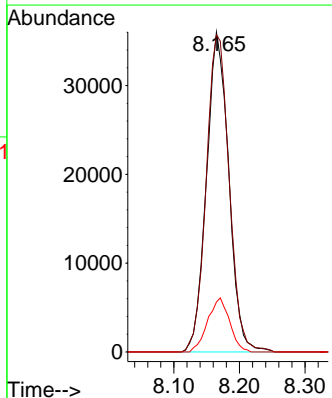
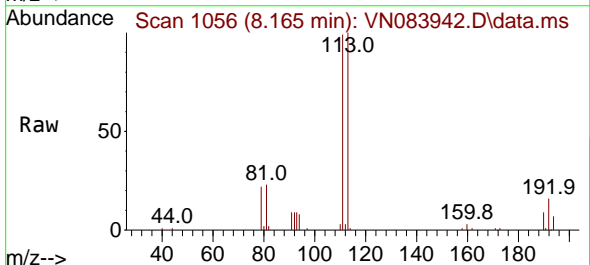
Instrument : MSVOA_N
 ClientSampleId : MW202D-20240909

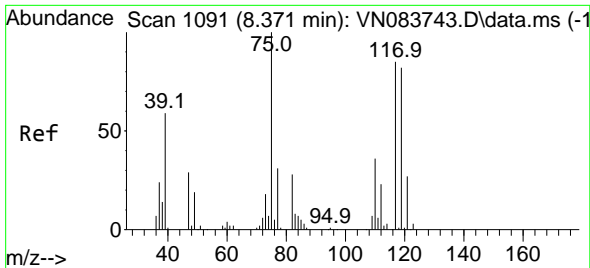
Tgt Ion	Resp	Lower	Upper
114	100		
63	22.0	0.0	43.4
88	15.9	0.0	32.6



#35
 Dibromofluoromethane
 Concen: 45.255 ug/l
 RT: 8.165 min Scan# 1056
 Delta R.T. -0.000 min
 Lab File: VN083942.D
 Acq: 17 Sep 2024 13:53

Tgt Ion	Resp	Lower	Upper
113	100		
111	101.9	82.6	124.0
192	16.6	14.3	21.5

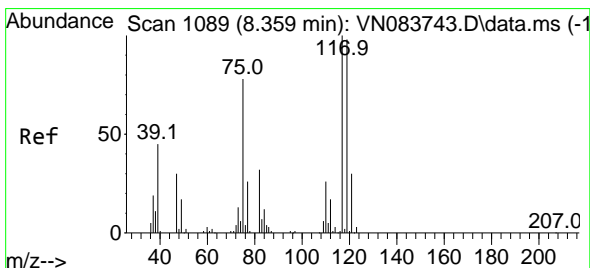
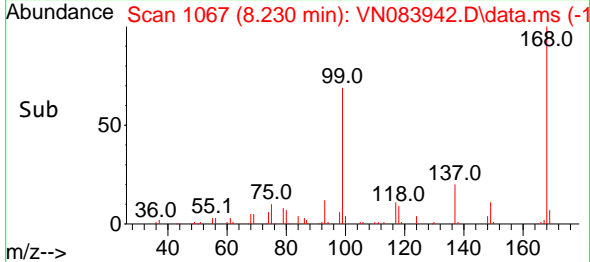
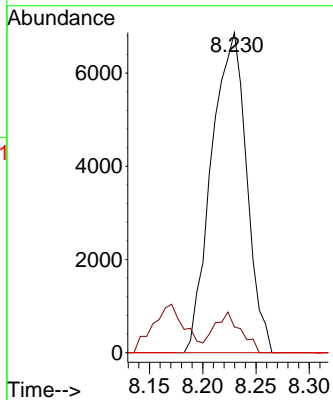
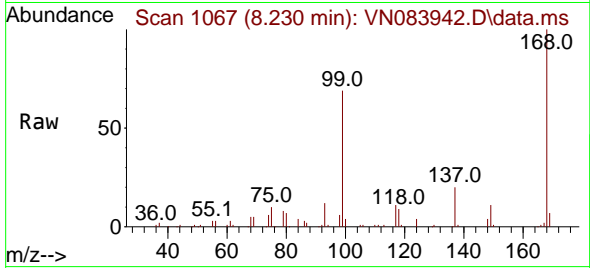




#36
 1,1-Dichloropropene
 Concen: 5.552 ug/l
 RT: 8.230 min Scan# 1067
 Delta R.T. -0.141 min
 Lab File: VN083942.D
 Acq: 17 Sep 2024 13:53

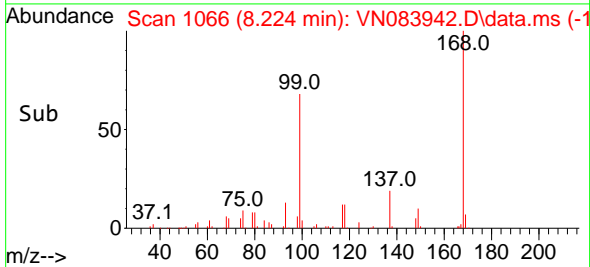
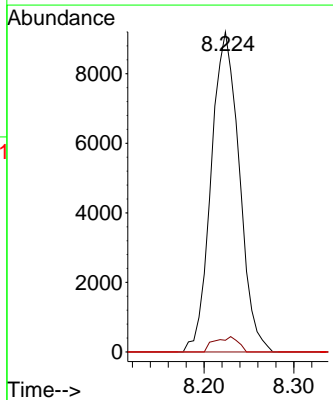
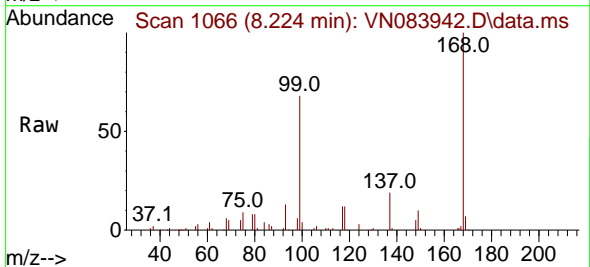
Instrument : MSVOA_N
 ClientSampleId : MW202D-20240909

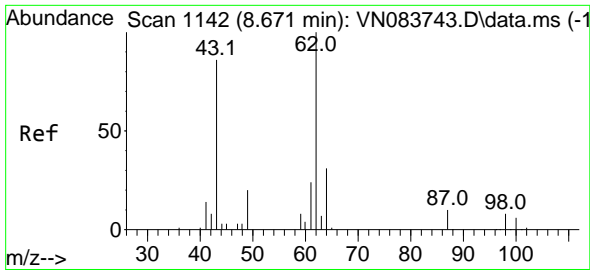
Tgt Ion	Resp	Lower	Upper
75	15718		
75	100		
110	9.4	16.7	50.1#
77	0.0	25.2	37.8#



#38
 Carbon Tetrachloride
 Concen: 6.242 ug/l
 RT: 8.224 min Scan# 1066
 Delta R.T. -0.135 min
 Lab File: VN083942.D
 Acq: 17 Sep 2024 13:53

Tgt Ion	Resp	Lower	Upper
117	20049		
117	100		
119	3.7	76.1	114.1#
121	0.0	24.1	36.1#

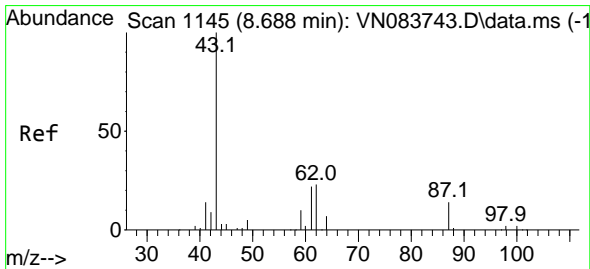
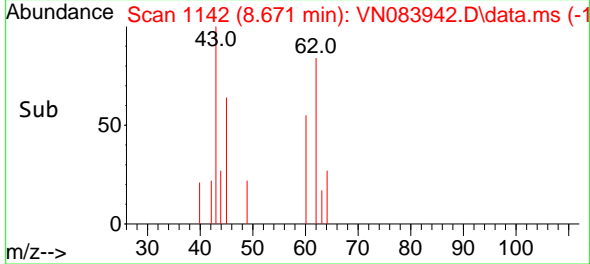
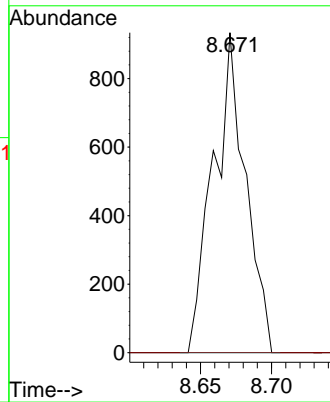
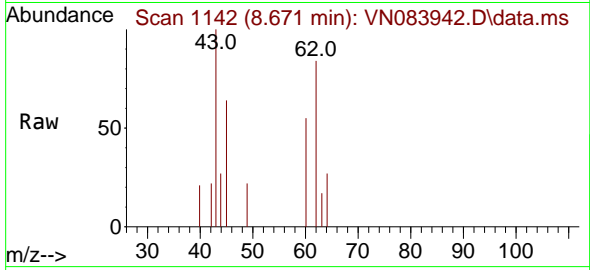




#42
 1,2-Dichloroethane
 Concen: 0.463 ug/l
 RT: 8.671 min Scan# 1142
 Delta R.T. -0.000 min
 Lab File: VN083942.D
 Acq: 17 Sep 2024 13:53

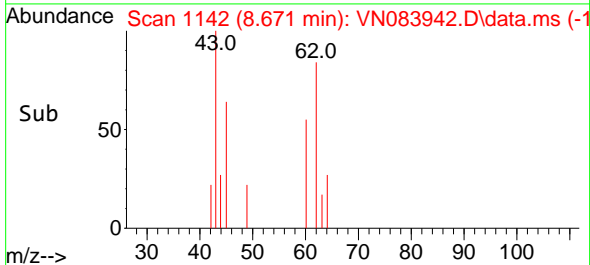
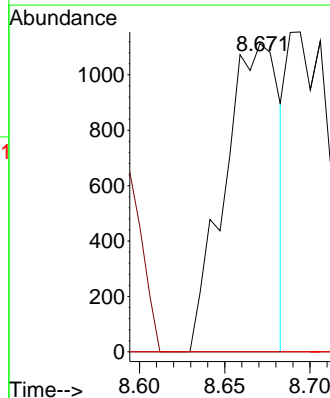
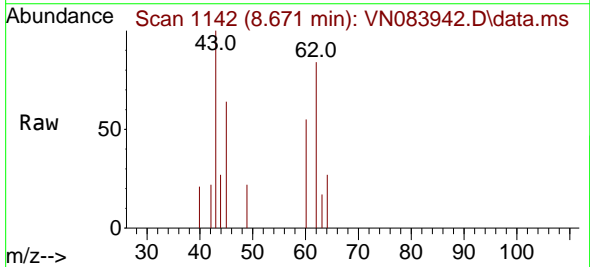
Instrument : MSVOA_N
 ClientSampleId : MW202D-20240909

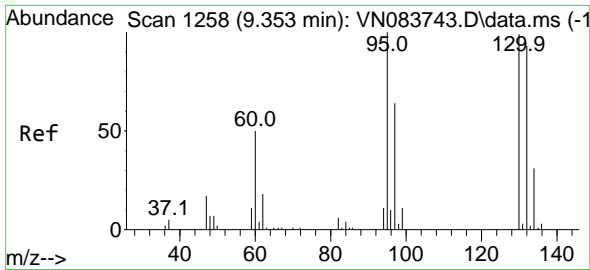
Tgt Ion: 62 Resp: 1474
 Ion Ratio Lower Upper
 62 100
 98 0.0 0.0 16.6



#43
 Isopropyl Acetate
 Concen: 0.532 ug/l
 RT: 8.671 min Scan# 1142
 Delta R.T. -0.018 min
 Lab File: VN083942.D
 Acq: 17 Sep 2024 13:53

Tgt Ion: 43 Resp: 2477
 Ion Ratio Lower Upper
 43 100
 61 0.0 19.4 29.0#
 87 0.0 9.8 14.6#

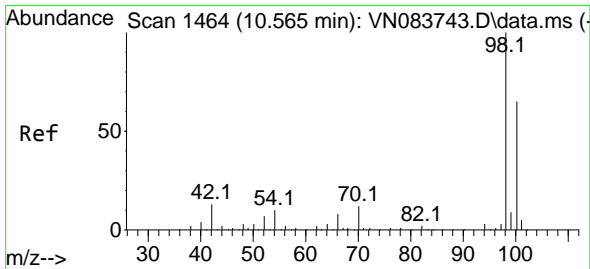
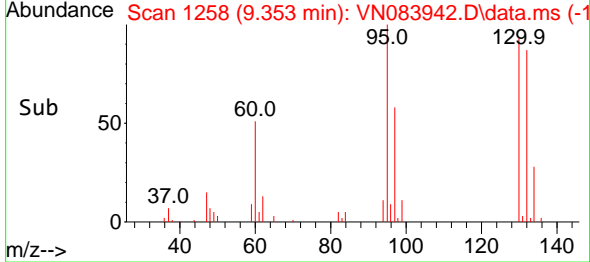
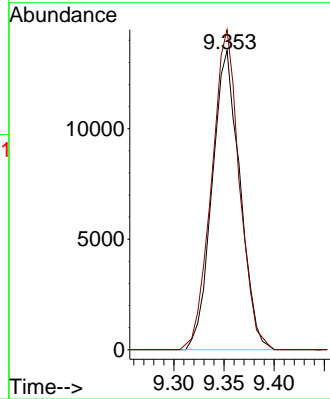
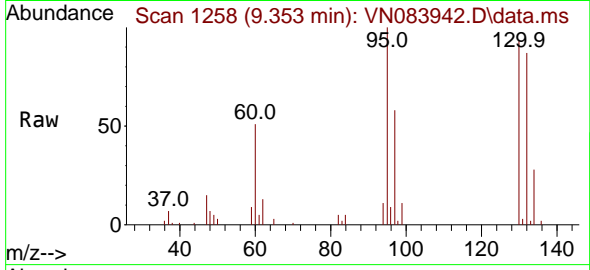




#44
 Trichloroethene
 Concen: 13.249 ug/l
 RT: 9.353 min Scan# 11
 Delta R.T. -0.000 min
 Lab File: VN083942.D
 Acq: 17 Sep 2024 13:53

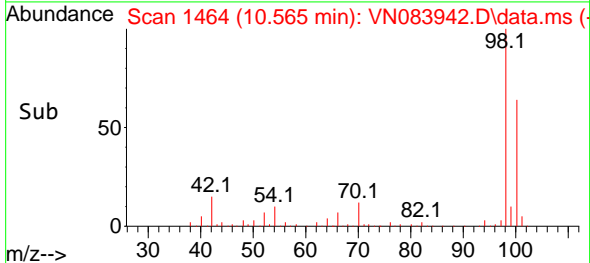
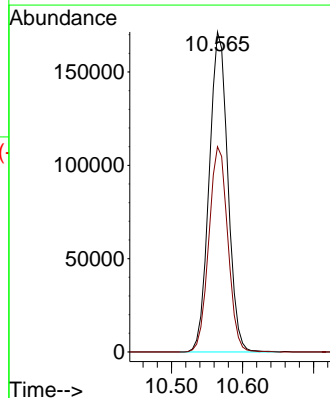
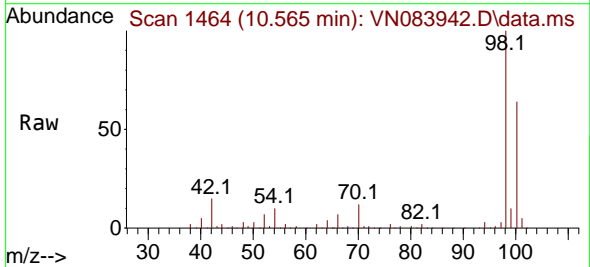
Instrument : MSVOA_N
 ClientSampleId : MW202D-20240909

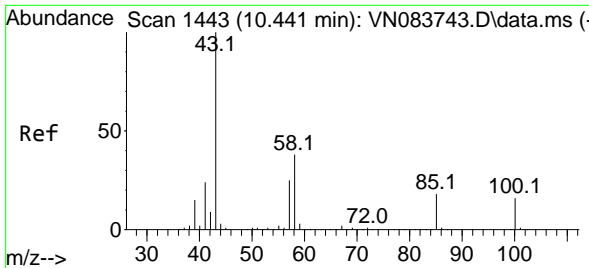
Tgt Ion:130 Resp: 26144
 Ion Ratio Lower Upper
 130 100
 95 107.0 0.0 200.4



#50
 Toluene-d8
 Concen: 48.054 ug/l
 RT: 10.565 min Scan# 1464
 Delta R.T. -0.000 min
 Lab File: VN083942.D
 Acq: 17 Sep 2024 13:53

Tgt Ion: 98 Resp: 312470
 Ion Ratio Lower Upper
 98 100
 100 65.2 52.0 78.0

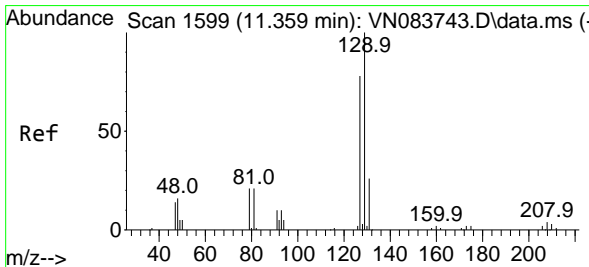
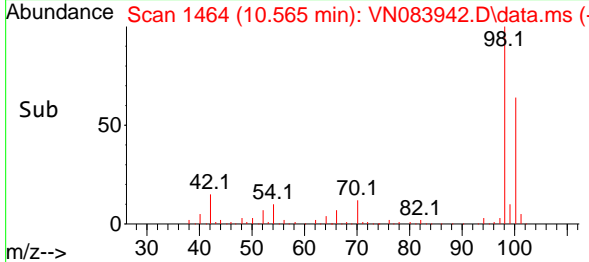
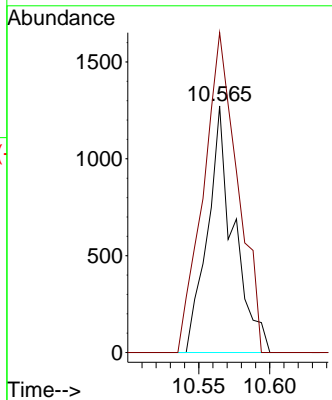
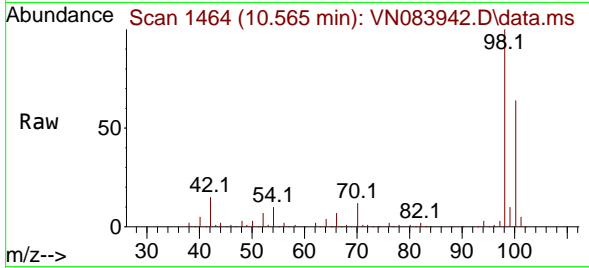




#51
 4-Methyl-2-Pentanone
 Concen: 0.645 ug/l
 RT: 10.565 min Scan# 14
 Delta R.T. 0.124 min
 Lab File: VN083942.D
 Acq: 17 Sep 2024 13:53

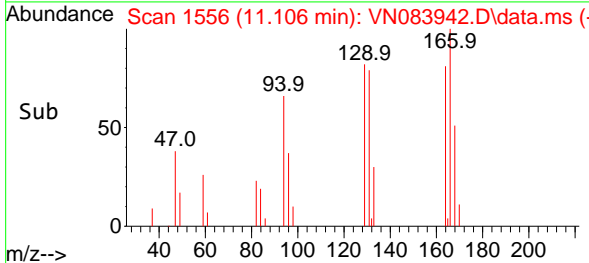
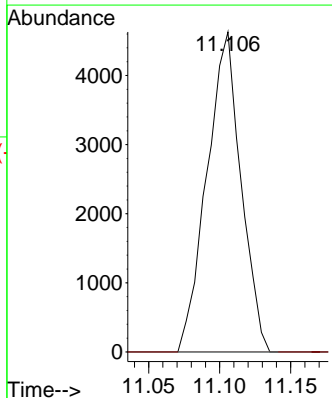
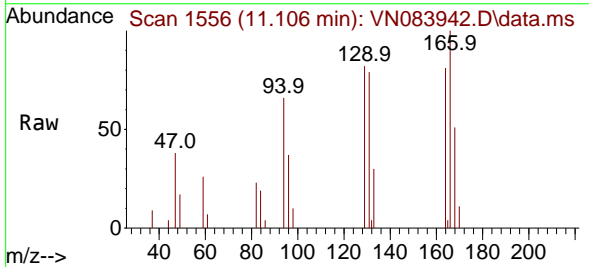
Instrument :
 MSVOA_N
 ClientSampleId :
 MW202D-20240909

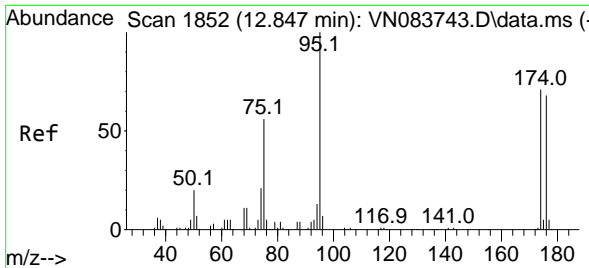
Tgt Ion: 43 Resp: 1634
 Ion Ratio Lower Upper
 43 100
 58 169.3 31.6 47.4#



#60
 Dibromochloromethane
 Concen: 3.549 ug/l
 RT: 11.106 min Scan# 1556
 Delta R.T. -0.253 min
 Lab File: VN083942.D
 Acq: 17 Sep 2024 13:53

Tgt Ion: 129 Resp: 7729
 Ion Ratio Lower Upper
 129 100
 127 0.0 39.0 116.9#



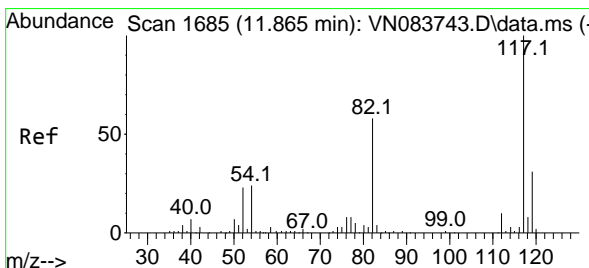
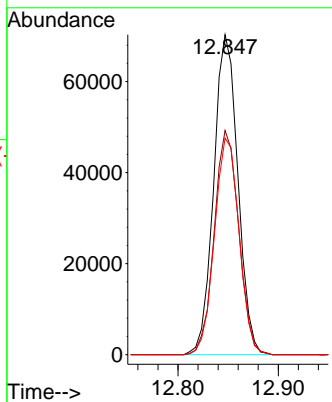
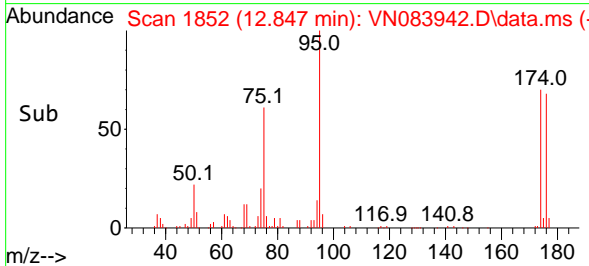
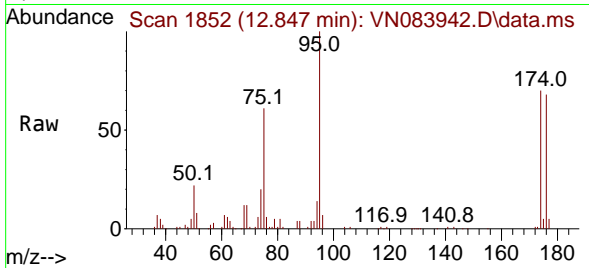


#62
 4-Bromofluorobenzene
 Concen: 43.684 ug/l
 RT: 12.847 min Scan# 1852
 Delta R.T. -0.000 min
 Lab File: VN083942.D
 Acq: 17 Sep 2024 13:53

Instrument : MSVOA_N
 ClientSampleId : MW202D-20240909

Tgt Ion: 95 Resp: 117194

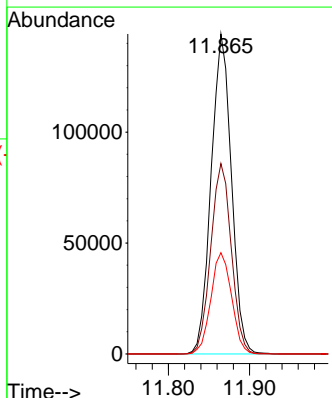
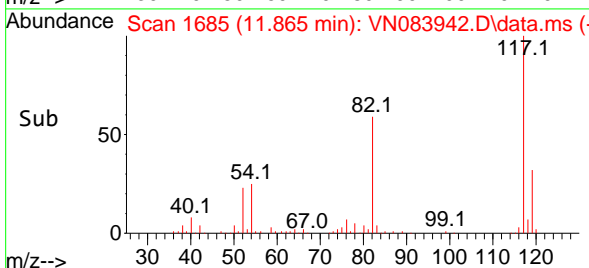
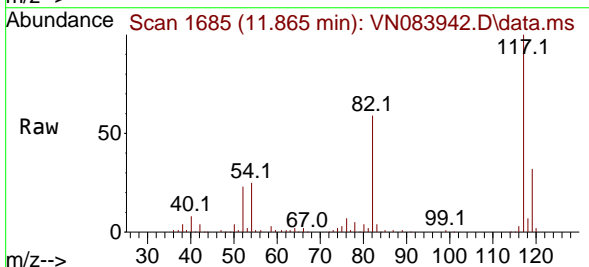
Ion	Ratio	Lower	Upper
95	100		
174	71.1	0.0	139.8
176	69.0	0.0	131.4

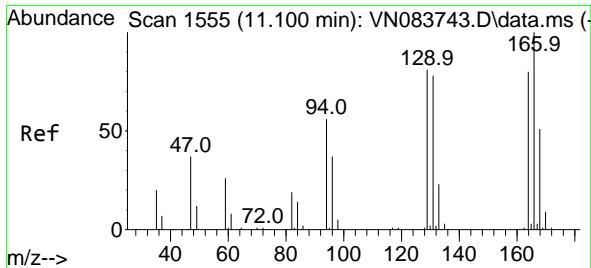


#63
 Chlorobenzene-d5
 Concen: 50.000 ug/l
 RT: 11.865 min Scan# 1685
 Delta R.T. -0.000 min
 Lab File: VN083942.D
 Acq: 17 Sep 2024 13:53

Tgt Ion: 117 Resp: 250330

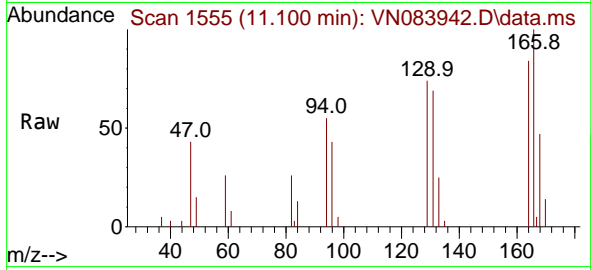
Ion	Ratio	Lower	Upper
117	100		
82	59.5	47.4	71.0
119	31.6	26.3	39.5



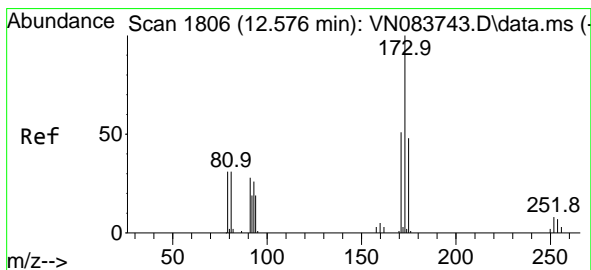
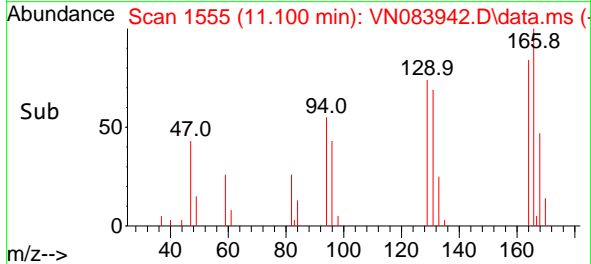
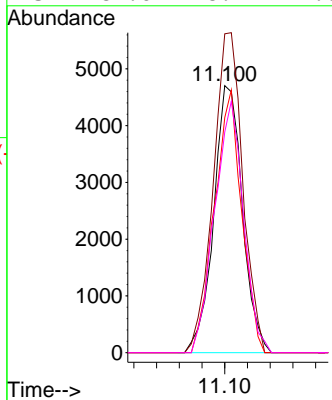


#64
 Tetrachloroethene
 Concen: 4.945 ug/l
 RT: 11.100 min Scan# 111
 Delta R.T. -0.000 min
 Lab File: VN083942.D
 Acq: 17 Sep 2024 13:53

Instrument : MSVOA_N
 ClientSampleId : MW202D-20240909

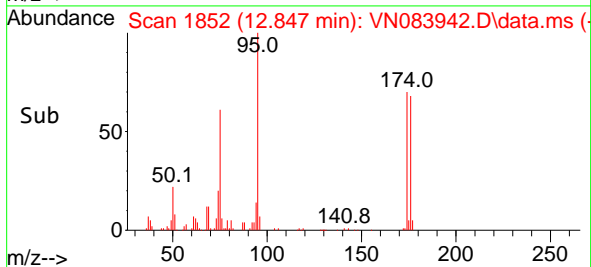
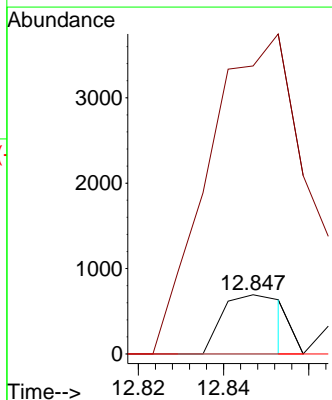
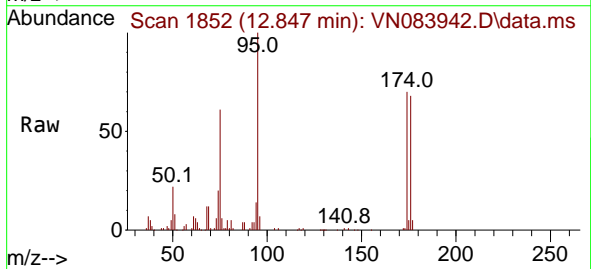


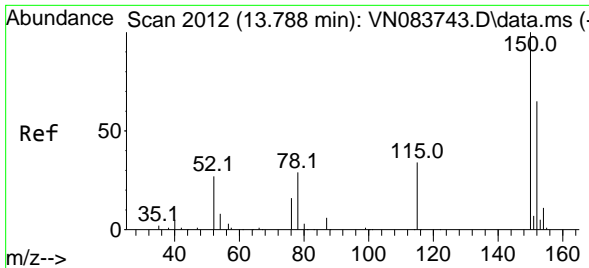
Tgt Ion:164 Resp: 8232
 Ion Ratio Lower Upper
 164 100
 166 119.4 103.7 155.5
 129 88.0 79.9 119.9
 131 82.6 78.4 117.6



#71
 Bromoform
 Concen: 0.529 ug/l
 RT: 12.847 min Scan# 1852
 Delta R.T. 0.271 min
 Lab File: VN083942.D
 Acq: 17 Sep 2024 13:53

Tgt Ion:173 Resp: 688
 Ion Ratio Lower Upper
 173 100
 175 0.0 24.1 72.2#
 254 0.0 0.0 0.0



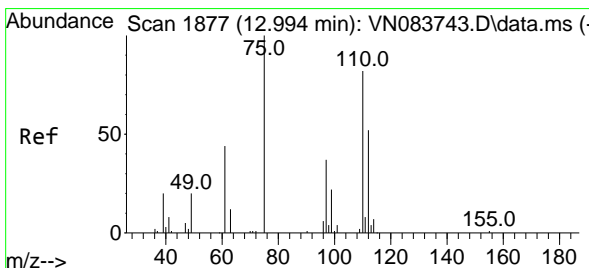
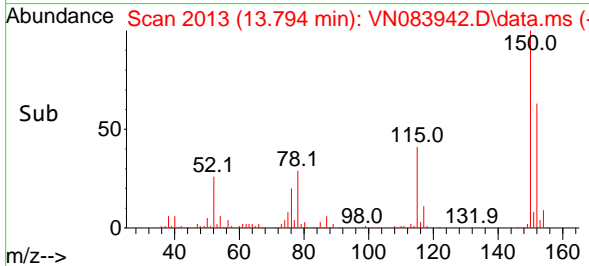
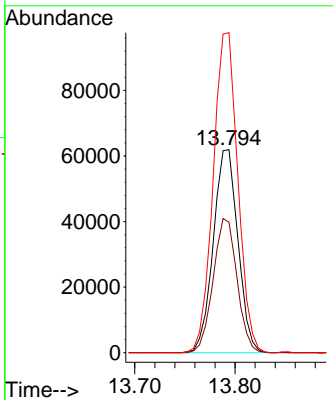
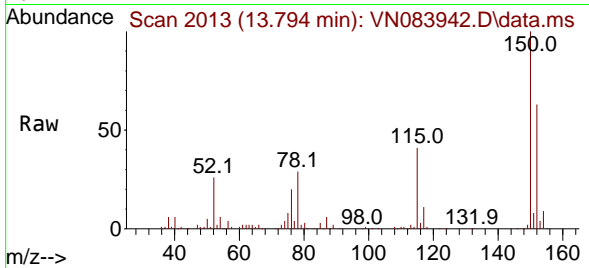


#72
 1,4-Dichlorobenzene-d4
 Concen: 50.000 ug/l
 RT: 13.794 min Scan# 2012
 Delta R.T. 0.006 min
 Lab File: VN083942.D
 Acq: 17 Sep 2024 13:53

Instrument : MSVOA_N
 ClientSampleId : MW202D-20240909

Tgt Ion:152 Resp: 105742

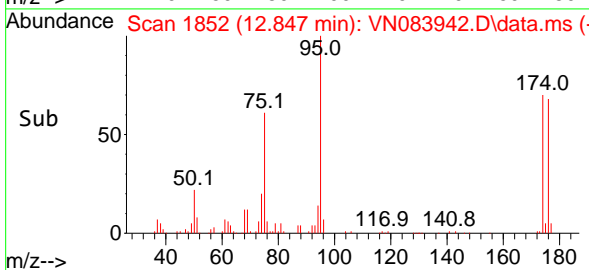
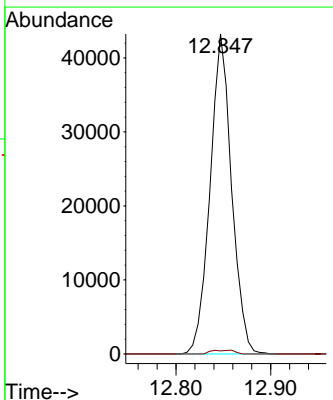
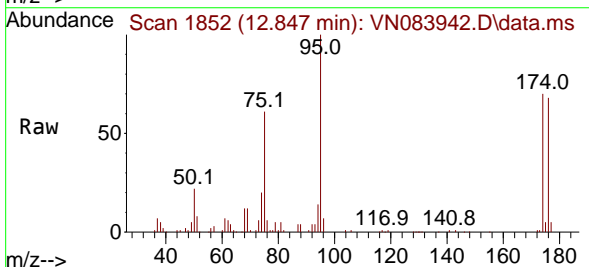
Ion	Ratio	Lower	Upper
152	100		
115	64.0	32.2	96.6
150	157.5	0.0	348.6

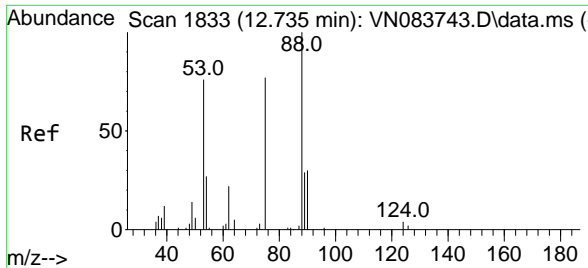


#76
 1,2,3-Trichloropropane
 Concen: 31.947 ug/l
 RT: 12.847 min Scan# 1852
 Delta R.T. -0.147 min
 Lab File: VN083942.D
 Acq: 17 Sep 2024 13:53

Tgt Ion: 75 Resp: 68165

Ion	Ratio	Lower	Upper
75	100		
77	1.3	95.2	285.6#





#81
 trans-1,4-Dichloro-2-butene
 Concen: 83.673 ug/l
 RT: 12.847 min Scan# 11
 Delta R.T. 0.112 min
 Lab File: VN083942.D
 Acq: 17 Sep 2024 13:53

Instrument :
 MSVOA_N
 ClientSampleId :
 MW202D-20240909

Tgt Ion: 75 Resp: 68165

Ion	Ratio	Lower	Upper
75	100		
53	0.0	81.2	121.8#
89	0.0	35.7	53.5#

