

Data Path : Z:\voasrv\HPCHEM1\MSVOA_N\Data\VN091824\
 Data File : VN084015.D
 Acq On : 19 Sep 2024 06:33
 Operator : JC\MD
 Sample : P4087-26
 Misc : 5.0mL/MSVOA_N/WATER
 ALS Vial : 45 Sample Multiplier: 1

Instrument :
 MSVOA_N
ClientSampleId :
 NB-614-COMP-05

Quant Time: Sep 19 07:03:21 2024
 Quant Method : Z:\voasrv\HPCHEM1\MSVOA_N\methods\82N091024W.M
 Quant Title : SW846 8260
 QLast Update : Wed Sep 11 15:18:56 2024
 Response via : Initial Calibration

Manual Integrations
APPROVED
 Reviewed By :John Carlone 09/19/2024
 Supervised By :Mahesh Dadoda 09/19/2024

Compound	R.T.	QIon	Response	Conc	Units	Dev(Min)
Internal Standards						
1) Pentafluorobenzene	8.224	168	169096	50.000	ug/l	0.00
34) 1,4-Difluorobenzene	9.100	114	298233	50.000	ug/l	0.00
63) Chlorobenzene-d5	11.865	117	257179	50.000	ug/l	0.00
72) 1,4-Dichlorobenzene-d4	13.788	152	103882	50.000	ug/l	0.00
System Monitoring Compounds						
33) 1,2-Dichloroethane-d4	8.577	65	132712	52.049	ug/l	0.00
Spiked Amount	50.000	Range 74 - 125	Recovery	=	104.100%	
35) Dibromofluoromethane	8.165	113	94270	49.375	ug/l	0.00
Spiked Amount	50.000	Range 75 - 124	Recovery	=	98.760%	
50) Toluene-d8	10.565	98	355555	53.869	ug/l	0.00
Spiked Amount	50.000	Range 86 - 113	Recovery	=	107.740%	
62) 4-Bromofluorobenzene	12.847	95	129453	47.538	ug/l	0.00
Spiked Amount	50.000	Range 77 - 121	Recovery	=	95.080%	
Target Compounds						
16) Acetone	4.430	43	31578	30.894	ug/l	94
20) Methylene Chloride	5.283	84	4450	2.128	ug/l	94
25) 2-Butanone	7.488	43	15620	11.627	ug/l	98
43) Isopropyl Acetate	8.682	43	229572m	48.567	ug/l	

(#) = qualifier out of range (m) = manual integration (+) = signals summed

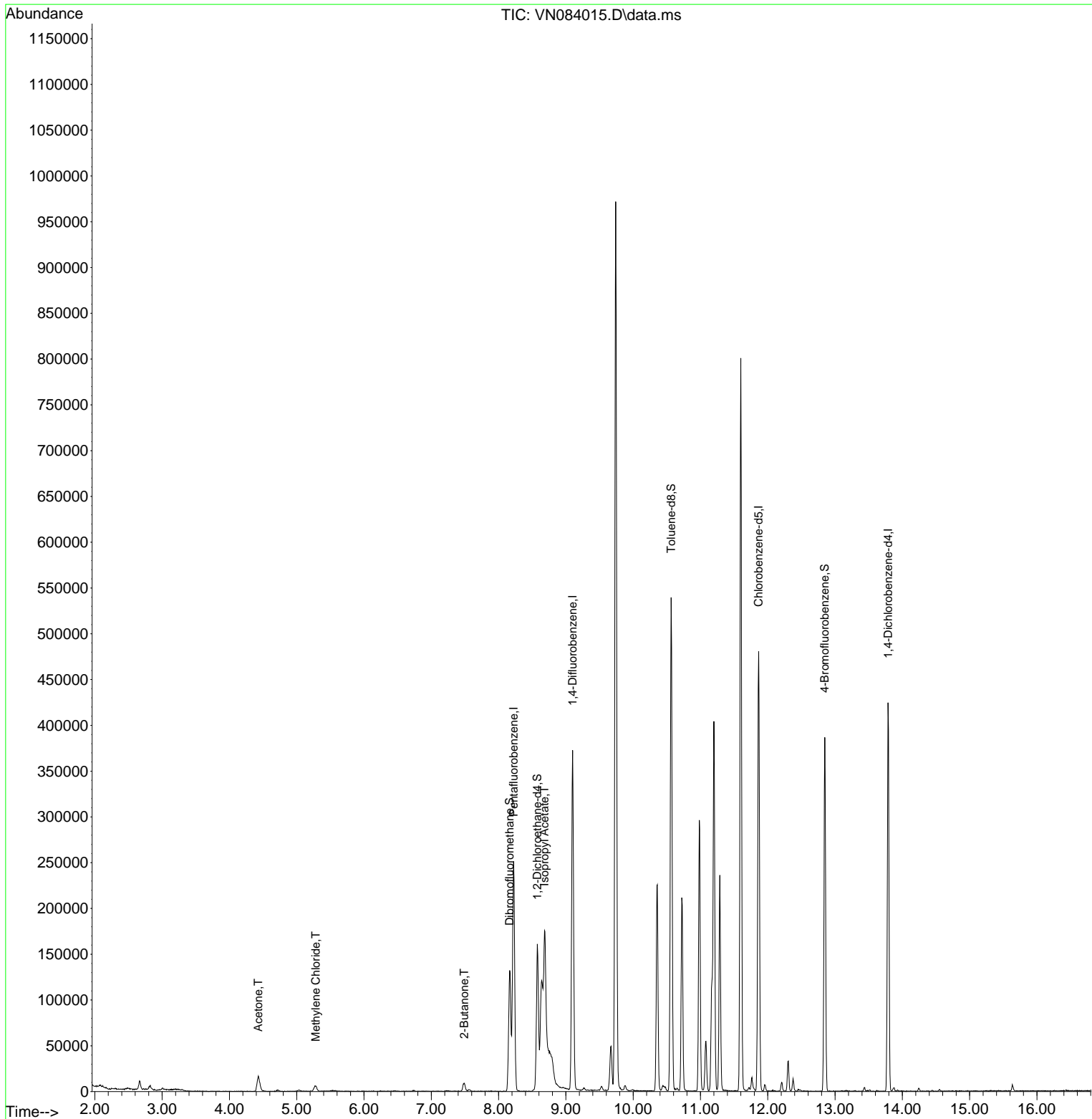
Data Path : Z:\voasrv\HPCHEM1\MSVOA_N\Data\VN091824\
 Data File : VN084015.D
 Acq On : 19 Sep 2024 06:33
 Operator : JC\MD
 Sample : P4087-26
 Misc : 5.0mL/MSVOA_N/WATER
 ALS Vial : 45 Sample Multiplier: 1

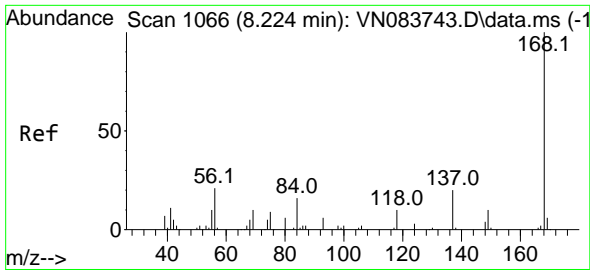
Instrument :
 MSVOA_N
ClientSampleId :
 NB-614-COMP-05

Manual Integrations
APPROVED

Reviewed By :John Carlone 09/19/2024
 Supervised By :Mahesh Dadoda 09/19/2024

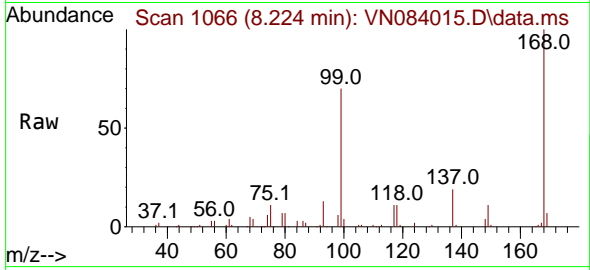
Quant Time: Sep 19 07:03:21 2024
 Quant Method : Z:\voasrv\HPCHEM1\MSVOA_N\methods\82N091024W.M
 Quant Title : SW846 8260
 QLast Update : Wed Sep 11 15:18:56 2024
 Response via : Initial Calibration





#1
 Pentafluorobenzene
 Concen: 50.000 ug/l
 RT: 8.224 min Scan# 1066
 Delta R.T. -0.000 min
 Lab File: VN084015.D
 Acq: 19 Sep 2024 06:33

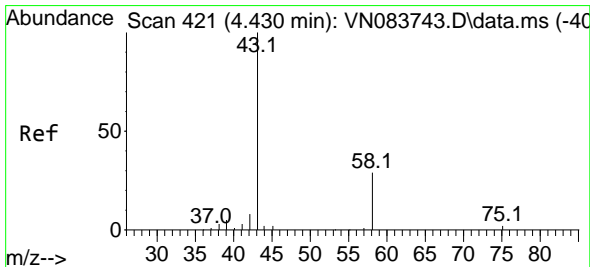
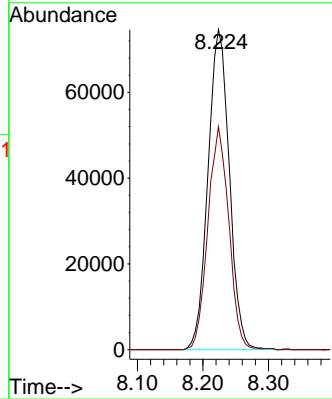
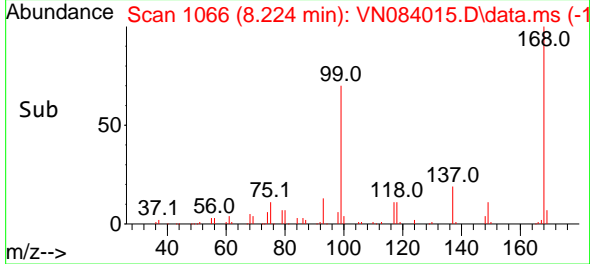
Instrument : MSVOA_N
 Client Sample Id : NB-614-COMP-05



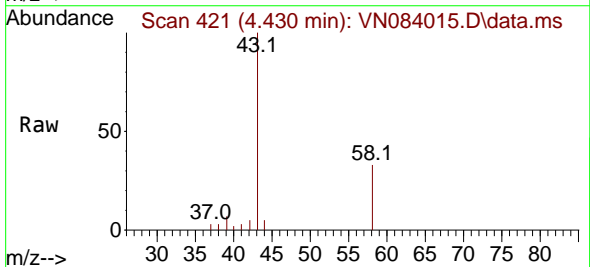
Tgt Ion: 168 Resp: 169090
 Ion Ratio Lower Upper
 168 100
 99 69.7 54.2 81.2

Manual Integrations
 APPROVED

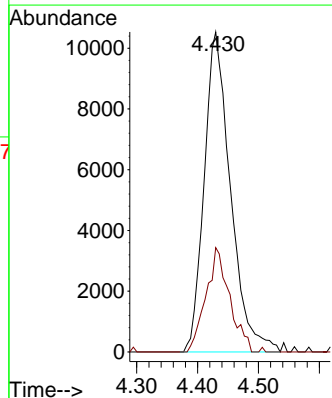
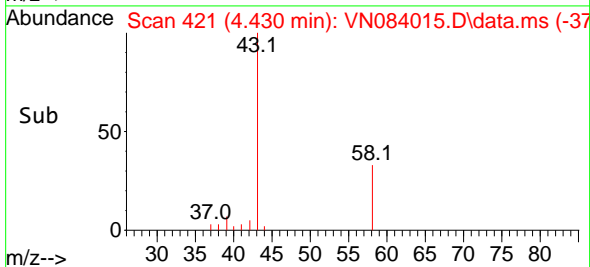
Reviewed By : John Carlone 09/19/2024
 Supervised By : Mahesh Dadoda 09/19/2024

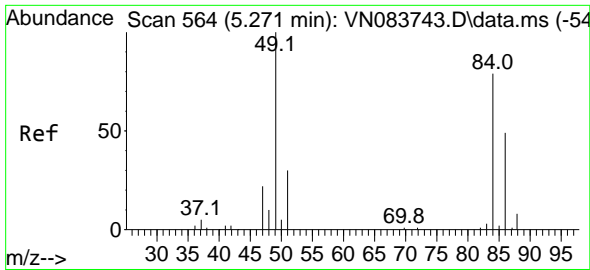


#16
 Acetone
 Concen: 30.894 ug/l
 RT: 4.430 min Scan# 421
 Delta R.T. -0.000 min
 Lab File: VN084015.D
 Acq: 19 Sep 2024 06:33



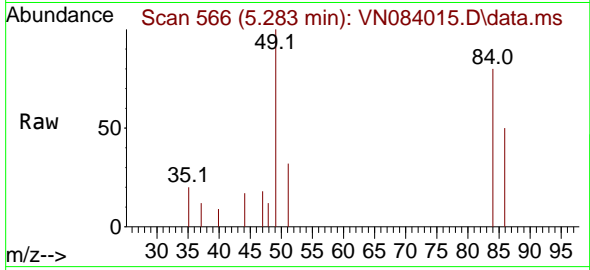
Tgt Ion: 43 Resp: 31578
 Ion Ratio Lower Upper
 43 100
 58 32.6 23.7 35.5





#20
 Methylene Chloride
 Concen: 2.128 ug/l
 RT: 5.283 min Scan# 501
 Delta R.T. 0.012 min
 Lab File: VN084015.D
 Acq: 19 Sep 2024 06:33

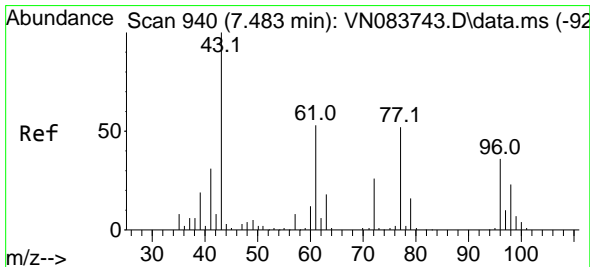
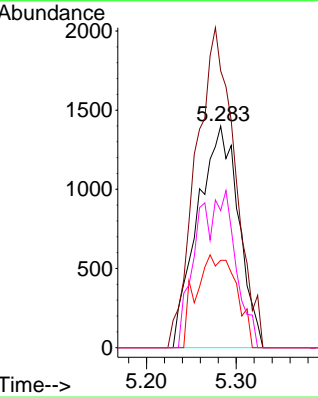
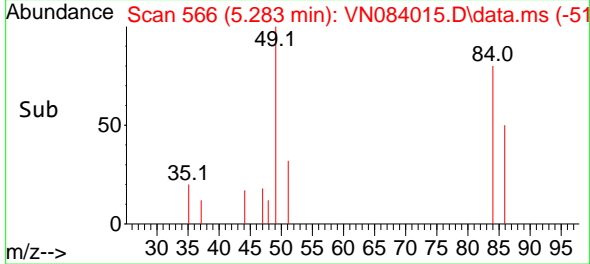
Instrument : MSVOA_N
 ClientSampleId : NB-614-COMP-05



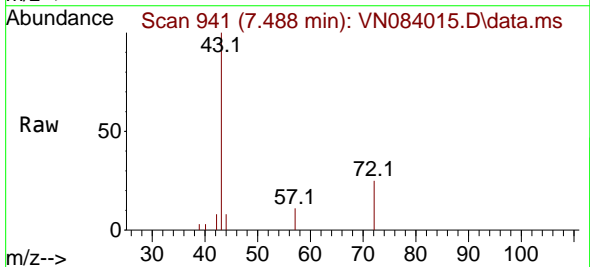
Tgt Ion: 84 Resp: 4450

Ion	Ratio	Lower	Upper
84	100		
49	124.9	93.4	140.0
51	39.5	29.2	43.8
86	61.9	46.9	70.3

Manual Integrations
APPROVED
 Reviewed By :John Carlone 09/19/2024
 Supervised By :Mahesh Dadoda 09/19/2024

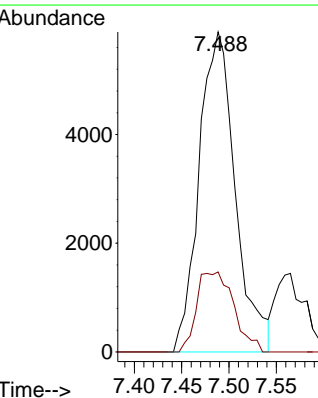
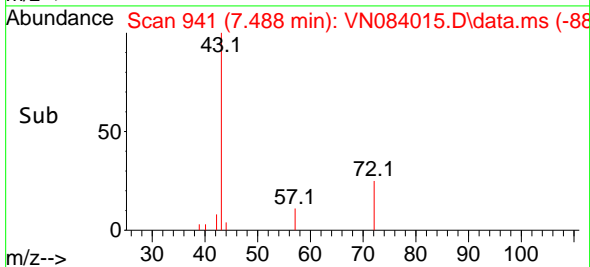


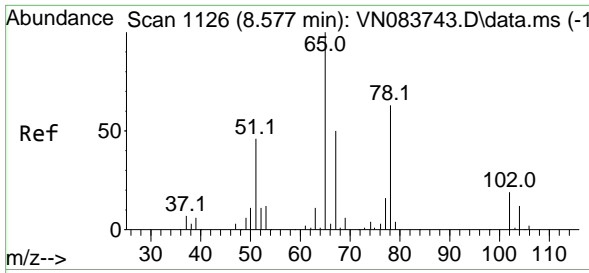
#25
 2-Butanone
 Concen: 11.627 ug/l
 RT: 7.488 min Scan# 941
 Delta R.T. 0.006 min
 Lab File: VN084015.D
 Acq: 19 Sep 2024 06:33



Tgt Ion: 43 Resp: 15620

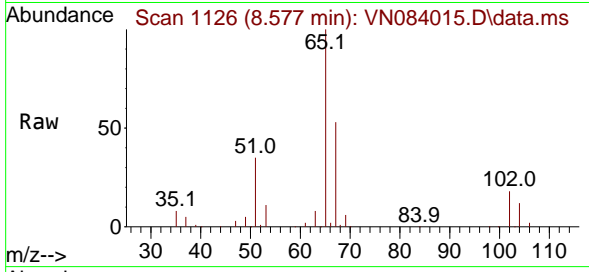
Ion	Ratio	Lower	Upper
43	100		
72	25.0	20.8	31.2





#33
 1,2-Dichloroethane-d4
 Concen: 52.049 ug/l
 RT: 8.577 min Scan# 1126
 Delta R.T. -0.000 min
 Lab File: VN084015.D
 Acq: 19 Sep 2024 06:33

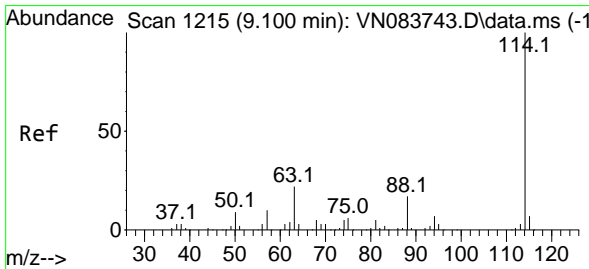
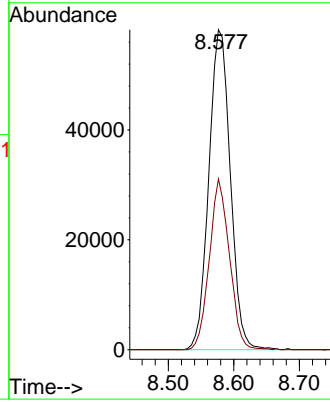
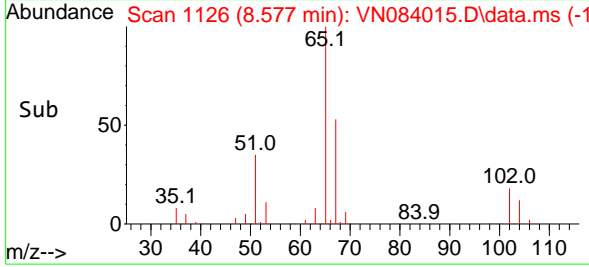
Instrument : MSVOA_N
 ClientSampleId : NB-614-COMP-05



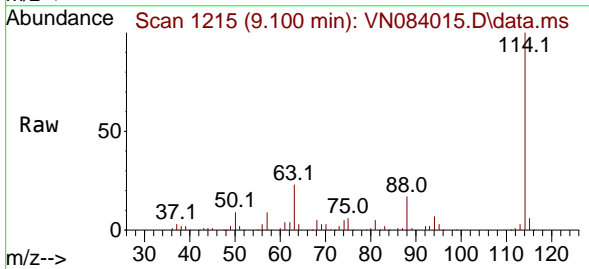
Tgt Ion: 65 Resp: 13271
 Ion Ratio Lower Upper
 65 100
 67 49.8 0.0 100.8

Manual Integrations
APPROVED

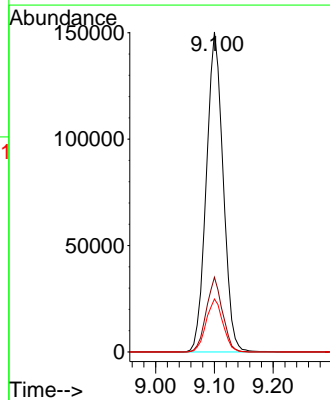
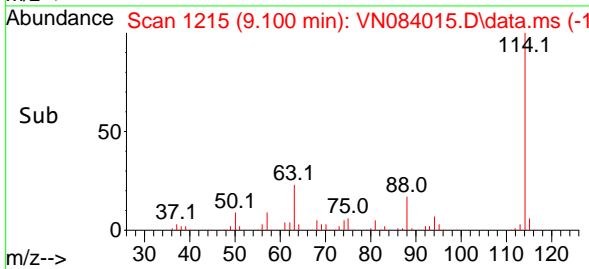
Reviewed By :John Carlone 09/19/2024
 Supervised By :Mahesh Dadoda 09/19/2024

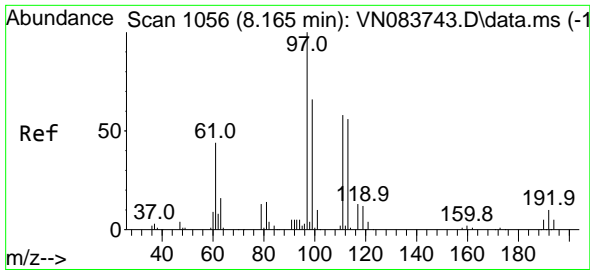


#34
 1,4-Difluorobenzene
 Concen: 50.000 ug/l
 RT: 9.100 min Scan# 1215
 Delta R.T. -0.000 min
 Lab File: VN084015.D
 Acq: 19 Sep 2024 06:33



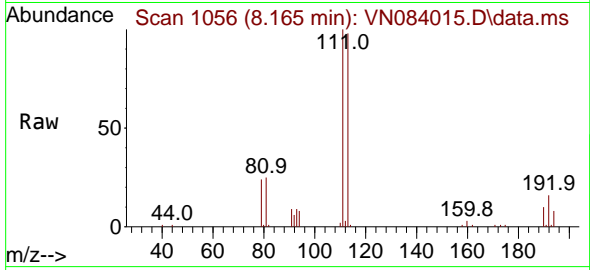
Tgt Ion:114 Resp: 298233
 Ion Ratio Lower Upper
 114 100
 63 23.3 0.0 43.4
 88 16.5 0.0 32.6





#35
 Dibromofluoromethane
 Concen: 49.375 ug/l
 RT: 8.165 min Scan# 1056
 Delta R.T. -0.000 min
 Lab File: VN084015.D
 Acq: 19 Sep 2024 06:33

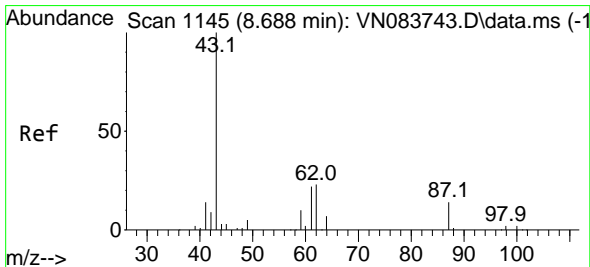
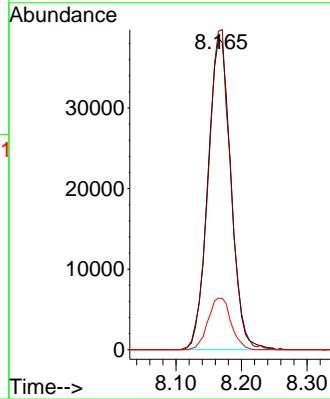
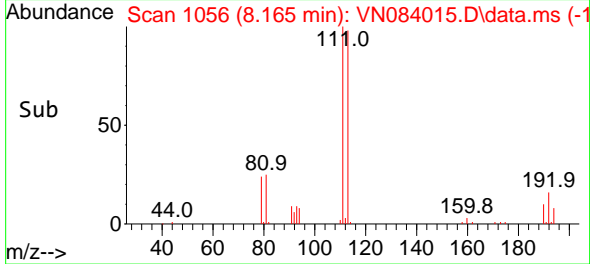
Instrument : MSVOA_N
 Client Sample Id : NB-614-COMP-05



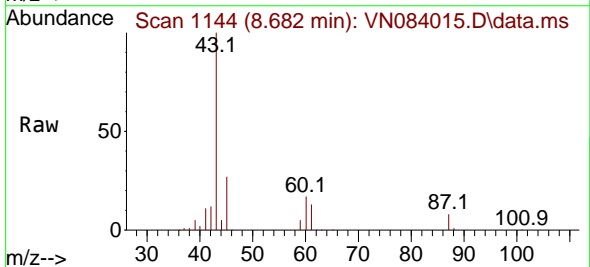
Tgt Ion: 113 Resp: 94270
 Ion Ratio Lower Upper
 113 100
 111 100.7 82.6 124.0
 192 16.5 14.3 21.5

Manual Integrations
APPROVED

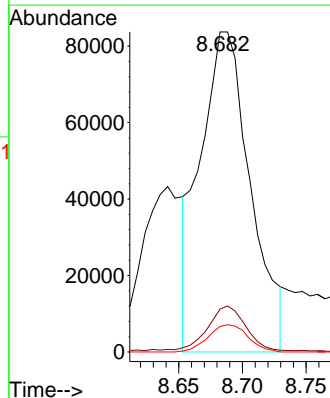
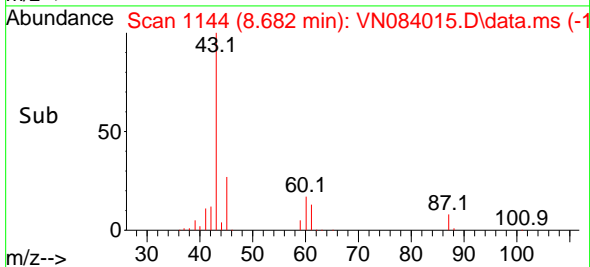
Reviewed By : John Carlone 09/19/2024
 Supervised By : Mahesh Dadoda 09/19/2024

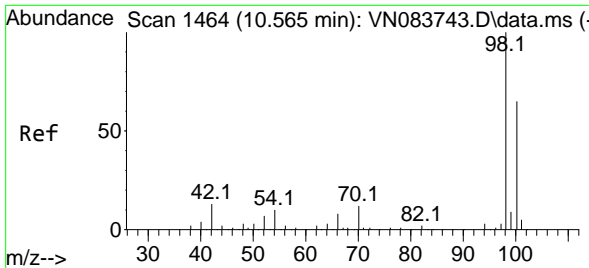


#43
 Isopropyl Acetate
 Concen: 48.567 ug/l m
 RT: 8.682 min Scan# 1144
 Delta R.T. -0.006 min
 Lab File: VN084015.D
 Acq: 19 Sep 2024 06:33



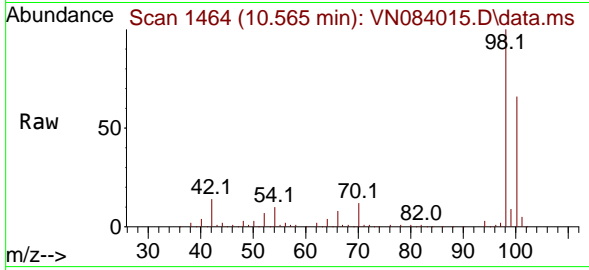
Tgt Ion: 43 Resp: 229572
 Ion Ratio Lower Upper
 43 100
 61 11.9 19.4 29.0#
 87 6.7 9.8 14.6#





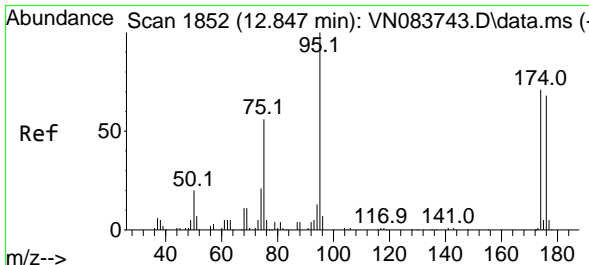
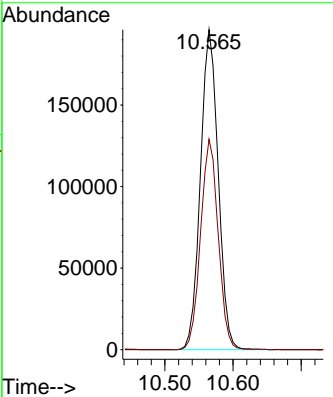
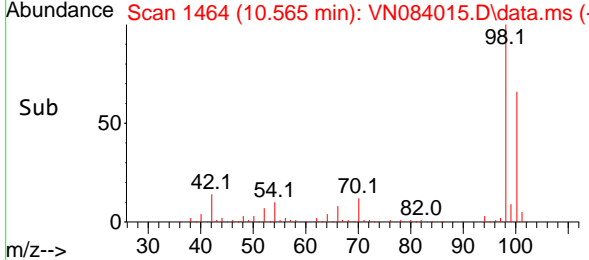
#50
 Toluene-d8
 Concen: 53.869 ug/l
 RT: 10.565 min Scan# 1464
 Delta R.T. -0.000 min
 Lab File: VN084015.D
 Acq: 19 Sep 2024 06:33

Instrument :
 MSVOA_N
ClientSampleId :
 NB-614-COMP-05

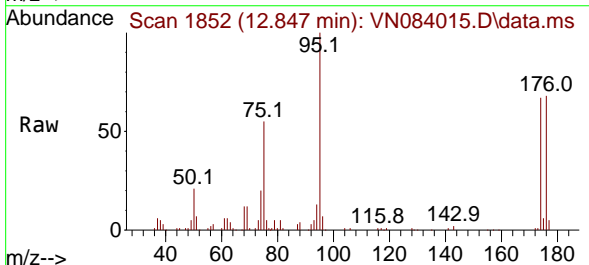


Tgt Ion: 98 Resp: 35555
 Ion Ratio Lower Upper
 98 100
 100 65.3 52.0 78.0

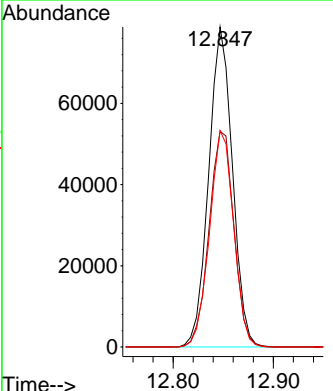
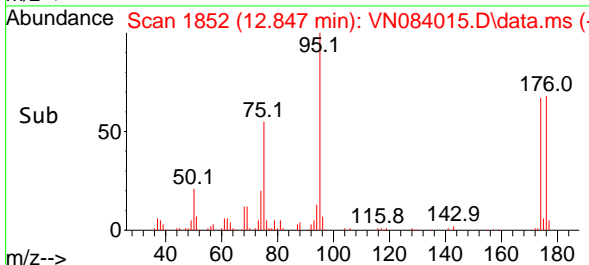
Manual Integrations
APPROVED
 Reviewed By :John Carlone 09/19/2024
 Supervised By :Mahesh Dadoda 09/19/2024

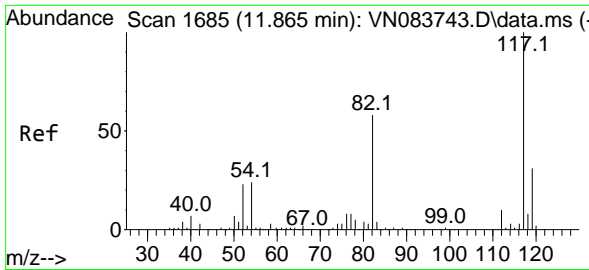


#62
 4-Bromofluorobenzene
 Concen: 47.538 ug/l
 RT: 12.847 min Scan# 1852
 Delta R.T. -0.000 min
 Lab File: VN084015.D
 Acq: 19 Sep 2024 06:33



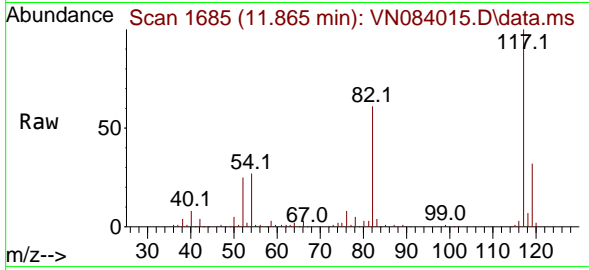
Tgt Ion: 95 Resp: 129453
 Ion Ratio Lower Upper
 95 100
 174 70.7 0.0 139.8
 176 68.5 0.0 131.4





#63
 Chlorobenzene-d5
 Concen: 50.000 ug/l
 RT: 11.865 min Scan# 10
 Delta R.T. -0.000 min
 Lab File: VN084015.D
 Acq: 19 Sep 2024 06:33

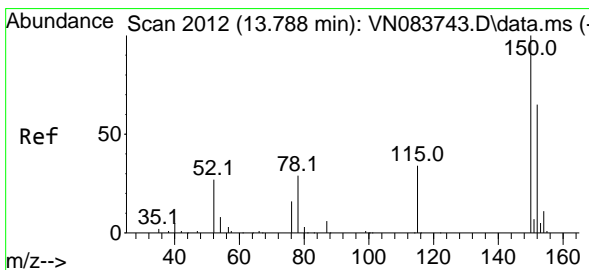
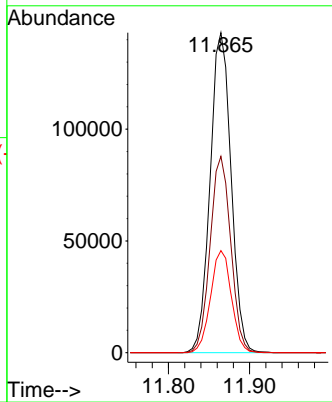
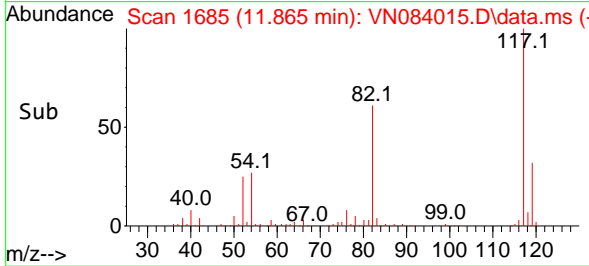
Instrument :
 MSVOA_N
ClientSampleId :
 NB-614-COMP-05



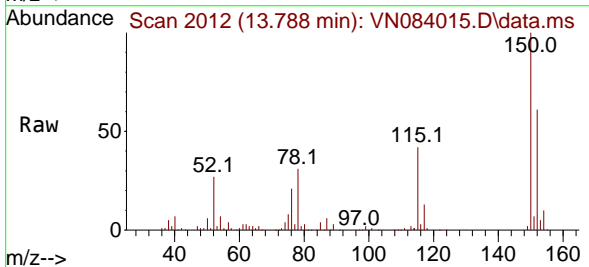
Tgt Ion:117 Resp: 257179
 Ion Ratio Lower Upper
 117 100
 82 61.3 47.4 71.0
 119 31.9 26.3 39.5

Manual Integrations
APPROVED

Reviewed By :John Carlone 09/19/2024
 Supervised By :Mahesh Dadoda 09/19/2024



#72
 1,4-Dichlorobenzene-d4
 Concen: 50.000 ug/l
 RT: 13.788 min Scan# 2012
 Delta R.T. -0.000 min
 Lab File: VN084015.D
 Acq: 19 Sep 2024 06:33



Tgt Ion:152 Resp: 103882
 Ion Ratio Lower Upper
 152 100
 115 65.4 32.2 96.6
 150 158.6 0.0 348.6

