

Data Path : Z:\voasrv\HPCHEM1\MSVOA\_N\Data\VN091923\  
 Data File : VN079297.D  
 Acq On : 19 Sep 2023 11:00  
 Operator : JC/MD  
 Sample : VSTDCCC020  
 Misc : 5.0mL/MSVOA\_N/WATER  
 ALS Vial : 2 Sample Multiplier: 1

Instrument :  
 MSVOA\_N  
 ClientSampleId :

Quant Time: Sep 19 15:40:18 2023  
 Quant Method : Z:\voasrv\HPCHEM1\MSVOA\_N\methods\624N090723W.M  
 Quant Title : METHOD 624 VOLATILE ORGANIC ANALYSIS  
 QLast Update : Fri Sep 08 05:09:17 2023  
 Response via : Initial Calibration

Compound	R.T.	QIon	Response	Conc	Units	Dev(Min)
Internal Standards						
1) Bromochloromethane	7.818	128	38831	30.000	ug/l	0.00
28) 1,4-Difluorobenzene	9.106	114	202403	30.000	ug/l	0.00
57) Chlorobenzene-d5	11.870	117	188071	30.000	ug/l	0.00
System Monitoring Compounds						
27) 1,2-Dichloroethane-d4	8.582	65	102147	35.013	ug/l	0.00
Spiked Amount	30.000	Range 91 - 110	Recovery	=	116.700%#	
60) 4-Bromofluorobenzene	12.853	95	86023	31.043	ug/l	0.00
Spiked Amount	30.000	Range 63 - 112	Recovery	=	103.467%	
63) Toluene-d8	10.571	98	278603	31.698	ug/l	0.00
Spiked Amount	30.000	Range 91 - 112	Recovery	=	105.667%	
Target Compounds						
						Qvalue
2) Dichlorodifluoromethane	2.130	85	42906	19.812	ug/l	99
3) Chloromethane	2.365	50	51816	23.861	ug/l #	83
4) Vinyl Chloride	2.518	62	57384	26.709	ug/l	95
5) Bromomethane	2.953	94	31662	24.011	ug/l	93
6) Chloroethane	3.124	64	41626	31.635	ug/l #	87
7) Trichlorofluoromethane	3.500	101	79550	31.100	ug/l	98
8) Diethyl Ether	3.965	74	26077	27.805	ug/l	92
9) 1,1,2-Trichlorotrifluo...	4.377	101	43790	31.066	ug/l	94
10) 1,1-Dichloroethene	4.342	96	40784	29.861	ug/l	94
11) Methyl Iodide	4.589	142	43970	25.557	ug/l	98
12) Methyl Acetate	5.036	43	88437	27.785	ug/l	99
13) Acrolein	4.183	56	40996	141.419	ug/l	99
14) Acrylonitrile	5.724	53	118202	126.580	ug/l	99
15) Acetone	4.430	58	39004	160.116	ug/l	89
16) Carbon Disulfide	4.712	76	111936	27.736	ug/l	97
17) Allyl chloride	5.030	41	58302	26.565	ug/l	91
18) Methylene Chloride	5.277	84	51067	27.877	ug/l	94
19) trans-1,2-Dichloroethene	5.794	96	45357	26.543	ug/l	99
20) Diisopropyl ether	6.677	45	155887	23.793	ug/l	95
21) 1,1-Dichloroethane	6.577	63	94582	24.642	ug/l	100
22) cis-1,2-Dichloroethene	7.494	96	54175	20.272	ug/l	93
23) tert-Butyl Alcohol	5.512	59	15704	43.716	ug/l #	100
24) Methyl tert-Butyl Ether	5.800	73	135791	25.191	ug/l	94
25) Chloroform	7.971	83	100920	21.804	ug/l	99
26) Cyclohexane	8.259	56	67171	19.299	ug/l #	98
29) 1,1-Dichloropropene	8.371	75	69240	21.337	ug/l	97
30) 2-Butanone	7.488	43	162188	99.365	ug/l	97
31) 2,2-Dichloropropane	7.494	77	74657	23.064	ug/l	99
32) 1,1,1-Trichloroethane	8.171	97	84466	22.093	ug/l	96
33) Carbon Tetrachloride	8.371	117	73097	22.257	ug/l	94
34) Benzene	8.612	78	210062	20.374	ug/l	99
35) Methacrylonitrile	7.783	41	34491	19.625	ug/l	93
36) 1,2-Dichloroethane	8.671	62	79840	23.480	ug/l	95
37) Trichloroethene	9.353	130	49527	20.323	ug/l	99
38) Methylcyclohexane	9.606	83	60939	18.784	ug/l	96
39) 1,2-Dichloropropane	9.624	63	54840	20.620	ug/l #	88
40) Dibromomethane	9.712	93	38025	21.680	ug/l	94
41) Bromodichloromethane	9.894	83	79692	22.793	ug/l	92
42) Vinyl Acetate	6.612	43	435918	112.455	ug/l	97

Data Path : Z:\voasrv\HPCHEM1\MSVOA\_N\Data\VN091923\  
 Data File : VN079297.D  
 Acq On : 19 Sep 2023 11:00  
 Operator : JC\MD  
 Sample : VSTDCCC020  
 Misc : 5.0mL/MSVOA\_N/WATER  
 ALS Vial : 2 Sample Multiplier: 1

Instrument :  
 MSVOA\_N  
 ClientSampleId :

Quant Time: Sep 19 15:40:18 2023  
 Quant Method : Z:\voasrv\HPCHEM1\MSVOA\_N\methods\624N090723W.M  
 Quant Title : METHOD 624 VOLATILE ORGANIC ANALYSIS  
 QLast Update : Fri Sep 08 05:09:17 2023  
 Response via : Initial Calibration

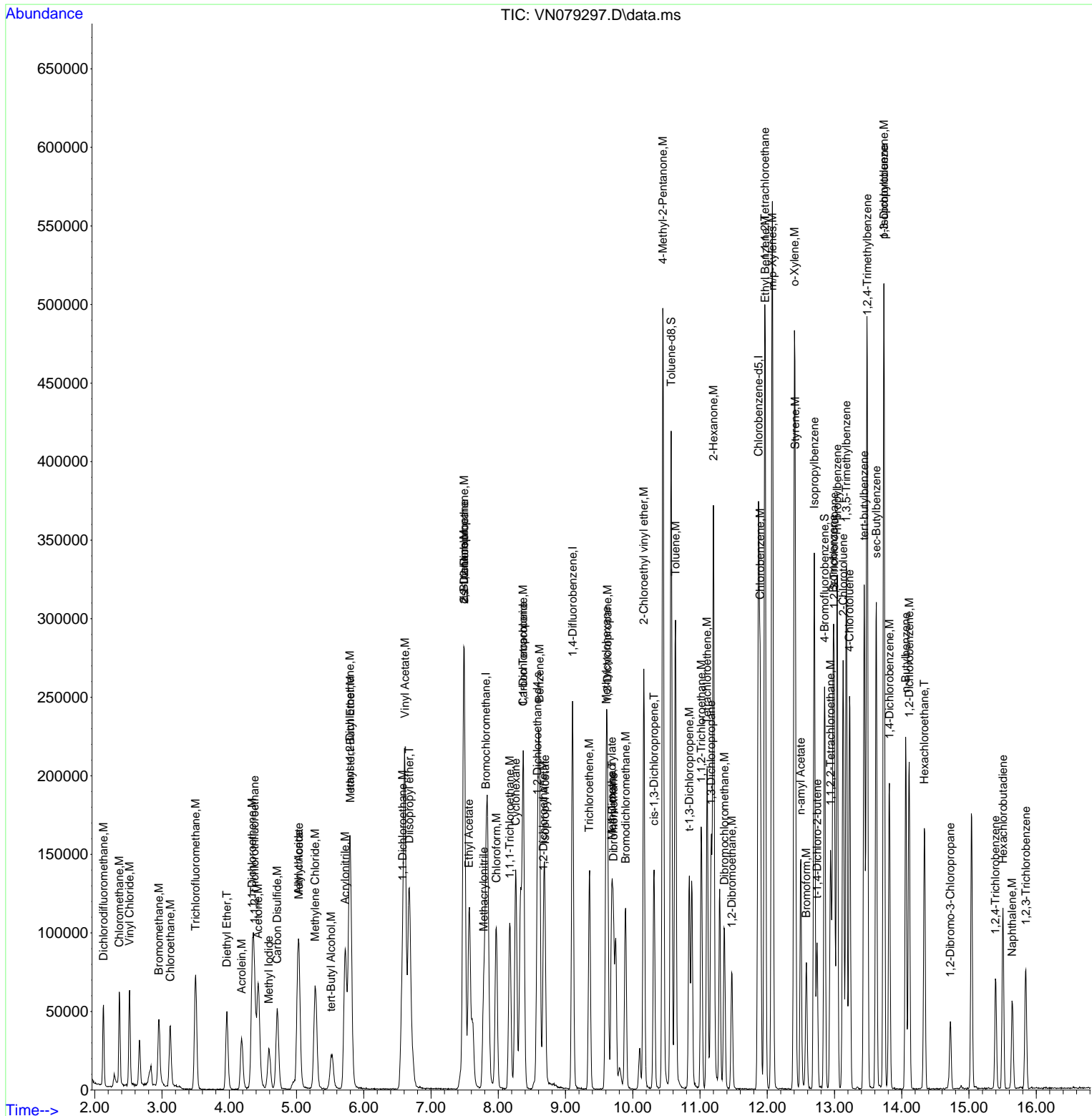
Compound	R.T.	QIon	Response	Conc	Units	Dev(Min)
43) Ethyl Acetate	7.565	43	69591	22.449	ug/l	97
44) Isopropyl Acetate	8.694	43	102321	18.349	ug/l	99
45) 1,4-Dioxane	9.694	88	18484	332.997	ug/l #	59
46) Methyl methacrylate	9.688	41	48869	19.615	ug/l	90
47) n-amyl Acetate	12.500	43	77441	19.746	ug/l	98
48) t-1,3-Dichloropropene	10.841	75	73805	19.512	ug/l	91
49) cis-1,3-Dichloropropene	10.318	75	83710	21.217	ug/l	90
50) 1,1,2-Trichloroethane	11.018	97	52280	21.248	ug/l	94
52) 1,3-Dichloropropane	11.165	76	90071	21.442	ug/l	98
53) Dibromochloromethane	11.365	129	52644	20.400	ug/l	97
54) 1,2-Dibromoethane	11.471	107	49616	19.858	ug/l	99
55) 2-Chloroethyl vinyl ether	10.165	63	114101	84.506	ug/l	98
56) Bromoform	12.582	173	35378	19.674	ug/l	97
58) 4-Methyl-2-Pentanone	10.447	43	334902	97.039	ug/l	94
59) 2-Hexanone	11.200	43	236144	97.429	ug/l	94
61) Tetrachloroethene	11.106	164	43843	21.424	ug/l	94
62) Toluene	10.635	91	224404	20.493	ug/l	100
64) Chlorobenzene	11.894	112	129783	20.316	ug/l	95
65) 1,1,1,2-Tetrachloroethane	11.965	131	51300	20.975	ug/l	99
66) Ethyl Benzene	11.970	91	228772	20.749	ug/l	97
67) m/p-Xylenes	12.076	106	176129	42.455	ug/l	98
68) o-Xylene	12.406	106	81674	20.414	ug/l	95
69) Styrene	12.418	104	132776	20.806	ug/l	97
70) Isopropylbenzene	12.700	105	213687	21.012	ug/l	98
71) 1,1,2,2-Tetrachloroethane	12.941	83	74938	19.698	ug/l	98
72) 1,2,3-Trichloropropane	12.994	75	87606	27.368	ug/l	95
73) Bromobenzene	12.982	156	51620	20.320	ug/l	99
74) n-propylbenzene	13.041	91	254743	21.985	ug/l	98
75) 2-Chlorotoluene	13.129	91	157185	21.156	ug/l	98
76) 1,3,5-Trimethylbenzene	13.176	105	182528	21.707	ug/l	99
77) t-1,4-Dichloro-2-butene	12.741	75	19360	17.178	ug/l	82
78) 4-Chlorotoluene	13.223	91	148561	21.176	ug/l	97
79) tert-butylbenzene	13.441	119	141880	20.556	ug/l	93
80) 1,2,4-Trimethylbenzene	13.488	105	178049	22.172	ug/l	99
81) sec-Butylbenzene	13.623	105	204654	21.671	ug/l	99
82) p-Isopropyltoluene	13.735	119	163947	21.978	ug/l	97
83) 1,3-Dichlorobenzene	13.735	146	84972	21.062	ug/l	99
84) 1,4-Dichlorobenzene	13.817	146	78702	20.800	ug/l	100
85) n-Butylbenzene	14.059	91	122572	21.574	ug/l	95
86) Hexachloroethane	14.335	117	34126	23.106	ug/l	92
87) 1,2-Dichlorobenzene	14.112	146	82432	20.704	ug/l	97
88) 1,2-Dibromo-3-Chloropr...	14.723	75	11491	17.870	ug/l	89
89) 1,2,4-Trichlorobenzene	15.394	180	22230	13.048	ug/l	96
90) Hexachlorobutadiene	15.506	225	20598	19.904	ug/l	97
91) Naphthalene	15.641	128	53151	11.938	ug/l	99
92) 1,2,3-Trichlorobenzene	15.847	180	26118	15.330	ug/l	92

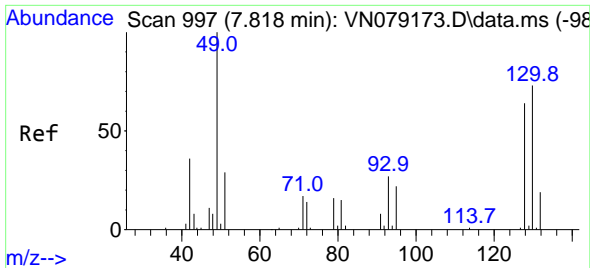
(#) = qualifier out of range (m) = manual integration (+) = signals summed

Data Path : Z:\voasrv\HPCHEM1\MSVOA\_N\Data\VN091923\  
 Data File : VN079297.D  
 Acq On : 19 Sep 2023 11:00  
 Operator : JC\MD  
 Sample : VSTDCCC020  
 Misc : 5.0mL/MSVOA\_N/WATER  
 ALS Vial : 2 Sample Multiplier: 1

Instrument :  
 MSVOA\_N  
 ClientSampleId :

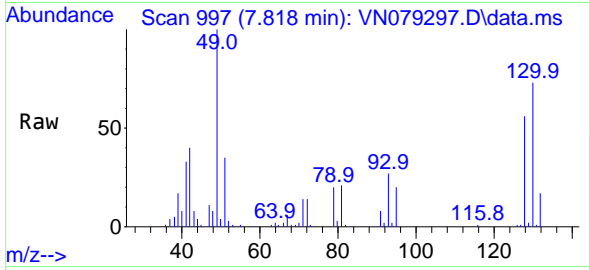
Quant Time: Sep 19 15:40:18 2023  
 Quant Method : Z:\voasrv\HPCHEM1\MSVOA\_N\methods\624N090723W.M  
 Quant Title : METHOD 624 VOLATILE ORGANIC ANALYSIS  
 QLast Update : Fri Sep 08 05:09:17 2023  
 Response via : Initial Calibration



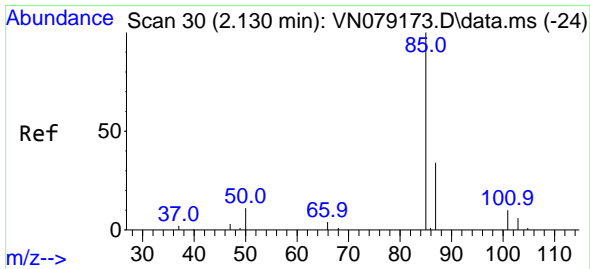
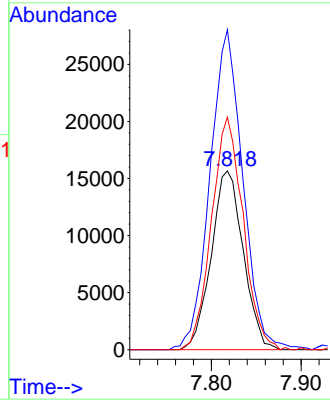
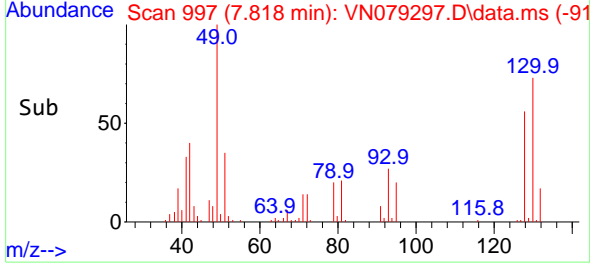


#1  
 Bromochloromethane  
 Concen: 30.000 ug/l  
 RT: 7.818 min Scan# 997  
 Delta R.T. -0.000 min  
 Lab File: VN079297.D  
 Acq: 19 Sep 2023 11:00

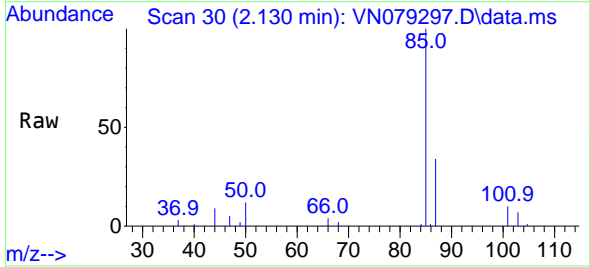
Instrument : MSVOA\_N  
 ClientSampleId :



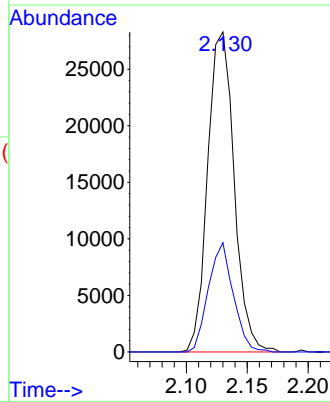
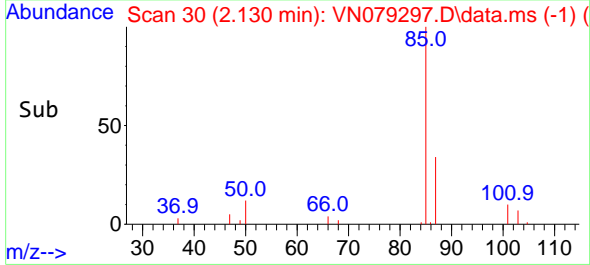
Tgt Ion:128 Resp: 38831  
 Ion Ratio Lower Upper  
 128 100  
 49 183.5 0.0 414.3  
 130 128.2 0.0 311.0

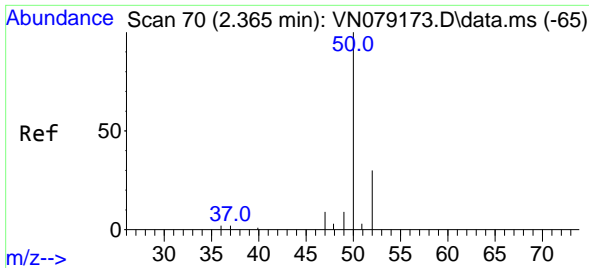


#2  
 Dichlorodifluoromethane  
 Concen: 19.812 ug/l  
 RT: 2.130 min Scan# 30  
 Delta R.T. -0.000 min  
 Lab File: VN079297.D  
 Acq: 19 Sep 2023 11:00



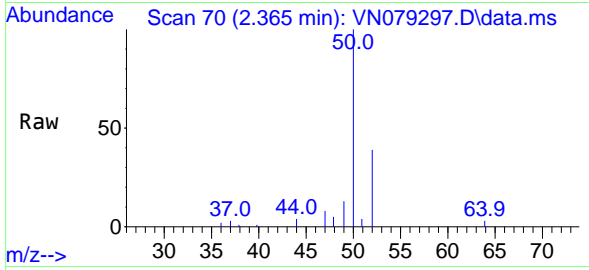
Tgt Ion: 85 Resp: 42906  
 Ion Ratio Lower Upper  
 85 100  
 87 34.1 17.3 51.7



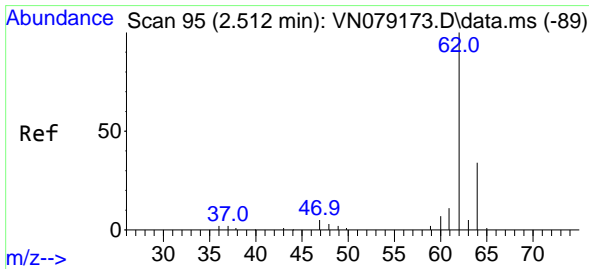
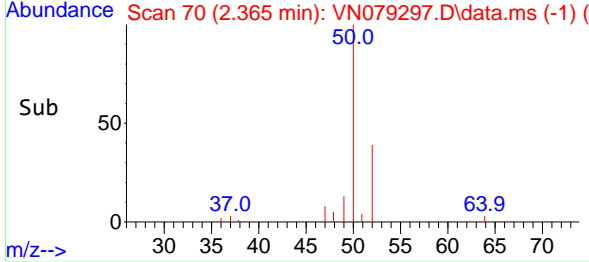
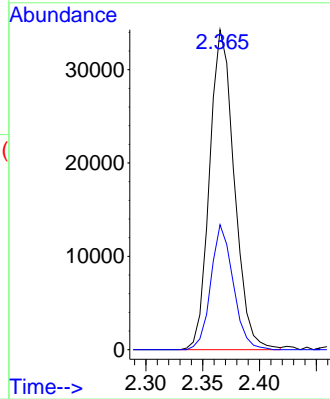


#3  
 Chloromethane  
 Concen: 23.861 ug/l  
 RT: 2.365 min Scan# 70  
 Delta R.T. 0.000 min  
 Lab File: VN079297.D  
 Acq: 19 Sep 2023 11:00

Instrument :  
 MSVOA\_N  
 ClientSampleId :

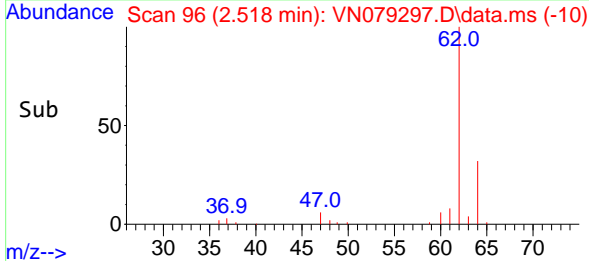
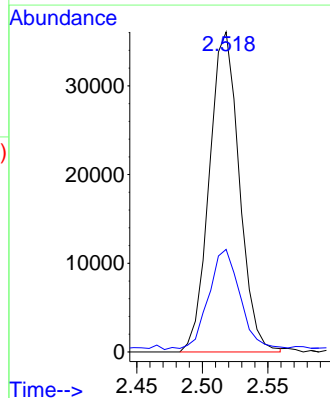
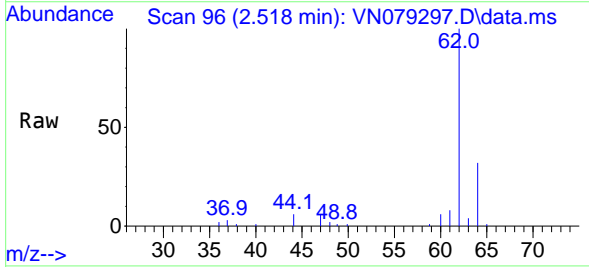


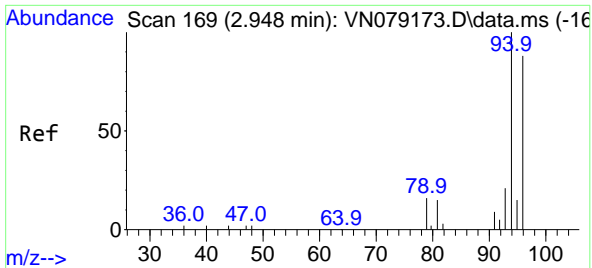
Tgt Ion: 50 Resp: 51816  
 Ion Ratio Lower Upper  
 50 100  
 52 39.1 24.0 36.0#



#4  
 Vinyl Chloride  
 Concen: 26.709 ug/l  
 RT: 2.518 min Scan# 96  
 Delta R.T. 0.006 min  
 Lab File: VN079297.D  
 Acq: 19 Sep 2023 11:00

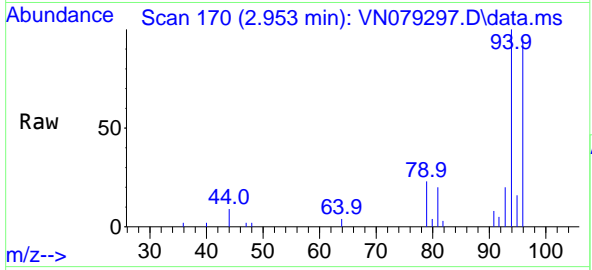
Tgt Ion: 62 Resp: 57384  
 Ion Ratio Lower Upper  
 62 100  
 64 30.9 27.1 40.7



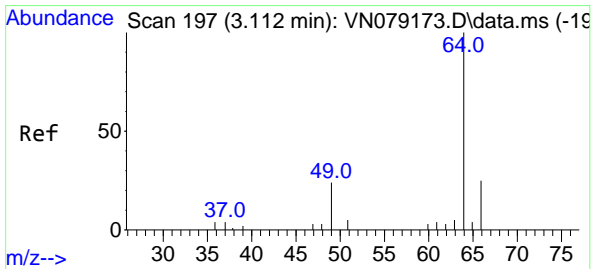
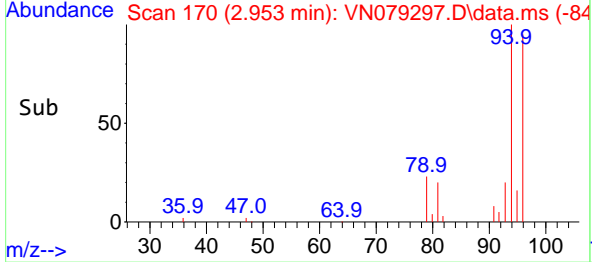
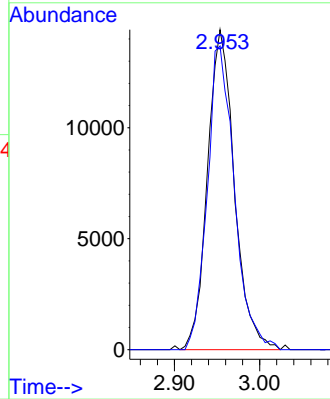


#5  
 Bromomethane  
 Concen: 24.011 ug/l  
 RT: 2.953 min Scan# 11  
 Delta R.T. 0.005 min  
 Lab File: VN079297.D  
 Acq: 19 Sep 2023 11:00

Instrument :  
 MSVOA\_N  
 ClientSampleId :

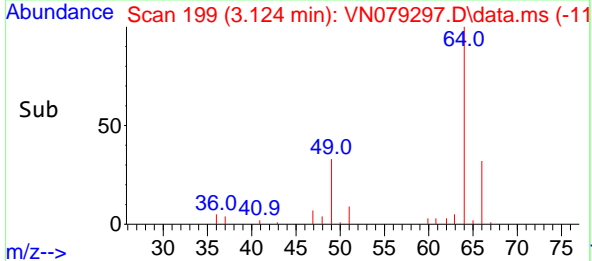
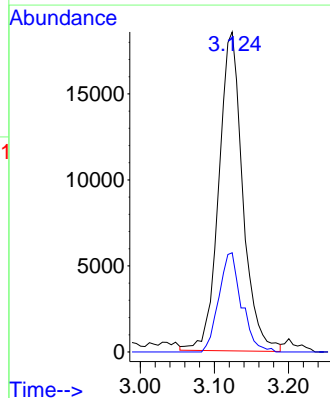
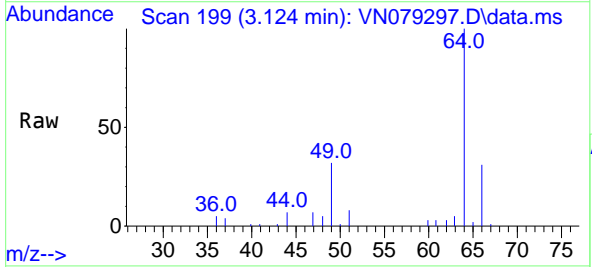


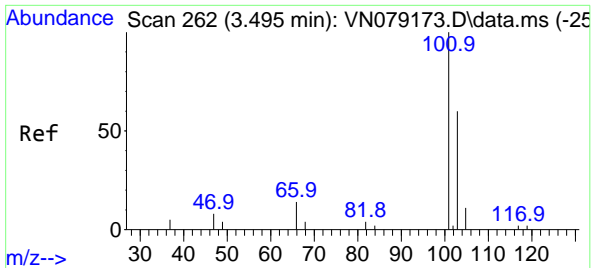
Tgt Ion: 94 Resp: 31662  
 Ion Ratio Lower Upper  
 94 100  
 96 94.9 70.6 105.8



#6  
 Chloroethane  
 Concen: 31.635 ug/l  
 RT: 3.124 min Scan# 199  
 Delta R.T. 0.012 min  
 Lab File: VN079297.D  
 Acq: 19 Sep 2023 11:00

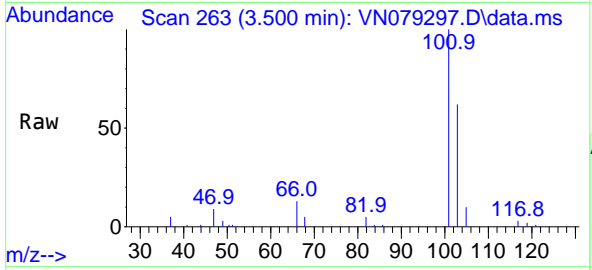
Tgt Ion: 64 Resp: 41626  
 Ion Ratio Lower Upper  
 64 100  
 66 31.5 20.1 30.1#



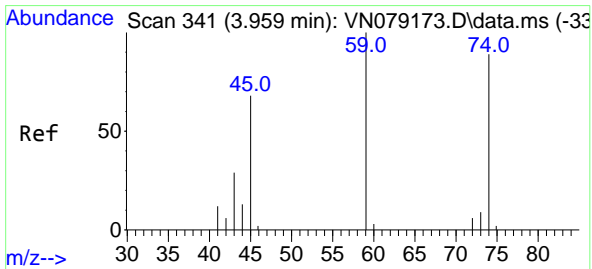
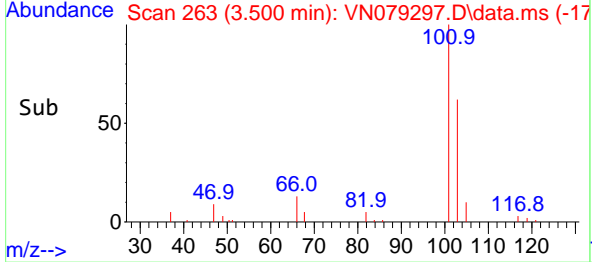
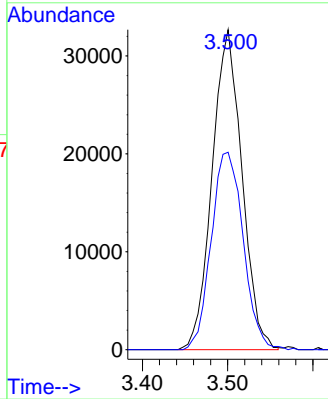


#7  
 Trichlorofluoromethane  
 Concen: 31.100 ug/l  
 RT: 3.500 min Scan# 20  
 Delta R.T. 0.005 min  
 Lab File: VN079297.D  
 Acq: 19 Sep 2023 11:00

Instrument :  
 MSVOA\_N  
 ClientSampleId :

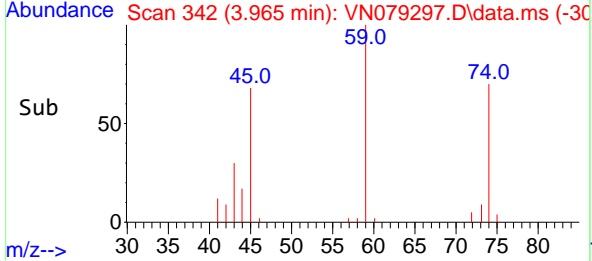
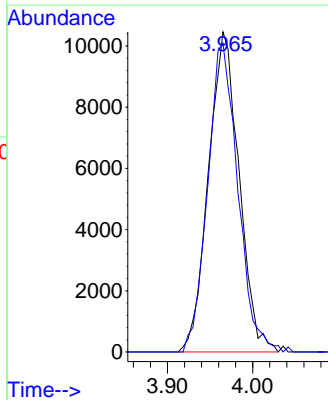
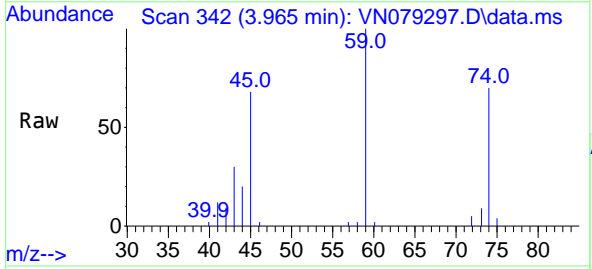


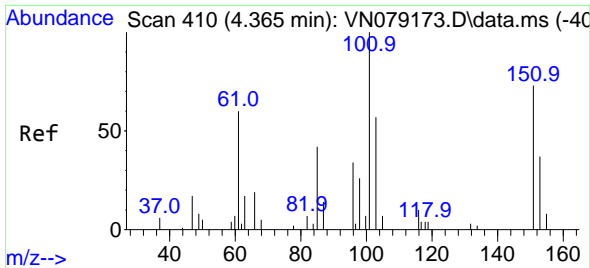
Tgt Ion:101 Resp: 79550  
 Ion Ratio Lower Upper  
 101 100  
 103 61.7 48.2 72.4



#8  
 Diethyl Ether  
 Concen: 27.805 ug/l  
 RT: 3.965 min Scan# 342  
 Delta R.T. 0.006 min  
 Lab File: VN079297.D  
 Acq: 19 Sep 2023 11:00

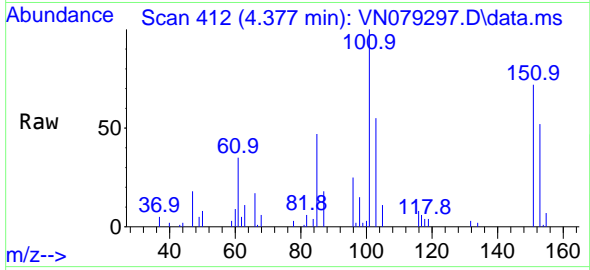
Tgt Ion: 74 Resp: 26077  
 Ion Ratio Lower Upper  
 74 100  
 45 95.1 17.6 158.0



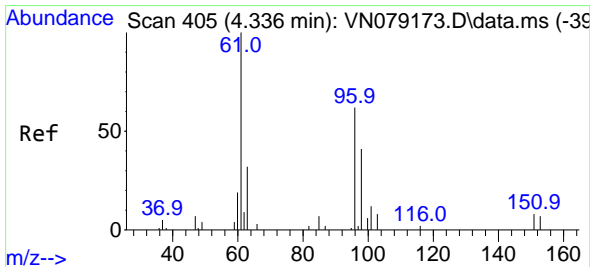
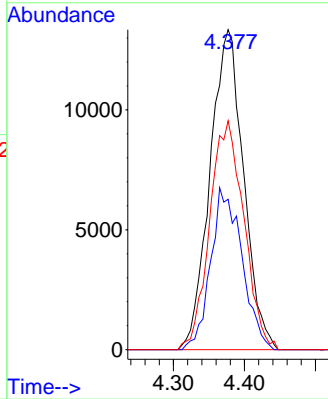
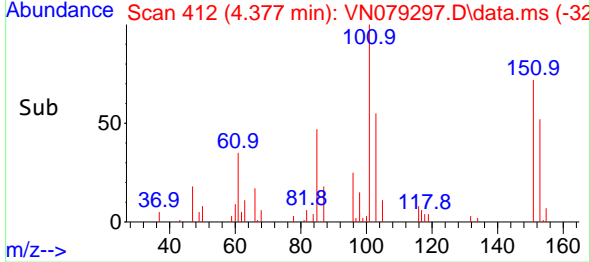


#9  
 1,1,2-Trichlorotrifluoroethane  
 Concen: 31.066 ug/l  
 RT: 4.377 min Scan# 411  
 Delta R.T. 0.012 min  
 Lab File: VN079297.D  
 Acq: 19 Sep 2023 11:00

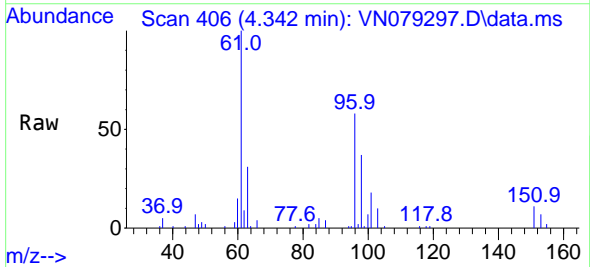
Instrument :  
 MSVOA\_N  
 ClientSampleId :



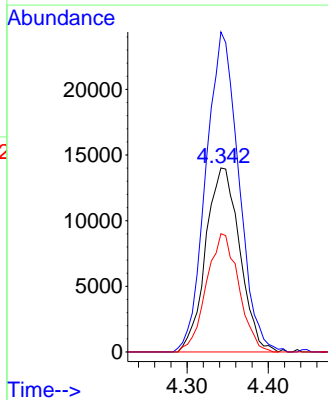
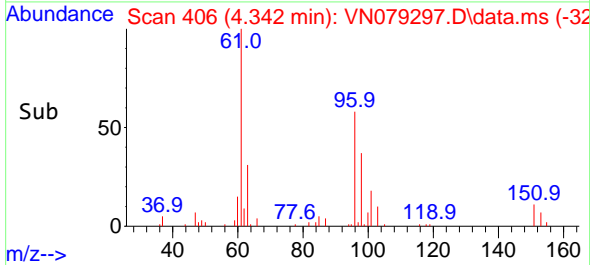
Tgt Ion:101 Resp: 43790  
 Ion Ratio Lower Upper  
 101 100  
 85 47.0 0.0 85.6  
 151 72.9 0.0 155.8



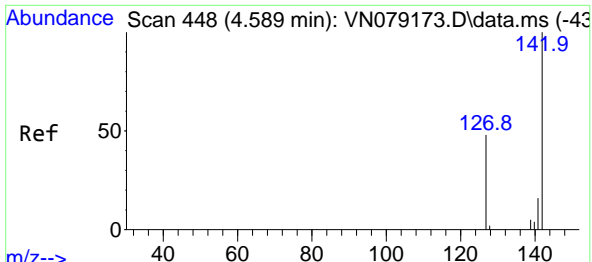
#10  
 1,1-Dichloroethene  
 Concen: 29.861 ug/l  
 RT: 4.342 min Scan# 406  
 Delta R.T. 0.006 min  
 Lab File: VN079297.D  
 Acq: 19 Sep 2023 11:00



Tgt Ion: 96 Resp: 40784  
 Ion Ratio Lower Upper  
 96 100  
 61 172.4 130.2 195.2  
 98 64.3 52.3 78.5

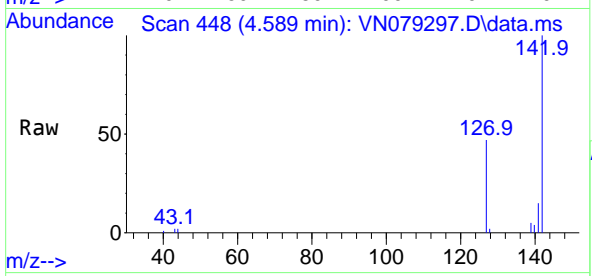






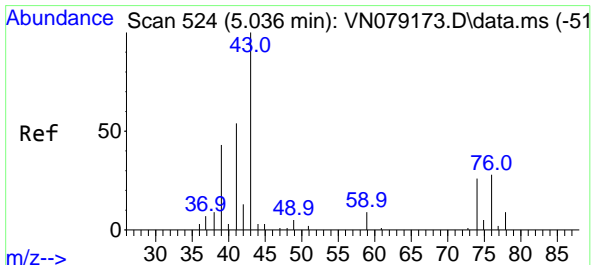
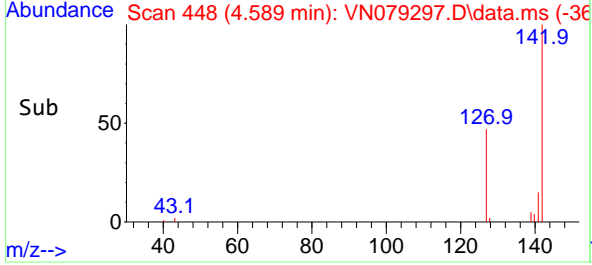
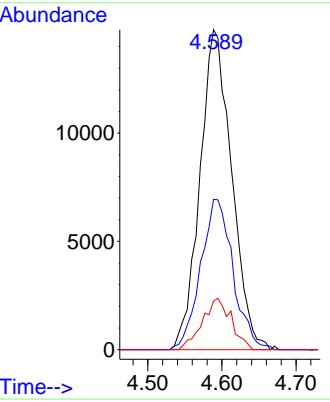
#11  
Methyl Iodide  
Concen: 25.557 ug/l  
RT: 4.589 min Scan# 448  
Delta R.T. -0.000 min  
Lab File: VN079297.D  
Acq: 19 Sep 2023 11:00

Instrument : MSVOA\_N  
ClientSampleId :



Tgt Ion: 142 Resp: 43970

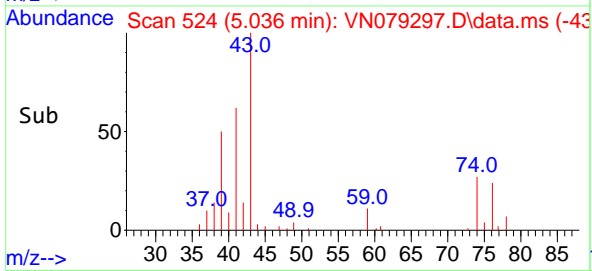
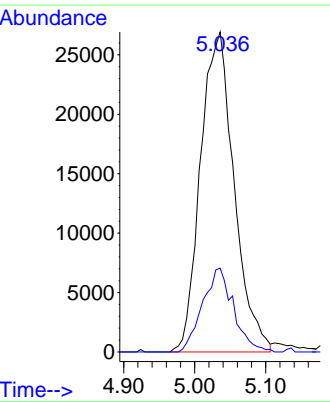
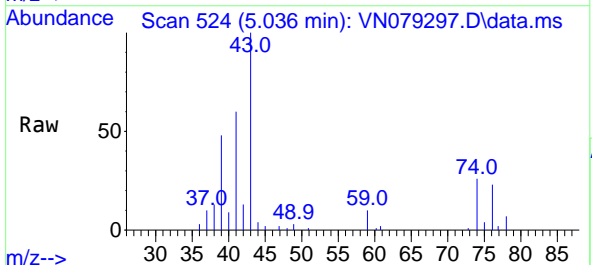
Ion	Ratio	Lower	Upper
142	100		
127	46.4	23.8	71.4
141	15.2	8.2	24.6

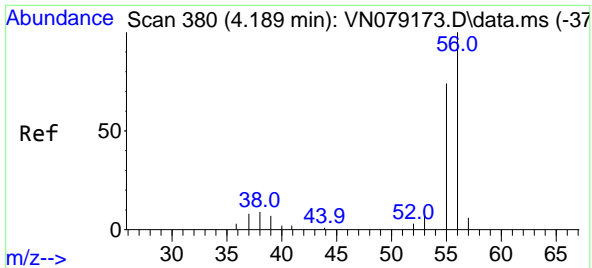


#12  
Methyl Acetate  
Concen: 27.785 ug/l  
RT: 5.036 min Scan# 524  
Delta R.T. -0.000 min  
Lab File: VN079297.D  
Acq: 19 Sep 2023 11:00

Tgt Ion: 43 Resp: 88437

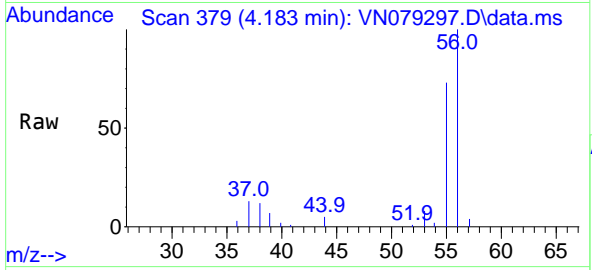
Ion	Ratio	Lower	Upper
43	100		
74	26.1	20.4	30.6



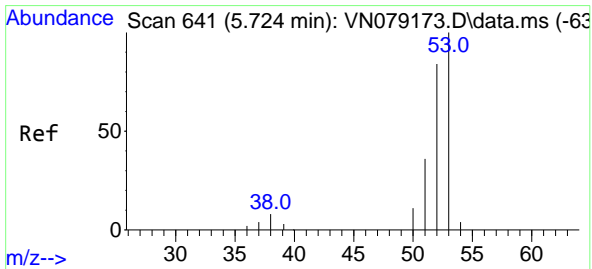
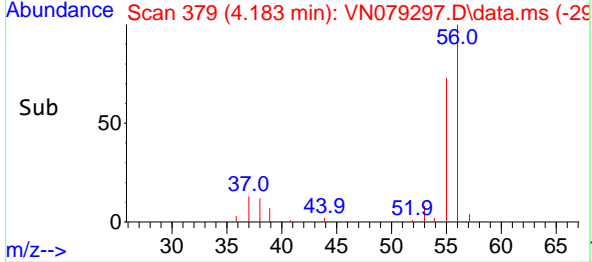
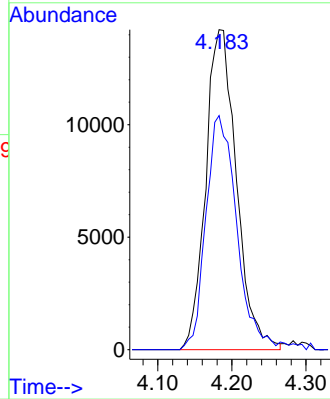


#13  
 Acrolein  
 Concen: 141.419 ug/l  
 RT: 4.183 min Scan# 31  
 Delta R.T. -0.006 min  
 Lab File: VN079297.D  
 Acq: 19 Sep 2023 11:00

Instrument : MSVOA\_N  
 ClientSampleId :

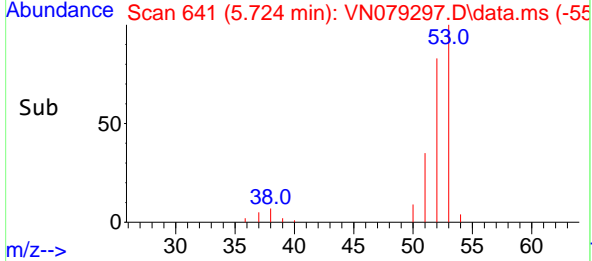
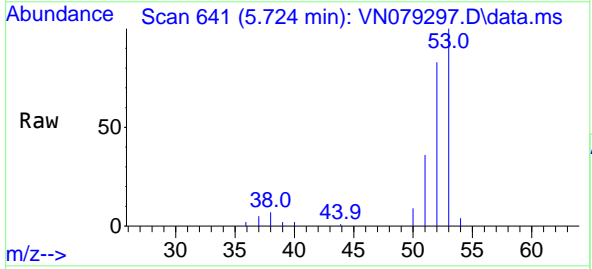
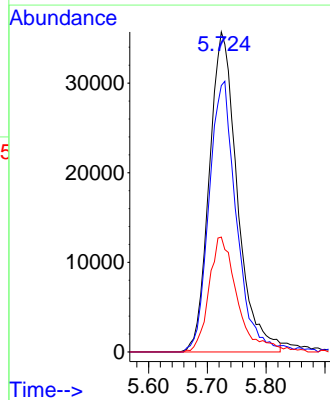


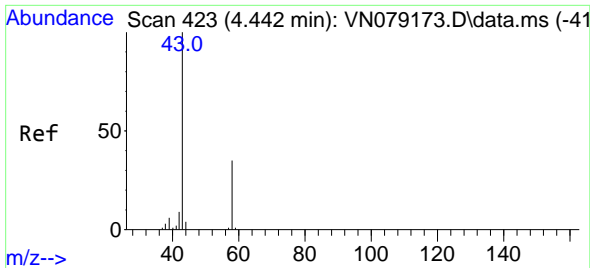
Tgt Ion: 56 Resp: 40996  
 Ion Ratio Lower Upper  
 56 100  
 55 72.8 57.7 86.5



#14  
 Acrylonitrile  
 Concen: 126.580 ug/l  
 RT: 5.724 min Scan# 641  
 Delta R.T. -0.000 min  
 Lab File: VN079297.D  
 Acq: 19 Sep 2023 11:00

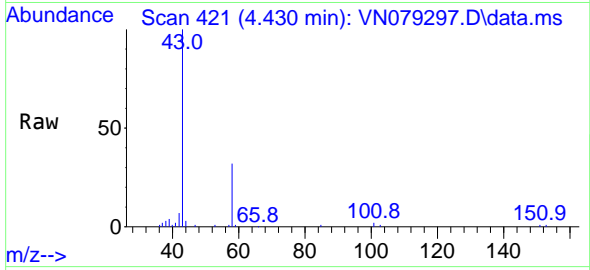
Tgt Ion: 53 Resp: 118202  
 Ion Ratio Lower Upper  
 53 100  
 52 82.1 41.4 124.4  
 51 36.1 17.3 51.9



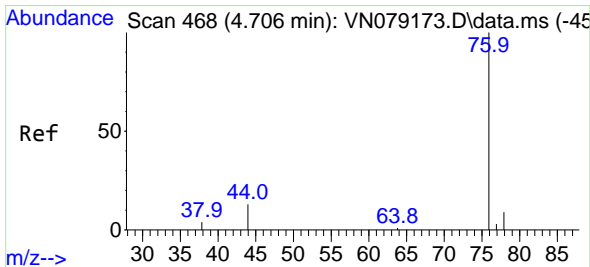
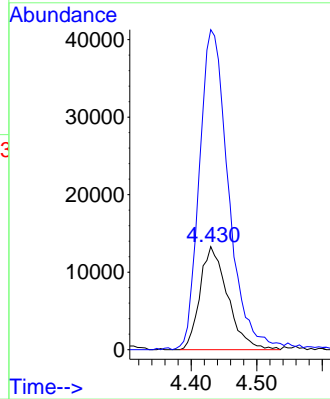
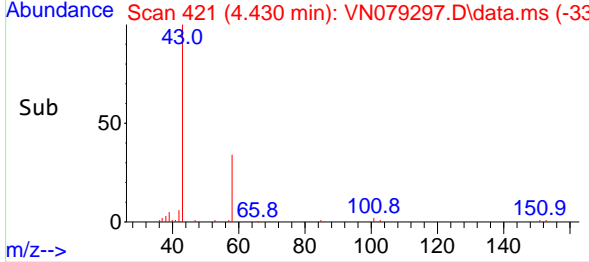


#15  
 Acetone  
 Concen: 160.116 ug/l  
 RT: 4.430 min Scan# 41  
 Delta R.T. -0.012 min  
 Lab File: VN079297.D  
 Acq: 19 Sep 2023 11:00

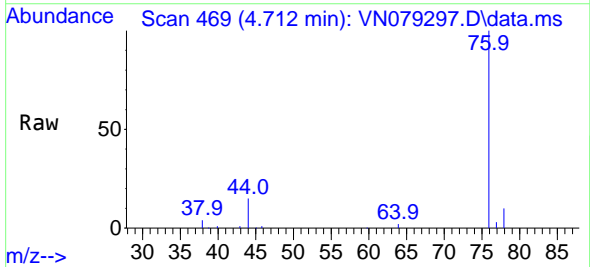
Instrument :  
 MSVOA\_N  
 ClientSampleId :



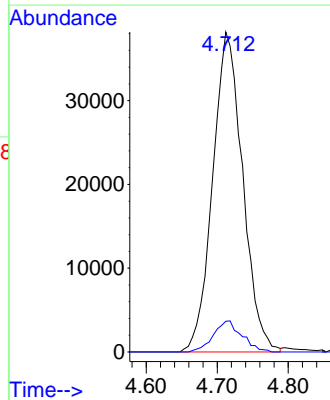
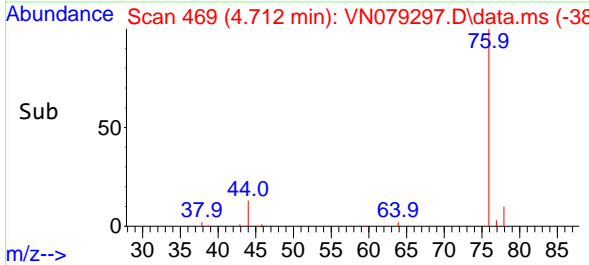
Tgt Ion: 58 Resp: 39004  
 Ion Ratio Lower Upper  
 58 100  
 43 306.8 228.3 342.5

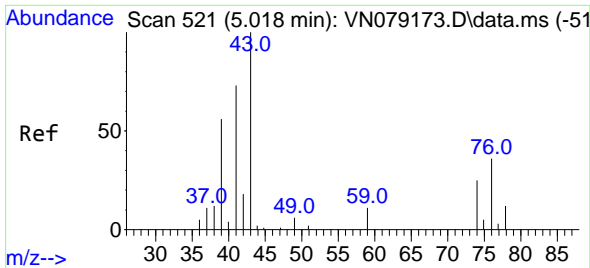


#16  
 Carbon Disulfide  
 Concen: 27.736 ug/l  
 RT: 4.712 min Scan# 469  
 Delta R.T. 0.006 min  
 Lab File: VN079297.D  
 Acq: 19 Sep 2023 11:00



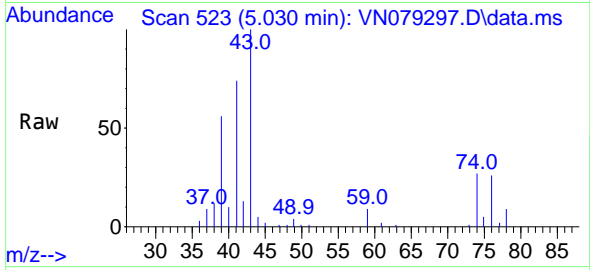
Tgt Ion: 76 Resp: 111936  
 Ion Ratio Lower Upper  
 76 100  
 78 9.6 6.9 10.3



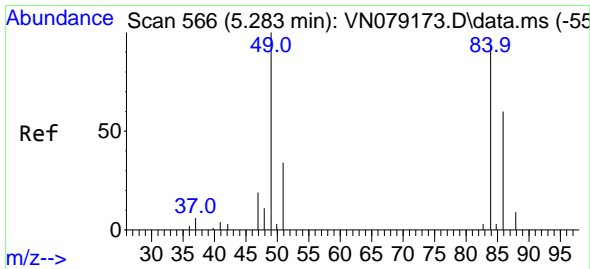
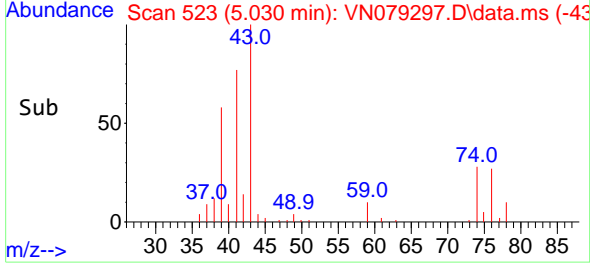
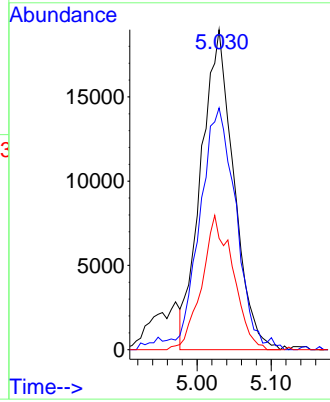


#17  
 Allyl chloride  
 Concen: 26.565 ug/l  
 RT: 5.030 min Scan# 51  
 Delta R.T. 0.012 min  
 Lab File: VN079297.D  
 Acq: 19 Sep 2023 11:00

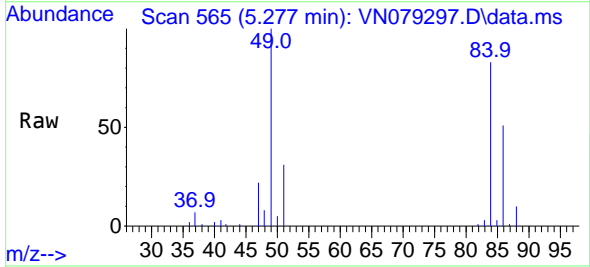
Instrument :  
 MSVOA\_N  
 ClientSampleId :



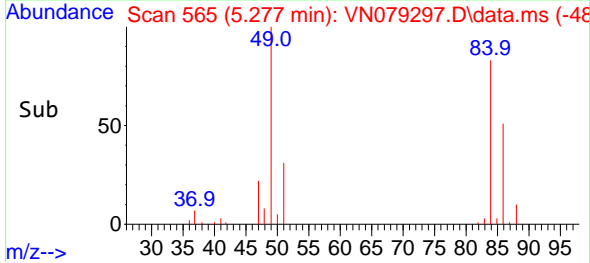
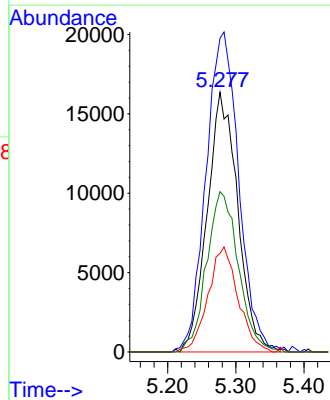
Tgt Ion: 41 Resp: 58302  
 Ion Ratio Lower Upper  
 41 100  
 39 74.1 38.3 114.8  
 76 34.8 23.7 71.1

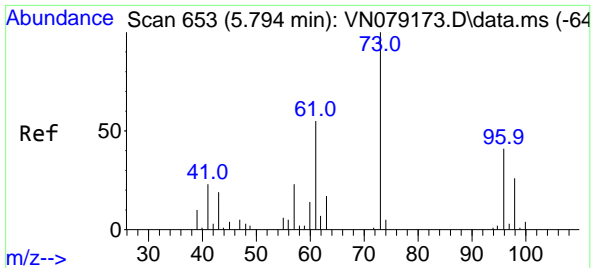


#18  
 Methylene Chloride  
 Concen: 27.877 ug/l  
 RT: 5.277 min Scan# 565  
 Delta R.T. -0.006 min  
 Lab File: VN079297.D  
 Acq: 19 Sep 2023 11:00



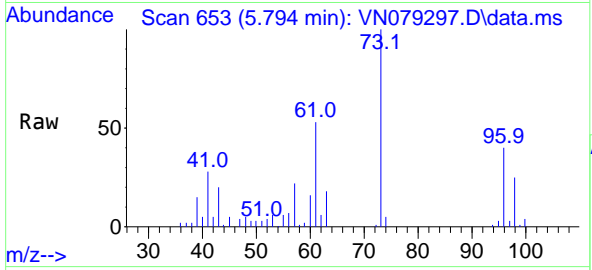
Tgt Ion: 84 Resp: 51067  
 Ion Ratio Lower Upper  
 84 100  
 49 119.6 86.9 130.3  
 51 36.9 28.6 43.0  
 86 61.7 50.7 76.1



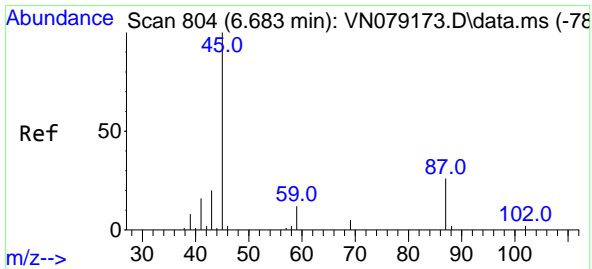
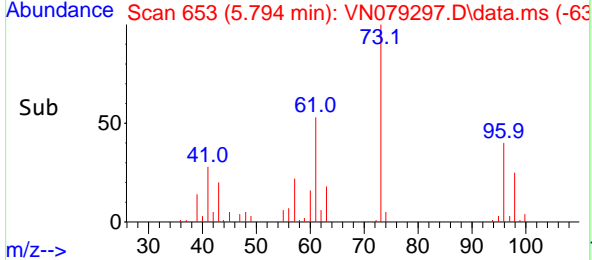
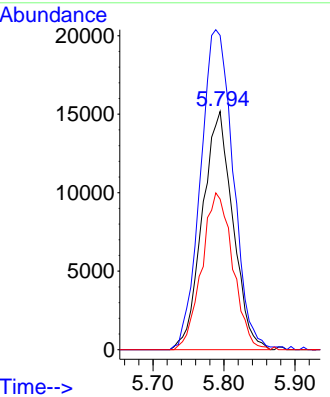


#19  
 trans-1,2-Dichloroethene  
 Concen: 26.543 ug/l  
 RT: 5.794 min Scan# 61  
 Delta R.T. 0.000 min  
 Lab File: VN079297.D  
 Acq: 19 Sep 2023 11:00

Instrument : MSVOA\_N  
 ClientSampleId :

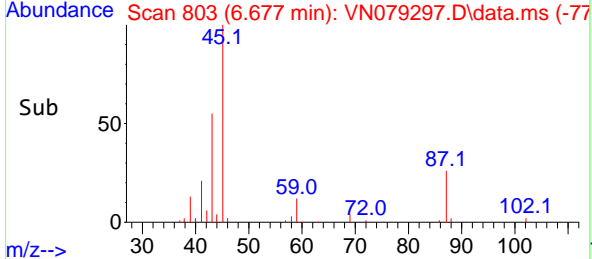
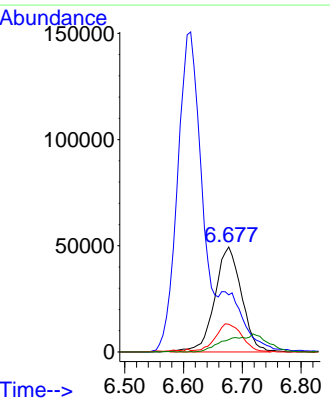
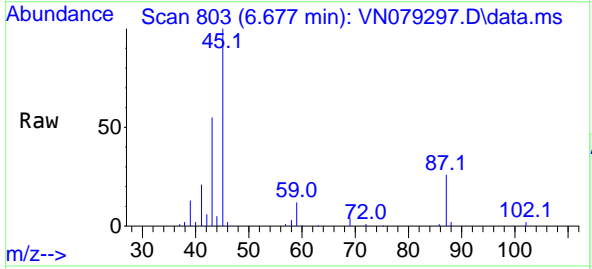


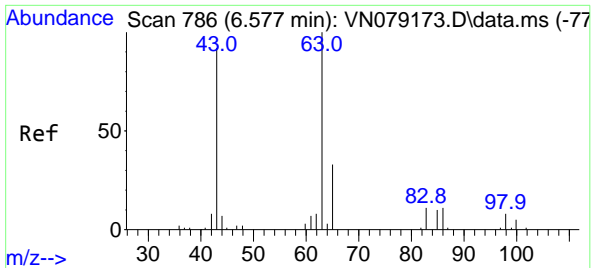
Tgt Ion: 96 Resp: 45357  
 Ion Ratio Lower Upper  
 96 100  
 61 131.9 106.6 159.8  
 98 63.2 51.0 76.4



#20  
 Diisopropyl ether  
 Concen: 23.793 ug/l  
 RT: 6.677 min Scan# 803  
 Delta R.T. -0.006 min  
 Lab File: VN079297.D  
 Acq: 19 Sep 2023 11:00

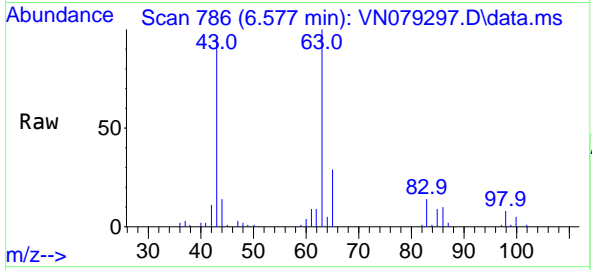
Tgt Ion: 45 Resp: 155887  
 Ion Ratio Lower Upper  
 45 100  
 43 49.5 34.9 52.3  
 87 26.4 21.5 32.3  
 59 11.3 9.7 14.5



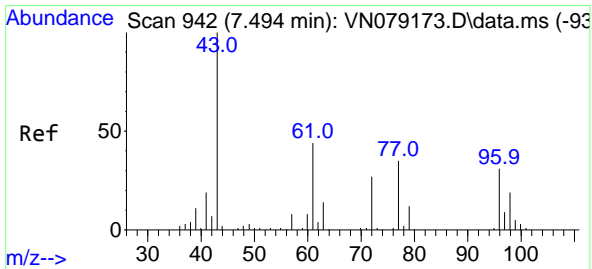
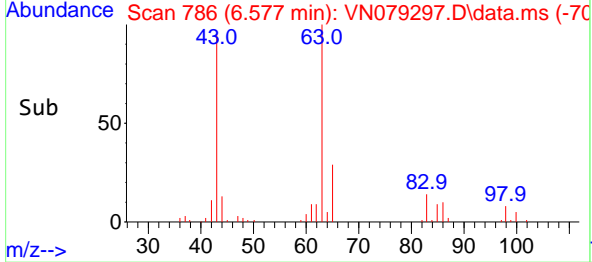
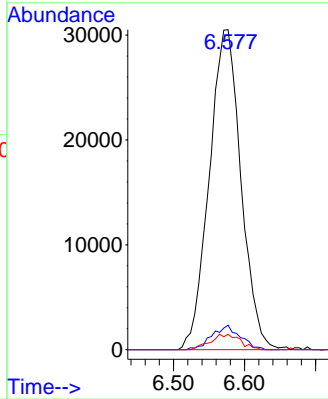


#21  
 1,1-Dichloroethane  
 Concen: 24.642 ug/l  
 RT: 6.577 min Scan# 786  
 Delta R.T. -0.000 min  
 Lab File: VN079297.D  
 Acq: 19 Sep 2023 11:00

Instrument :  
 MSVOA\_N  
 ClientSampleId :

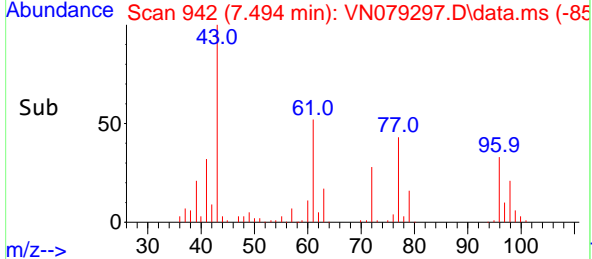
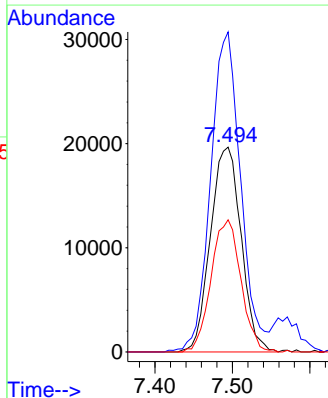
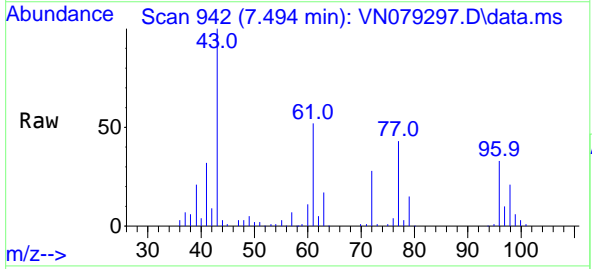


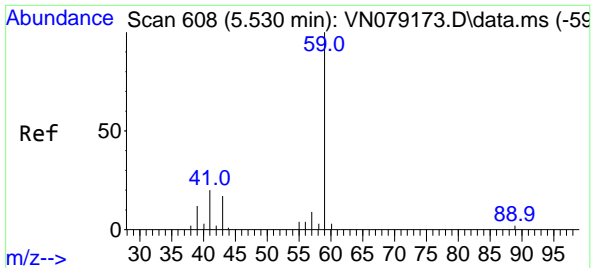
Tgt Ion: 63 Resp: 94582  
 Ion Ratio Lower Upper  
 63 100  
 98 7.7 3.9 11.5  
 100 4.8 2.5 7.5



#22  
 cis-1,2-Dichloroethene  
 Concen: 20.272 ug/l  
 RT: 7.494 min Scan# 942  
 Delta R.T. 0.000 min  
 Lab File: VN079297.D  
 Acq: 19 Sep 2023 11:00

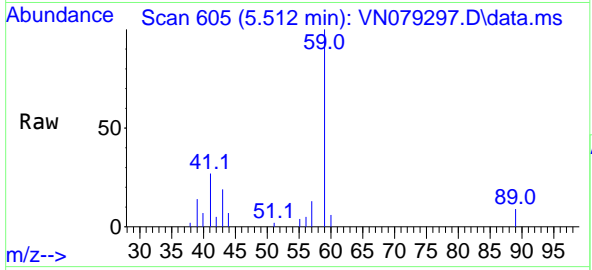
Tgt Ion: 96 Resp: 54175  
 Ion Ratio Lower Upper  
 96 100  
 61 152.9 113.0 169.6  
 98 62.5 50.2 75.4



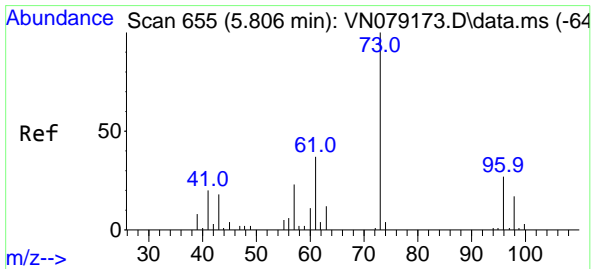
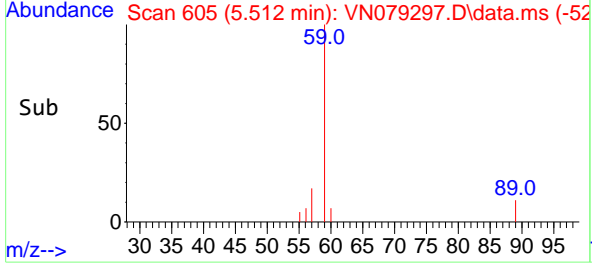
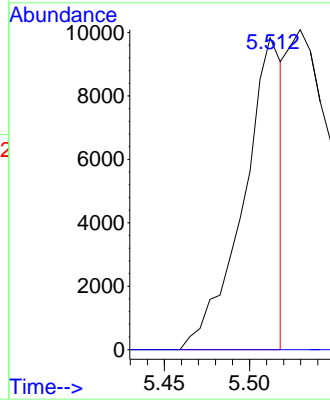


#23  
 tert-Butyl Alcohol  
 Concen: 43.716 ug/l  
 RT: 5.512 min Scan# 605  
 Delta R.T. -0.018 min  
 Lab File: VN079297.D  
 Acq: 19 Sep 2023 11:00

Instrument :  
 MSVOA\_N  
 ClientSampleId :

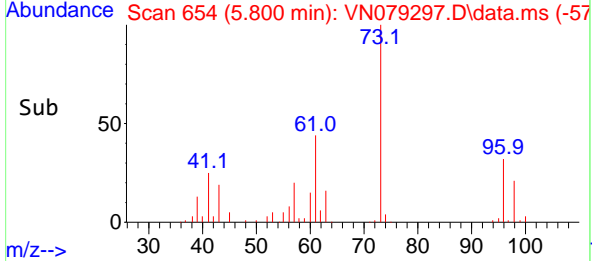
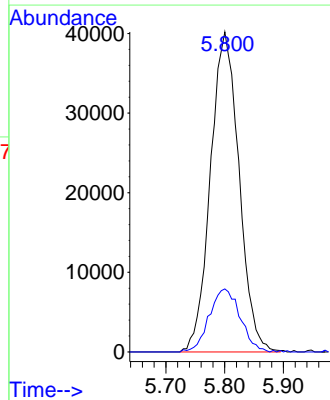
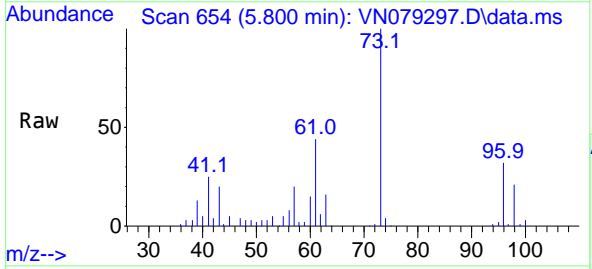


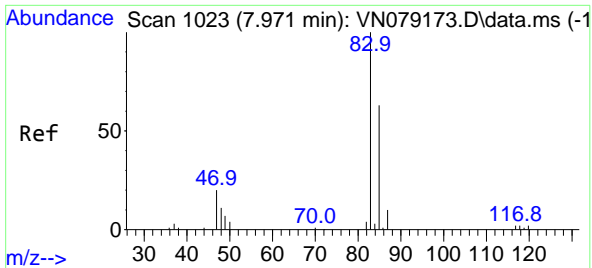
Tgt Ion: 59 Resp: 15704  
 Ion Ratio Lower Upper  
 59 100  
 52 0.0 0.0 0.0



#24  
 Methyl tert-Butyl Ether  
 Concen: 25.191 ug/l  
 RT: 5.800 min Scan# 654  
 Delta R.T. -0.006 min  
 Lab File: VN079297.D  
 Acq: 19 Sep 2023 11:00

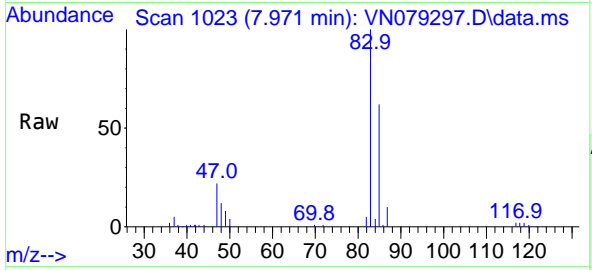
Tgt Ion: 73 Resp: 135791  
 Ion Ratio Lower Upper  
 73 100  
 43 21.2 14.7 22.1



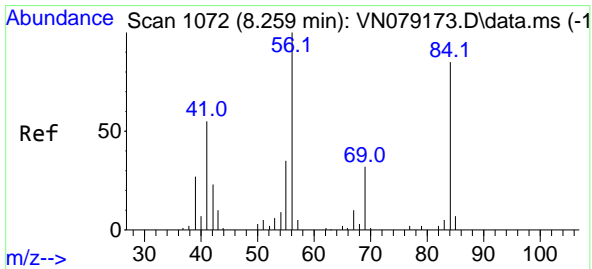
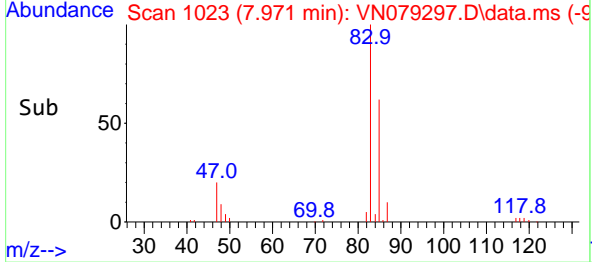
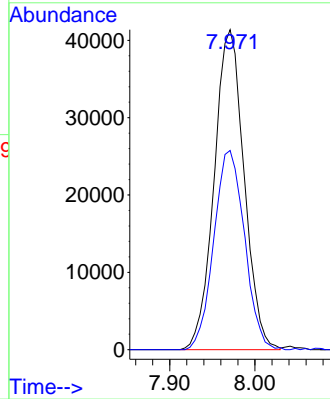


#25  
 Chloroform  
 Concen: 21.804 ug/l  
 RT: 7.971 min Scan# 1023  
 Delta R.T. -0.000 min  
 Lab File: VN079297.D  
 Acq: 19 Sep 2023 11:00

Instrument : MSVOA\_N  
 ClientSampleId :

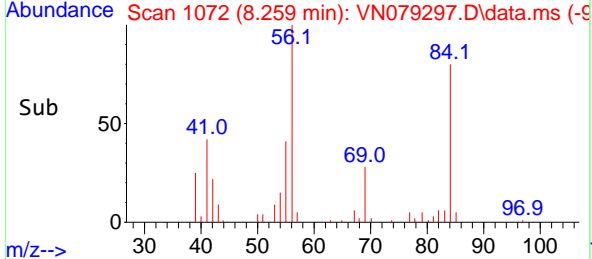
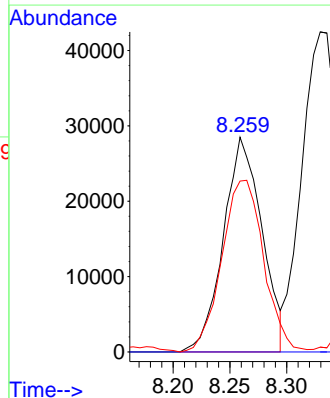
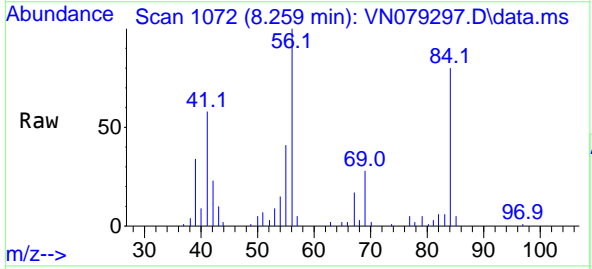


Tgt Ion: 83 Resp: 100920  
 Ion Ratio Lower Upper  
 83 100  
 85 62.3 50.6 76.0

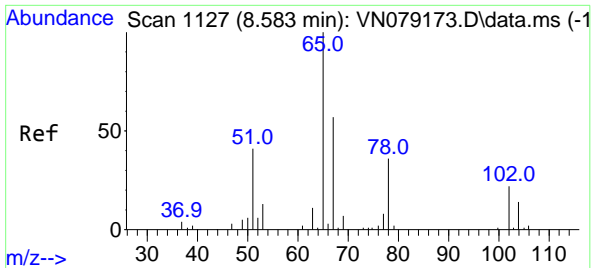


#26  
 Cyclohexane  
 Concen: 19.299 ug/l  
 RT: 8.259 min Scan# 1072  
 Delta R.T. -0.000 min  
 Lab File: VN079297.D  
 Acq: 19 Sep 2023 11:00

Tgt Ion: 56 Resp: 67171  
 Ion Ratio Lower Upper  
 56 100  
 89 0.0 0.0 0.0  
 84 87.1 71.1 106.7



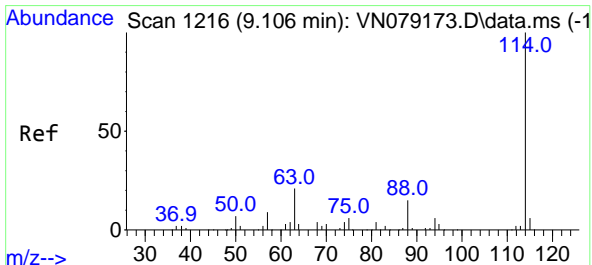
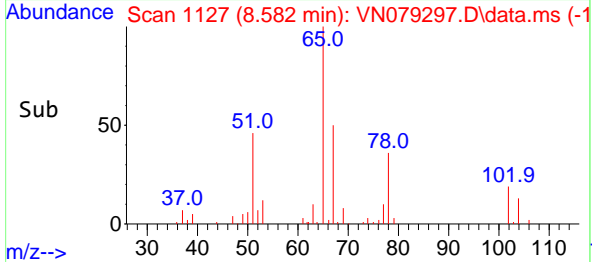
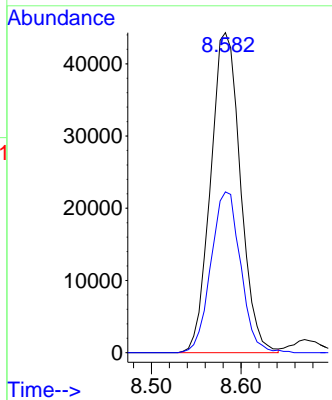
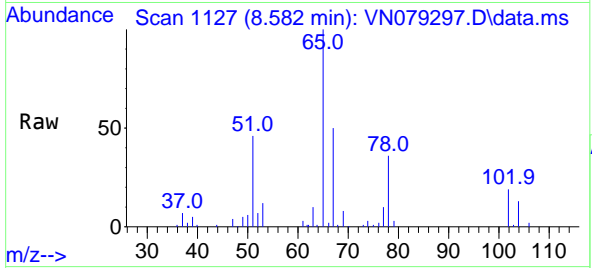




#27  
 1,2-Dichloroethane-d4  
 Concen: 35.013 ug/l  
 RT: 8.582 min Scan# 1127  
 Delta R.T. -0.001 min  
 Lab File: VN079297.D  
 Acq: 19 Sep 2023 11:00

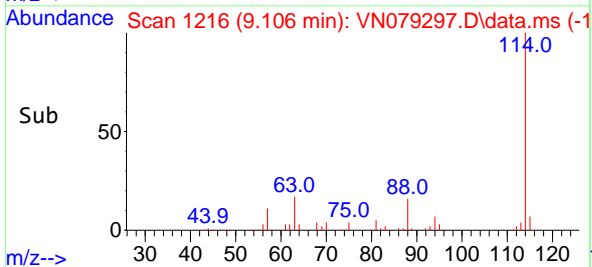
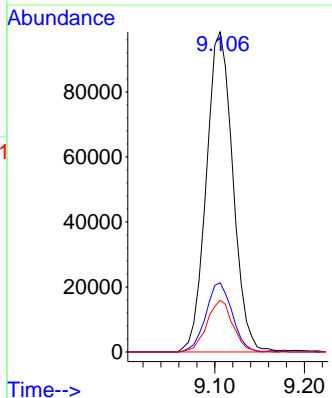
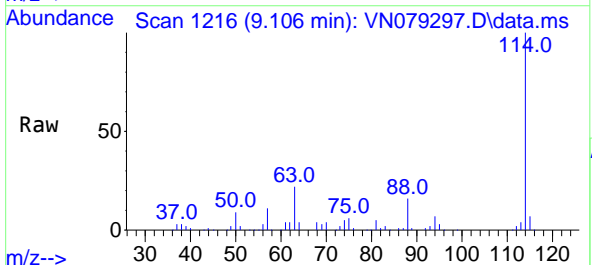
Instrument : MSVOA\_N  
 ClientSampleId :

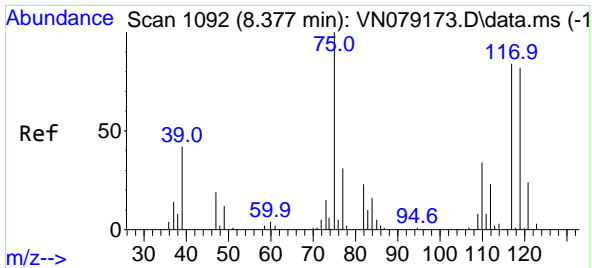
Tgt Ion: 65 Resp: 102147  
 Ion Ratio Lower Upper  
 65 100  
 67 50.1 44.4 66.6



#28  
 1,4-Difluorobenzene  
 Concen: 30.000 ug/l  
 RT: 9.106 min Scan# 1216  
 Delta R.T. -0.000 min  
 Lab File: VN079297.D  
 Acq: 19 Sep 2023 11:00

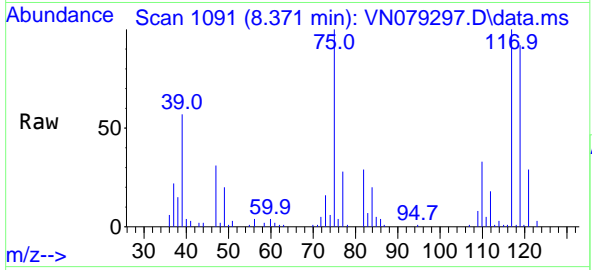
Tgt Ion:114 Resp: 202403  
 Ion Ratio Lower Upper  
 114 100  
 63 21.5 17.0 25.4  
 88 15.7 12.8 19.2



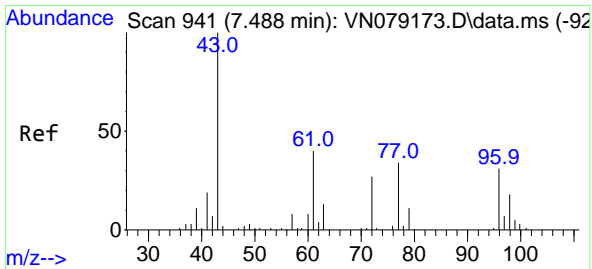
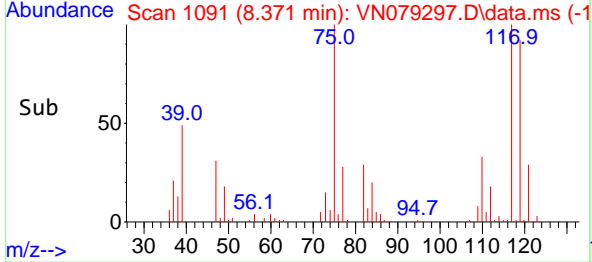
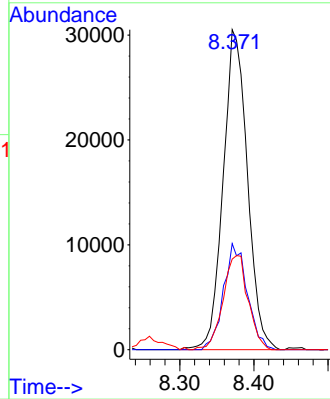


#29  
 1,1-Dichloropropene  
 Concen: 21.337 ug/l  
 RT: 8.371 min Scan# 1091  
 Delta R.T. -0.006 min  
 Lab File: VN079297.D  
 Acq: 19 Sep 2023 11:00

Instrument : MSVOA\_N  
 ClientSampleId :

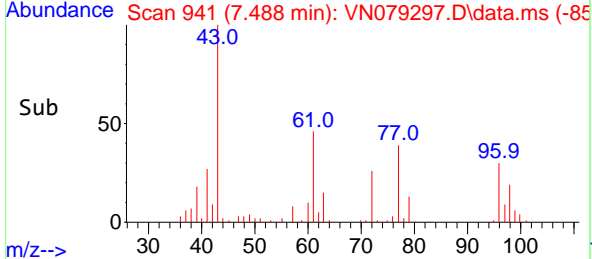
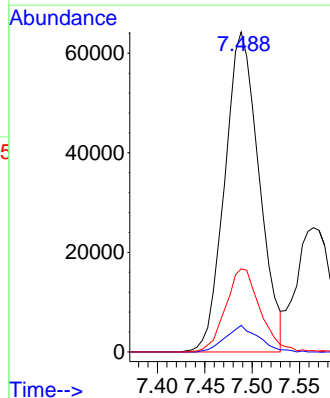
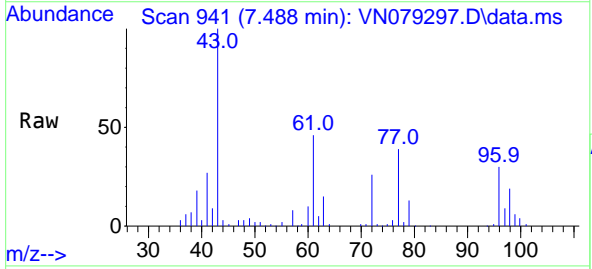


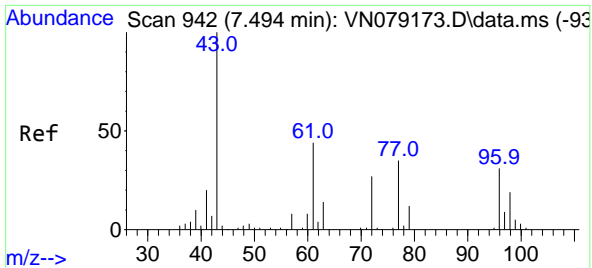
Tgt Ion: 75 Resp: 69240  
 Ion Ratio Lower Upper  
 75 100  
 110 32.5 0.0 68.4  
 77 30.2 0.0 63.2



#30  
 2-Butanone  
 Concen: 99.365 ug/l  
 RT: 7.488 min Scan# 941  
 Delta R.T. 0.000 min  
 Lab File: VN079297.D  
 Acq: 19 Sep 2023 11:00

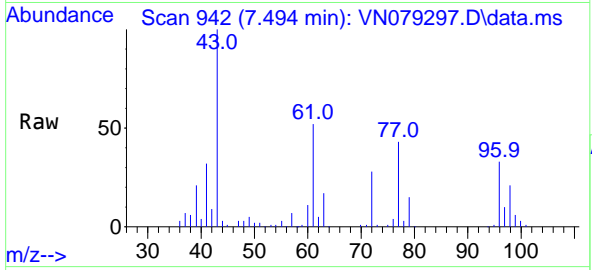
Tgt Ion: 43 Resp: 162188  
 Ion Ratio Lower Upper  
 43 100  
 57 8.0 6.8 10.2  
 72 26.0 22.4 33.6



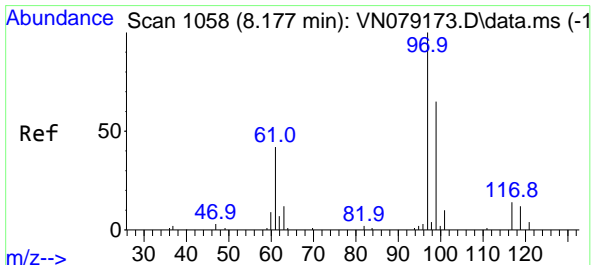
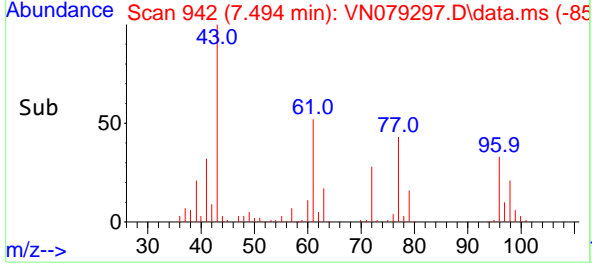
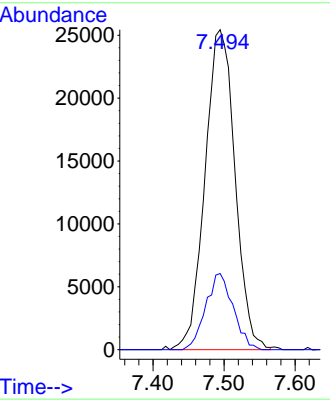


#31  
 2,2-Dichloropropane  
 Concen: 23.064 ug/l  
 RT: 7.494 min Scan# 94  
 Delta R.T. 0.000 min  
 Lab File: VN079297.D  
 Acq: 19 Sep 2023 11:00

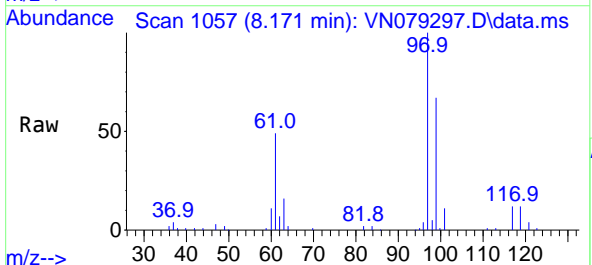
Instrument : MSVOA\_N  
 ClientSampleId :



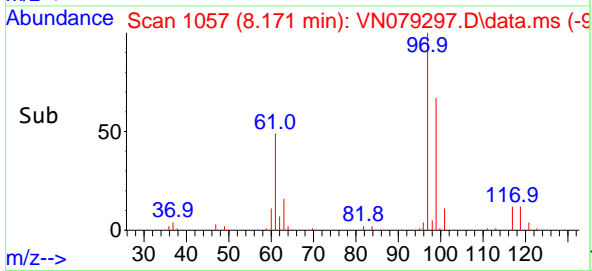
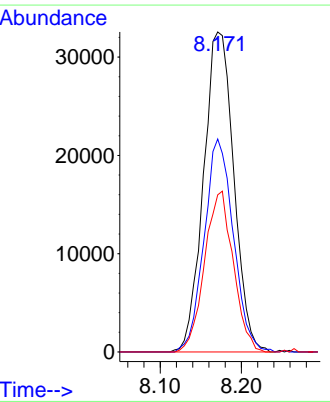
Tgt Ion: 77 Resp: 74657  
 Ion Ratio Lower Upper  
 77 100  
 97 21.8 17.8 26.8

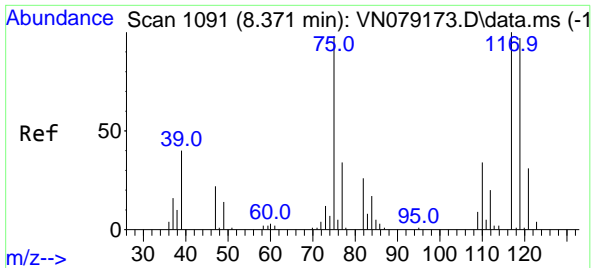


#32  
 1,1,1-Trichloroethane  
 Concen: 22.093 ug/l  
 RT: 8.171 min Scan# 1057  
 Delta R.T. -0.006 min  
 Lab File: VN079297.D  
 Acq: 19 Sep 2023 11:00



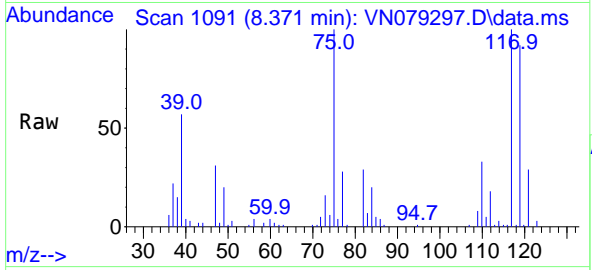
Tgt Ion: 97 Resp: 84466  
 Ion Ratio Lower Upper  
 97 100  
 99 64.0 52.0 78.0  
 61 47.6 33.4 50.0



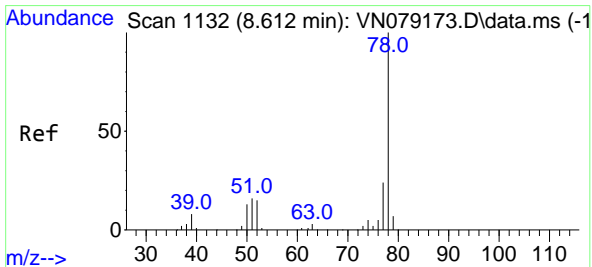
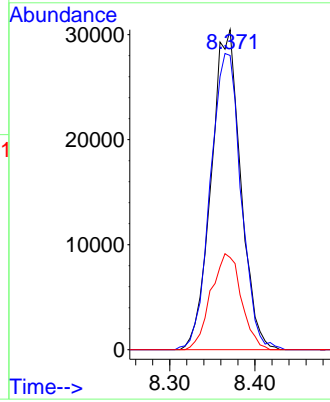
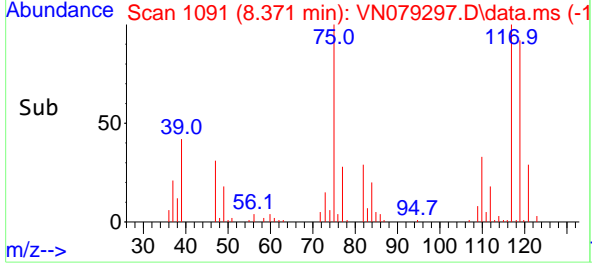


#33  
 Carbon Tetrachloride  
 Concen: 22.257 ug/l  
 RT: 8.371 min Scan# 1091  
 Delta R.T. -0.000 min  
 Lab File: VN079297.D  
 Acq: 19 Sep 2023 11:00

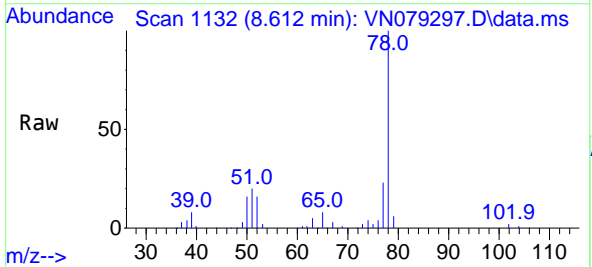
Instrument : MSVOA\_N  
 ClientSampleId :



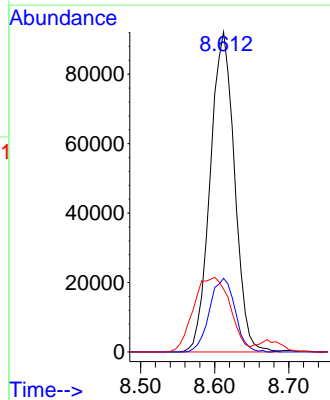
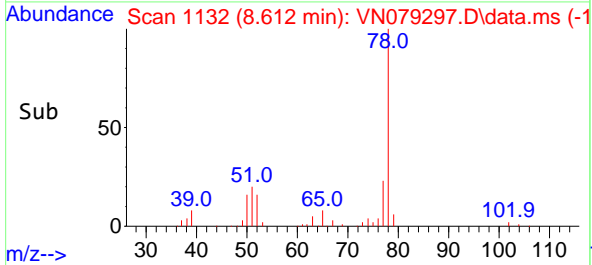
Tgt Ion:117 Resp: 73097  
 Ion Ratio Lower Upper  
 117 100  
 119 91.3 77.9 116.9  
 121 28.8 25.1 37.7

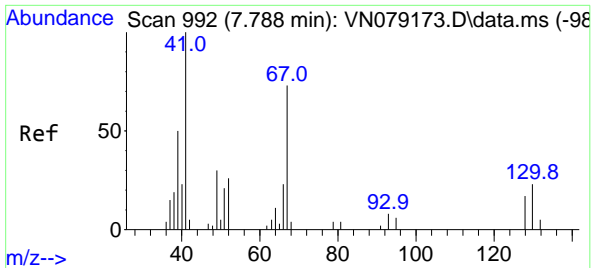


#34  
 Benzene  
 Concen: 20.374 ug/l  
 RT: 8.612 min Scan# 1132  
 Delta R.T. -0.000 min  
 Lab File: VN079297.D  
 Acq: 19 Sep 2023 11:00



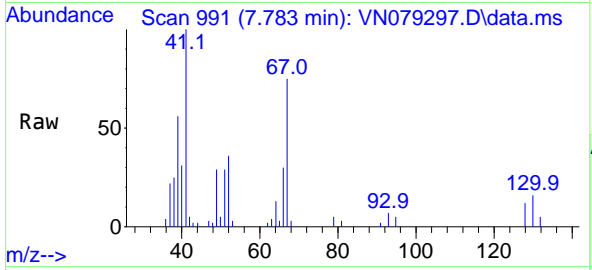
Tgt Ion: 78 Resp: 210062  
 Ion Ratio Lower Upper  
 78 100  
 77 23.0 18.9 28.3  
 51 17.2 13.1 19.7





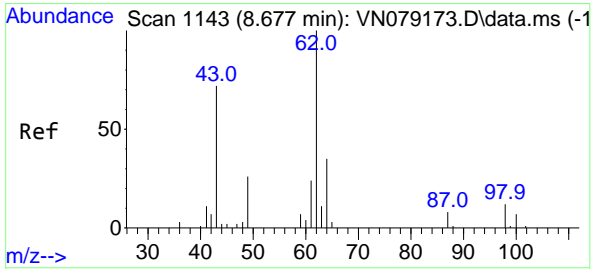
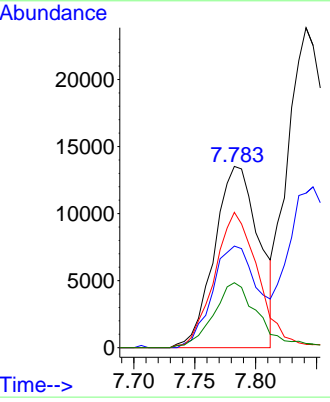
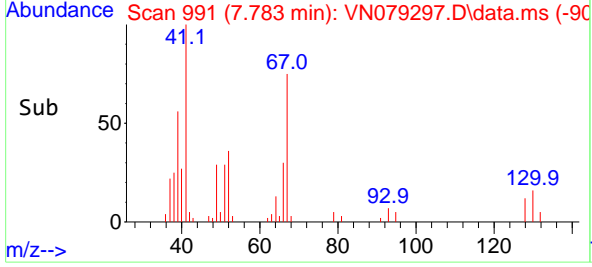
#35  
 Methacrylonitrile  
 Concen: 19.625 ug/l  
 RT: 7.783 min Scan# 91  
 Delta R.T. -0.005 min  
 Lab File: VN079297.D  
 Acq: 19 Sep 2023 11:00

Instrument : MSVOA\_N  
 ClientSampleId :

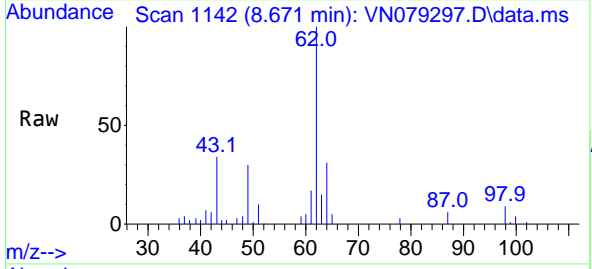


Tgt Ion: 41 Resp: 34491

Ion	Ratio	Lower	Upper
41	100		
39	56.1	24.9	74.6
67	74.7	36.7	110.1
52	35.8	13.2	39.5

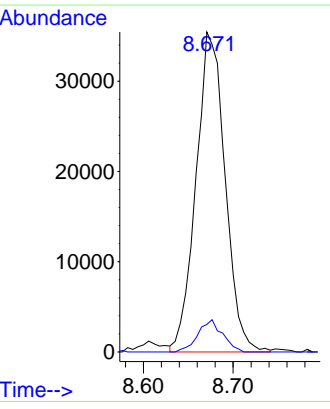
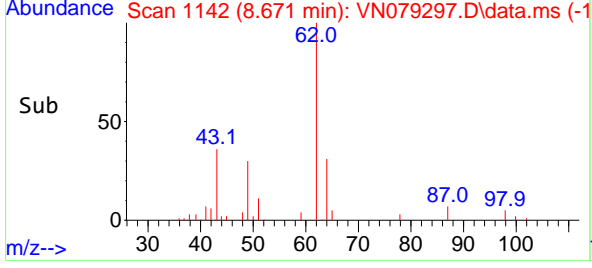


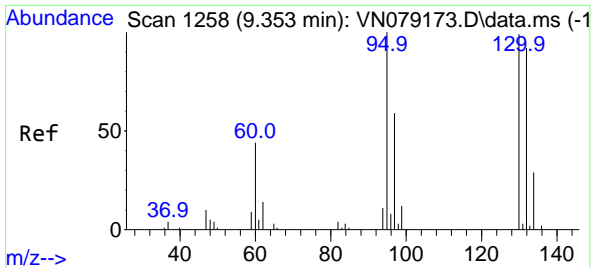
#36  
 1,2-Dichloroethane  
 Concen: 23.480 ug/l  
 RT: 8.671 min Scan# 1142  
 Delta R.T. -0.006 min  
 Lab File: VN079297.D  
 Acq: 19 Sep 2023 11:00



Tgt Ion: 62 Resp: 79840

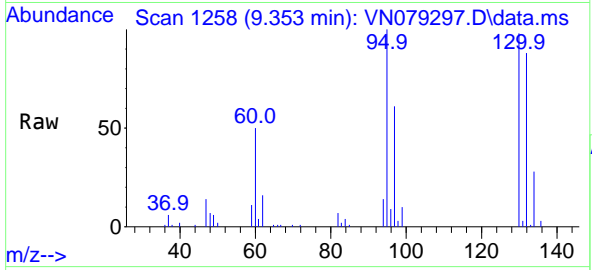
Ion	Ratio	Lower	Upper
62	100		
98	8.5	8.2	12.2



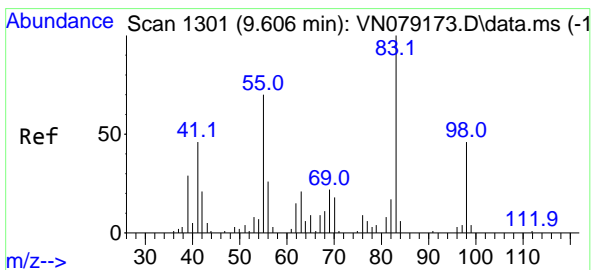
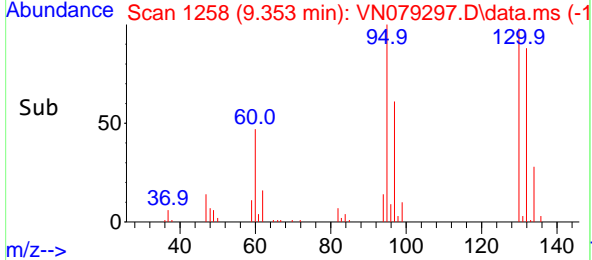
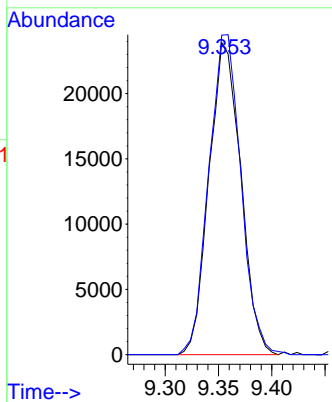


#37  
 Trichloroethene  
 Concen: 20.323 ug/l  
 RT: 9.353 min Scan# 11  
 Delta R.T. 0.000 min  
 Lab File: VN079297.D  
 Acq: 19 Sep 2023 11:00

Instrument :  
 MSVOA\_N  
 ClientSampleId :

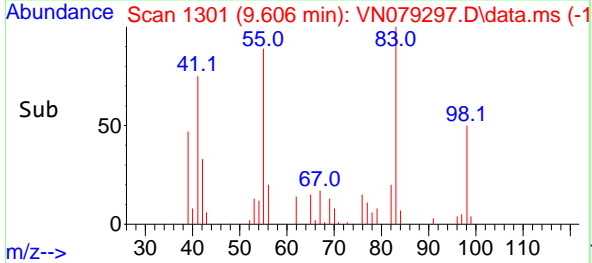
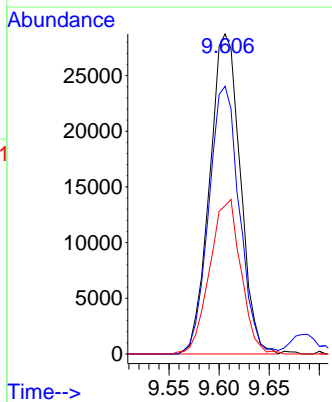
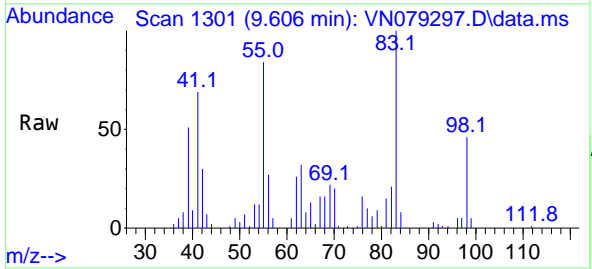


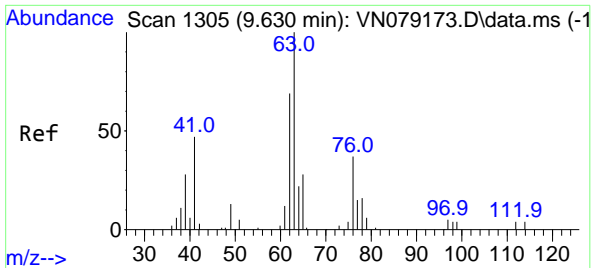
Tgt Ion:130 Resp: 49527  
 Ion Ratio Lower Upper  
 130 100  
 95 102.4 81.0 121.4



#38  
 Methylcyclohexane  
 Concen: 18.784 ug/l  
 RT: 9.606 min Scan# 1301  
 Delta R.T. -0.000 min  
 Lab File: VN079297.D  
 Acq: 19 Sep 2023 11:00

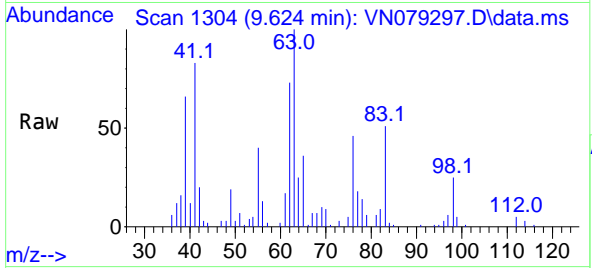
Tgt Ion: 83 Resp: 60939  
 Ion Ratio Lower Upper  
 83 100  
 55 83.7 39.1 117.2  
 98 49.0 24.1 72.4



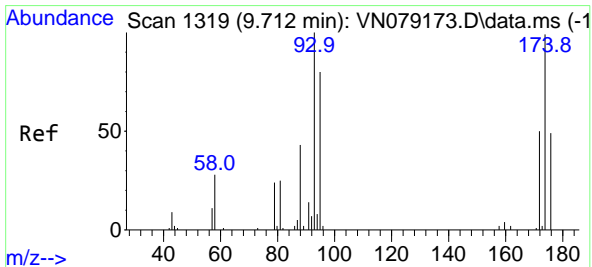
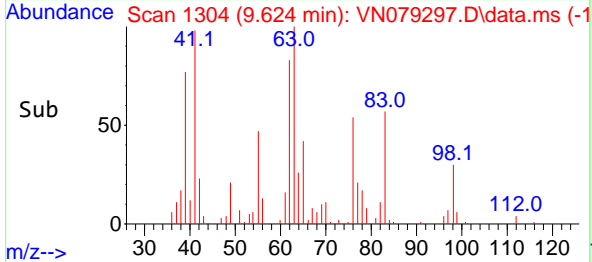
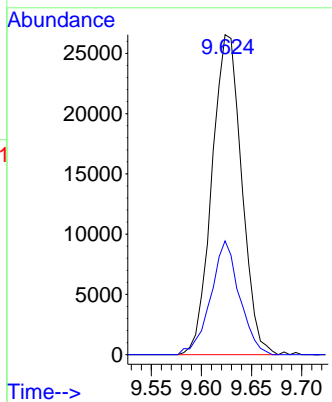


#39  
 1,2-Dichloropropane  
 Concen: 20.620 ug/l  
 RT: 9.624 min Scan# 11  
 Delta R.T. -0.006 min  
 Lab File: VN079297.D  
 Acq: 19 Sep 2023 11:00

Instrument :  
 MSVOA\_N  
 ClientSampleId :

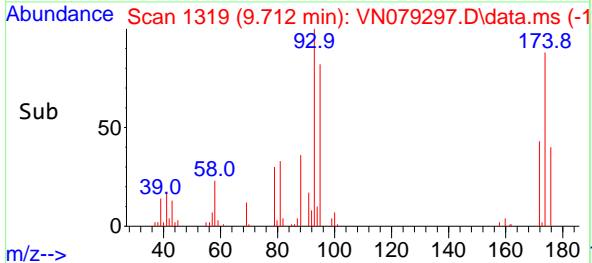
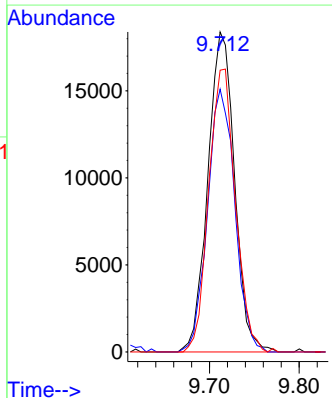
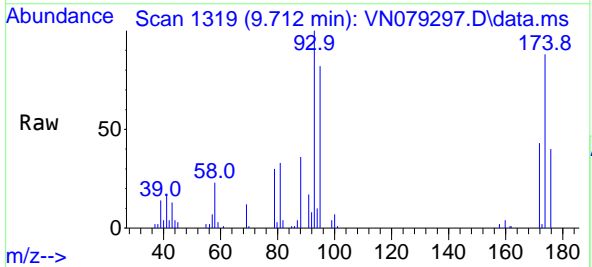


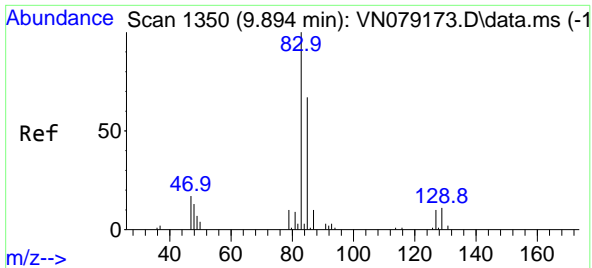
Tgt Ion: 63 Resp: 54840  
 Ion Ratio Lower Upper  
 63 100  
 65 35.6 23.4 35.0#



#40  
 Dibromomethane  
 Concen: 21.680 ug/l  
 RT: 9.712 min Scan# 1319  
 Delta R.T. -0.000 min  
 Lab File: VN079297.D  
 Acq: 19 Sep 2023 11:00

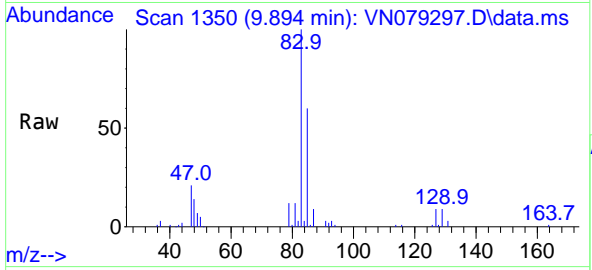
Tgt Ion: 93 Resp: 38025  
 Ion Ratio Lower Upper  
 93 100  
 95 83.8 0.0 172.4  
 174 88.3 0.0 192.4



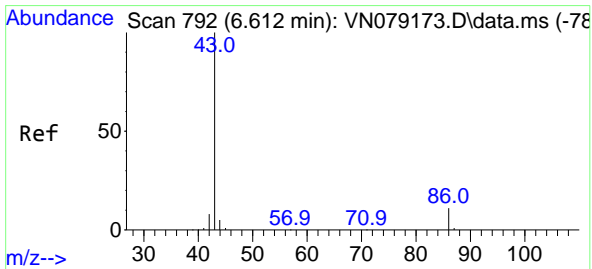
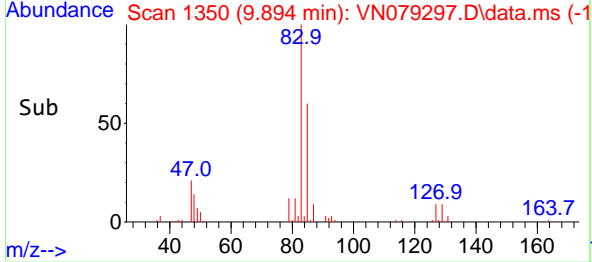
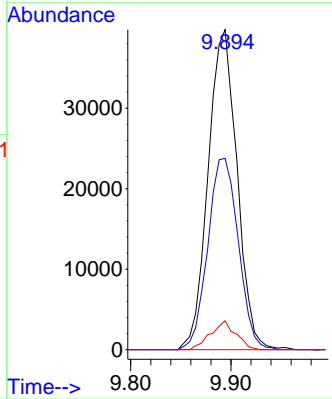


#41  
 Bromodichloromethane  
 Concen: 22.793 ug/l  
 RT: 9.894 min Scan# 11  
 Delta R.T. 0.000 min  
 Lab File: VN079297.D  
 Acq: 19 Sep 2023 11:00

Instrument :  
 MSVOA\_N  
 ClientSampleId :

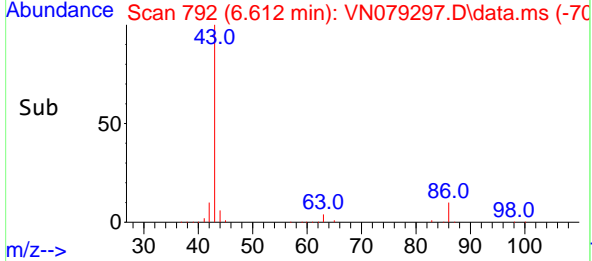
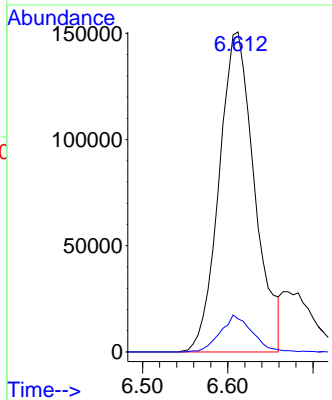
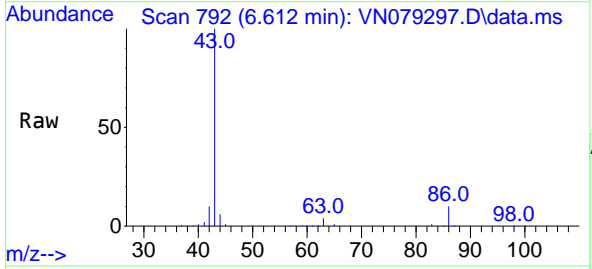


Tgt Ion: 83 Resp: 79692  
 Ion Ratio Lower Upper  
 83 100  
 85 59.8 53.4 80.2  
 127 9.0 8.3 12.5

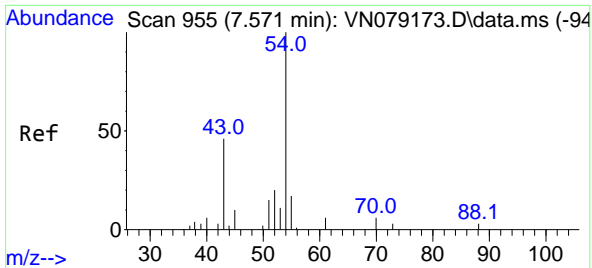


#42  
 Vinyl Acetate  
 Concen: 112.455 ug/l  
 RT: 6.612 min Scan# 792  
 Delta R.T. 0.000 min  
 Lab File: VN079297.D  
 Acq: 19 Sep 2023 11:00

Tgt Ion: 43 Resp: 435918  
 Ion Ratio Lower Upper  
 43 100  
 86 10.4 9.2 13.8



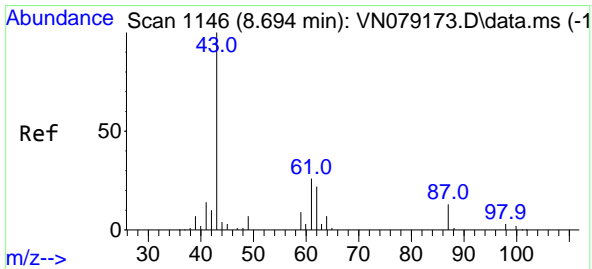
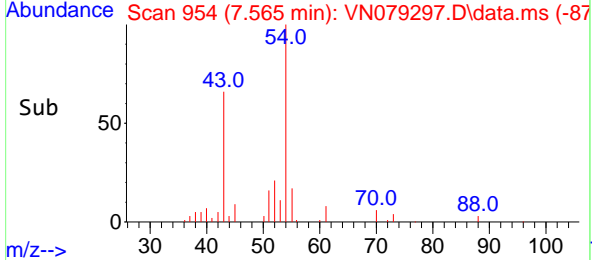
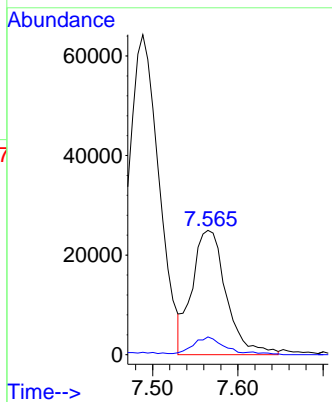
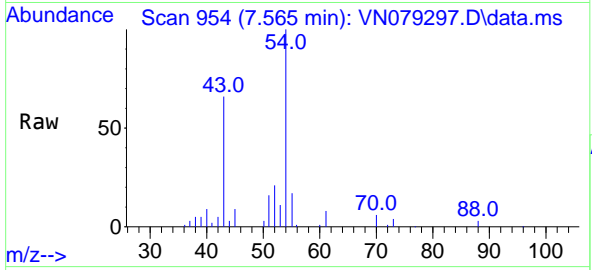




#43  
 Ethyl Acetate  
 Concen: 22.449 ug/l  
 RT: 7.565 min Scan# 91  
 Delta R.T. -0.006 min  
 Lab File: VN079297.D  
 Acq: 19 Sep 2023 11:00

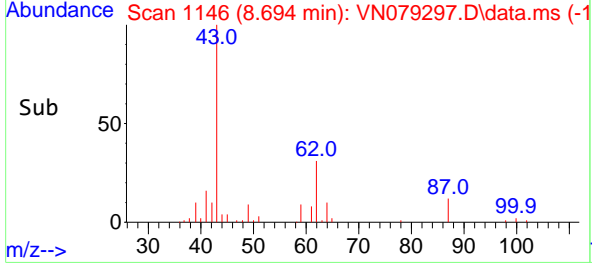
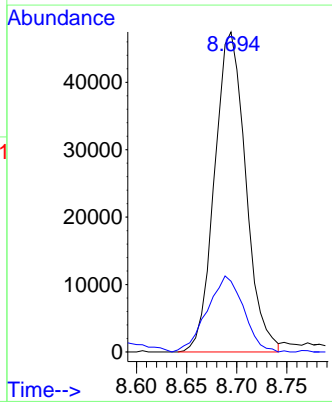
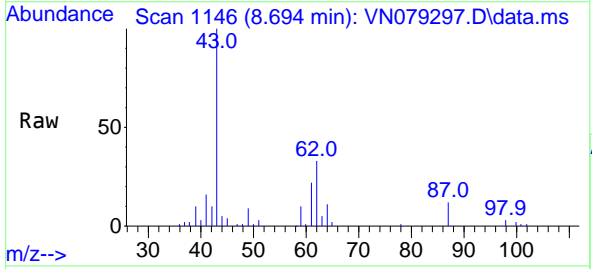
Instrument :  
 MSVOA\_N  
 ClientSampleId :

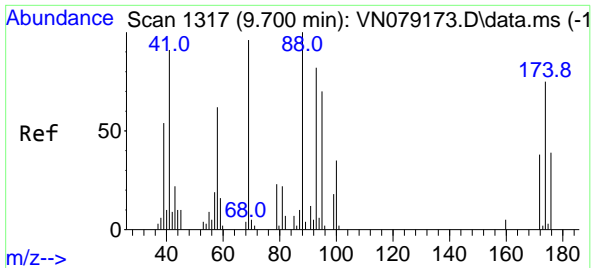
Tgt Ion: 43 Resp: 69591  
 Ion Ratio Lower Upper  
 43 100  
 45 12.5 11.1 16.7



#44  
 Isopropyl Acetate  
 Concen: 18.349 ug/l  
 RT: 8.694 min Scan# 1146  
 Delta R.T. 0.000 min  
 Lab File: VN079297.D  
 Acq: 19 Sep 2023 11:00

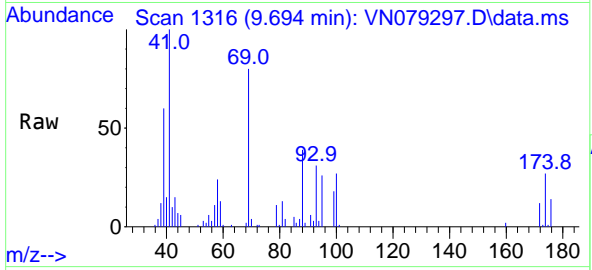
Tgt Ion: 43 Resp: 102321  
 Ion Ratio Lower Upper  
 43 100  
 61 27.6 22.6 33.8



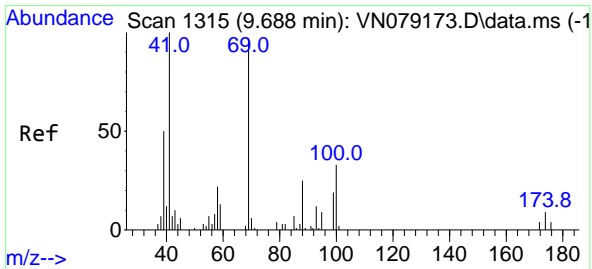
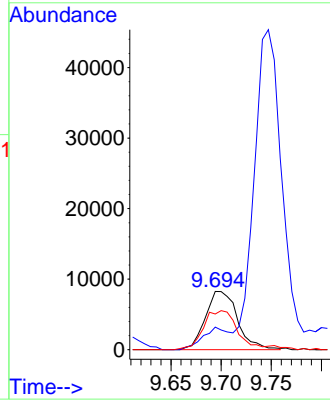
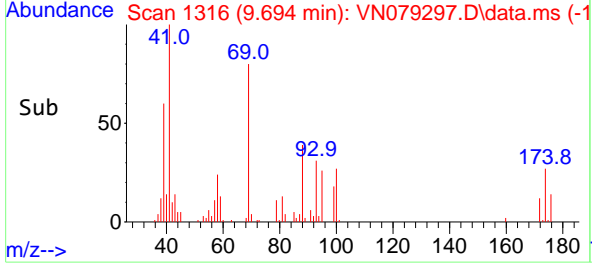


#45  
 1,4-Dioxane  
 Concen: 332.997 ug/l  
 RT: 9.694 min Scan# 11  
 Delta R.T. -0.006 min  
 Lab File: VN079297.D  
 Acq: 19 Sep 2023 11:00

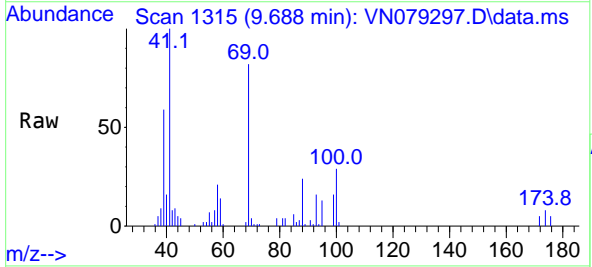
Instrument :  
 MSVOA\_N  
 ClientSampleId :



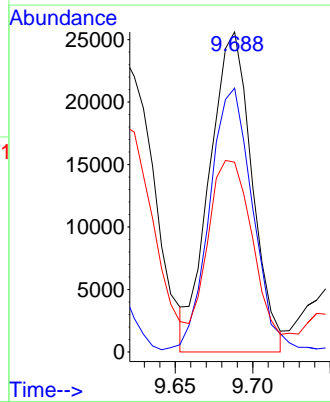
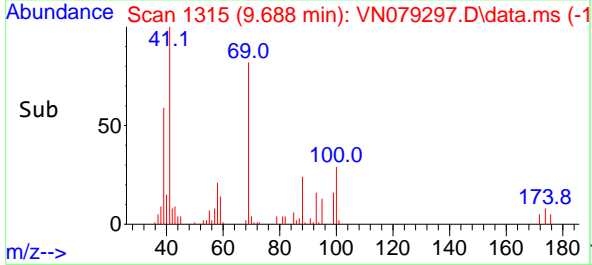
Tgt Ion: 88 Resp: 18484  
 Ion Ratio Lower Upper  
 88 100  
 43 33.1 19.9 29.9#  
 58 30.8 58.0 87.0#

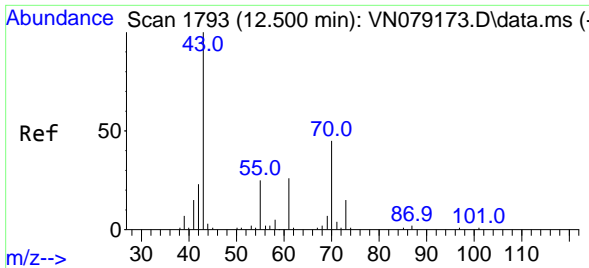


#46  
 Methyl methacrylate  
 Concen: 19.615 ug/l  
 RT: 9.688 min Scan# 1315  
 Delta R.T. 0.000 min  
 Lab File: VN079297.D  
 Acq: 19 Sep 2023 11:00



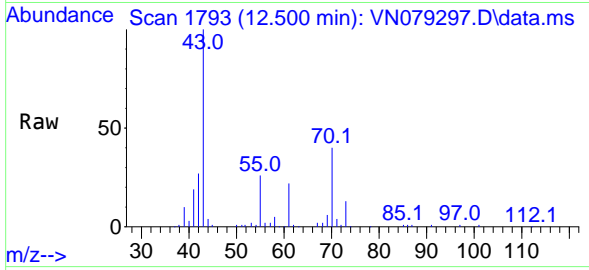
Tgt Ion: 41 Resp: 48869  
 Ion Ratio Lower Upper  
 41 100  
 69 85.8 48.1 144.3  
 39 57.5 25.8 77.3



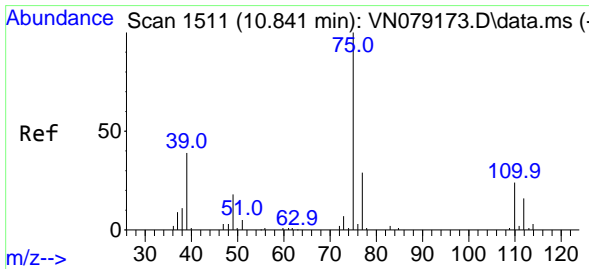
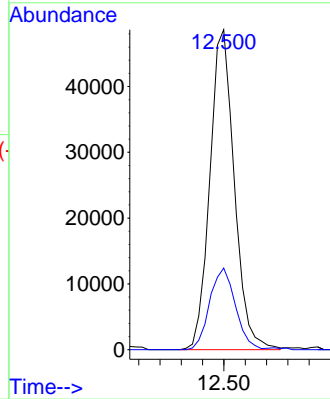
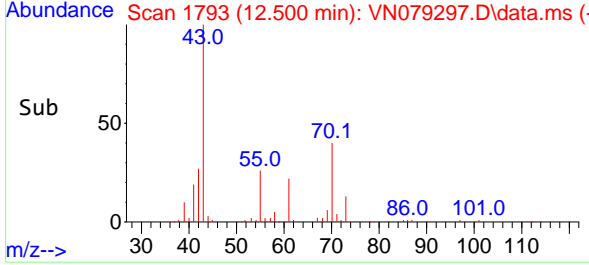


#47  
 n-amy1 Acetate  
 Concen: 19.746 ug/l  
 RT: 12.500 min Scan# 1793  
 Delta R.T. -0.000 min  
 Lab File: VN079297.D  
 Acq: 19 Sep 2023 11:00

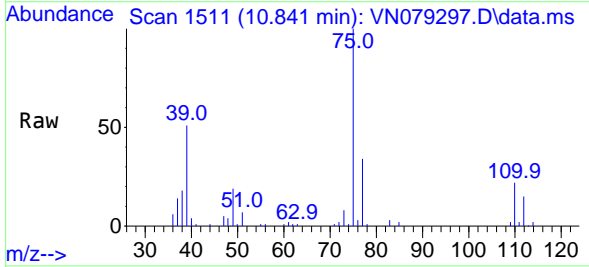
Instrument :  
 MSVOA\_N  
 ClientSampleId :



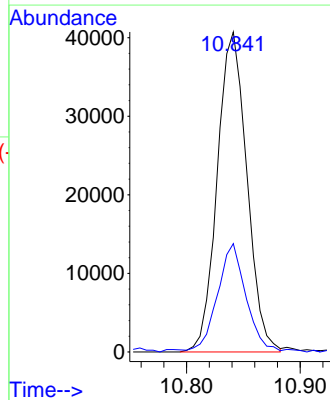
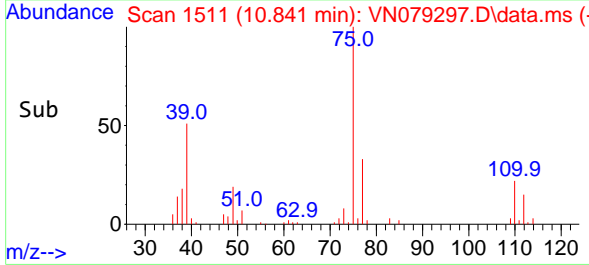
Tgt Ion: 43 Resp: 77441  
 Ion Ratio Lower Upper  
 43 100  
 55 26.8 20.5 30.7

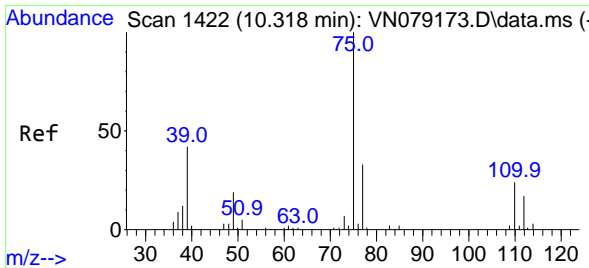


#48  
 t-1,3-Dichloropropene  
 Concen: 19.512 ug/l  
 RT: 10.841 min Scan# 1511  
 Delta R.T. 0.000 min  
 Lab File: VN079297.D  
 Acq: 19 Sep 2023 11:00



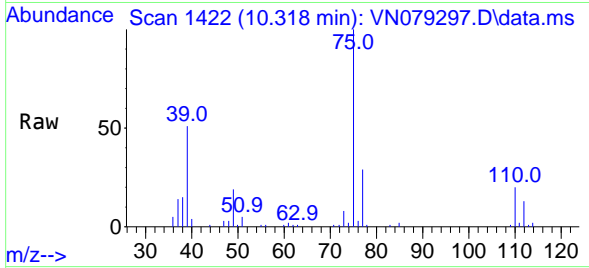
Tgt Ion: 75 Resp: 73805  
 Ion Ratio Lower Upper  
 75 100  
 77 33.4 22.9 34.3



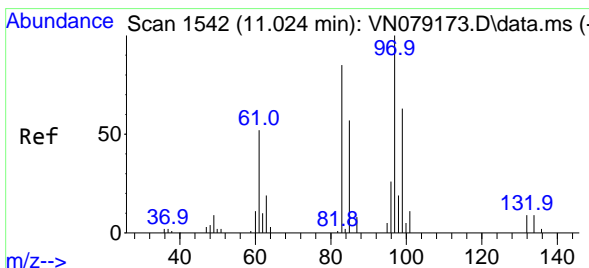
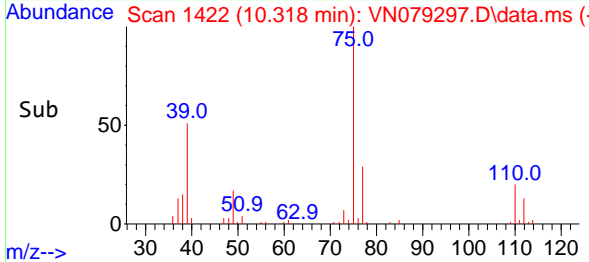
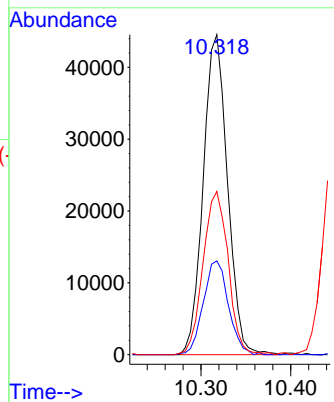


#49  
 cis-1,3-Dichloropropene  
 Concen: 21.217 ug/l  
 RT: 10.318 min Scan# 1422  
 Delta R.T. -0.000 min  
 Lab File: VN079297.D  
 Acq: 19 Sep 2023 11:00

Instrument : MSVOA\_N  
 ClientSampleId :

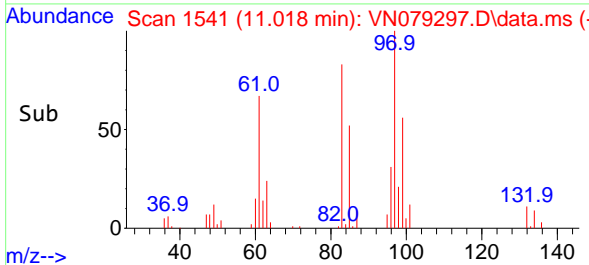
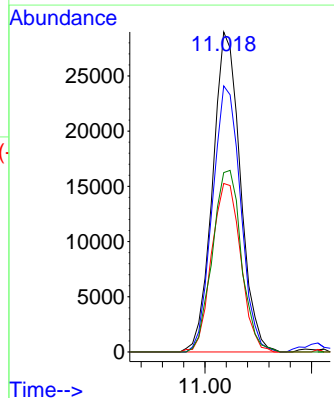
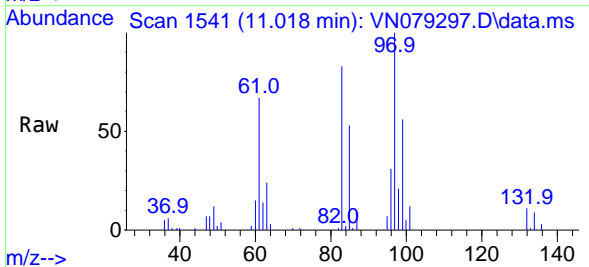


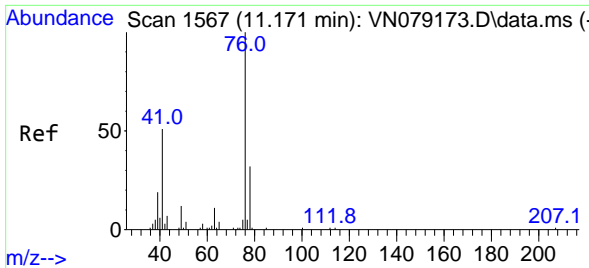
Tgt Ion: 75 Resp: 83710  
 Ion Ratio Lower Upper  
 75 100  
 77 29.3 26.2 39.2  
 39 50.5 33.8 50.8



#50  
 1,1,2-Trichloroethane  
 Concen: 21.248 ug/l  
 RT: 11.018 min Scan# 1541  
 Delta R.T. -0.006 min  
 Lab File: VN079297.D  
 Acq: 19 Sep 2023 11:00

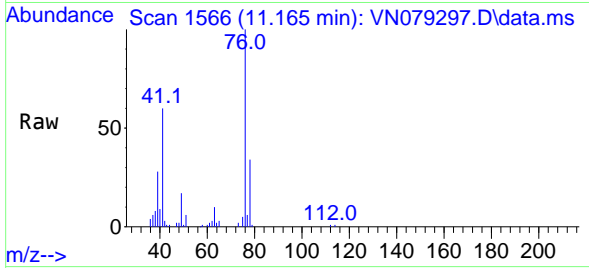
Tgt Ion: 97 Resp: 52280  
 Ion Ratio Lower Upper  
 97 100  
 83 83.2 68.9 103.3  
 85 52.6 45.3 67.9  
 99 56.1 50.4 75.6



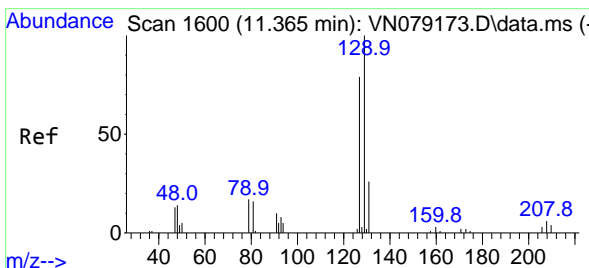
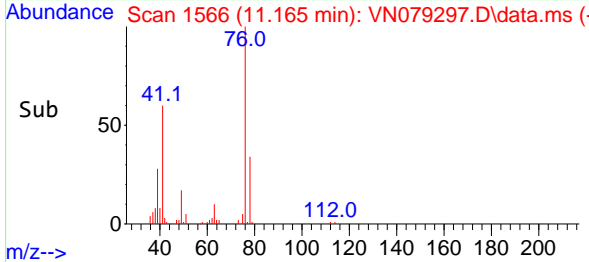
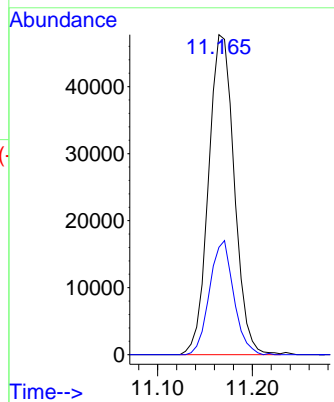


#52  
 1,3-Dichloropropane  
 Concen: 21.442 ug/l  
 RT: 11.165 min Scan# 1111  
 Delta R.T. -0.006 min  
 Lab File: VN079297.D  
 Acq: 19 Sep 2023 11:00

Instrument : MSVOA\_N  
 ClientSampleId :

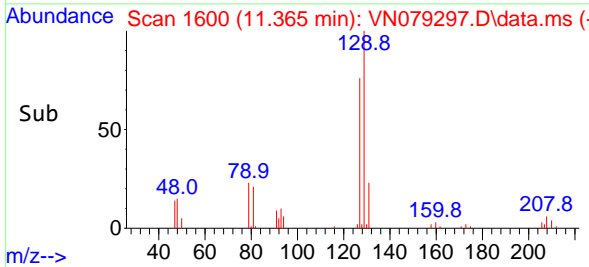
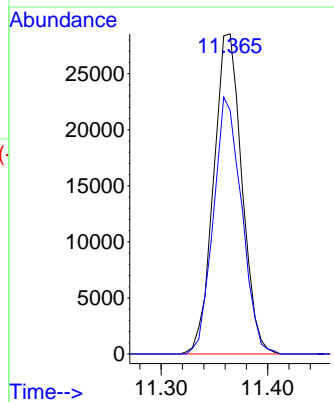
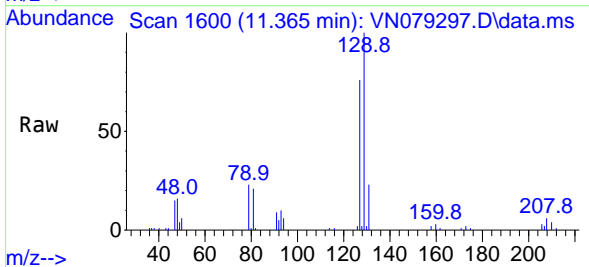


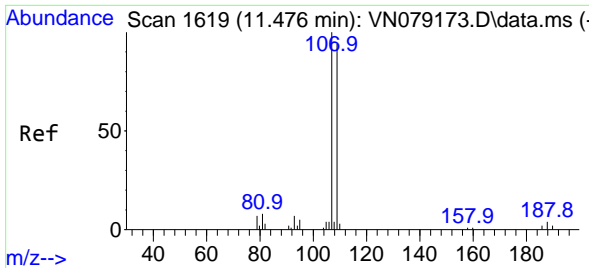
Tgt Ion: 76 Resp: 90071  
 Ion Ratio Lower Upper  
 76 100  
 78 33.3 0.0 64.2



#53  
 Dibromochloromethane  
 Concen: 20.400 ug/l  
 RT: 11.365 min Scan# 1600  
 Delta R.T. -0.000 min  
 Lab File: VN079297.D  
 Acq: 19 Sep 2023 11:00

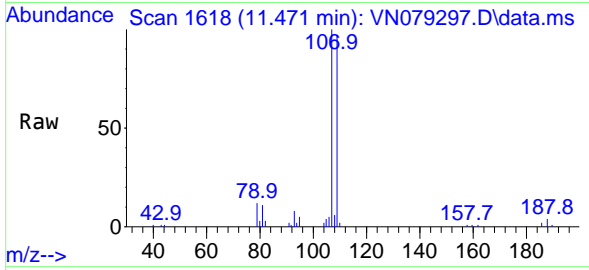
Tgt Ion:129 Resp: 52644  
 Ion Ratio Lower Upper  
 129 100  
 127 80.1 38.7 116.1



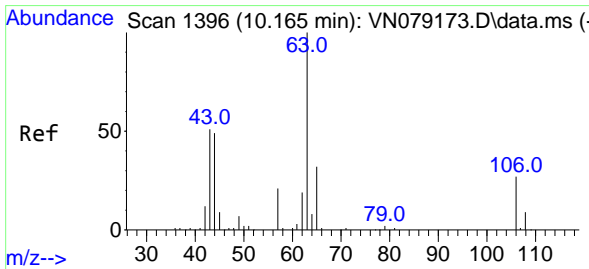
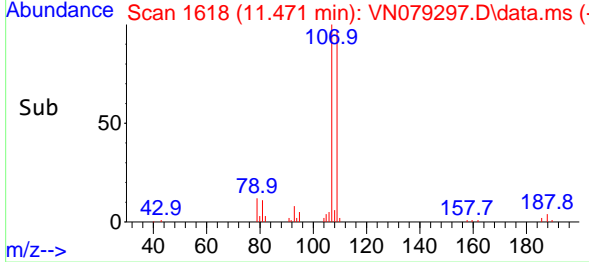
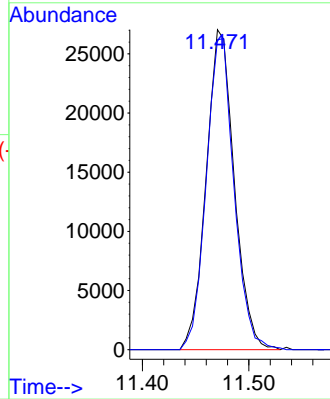


#54  
 1,2-Dibromoethane  
 Concen: 19.858 ug/l  
 RT: 11.471 min Scan# 1  
 Delta R.T. -0.005 min  
 Lab File: VN079297.D  
 Acq: 19 Sep 2023 11:00

Instrument :  
 MSVOA\_N  
 ClientSampleId :

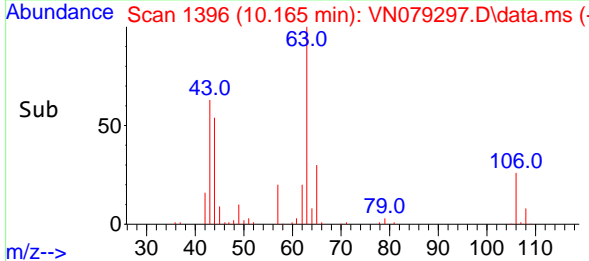
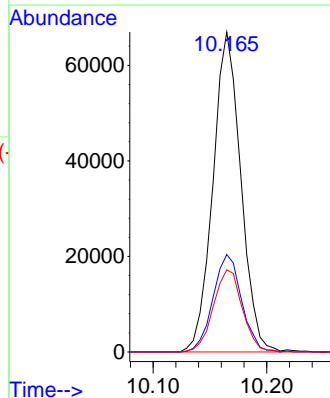
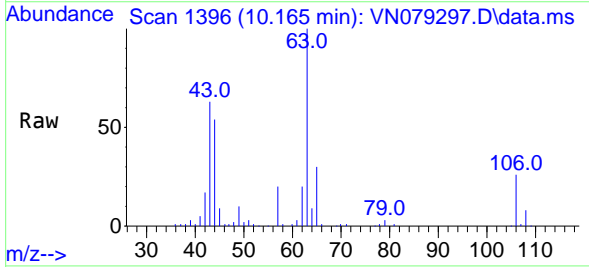


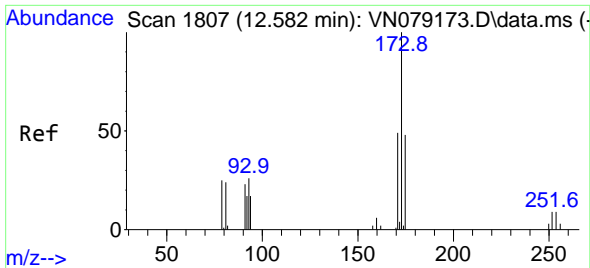
Tgt Ion:107 Resp: 49616  
 Ion Ratio Lower Upper  
 107 100  
 109 96.3 76.4 114.6



#55  
 2-Chloroethyl vinyl ether  
 Concen: 84.506 ug/l  
 RT: 10.165 min Scan# 1396  
 Delta R.T. -0.000 min  
 Lab File: VN079297.D  
 Acq: 19 Sep 2023 11:00

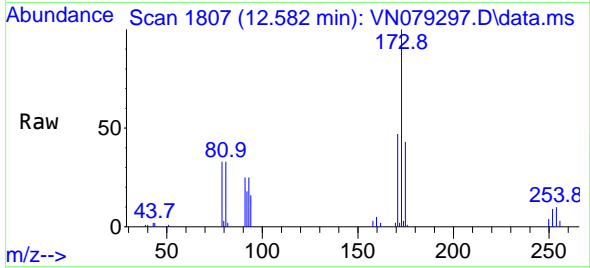
Tgt Ion: 63 Resp: 114101  
 Ion Ratio Lower Upper  
 63 100  
 65 31.2 25.7 38.5  
 106 26.6 21.9 32.9



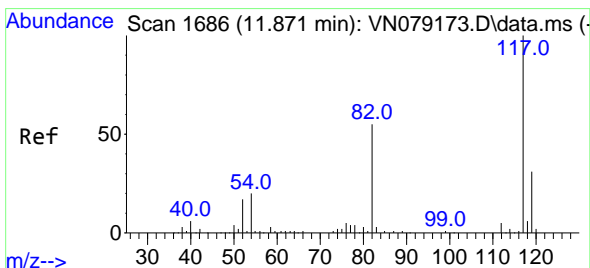
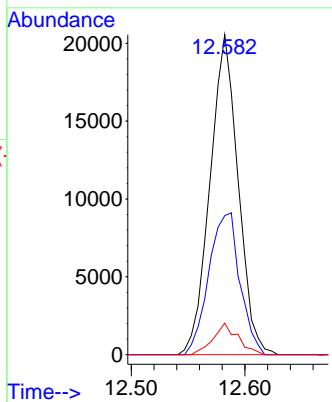
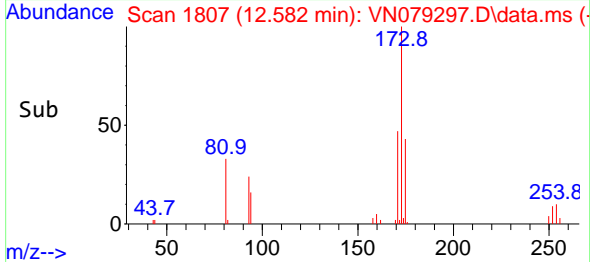


#56  
 Bromoform  
 Concen: 19.674 ug/l  
 RT: 12.582 min Scan# 1807  
 Delta R.T. 0.000 min  
 Lab File: VN079297.D  
 Acq: 19 Sep 2023 11:00

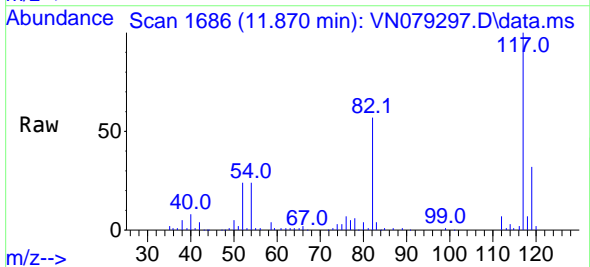
Instrument :  
 MSVOA\_N  
 ClientSampleId :



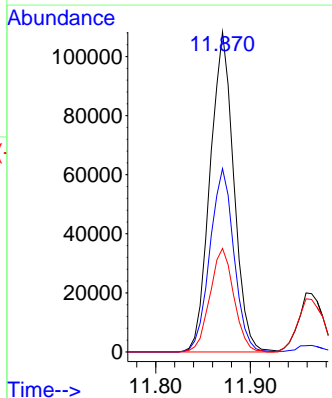
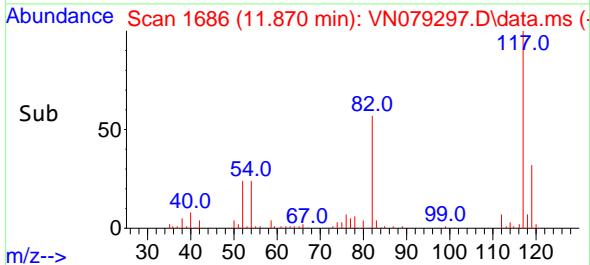
Tgt Ion:173 Resp: 35378  
 Ion Ratio Lower Upper  
 173 100  
 175 48.9 37.6 56.4  
 254 8.7 7.8 11.8

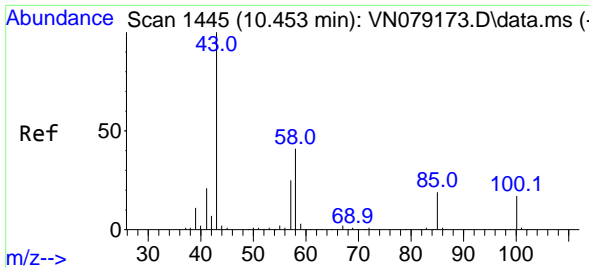


#57  
 Chlorobenzene-d5  
 Concen: 30.000 ug/l  
 RT: 11.870 min Scan# 1686  
 Delta R.T. -0.001 min  
 Lab File: VN079297.D  
 Acq: 19 Sep 2023 11:00



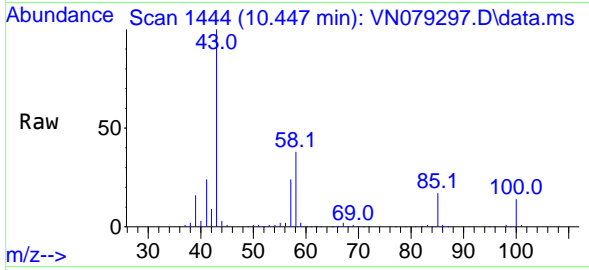
Tgt Ion:117 Resp: 188071  
 Ion Ratio Lower Upper  
 117 100  
 82 58.2 44.7 67.1  
 119 32.6 24.9 37.3





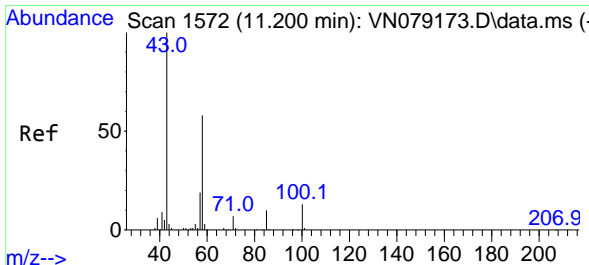
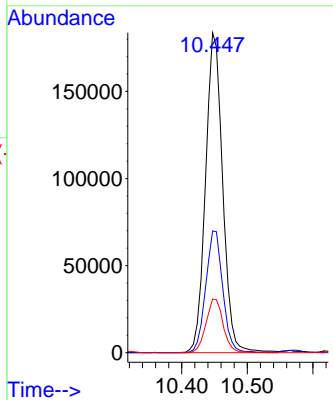
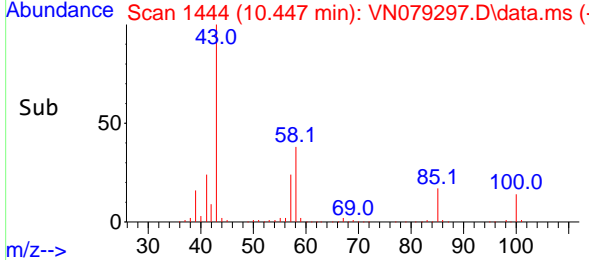
#58  
 4-Methyl-2-Pentanone  
 Concen: 97.039 ug/l  
 RT: 10.447 min Scan# 14  
 Delta R.T. -0.006 min  
 Lab File: VN079297.D  
 Acq: 19 Sep 2023 11:00

Instrument :  
 MSVOA\_N  
 ClientSampleId :

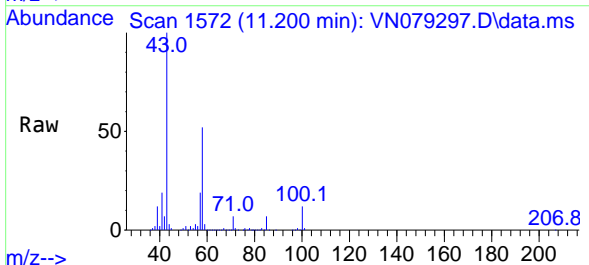


Tgt Ion: 43 Resp: 334902

Ion	Ratio	Lower	Upper
43	100		
58	37.6	33.6	50.4
85	16.7	15.0	22.4

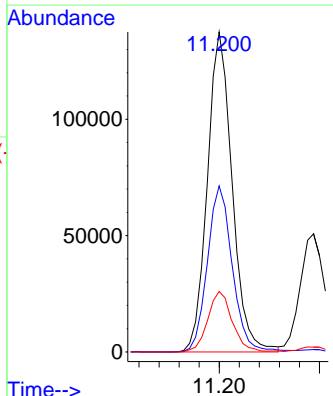
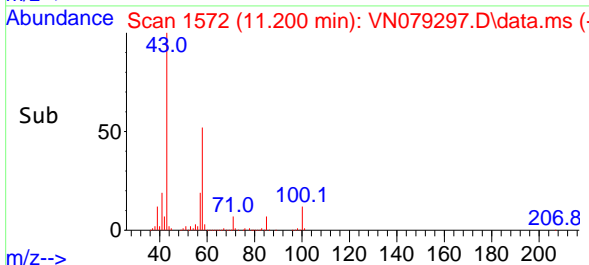


#59  
 2-Hexanone  
 Concen: 97.429 ug/l  
 RT: 11.200 min Scan# 1572  
 Delta R.T. -0.000 min  
 Lab File: VN079297.D  
 Acq: 19 Sep 2023 11:00

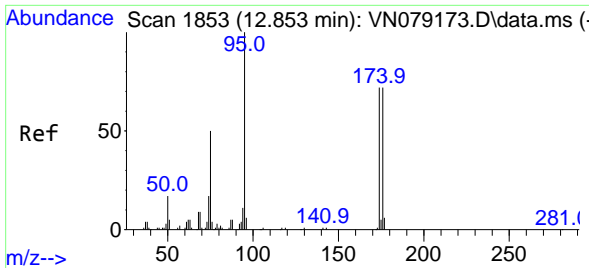


Tgt Ion: 43 Resp: 236144

Ion	Ratio	Lower	Upper
43	100		
58	52.2	46.4	69.6
57	18.6	15.3	22.9

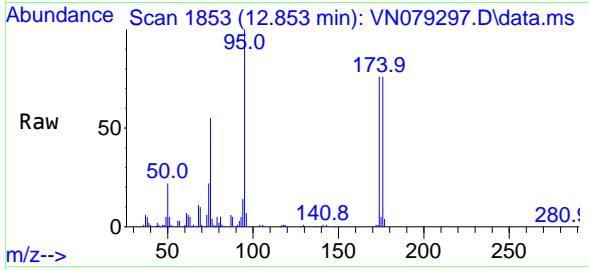




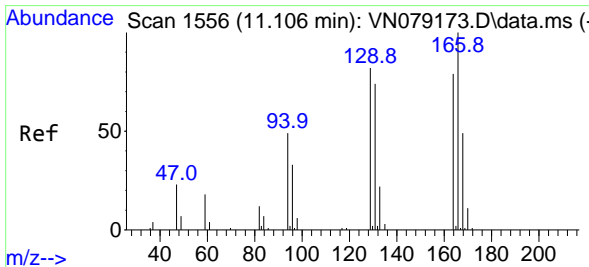
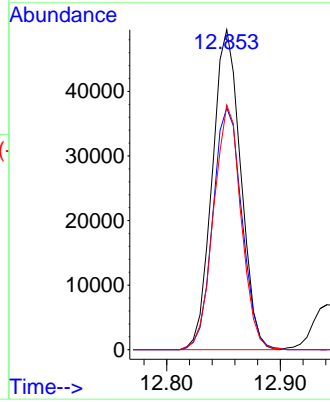
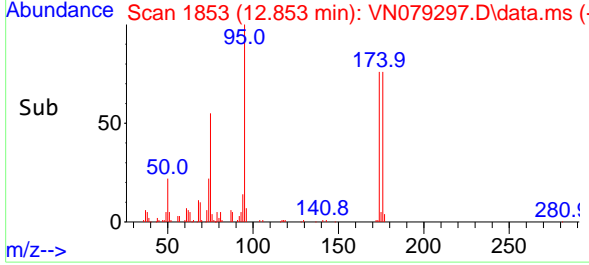


#60  
 4-Bromofluorobenzene  
 Concen: 31.043 ug/l  
 RT: 12.853 min Scan# 1853  
 Delta R.T. -0.000 min  
 Lab File: VN079297.D  
 Acq: 19 Sep 2023 11:00

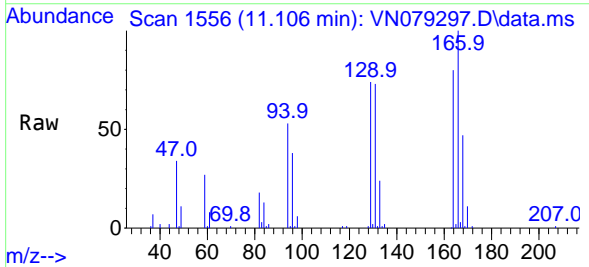
Instrument :  
 MSVOA\_N  
 ClientSampleId :



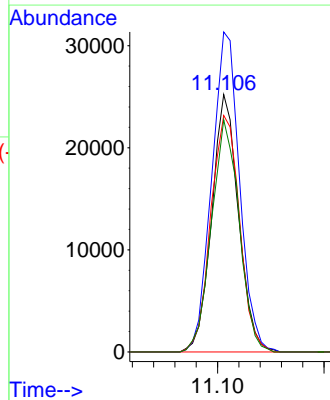
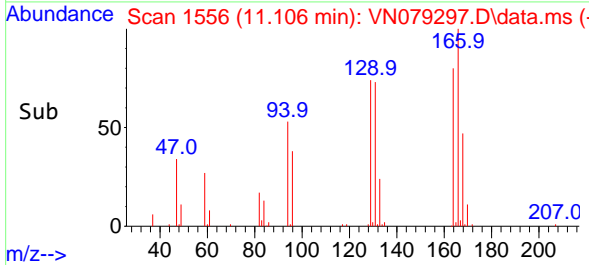
Tgt Ion: 95 Resp: 86023  
 Ion Ratio Lower Upper  
 95 100  
 174 77.4 59.5 89.3  
 176 74.5 59.1 88.7

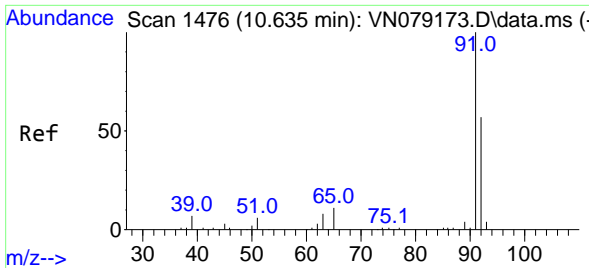


#61  
 Tetrachloroethene  
 Concen: 21.424 ug/l  
 RT: 11.106 min Scan# 1556  
 Delta R.T. -0.000 min  
 Lab File: VN079297.D  
 Acq: 19 Sep 2023 11:00



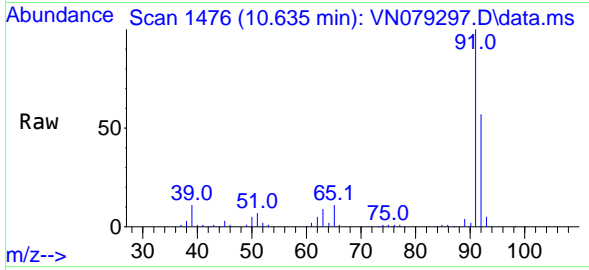
Tgt Ion:164 Resp: 43843  
 Ion Ratio Lower Upper  
 164 100  
 166 124.3 101.9 152.9  
 129 91.9 83.4 125.0  
 131 90.2 74.9 112.3



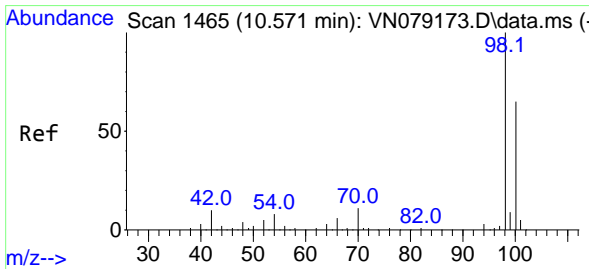
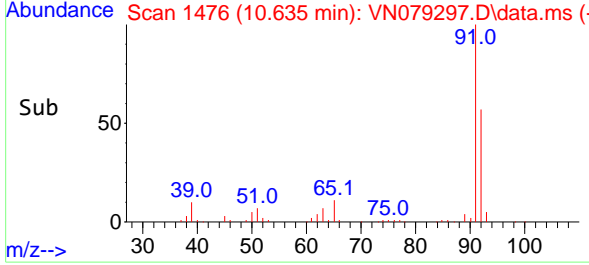
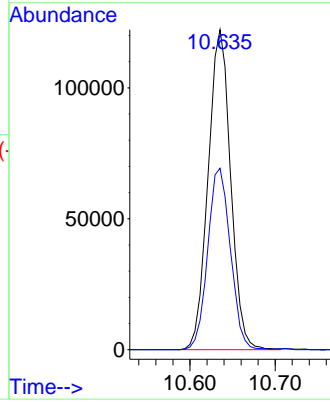


#62  
 Toluene  
 Concen: 20.493 ug/l  
 RT: 10.635 min Scan# 1476  
 Delta R.T. 0.000 min  
 Lab File: VN079297.D  
 Acq: 19 Sep 2023 11:00

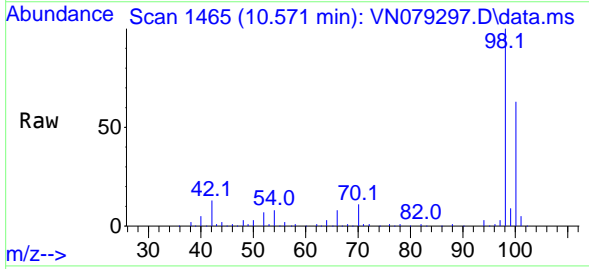
Instrument : MSVOA\_N  
 ClientSampleId :



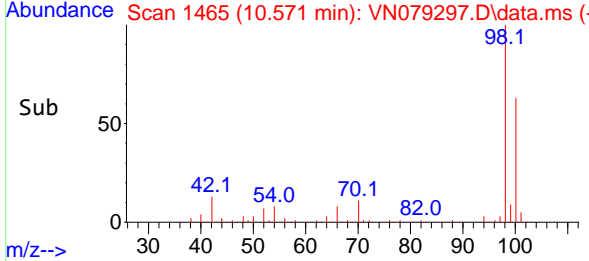
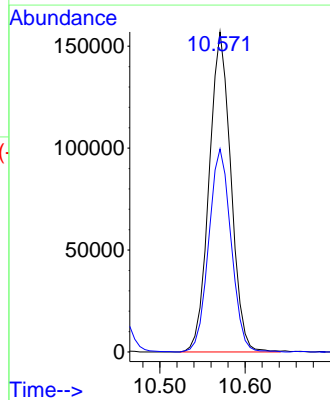
Tgt Ion: 91 Resp: 224404  
 Ion Ratio Lower Upper  
 91 100  
 92 57.0 45.7 68.5

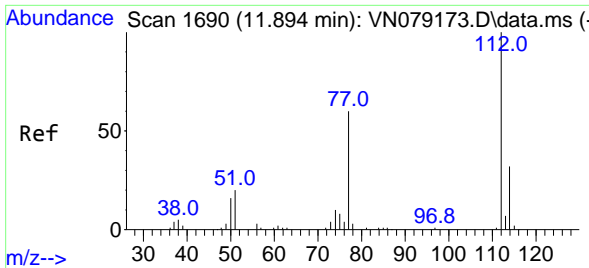


#63  
 Toluene-d8  
 Concen: 31.698 ug/l  
 RT: 10.571 min Scan# 1465  
 Delta R.T. -0.000 min  
 Lab File: VN079297.D  
 Acq: 19 Sep 2023 11:00



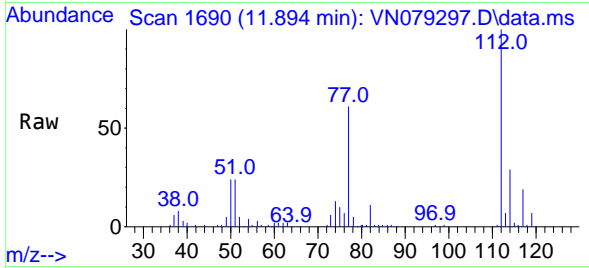
Tgt Ion: 98 Resp: 278603  
 Ion Ratio Lower Upper  
 98 100  
 100 65.1 52.5 78.7



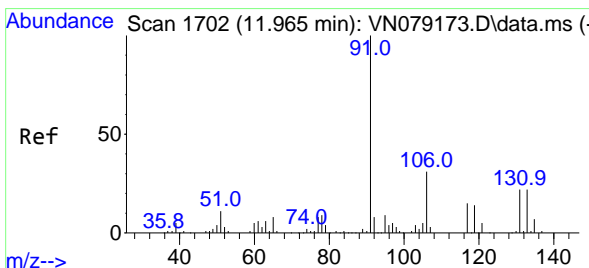
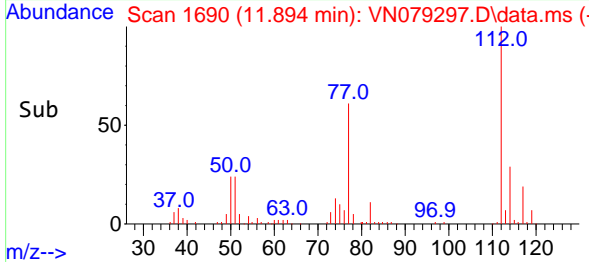
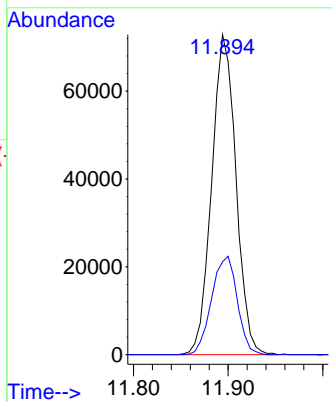


#64  
 Chlorobenzene  
 Concen: 20.316 ug/l  
 RT: 11.894 min Scan# 111  
 Delta R.T. 0.000 min  
 Lab File: VN079297.D  
 Acq: 19 Sep 2023 11:00

Instrument :  
 MSVOA\_N  
 ClientSampleId :

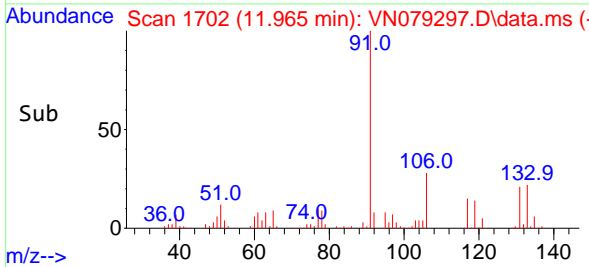
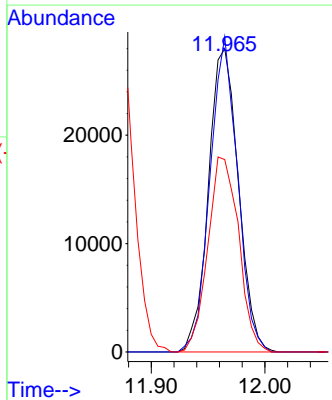
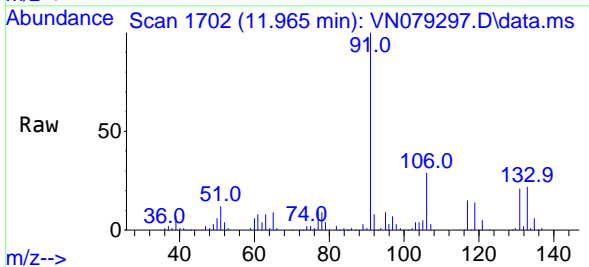


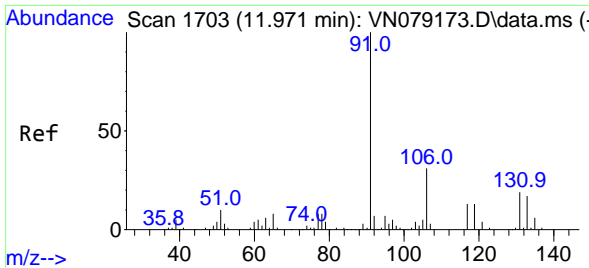
Tgt Ion:112 Resp: 129783  
 Ion Ratio Lower Upper  
 112 100  
 114 29.0 25.6 38.4



#65  
 1,1,1,2-Tetrachloroethane  
 Concen: 20.975 ug/l  
 RT: 11.965 min Scan# 1702  
 Delta R.T. -0.000 min  
 Lab File: VN079297.D  
 Acq: 19 Sep 2023 11:00

Tgt Ion:131 Resp: 51300  
 Ion Ratio Lower Upper  
 131 100  
 133 95.5 0.0 193.0  
 119 66.1 0.0 131.2

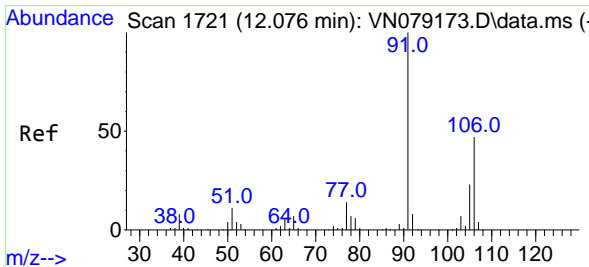
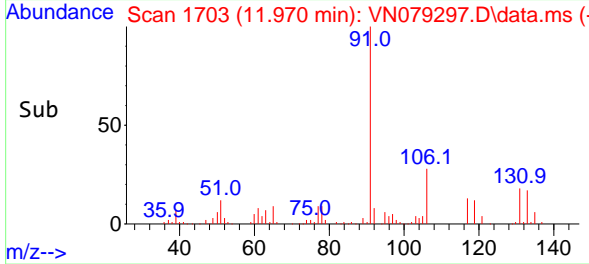
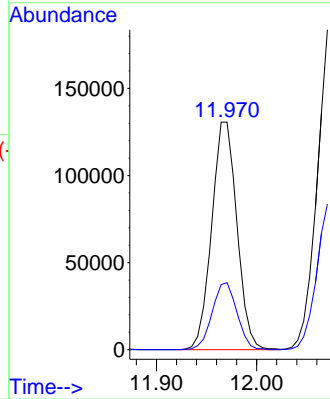
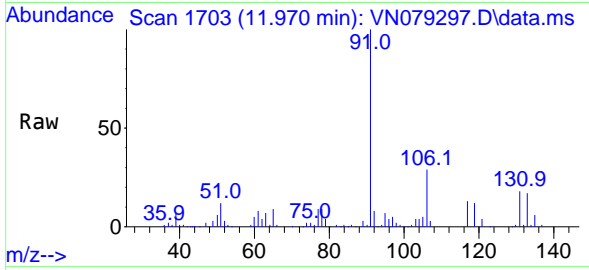




#66  
 Ethyl Benzene  
 Concen: 20.749 ug/l  
 RT: 11.970 min Scan# 1703  
 Delta R.T. -0.001 min  
 Lab File: VN079297.D  
 Acq: 19 Sep 2023 11:00

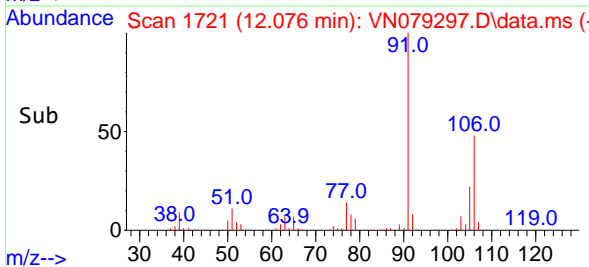
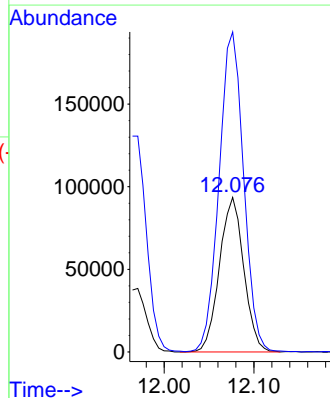
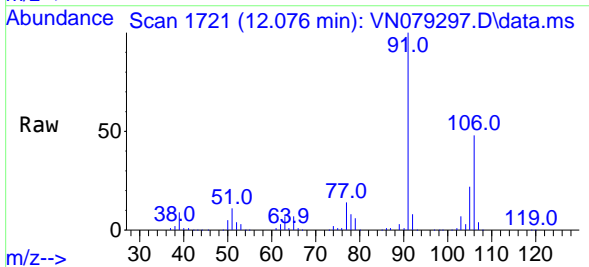
Instrument :  
 MSVOA\_N  
 ClientSampleId :

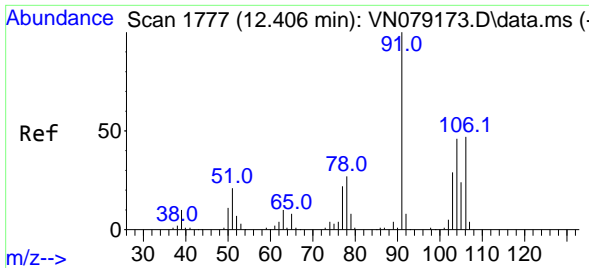
Tgt Ion: 91 Resp: 228772  
 Ion Ratio Lower Upper  
 91 100  
 106 29.4 25.0 37.6



#67  
 m/p-Xylenes  
 Concen: 42.455 ug/l  
 RT: 12.076 min Scan# 1721  
 Delta R.T. 0.000 min  
 Lab File: VN079297.D  
 Acq: 19 Sep 2023 11:00

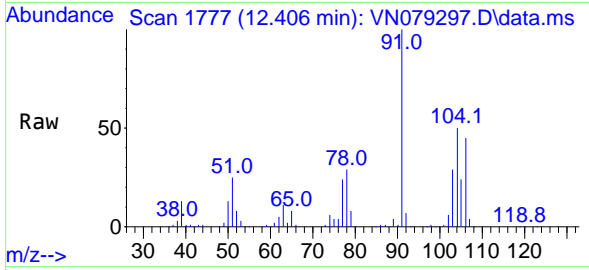
Tgt Ion: 106 Resp: 176129  
 Ion Ratio Lower Upper  
 106 100  
 91 209.1 165.2 247.8



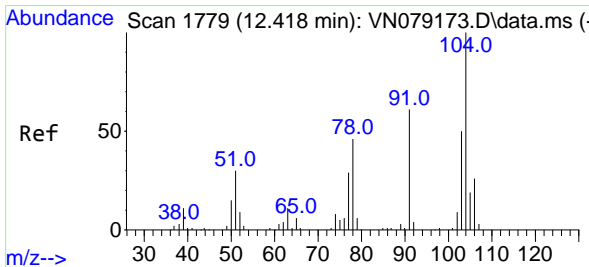
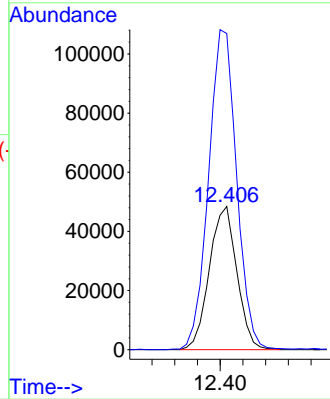
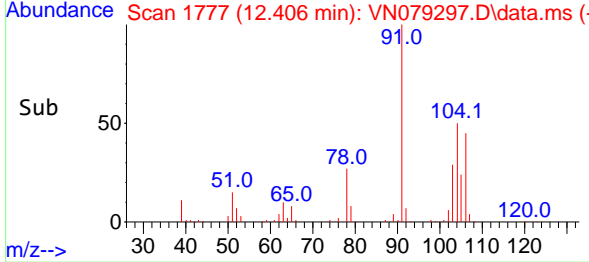


#68  
 o-Xylene  
 Concen: 20.414 ug/l  
 RT: 12.406 min Scan# 1777  
 Delta R.T. -0.000 min  
 Lab File: VN079297.D  
 Acq: 19 Sep 2023 11:00

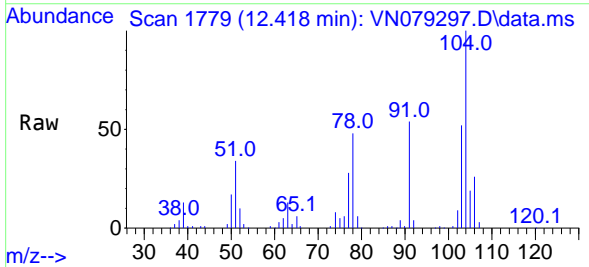
Instrument :  
 MSVOA\_N  
 ClientSampleId :



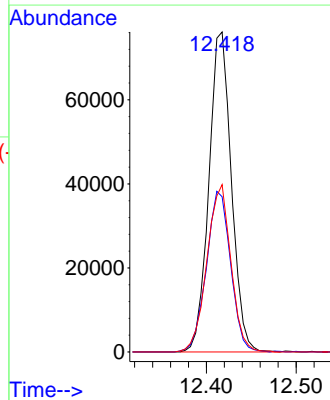
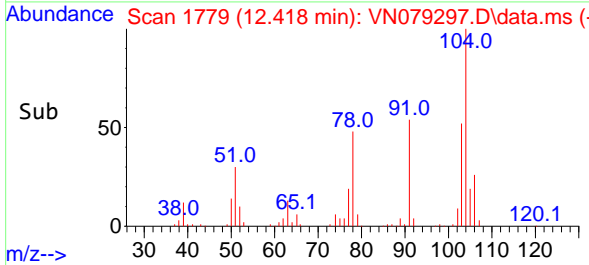
Tgt Ion:106 Resp: 81674  
 Ion Ratio Lower Upper  
 106 100  
 91 227.3 109.7 329.1

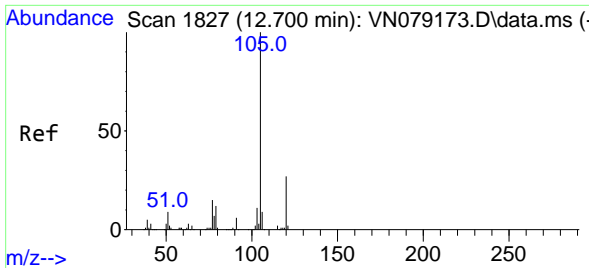


#69  
 Styrene  
 Concen: 20.806 ug/l  
 RT: 12.418 min Scan# 1779  
 Delta R.T. -0.000 min  
 Lab File: VN079297.D  
 Acq: 19 Sep 2023 11:00



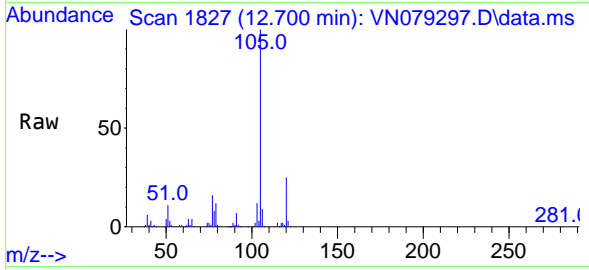
Tgt Ion:104 Resp: 132776  
 Ion Ratio Lower Upper  
 104 100  
 78 53.9 40.5 60.7  
 103 55.6 43.3 64.9



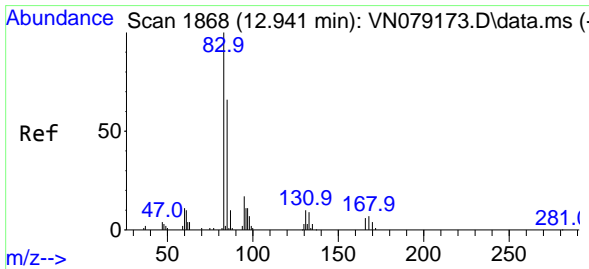
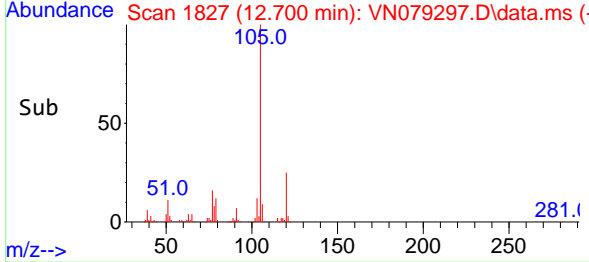
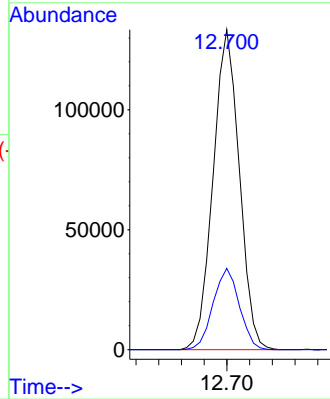


#70  
 Isopropylbenzene  
 Concen: 21.012 ug/l  
 RT: 12.700 min Scan# 1827  
 Delta R.T. -0.000 min  
 Lab File: VN079297.D  
 Acq: 19 Sep 2023 11:00

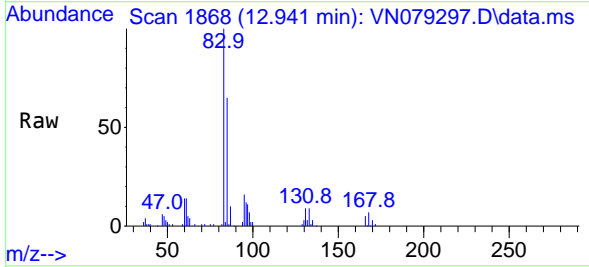
Instrument : MSVOA\_N  
 ClientSampleId :



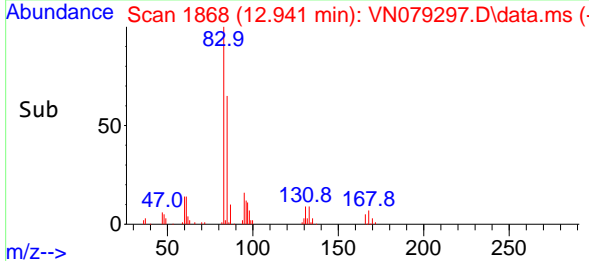
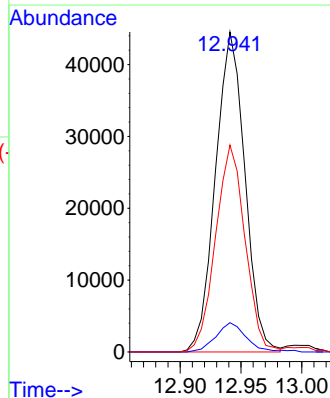
Tgt Ion:105 Resp: 213687  
 Ion Ratio Lower Upper  
 105 100  
 120 25.4 18.5 34.3

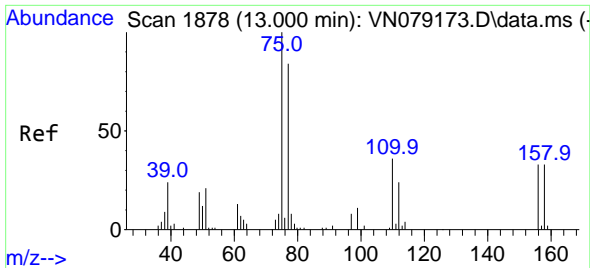


#71  
 1,1,2,2-Tetrachloroethane  
 Concen: 19.698 ug/l  
 RT: 12.941 min Scan# 1868  
 Delta R.T. 0.000 min  
 Lab File: VN079297.D  
 Acq: 19 Sep 2023 11:00



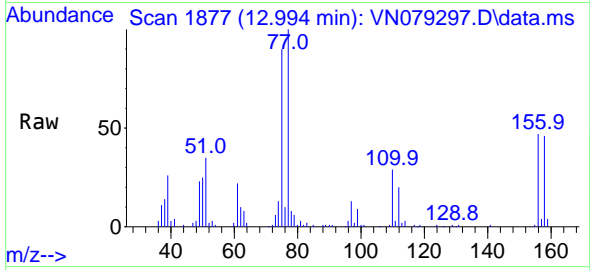
Tgt Ion: 83 Resp: 74938  
 Ion Ratio Lower Upper  
 83 100  
 131 9.3 4.9 14.6  
 85 64.7 33.1 99.3



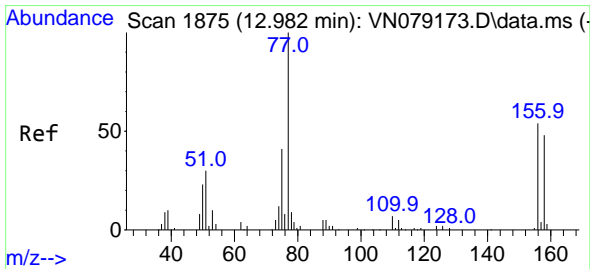
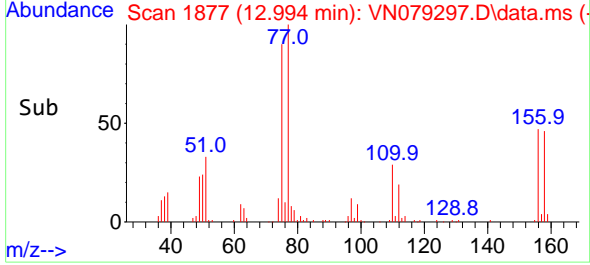
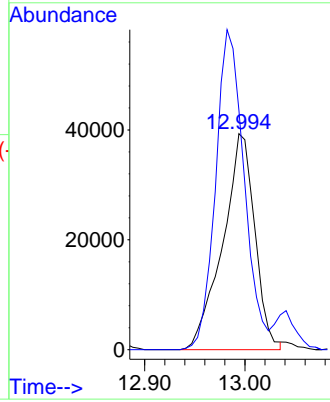


#72  
 1,2,3-Trichloropropane  
 Concen: 27.368 ug/l  
 RT: 12.994 min Scan# 1877  
 Delta R.T. -0.006 min  
 Lab File: VN079297.D  
 Acq: 19 Sep 2023 11:00

Instrument : MSVOA\_N  
 ClientSampleId :

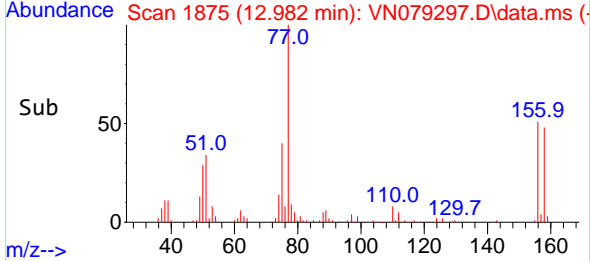
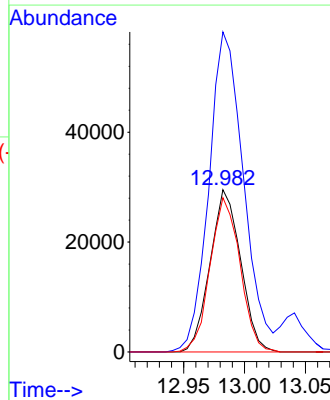
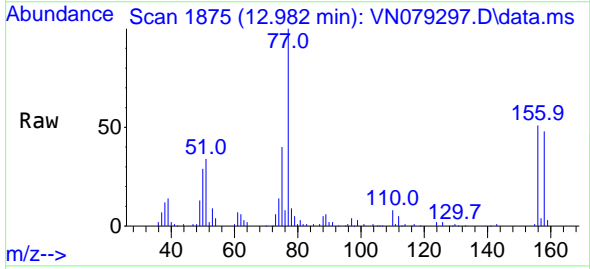


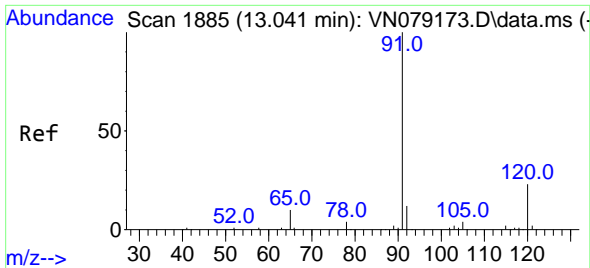
Tgt Ion: 75 Resp: 87606  
 Ion Ratio Lower Upper  
 75 100  
 77 131.3 0.0 252.2



#73  
 Bromobenzene  
 Concen: 20.320 ug/l  
 RT: 12.982 min Scan# 1875  
 Delta R.T. 0.000 min  
 Lab File: VN079297.D  
 Acq: 19 Sep 2023 11:00

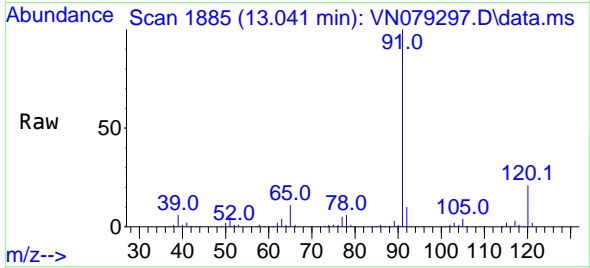
Tgt Ion:156 Resp: 51620  
 Ion Ratio Lower Upper  
 156 100  
 77 222.9 0.0 446.6  
 158 93.1 0.0 188.6



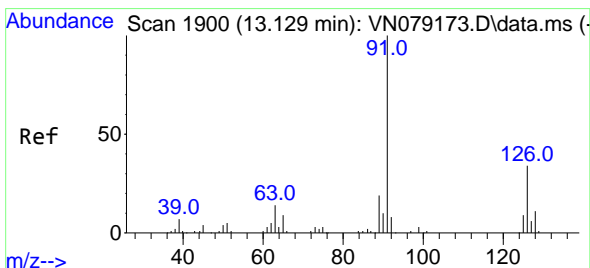
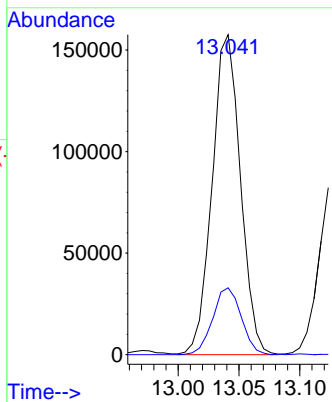
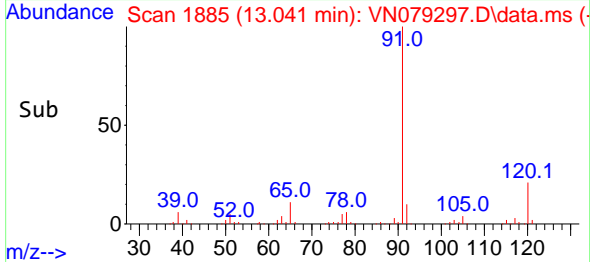


#74  
 n-propylbenzene  
 Concen: 21.985 ug/l  
 RT: 13.041 min Scan# 1885  
 Delta R.T. 0.000 min  
 Lab File: VN079297.D  
 Acq: 19 Sep 2023 11:00

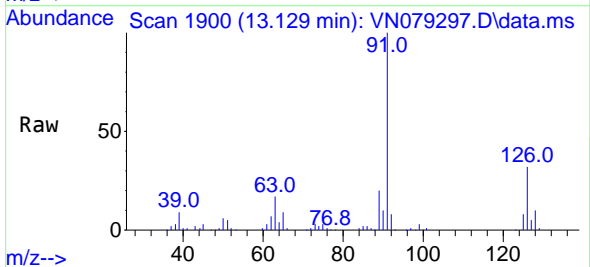
Instrument :  
 MSVOA\_N  
 ClientSampleId :



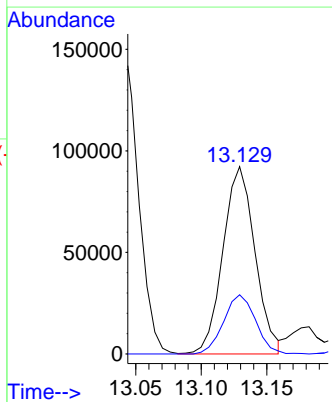
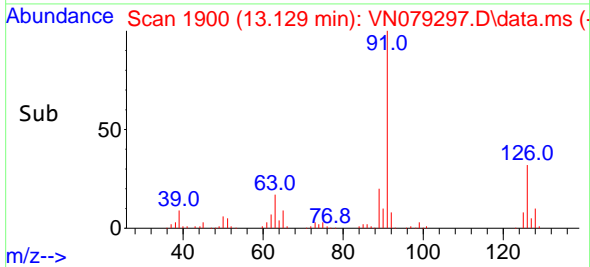
Tgt Ion: 91 Resp: 254743  
 Ion Ratio Lower Upper  
 91 100  
 120 21.0 0.0 44.0



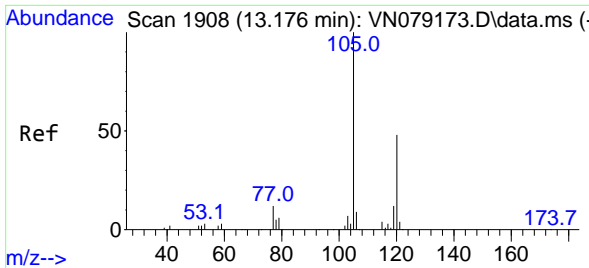
#75  
 2-Chlorotoluene  
 Concen: 21.156 ug/l  
 RT: 13.129 min Scan# 1900  
 Delta R.T. 0.000 min  
 Lab File: VN079297.D  
 Acq: 19 Sep 2023 11:00



Tgt Ion: 91 Resp: 157185  
 Ion Ratio Lower Upper  
 91 100  
 126 31.4 0.0 65.4

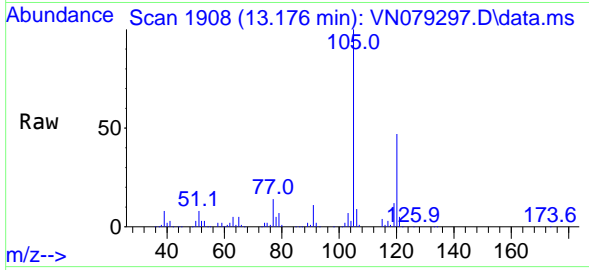




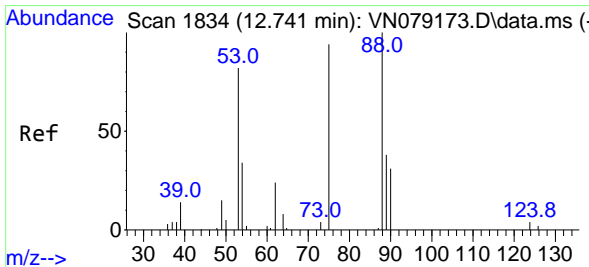
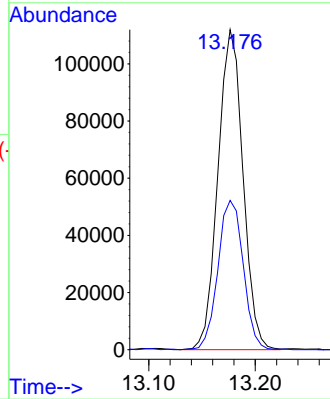
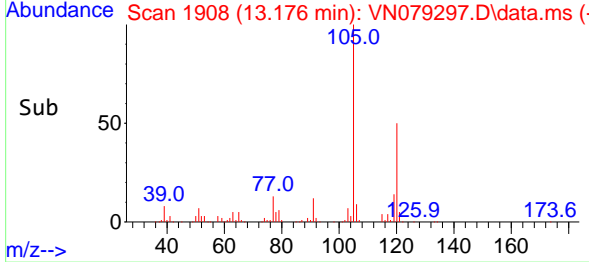


#76  
 1,3,5-Trimethylbenzene  
 Concen: 21.707 ug/l  
 RT: 13.176 min Scan# 1908  
 Delta R.T. 0.000 min  
 Lab File: VN079297.D  
 Acq: 19 Sep 2023 11:00

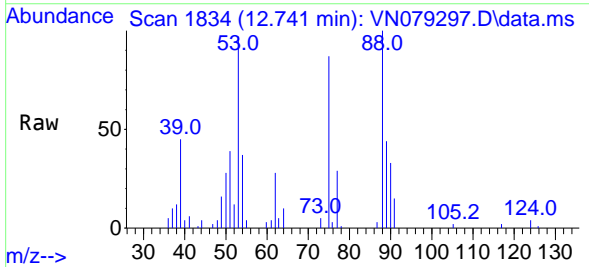
Instrument : MSVOA\_N  
 ClientSampleId :



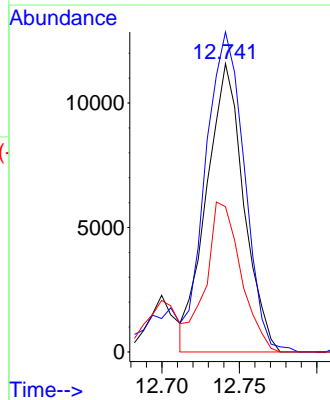
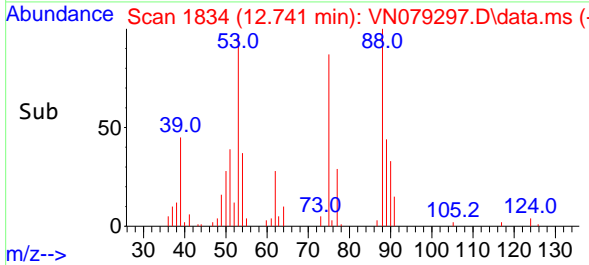
Tgt Ion:105 Resp: 182528  
 Ion Ratio Lower Upper  
 105 100  
 120 47.2 0.0 95.6

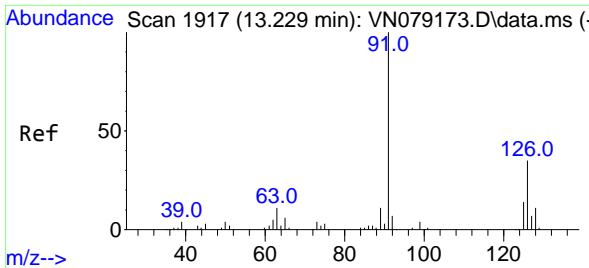


#77  
 t-1,4-Dichloro-2-butene  
 Concen: 17.178 ug/l  
 RT: 12.741 min Scan# 1834  
 Delta R.T. 0.000 min  
 Lab File: VN079297.D  
 Acq: 19 Sep 2023 11:00



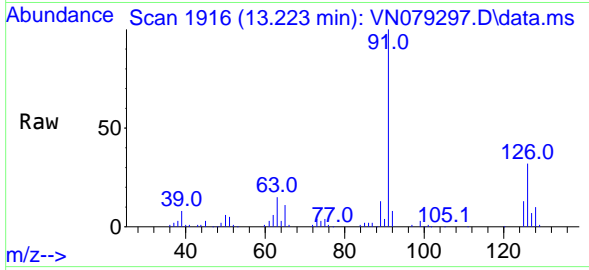
Tgt Ion: 75 Resp: 19360  
 Ion Ratio Lower Upper  
 75 100  
 53 109.2 44.1 132.4  
 89 50.4 22.4 67.3



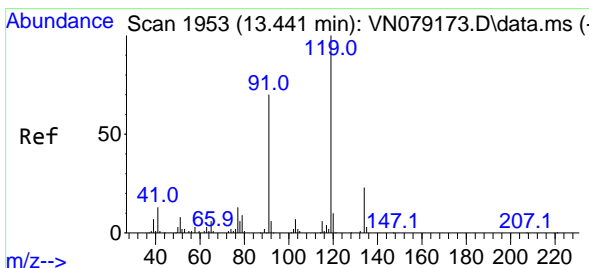
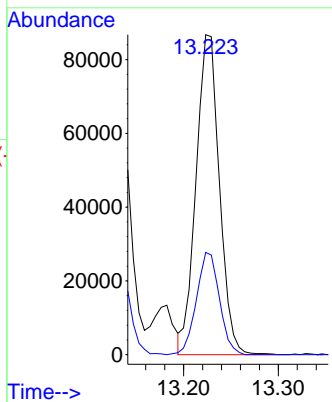
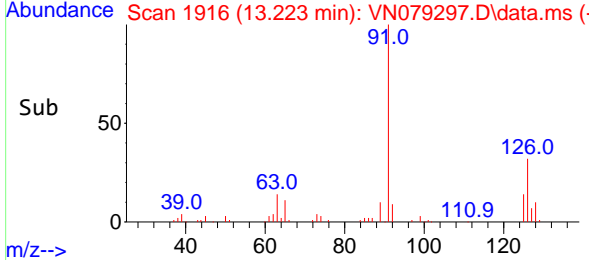


#78  
 4-Chlorotoluene  
 Concen: 21.176 ug/l  
 RT: 13.223 min Scan# 1916  
 Delta R.T. -0.006 min  
 Lab File: VN079297.D  
 Acq: 19 Sep 2023 11:00

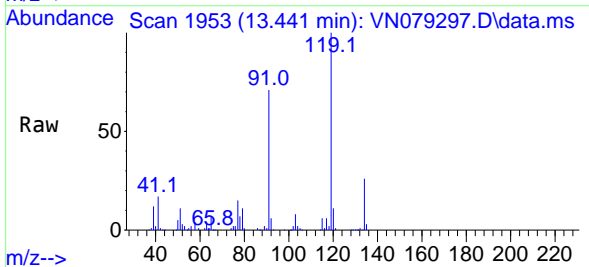
Instrument : MSVOA\_N  
 ClientSampleId :



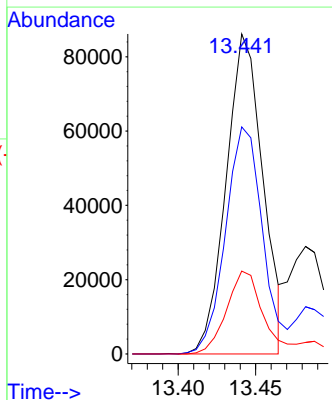
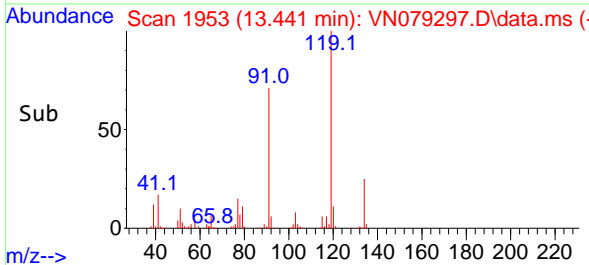
Tgt Ion: 91 Resp: 148561  
 Ion Ratio Lower Upper  
 91 100  
 126 31.4 0.0 66.6

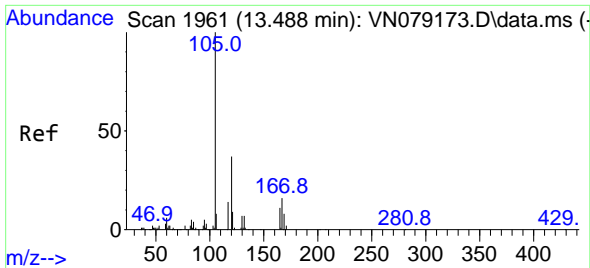


#79  
 tert-butylbenzene  
 Concen: 20.556 ug/l  
 RT: 13.441 min Scan# 1953  
 Delta R.T. -0.000 min  
 Lab File: VN079297.D  
 Acq: 19 Sep 2023 11:00



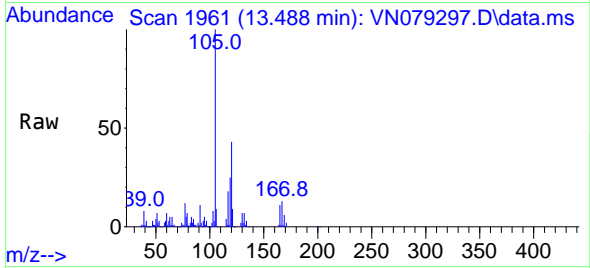
Tgt Ion: 119 Resp: 141880  
 Ion Ratio Lower Upper  
 119 100  
 91 71.9 0.0 130.8  
 134 25.9 0.0 48.8



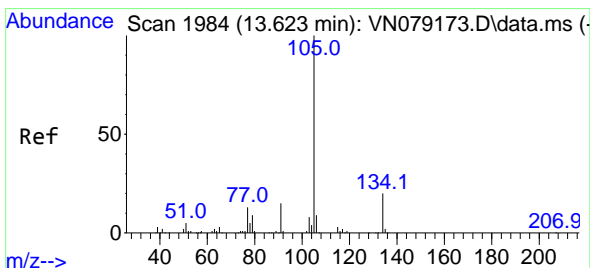
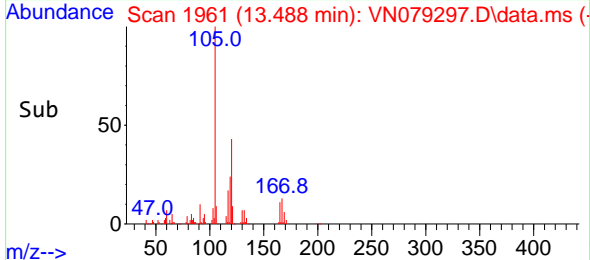
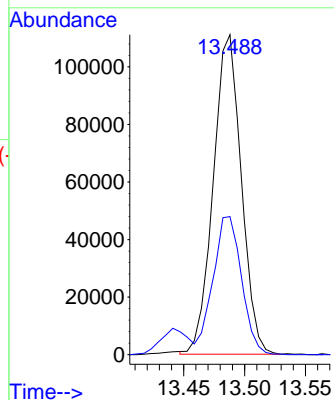


#80  
 1,2,4-Trimethylbenzene  
 Concen: 22.172 ug/l  
 RT: 13.488 min Scan# 1961  
 Delta R.T. 0.000 min  
 Lab File: VN079297.D  
 Acq: 19 Sep 2023 11:00

Instrument : MSVOA\_N  
 ClientSampleId :

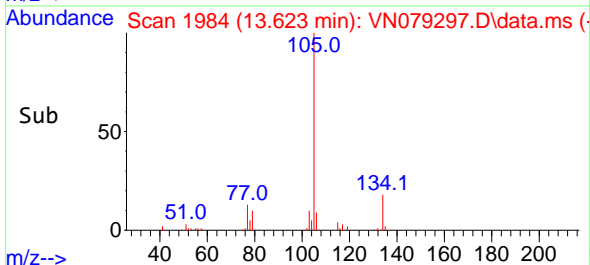
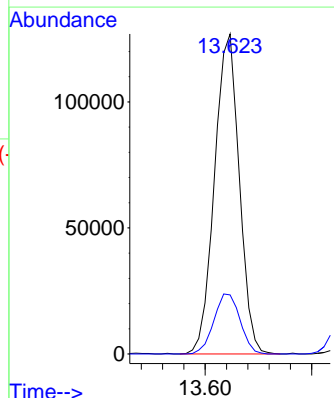
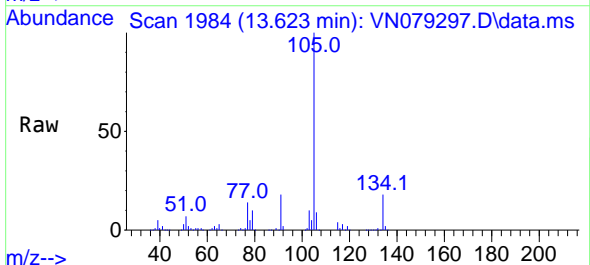


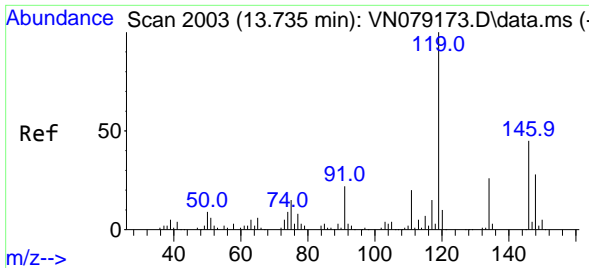
Tgt Ion:105 Resp: 178049  
 Ion Ratio Lower Upper  
 105 100  
 120 44.0 0.0 90.0



#81  
 sec-Butylbenzene  
 Concen: 21.671 ug/l  
 RT: 13.623 min Scan# 1984  
 Delta R.T. 0.000 min  
 Lab File: VN079297.D  
 Acq: 19 Sep 2023 11:00

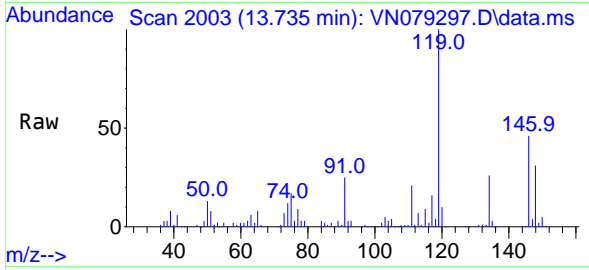
Tgt Ion:105 Resp: 204654  
 Ion Ratio Lower Upper  
 105 100  
 134 19.9 0.0 38.6



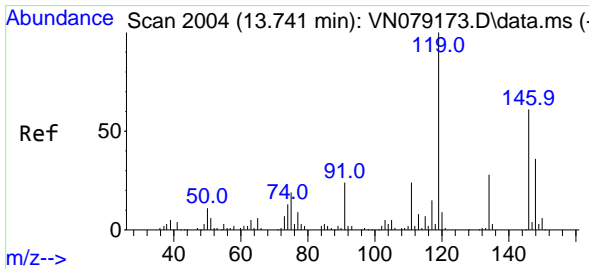
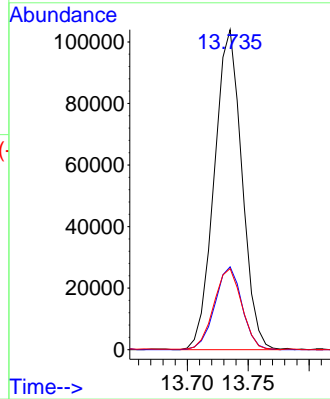
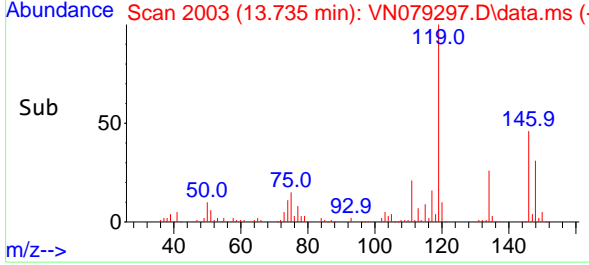


#82  
 p-Isopropyltoluene  
 Concen: 21.978 ug/l  
 RT: 13.735 min Scan# 2003  
 Delta R.T. 0.000 min  
 Lab File: VN079297.D  
 Acq: 19 Sep 2023 11:00

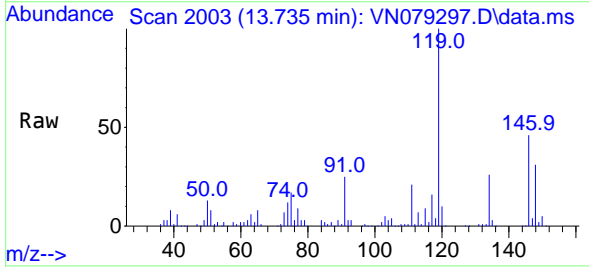
Instrument : MSVOA\_N  
 ClientSampleId :



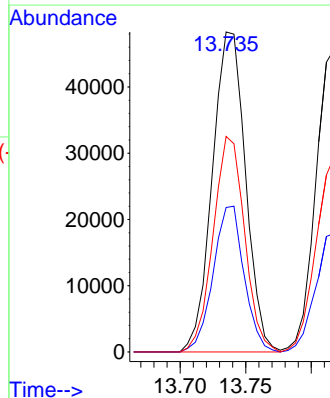
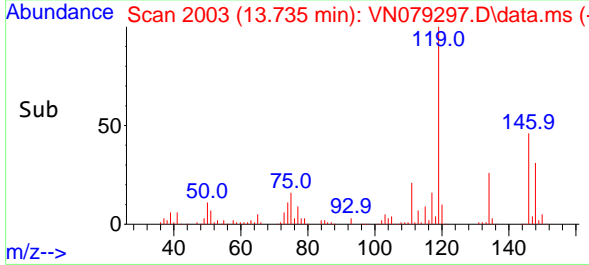
Tgt Ion:119 Resp: 163947  
 Ion Ratio Lower Upper  
 119 100  
 134 25.4 0.0 53.8  
 91 25.6 0.0 48.0

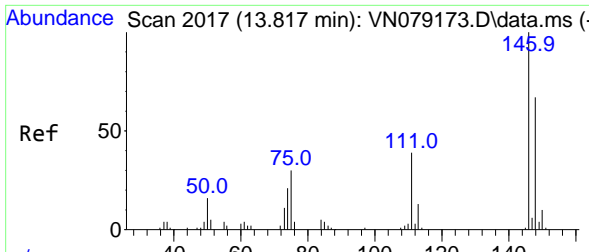


#83  
 1,3-Dichlorobenzene  
 Concen: 21.062 ug/l  
 RT: 13.735 min Scan# 2003  
 Delta R.T. -0.006 min  
 Lab File: VN079297.D  
 Acq: 19 Sep 2023 11:00



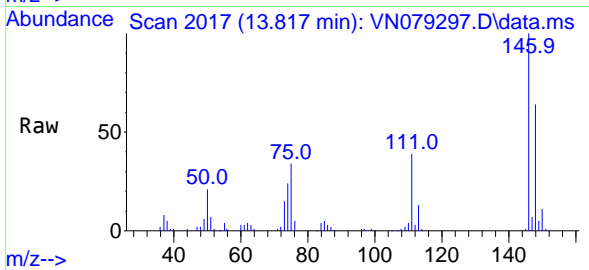
Tgt Ion:146 Resp: 84972  
 Ion Ratio Lower Upper  
 146 100  
 111 42.5 20.5 61.5  
 148 63.8 31.8 95.3



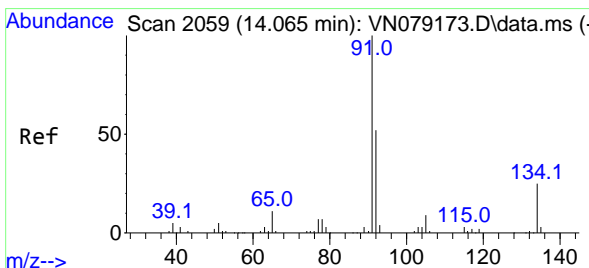
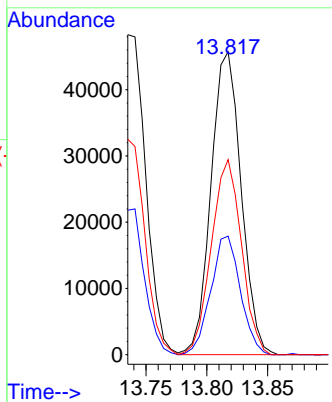
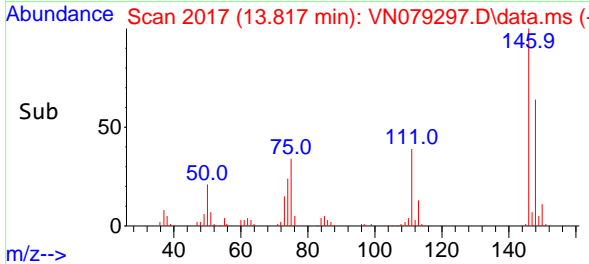


#84  
 1,4-Dichlorobenzene  
 Concen: 20.800 ug/l  
 RT: 13.817 min Scan# 2017  
 Delta R.T. 0.000 min  
 Lab File: VN079297.D  
 Acq: 19 Sep 2023 11:00

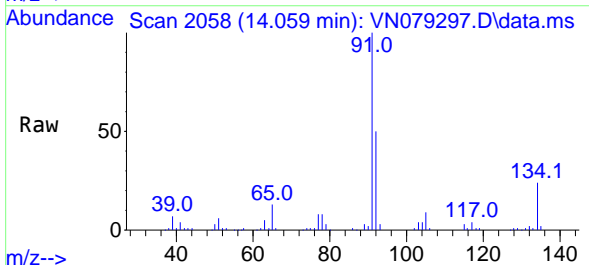
Instrument : MSVOA\_N  
 ClientSampleId :



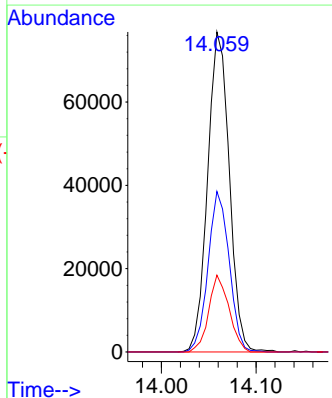
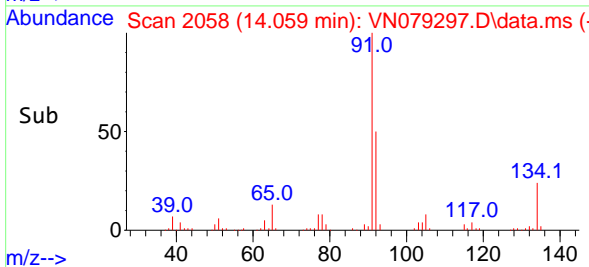
Tgt Ion:146 Resp: 78702  
 Ion Ratio Lower Upper  
 146 100  
 111 38.5 19.5 58.5  
 148 64.4 32.1 96.5

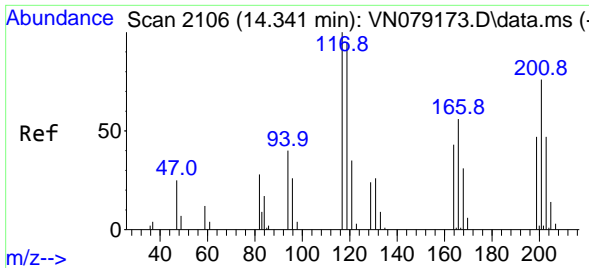


#85  
 n-Butylbenzene  
 Concen: 21.574 ug/l  
 RT: 14.059 min Scan# 2058  
 Delta R.T. -0.006 min  
 Lab File: VN079297.D  
 Acq: 19 Sep 2023 11:00



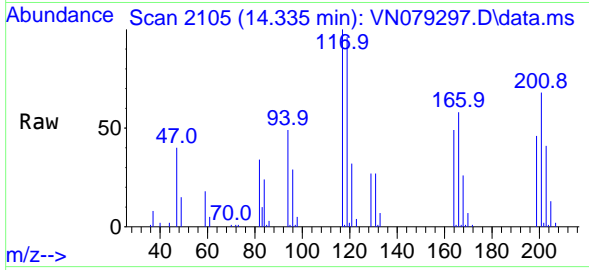
Tgt Ion: 91 Resp: 122572  
 Ion Ratio Lower Upper  
 91 100  
 92 48.9 0.0 105.0  
 134 22.5 0.0 49.6



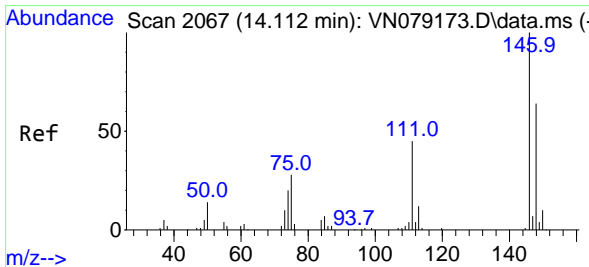
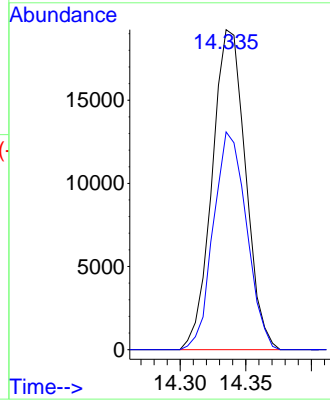
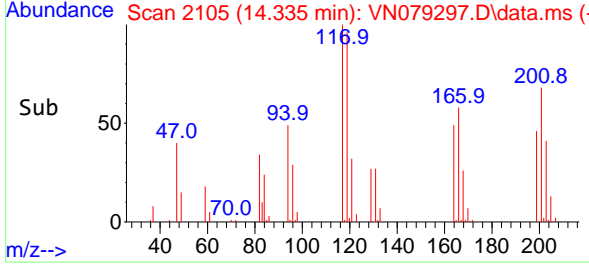


#86  
 Hexachloroethane  
 Concen: 23.106 ug/l  
 RT: 14.335 min Scan# 2105  
 Delta R.T. -0.006 min  
 Lab File: VN079297.D  
 Acq: 19 Sep 2023 11:00

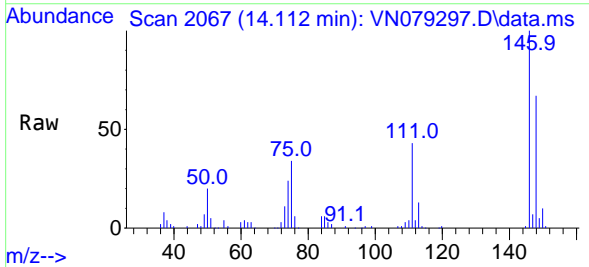
Instrument :  
 MSVOA\_N  
 ClientSampleId :



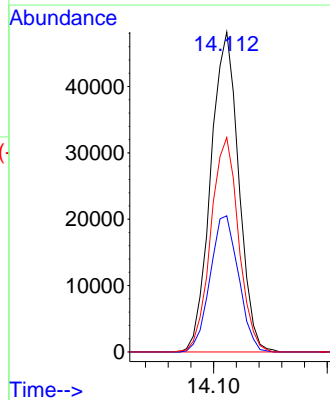
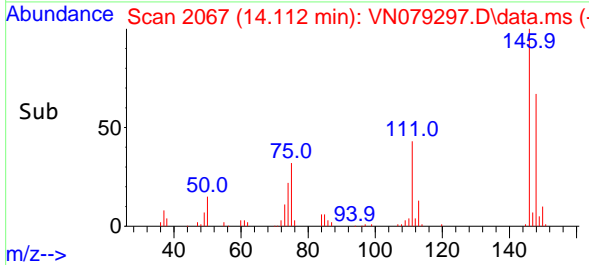
Tgt Ion:117 Resp: 34126  
 Ion Ratio Lower Upper  
 117 100  
 201 67.4 37.2 111.6

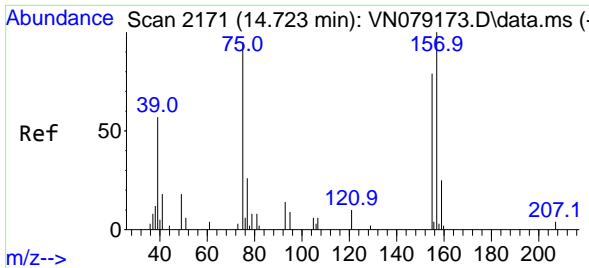


#87  
 1,2-Dichlorobenzene  
 Concen: 20.704 ug/l  
 RT: 14.112 min Scan# 2067  
 Delta R.T. -0.000 min  
 Lab File: VN079297.D  
 Acq: 19 Sep 2023 11:00



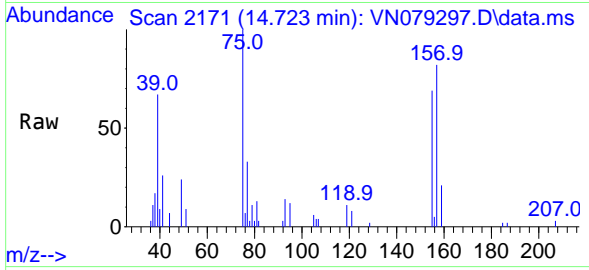
Tgt Ion:146 Resp: 82432  
 Ion Ratio Lower Upper  
 146 100  
 111 43.3 21.5 64.5  
 148 66.6 31.8 95.3



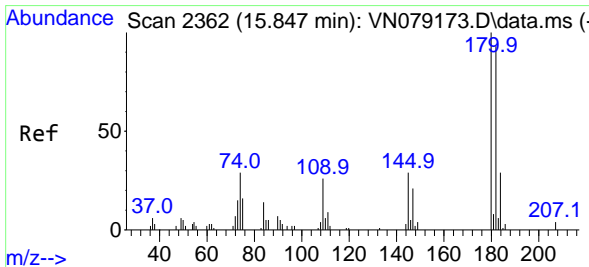
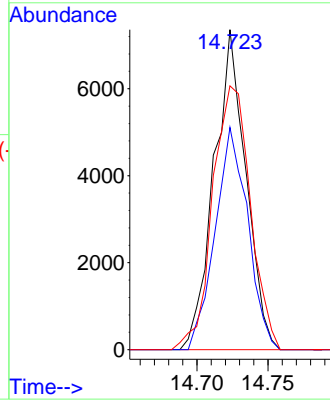
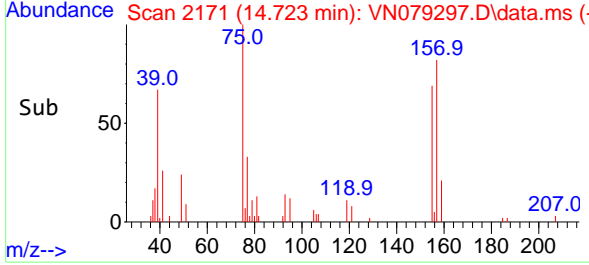


#88  
 1,2-Dibromo-3-Chloropropane  
 Concen: 17.870 ug/l  
 RT: 14.723 min Scan# 2171  
 Delta R.T. 0.000 min  
 Lab File: VN079297.D  
 Acq: 19 Sep 2023 11:00

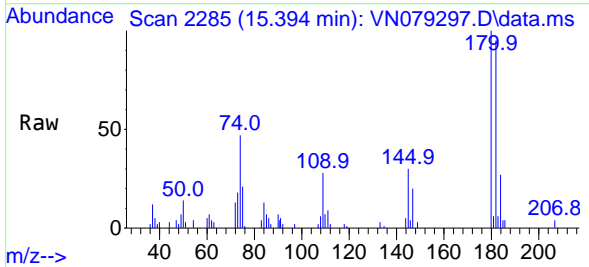
Instrument :  
 MSVOA\_N  
 ClientSampleId :



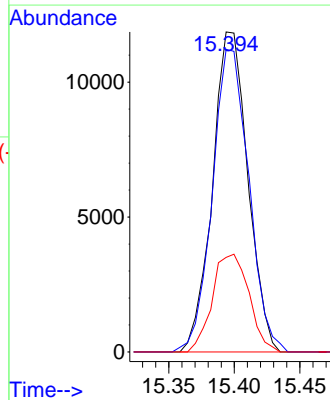
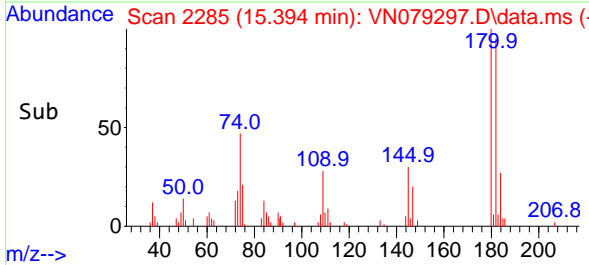
Tgt Ion: 75 Resp: 11491  
 Ion Ratio Lower Upper  
 75 100  
 155 71.0 68.1 102.1  
 157 97.5 83.9 125.9

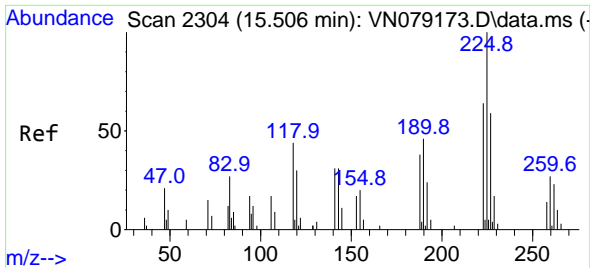


#89  
 1,2,4-Trichlorobenzene  
 Concen: 13.048 ug/l  
 RT: 15.394 min Scan# 2285  
 Delta R.T. -0.453 min  
 Lab File: VN079297.D  
 Acq: 19 Sep 2023 11:00



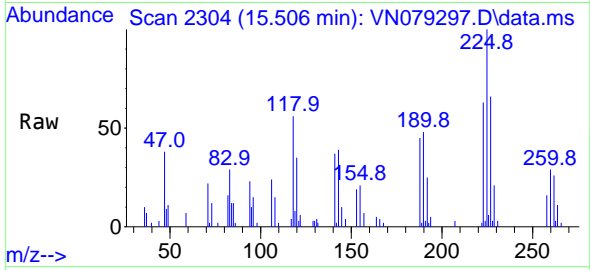
Tgt Ion: 180 Resp: 22230  
 Ion Ratio Lower Upper  
 180 100  
 182 97.1 74.5 111.7  
 145 31.7 26.2 39.2



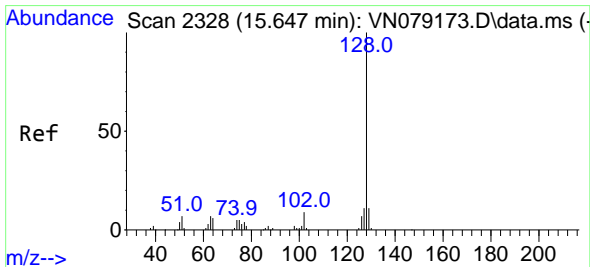
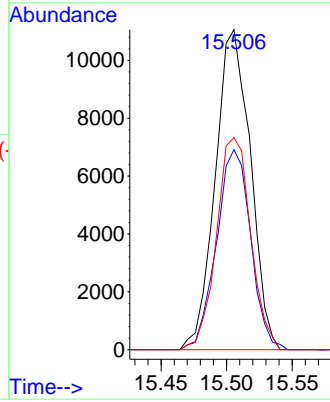
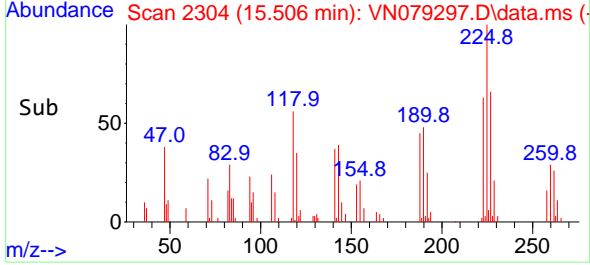


#90  
 Hexachlorobutadiene  
 Concen: 19.904 ug/l  
 RT: 15.506 min Scan# 211  
 Delta R.T. -0.000 min  
 Lab File: VN079297.D  
 Acq: 19 Sep 2023 11:00

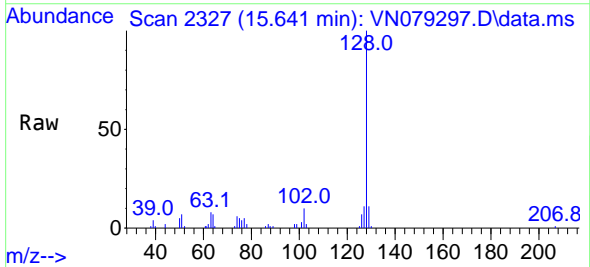
Instrument :  
 MSVOA\_N  
 ClientSampleId :



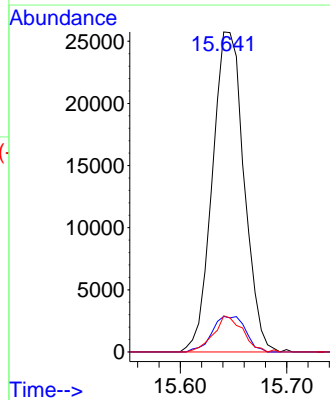
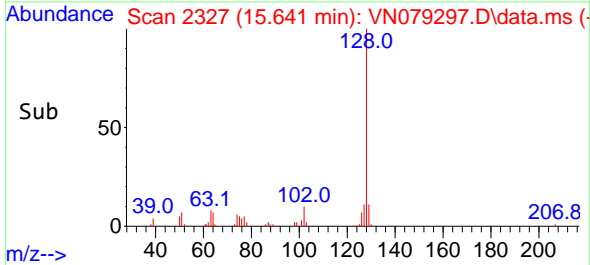
Tgt Ion:225 Resp: 20598  
 Ion Ratio Lower Upper  
 225 100  
 223 60.9 0.0 125.6  
 227 64.4 0.0 124.0



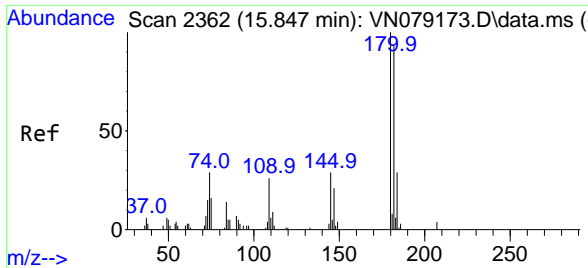
#91  
 Naphthalene  
 Concen: 11.938 ug/l  
 RT: 15.641 min Scan# 2327  
 Delta R.T. -0.006 min  
 Lab File: VN079297.D  
 Acq: 19 Sep 2023 11:00



Tgt Ion:128 Resp: 53151  
 Ion Ratio Lower Upper  
 128 100  
 127 11.8 10.1 15.1  
 129 10.4 8.5 12.7

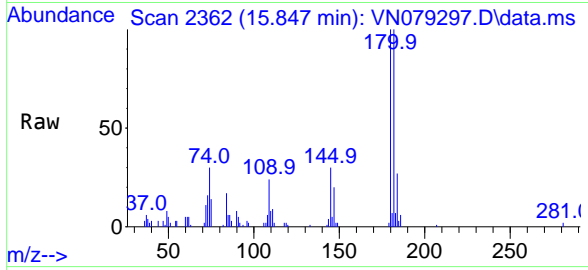






#92  
 1,2,3-Trichlorobenzene  
 Concen: 15.330 ug/l  
 RT: 15.847 min Scan# 21  
 Delta R.T. -0.000 min  
 Lab File: VN079297.D  
 Acq: 19 Sep 2023 11:00

Instrument :  
 MSVOA\_N  
 ClientSampleId :



Tgt Ion:180 Resp: 26118

Ion	Ratio	Lower	Upper
180	100		
182	92.2	0.0	186.2
145	15.9	0.0	65.4

