

Data Path : Z:\voasrv\HPCHEM1\MSVOA\_N\Data\VN091923\  
 Data File : VN079303.D  
 Acq On : 19 Sep 2023 15:50  
 Operator : JC\MD  
 Sample : 04478-01 5X  
 Misc : 5.0mL/MSVOA\_N/WATER  
 ALS Vial : 8 Sample Multiplier: 1

Instrument :  
 MSVOA\_N  
 ClientSampleId :

Quant Time: Sep 20 03:52:16 2023  
 Quant Method : Z:\voasrv\HPCHEM1\MSVOA\_N\methods\624N090723W.M  
 Quant Title : METHOD 624 VOLATILE ORGANIC ANALYSIS  
 QLast Update : Fri Sep 08 05:09:17 2023  
 Response via : Initial Calibration

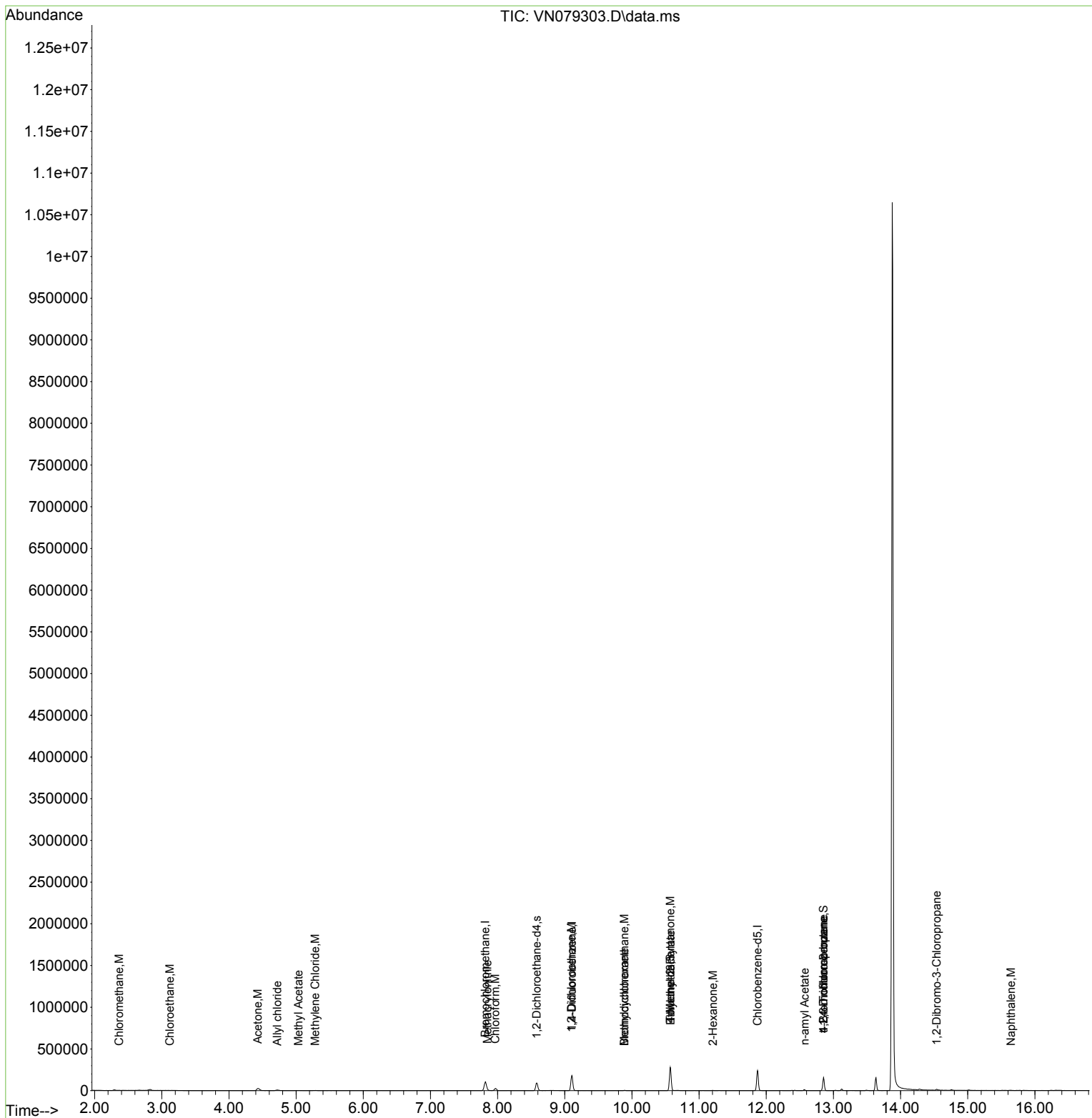
Compound	R.T.	QIon	Response	Conc	Units	Dev(Min)
-----						
Internal Standards						
1) Bromochloromethane	7.818	128	33338	30.000	ug/l	0.00
28) 1,4-Difluorobenzene	9.106	114	149536	30.000	ug/l	0.00
57) Chlorobenzene-d5	11.871	117	135840	30.000	ug/l	0.00
System Monitoring Compounds						
27) 1,2-Dichloroethane-d4	8.583	65	74974	29.933	ug/l	0.00
Spiked Amount	30.000	Range 91 - 110	Recovery	=	99.767%	
60) 4-Bromofluorobenzene	12.853	95	50034	24.998	ug/l	0.00
Spiked Amount	30.000	Range 63 - 112	Recovery	=	83.333%	
63) Toluene-d8	10.571	98	188859	29.750	ug/l	0.00
Spiked Amount	30.000	Range 91 - 112	Recovery	=	99.167%	
Target Compounds						
						Qvalue
3) Chloromethane	2.365	50	532	0.285	ug/l #	45
6) Chloroethane	3.118	64	519	0.459	ug/l #	50
12) Methyl Acetate	5.036	43	607	0.222	ug/l #	14
15) Acetone	4.430	58	16039	76.691	ug/l	86
17) Allyl chloride	4.718	41	1177	0.625	ug/l	76
18) Methylene Chloride	5.283	84	1346	0.856	ug/l #	59
25) Chloroform	7.965	83	25050	6.304	ug/l #	84
35) Methacrylonitrile	7.847	41	1072	0.826	ug/l #	46
36) 1,2-Dichloroethane	9.100	62	6012	2.393	ug/l #	73
38) Methylcyclohexane	9.888	83	2341	0.977	ug/l #	17
41) Bromodichloromethane	9.888	83	2341	0.906	ug/l	95
47) n-amyl Acetate	12.571	43	1746	0.603	ug/l #	1
51) Ethyl methacrylate	10.577	69	665	0.237	ug/l #	81
58) 4-Methyl-2-Pentanone	10.571	43	984	0.395	ug/l #	1
59) 2-Hexanone	11.206	43	2067	1.181	ug/l	93
72) 1,2,3-Trichloropropane	12.853	75	27504	11.896	ug/l	1
77) t-1,4-Dichloro-2-butene	12.853	75	27504	33.788	ug/l #	14
88) 1,2-Dibromo-3-Chloropr...	14.535	75	407	0.876	ug/l #	2
91) Naphthalene	15.647	128	663	0.206	ug/l #	70

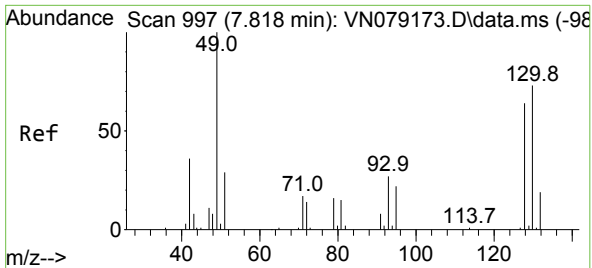
(#) = qualifier out of range (m) = manual integration (+) = signals summed

Data Path : Z:\voasrv\HPCHEM1\MSVOA\_N\Data\VN091923\  
 Data File : VN079303.D  
 Acq On : 19 Sep 2023 15:50  
 Operator : JC\MD  
 Sample : 04478-01 5X  
 Misc : 5.0mL/MSVOA\_N/WATER  
 ALS Vial : 8 Sample Multiplier: 1

Instrument :  
 MSVOA\_N  
 ClientSampleId :

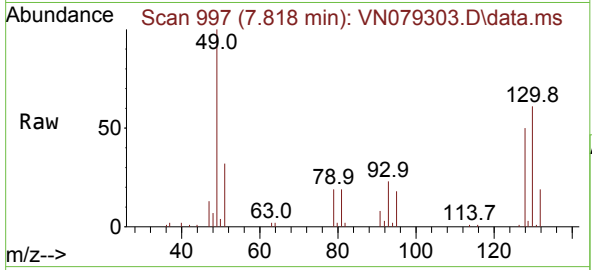
Quant Time: Sep 20 03:52:16 2023  
 Quant Method : Z:\voasrv\HPCHEM1\MSVOA\_N\methods\624N090723W.M  
 Quant Title : METHOD 624 VOLATILE ORGANIC ANALYSIS  
 QLast Update : Fri Sep 08 05:09:17 2023  
 Response via : Initial Calibration





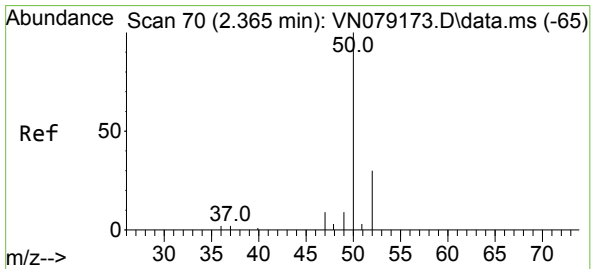
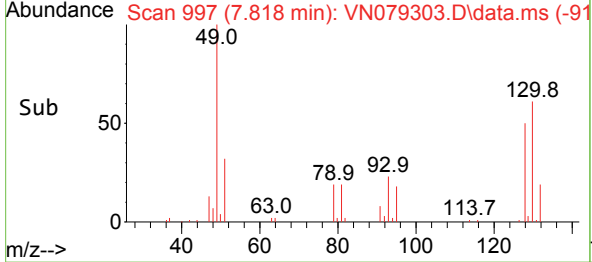
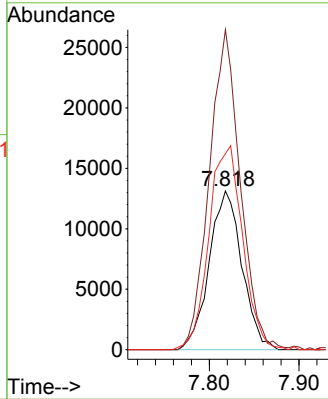
#1  
 Bromochloromethane  
 Concen: 30.000 ug/l  
 RT: 7.818 min Scan# 91  
 Delta R.T. -0.000 min  
 Lab File: VN079303.D  
 Acq: 19 Sep 2023 15:50

Instrument :  
 MSVOA\_N  
 ClientSampleId :



Tgt Ion:128 Resp: 33338

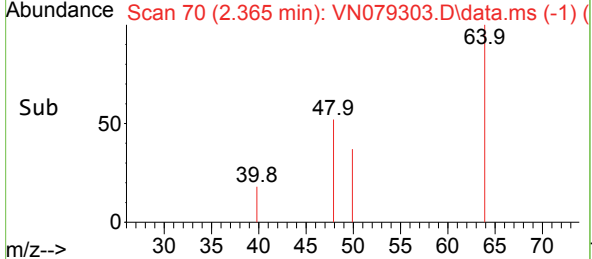
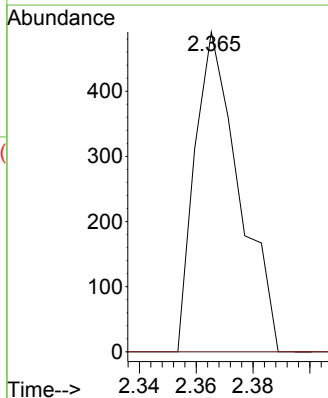
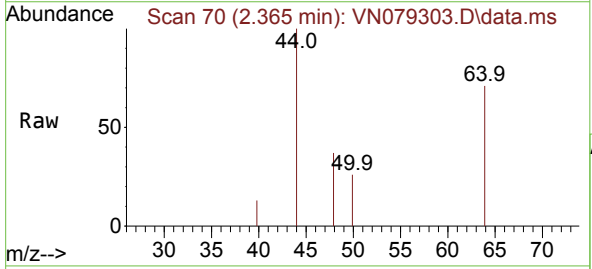
Ion	Ratio	Lower	Upper
128	100		
49	188.5	0.0	414.3
130	132.4	0.0	311.0

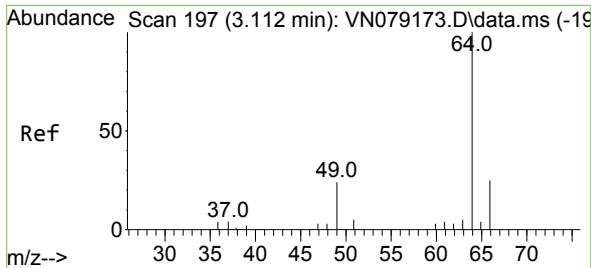


#3  
 Chloromethane  
 Concen: 0.285 ug/l  
 RT: 2.365 min Scan# 70  
 Delta R.T. 0.000 min  
 Lab File: VN079303.D  
 Acq: 19 Sep 2023 15:50

Tgt Ion: 50 Resp: 532

Ion	Ratio	Lower	Upper
50	100		
52	0.0	24.0	36.0

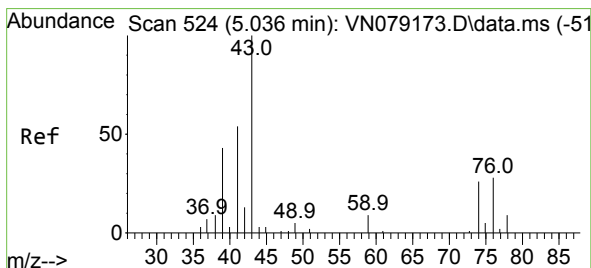
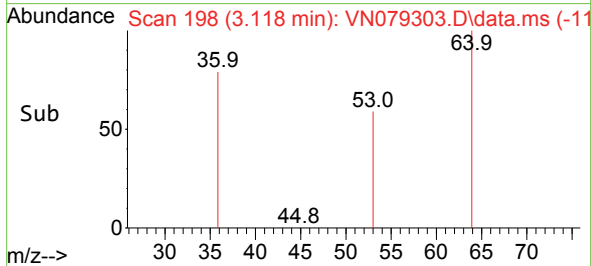
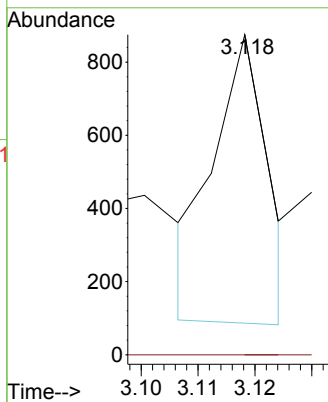
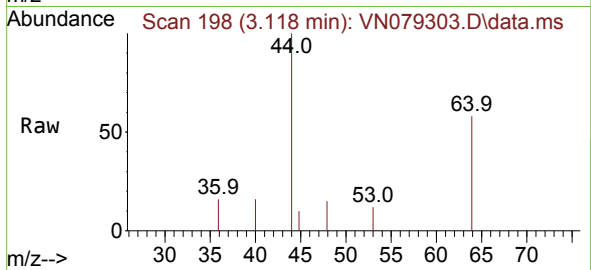




#6  
 Chloroethane  
 Concen: 0.459 ug/l  
 RT: 3.118 min Scan# 197  
 Delta R.T. 0.006 min  
 Lab File: VN079303.D  
 Acq: 19 Sep 2023 15:50

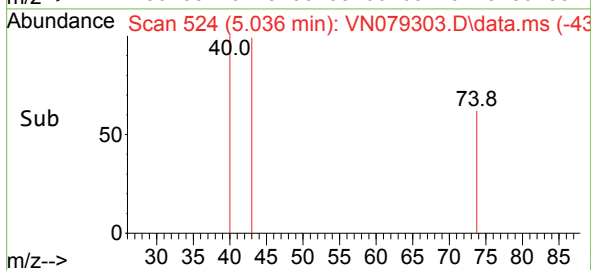
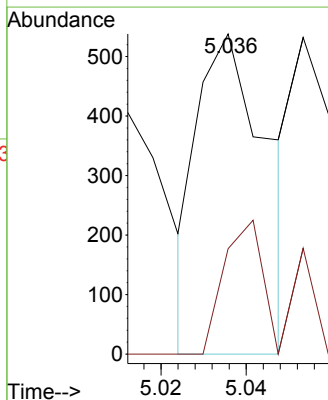
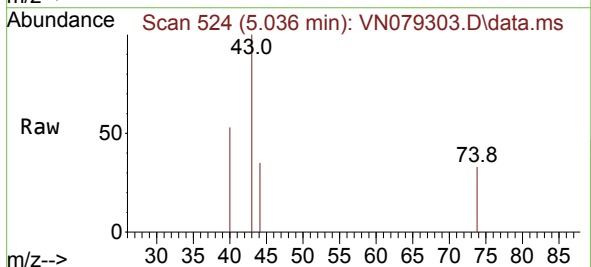
Instrument :  
 MSVOA\_N  
 ClientSampleId :

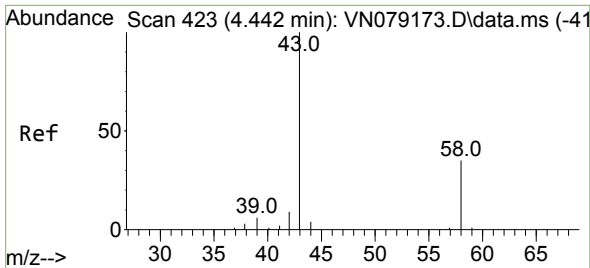
Tgt Ion: 64 Resp: 519  
 Ion Ratio Lower Upper  
 64 100  
 66 0.0 20.1 30.1#



#12  
 Methyl Acetate  
 Concen: 0.222 ug/l  
 RT: 5.036 min Scan# 524  
 Delta R.T. -0.000 min  
 Lab File: VN079303.D  
 Acq: 19 Sep 2023 15:50

Tgt Ion: 43 Resp: 607  
 Ion Ratio Lower Upper  
 43 100  
 74 68.9 20.4 30.6#

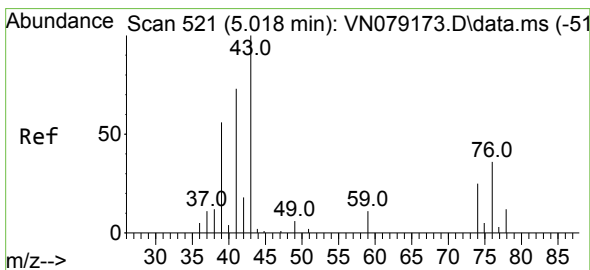
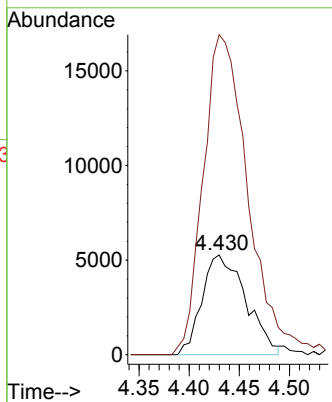
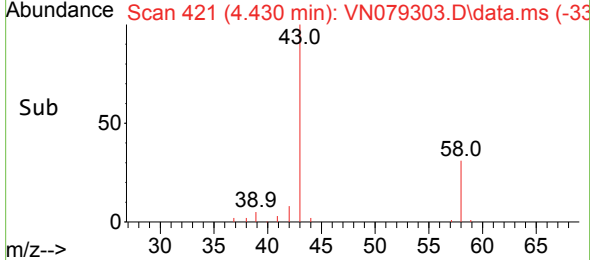
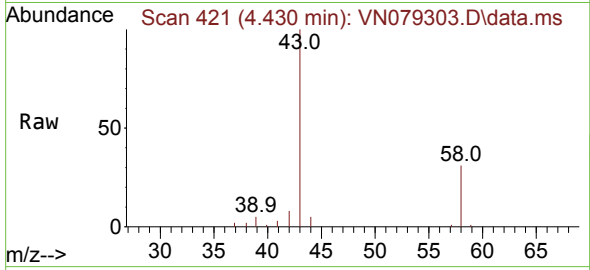




#15  
 Acetone  
 Concen: 76.691 ug/l  
 RT: 4.430 min Scan# 41  
 Delta R.T. -0.012 min  
 Lab File: VN079303.D  
 Acq: 19 Sep 2023 15:50

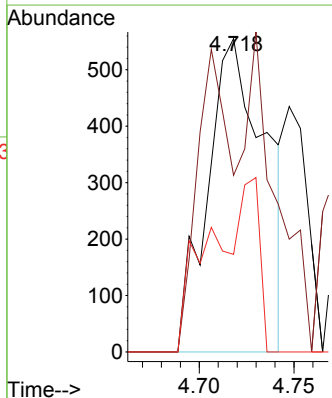
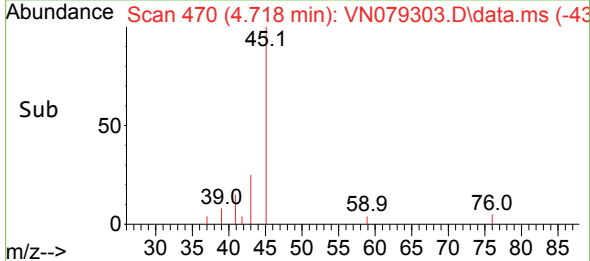
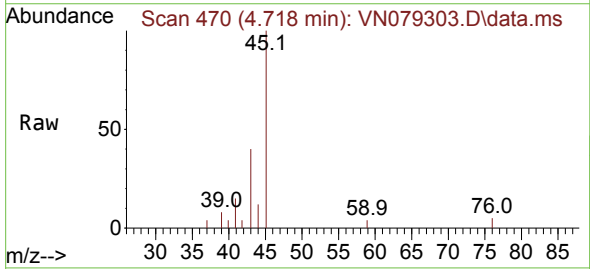
Instrument :  
 MSVOA\_N  
 ClientSampleId :

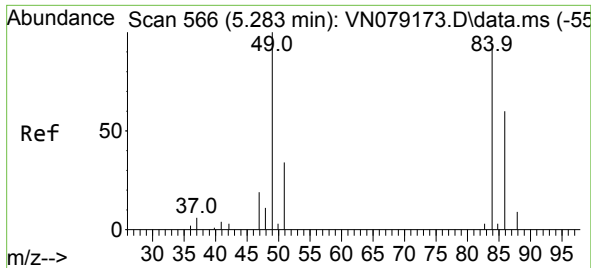
Tgt Ion: 58 Resp: 16039  
 Ion Ratio Lower Upper  
 58 100  
 43 312.8 228.3 342.5



#17  
 Allyl chloride  
 Concen: 0.625 ug/l  
 RT: 4.718 min Scan# 470  
 Delta R.T. -0.300 min  
 Lab File: VN079303.D  
 Acq: 19 Sep 2023 15:50

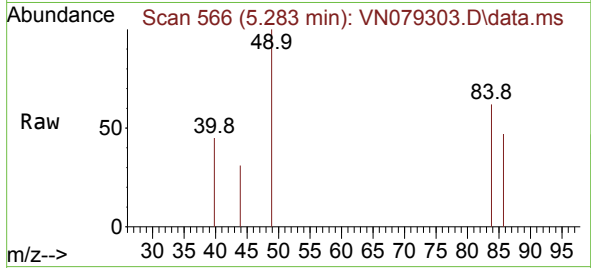
Tgt Ion: 41 Resp: 1177  
 Ion Ratio Lower Upper  
 41 100  
 39 56.4 38.3 114.8  
 76 31.2 23.7 71.1





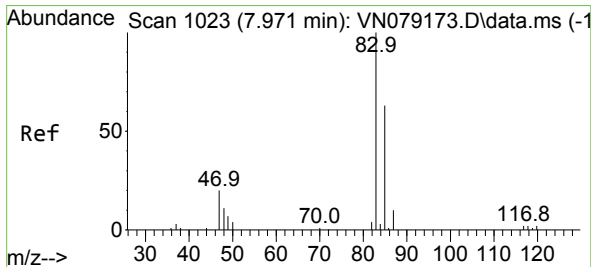
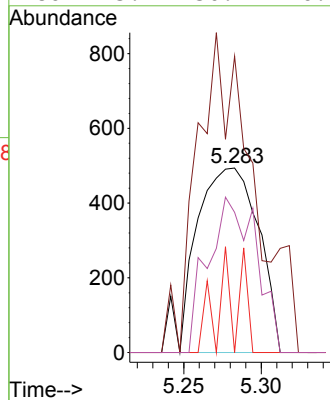
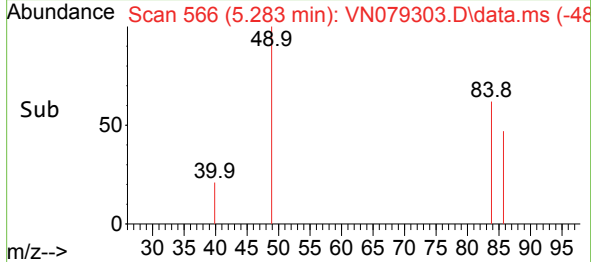
#18  
 Methylene Chloride  
 Concen: 0.856 ug/l  
 RT: 5.283 min Scan# 50  
 Delta R.T. -0.000 min  
 Lab File: VN079303.D  
 Acq: 19 Sep 2023 15:50

Instrument : MSVOA\_N  
 ClientSampleId :

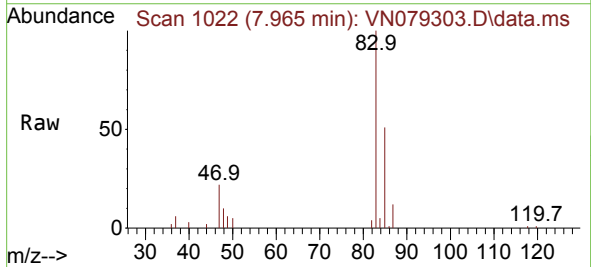


Tgt Ion: 84 Resp: 1346

Ion	Ratio	Lower	Upper
84	100		
49	160.5	86.9	130.3#
51	0.0	28.6	43.0#
86	75.9	50.7	76.1

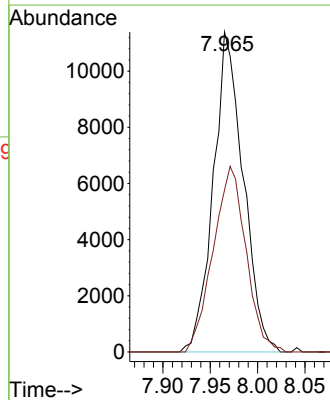
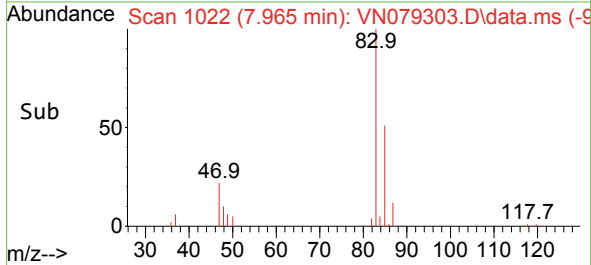


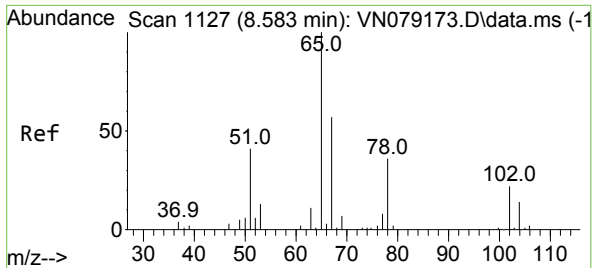
#25  
 Chloroform  
 Concen: 6.304 ug/l  
 RT: 7.965 min Scan# 1022  
 Delta R.T. -0.006 min  
 Lab File: VN079303.D  
 Acq: 19 Sep 2023 15:50



Tgt Ion: 83 Resp: 25050

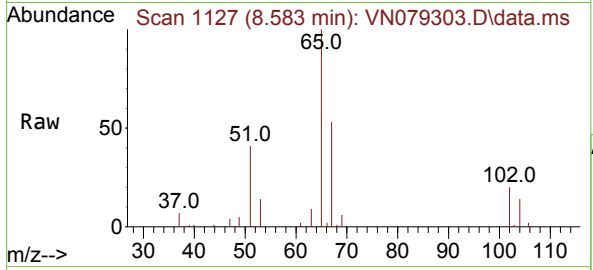
Ion	Ratio	Lower	Upper
83	100		
85	50.6	50.6	76.0#



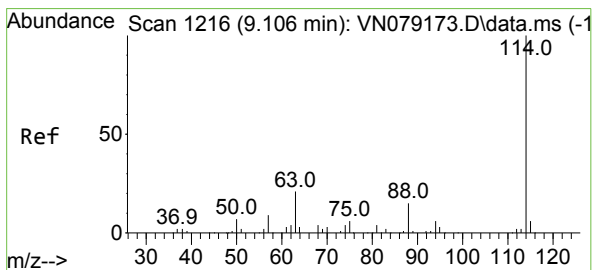
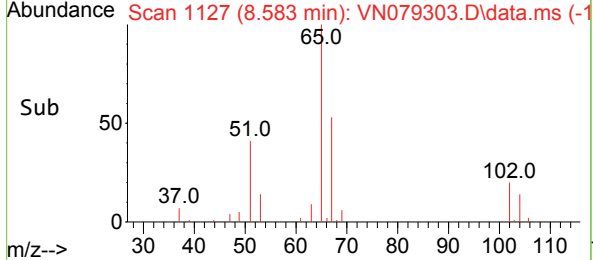
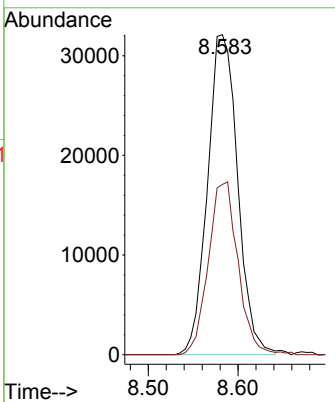


#27  
 1,2-Dichloroethane-d4  
 Concen: 29.933 ug/l  
 RT: 8.583 min Scan# 1127  
 Delta R.T. -0.000 min  
 Lab File: VN079303.D  
 Acq: 19 Sep 2023 15:50

Instrument : MSVOA\_N  
 ClientSampleId :

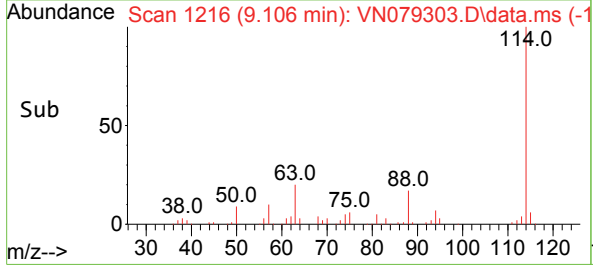
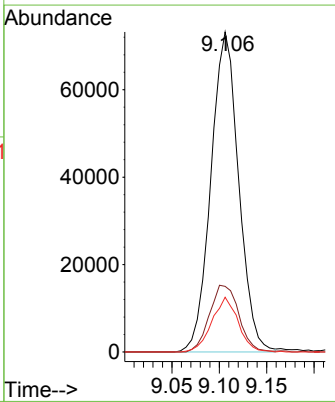
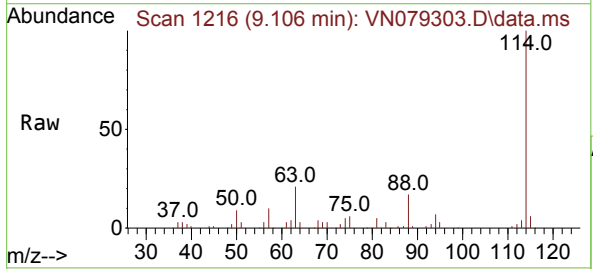


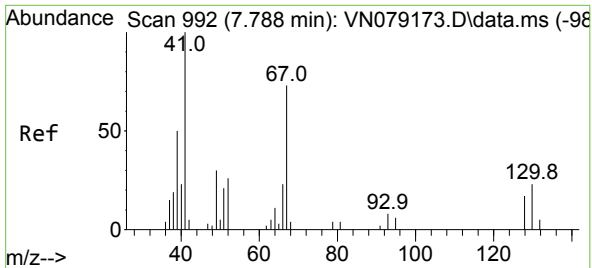
Tgt Ion: 65 Resp: 74974  
 Ion Ratio Lower Upper  
 65 100  
 67 53.1 44.4 66.6



#28  
 1,4-Difluorobenzene  
 Concen: 30.000 ug/l  
 RT: 9.106 min Scan# 1216  
 Delta R.T. 0.000 min  
 Lab File: VN079303.D  
 Acq: 19 Sep 2023 15:50

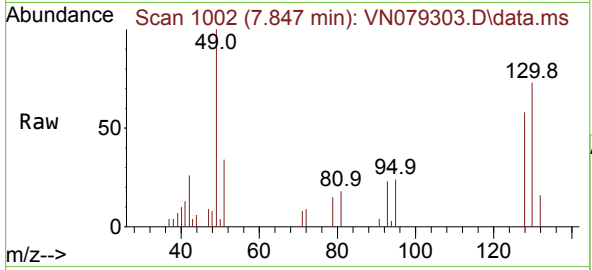
Tgt Ion: 114 Resp: 149536  
 Ion Ratio Lower Upper  
 114 100  
 63 22.0 17.0 25.4  
 88 16.2 12.8 19.2





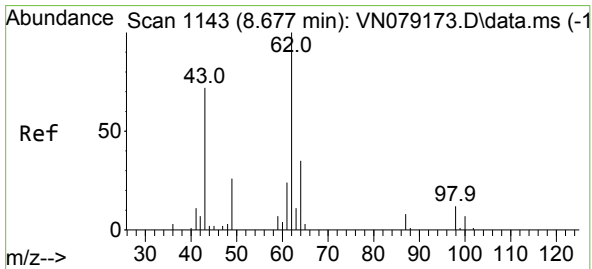
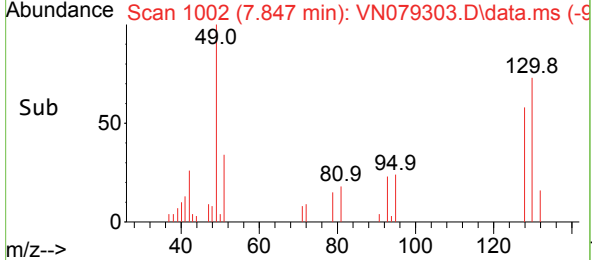
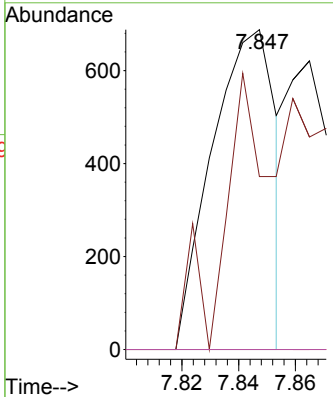
#35  
 Methacrylonitrile  
 Concen: 0.826 ug/l  
 RT: 7.847 min Scan# 1002  
 Delta R.T. 0.059 min  
 Lab File: VN079303.D  
 Acq: 19 Sep 2023 15:50

Instrument : MSVOA\_N  
 ClientSampleId :



Tgt Ion: 41 Resp: 1072

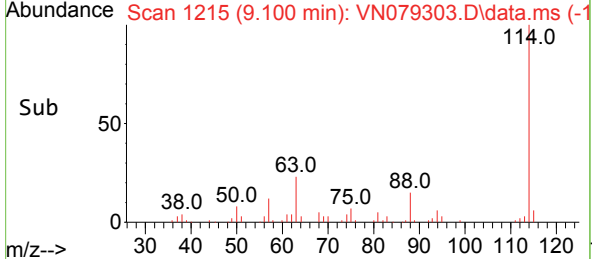
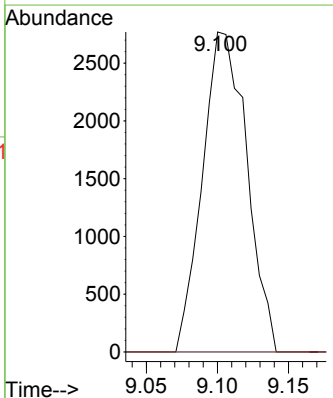
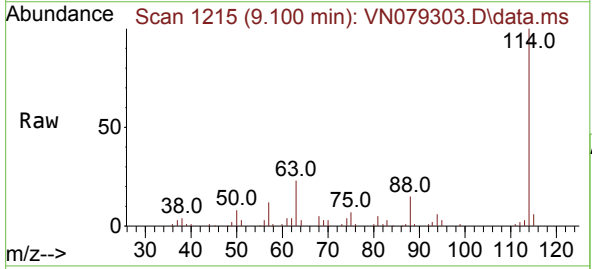
Ion	Ratio	Lower	Upper
41	100		
39	54.1	24.9	74.6
67	0.0	36.7	110.1#
52	0.0	13.2	39.5#



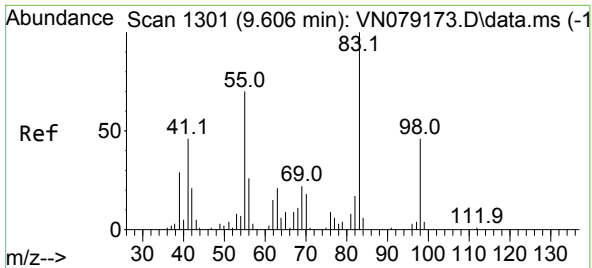
#36  
 1,2-Dichloroethane  
 Concen: 2.393 ug/l  
 RT: 9.100 min Scan# 1215  
 Delta R.T. 0.423 min  
 Lab File: VN079303.D  
 Acq: 19 Sep 2023 15:50

Tgt Ion: 62 Resp: 6012

Ion	Ratio	Lower	Upper
62	100		
98	0.0	8.2	12.2#



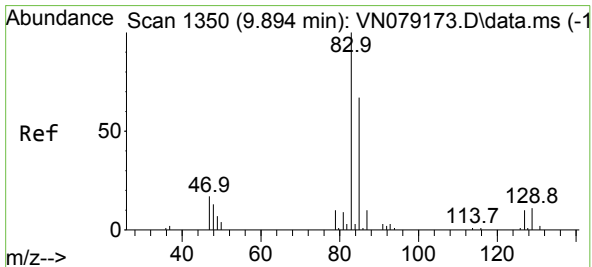
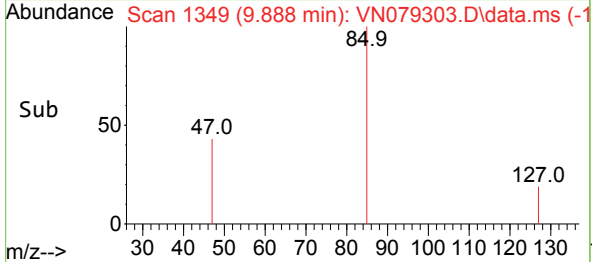
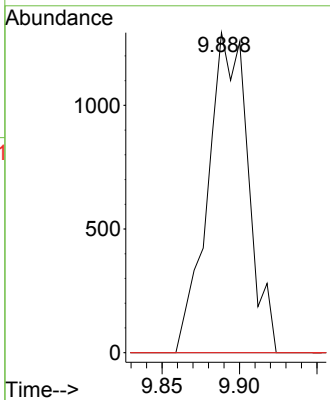
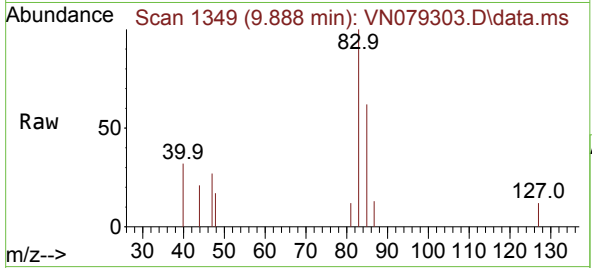




#38  
 Methylcyclohexane  
 Concen: 0.977 ug/l  
 RT: 9.888 min Scan# 1349  
 Delta R.T. 0.282 min  
 Lab File: VN079303.D  
 Acq: 19 Sep 2023 15:50

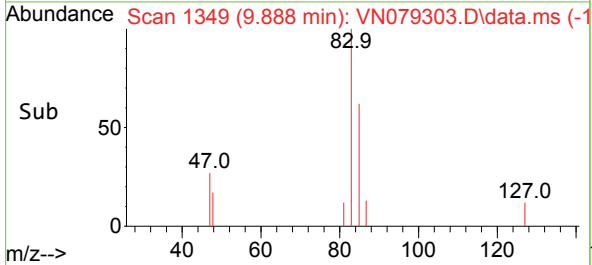
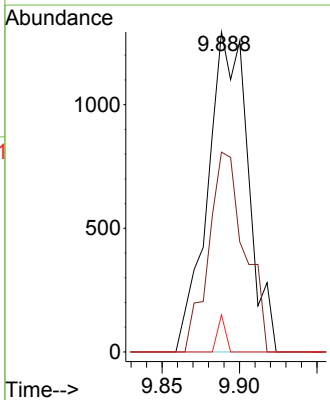
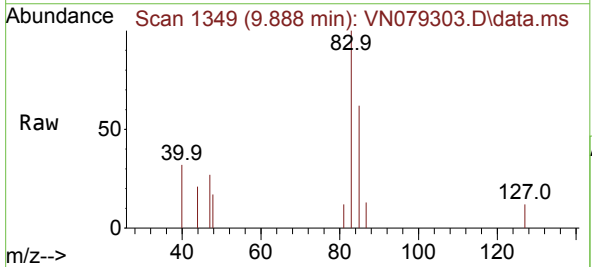
Instrument : MSVOA\_N  
 ClientSampleId :

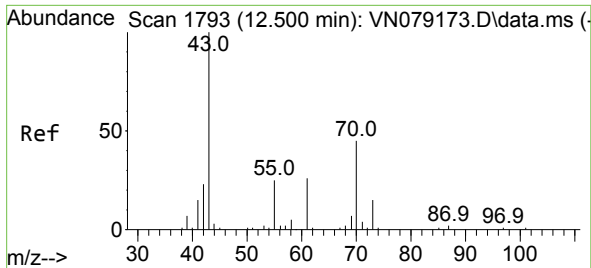
Tgt Ion	Resp	Lower	Upper
83	2341		
55	0.0	39.1	117.2#
98	0.0	24.1	72.4#



#41  
 Bromodichloromethane  
 Concen: 0.906 ug/l  
 RT: 9.888 min Scan# 1349  
 Delta R.T. -0.006 min  
 Lab File: VN079303.D  
 Acq: 19 Sep 2023 15:50

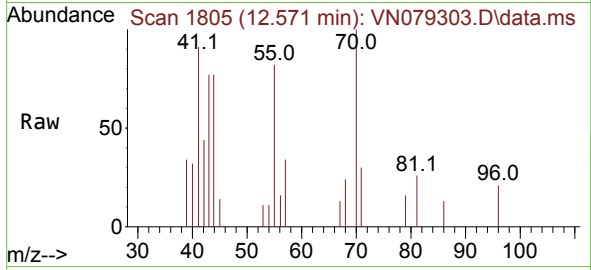
Tgt Ion	Resp	Lower	Upper
83	2341		
85	62.4	53.4	80.2
127	11.6	8.3	12.5



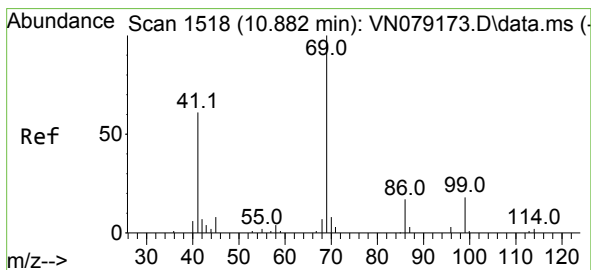
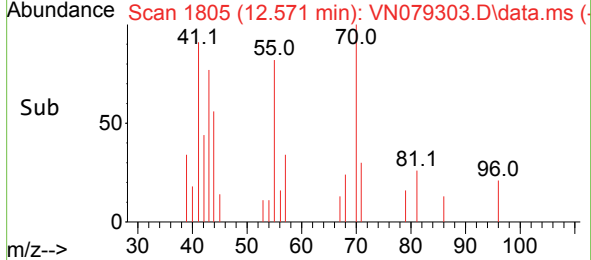
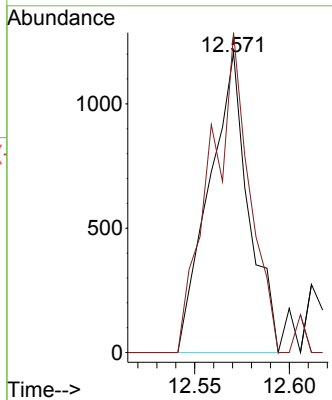


#47  
 n-amyl Acetate  
 Concen: 0.603 ug/l  
 RT: 12.571 min Scan# 1466  
 Delta R.T. 0.071 min  
 Lab File: VN079303.D  
 Acq: 19 Sep 2023 15:50

Instrument : MSVOA\_N  
 ClientSampleId :

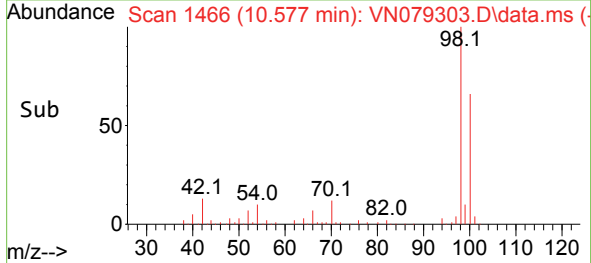
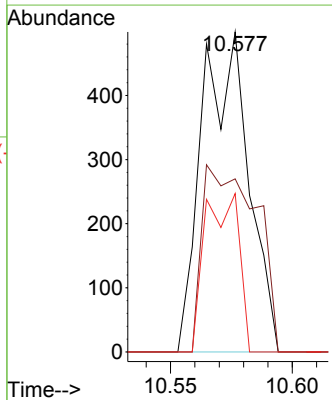
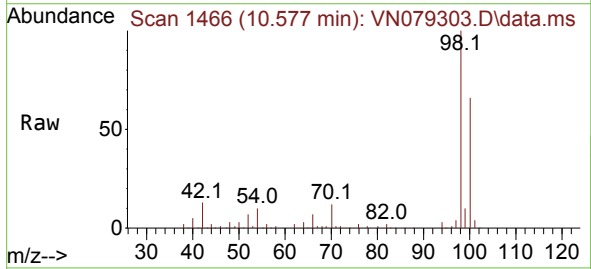


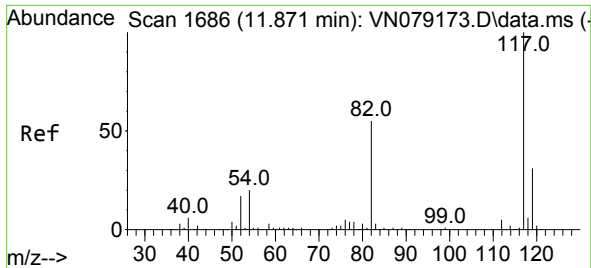
Tgt Ion: 43 Resp: 1746  
 Ion Ratio Lower Upper  
 43 100  
 55 106.1 20.5 30.7#



#51  
 Ethyl methacrylate  
 Concen: 0.237 ug/l  
 RT: 10.577 min Scan# 1466  
 Delta R.T. -0.305 min  
 Lab File: VN079303.D  
 Acq: 19 Sep 2023 15:50

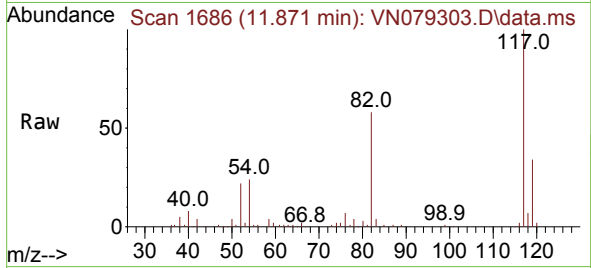
Tgt Ion: 69 Resp: 665  
 Ion Ratio Lower Upper  
 69 100  
 41 54.1 30.3 90.9  
 39 49.5 13.4 40.1#



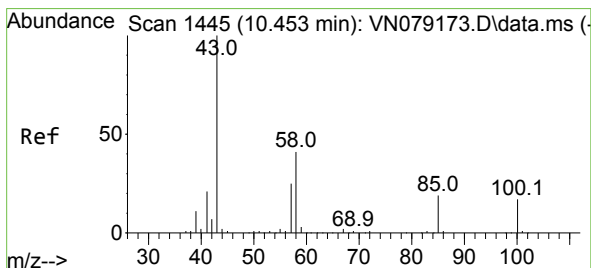
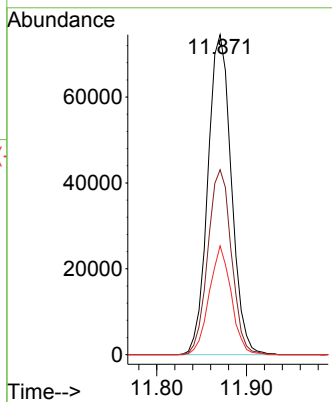
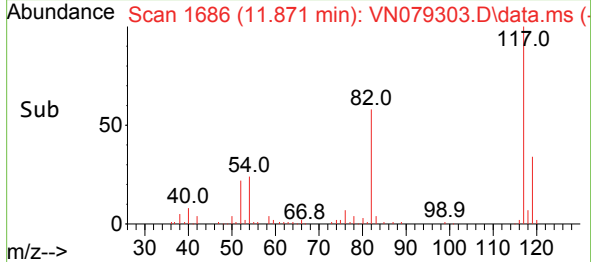


#57  
 Chlorobenzene-d5  
 Concen: 30.000 ug/l  
 RT: 11.871 min Scan# 117  
 Delta R.T. -0.000 min  
 Lab File: VN079303.D  
 Acq: 19 Sep 2023 15:50

Instrument :  
 MSVOA\_N  
 ClientSampleId :

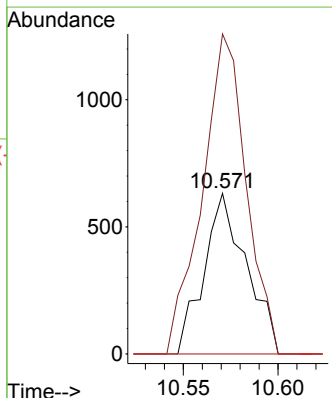
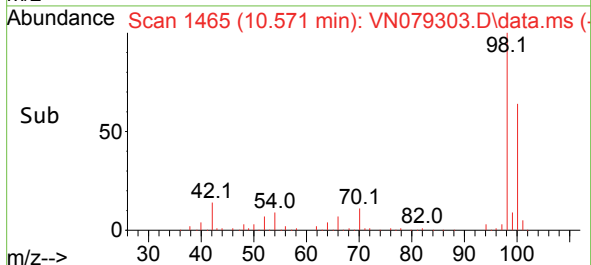
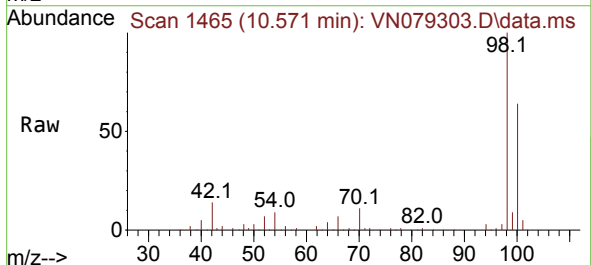


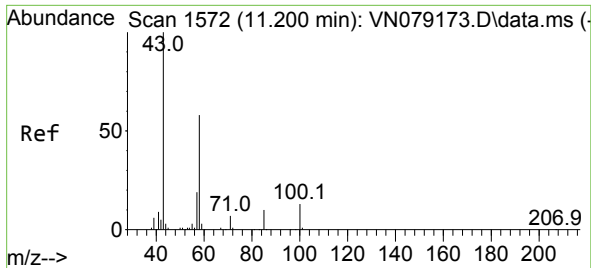
Tgt Ion:117 Resp: 135840  
 Ion Ratio Lower Upper  
 117 100  
 82 57.9 44.7 67.1  
 119 31.9 24.9 37.3



#58  
 4-Methyl-2-Pentanone  
 Concen: 0.395 ug/l  
 RT: 10.571 min Scan# 1465  
 Delta R.T. 0.118 min  
 Lab File: VN079303.D  
 Acq: 19 Sep 2023 15:50

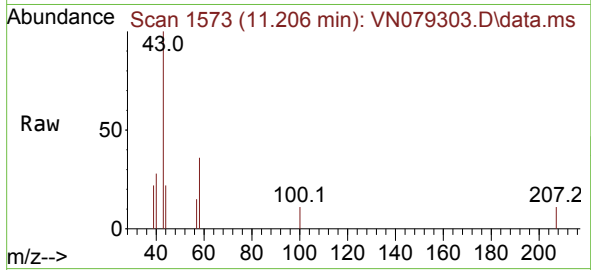
Tgt Ion: 43 Resp: 984  
 Ion Ratio Lower Upper  
 43 100  
 58 206.4 33.6 50.4#  
 85 0.0 15.0 22.4#



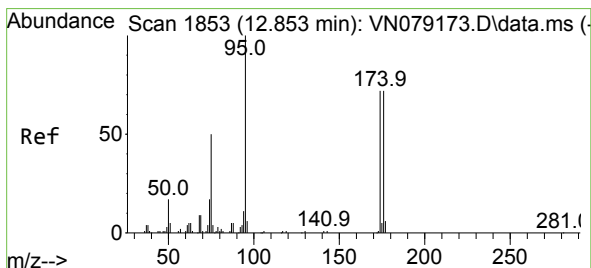
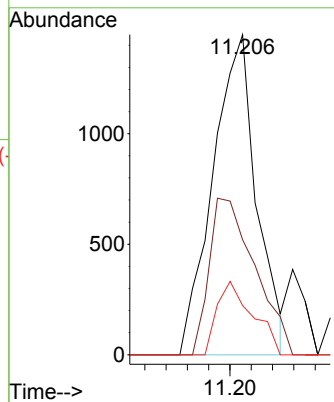
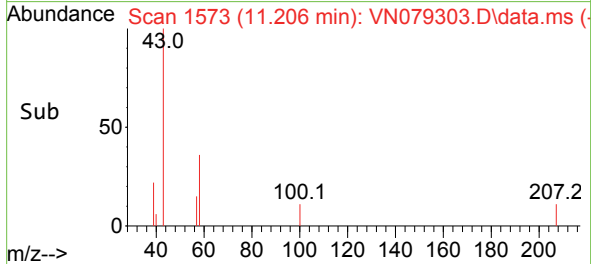


#59  
 2-Hexanone  
 Concen: 1.181 ug/l  
 RT: 11.206 min Scan# 11  
 Delta R.T. 0.006 min  
 Lab File: VN079303.D  
 Acq: 19 Sep 2023 15:50

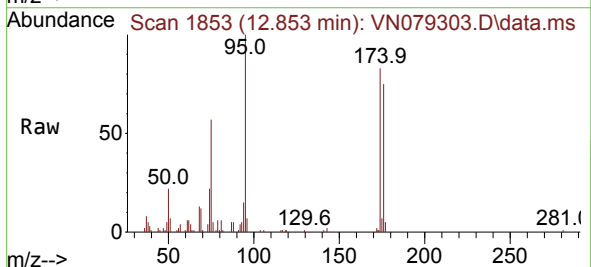
Instrument :  
 MSVOA\_N  
 ClientSampleId :



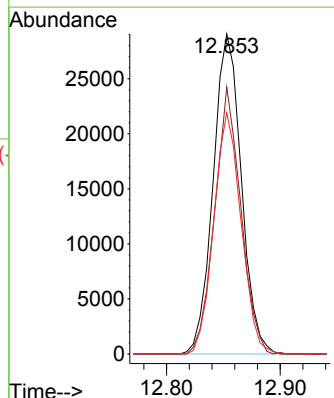
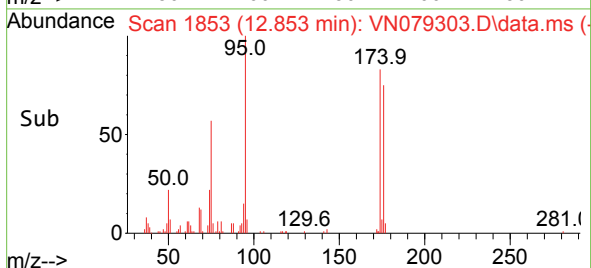
Tgt Ion: 43 Resp: 2067  
 Ion Ratio Lower Upper  
 43 100  
 58 51.2 46.4 69.6  
 57 18.7 15.3 22.9

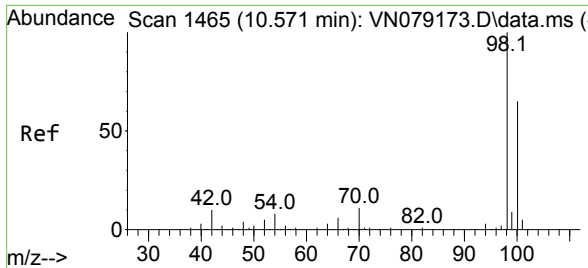


#60  
 4-Bromofluorobenzene  
 Concen: 24.998 ug/l  
 RT: 12.853 min Scan# 1853  
 Delta R.T. -0.000 min  
 Lab File: VN079303.D  
 Acq: 19 Sep 2023 15:50



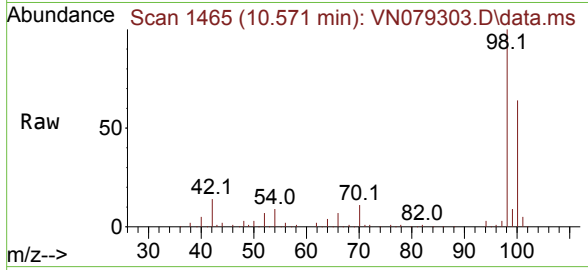
Tgt Ion: 95 Resp: 50034  
 Ion Ratio Lower Upper  
 95 100  
 174 77.4 59.5 89.3  
 176 73.1 59.1 88.7



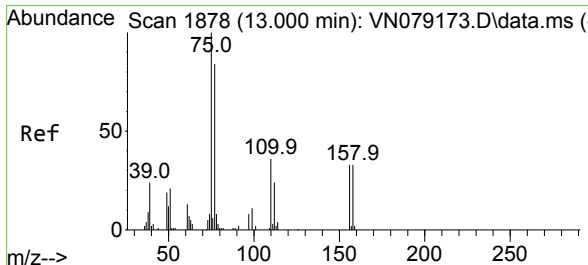
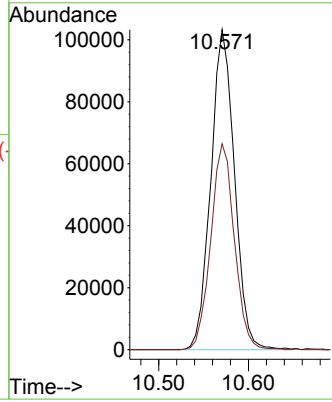
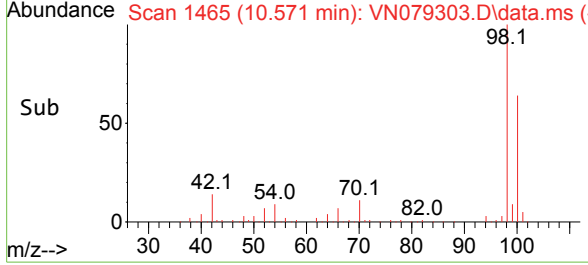


#63  
 Toluene-d8  
 Concen: 29.750 ug/l  
 RT: 10.571 min Scan# 14  
 Delta R.T. -0.000 min  
 Lab File: VN079303.D  
 Acq: 19 Sep 2023 15:50

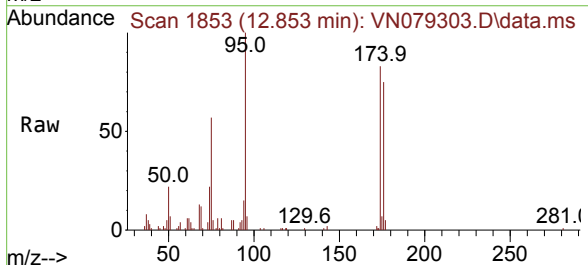
Instrument : MSVOA\_N  
 ClientSampleId :



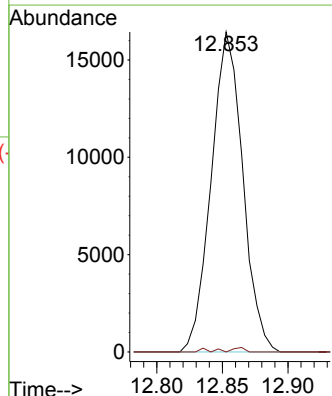
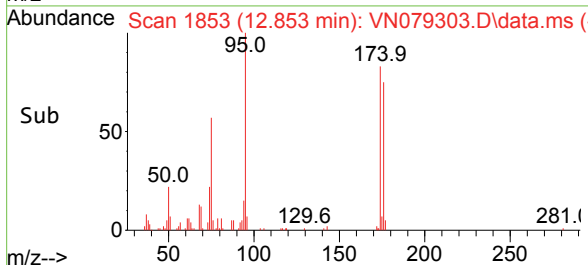
Tgt Ion: 98 Resp: 188859  
 Ion Ratio Lower Upper  
 98 100  
 100 64.3 52.5 78.7

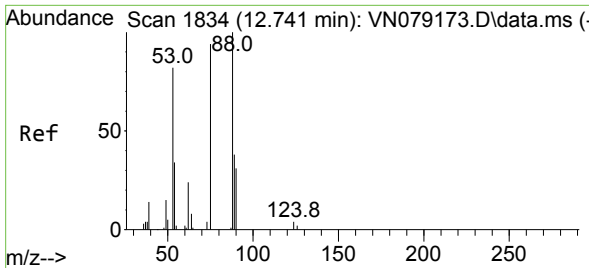


#72  
 1,2,3-Trichloropropane  
 Concen: 11.896 ug/l  
 RT: 12.853 min Scan# 1853  
 Delta R.T. -0.147 min  
 Lab File: VN079303.D  
 Acq: 19 Sep 2023 15:50



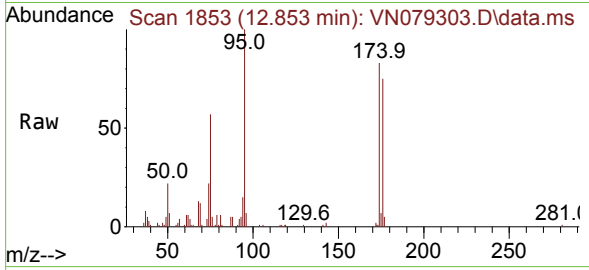
Tgt Ion: 75 Resp: 27504  
 Ion Ratio Lower Upper  
 75 100  
 77 0.5 0.0 252.2



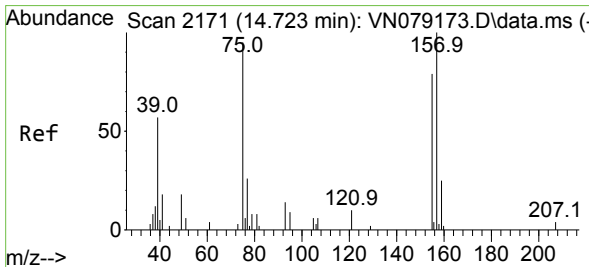
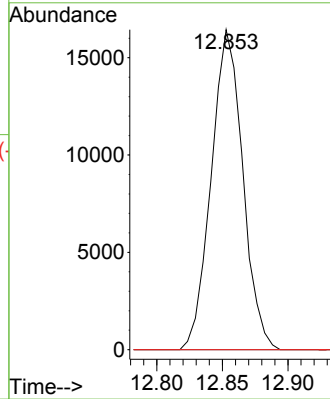
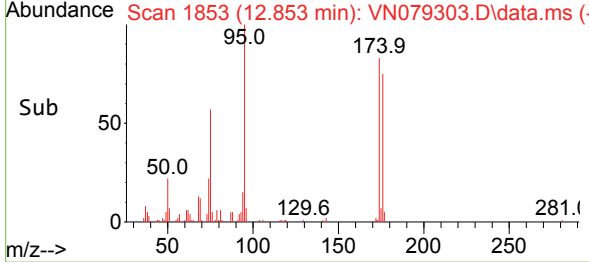


#77  
 t-1,4-Dichloro-2-butene  
 Concen: 33.788 ug/l  
 RT: 12.853 min Scan# 11  
 Delta R.T. 0.112 min  
 Lab File: VN079303.D  
 Acq: 19 Sep 2023 15:50

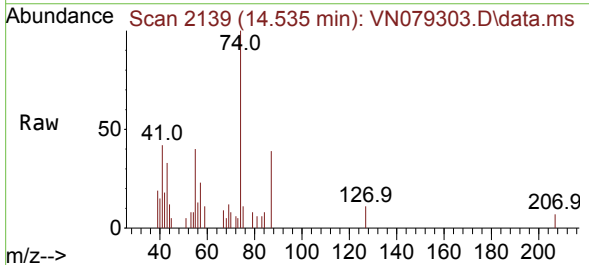
Instrument :  
 MSVOA\_N  
 ClientSampleId :



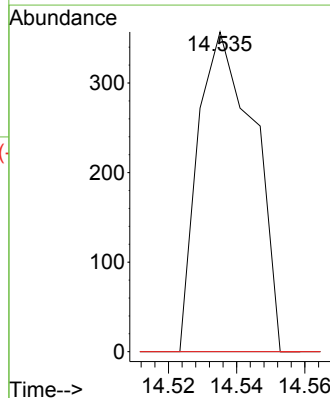
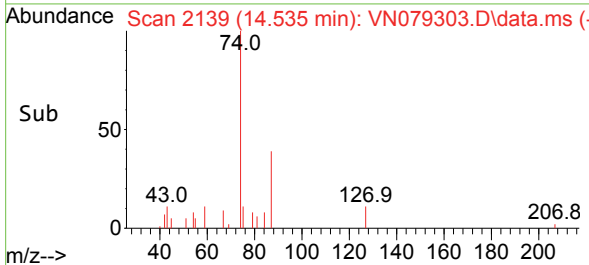
Tgt Ion: 75 Resp: 27504  
 Ion Ratio Lower Upper  
 75 100  
 53 0.0 44.1 132.4#  
 89 0.0 22.4 67.3#

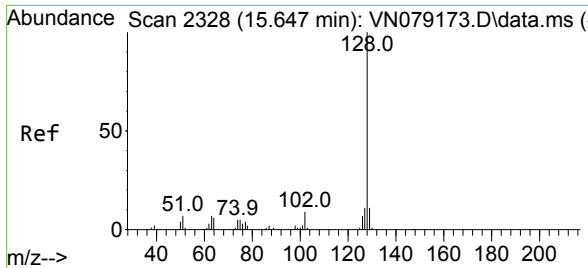


#88  
 1,2-Dibromo-3-Chloropropane  
 Concen: 0.876 ug/l  
 RT: 14.535 min Scan# 2139  
 Delta R.T. -0.188 min  
 Lab File: VN079303.D  
 Acq: 19 Sep 2023 15:50



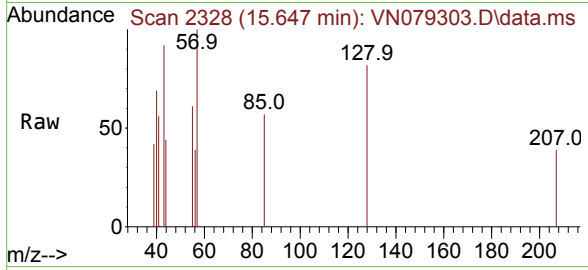
Tgt Ion: 75 Resp: 407  
 Ion Ratio Lower Upper  
 75 100  
 155 0.0 68.1 102.1#  
 157 0.0 83.9 125.9#





#91  
 Naphthalene  
 Concen: 0.206 ug/l  
 RT: 15.647 min Scan# 21  
 Delta R.T. -0.000 min  
 Lab File: VN079303.D  
 Acq: 19 Sep 2023 15:50

Instrument :  
 MSVOA\_N  
 ClientSampleId :



Tgt Ion:128 Resp: 663

Ion	Ratio	Lower	Upper
128	100		
127	0.0	10.1	15.1#
129	0.0	8.5	12.7#

