

Data Path : Z:\voasrv\HPCHEM1\MSVOA_N\Data\VN091924\
 Data File : VN084042.D
 Acq On : 19 Sep 2024 18:28
 Operator : JC\MD
 Sample : P4003-07
 Misc : 5.0mL/MSVOA_N/WATER
 ALS Vial : 14 Sample Multiplier: 1

Instrument :
 MSVOA_N
 ClientSampleId :

Quant Time: Sep 20 01:35:17 2024
 Quant Method : Z:\voasrv\HPCHEM1\MSVOA_N\methods\82N091024W.M
 Quant Title : SW846 8260
 QLast Update : Wed Sep 11 15:18:56 2024
 Response via : Initial Calibration

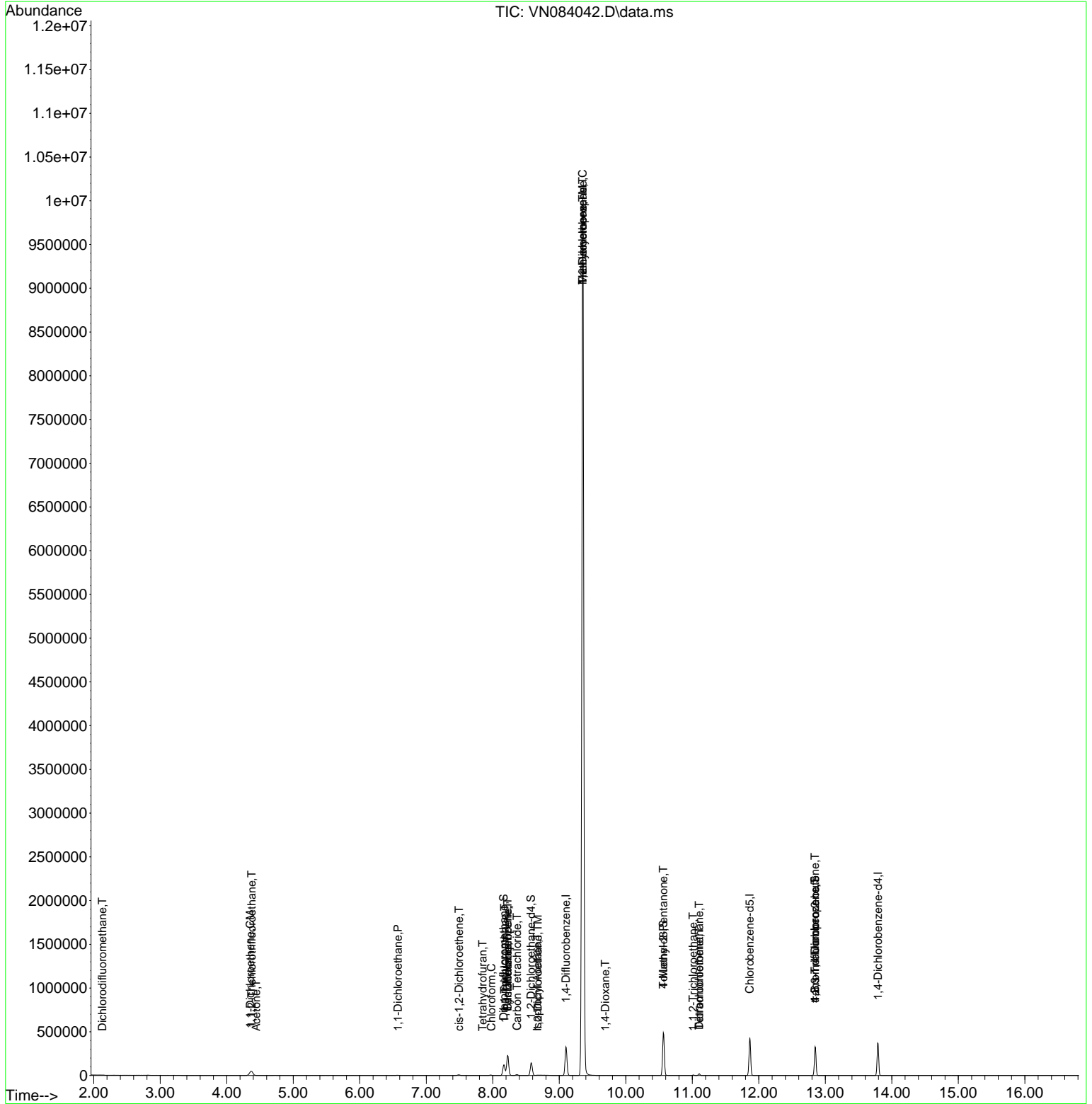
Compound	R.T.	QIon	Response	Conc	Units	Dev(Min)
Internal Standards						
1) Pentafluorobenzene	8.224	168	152651	50.000	ug/l	0.00
34) 1,4-Difluorobenzene	9.100	114	266980	50.000	ug/l	0.00
63) Chlorobenzene-d5	11.865	117	227483	50.000	ug/l	0.00
72) 1,4-Dichlorobenzene-d4	13.794	152	92485	50.000	ug/l	0.00
System Monitoring Compounds						
33) 1,2-Dichloroethane-d4	8.577	65	122326	53.145	ug/l	0.00
Spiked Amount	50.000	Range 74 - 125	Recovery	=	106.280%	
35) Dibromofluoromethane	8.165	113	85424	49.980	ug/l	0.00
Spiked Amount	50.000	Range 75 - 124	Recovery	=	99.960%	
50) Toluene-d8	10.565	98	325275	55.050	ug/l	0.00
Spiked Amount	50.000	Range 86 - 113	Recovery	=	110.100%	
62) 4-Bromofluorobenzene	12.847	95	112880	46.304	ug/l	0.00
Spiked Amount	50.000	Range 77 - 121	Recovery	=	92.600%	
Target Compounds						
						Qvalue
2) Dichlorodifluoromethane	2.130	85	523	0.295	ug/l #	49
3) Chloromethane	2.359	50	744	Below Cal		89
9) 1,1,2-Trichlorotrifluo...	4.377	101	30562	17.481	ug/l	97
12) 1,1-Dichloroethene	4.353	96	7251	4.392	ug/l #	70
16) Acetone	4.442	43	862	0.934	ug/l #	45
18) Methyl Acetate	5.024	43	65	Below Cal		52
24) 1,1-Dichloroethane	6.577	63	4229	1.212	ug/l #	82
27) cis-1,2-Dichloroethene	7.494	96	4633	2.206	ug/l	91
29) Tetrahydrofuran	7.847	42	569	0.793	ug/l #	40
30) Chloroform	7.977	83	5050	1.363	ug/l	92
31) Cyclohexane	8.224	56	4356	1.309	ug/l #	41
32) 1,1,1-Trichloroethane	8.177	97	788	0.231	ug/l #	22
36) 1,1-Dichloropropene	8.224	75	14292	5.556	ug/l #	49
38) Carbon Tetrachloride	8.365	117	7800	2.673	ug/l	91
39) Methylcyclohexane	9.353	83	46165	15.766	ug/l #	1
42) 1,2-Dichloroethane	8.677	62	981	0.339	ug/l #	77
43) Isopropyl Acetate	8.671	43	1769	0.418	ug/l #	57
44) Trichloroethene	9.353	130	3318611	1850.784	ug/l	90
45) 1,2-Dichloropropane	9.353	63	13349	7.133	ug/l #	1
49) 1,4-Dioxane	9.694	88	717	21.710	ug/l #	54
51) 4-Methyl-2-Pentanone	10.565	43	1633	0.709	ug/l #	1
55) 1,1,2-Trichloroethane	11.012	97	2007	1.135	ug/l #	82
60) Dibromochloromethane	11.106	129	4344	2.195	ug/l #	10
64) Tetrachloroethene	11.106	164	4305	2.846	ug/l	94
76) 1,2,3-Trichloropropane	12.847	75	65194	34.935	ug/l #	1
81) trans-1,4-Dichloro-2-b...	12.847	75	65194	91.497	ug/l #	9

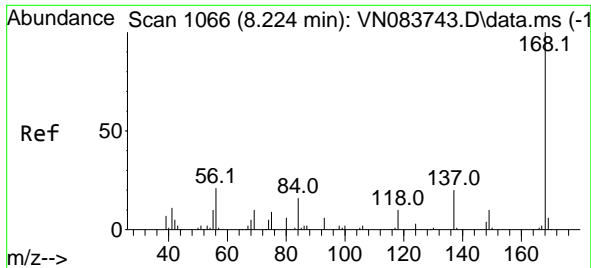
(#) = qualifier out of range (m) = manual integration (+) = signals summed

Data Path : Z:\voasrv\HPCHEM1\MSVOA_N\Data\VN091924\
 Data File : VN084042.D
 Acq On : 19 Sep 2024 18:28
 Operator : JC\MD
 Sample : P4003-07
 Misc : 5.0mL/MSVOA_N/WATER
 ALS Vial : 14 Sample Multiplier: 1

Instrument :
 MSVOA_N
 ClientSampleId :

Quant Time: Sep 20 01:35:17 2024
 Quant Method : Z:\voasrv\HPCHEM1\MSVOA_N\methods\82N091024W.M
 Quant Title : SW846 8260
 QLast Update : Wed Sep 11 15:18:56 2024
 Response via : Initial Calibration

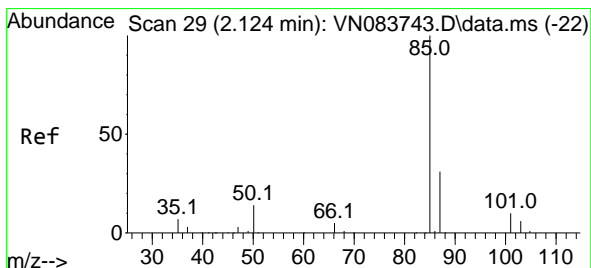
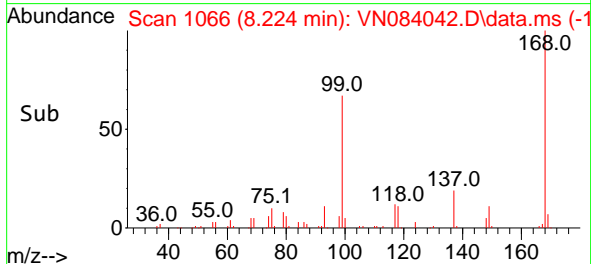
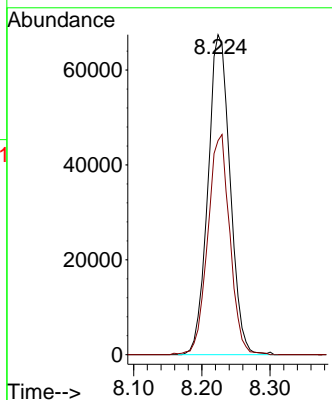
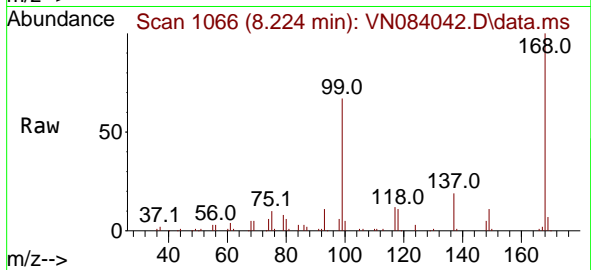




#1
 Pentafluorobenzene
 Concen: 50.000 ug/l
 RT: 8.224 min Scan# 1066
 Delta R.T. -0.000 min
 Lab File: VN084042.D
 Acq: 19 Sep 2024 18:28

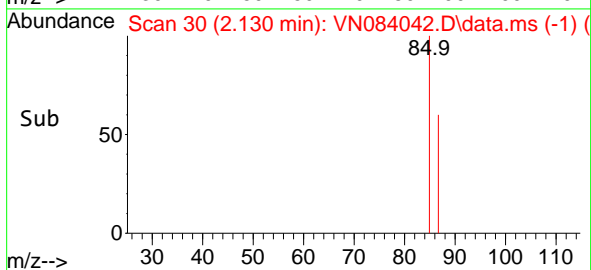
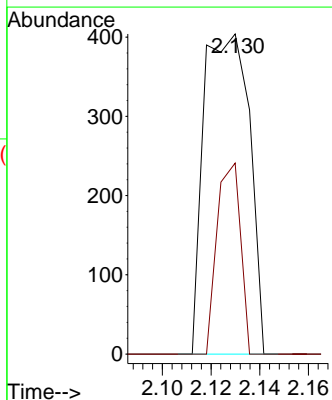
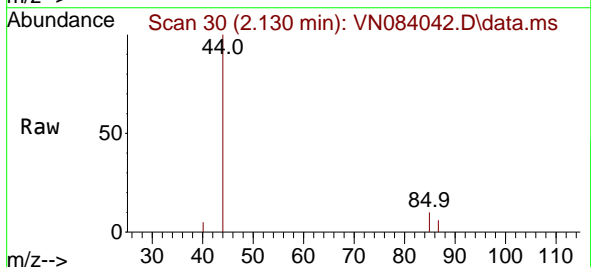
Instrument : MSVOA_N
 ClientSampleId :

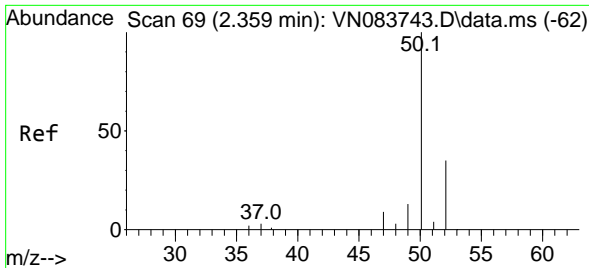
Tgt Ion:168 Resp: 152651
 Ion Ratio Lower Upper
 168 100
 99 66.9 54.2 81.2



#2
 Dichlorodifluoromethane
 Concen: 0.295 ug/l
 RT: 2.130 min Scan# 30
 Delta R.T. 0.006 min
 Lab File: VN084042.D
 Acq: 19 Sep 2024 18:28

Tgt Ion: 85 Resp: 523
 Ion Ratio Lower Upper
 85 100
 87 59.7 15.7 47.0#

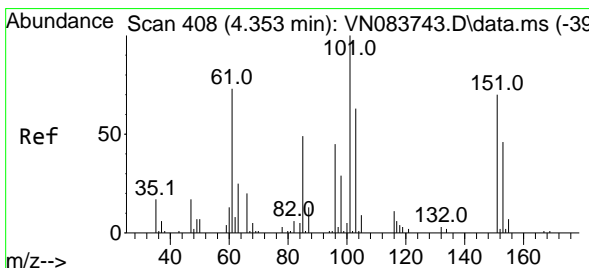
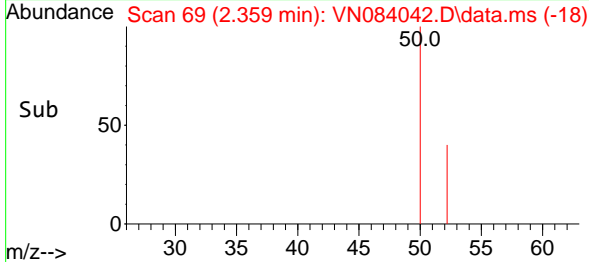
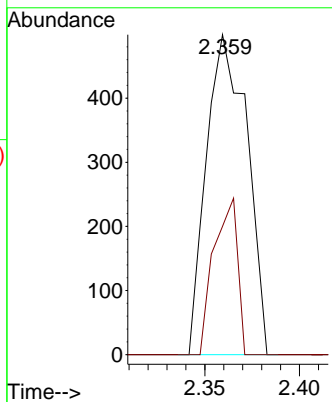
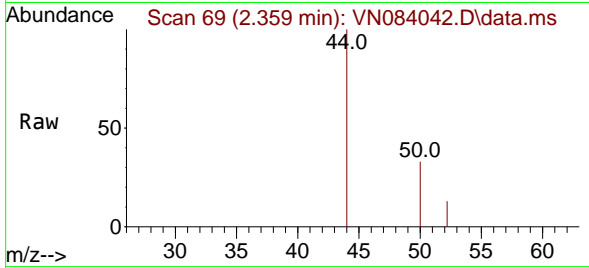




#3
 Chloromethane
 Concen: Below Cal
 RT: 2.359 min Scan# 69
 Delta R.T. 0.000 min
 Lab File: VN084042.D
 Acq: 19 Sep 2024 18:28

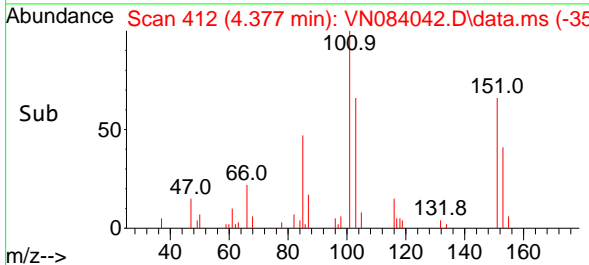
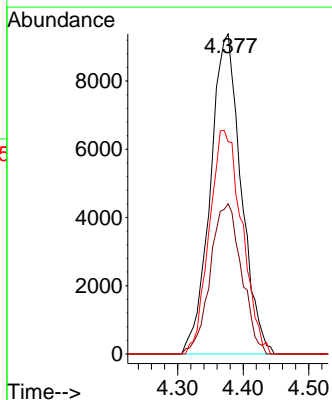
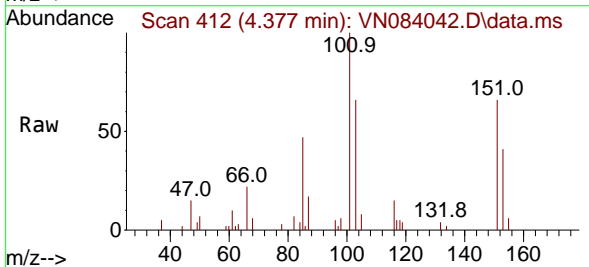
Instrument :
 MSVOA_N
 ClientSampleId :

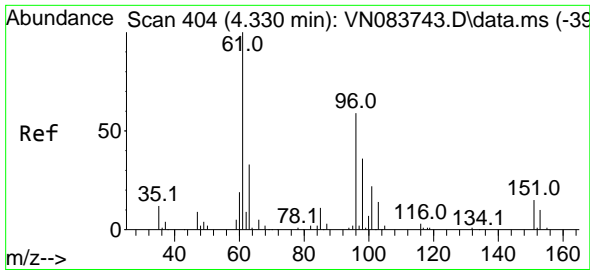
Tgt Ion: 50 Resp: 744
 Ion Ratio Lower Upper
 50 100
 52 40.1 27.2 40.8



#9
 1,1,2-Trichlorotrifluoroethane
 Concen: 17.481 ug/l
 RT: 4.377 min Scan# 412
 Delta R.T. 0.023 min
 Lab File: VN084042.D
 Acq: 19 Sep 2024 18:28

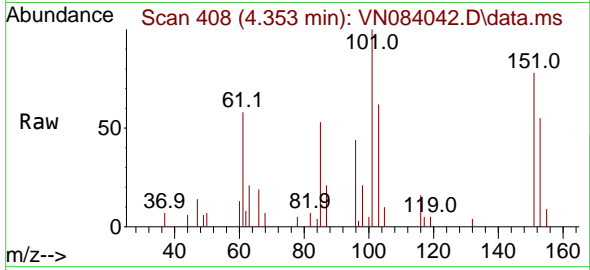
Tgt Ion: 101 Resp: 30562
 Ion Ratio Lower Upper
 101 100
 85 47.7 36.2 54.4
 151 74.0 57.7 86.5



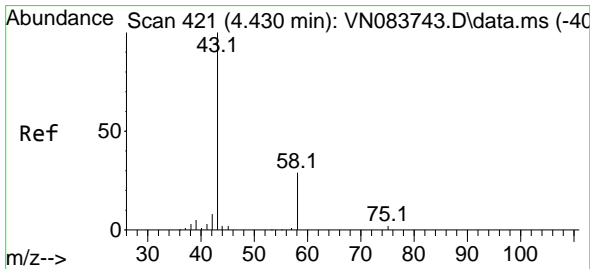
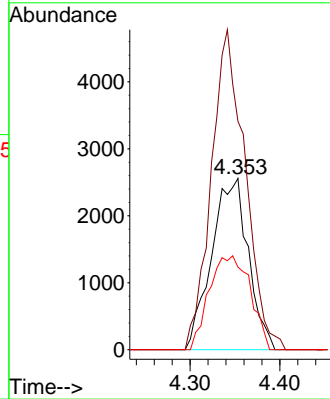
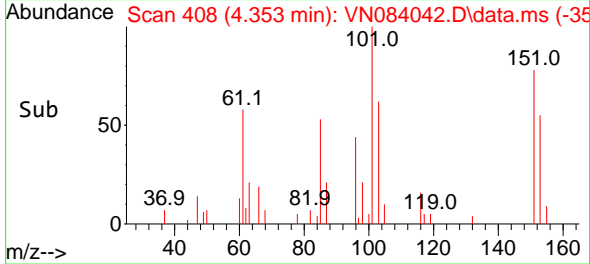


#12
 1,1-Dichloroethene
 Concen: 4.392 ug/l
 RT: 4.353 min Scan# 408
 Delta R.T. 0.023 min
 Lab File: VN084042.D
 Acq: 19 Sep 2024 18:28

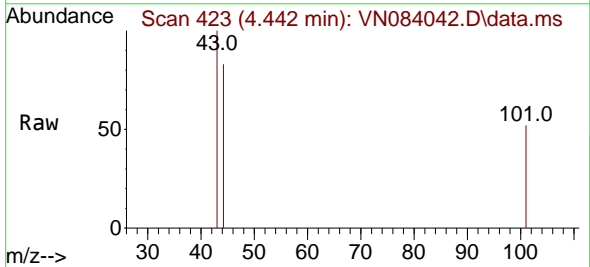
Instrument :
 MSVOA_N
 ClientSampleId :



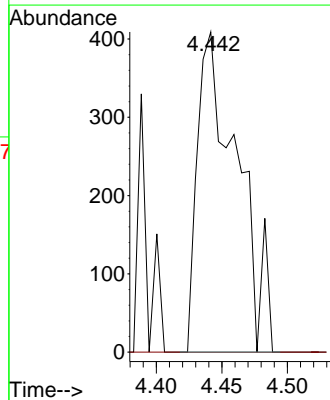
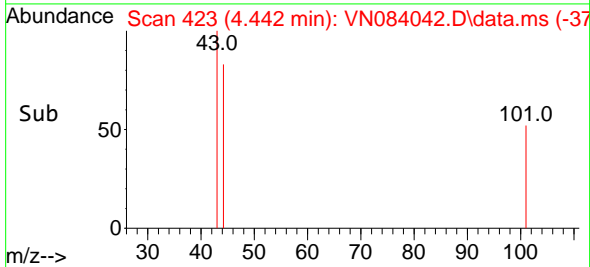
Tgt Ion: 96 Resp: 7251
 Ion Ratio Lower Upper
 96 100
 61 133.3 143.4 215.0#
 98 48.2 52.7 79.1#

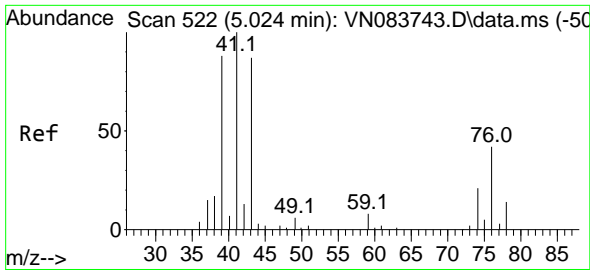


#16
 Acetone
 Concen: 0.934 ug/l
 RT: 4.442 min Scan# 423
 Delta R.T. 0.012 min
 Lab File: VN084042.D
 Acq: 19 Sep 2024 18:28



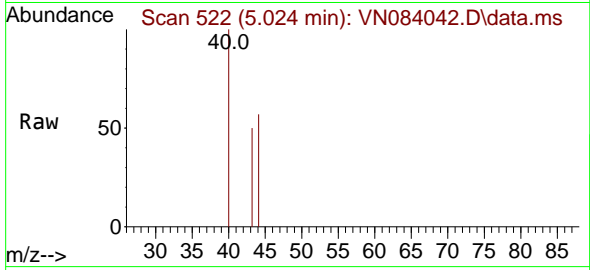
Tgt Ion: 43 Resp: 862
 Ion Ratio Lower Upper
 43 100
 58 0.0 23.7 35.5#



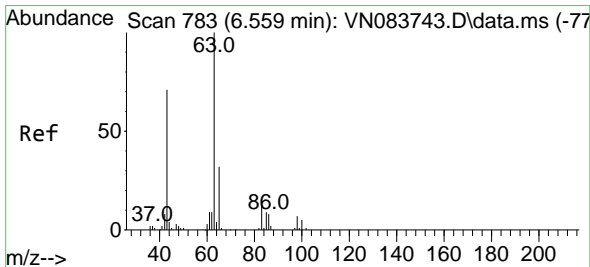
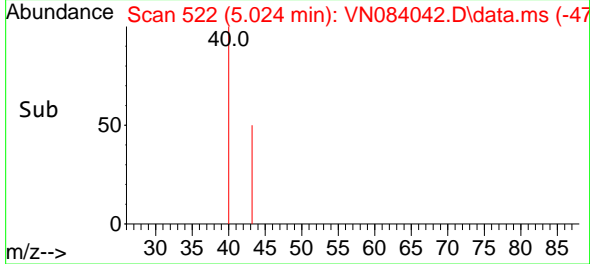
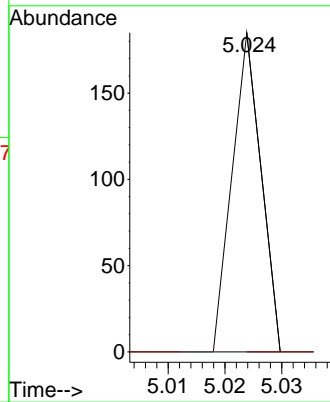


#18
 Methyl Acetate
 Concen: Below Cal
 RT: 5.024 min Scan# 51
 Delta R.T. -0.000 min
 Lab File: VN084042.D
 Acq: 19 Sep 2024 18:28

Instrument :
 MSVOA_N
 ClientSampleId :

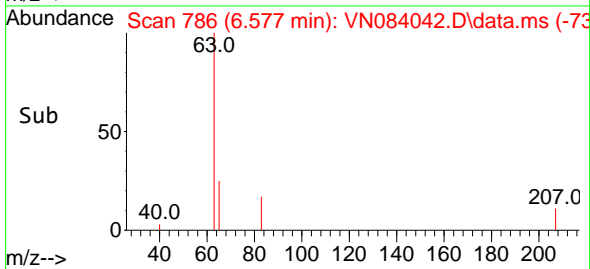
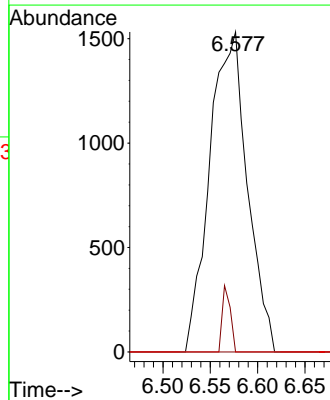
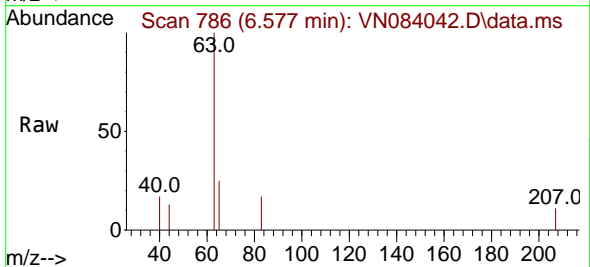


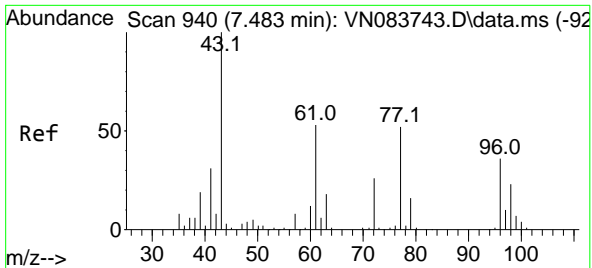
Tgt Ion: 43 Resp: 65
 Ion Ratio Lower Upper
 43 100
 74 0.0 19.0 28.4#



#24
 1,1-Dichloroethane
 Concen: 1.212 ug/l
 RT: 6.577 min Scan# 786
 Delta R.T. 0.018 min
 Lab File: VN084042.D
 Acq: 19 Sep 2024 18:28

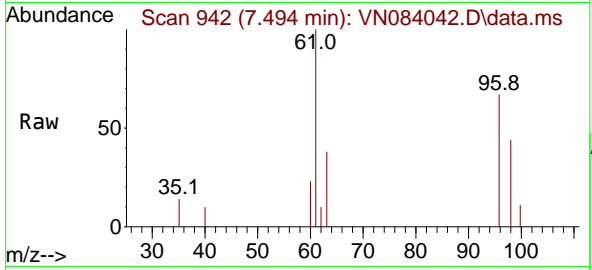
Tgt Ion: 63 Resp: 4229
 Ion Ratio Lower Upper
 63 100
 98 0.0 3.5 10.4#
 100 0.0 2.5 7.5#



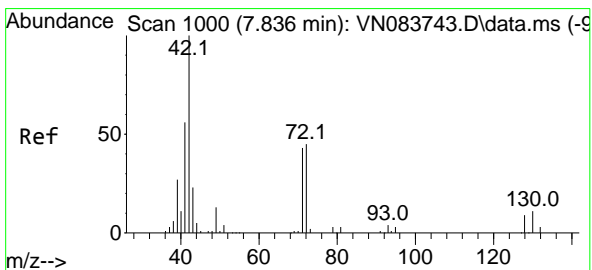
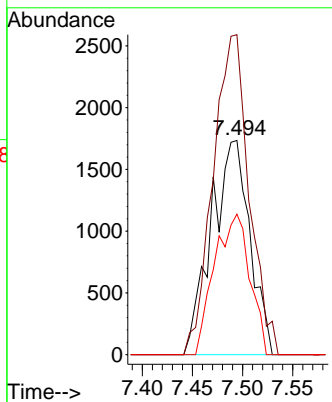
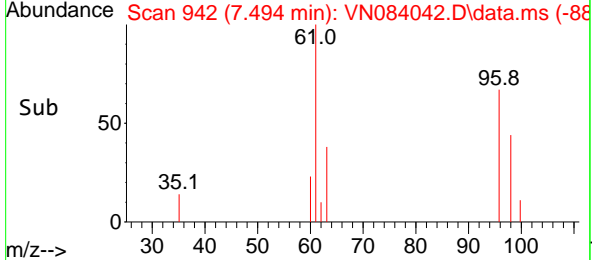


#27
 cis-1,2-Dichloroethene
 Concen: 2.206 ug/l
 RT: 7.494 min Scan# 94
 Delta R.T. 0.012 min
 Lab File: VN084042.D
 Acq: 19 Sep 2024 18:28

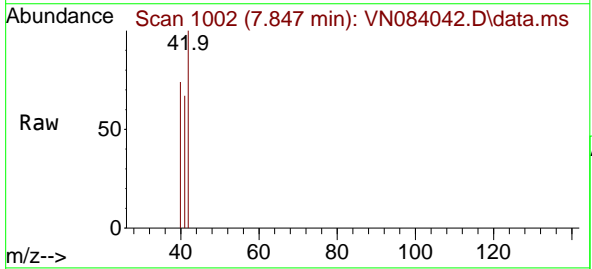
Instrument :
 MSVOA_N
 ClientSampleId :



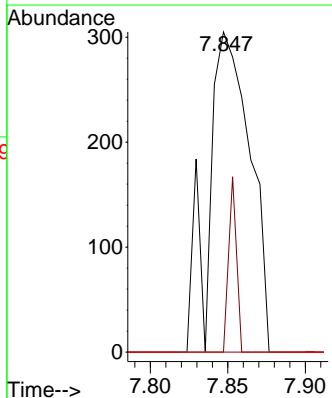
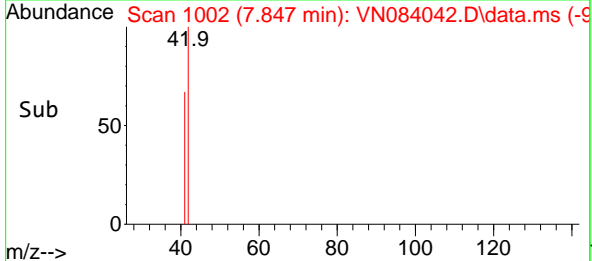
Tgt Ion	Resp	Lower	Upper
96	4633		
96	100		
61	139.8	0.0	306.2
98	60.2	0.0	128.6

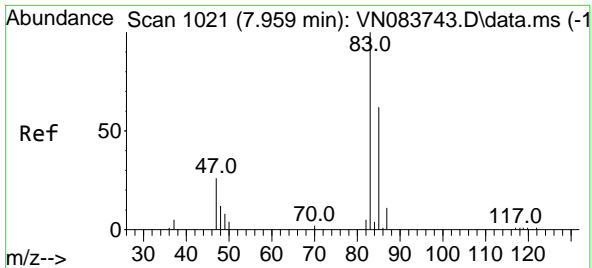


#29
 Tetrahydrofuran
 Concen: 0.793 ug/l
 RT: 7.847 min Scan# 1002
 Delta R.T. 0.012 min
 Lab File: VN084042.D
 Acq: 19 Sep 2024 18:28



Tgt Ion	Resp	Lower	Upper
42	569		
42	100		
72	10.4	35.9	53.9#
71	0.0	33.9	50.9#

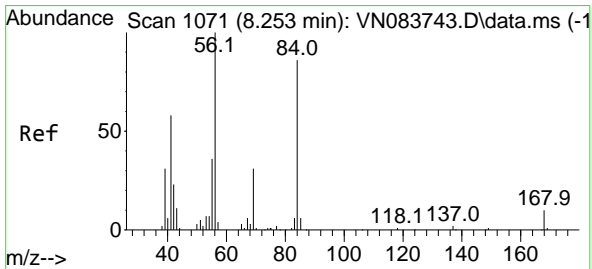
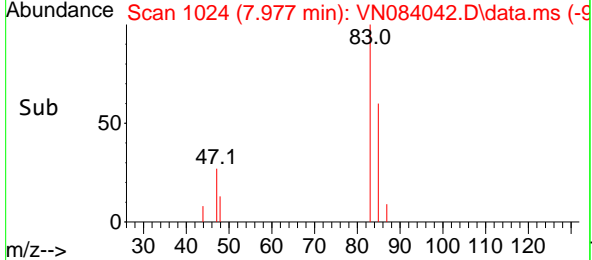
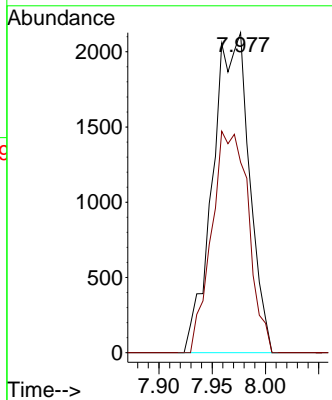
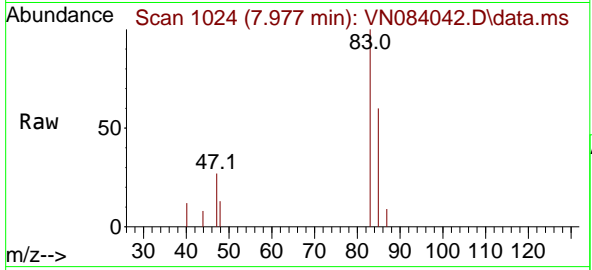




#30
 Chloroform
 Concen: 1.363 ug/l
 RT: 7.977 min Scan# 1066
 Delta R.T. 0.018 min
 Lab File: VN084042.D
 Acq: 19 Sep 2024 18:28

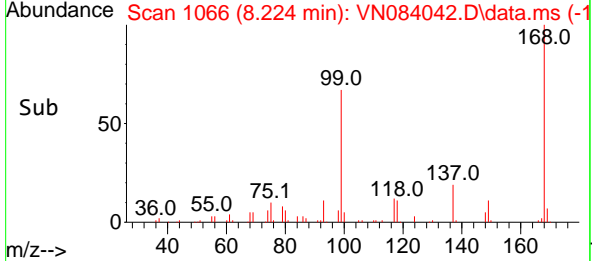
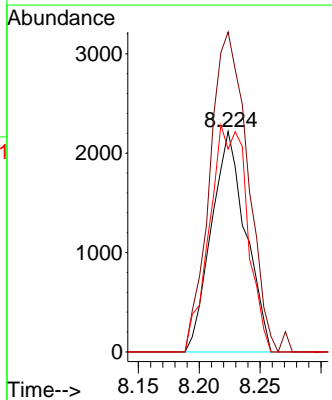
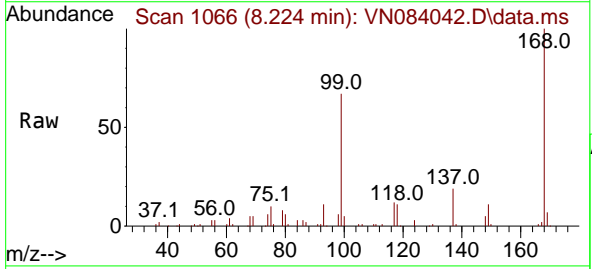
Instrument : MSVOA_N
 ClientSampleId :

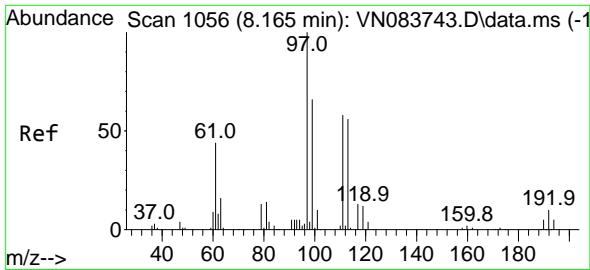
Tgt Ion	Resp	Lower	Upper
83	100		
85	59.5	52.8	79.2



#31
 Cyclohexane
 Concen: 1.309 ug/l
 RT: 8.224 min Scan# 1066
 Delta R.T. -0.029 min
 Lab File: VN084042.D
 Acq: 19 Sep 2024 18:28

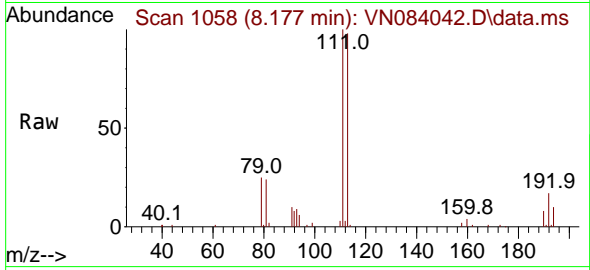
Tgt Ion	Resp	Lower	Upper
56	100		
69	145.1	26.9	40.3#
84	92.0	69.2	103.8



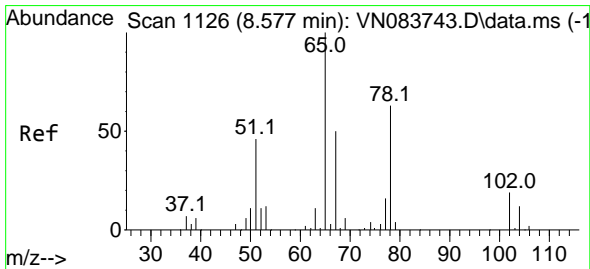
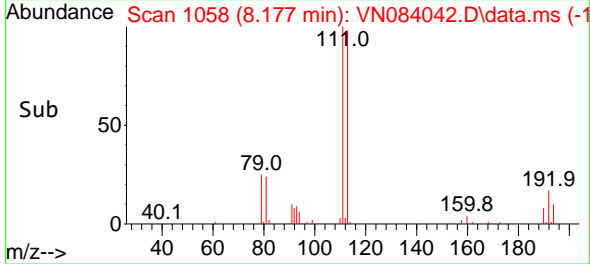
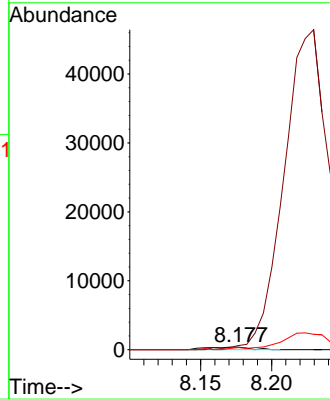


#32
 1,1,1-Trichloroethane
 Concen: 0.231 ug/l
 RT: 8.177 min Scan# 1058
 Delta R.T. 0.012 min
 Lab File: VN084042.D
 Acq: 19 Sep 2024 18:28

Instrument :
 MSVOA_N
 ClientSampleId :

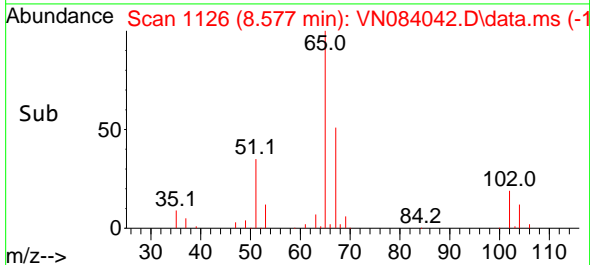
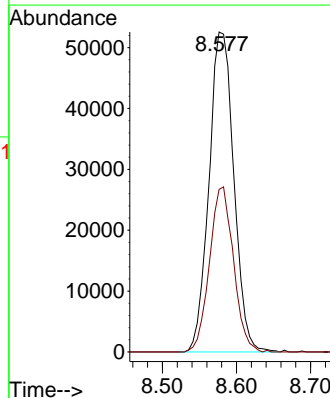
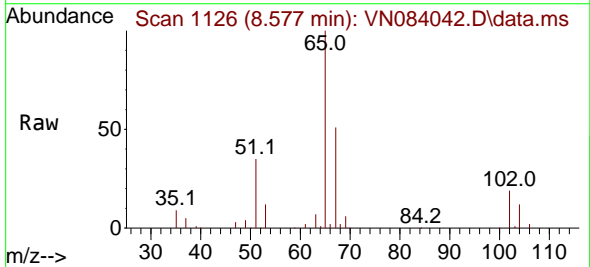


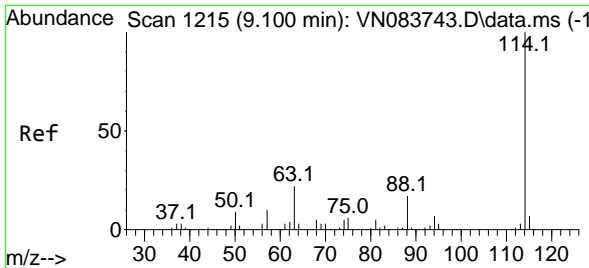
Tgt Ion: 97 Resp: 788
 Ion Ratio Lower Upper
 97 100
 99 0.0 52.3 78.5#
 61 0.0 38.2 57.2#



#33
 1,2-Dichloroethane-d4
 Concen: 53.145 ug/l
 RT: 8.577 min Scan# 1126
 Delta R.T. -0.000 min
 Lab File: VN084042.D
 Acq: 19 Sep 2024 18:28

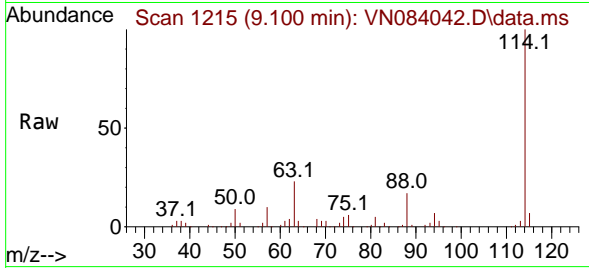
Tgt Ion: 65 Resp: 122326
 Ion Ratio Lower Upper
 65 100
 67 49.8 0.0 100.8





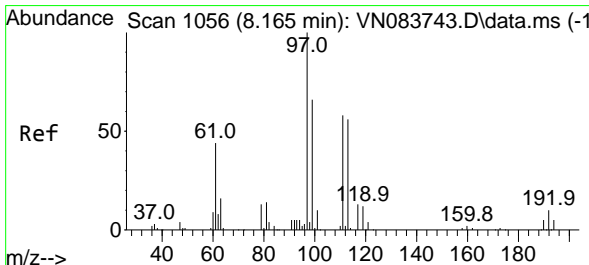
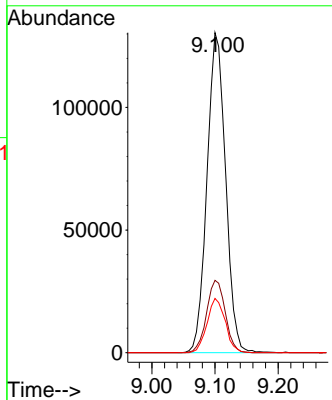
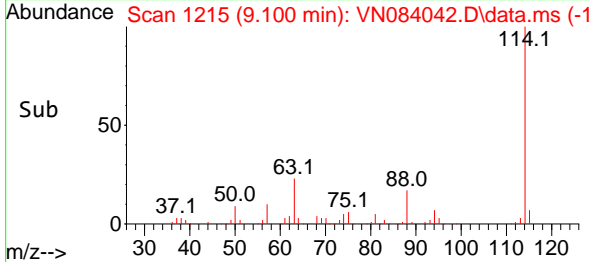
#34
 1,4-Difluorobenzene
 Concen: 50.000 ug/l
 RT: 9.100 min Scan# 11
 Delta R.T. -0.000 min
 Lab File: VN084042.D
 Acq: 19 Sep 2024 18:28

Instrument :
 MSVOA_N
 ClientSampleId :

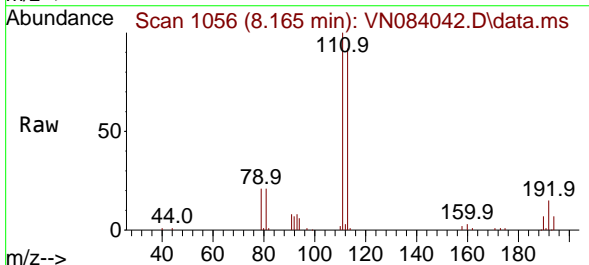


Tgt Ion:114 Resp: 266980

Ion	Ratio	Lower	Upper
114	100		
63	22.6	0.0	43.4
88	16.9	0.0	32.6

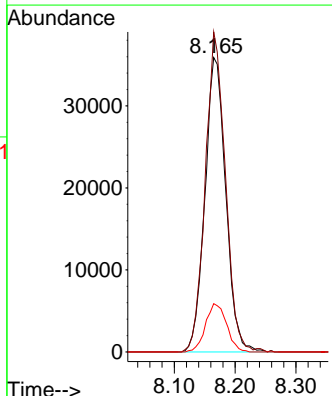
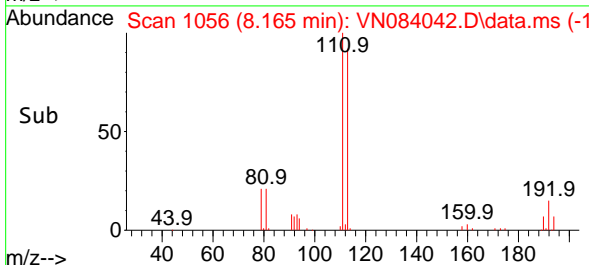


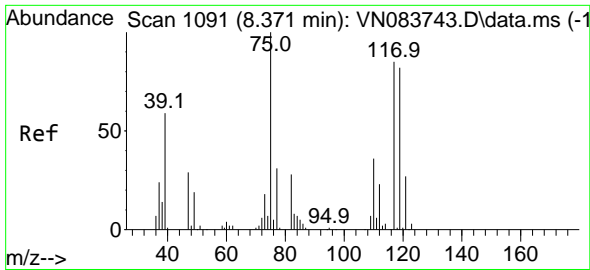
#35
 Dibromofluoromethane
 Concen: 49.980 ug/l
 RT: 8.165 min Scan# 1056
 Delta R.T. -0.000 min
 Lab File: VN084042.D
 Acq: 19 Sep 2024 18:28



Tgt Ion:113 Resp: 85424

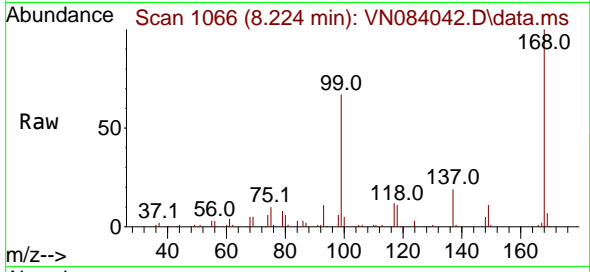
Ion	Ratio	Lower	Upper
113	100		
111	105.1	82.6	124.0
192	16.6	14.3	21.5



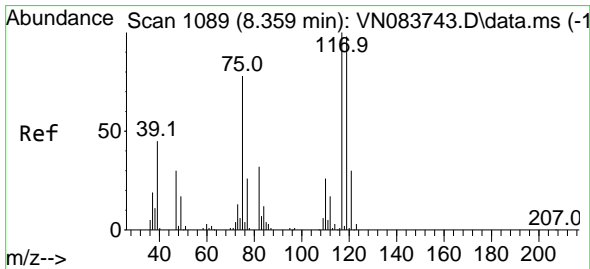
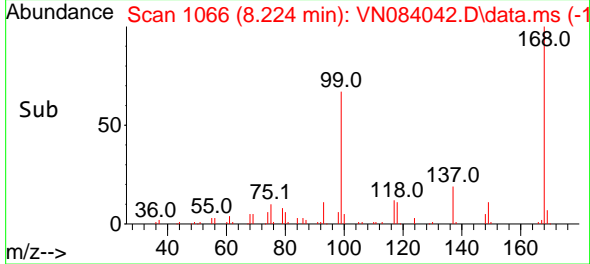
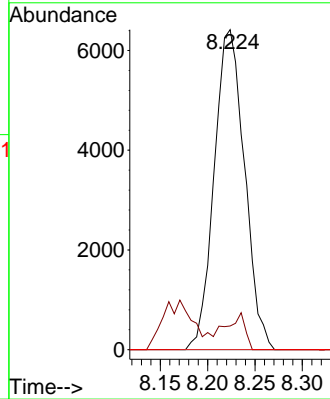


#36
 1,1-Dichloropropene
 Concen: 5.556 ug/l
 RT: 8.224 min Scan# 1066
 Delta R.T. -0.147 min
 Lab File: VN084042.D
 Acq: 19 Sep 2024 18:28

Instrument : MSVOA_N
 ClientSampleId :

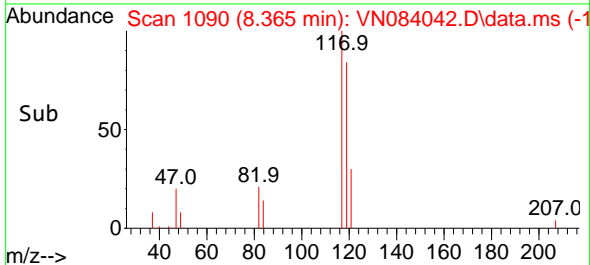
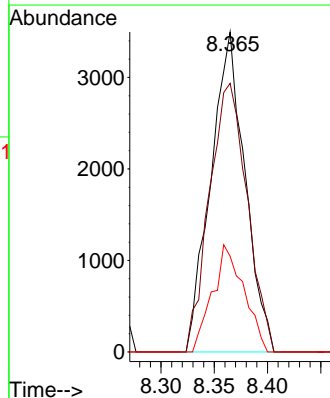
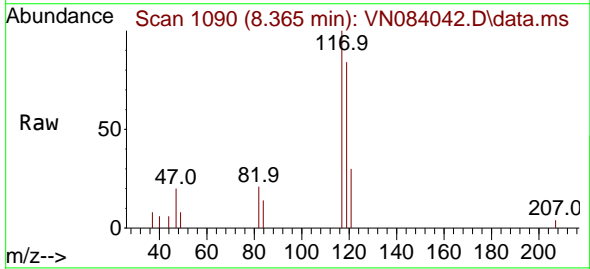


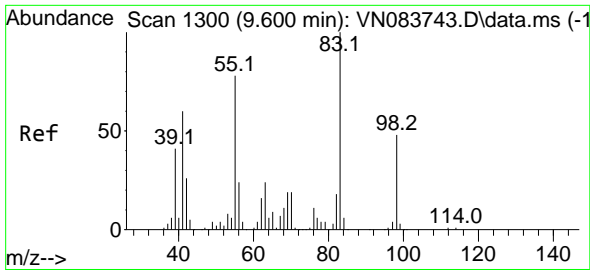
Tgt Ion: 75 Resp: 14292
 Ion Ratio Lower Upper
 75 100
 110 7.4 16.7 50.1#
 77 0.0 25.2 37.8#



#38
 Carbon Tetrachloride
 Concen: 2.673 ug/l
 RT: 8.365 min Scan# 1090
 Delta R.T. 0.006 min
 Lab File: VN084042.D
 Acq: 19 Sep 2024 18:28

Tgt Ion: 117 Resp: 7800
 Ion Ratio Lower Upper
 117 100
 119 83.9 76.1 114.1
 121 29.9 24.1 36.1

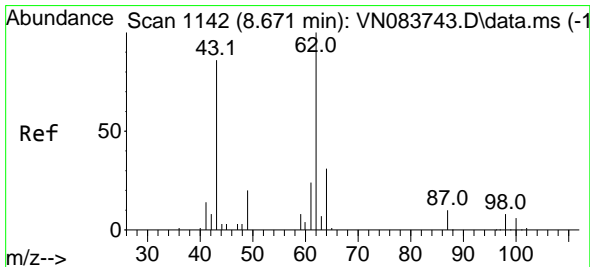
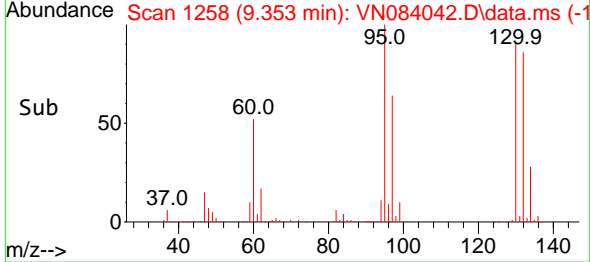
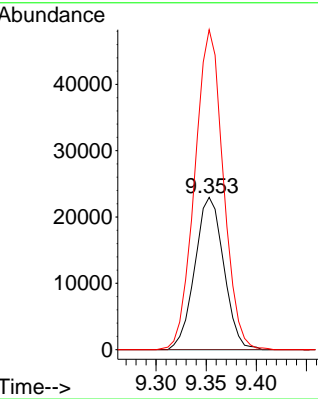
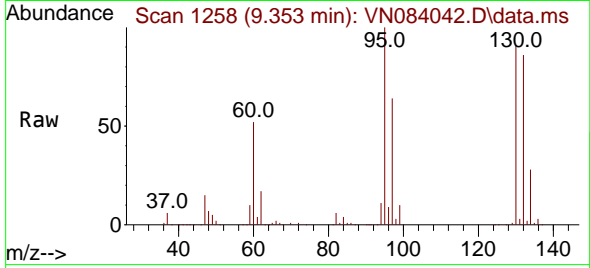




#39
 Methylcyclohexane
 Concen: 15.766 ug/l
 RT: 9.353 min Scan# 1128
 Delta R.T. -0.247 min
 Lab File: VN084042.D
 Acq: 19 Sep 2024 18:28

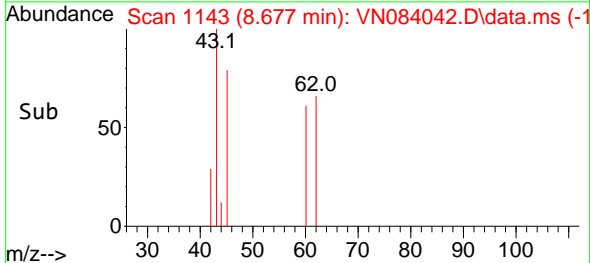
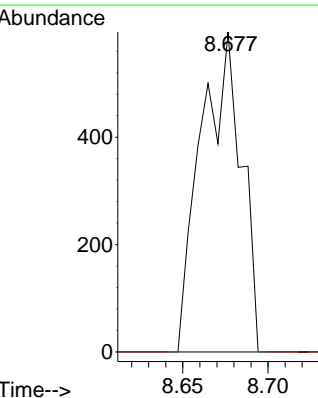
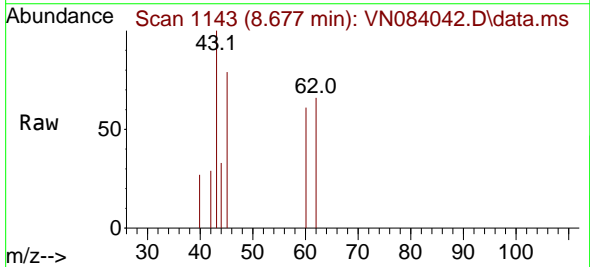
Instrument :
 MSVOA_N
 ClientSampleId :

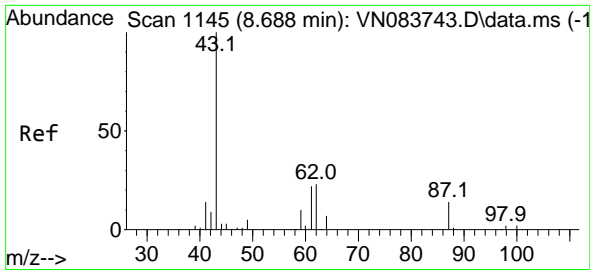
Tgt Ion	Resp	Lower	Upper
83	46165		
55	0.0	62.2	93.4#
98	209.5	37.6	56.4#



#42
 1,2-Dichloroethane
 Concen: 0.339 ug/l
 RT: 8.677 min Scan# 1143
 Delta R.T. 0.006 min
 Lab File: VN084042.D
 Acq: 19 Sep 2024 18:28

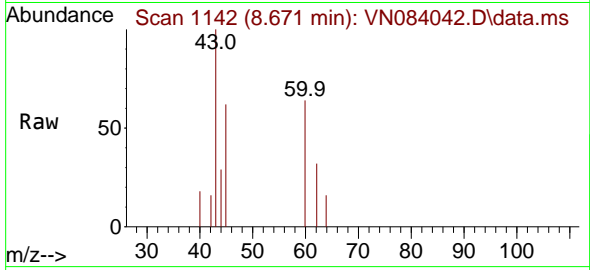
Tgt Ion	Resp	Lower	Upper
62	981		
62	100		
98	0.0	0.0	16.6



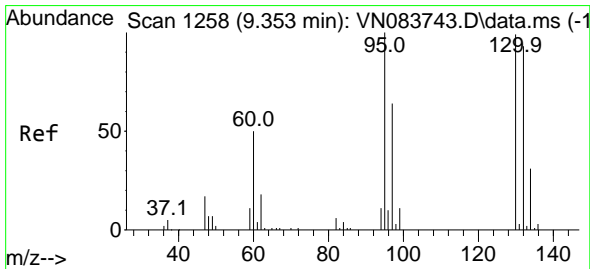
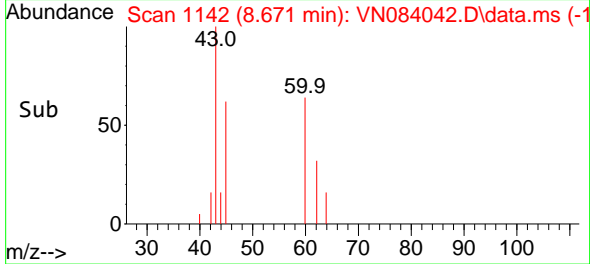
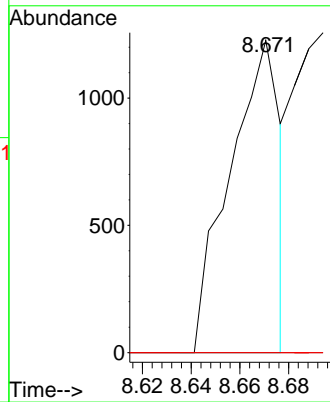


#43
 Isopropyl Acetate
 Concen: 0.418 ug/l
 RT: 8.671 min Scan# 1145
 Delta R.T. -0.018 min
 Lab File: VN084042.D
 Acq: 19 Sep 2024 18:28

Instrument :
 MSVOA_N
 ClientSampleId :

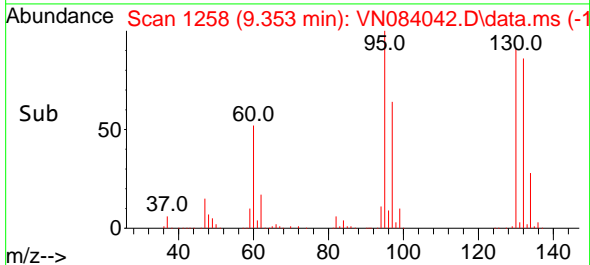
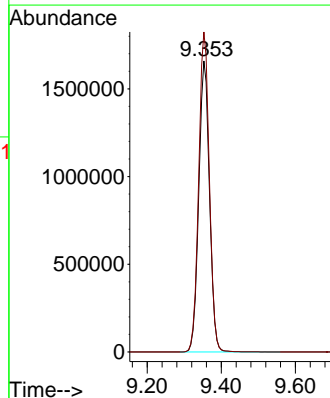
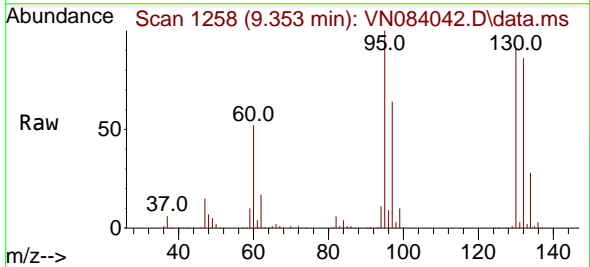


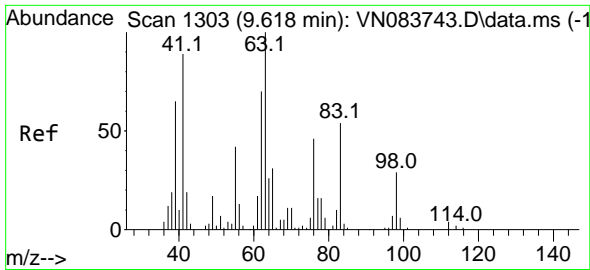
Tgt Ion: 43 Resp: 1769
 Ion Ratio Lower Upper
 43 100
 61 0.0 19.4 29.0#
 87 0.0 9.8 14.6#



#44
 Trichloroethene
 Concen: 1850.784 ug/l
 RT: 9.353 min Scan# 1258
 Delta R.T. -0.000 min
 Lab File: VN084042.D
 Acq: 19 Sep 2024 18:28

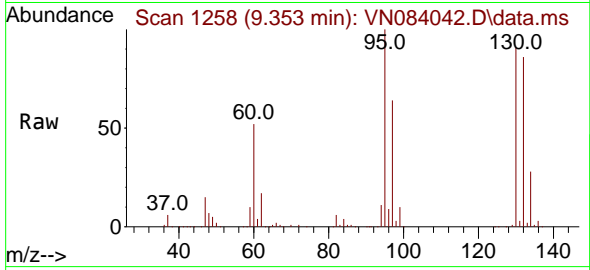
Tgt Ion:130 Resp: 3318611
 Ion Ratio Lower Upper
 130 100
 95 110.0 0.0 200.4



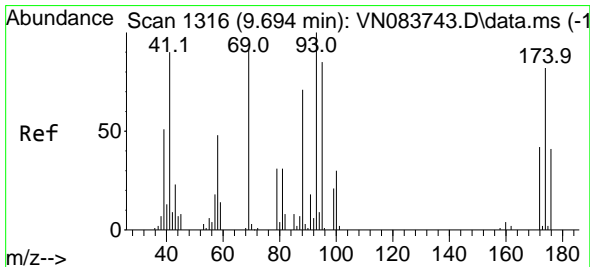
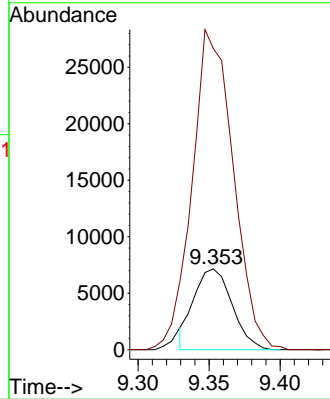
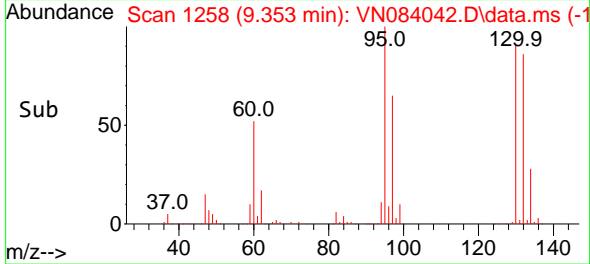


#45
 1,2-Dichloropropane
 Concen: 7.133 ug/l
 RT: 9.353 min Scan# 11
 Delta R.T. -0.265 min
 Lab File: VN084042.D
 Acq: 19 Sep 2024 18:28

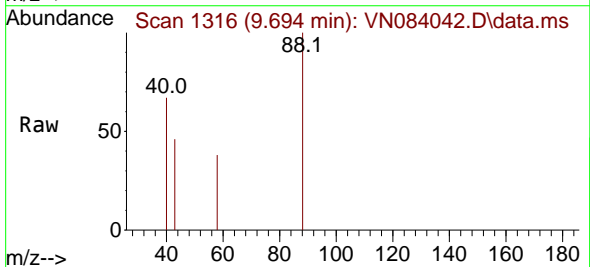
Instrument :
 MSVOA_N
 ClientSampleId :



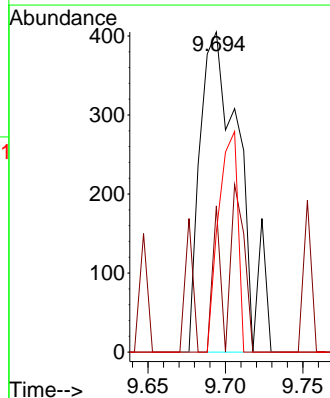
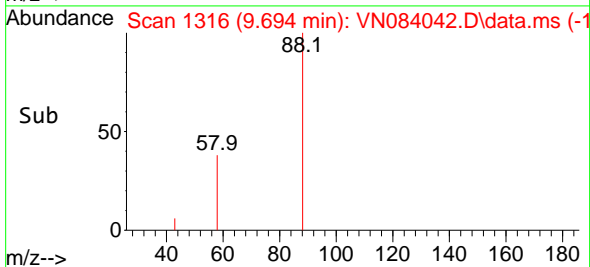
Tgt Ion: 63 Resp: 13349
 Ion Ratio Lower Upper
 63 100
 65 368.8 25.9 38.9#

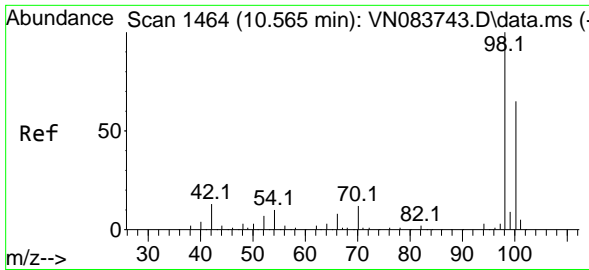


#49
 1,4-Dioxane
 Concen: 21.710 ug/l
 RT: 9.694 min Scan# 1316
 Delta R.T. -0.000 min
 Lab File: VN084042.D
 Acq: 19 Sep 2024 18:28



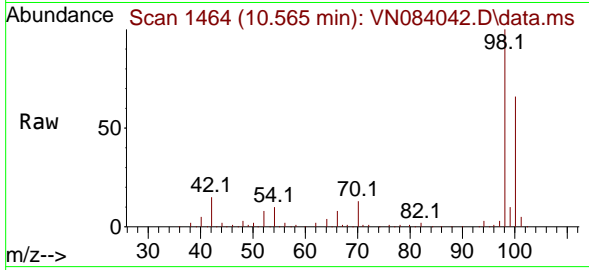
Tgt Ion: 88 Resp: 717
 Ion Ratio Lower Upper
 88 100
 43 26.9 0.0 0.0#
 58 33.6 57.1 85.7#



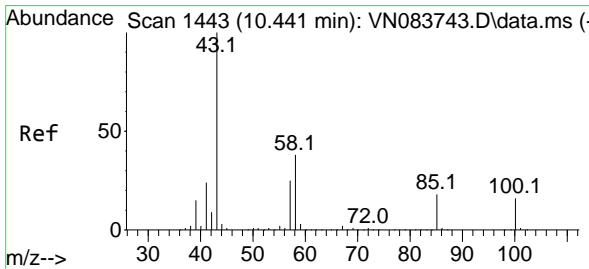
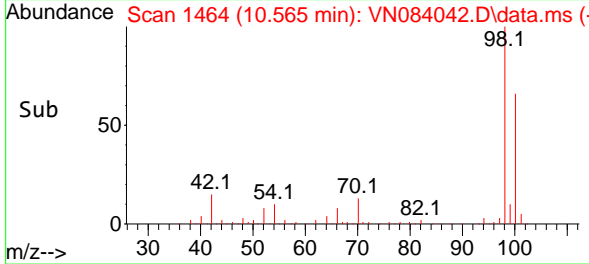
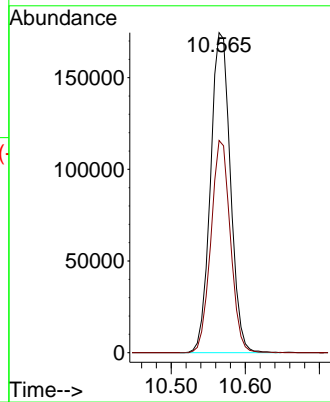


#50
 Toluene-d8
 Concen: 55.050 ug/l
 RT: 10.565 min Scan# 1464
 Delta R.T. -0.000 min
 Lab File: VN084042.D
 Acq: 19 Sep 2024 18:28

Instrument : MSVOA_N
 ClientSampleId :

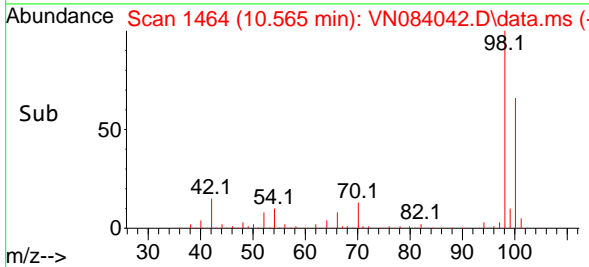
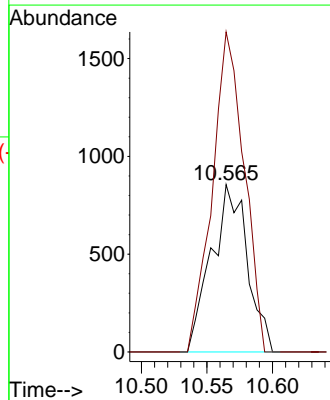
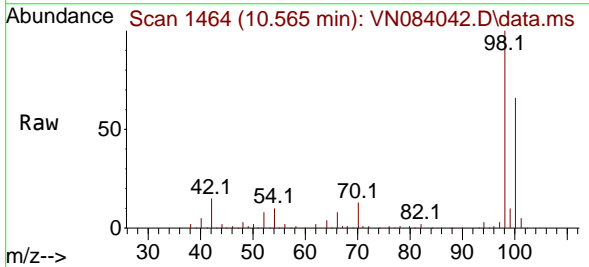


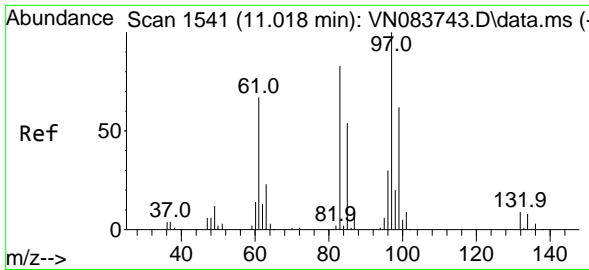
Tgt Ion: 98 Resp: 325275
 Ion Ratio Lower Upper
 98 100
 100 64.9 52.0 78.0



#51
 4-Methyl-2-Pentanone
 Concen: 0.709 ug/l
 RT: 10.565 min Scan# 1464
 Delta R.T. 0.123 min
 Lab File: VN084042.D
 Acq: 19 Sep 2024 18:28

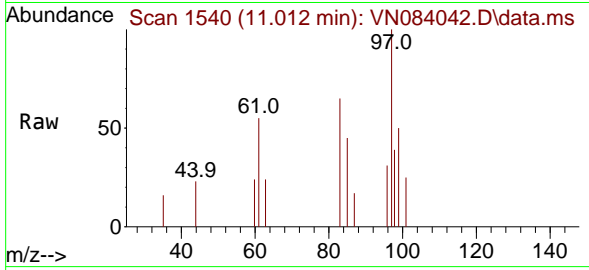
Tgt Ion: 43 Resp: 1633
 Ion Ratio Lower Upper
 43 100
 58 169.7 31.6 47.4#





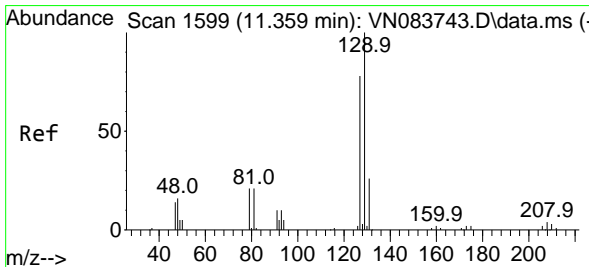
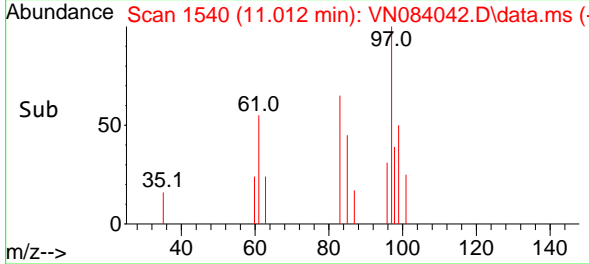
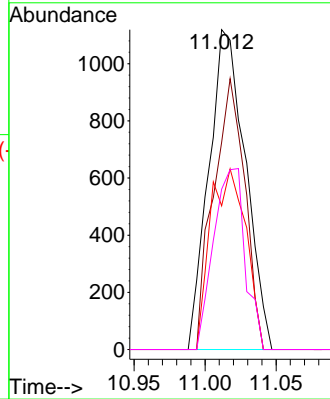
#55
 1,1,2-Trichloroethane
 Concen: 1.135 ug/l
 RT: 11.012 min Scan# 11
 Delta R.T. -0.006 min
 Lab File: VN084042.D
 Acq: 19 Sep 2024 18:28

Instrument :
 MSVOA_N
 ClientSampleId :



Tgt Ion: 97 Resp: 2007

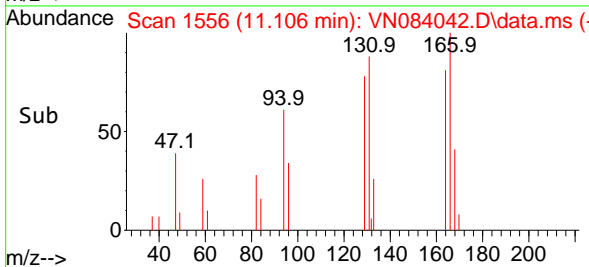
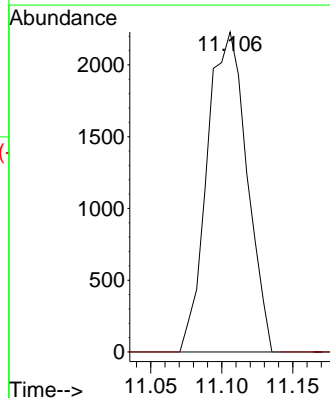
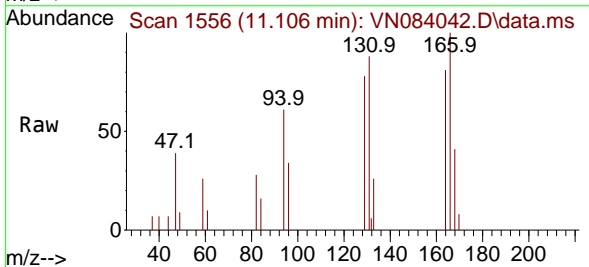
Ion	Ratio	Lower	Upper
97	100		
83	64.8	67.5	101.3#
85	45.0	44.2	66.2
99	50.1	50.1	75.1

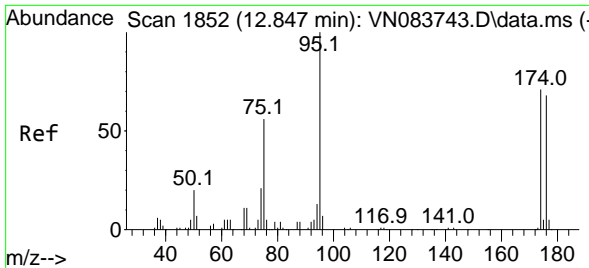


#60
 Dibromochloromethane
 Concen: 2.195 ug/l
 RT: 11.106 min Scan# 1556
 Delta R.T. -0.253 min
 Lab File: VN084042.D
 Acq: 19 Sep 2024 18:28

Tgt Ion: 129 Resp: 4344

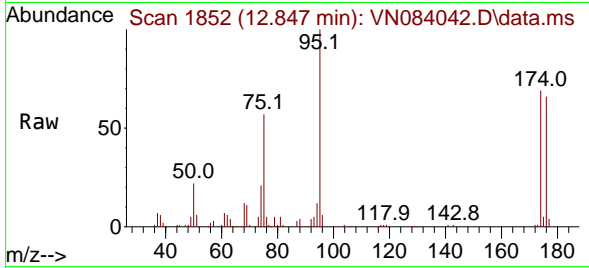
Ion	Ratio	Lower	Upper
129	100		
127	0.0	39.0	116.9#





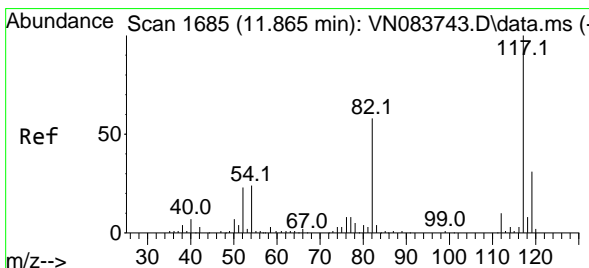
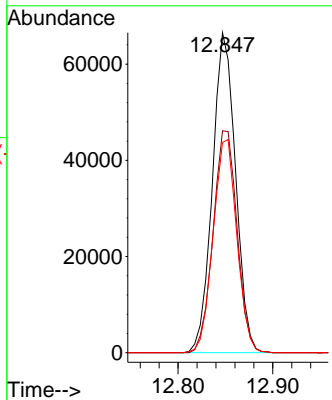
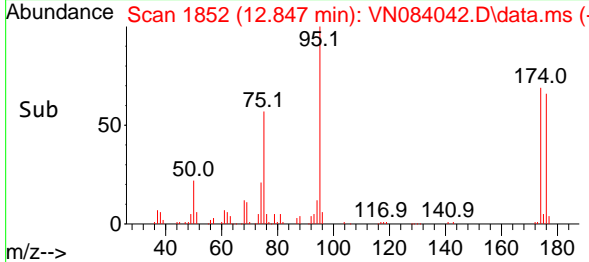
#62
 4-Bromofluorobenzene
 Concen: 46.304 ug/l
 RT: 12.847 min Scan# 1852
 Delta R.T. -0.000 min
 Lab File: VN084042.D
 Acq: 19 Sep 2024 18:28

Instrument : MSVOA_N
 ClientSampleId :

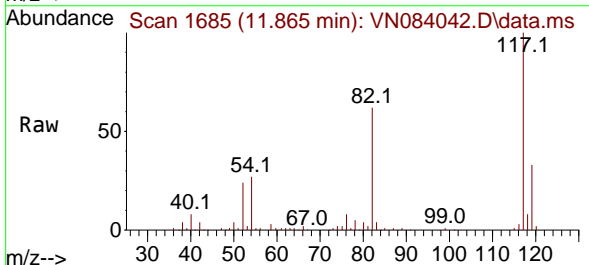


Tgt Ion: 95 Resp: 112880

Ion	Ratio	Lower	Upper
95	100		
174	71.9	0.0	139.8
176	68.4	0.0	131.4

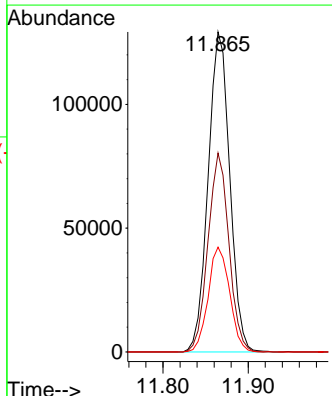
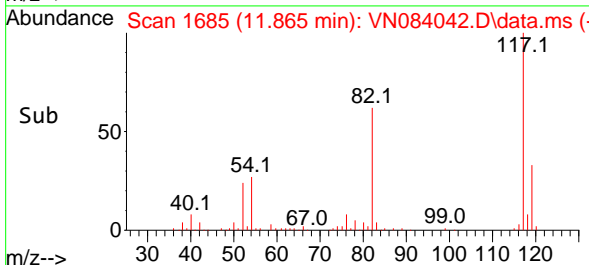


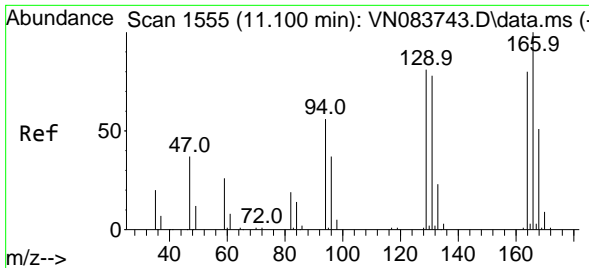
#63
 Chlorobenzene-d5
 Concen: 50.000 ug/l
 RT: 11.865 min Scan# 1685
 Delta R.T. -0.000 min
 Lab File: VN084042.D
 Acq: 19 Sep 2024 18:28



Tgt Ion: 117 Resp: 227483

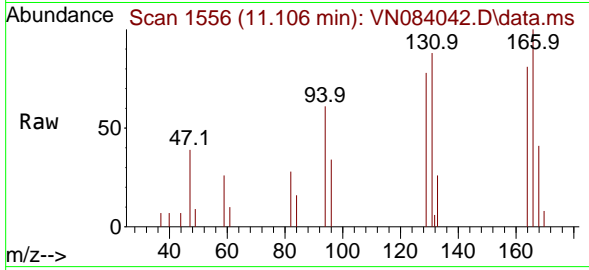
Ion	Ratio	Lower	Upper
117	100		
82	62.2	47.4	71.0
119	32.8	26.3	39.5



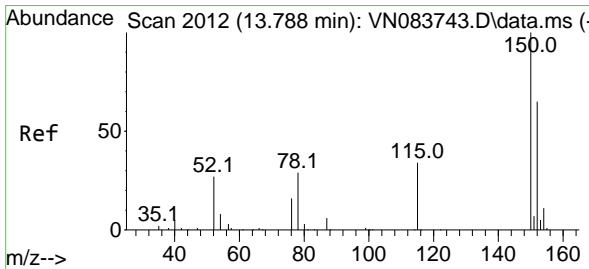
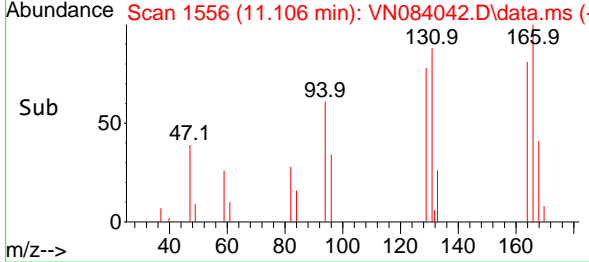
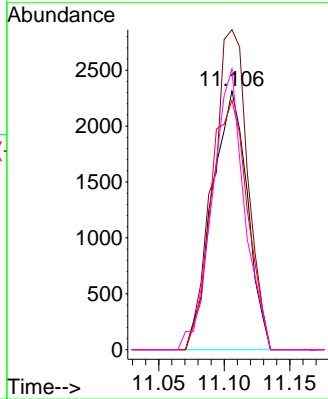


#64
 Tetrachloroethene
 Concen: 2.846 ug/l
 RT: 11.106 min Scan# 11
 Delta R.T. 0.006 min
 Lab File: VN084042.D
 Acq: 19 Sep 2024 18:28

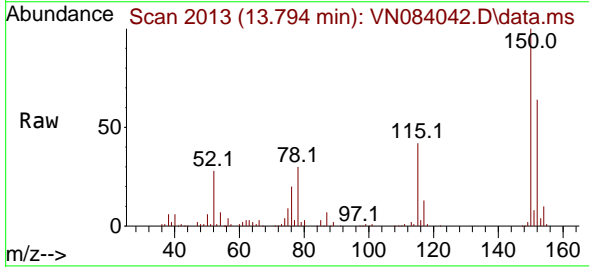
Instrument :
 MSVOA_N
 ClientSampleId :



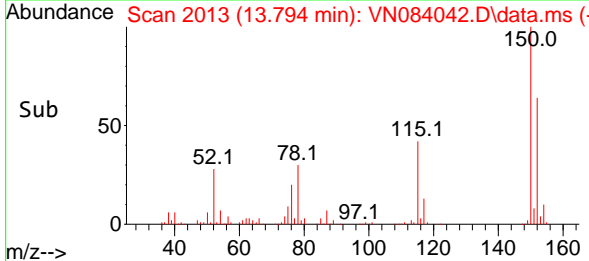
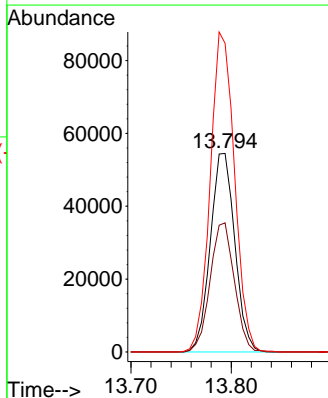
Tgt Ion:164 Resp: 4305
 Ion Ratio Lower Upper
 164 100
 166 123.8 103.7 155.5
 129 96.4 79.9 119.9
 131 108.5 78.4 117.6

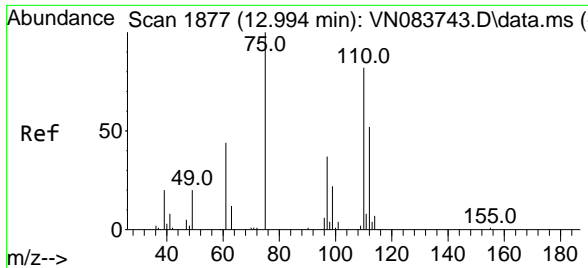


#72
 1,4-Dichlorobenzene-d4
 Concen: 50.000 ug/l
 RT: 13.794 min Scan# 2013
 Delta R.T. 0.006 min
 Lab File: VN084042.D
 Acq: 19 Sep 2024 18:28



Tgt Ion:152 Resp: 92485
 Ion Ratio Lower Upper
 152 100
 115 64.3 32.2 96.6
 150 159.3 0.0 348.6

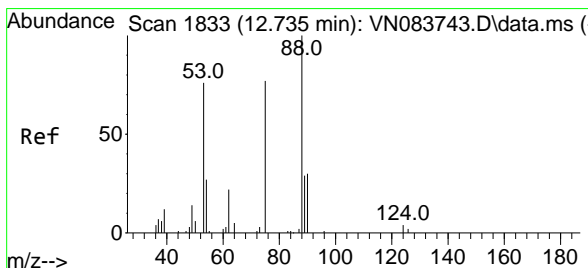
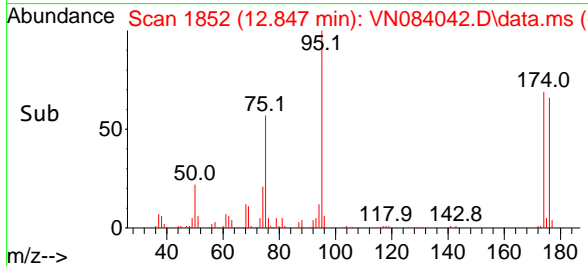
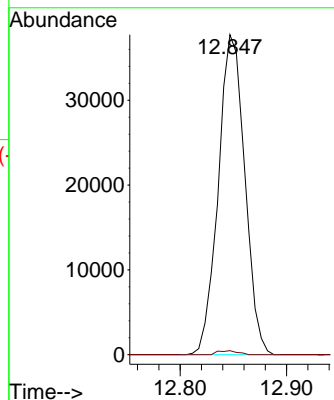
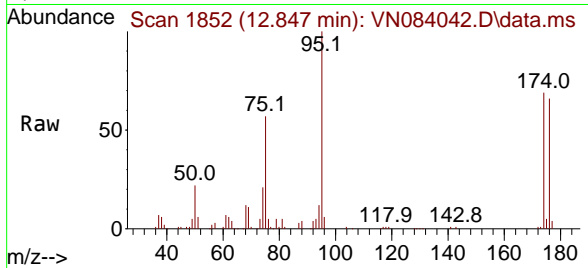




#76
 1,2,3-Trichloropropane
 Concen: 34.935 ug/l
 RT: 12.847 min Scan# 1852
 Delta R.T. -0.147 min
 Lab File: VN084042.D
 Acq: 19 Sep 2024 18:28

Instrument : MSVOA_N
 ClientSampleId :

Tgt Ion: 75 Resp: 65194
 Ion Ratio Lower Upper
 75 100
 77 0.9 95.2 285.6#



#81
 trans-1,4-Dichloro-2-butene
 Concen: 91.497 ug/l
 RT: 12.847 min Scan# 1852
 Delta R.T. 0.112 min
 Lab File: VN084042.D
 Acq: 19 Sep 2024 18:28

Tgt Ion: 75 Resp: 65194
 Ion Ratio Lower Upper
 75 100
 53 0.0 81.2 121.8#
 89 0.0 35.7 53.5#

