

Data Path : Z:\VOASRV\HPCHEM1\MSVOA_N\DATA\VN092019\
 Data File : VN058254.D
 Acq On : 20 Sep 2019 16:42
 Operator : JC/SP
 Sample : K4975-02DL 5X
 Misc : 5.00mL/MSVOA_N/WATER
 ALS Vial : 22 Sample Multiplier: 1

Instrument :
 MSVOA_N
 ClientSampleId :
 TT101D1-20190917DL

Quant Time: Sep 20 23:51:13 2019
 Quant Method : Z:\VOASRV\HPCHEM1\MSVOA_N\METHODS\82N091819W.M
 Quant Title : SW846 8260
 QLast Update : Thu Sep 19 09:27:53 2019
 Response via : Initial Calibration

Internal Standards	R.T.	QIon	Response	Conc	Units	Dev(Min)
1) Pentafluorobenzene	7.65	168	501298	50.00	ug/l	0.00
34) 1,4-Difluorobenzene	8.57	114	812666	50.00	ug/l	0.00
63) Chlorobenzene-d5	11.41	117	698461	50.00	ug/l	0.00
72) 1,4-Dichlorobenzene-d4	13.35	152	288183	50.00	ug/l	0.00

System Monitoring Compounds

33) 1,2-Dichloroethane-d4	8.01	65	366949	52.56	ug/l	0.00
Spiked Amount	50.000		Recovery	=	105.12%	
35) Dibromofluoromethane	7.57	113	249141	50.43	ug/l	0.00
Spiked Amount	50.000		Recovery	=	100.86%	
50) Toluene-d8	10.08	98	1025762	53.29	ug/l	0.00
Spiked Amount	50.000		Recovery	=	106.58%	
62) 4-Bromofluorobenzene	12.41	95	329925	46.14	ug/l	0.00
Spiked Amount	50.000		Recovery	=	92.28%	

Target Compounds

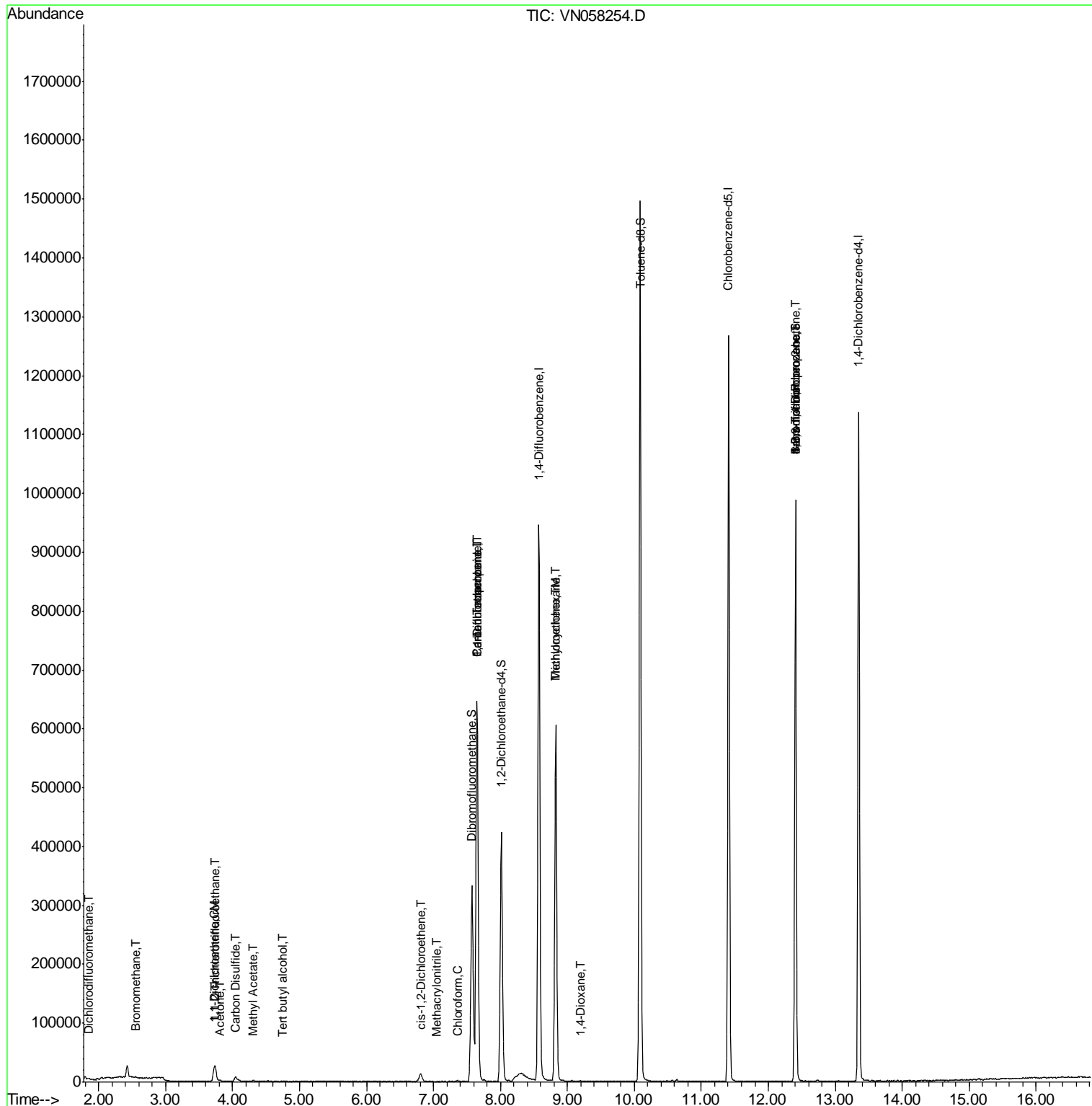
					Qvalue
2) Dichlorodifluoromethane	1.84	85	889	0.216 ug/l	88
3) Chloromethane	2.04	50	565	Below Cal	# 42
5) Bromomethane	2.55	94	381	0.927 ug/l	85
6) Chloroethane	2.63	64	30	Below Cal	# 44
9) 1,1,2-Trichlorotrifluoroet	3.74	101	13551	3.344 ug/l	97
11) Tert butyl alcohol	4.75	59	533	0.642 ug/l	# 71
12) 1,1-Dichloroethene	3.72	96	4545	1.130 ug/l	97
16) Acetone	3.80	43	2041	0.861 ug/l	95
17) Carbon Disulfide	4.03	76	301	0.340 ug/l	# 74
18) Methyl Acetate	4.32	43	2167	0.347 ug/l	# 56
20) Methylene Chloride	4.53	84	390	Below Cal	# 78
27) cis-1,2-Dichloroethene	6.81	96	2212	0.435 ug/l	97
30) Chloroform	7.35	83	2420	0.250 ug/l	96
31) Cyclohexane	7.65	56	12318	Below Cal	# 1
36) 1,1-Dichloropropene	7.65	75	43383	7.403 ug/l	# 51
38) Carbon Tetrachloride	7.65	117	51655	8.768 ug/l	# 15
39) Methylcyclohexane	8.82	83	3001	0.600 ug/l	# 1
41) Methacrylonitrile	7.05	41	29	0.920 ug/l	# 100
44) Trichloroethene	8.83	130	208671	47.638 ug/l	98
49) 1,4-Dioxane	9.20	88	68	0.803 ug/l	# 1
71) Bromoform	12.40	173	1399	3.988 ug/l	# 1
76) 1,2,3-Trichloropropane	12.41	75	182324	35.351 ug/l	# 100
81) trans-1,4-Dichloro-2-buten	12.41	75	182324	98.831 ug/l	# 5

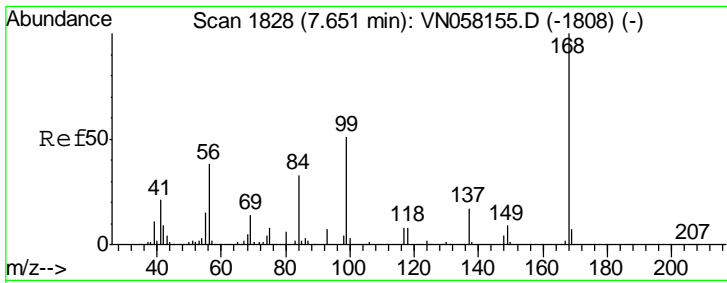
(#) = qualifier out of range (m) = manual integration (+) = signals summed

Data Path : Z:\VOASRV\HPCHEM1\MSVOA_N\DATA\VN092019\
 Data File : VN058254.D
 Acq On : 20 Sep 2019 16:42
 Operator : JC/SP
 Sample : K4975-02DL 5X
 Misc : 5.00mL/MSVOA_N/WATER
 ALS Vial : 22 Sample Multiplier: 1

Instrument :
 MSVOA_N
 ClientSampleId :
 TT101D1-20190917DL

Quant Time: Sep 20 23:51:13 2019
 Quant Method : Z:\VOASRV\HPCHEM1\MSVOA_N\METHODS\82N091819W.M
 Quant Title : SW846 8260
 QLast Update : Thu Sep 19 09:27:53 2019
 Response via : Initial Calibration

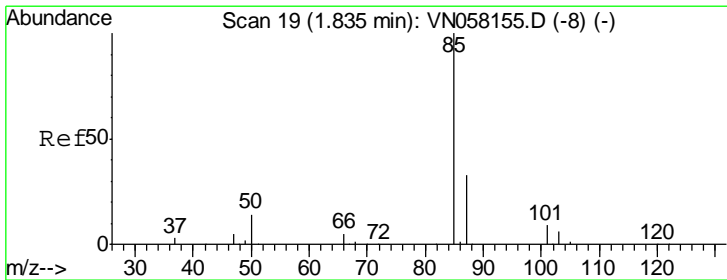
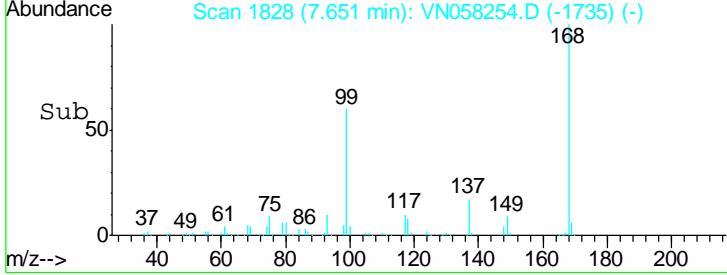
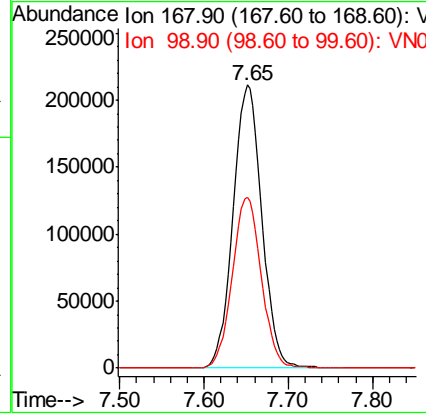
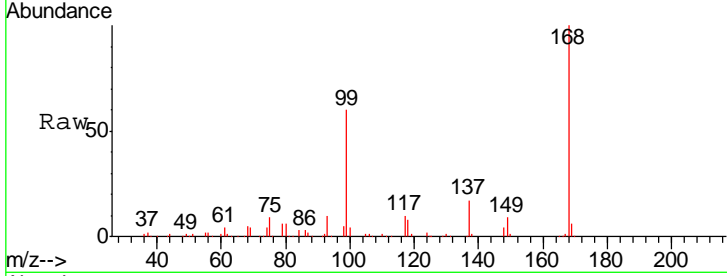




#1
 Pentafluorobenzene
 Concen: 50.000 ug/l
 RT: 7.65 min Scan# 1828
 Delta R.T. -0.00 min
 Lab File: VN058254.D
 Acq: 20 Sep 2019 16:42

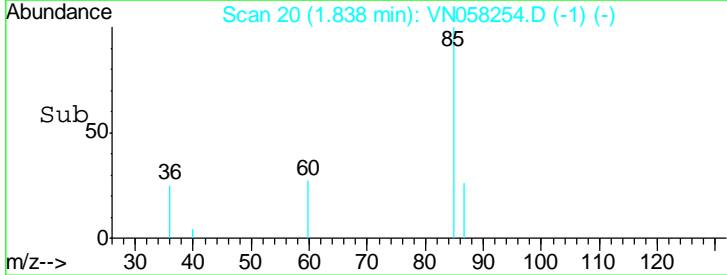
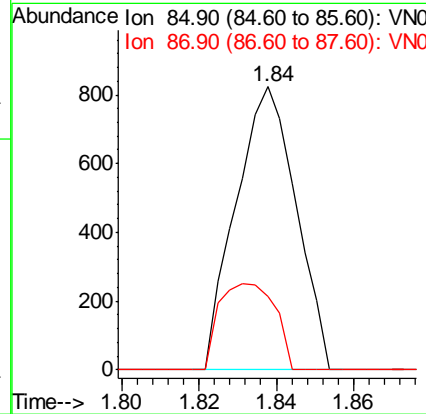
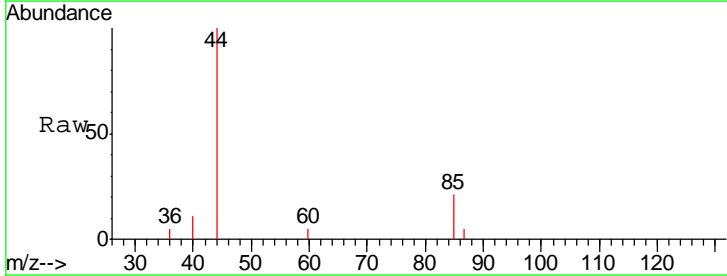
Instrument :
 MSVOA_N
 ClientSampleID :
 TT101D1-20190917DL

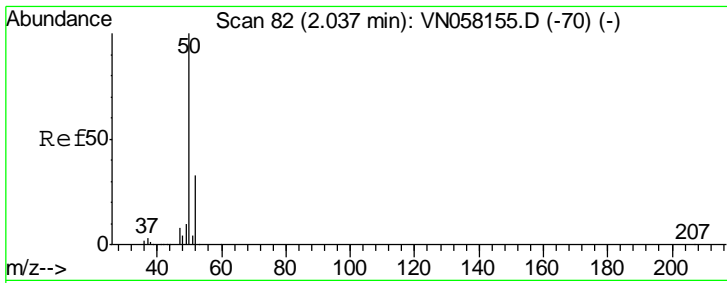
Tgt Ion: 168 Resp: 501298
 Ion Ratio Lower Upper
 168 100
 99 60.5 47.4 71.2



#2
 Dichlorodifluoromethane
 Concen: 0.216 ug/l
 RT: 1.84 min Scan# 20
 Delta R.T. 0.00 min
 Lab File: VN058254.D
 Acq: 20 Sep 2019 16:42

Tgt Ion: 85 Resp: 889
 Ion Ratio Lower Upper
 85 100
 87 25.8 16.3 48.9

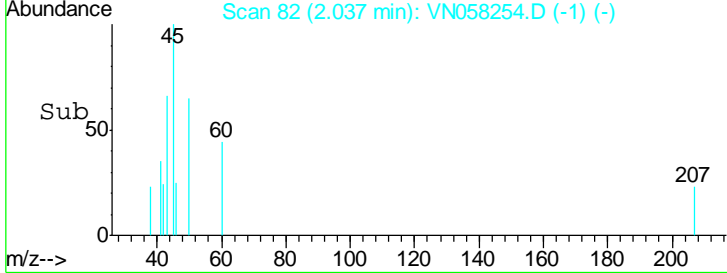
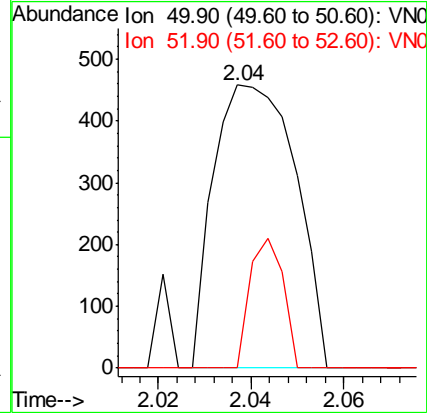
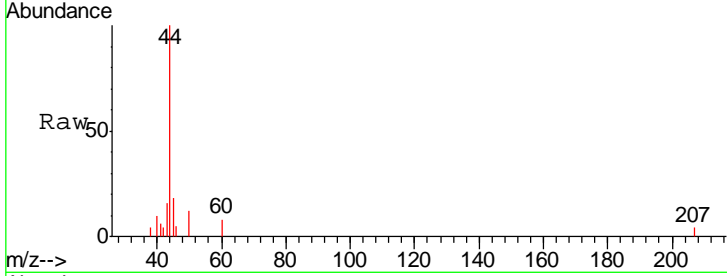




#3
 Chloromethane
 Concen: Below Cal
 RT: 2.04 min Scan# 82
 Delta R.T. 0.00 min
 Lab File: VN058254.D
 Acq: 20 Sep 2019 16:42

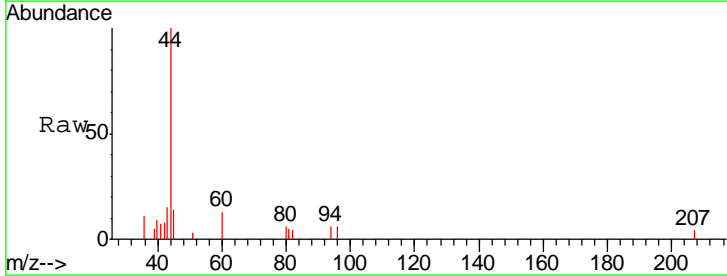
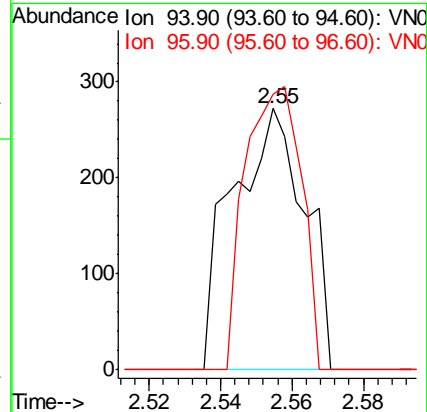
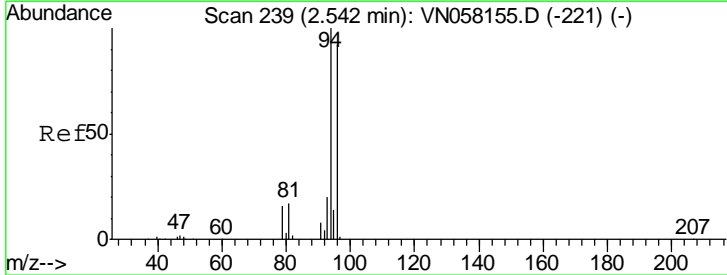
Instrument :
 MSVOA_N
ClientSampled :
 TT101D1-20190917DL

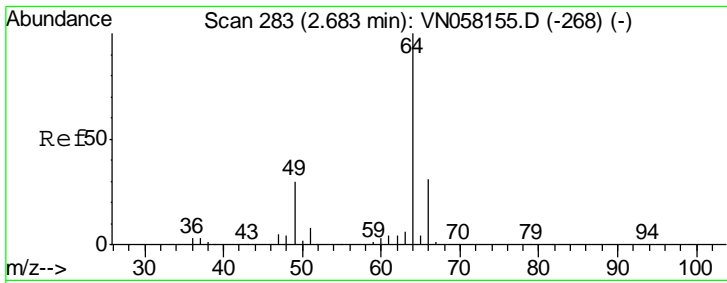
Tgt Ion: 50 Resp: 565
 Ion Ratio Lower Upper
 50 100
 52 0.0 26.3 39.5#



#5
 Bromomethane
 Concen: 0.927 ug/l
 RT: 2.55 min Scan# 243
 Delta R.T. 0.01 min
 Lab File: VN058254.D
 Acq: 20 Sep 2019 16:42

Tgt Ion: 94 Resp: 381
 Ion Ratio Lower Upper
 94 100
 96 105.5 73.3 109.9

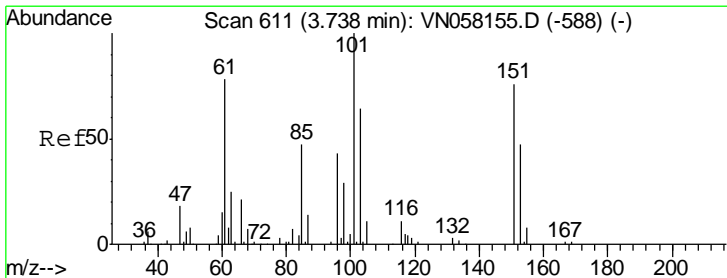
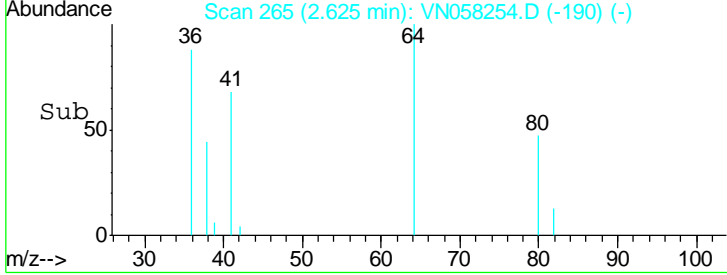
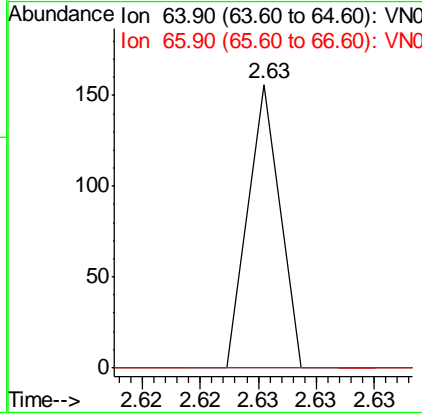
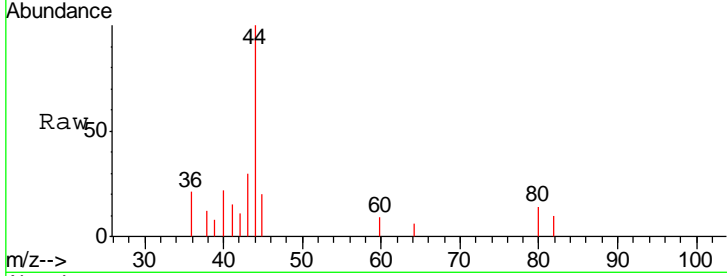




#6
 Chloroethane
 Concen: Below Cal
 RT: 2.63 min Scan# 265
 Delta R.T. -0.06 min
 Lab File: VN058254.D
 Acq: 20 Sep 2019 16:42

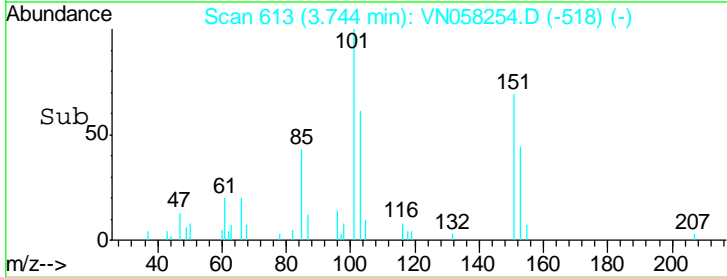
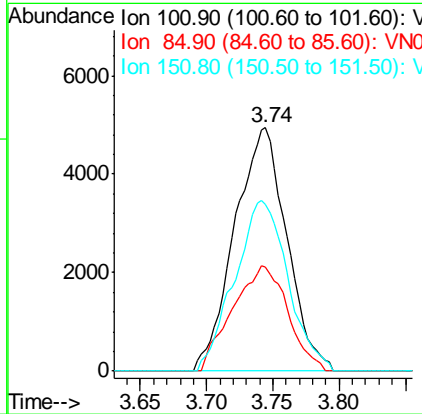
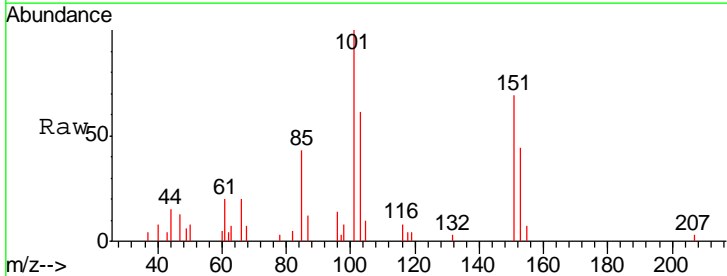
Instrument : MSVOA_N
 ClientSampleID : TT101D1-20190917DL

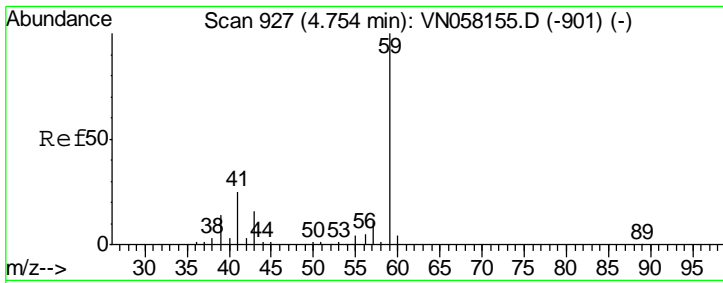
Tgt Ion	Resp	Lower	Upper
64	100		
66	0.0	24.6	37.0#



#9
 1,1,2-Trichlorotrifluoroethane
 Concen: 3.344 ug/l
 RT: 3.74 min Scan# 613
 Delta R.T. 0.01 min
 Lab File: VN058254.D
 Acq: 20 Sep 2019 16:42

Tgt Ion	Resp	Lower	Upper
101	100		
85	45.7	37.3	55.9
151	71.4	59.6	89.4

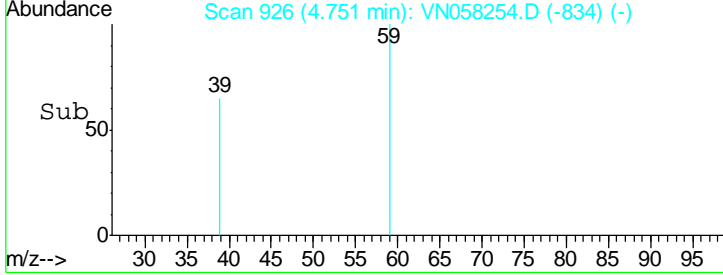
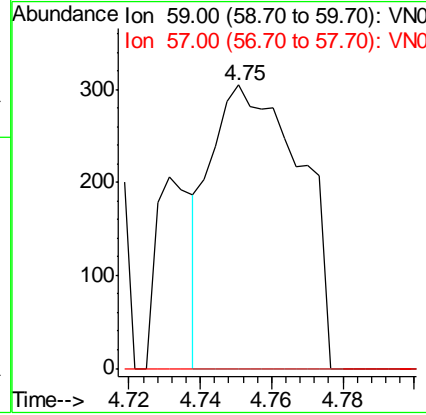
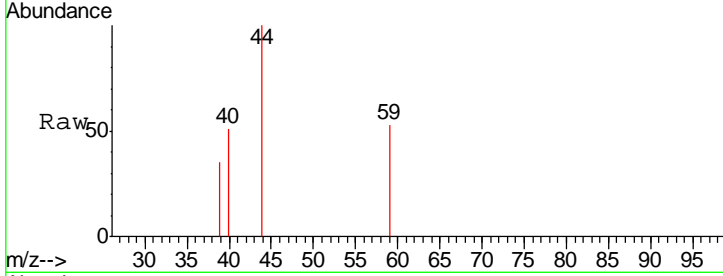




#11
 Tert butyl alcohol
 Concen: 0.642 ug/l
 RT: 4.75 min Scan# 926
 Delta R.T. -0.00 min
 Lab File: VN058254.D
 Acq: 20 Sep 2019 16:42

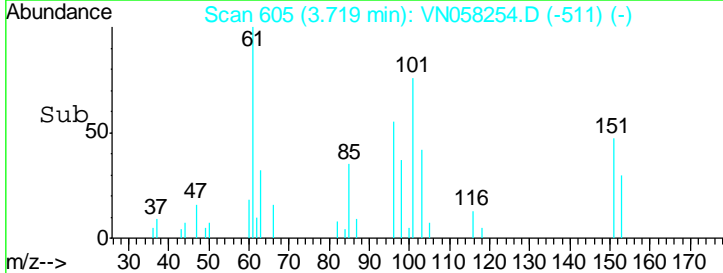
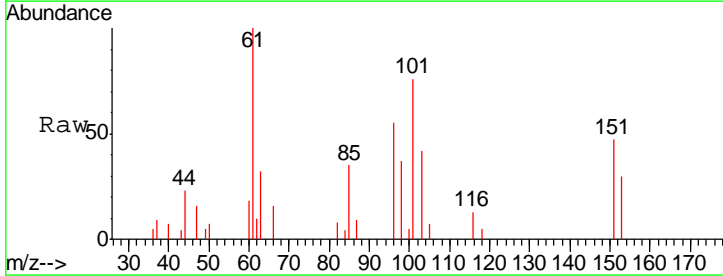
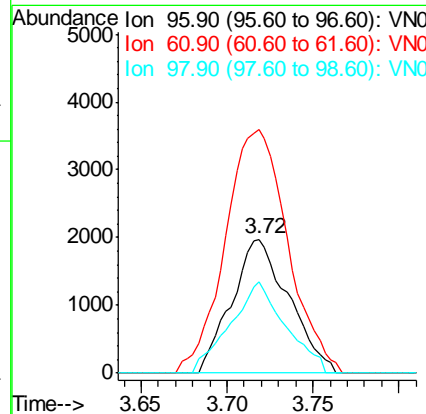
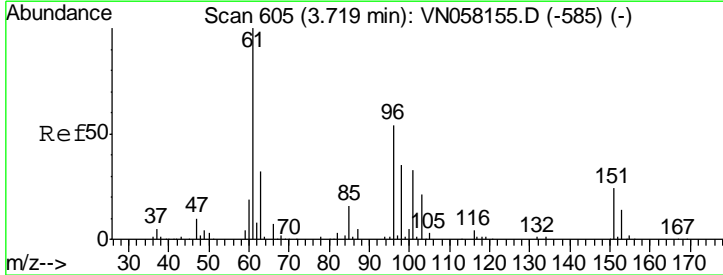
Instrument :
 MSVOA_N
 ClientSampled :
 TT101D1-20190917DL

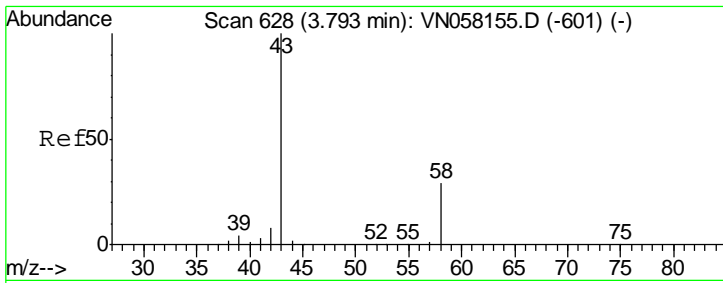
Tgt Ion	Resp	Lower	Upper
59	100		
57	0.0	8.6	13.0#



#12
 1,1-Dichloroethene
 Concen: 1.130 ug/l
 RT: 3.72 min Scan# 605
 Delta R.T. 0.00 min
 Lab File: VN058254.D
 Acq: 20 Sep 2019 16:42

Tgt Ion	Resp	Lower	Upper
96	100		
61	181.8	149.5	224.3
98	67.9	52.4	78.6

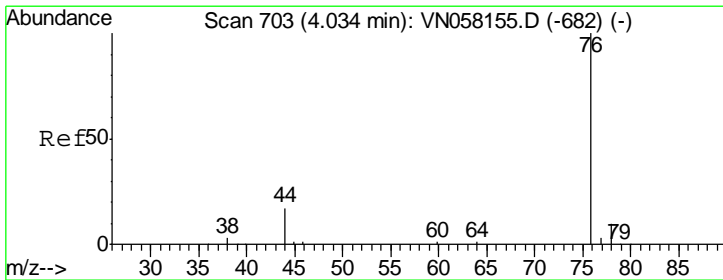
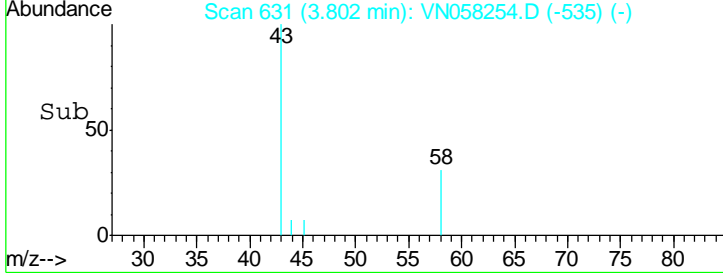
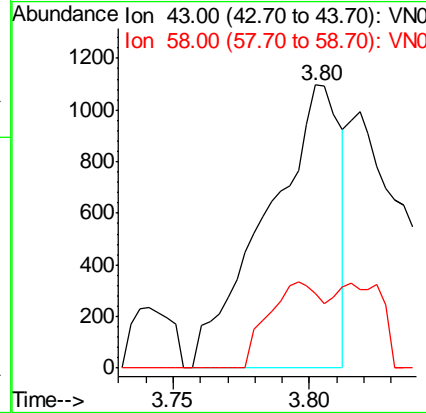
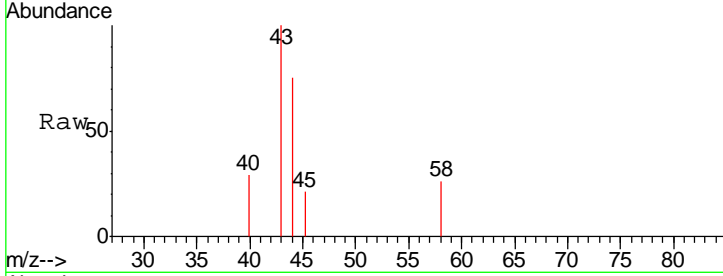




#16
 Acetone
 Concen: 0.861 ug/l
 RT: 3.80 min Scan# 631
 Delta R.T. 0.01 min
 Lab File: VN058254.D
 Acq: 20 Sep 2019 16:42

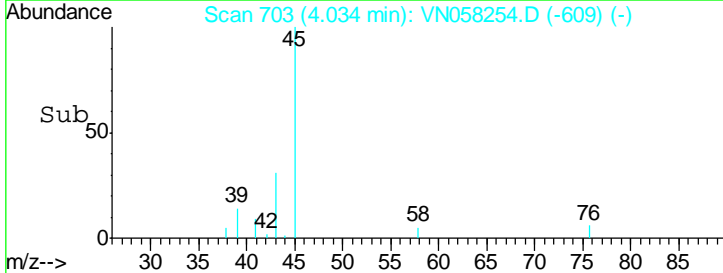
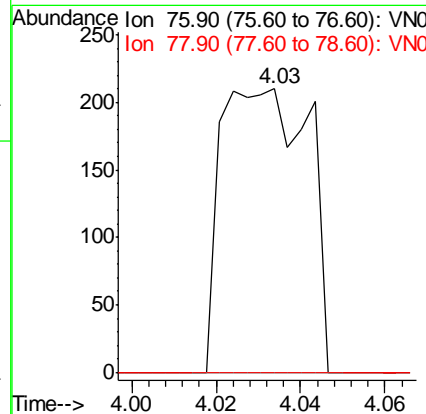
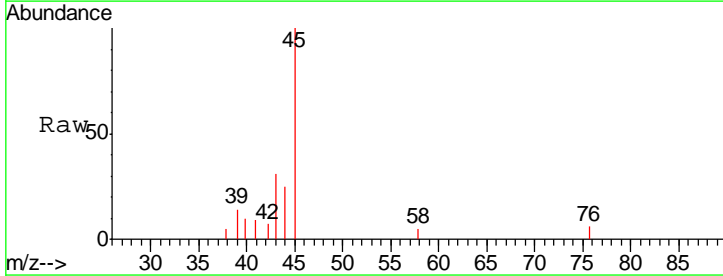
Instrument : MSVOA_N
 ClientSampled : TT101D1-20190917DL

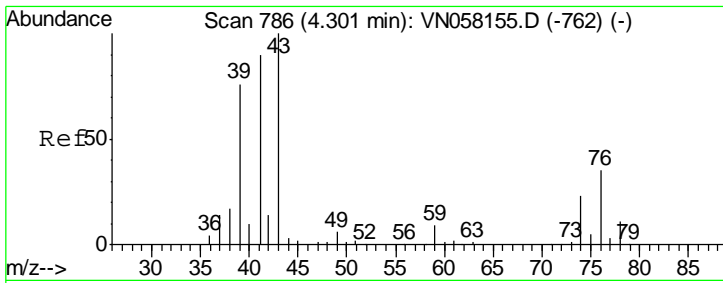
Tgt Ion	Resp	Lower	Upper
43	100		
58	26.4	23.4	35.2



#17
 Carbon Disulfide
 Concen: 0.340 ug/l
 RT: 4.03 min Scan# 703
 Delta R.T. 0.00 min
 Lab File: VN058254.D
 Acq: 20 Sep 2019 16:42

Tgt Ion	Resp	Lower	Upper
76	100		
78	0.0	7.7	11.5#

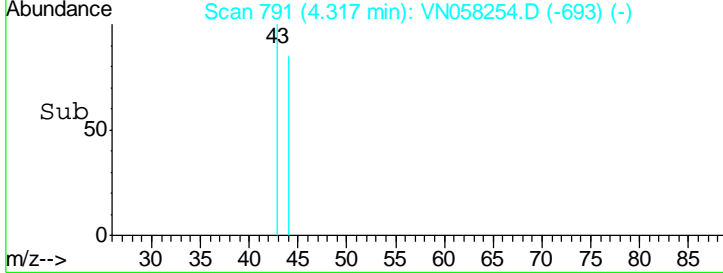
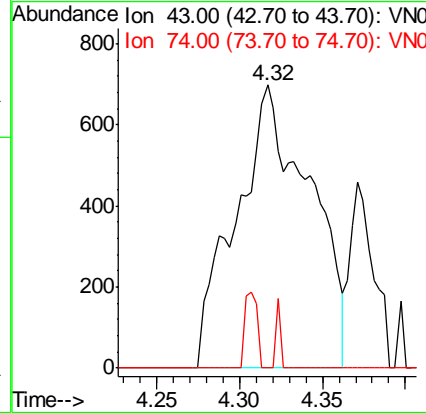
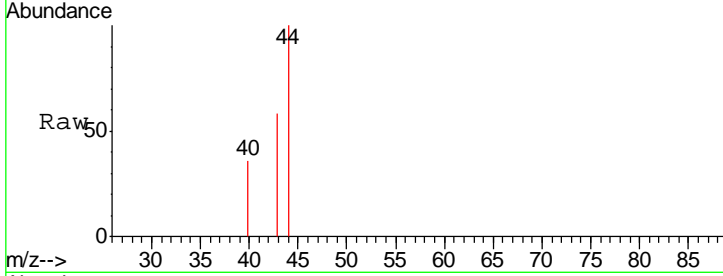




#18
 Methyl Acetate
 Concen: 0.347 ug/l
 RT: 4.32 min Scan# 791
 Delta R.T. 0.02 min
 Lab File: VN058254.D
 Acq: 20 Sep 2019 16:42

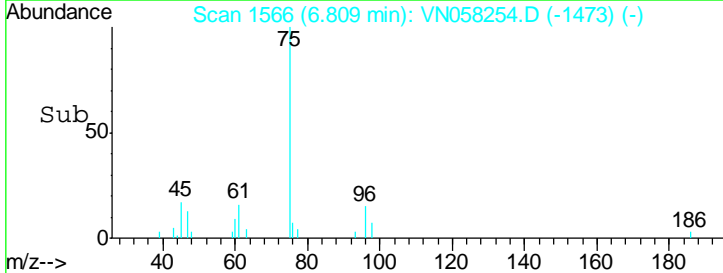
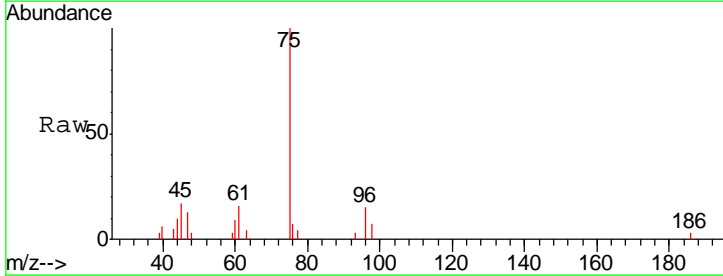
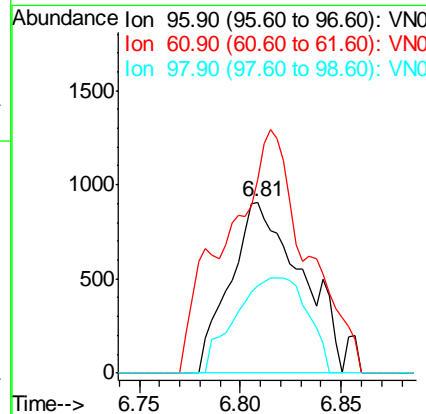
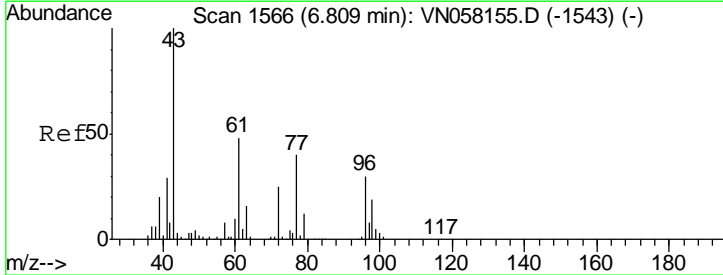
Instrument :
 MSVOA_N
 ClientSampleId :
 TT101D1-20190917DL

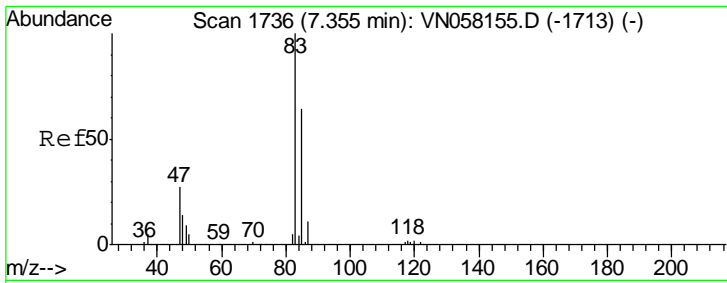
Tgt Ion: 43 Resp: 2167
 Ion Ratio Lower Upper
 43 100
 74 1.5 18.0 27.0#



#27
 cis-1,2-Dichloroethene
 Concen: 0.435 ug/l
 RT: 6.81 min Scan# 1566
 Delta R.T. -0.00 min
 Lab File: VN058254.D
 Acq: 20 Sep 2019 16:42

Tgt Ion: 96 Resp: 2212
 Ion Ratio Lower Upper
 96 100
 61 161.1 0.0 319.0
 98 56.5 0.0 126.6

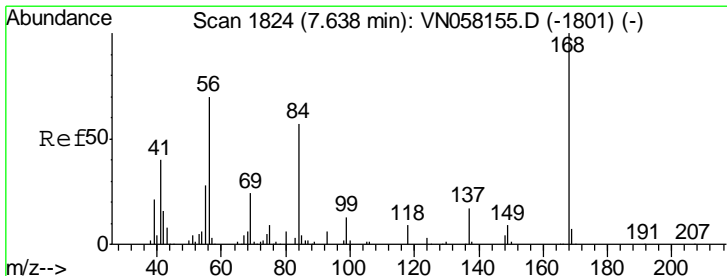
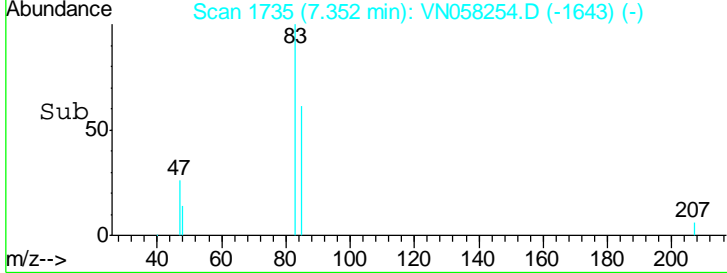
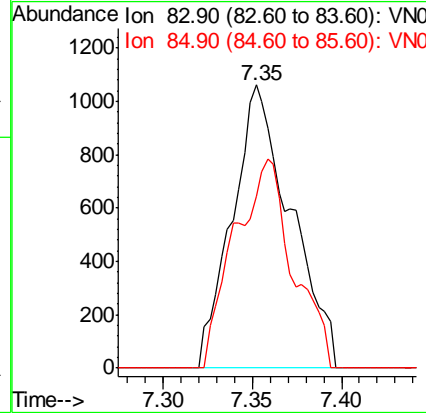
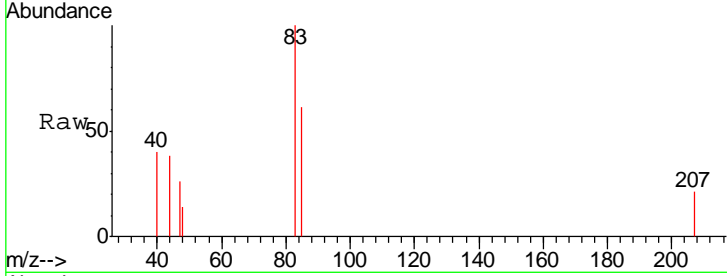




#30
 Chloroform
 Concen: 0.250 ug/l
 RT: 7.35 min Scan# 1735
 Delta R.T. -0.00 min
 Lab File: VN058254.D
 Acq: 20 Sep 2019 16:42

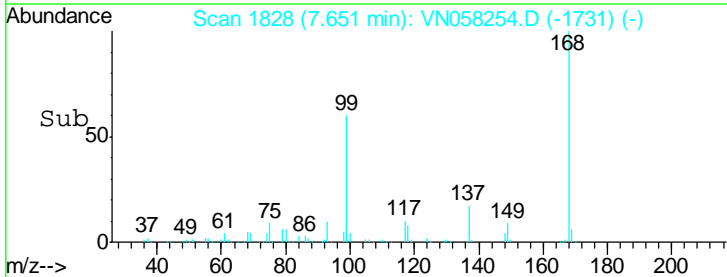
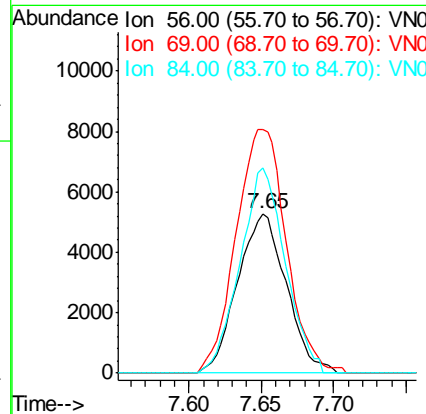
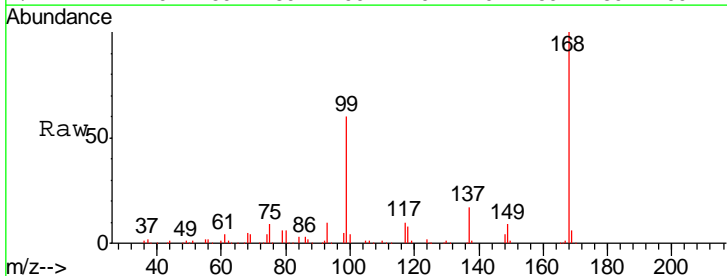
Instrument : MSVOA_N
 ClientSampled : TT101D1-20190917DL

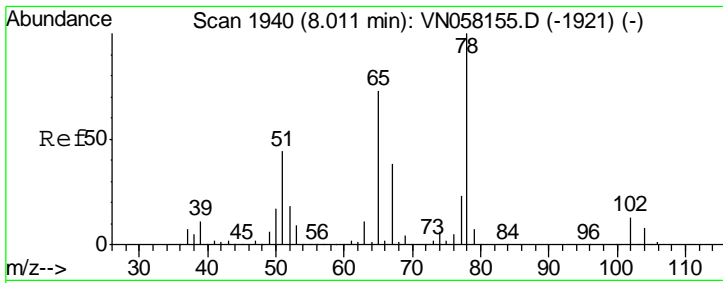
Tgt Ion	Resp	Lower	Upper
83	100		
85	60.8	51.4	77.2



#31
 Cyclohexane
 Concen: Below Cal
 RT: 7.65 min Scan# 1828
 Delta R.T. 0.01 min
 Lab File: VN058254.D
 Acq: 20 Sep 2019 16:42

Tgt Ion	Resp	Lower	Upper
56	100		
69	152.8	27.3	40.9#
84	129.0	65.0	97.4#

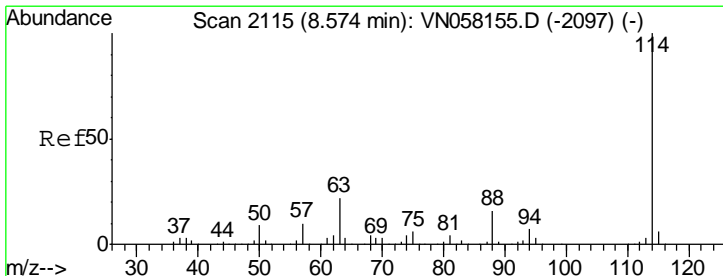
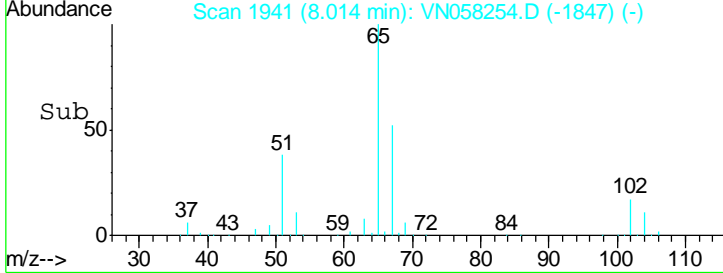
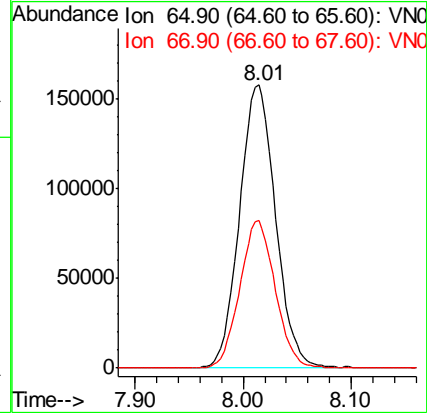
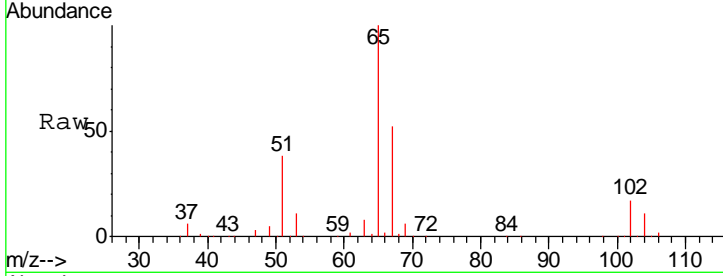




#33
 1,2-Dichloroethane-d4
 Concen: 52.556 ug/l
 RT: 8.01 min Scan# 1941
 Delta R.T. 0.00 min
 Lab File: VN058254.D
 Acq: 20 Sep 2019 16:42

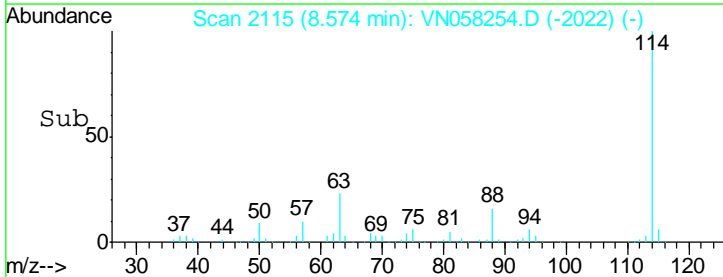
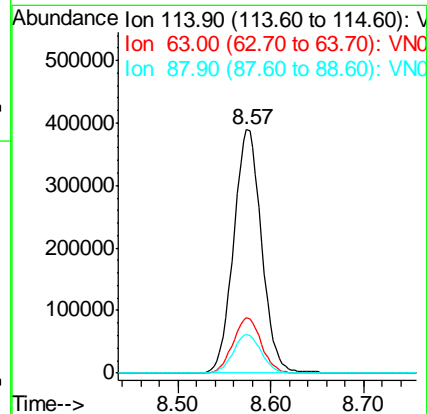
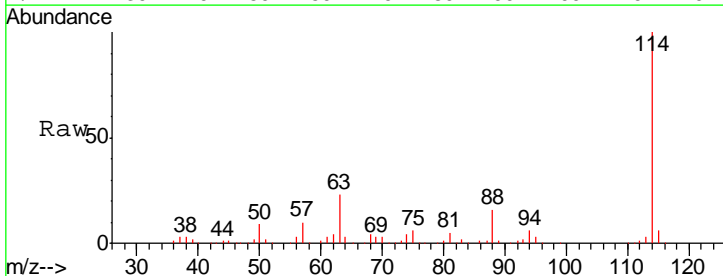
Instrument :
 MSVOA_N
ClientSampled :
 TT101D1-20190917DL

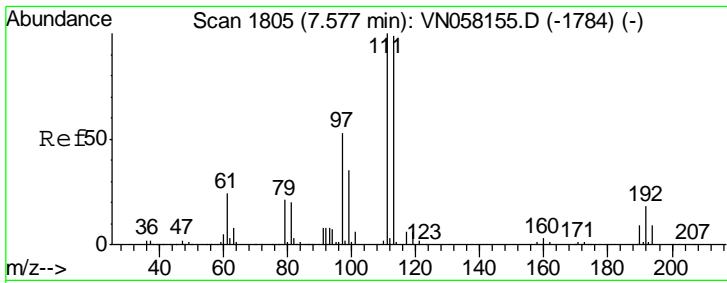
Tgt Ion: 65 Resp: 366949
 Ion Ratio Lower Upper
 65 100
 67 51.2 0.0 103.4



#34
 1,4-Difluorobenzene
 Concen: 50.000 ug/l
 RT: 8.57 min Scan# 2115
 Delta R.T. -0.00 min
 Lab File: VN058254.D
 Acq: 20 Sep 2019 16:42

Tgt Ion: 114 Resp: 812666
 Ion Ratio Lower Upper
 114 100
 63 22.6 0.0 44.2
 88 16.1 0.0 31.6

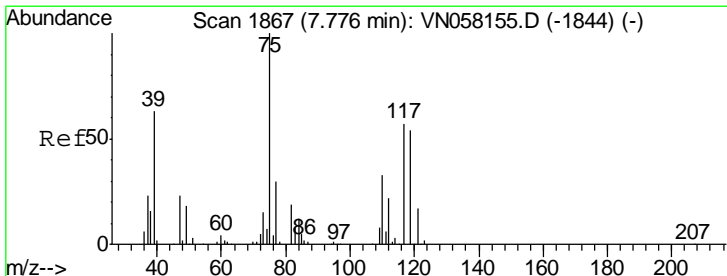
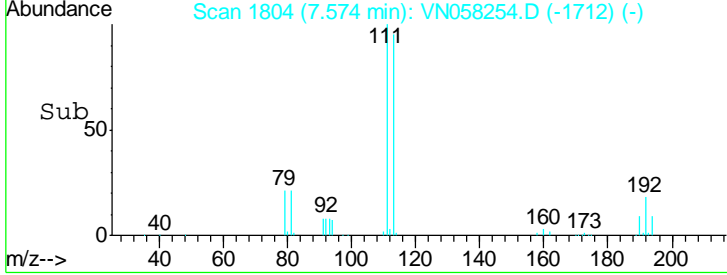
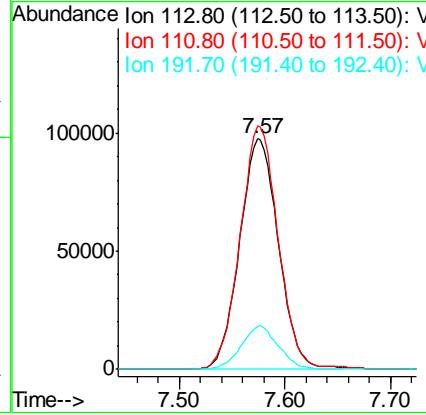
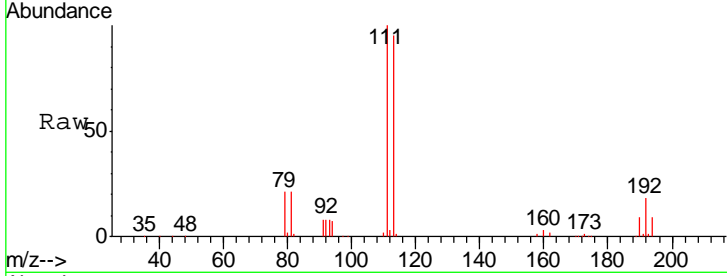




#35
 Dibromofluoromethane
 Concen: 50.430 ug/l
 RT: 7.57 min Scan# 1804
 Delta R.T. -0.00 min
 Lab File: VN058254.D
 Acq: 20 Sep 2019 16:42

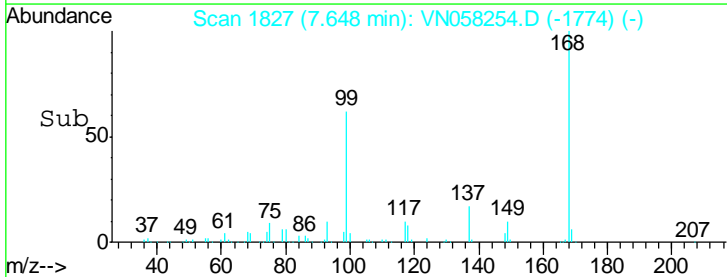
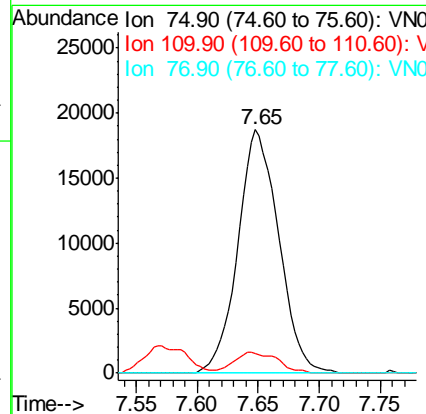
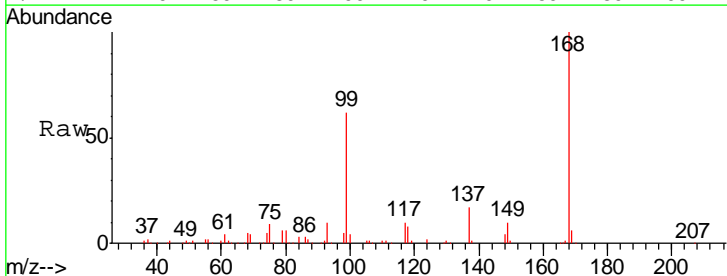
Instrument :
 MSVOA_N
 ClientSampled :
 TT101D1-20190917DL

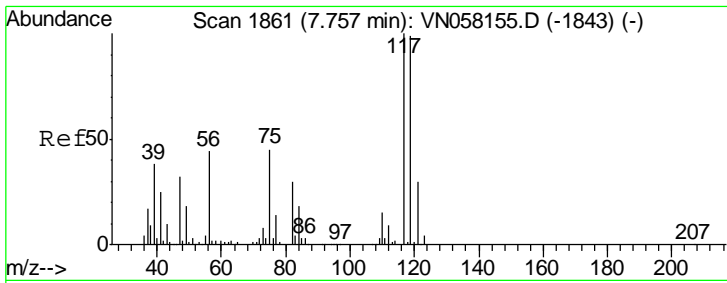
Tgt Ion	Resp	Lower	Upper
113	249141		
111	104.0	81.8	122.6
192	18.2	14.5	21.7



#36
 1,1-Dichloropropene
 Concen: 7.403 ug/l
 RT: 7.65 min Scan# 1827
 Delta R.T. -0.13 min
 Lab File: VN058254.D
 Acq: 20 Sep 2019 16:42

Tgt Ion	Resp	Lower	Upper
75	43383		
75	100		
110	9.2	16.6	49.7#
77	0.0	24.3	36.5#

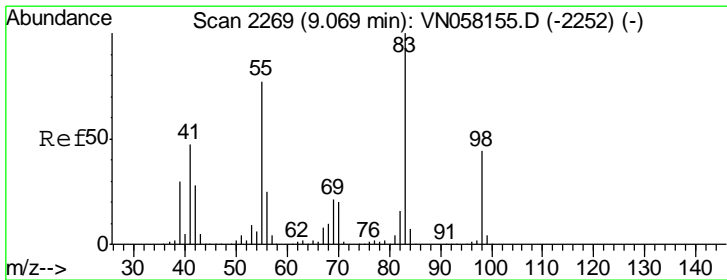
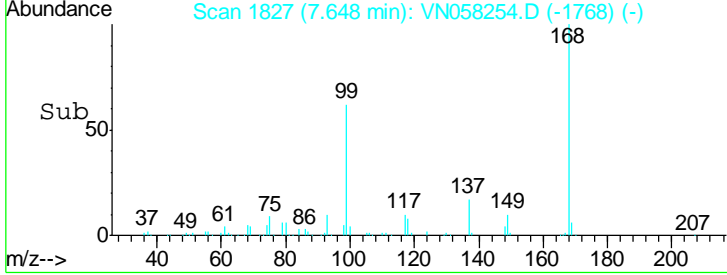
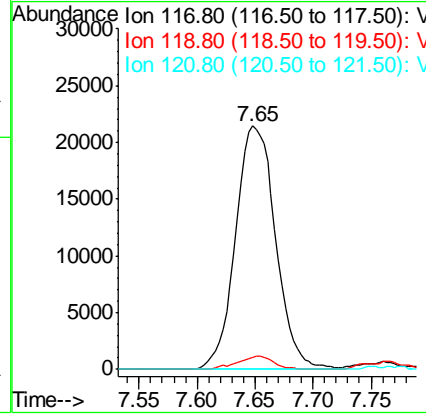
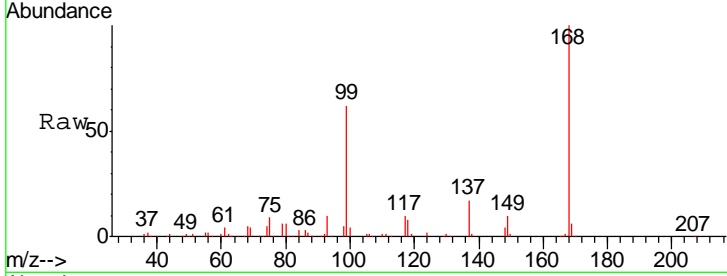




#38
 Carbon Tetrachloride
 Concen: 8.768 ug/l
 RT: 7.65 min Scan# 1827
 Delta R.T. -0.11 min
 Lab File: VN058254.D
 Acq: 20 Sep 2019 16:42

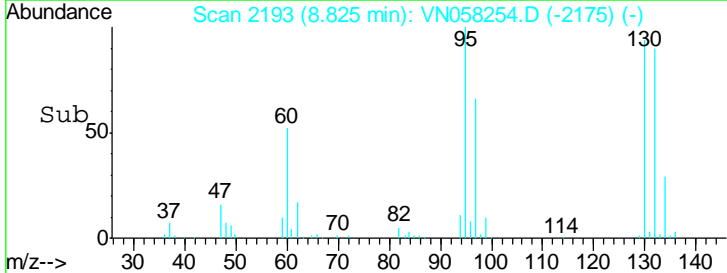
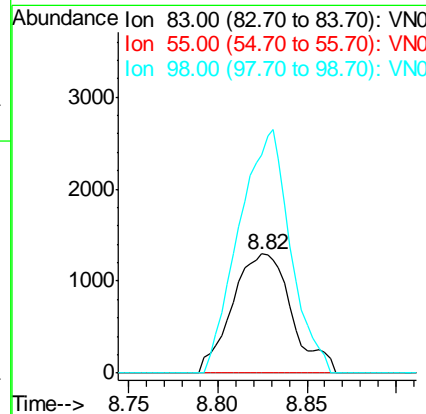
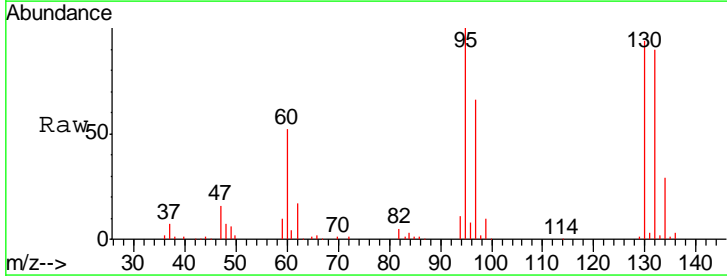
Instrument :
 MSVOA_N
 ClientSampled :
 TT101D1-20190917DL

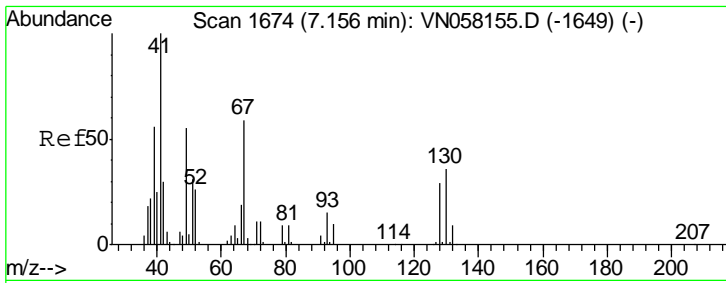
Tgt Ion	Resp	Lower	Upper
117	100		
119	5.2	78.6	117.8#
121	0.0	24.1	36.1#



#39
 Methylcyclohexane
 Concen: 0.600 ug/l
 RT: 8.82 min Scan# 2193
 Delta R.T. -0.24 min
 Lab File: VN058254.D
 Acq: 20 Sep 2019 16:42

Tgt Ion	Resp	Lower	Upper
83	100		
55	0.0	61.9	92.9#
98	183.3	35.4	53.2#

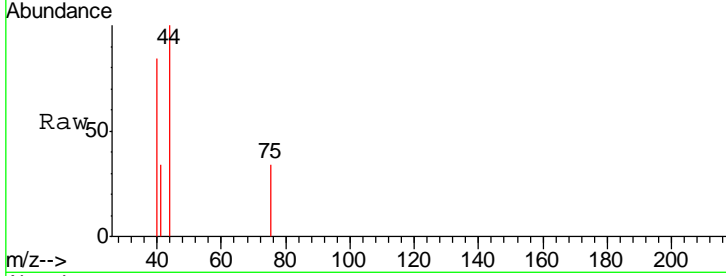




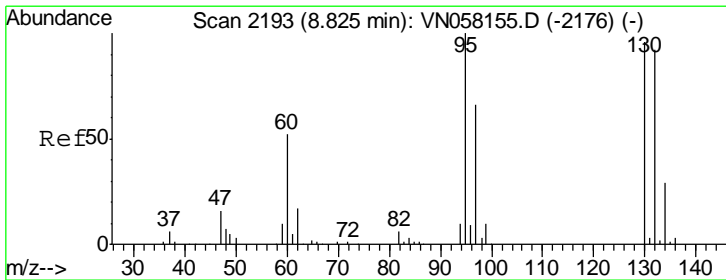
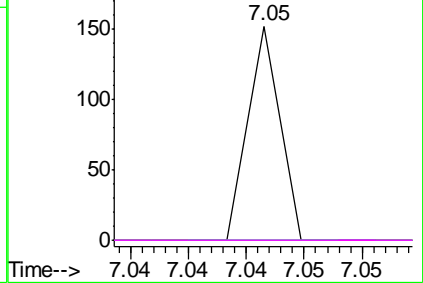
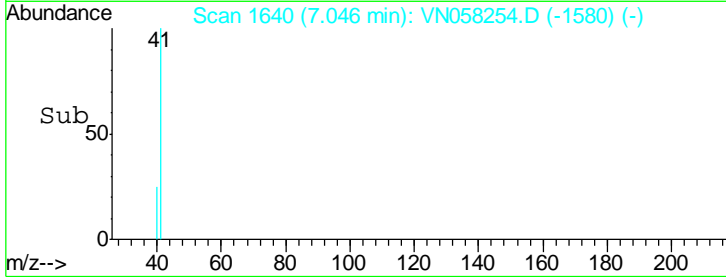
#41
 Methacrylonitrile
 Concen: 0.920 ug/l
 RT: 7.05 min Scan# 1640
 Delta R.T. -0.11 min
 Lab File: VN058254.D
 Acq: 20 Sep 2019 16:42

Instrument : MSVOA_N
 ClientSampled : TT101D1-20190917DL

Tgt Ion	Resp	Lower	Upper
41	100		
39	0.0	0.0	0.0
67	0.0	0.0	0.0
52	0.0	0.0	0.0

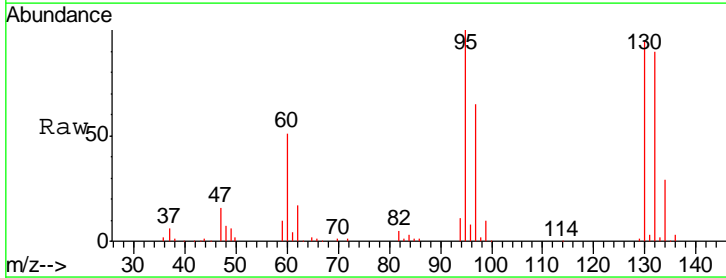


Abundance Ion 41.00 (40.70 to 41.70): VNC
 Ion 39.00 (38.70 to 39.70): VNC
 Ion 67.00 (66.70 to 67.70): VNC
 Ion 52.00 (51.70 to 52.70): VNC

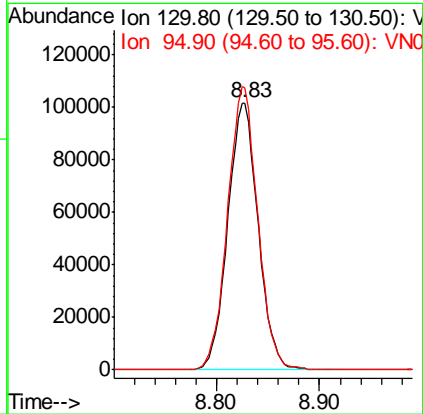
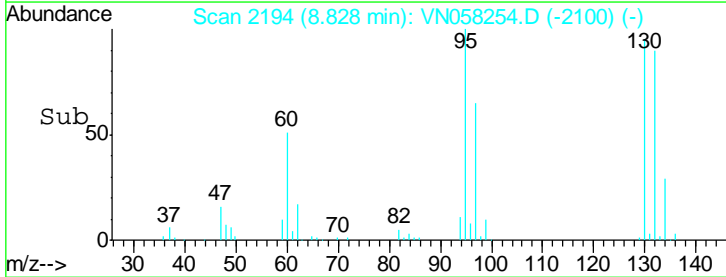


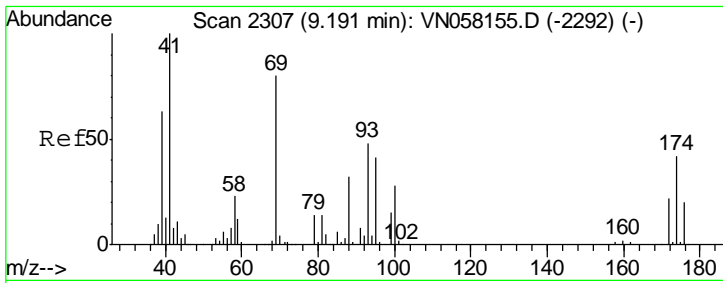
#44
 Trichloroethene
 Concen: 47.638 ug/l
 RT: 8.83 min Scan# 2194
 Delta R.T. 0.00 min
 Lab File: VN058254.D
 Acq: 20 Sep 2019 16:42

Tgt Ion	Resp	Lower	Upper
130	100		
95	105.5	0.0	207.8



Abundance Ion 129.80 (129.50 to 130.50): V
 Ion 94.90 (94.60 to 95.60): VNC

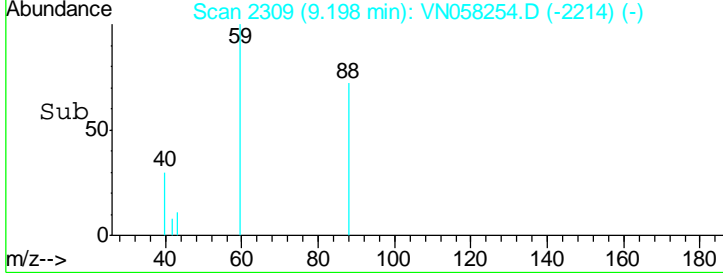
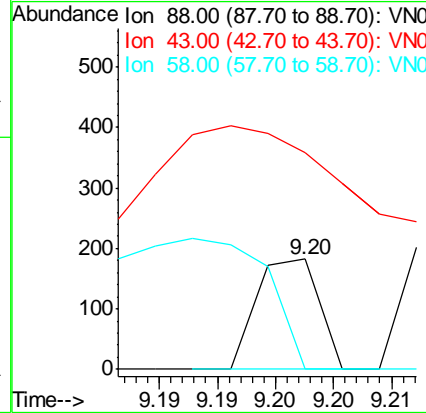
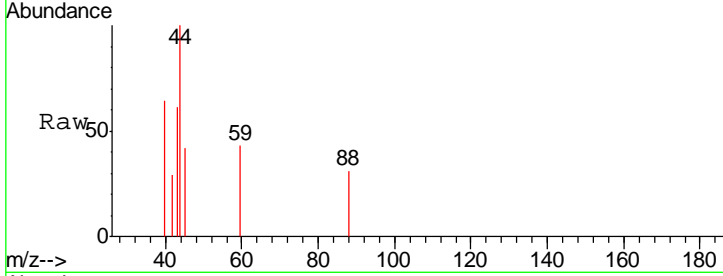




#49
 1,4-Dioxane
 Concen: 0.803 ug/l
 RT: 9.20 min Scan# 2309
 Delta R.T. 0.01 min
 Lab File: VN058254.D
 Acq: 20 Sep 2019 16:42

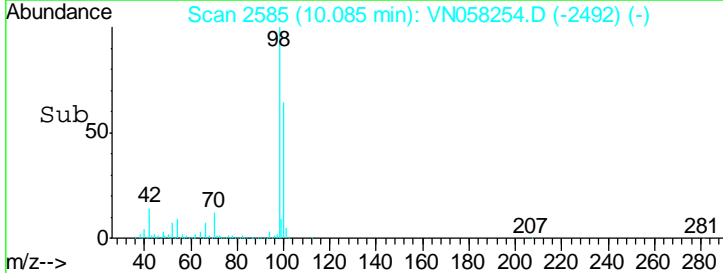
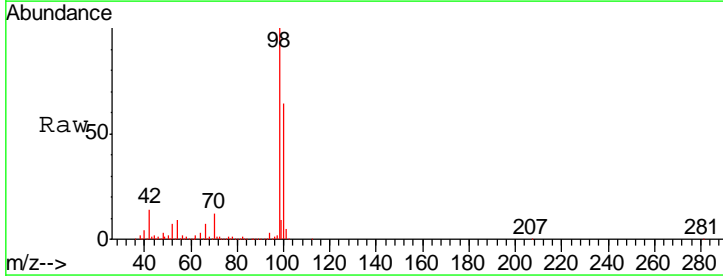
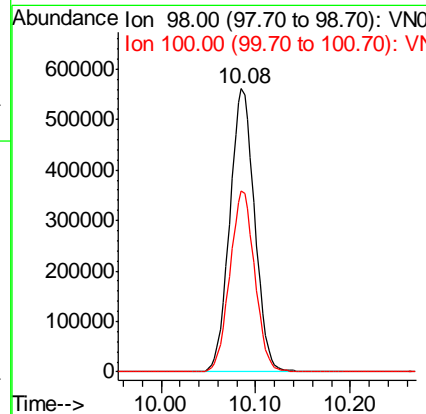
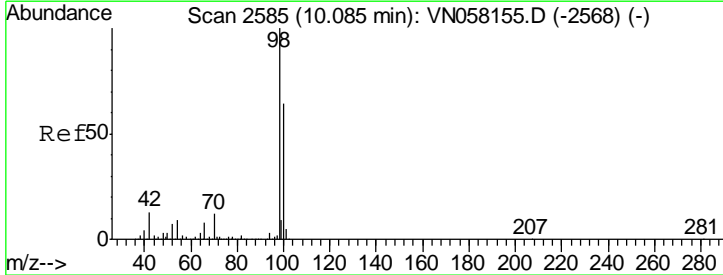
Instrument :
 MSVOA_N
ClientSampled :
 TT101D1-20190917DL

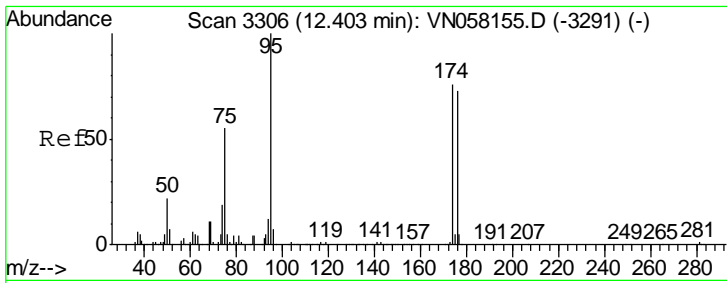
Tgt Ion	Resp	Lower	Upper
88	100		
43	182.4	27.8	41.8#
58	277.9	55.0	82.4#



#50
 Toluene-d8
 Concen: 53.290 ug/l
 RT: 10.08 min Scan# 2585
 Delta R.T. -0.00 min
 Lab File: VN058254.D
 Acq: 20 Sep 2019 16:42

Tgt Ion	Resp	Lower	Upper
98	100		
100	64.0	51.1	76.7

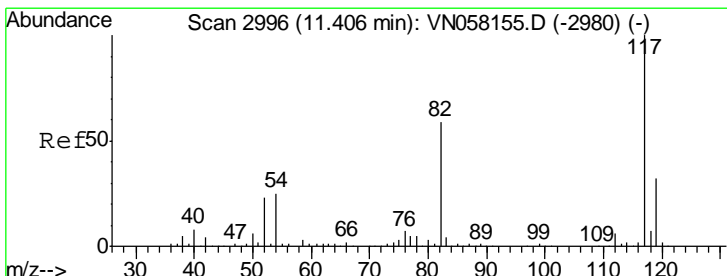
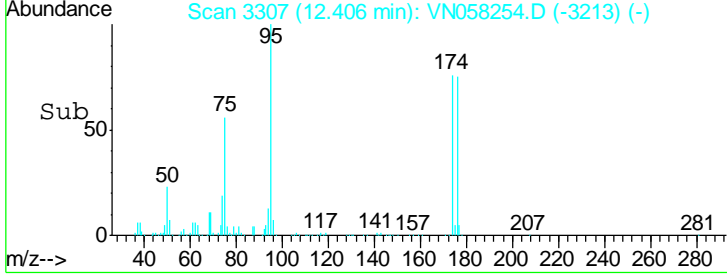
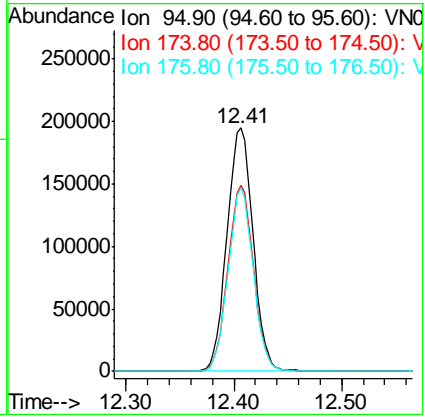
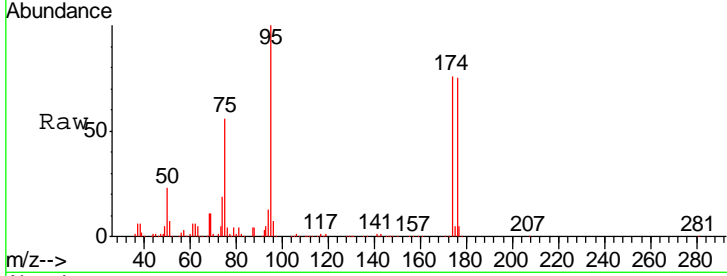




#62
 4-Bromofluorobenzene
 Concen: 46.143 ug/l
 RT: 12.41 min Scan# 3307
 Delta R.T. 0.00 min
 Lab File: VN058254.D
 Acq: 20 Sep 2019 16:42

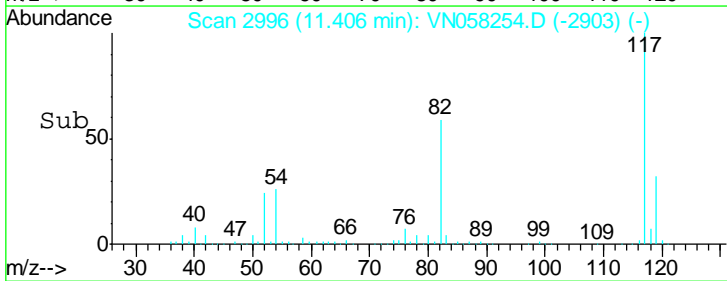
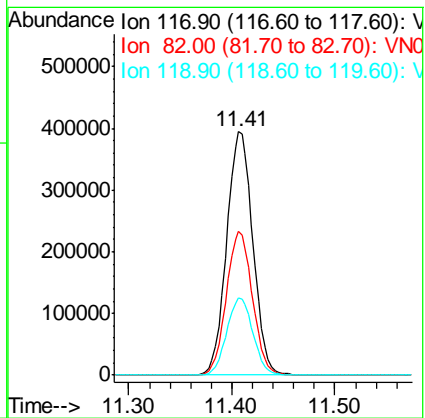
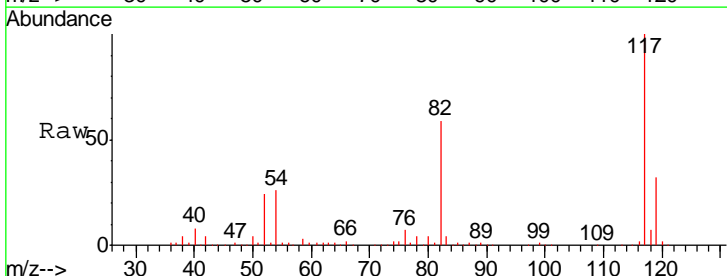
Instrument :
 MSVOA_N
 ClientSampled :
 TT101D1-20190917DL

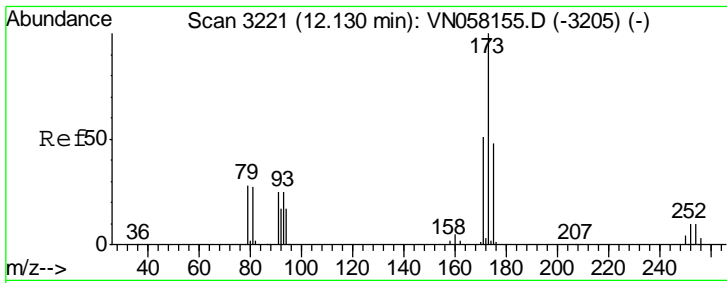
Tgt Ion	Resp	Lower	Upper
95	329925		
174	75.1	0.0	152.2
176	72.2	0.0	148.0



#63
 Chlorobenzene-d5
 Concen: 50.000 ug/l
 RT: 11.41 min Scan# 2996
 Delta R.T. -0.00 min
 Lab File: VN058254.D
 Acq: 20 Sep 2019 16:42

Tgt Ion	Resp	Lower	Upper
117	698461		
82	58.9	46.9	70.3
119	31.5	25.3	37.9

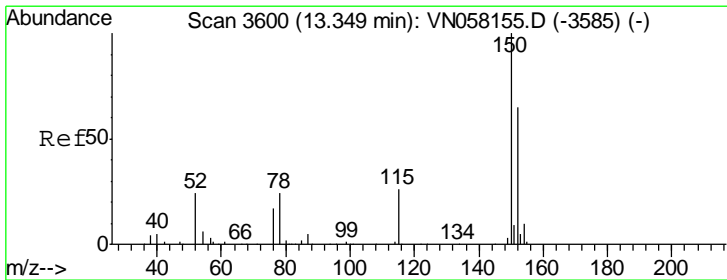
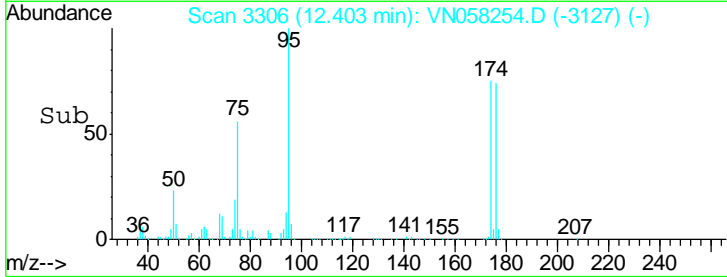
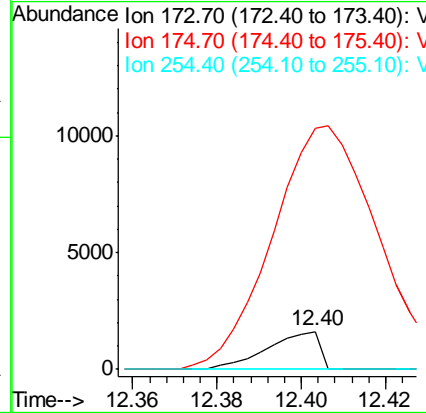
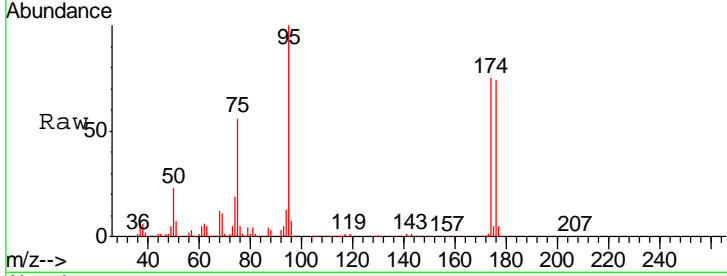




#71
 Bromoform
 Concen: 3.988 ug/l
 RT: 12.40 min Scan# 3306
 Delta R.T. 0.27 min
 Lab File: VN058254.D
 Acq: 20 Sep 2019 16:42

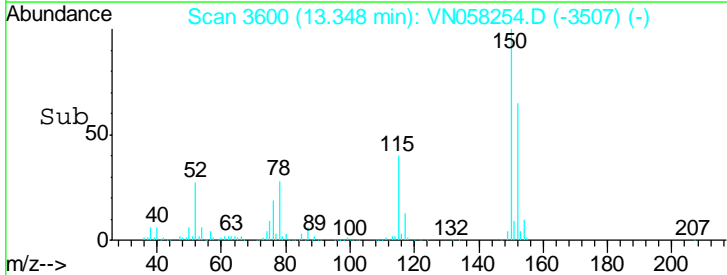
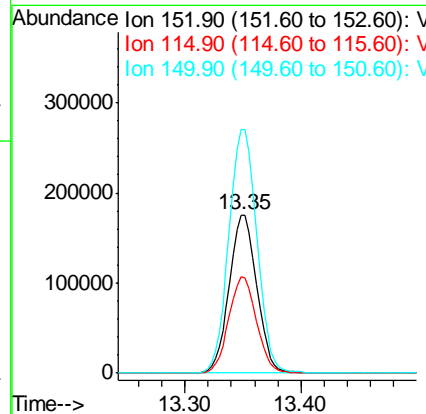
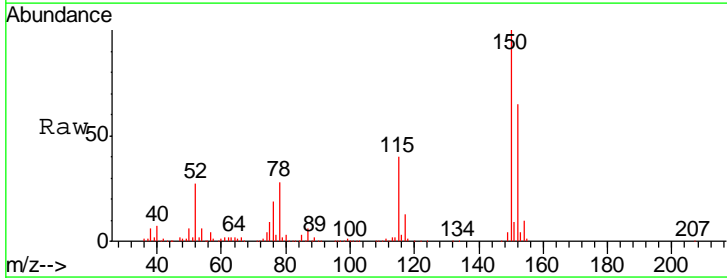
Instrument :
 MSVOA_N
 ClientSampled :
 TT101D1-20190917DL

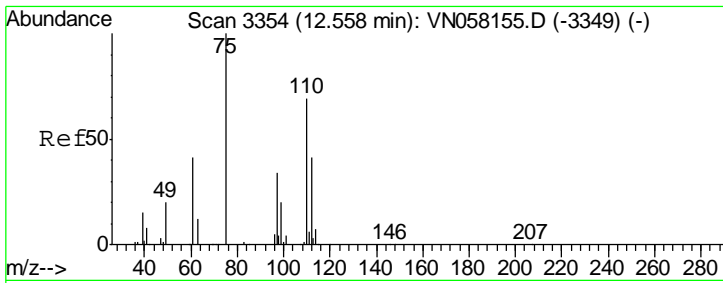
Tgt Ion	Resp	Lower	Upper
173	100		
175	1087.7	24.2	72.6#
254	0.0	0.1	0.1#



#72
 1,4-Dichlorobenzene-d4
 Concen: 50.000 ug/l
 RT: 13.35 min Scan# 3600
 Delta R.T. -0.00 min
 Lab File: VN058254.D
 Acq: 20 Sep 2019 16:42

Tgt Ion	Resp	Lower	Upper
152	100		
115	61.1	30.1	90.3
150	156.6	0.0	346.4

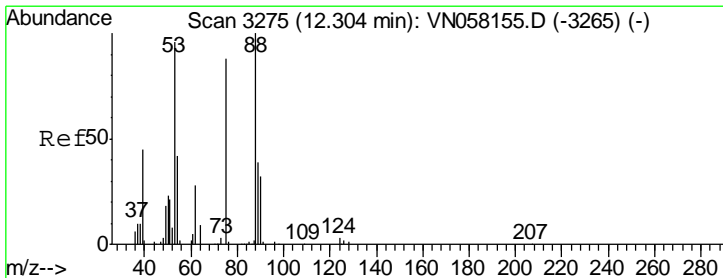
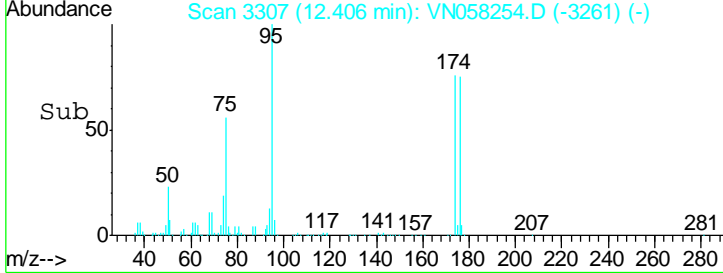
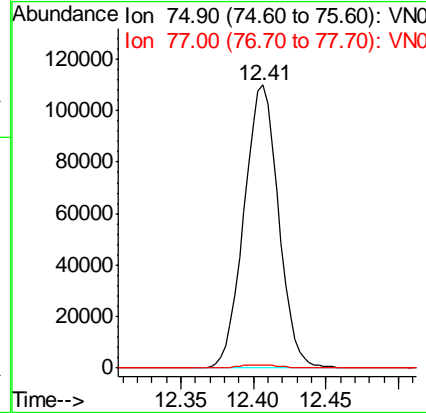
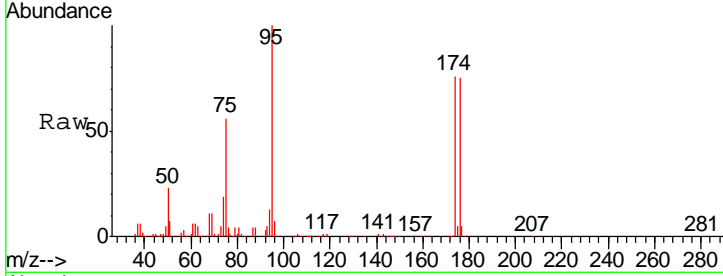




#76
 1,2,3-Trichloropropane
 Concen: 35.351 ug/l
 RT: 12.41 min Scan# 3307
 Delta R.T. -0.15 min
 Lab File: VN058254.D
 Acq: 20 Sep 2019 16:42

Instrument :
 MSVOA_N
 ClientSampled :
 TT101D1-20190917DL

Tgt Ion: 75 Resp: 182324
 Ion Ratio Lower Upper
 75 100
 77 1.3 0.0 0.0#



#81
 trans-1,4-Dichloro-2-butene
 Concen: 98.831 ug/l
 RT: 12.41 min Scan# 3307
 Delta R.T. 0.10 min
 Lab File: VN058254.D
 Acq: 20 Sep 2019 16:42

Tgt Ion: 75 Resp: 182324
 Ion Ratio Lower Upper
 75 100
 53 0.0 90.1 135.1#
 89 0.0 36.2 54.2#

