

Data Path : Z:\VOASRV\HPCHEM1\MSVOA N\DATA\VN092019\
 Data File : VN058269.D
 Acq On : 20 Sep 2019 22:14
 Operator : JC/SP
 Sample : K4975-02
 Misc : 5.00mL/MSVOA N/WATER
 ALS Vial : 37 Sample Multiplier: 1

Instrument :
 MSVOA_N
 ClientSampleId :
 TT101D1-20190917

Quant Time: Sep 23 07:48:23 2019
 Quant Method : Z:\VOASRV\HPCHEM1\MSVOA_N\METHODS\82N091819W.M
 Quant Title : SW846 8260
 QLast Update : Thu Sep 19 09:27:53 2019
 Response via : Initial Calibration

Internal Standards	R.T.	QIon	Response	Conc	Units	Dev(Min)
1) Pentafluorobenzene	7.65	168	484524	50.00	ug/l	0.00
34) 1,4-Difluorobenzene	8.57	114	795016	50.00	ug/l	0.00
63) Chlorobenzene-d5	11.41	117	679173	50.00	ug/l	0.00
72) 1,4-Dichlorobenzene-d4	13.35	152	278546	50.00	ug/l	0.00

System Monitoring Compounds

33) 1,2-Dichloroethane-d4	8.01	65	355218	52.64	ug/l	0.00
Spiked Amount				50.000		
			Recovery	=	105.28%	
35) Dibromofluoromethane	7.58	113	245262	50.75	ug/l	0.00
Spiked Amount				50.000		
			Recovery	=	101.50%	
50) Toluene-d8	10.08	98	1014114	53.85	ug/l	0.00
Spiked Amount				50.000		
			Recovery	=	107.70%	
62) 4-Bromofluorobenzene	12.41	95	320525	45.82	ug/l	0.00
Spiked Amount				50.000		
			Recovery	=	91.64%	

Target Compounds

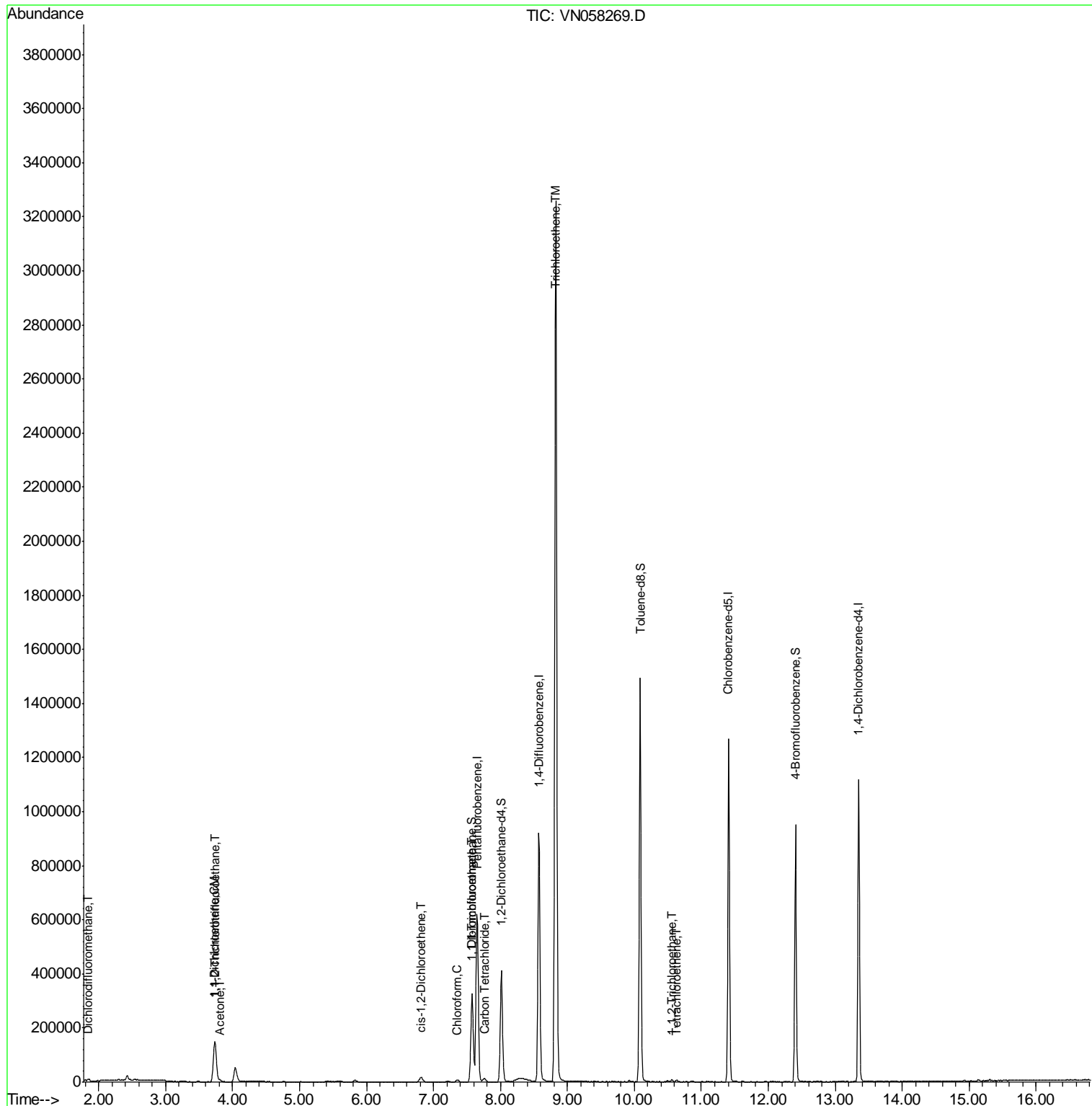
					Qvalue	
2) Dichlorodifluoromethane	1.83	85	5345	1.343	ug/l	97
9) 1,1,2-Trichlorotrifluoroet	3.74	101	72484	18.505	ug/l	98
12) 1,1-Dichloroethene	3.72	96	24169	7.830	ug/l	99
16) Acetone	3.81	43	10604	4.629	ug/l	94
27) cis-1,2-Dichloroethene	6.81	96	11407	2.322	ug/l	85
30) Chloroform	7.36	83	8049	0.861	ug/l	97
32) 1,1,1-Trichloroethane	7.56	97	3490	0.490	ug/l #	48
38) Carbon Tetrachloride	7.75	117	9084	1.576	ug/l #	86
44) Trichloroethene	8.82	130	1143396	266.823	ug/l	99
55) 1,1,2-Trichloroethane	10.57	97	2731	0.561	ug/l #	68
64) Tetrachloroethene	10.63	164	1357	0.410	ug/l #	87

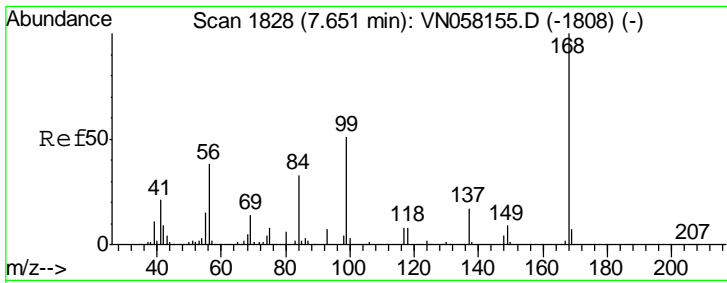
(#) = qualifier out of range (m) = manual integration (+) = signals summed

Data Path : Z:\VOASRV\HPCHEM1\MSVOA N\DATA\VN092019\
 Data File : VN058269.D
 Acq On : 20 Sep 2019 22:14
 Operator : JC/SP
 Sample : K4975-02
 Misc : 5.00mL/MSVOA N/WATER
 ALS Vial : 37 Sample Multiplier: 1

Instrument :
 MSVOA_N
 ClientSampleId :
 TT101D1-20190917

Quant Time: Sep 23 07:48:23 2019
 Quant Method : Z:\VOASRV\HPCHEM1\MSVOA_N\METHODS\82N091819W.M
 Quant Title : SW846 8260
 QLast Update : Thu Sep 19 09:27:53 2019
 Response via : Initial Calibration

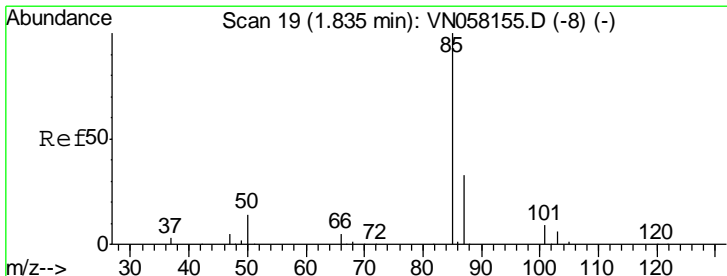
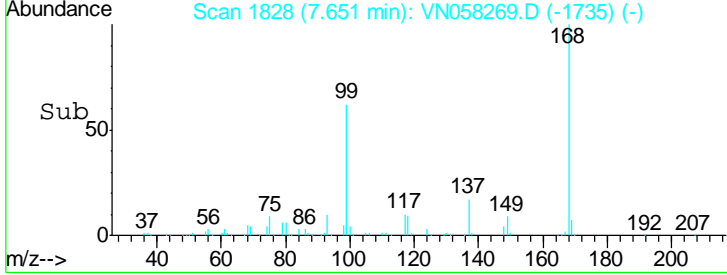
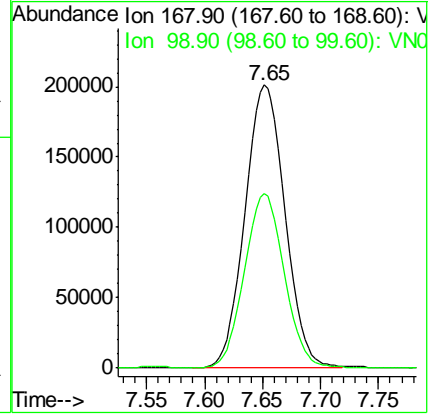
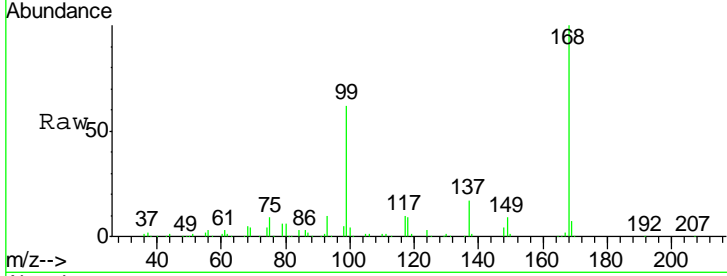




#1
 Pentafluorobenzene
 Concen: 50.000 ug/l
 RT: 7.65 min Scan# 1828
 Delta R.T. -0.00 min
 Lab File: VN058269.D
 Acq: 20 Sep 2019 22:14

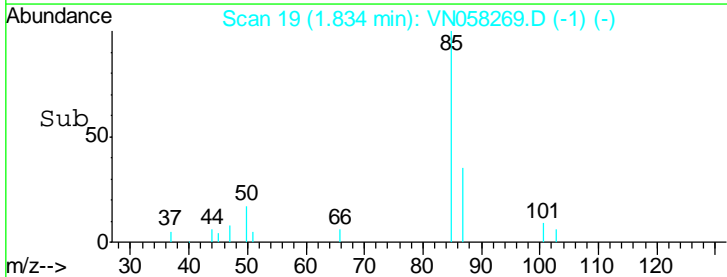
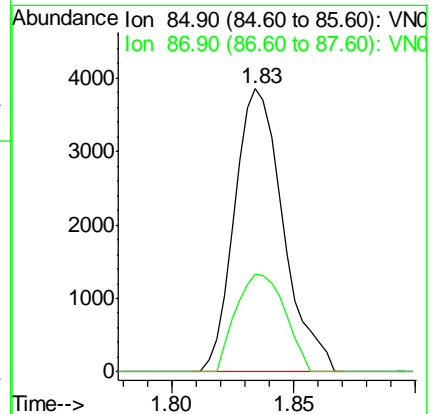
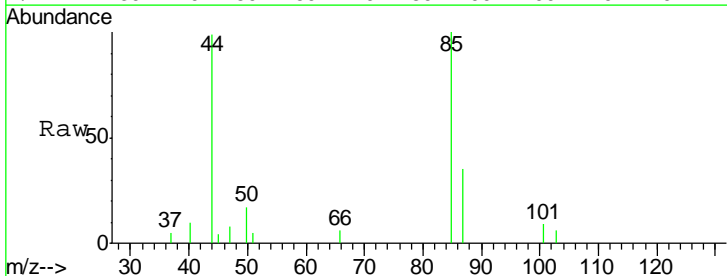
Instrument :
 MSVOA_N
 ClientSampleId :
 TT101D1-20190917

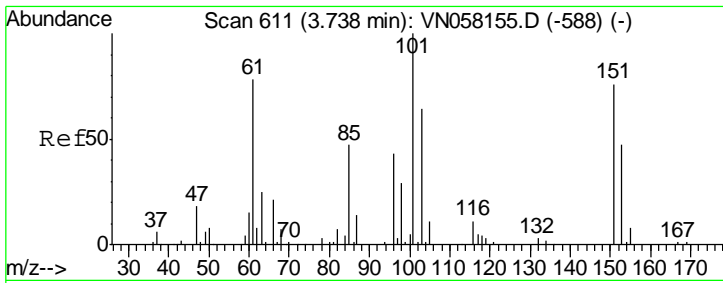
Tgt Ion: 168 Resp: 484524
 Ion Ratio Lower Upper
 168 100
 99 61.6 47.4 71.2



#2
 Dichlorodifluoromethane
 Concen: 1.343 ug/l
 RT: 1.83 min Scan# 19
 Delta R.T. -0.00 min
 Lab File: VN058269.D
 Acq: 20 Sep 2019 22:14

Tgt Ion: 85 Resp: 5345
 Ion Ratio Lower Upper
 85 100
 87 34.5 16.3 48.9

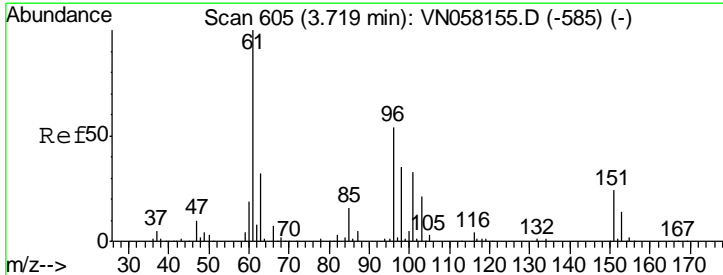
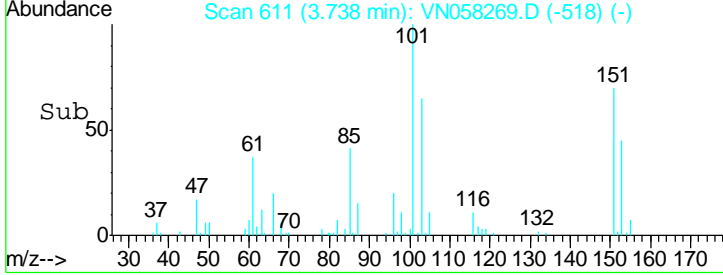
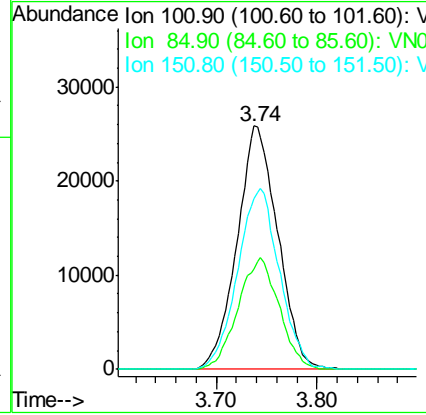
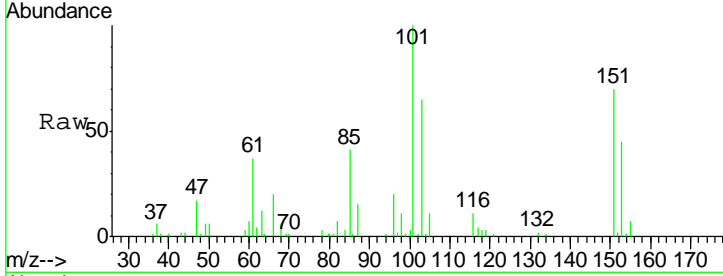




#9
 1,1,2-Trichlorotrifluoroethane
 Concen: 18.505 ug/l
 RT: 3.74 min Scan# 611
 Delta R.T. -0.00 min
 Lab File: VN058269.D
 Acq: 20 Sep 2019 22:14

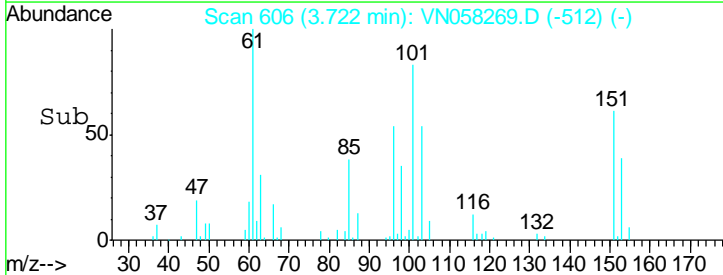
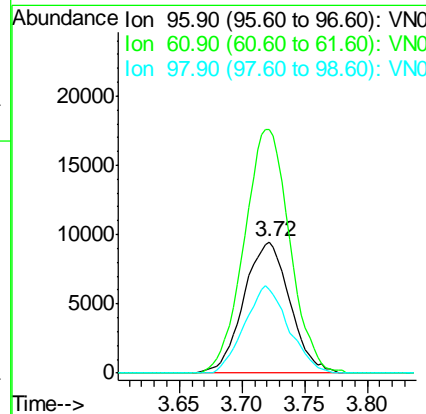
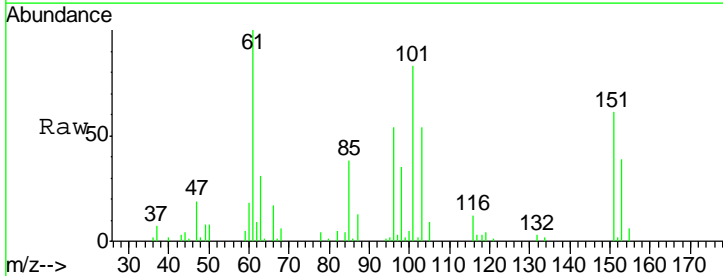
Instrument :
 MSVOA_N
 ClientSampled :
 TT101D1-20190917

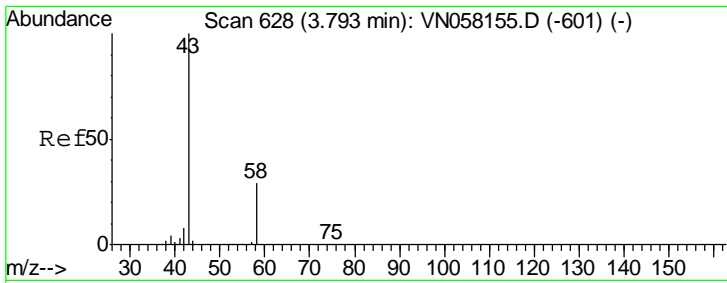
Tgt Ion	Resp	Lower	Upper
101	72484		
85	46.0	37.3	55.9
151	76.1	59.6	89.4



#12
 1,1-Dichloroethene
 Concen: 7.830 ug/l
 RT: 3.72 min Scan# 606
 Delta R.T. 0.00 min
 Lab File: VN058269.D
 Acq: 20 Sep 2019 22:14

Tgt Ion	Resp	Lower	Upper
96	24169		
61	185.1	149.5	224.3
98	64.0	52.4	78.6

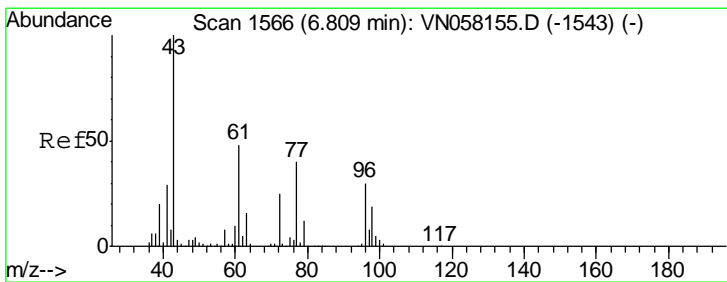
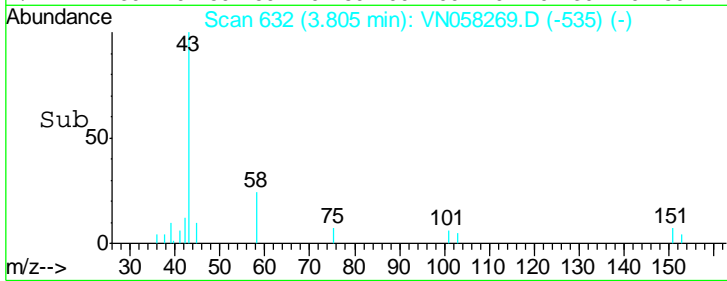
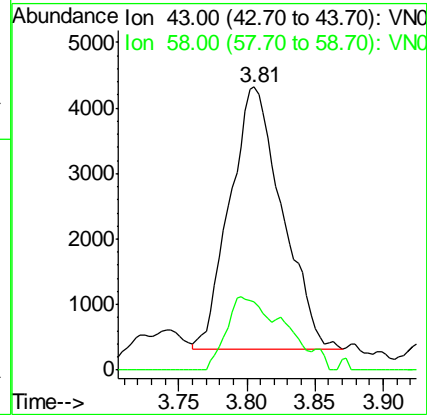
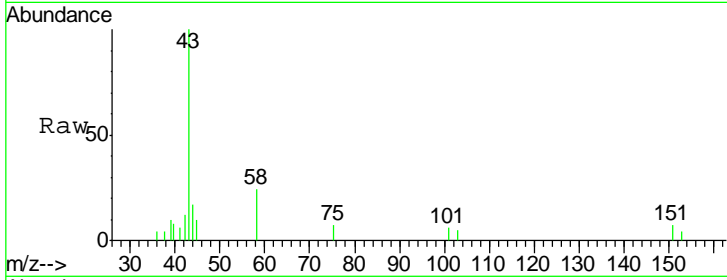




#16
 Acetone
 Concen: 4.629 ug/l
 RT: 3.81 min Scan# 632
 Delta R.T. 0.01 min
 Lab File: VN058269.D
 Acq: 20 Sep 2019 22:14

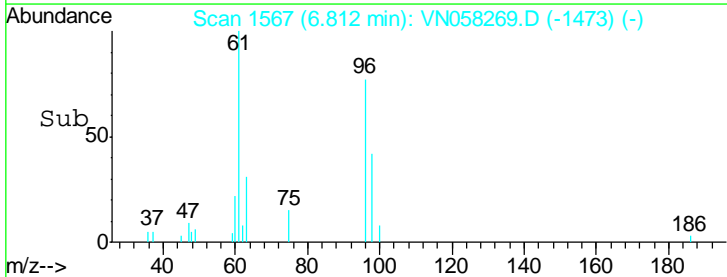
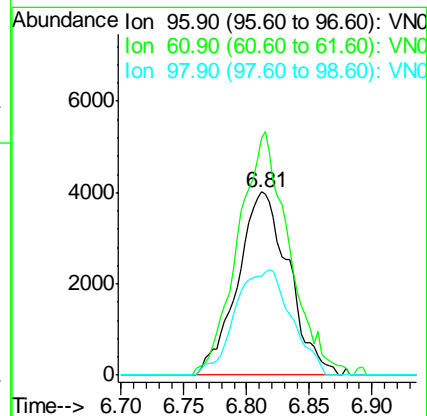
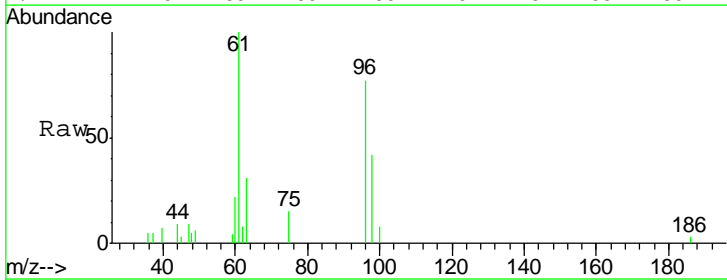
Instrument :
 MSVOA_N
 ClientSampleId :
 TT101D1-20190917

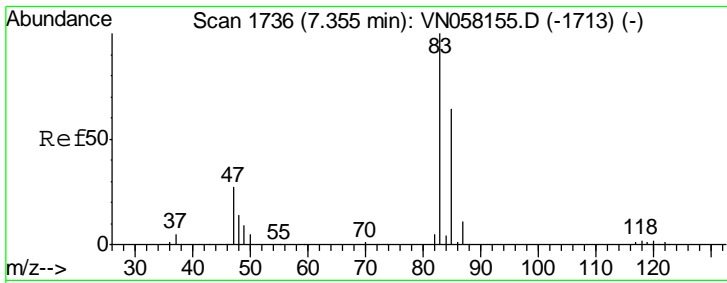
Tgt Ion	Resp	Lower	Upper
43	10604		
58	25.9	23.4	35.2



#27
 cis-1,2-Dichloroethene
 Concen: 2.322 ug/l
 RT: 6.81 min Scan# 1567
 Delta R.T. 0.00 min
 Lab File: VN058269.D
 Acq: 20 Sep 2019 22:14

Tgt Ion	Resp	Lower	Upper
96	11407		
61	132.4	0.0	319.0
98	63.0	0.0	126.6

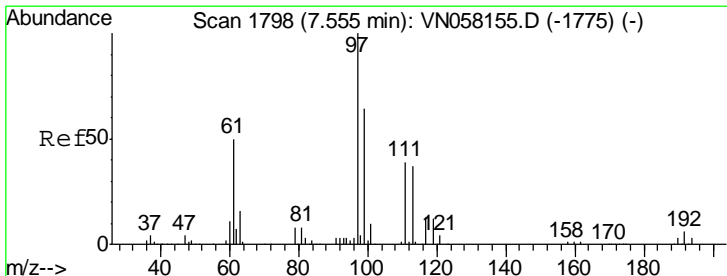
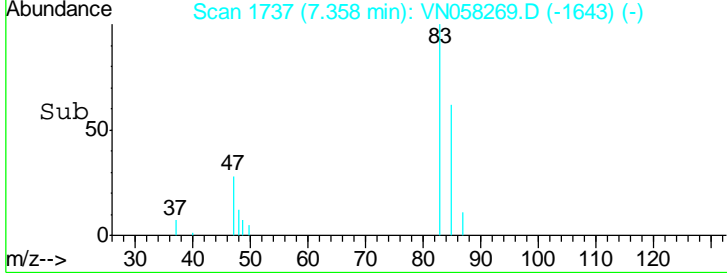
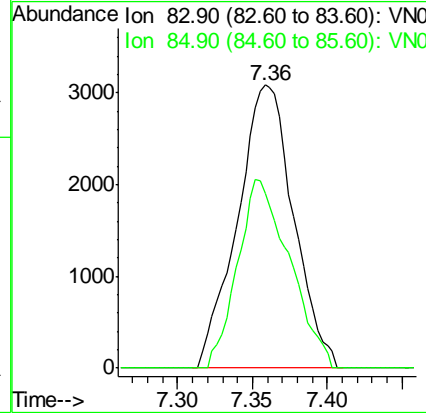
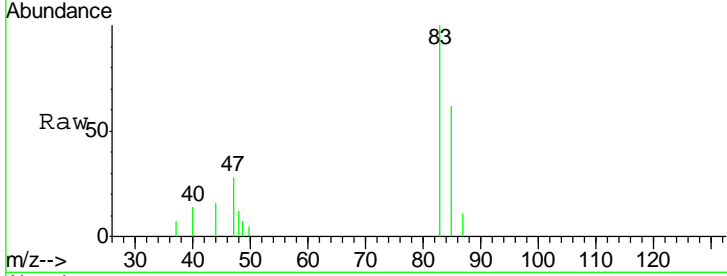




#30
 Chloroform
 Concen: 0.861 ug/l
 RT: 7.36 min Scan# 1737
 Delta R.T. 0.00 min
 Lab File: VN058269.D
 Acq: 20 Sep 2019 22:14

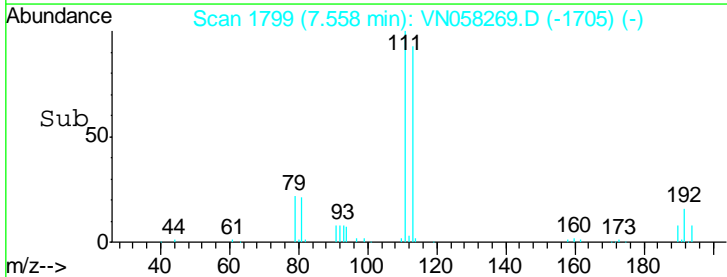
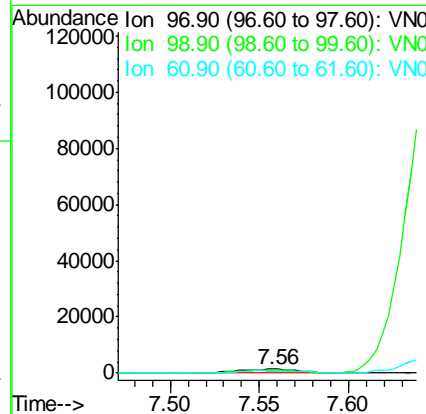
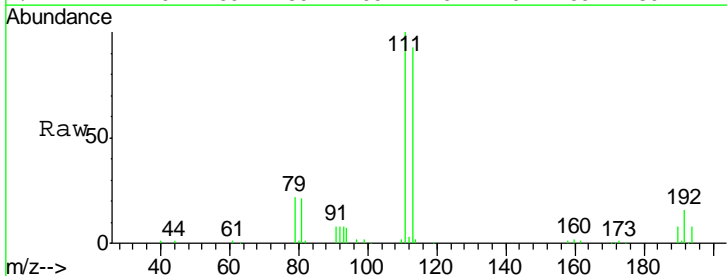
Instrument :
 MSVOA_N
ClientSampled :
 TT101D1-20190917

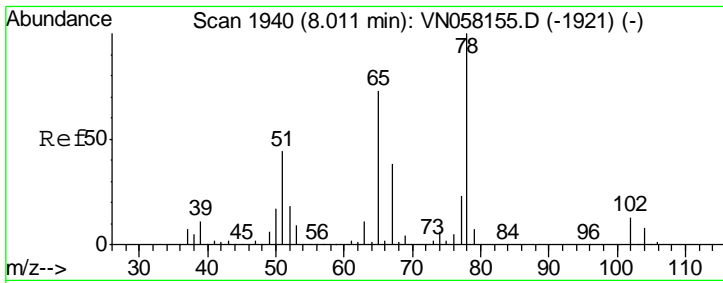
Tgt Ion	Resp	Lower	Upper
83	100		
85	61.9	51.4	77.2



#32
 1,1,1-Trichloroethane
 Concen: 0.490 ug/l
 RT: 7.56 min Scan# 1799
 Delta R.T. 0.00 min
 Lab File: VN058269.D
 Acq: 20 Sep 2019 22:14

Tgt Ion	Resp	Lower	Upper
97	100		
99	0.0	50.9	76.3#
61	58.4	39.2	58.8

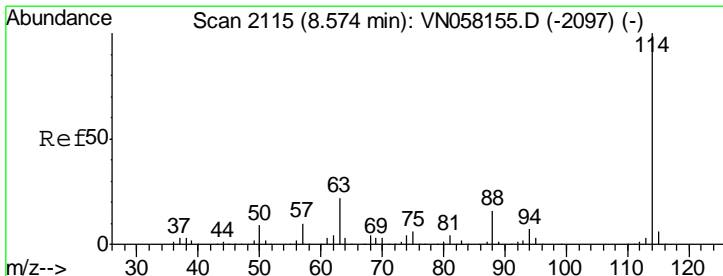
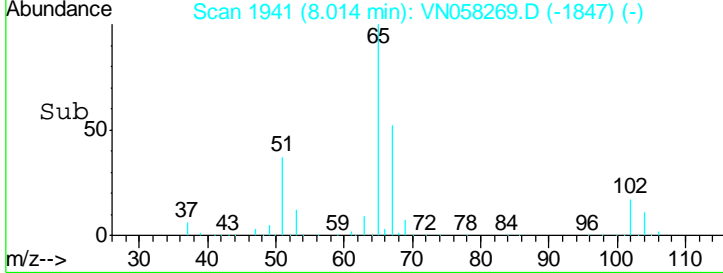
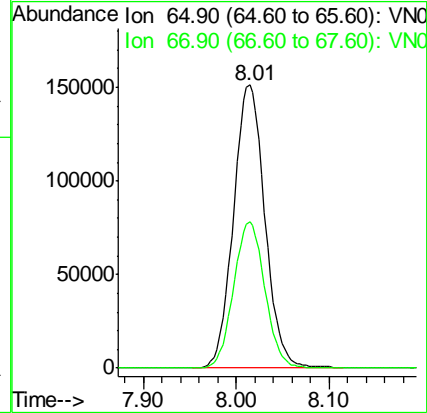
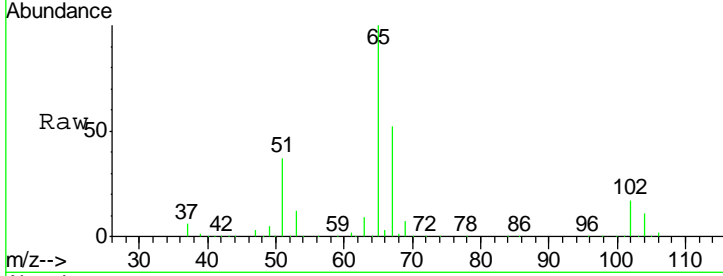




#33
 1,2-Dichloroethane-d4
 Concen: 52.637 ug/l
 RT: 8.01 min Scan# 1941
 Delta R.T. 0.00 min
 Lab File: VN058269.D
 Acq: 20 Sep 2019 22:14

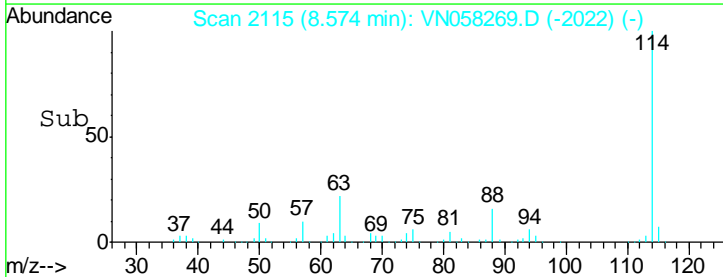
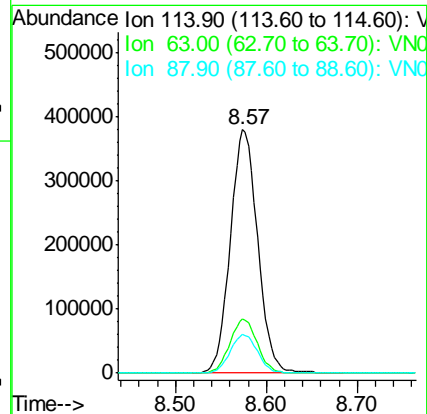
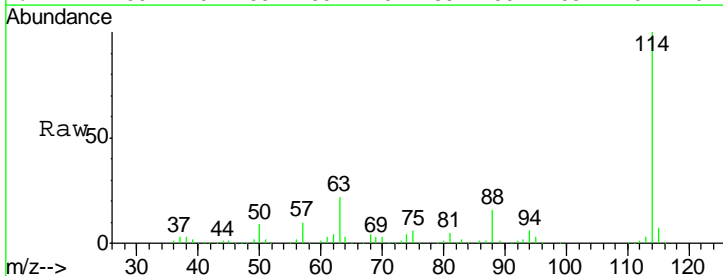
Instrument : MSVOA_N
 ClientSampled : TT101D1-20190917

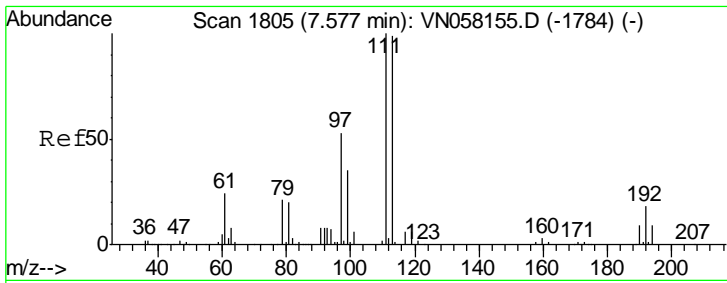
Tgt Ion: 65 Resp: 355218
 Ion Ratio Lower Upper
 65 100
 67 51.3 0.0 103.4



#34
 1,4-Difluorobenzene
 Concen: 50.000 ug/l
 RT: 8.57 min Scan# 2115
 Delta R.T. -0.00 min
 Lab File: VN058269.D
 Acq: 20 Sep 2019 22:14

Tgt Ion: 114 Resp: 795016
 Ion Ratio Lower Upper
 114 100
 63 22.4 0.0 44.2
 88 15.7 0.0 31.6

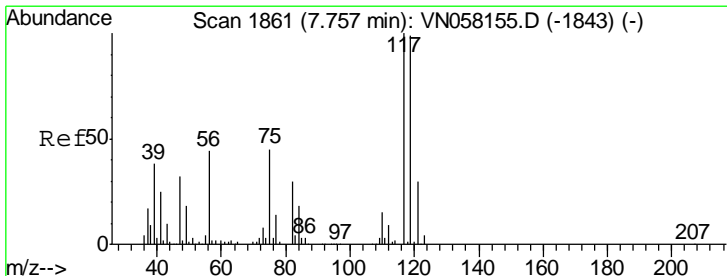
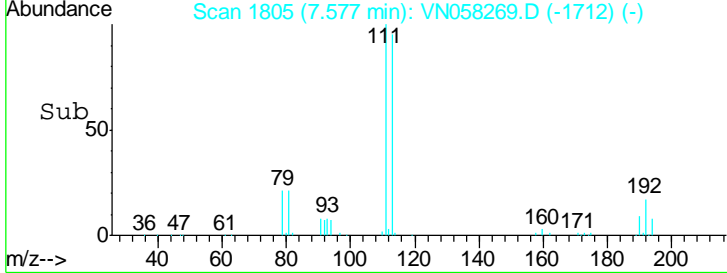
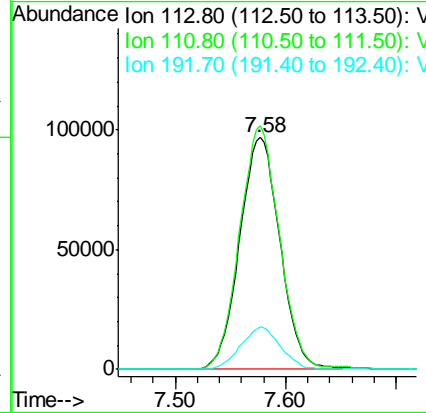
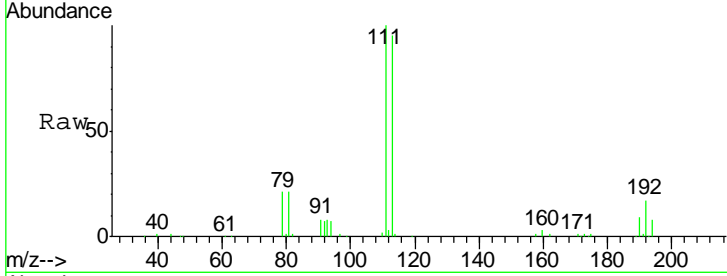




#35
 Dibromofluoromethane
 Concen: 50.747 ug/l
 RT: 7.58 min Scan# 1805
 Delta R.T. -0.00 min
 Lab File: VN058269.D
 Acq: 20 Sep 2019 22:14

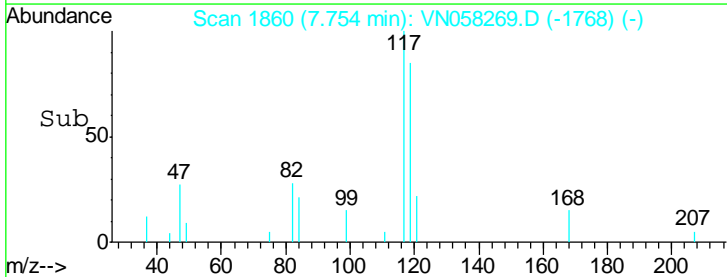
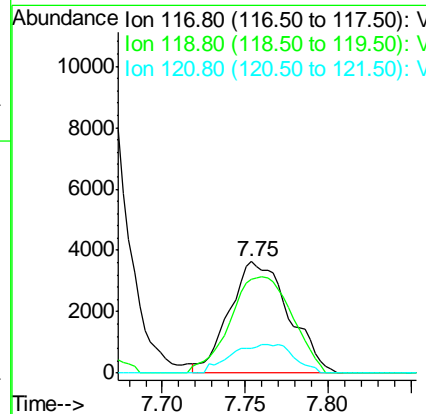
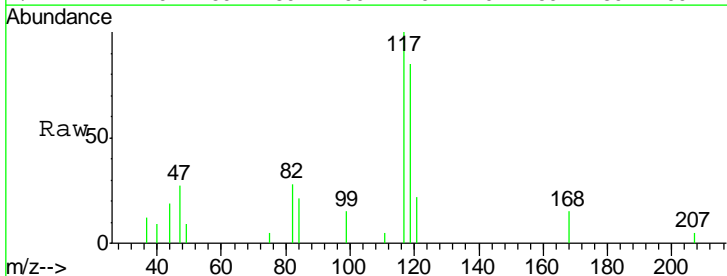
Instrument : MSVOA_N
 ClientSampled : TT101D1-20190917

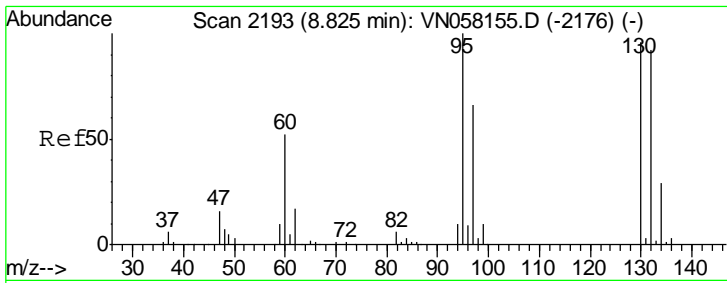
Tgt Ion	Resp	Lower	Upper
113	100		
111	103.5	81.8	122.6
192	18.1	14.5	21.7



#38
 Carbon Tetrachloride
 Concen: 1.576 ug/l
 RT: 7.75 min Scan# 1860
 Delta R.T. -0.00 min
 Lab File: VN058269.D
 Acq: 20 Sep 2019 22:14

Tgt Ion	Resp	Lower	Upper
117	100		
119	84.7	78.6	117.8
121	22.0	24.1	36.1#



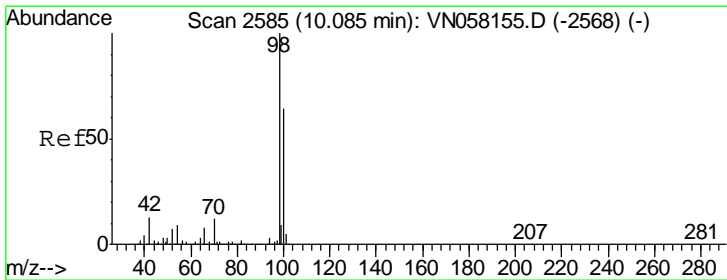
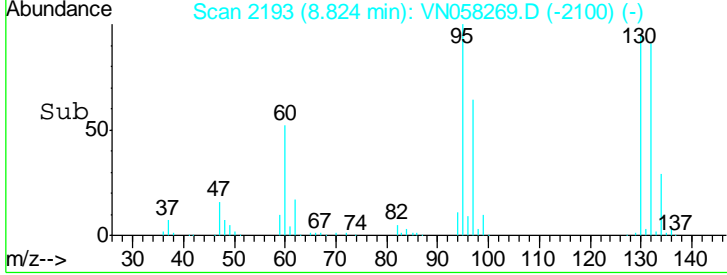
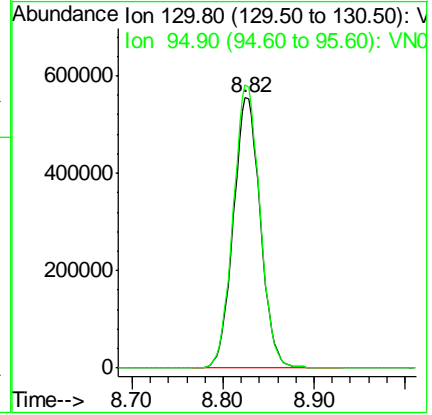
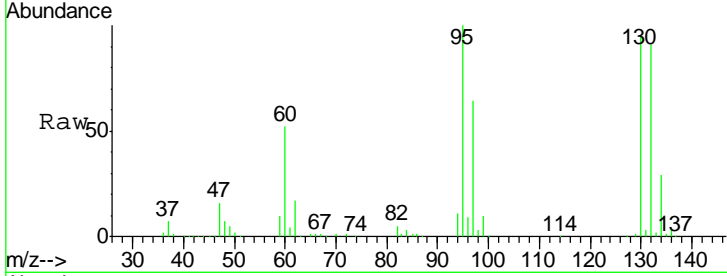


#44
 Trichloroethene
 Concen: 266.823 ug/l
 RT: 8.82 min Scan# 2193
 Delta R.T. -0.00 min
 Lab File: VN058269.D
 Acq: 20 Sep 2019 22:14

Instrument : MSVOA_N
 ClientSampled : TT101D1-20190917

Tgt Ion: 130 Resp: 1143396

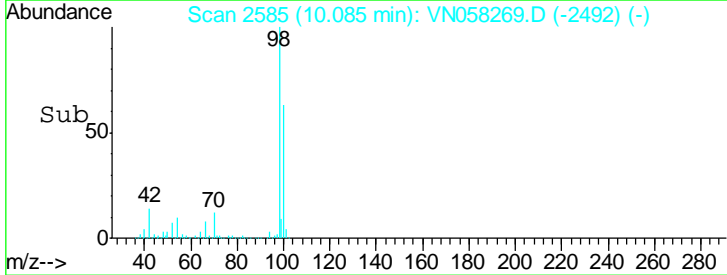
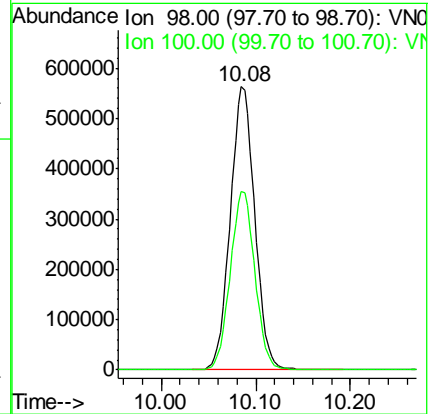
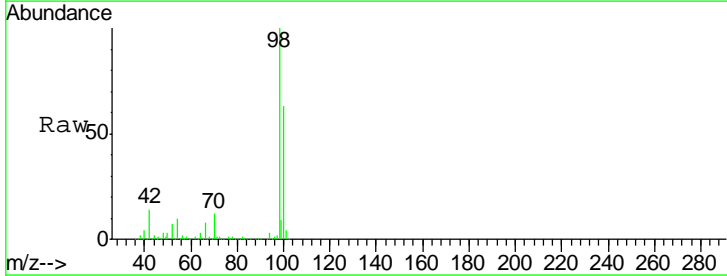
Ion	Ratio	Lower	Upper
130	100		
95	104.7	0.0	207.8

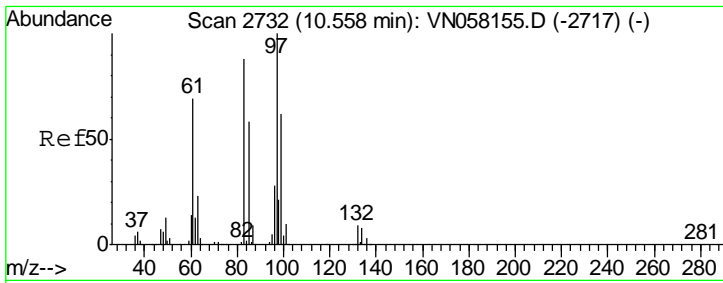


#50
 Toluene-d8
 Concen: 53.855 ug/l
 RT: 10.08 min Scan# 2585
 Delta R.T. -0.00 min
 Lab File: VN058269.D
 Acq: 20 Sep 2019 22:14

Tgt Ion: 98 Resp: 1014114

Ion	Ratio	Lower	Upper
98	100		
100	63.5	51.1	76.7

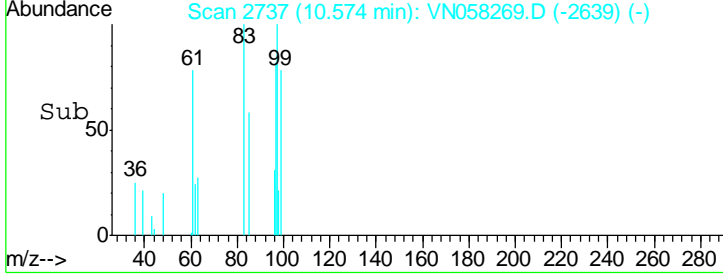
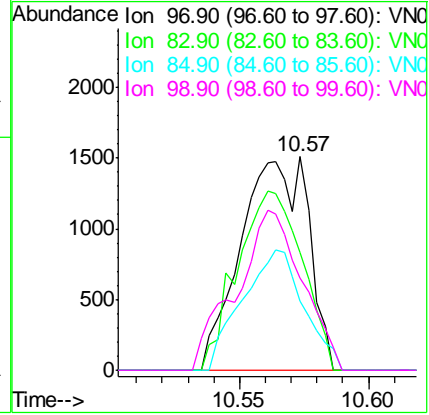
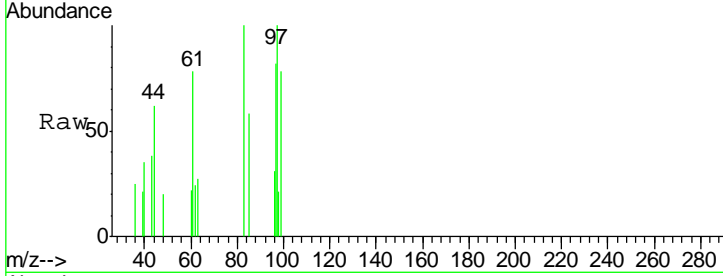




#55
 1,1,2-Trichloroethane
 Concen: 0.561 ug/l
 RT: 10.57 min Scan# 2737
 Delta R.T. 0.02 min
 Lab File: VN058269.D
 Acq: 20 Sep 2019 22:14

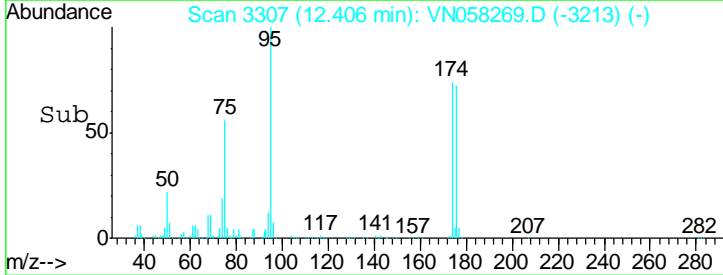
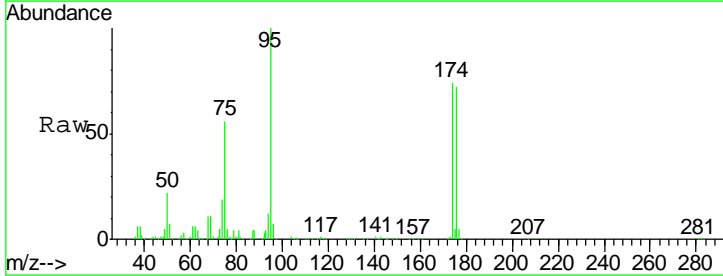
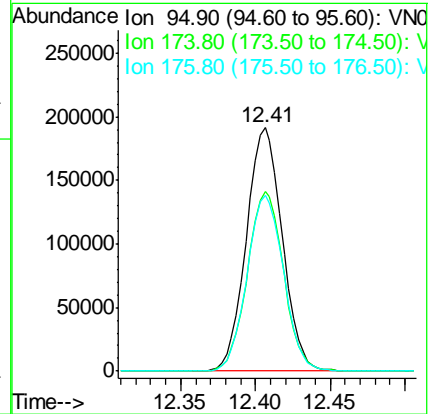
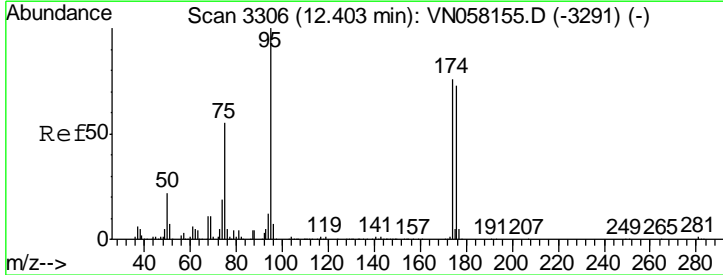
Instrument : MSVOA_N
 ClientSampled : TT101D1-20190917

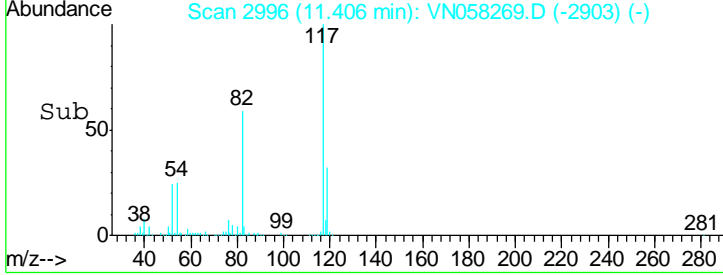
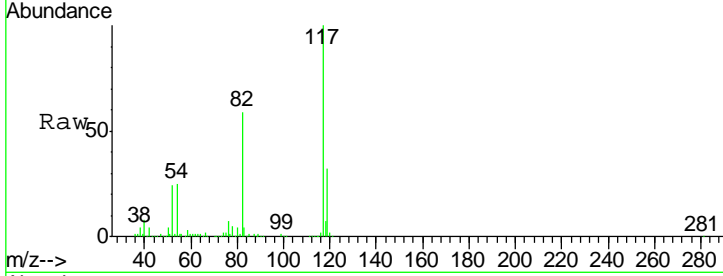
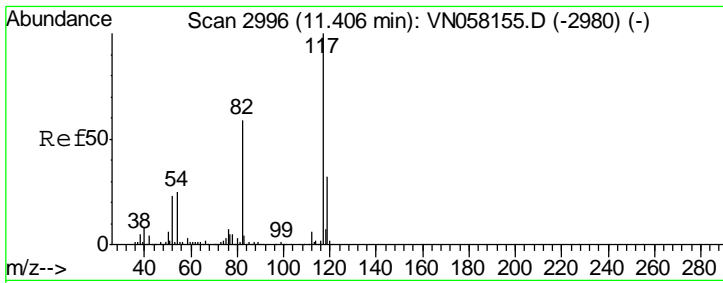
Tgt Ion	Resp	Lower	Upper
97	100		
83	55.1	70.4	105.6#
85	32.2	46.8	70.2#
99	43.0	49.9	74.9#



#62
 4-Bromofluorobenzene
 Concen: 45.823 ug/l
 RT: 12.41 min Scan# 3307
 Delta R.T. 0.00 min
 Lab File: VN058269.D
 Acq: 20 Sep 2019 22:14

Tgt Ion	Resp	Lower	Upper
95	100		
174	74.6	0.0	152.2
176	73.4	0.0	148.0

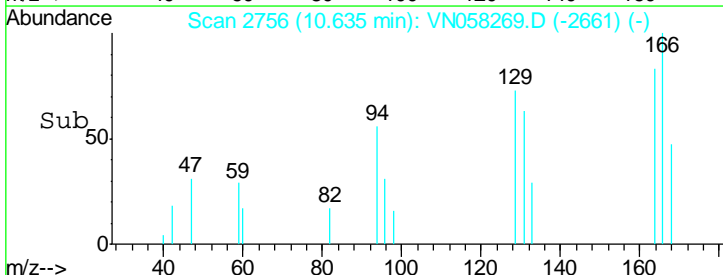
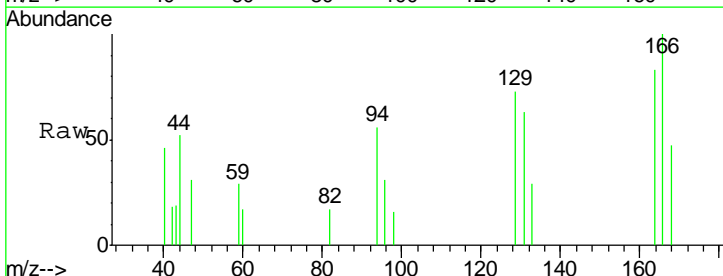
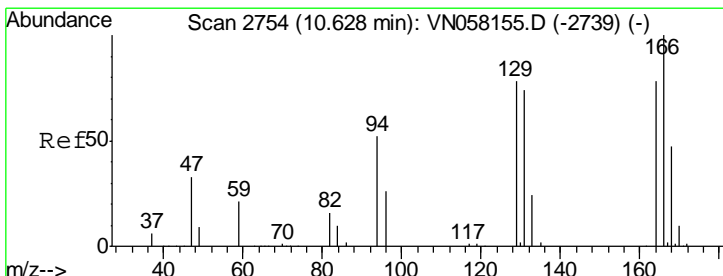
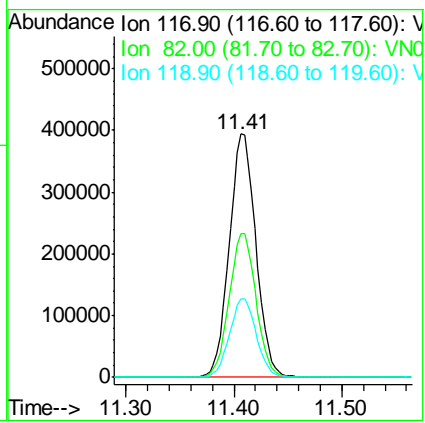




#63
 Chlorobenzene-d5
 Concen: 50.000 ug/l
 RT: 11.41 min Scan# 2996
 Delta R.T. -0.00 min
 Lab File: VN058269.D
 Acq: 20 Sep 2019 22:14

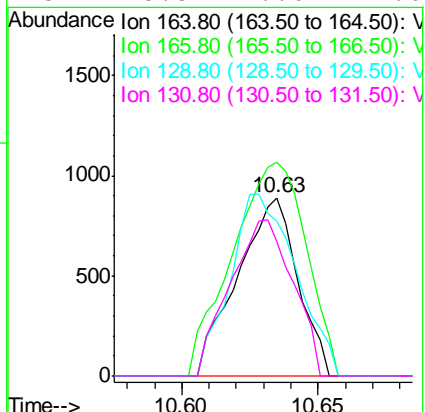
Instrument : MSVOA_N
 ClientSampled : TT101D1-20190917

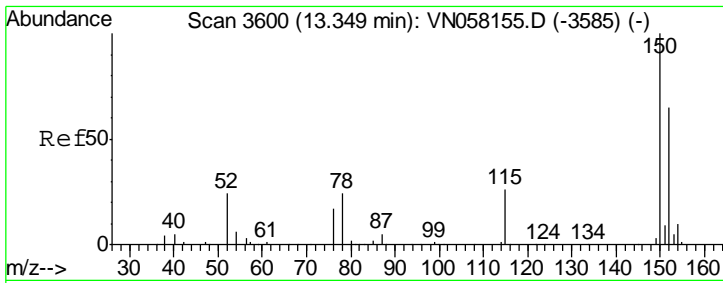
Tgt Ion	Resp	Lower	Upper
117	679173		
82	59.0	46.9	70.3
119	32.0	25.3	37.9



#64
 Tetrachloroethene
 Concen: 0.410 ug/l
 RT: 10.63 min Scan# 2756
 Delta R.T. 0.01 min
 Lab File: VN058269.D
 Acq: 20 Sep 2019 22:14

Tgt Ion	Resp	Lower	Upper
164	1357		
166	119.8	102.2	153.4
129	87.1	79.6	119.4
131	75.5	76.0	114.0#





#72
 1,4-Dichlorobenzene-d4
 Concen: 50.000 ug/l
 RT: 13.35 min Scan# 3600
 Delta R.T. -0.00 min
 Lab File: VN058269.D
 Acq: 20 Sep 2019 22:14

Instrument :
 MSVOA_N
ClientSampled :
 TT101D1-20190917

Tot Ion	Resp	Lower	Upper
152	100		
115	61.4	30.1	90.3
150	158.5	0.0	346.4

