

Data Path : Z:\voasrv\HPCHEM1\MSVOA_N\Data\VN092021\
 Data File : VN068560.D
 Acq On : 20 Sep 2021 14:46
 Operator : JC/MD
 Sample : VN0920MBL01
 Misc : 5.00g/10mL/100uL/5.00mL/MSVOA_N/MEOH
 ALS Vial : 3 Sample Multiplier: 1

Instrument :
 MSVOA_N
 ClientSampleId :
 VN0920MBL01

Integration Parameters: RTEINT.P

Integrator: RTE
 Smoothing : ON Filtering: 5
 Sampling : 1 Min Area: 3 % of largest Peak
 Start Thrs: 0.2 Max Peaks: 100
 Stop Thrs : 0 Peak Location: TOP

If leading or trailing edge < 100 prefer < Baseline drop else tangent >
 Peak separation: 5

Method : Z:\voasrv\HPCHEM1\MSVOA_N\methods\82N090721W.M
 Title : SW846 8260

Signal : TIC: VN068560.D\data.ms

peak #	R.T. min	first scan	max scan	last scan	PK TY	peak height	corr. area	corr. % max.	% of total
1	2.740	275	280	296	rVB2	13714	23202	1.17%	0.227%
2	7.318	1966	1987	2012	rBV	12284	39992	2.01%	0.391%
3	8.024	2227	2250	2261	rBV	283479	676503	34.02%	6.610%
4	8.088	2262	2274	2304	rVB	554690	1269307	63.84%	12.402%
5	8.439	2385	2405	2431	rBV2	264867	628959	31.63%	6.145%
6	8.970	2581	2603	2636	rBV	689545	1478877	74.38%	14.449%
7	10.443	3134	3152	3200	rBV	1033542	1988383	100.00%	19.428%
8	11.746	3620	3638	3668	rBV	893407	1650132	82.99%	16.123%
9	12.736	3989	4007	4031	rBV	652663	1138109	57.24%	11.120%
10	13.618	4324	4336	4344	rBV7	12511	20076	1.01%	0.196%
11	13.677	4344	4358	4384	rVB	695442	1215175	61.11%	11.873%
12	15.268	4935	4951	4967	rVB4	17677	29811	1.50%	0.291%
13	15.506	5027	5040	5055	rVB2	20293	40992	2.06%	0.401%
14	15.705	5097	5114	5129	rVB4	18333	35355	1.78%	0.345%

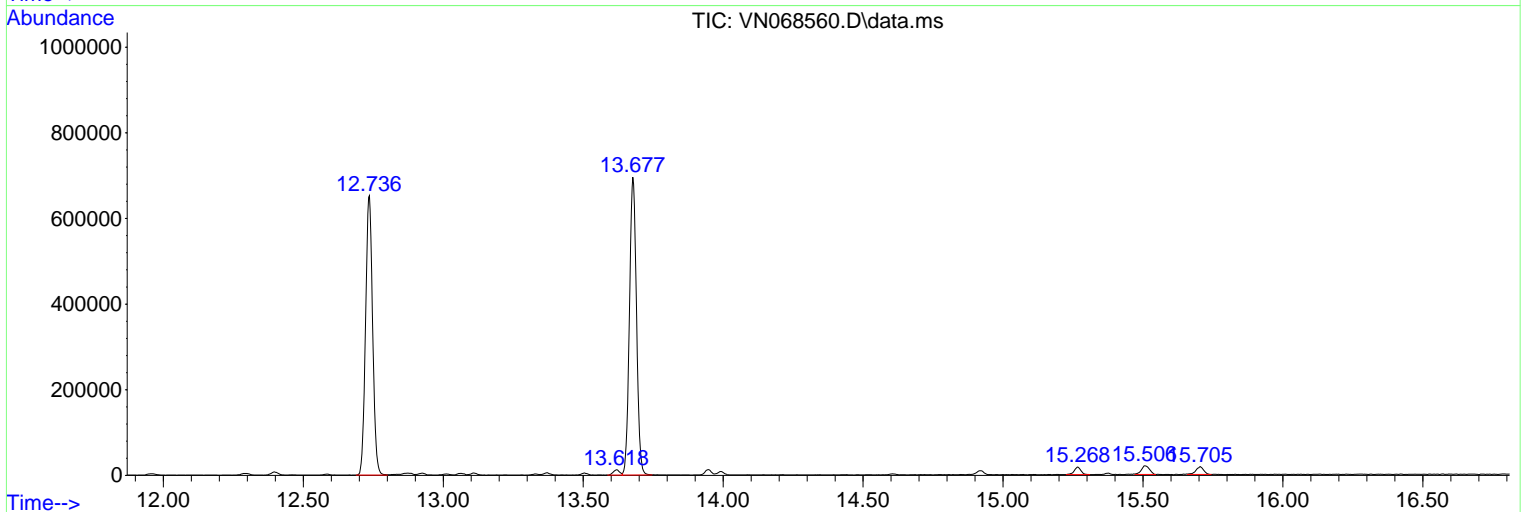
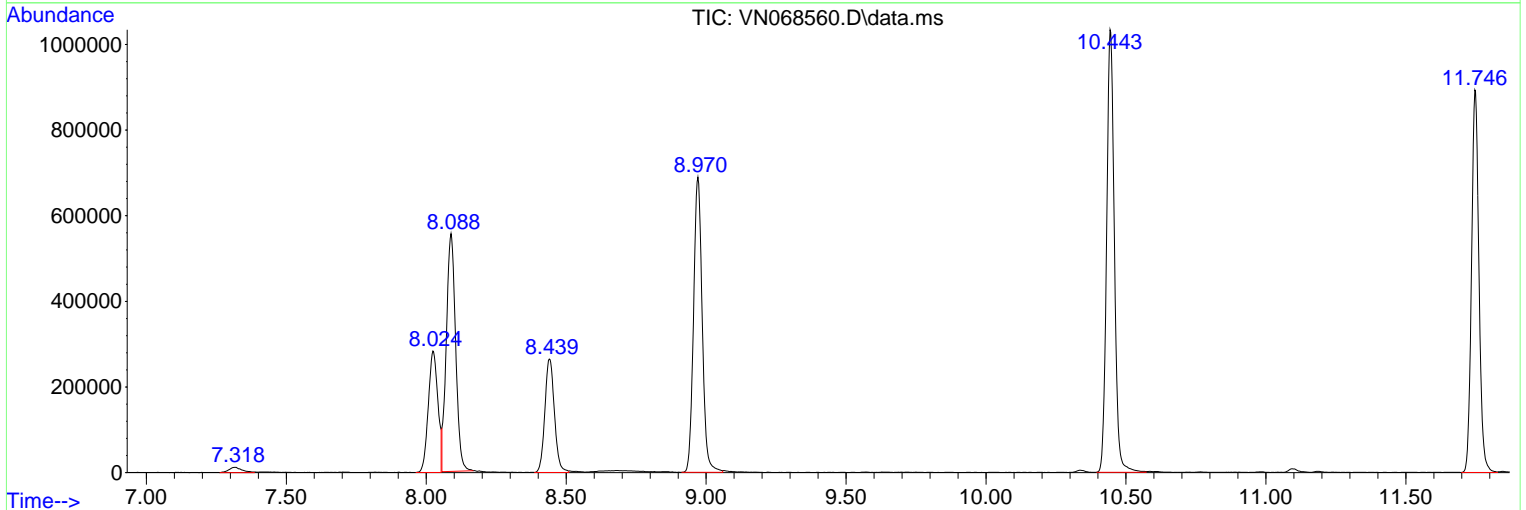
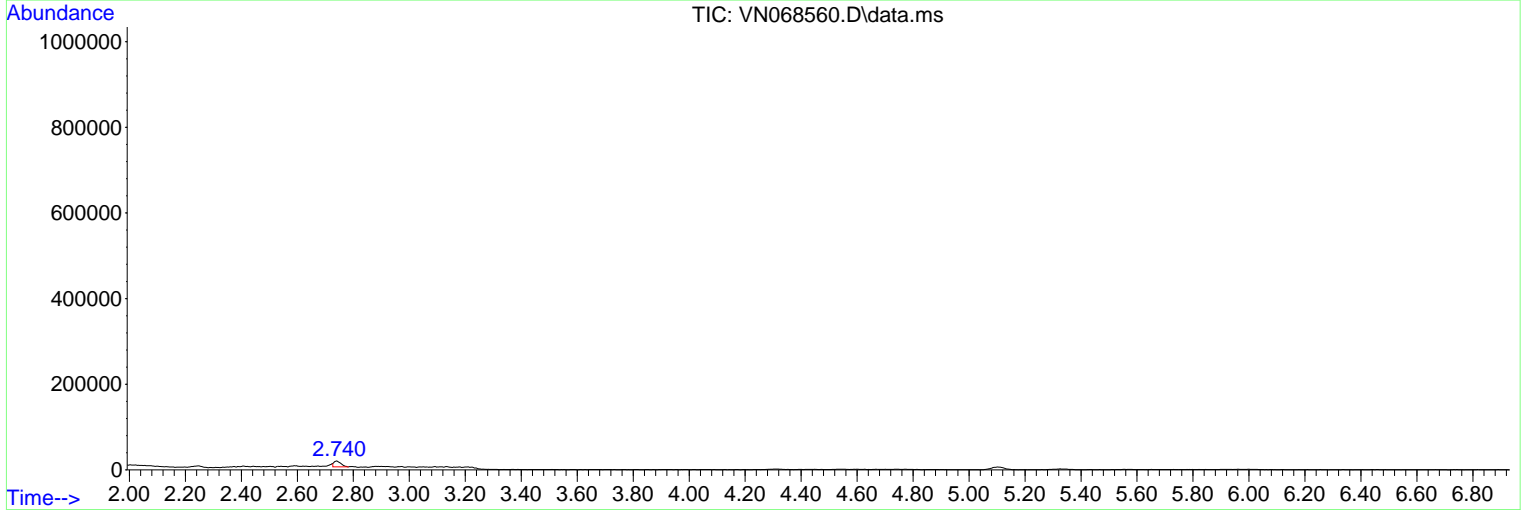
Sum of corrected areas: 10234873

Data Path : Z:\voasrv\HPCHEM1\MSVOA_N\Data\VN092021\
 Data File : VN068560.D
 Acq On : 20 Sep 2021 14:46
 Operator : JC/MD
 Sample : VN0920MBL01
 Misc : 5.00g/10mL/100uL/5.00mL/MSVOA_N/MEOH
 ALS Vial : 3 Sample Multiplier: 1

Instrument :
 MSVOA_N
 ClientSampleId :
 VN0920MBL01

Quant Method : Z:\voasrv\HPCHEM1\MSVOA_N\methods\82N090721W.M
 Quant Title : SW846 8260

TIC Library : C:\Database\NIST20.L
 TIC Integration Parameters: LSCINT.P



Data Path : Z:\voasrv\HPCHEM1\MSVOA_N\Data\VN092021\
Data File : VN068560.D
Acq On : 20 Sep 2021 14:46
Operator : JC/MD
Sample : VN0920MBL01
Misc : 5.00g/10mL/100uL/5.00mL/MSVOA_N/MEOH
ALS Vial : 3 Sample Multiplier: 1

Instrument :
MSVOA_N
ClientSampleId :
VN0920MBL01

Quant Method : Z:\voasrv\HPCHEM1\MSVOA_N\methods\82N090721W.M
Quant Title : SW846 8260

TIC Library : C:\Database\NIST20.L
TIC Integration Parameters: LSCINT.P

No Library Search Compounds Detected

Data Path : Z:\voasrv\HPCHEM1\MSVOA_N\Data\VN092021\
Data File : VN068560.D
Acq On : 20 Sep 2021 14:46
Operator : JC/MD
Sample : VN0920MBL01
Misc : 5.00g/10mL/100uL/5.00mL/MSVOA_N/MEOH
ALS Vial : 3 Sample Multiplier: 1

Instrument :
MSVOA_N
ClientSampleId :
VN0920MBL01

Quant Method : Z:\voasrv\HPCHEM1\MSVOA_N\methods\82N090721W.M
Quant Title : SW846 8260

TIC Library : C:\Database\NIST20.L
TIC Integration Parameters: LSCINT.P

TIC Top Hit name	RT	EstConc	Units	Response	--Internal Standard--			
					#	RT	Resp	Conc
