

Data Path : Z:\voasrv\HPCHEM1\MSVOA_N\Data\VN092024\
 Data File : VN084084.D
 Acq On : 21 Sep 2024 02:35
 Operator : JC\MD
 Sample : PB163512TB
 Misc : 5.0mL/MSVOA_N/WATER
 ALS Vial : 33 Sample Multiplier: 1

Instrument :
 MSVOA_N
 ClientSampleId :
 PB163512TB

Manual Integrations
 APPROVED

Reviewed By : John Carlone 09/23/2024
 Supervised By : Mahesh Dadoda 09/23/2024

Quant Time: Sep 21 03:48:45 2024
 Quant Method : Z:\voasrv\HPCHEM1\MSVOA_N\methods\82N091024W.M
 Quant Title : SW846 8260
 QLast Update : Wed Sep 11 15:18:56 2024
 Response via : Initial Calibration

Compound	R.T.	QIon	Response	Conc	Units	Dev(Min)
Internal Standards						
1) Pentafluorobenzene	8.224	168	147190	50.000	ug/l	0.00
34) 1,4-Difluorobenzene	9.100	114	260342	50.000	ug/l	0.00
63) Chlorobenzene-d5	11.865	117	233307	50.000	ug/l	0.00
72) 1,4-Dichlorobenzene-d4	13.794	152	90947	50.000	ug/l	0.00
System Monitoring Compounds						
33) 1,2-Dichloroethane-d4	8.577	65	121039	54.536	ug/l	0.00
Spiked Amount	50.000	Range	74 - 125	Recovery	=	109.080%
35) Dibromofluoromethane	8.165	113	83136	49.881	ug/l	0.00
Spiked Amount	50.000	Range	75 - 124	Recovery	=	99.760%
50) Toluene-d8	10.565	98	324030	56.238	ug/l	0.00
Spiked Amount	50.000	Range	86 - 113	Recovery	=	112.480%
62) 4-Bromofluorobenzene	12.847	95	113777	47.862	ug/l	0.00
Spiked Amount	50.000	Range	77 - 121	Recovery	=	95.720%
Target Compounds						
16) Acetone	4.430	43	47679	53.589	ug/l	90
20) Methylene Chloride	5.277	84	5402	2.967	ug/l #	88
25) 2-Butanone	7.494	43	6801	5.816	ug/l #	83
43) Isopropyl Acetate	8.688	43	119625m	28.991	ug/l	

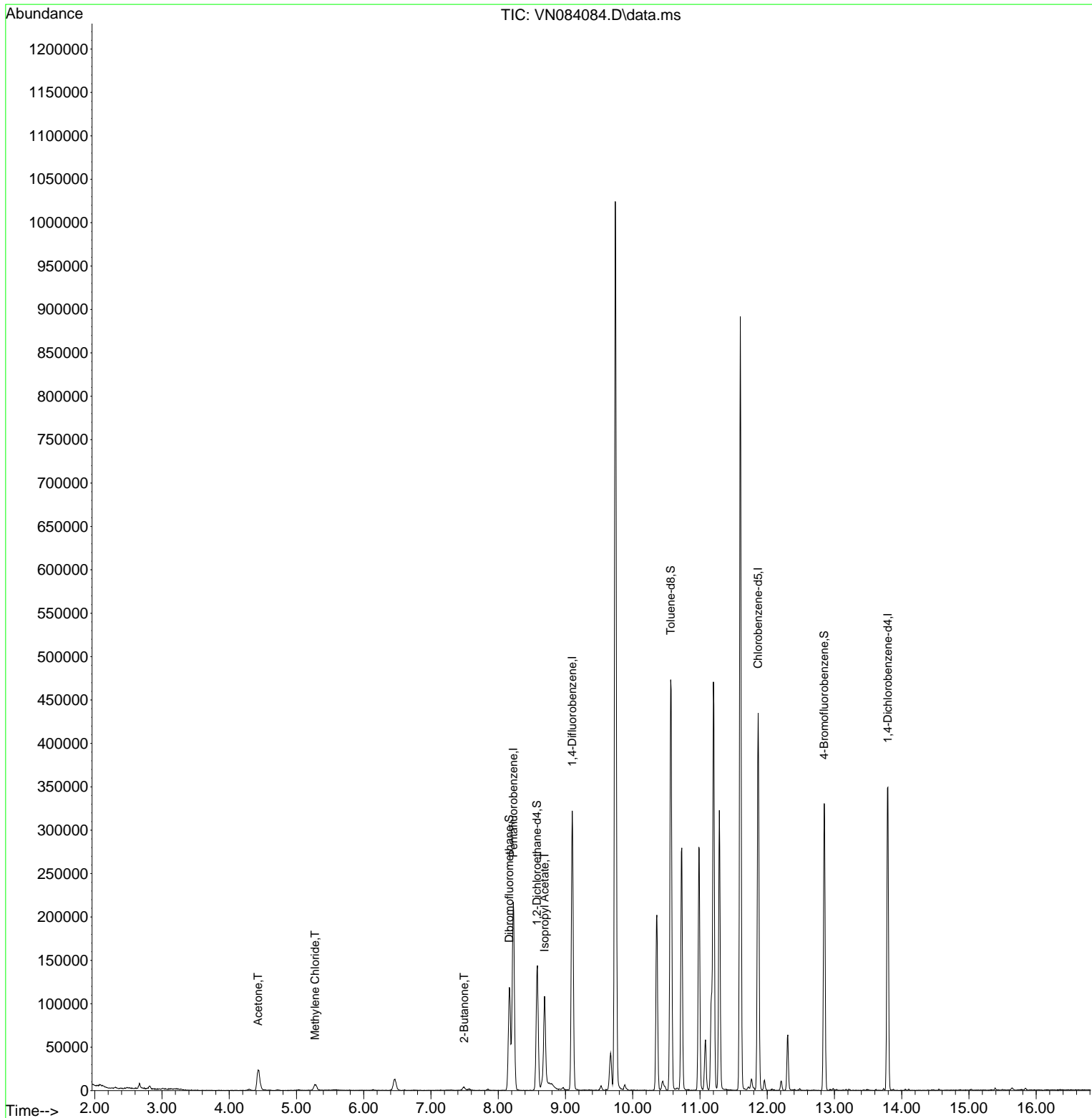
(#) = qualifier out of range (m) = manual integration (+) = signals summed

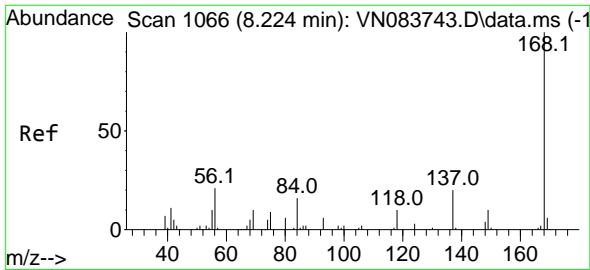
Data Path : Z:\voasrv\HPCHEM1\MSVOA_N\Data\VN092024\
Data File : VN084084.D
Acq On : 21 Sep 2024 02:35
Operator : JC\MD
Sample : PB163512TB
Misc : 5.0mL/MSVOA_N/WATER
ALS Vial : 33 Sample Multiplier: 1

Instrument :
MSVOA_N
ClientSampleId :
PB163512TB

Quant Time: Sep 21 03:48:45 2024
Quant Method : Z:\voasrv\HPCHEM1\MSVOA_N\methods\82N091024W.M
Quant Title : SW846 8260
QLast Update : Wed Sep 11 15:18:56 2024
Response via : Initial Calibration

Manual Integrations
APPROVED
Reviewed By :John Carlone 09/23/2024
Supervised By :Mahesh Dadoda 09/23/2024





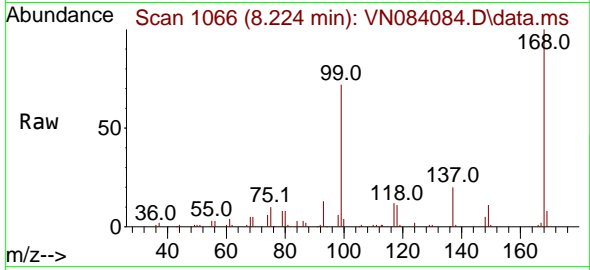
#1
 Pentafluorobenzene
 Concen: 50.000 ug/l
 RT: 8.224 min Scan# 1066
 Delta R.T. -0.000 min
 Lab File: VN084084.D
 Acq: 21 Sep 2024 02:35

Instrument :

MSVOA_N

Client Sample Id :

PB163512TB



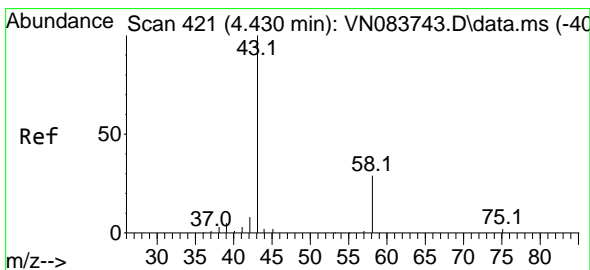
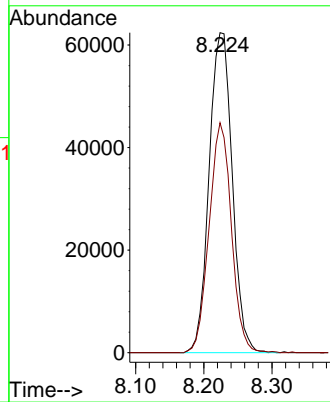
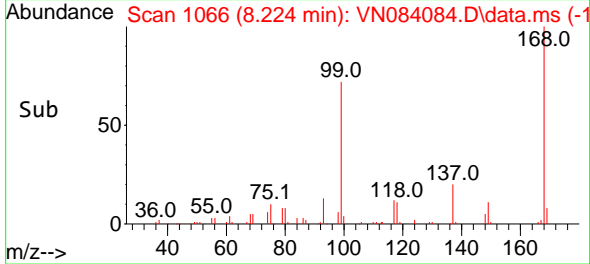
Tgt Ion:168 Resp: 147190
 Ion Ratio Lower Upper
 168 100
 99 71.8 54.2 81.2

Manual Integrations

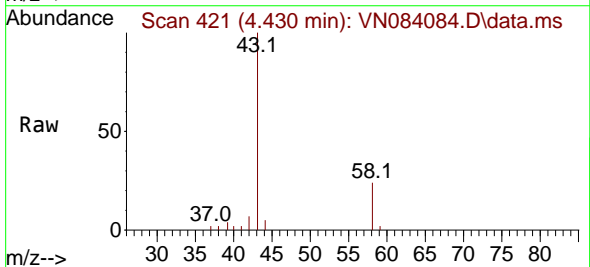
APPROVED

Reviewed By :John Carlone 09/23/2024

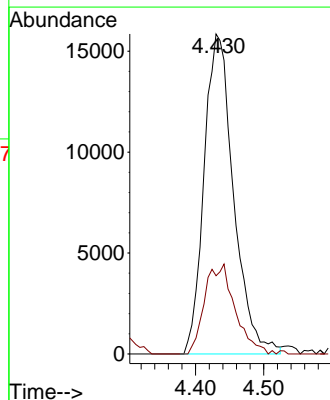
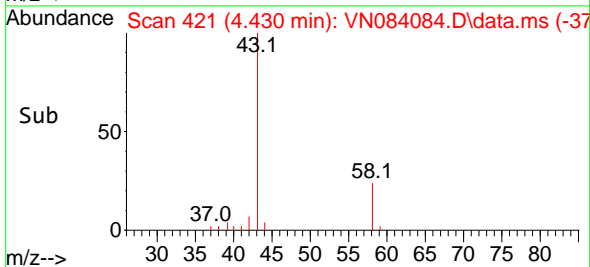
Supervised By :Mahesh Dadoda 09/23/2024

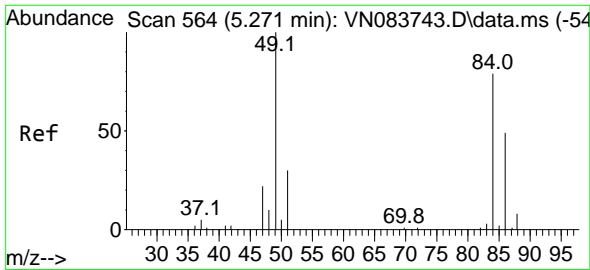


#16
 Acetone
 Concen: 53.589 ug/l
 RT: 4.430 min Scan# 421
 Delta R.T. 0.000 min
 Lab File: VN084084.D
 Acq: 21 Sep 2024 02:35



Tgt Ion: 43 Resp: 47679
 Ion Ratio Lower Upper
 43 100
 58 24.5 23.7 35.5





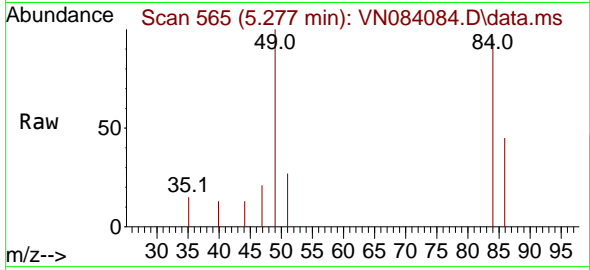
#20
 Methylene Chloride
 Concen: 2.967 ug/l
 RT: 5.277 min Scan# 501
 Delta R.T. 0.006 min
 Lab File: VN084084.D
 Acq: 21 Sep 2024 02:35

Instrument :

MSVOA_N

ClientSampleId :

PB163512TB



Tgt Ion: 84 Resp: 540

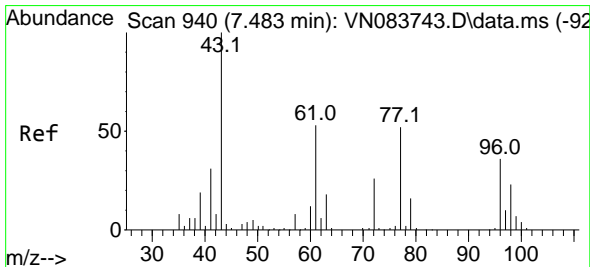
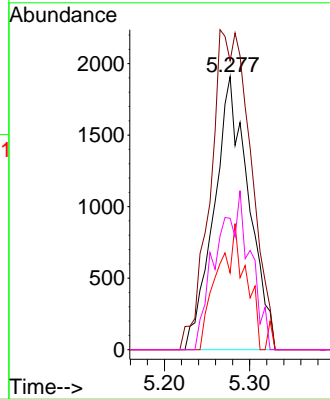
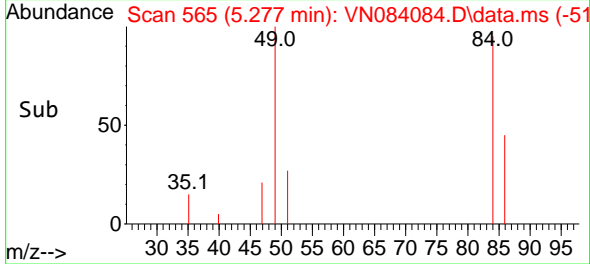
Ion	Ratio	Lower	Upper
84	100		
49	105.8	93.4	140.0
51	28.1	29.2	43.8
86	48.1	46.9	70.3

Manual Integrations

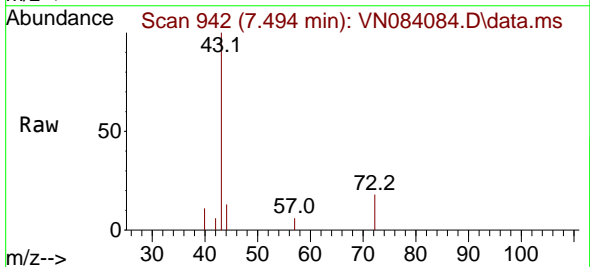
APPROVED

Reviewed By :John Carlone 09/23/2024

Supervised By :Mahesh Dadoda 09/23/2024

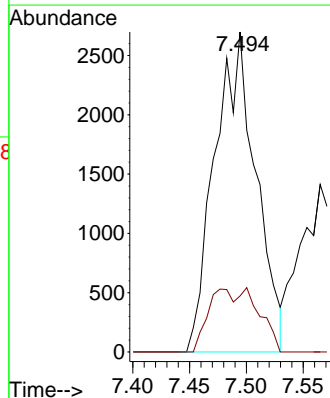
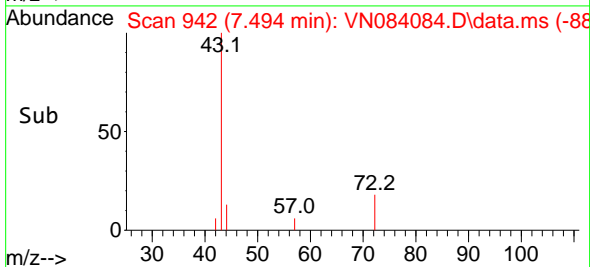


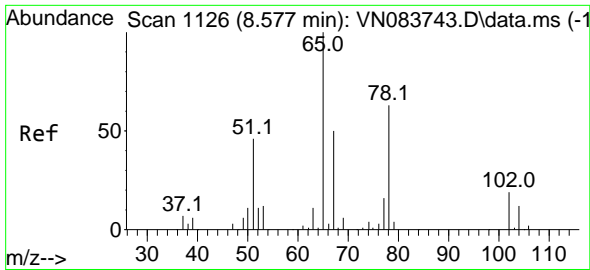
#25
 2-Butanone
 Concen: 5.816 ug/l
 RT: 7.494 min Scan# 942
 Delta R.T. 0.012 min
 Lab File: VN084084.D
 Acq: 21 Sep 2024 02:35



Tgt Ion: 43 Resp: 6801

Ion	Ratio	Lower	Upper
43	100		
72	17.5	20.8	31.2





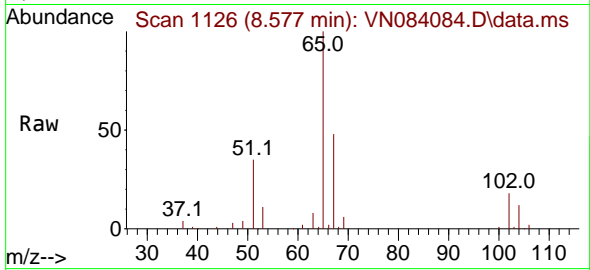
#33
 1,2-Dichloroethane-d4
 Concen: 54.536 ug/l
 RT: 8.577 min Scan# 1126
 Delta R.T. 0.000 min
 Lab File: VN084084.D
 Acq: 21 Sep 2024 02:35

Instrument :

MSVOA_N

ClientSampleId :

PB163512TB



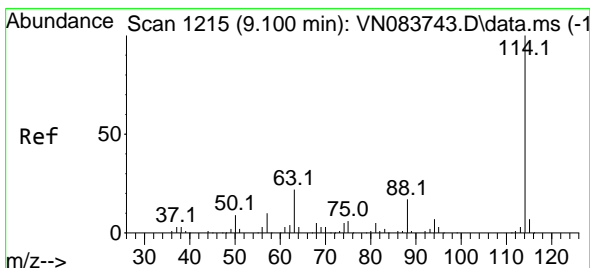
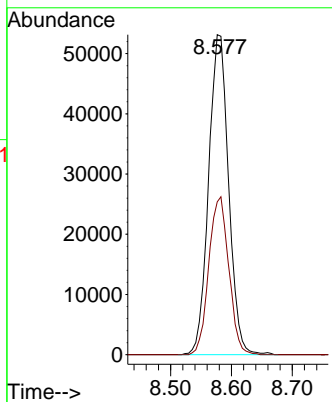
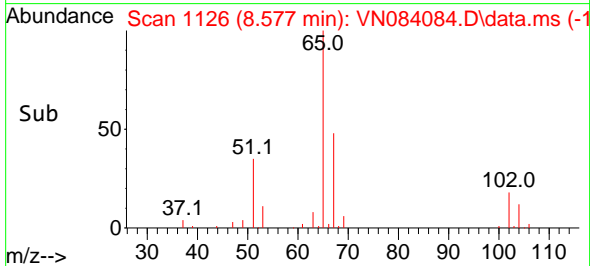
Tgt Ion: 65 Resp: 121039
 Ion Ratio Lower Upper
 65 100
 67 49.3 0.0 100.8

Manual Integrations

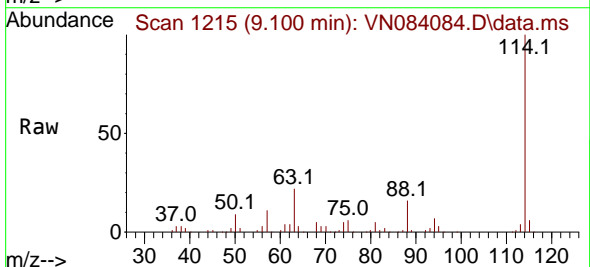
APPROVED

Reviewed By :John Carlone 09/23/2024

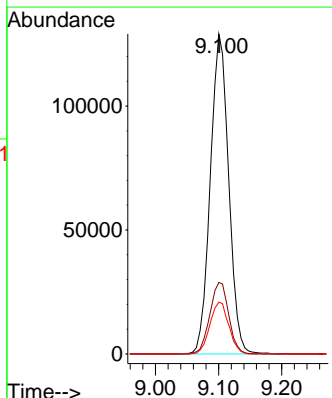
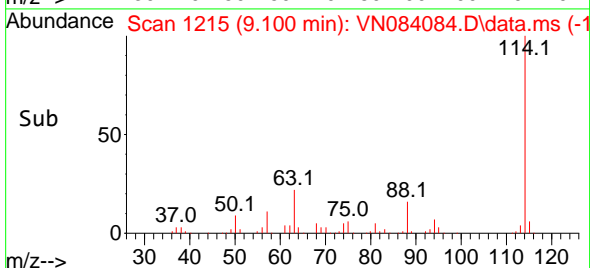
Supervised By :Mahesh Dadoda 09/23/2024

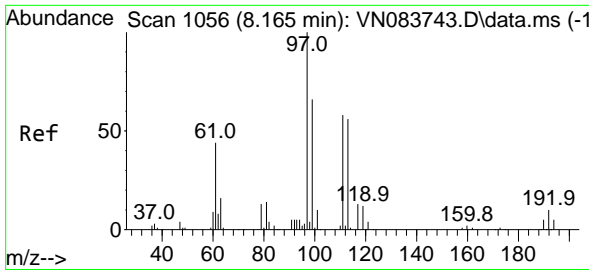


#34
 1,4-Difluorobenzene
 Concen: 50.000 ug/l
 RT: 9.100 min Scan# 1215
 Delta R.T. 0.000 min
 Lab File: VN084084.D
 Acq: 21 Sep 2024 02:35



Tgt Ion:114 Resp: 260342
 Ion Ratio Lower Upper
 114 100
 63 22.3 0.0 43.4
 88 16.2 0.0 32.6





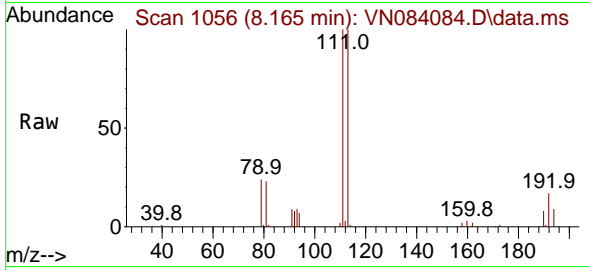
#35
 Dibromofluoromethane
 Concen: 49.881 ug/l
 RT: 8.165 min Scan# 1056
 Delta R.T. 0.000 min
 Lab File: VN084084.D
 Acq: 21 Sep 2024 02:35

Instrument :

MSVOA_N

Client Sample Id :

PB163512TB



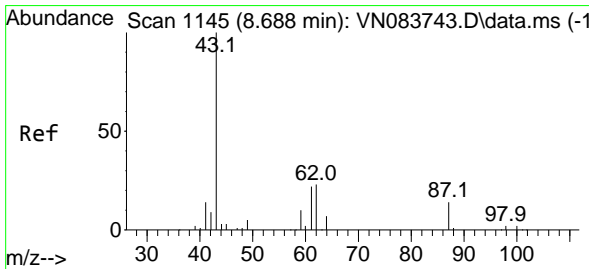
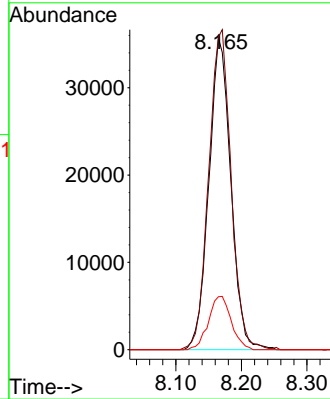
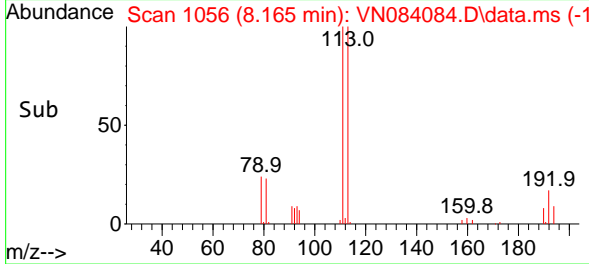
Tgt Ion: 113 Resp: 83130
 Ion Ratio Lower Upper
 113 100
 111 104.3 82.6 124.0
 192 17.7 14.3 21.5

Manual Integrations

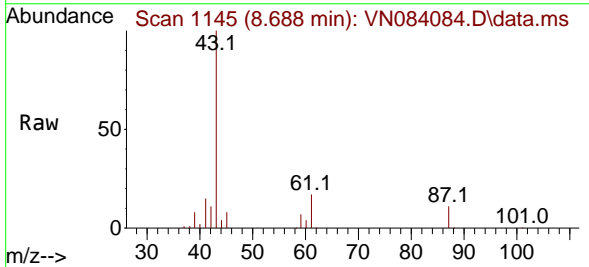
APPROVED

Reviewed By :John Carlone 09/23/2024

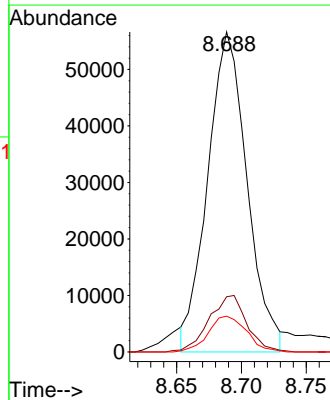
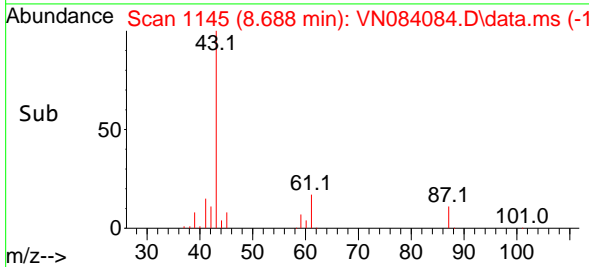
Supervised By :Mahesh Dadoda 09/23/2024

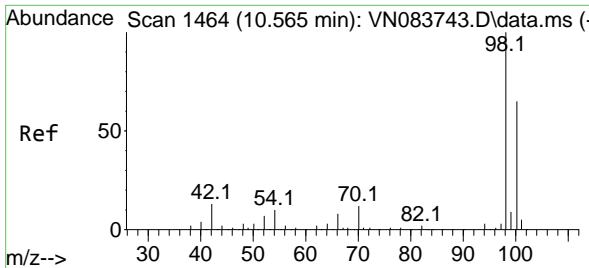


#43
 Isopropyl Acetate
 Concen: 28.991 ug/l m
 RT: 8.688 min Scan# 1145
 Delta R.T. 0.000 min
 Lab File: VN084084.D
 Acq: 21 Sep 2024 02:35



Tgt Ion: 43 Resp: 119625
 Ion Ratio Lower Upper
 43 100
 61 17.0 19.4 29.0#
 87 10.9 9.8 14.6





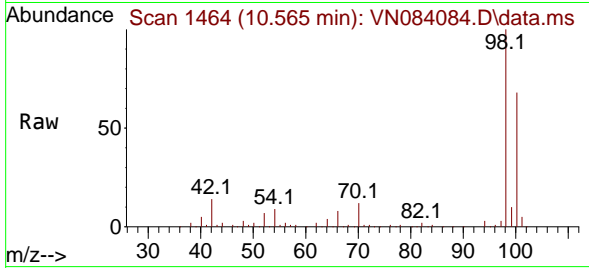
#50
 Toluene-d8
 Concen: 56.238 ug/l
 RT: 10.565 min Scan# 1464
 Delta R.T. 0.000 min
 Lab File: VN084084.D
 Acq: 21 Sep 2024 02:35

Instrument :

MSVOA_N

ClientSampleId :

PB163512TB

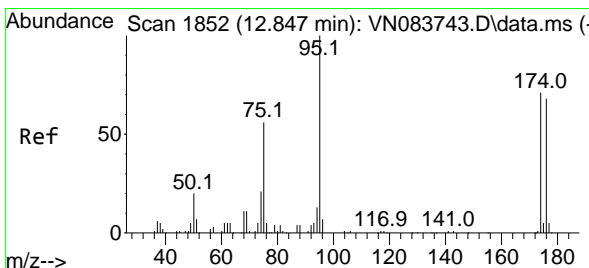
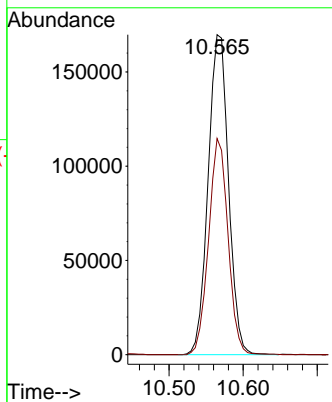
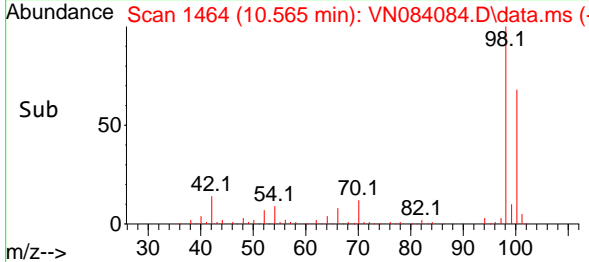


Tgt Ion: 98 Resp: 324030
 Ion Ratio Lower Upper
 98 100
 100 64.5 52.0 78.0

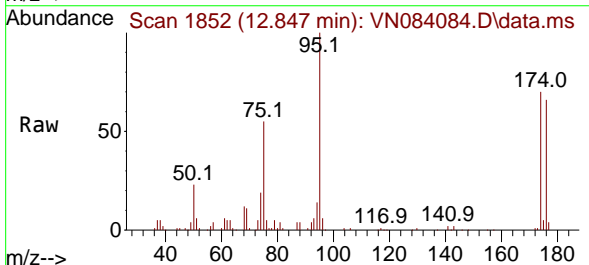
Manual Integrations

APPROVED

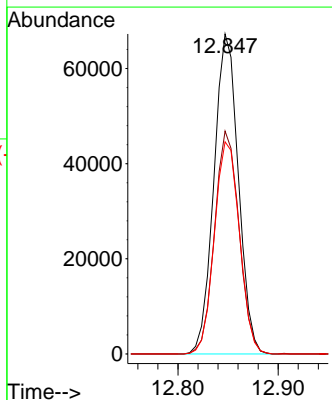
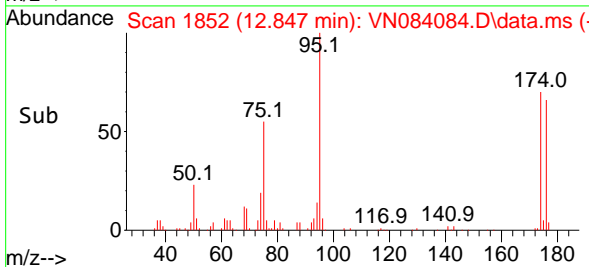
Reviewed By :John Carlone 09/23/2024
 Supervised By :Mahesh Dadoda 09/23/2024

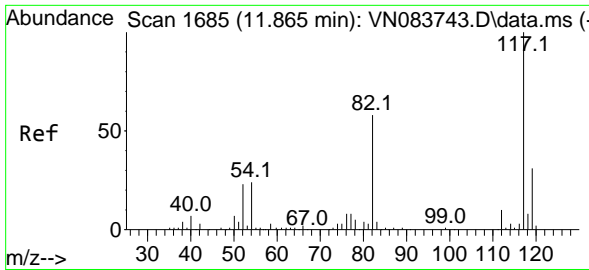


#62
 4-Bromofluorobenzene
 Concen: 47.862 ug/l
 RT: 12.847 min Scan# 1852
 Delta R.T. 0.000 min
 Lab File: VN084084.D
 Acq: 21 Sep 2024 02:35



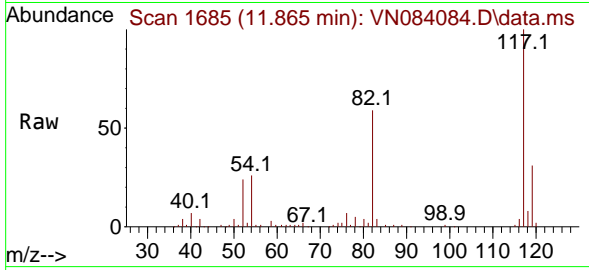
Tgt Ion: 95 Resp: 113777
 Ion Ratio Lower Upper
 95 100
 174 69.8 0.0 139.8
 176 68.2 0.0 131.4





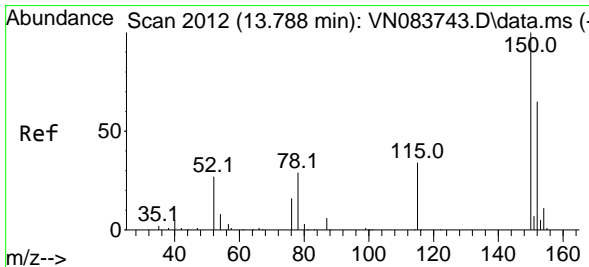
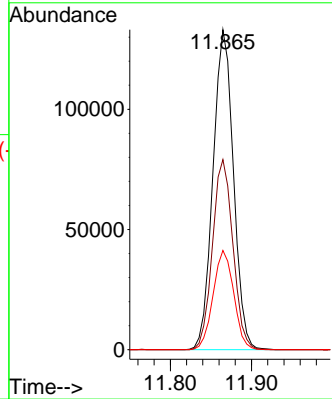
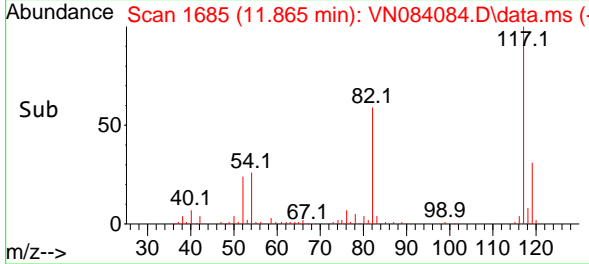
#63
 Chlorobenzene-d5
 Concen: 50.000 ug/l
 RT: 11.865 min Scan# 10
 Delta R.T. 0.000 min
 Lab File: VN084084.D
 Acq: 21 Sep 2024 02:35

Instrument :
 MSVOA_N
ClientSampleId :
 PB163512TB

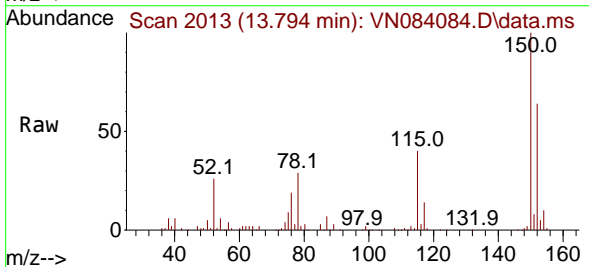


Tgt Ion:117 Resp: 23330
 Ion Ratio Lower Upper
 117 100
 82 59.4 47.4 71.0
 119 31.0 26.3 39.5

Manual Integrations
APPROVED
 Reviewed By :John Carlone 09/23/2024
 Supervised By :Mahesh Dadoda 09/23/2024



#72
 1,4-Dichlorobenzene-d4
 Concen: 50.000 ug/l
 RT: 13.794 min Scan# 2013
 Delta R.T. 0.006 min
 Lab File: VN084084.D
 Acq: 21 Sep 2024 02:35



Tgt Ion:152 Resp: 90947
 Ion Ratio Lower Upper
 152 100
 115 64.3 32.2 96.6
 150 157.8 0.0 348.6

