

Data Path : Z:\voasrv\HPCHEM1\MSVOA\_N\Data\VN092024\  
 Data File : VN084088.D  
 Acq On : 21 Sep 2024 04:11  
 Operator : JC\MD  
 Sample : P4103-11  
 Misc : 5.0mL/MSVOA\_N/WATER  
 ALS Vial : 37 Sample Multiplier: 1

Instrument :  
 MSVOA\_N  
 ClientSampleId :  
 WC-14-7.5-10A

Quant Time: Sep 21 05:25:34 2024  
 Quant Method : Z:\voasrv\HPCHEM1\MSVOA\_N\methods\82N091024W.M  
 Quant Title : SW846 8260  
 QLast Update : Wed Sep 11 15:18:56 2024  
 Response via : Initial Calibration

Manual Integrations  
 APPROVED

Reviewed By :John Carlone 09/23/2024  
 Supervised By :Mahesh Dadoda 09/23/2024

| Compound                    | R.T.   | QIon           | Response | Conc   | Units    | Dev(Min) |
|-----------------------------|--------|----------------|----------|--------|----------|----------|
| -----                       |        |                |          |        |          |          |
| Internal Standards          |        |                |          |        |          |          |
| 1) Pentafluorobenzene       | 8.230  | 168            | 166887   | 50.000 | ug/l     | 0.00     |
| 34) 1,4-Difluorobenzene     | 9.100  | 114            | 286118   | 50.000 | ug/l     | 0.00     |
| 63) Chlorobenzene-d5        | 11.865 | 117            | 245222   | 50.000 | ug/l     | 0.00     |
| 72) 1,4-Dichlorobenzene-d4  | 13.794 | 152            | 106447   | 50.000 | ug/l     | 0.00     |
| System Monitoring Compounds |        |                |          |        |          |          |
| 33) 1,2-Dichloroethane-d4   | 8.577  | 65             | 125998   | 50.070 | ug/l     | 0.00     |
| Spiked Amount               | 50.000 | Range 74 - 125 | Recovery | =      | 100.140% |          |
| 35) Dibromofluoromethane    | 8.165  | 113            | 92314    | 50.398 | ug/l     | 0.00     |
| Spiked Amount               | 50.000 | Range 75 - 124 | Recovery | =      | 100.800% |          |
| 50) Toluene-d8              | 10.565 | 98             | 349553   | 55.202 | ug/l     | 0.00     |
| Spiked Amount               | 50.000 | Range 86 - 113 | Recovery | =      | 110.400% |          |
| 62) 4-Bromofluorobenzene    | 12.847 | 95             | 125725   | 48.124 | ug/l     | 0.00     |
| Spiked Amount               | 50.000 | Range 77 - 121 | Recovery | =      | 96.240%  |          |
| Target Compounds            |        |                |          |        |          |          |
|                             |        |                |          |        |          | Qvalue   |
| 16) Acetone                 | 4.430  | 43             | 69446    | 68.842 | ug/l     | 99       |
| 20) Methylene Chloride      | 5.283  | 84             | 5037     | 2.440  | ug/l     | 96       |
| 25) 2-Butanone              | 7.494  | 43             | 24520    | 18.494 | ug/l #   | 87       |
| 31) Cyclohexane             | 8.253  | 56             | 12531    | 3.445  | ug/l     | 87       |
| 39) Methylcyclohexane       | 9.600  | 83             | 5302     | 1.690  | ug/l #   | 92       |
| 43) Isopropyl Acetate       | 8.688  | 43             | 115883m  | 25.554 | ug/l     |          |
| 52) Toluene                 | 10.629 | 92             | 12516    | 2.466  | ug/l     | 89       |
| 68) m/p-Xylenes             | 12.065 | 106            | 5412     | 1.506  | ug/l     | 94       |
| 73) Isopropylbenzene        | 12.694 | 105            | 27454    | 3.334  | ug/l     | 100      |
| 78) n-propylbenzene         | 13.035 | 91             | 47324    | 4.939  | ug/l     | 100      |
| 85) sec-Butylbenzene        | 13.617 | 105            | 23833    | 2.958  | ug/l     | 97       |
| 89) n-Butylbenzene          | 14.053 | 91             | 14130    | 2.330  | ug/l     | 97       |
| 95) Naphthalene             | 15.641 | 128            | 10963    | 1.860  | ug/l #   | 88       |

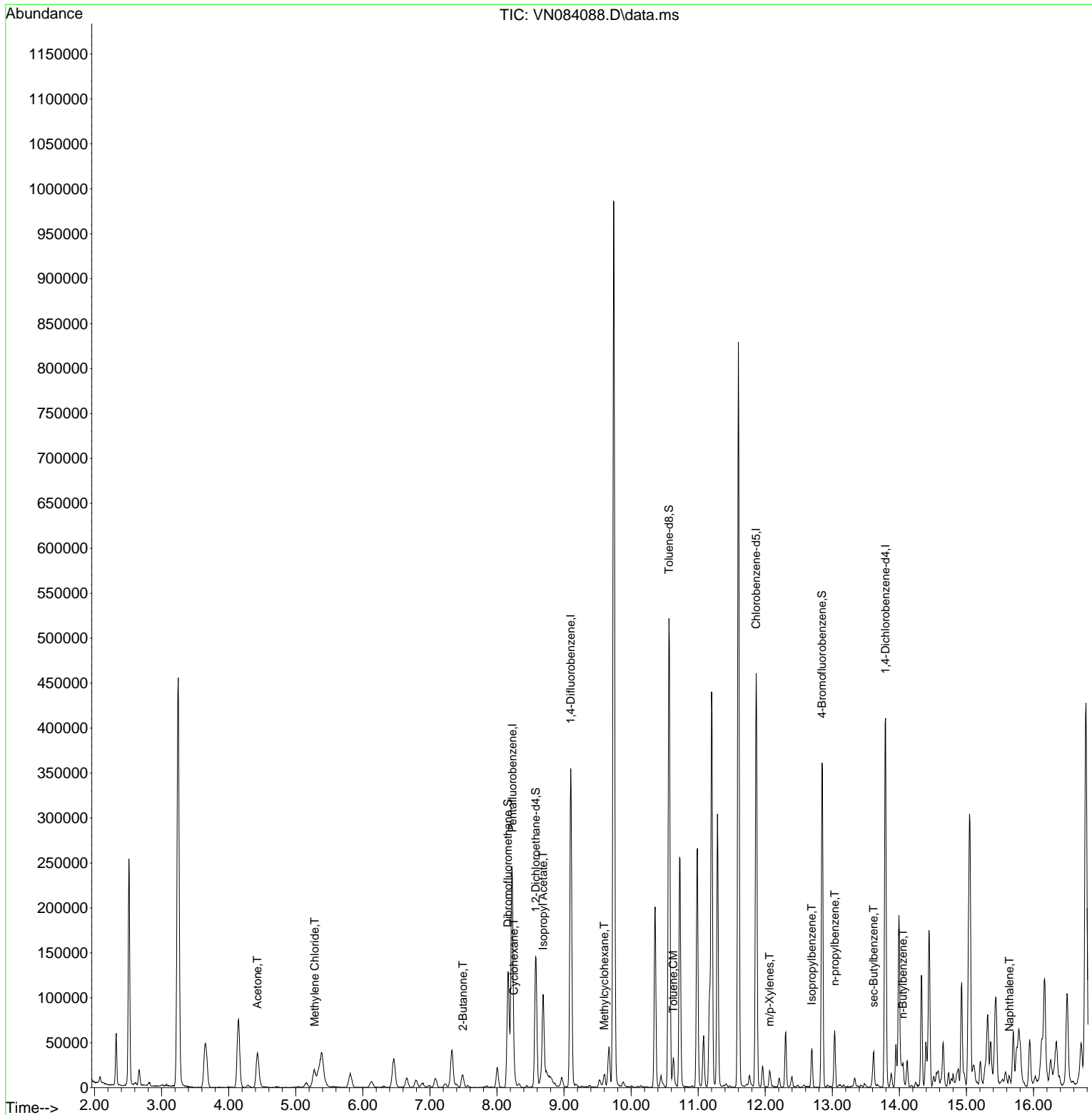
(#) = qualifier out of range (m) = manual integration (+) = signals summed

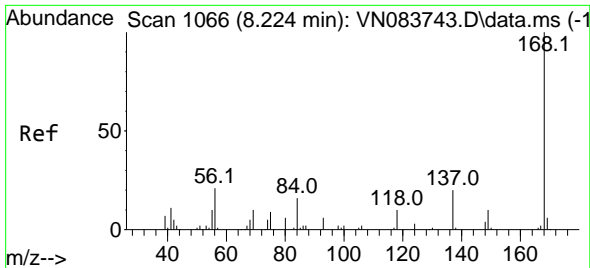
Data Path : Z:\voasrv\HPCHEM1\MSVOA\_N\Data\VN092024\  
 Data File : VN084088.D  
 Acq On : 21 Sep 2024 04:11  
 Operator : JC\MD  
 Sample : P4103-11  
 Misc : 5.0mL/MSVOA\_N/WATER  
 ALS Vial : 37 Sample Multiplier: 1

**Instrument :**  
 MSVOA\_N  
**ClientSampleId :**  
 WC-14-7.5-10A

Quant Time: Sep 21 05:25:34 2024  
 Quant Method : Z:\voasrv\HPCHEM1\MSVOA\_N\methods\82N091024W.M  
 Quant Title : SW846 8260  
 QLast Update : Wed Sep 11 15:18:56 2024  
 Response via : Initial Calibration

**Manual Integrations**  
**APPROVED**  
 Reviewed By :John Carlone 09/23/2024  
 Supervised By :Mahesh Dadoda 09/23/2024





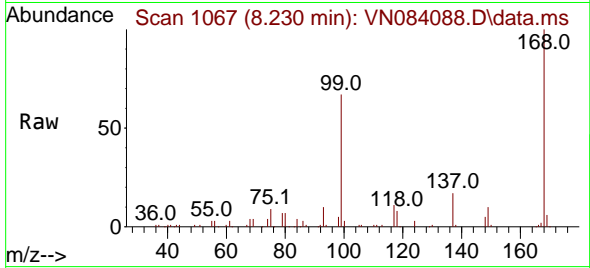
#1  
 Pentafluorobenzene  
 Concen: 50.000 ug/l  
 RT: 8.230 min Scan# 1066  
 Delta R.T. 0.006 min  
 Lab File: VN084088.D  
 Acq: 21 Sep 2024 04:11

Instrument :

MSVOA\_N

ClientSampleId :

WC-14-7.5-10A



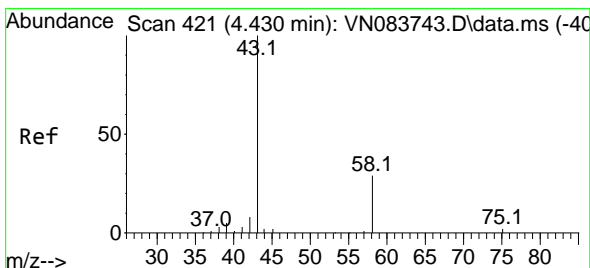
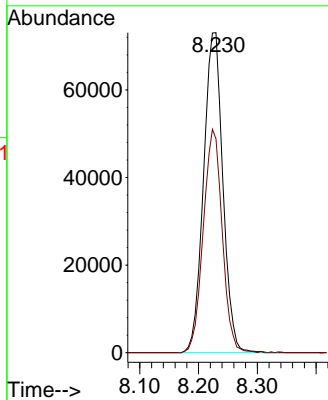
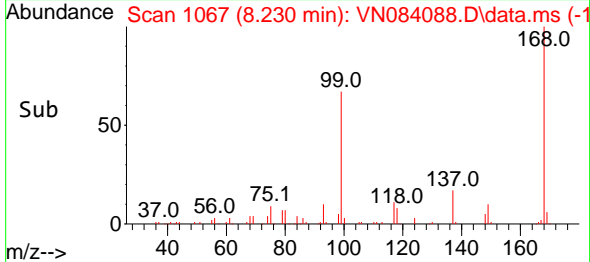
Tgt Ion:168 Resp: 16688  
 Ion Ratio Lower Upper  
 168 100  
 99 66.8 54.2 81.2

Manual Integrations

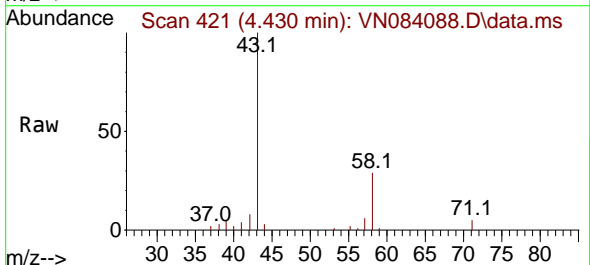
APPROVED

Reviewed By :John Carlone 09/23/2024

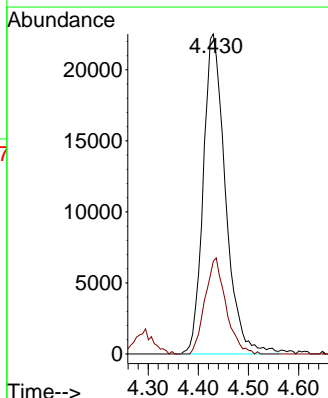
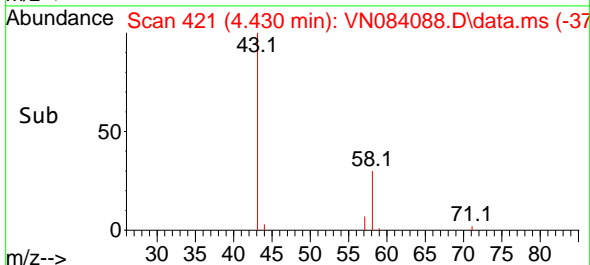
Supervised By :Mahesh Dadoda 09/23/2024

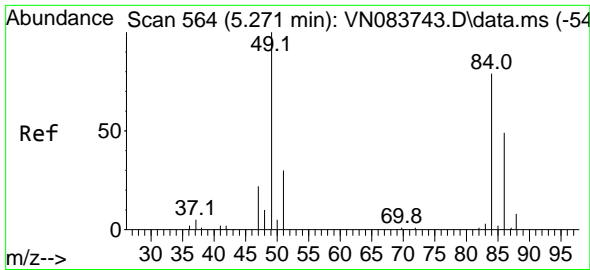


#16  
 Acetone  
 Concen: 68.842 ug/l  
 RT: 4.430 min Scan# 421  
 Delta R.T. -0.000 min  
 Lab File: VN084088.D  
 Acq: 21 Sep 2024 04:11



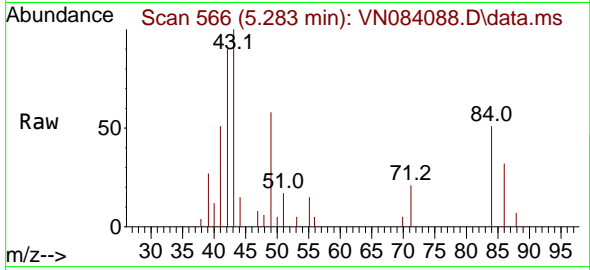
Tgt Ion: 43 Resp: 69446  
 Ion Ratio Lower Upper  
 43 100  
 58 29.0 23.7 35.5





#20  
 Methylene Chloride  
 Concen: 2.440 ug/l  
 RT: 5.283 min Scan# 501  
 Delta R.T. 0.012 min  
 Lab File: VN084088.D  
 Acq: 21 Sep 2024 04:11

Instrument : MSVOA\_N  
 Client Sample Id : WC-14-7.5-10A

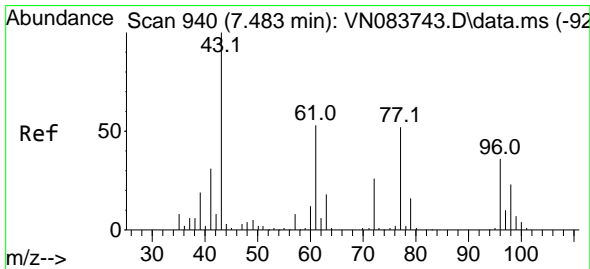
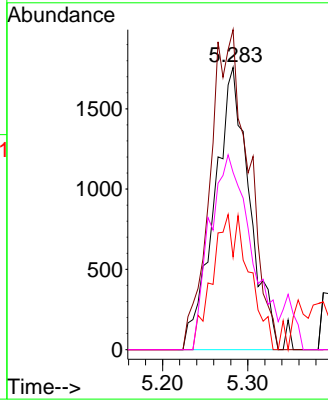
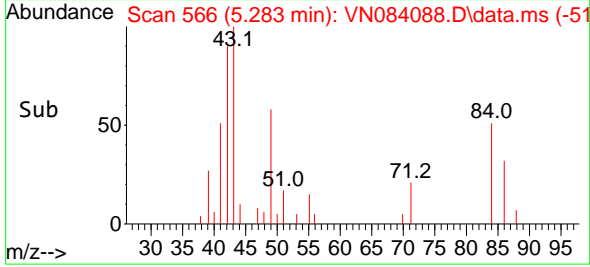


Tgt Ion: 84 Resp: 503

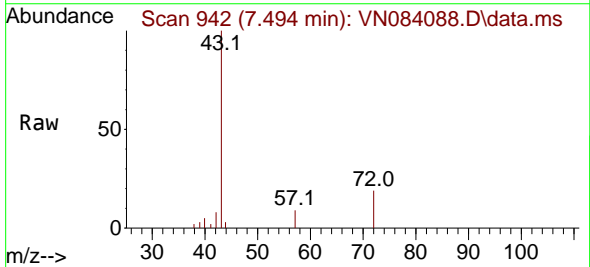
| Ion | Ratio | Lower | Upper |
|-----|-------|-------|-------|
| 84  | 100   |       |       |
| 49  | 113.4 | 93.4  | 140.0 |
| 51  | 32.9  | 29.2  | 43.8  |
| 86  | 62.8  | 46.9  | 70.3  |

Manual Integrations  
**APPROVED**

Reviewed By : John Carlone 09/23/2024  
 Supervised By : Mahesh Dadoda 09/23/2024

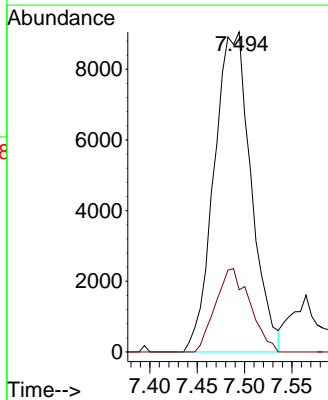
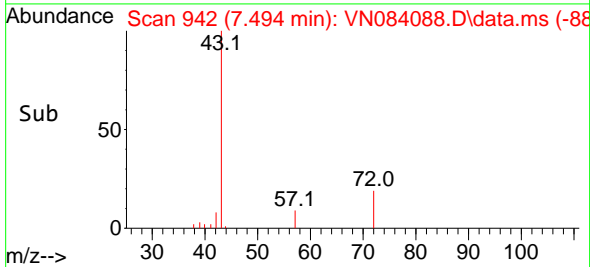


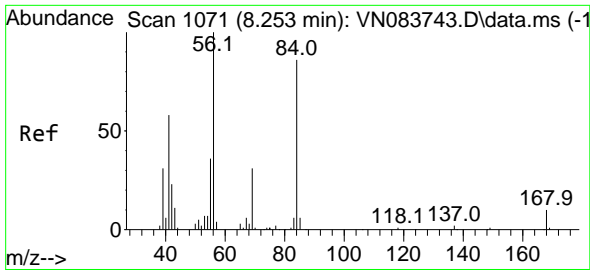
#25  
 2-Butanone  
 Concen: 18.494 ug/l  
 RT: 7.494 min Scan# 942  
 Delta R.T. 0.012 min  
 Lab File: VN084088.D  
 Acq: 21 Sep 2024 04:11



Tgt Ion: 43 Resp: 24520

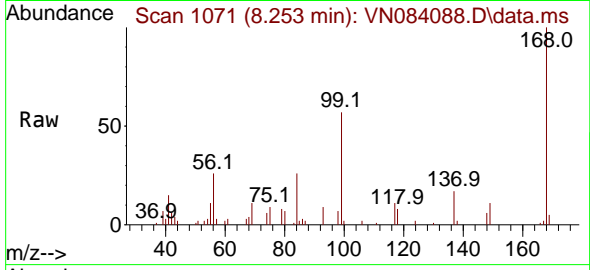
| Ion | Ratio | Lower | Upper |
|-----|-------|-------|-------|
| 43  | 100   |       |       |
| 72  | 19.4  | 20.8  | 31.2# |





#31  
 Cyclohexane  
 Concen: 3.445 ug/l  
 RT: 8.253 min Scan# 1071  
 Delta R.T. -0.000 min  
 Lab File: VN084088.D  
 Acq: 21 Sep 2024 04:11

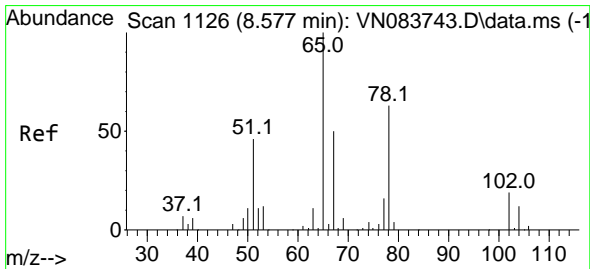
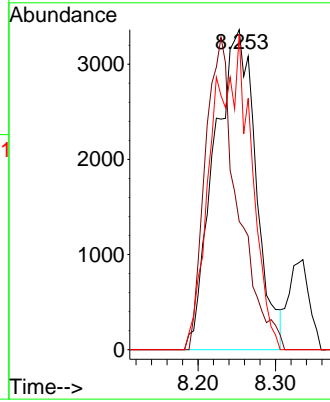
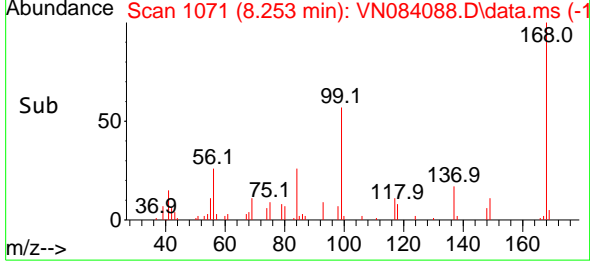
Instrument : MSVOA\_N  
 Client Sample Id : WC-14-7.5-10A



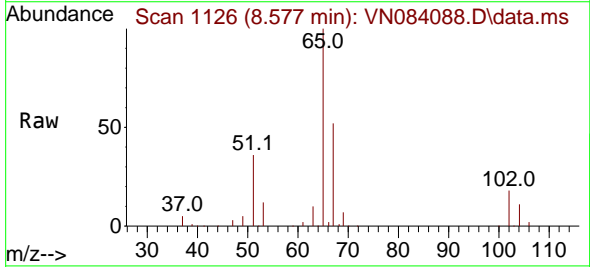
Tgt Ion: 56 Resp: 1253  
 Ion Ratio Lower Upper  
 56 100  
 69 40.1 26.9 40.3  
 84 98.6 69.2 103.8

Manual Integrations  
**APPROVED**

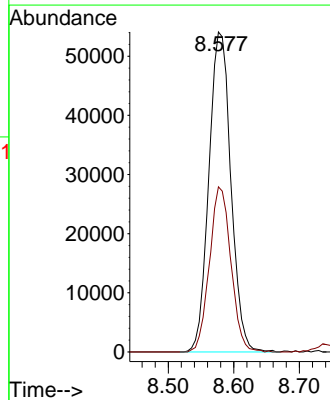
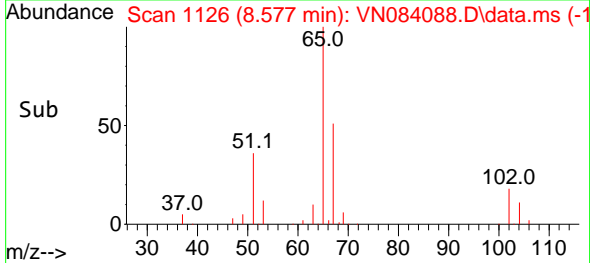
Reviewed By : John Carlone 09/23/2024  
 Supervised By : Mahesh Dadoda 09/23/2024

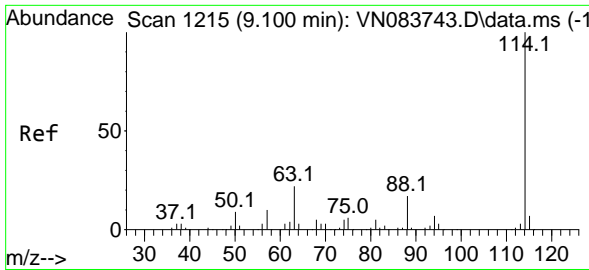


#33  
 1,2-Dichloroethane-d4  
 Concen: 50.070 ug/l  
 RT: 8.577 min Scan# 1126  
 Delta R.T. -0.000 min  
 Lab File: VN084088.D  
 Acq: 21 Sep 2024 04:11



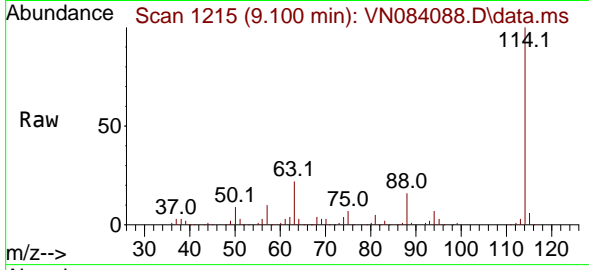
Tgt Ion: 65 Resp: 125998  
 Ion Ratio Lower Upper  
 65 100  
 67 50.3 0.0 100.8





#34  
 1,4-Difluorobenzene  
 Concen: 50.000 ug/l  
 RT: 9.100 min Scan# 111  
 Delta R.T. -0.000 min  
 Lab File: VN084088.D  
 Acq: 21 Sep 2024 04:11

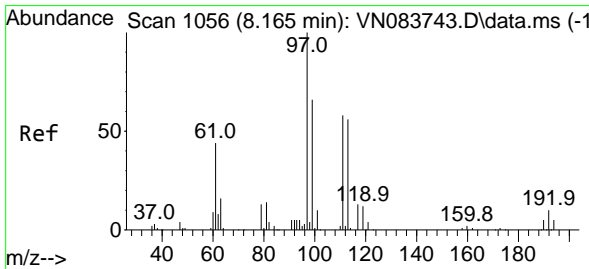
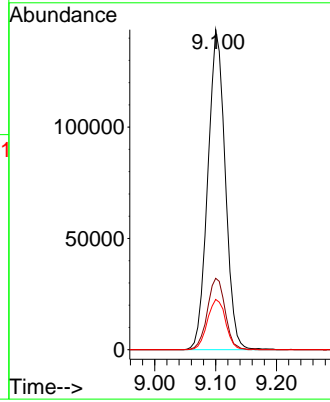
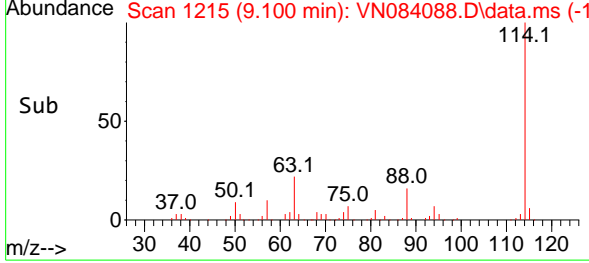
Instrument : MSVOA\_N  
 Client Sample Id : WC-14-7.5-10A



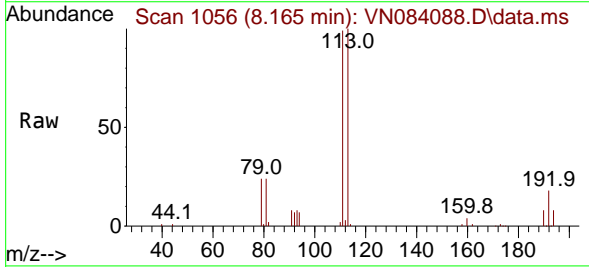
Tgt Ion:114 Resp: 286118  
 Ion Ratio Lower Upper  
 114 100  
 63 22.3 0.0 43.4  
 88 15.7 0.0 32.6

Manual Integrations  
**APPROVED**

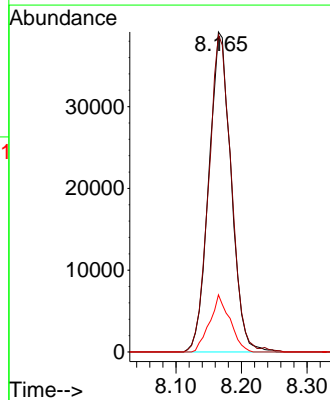
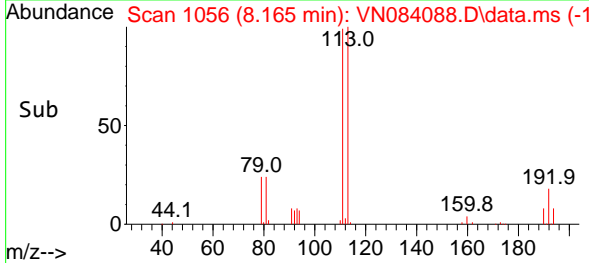
Reviewed By :John Carlone 09/23/2024  
 Supervised By :Mahesh Dadoda 09/23/2024

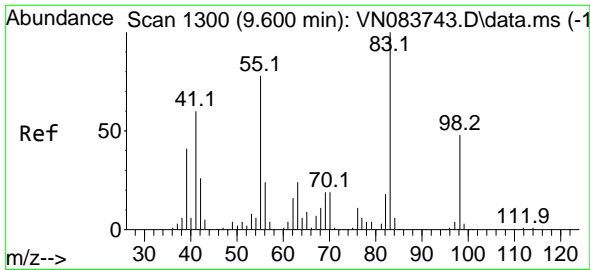


#35  
 Dibromofluoromethane  
 Concen: 50.398 ug/l  
 RT: 8.165 min Scan# 1056  
 Delta R.T. -0.000 min  
 Lab File: VN084088.D  
 Acq: 21 Sep 2024 04:11



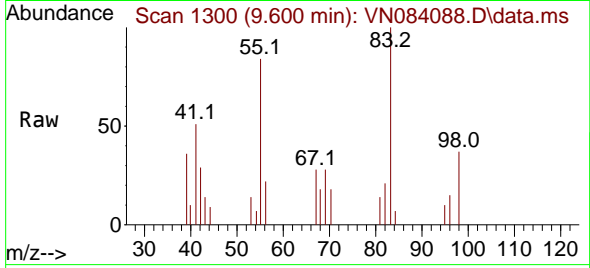
Tgt Ion:113 Resp: 92314  
 Ion Ratio Lower Upper  
 113 100  
 111 100.5 82.6 124.0  
 192 16.2 14.3 21.5





#39  
 Methylcyclohexane  
 Concen: 1.690 ug/l  
 RT: 9.600 min Scan# 1111  
 Delta R.T. -0.000 min  
 Lab File: VN084088.D  
 Acq: 21 Sep 2024 04:11

Instrument : MSVOA\_N  
 Client Sample Id : WC-14-7.5-10A

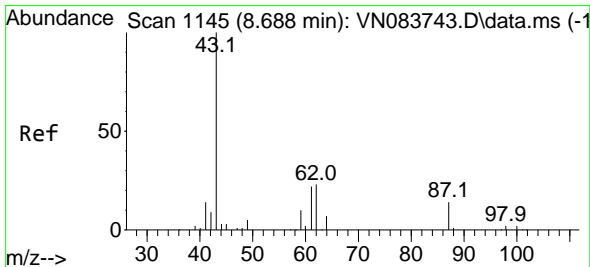
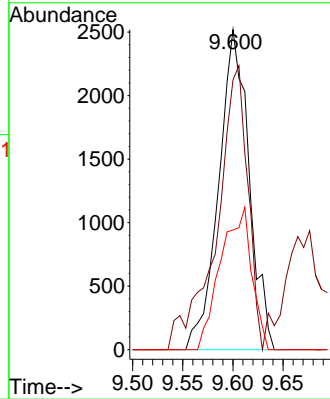
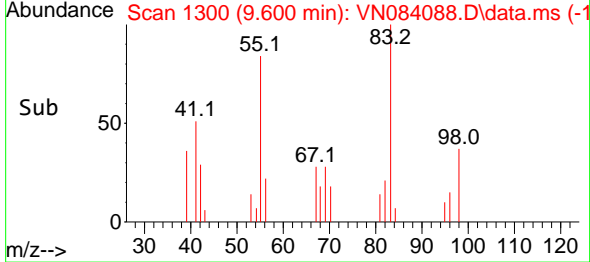


Tgt Ion: 83 Resp: 530

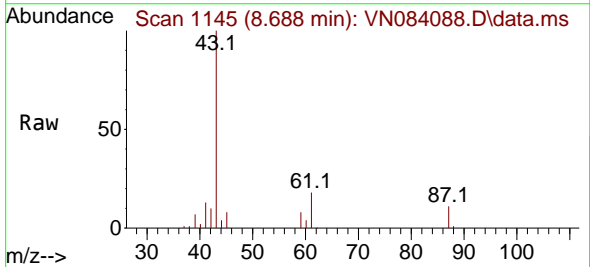
| Ion | Ratio | Lower | Upper |
|-----|-------|-------|-------|
| 83  | 100   |       |       |
| 55  | 73.6  | 62.2  | 93.4  |
| 98  | 37.4  | 37.6  | 56.4  |

Manual Integrations  
**APPROVED**

Reviewed By :John Carlone 09/23/2024  
 Supervised By :Mahesh Dadoda 09/23/2024

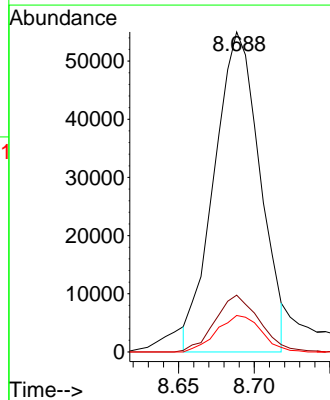
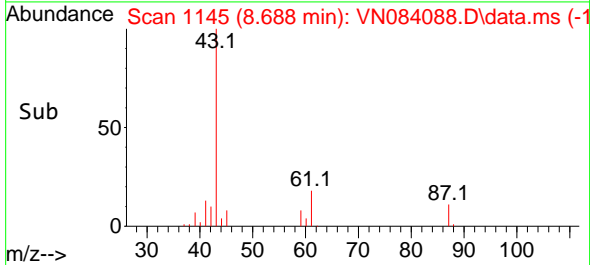


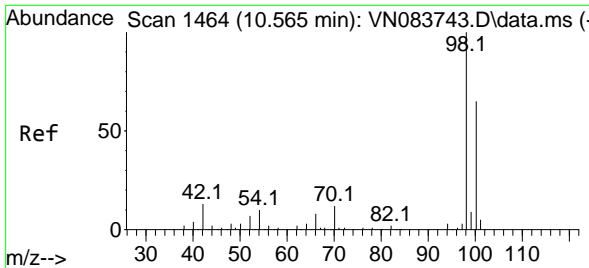
#43  
 Isopropyl Acetate  
 Concen: 25.554 ug/l m  
 RT: 8.688 min Scan# 1145  
 Delta R.T. -0.000 min  
 Lab File: VN084088.D  
 Acq: 21 Sep 2024 04:11



Tgt Ion: 43 Resp: 115883

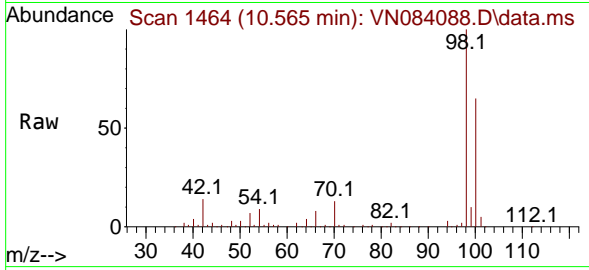
| Ion | Ratio | Lower | Upper |
|-----|-------|-------|-------|
| 43  | 100   |       |       |
| 61  | 17.2  | 19.4  | 29.0  |
| 87  | 11.1  | 9.8   | 14.6  |





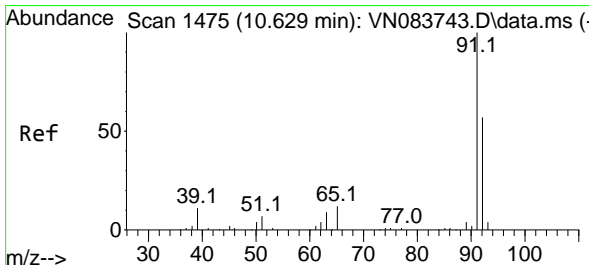
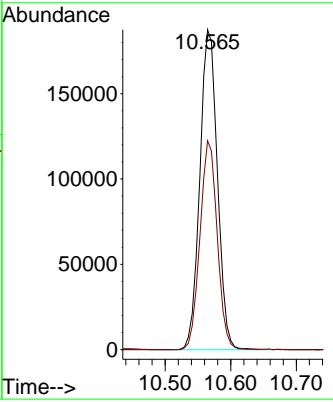
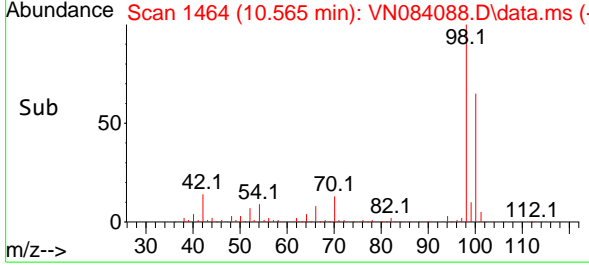
#50  
 Toluene-d8  
 Concen: 55.202 ug/l  
 RT: 10.565 min Scan# 1464  
 Delta R.T. -0.000 min  
 Lab File: VN084088.D  
 Acq: 21 Sep 2024 04:11

**Instrument :**  
 MSVOA\_N  
**ClientSampleId :**  
 WC-14-7.5-10A

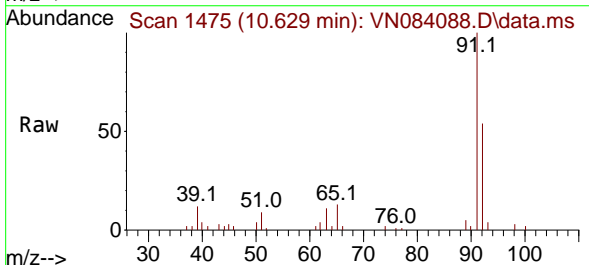


Tgt Ion: 98 Resp: 34955  
 Ion Ratio Lower Upper  
 98 100  
 100 64.1 52.0 78.0

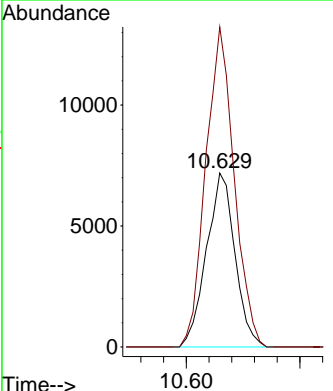
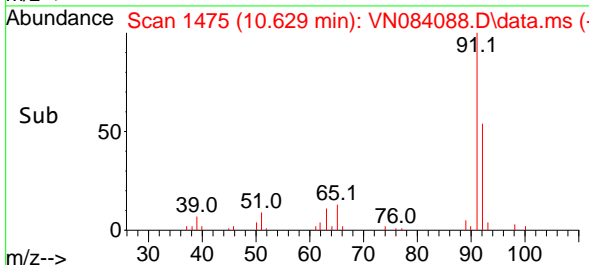
**Manual Integrations**  
**APPROVED**  
 Reviewed By :John Carlone 09/23/2024  
 Supervised By :Mahesh Dadoda 09/23/2024



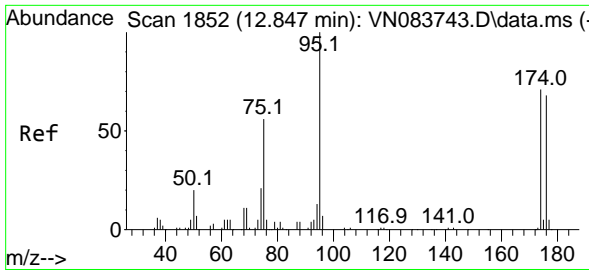
#52  
 Toluene  
 Concen: 2.466 ug/l  
 RT: 10.629 min Scan# 1475  
 Delta R.T. -0.000 min  
 Lab File: VN084088.D  
 Acq: 21 Sep 2024 04:11



Tgt Ion: 92 Resp: 12516  
 Ion Ratio Lower Upper  
 92 100  
 91 183.3 134.7 202.1







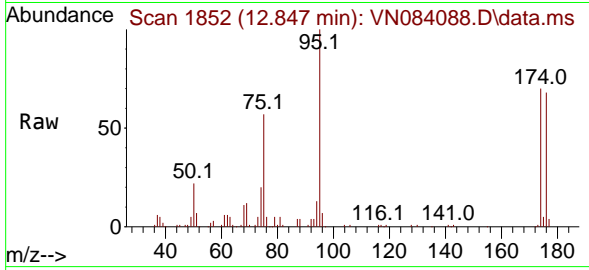
#62  
 4-Bromofluorobenzene  
 Concen: 48.124 ug/l  
 RT: 12.847 min Scan# 1852  
 Delta R.T. -0.000 min  
 Lab File: VN084088.D  
 Acq: 21 Sep 2024 04:11

Instrument :

MSVOA\_N

ClientSampleId :

WC-14-7.5-10A



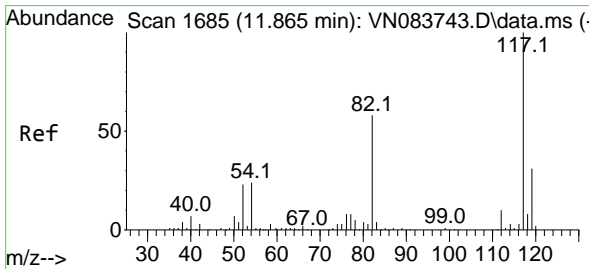
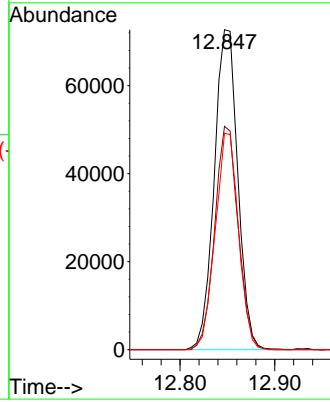
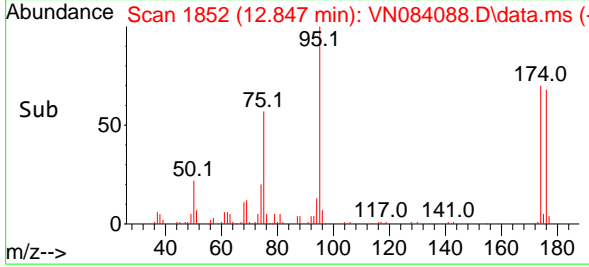
Tgt Ion: 95 Resp: 125722  
 Ion Ratio Lower Upper  
 95 100  
 174 69.7 0.0 139.8  
 176 66.9 0.0 131.4

Manual Integrations

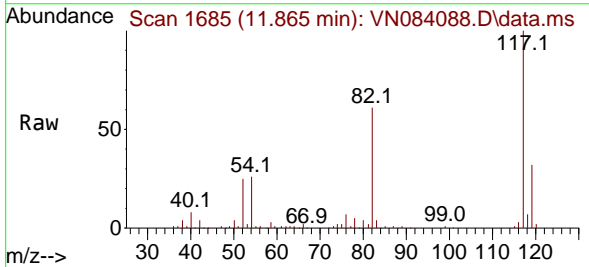
APPROVED

Reviewed By :John Carlone 09/23/2024

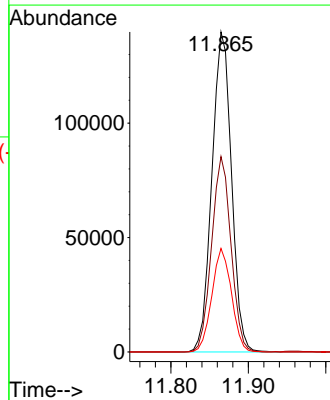
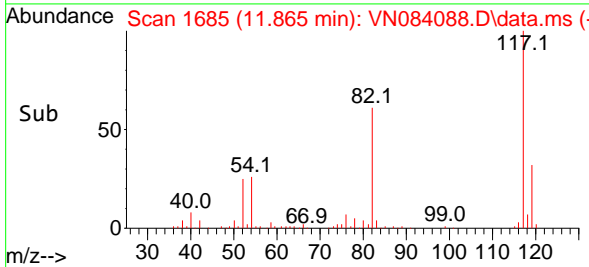
Supervised By :Mahesh Dadoda 09/23/2024

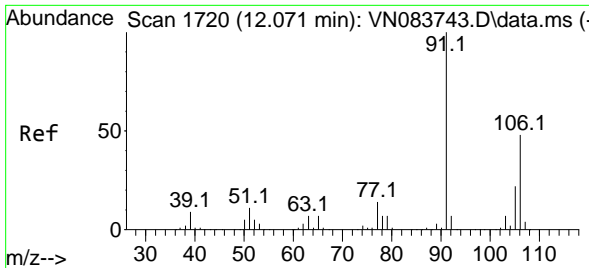


#63  
 Chlorobenzene-d5  
 Concen: 50.000 ug/l  
 RT: 11.865 min Scan# 1685  
 Delta R.T. -0.000 min  
 Lab File: VN084088.D  
 Acq: 21 Sep 2024 04:11



Tgt Ion:117 Resp: 245222  
 Ion Ratio Lower Upper  
 117 100  
 82 61.1 47.4 71.0  
 119 32.3 26.3 39.5





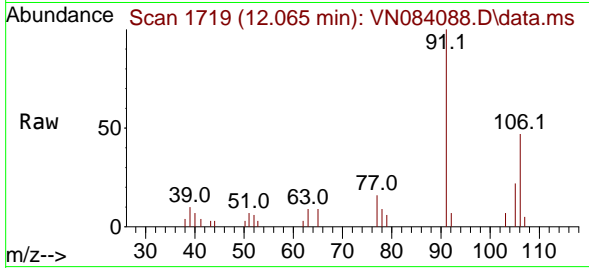
#68  
 m/p-Xylenes  
 Concen: 1.506 ug/l  
 RT: 12.065 min Scan# 11  
 Delta R.T. -0.006 min  
 Lab File: VN084088.D  
 Acq: 21 Sep 2024 04:11

Instrument :

MSVOA\_N

ClientSampleId :

WC-14-7.5-10A



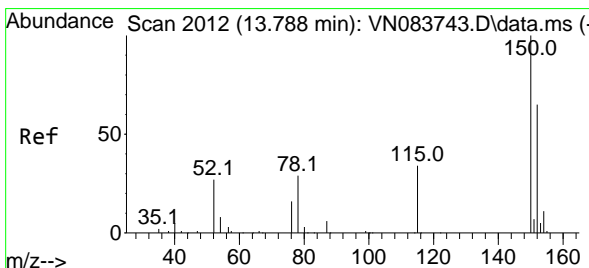
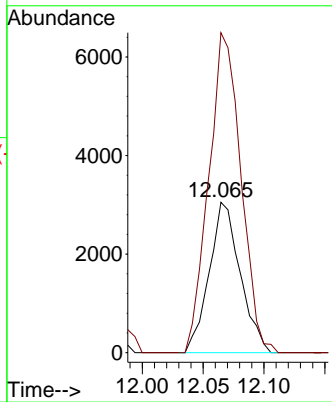
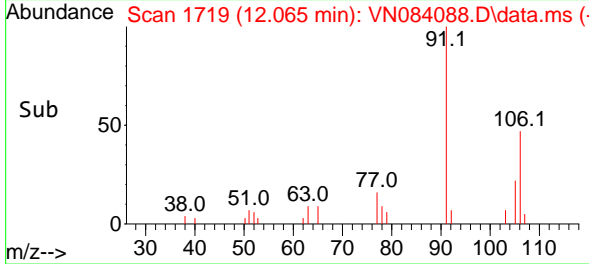
Tgt Ion:106 Resp: 541  
 Ion Ratio Lower Upper  
 106 100  
 91 220.8 169.2 253.8

Manual Integrations

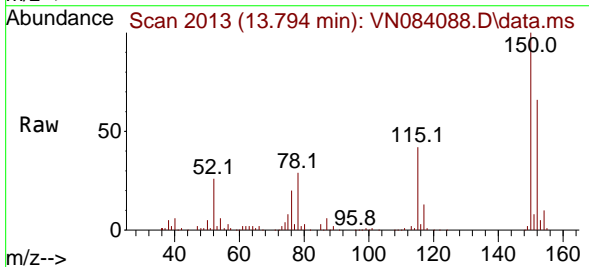
APPROVED

Reviewed By :John Carlone 09/23/2024

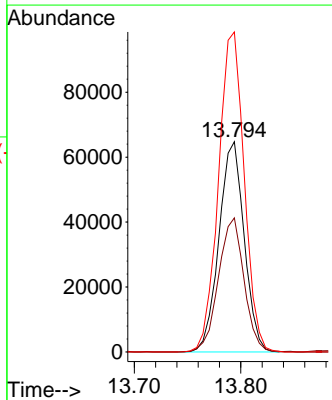
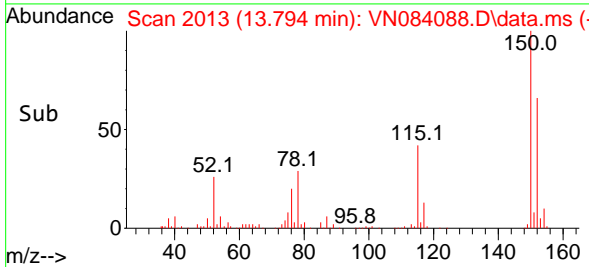
Supervised By :Mahesh Dadoda 09/23/2024

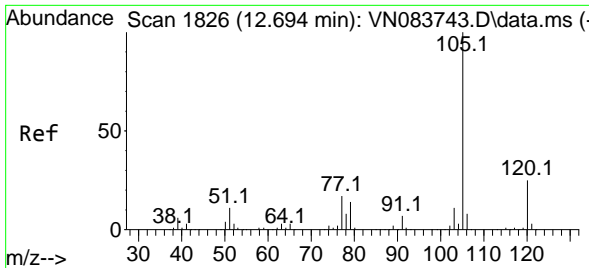


#72  
 1,4-Dichlorobenzene-d4  
 Concen: 50.000 ug/l  
 RT: 13.794 min Scan# 2013  
 Delta R.T. 0.006 min  
 Lab File: VN084088.D  
 Acq: 21 Sep 2024 04:11



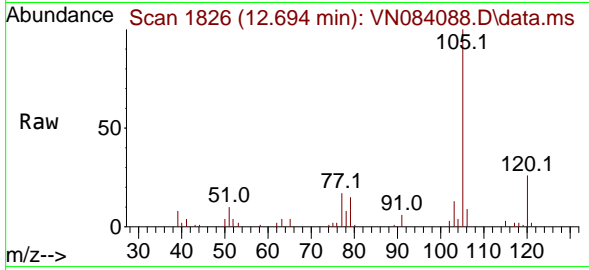
Tgt Ion:152 Resp: 106447  
 Ion Ratio Lower Upper  
 152 100  
 115 64.6 32.2 96.6  
 150 155.2 0.0 348.6





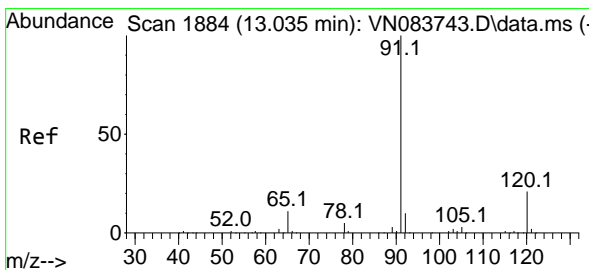
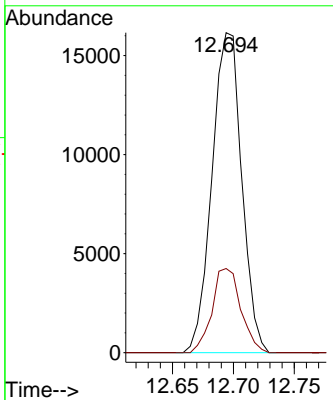
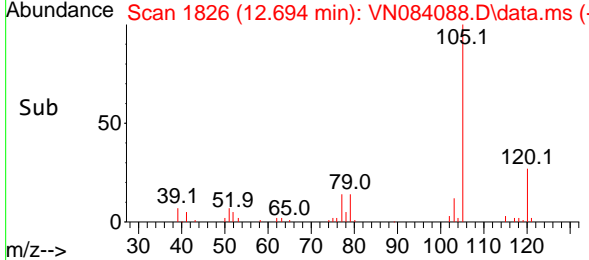
#73  
 Isopropylbenzene  
 Concen: 3.334 ug/l  
 RT: 12.694 min Scan# 1826  
 Delta R.T. -0.000 min  
 Lab File: VN084088.D  
 Acq: 21 Sep 2024 04:11

Instrument : MSVOA\_N  
 Client Sample Id : WC-14-7.5-10A

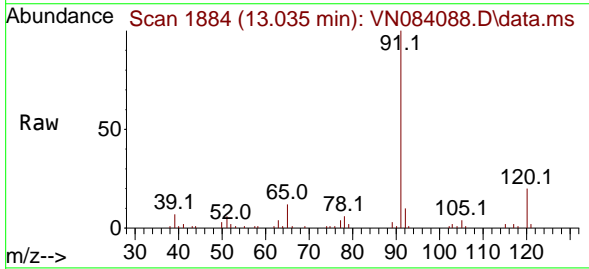


Tgt Ion: 105 Resp: 2745  
 Ion Ratio Lower Upper  
 105 100  
 120 25.4 12.6 37.8

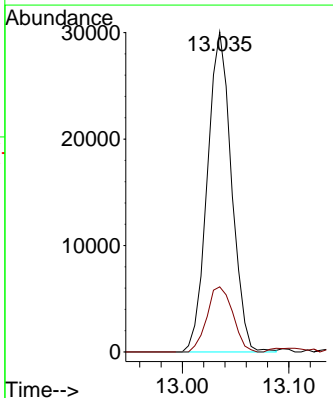
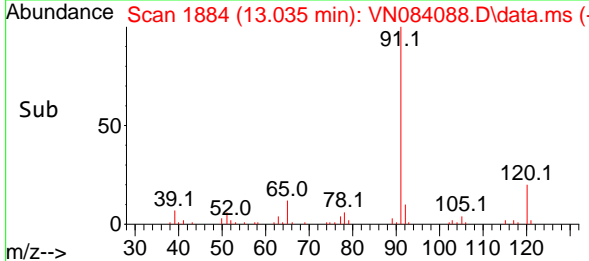
Manual Integrations  
**APPROVED**  
 Reviewed By : John Carlone 09/23/2024  
 Supervised By : Mahesh Dadoda 09/23/2024

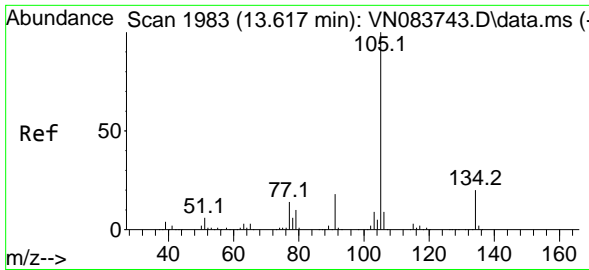


#78  
 n-propylbenzene  
 Concen: 4.939 ug/l  
 RT: 13.035 min Scan# 1884  
 Delta R.T. -0.000 min  
 Lab File: VN084088.D  
 Acq: 21 Sep 2024 04:11



Tgt Ion: 91 Resp: 47324  
 Ion Ratio Lower Upper  
 91 100  
 120 21.8 11.0 33.0





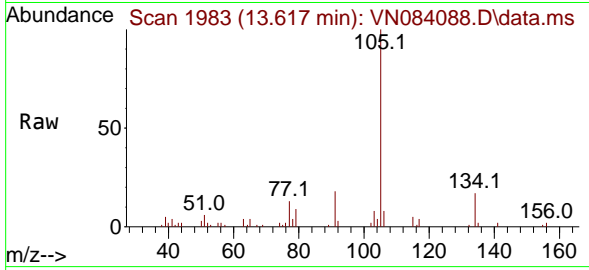
#85  
 sec-Butylbenzene  
 Concen: 2.958 ug/l  
 RT: 13.617 min Scan# 1983  
 Delta R.T. -0.000 min  
 Lab File: VN084088.D  
 Acq: 21 Sep 2024 04:11

Instrument :

MSVOA\_N

ClientSampleId :

WC-14-7.5-10A



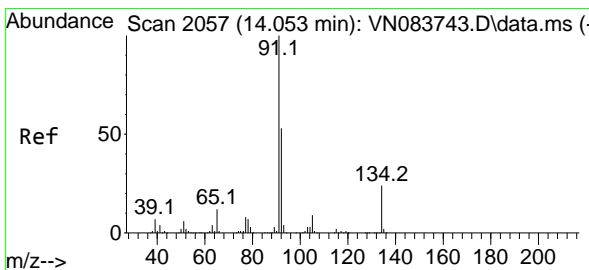
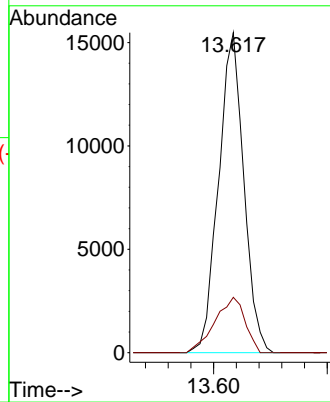
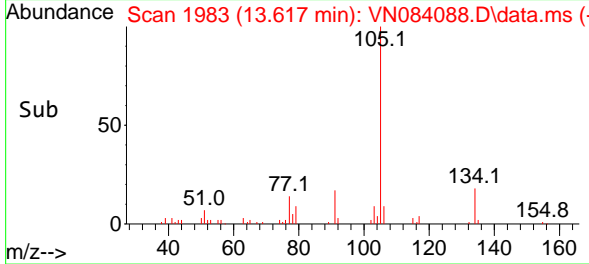
Tgt Ion: 105 Resp: 2383  
 Ion Ratio Lower Upper  
 105 100  
 134 20.7 9.7 29.1

Manual Integrations

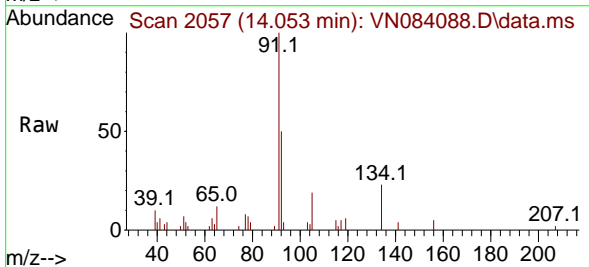
APPROVED

Reviewed By : John Carlone 09/23/2024

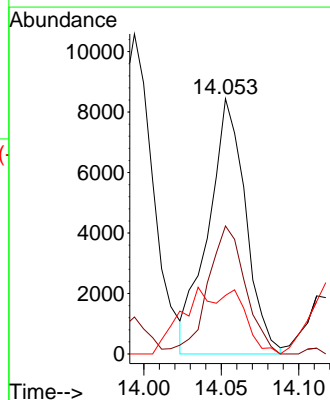
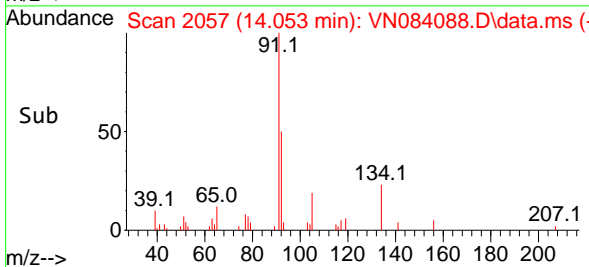
Supervised By : Mahesh Dadoda 09/23/2024

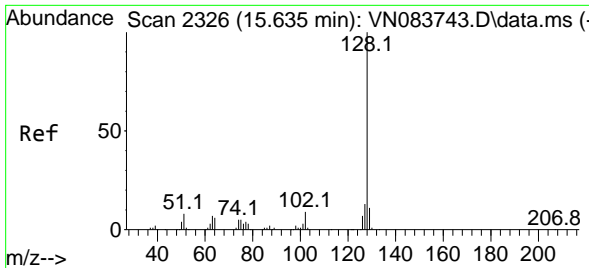


#89  
 n-Butylbenzene  
 Concen: 2.330 ug/l  
 RT: 14.053 min Scan# 2057  
 Delta R.T. -0.000 min  
 Lab File: VN084088.D  
 Acq: 21 Sep 2024 04:11



Tgt Ion: 91 Resp: 14130  
 Ion Ratio Lower Upper  
 91 100  
 92 50.2 26.7 80.1  
 134 24.2 12.2 36.4





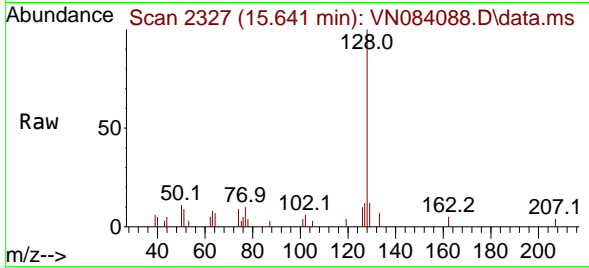
#95  
 Naphthalene  
 Concen: 1.860 ug/l  
 RT: 15.641 min Scan# 21  
 Delta R.T. 0.006 min  
 Lab File: VN084088.D  
 Acq: 21 Sep 2024 04:11

Instrument :

MSVOA\_N

ClientSampleId :

WC-14-7.5-10A



Tgt Ion:128 Resp: 1096  
 Ion Ratio Lower Upper  
 128 100  
 127 11.3 10.2 15.2  
 129 2.9 8.7 13.1

Manual Integrations

APPROVED

Reviewed By :John Carlone 09/23/2024

Supervised By :Mahesh Dadoda 09/23/2024

