

Data Path : Z:\VOASRV\HPCHEM1\MSVOA N\DATA\VN092120\  
 Data File : VN063493.D  
 Acq On : 21 Sep 2020 18:08  
 Operator : JC/MD  
 Sample : L4057-01  
 Misc : 1.10µ/10mL/100uL/5.00mL/MSVOA\_N/MEOH  
 ALS Vial : 20 Sample Multiplier: 1

Instrument :  
 MSVOA\_N  
 ClientSampleId :  
 JA-DRUM-COMPME

Quant Time: Sep 22 02:26:50 2020  
 Quant Method : Z:\VOASRV\HPCHEM1\MSVOA\_N\METHODS\82N091620W.M  
 Quant Title : SW846 8260  
 QLast Update : Wed Sep 16 13:05:20 2020  
 Response via : Initial Calibration

Internal Standards	R.T.	QIon	Response	Conc	Units	Dev(Min)
1) Pentafluorobenzene	7.62	168	245353	50.00	µg/l	0.00
34) 1,4-Difluorobenzene	8.55	114	458042	50.00	µg/l	0.00
63) Chlorobenzene-d5	11.38	117	450208	50.00	µg/l	0.00
72) 1,4-Dichlorobenzene-d4	13.32	152	200782	50.00	µg/l	0.00

## System Monitoring Compounds

33) 1,2-Dichloroethane-d4	7.98	65	195179	46.73	µg/l	0.00
Spiked Amount	50.000		Recovery	=	93.46%	
35) Dibromofluoromethane	7.55	113	138334	43.63	µg/l	0.00
Spiked Amount	50.000		Recovery	=	87.26%	
50) Toluene-d8	10.06	98	580388	48.68	µg/l	0.00
Spiked Amount	50.000		Recovery	=	97.36%	
62) 4-Bromofluorobenzene	12.38	95	228166	52.20	µg/l	0.00
Spiked Amount	50.000		Recovery	=	104.40%	

## Target Compounds

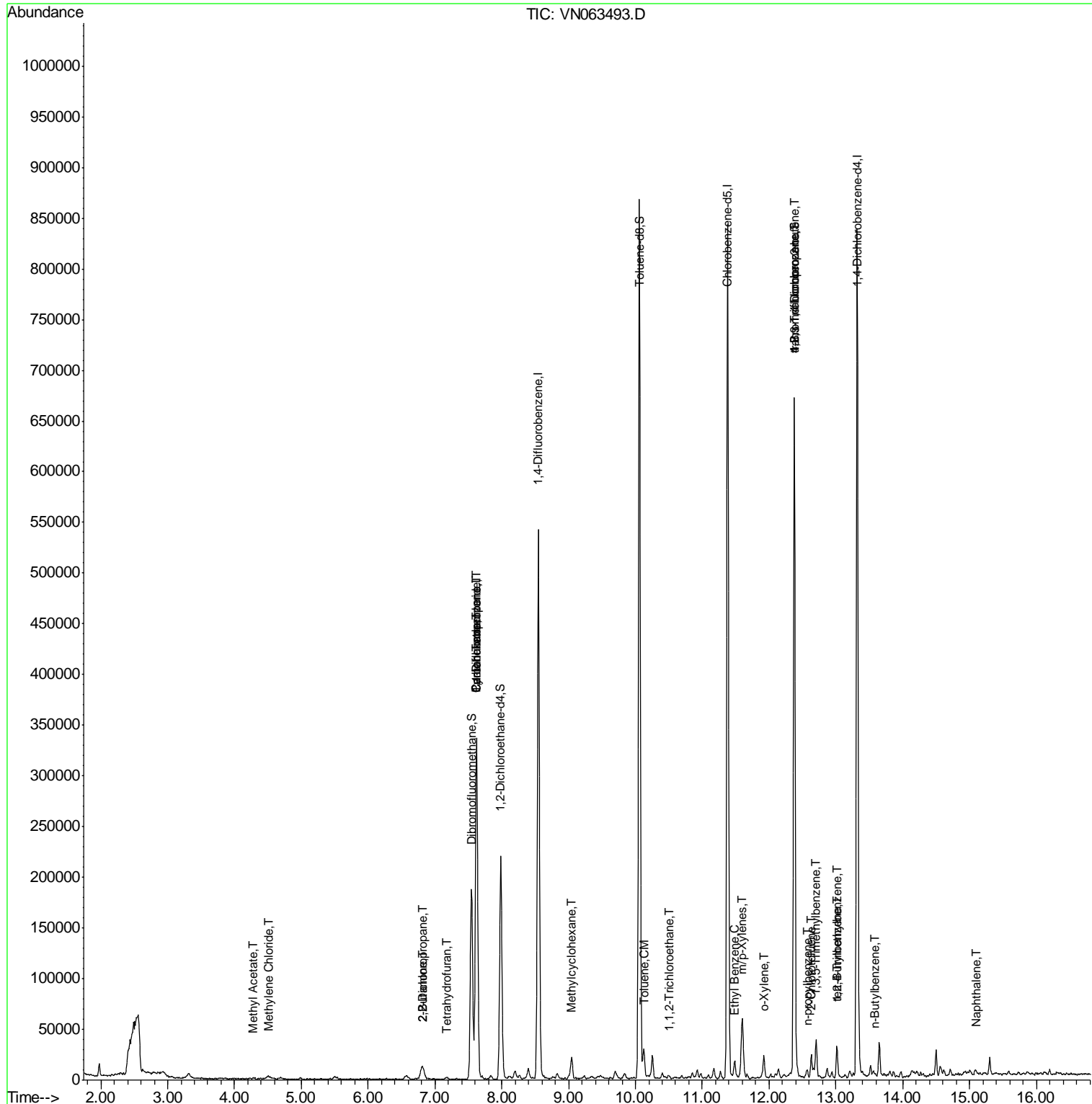
						Qvalue
18) Methyl Acetate	4.28	43	1032	0.303	µg/l #	60
20) Methylene Chloride	4.50	84	1035	0.304	µg/l #	84
25) 2-Butanone	6.80	43	1143	0.554	µg/l #	51
26) 2,2-Dichloropropane	6.81	77	1297	0.242	µg/l #	55
29) Tetrahydrofuran	7.17	42	879	0.623	µg/l #	76
31) Cyclohexane	7.62	56	9702	1.682	µg/l #	53
36) 1,1-Dichloropropene	7.62	75	22845	4.682	µg/l #	51
38) Carbon Tetrachloride	7.62	117	27764	5.574	µg/l #	18
39) Methylcyclohexane	9.05	83	8118	1.533	µg/l	93
52) Toluene	10.13	92	8866	1.059	µg/l	98
55) 1,1,2-Trichloroethane	10.50	97	1068	0.321	µg/l #	15
67) Ethyl Benzene	11.49	91	11812	0.656	µg/l #	86
68) m/p-Xylenes	11.59	106	13809	2.128	µg/l	99
69) o-Xylene	11.92	106	6080	0.984	µg/l	87
76) 1,2,3-Trichloropropane	12.38	75	129143	25.986	µg/l #	100
78) n-propylbenzene	12.57	91	7622	0.407	µg/l #	77
79) 2-Chlorotoluene	12.63	91	2304	0.205	µg/l #	43
80) 1,3,5-Trimethylbenzene	12.71	105	4524	0.337	µg/l	95
81) trans-1,4-Dichloro-2-buten	12.38	75	129143	71.245	µg/l #	7
83) tert-Butylbenzene	13.01	119	2234	0.202	µg/l #	82
84) 1,2,4-Trimethylbenzene	13.02	105	17641	1.302	µg/l	95
89) n-Butylbenzene	13.59	91	2739	0.227	µg/l	79
95) Naphthalene	15.11	128	2723	0.212	µg/l #	76

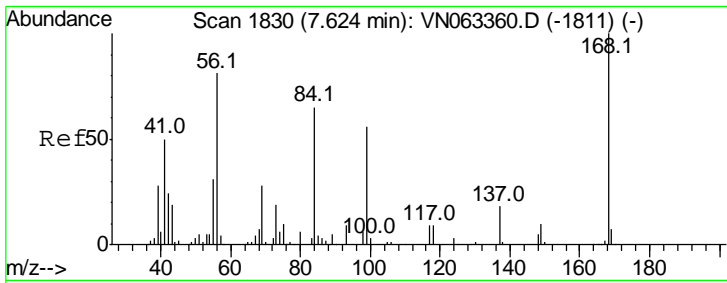
(#) = qualifier out of range (m) = manual integration (+) = signals summed

Data Path : Z:\VOASRV\HPCHEM1\MSVOA N\DATA\VN092120\  
 Data File : VN063493.D  
 Acq On : 21 Sep 2020 18:08  
 Operator : JC/MD  
 Sample : L4057-01  
 Misc : 1.10µ/10mL/100uL/5.00mL/MSVOA\_N/MEOH  
 ALS Vial : 20 Sample Multiplier: 1

Instrument :  
 MSVOA\_N  
 ClientSampleId :  
 JA-DRUM-COMPME

Quant Time: Sep 22 02:26:50 2020  
 Quant Method : Z:\VOASRV\HPCHEM1\MSVOA\_N\METHODS\82N091620W.M  
 Quant Title : SW846 8260  
 QLast Update : Wed Sep 16 13:05:20 2020  
 Response via : Initial Calibration

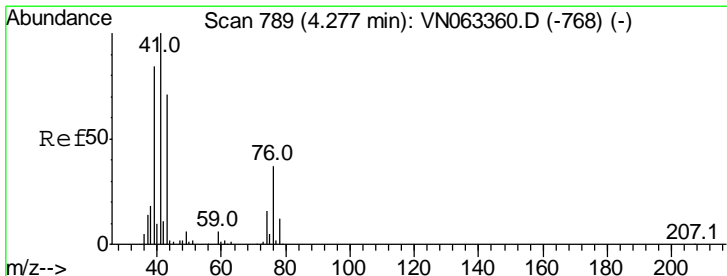
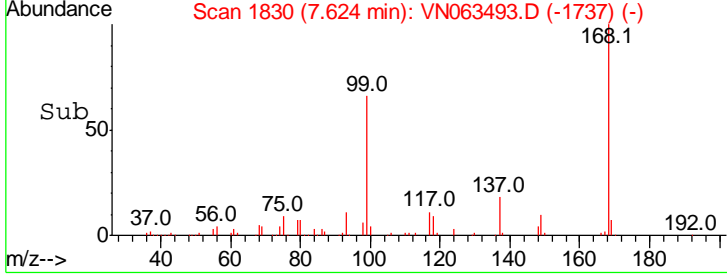
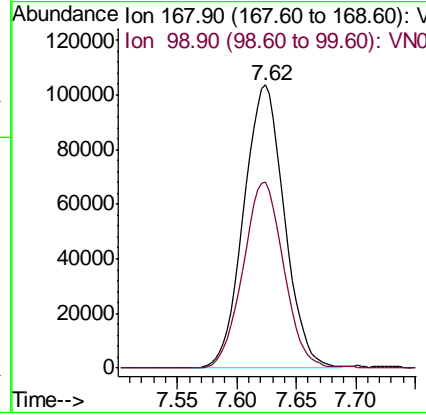
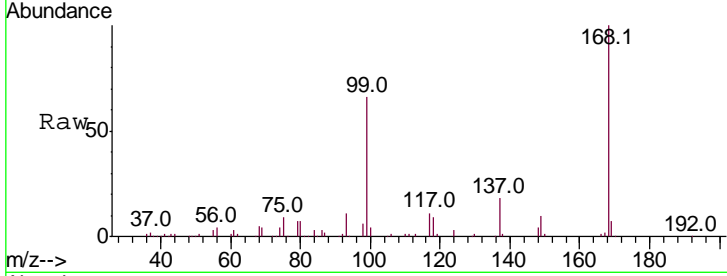




#1  
 Pentafluorobenzene  
 Concen: 50.000 ug/l  
 RT: 7.62 min Scan# 1830  
 Delta R.T. -0.00 min  
 Lab File: VN063493.D  
 Acq: 21 Sep 2020 18:08

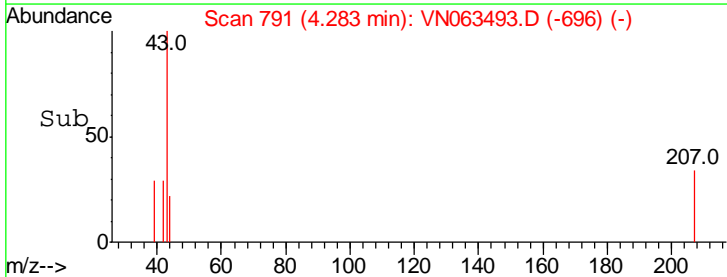
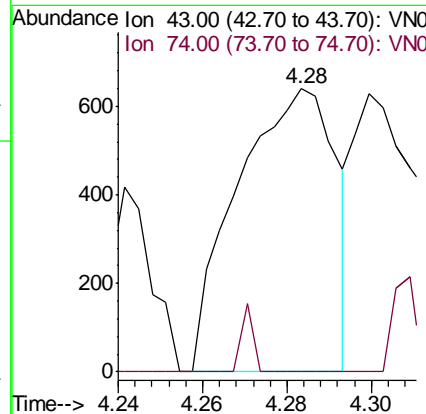
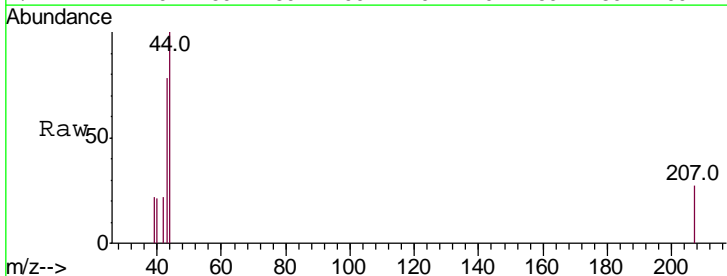
Instrument :  
 MSVOA\_N  
 ClientSampleId :  
 JA-DRUM-COMPME

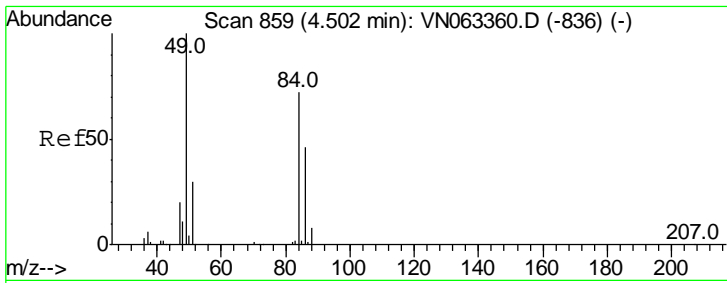
Tgt Ion	Resp	Lower	Upper
168	100		
99	65.5	53.0	79.6



#18  
 Methyl Acetate  
 Concen: 0.303 ug/l  
 RT: 4.28 min Scan# 791  
 Delta R.T. 0.01 min  
 Lab File: VN063493.D  
 Acq: 21 Sep 2020 18:08

Tgt Ion	Resp	Lower	Upper
43	100		
74	2.9	17.4	26.2

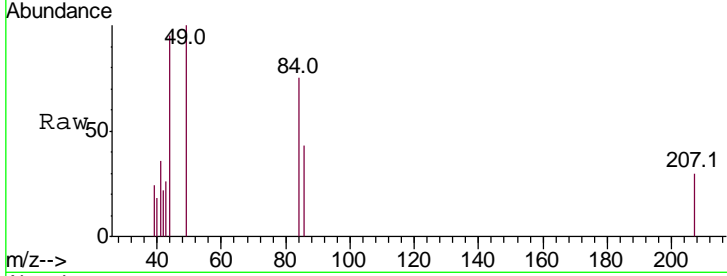




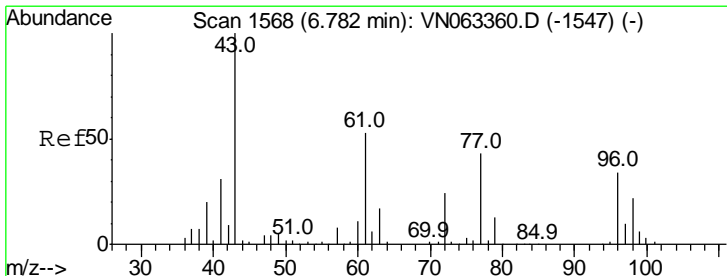
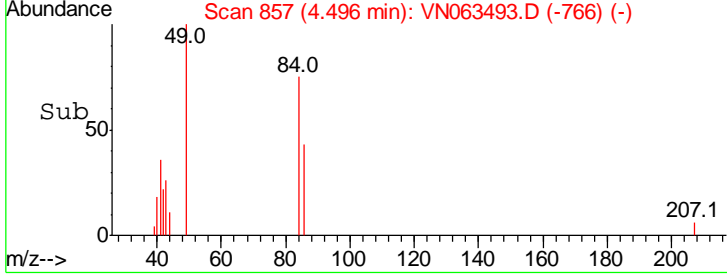
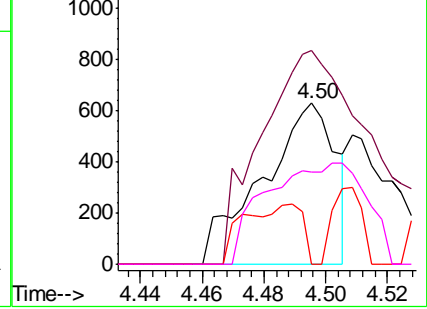
#20  
 Methylene Chloride  
 Concen: 0.304 ug/l  
 RT: 4.50 min Scan# 857  
 Delta R.T. -0.01 min  
 Lab File: VN063493.D  
 Acq: 21 Sep 2020 18:08

Instrument :  
 MSVOA\_N  
 ClientSampled :  
 JA-DRUM-COMPME

Tgt Ion	Resp	Lower	Upper
84	100		
49	132.5	110.7	166.1
51	0.0	32.9	49.3#
86	57.5	51.1	76.7

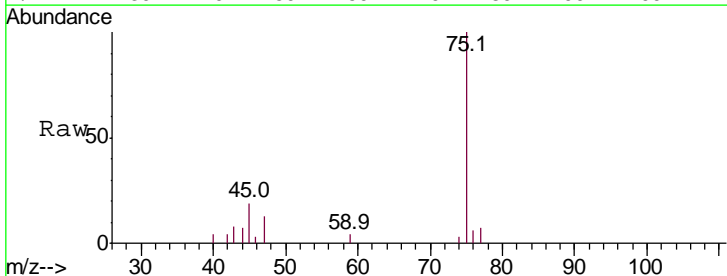


Abundance Ion 83.90 (83.60 to 84.60): VNC  
 Ion 48.90 (48.60 to 49.60): VNC  
 Ion 50.90 (50.60 to 51.60): VNC  
 Ion 85.90 (85.60 to 86.60): VNC

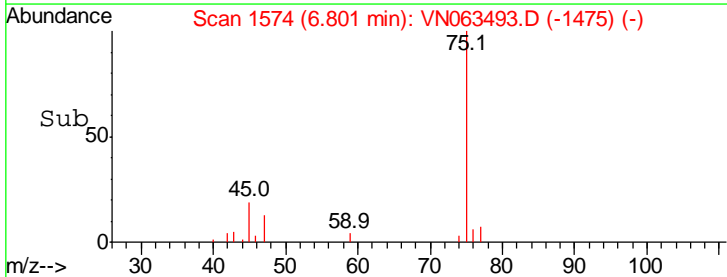
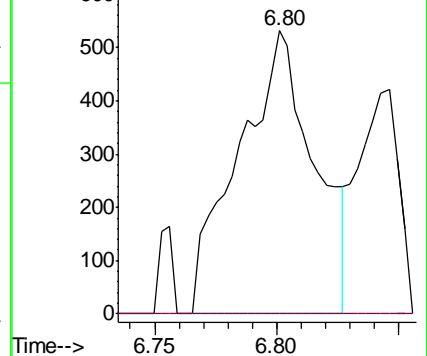


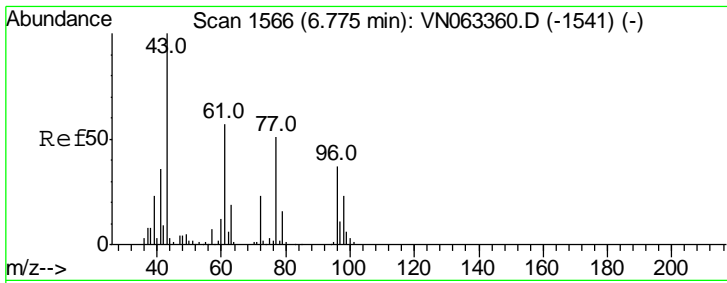
#25  
 2-Butanone  
 Concen: 0.554 ug/l  
 RT: 6.80 min Scan# 1574  
 Delta R.T. 0.02 min  
 Lab File: VN063493.D  
 Acq: 21 Sep 2020 18:08

Tgt Ion	Resp	Lower	Upper
43	100		
72	0.0	19.2	28.8#



Abundance Ion 43.00 (42.70 to 43.70): VNC  
 Ion 72.00 (71.70 to 72.70): VNC

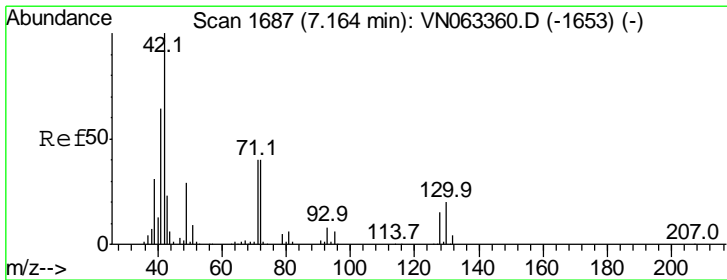
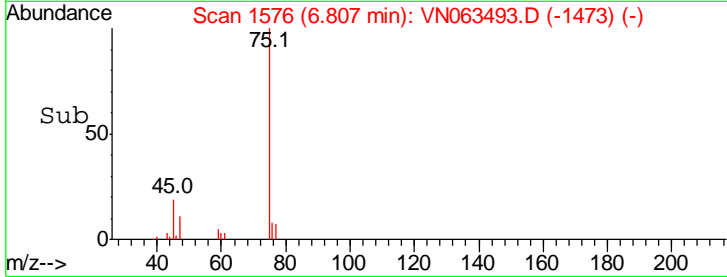
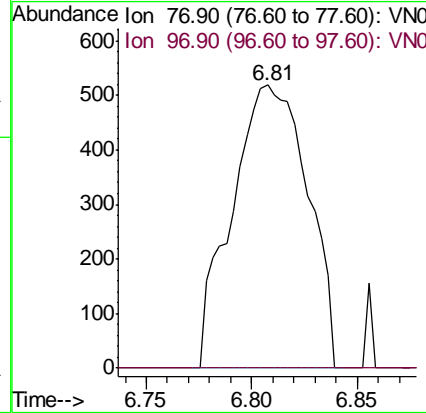
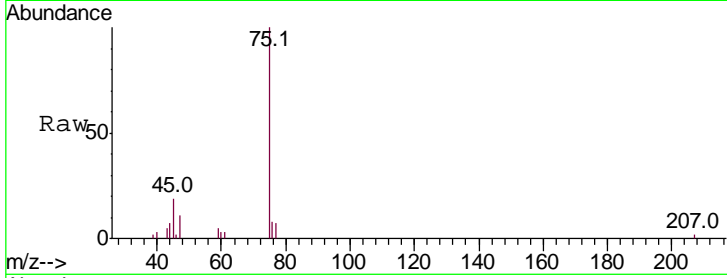




#26  
 2,2-Dichloropropane  
 Concen: 0.242 ug/l  
 RT: 6.81 min Scan# 1576  
 Delta R.T. 0.03 min  
 Lab File: VN063493.D  
 Acq: 21 Sep 2020 18:08

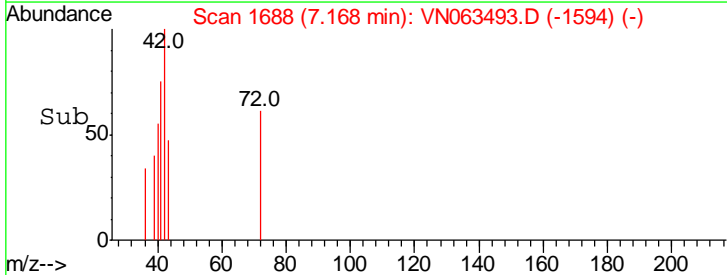
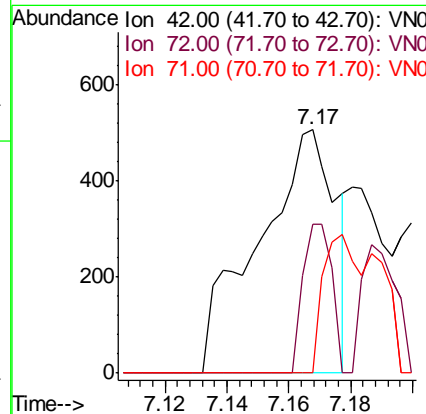
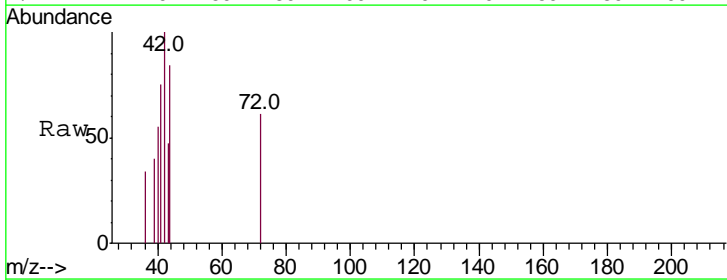
Instrument :  
 MSVOA\_N  
 ClientSampled :  
 JA-DRUM-COMPME

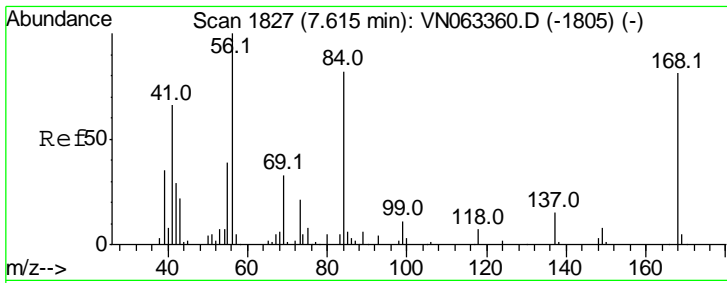
Tgt Ion: 77 Resp: 1297  
 Ion Ratio Lower Upper  
 77 100  
 97 0.0 10.5 31.6#



#29  
 Tetrahydrofuran  
 Concen: 0.623 ug/l  
 RT: 7.17 min Scan# 1688  
 Delta R.T. 0.00 min  
 Lab File: VN063493.D  
 Acq: 21 Sep 2020 18:08

Tgt Ion: 42 Resp: 879  
 Ion Ratio Lower Upper  
 42 100  
 72 22.9 32.1 48.1#  
 71 26.3 31.2 46.8#

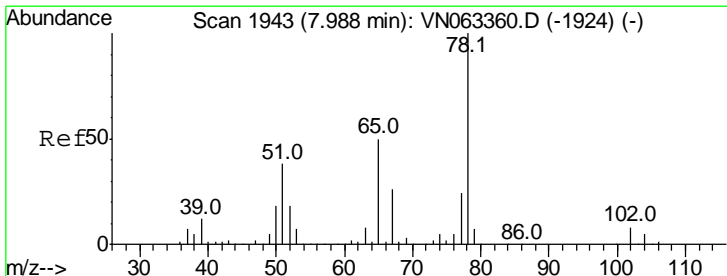
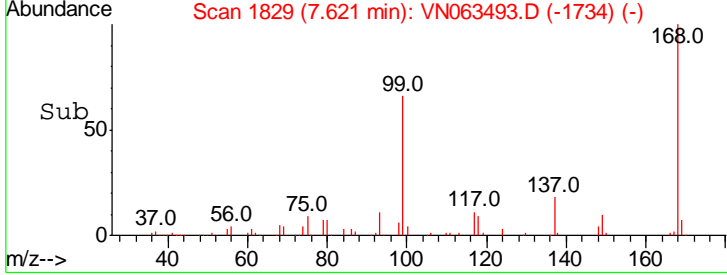
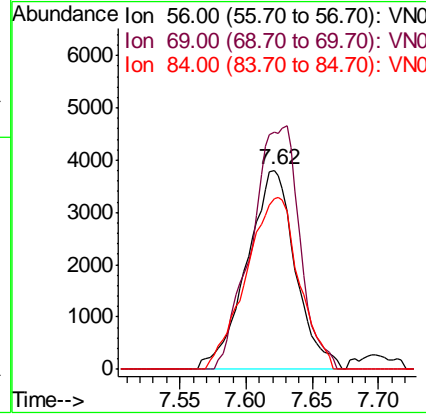
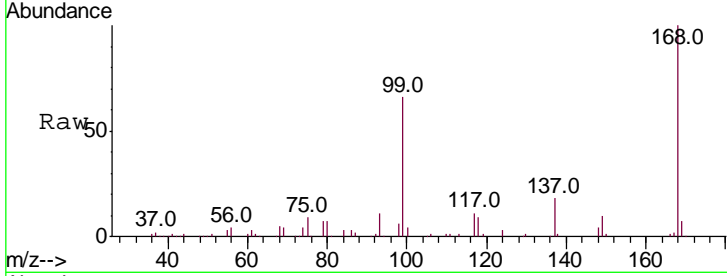




#31  
 Cyclohexane  
 Concen: 1.682 ug/l  
 RT: 7.62 min Scan# 1829  
 Delta R.T. 0.01 min  
 Lab File: VN063493.D  
 Acq: 21 Sep 2020 18:08

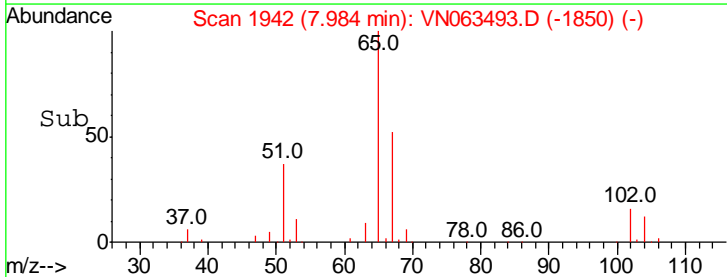
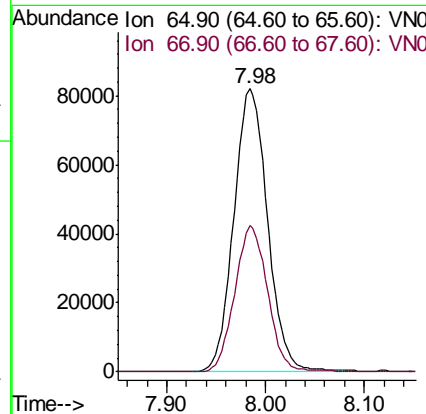
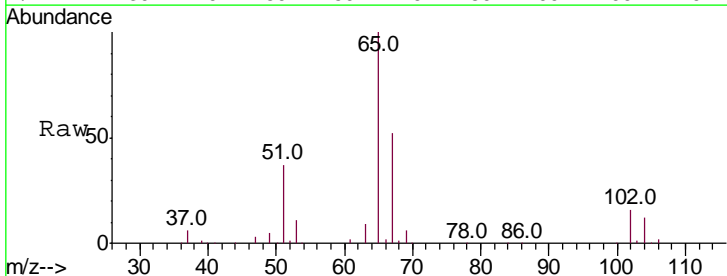
Instrument : MSVOA\_N  
 ClientSampleId : JA-DRUM-COMPME

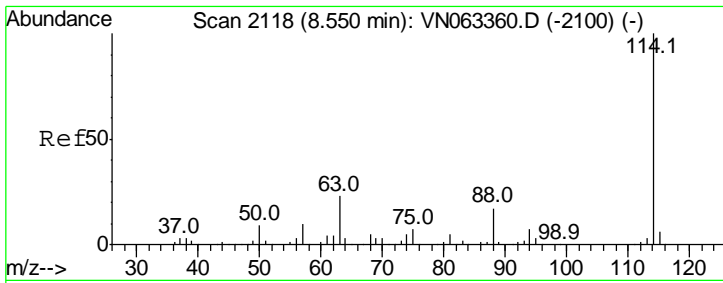
Tgt Ion	Resp	Lower	Upper
56	100		
69	118.8	26.1	39.1#
84	85.7	65.4	98.2



#33  
 1,2-Dichloroethane-d4  
 Concen: 46.732 ug/l  
 RT: 7.98 min Scan# 1942  
 Delta R.T. -0.00 min  
 Lab File: VN063493.D  
 Acq: 21 Sep 2020 18:08

Tgt Ion	Resp	Lower	Upper
65	100		
67	50.0	0.0	104.2

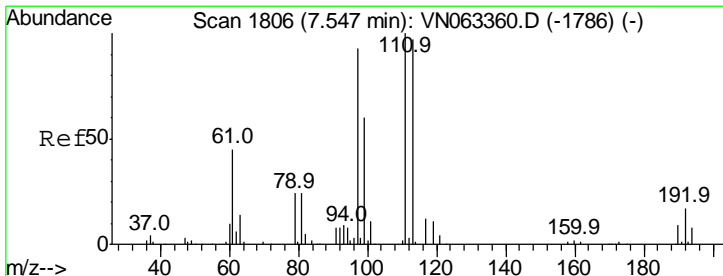
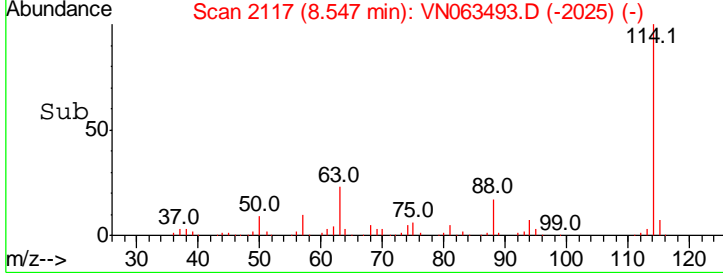
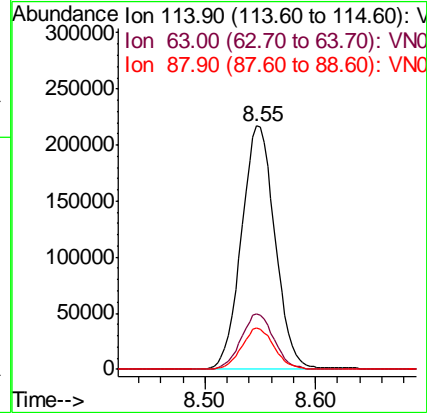
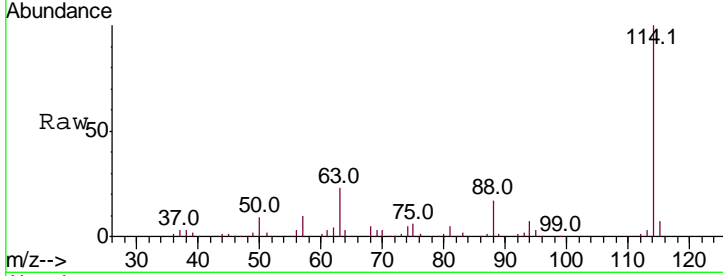




#34  
 1,4-Difluorobenzene  
 Concen: 50.000 ug/l  
 RT: 8.55 min Scan# 2117  
 Delta R.T. -0.00 min  
 Lab File: VN063493.D  
 Acq: 21 Sep 2020 18:08

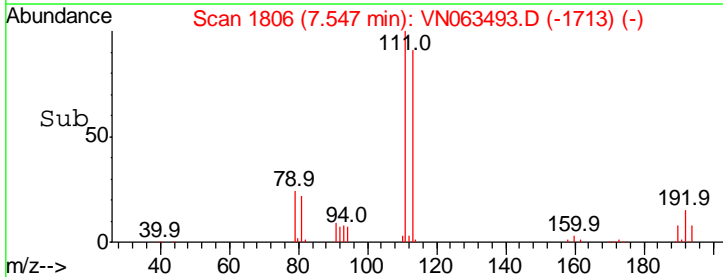
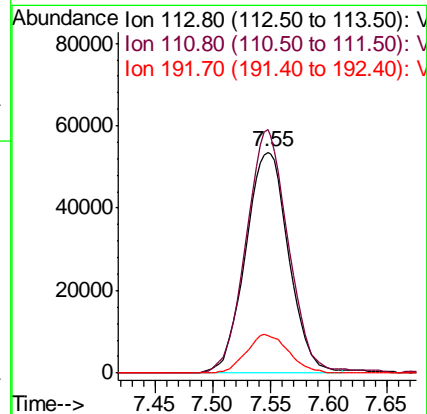
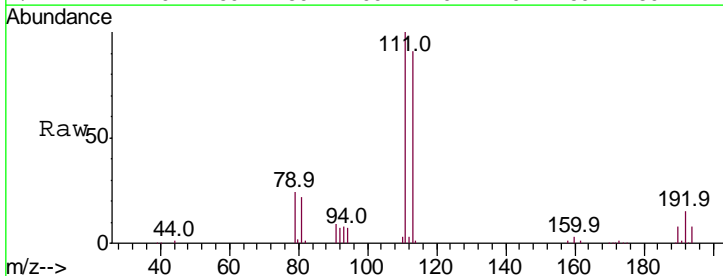
Instrument : MSVOA\_N  
 ClientSampleId : JA-DRUM-COMPME

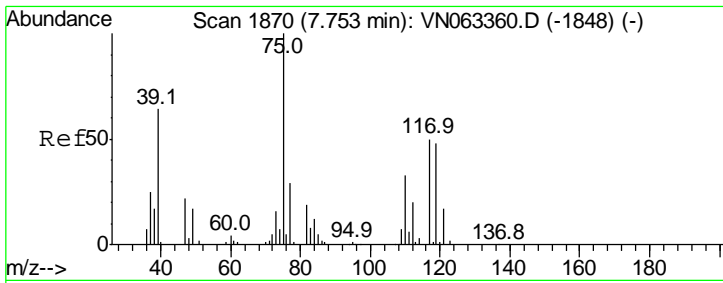
Tgt Ion	Resp	Lower	Upper
114	100		
63	22.9	0.0	46.4
88	17.1	0.0	33.2



#35  
 Dibromofluoromethane  
 Concen: 43.626 ug/l  
 RT: 7.55 min Scan# 1806  
 Delta R.T. -0.00 min  
 Lab File: VN063493.D  
 Acq: 21 Sep 2020 18:08

Tgt Ion	Resp	Lower	Upper
113	100		
111	108.7	82.9	124.3
192	17.1	13.9	20.9

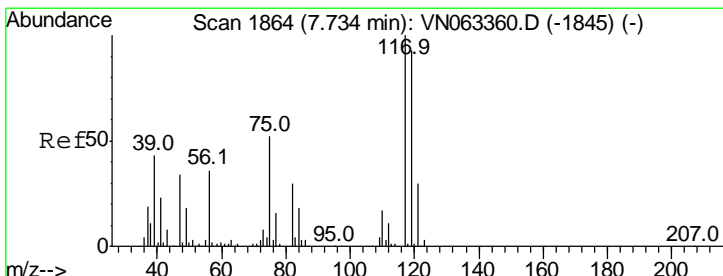
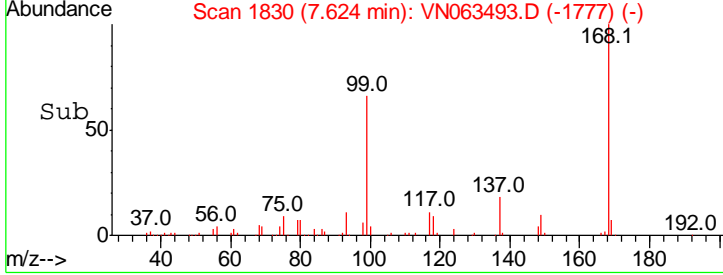
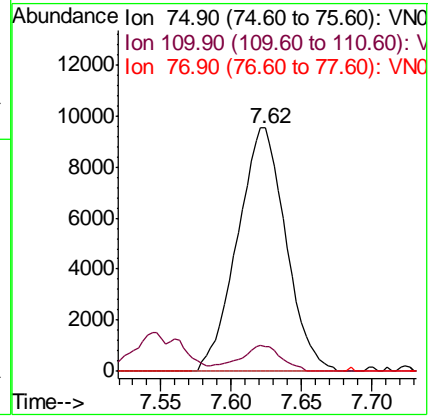
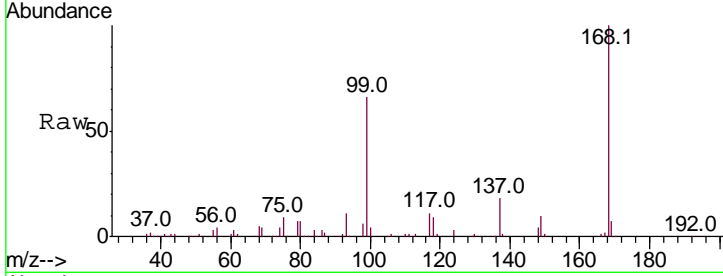




#36  
 1,1-Dichloropropene  
 Concen: 4.682 ug/l  
 RT: 7.62 min Scan# 1830  
 Delta R.T. -0.13 min  
 Lab File: VN063493.D  
 Acq: 21 Sep 2020 18:08

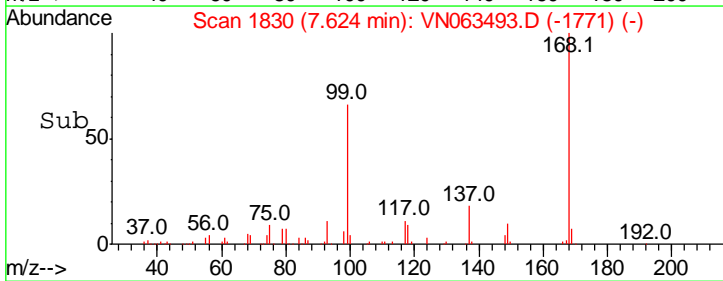
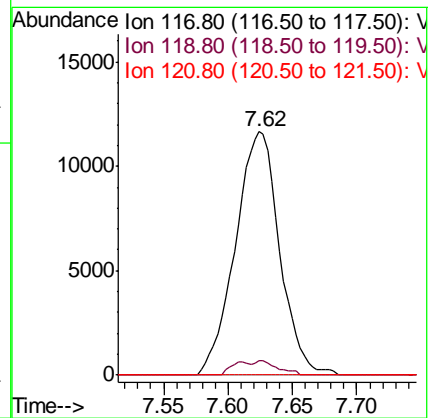
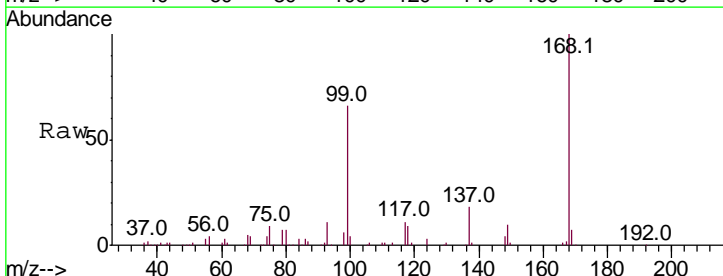
Instrument : MSVOA\_N  
 ClientSampled : JA-DRUM-COMPME

Tgt Ion	Resp	Lower	Upper
75	100		
110	9.2	16.5	49.5#
77	0.0	24.6	36.8#

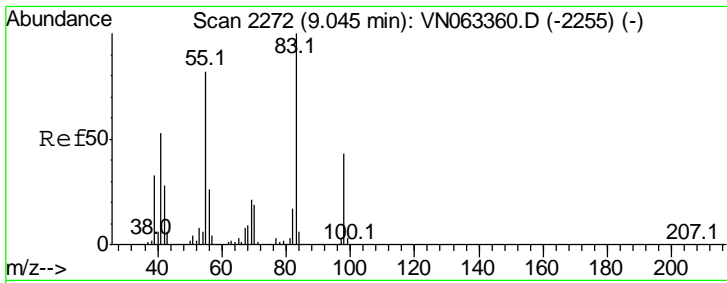


#38  
 Carbon Tetrachloride  
 Concen: 5.574 ug/l  
 RT: 7.62 min Scan# 1830  
 Delta R.T. -0.11 min  
 Lab File: VN063493.D  
 Acq: 21 Sep 2020 18:08

Tgt Ion	Resp	Lower	Upper
117	100		
119	5.8	74.5	111.7#
121	0.0	24.1	36.1#



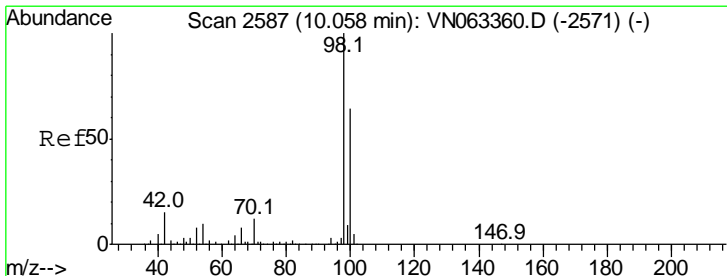
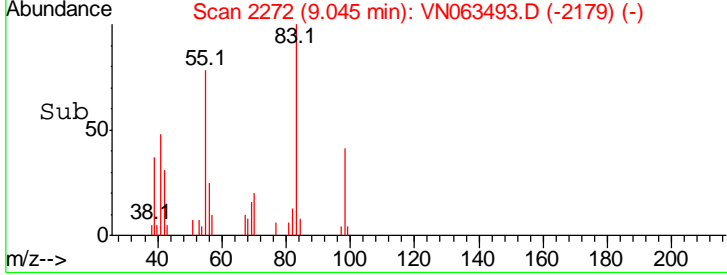
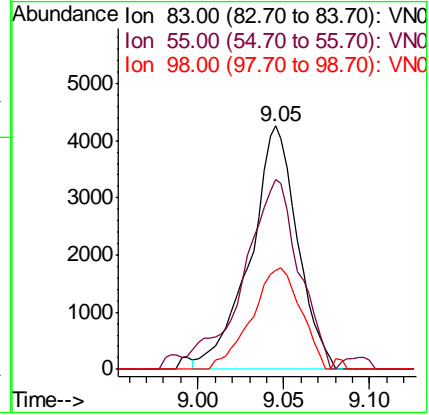
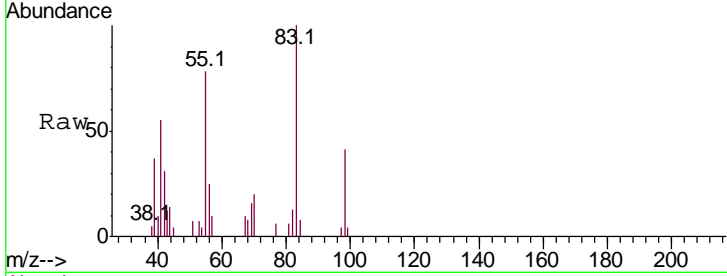




#39  
 Methylcyclohexane  
 Concen: 1.533 ug/l  
 RT: 9.05 min Scan# 2272  
 Delta R.T. -0.00 min  
 Lab File: VN063493.D  
 Acq: 21 Sep 2020 18:08

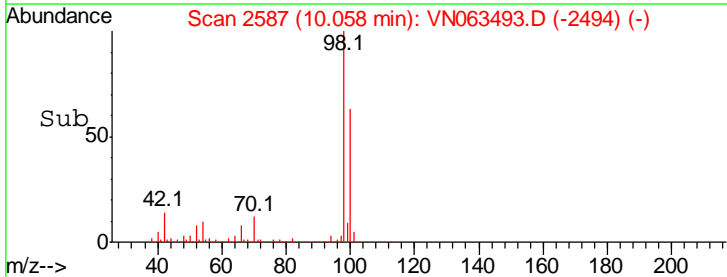
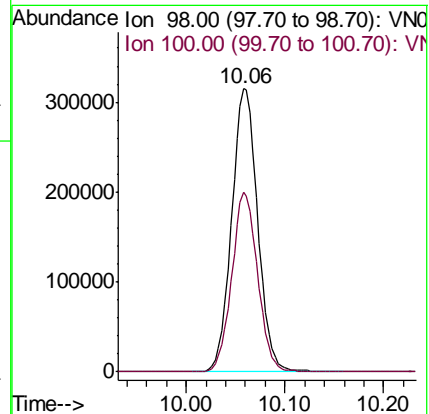
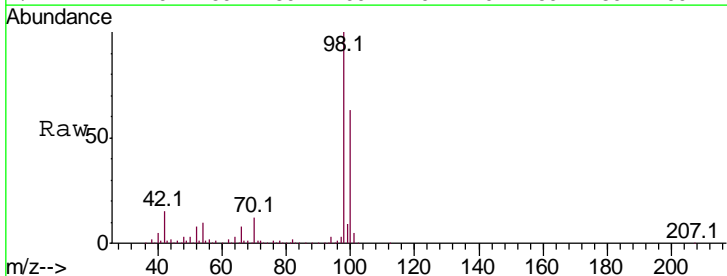
**Instrument :**  
 MSVOA\_N  
**ClientSampled :**  
 JA-DRUM-COMPME

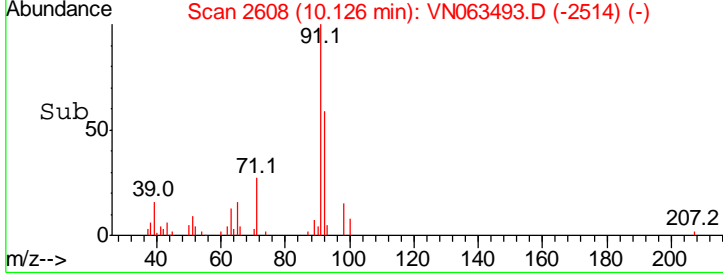
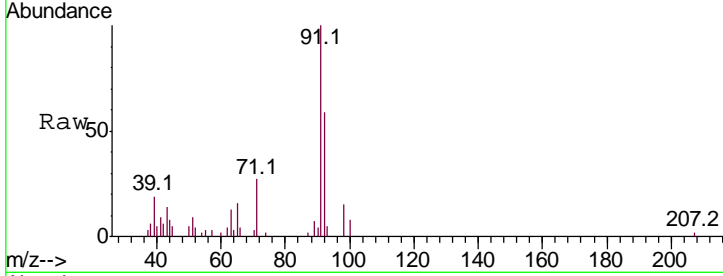
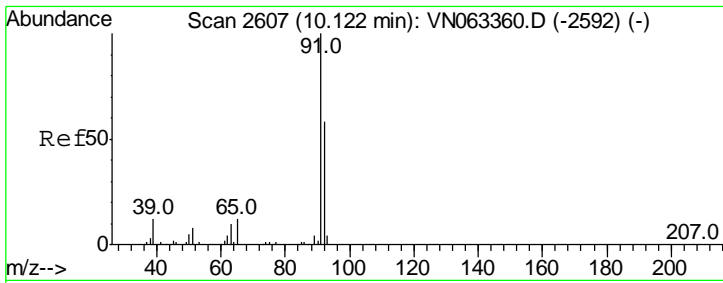
Tgt Ion	Resp	Lower	Upper
83	100		
55	74.2	65.5	98.3
98	40.5	34.2	51.4



#50  
 Toluene-d8  
 Concen: 48.677 ug/l  
 RT: 10.06 min Scan# 2587  
 Delta R.T. -0.00 min  
 Lab File: VN063493.D  
 Acq: 21 Sep 2020 18:08

Tgt Ion	Resp	Lower	Upper
98	100		
100	62.9	50.7	76.1

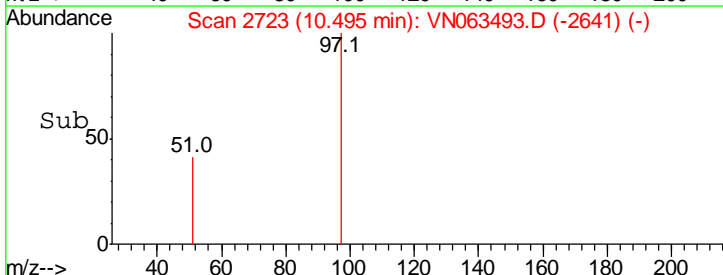
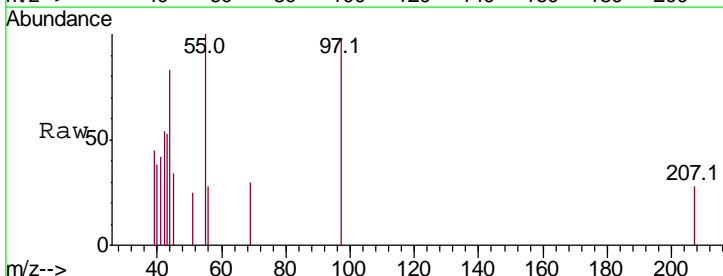
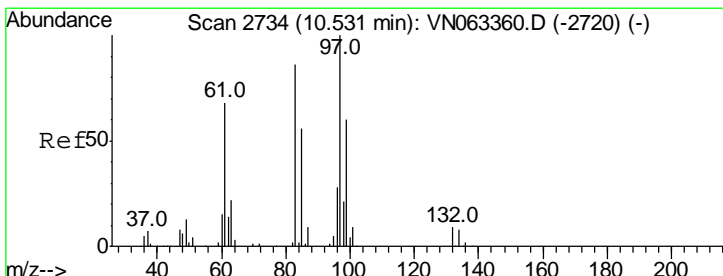
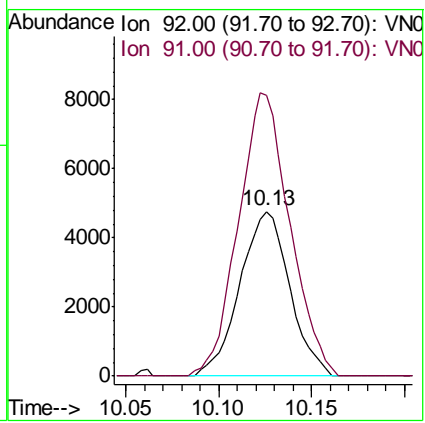




#52  
 Toluene  
 Concen: 1.059 ug/l  
 RT: 10.13 min Scan# 2608  
 Delta R.T. 0.00 min  
 Lab File: VN063493.D  
 Acq: 21 Sep 2020 18:08

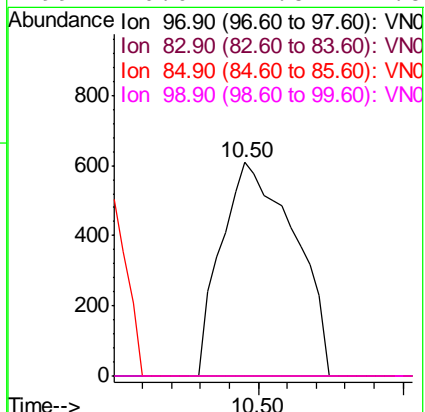
Instrument : MSVOA\_N  
 ClientSampled : JA-DRUM-COMPME

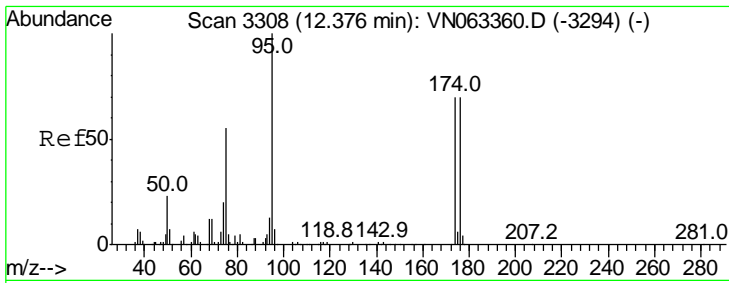
Tgt Ion	Resp	Lower	Upper
92	8866		
92	100		
91	177.8	139.7	209.5



#55  
 1,1,2-Trichloroethane  
 Concen: 0.321 ug/l  
 RT: 10.50 min Scan# 2723  
 Delta R.T. -0.04 min  
 Lab File: VN063493.D  
 Acq: 21 Sep 2020 18:08

Tgt Ion	Resp	Lower	Upper
97	1068		
97	100		
83	0.0	68.9	103.3#
85	0.0	44.8	67.2#
99	0.0	47.8	71.8#

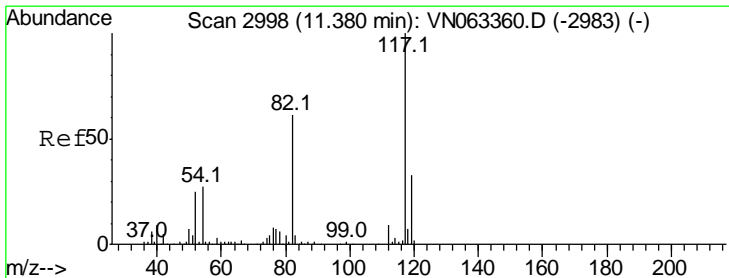
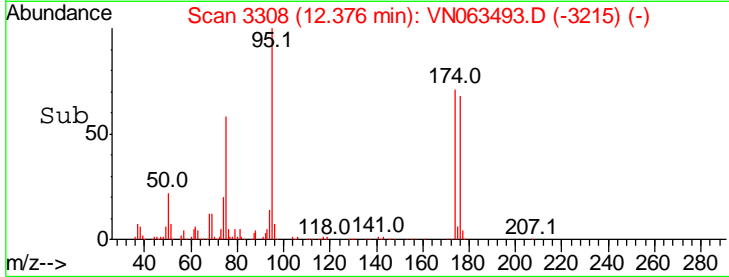
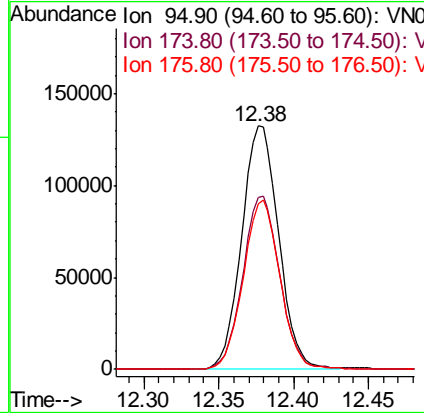
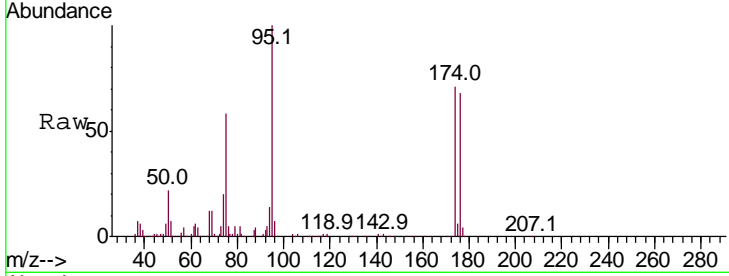




#62  
 4-Bromofluorobenzene  
 Concen: 52.202 ug/l  
 RT: 12.38 min Scan# 3308  
 Delta R.T. -0.00 min  
 Lab File: VN063493.D  
 Acq: 21 Sep 2020 18:08

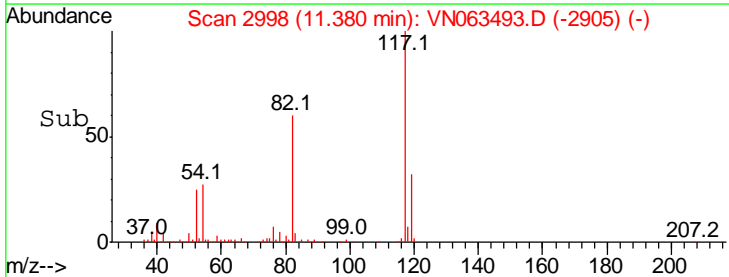
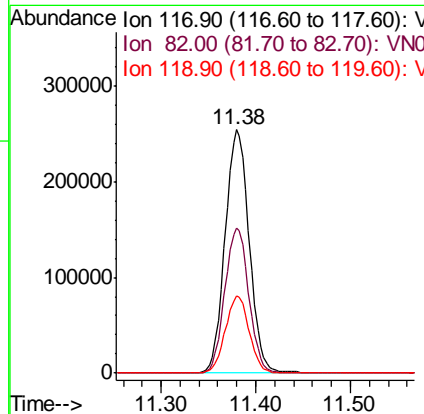
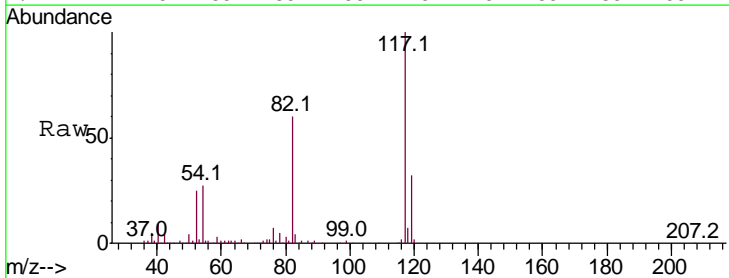
Instrument :  
 MSVOA\_N  
 ClientSampled :  
 JA-DRUM-COMPME

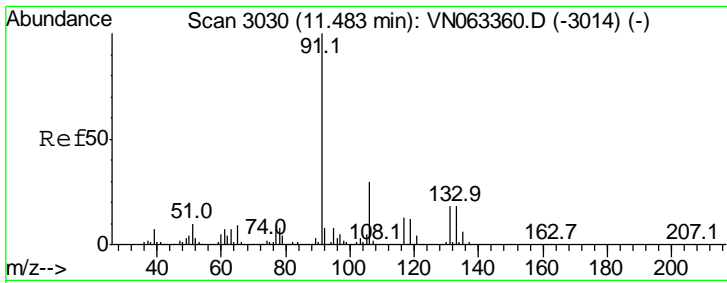
Tgt Ion	Resp	Lower	Upper
95	100		
174	71.4	0.0	140.8
176	69.1	0.0	137.6



#63  
 Chlorobenzene-d5  
 Concen: 50.000 ug/l  
 RT: 11.38 min Scan# 2998  
 Delta R.T. -0.00 min  
 Lab File: VN063493.D  
 Acq: 21 Sep 2020 18:08

Tgt Ion	Resp	Lower	Upper
117	100		
82	59.7	49.2	73.8
119	31.8	26.2	39.4

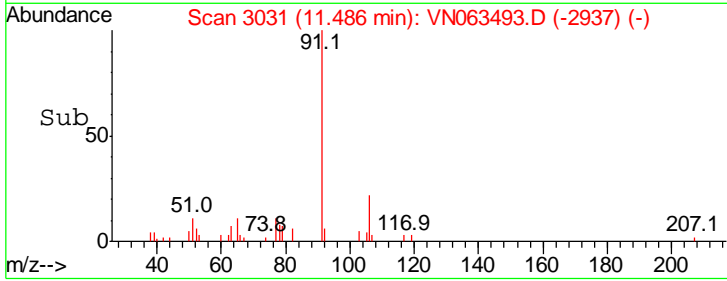
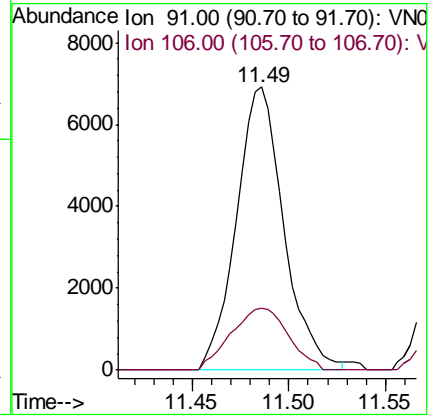
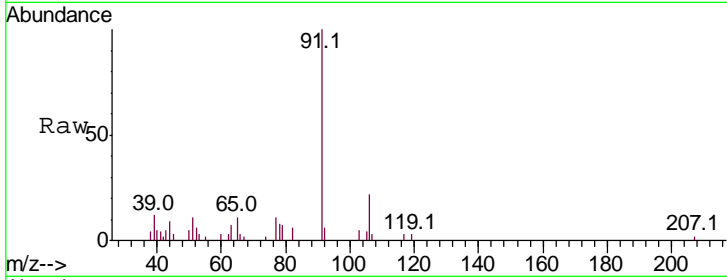




#67  
 Ethyl Benzene  
 Concen: 0.656 ug/l  
 RT: 11.49 min Scan# 3031  
 Delta R.T. 0.00 min  
 Lab File: VN063493.D  
 Acq: 21 Sep 2020 18:08

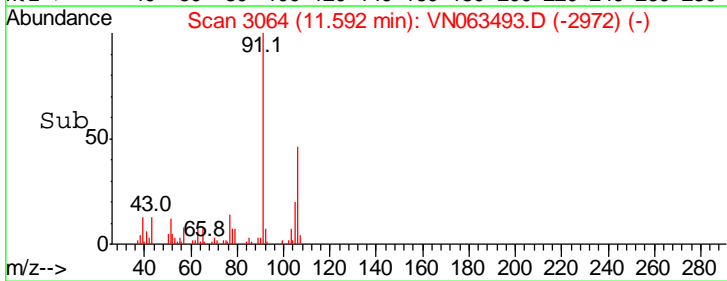
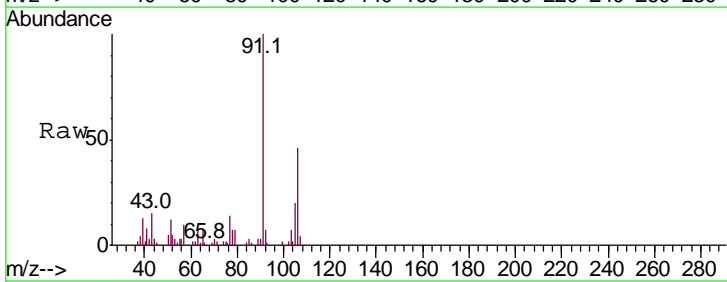
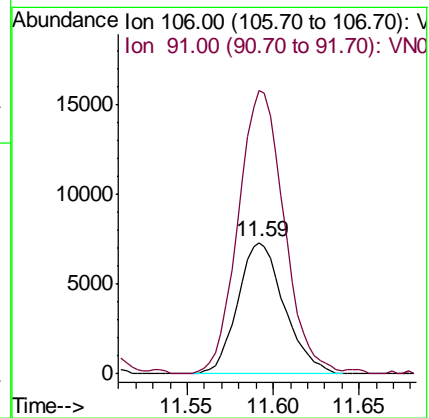
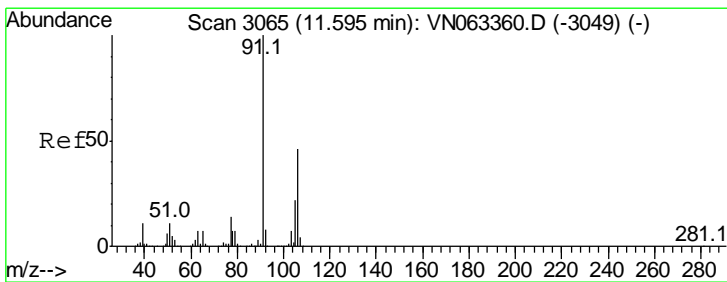
Instrument : MSVOA\_N  
 ClientSampled : JA-DRUM-COMPME

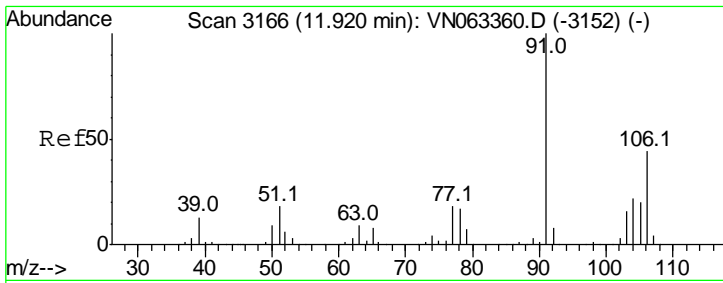
Tgt Ion: 91 Resp: 11812  
 Ion Ratio Lower Upper  
 91 100  
 106 22.0 23.8 35.6#



#68  
 m/p-Xylenes  
 Concen: 2.128 ug/l  
 RT: 11.59 min Scan# 3064  
 Delta R.T. -0.00 min  
 Lab File: VN063493.D  
 Acq: 21 Sep 2020 18:08

Tgt Ion: 106 Resp: 13809  
 Ion Ratio Lower Upper  
 106 100  
 91 212.7 171.2 256.8

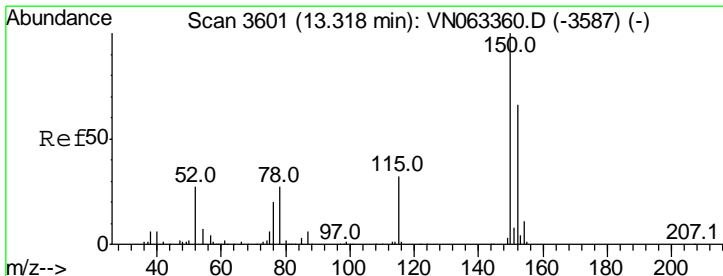
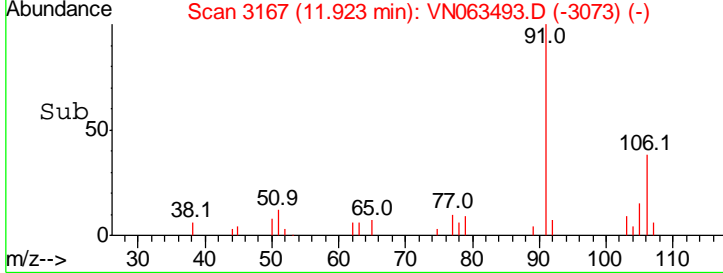
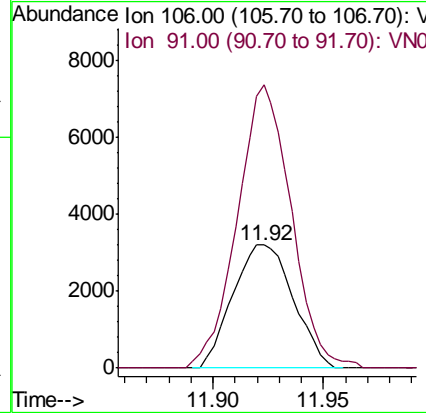
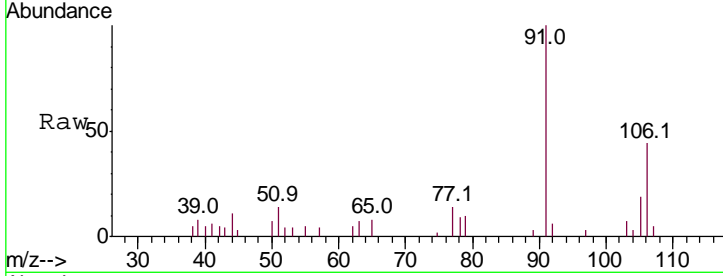




#69  
 o-Xylene  
 Concen: 0.984 ug/l  
 RT: 11.92 min Scan# 3167  
 Delta R.T. 0.00 min  
 Lab File: VN063493.D  
 Acq: 21 Sep 2020 18:08

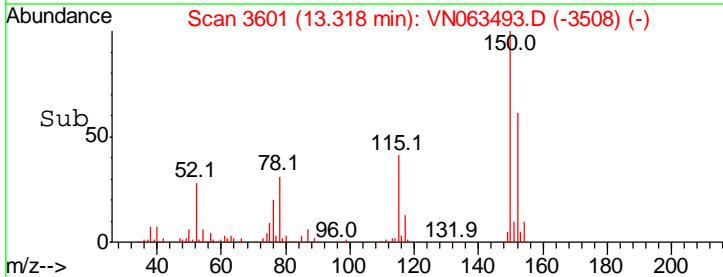
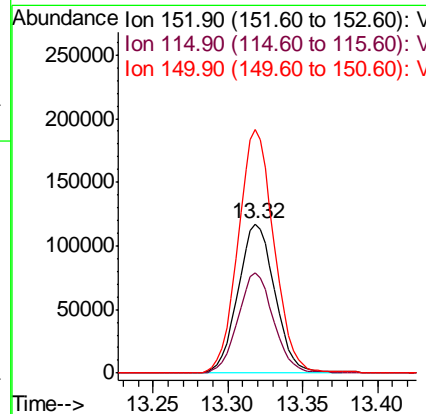
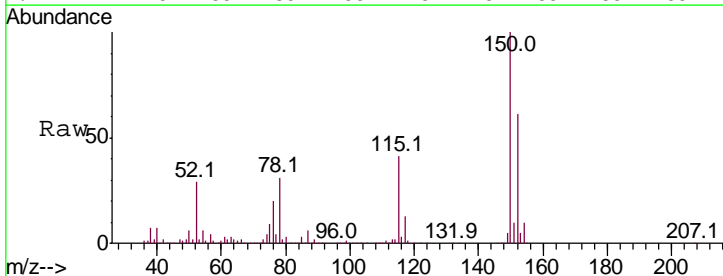
Instrument :  
 MSVOA\_N  
 ClientSampleId :  
 JA-DRUM-COMPME

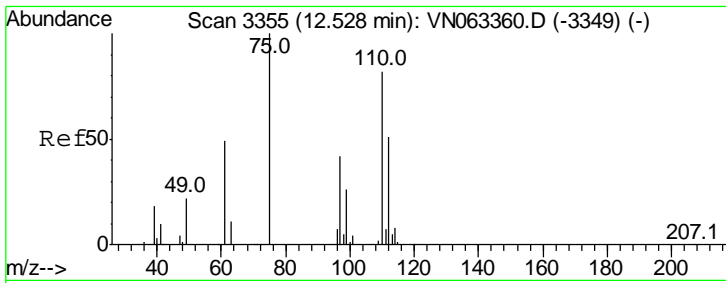
Tgt Ion:106 Resp: 6080  
 Ion Ratio Lower Upper  
 106 100  
 91 205.6 113.6 340.8



#72  
 1,4-Dichlorobenzene-d4  
 Concen: 50.000 ug/l  
 RT: 13.32 min Scan# 3601  
 Delta R.T. -0.00 min  
 Lab File: VN063493.D  
 Acq: 21 Sep 2020 18:08

Tgt Ion:152 Resp: 200782  
 Ion Ratio Lower Upper  
 152 100  
 115 64.9 32.2 96.6  
 150 159.3 0.0 343.4

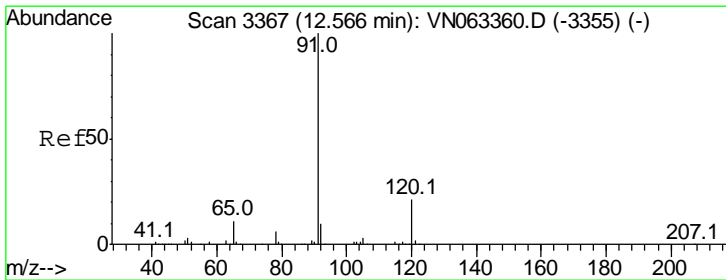
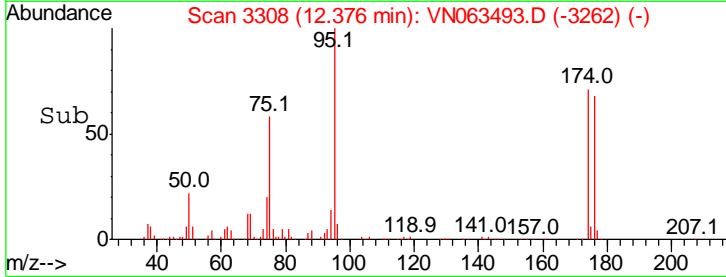
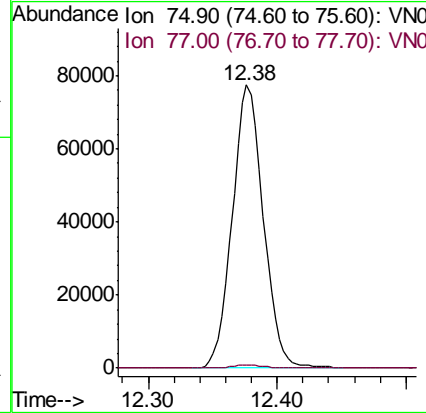
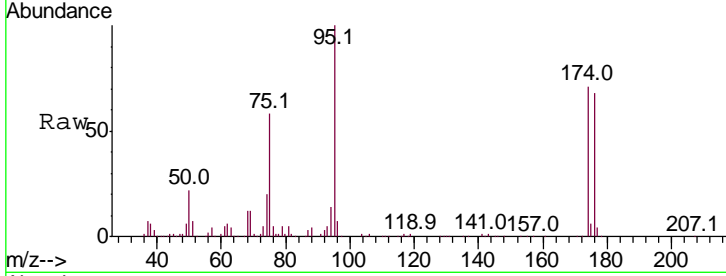




#76  
 1,2,3-Trichloropropane  
 Concen: 25.986 ug/l  
 RT: 12.38 min Scan# 3308  
 Delta R.T. -0.15 min  
 Lab File: VN063493.D  
 Acq: 21 Sep 2020 18:08

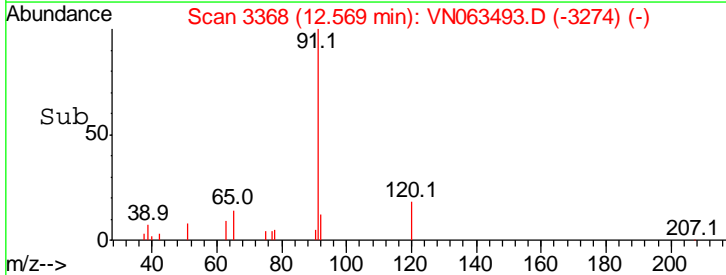
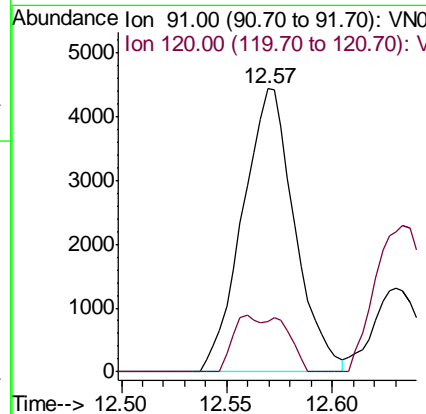
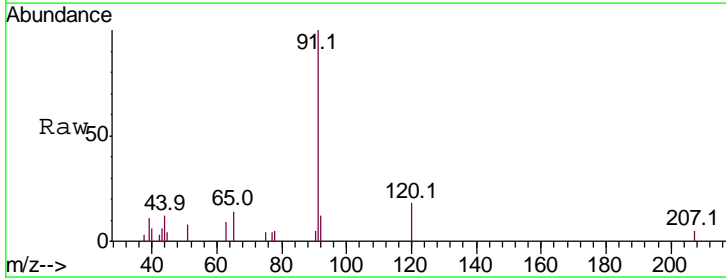
Instrument :  
 MSVOA\_N  
 ClientSampled :  
 JA-DRUM-COMPME

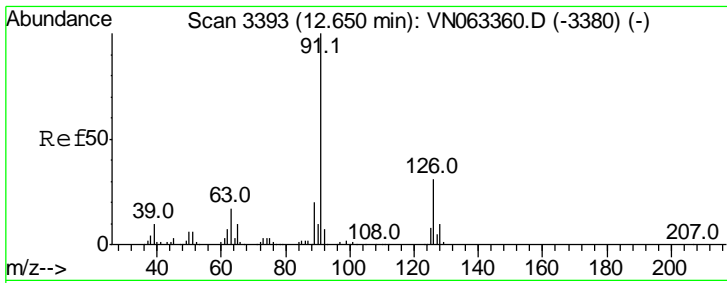
Tgt Ion: 75 Resp: 129143  
 Ion Ratio Lower Upper  
 75 100  
 77 1.1 0.0 0.0#



#78  
 n-propylbenzene  
 Concen: 0.407 ug/l  
 RT: 12.57 min Scan# 3368  
 Delta R.T. 0.00 min  
 Lab File: VN063493.D  
 Acq: 21 Sep 2020 18:08

Tgt Ion: 91 Resp: 7622  
 Ion Ratio Lower Upper  
 91 100  
 120 10.6 10.8 32.3#

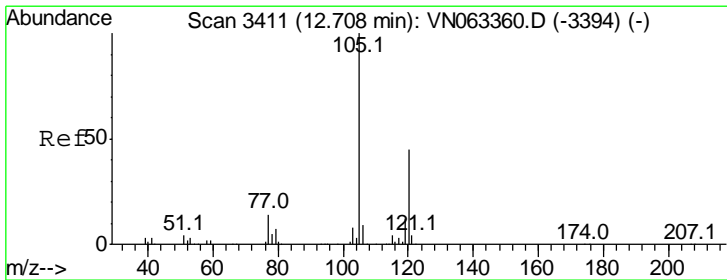
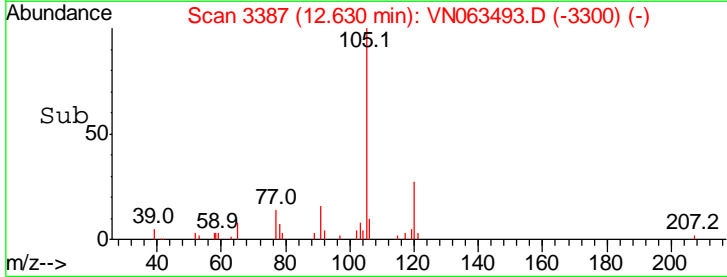
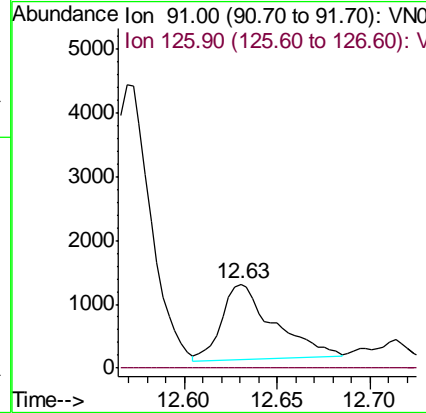
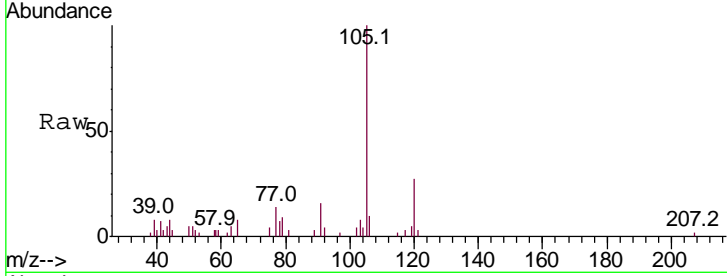




#79  
 2-Chlorotoluene  
 Concen: 0.205 ug/l  
 RT: 12.63 min Scan# 3387  
 Delta R.T. -0.02 min  
 Lab File: VN063493.D  
 Acq: 21 Sep 2020 18:08

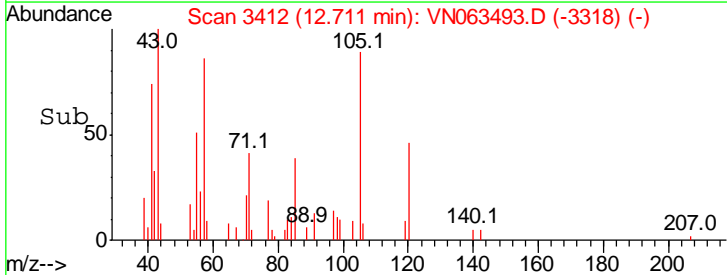
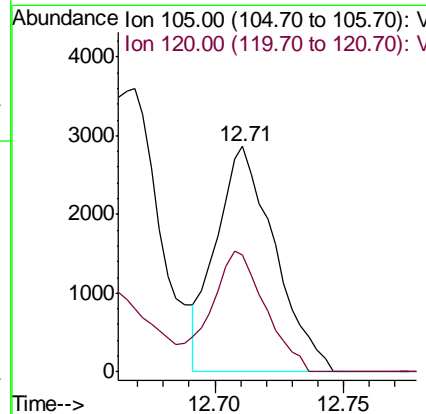
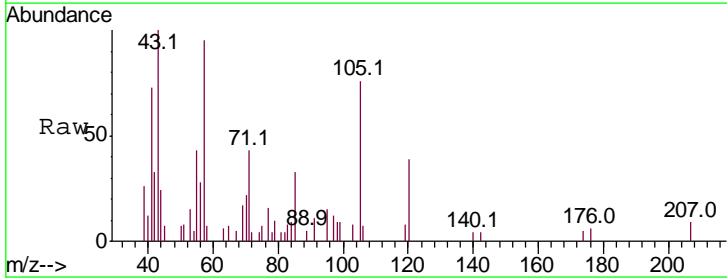
Instrument : MSVOA\_N  
 ClientSampleId : JA-DRUM-COMPME

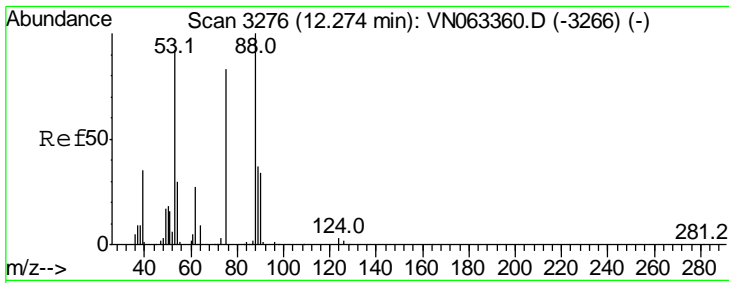
Tgt Ion	Resp	Lower	Upper
91	100		
126	0.0	15.8	47.3#



#80  
 1,3,5-Trimethylbenzene  
 Concen: 0.337 ug/l  
 RT: 12.71 min Scan# 3412  
 Delta R.T. 0.00 min  
 Lab File: VN063493.D  
 Acq: 21 Sep 2020 18:08

Tgt Ion	Resp	Lower	Upper
105	100		
120	49.0	22.9	68.8

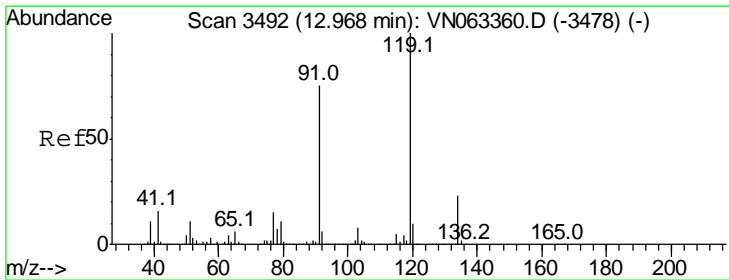
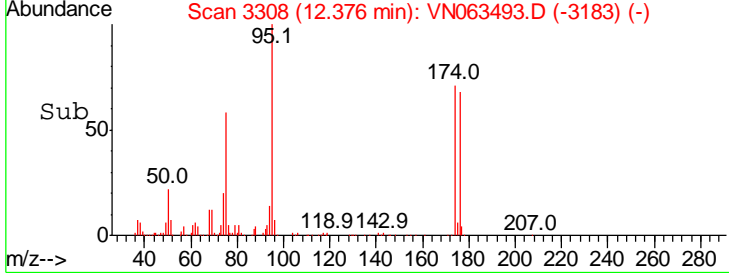
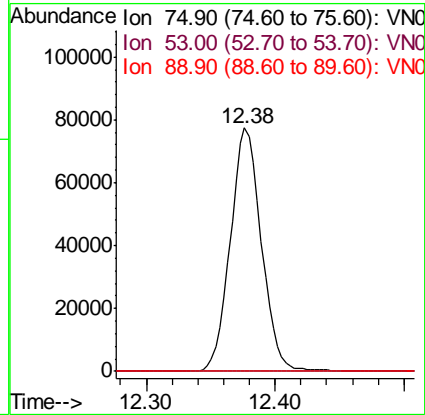
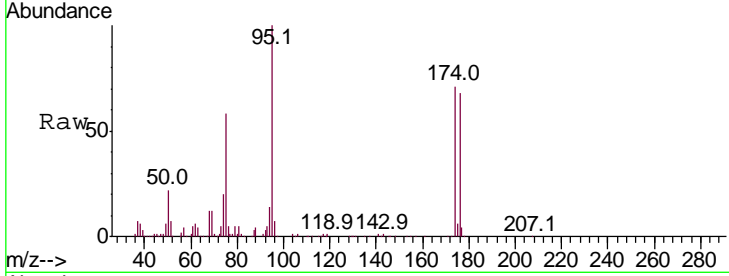




#81  
 trans-1,4-Dichloro-2-butene  
 Concen: 71.245 ug/l  
 RT: 12.38 min Scan# 3308  
 Delta R.T. 0.10 min  
 Lab File: VN063493.D  
 Acq: 21 Sep 2020 18:08

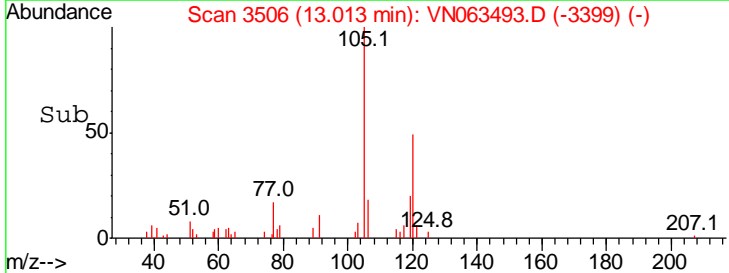
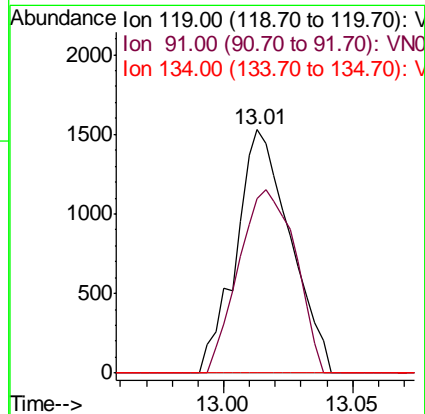
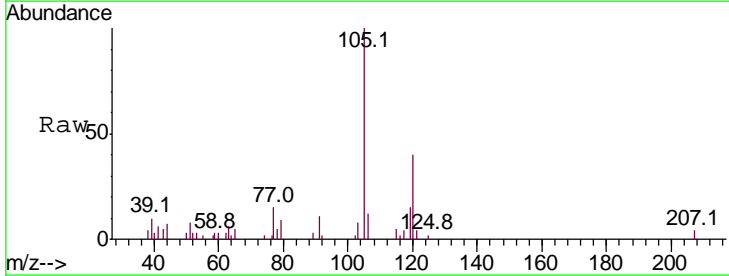
Instrument :  
 MSVOA\_N  
 ClientSampleId :  
 JA-DRUM-COMPME

Tgt Ion	Resp	Lower	Upper
75	100		
53	0.0	85.7	128.5#
89	0.0	38.0	57.0#

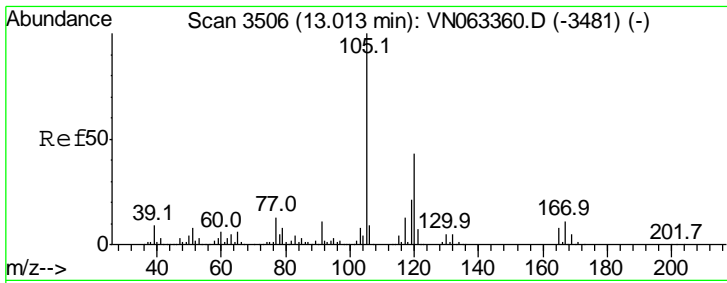


#83  
 tert-Butylbenzene  
 Concen: 0.202 ug/l  
 RT: 13.01 min Scan# 3506  
 Delta R.T. 0.04 min  
 Lab File: VN063493.D  
 Acq: 21 Sep 2020 18:08

Tgt Ion	Resp	Lower	Upper
119	100		
91	79.3	36.3	108.9
134	0.0	12.3	36.8#



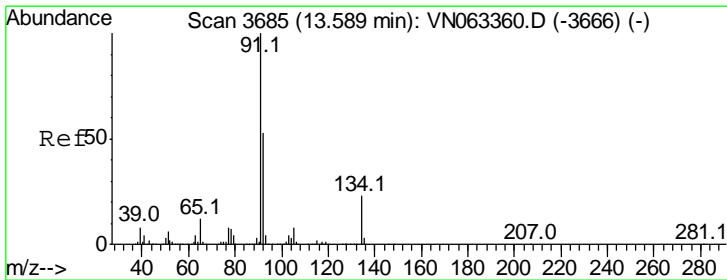
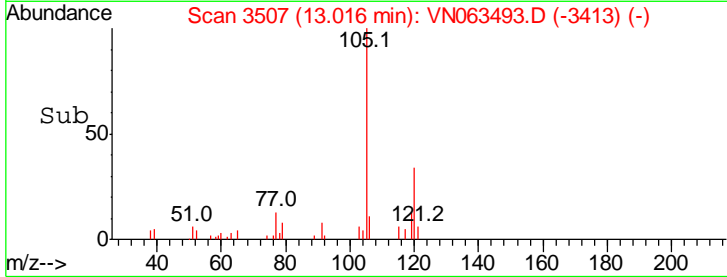
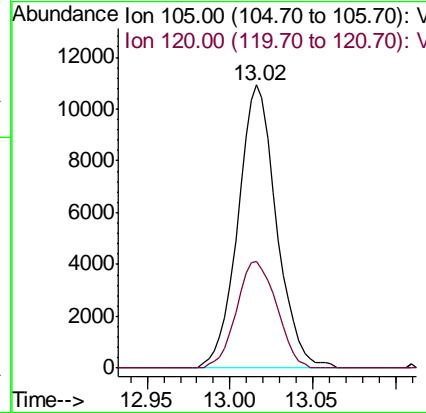
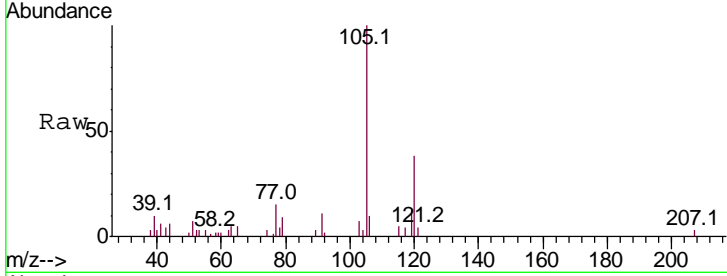




#84  
 1,2,4-Trimethylbenzene  
 Concen: 1.302 ug/l  
 RT: 13.02 min Scan# 3507  
 Delta R.T. 0.00 min  
 Lab File: VN063493.D  
 Acq: 21 Sep 2020 18:08

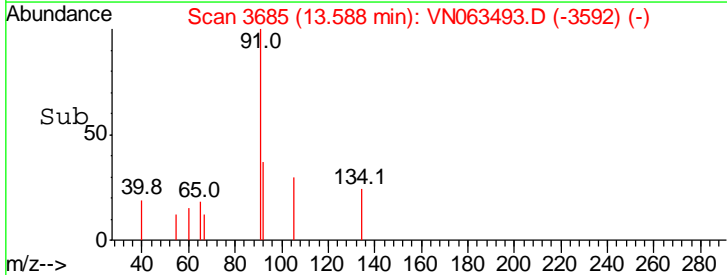
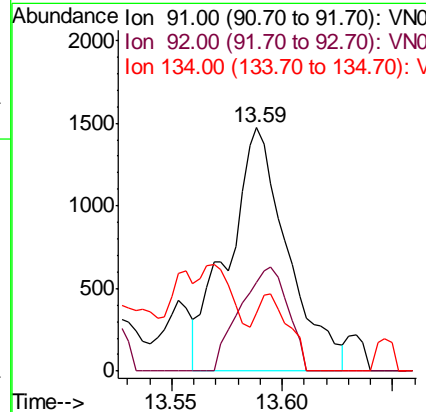
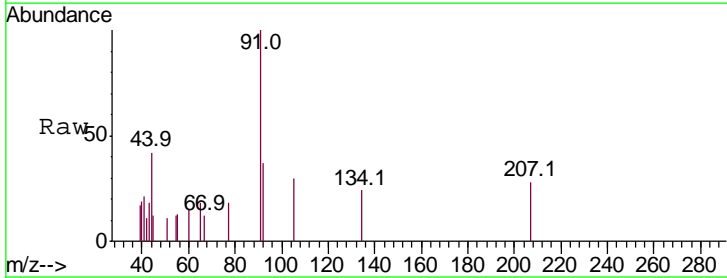
Instrument :  
 MSVOA\_N  
 ClientSampled :  
 JA-DRUM-COMPME

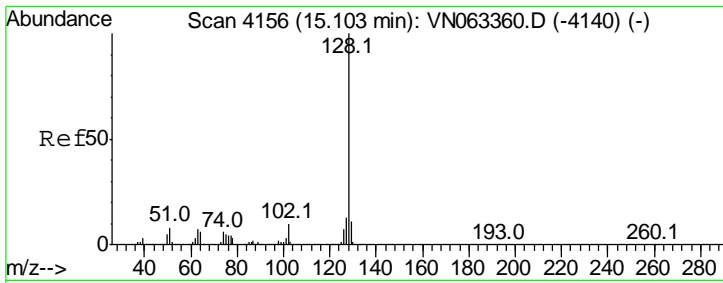
Tgt Ion	Resp	Lower	Upper
105	100		
120	39.2	21.3	63.9



#89  
 n-Butylbenzene  
 Concen: 0.227 ug/l  
 RT: 13.59 min Scan# 3685  
 Delta R.T. -0.00 min  
 Lab File: VN063493.D  
 Acq: 21 Sep 2020 18:08

Tgt Ion	Resp	Lower	Upper
91	100		
92	34.6	26.0	78.0
134	16.9	11.7	35.0





#95  
 Naphthalene  
 Concen: 0.212 ug/l  
 RT: 15.11 min Scan# 4159  
 Delta R.T. 0.01 min  
 Lab File: VN063493.D  
 Acq: 21 Sep 2020 18:08

Instrument : MSVOA\_N  
 ClientSampled : JA-DRUM-COMPME

Tot Ion	Ratio	Lower	Upper
128	100		
127	5.4	10.6	15.8#
129	0.0	8.8	13.2#

