

Data Path : Z:\VOASRV\HPCHEM1\MSVOA N\DATA\VN092220\  
 Data File : VN063570.D  
 Acq On : 23 Sep 2020 7:16  
 Operator : JC/MD  
 Sample : L3864-15  
 Misc : 5.00mL/MSVOA N/WATER  
 ALS Vial : 49 Sample Multiplier: 1

Instrument :  
 MSVOA\_N  
 ClientSampleId :  
 CL-02-092120

Quant Time: Sep 23 07:41:13 2020  
 Quant Method : Z:\VOASRV\HPCHEM1\MSVOA\_N\METHODS\82N091620W.M  
 Quant Title : SW846 8260  
 QLast Update : Wed Sep 16 13:05:20 2020  
 Response via : Initial Calibration

Internal Standards	R.T.	QIon	Response	Conc	Units	Dev(Min)
1) Pentafluorobenzene	7.63	168	208634	50.00	ug/l	0.00
34) 1,4-Difluorobenzene	8.55	114	401700	50.00	ug/l	0.00
63) Chlorobenzene-d5	11.38	117	406282	50.00	ug/l	0.00
72) 1,4-Dichlorobenzene-d4	13.32	152	173080	50.00	ug/l	0.00

System Monitoring Compounds	R.T.	QIon	Response	Conc	Units	Dev(Min)
33) 1,2-Dichloroethane-d4	7.99	65	179684	50.59	ug/l	0.00
Spiked Amount				50.000		
			Recovery	=	101.18%	
35) Dibromofluoromethane	7.55	113	131488	47.28	ug/l	0.00
Spiked Amount				50.000		
			Recovery	=	94.56%	
50) Toluene-d8	10.06	98	515524	49.30	ug/l	0.00
Spiked Amount				50.000		
			Recovery	=	98.60%	
62) 4-Bromofluorobenzene	12.38	95	198310	51.73	ug/l	0.00
Spiked Amount				50.000		
			Recovery	=	103.46%	

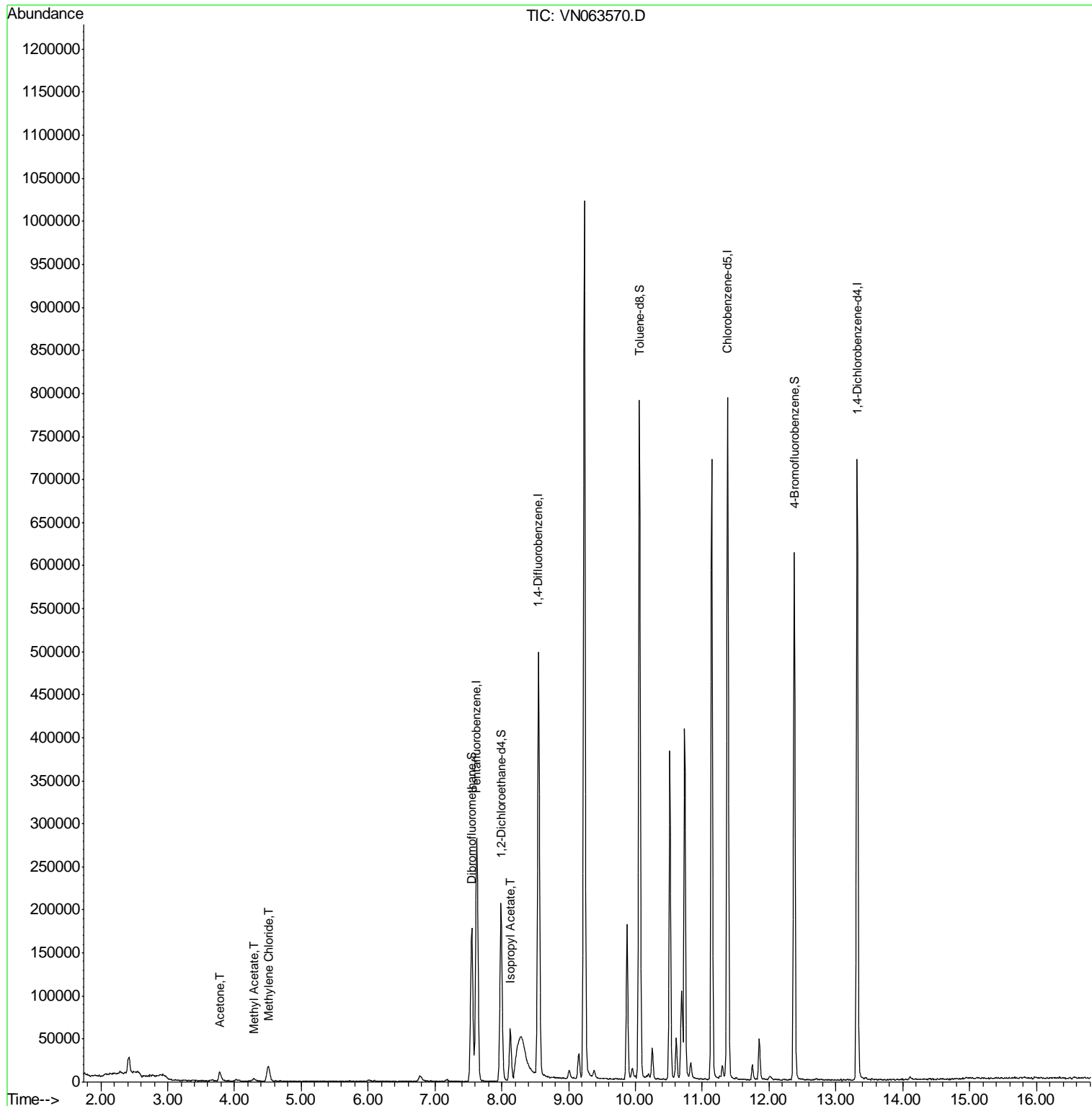
Target Compounds	R.T.	QIon	Response	Conc	Units	Qvalue
16) Acetone	3.78	43	19898	17.433	ug/l	96
18) Methyl Acetate	4.29	43	3758	1.297	ug/l #	76
20) Methylene Chloride	4.51	84	13240	4.578	ug/l	93
43) Isopropyl Acetate	8.13	43	73131	9.737	ug/l	99

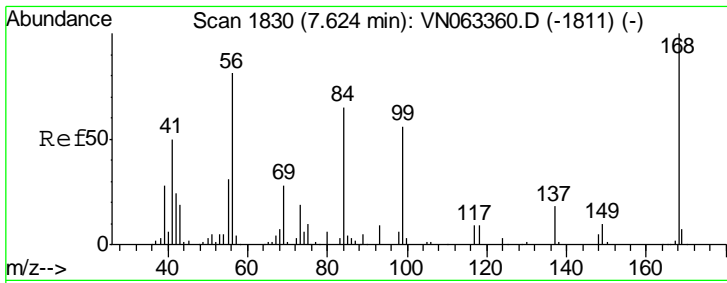
(#) = qualifier out of range (m) = manual integration (+) = signals summed

Data Path : Z:\VOASRV\HPCHEM1\MSVOA N\DATA\VN092220\  
 Data File : VN063570.D  
 Acq On : 23 Sep 2020 7:16  
 Operator : JC/MD  
 Sample : L3864-15  
 Misc : 5.00mL/MSVOA N/WATER  
 ALS Vial : 49 Sample Multiplier: 1

Instrument :  
 MSVOA\_N  
 ClientSampleId :  
 CL-02-092120

Quant Time: Sep 23 07:41:13 2020  
 Quant Method : Z:\VOASRV\HPCHEM1\MSVOA\_N\METHODS\82N091620W.M  
 Quant Title : SW846 8260  
 QLast Update : Wed Sep 16 13:05:20 2020  
 Response via : Initial Calibration

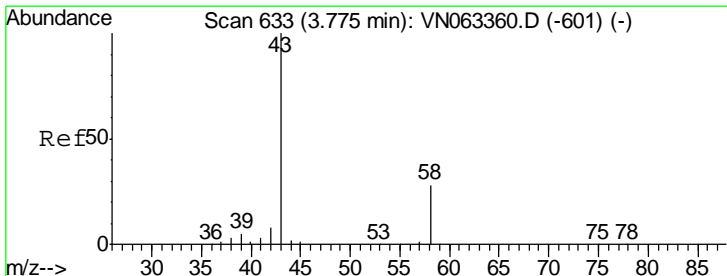
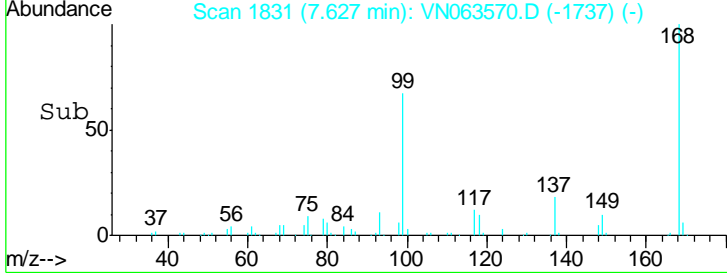
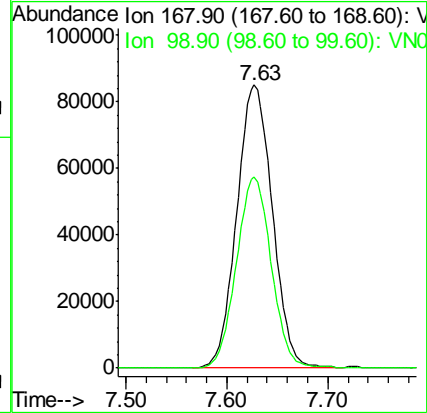
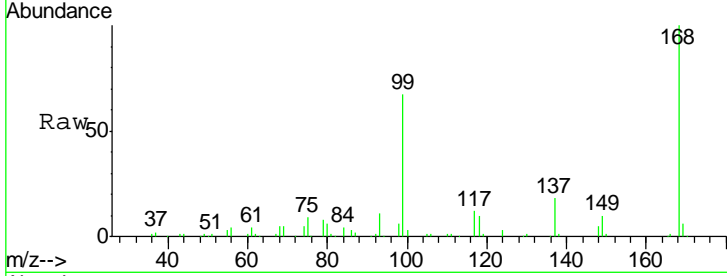




#1  
 Pentafluorobenzene  
 Concen: 50.000 ug/l  
 RT: 7.63 min Scan# 1831  
 Delta R.T. 0.00 min  
 Lab File: VN063570.D  
 Acq: 23 Sep 2020 7:16

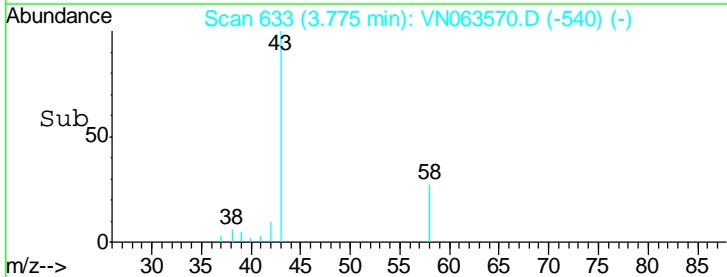
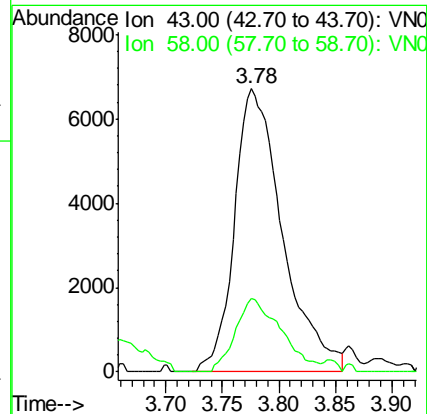
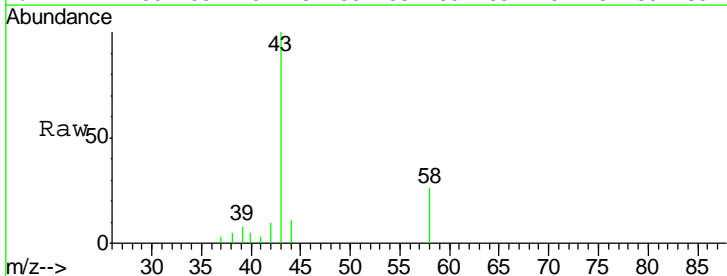
Instrument :  
 MSVOA\_N  
 ClientSampled :  
 CL-02-092120

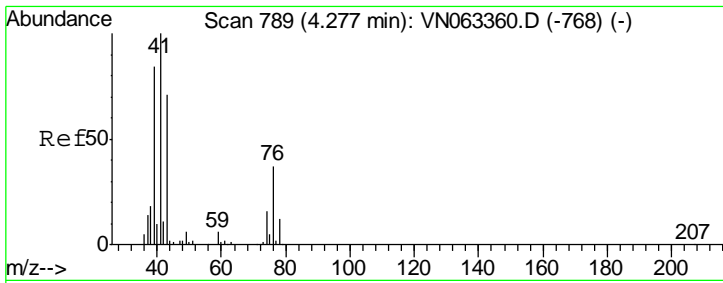
Tot Ion: 168 Resp: 208634  
 Ion Ratio Lower Upper  
 168 100  
 99 67.4 53.0 79.6



#16  
 Acetone  
 Concen: 17.433 ug/l  
 RT: 3.78 min Scan# 633  
 Delta R.T. -0.00 min  
 Lab File: VN063570.D  
 Acq: 23 Sep 2020 7:16

Tgt Ion: 43 Resp: 19898  
 Ion Ratio Lower Upper  
 43 100  
 58 25.8 22.3 33.5

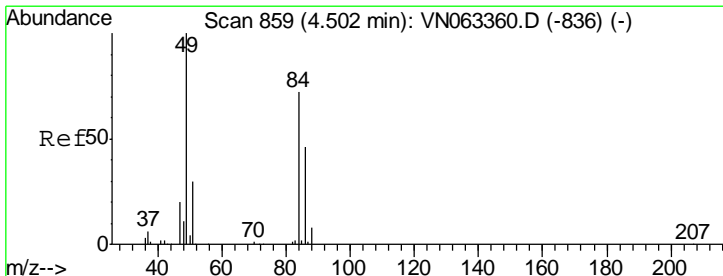
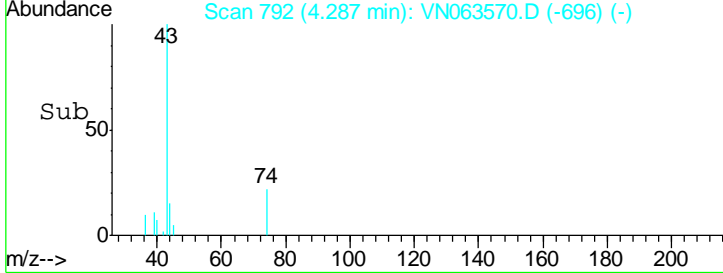
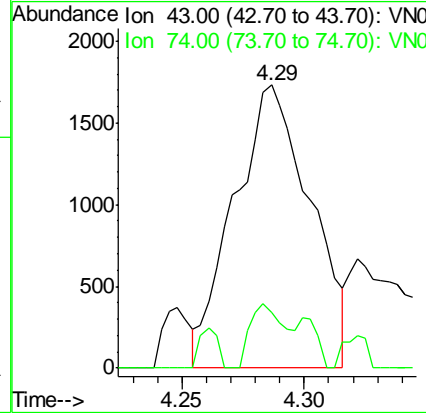
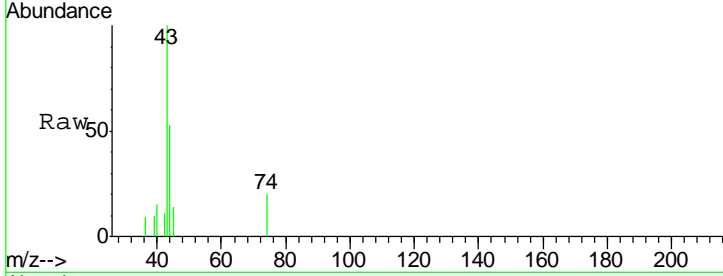




#18  
 Methyl Acetate  
 Concen: 1.297 ug/l  
 RT: 4.29 min Scan# 792  
 Delta R.T. 0.01 min  
 Lab File: VN063570.D  
 Acq: 23 Sep 2020 7:16

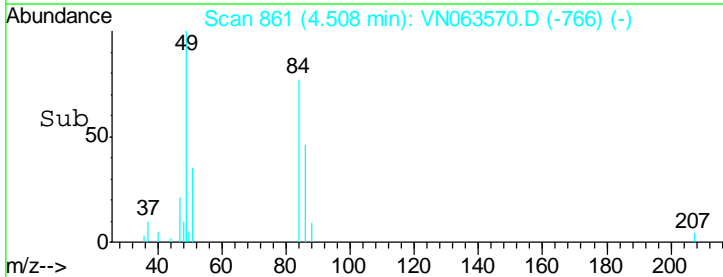
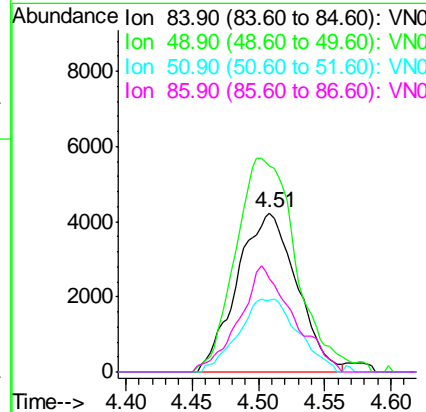
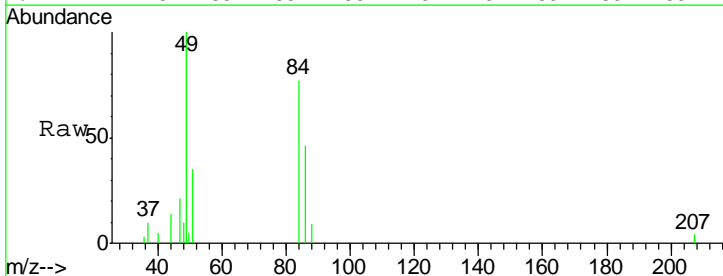
Instrument :  
 MSVOA\_N  
 ClientSampled :  
 CL-02-092120

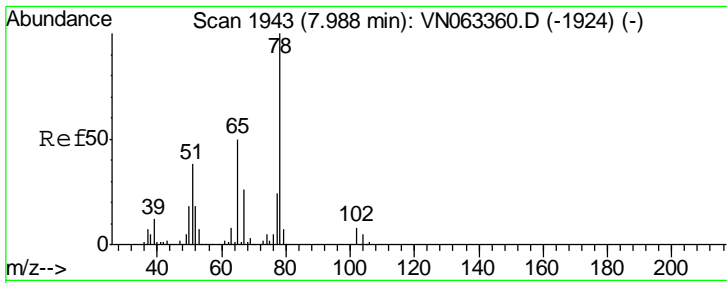
Tgt Ion: 43 Resp: 3758  
 Ion Ratio Lower Upper  
 43 100  
 74 10.6 17.4 26.2#



#20  
 Methylene Chloride  
 Concen: 4.578 ug/l  
 RT: 4.51 min Scan# 861  
 Delta R.T. 0.01 min  
 Lab File: VN063570.D  
 Acq: 23 Sep 2020 7:16

Tgt Ion: 84 Resp: 13240  
 Ion Ratio Lower Upper  
 84 100  
 49 129.5 110.7 166.1  
 51 45.2 32.9 49.3  
 86 59.0 51.1 76.7

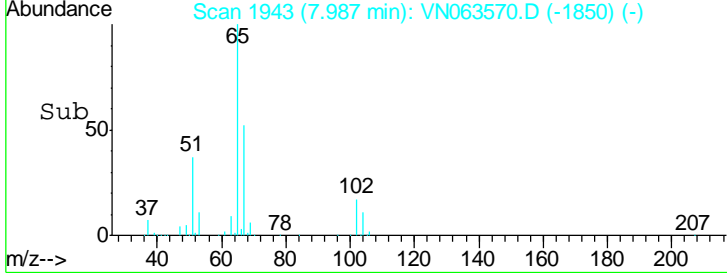
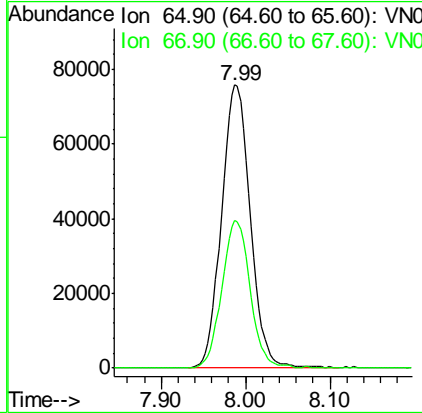
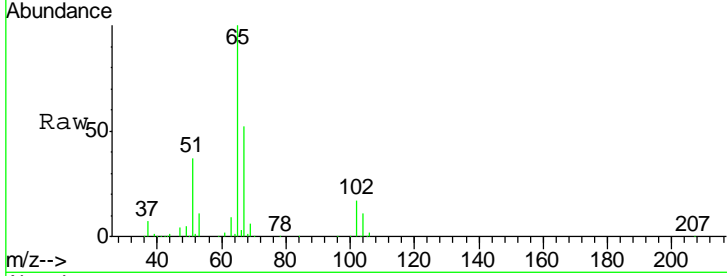




#33  
 1,2-Dichloroethane-d4  
 Concen: 50.594 ug/l  
 RT: 7.99 min Scan# 1943  
 Delta R.T. -0.00 min  
 Lab File: VN063570.D  
 Acq: 23 Sep 2020 7:16

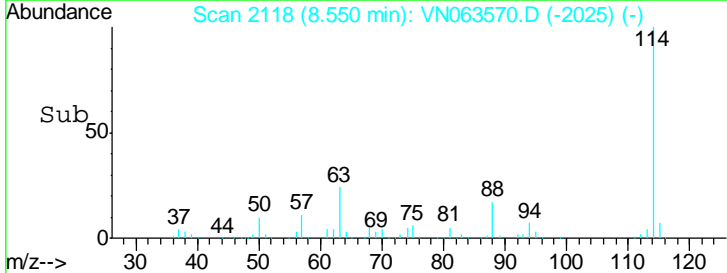
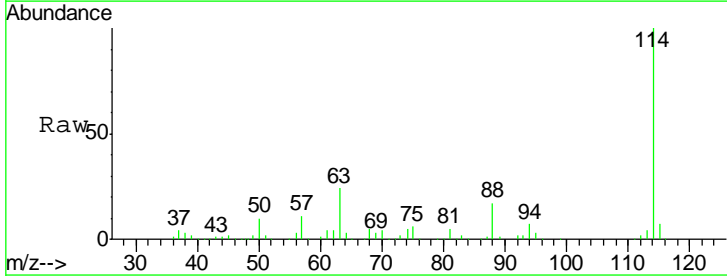
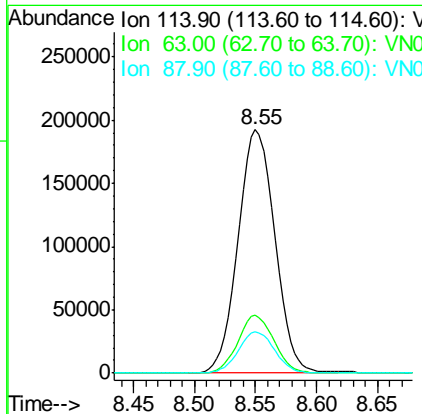
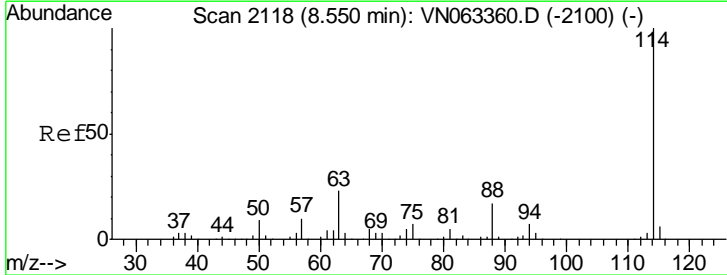
**Instrument :**  
 MSVOA\_N  
**ClientSampled :**  
 CL-02-092120

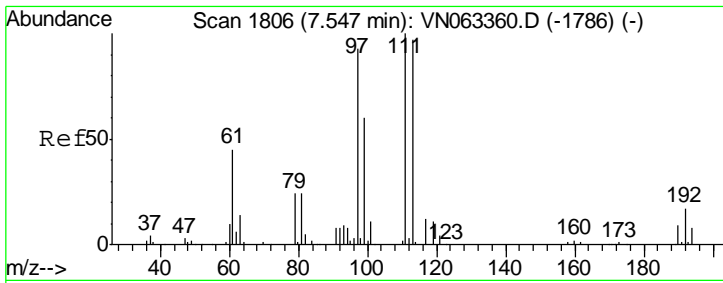
Tgt Ion	Resp	Lower	Upper
65	179684		
65	100		
67	51.2	0.0	104.2



#34  
 1,4-Difluorobenzene  
 Concen: 50.000 ug/l  
 RT: 8.55 min Scan# 2118  
 Delta R.T. -0.00 min  
 Lab File: VN063570.D  
 Acq: 23 Sep 2020 7:16

Tgt Ion	Resp	Lower	Upper
114	401700		
114	100		
63	23.9	0.0	46.4
88	16.8	0.0	33.2

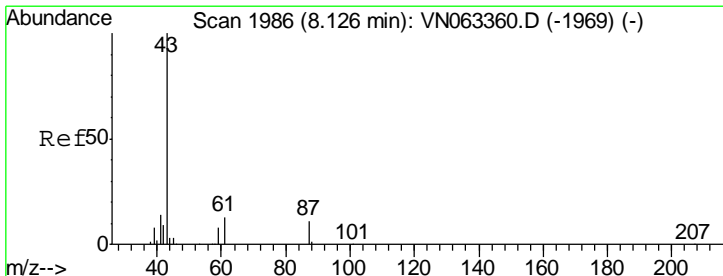
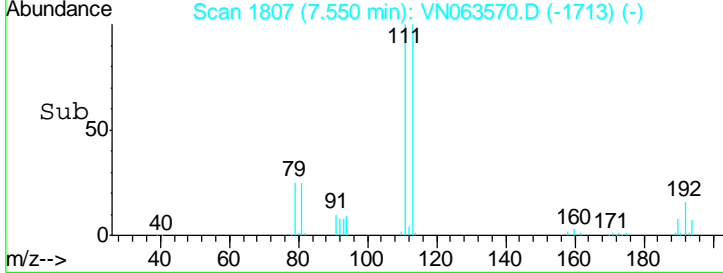
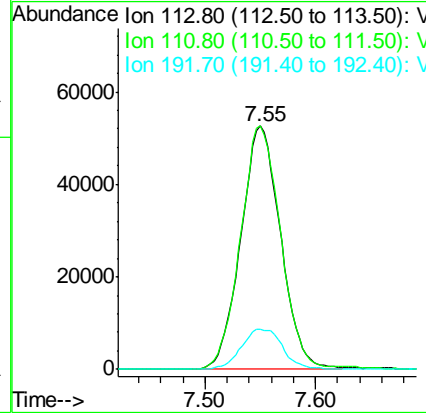
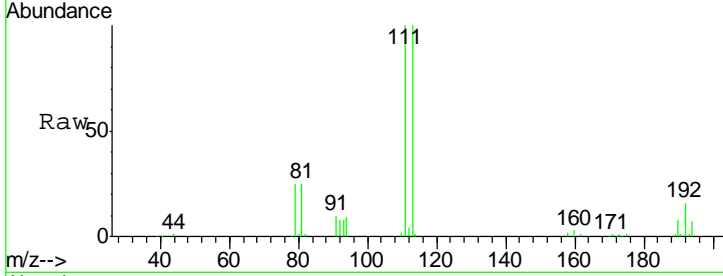




#35  
 Dibromofluoromethane  
 Concen: 47.283 ug/l  
 RT: 7.55 min Scan# 1807  
 Delta R.T. 0.00 min  
 Lab File: VN063570.D  
 Acq: 23 Sep 2020 7:16

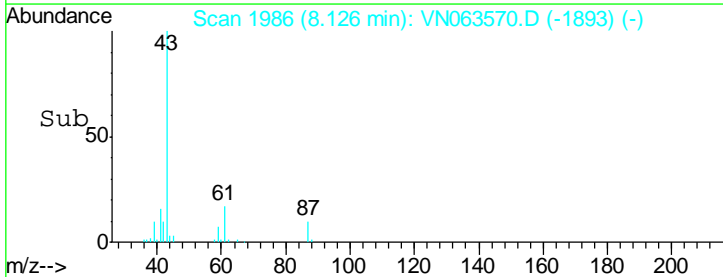
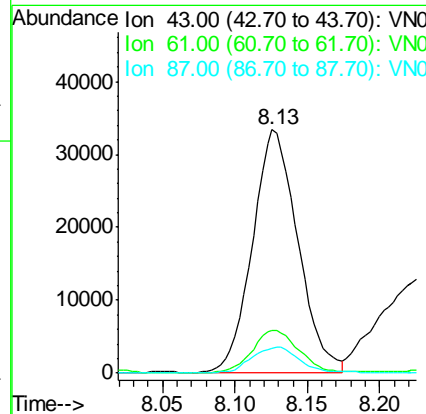
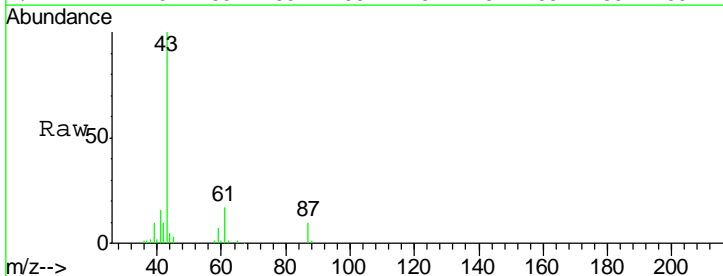
Instrument :  
 MSVOA\_N  
 ClientSampleId :  
 CL-02-092120

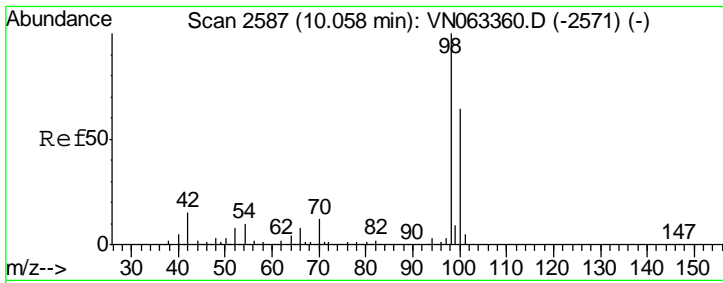
Tgt Ion	Resp	Lower	Upper
113	131488		
111	100.5	82.9	124.3
192	17.2	13.9	20.9



#43  
 Isopropyl Acetate  
 Concen: 9.737 ug/l  
 RT: 8.13 min Scan# 1986  
 Delta R.T. -0.00 min  
 Lab File: VN063570.D  
 Acq: 23 Sep 2020 7:16

Tgt Ion	Resp	Lower	Upper
43	73131		
61	18.0	14.2	21.2
87	10.9	9.0	13.6

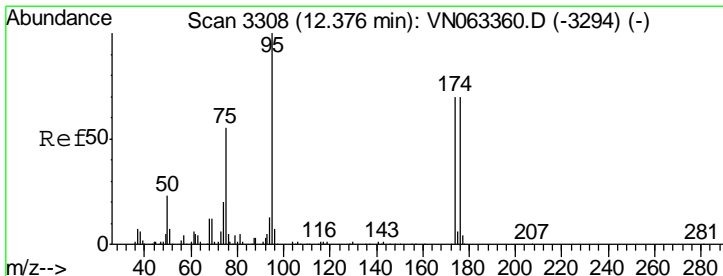
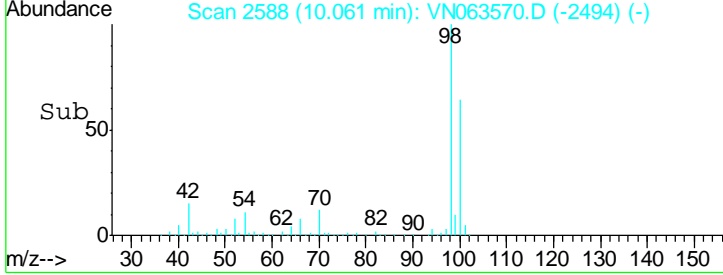
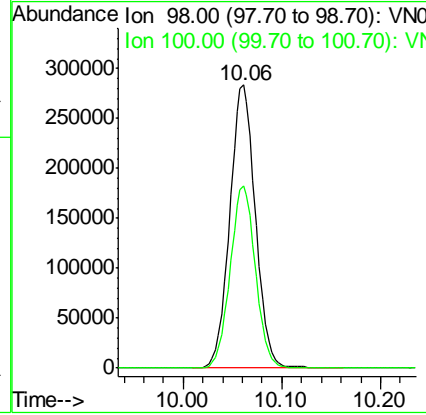
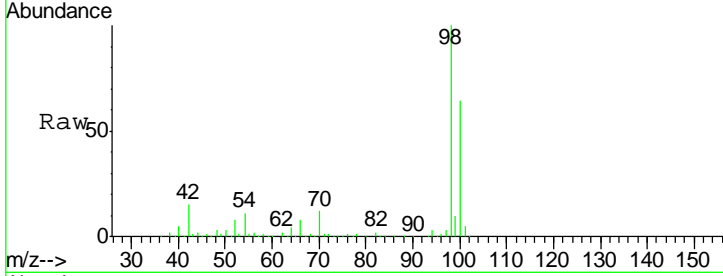




#50  
 Toluene-d8  
 Concen: 49.301 ug/l  
 RT: 10.06 min Scan# 2588  
 Delta R.T. 0.00 min  
 Lab File: VN063570.D  
 Acq: 23 Sep 2020 7:16

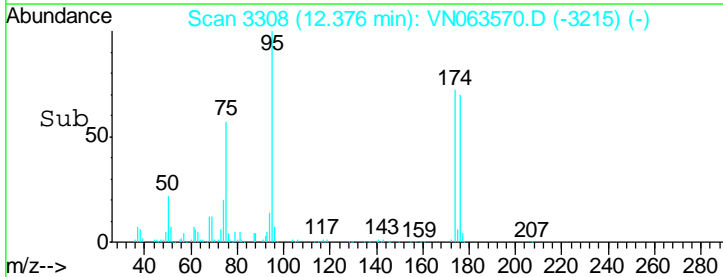
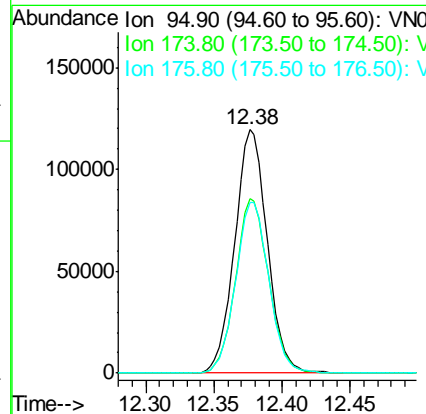
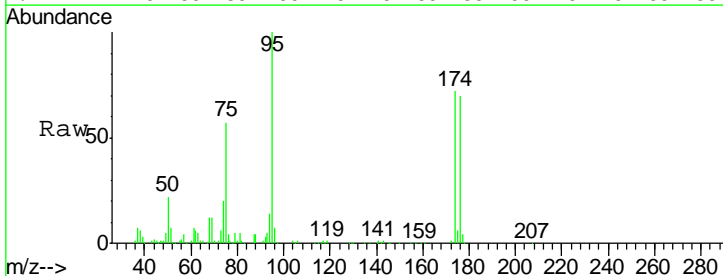
**Instrument :**  
 MSVOA\_N  
**ClientSampled :**  
 CL-02-092120

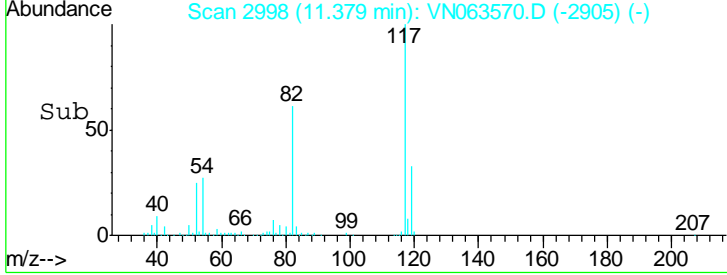
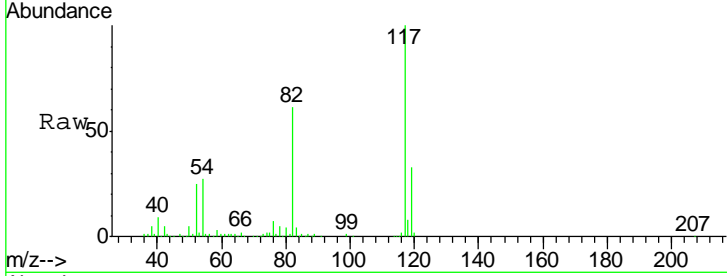
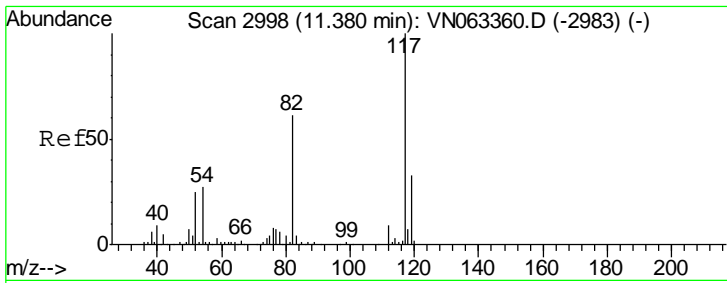
Tgt Ion	Resp	Lower	Upper
98	51524		
100	63.7	50.7	76.1



#62  
 4-Bromofluorobenzene  
 Concen: 51.735 ug/l  
 RT: 12.38 min Scan# 3308  
 Delta R.T. -0.00 min  
 Lab File: VN063570.D  
 Acq: 23 Sep 2020 7:16

Tgt Ion	Resp	Lower	Upper
95	198310		
174	72.9	0.0	140.8
176	71.5	0.0	137.6

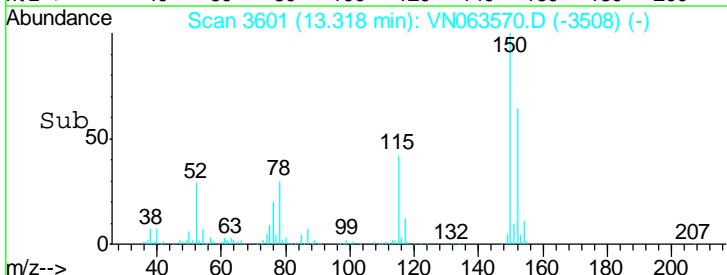
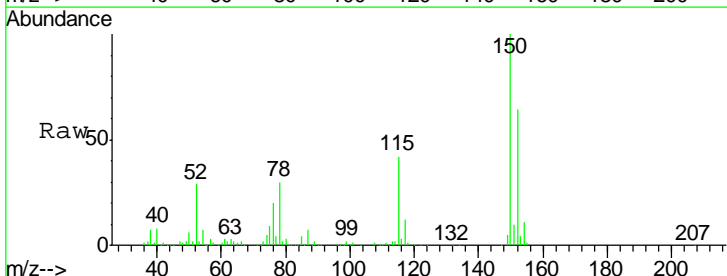
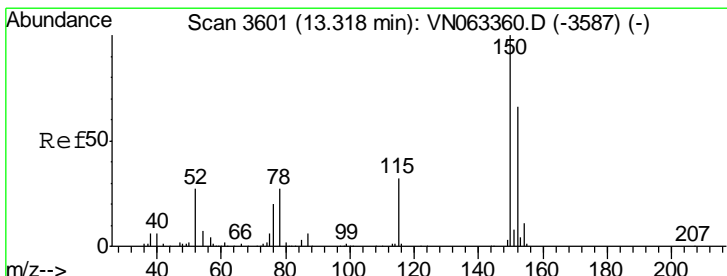
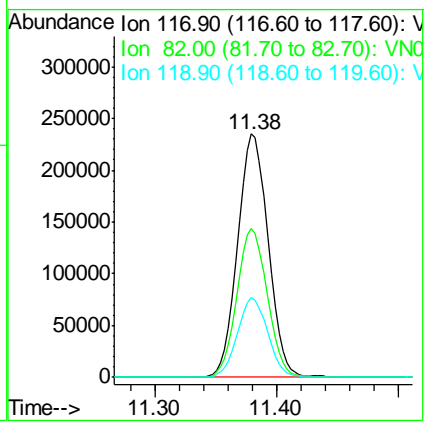




#63  
 Chlorobenzene-d5  
 Concen: 50.000 ug/l  
 RT: 11.38 min Scan# 2998  
 Delta R.T. -0.00 min  
 Lab File: VN063570.D  
 Acq: 23 Sep 2020 7:16

Instrument : MSVOA\_N  
 ClientSampled : CL-02-092120

Tgt Ion	Resp	Lower	Upper
117	406282		
82	61.3	49.2	73.8
119	32.8	26.2	39.4



#72  
 1,4-Dichlorobenzene-d4  
 Concen: 50.000 ug/l  
 RT: 13.32 min Scan# 3601  
 Delta R.T. -0.00 min  
 Lab File: VN063570.D  
 Acq: 23 Sep 2020 7:16

Tgt Ion	Resp	Lower	Upper
152	173080		
115	63.6	32.2	96.6
150	156.9	0.0	343.4

