

Data Path : Z:\VOASRV\HPCHEM1\MSVOA_N\DATA\VN092318\
 Data File : VN051416.D
 Acq On : 23 Sep 2018 16:26
 Operator : MD\SY
 Sample : J5021-04
 Misc : 5.00mL/MSVOA_N/WATER
 ALS Vial : 17 Sample Multiplier: 1

Instrument :
 MSVOA_N
 ClientSampled :
 LS-SOIL-A

Quant Time: Sep 24 06:47:06 2018
 Quant Method : Z:\VOASRV\HPCHEM1\MSVOA_N\METHODS\82N092318W.M
 Quant Title : SW846 8260
 QLast Update : Mon Sep 24 06:41:32 2018
 Response via : Initial Calibration

Internal Standards	R.T.	QIon	Response	Conc	Units	Dev(Min)
1) Pentafluorobenzene	7.67	168	656014	50.00	ug/l	0.00
34) 1,4-Difluorobenzene	8.59	114	1015574	50.00	ug/l	0.00
63) Chlorobenzene-d5	11.41	117	851590	50.00	ug/l	0.00
72) 1,4-Dichlorobenzene-d4	13.35	152	316887	50.00	ug/l	0.00

System Monitoring Compounds

33) 1,2-Dichloroethane-d4	8.03	65	443846	54.01	ug/l	0.00
Spiked Amount	50.000		Recovery	=	108.02%	
35) Dibromofluoromethane	7.59	113	392175	48.29	ug/l	0.00
Spiked Amount	50.000		Recovery	=	96.58%	
50) Toluene-d8	10.09	98	1395652	45.64	ug/l	0.00
Spiked Amount	50.000		Recovery	=	91.28%	
62) 4-Bromofluorobenzene	12.40	95	386986	39.12	ug/l	0.00
Spiked Amount	50.000		Recovery	=	78.24%	

Target Compounds

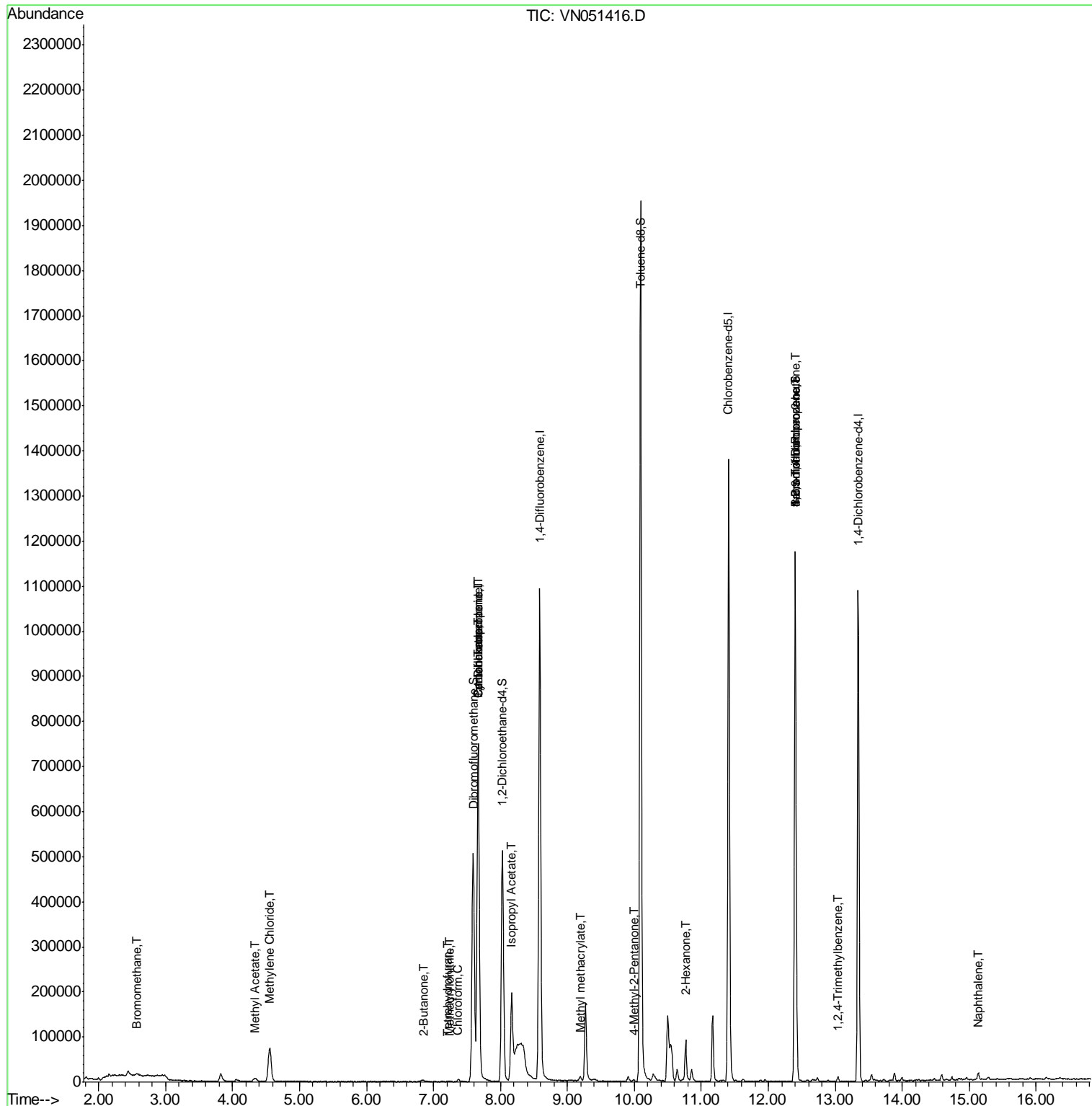
					Qvalue	
5) Bromomethane	2.57	94	1310	0.262	ug/l #	79
16) Acetone	3.82	43	27915	Below	Cal	93
18) Methyl Acetate	4.33	43	15839	2.531	ug/l #	71
20) Methylene Chloride	4.56	84	55749	6.856	ug/l	95
25) 2-Butanone	6.85	43	4573	1.626	ug/l #	68
29) Tetrahydrofuran	7.22	42	1507	0.845	ug/l #	54
30) Chloroform	7.37	83	4304	0.308	ug/l	93
31) Cyclohexane	7.67	56	12742	0.985	ug/l #	1
36) 1,1-Dichloropropene	7.67	75	46097	3.920	ug/l #	48
38) Carbon Tetrachloride	7.67	117	58144	4.727	ug/l #	16
41) Methacrylonitrile	7.22	41	928	0.248	ug/l #	21
43) Isopropyl Acetate	8.17	43	245770	20.100	ug/l	94
48) Methyl methacrylate	9.19	41	5794	0.950	ug/l #	21
51) 4-Methyl-2-Pentanone	9.99	43	2122	0.316	ug/l #	87
59) 2-Hexanone	10.76	43	13008	2.984	ug/l #	60
71) Bromoform	12.40	173	4232	0.749	ug/l #	1
76) 1,2,3-Trichloropropane	12.40	75	192847	36.659	ug/l #	100
81) trans-1,4-Dichloro-2-buten	12.40	75	192847	112.725	ug/l #	12
84) 1,2,4-Trimethylbenzene	13.04	105	5850	0.266	ug/l	100
95) Naphthalene	15.13	128	13455	9.003	ug/l #	94

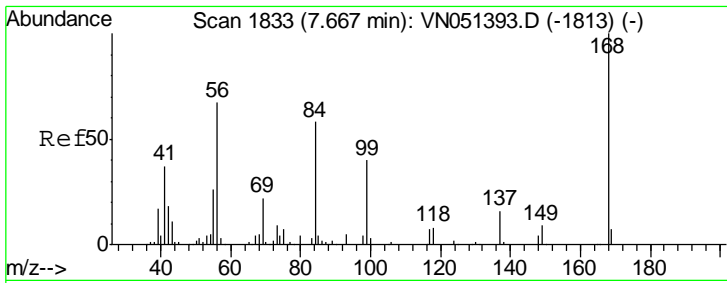
(#) = qualifier out of range (m) = manual integration (+) = signals summed

Data Path : Z:\VOASRV\HPCHEM1\MSVOA_N\DATA\VN092318\
 Data File : VN051416.D
 Acq On : 23 Sep 2018 16:26
 Operator : MD\SY
 Sample : J5021-04
 Misc : 5.00mL/MSVOA_N/WATER
 ALS Vial : 17 Sample Multiplier: 1

Instrument :
 MSVOA_N
 Client Sampled :
 LS-SOIL-A

Quant Time: Sep 24 06:47:06 2018
 Quant Method : Z:\VOASRV\HPCHEM1\MSVOA_N\METHODS\82N092318W.M
 Quant Title : SW846 8260
 QLast Update : Mon Sep 24 06:41:32 2018
 Response via : Initial Calibration

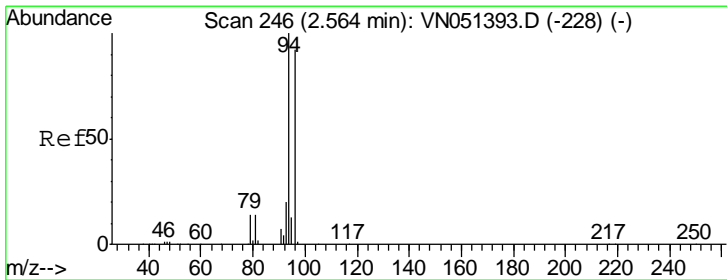
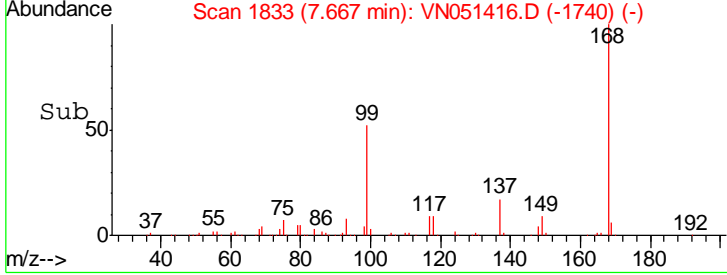
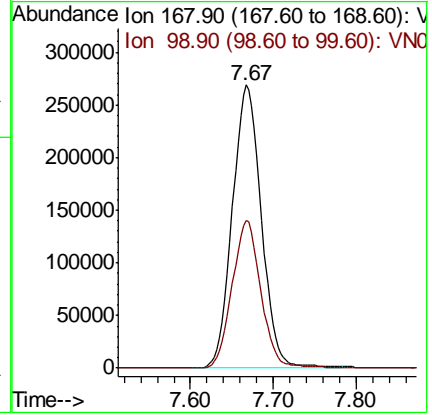
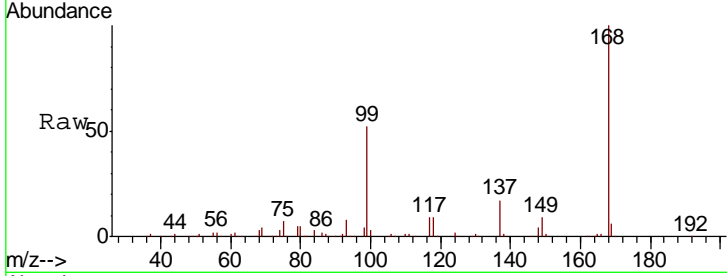




#1
 Pentafluorobenzene
 Concen: 50.000 ug/l
 RT: 7.67 min Scan# 1833
 Delta R.T. 0.00 min
 Lab File: VN051416.D
 Acq: 23 Sep 2018 16:26

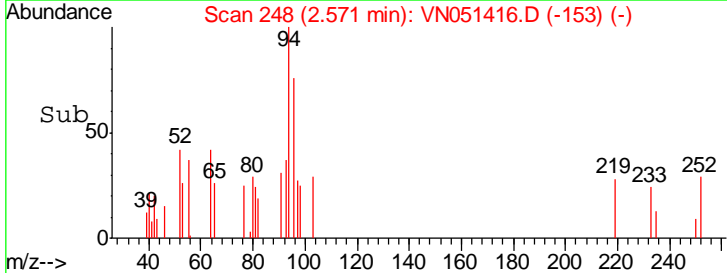
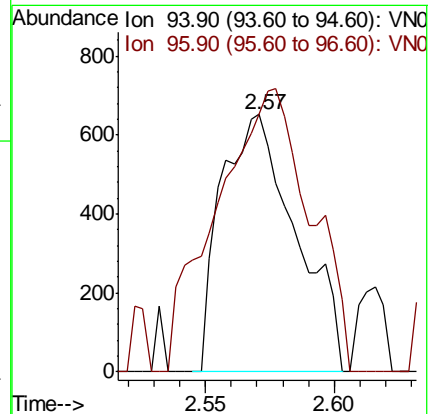
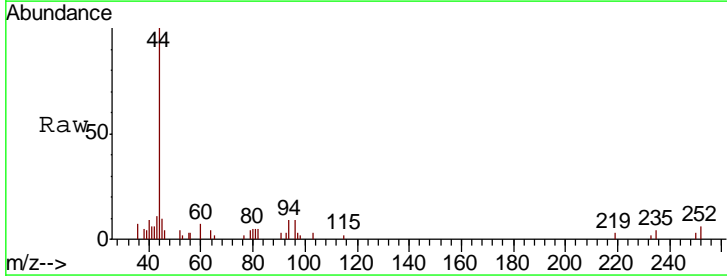
Instrument :
 MSVOA_N
 ClientSampled :
 LS-SOIL-A

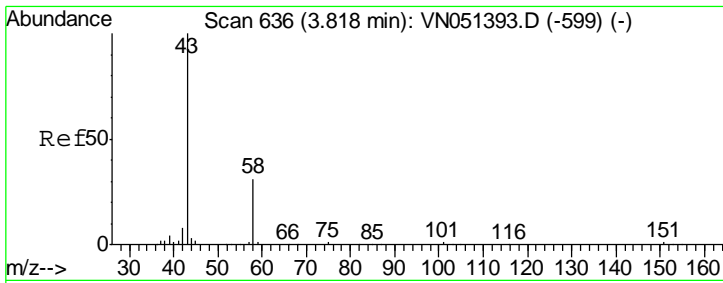
Tgt Ion: 168 Resp: 656014
 Ion Ratio Lower Upper
 168 100
 99 52.3 40.2 60.2



#5
 Bromomethane
 Concen: 0.262 ug/l
 RT: 2.57 min Scan# 248
 Delta R.T. 0.01 min
 Lab File: VN051416.D
 Acq: 23 Sep 2018 16:26

Tgt Ion: 94 Resp: 1310
 Ion Ratio Lower Upper
 94 100
 96 72.4 73.6 110.4#

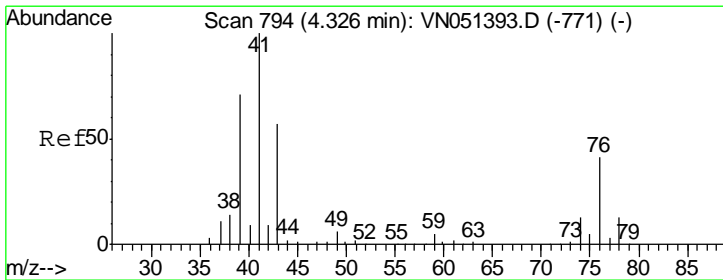
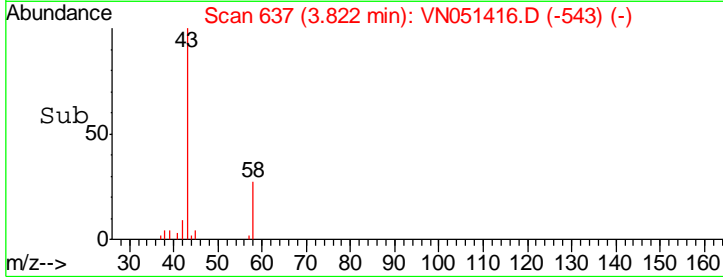
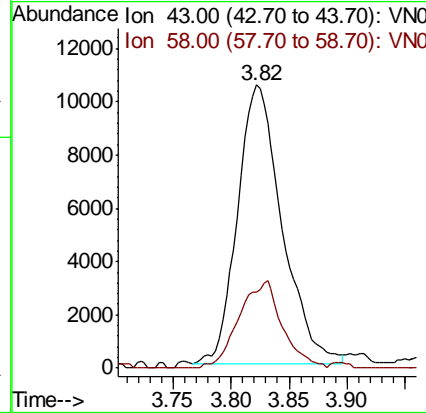
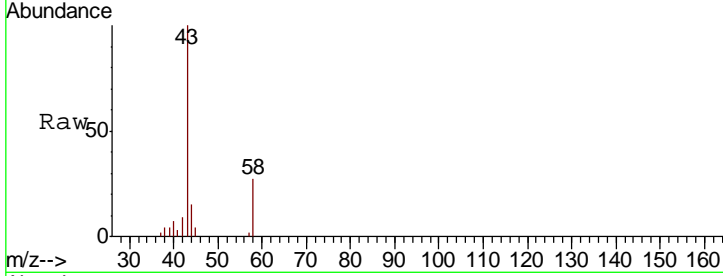




#16
 Acetone
 Concen: Below Cal
 RT: 3.82 min Scan# 637
 Delta R.T. 0.00 min
 Lab File: VN051416.D
 Acq: 23 Sep 2018 16:26

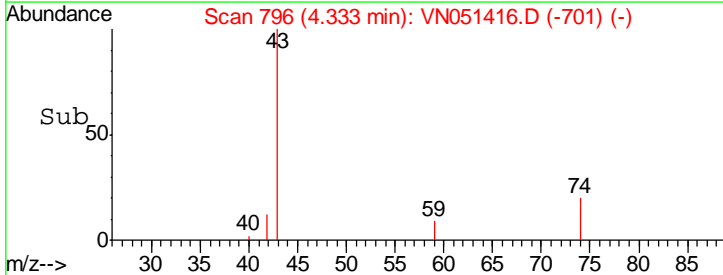
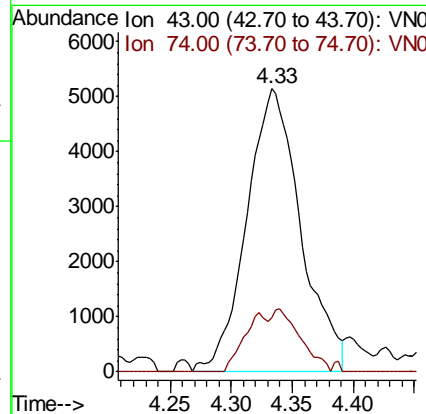
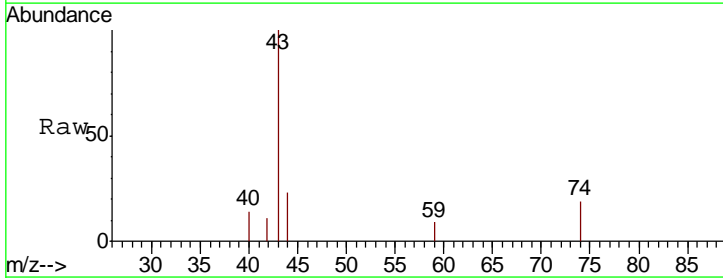
Instrument : MSVOA_N
 ClientSampled : LS-SOIL-A

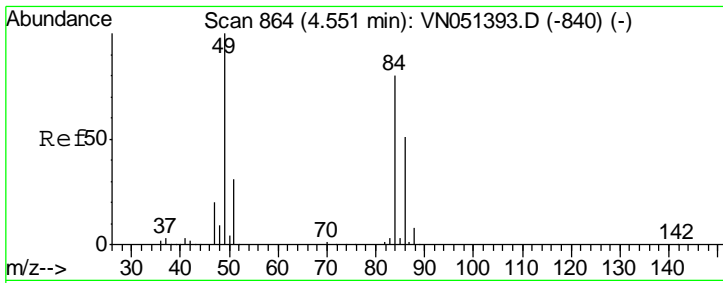
Tgt Ion	Resp	Lower	Upper
43	27915		
58	27.3	25.0	37.4



#18
 Methyl Acetate
 Concen: 2.531 ug/l
 RT: 4.33 min Scan# 796
 Delta R.T. 0.01 min
 Lab File: VN051416.D
 Acq: 23 Sep 2018 16:26

Tgt Ion	Resp	Lower	Upper
43	15839		
74	9.1	18.8	28.2#

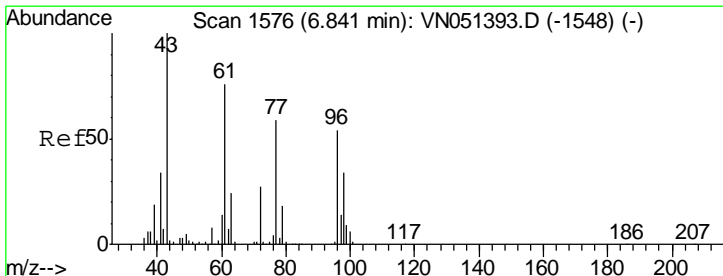
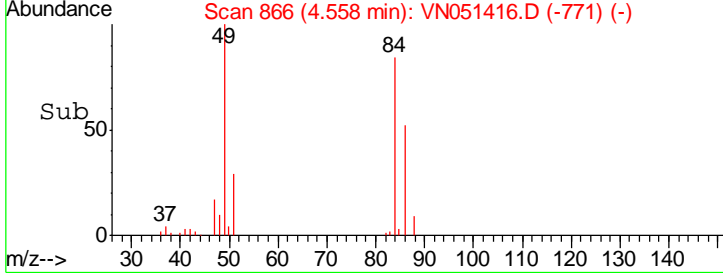
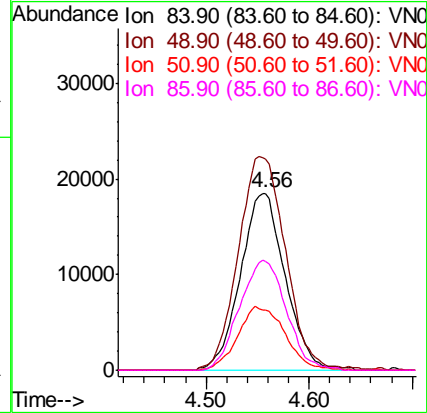
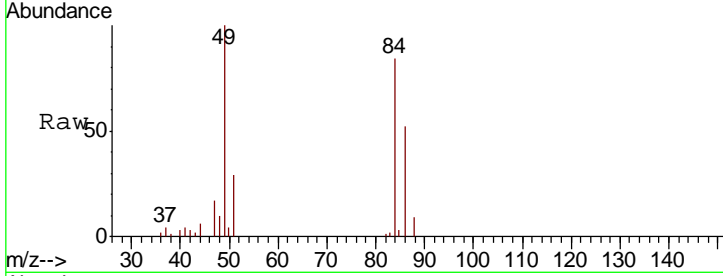




#20
 Methylene Chloride
 Concen: 6.856 ug/l
 RT: 4.56 min Scan# 866
 Delta R.T. 0.01 min
 Lab File: VN051416.D
 Acq: 23 Sep 2018 16:26

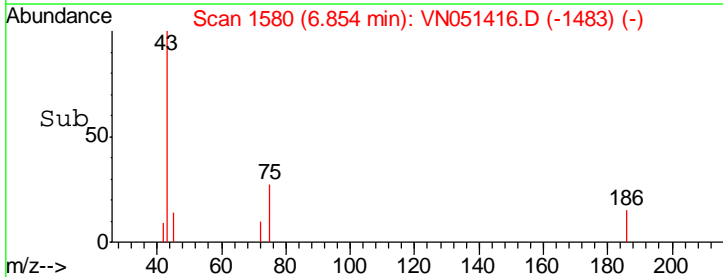
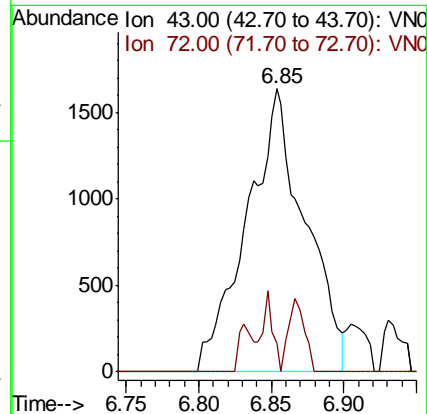
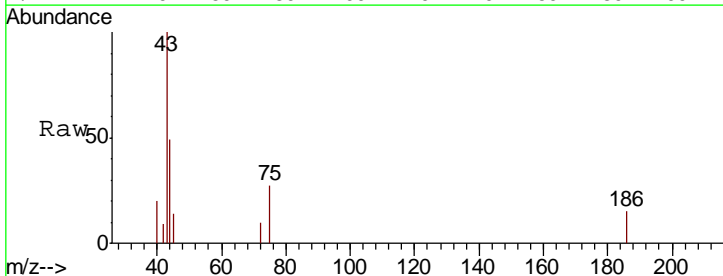
Instrument :
 MSVOA_N
 ClientSampled :
 LS-SOIL-A

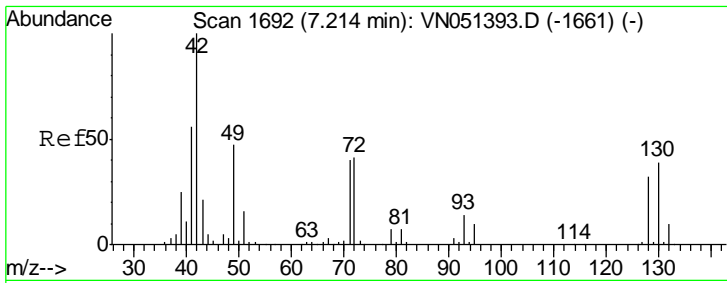
Tgt Ion	Resp	Lower	Upper
84	100		
49	119.0	99.9	149.9
51	34.1	31.4	47.2
86	61.7	50.9	76.3



#25
 2-Butanone
 Concen: 1.626 ug/l
 RT: 6.85 min Scan# 1580
 Delta R.T. 0.01 min
 Lab File: VN051416.D
 Acq: 23 Sep 2018 16:26

Tgt Ion	Resp	Lower	Upper
43	100		
72	10.3	21.8	32.6#



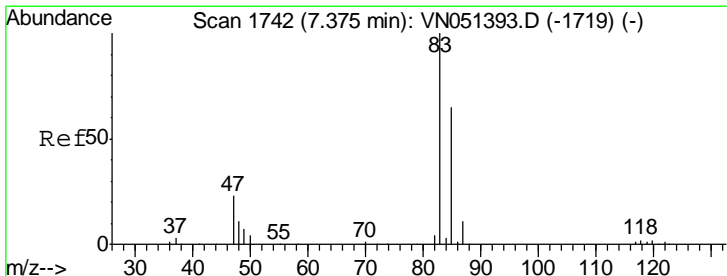
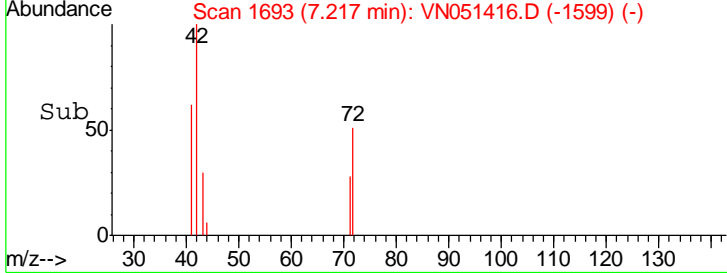
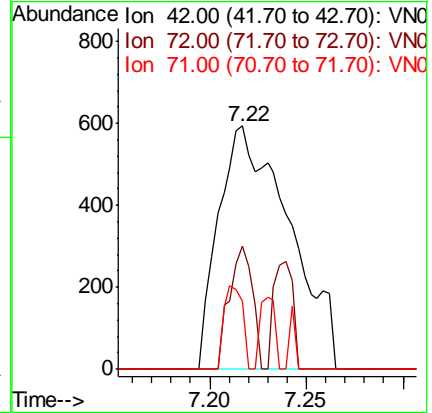
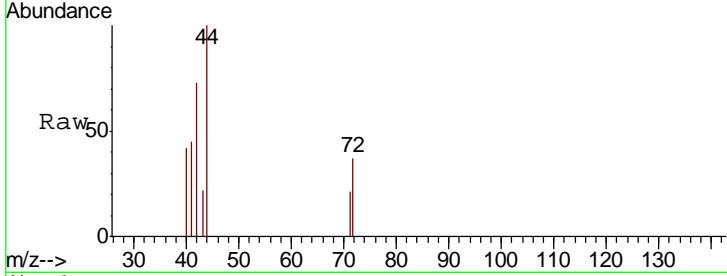


#29
 Tetrahydrofuran
 Concen: 0.845 ug/l
 RT: 7.22 min Scan# 1693
 Delta R.T. 0.00 min
 Lab File: VN051416.D
 Acq: 23 Sep 2018 16:26

Instrument :
 MSVOA_N
 ClientSampled :
 LS-SOIL-A

Tgt Ion: 42 Resp: 1507

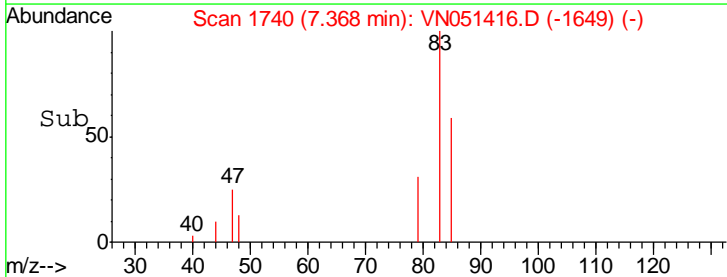
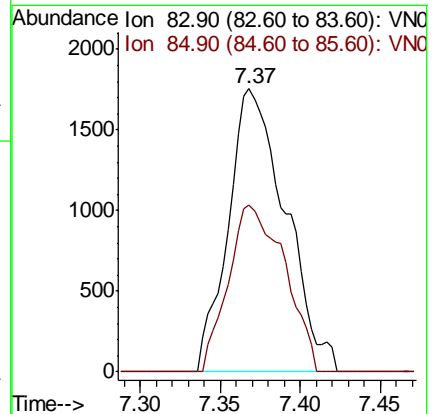
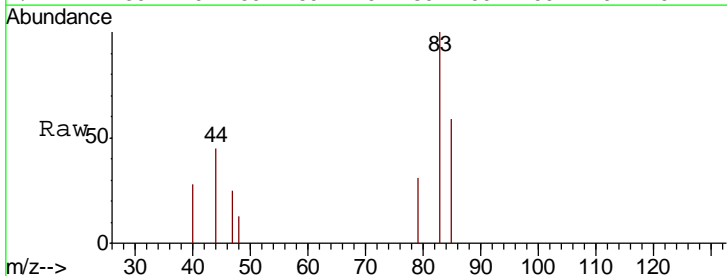
Ion	Ratio	Lower	Upper
42	100		
72	16.5	34.3	51.5#
71	9.2	32.2	48.4#

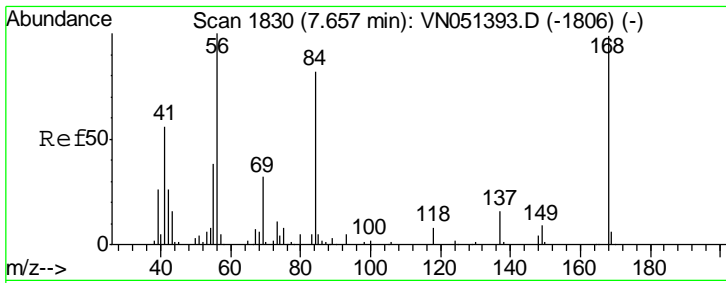


#30
 Chloroform
 Concen: 0.308 ug/l
 RT: 7.37 min Scan# 1740
 Delta R.T. -0.01 min
 Lab File: VN051416.D
 Acq: 23 Sep 2018 16:26

Tgt Ion: 83 Resp: 4304

Ion	Ratio	Lower	Upper
83	100		
85	58.8	51.8	77.6

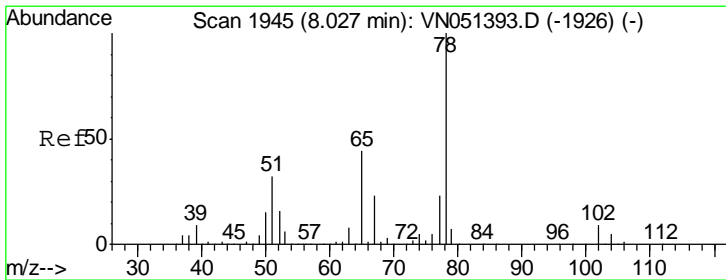
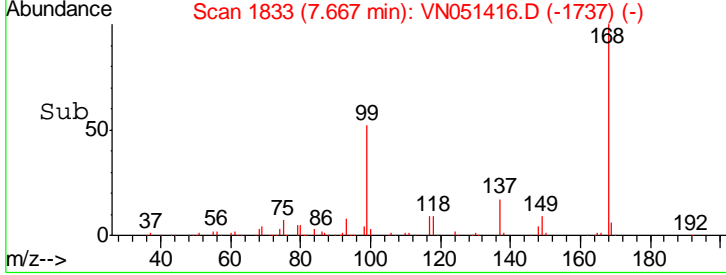
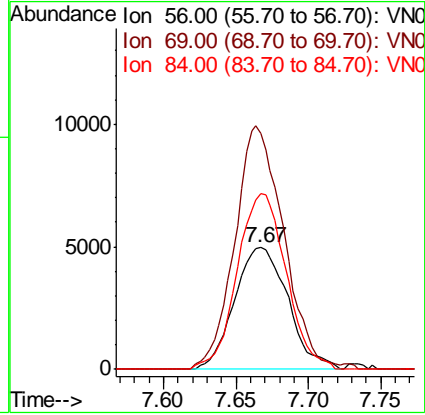
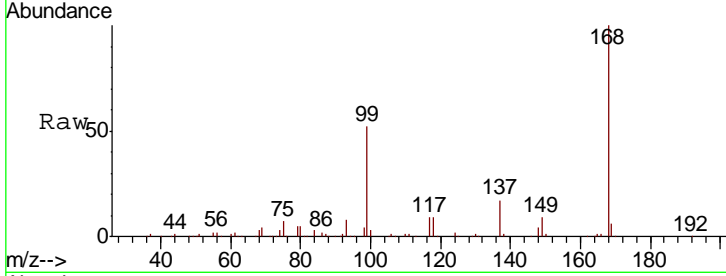




#31
 Cyclohexane
 Concen: 0.985 ug/l
 RT: 7.67 min Scan# 1833
 Delta R.T. 0.01 min
 Lab File: VN051416.D
 Acq: 23 Sep 2018 16:26

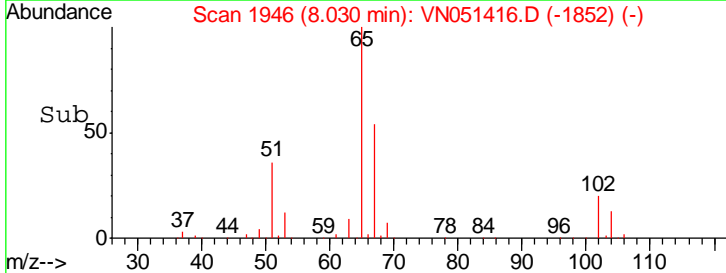
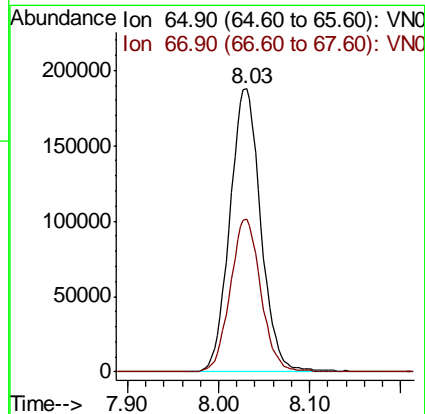
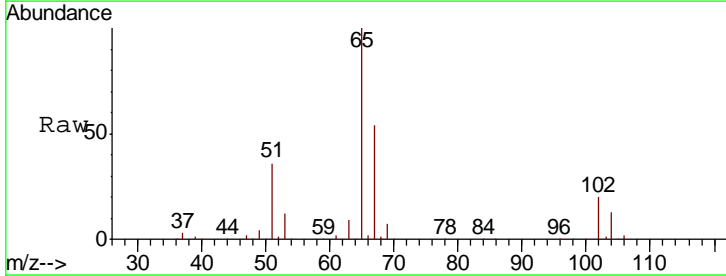
Instrument :
 MSVOA_N
 ClientSampled :
 LS-SOIL-A

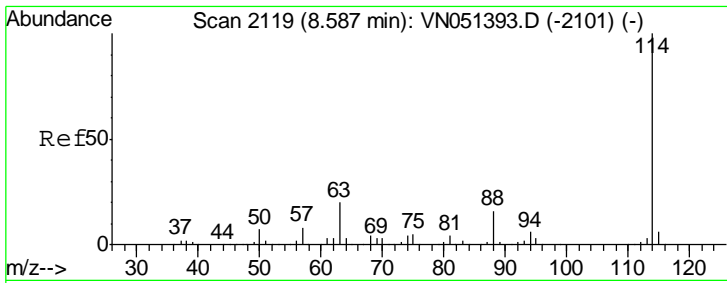
Tgt Ion	Resp	Lower	Upper
56	12742		
69	194.1	25.8	38.6#
84	144.7	66.0	99.0#



#33
 1,2-Dichloroethane-d4
 Concen: 54.011 ug/l
 RT: 8.03 min Scan# 1946
 Delta R.T. 0.00 min
 Lab File: VN051416.D
 Acq: 23 Sep 2018 16:26

Tgt Ion	Resp	Lower	Upper
65	443846		
67	53.5	0.0	107.8



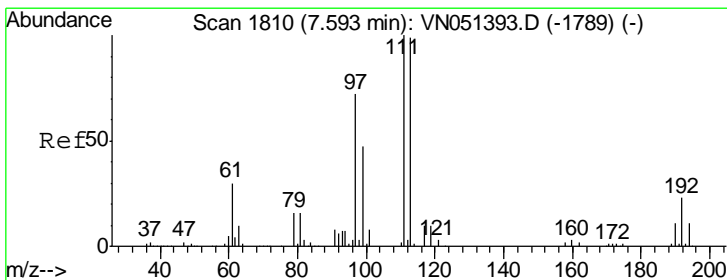
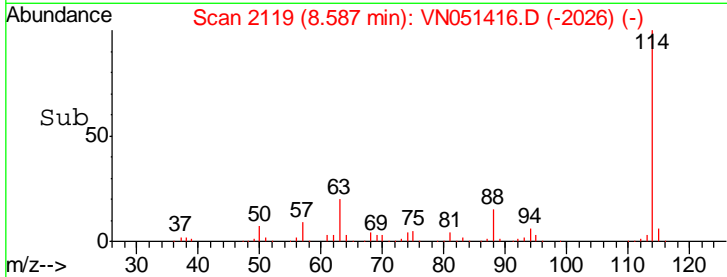
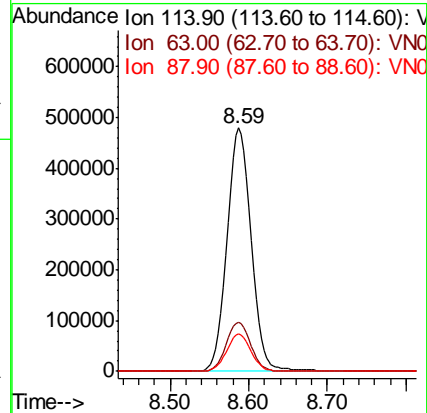
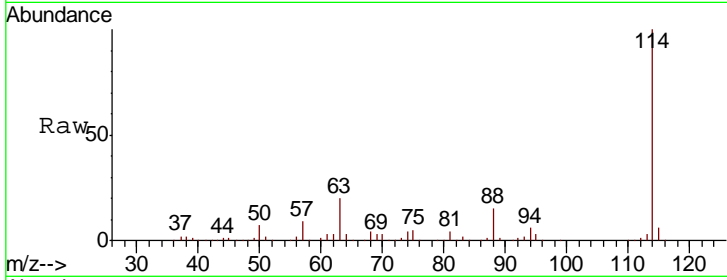


#34
 1,4-Difluorobenzene
 Concen: 50.000 ug/l
 RT: 8.59 min Scan# 2119
 Delta R.T. 0.00 min
 Lab File: VN051416.D
 Acq: 23 Sep 2018 16:26

Instrument :
 MSVOA_N
 ClientSampled :
 LS-SOIL-A

Tgt Ion: 114 Resp: 1015574

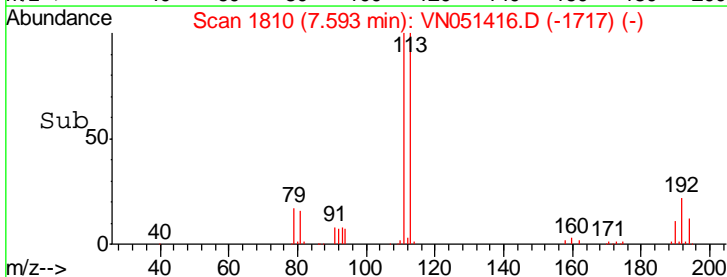
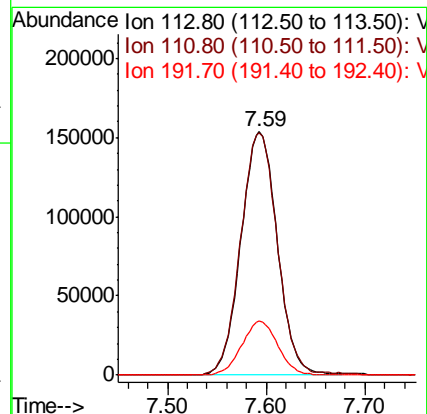
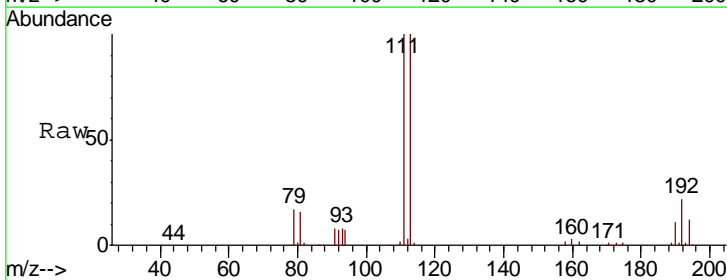
Ion	Ratio	Lower	Upper
114	100		
63	20.2	0.0	40.2
88	15.3	0.0	31.4

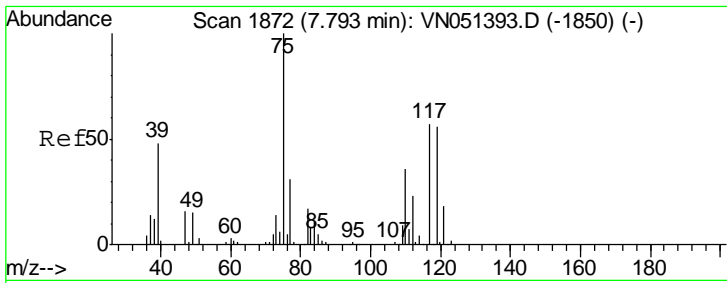


#35
 Dibromofluoromethane
 Concen: 48.291 ug/l
 RT: 7.59 min Scan# 1810
 Delta R.T. 0.00 min
 Lab File: VN051416.D
 Acq: 23 Sep 2018 16:26

Tgt Ion: 113 Resp: 392175

Ion	Ratio	Lower	Upper
113	100		
111	101.1	82.6	123.8
192	22.1	18.0	27.0

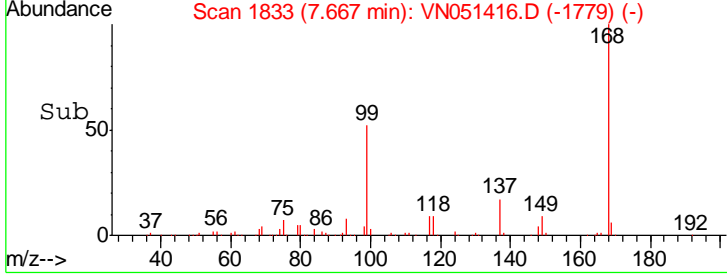
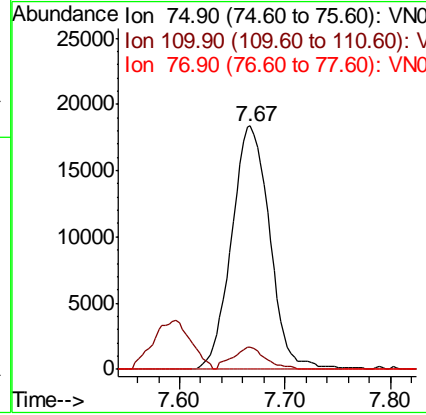
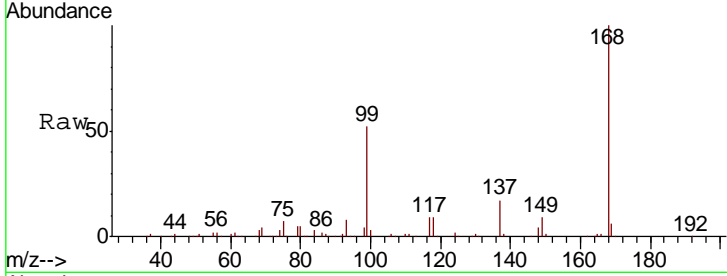




#36
 1,1-Dichloropropene
 Concen: 3.920 ug/l
 RT: 7.67 min Scan# 1833
 Delta R.T. -0.13 min
 Lab File: VN051416.D
 Acq: 23 Sep 2018 16:26

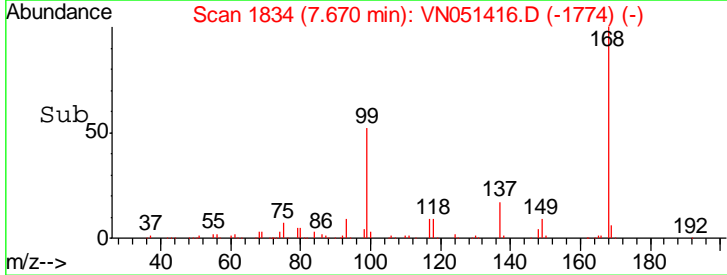
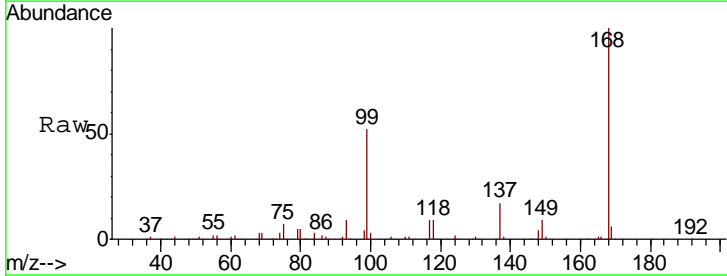
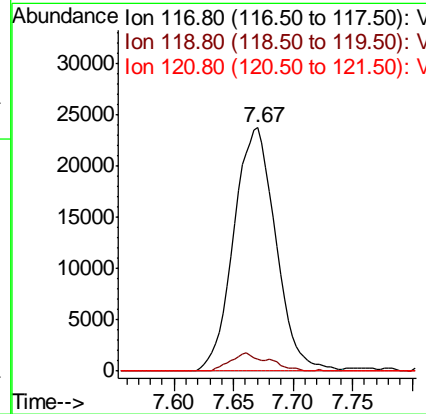
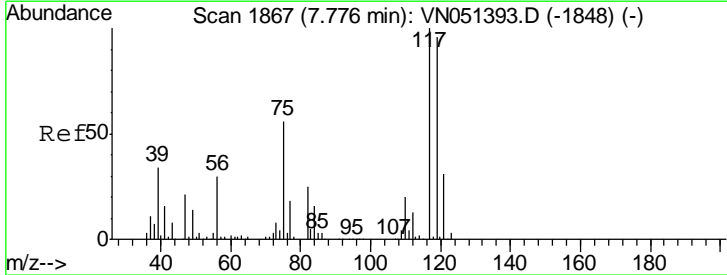
Instrument :
 MSVOA_N
 ClientSampled :
 LS-SOIL-A

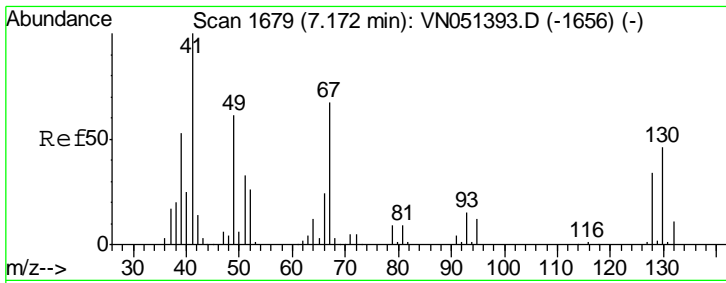
Tgt Ion	Resp	Lower	Upper
75	46097		
110	7.9	18.1	54.3#
77	0.0	25.6	38.4#



#38
 Carbon Tetrachloride
 Concen: 4.727 ug/l
 RT: 7.67 min Scan# 1834
 Delta R.T. -0.11 min
 Lab File: VN051416.D
 Acq: 23 Sep 2018 16:26

Tgt Ion	Resp	Lower	Upper
117	58144		
119	4.7	76.9	115.3#
121	0.0	24.6	37.0#

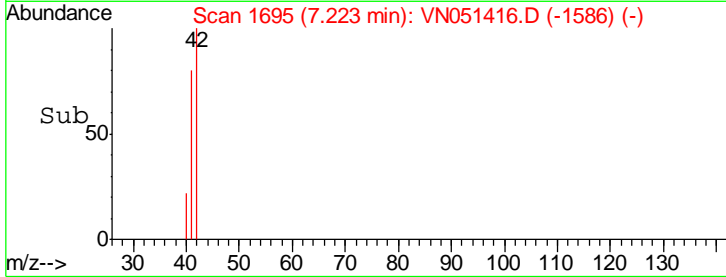
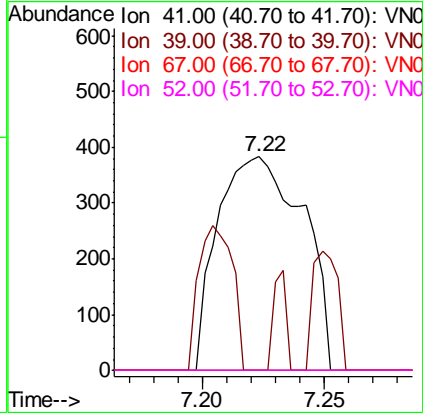
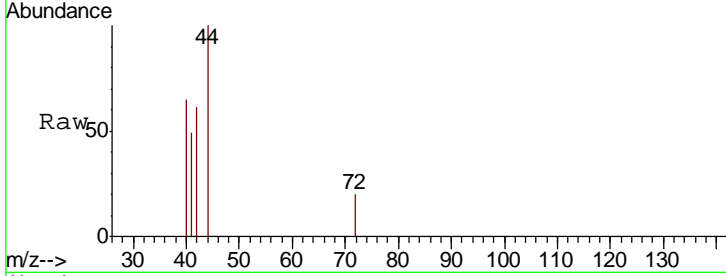




#41
 Methacrylonitrile
 Concen: 0.248 ug/l
 RT: 7.22 min Scan# 1695
 Delta R.T. 0.05 min
 Lab File: VN051416.D
 Acq: 23 Sep 2018 16:26

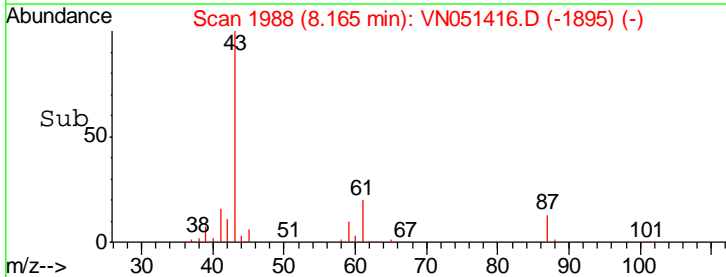
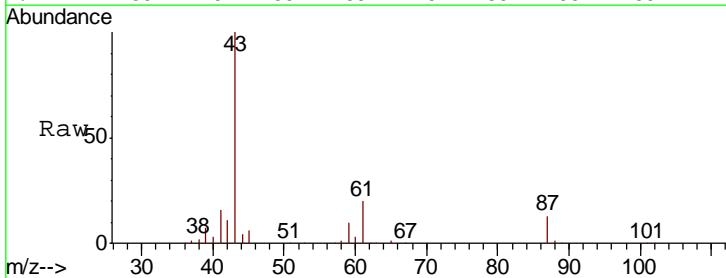
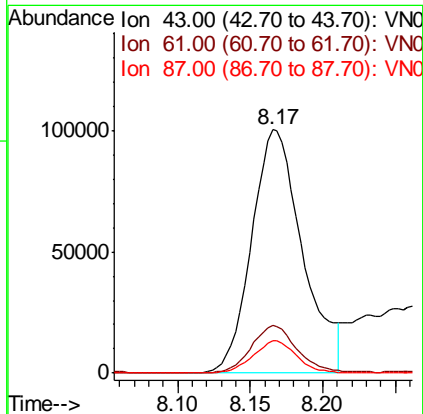
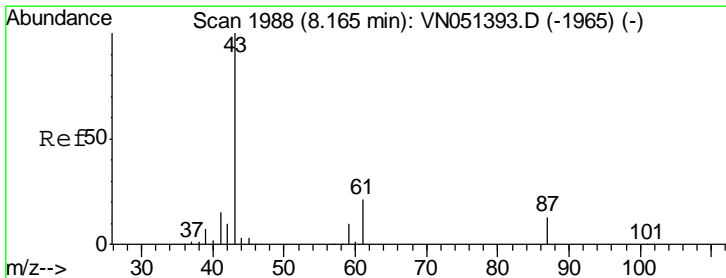
Instrument :
 MSVOA_N
 ClientSampled :
 LS-SOIL-A

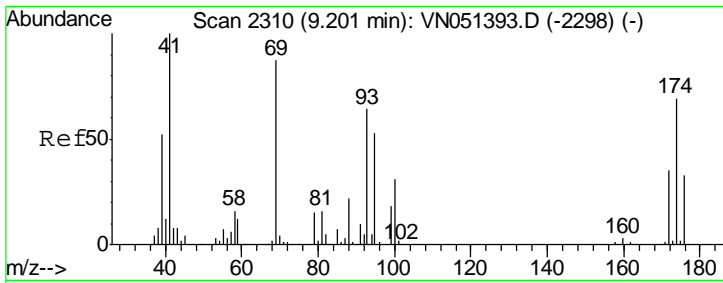
Tgt Ion	Resp	Lower	Upper
41	100		
39	7.0	51.4	77.2#
67	0.0	66.8	100.2#
52	0.0	27.7	41.5#



#43
 Isopropyl Acetate
 Concen: 20.100 ug/l
 RT: 8.17 min Scan# 1988
 Delta R.T. 0.00 min
 Lab File: VN051416.D
 Acq: 23 Sep 2018 16:26

Tgt Ion	Resp	Lower	Upper
43	100		
61	17.8	16.8	25.2
87	11.4	10.7	16.1

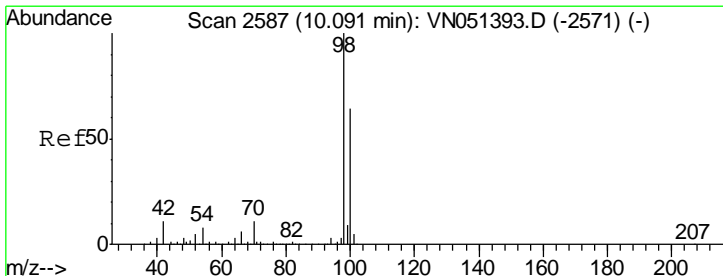
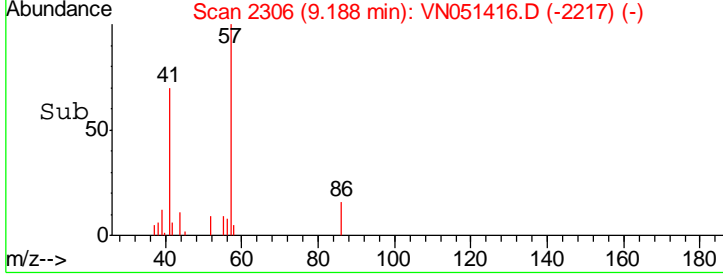
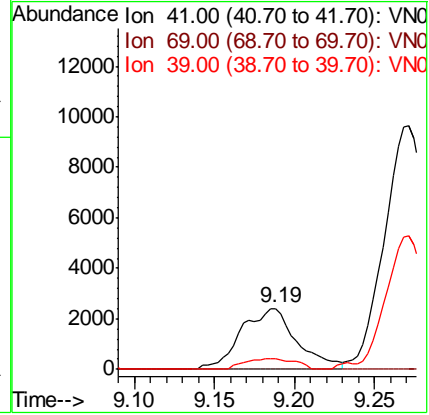
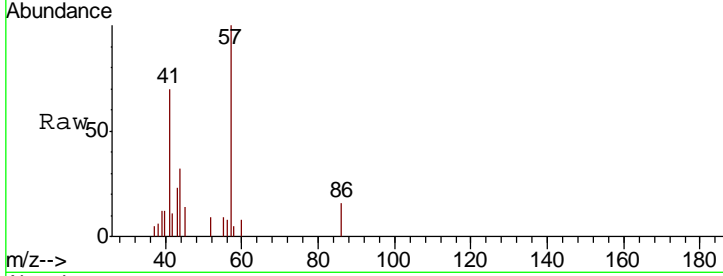




#48
 Methyl methacrylate
 Concen: 0.950 ug/l
 RT: 9.19 min Scan# 2306
 Delta R.T. -0.01 min
 Lab File: VN051416.D
 Acq: 23 Sep 2018 16:26

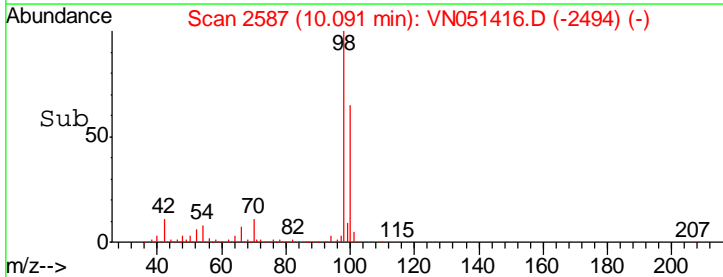
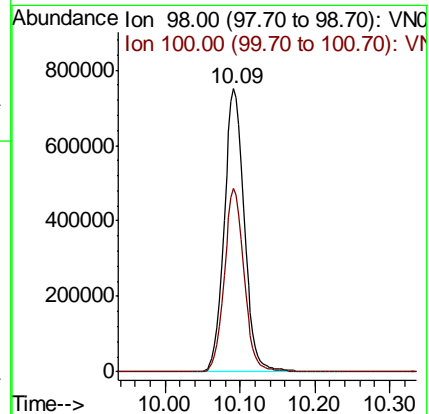
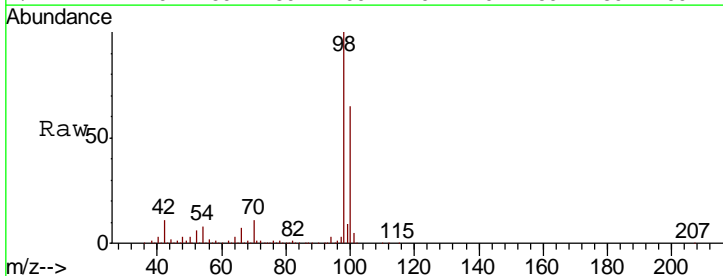
Instrument :
 MSVOA_N
 ClientSampled :
 LS-SOIL-A

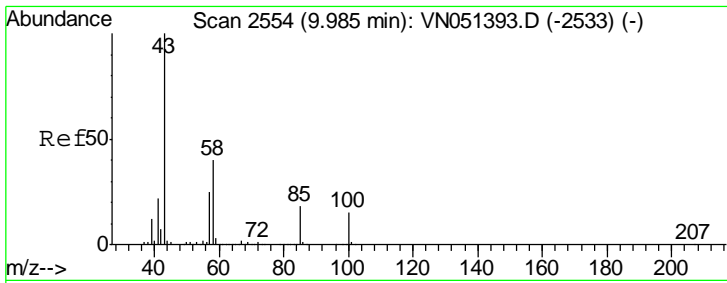
Tgt Ion	Resp	Lower	Upper
41	100		
69	0.0	70.4	105.6#
39	15.7	43.8	65.8#



#50
 Toluene-d8
 Concen: 45.638 ug/l
 RT: 10.09 min Scan# 2587
 Delta R.T. 0.00 min
 Lab File: VN051416.D
 Acq: 23 Sep 2018 16:26

Tgt Ion	Resp	Lower	Upper
98	100		
100	63.9	50.6	75.8

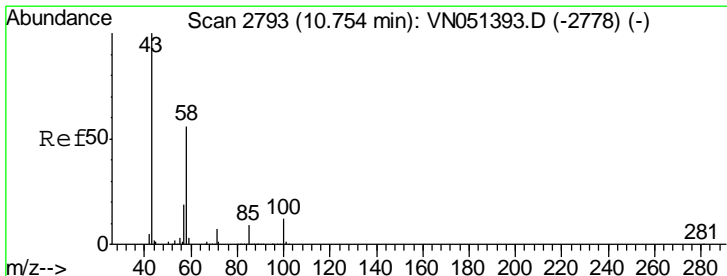
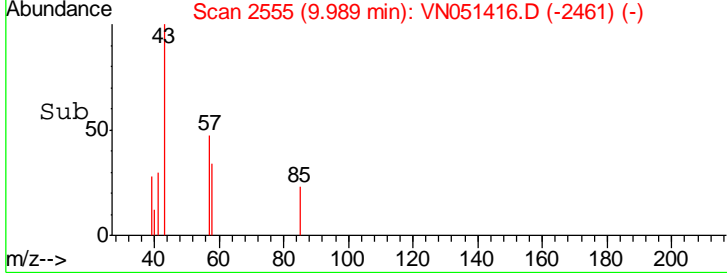
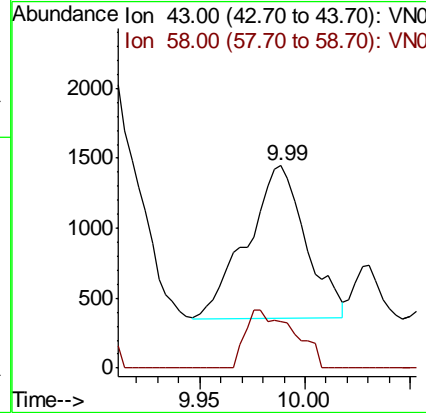
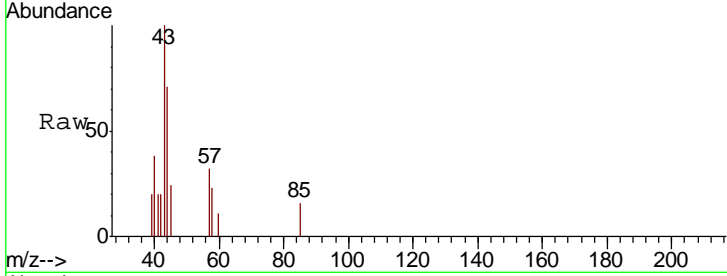




#51
 4-Methyl-2-Pentanone
 Concen: 0.316 ug/l
 RT: 9.99 min Scan# 2555
 Delta R.T. 0.00 min
 Lab File: VN051416.D
 Acq: 23 Sep 2018 16:26

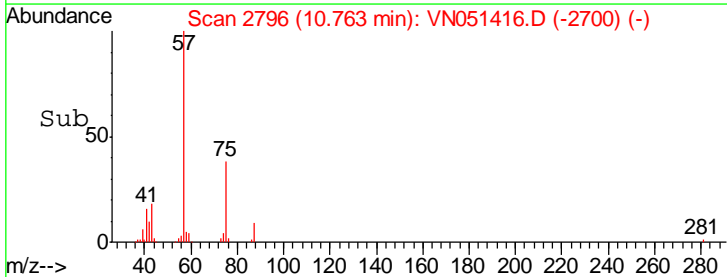
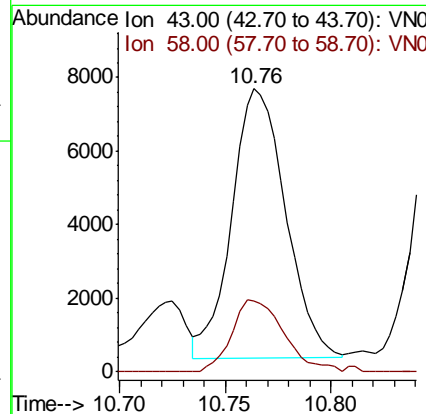
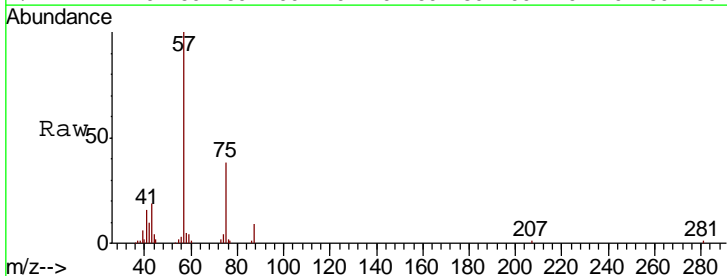
Instrument : MSVOA_N
 ClientSampled : LS-SOIL-A

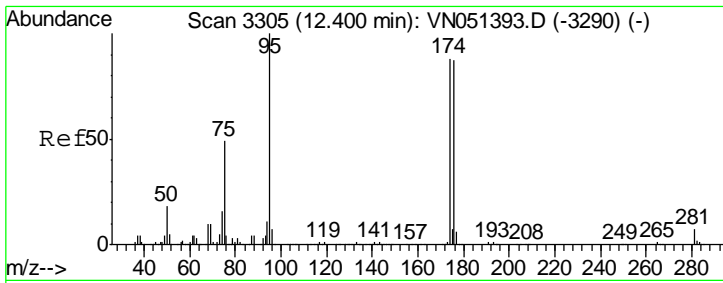
Tgt Ion: 43 Resp: 2122
 Ion Ratio Lower Upper
 43 100
 58 31.2 31.5 47.3#



#59
 2-Hexanone
 Concen: 2.984 ug/l
 RT: 10.76 min Scan# 2796
 Delta R.T. 0.01 min
 Lab File: VN051416.D
 Acq: 23 Sep 2018 16:26

Tgt Ion: 43 Resp: 13008
 Ion Ratio Lower Upper
 43 100
 58 26.0 27.7 83.0#

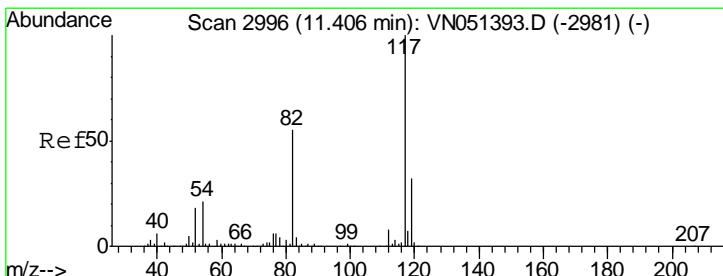
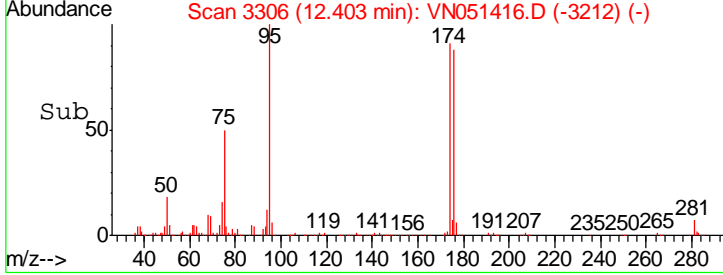
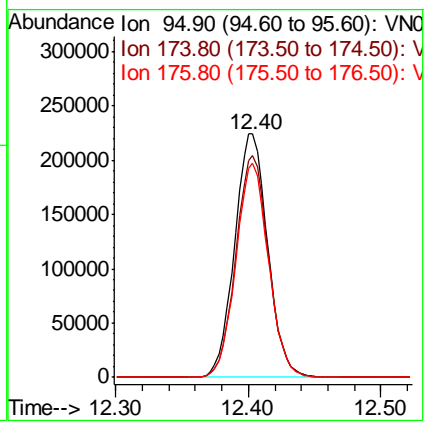
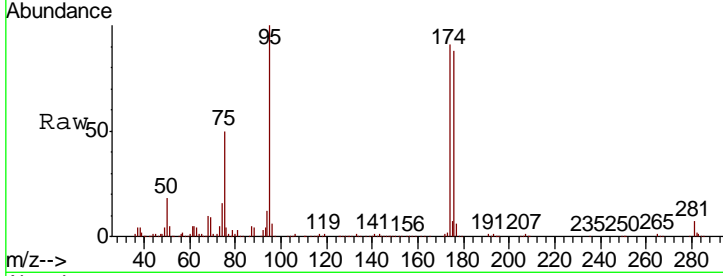




#62
 4-Bromofluorobenzene
 Concen: 39.117 ug/l
 RT: 12.40 min Scan# 3306
 Delta R.T. 0.00 min
 Lab File: VN051416.D
 Acq: 23 Sep 2018 16:26

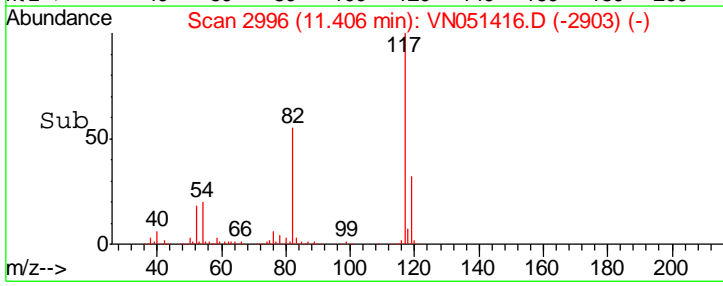
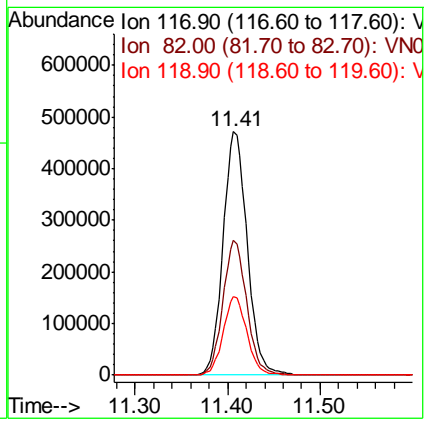
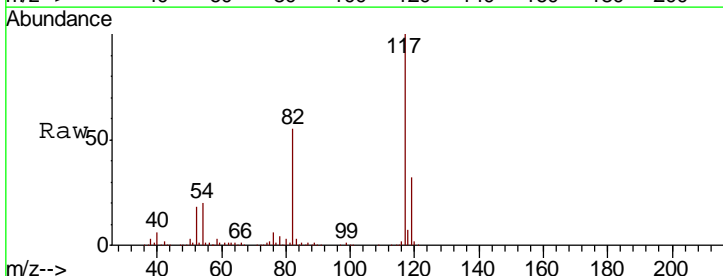
Instrument : MSVOA_N
 ClientSampled : LS-SOIL-A

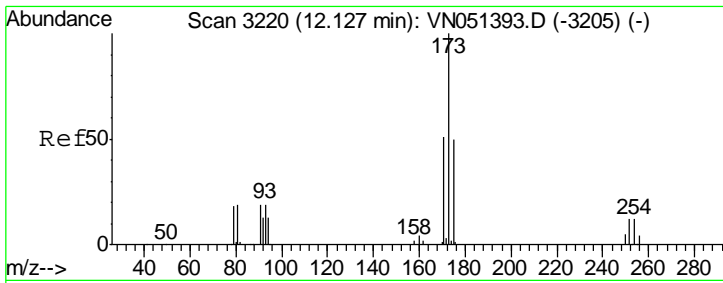
Tgt Ion	Resp	Lower	Upper
95	386986		
174	90.4	0.0	181.6
176	86.7	0.0	176.4



#63
 Chlorobenzene-d5
 Concen: 50.000 ug/l
 RT: 11.41 min Scan# 2996
 Delta R.T. 0.00 min
 Lab File: VN051416.D
 Acq: 23 Sep 2018 16:26

Tgt Ion	Resp	Lower	Upper
117	851590		
82	55.2	44.2	66.2
119	32.1	25.9	38.9

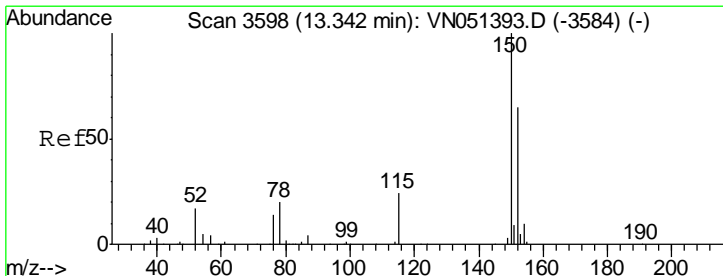
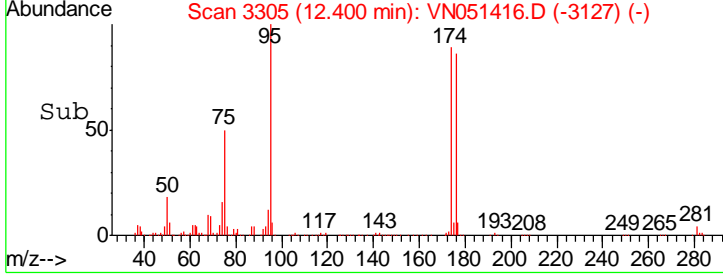
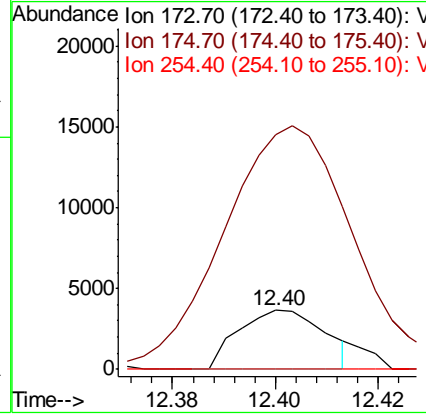
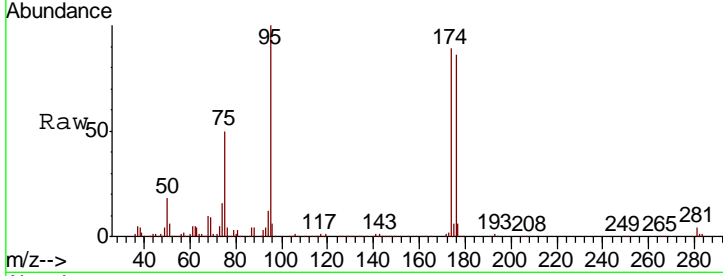




#71
 Bromoform
 Concen: 0.749 ug/l
 RT: 12.40 min Scan# 3305
 Delta R.T. 0.27 min
 Lab File: VN051416.D
 Acq: 23 Sep 2018 16:26

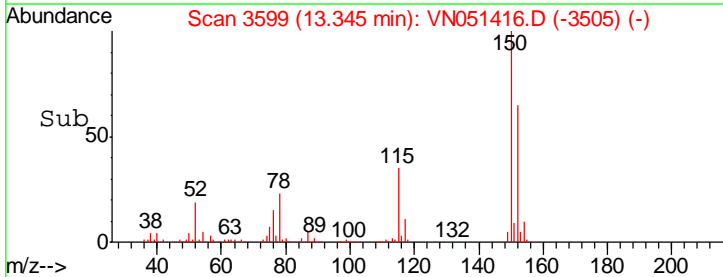
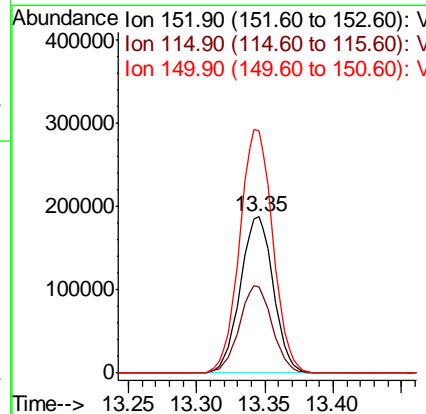
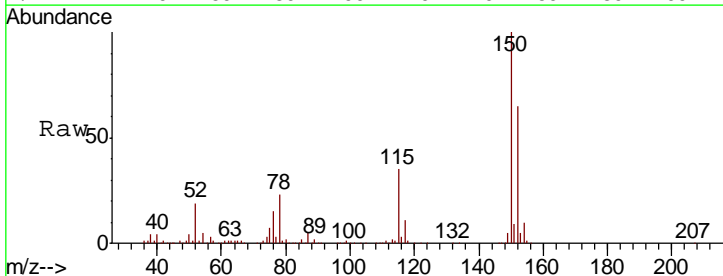
Instrument : MSVOA_N
 ClientSampled : LS-SOIL-A

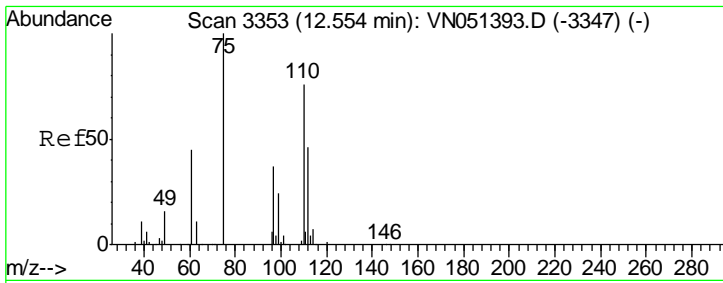
Tgt Ion	Resp	Lower	Upper
173	100		
175	529.5	24.8	74.3#
254	0.0	0.2	0.2#



#72
 1,4-Dichlorobenzene-d4
 Concen: 50.000 ug/l
 RT: 13.35 min Scan# 3599
 Delta R.T. 0.00 min
 Lab File: VN051416.D
 Acq: 23 Sep 2018 16:26

Tgt Ion	Resp	Lower	Upper
152	100		
115	55.3	28.3	84.9
150	156.0	0.0	353.6

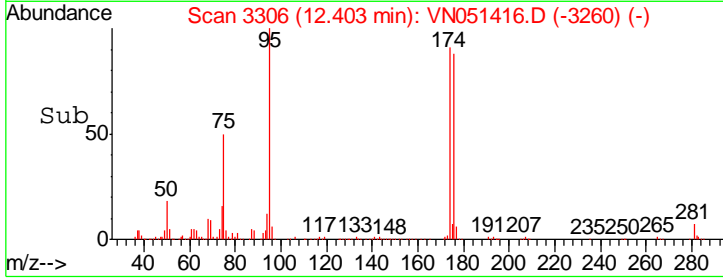
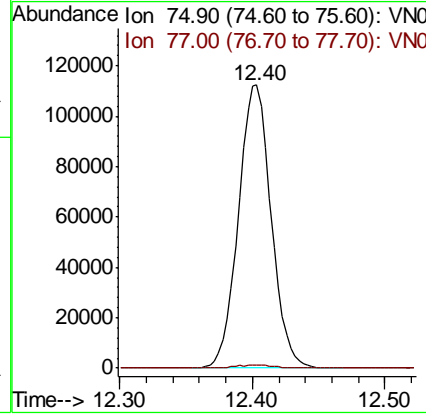
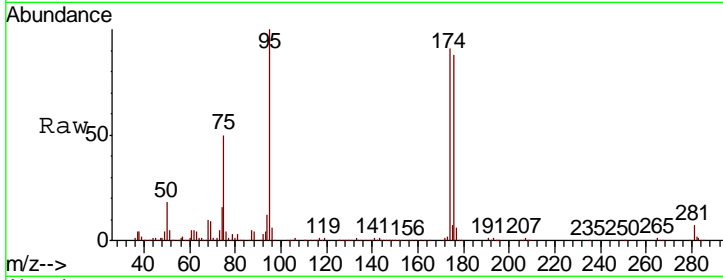




#76
 1,2,3-Trichloropropane
 Concen: 36.659 ug/l
 RT: 12.40 min Scan# 3306
 Delta R.T. -0.15 min
 Lab File: VN051416.D
 Acq: 23 Sep 2018 16:26

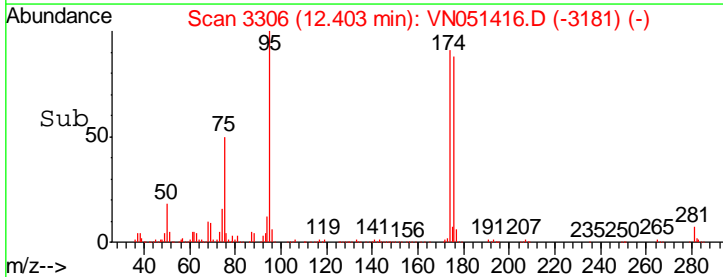
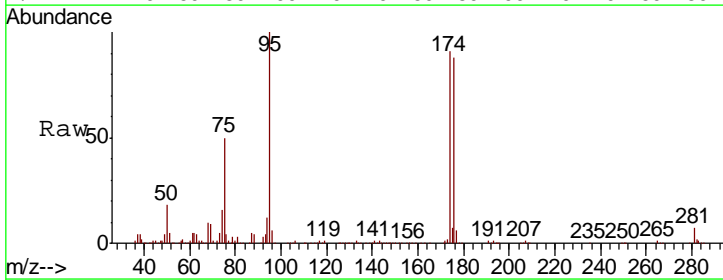
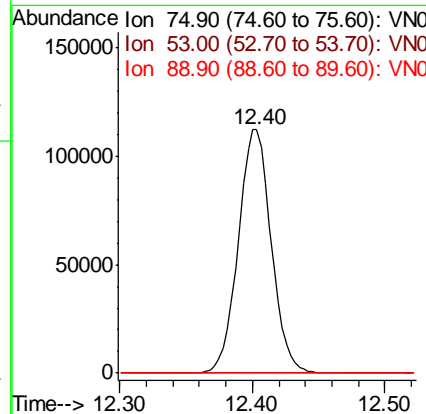
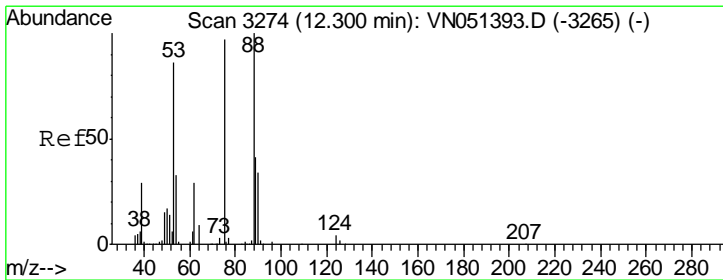
Instrument :
 MSVOA_N
 ClientSampled :
 LS-SOIL-A

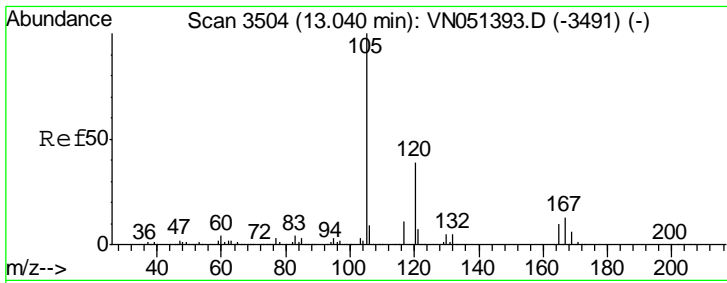
Tgt Ion	Resp	Lower	Upper
75	100		
77	1.3	0.0	0.0#



#81
 trans-1,4-Dichloro-2-butene
 Concen: 112.725 ug/l
 RT: 12.40 min Scan# 3306
 Delta R.T. 0.10 min
 Lab File: VN051416.D
 Acq: 23 Sep 2018 16:26

Tgt Ion	Resp	Lower	Upper
75	100		
53	0.1	73.9	110.9#
89	0.1	36.7	55.1#

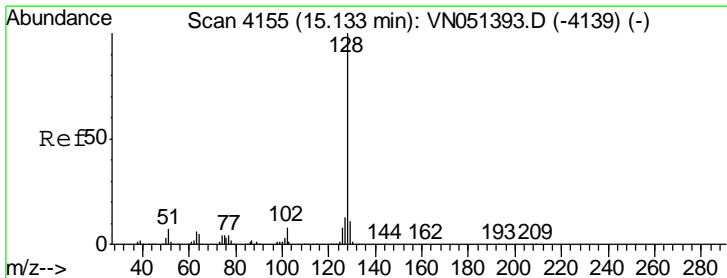
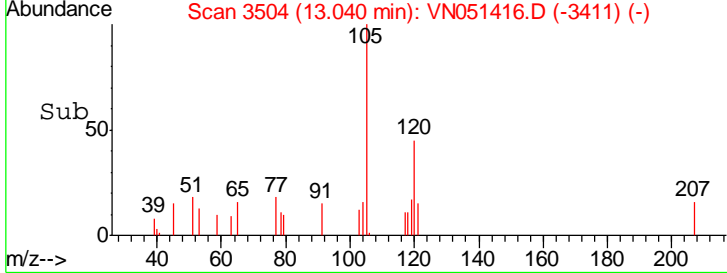
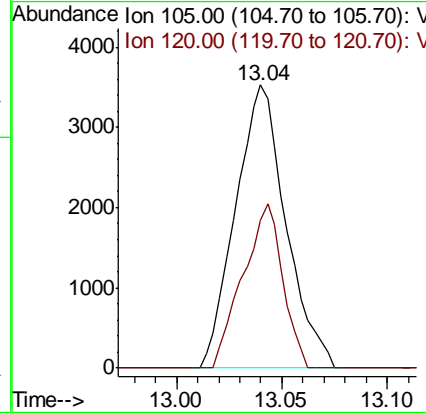
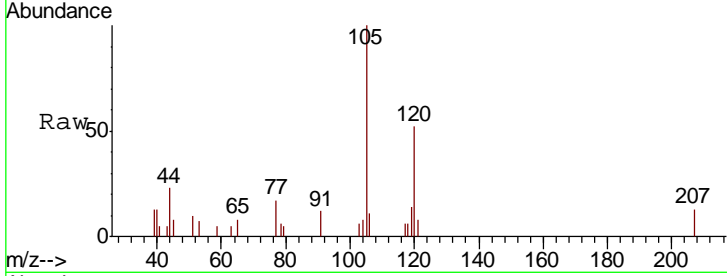




#84
 1,2,4-Trimethylbenzene
 Concen: 0.266 ug/l
 RT: 13.04 min Scan# 3504
 Delta R.T. 0.00 min
 Lab File: VN051416.D
 Acq: 23 Sep 2018 16:26

Instrument : MSVOA_N
 ClientSampled : LS-SOIL-A

Tgt Ion:105 Resp: 5850
 Ion Ratio Lower Upper
 105 100
 120 45.8 22.9 68.7



#95
 Naphthalene
 Concen: 9.003 ug/l
 RT: 15.13 min Scan# 4155
 Delta R.T. 0.00 min
 Lab File: VN051416.D
 Acq: 23 Sep 2018 16:26

Tgt Ion:128 Resp: 13455
 Ion Ratio Lower Upper
 128 100
 127 14.6 10.5 15.7
 129 14.2 8.6 12.8#

