

Data Path : Z:\VOASRV\HPCHEM1\MSVOA N\DATA\VN092319\
 Data File : VN058302.D
 Acq On : 23 Sep 2019 18:50
 Operator : JC/SP
 Sample : K4975-07
 Misc : 5.00mL/MSVOA N/WATER
 ALS Vial : 29 Sample Multiplier: 1

Instrument :
 MSVOA_N
 ClientSampleId :
 DUP05-20190917

Quant Time: Sep 24 01:35:40 2019
 Quant Method : Z:\VOASRV\HPCHEM1\MSVOA_N\METHODS\82N091819W.M
 Quant Title : SW846 8260
 QLast Update : Thu Sep 19 09:27:53 2019
 Response via : Initial Calibration

Internal Standards	R.T.	QIon	Response	Conc	Units	Dev(Min)
1) Pentafluorobenzene	7.65	168	479537	50.00	ug/l	0.00
34) 1,4-Difluorobenzene	8.58	114	784735	50.00	ug/l	0.00
63) Chlorobenzene-d5	11.41	117	668884	50.00	ug/l	0.00
72) 1,4-Dichlorobenzene-d4	13.35	152	252890	50.00	ug/l	0.00

System Monitoring Compounds

33) 1,2-Dichloroethane-d4	8.01	65	360839	54.03	ug/l	0.00
Spiked Amount	50.000		Recovery	=	108.06%	
35) Dibromofluoromethane	7.58	113	249714	52.35	ug/l	0.00
Spiked Amount	50.000		Recovery	=	104.70%	
50) Toluene-d8	10.09	98	995290	53.55	ug/l	0.00
Spiked Amount	50.000		Recovery	=	107.10%	
62) 4-Bromofluorobenzene	12.41	95	310552	44.98	ug/l	0.00
Spiked Amount	50.000		Recovery	=	89.96%	

Target Compounds

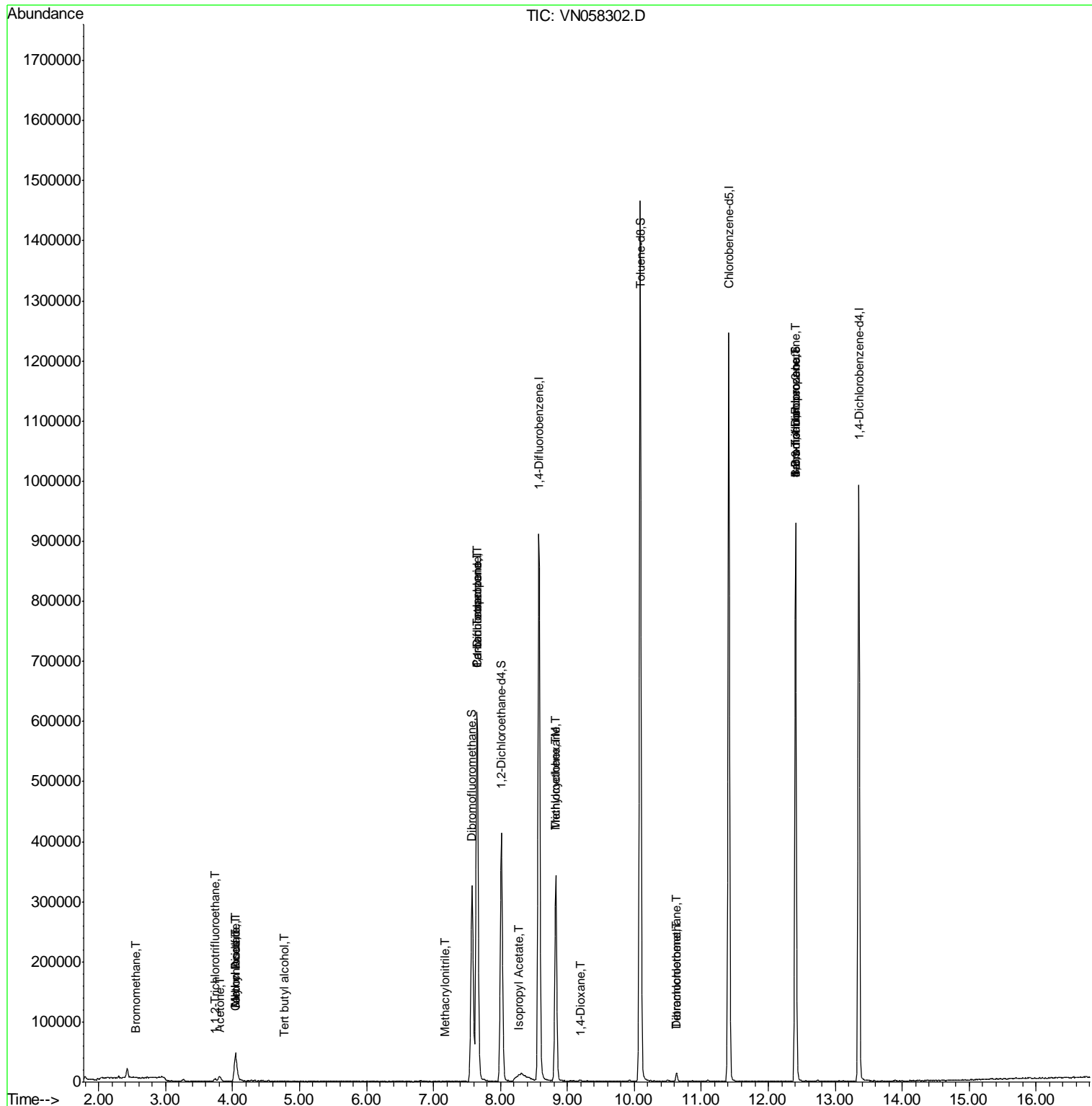
					Qvalue
3) Chloromethane	2.04	50	1587	Below Cal	90
4) Vinyl Chloride	2.17	62	30	Below Cal #	43
5) Bromomethane	2.55	94	167	0.816 ug/l #	4
6) Chloroethane	2.69	64	67	Below Cal #	44
9) 1,1,2-Trichlorotrifluoroet	3.74	101	2410	0.622 ug/l #	84
11) Tert butyl alcohol	4.76	59	177	0.223 ug/l #	71
12) 1,1-Dichloroethene	3.71	96	153	Below Cal #	18
14) Allyl chloride	4.04	41	7843	1.236 ug/l #	79
16) Acetone	3.81	43	14605	6.442 ug/l	93
17) Carbon Disulfide	4.03	76	68	0.287 ug/l #	74
18) Methyl Acetate	4.04	43	20795	3.486 ug/l #	53
20) Methylene Chloride	4.53	84	397	Below Cal #	32
31) Cyclohexane	7.65	56	12099	Below Cal #	1
36) 1,1-Dichloropropene	7.65	75	43544	7.695 ug/l #	46
38) Carbon Tetrachloride	7.65	117	50124	8.811 ug/l #	14
39) Methylcyclohexane	8.82	83	1637	0.370 ug/l #	1
41) Methacrylonitrile	7.17	41	75	0.936 ug/l #	100
43) Isopropyl Acetate	8.27	43	12779	1.165 ug/l #	57
44) Trichloroethene	8.82	130	119240	28.190 ug/l	98
49) 1,4-Dioxane	9.20	88	262	3.204 ug/l #	32
60) Dibromochloromethane	10.63	129	2725	0.589 ug/l #	11
64) Tetrachloroethene	10.63	164	3072	0.942 ug/l #	90
71) Bromoform	12.41	173	311	3.686 ug/l #	1
76) 1,2,3-Trichloropropane	12.41	75	168813	37.299 ug/l #	100
81) trans-1,4-Dichloro-2-buten	12.41	75	168813	103.959 ug/l #	5

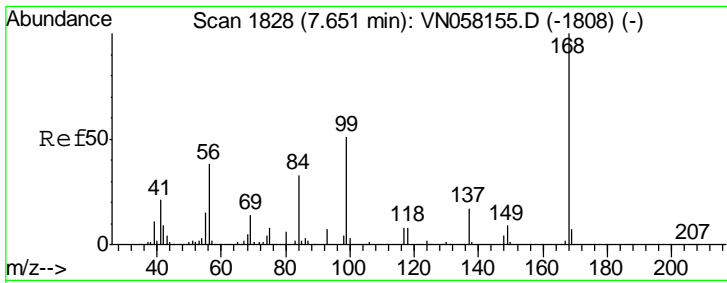
(#) = qualifier out of range (m) = manual integration (+) = signals summed

Data Path : Z:\VOASRV\HPCHEM1\MSVOA N\DATA\VN092319\
 Data File : VN058302.D
 Acq On : 23 Sep 2019 18:50
 Operator : JC/SP
 Sample : K4975-07
 Misc : 5.00mL/MSVOA N/WATER
 ALS Vial : 29 Sample Multiplier: 1

Instrument :
 MSVOA_N
 Client Sample ID :
 DUP05-20190917

Quant Time: Sep 24 01:35:40 2019
 Quant Method : Z:\VOASRV\HPCHEM1\MSVOA_N\METHODS\82N091819W.M
 Quant Title : SW846 8260
 QLast Update : Thu Sep 19 09:27:53 2019
 Response via : Initial Calibration

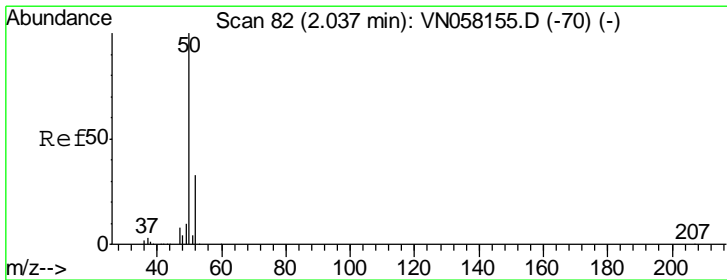
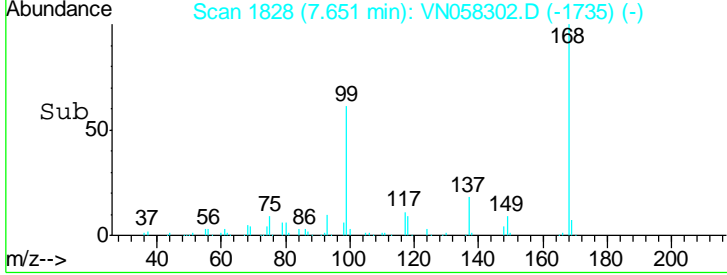
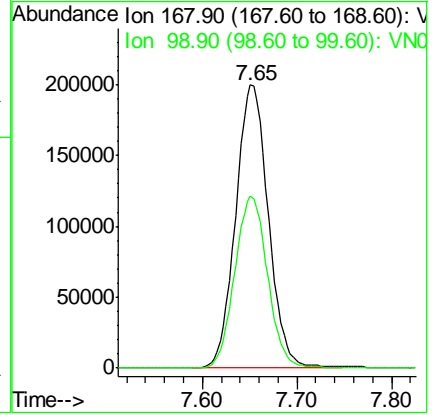
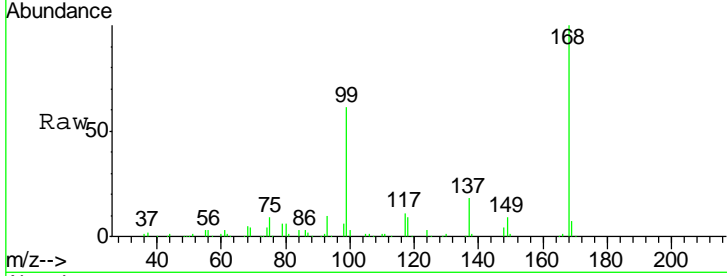




#1
 Pentafluorobenzene
 Concen: 50.000 ug/l
 RT: 7.65 min Scan# 1828
 Delta R.T. 0.00 min
 Lab File: VN058302.D
 Acq: 23 Sep 2019 18:50

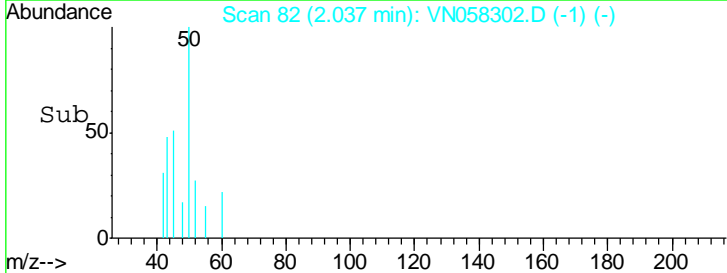
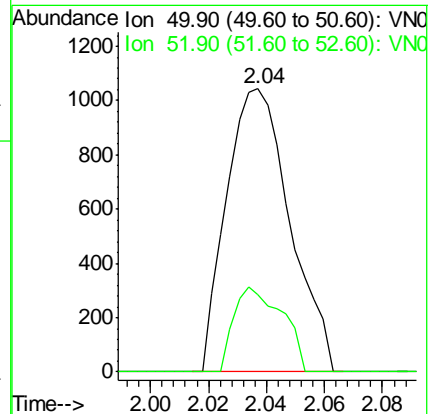
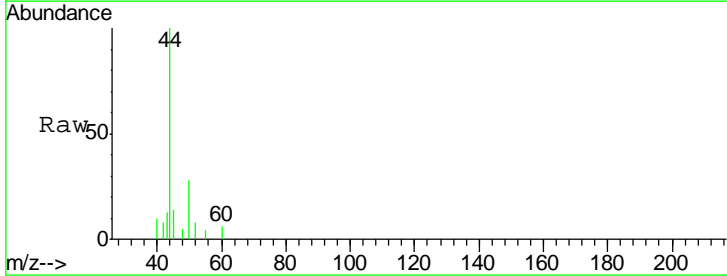
Instrument :
 MSVOA_N
 ClientSampled :
 DUP05-20190917

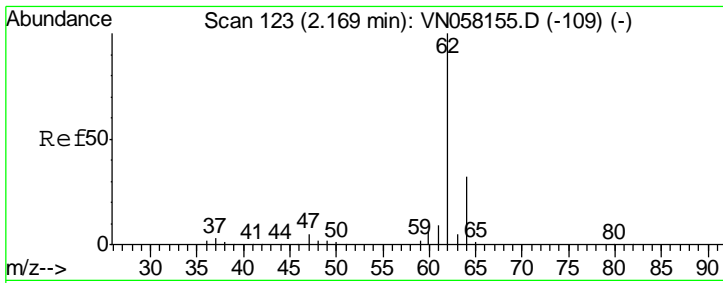
Tgt Ion: 168 Resp: 479537
 Ion Ratio Lower Upper
 168 100
 99 60.5 47.4 71.2



#3
 Chloromethane
 Concen: Below Cal
 RT: 2.04 min Scan# 82
 Delta R.T. 0.00 min
 Lab File: VN058302.D
 Acq: 23 Sep 2019 18:50

Tgt Ion: 50 Resp: 1587
 Ion Ratio Lower Upper
 50 100
 52 27.3 26.3 39.5

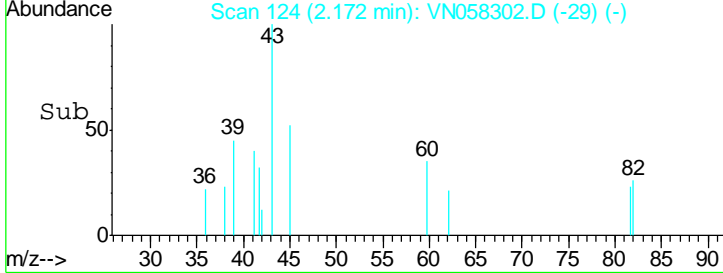
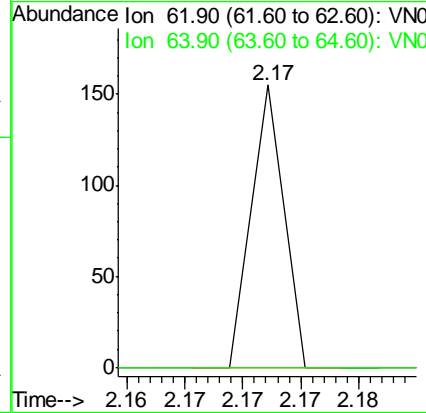
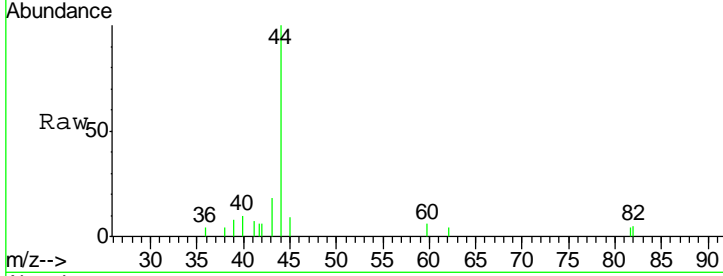




#4
 Vinyl Chloride
 Concen: Below Cal
 RT: 2.17 min Scan# 124
 Delta R.T. 0.00 min
 Lab File: VN058302.D
 Acq: 23 Sep 2019 18:50

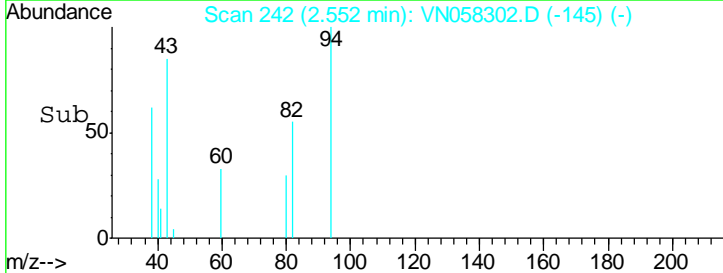
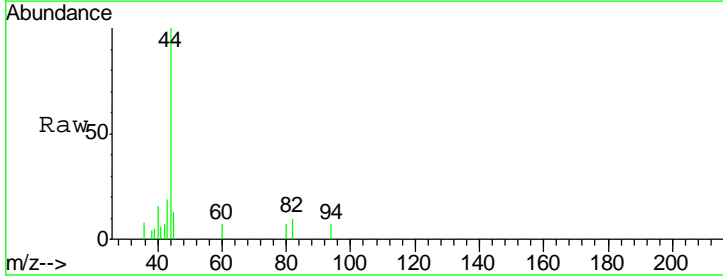
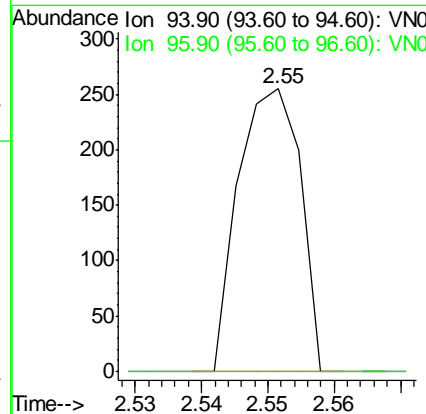
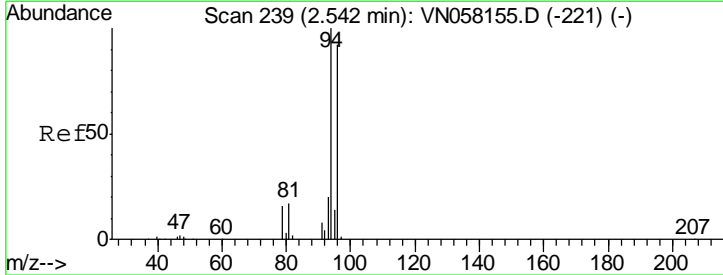
Instrument :
 MSVOA_N
 ClientSampled :
 DUP05-20190917

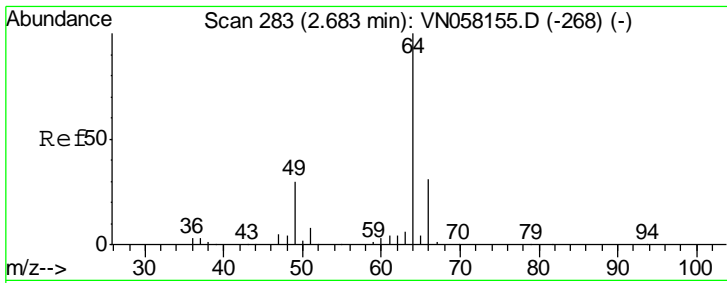
Tgt Ion: 62 Resp: 30
 Ion Ratio Lower Upper
 62 100
 64 0.0 25.4 38.2#



#5
 Bromomethane
 Concen: 0.816 ug/l
 RT: 2.55 min Scan# 242
 Delta R.T. 0.01 min
 Lab File: VN058302.D
 Acq: 23 Sep 2019 18:50

Tgt Ion: 94 Resp: 167
 Ion Ratio Lower Upper
 94 100
 96 0.0 73.3 109.9#

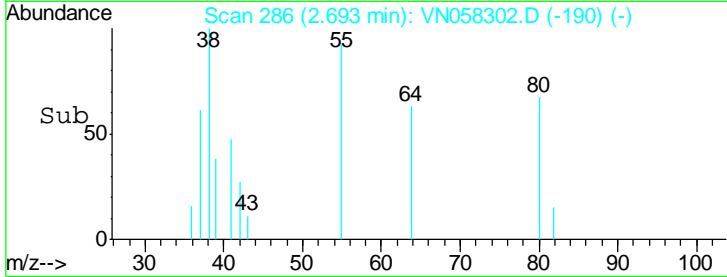
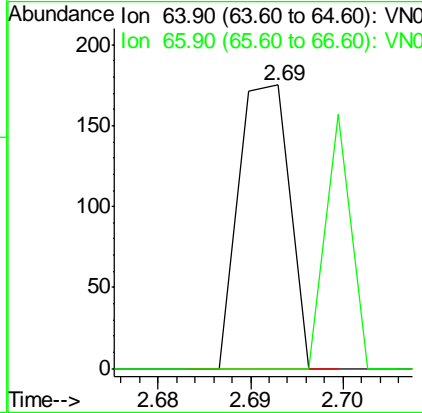
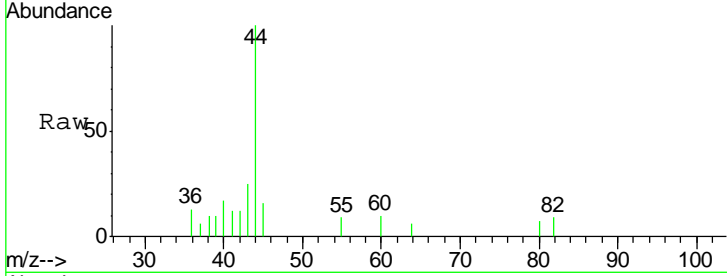




#6
 Chloroethane
 Concen: Below Cal
 RT: 2.69 min Scan# 286
 Delta R.T. 0.01 min
 Lab File: VN058302.D
 Acq: 23 Sep 2019 18:50

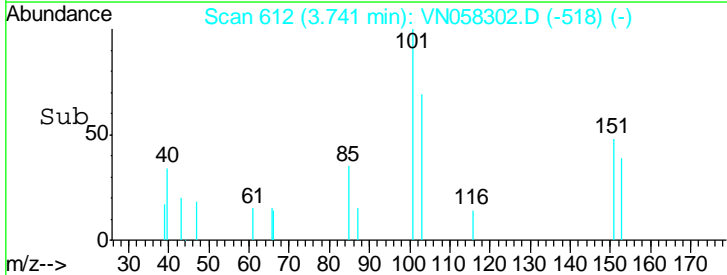
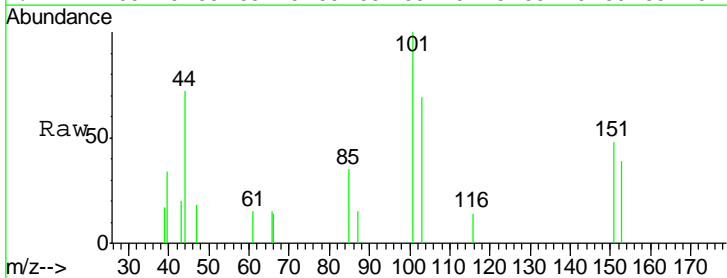
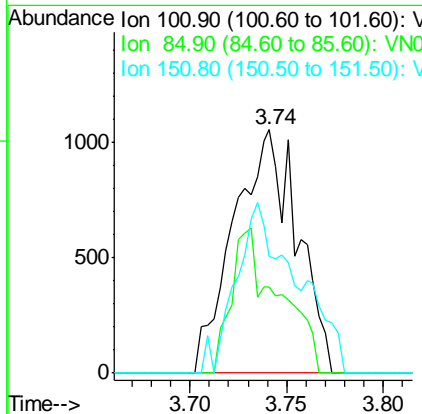
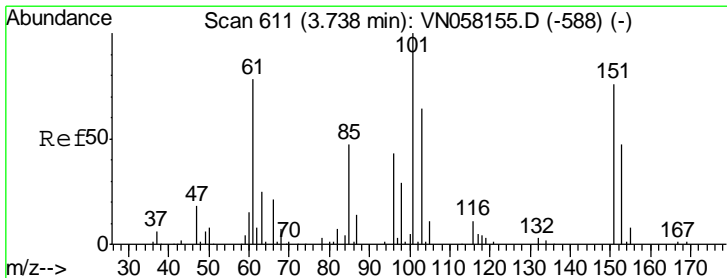
Instrument :
 MSVOA_N
 ClientSampled :
 DUP05-20190917

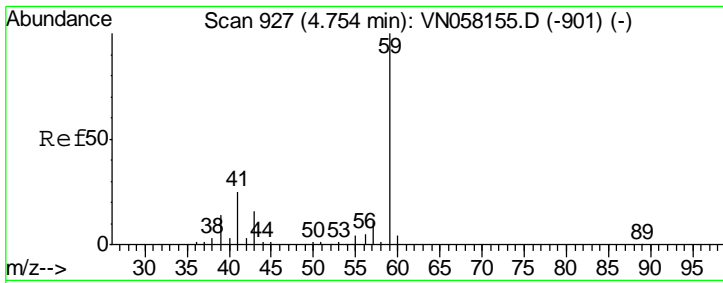
Tgt Ion	Resp	Lower	Upper
64	100		
66	0.0	24.6	37.0#



#9
 1,1,2-Trichlorotrifluoroethane
 Concen: 0.622 ug/l
 RT: 3.74 min Scan# 612
 Delta R.T. 0.00 min
 Lab File: VN058302.D
 Acq: 23 Sep 2019 18:50

Tgt Ion	Resp	Lower	Upper
101	100		
85	44.7	37.3	55.9
151	53.4	59.6	89.4#

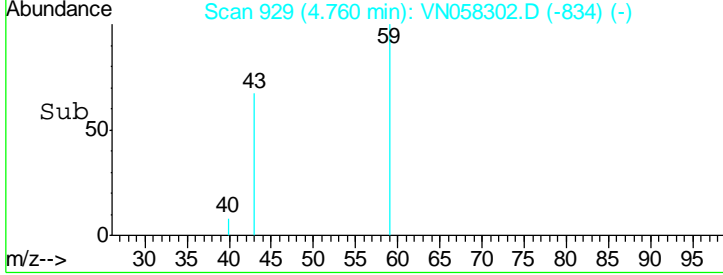
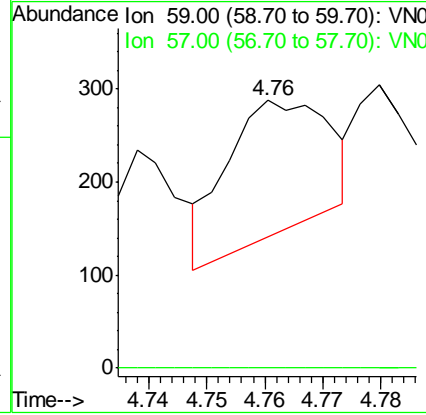
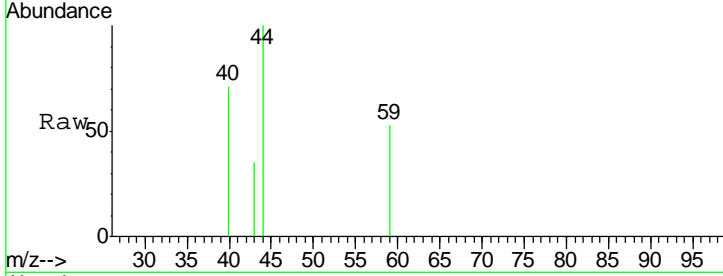




#11
 Tert butyl alcohol
 Concen: 0.223 ug/l
 RT: 4.76 min Scan# 929
 Delta R.T. 0.01 min
 Lab File: VN058302.D
 Acq: 23 Sep 2019 18:50

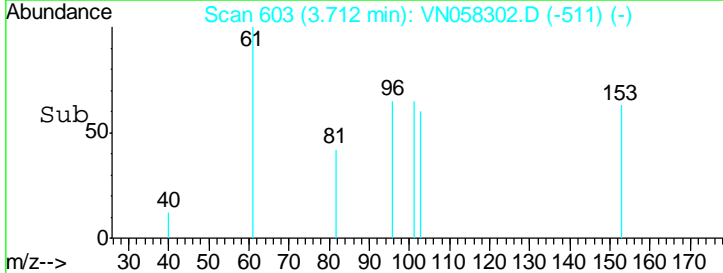
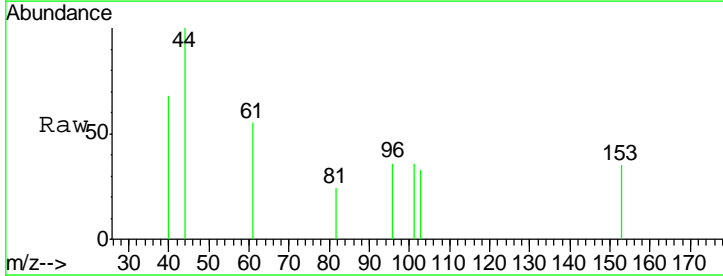
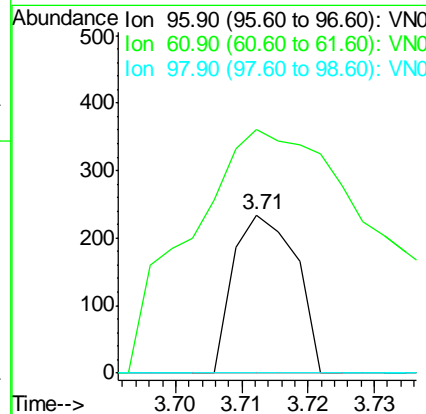
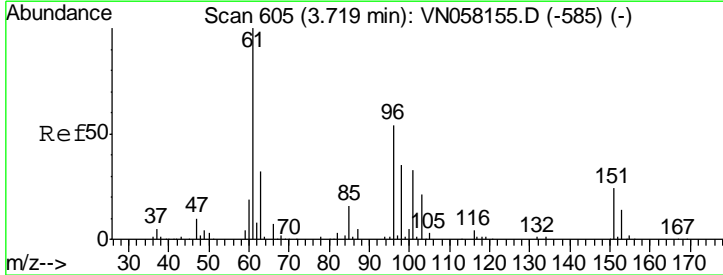
Instrument :
 MSVOA_N
ClientSampled :
 DUP05-20190917

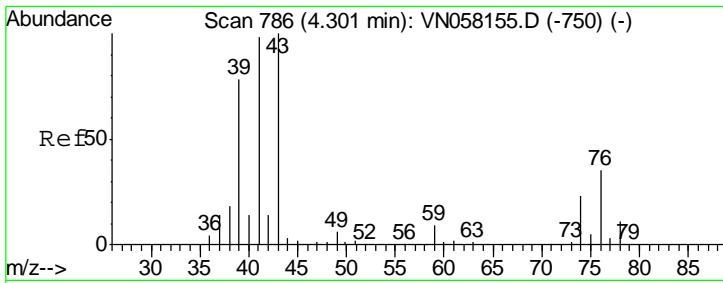
Tgt Ion	Resp	Lower	Upper
59	100		
57	0.0	8.6	13.0#



#12
 1,1-Dichloroethene
 Concen: Below Cal
 RT: 3.71 min Scan# 603
 Delta R.T. -0.01 min
 Lab File: VN058302.D
 Acq: 23 Sep 2019 18:50

Tgt Ion	Resp	Lower	Upper
96	100		
61	68.8	149.5	224.3#
98	0.0	52.4	78.6#

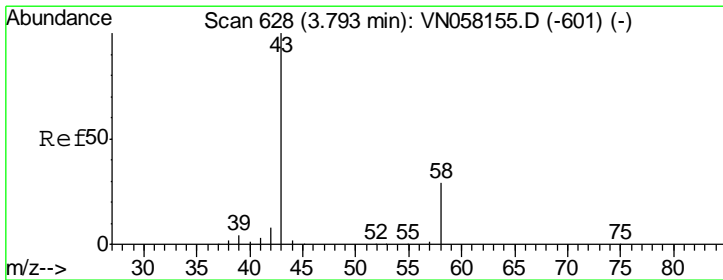
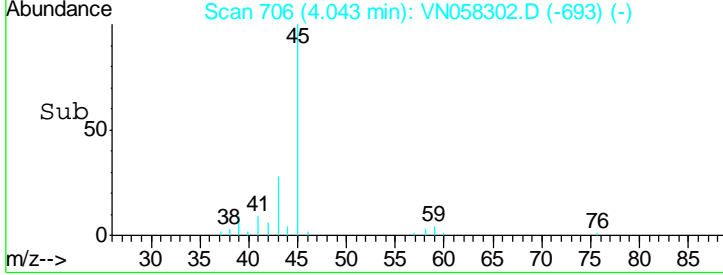
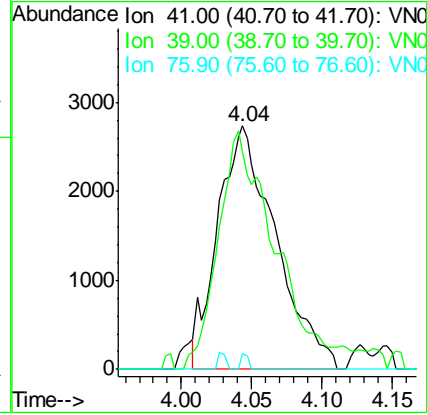
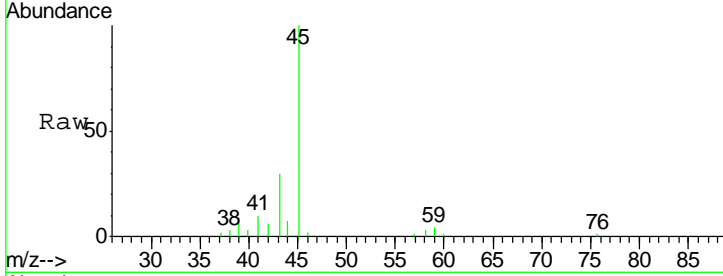




#14
 Allvl chloride
 Concen: 1.236 ug/l
 RT: 4.04 min Scan# 706
 Delta R.T. -0.26 min
 Lab File: VN058302.D
 Acq: 23 Sep 2019 18:50

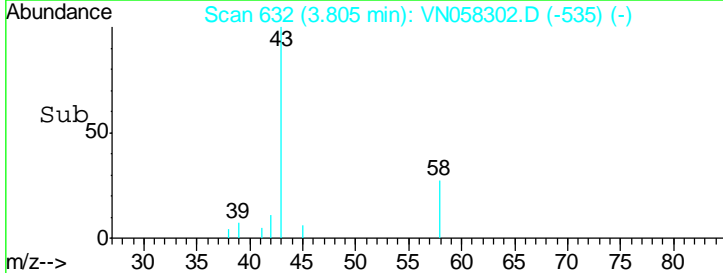
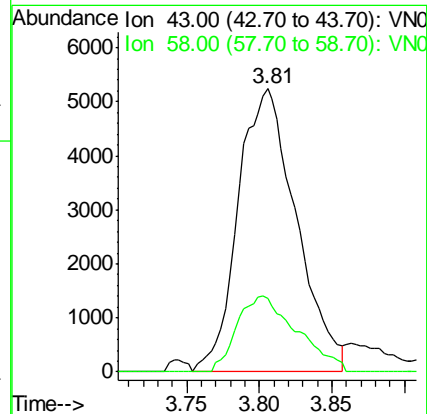
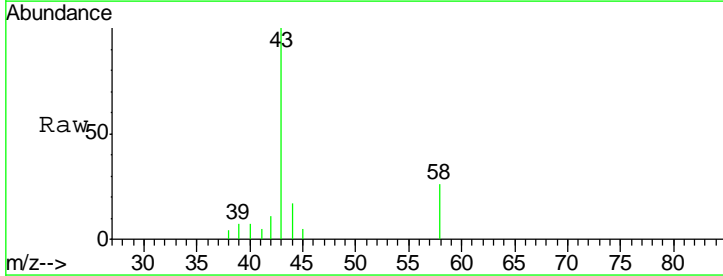
Instrument :
 MSVOA_N
 ClientSampled :
 DUP05-20190917

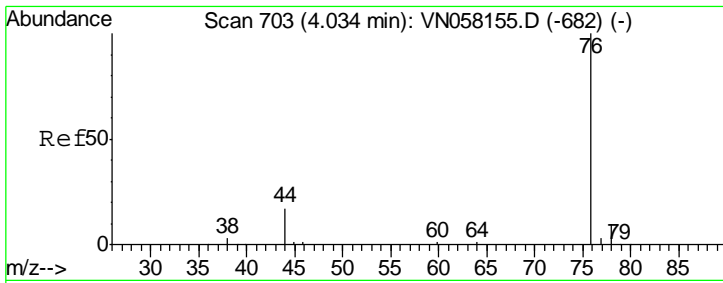
Tgt Ion	Resp	Lower	Upper
41	100		
39	79.3	59.1	88.7
76	0.8	25.1	37.7#



#16
 Acetone
 Concen: 6.442 ug/l
 RT: 3.81 min Scan# 632
 Delta R.T. 0.01 min
 Lab File: VN058302.D
 Acq: 23 Sep 2019 18:50

Tgt Ion	Resp	Lower	Upper
43	100		
58	25.8	23.4	35.2

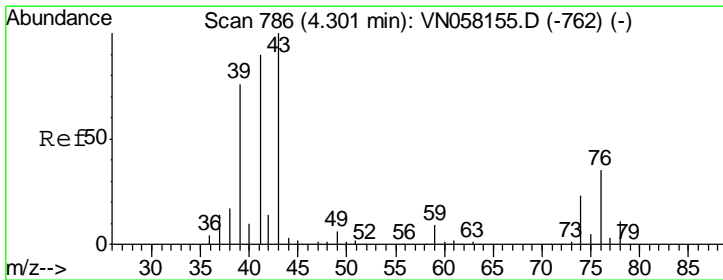
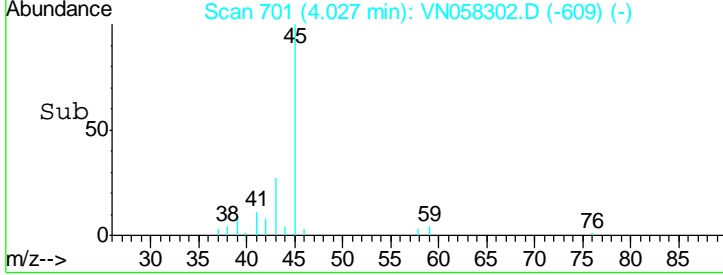
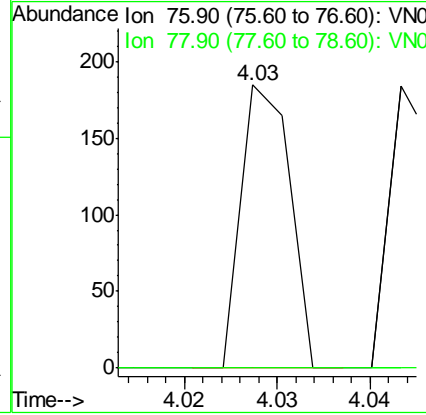
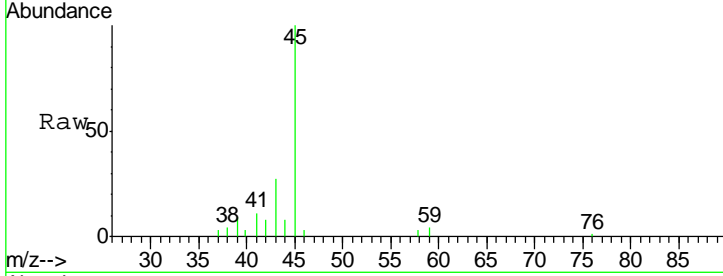




#17
 Carbon Disulfide
 Concen: 0.287 ug/l
 RT: 4.03 min Scan# 701
 Delta R.T. -0.01 min
 Lab File: VN058302.D
 Acq: 23 Sep 2019 18:50

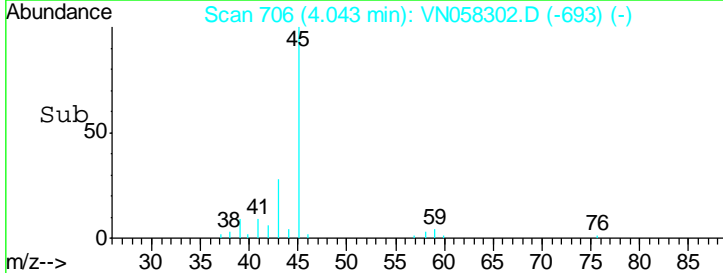
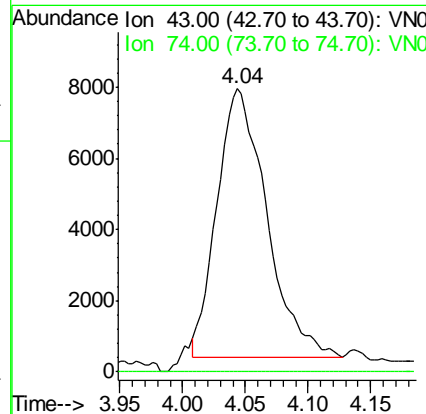
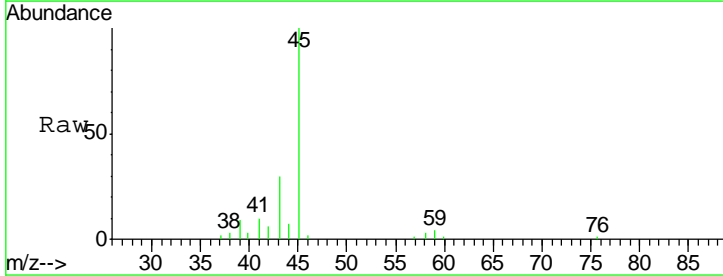
Instrument :
 MSVOA_N
ClientSampled :
 DUP05-20190917

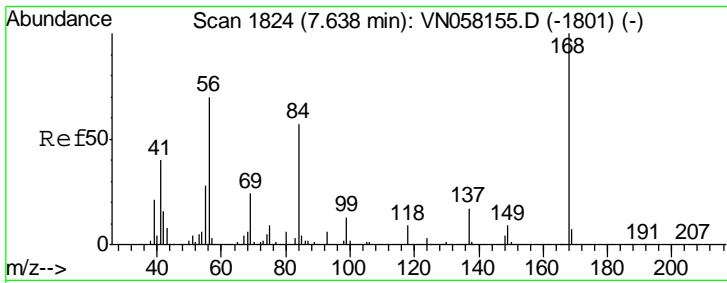
Tgt Ion	Resp	Lower	Upper
76	100		
78	0.0	7.7	11.5#



#18
 Methyl Acetate
 Concen: 3.486 ug/l
 RT: 4.04 min Scan# 706
 Delta R.T. -0.26 min
 Lab File: VN058302.D
 Acq: 23 Sep 2019 18:50

Tgt Ion	Resp	Lower	Upper
43	100		
74	0.0	18.0	27.0#

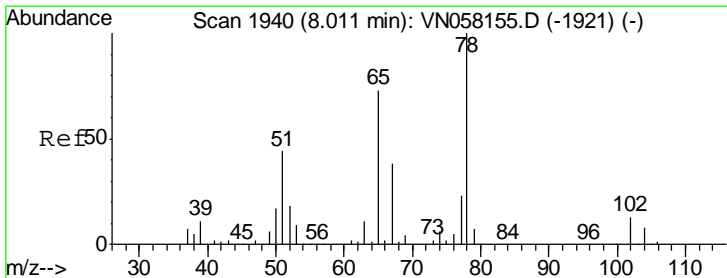
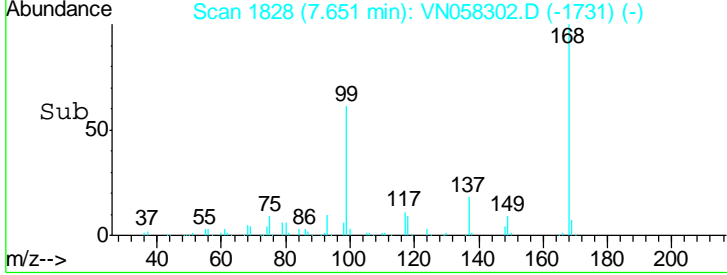
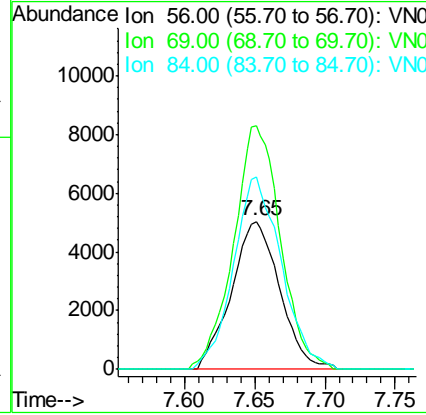
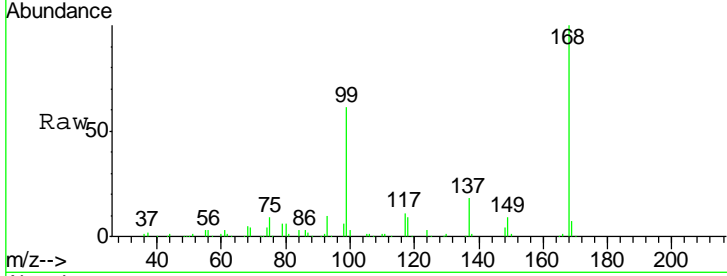




#31
 Cyclohexane
 Concen: Below Cal
 RT: 7.65 min Scan# 1828
 Delta R.T. 0.01 min
 Lab File: VN058302.D
 Acq: 23 Sep 2019 18:50

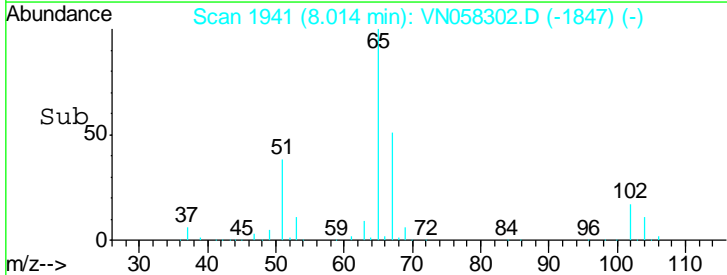
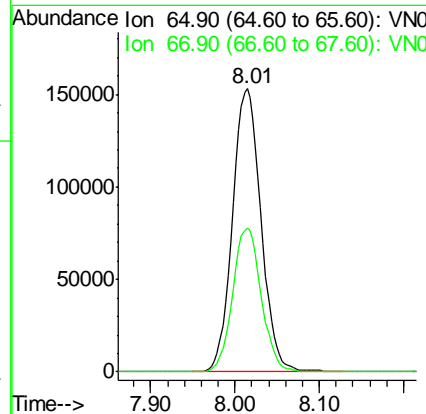
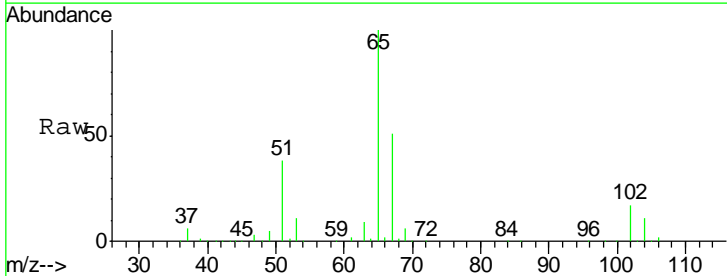
Instrument :
 MSVOA_N
 ClientSampled :
 DUP05-20190917

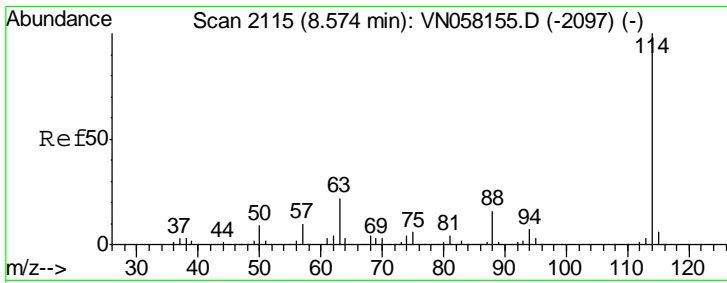
Tgt Ion	Resp	Lower	Upper
56	12099		
69	164.6	27.3	40.9#
84	130.3	65.0	97.4#



#33
 1,2-Dichloroethane-d4
 Concen: 54.026 ug/l
 RT: 8.01 min Scan# 1941
 Delta R.T. 0.00 min
 Lab File: VN058302.D
 Acq: 23 Sep 2019 18:50

Tgt Ion	Resp	Lower	Upper
65	360839		
67	50.6	0.0	103.4

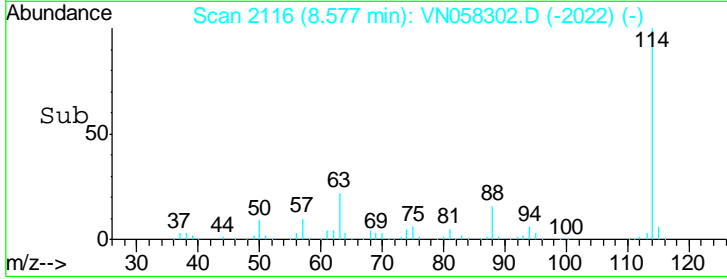
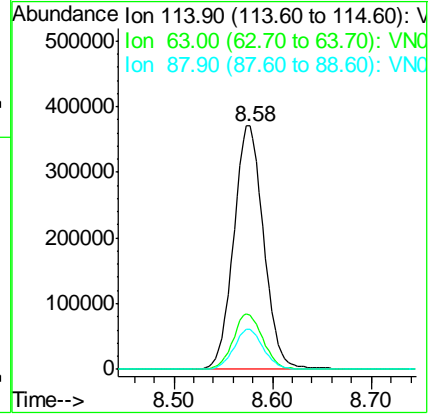
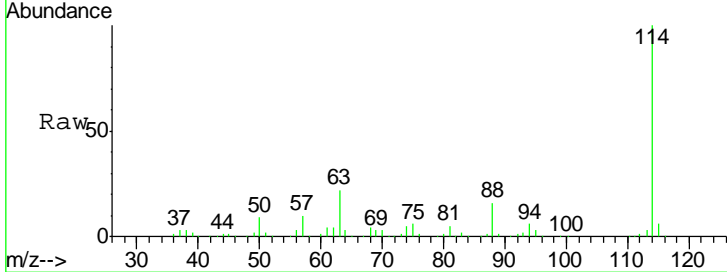




#34
 1,4-Difluorobenzene
 Concen: 50.000 ug/l
 RT: 8.58 min Scan# 2116
 Delta R.T. 0.00 min
 Lab File: VN058302.D
 Acq: 23 Sep 2019 18:50

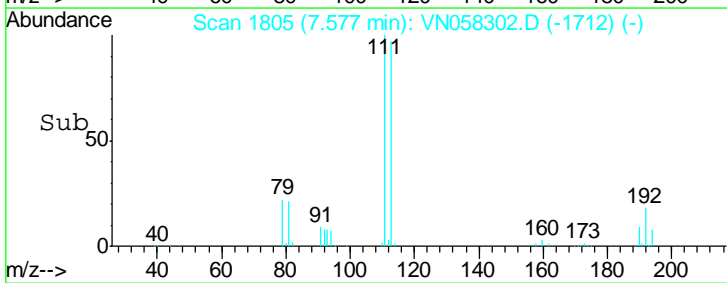
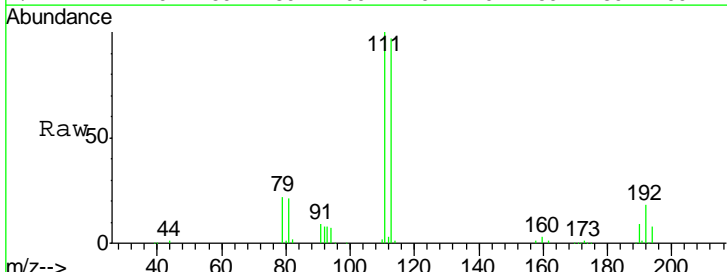
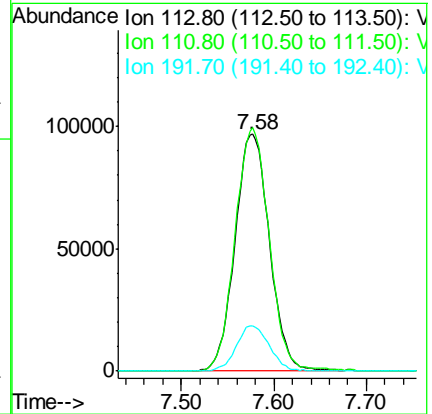
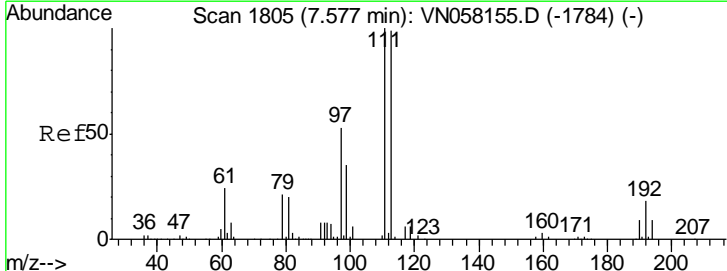
Instrument :
 MSVOA_N
 ClientSampled :
 DUP05-20190917

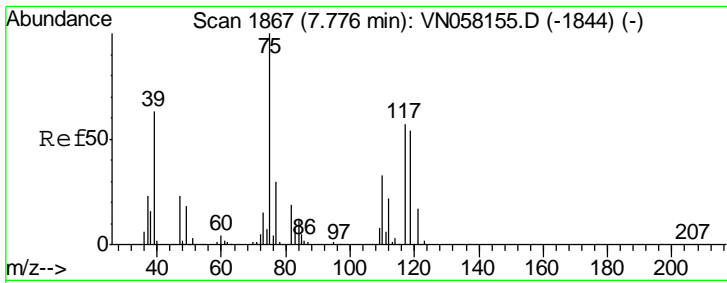
Tgt Ion	Resp	Lower	Upper
114	100		
63	22.4	0.0	44.2
88	16.4	0.0	31.6



#35
 Dibromofluoromethane
 Concen: 52.345 ug/l
 RT: 7.58 min Scan# 1805
 Delta R.T. 0.00 min
 Lab File: VN058302.D
 Acq: 23 Sep 2019 18:50

Tgt Ion	Resp	Lower	Upper
113	100		
111	101.6	81.8	122.6
192	18.4	14.5	21.7

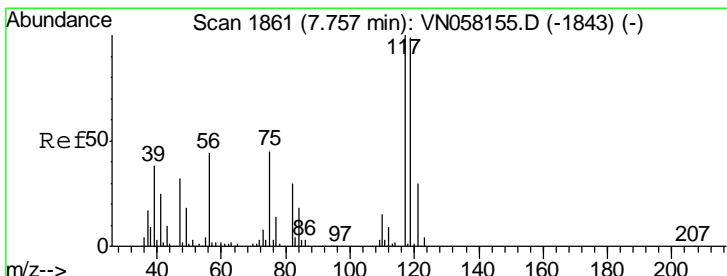
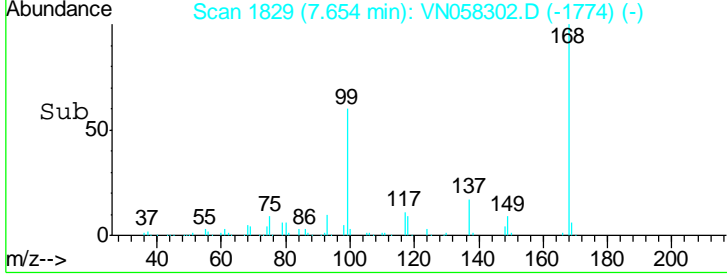
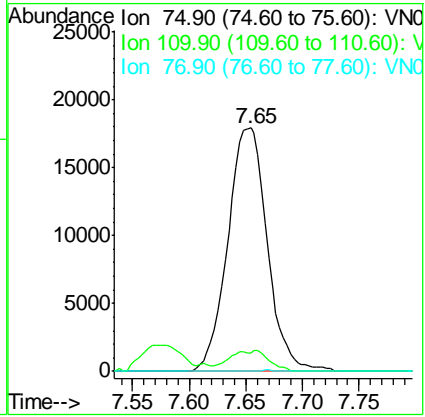
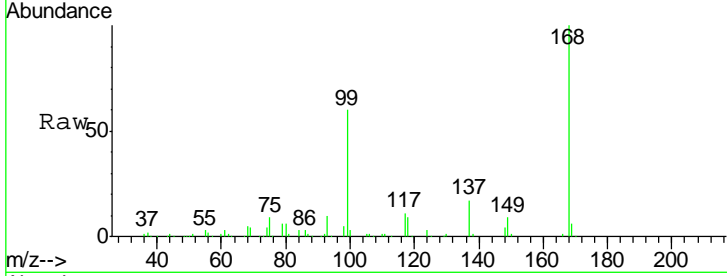




#36
 1,1-Dichloropropene
 Concen: 7.695 ug/l
 RT: 7.65 min Scan# 1829
 Delta R.T. -0.12 min
 Lab File: VN058302.D
 Acq: 23 Sep 2019 18:50

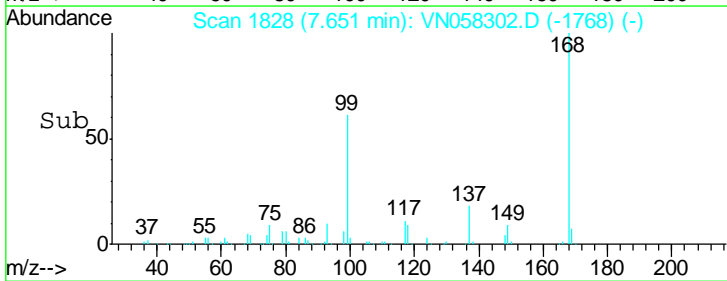
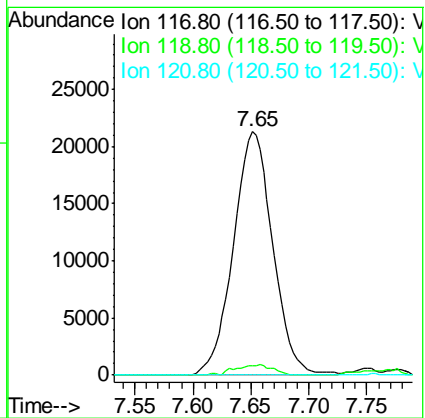
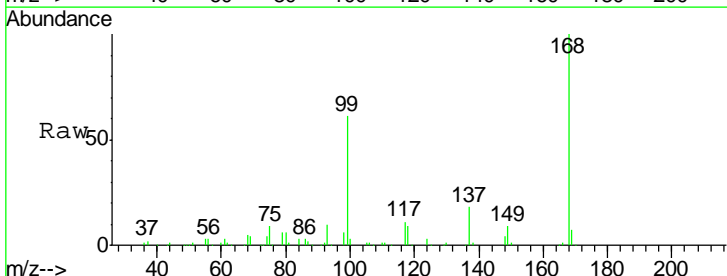
Instrument :
 MSVOA_N
 ClientSampled :
 DUP05-20190917

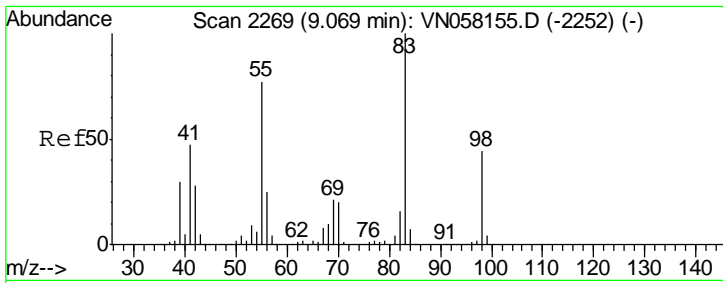
Tgt Ion	Resp	Lower	Upper
75	100		
110	3.1	16.6	49.7#
77	0.0	24.3	36.5#



#38
 Carbon Tetrachloride
 Concen: 8.811 ug/l
 RT: 7.65 min Scan# 1828
 Delta R.T. -0.11 min
 Lab File: VN058302.D
 Acq: 23 Sep 2019 18:50

Tgt Ion	Resp	Lower	Upper
117	100		
119	3.8	78.6	117.8#
121	0.0	24.1	36.1#

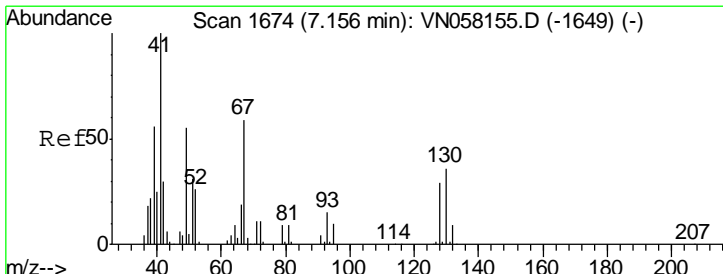
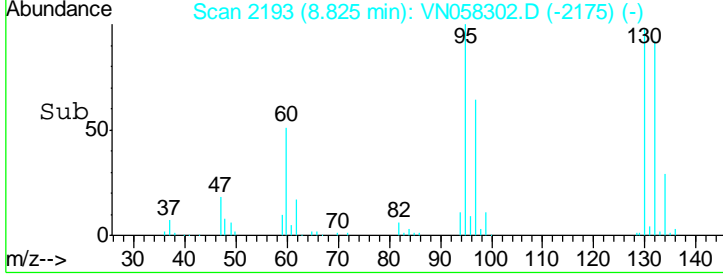
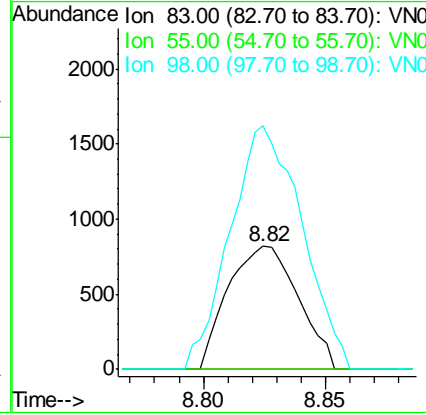
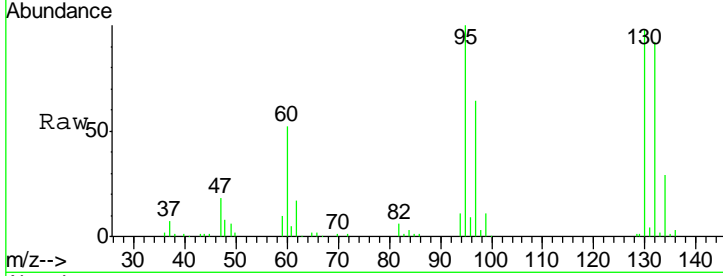




#39
 Methylcyclohexane
 Concen: 0.370 ug/l
 RT: 8.82 min Scan# 2193
 Delta R.T. -0.24 min
 Lab File: VN058302.D
 Acq: 23 Sep 2019 18:50

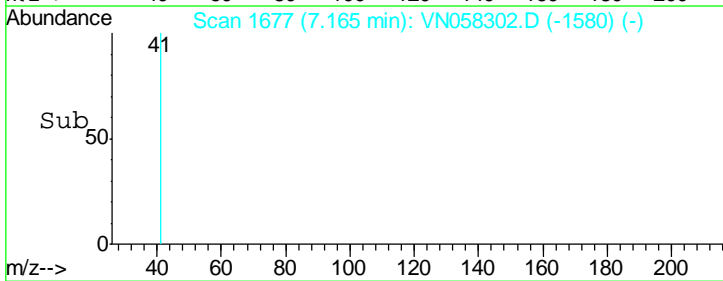
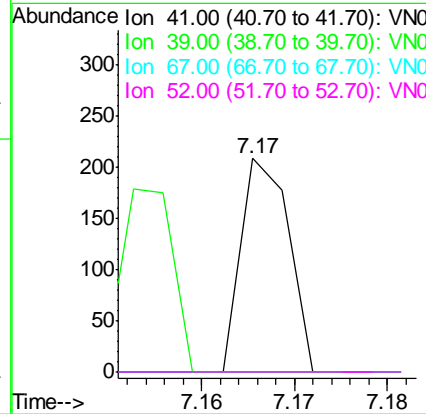
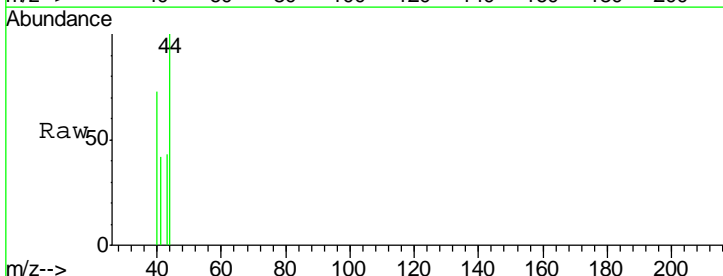
Instrument :
 MSVOA_N
 ClientSampled :
 DUP05-20190917

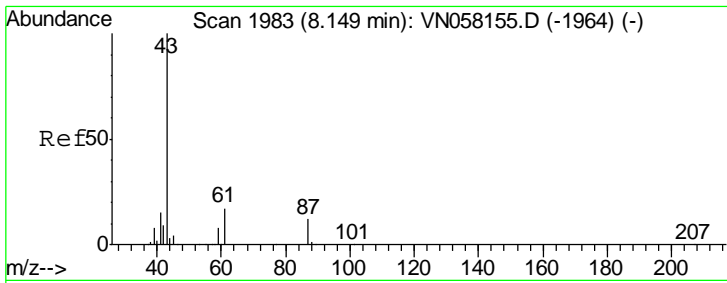
Tgt Ion	Resp	Lower	Upper
83	1637		
83	100		
55	0.0	61.9	92.9#
98	178.4	35.4	53.2#



#41
 Methacrylonitrile
 Concen: 0.936 ug/l
 RT: 7.17 min Scan# 1677
 Delta R.T. 0.01 min
 Lab File: VN058302.D
 Acq: 23 Sep 2019 18:50

Tgt Ion	Resp	Lower	Upper
41	75		
41	100		
39	90.7	0.0	0.0#
67	0.0	0.0	0.0
52	0.0	0.0	0.0

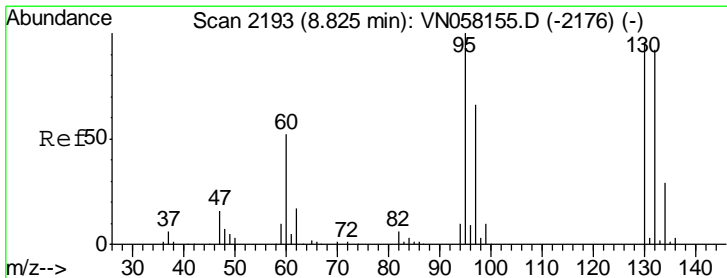
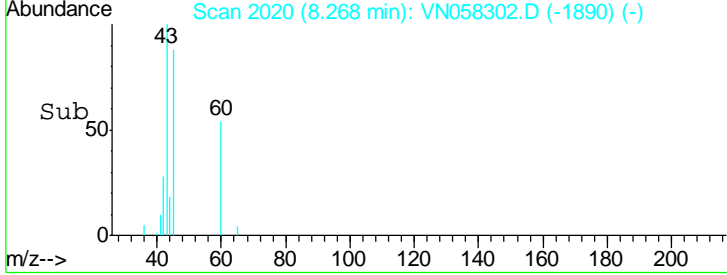
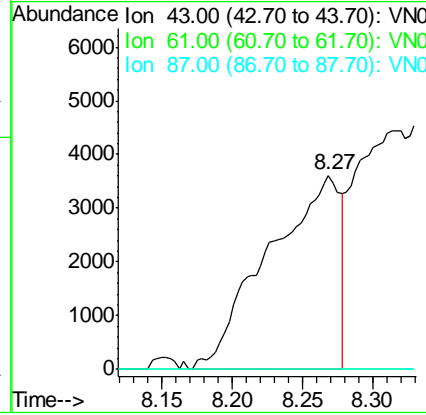
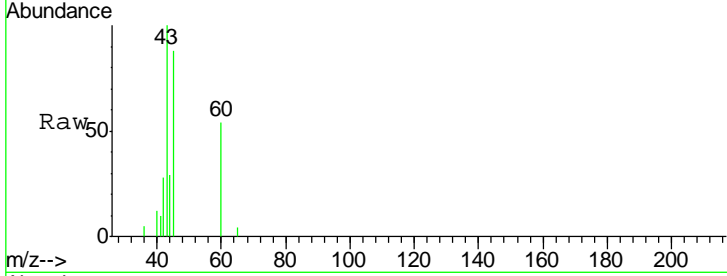




#43
 Isopropyl Acetate
 Concen: 1.165 ug/l
 RT: 8.27 min Scan# 2020
 Delta R.T. 0.12 min
 Lab File: VN058302.D
 Acq: 23 Sep 2019 18:50

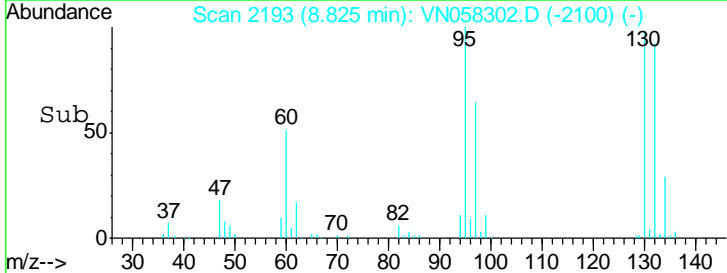
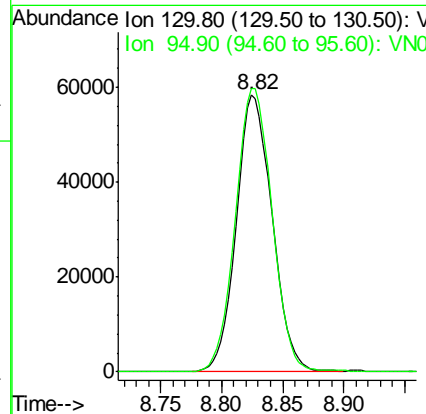
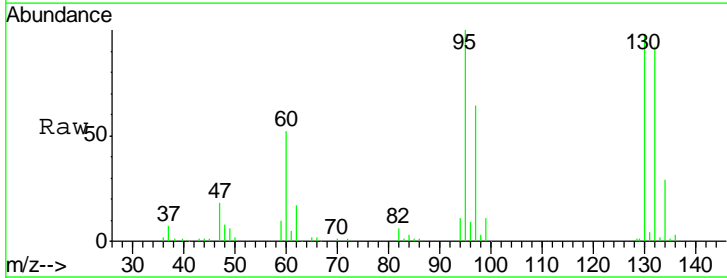
Instrument : MSVOA_N
 ClientSampled : VN058302.D
 DUP05-20190917

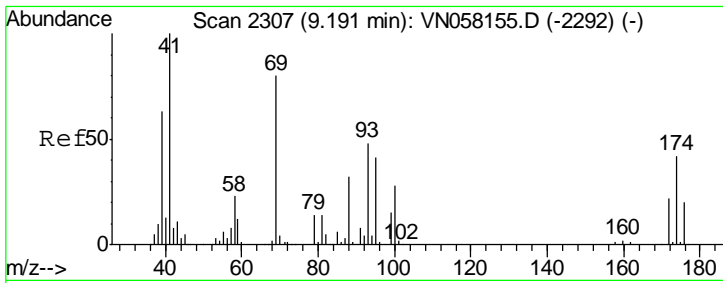
Tgt Ion	Resp	Lower	Upper
43	12779		
61	0.0	19.7	29.5#
87	0.0	9.4	14.2#



#44
 Trichloroethene
 Concen: 28.190 ug/l
 RT: 8.82 min Scan# 2193
 Delta R.T. 0.00 min
 Lab File: VN058302.D
 Acq: 23 Sep 2019 18:50

Tgt Ion	Resp	Lower	Upper
130	119240		
95	101.7	0.0	207.8

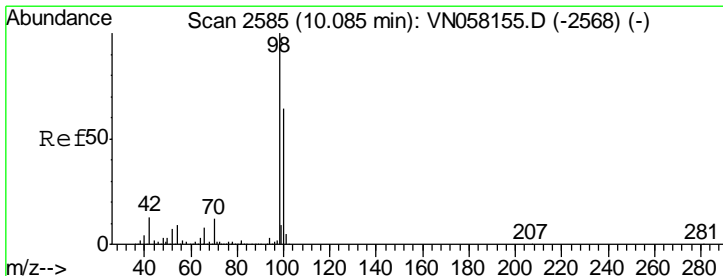
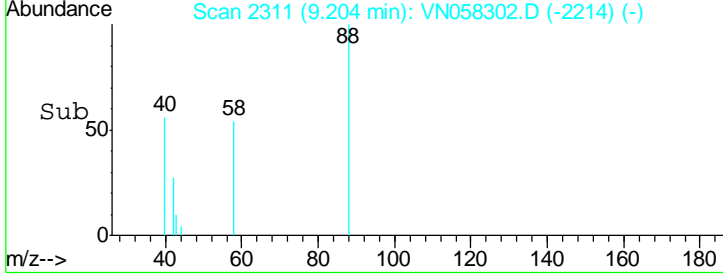
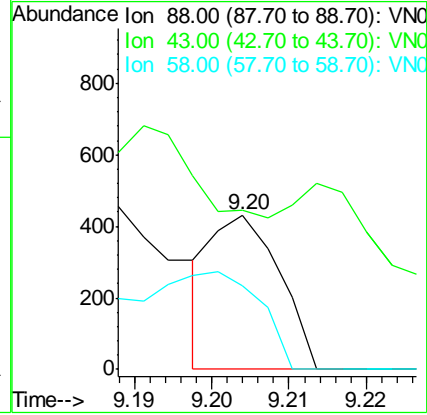
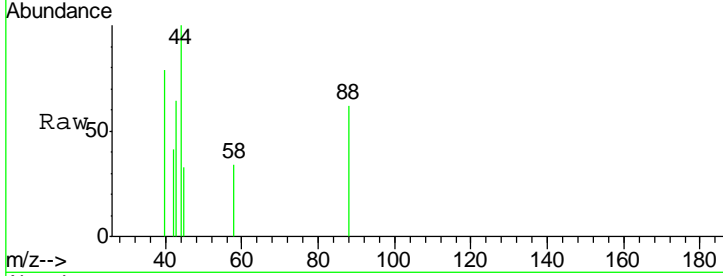




#49
 1,4-Dioxane
 Concen: 3.204 ug/l
 RT: 9.20 min Scan# 2311
 Delta R.T. 0.01 min
 Lab File: VN058302.D
 Acq: 23 Sep 2019 18:50

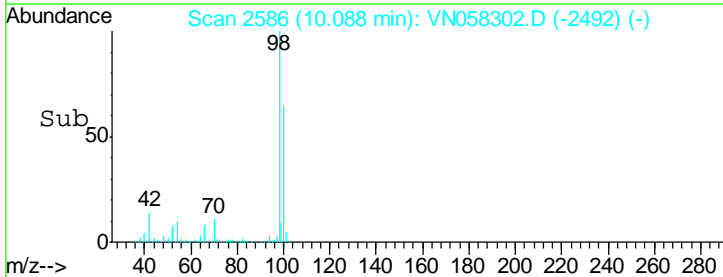
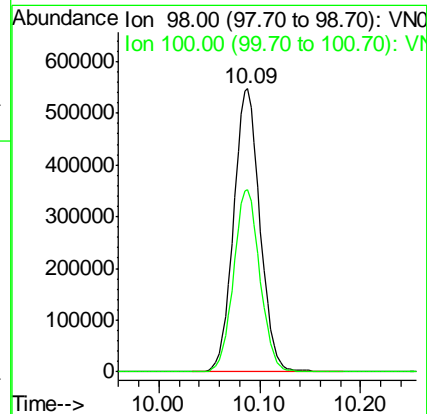
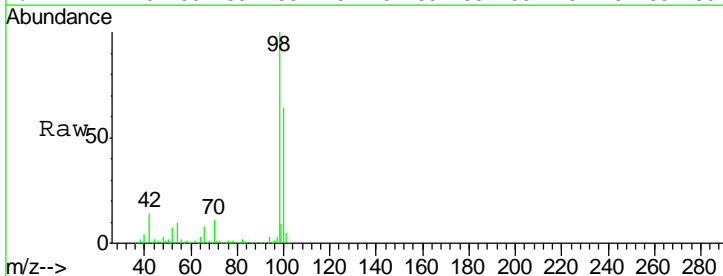
Instrument :
 MSVOA_N
ClientSampled :
 DUP05-20190917

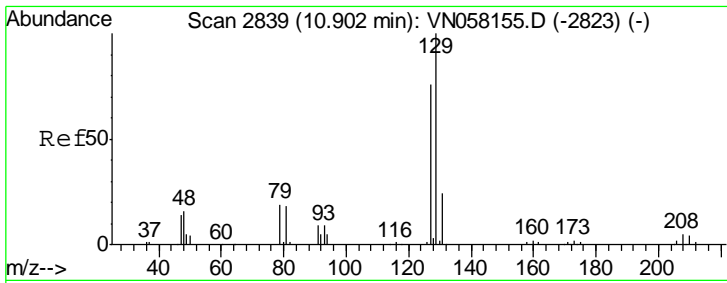
Tgt Ion	Resp	Lower	Upper
88	100		
43	126.3	27.8	41.8#
58	86.6	55.0	82.4#



#50
 Toluene-d8
 Concen: 53.548 ug/l
 RT: 10.09 min Scan# 2586
 Delta R.T. 0.00 min
 Lab File: VN058302.D
 Acq: 23 Sep 2019 18:50

Tgt Ion	Resp	Lower	Upper
98	100		
100	64.3	51.1	76.7

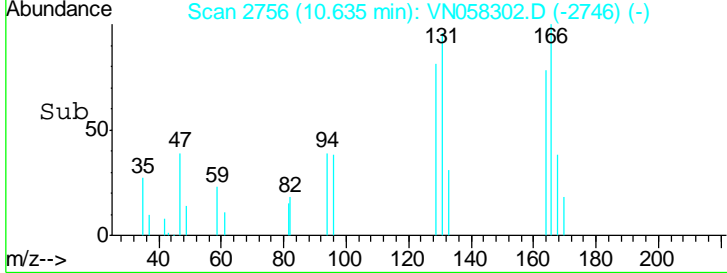
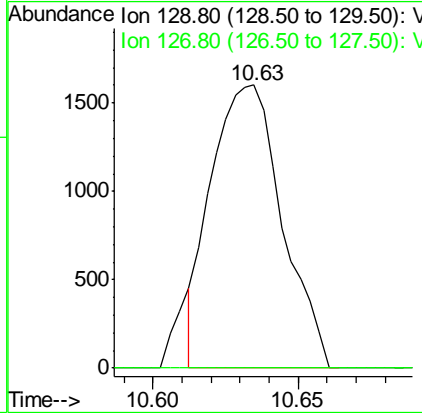
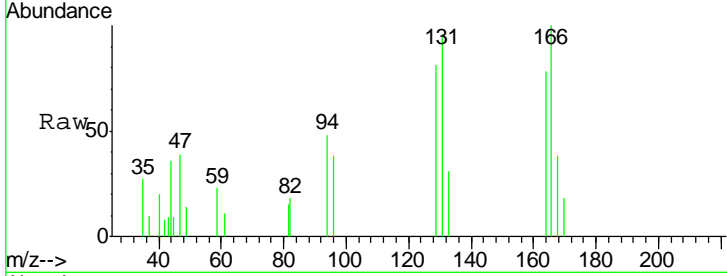




#60
 Dibromochloromethane
 Concen: 0.589 ug/l
 RT: 10.63 min Scan# 2756
 Delta R.T. -0.27 min
 Lab File: VN058302.D
 Acq: 23 Sep 2019 18:50

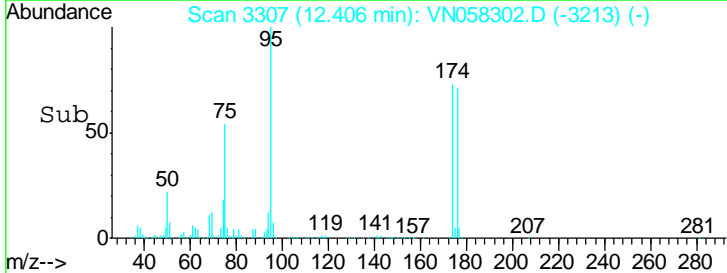
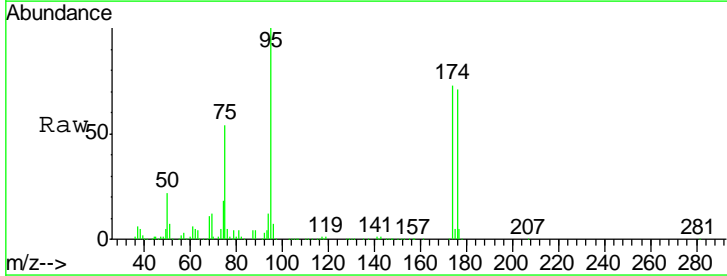
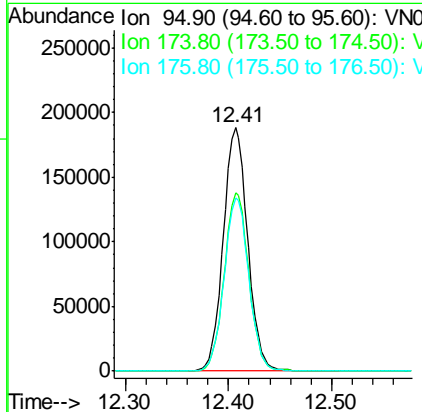
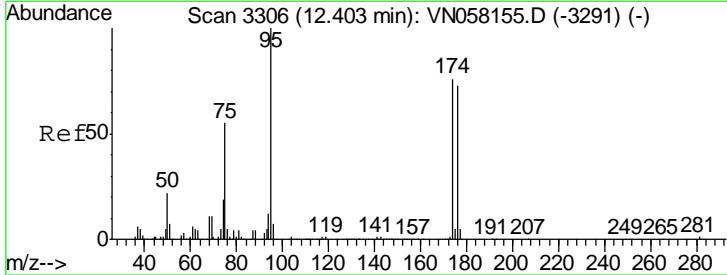
Instrument : MSVOA_N
 ClientSampled : DUP05-20190917

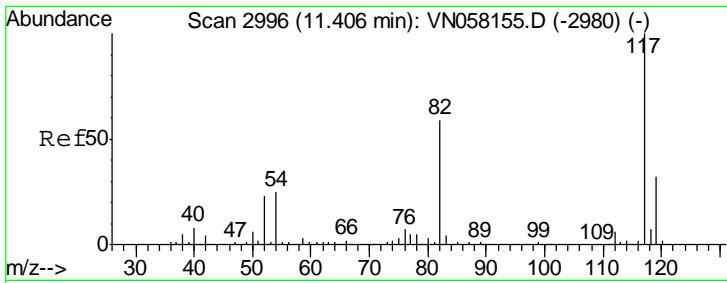
Tgt Ion	Resp	Lower	Upper
129	100		
127	0.0	38.7	116.1#



#62
 4-Bromofluorobenzene
 Concen: 44.979 ug/l
 RT: 12.41 min Scan# 3307
 Delta R.T. 0.00 min
 Lab File: VN058302.D
 Acq: 23 Sep 2019 18:50

Tgt Ion	Resp	Lower	Upper
95	100		
174	73.9	0.0	152.2
176	71.8	0.0	148.0

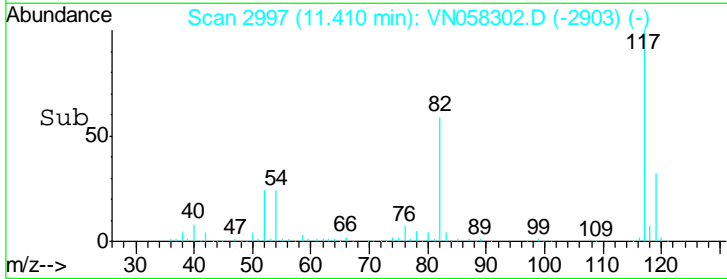
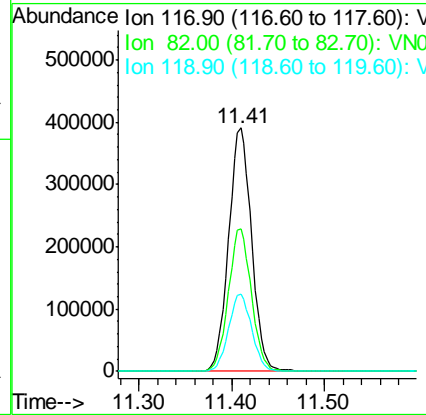
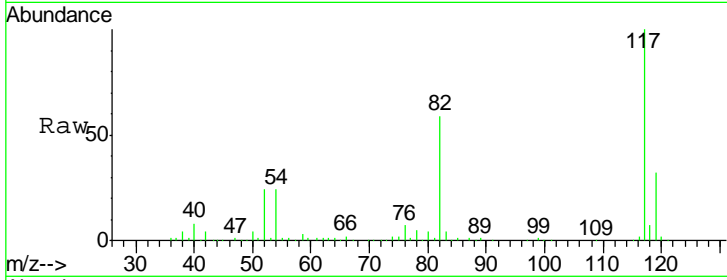




#63
 Chlorobenzene-d5
 Concen: 50.000 ug/l
 RT: 11.41 min Scan# 2997
 Delta R.T. 0.00 min
 Lab File: VN058302.D
 Acq: 23 Sep 2019 18:50

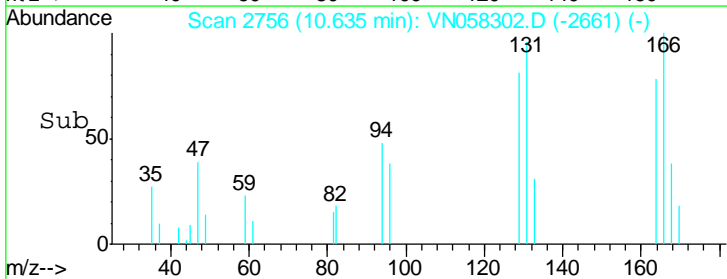
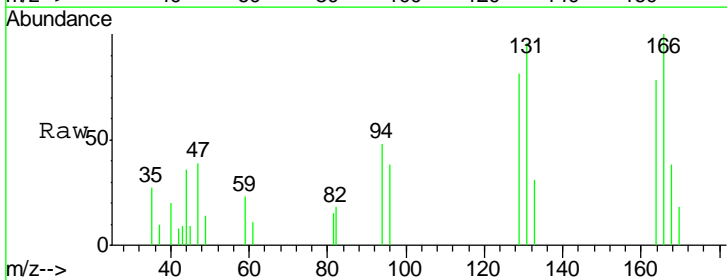
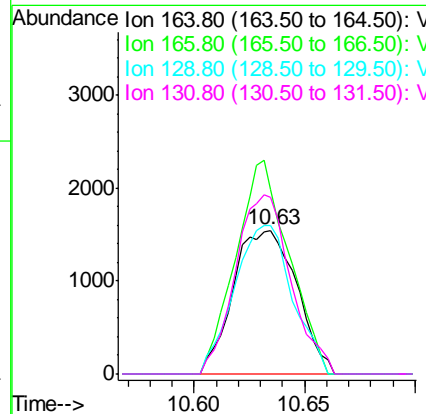
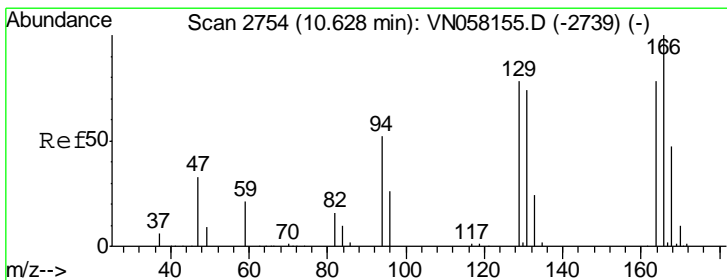
Instrument : MSVOA_N
 ClientSampled : DUP05-20190917

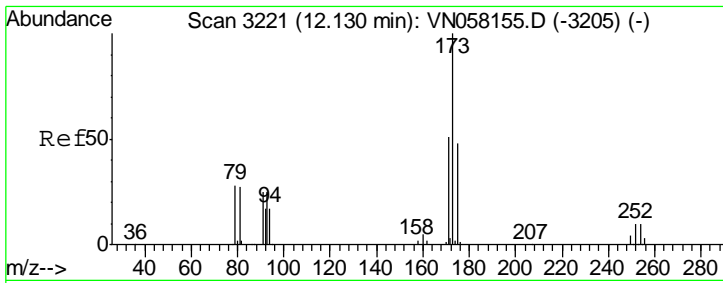
Tgt Ion	Resp	Lower	Upper
117	100		
82	58.6	46.9	70.3
119	31.7	25.3	37.9



#64
 Tetrachloroethene
 Concen: 0.942 ug/l
 RT: 10.63 min Scan# 2756
 Delta R.T. 0.01 min
 Lab File: VN058302.D
 Acq: 23 Sep 2019 18:50

Tgt Ion	Resp	Lower	Upper
164	100		
166	128.2	102.2	153.4
129	103.8	79.6	119.4
131	123.5	76.0	114.0#



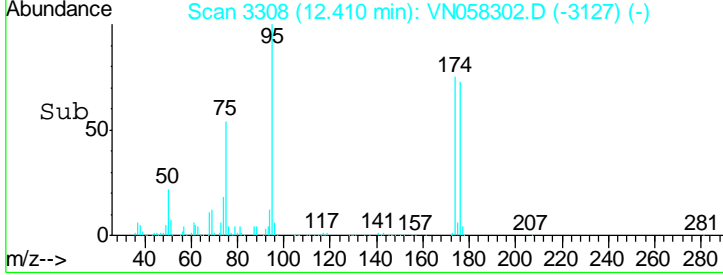
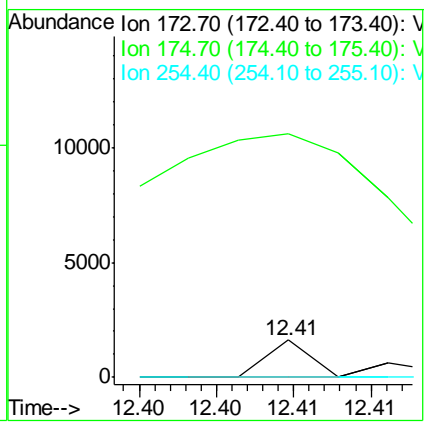
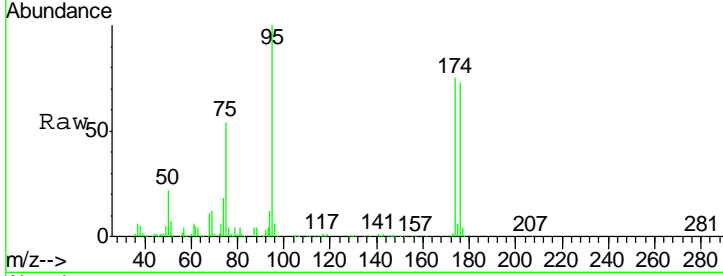


#71
 Bromoform
 Concen: 3.686 ug/l
 RT: 12.41 min Scan# 3308
 Delta R.T. 0.28 min
 Lab File: VN058302.D
 Acq: 23 Sep 2019 18:50

Instrument :
 MSVOA_N
ClientSampled :
 DUP05-20190917

Tgt Ion: 173 Resp: 311

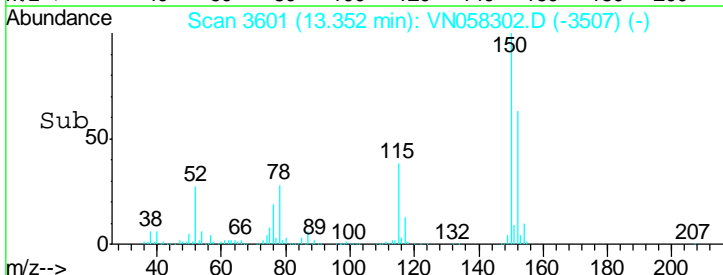
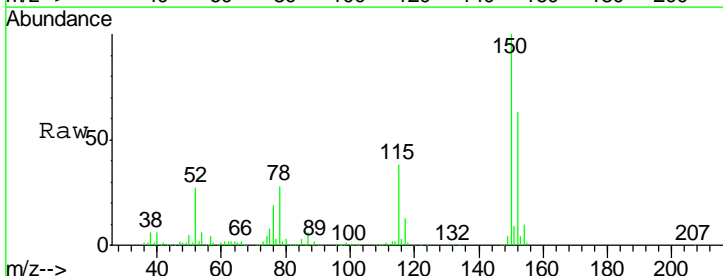
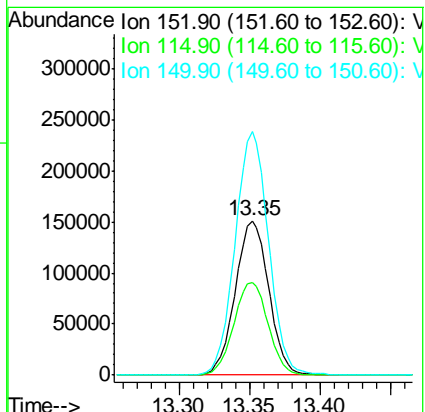
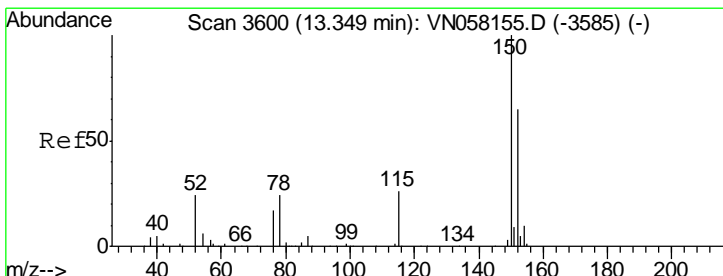
Ion	Ratio	Lower	Upper
173	100		
175	4584.6	24.2	72.6#
254	0.0	0.1	0.1#

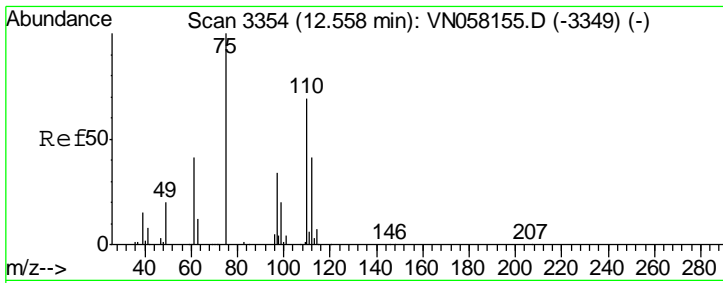


#72
 1,4-Dichlorobenzene-d4
 Concen: 50.000 ug/l
 RT: 13.35 min Scan# 3601
 Delta R.T. 0.00 min
 Lab File: VN058302.D
 Acq: 23 Sep 2019 18:50

Tgt Ion: 152 Resp: 252890

Ion	Ratio	Lower	Upper
152	100		
115	61.2	30.1	90.3
150	156.9	0.0	346.4

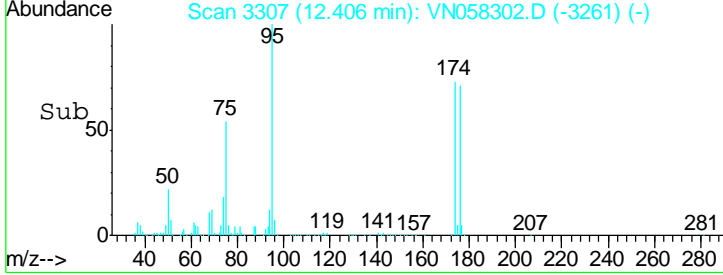
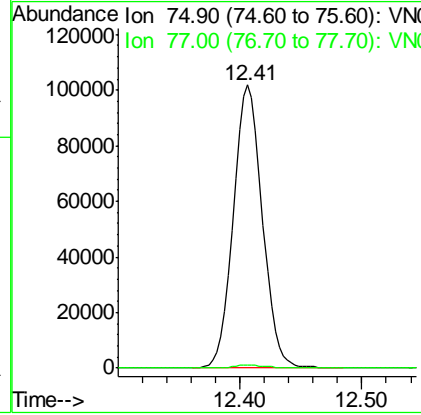
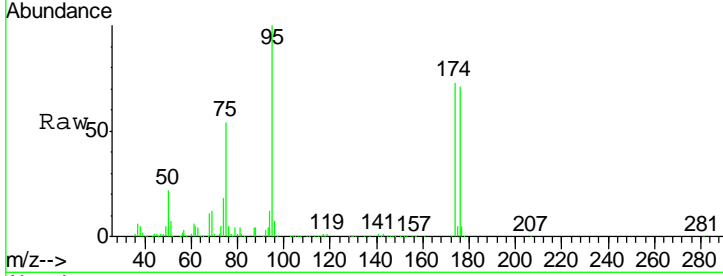




#76
 1,2,3-Trichloropropane
 Concen: 37.299 ug/l
 RT: 12.41 min Scan# 3307
 Delta R.T. -0.15 min
 Lab File: VN058302.D
 Acq: 23 Sep 2019 18:50

Instrument :
 MSVOA_N
ClientSampled :
 DUP05-20190917

Tgt Ion	Resp	Lower	Upper
75	168813		
77	1.2	0.0	0.0#



#81
 trans-1,4-Dichloro-2-butene
 Concen: 103.959 ug/l
 RT: 12.41 min Scan# 3307
 Delta R.T. 0.10 min
 Lab File: VN058302.D
 Acq: 23 Sep 2019 18:50

Tgt Ion	Resp	Lower	Upper
75	168813		
53	0.0	90.1	135.1#
89	0.0	36.2	54.2#

