

Data Path : Z:\VOASRV\HPCHEM1\MSVOA N\DATA\VN092319\  
 Data File : VN058320.D  
 Acq On : 24 Sep 2019 2:15  
 Operator : JC/SP  
 Sample : K4997-12  
 Misc : 5.00mL/MSVOA N/WATER  
 ALS Vial : 49 Sample Multiplier: 1

Instrument :  
 MSVOA\_N  
 ClientSampled :  
 WC-08-091919

Quant Time: Sep 24 07:09:09 2019  
 Quant Method : Z:\VOASRV\HPCHEM1\MSVOA\_N\METHODS\82N091819W.M  
 Quant Title : SW846 8260  
 QLast Update : Thu Sep 19 09:27:53 2019  
 Response via : Initial Calibration

Internal Standards	R.T.	QIon	Response	Conc	Units	Dev(Min)
1) Pentafluorobenzene	7.65	168	446616	50.00	ug/l	0.00
34) 1,4-Difluorobenzene	8.58	114	750091	50.00	ug/l	0.00
63) Chlorobenzene-d5	11.41	117	658813	50.00	ug/l	0.00
72) 1,4-Dichlorobenzene-d4	13.35	152	263098	50.00	ug/l	0.00

System Monitoring Compounds

33) 1,2-Dichloroethane-d4	8.01	65	348254	55.99	ug/l	0.00
Spiked Amount	50.000		Recovery	=	111.98%	
35) Dibromofluoromethane	7.58	113	237065	51.99	ug/l	0.00
Spiked Amount	50.000		Recovery	=	103.98%	
50) Toluene-d8	10.09	98	965179	54.33	ug/l	0.00
Spiked Amount	50.000		Recovery	=	108.66%	
62) 4-Bromofluorobenzene	12.41	95	307519	46.60	ug/l	0.00
Spiked Amount	50.000		Recovery	=	93.20%	

Target Compounds

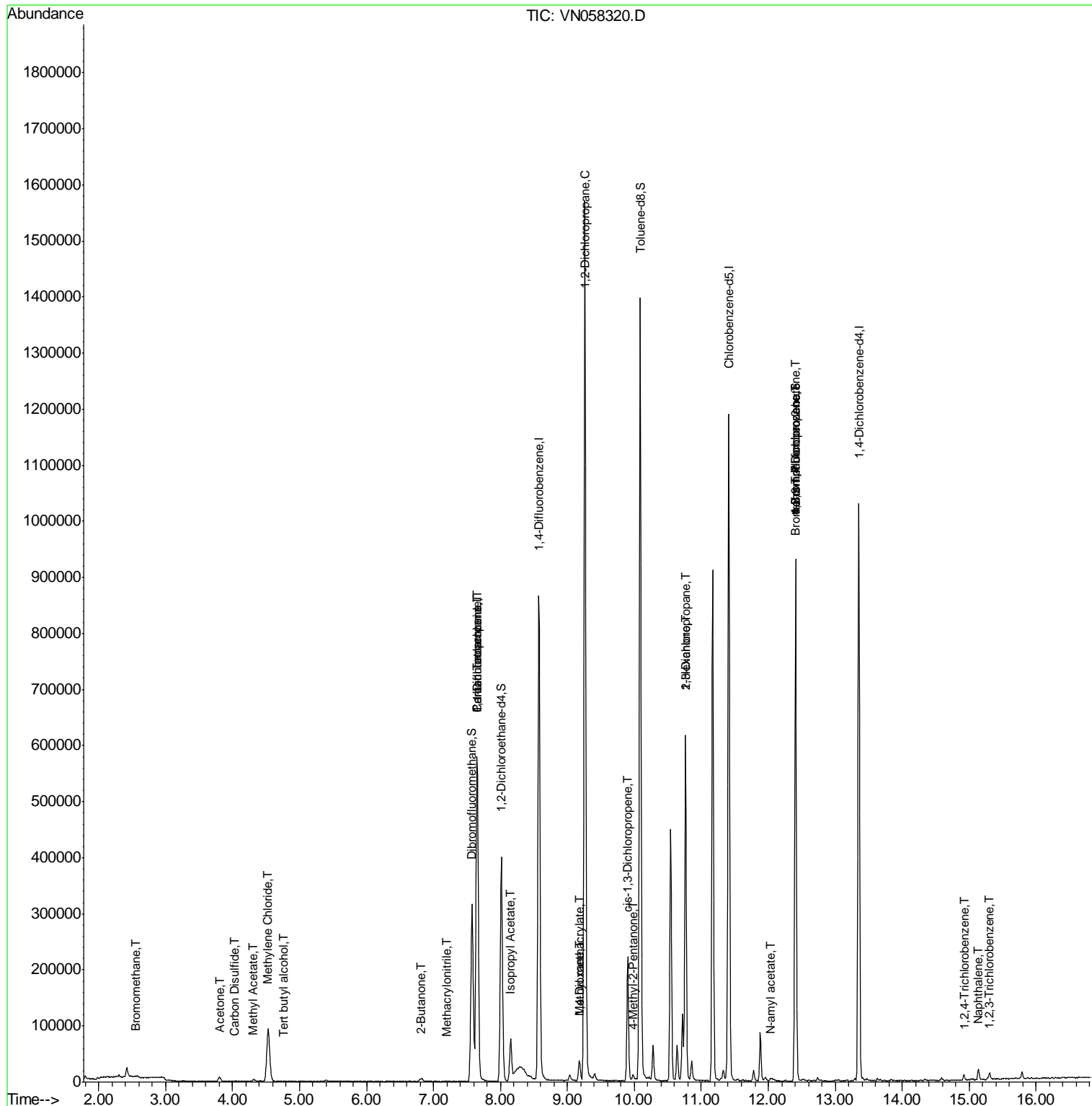
	R.T.	QIon	Response	Conc	Units	Qvalue
3) Chloromethane	2.04	50	437	Below Cal	#	42
4) Vinyl Chloride	2.43	62	63	Below Cal		92
5) Bromomethane	2.55	94	592	1.079	ug/l #	77
6) Chloroethane	2.68	64	150	Below Cal	#	44
11) Tert butyl alcohol	4.74	59	294	0.397	ug/l #	71
16) Acetone	3.80	43	11114	5.264	ug/l	97
17) Carbon Disulfide	4.03	76	313	0.352	ug/l #	74
18) Methyl Acetate	4.31	43	5183	0.933	ug/l	94
20) Methylene Chloride	4.53	84	67648	18.158	ug/l	99
25) 2-Butanone	6.82	43	684	0.238	ug/l #	87
31) Cyclohexane	7.65	56	11887	Below Cal	#	5
36) 1,1-Dichloropropene	7.65	75	39422	7.288	ug/l #	47
38) Carbon Tetrachloride	7.65	117	46252	8.506	ug/l #	15
41) Methacrylonitrile	7.20	41	346	1.031	ug/l #	100
43) Isopropyl Acetate	8.15	43	92412	8.815	ug/l #	92
45) 1,2-Dichloropropane	9.26	63	1742	0.353	ug/l #	45
48) Methyl methacrylate	9.17	41	5660	1.189	ug/l #	15
49) 1,4-Dioxane	9.19	88	63	0.806	ug/l #	1
51) 4-Methyl-2-Pentanone	9.98	43	5922	1.063	ug/l #	87
54) cis-1,3-Dichloropropene	9.90	75	37800	5.318	ug/l #	72
57) 1,3-Dichloropropane	10.76	76	6364	0.806	ug/l #	43
59) 2-Hexanone	10.76	43	98384	23.788	ug/l #	53
71) Bromoform	12.39	173	256	3.671	ug/l #	29
74) N-amyl acetate	12.04	43	3255	0.472	ug/l #	52
76) 1,2,3-Trichloropropane	12.41	75	170228	36.152	ug/l #	100
81) trans-1,4-Dichloro-2-buten	12.41	75	170228	100.941	ug/l #	5
93) 1,2,4-Trichlorobenzene	14.92	180	3153	0.650	ug/l	97
95) Naphthalene	15.14	128	15687	1.248	ug/l	97
96) 1,2,3-Trichlorobenzene	15.30	180	3782	0.825	ug/l	97

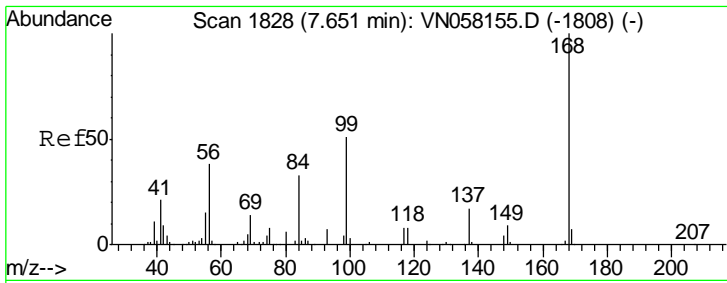
(#) = qualifier out of range (m) = manual integration (+) = signals summed

Data Path : Z:\VOASRV\HPCHEM1\MSVOA N\DATA\VN092319\  
 Data File : VN058320.D  
 Acq On : 24 Sep 2019 2:15  
 Operator : JC/SP  
 Sample : K4997-12  
 Misc : 5.00mL/MSVOA N/WATER  
 ALS Vial : 49 Sample Multiplier: 1

Instrument :  
 MSVOA\_N  
 Client Sampled :  
 WC-08-091919

Quant Time: Sep 24 07:09:09 2019  
 Quant Method : Z:\VOASRV\HPCHEM1\MSVOA\_N\METHODS\82N091819W.M  
 Quant Title : SW846 8260  
 QLast Update : Thu Sep 19 09:27:53 2019  
 Response via : Initial Calibration

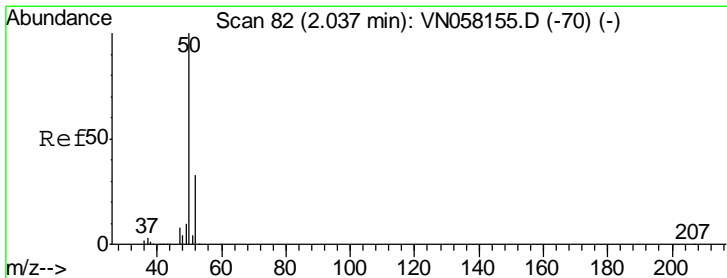
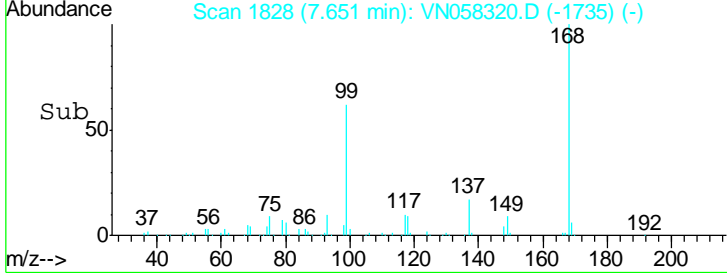
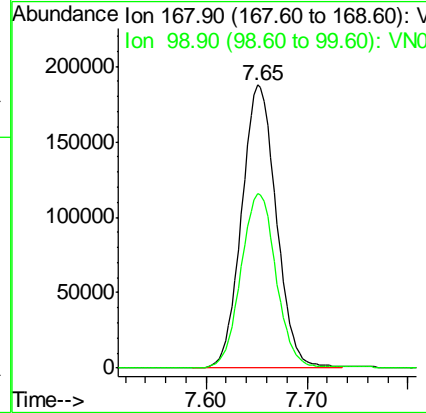
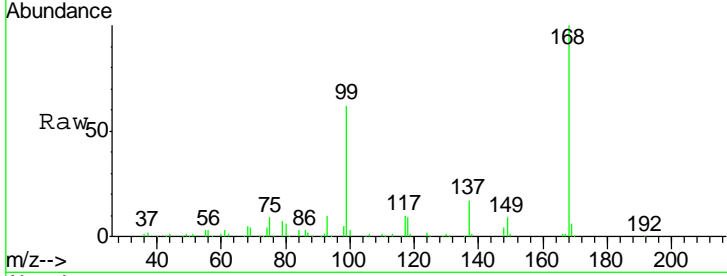




#1  
 Pentafluorobenzene  
 Concen: 50.000 ug/l  
 RT: 7.65 min Scan# 1828  
 Delta R.T. 0.00 min  
 Lab File: VN058320.D  
 Acq: 24 Sep 2019 2:15

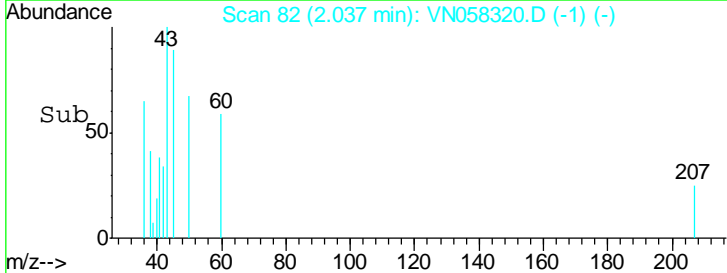
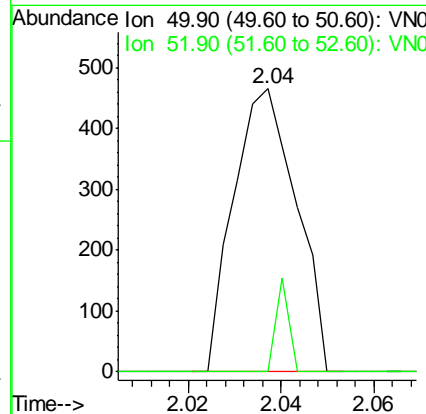
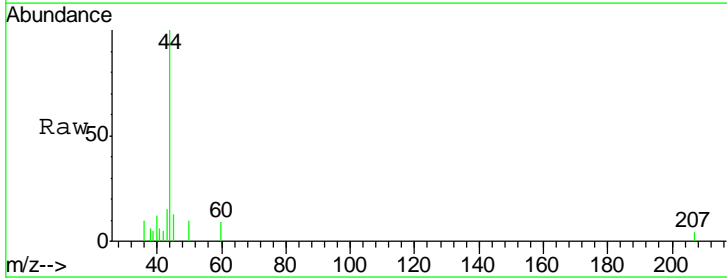
Instrument :  
 MSVOA\_N  
 ClientSampled :  
 WC-08-091919

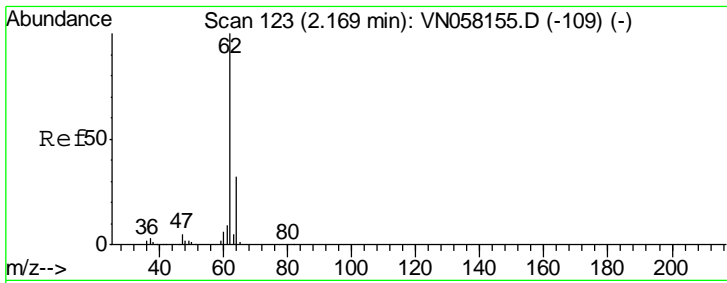
Tgt Ion: 168 Resp: 446616  
 Ion Ratio Lower Upper  
 168 100  
 99 61.5 47.4 71.2



#3  
 Chloromethane  
 Concen: Below Cal  
 RT: 2.04 min Scan# 82  
 Delta R.T. 0.00 min  
 Lab File: VN058320.D  
 Acq: 24 Sep 2019 2:15

Tgt Ion: 50 Resp: 437  
 Ion Ratio Lower Upper  
 50 100  
 52 0.0 26.3 39.5#

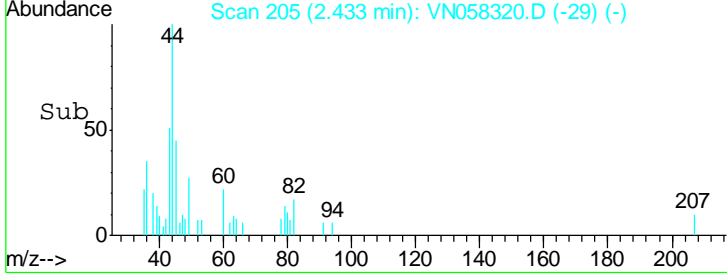
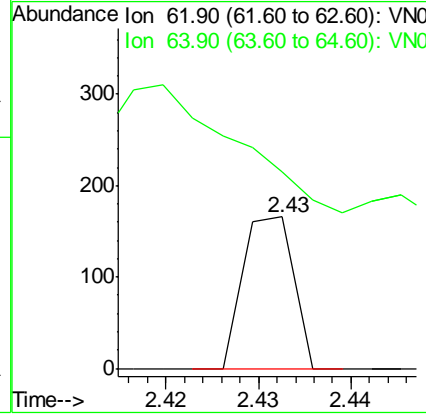
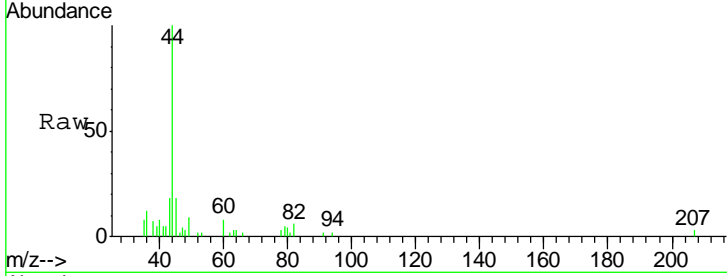




#4  
 Vinyl Chloride  
 Concen: Below Cal  
 RT: 2.43 min Scan# 205  
 Delta R.T. 0.26 min  
 Lab File: VN058320.D  
 Acq: 24 Sep 2019 2:15

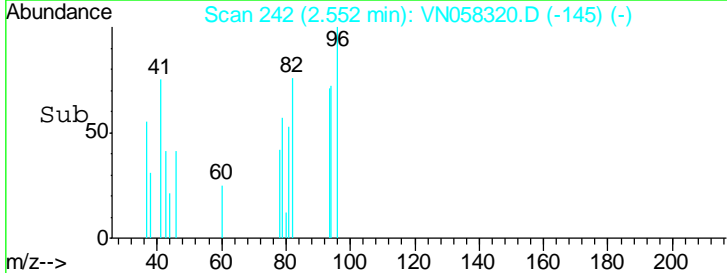
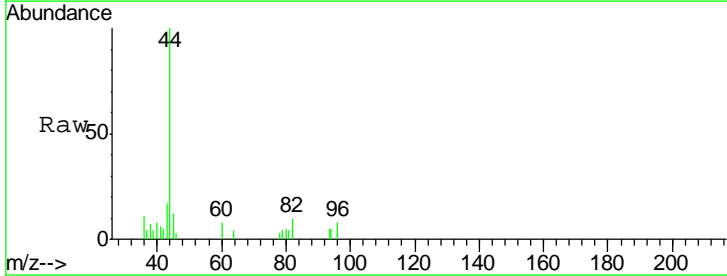
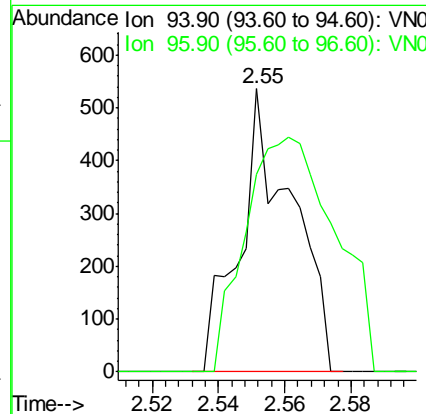
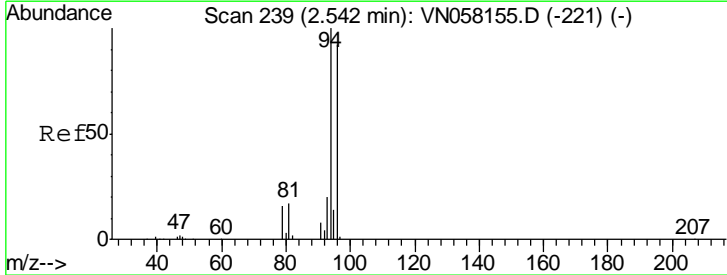
Instrument : MSVOA\_N  
 ClientSampled : WC-08-091919

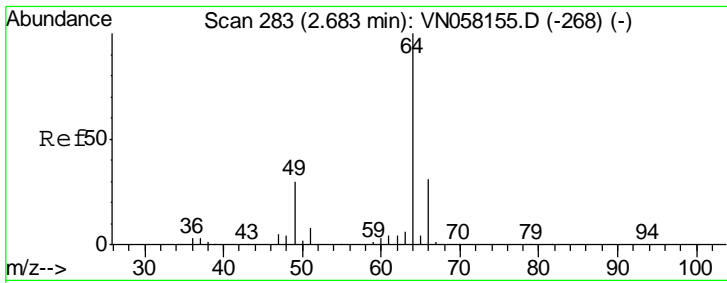
Tgt Ion	Resp	Lower	Upper
62	100		
64	27.1	25.4	38.2



#5  
 Bromomethane  
 Concen: 1.079 ug/l  
 RT: 2.55 min Scan# 242  
 Delta R.T. 0.01 min  
 Lab File: VN058320.D  
 Acq: 24 Sep 2019 2:15

Tgt Ion	Resp	Lower	Upper
94	100		
96	69.6	73.3	109.9#

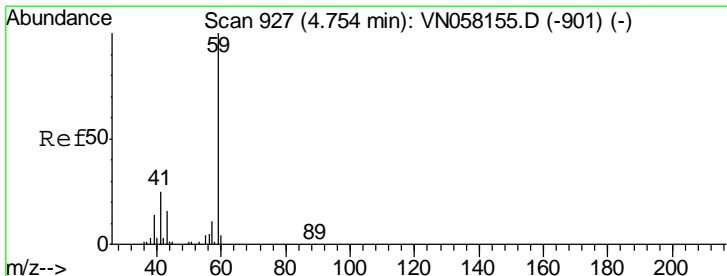
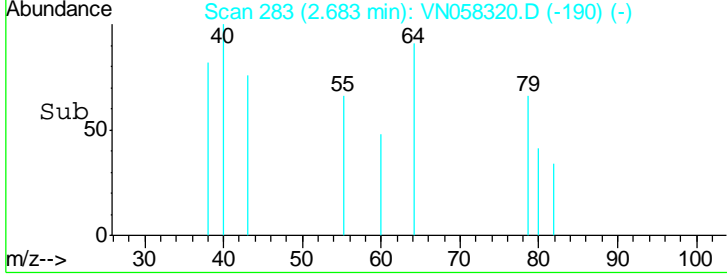
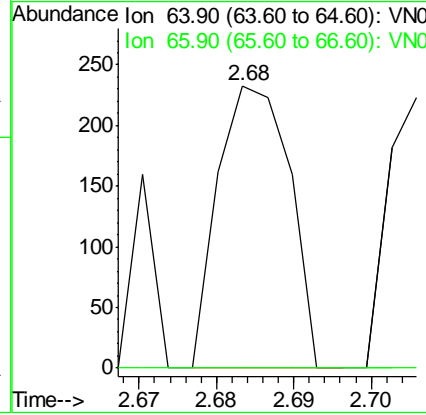
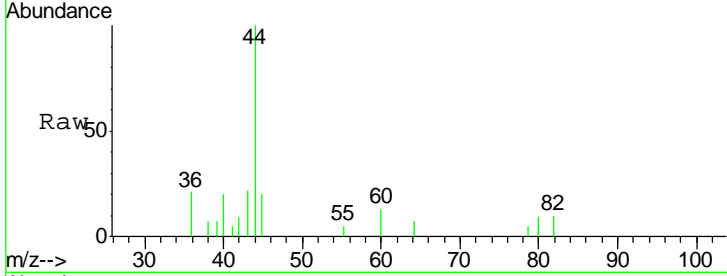




#6  
 Chloroethane  
 Concen: Below Cal  
 RT: 2.68 min Scan# 283  
 Delta R.T. 0.00 min  
 Lab File: VN058320.D  
 Acq: 24 Sep 2019 2:15

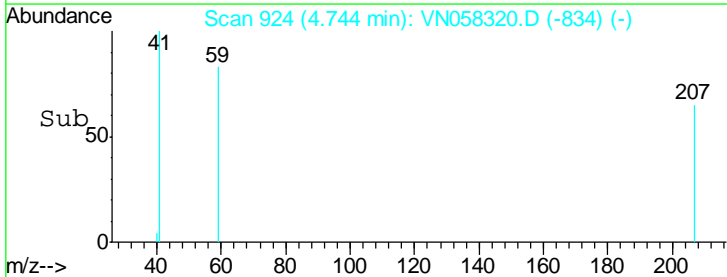
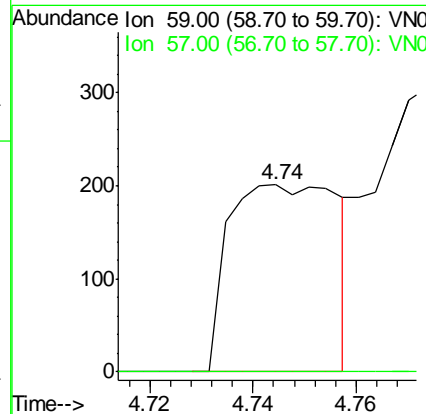
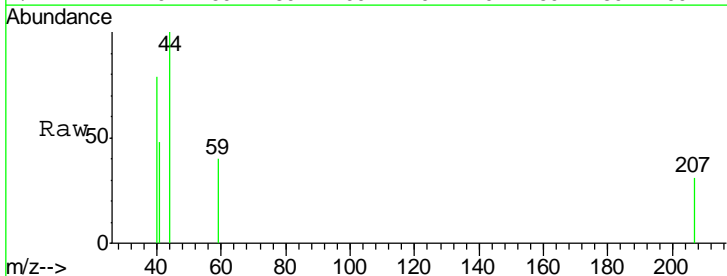
Instrument :  
 MSVOA\_N  
 ClientSampled :  
 WC-08-091919

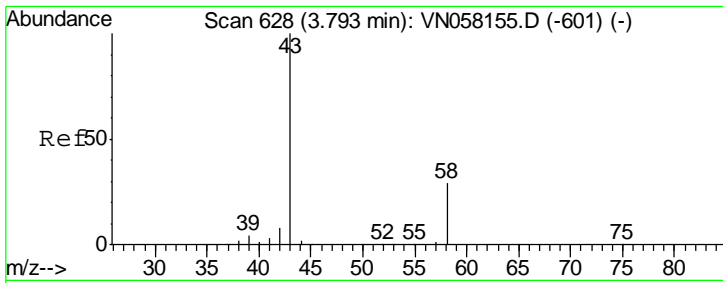
Tgt Ion: 64 Resp: 150  
 Ion Ratio Lower Upper  
 64 100  
 66 0.0 24.6 37.0#



#11  
 Tert butyl alcohol  
 Concen: 0.397 ug/l  
 RT: 4.74 min Scan# 924  
 Delta R.T. -0.01 min  
 Lab File: VN058320.D  
 Acq: 24 Sep 2019 2:15

Tgt Ion: 59 Resp: 294  
 Ion Ratio Lower Upper  
 59 100  
 57 0.0 8.6 13.0#

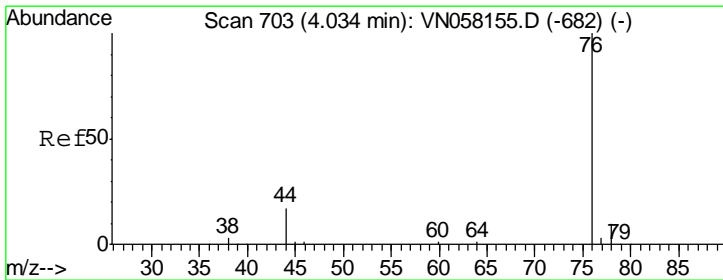
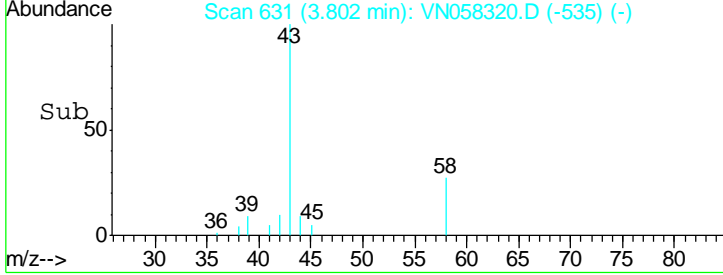
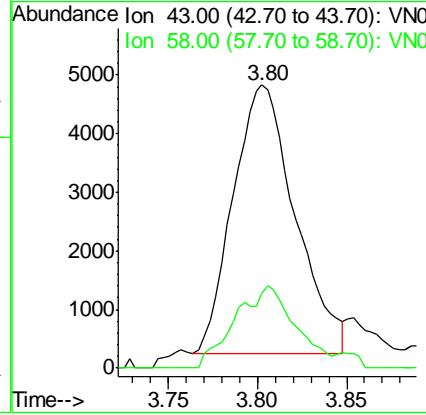
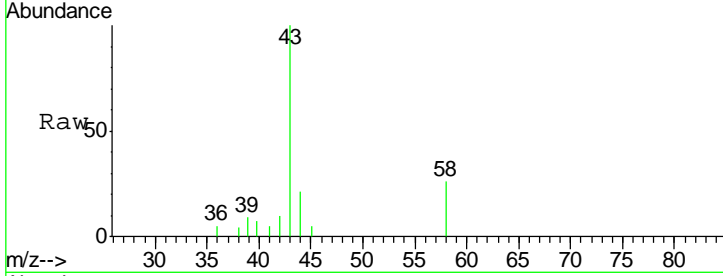




#16  
 Acetone  
 Concen: 5.264 ug/l  
 RT: 3.80 min Scan# 631  
 Delta R.T. 0.01 min  
 Lab File: VN058320.D  
 Acq: 24 Sep 2019 2:15

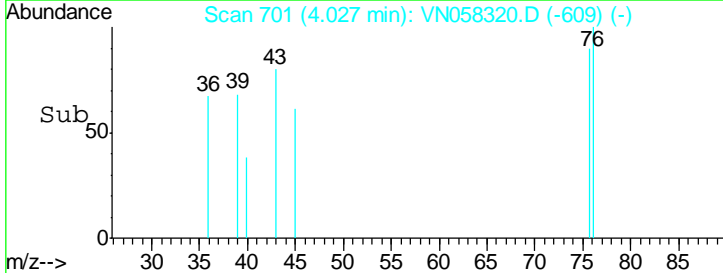
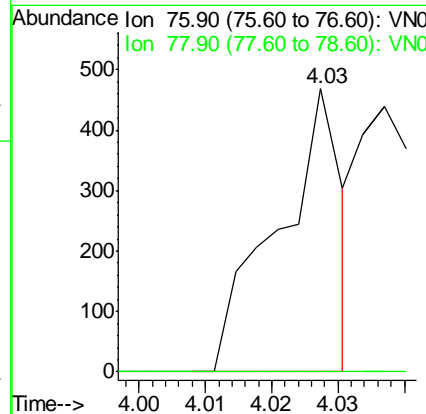
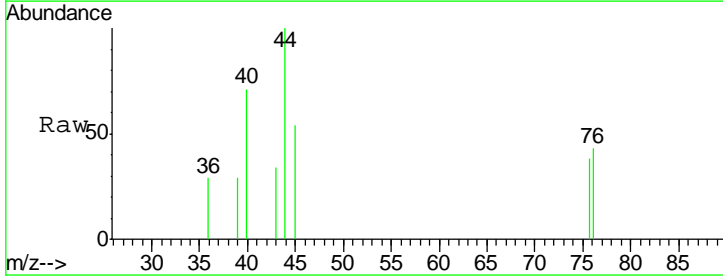
Instrument :  
 MSVOA\_N  
 ClientSampled :  
 WC-08-091919

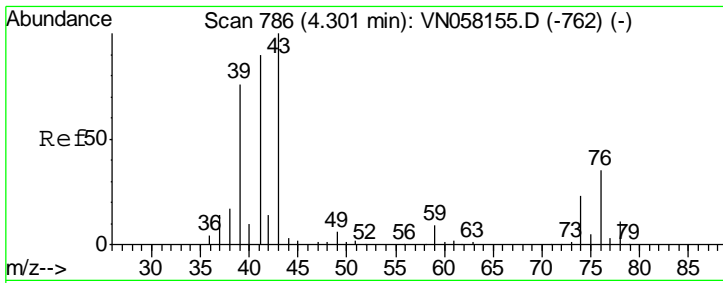
Tgt Ion	Resp	Lower	Upper
43	11114		
58	27.6	23.4	35.2



#17  
 Carbon Disulfide  
 Concen: 0.352 ug/l  
 RT: 4.03 min Scan# 701  
 Delta R.T. -0.01 min  
 Lab File: VN058320.D  
 Acq: 24 Sep 2019 2:15

Tgt Ion	Resp	Lower	Upper
76	313		
78	0.0	7.7	11.5#

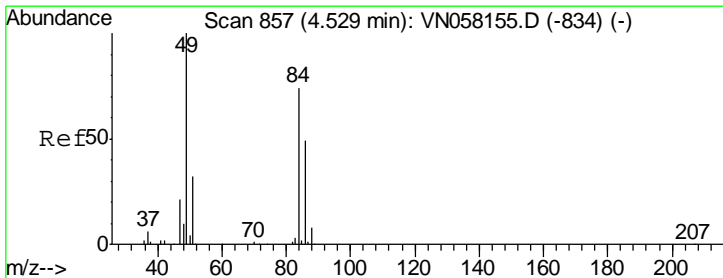
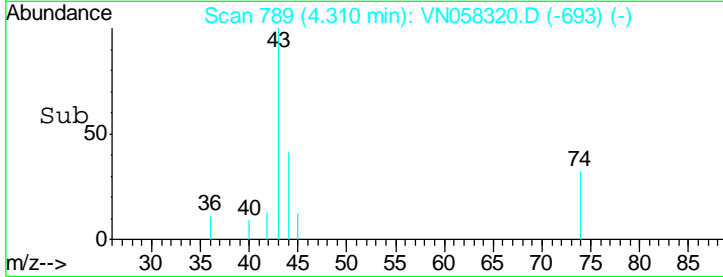
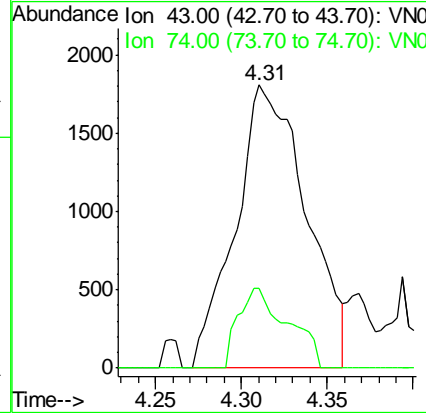
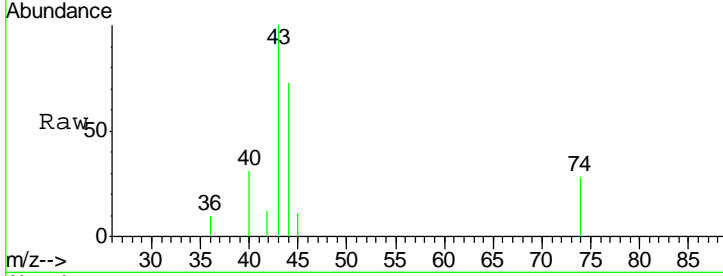




#18  
 Methyl Acetate  
 Concen: 0.933 ug/l  
 RT: 4.31 min Scan# 789  
 Delta R.T. 0.01 min  
 Lab File: VN058320.D  
 Acq: 24 Sep 2019 2:15

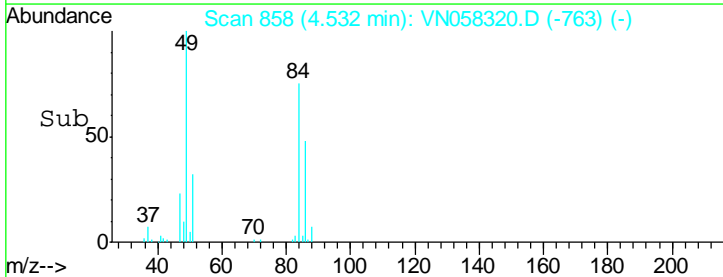
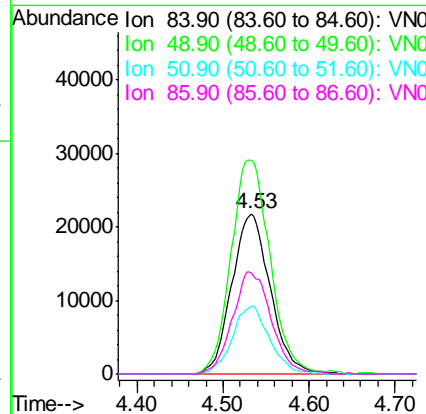
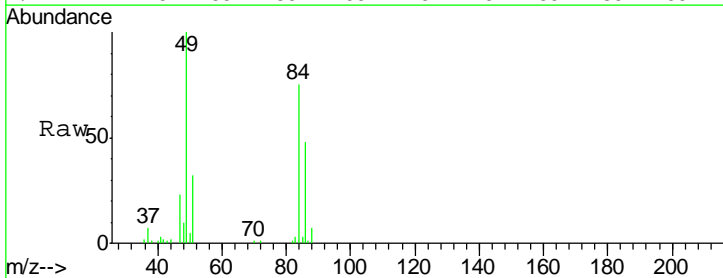
Instrument :  
 MSVOA\_N  
 ClientSampled :  
 WC-08-091919

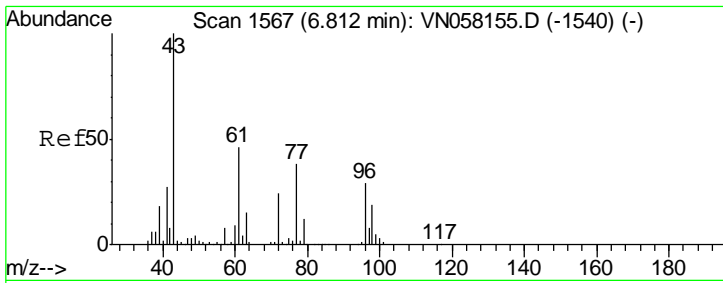
Tgt Ion: 43 Resp: 5183  
 Ion Ratio Lower Upper  
 43 100  
 74 19.6 18.0 27.0



#20  
 Methylene Chloride  
 Concen: 18.158 ug/l  
 RT: 4.53 min Scan# 858  
 Delta R.T. 0.00 min  
 Lab File: VN058320.D  
 Acq: 24 Sep 2019 2:15

Tgt Ion: 84 Resp: 67648  
 Ion Ratio Lower Upper  
 84 100  
 49 133.3 107.5 161.3  
 51 42.1 33.9 50.9  
 86 63.4 52.4 78.6

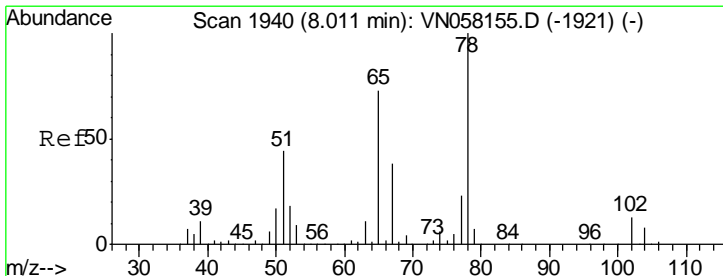
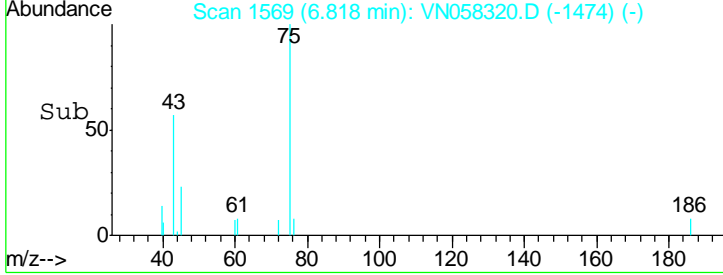
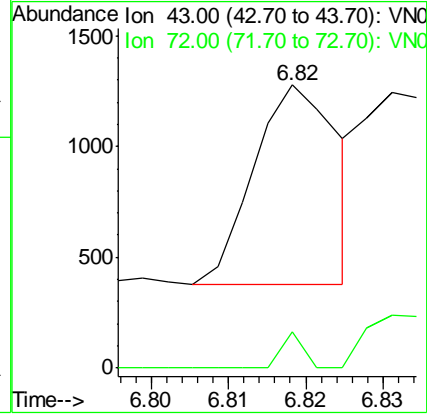
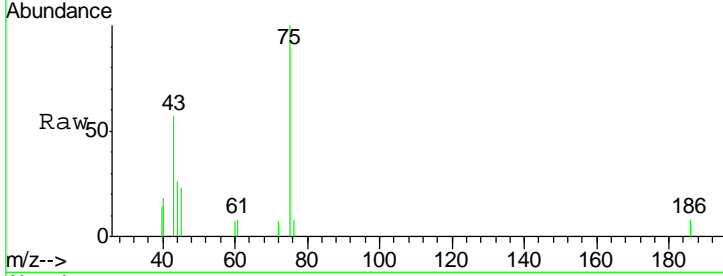




#25  
 2-Butanone  
 Concen: 0.238 ug/l  
 RT: 6.82 min Scan# 1569  
 Delta R.T. 0.01 min  
 Lab File: VN058320.D  
 Acq: 24 Sep 2019 2:15

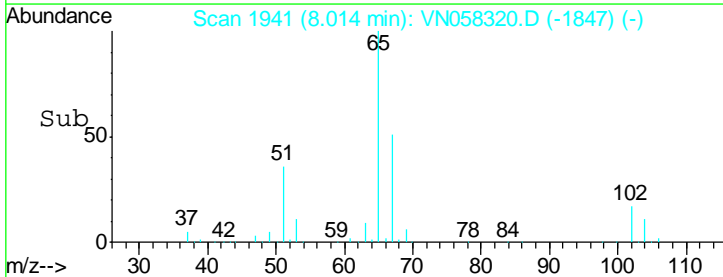
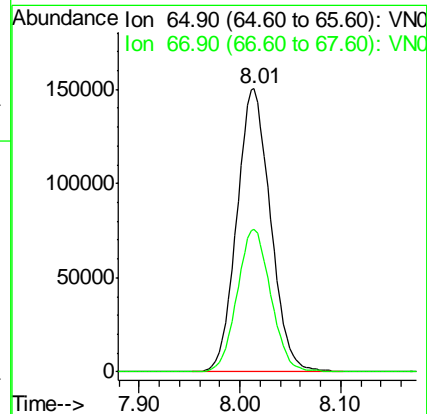
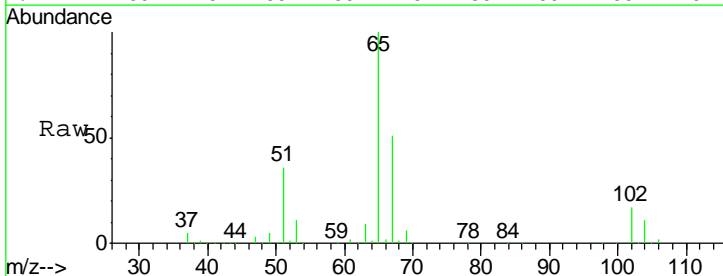
Instrument :  
 MSVOA\_N  
 ClientSampled :  
 WC-08-091919

Tgt Ion: 43 Resp: 684  
 Ion Ratio Lower Upper  
 43 100  
 72 18.1 19.5 29.3#

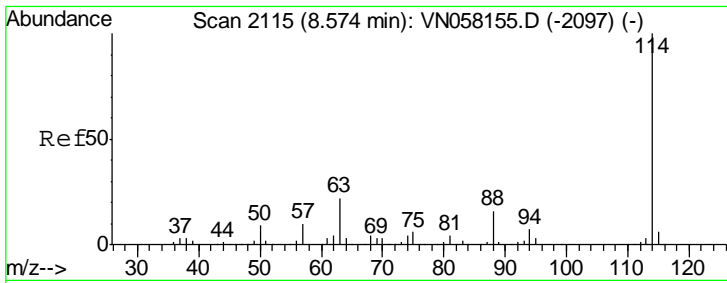


#33  
 1,2-Dichloroethane-d4  
 Concen: 55.985 ug/l  
 RT: 8.01 min Scan# 1941  
 Delta R.T. 0.00 min  
 Lab File: VN058320.D  
 Acq: 24 Sep 2019 2:15

Tgt Ion: 65 Resp: 348254  
 Ion Ratio Lower Upper  
 65 100  
 67 50.4 0.0 103.4



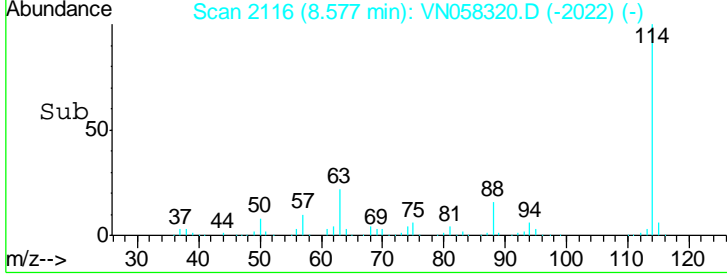
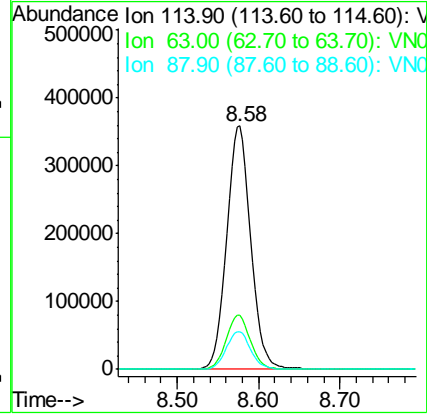
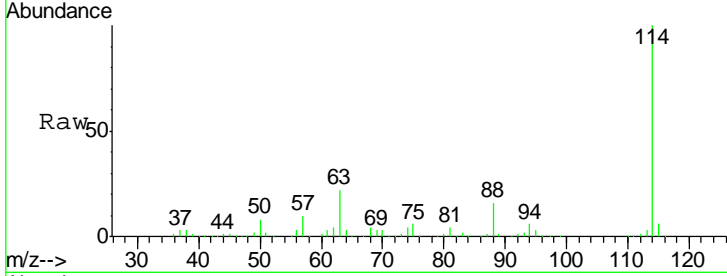




#34  
 1,4-Difluorobenzene  
 Concen: 50.000 ug/l  
 RT: 8.58 min Scan# 2116  
 Delta R.T. 0.00 min  
 Lab File: VN058320.D  
 Acq: 24 Sep 2019 2:15

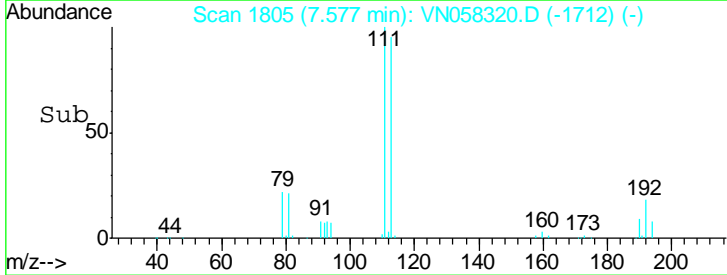
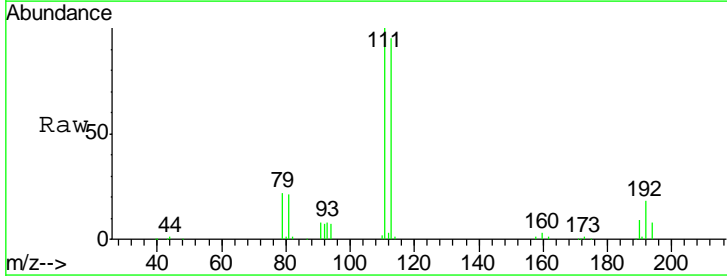
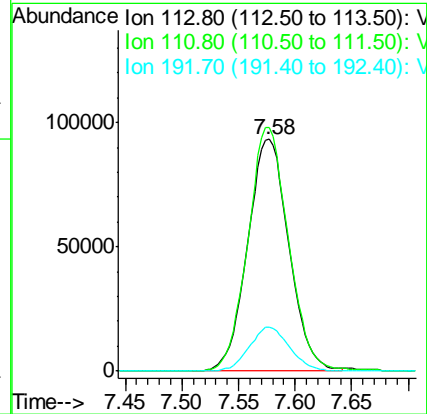
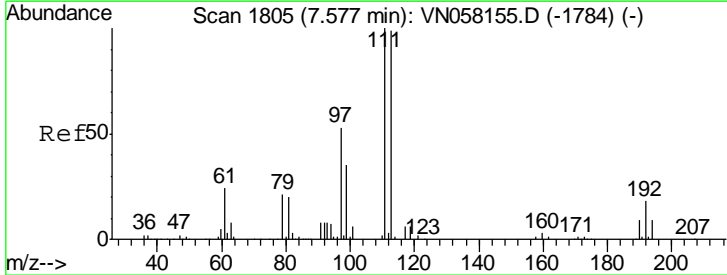
Instrument : MSVOA\_N  
 ClientSampled : VN058320.D  
 WC-08-091919

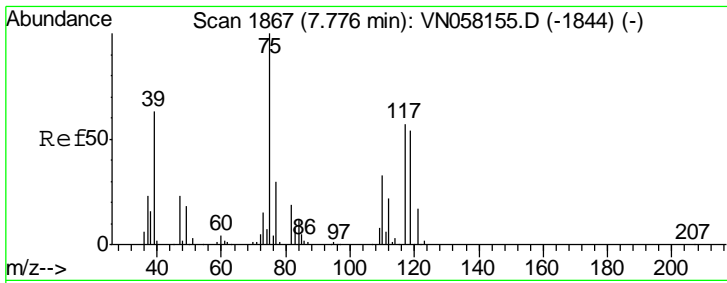
Tgt Ion	Resp	Lower	Upper
114	750091		
63	22.1	0.0	44.2
88	15.5	0.0	31.6



#35  
 Dibromofluoromethane  
 Concen: 51.989 ug/l  
 RT: 7.58 min Scan# 1805  
 Delta R.T. 0.00 min  
 Lab File: VN058320.D  
 Acq: 24 Sep 2019 2:15

Tgt Ion	Resp	Lower	Upper
113	237065		
111	103.6	81.8	122.6
192	18.5	14.5	21.7

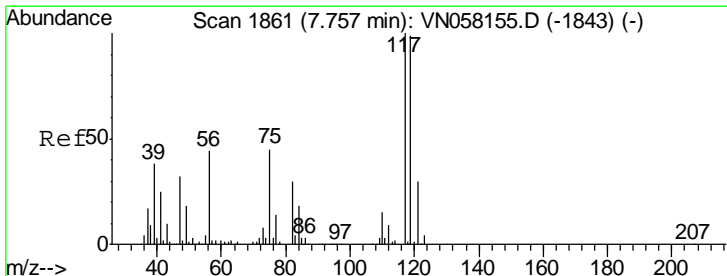
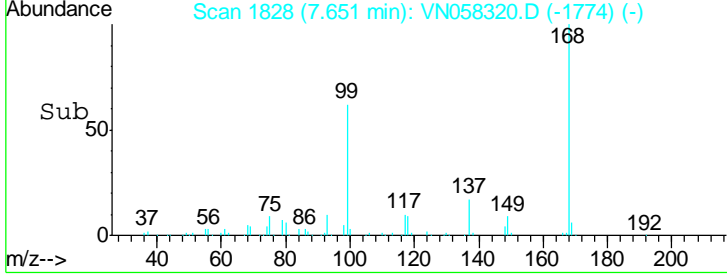
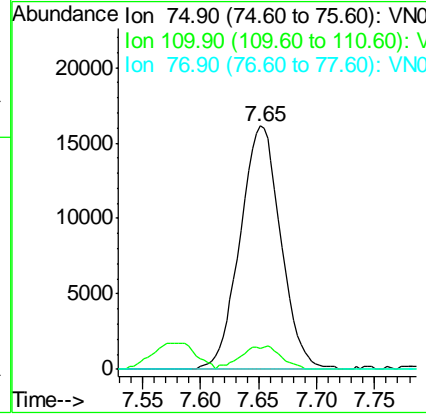
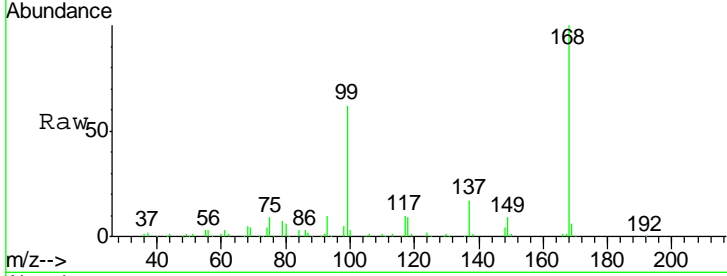




#36  
 1,1-Dichloropropene  
 Concen: 7.288 ug/l  
 RT: 7.65 min Scan# 1828  
 Delta R.T. -0.13 min  
 Lab File: VN058320.D  
 Acq: 24 Sep 2019 2:15

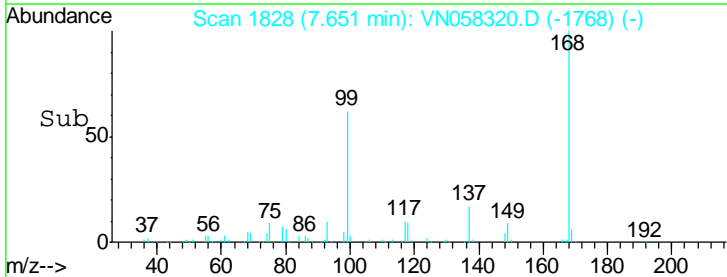
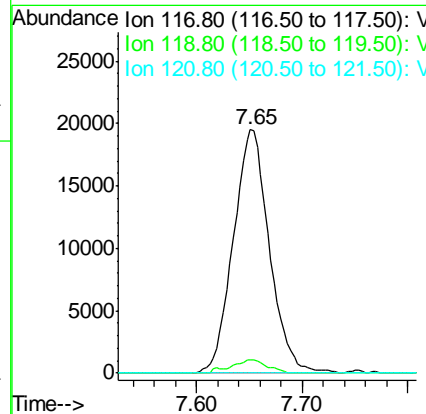
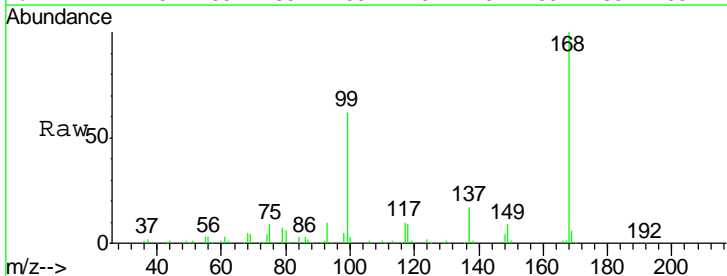
**Instrument :**  
 MSVOA\_N  
**ClientSampled :**  
 WC-08-091919

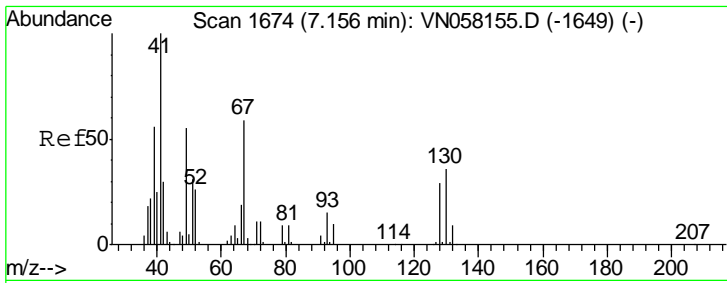
Tgt Ion	Resp	Lower	Upper
75	100		
110	5.0	16.6	49.7#
77	0.0	24.3	36.5#



#38  
 Carbon Tetrachloride  
 Concen: 8.506 ug/l  
 RT: 7.65 min Scan# 1828  
 Delta R.T. -0.11 min  
 Lab File: VN058320.D  
 Acq: 24 Sep 2019 2:15

Tgt Ion	Resp	Lower	Upper
117	100		
119	5.4	78.6	117.8#
121	0.0	24.1	36.1#

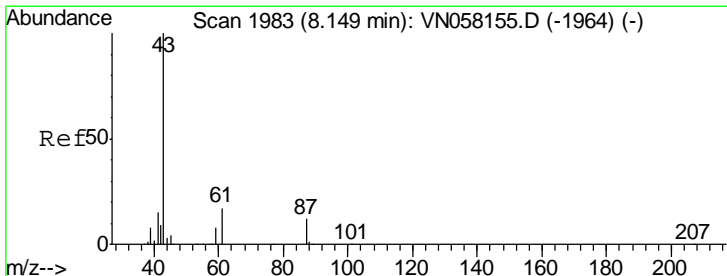
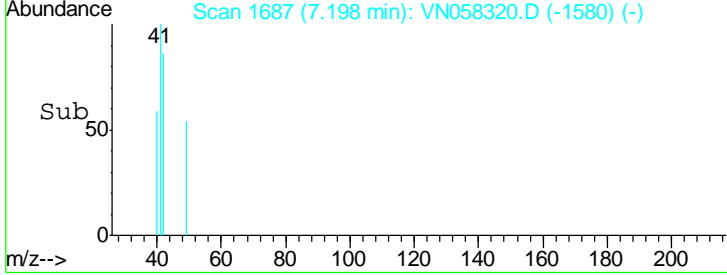
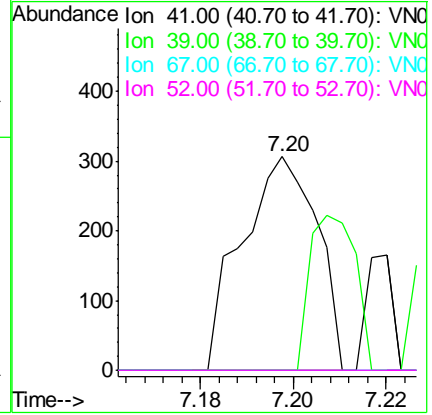
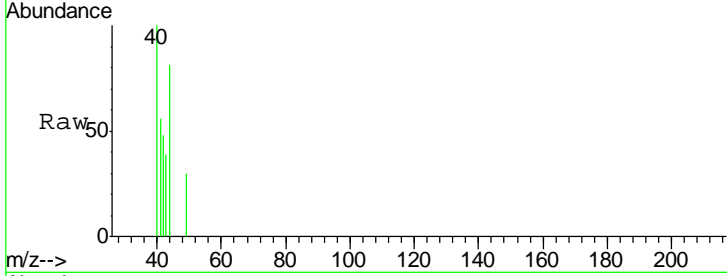




#41  
 Methacrylonitrile  
 Concen: 1.031 ug/l  
 RT: 7.20 min Scan# 1687  
 Delta R.T. 0.04 min  
 Lab File: VN058320.D  
 Acq: 24 Sep 2019 2:15

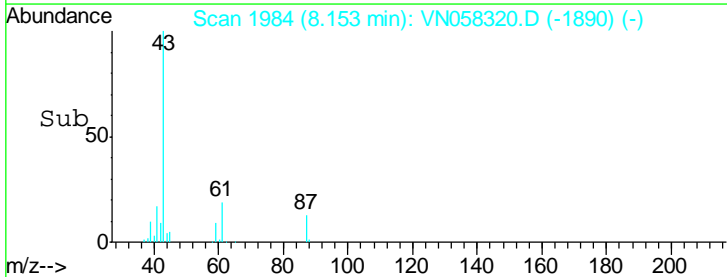
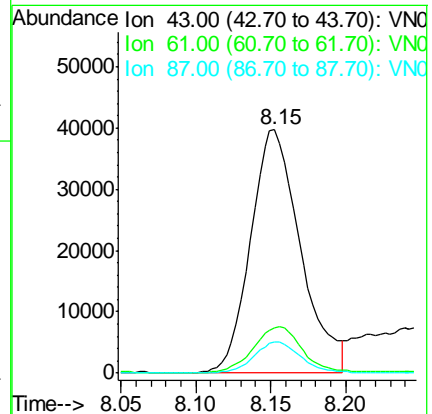
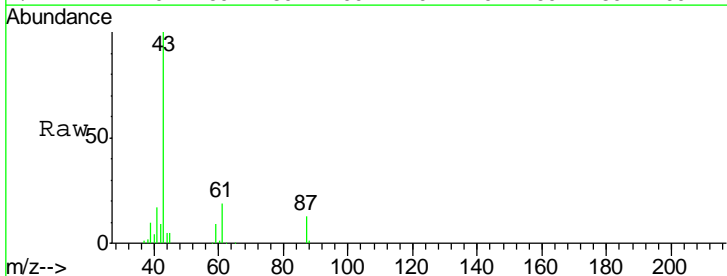
Instrument : MSVOA\_N  
 ClientSampled : VN058320.D  
 WC-08-091919

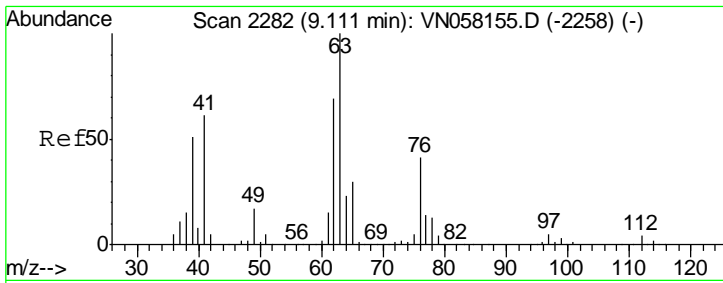
Tgt Ion	Resp	Lower	Upper
41	100		
39	44.5	0.0	0.0#
67	0.0	0.0	0.0
52	0.0	0.0	0.0



#43  
 Isopropyl Acetate  
 Concen: 8.815 ug/l  
 RT: 8.15 min Scan# 1984  
 Delta R.T. 0.00 min  
 Lab File: VN058320.D  
 Acq: 24 Sep 2019 2:15

Tgt Ion	Resp	Lower	Upper
43	100		
61	18.7	19.7	29.5#
87	11.8	9.4	14.2

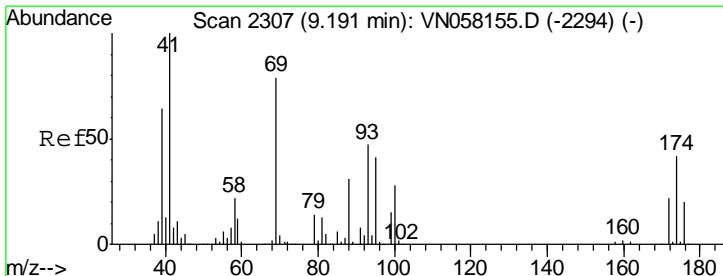
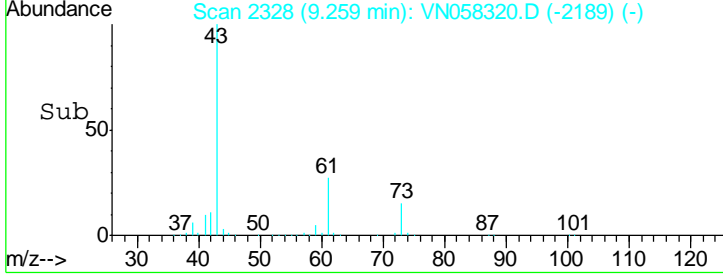
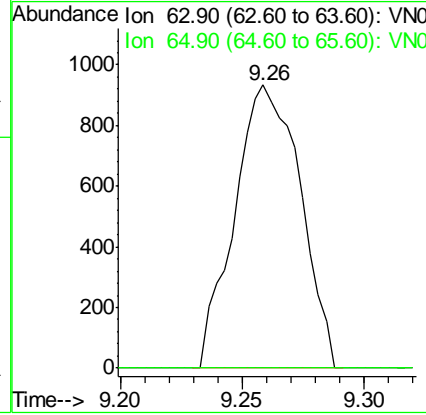
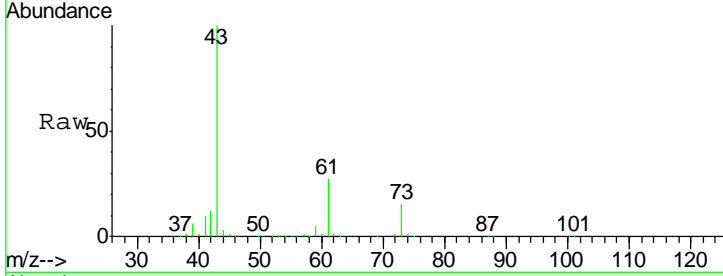




#45  
 1,2-Dichloropropane  
 Concen: 0.353 ug/l  
 RT: 9.26 min Scan# 2328  
 Delta R.T. 0.15 min  
 Lab File: VN058320.D  
 Acq: 24 Sep 2019 2:15

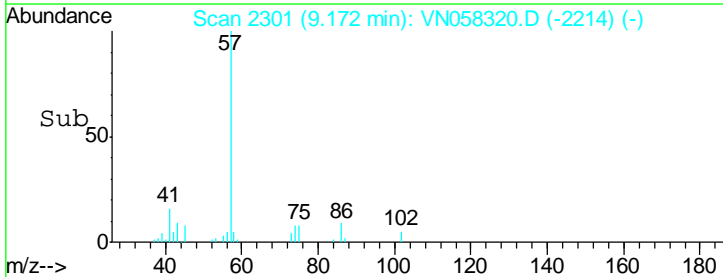
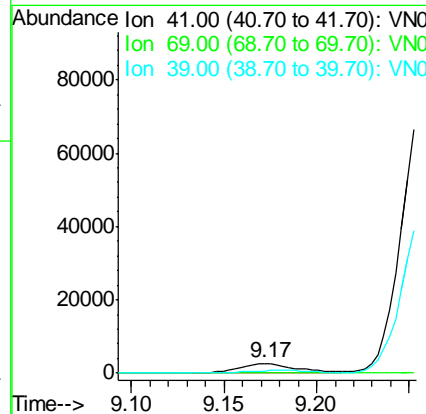
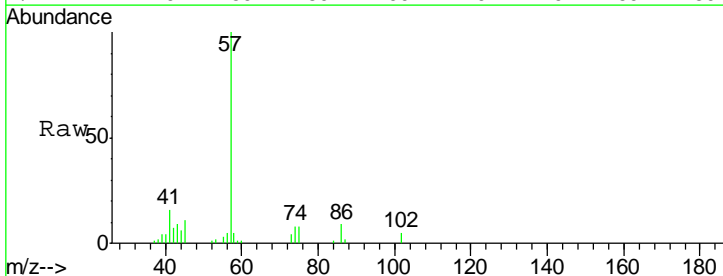
**Instrument :**  
 MSVOA\_N  
**ClientSampled :**  
 WC-08-091919

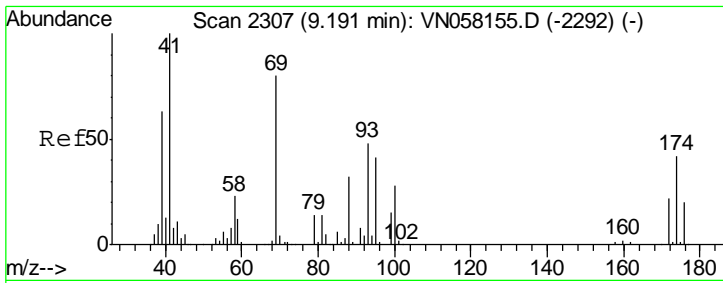
Tgt Ion: 63 Resp: 1742  
 Ion Ratio Lower Upper  
 63 100  
 65 0.0 23.8 35.6#



#48  
 Methyl methacrylate  
 Concen: 1.189 ug/l  
 RT: 9.17 min Scan# 2301  
 Delta R.T. -0.02 min  
 Lab File: VN058320.D  
 Acq: 24 Sep 2019 2:15

Tgt Ion: 41 Resp: 5660  
 Ion Ratio Lower Upper  
 41 100  
 69 1.7 62.5 93.7#  
 39 0.0 52.3 78.5#

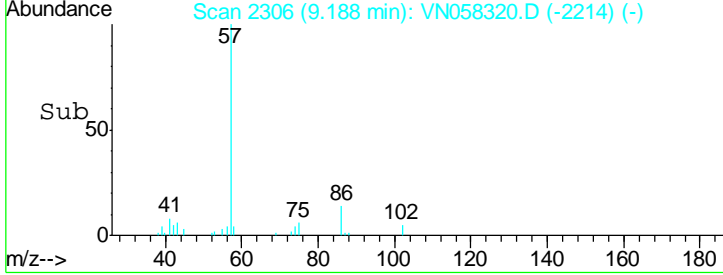
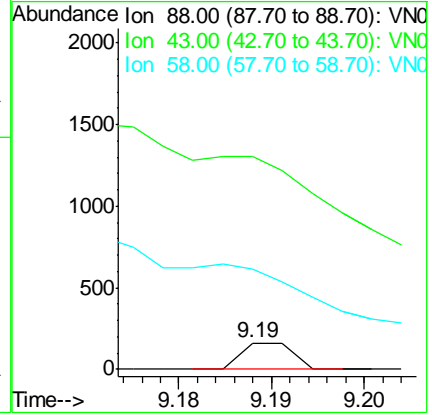
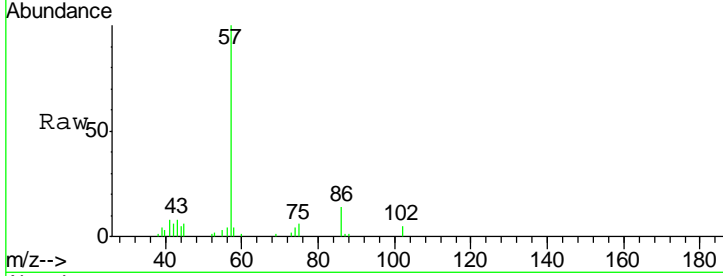




#49  
 1,4-Dioxane  
 Concen: 0.806 ug/l  
 RT: 9.19 min Scan# 2306  
 Delta R.T. -0.00 min  
 Lab File: VN058320.D  
 Acq: 24 Sep 2019 2:15

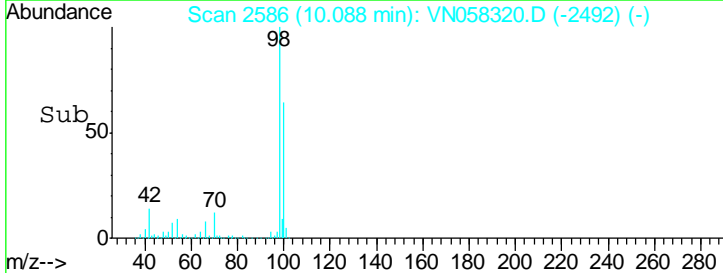
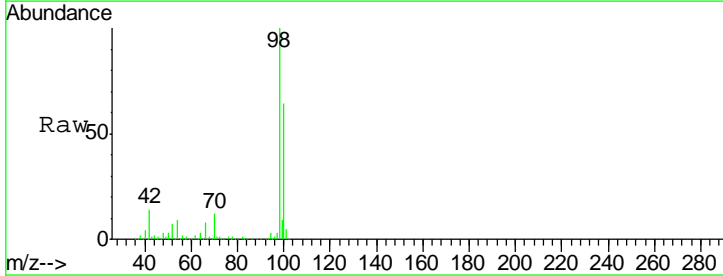
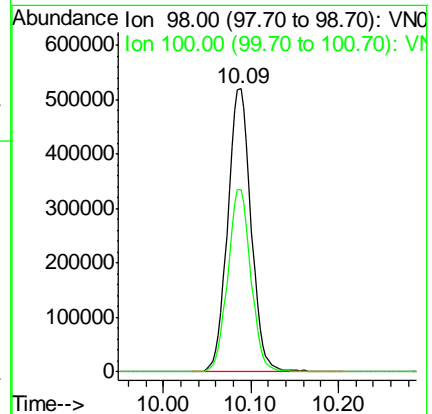
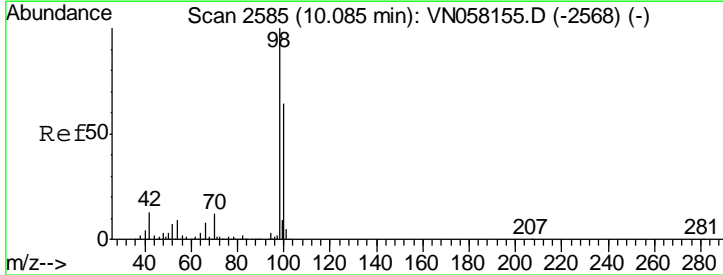
Instrument : MSVOA\_N  
 ClientSampled : VN058320.D  
 WC-08-091919

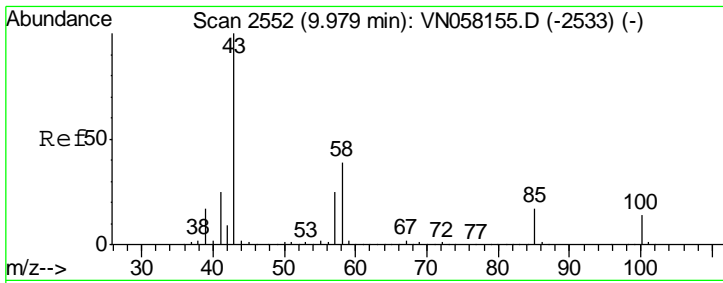
Tgt Ion	Resp	Lower	Upper
88	100		
43	0.0	27.8	41.8#
58	2838.1	55.0	82.4#



#50  
 Toluene-d8  
 Concen: 54.326 ug/l  
 RT: 10.09 min Scan# 2586  
 Delta R.T. 0.00 min  
 Lab File: VN058320.D  
 Acq: 24 Sep 2019 2:15

Tgt Ion	Resp	Lower	Upper
98	100		
100	63.7	51.1	76.7

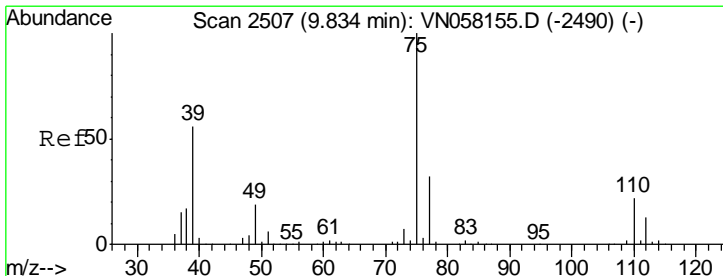
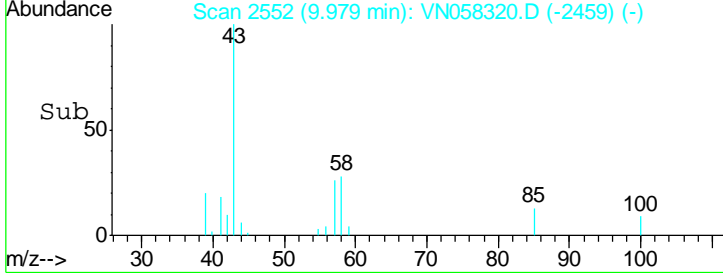
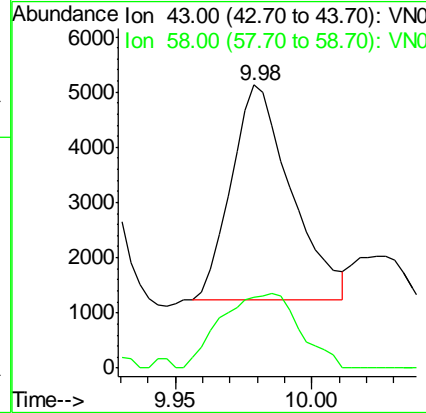
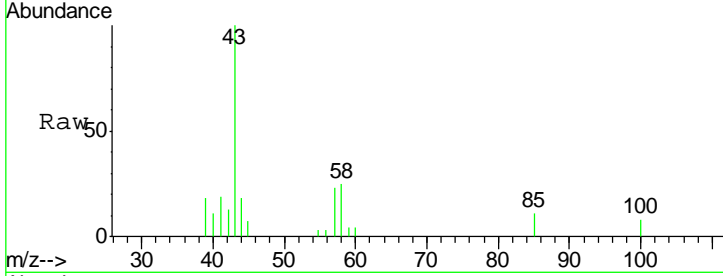




#51  
 4-Methyl-2-Pentanone  
 Concen: 1.063 ug/l  
 RT: 9.98 min Scan# 2552  
 Delta R.T. 0.00 min  
 Lab File: VN058320.D  
 Acq: 24 Sep 2019 2:15

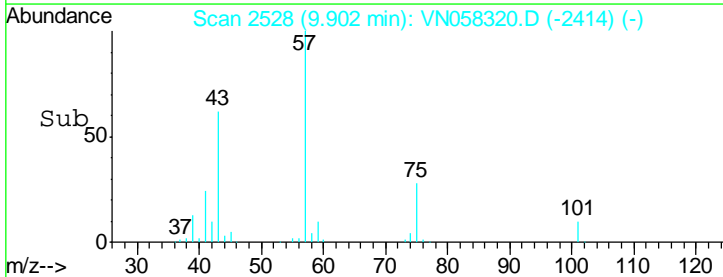
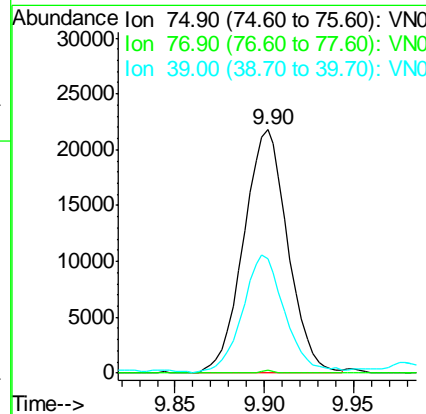
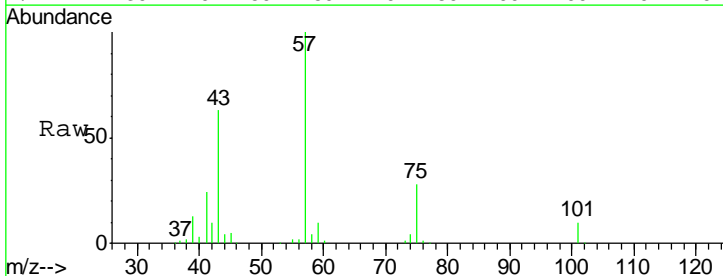
Instrument : MSVOA\_N  
 ClientSampleID : VN058320.D  
 WC-08-091919

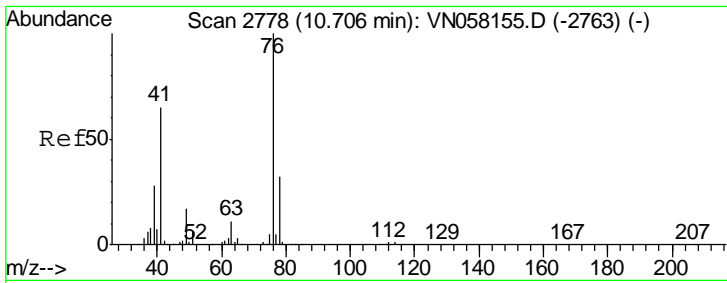
Tgt Ion	Resp	Lower	Upper
43	100		
58	45.6	30.2	45.4#



#54  
 cis-1,3-Dichloropropene  
 Concen: 5.318 ug/l  
 RT: 9.90 min Scan# 2528  
 Delta R.T. 0.07 min  
 Lab File: VN058320.D  
 Acq: 24 Sep 2019 2:15

Tgt Ion	Resp	Lower	Upper
75	100		
77	1.1	25.4	38.0#
39	46.8	45.0	67.6

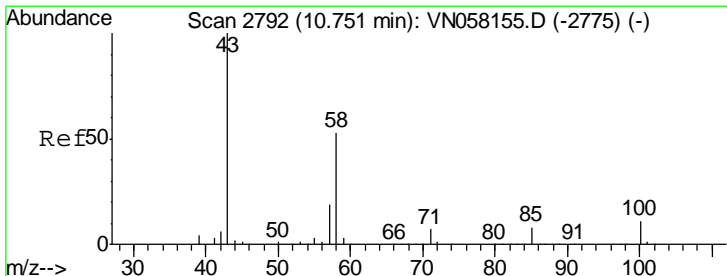
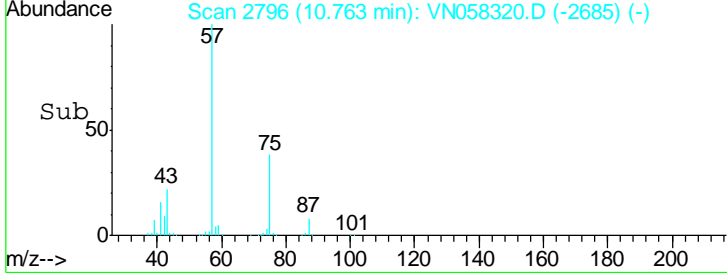
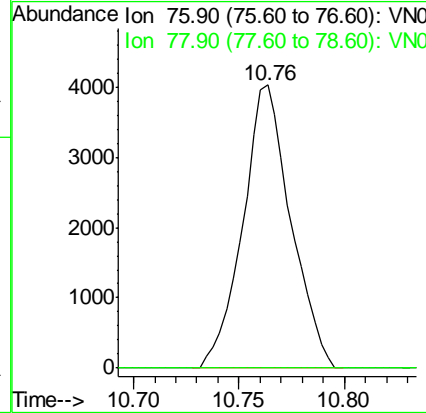
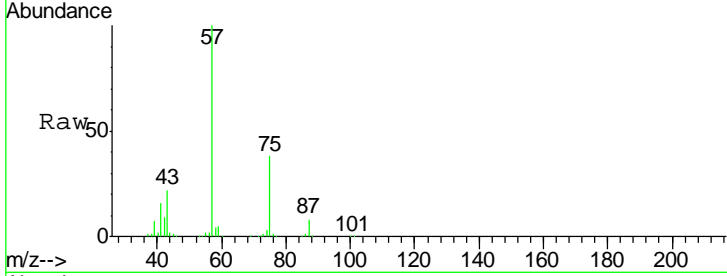




#57  
 1,3-Dichloropropane  
 Concen: 0.806 ug/l  
 RT: 10.76 min Scan# 2796  
 Delta R.T. 0.06 min  
 Lab File: VN058320.D  
 Acq: 24 Sep 2019 2:15

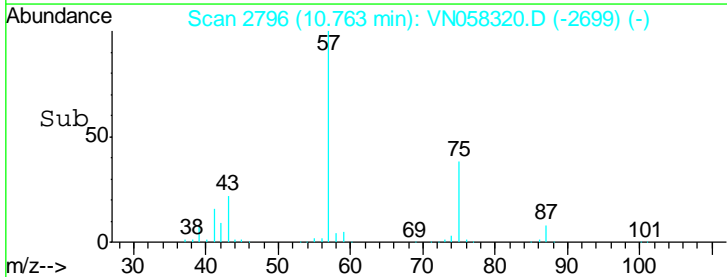
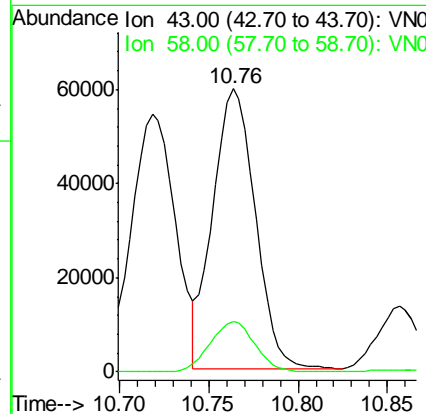
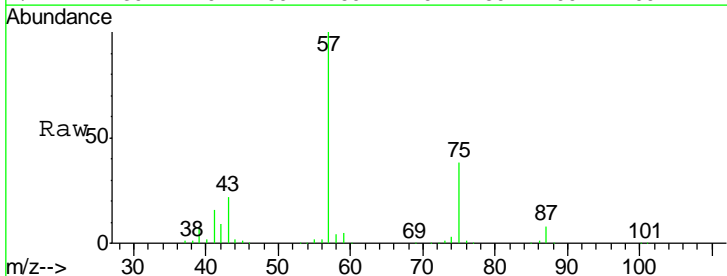
Instrument : MSVOA\_N  
 ClientSampled : VN058320.D  
 WC-08-091919

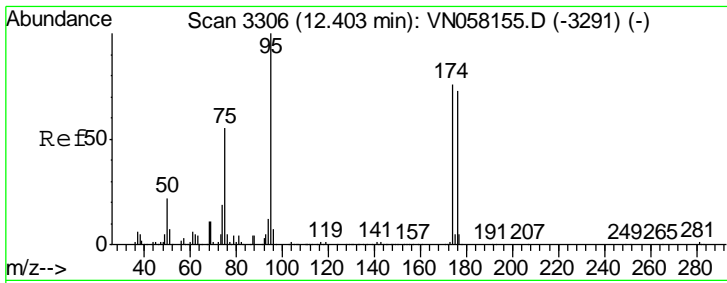
Tgt Ion: 76 Resp: 6364  
 Ion Ratio Lower Upper  
 76 100  
 78 0.0 25.4 38.0#



#59  
 2-Hexanone  
 Concen: 23.788 ug/l  
 RT: 10.76 min Scan# 2796  
 Delta R.T. 0.01 min  
 Lab File: VN058320.D  
 Acq: 24 Sep 2019 2:15

Tgt Ion: 43 Resp: 98384  
 Ion Ratio Lower Upper  
 43 100  
 58 19.1 26.0 78.0#

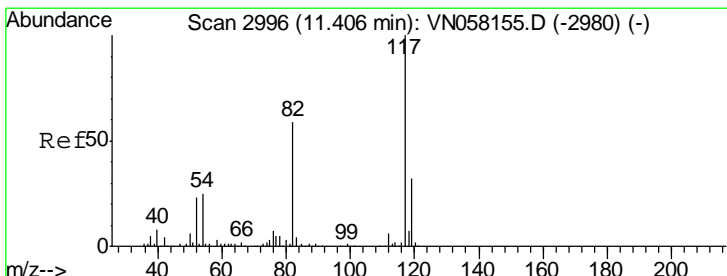
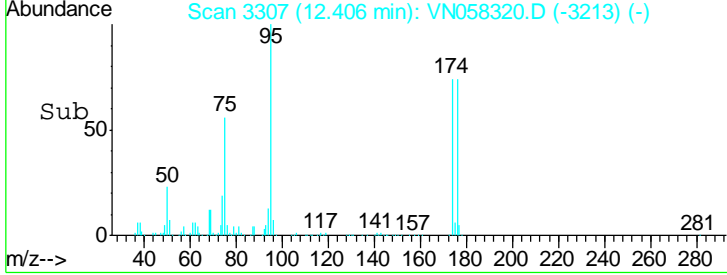
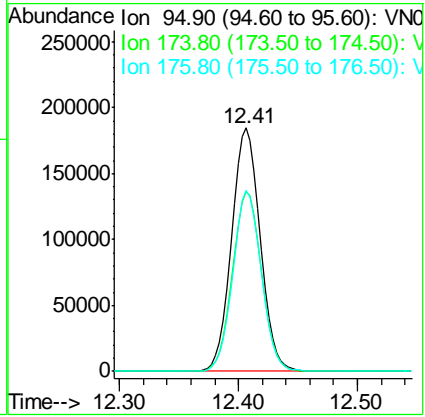
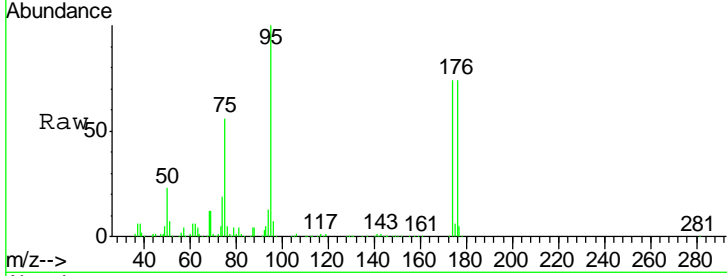




#62  
 4-Bromofluorobenzene  
 Concen: 46.597 ug/l  
 RT: 12.41 min Scan# 3307  
 Delta R.T. 0.00 min  
 Lab File: VN058320.D  
 Acq: 24 Sep 2019 2:15

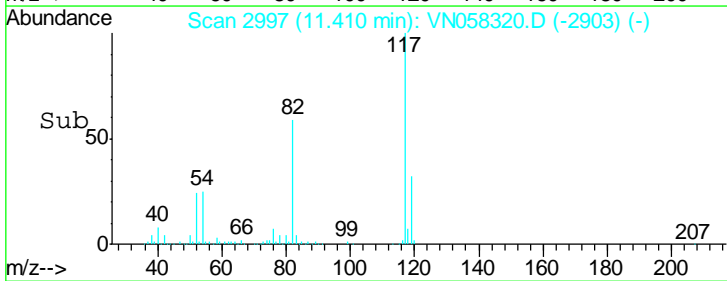
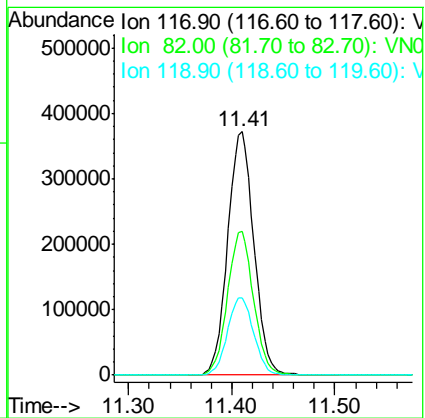
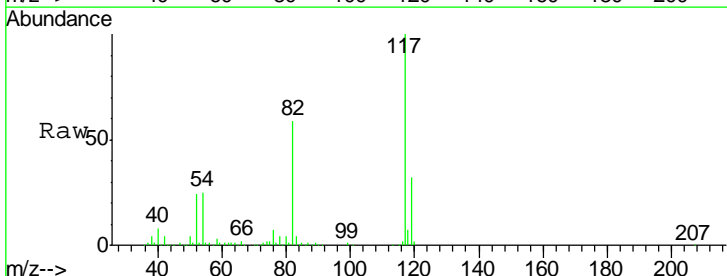
Instrument : MSVOA\_N  
 ClientSampled : WC-08-091919

Tgt Ion	Resp	Lower	Upper
95	307519		
174	75.0	0.0	152.2
176	73.7	0.0	148.0

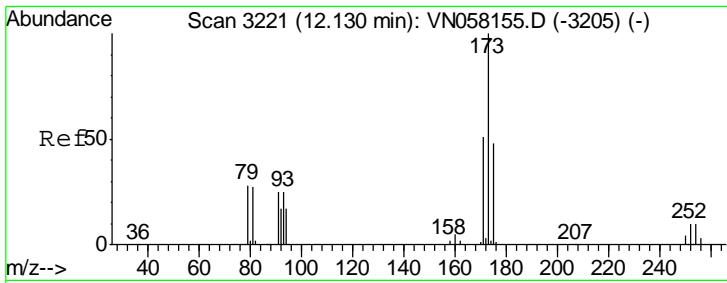


#63  
 Chlorobenzene-d5  
 Concen: 50.000 ug/l  
 RT: 11.41 min Scan# 2997  
 Delta R.T. 0.00 min  
 Lab File: VN058320.D  
 Acq: 24 Sep 2019 2:15

Tgt Ion	Resp	Lower	Upper
117	658813		
82	58.8	46.9	70.3
119	31.9	25.3	37.9



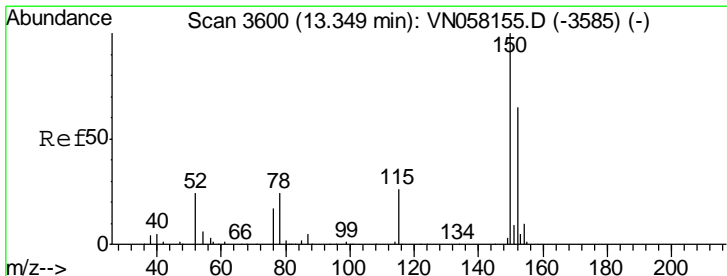
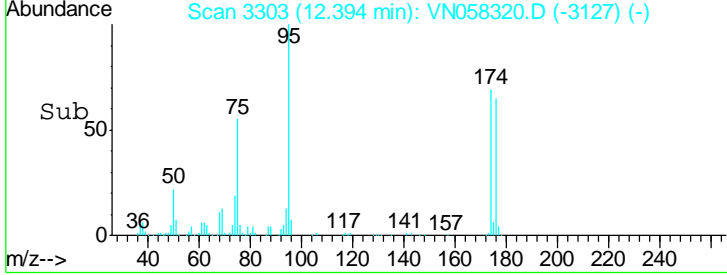
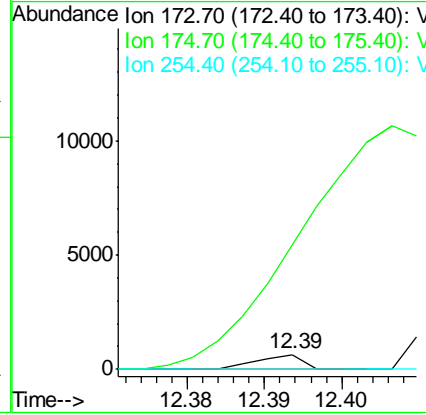
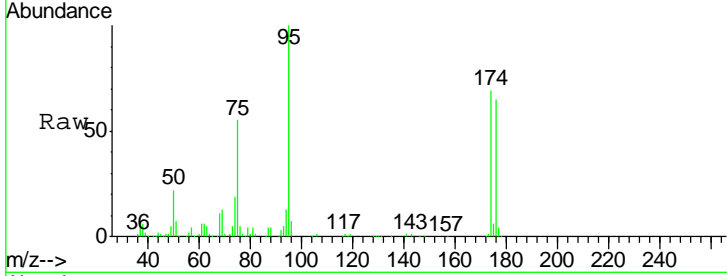




#71  
 Bromoform  
 Concen: 3.671 ug/l  
 RT: 12.39 min Scan# 3303  
 Delta R.T. 0.26 min  
 Lab File: VN058320.D  
 Acq: 24 Sep 2019 2:15

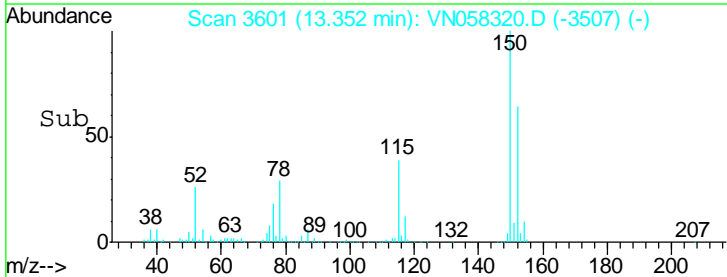
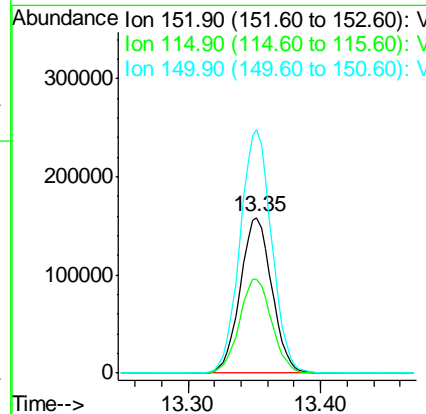
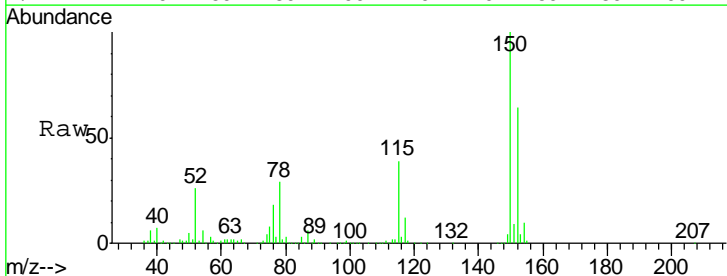
Instrument : MSVOA\_N  
 ClientSampled : WC-08-091919

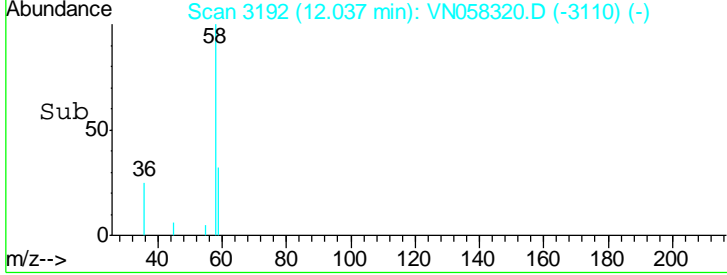
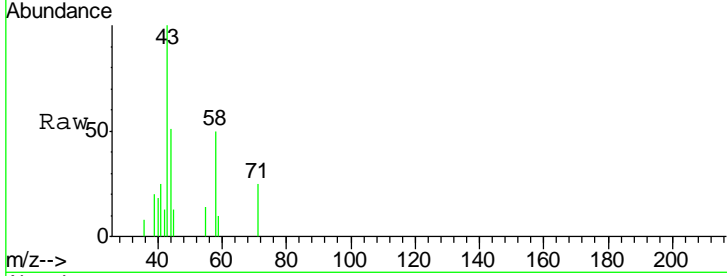
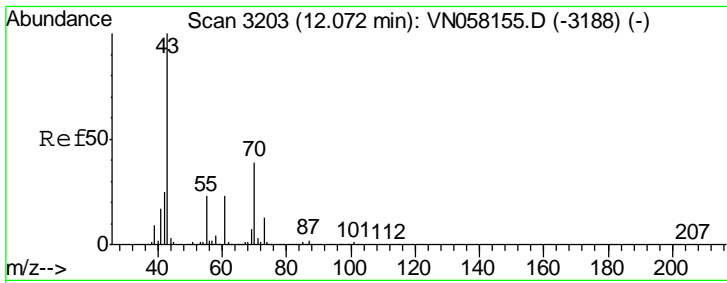
Tgt Ion	Resp	Lower	Upper
173	100		
175	0.0	24.2	72.6#
254	0.0	0.1	0.1#



#72  
 1,4-Dichlorobenzene-d4  
 Concen: 50.000 ug/l  
 RT: 13.35 min Scan# 3601  
 Delta R.T. 0.00 min  
 Lab File: VN058320.D  
 Acq: 24 Sep 2019 2:15

Tgt Ion	Resp	Lower	Upper
152	100		
115	61.6	30.1	90.3
150	155.9	0.0	346.4

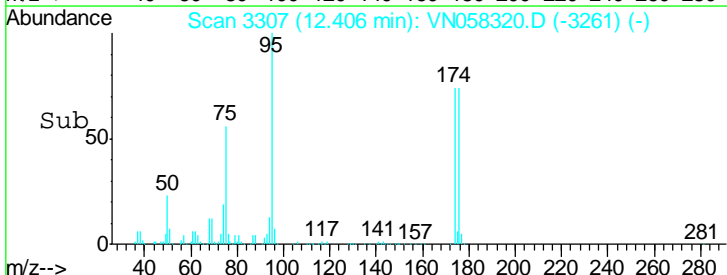
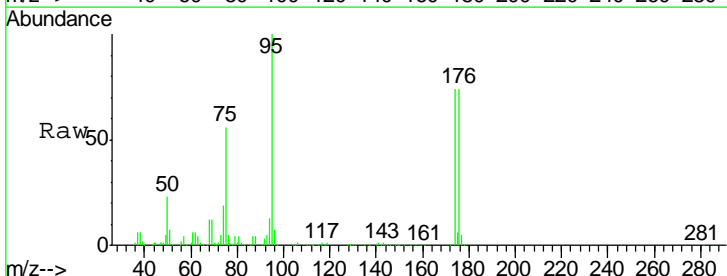
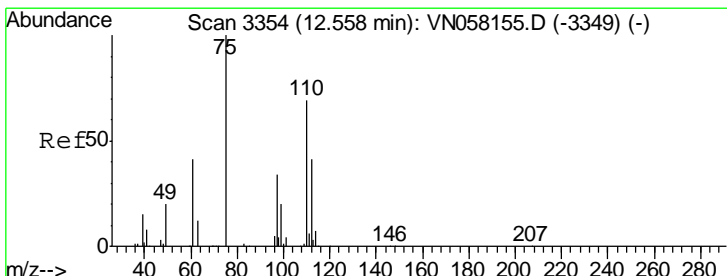
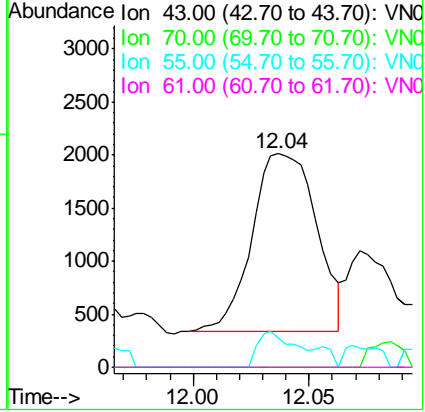




#74  
 N-amyl acetate  
 Concen: 0.472 ug/l  
 RT: 12.04 min Scan# 3192  
 Delta R.T. -0.04 min  
 Lab File: VN058320.D  
 Acq: 24 Sep 2019 2:15

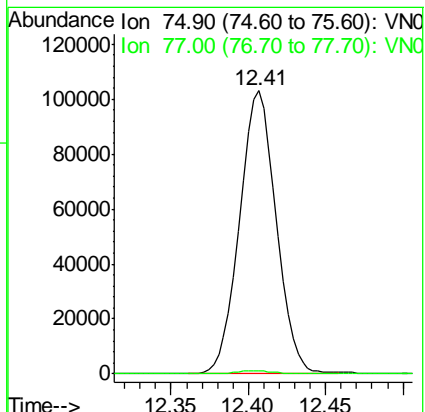
Instrument : MSVOA\_N  
 ClientSampled : VN058320.D  
 WC-08-091919

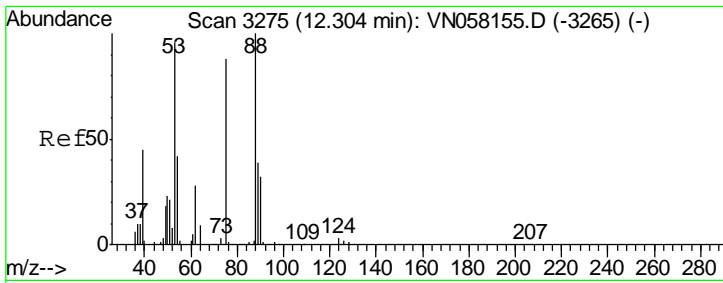
Tgt Ion	Resp	Lower	Upper
43	3255		
70	0.0	31.0	46.6#
55	11.4	18.5	27.7#
61	0.0	18.2	27.2#



#76  
 1,2,3-Trichloropropane  
 Concen: 36.152 ug/l  
 RT: 12.41 min Scan# 3307  
 Delta R.T. -0.15 min  
 Lab File: VN058320.D  
 Acq: 24 Sep 2019 2:15

Tgt Ion	Resp	Lower	Upper
75	170228		
77	1.1	0.0	0.0#

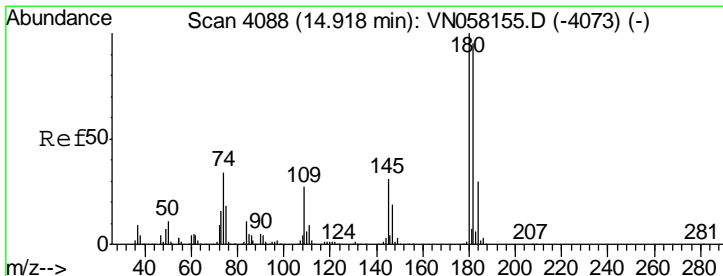
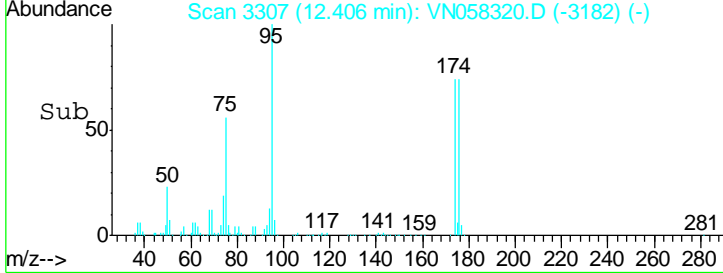
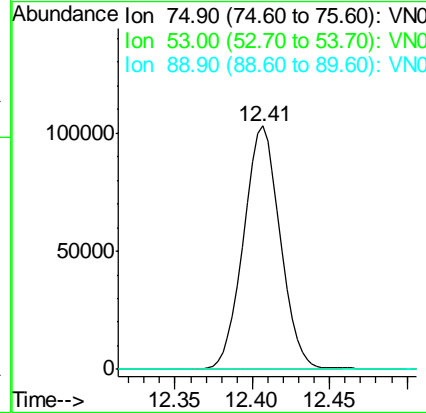
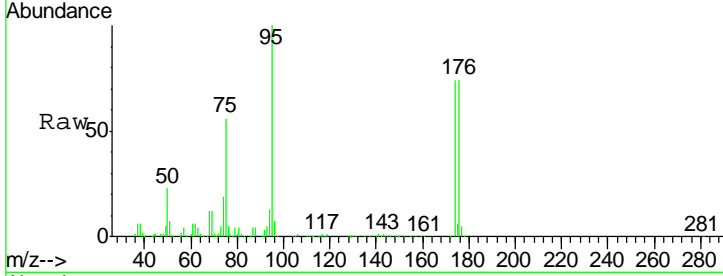




#81  
 trans-1,4-Dichloro-2-butene  
 Concen: 100.941 ug/l  
 RT: 12.41 min Scan# 3307  
 Delta R.T. 0.10 min  
 Lab File: VN058320.D  
 Acq: 24 Sep 2019 2:15

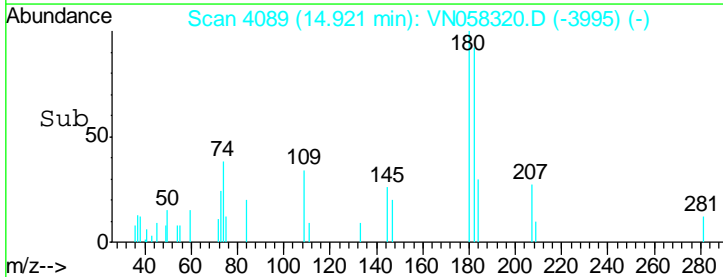
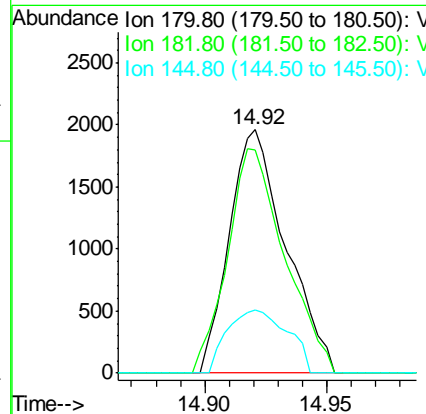
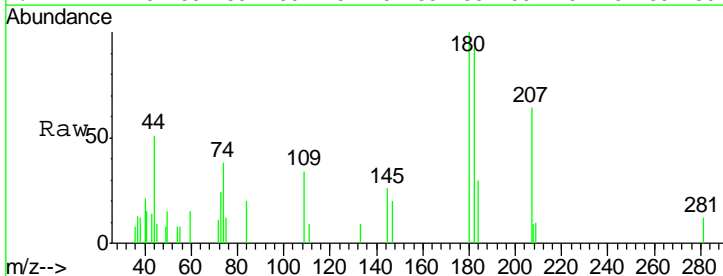
Instrument : MSVOA\_N  
 ClientSampled : WC-08-091919

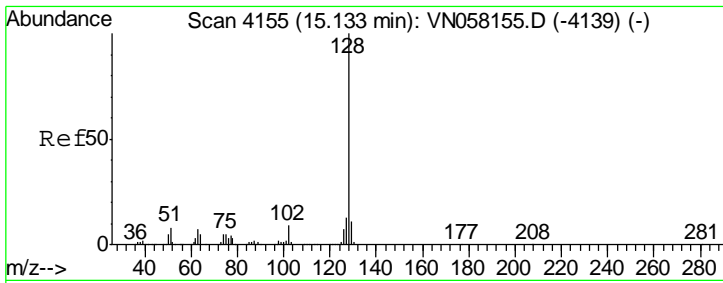
Tgt Ion	Resp	Lower	Upper
75	100		
53	0.0	90.1	135.1#
89	0.0	36.2	54.2#



#93  
 1,2,4-Trichlorobenzene  
 Concen: 0.650 ug/l  
 RT: 14.92 min Scan# 4089  
 Delta R.T. 0.00 min  
 Lab File: VN058320.D  
 Acq: 24 Sep 2019 2:15

Tgt Ion	Resp	Lower	Upper
180	100		
182	93.2	47.8	143.3
145	27.7	15.4	46.4

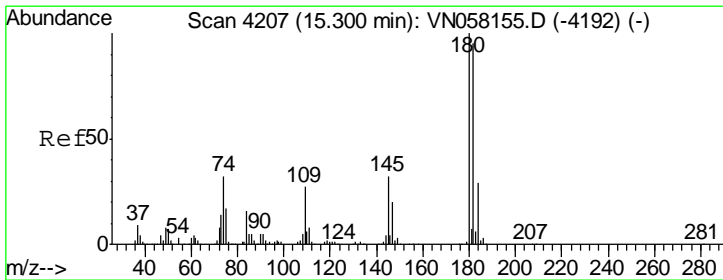
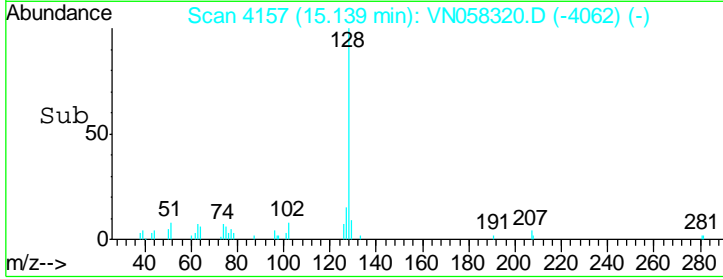
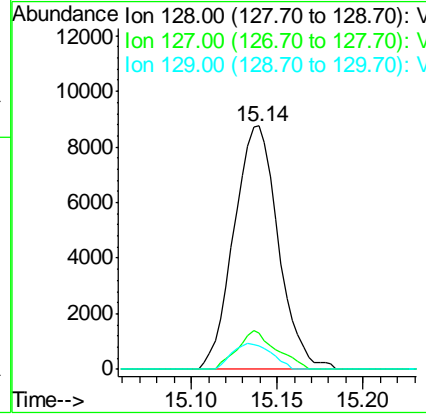
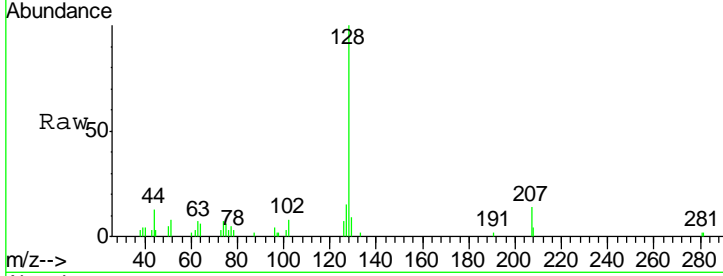




#95  
 Naphthalene  
 Concen: 1.248 ug/l  
 RT: 15.14 min Scan# 4157  
 Delta R.T. 0.01 min  
 Lab File: VN058320.D  
 Acq: 24 Sep 2019 2:15

Instrument :  
 MSVOA\_N  
 ClientSampled :  
 WC-08-091919

Tgt Ion	Resp	Lower	Upper
128	15687		
127	14.0	10.2	15.2
129	9.4	8.6	12.8



#96  
 1,2,3-Trichlorobenzene  
 Concen: 0.825 ug/l  
 RT: 15.30 min Scan# 4207  
 Delta R.T. 0.00 min  
 Lab File: VN058320.D  
 Acq: 24 Sep 2019 2:15

Tgt Ion	Resp	Lower	Upper
180	3782		
182	92.8	47.4	142.2
145	35.2	16.1	48.2

