

Data Path : Z:\VOASRV\HPCHEM1\MSVOA N\DATA\VN092520\  
 Data File : VN063691.D  
 Acq On : 25 Sep 2020 20:18  
 Operator : JC/MD  
 Sample : L4133-01  
 Misc : 5.00mL/MSVOA N/WATER  
 ALS Vial : 19 Sample Multiplier: 1

Instrument :  
 MSVOA\_N  
 ClientSampleId :  
 MW1S

Integration Parameters: RTEINT.P

Integrator: RTE  
 Smoothing : ON Filtering: 5  
 Sampling : 1 Min Area: 3 % of largest Peak  
 Start Thrs: 0.2 Max Peaks: 100  
 Stop Thrs : 0 Peak Location: TOP

If leading or trailing edge < 100 prefer < Baseline drop else tangent >  
 Peak separation: 5

Method : Z:\VOASRV\HPCHEM1\MSVOA\_N\METHODS\82N091620W.M  
 Title : SW846 8260

Signal : TIC

peak #	R.T. min	first scan	max scan	last scan	PK TY	peak height	corr. area	corr. % max.	% of total
1	1.972	63	72	82	rBV	26338	36856	1.74%	0.370%
2	2.422	200	212	220	rBV3	15344	29104	1.38%	0.292%
3	4.016	692	708	722	rBV2	14935	41824	1.98%	0.419%
4	6.782	1547	1568	1590	rBV4	74281	226534	10.71%	2.271%
5	7.550	1789	1807	1819	rBV2	173474	442353	20.92%	4.435%
6	7.627	1819	1831	1853	rVB2	281031	684563	32.37%	6.863%
7	7.991	1927	1944	1965	rBV2	201403	480638	22.73%	4.819%
8	8.550	2103	2118	2141	rBV	466306	977080	46.20%	9.796%
9	8.804	2182	2197	2213	rVB3	49518	100320	4.74%	1.006%
10	10.061	2573	2588	2603	rBV	756943	1381940	65.34%	13.855%
11	10.605	2741	2757	2783	rBV	1155696	2114911	100.00%	21.203%
12	11.380	2984	2998	3016	rBV	752138	1327652	62.78%	13.311%
13	12.376	3292	3308	3329	rBV	594139	997655	47.17%	10.002%
14	13.318	3584	3601	3619	rBV	668710	1132947	53.57%	11.359%

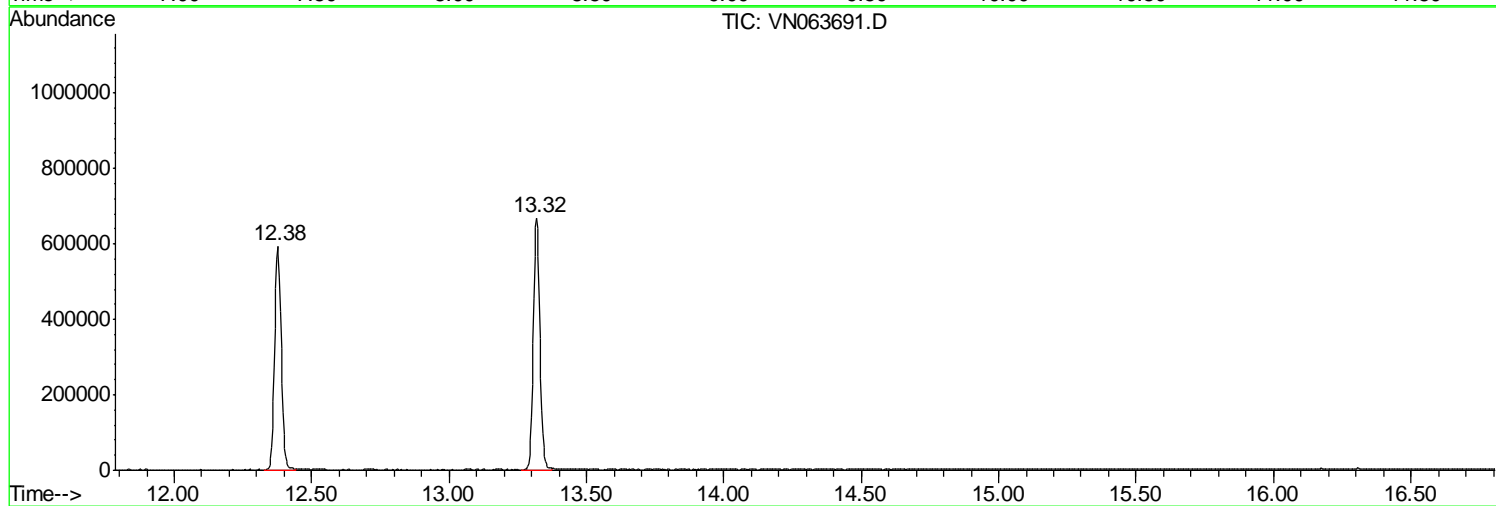
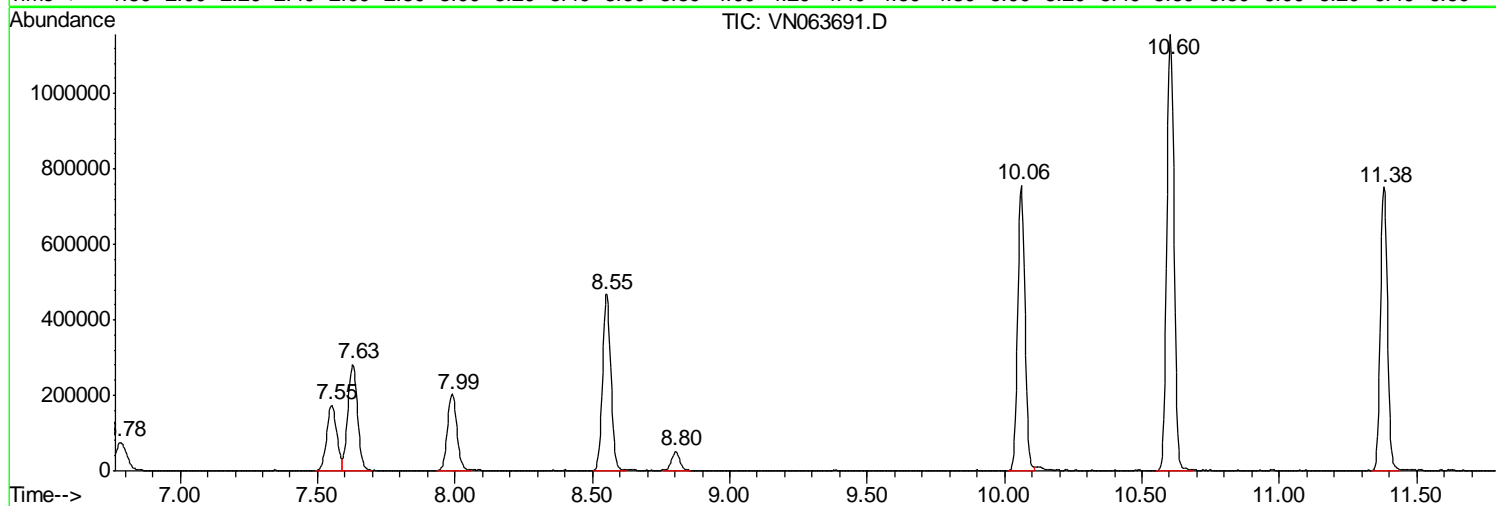
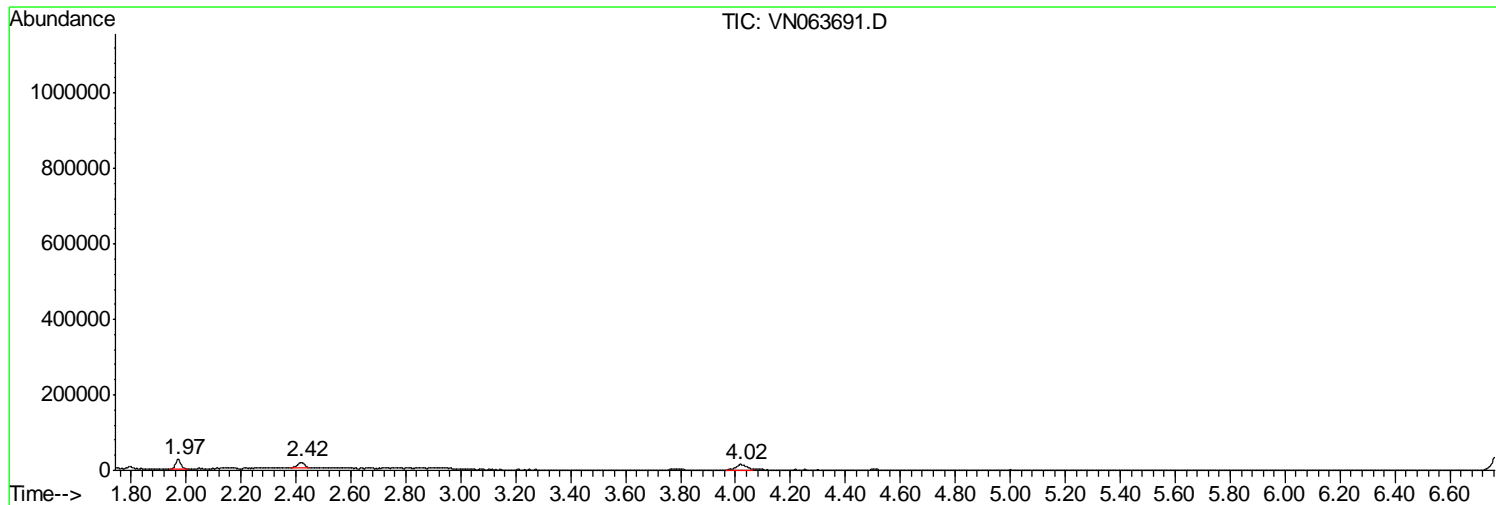
Sum of corrected areas: 9974377

Data Path : Z:\VOASRV\HPCHEM1\MSVOA N\DATA\VN092520\  
Data File : VN063691.D  
Acq On : 25 Sep 2020 20:18  
Operator : JC/MD  
Sample : L4133-01  
Misc : 5.00mL/MSVOA N/WATER  
ALS Vial : 19 Sample Multiplier: 1

Instrument :  
MSVOA\_N  
ClientSampled :  
MW1S

Quant Method : Z:\VOASRV\HPCHEM1\MSVOA\_N\METHODS\82N091620W.M  
Quant Title : SW846 8260

TIC Library : C:\DATABASE\NIST11.L  
TIC Integration Parameters: LSCINT.P



Data Path : Z:\VOASRV\HPCHEM1\MSVOA\_N\DATA\VN092520\  
Data File : VN063691.D  
Acq On : 25 Sep 2020 20:18  
Operator : JC/MD  
Sample : L4133-01  
Misc : 5.00mL/MSVOA\_N/WATER  
ALS Vial : 19 Sample Multiplier: 1

Instrument :  
MSVOA\_N  
ClientSampleId :  
MW1S

Quant Method : Z:\VOASRV\HPCHEM1\MSVOA\_N\METHODS\82N091620W.M  
Quant Title : SW846 8260

TIC Library : C:\DATABASE\NIST11.L  
TIC Integration Parameters: LSCINT.P

No Library Search Compounds Detected

\*\*\*\*\*

Data Path : Z:\VOASRV\HPCHEM1\MSVOA\_N\DATA\VN092520\  
Data File : VN063691.D  
Acq On : 25 Sep 2020 20:18  
Operator : JC/MD  
Sample : L4133-01  
Misc : 5.00mL/MSVOA\_N/WATER  
ALS Vial : 19 Sample Multiplier: 1

Instrument :  
MSVOA\_N  
ClientSampleId :  
MW1S

Quant Method : Z:\VOASRV\HPCHEM1\MSVOA\_N\METHODS\82N091620W.M  
Quant Title : SW846 8260

TIC Library : C:\DATABASE\NIST11.L  
TIC Integration Parameters: LSCINT.P

TIC Top Hit name	RT	EstConc	Units	Response	--Internal Standard--			
					#	RT	Resp	Conc

---