

Data Path : Z:\voasrv\HPCHEM1\MSVOA_N\Data\VN092523\
 Data File : VN079342.D
 Acq On : 25 Sep 2023 13:44
 Operator : JC\MD
 Sample : 04531-05
 Misc : 5.0mL/MSVOA_N/WATER
 ALS Vial : 8 Sample Multiplier: 1

Instrument :
 MSVOA_N
 ClientSampleId :
 TP-A

Quant Time: Sep 26 06:19:33 2023
 Quant Method : Z:\voasrv\HPCHEM1\MSVOA_N\methods\82N091123W.M
 Quant Title : SW846 8260
 QLast Update : Tue Sep 12 05:05:24 2023
 Response via : Initial Calibration

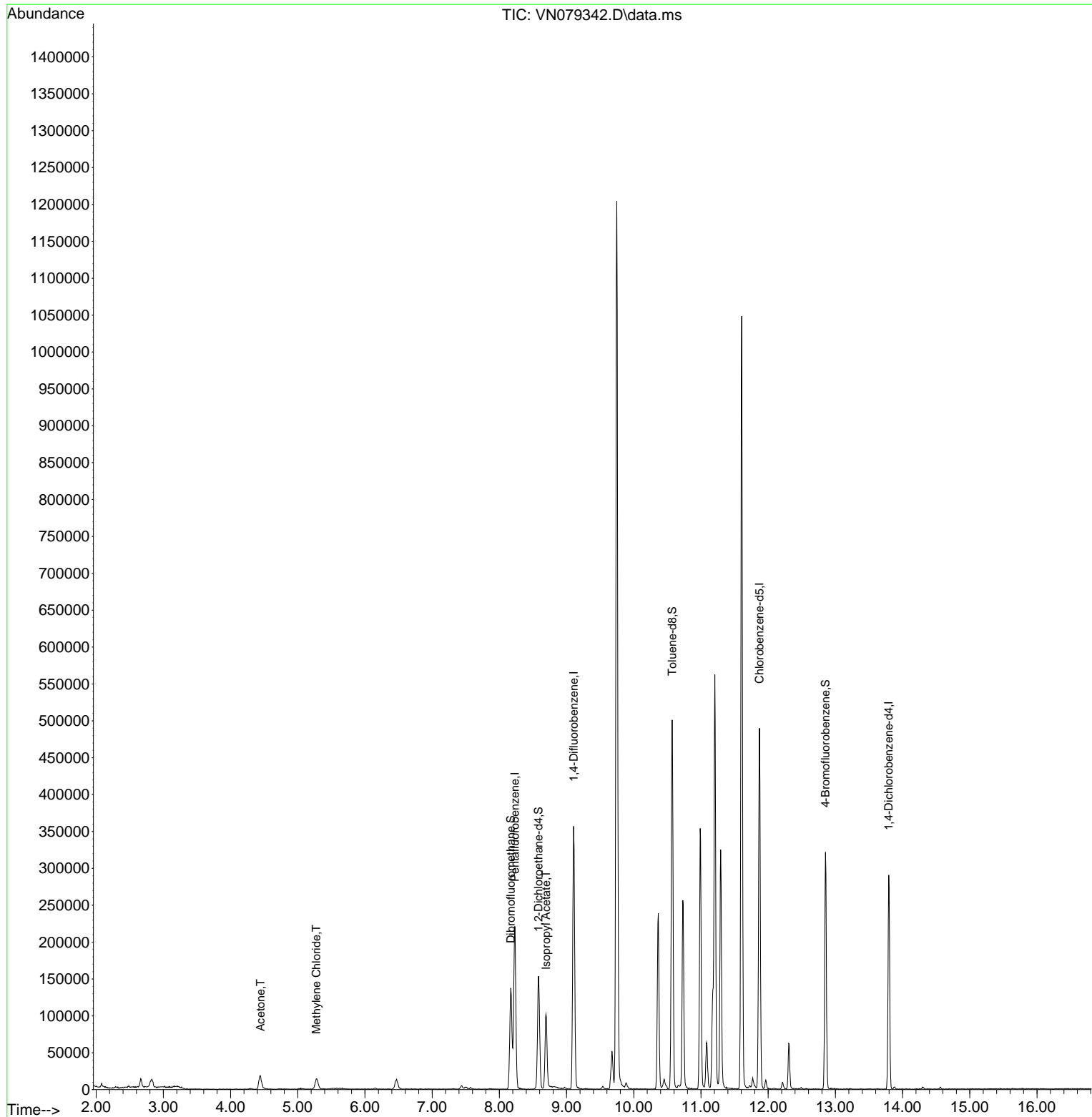
Compound	R.T.	QIon	Response	Conc	Units	Dev(Min)
Internal Standards						
1) Pentafluorobenzene	8.230	168	152278	50.000	ug/l	0.00
34) 1,4-Difluorobenzene	9.106	114	293217	50.000	ug/l	0.00
63) Chlorobenzene-d5	11.870	117	274873	50.000	ug/l	0.00
72) 1,4-Dichlorobenzene-d4	13.794	152	73140	50.000	ug/l	0.00
System Monitoring Compounds						
33) 1,2-Dichloroethane-d4	8.582	65	122716	59.698	ug/l	0.00
Spiked Amount	50.000	Range	74 - 125	Recovery	=	119.400%
35) Dibromofluoromethane	8.171	113	96661	49.559	ug/l	0.00
Spiked Amount	50.000	Range	75 - 124	Recovery	=	99.120%
50) Toluene-d8	10.571	98	336519	46.989	ug/l	0.00
Spiked Amount	50.000	Range	86 - 113	Recovery	=	93.980%
62) 4-Bromofluorobenzene	12.853	95	107233	46.941	ug/l	0.00
Spiked Amount	50.000	Range	83 - 123	Recovery	=	93.880%
Target Compounds						
16) Acetone	4.447	43	36207	41.473	ug/l	92
20) Methylene Chloride	5.277	84	11566	5.444	ug/l #	87
43) Isopropyl Acetate	8.694	43	116032	23.715	ug/l #	80

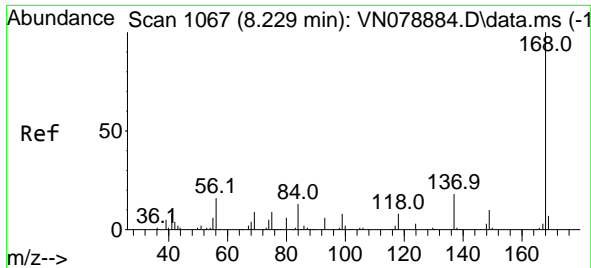
(#) = qualifier out of range (m) = manual integration (+) = signals summed

Data Path : Z:\voasrv\HPCHEM1\MSVOA_N\Data\VN092523\
 Data File : VN079342.D
 Acq On : 25 Sep 2023 13:44
 Operator : JC\MD
 Sample : 04531-05
 Misc : 5.0mL/MSVOA_N/WATER
 ALS Vial : 8 Sample Multiplier: 1

Instrument :
 MSVOA_N
 ClientSampleId :
 TP-A

Quant Time: Sep 26 06:19:33 2023
 Quant Method : Z:\voasrv\HPCHEM1\MSVOA_N\methods\82N091123W.M
 Quant Title : SW846 8260
 QLast Update : Tue Sep 12 05:05:24 2023
 Response via : Initial Calibration

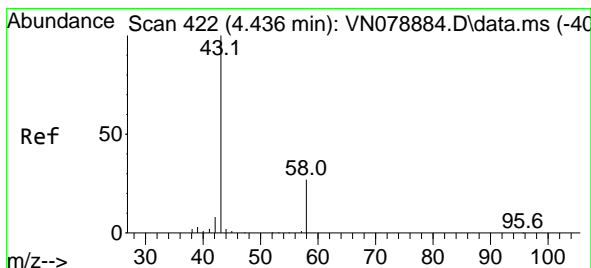
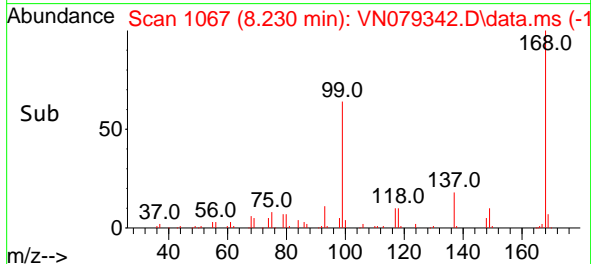
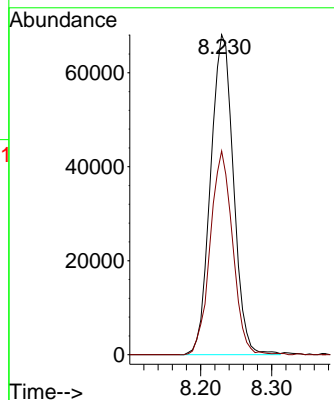
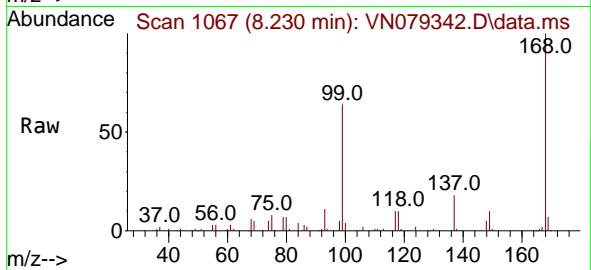




#1
 Pentafluorobenzene
 Concen: 50.000 ug/l
 RT: 8.230 min Scan# 1067
 Delta R.T. -0.000 min
 Lab File: VN079342.D
 Acq: 25 Sep 2023 13:44

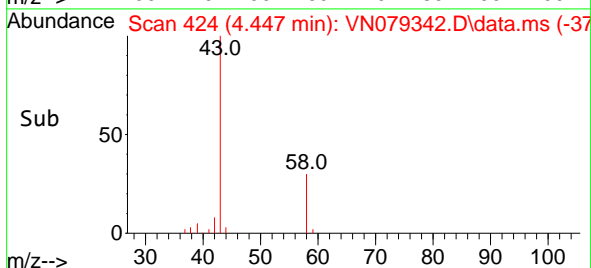
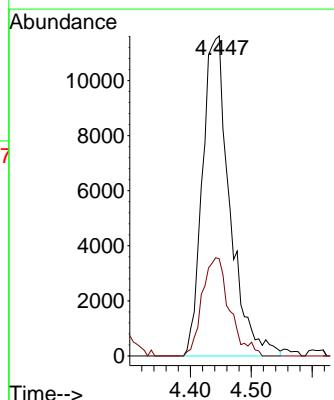
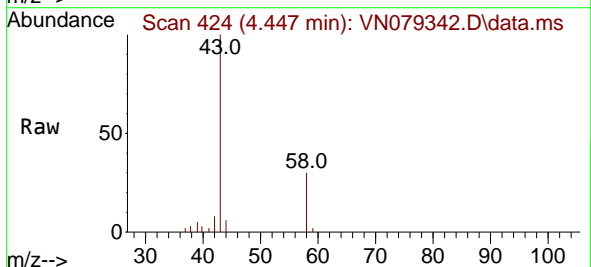
Instrument : MSVOA_N
 ClientSampleId : TP-A

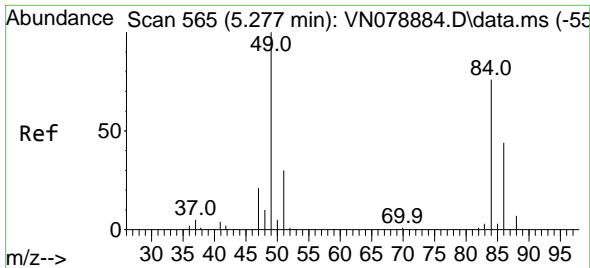
Tgt Ion:168 Resp: 152278
 Ion Ratio Lower Upper
 168 100
 99 63.6 53.0 79.6



#16
 Acetone
 Concen: 41.473 ug/l
 RT: 4.447 min Scan# 424
 Delta R.T. 0.005 min
 Lab File: VN079342.D
 Acq: 25 Sep 2023 13:44

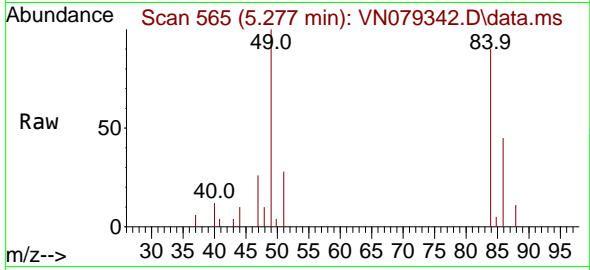
Tgt Ion: 43 Resp: 36207
 Ion Ratio Lower Upper
 43 100
 58 30.4 28.0 42.0





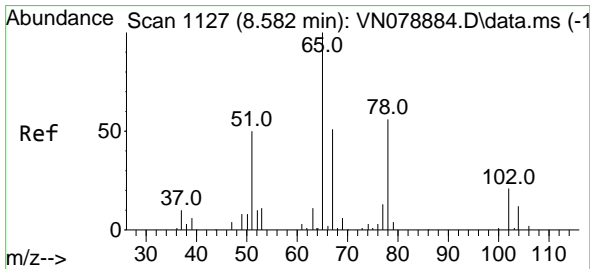
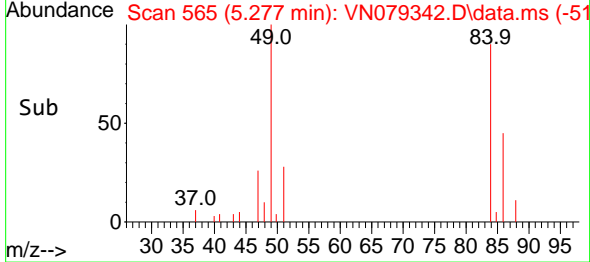
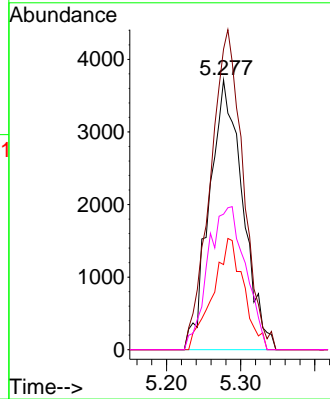
#20
 Methylene Chloride
 Concen: 5.444 ug/l
 RT: 5.277 min Scan# 50
 Delta R.T. -0.006 min
 Lab File: VN079342.D
 Acq: 25 Sep 2023 13:44

Instrument :
 MSVOA_N
 ClientSampleId :
 TP-A



Tgt Ion: 84 Resp: 11566

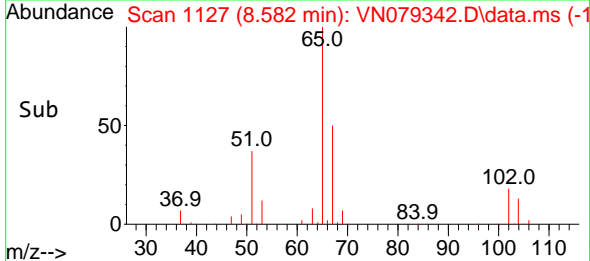
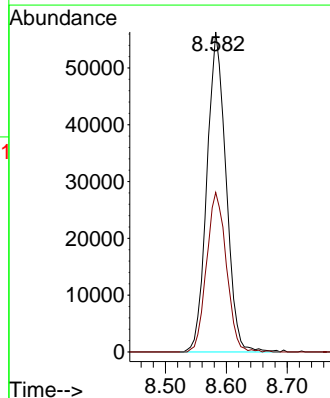
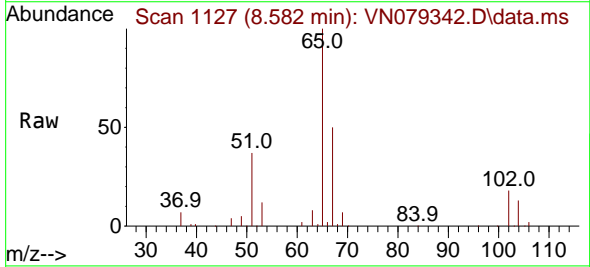
Ion	Ratio	Lower	Upper
84	100		
49	111.6	79.7	119.5
51	31.6	25.2	37.8
86	50.3	53.3	79.9

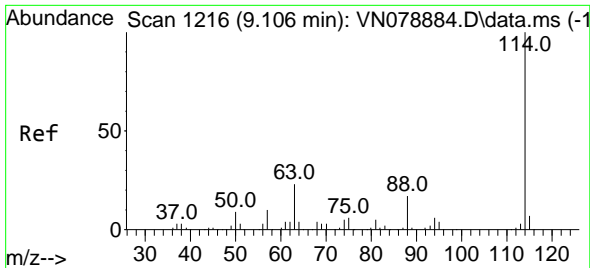


#33
 1,2-Dichloroethane-d4
 Concen: 59.698 ug/l
 RT: 8.582 min Scan# 1127
 Delta R.T. -0.001 min
 Lab File: VN079342.D
 Acq: 25 Sep 2023 13:44

Tgt Ion: 65 Resp: 122716

Ion	Ratio	Lower	Upper
65	100		
67	51.8	0.0	106.6



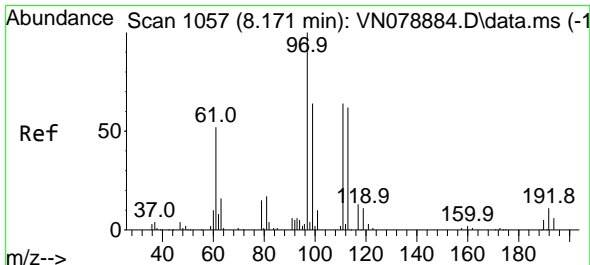
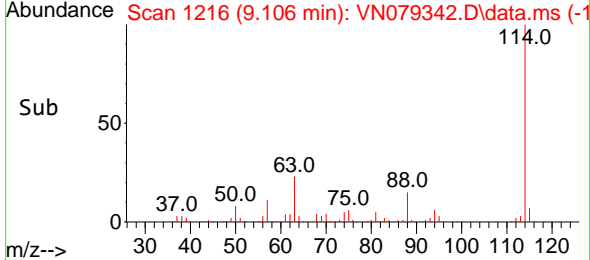
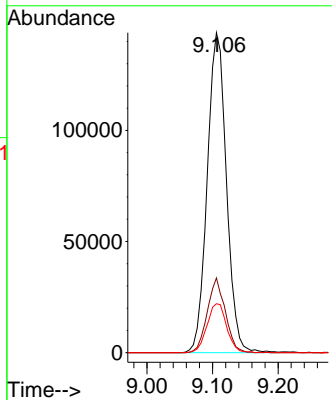
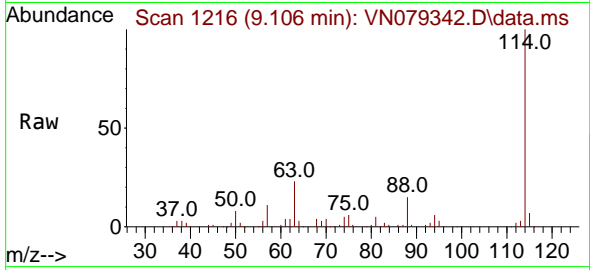


#34
 1,4-Difluorobenzene
 Concen: 50.000 ug/l
 RT: 9.106 min Scan# 11
 Delta R.T. -0.006 min
 Lab File: VN079342.D
 Acq: 25 Sep 2023 13:44

Instrument : MSVOA_N
 ClientSampleId : TP-A

Tgt Ion:114 Resp: 293217

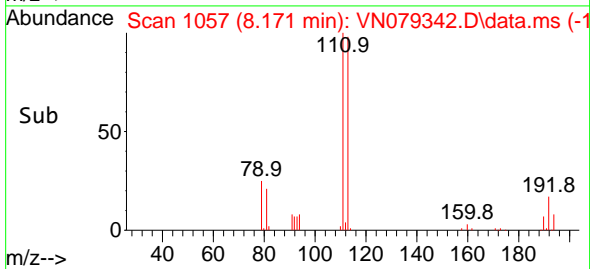
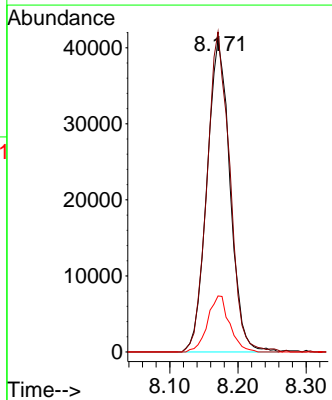
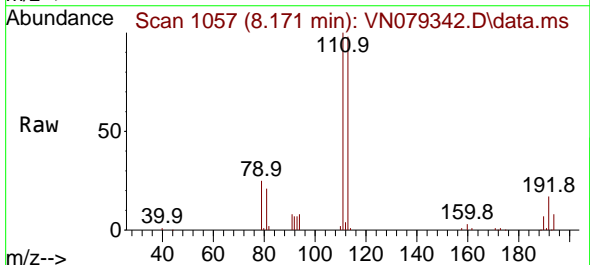
Ion	Ratio	Lower	Upper
114	100		
63	23.3	0.0	36.4
88	15.3	0.0	30.6

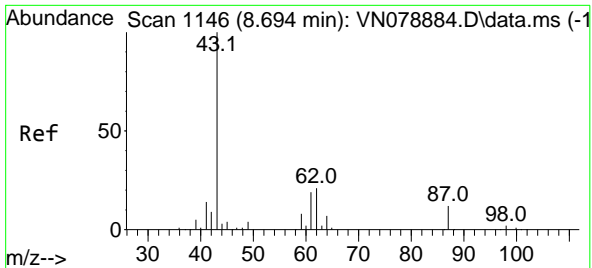


#35
 Dibromofluoromethane
 Concen: 49.559 ug/l
 RT: 8.171 min Scan# 1057
 Delta R.T. -0.000 min
 Lab File: VN079342.D
 Acq: 25 Sep 2023 13:44

Tgt Ion:113 Resp: 96661

Ion	Ratio	Lower	Upper
113	100		
111	101.3	82.6	123.8
192	17.0	12.7	19.1

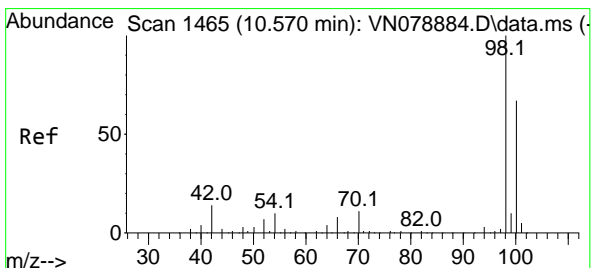
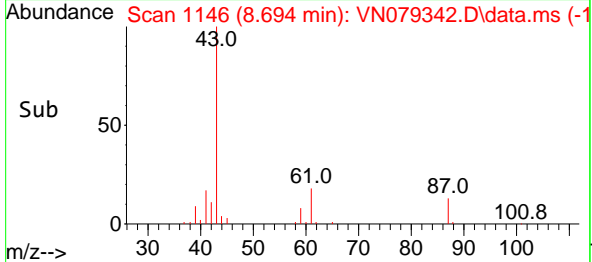
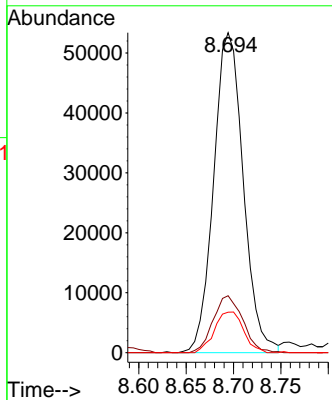
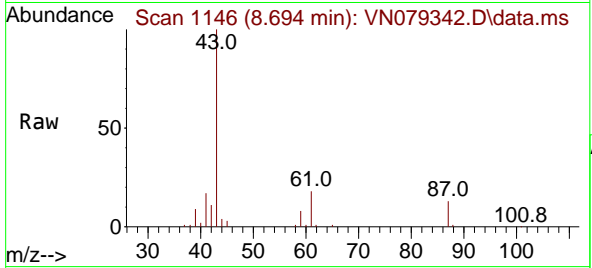




#43
 Isopropyl Acetate
 Concen: 23.715 ug/l
 RT: 8.694 min Scan# 1146
 Delta R.T. 0.000 min
 Lab File: VN079342.D
 Acq: 25 Sep 2023 13:44

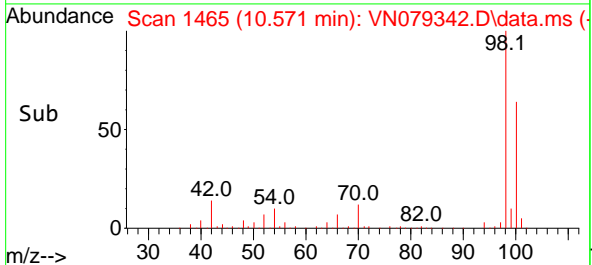
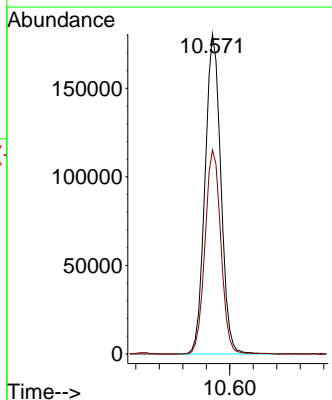
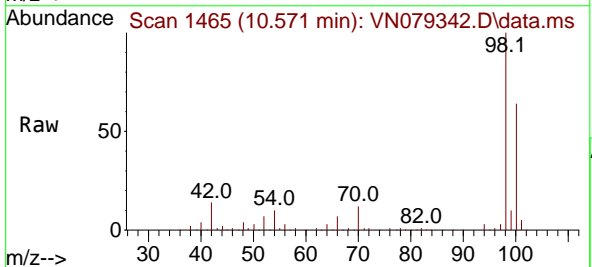
Instrument : MSVOA_N
 ClientSampleId : TP-A

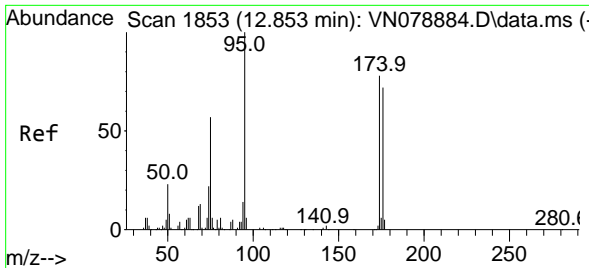
Tgt Ion: 43 Resp: 116032
 Ion Ratio Lower Upper
 43 100
 61 17.8 24.7 37.1#
 87 12.5 14.6 21.8#



#50
 Toluene-d8
 Concen: 46.989 ug/l
 RT: 10.571 min Scan# 1465
 Delta R.T. -0.000 min
 Lab File: VN079342.D
 Acq: 25 Sep 2023 13:44

Tgt Ion: 98 Resp: 336519
 Ion Ratio Lower Upper
 98 100
 100 63.8 52.0 78.0



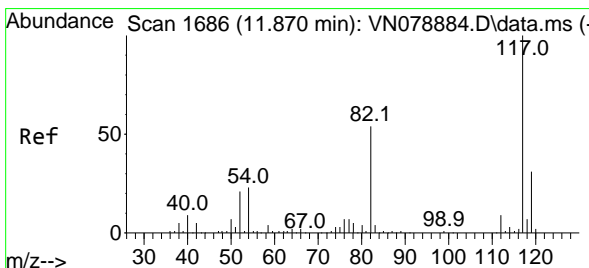
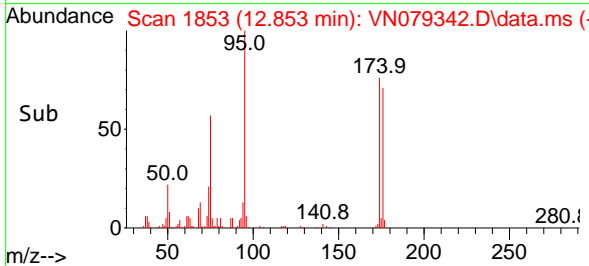
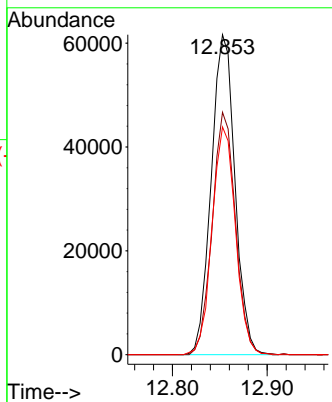
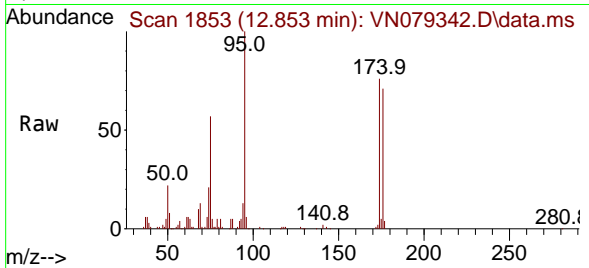


#62
 4-Bromofluorobenzene
 Concen: 46.941 ug/l
 RT: 12.853 min Scan# 1853
 Delta R.T. -0.000 min
 Lab File: VN079342.D
 Acq: 25 Sep 2023 13:44

Instrument : MSVOA_N
 ClientSampleId : TP-A

Tgt Ion: 95 Resp: 107233

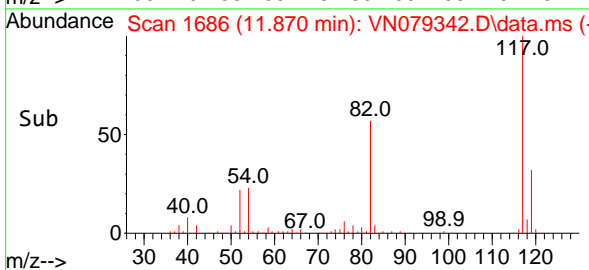
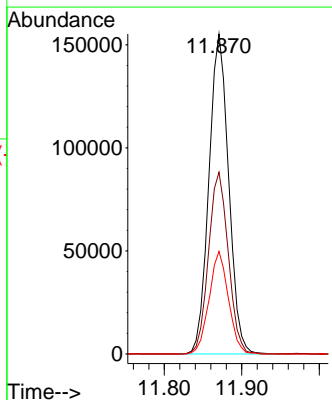
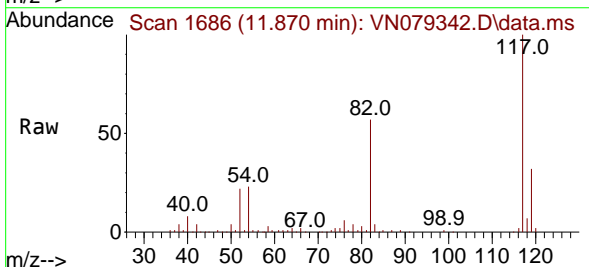
Ion	Ratio	Lower	Upper
95	100		
174	74.0	0.0	143.8
176	70.3	0.0	135.8

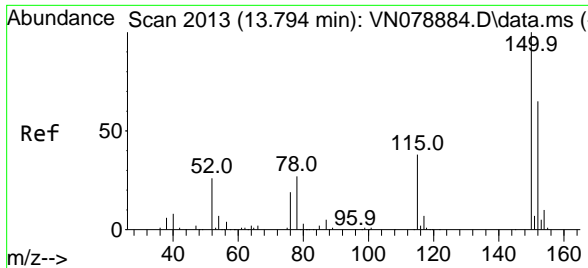


#63
 Chlorobenzene-d5
 Concen: 50.000 ug/l
 RT: 11.870 min Scan# 1686
 Delta R.T. -0.001 min
 Lab File: VN079342.D
 Acq: 25 Sep 2023 13:44

Tgt Ion: 117 Resp: 274873

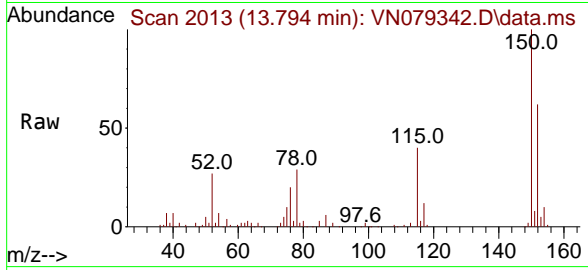
Ion	Ratio	Lower	Upper
117	100		
82	56.8	44.0	66.0
119	32.0	25.6	38.4





#72
 1,4-Dichlorobenzene-d4
 Concen: 50.000 ug/l
 RT: 13.794 min Scan# 20
 Delta R.T. -0.000 min
 Lab File: VN079342.D
 Acq: 25 Sep 2023 13:44

Instrument :
 MSVOA_N
 ClientSampleId :
 TP-A



Tgt Ion:152 Resp: 73140

Ion	Ratio	Lower	Upper
152	100		
115	61.1	32.3	96.8
150	159.3	0.0	355.8

