

Data Path : Z:\VOASRV\HPCHEM1\MSVOA N\DATA\VN092818\  
 Data File : VN051623.D  
 Acq On : 28 Sep 2018 18:47  
 Operator : MD\SY  
 Sample : J5142-01  
 Misc : 5.00mL/MSVOA N/WATER  
 ALS Vial : 19 Sample Multiplier: 28

Instrument :  
 MSVOA\_N  
 ClientSampleId :  
 SPDES-1

Integration Parameters: RTEINT3.P

Integrator: RTE  
 Smoothing : OFF Filtering: 5  
 Sampling : 1 Min Area: 0 % of largest Peak  
 Start Thrs: 0.2 Max Peaks: 100  
 Stop Thrs : 0 Peak Location: TOP

If leading or trailing edge < 100 prefer < Baseline drop else tangent >  
 Peak separation: 5

Method : Z:\VOASRV\HPCHEM1\MSVOA N\METHODS\624N092818W.M  
 Title : METHOD 624 VOLATILE ORGANIC ANALYSIS

Signal : TIC

peak #	R.T. min	first scan	max scan	last scan	PK TY	peak height	corr. area	corr. % max.	% of total
1	4.072	699	715	729	rBV2	11485	32302	3.09%	0.757%
2	6.825	1557	1571	1574	rBV2	9126	16105	1.54%	0.378%
3	7.198	1667	1687	1713	rBV3	166758	460087	43.99%	10.785%
4	7.378	1727	1743	1754	rBV3	7301	18432	1.76%	0.432%
5	8.027	1929	1945	1971	rBV	165711	394715	37.74%	9.252%
6	8.281	1995	2024	2025	rBV2	14580	45537	4.35%	1.067%
7	8.590	2105	2120	2155	rVB2	394851	832139	79.56%	19.506%
8	10.091	2572	2587	2619	rBV	554057	1045909	100.00%	24.517%
9	10.288	2636	2648	2651	rBV6	6227	11048	1.06%	0.259%
10	10.500	2700	2714	2721	rBV4	7289	14307	1.37%	0.335%
11	11.410	2983	2997	3021	rBV	469048	854211	81.67%	20.023%
12	12.403	3292	3306	3323	rBV	291601	518508	49.57%	12.154%
13	14.908	4077	4085	4098	rBV4	13752	22764	2.18%	0.534%

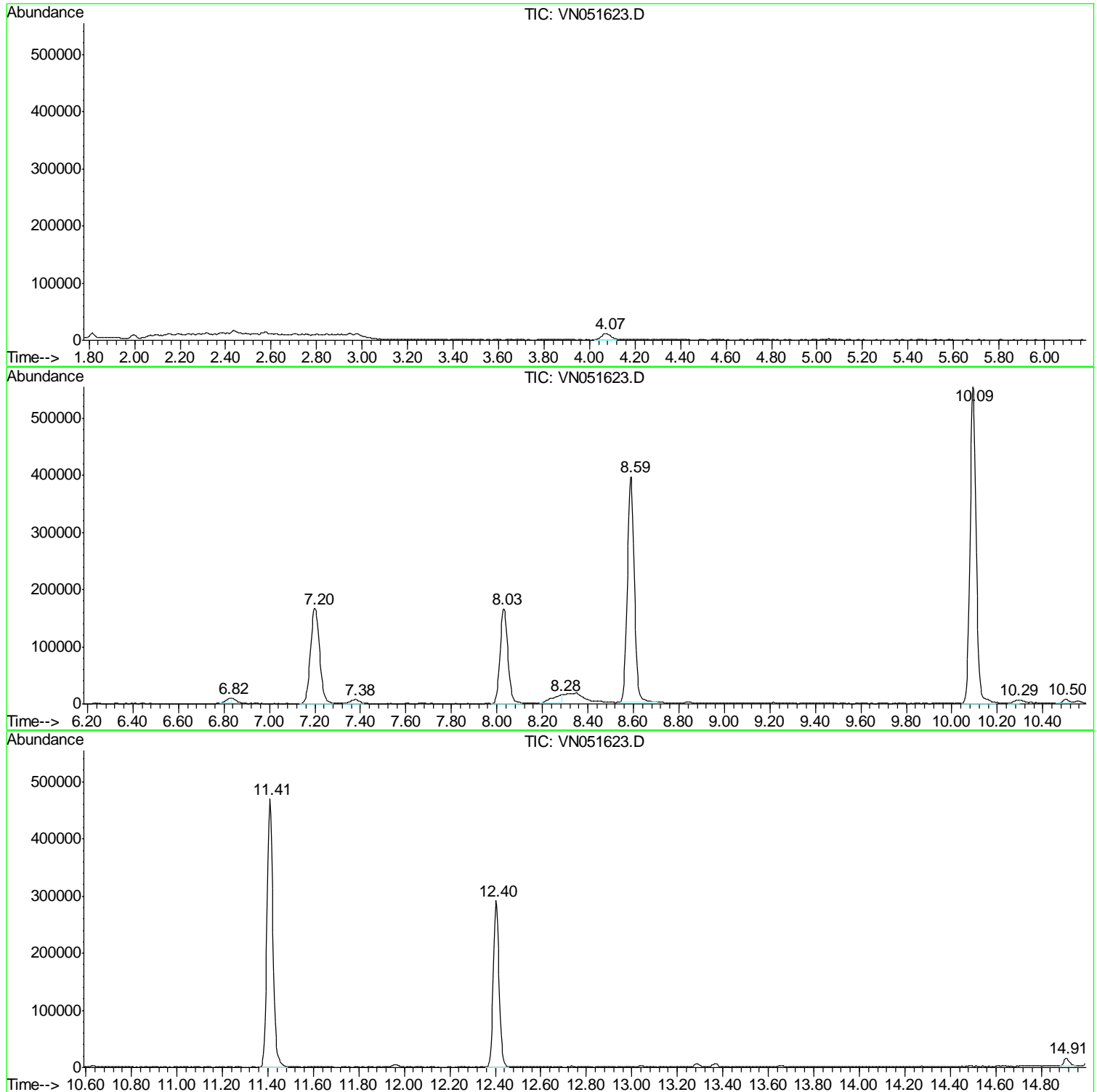
Sum of corrected areas: 4266064

Data Path : Z:\VOASRV\HPCHEM1\MSVOA N\DATA\VN092818\  
Data File : VN051623.D  
Acq On : 28 Sep 2018 18:47  
Operator : MD\SY  
Sample : J5142-01  
Misc : 5.00mL/MSVOA N/WATER  
ALS Vial : 19 Sample Multiplier: 28

Instrument :  
MSVOA\_N  
ClientSampleId :  
SPDES-1

Quant Method : Z:\VOASRV\HPCHEM1\MSVOA N\METHODS\624N092818W.M  
Quant Title : METHOD 624 VOLATILE ORGANIC ANALYSIS

TIC Library : C:\DATABASE\NIST02.L  
TIC Integration Parameters: LSCINT.P



Data Path : Z:\VOASRV\HPCHEM1\MSVOA\_N\DATA\VN092818\  
Data File : VN051623.D  
Acq On : 28 Sep 2018 18:47  
Operator : MD\SY  
Sample : J5142-01  
Misc : 5.00mL/MSVOA\_N/WATER  
ALS Vial : 19 Sample Multiplier: 28

Instrument :  
MSVOA\_N  
ClientSampleId :  
SPDES-1

Quant Method : Z:\VOASRV\HPCHEM1\MSVOA\_N\METHODS\624N092818W.M  
Quant Title : METHOD 624 VOLATILE ORGANIC ANALYSIS

TIC Library : C:\DATABASE\NIST02.L  
TIC Integration Parameters: LSCINT.P

No Library Search Compounds Detected

\*\*\*\*\*

Data Path : Z:\VOASRV\HPCHEM1\MSVOA\_N\DATA\VN092818\  
Data File : VN051623.D  
Acq On : 28 Sep 2018 18:47  
Operator : MD\SY  
Sample : J5142-01  
Misc : 5.00mL/MSVOA\_N/WATER  
ALS Vial : 19 Sample Multiplier: 28

Instrument :  
MSVOA\_N  
ClientSampleId :  
SPDES-1

Quant Method : Z:\VOASRV\HPCHEM1\MSVOA\_N\METHODS\624N092818W.M  
Quant Title : METHOD 624 VOLATILE ORGANIC ANALYSIS

TIC Library : C:\DATABASE\NIST02.L  
TIC Integration Parameters: LSCINT.P

TIC Top Hit name	RT	EstConc	Units	Response	--Internal Standard--			
					#	RT	Resp	Conc

---