

Data Path : Z:\VOASRV\HPCHEM1\MSVOA N\DATA\VN093019\
 Data File : VN058436.D
 Acq On : 30 Sep 2019 15:33
 Operator : JC/SP
 Sample : K5080-16
 Misc : 5.00mL/MSVOA N/WATER
 ALS Vial : 18 Sample Multiplier: 1

Instrument :
 MSVOA_N
 ClientSampleId :
 SA-DUP01-20190924

Quant Time: Oct 01 04:19:57 2019
 Quant Method : Z:\VOASRV\HPCHEM1\MSVOA_N\METHODS\82N092719W.M
 Quant Title : SW846 8260
 QLast Update : Mon Sep 30 08:07:38 2019
 Response via : Initial Calibration

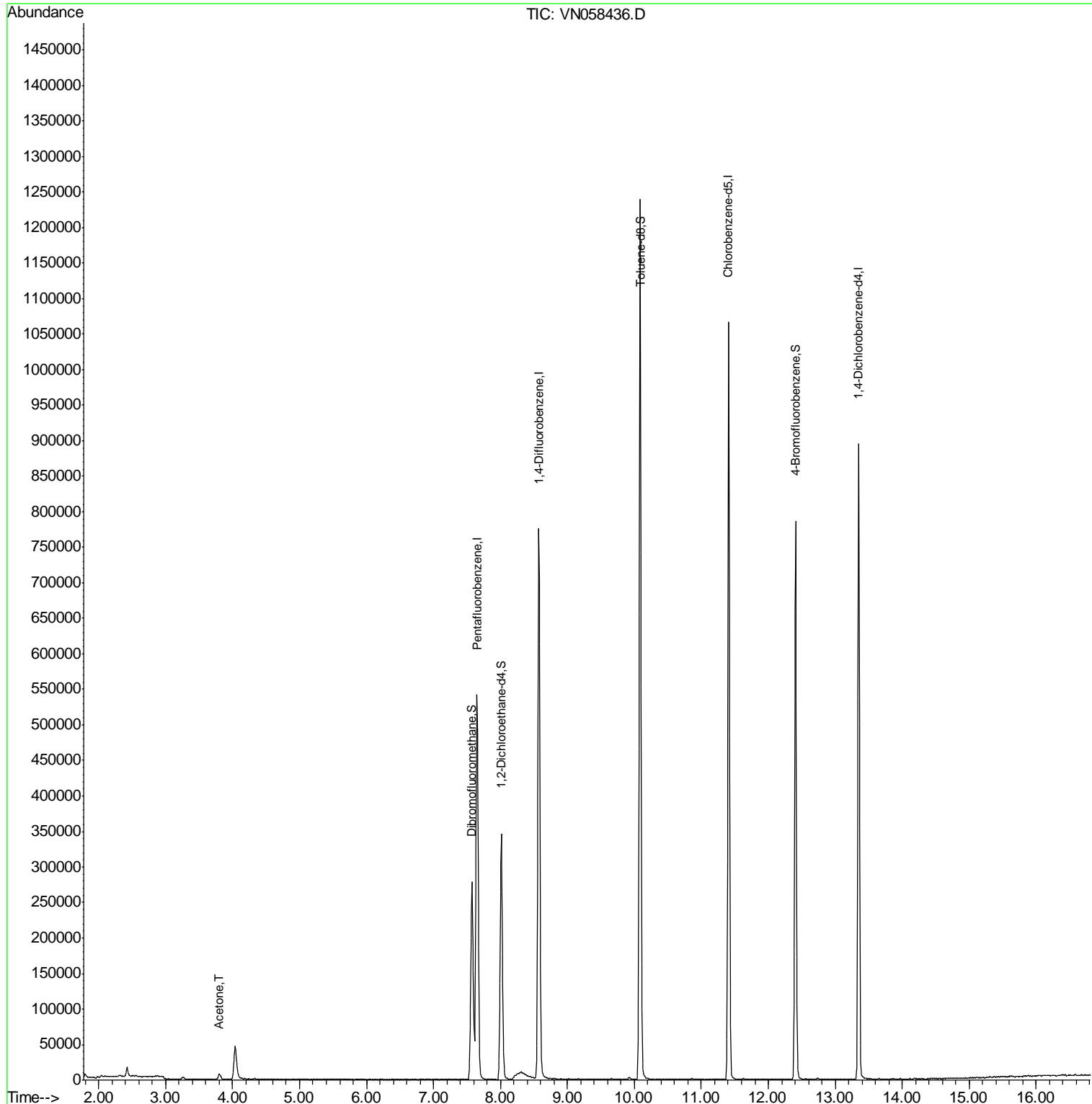
Internal Standards	R.T.	QIon	Response	Conc	Units	Dev(Min)
1) Pentafluorobenzene	7.65	168	413741	50.00	ug/l	0.00
34) 1,4-Difluorobenzene	8.57	114	679633	50.00	ug/l	0.00
63) Chlorobenzene-d5	11.41	117	578346	50.00	ug/l	0.00
72) 1,4-Dichlorobenzene-d4	13.35	152	224233	50.00	ug/l	0.00
System Monitoring Compounds						
33) 1,2-Dichloroethane-d4	8.01	65	304155	50.31	ug/l	0.00
Spiked Amount	50.000		Recovery	=	100.62%	
35) Dibromofluoromethane	7.57	113	209945	50.40	ug/l	0.00
Spiked Amount	50.000		Recovery	=	100.80%	
50) Toluene-d8	10.09	98	846257	51.86	ug/l	0.00
Spiked Amount	50.000		Recovery	=	103.72%	
62) 4-Bromofluorobenzene	12.41	95	266881	45.23	ug/l	0.00
Spiked Amount	50.000		Recovery	=	90.46%	
Target Compounds						
16) Acetone	3.81	43	13574	6.586	ug/l	97

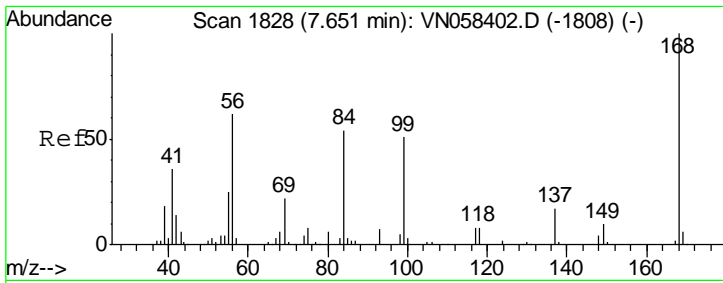
(#) = qualifier out of range (m) = manual integration (+) = signals summed

Data Path : Z:\VOASRV\HPCHEM1\MSVOA N\DATA\VN093019\
 Data File : VN058436.D
 Acq On : 30 Sep 2019 15:33
 Operator : JC/SP
 Sample : K5080-16
 Misc : 5.00mL/MSVOA N/WATER
 ALS Vial : 18 Sample Multiplier: 1

Instrument :
 MSVOA_N
 ClientSampleId :
 SA-DUP01-20190924

Quant Time: Oct 01 04:19:57 2019
 Quant Method : Z:\VOASRV\HPCHEM1\MSVOA_N\METHODS\82N092719W.M
 Quant Title : SW846 8260
 QLast Update : Mon Sep 30 08:07:38 2019
 Response via : Initial Calibration

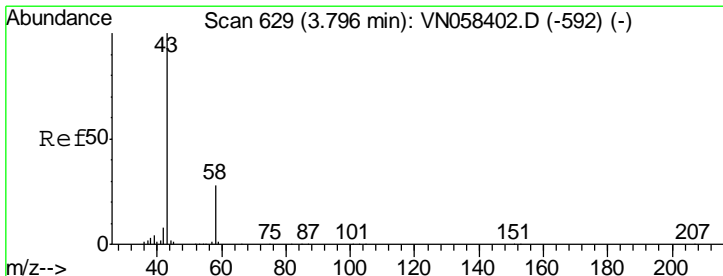
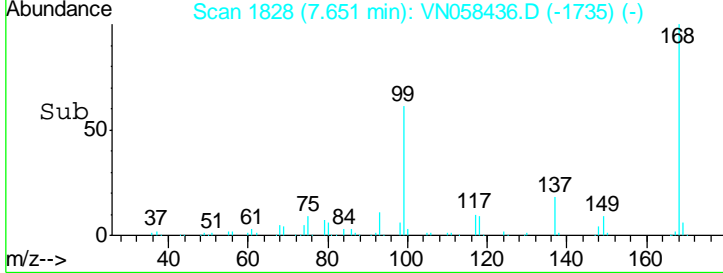
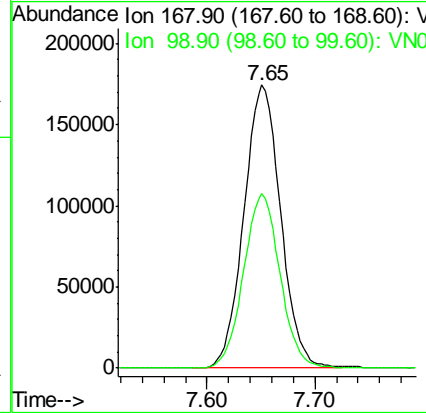
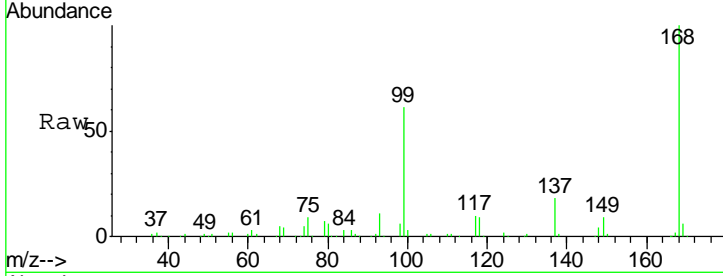




#1
 Pentafluorobenzene
 Concen: 50.000 ug/l
 RT: 7.65 min Scan# 1828
 Delta R.T. 0.00 min
 Lab File: VN058436.D
 Acq: 30 Sep 2019 15:33

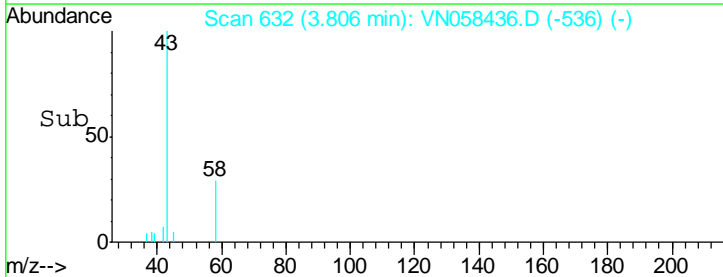
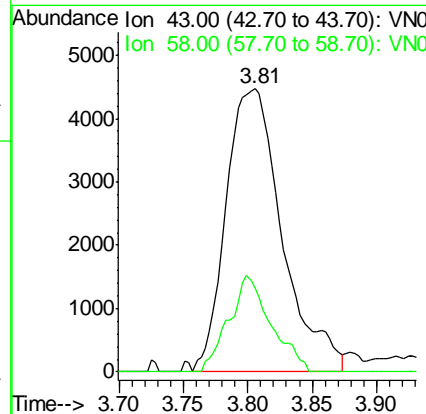
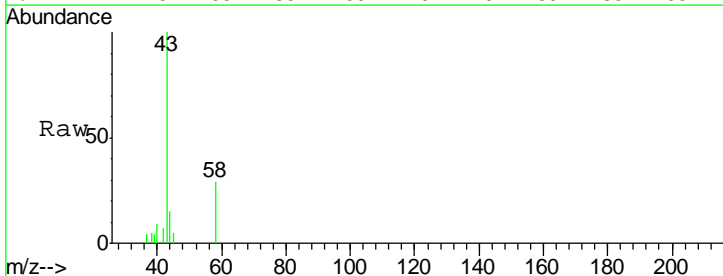
Instrument :
 MSVOA_N
 ClientSampled :
 SA-DUP01-20190924

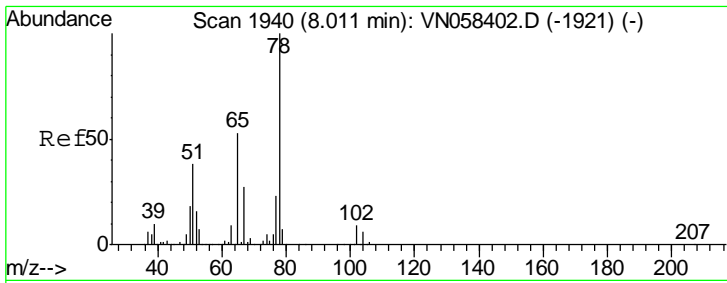
Tgt Ion: 168 Resp: 413741
 Ion Ratio Lower Upper
 168 100
 99 61.5 47.7 71.5



#16
 Acetone
 Concen: 6.586 ug/l
 RT: 3.81 min Scan# 632
 Delta R.T. 0.01 min
 Lab File: VN058436.D
 Acq: 30 Sep 2019 15:33

Tgt Ion: 43 Resp: 13574
 Ion Ratio Lower Upper
 43 100
 58 29.4 22.4 33.6

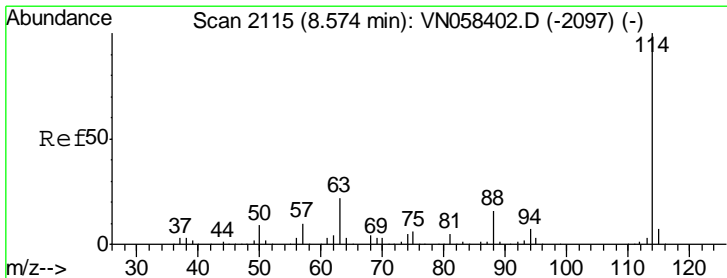
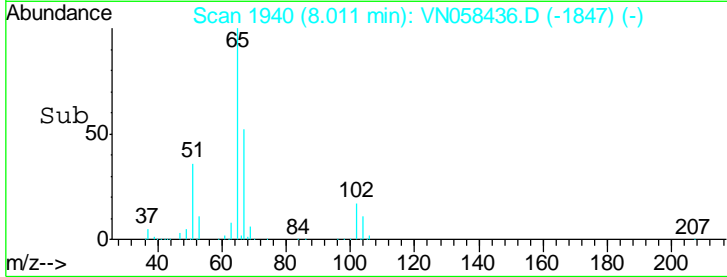
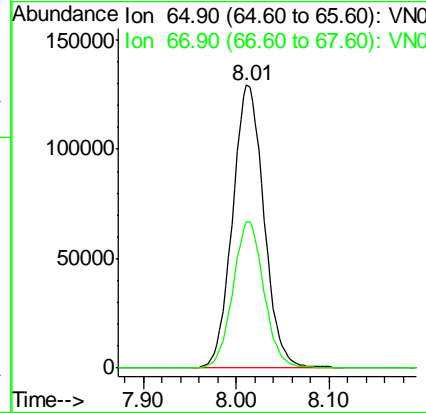
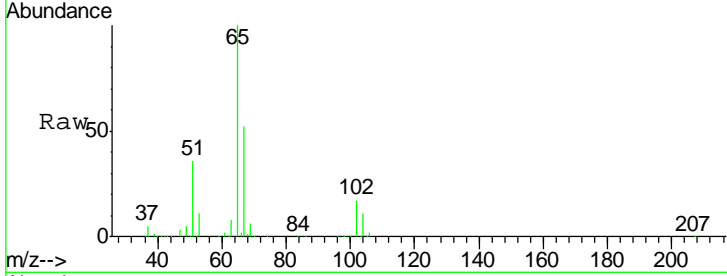




#33
 1,2-Dichloroethane-d4
 Concen: 50.306 ug/l
 RT: 8.01 min Scan# 1940
 Delta R.T. 0.00 min
 Lab File: VN058436.D
 Acq: 30 Sep 2019 15:33

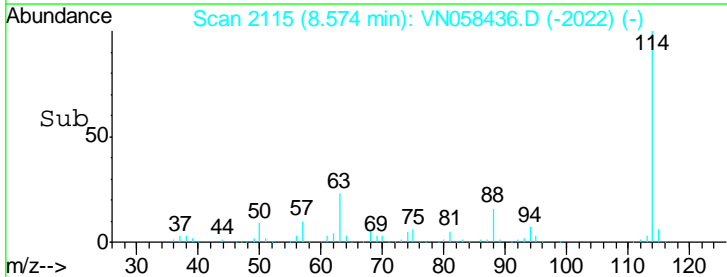
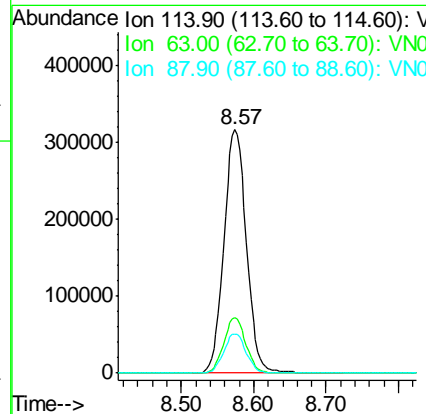
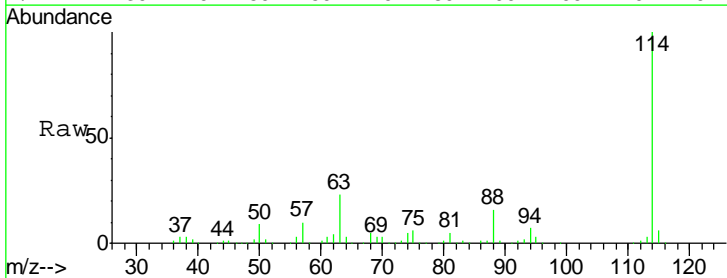
Instrument :
 MSVOA_N
 ClientSampleId :
 SA-DUP01-20190924

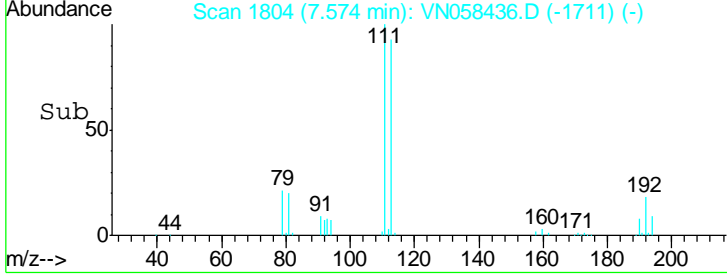
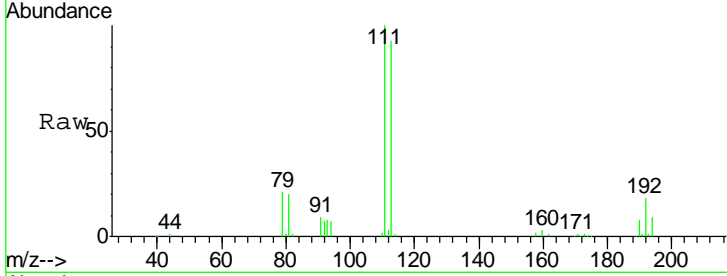
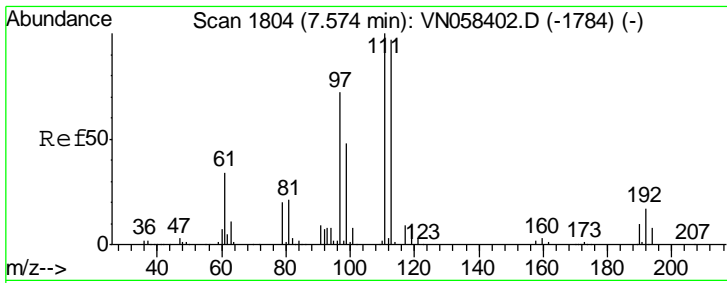
Tgt Ion: 65 Resp: 304155
 Ion Ratio Lower Upper
 65 100
 67 51.0 0.0 102.4



#34
 1,4-Difluorobenzene
 Concen: 50.000 ug/l
 RT: 8.57 min Scan# 2115
 Delta R.T. 0.00 min
 Lab File: VN058436.D
 Acq: 30 Sep 2019 15:33

Tgt Ion: 114 Resp: 679633
 Ion Ratio Lower Upper
 114 100
 63 22.7 0.0 45.0
 88 16.1 0.0 32.2

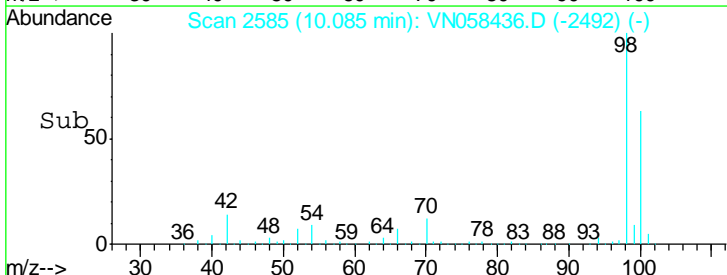
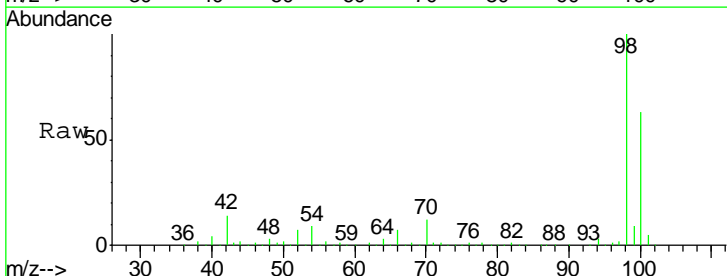
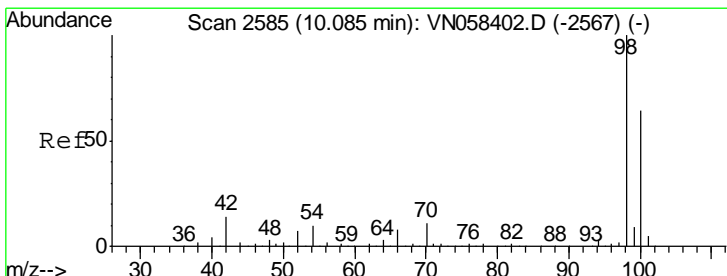
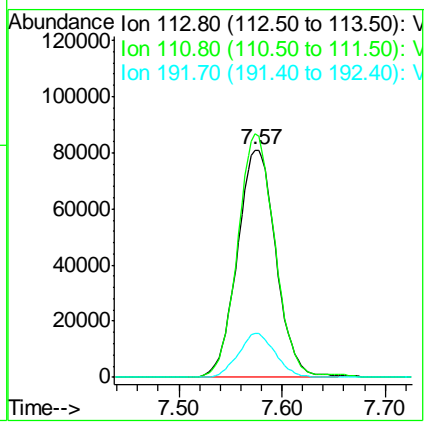




#35
 Dibromofluoromethane
 Concen: 50.402 ug/l
 RT: 7.57 min Scan# 1804
 Delta R.T. 0.00 min
 Lab File: VN058436.D
 Acq: 30 Sep 2019 15:33

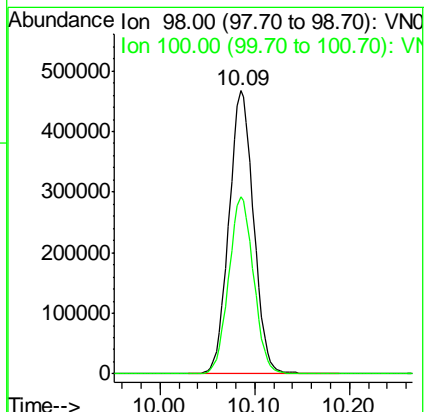
Instrument :
 MSVOA_N
 ClientSampleId :
 SA-DUP01-20190924

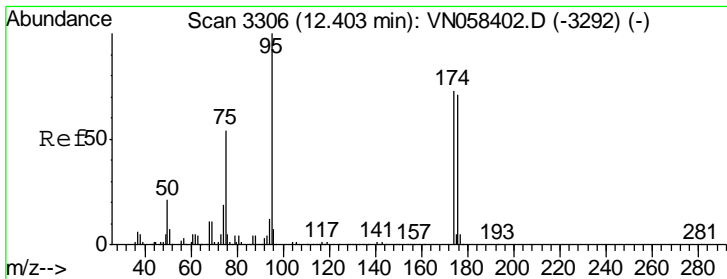
Tgt Ion	Resp	Lower	Upper
113	209945		
113	100		
111	103.1	83.4	125.2
192	18.5	14.9	22.3



#50
 Toluene-d8
 Concen: 51.862 ug/l
 RT: 10.09 min Scan# 2585
 Delta R.T. 0.00 min
 Lab File: VN058436.D
 Acq: 30 Sep 2019 15:33

Tgt Ion	Resp	Lower	Upper
98	846257		
98	100		
100	63.2	51.0	76.6

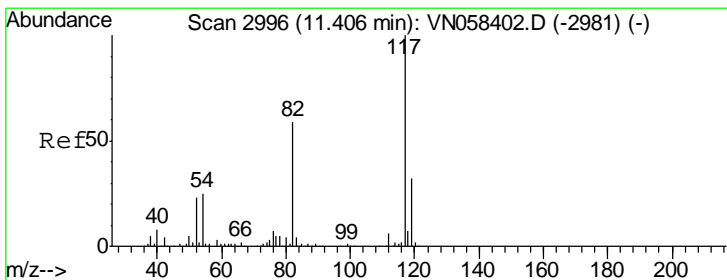
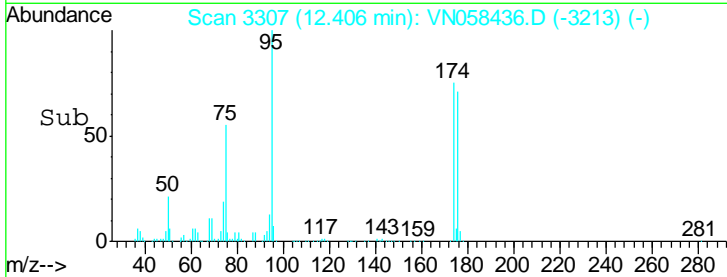
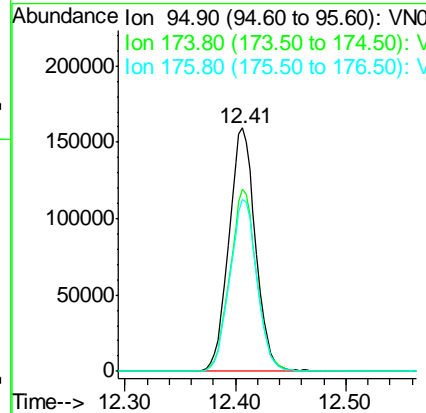
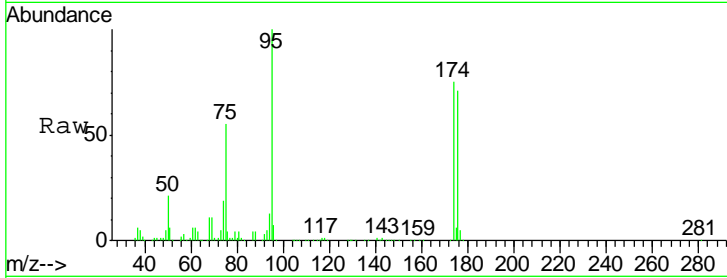




#62
 4-Bromofluorobenzene
 Concen: 45.233 ug/l
 RT: 12.41 min Scan# 3307
 Delta R.T. 0.00 min
 Lab File: VN058436.D
 Acq: 30 Sep 2019 15:33

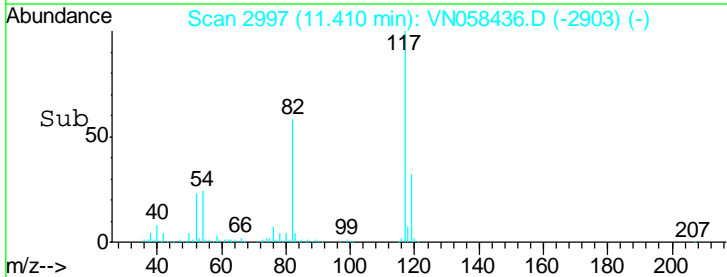
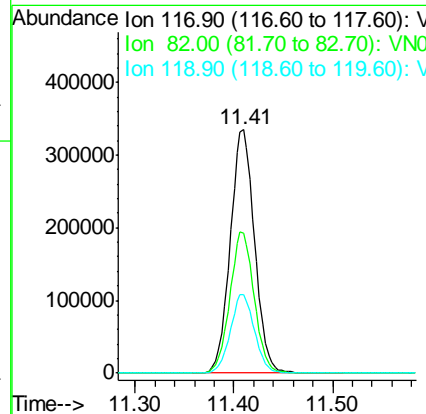
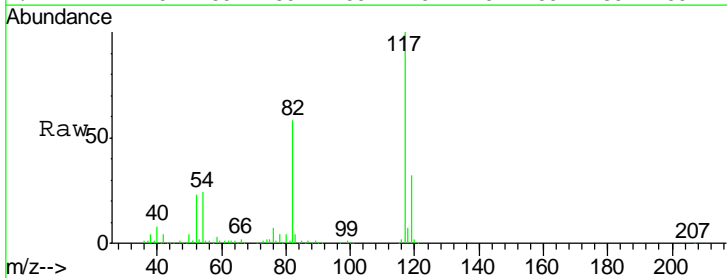
Instrument :
 MSVOA_N
 ClientSampleId :
 SA-DUP01-20190924

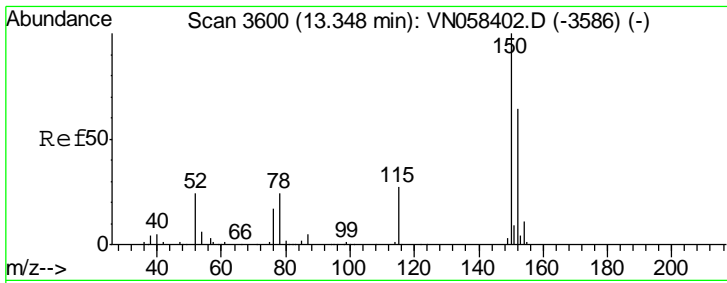
Tgt Ion	Resp	Lower	Upper
95	266881		
174	74.9	0.0	150.6
176	71.8	0.0	146.2



#63
 Chlorobenzene-d5
 Concen: 50.000 ug/l
 RT: 11.41 min Scan# 2997
 Delta R.T. 0.00 min
 Lab File: VN058436.D
 Acq: 30 Sep 2019 15:33

Tgt Ion	Resp	Lower	Upper
117	578346		
82	57.6	47.4	71.0
119	32.1	25.5	38.3





#72
 1,4-Dichlorobenzene-d4
 Concen: 50.000 ug/l
 RT: 13.35 min Scan# 3600
 Delta R.T. 0.00 min
 Lab File: VN058436.D
 Acq: 30 Sep 2019 15:33

Instrument :
 MSVOA_N
 ClientSampleId :
 SA-DUP01-20190924

Tot Ion:152 Resp: 224233

Ion	Ratio	Lower	Upper
152	100		
115	61.4	30.0	90.0
150	156.3	0.0	348.2

