

Data Path : Z:\VOASRV\HPCHEM1\MSVOA N\DATA\VN093019\
 Data File : VN058448.D
 Acq On : 30 Sep 2019 19:58
 Operator : JC/SP
 Sample : K5079-04
 Misc : 5.00mL/MSVOA N/WATER
 ALS Vial : 30 Sample Multiplier: 1

Instrument :
 MSVOA_N
 ClientSampleId :
 TP-1-COMP

Quant Time: Oct 01 05:21:51 2019
 Quant Method : Z:\VOASRV\HPCHEM1\MSVOA_N\METHODS\82N092719W.M
 Quant Title : SW846 8260
 QLast Update : Mon Sep 30 08:07:38 2019
 Response via : Initial Calibration

Internal Standards	R.T.	QIon	Response	Conc	Units	Dev(Min)
1) Pentafluorobenzene	7.65	168	422435	50.00	ug/l	0.00
34) 1,4-Difluorobenzene	8.57	114	700801	50.00	ug/l	0.00
63) Chlorobenzene-d5	11.41	117	609814	50.00	ug/l	0.00
72) 1,4-Dichlorobenzene-d4	13.35	152	243412	50.00	ug/l	0.00

System Monitoring Compounds

33) 1,2-Dichloroethane-d4	8.01	65	304036	49.25	ug/l	0.00
Spiked Amount				50.000		
			Recovery	=	98.50%	
35) Dibromofluoromethane	7.58	113	217251	50.58	ug/l	0.00
Spiked Amount				50.000		
			Recovery	=	101.16%	
50) Toluene-d8	10.09	98	882614	52.46	ug/l	0.00
Spiked Amount				50.000		
			Recovery	=	104.92%	
62) 4-Bromofluorobenzene	12.41	95	287632	47.28	ug/l	0.00
Spiked Amount				50.000		
			Recovery	=	94.56%	

Target Compounds

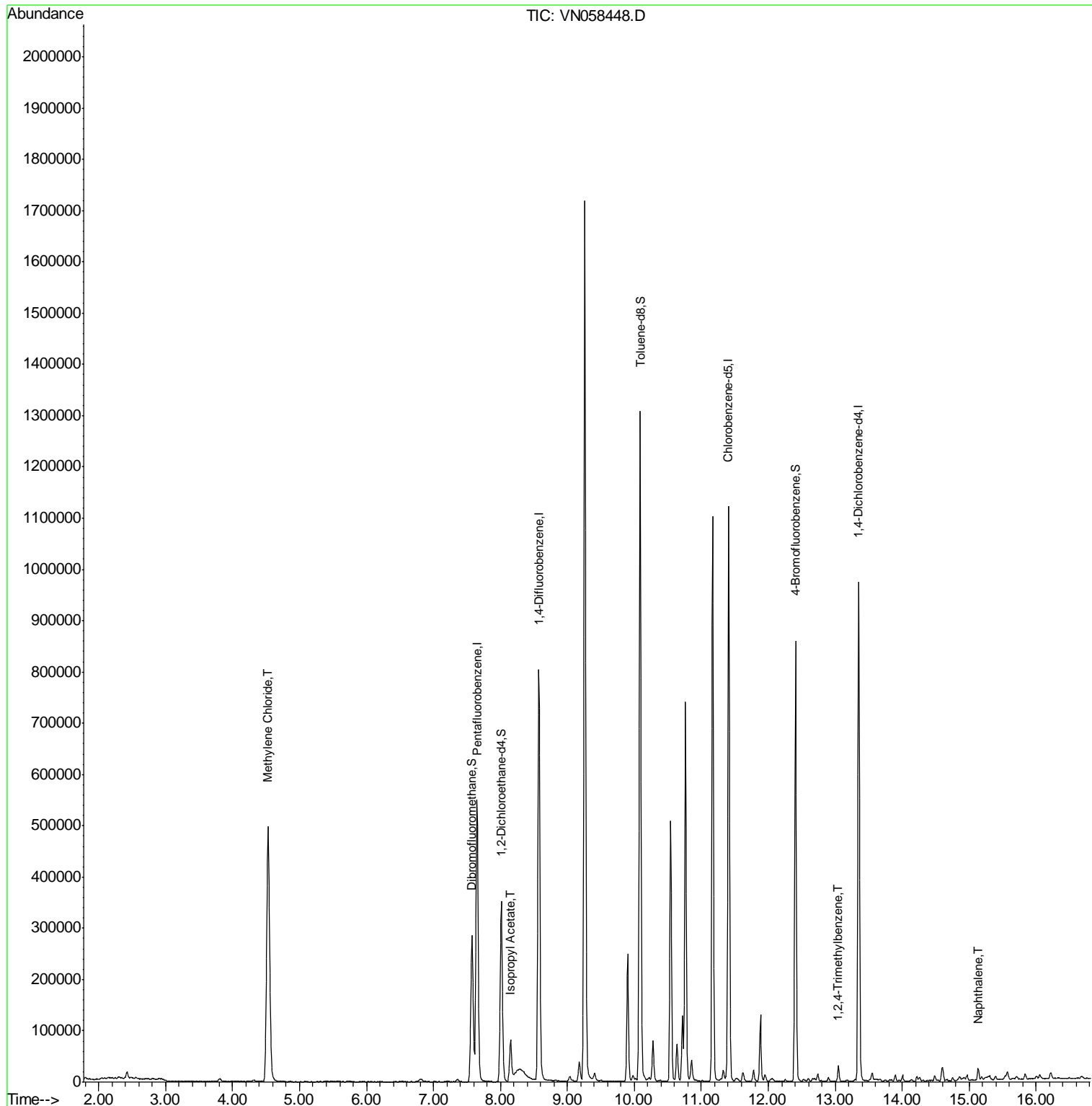
						Qvalue
20) Methylene Chloride	4.53	84	364758	75.109	ug/l	99
43) Isopropyl Acetate	8.15	43	96101	8.995	ug/l	100
84) 1,2,4-Trimethylbenzene	13.05	105	17067	1.131	ug/l	98
95) Naphthalene	15.13	128	19603	1.620	ug/l	98

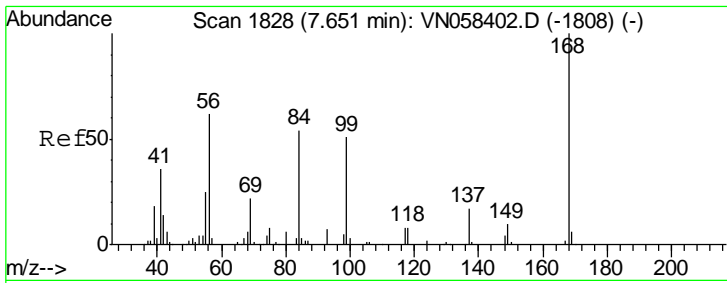
(#) = qualifier out of range (m) = manual integration (+) = signals summed

Data Path : Z:\VOASRV\HPCHEM1\MSVOA N\DATA\VN093019\
 Data File : VN058448.D
 Acq On : 30 Sep 2019 19:58
 Operator : JC/SP
 Sample : K5079-04
 Misc : 5.00mL/MSVOA N/WATER
 ALS Vial : 30 Sample Multiplier: 1

Instrument :
 MSVOA_N
 ClientSampleId :
 TP-1-COMP

Quant Time: Oct 01 05:21:51 2019
 Quant Method : Z:\VOASRV\HPCHEM1\MSVOA_N\METHODS\82N092719W.M
 Quant Title : SW846 8260
 QLast Update : Mon Sep 30 08:07:38 2019
 Response via : Initial Calibration

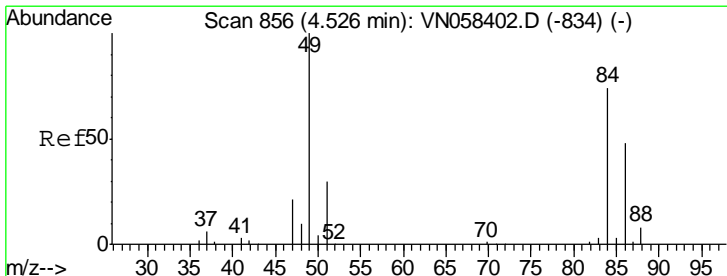
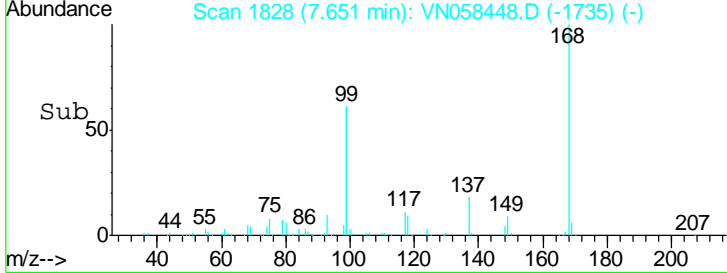
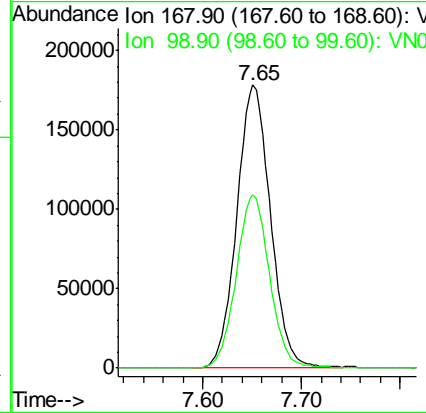
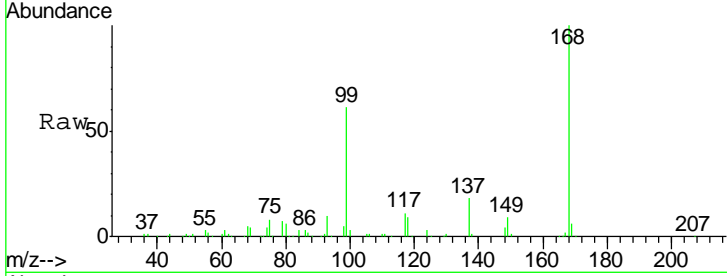




#1
 Pentafluorobenzene
 Concen: 50.000 ug/l
 RT: 7.65 min Scan# 1828
 Delta R.T. 0.00 min
 Lab File: VN058448.D
 Acq: 30 Sep 2019 19:58

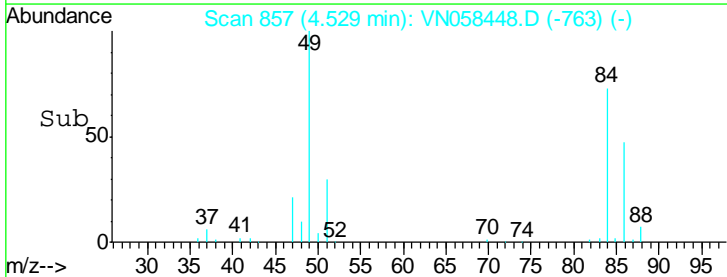
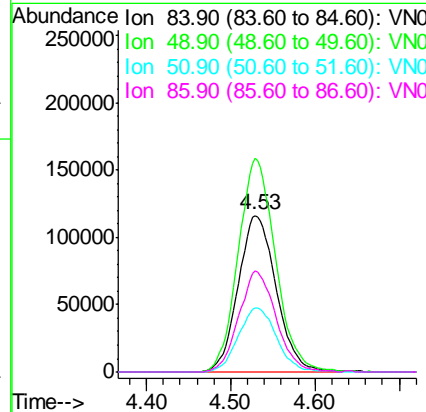
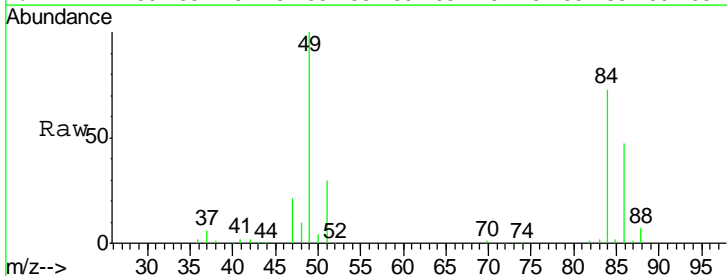
Instrument :
 MSVOA_N
 ClientSampleID :
 TP-1-COMP

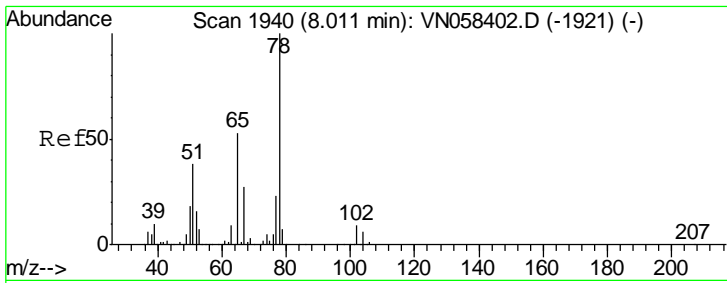
Tgt Ion	Resp	Lower	Upper
168	100		
99	61.4	47.7	71.5



#20
 Methylene Chloride
 Concen: 75.109 ug/l
 RT: 4.53 min Scan# 857
 Delta R.T. 0.00 min
 Lab File: VN058448.D
 Acq: 30 Sep 2019 19:58

Tgt Ion	Resp	Lower	Upper
84	100		
49	136.4	107.9	161.9
51	41.2	32.8	49.2
86	64.3	51.5	77.3

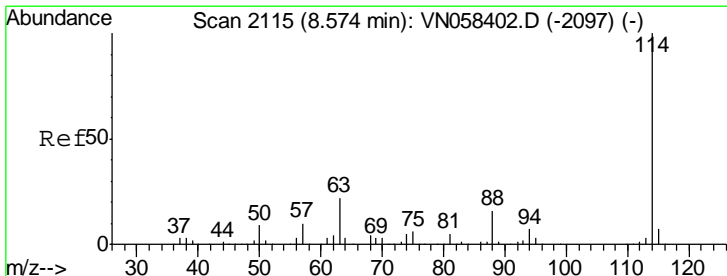
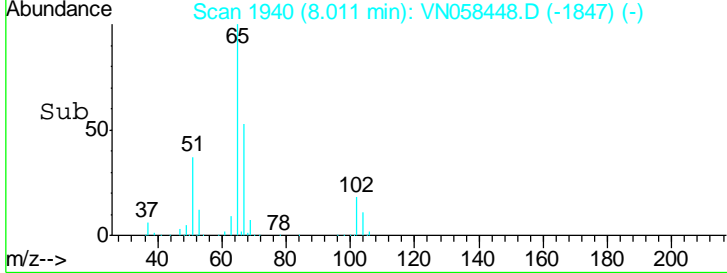
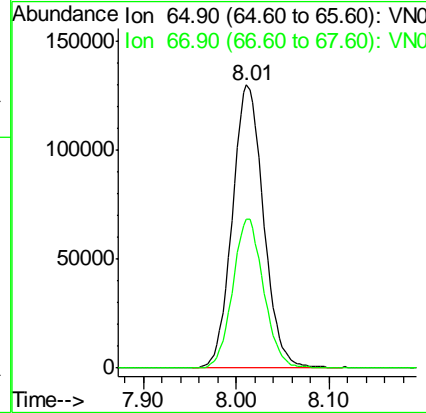
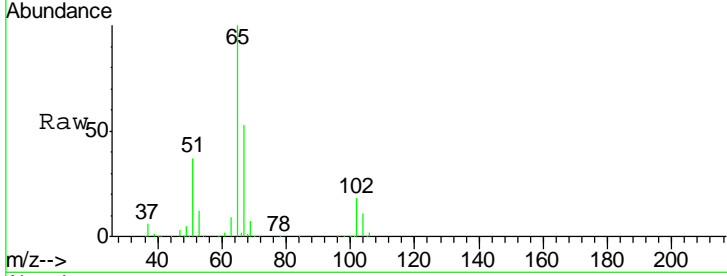




#33
 1,2-Dichloroethane-d4
 Concen: 49.251 ug/l
 RT: 8.01 min Scan# 1940
 Delta R.T. 0.00 min
 Lab File: VN058448.D
 Acq: 30 Sep 2019 19:58

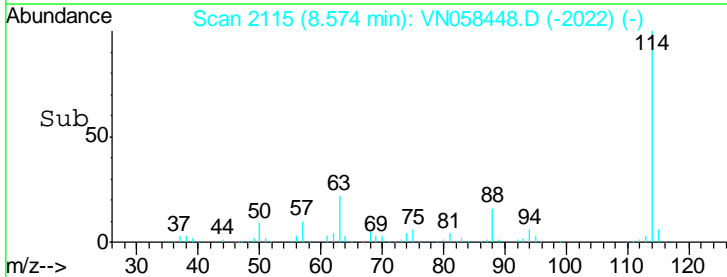
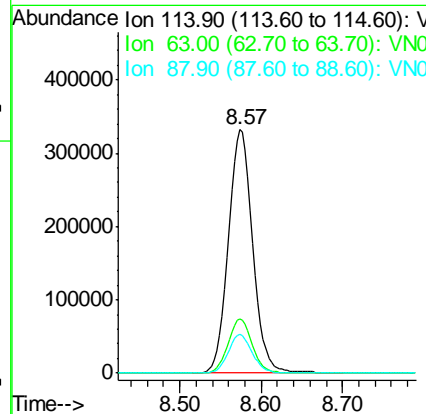
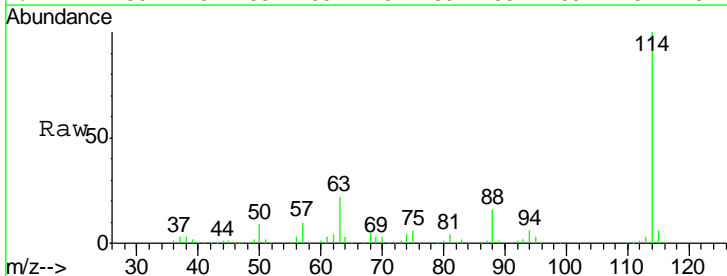
Instrument :
 MSVOA_N
ClientSampled :
 TP-1-COMP

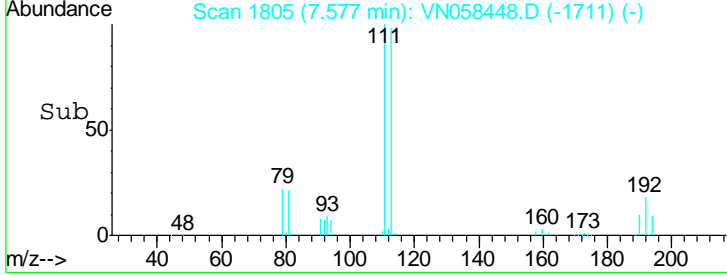
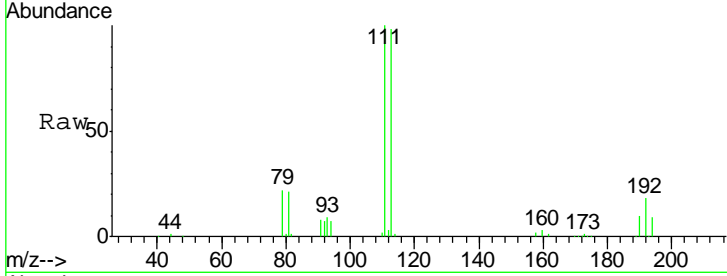
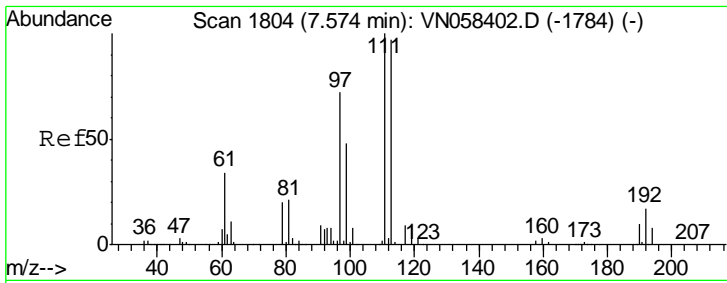
Tgt Ion: 65 Resp: 304036
 Ion Ratio Lower Upper
 65 100
 67 52.0 0.0 102.4



#34
 1,4-Difluorobenzene
 Concen: 50.000 ug/l
 RT: 8.57 min Scan# 2115
 Delta R.T. 0.00 min
 Lab File: VN058448.D
 Acq: 30 Sep 2019 19:58

Tgt Ion: 114 Resp: 700801
 Ion Ratio Lower Upper
 114 100
 63 22.2 0.0 45.0
 88 15.9 0.0 32.2

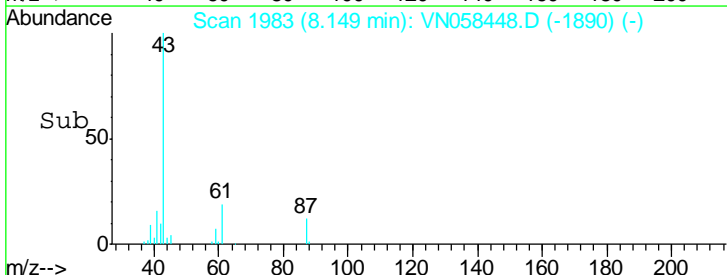
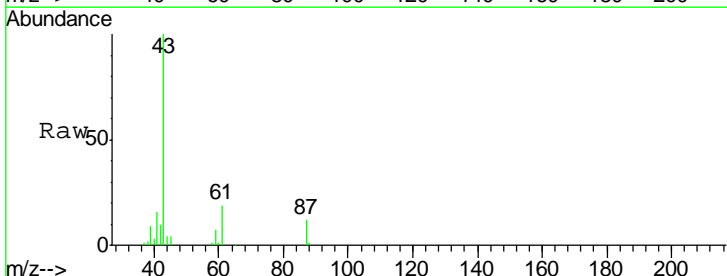
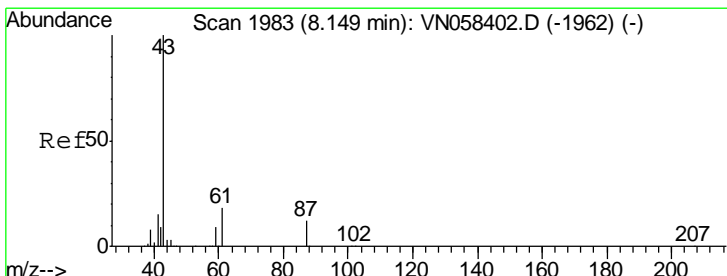
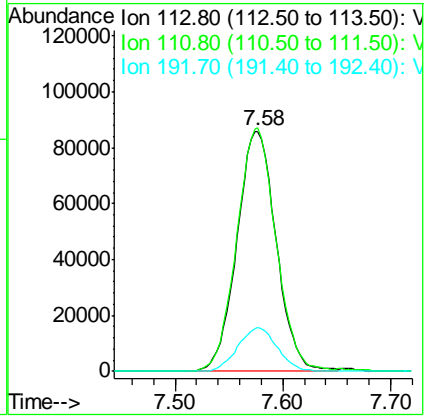




#35
 Dibromofluoromethane
 Concen: 50.581 ug/l
 RT: 7.58 min Scan# 1805
 Delta R.T. 0.00 min
 Lab File: VN058448.D
 Acq: 30 Sep 2019 19:58

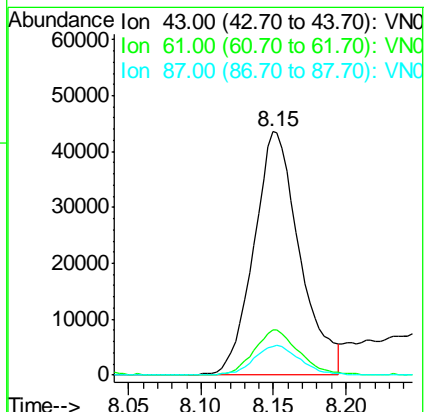
Instrument : MSVOA_N
 ClientSampled : TP-1-COMP

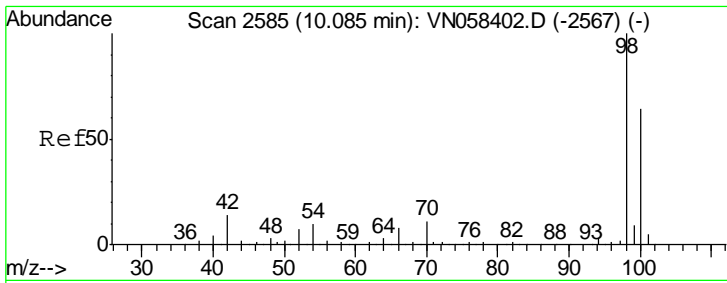
Tgt Ion	Resp	Lower	Upper
113	217251		
113	100		
111	101.3	83.4	125.2
192	18.2	14.9	22.3



#43
 Isopropyl Acetate
 Concen: 8.995 ug/l
 RT: 8.15 min Scan# 1983
 Delta R.T. 0.00 min
 Lab File: VN058448.D
 Acq: 30 Sep 2019 19:58

Tgt Ion	Resp	Lower	Upper
43	96101		
43	100		
61	18.2	14.8	22.2
87	12.1	9.7	14.5

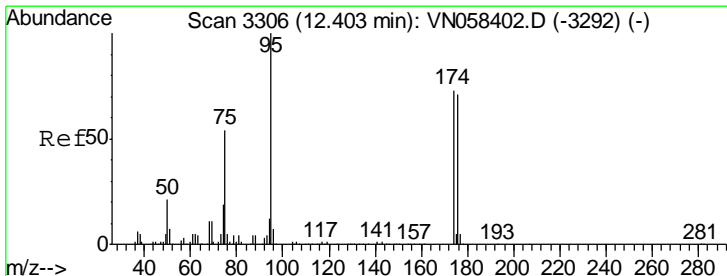
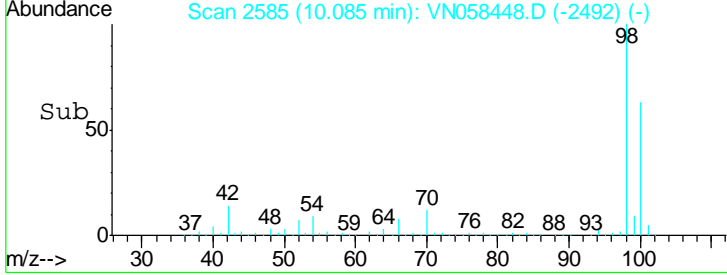
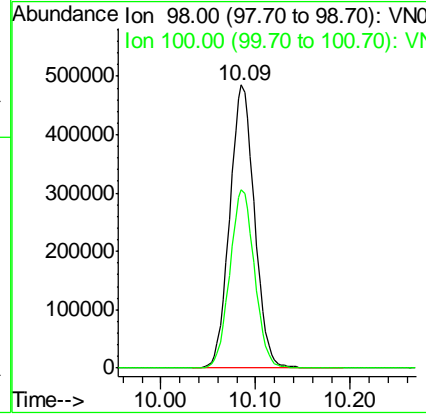
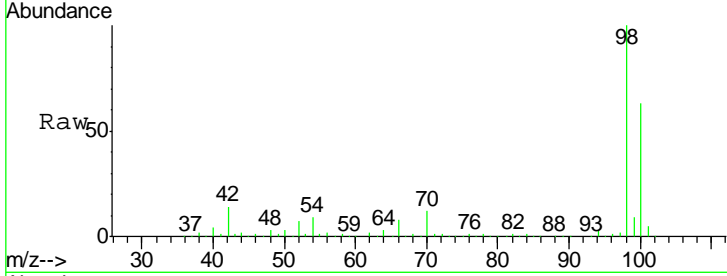




#50
 Toluene-d8
 Concen: 52.456 ug/l
 RT: 10.09 min Scan# 2585
 Delta R.T. 0.00 min
 Lab File: VN058448.D
 Acq: 30 Sep 2019 19:58

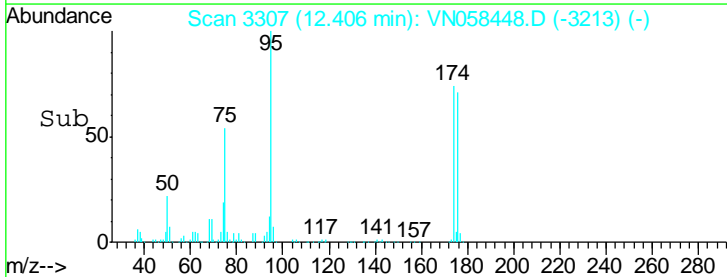
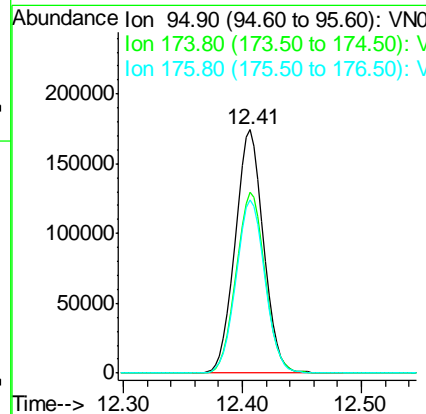
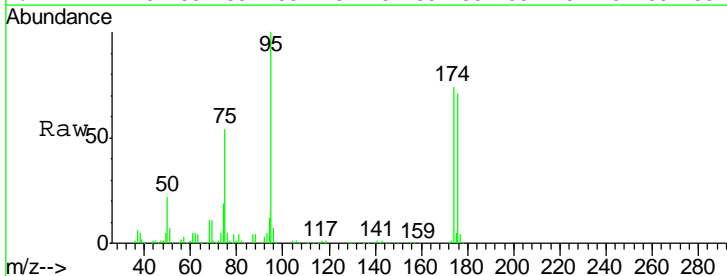
Instrument :
 MSVOA_N
 ClientSampled :
 TP-1-COMP

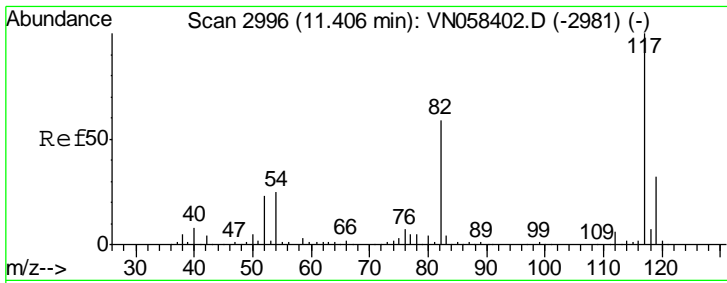
Tgt Ion: 98 Resp: 882614
 Ion Ratio Lower Upper
 98 100
 100 63.1 51.0 76.6



#62
 4-Bromofluorobenzene
 Concen: 47.277 ug/l
 RT: 12.41 min Scan# 3307
 Delta R.T. 0.00 min
 Lab File: VN058448.D
 Acq: 30 Sep 2019 19:58

Tgt Ion: 95 Resp: 287632
 Ion Ratio Lower Upper
 95 100
 174 75.6 0.0 150.6
 176 72.8 0.0 146.2

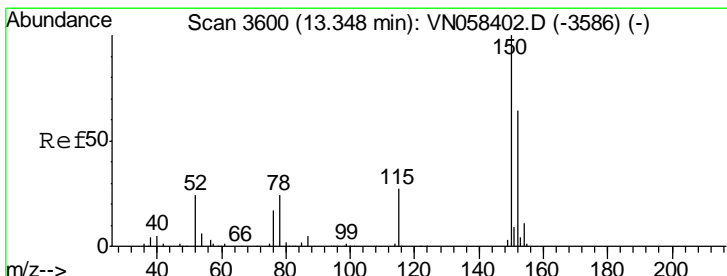
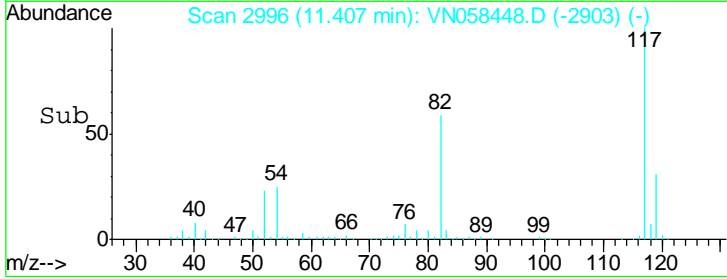
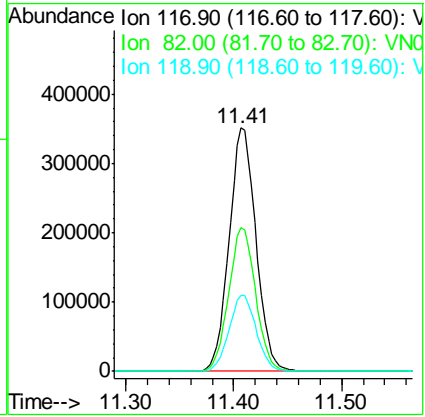
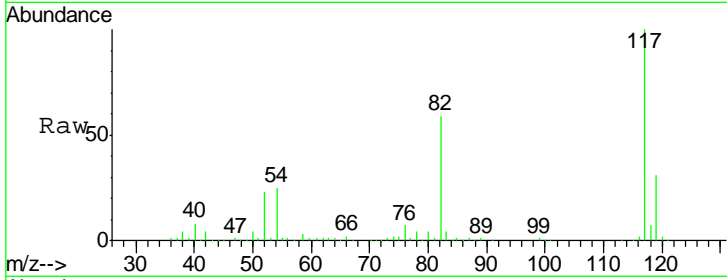




#63
 Chlorobenzene-d5
 Concen: 50.000 ug/l
 RT: 11.41 min Scan# 2996
 Delta R.T. 0.00 min
 Lab File: VN058448.D
 Acq: 30 Sep 2019 19:58

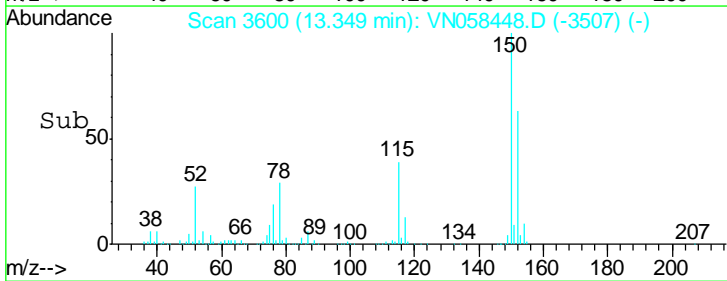
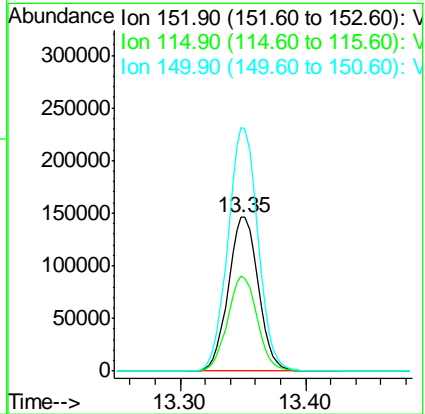
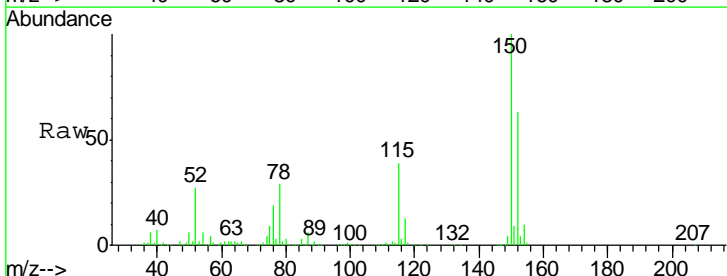
Instrument : MSVOA_N
 ClientSampled : TP-1-COMP

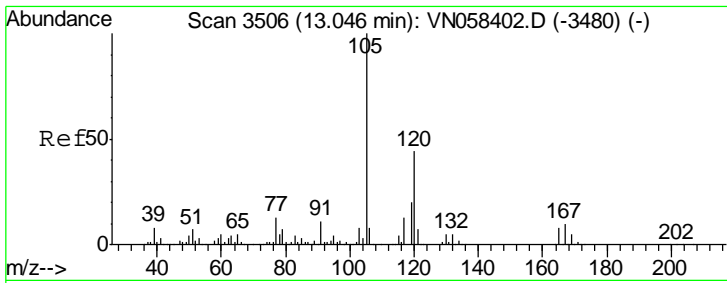
Tgt Ion	Resp	Lower	Upper
117	609814		
82	58.9	47.4	71.0
119	31.2	25.5	38.3



#72
 1,4-Dichlorobenzene-d4
 Concen: 50.000 ug/l
 RT: 13.35 min Scan# 3600
 Delta R.T. 0.00 min
 Lab File: VN058448.D
 Acq: 30 Sep 2019 19:58

Tgt Ion	Resp	Lower	Upper
152	243412		
115	60.7	30.0	90.0
150	158.0	0.0	348.2

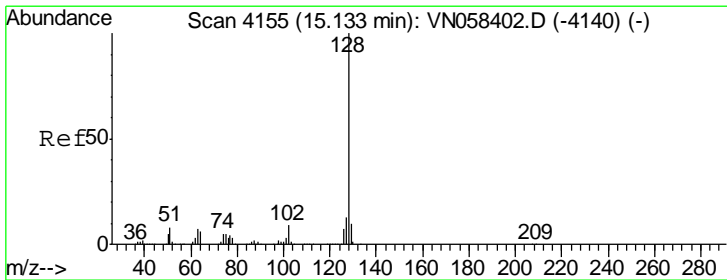
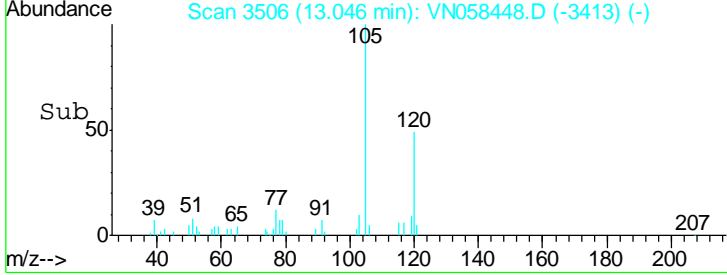
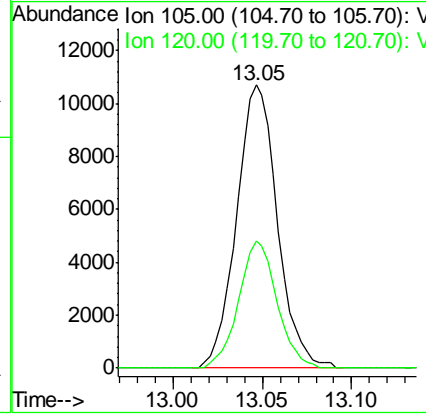
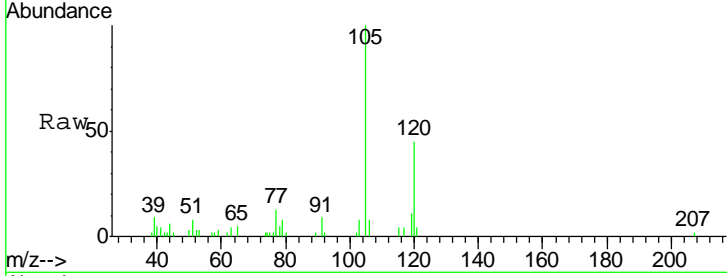




#84
 1,2,4-Trimethylbenzene
 Concen: 1.131 ug/l
 RT: 13.05 min Scan# 3506
 Delta R.T. 0.00 min
 Lab File: VN058448.D
 Acq: 30 Sep 2019 19:58

Instrument :
 MSVOA_N
 ClientSampled :
 TP-1-COMP

Tgt Ion:105 Resp: 17067
 Ion Ratio Lower Upper
 105 100
 120 42.1 21.7 65.1



#95
 Naphthalene
 Concen: 1.620 ug/l
 RT: 15.13 min Scan# 4155
 Delta R.T. 0.00 min
 Lab File: VN058448.D
 Acq: 30 Sep 2019 19:58

Tgt Ion:128 Resp: 19603
 Ion Ratio Lower Upper
 128 100
 127 13.6 10.2 15.4
 129 11.4 8.3 12.5

