

Data Path : Z:\voasrv\HPCHEM1\MSVOA_N\Data\VN093023\
 Data File : VN079385.D
 Acq On : 30 Sep 2023 14:34
 Operator : JC\MD
 Sample : PB155992ZHE#05
 Misc : 5.0mL/MSVOA_N/WATER
 ALS Vial : 11 Sample Multiplier: 1

Instrument :
 MSVOA_N
 ClientSampleId :

Quant Time: Oct 02 01:55:35 2023
 Quant Method : Z:\voasrv\HPCHEM1\MSVOA_N\methods\82N091123W.M
 Quant Title : SW846 8260
 QLast Update : Tue Sep 12 05:05:24 2023
 Response via : Initial Calibration

Compound	R.T.	QIon	Response	Conc	Units	Dev(Min)

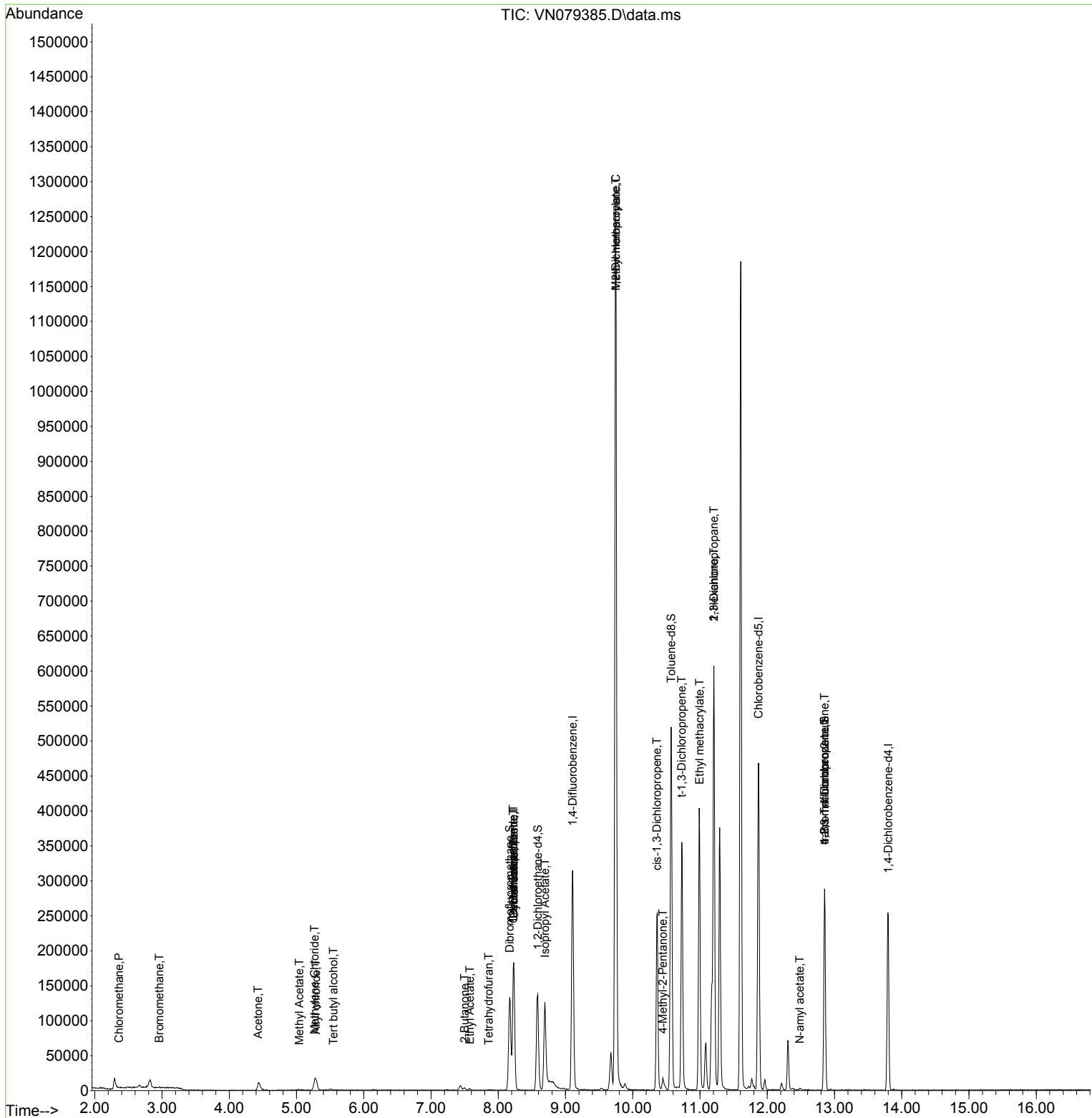
Internal Standards						
1) Pentafluorobenzene	8.230	168	127260	50.000	ug/l	0.00
34) 1,4-Difluorobenzene	9.106	114	260834	50.000	ug/l	0.00
63) Chlorobenzene-d5	11.871	117	264796	50.000	ug/l	0.00
72) 1,4-Dichlorobenzene-d4	13.800	152	66809	50.000	ug/l	0.00
System Monitoring Compounds						
33) 1,2-Dichloroethane-d4	8.588	65	113598	66.127	ug/l	0.00
Spiked Amount	50.000	Range 74 - 125	Recovery	=	132.260%#	
35) Dibromofluoromethane	8.171	113	95168	54.851	ug/l	0.00
Spiked Amount	50.000	Range 75 - 124	Recovery	=	109.700%	
50) Toluene-d8	10.571	98	350548	55.025	ug/l	0.00
Spiked Amount	50.000	Range 86 - 113	Recovery	=	110.040%	
62) 4-Bromofluorobenzene	12.853	95	95507	46.998	ug/l	0.00
Spiked Amount	50.000	Range 83 - 123	Recovery	=	94.000%	
Target Compounds						
						Qvalue
3) Chloromethane	2.359	50	617	0.373	ug/l #	42
5) Bromomethane	2.959	94	337	0.326	ug/l	98
6) Chloroethane	3.118	64	175	Below Cal	#	43
11) Tert butyl alcohol	5.547	59	163	0.514	ug/l #	72
14) Allyl chloride	5.289	41	456	0.211	ug/l #	19
16) Acetone	4.430	43	21232	29.101	ug/l #	81
18) Methyl Acetate	5.042	43	2302	0.768	ug/l #	54
20) Methylene Chloride	5.271	84	13722	7.729	ug/l #	87
25) 2-Butanone	7.500	43	5487	5.183	ug/l #	85
29) Tetrahydrofuran	7.859	42	426	0.632	ug/l #	20
31) Cyclohexane	8.230	56	3853	1.536	ug/l #	43
36) 1,1-Dichloropropene	8.224	75	11355	4.246	ug/l #	49
37) Ethyl Acetate	7.577	43	3159	1.184	ug/l #	66
38) Carbon Tetrachloride	8.224	117	14840	5.362	ug/l #	17
43) Isopropyl Acetate	8.694	43	146085	33.564	ug/l #	76
45) 1,2-Dichloropropane	9.747	63	1581	0.778	ug/l #	45
48) Methyl methacrylate	9.747	41	121883	62.519	ug/l #	29
51) 4-Methyl-2-Pentanone	10.447	43	14164	5.606	ug/l #	81
53) t-1,3-Dichloropropene	10.729	75	783	0.263	ug/l #	35
54) cis-1,3-Dichloropropene	10.359	75	43578	13.678	ug/l #	71
56) Ethyl methacrylate	10.994	69	2452	0.880	ug/l #	1
57) 1,3-Dichloropropane	11.206	76	5951	1.744	ug/l #	42
59) 2-Hexanone	11.206	43	74843	40.899	ug/l #	50
74) N-amyl acetate	12.482	43	1450	0.629	ug/l #	39
76) 1,2,3-Trichloropropane	12.853	75	51756	28.744	ug/l #	1
81) trans-1,4-Dichloro-2-b...	12.853	75	51756	79.023	ug/l #	15

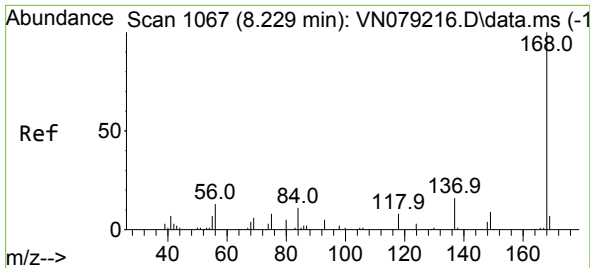
(#) = qualifier out of range (m) = manual integration (+) = signals summed

Data Path : Z:\voasrv\HPCHEM1\MSVOA_N\Data\VN093023\
 Data File : VN079385.D
 Acq On : 30 Sep 2023 14:34
 Operator : JC\MD
 Sample : PB155992ZHE#05
 Misc : 5.0mL/MSVOA_N/WATER
 ALS Vial : 11 Sample Multiplier: 1

Instrument :
 MSVOA_N
 ClientSampleId :

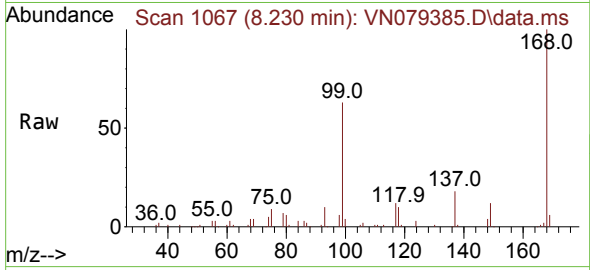
Quant Time: Oct 02 01:55:35 2023
 Quant Method : Z:\voasrv\HPCHEM1\MSVOA_N\methods\82N091123W.M
 Quant Title : SW846 8260
 QLast Update : Tue Sep 12 05:05:24 2023
 Response via : Initial Calibration



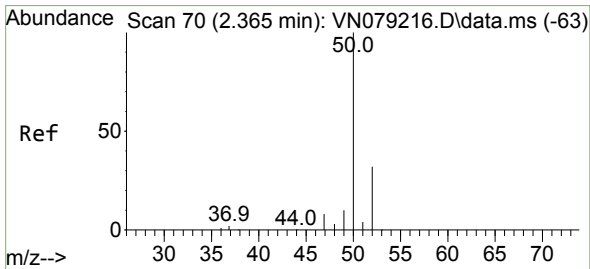
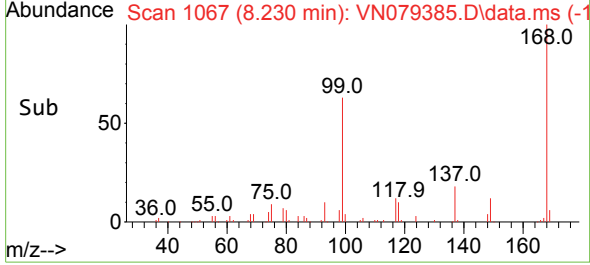
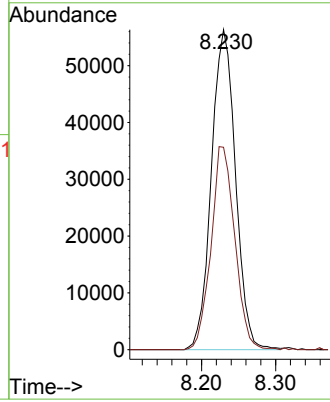


#1
 Pentafluorobenzene
 Concen: 50.000 ug/l
 RT: 8.230 min Scan# 10
 Delta R.T. -0.000 min
 Lab File: VN079385.D
 Acq: 30 Sep 2023 14:34

Instrument :
 MSVOA_N
 ClientSampleId :

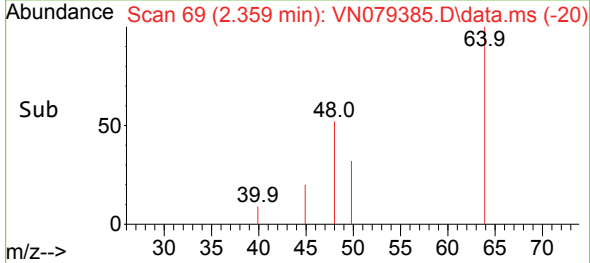
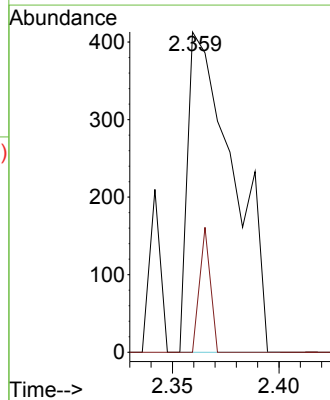
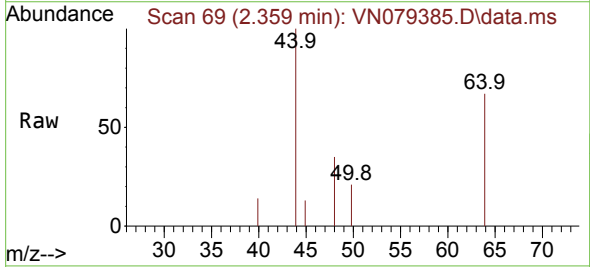


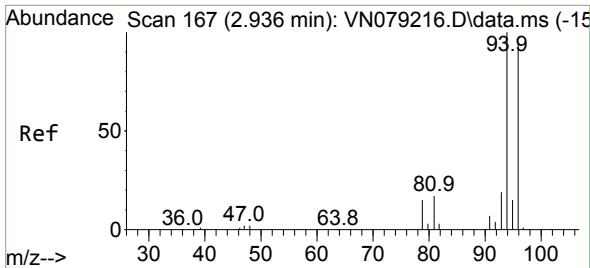
Tgt Ion:168 Resp: 127260
 Ion Ratio Lower Upper
 168 100
 99 63.2 53.0 79.6



#3
 Chloromethane
 Concen: 0.373 ug/l
 RT: 2.359 min Scan# 69
 Delta R.T. -0.012 min
 Lab File: VN079385.D
 Acq: 30 Sep 2023 14:34

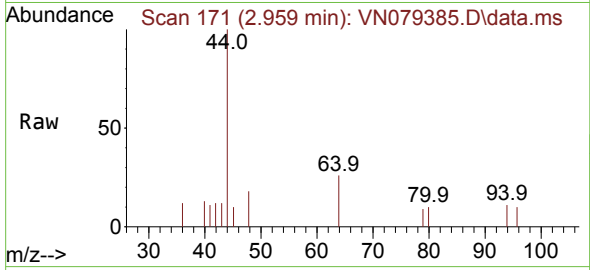
Tgt Ion: 50 Resp: 617
 Ion Ratio Lower Upper
 50 100
 52 0.0 26.5 39.7#



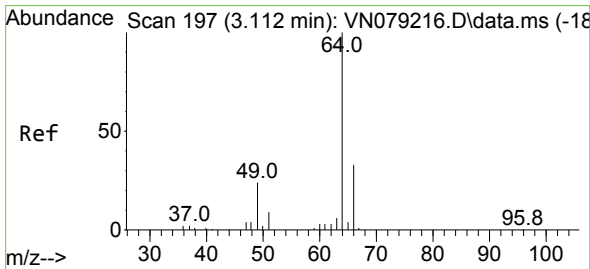
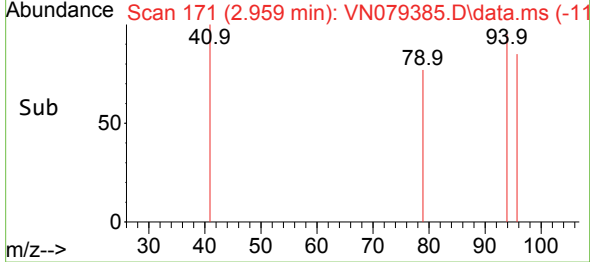
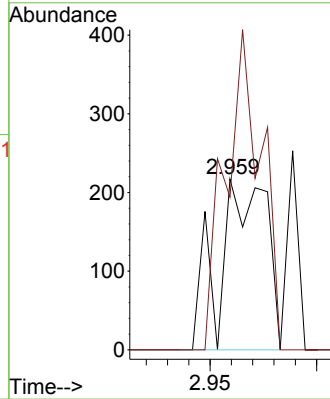


#5
 Bromomethane
 Concen: 0.326 ug/l
 RT: 2.959 min Scan# 11
 Delta R.T. 0.011 min
 Lab File: VN079385.D
 Acq: 30 Sep 2023 14:34

Instrument :
 MSVOA_N
 ClientSampleId :

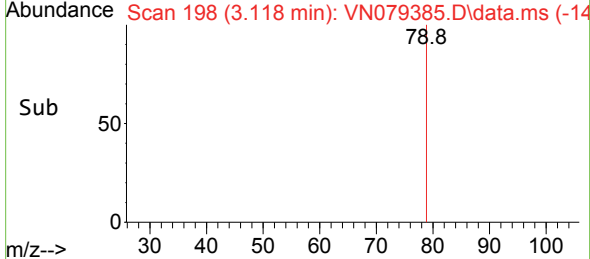
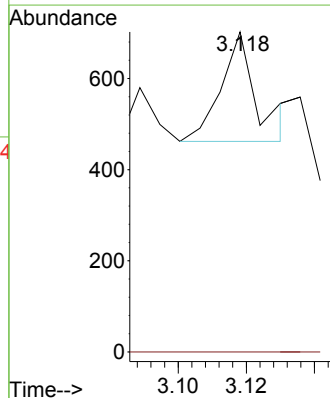
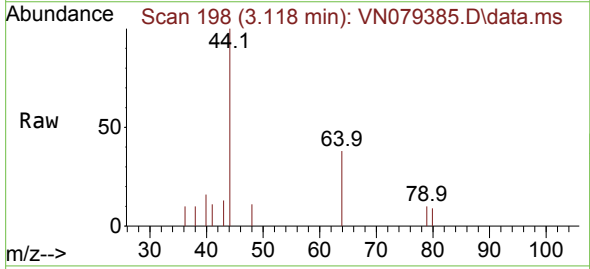


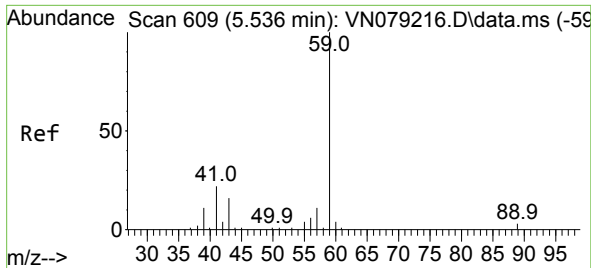
Tgt Ion: 94 Resp: 337
 Ion Ratio Lower Upper
 94 100
 96 89.4 73.1 109.7



#6
 Chloroethane
 Concen: Below Cal
 RT: 3.118 min Scan# 198
 Delta R.T. 0.000 min
 Lab File: VN079385.D
 Acq: 30 Sep 2023 14:34

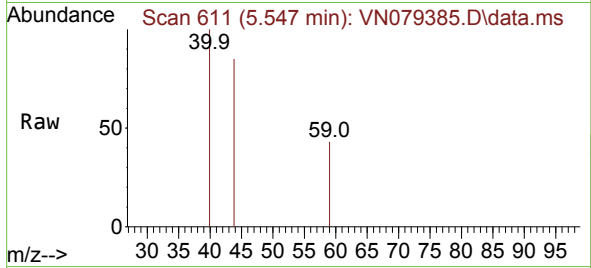
Tgt Ion: 64 Resp: 175
 Ion Ratio Lower Upper
 64 100
 66 0.0 25.4 38.2#



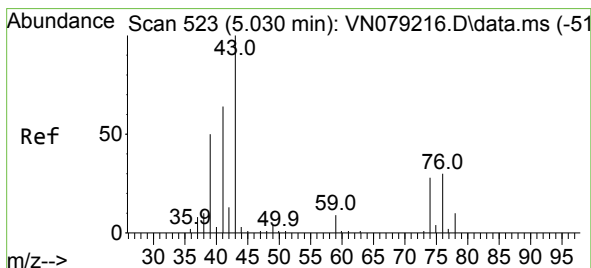
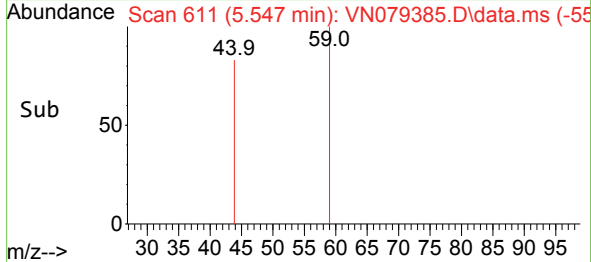
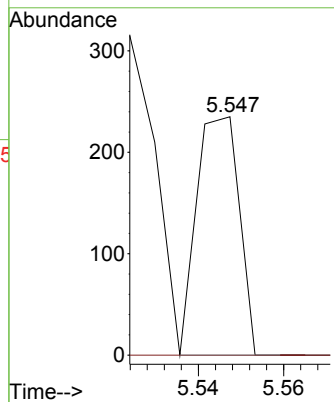


#11
 Tert butyl alcohol
 Concen: 0.514 ug/l
 RT: 5.547 min Scan# 611
 Delta R.T. 0.005 min
 Lab File: VN079385.D
 Acq: 30 Sep 2023 14:34

Instrument :
 MSVOA_N
 ClientSampleId :

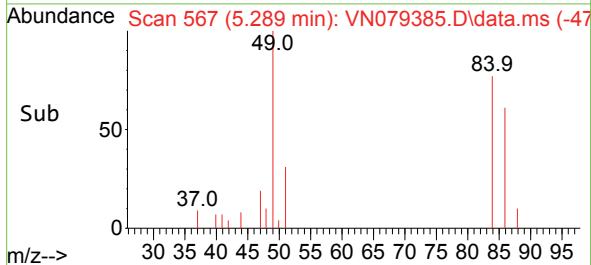
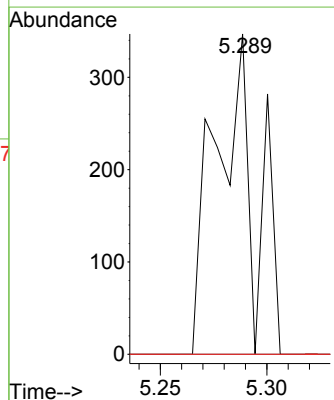
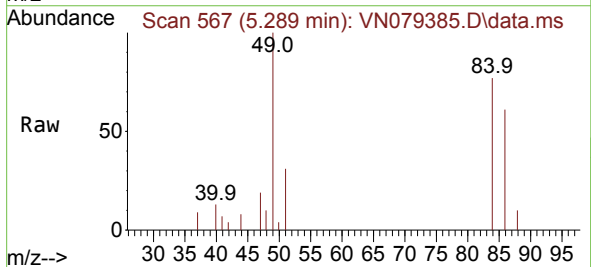


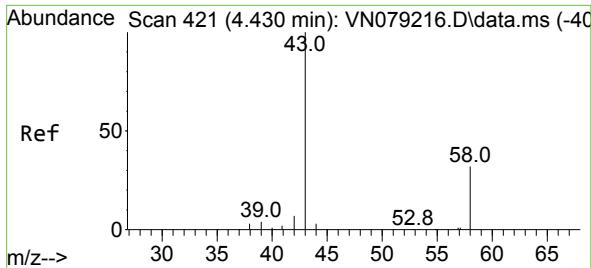
Tgt Ion: 59 Resp: 163
 Ion Ratio Lower Upper
 59 100
 57 0.0 8.2 12.4#



#14
 Allyl chloride
 Concen: 0.211 ug/l
 RT: 5.289 min Scan# 567
 Delta R.T. 0.259 min
 Lab File: VN079385.D
 Acq: 30 Sep 2023 14:34

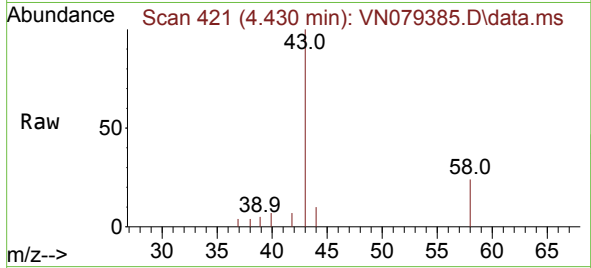
Tgt Ion: 41 Resp: 456
 Ion Ratio Lower Upper
 41 100
 39 0.0 58.8 88.2#
 76 0.0 39.1 58.7#



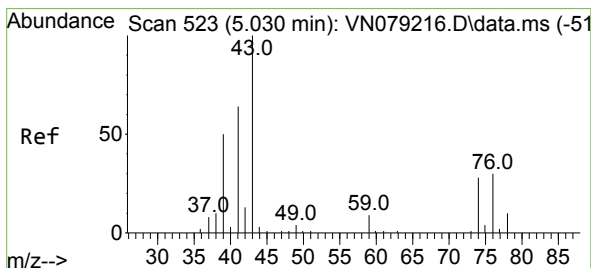
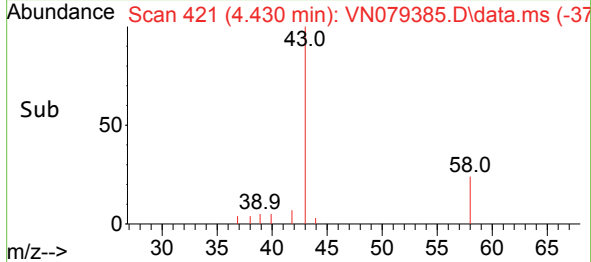
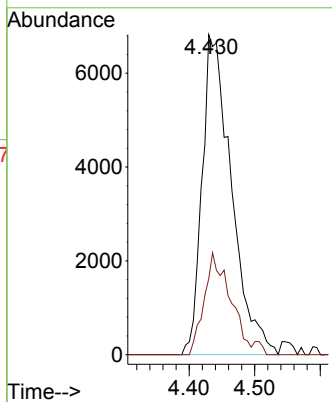


#16
 Acetone
 Concen: 29.101 ug/l
 RT: 4.430 min Scan# 41
 Delta R.T. -0.012 min
 Lab File: VN079385.D
 Acq: 30 Sep 2023 14:34

Instrument : MSVOA_N
 ClientSampleId :

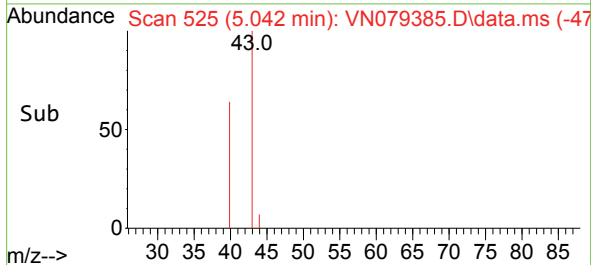
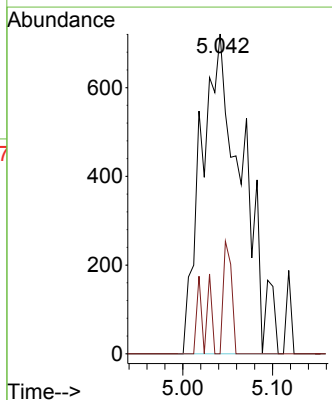
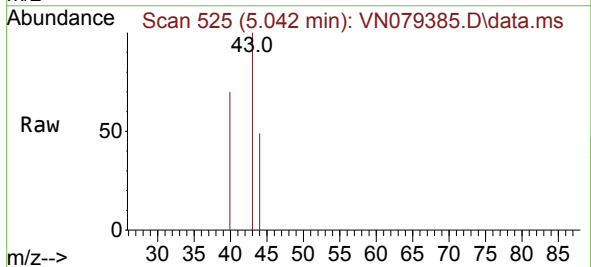


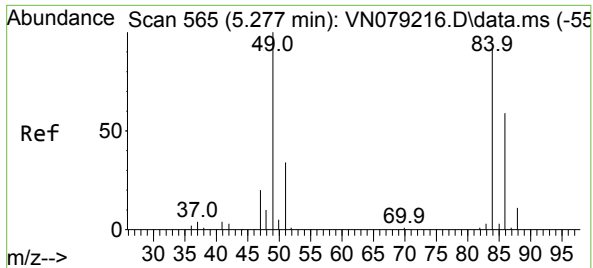
Tgt Ion: 43 Resp: 21232
 Ion Ratio Lower Upper
 43 100
 58 23.7 28.0 42.0#



#18
 Methyl Acetate
 Concen: 0.768 ug/l
 RT: 5.042 min Scan# 525
 Delta R.T. -0.000 min
 Lab File: VN079385.D
 Acq: 30 Sep 2023 14:34

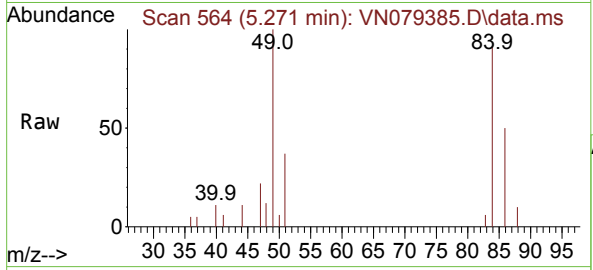
Tgt Ion: 43 Resp: 2302
 Ion Ratio Lower Upper
 43 100
 74 7.0 26.2 39.4#





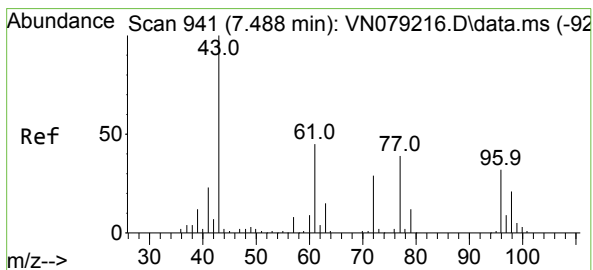
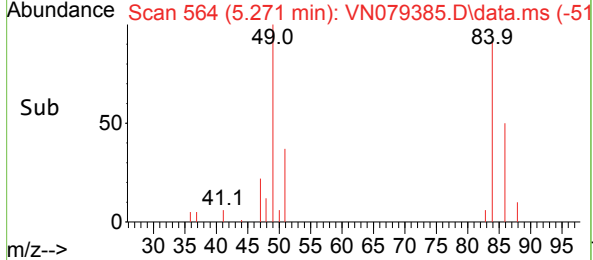
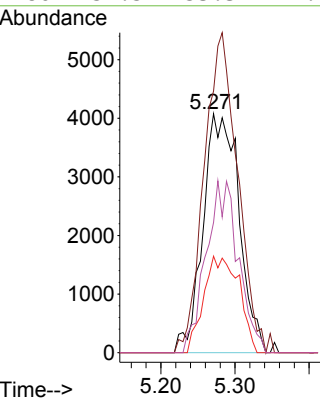
#20
 Methylene Chloride
 Concen: 7.729 ug/l
 RT: 5.271 min Scan# 50
 Delta R.T. -0.012 min
 Lab File: VN079385.D
 Acq: 30 Sep 2023 14:34

Instrument : MSVOA_N
 ClientSampleId :



Tgt Ion: 84 Resp: 13722

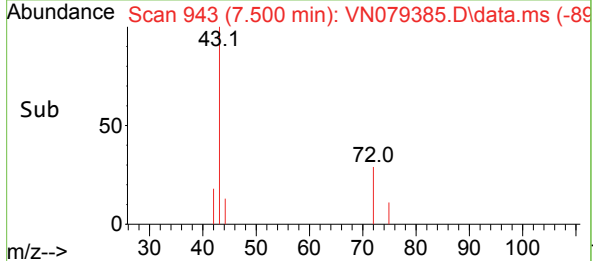
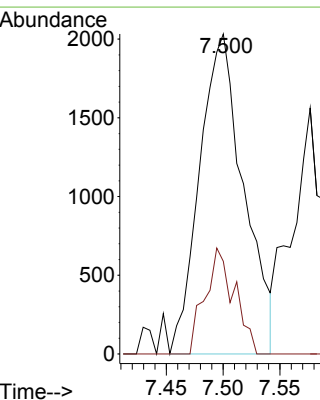
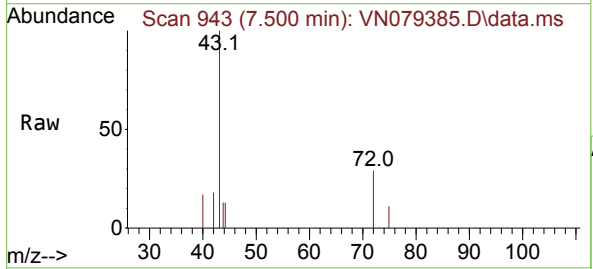
Ion	Ratio	Lower	Upper
84	100		
49	109.5	79.7	119.5
51	40.4	25.2	37.8#
86	54.5	53.3	79.9

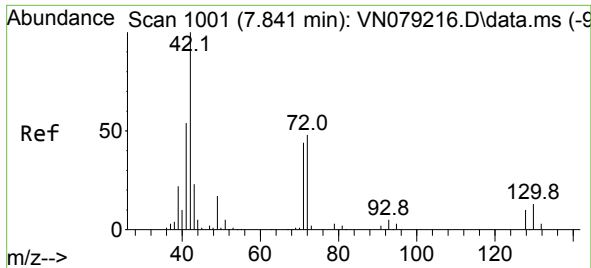


#25
 2-Butanone
 Concen: 5.183 ug/l
 RT: 7.500 min Scan# 943
 Delta R.T. 0.006 min
 Lab File: VN079385.D
 Acq: 30 Sep 2023 14:34

Tgt Ion: 43 Resp: 5487

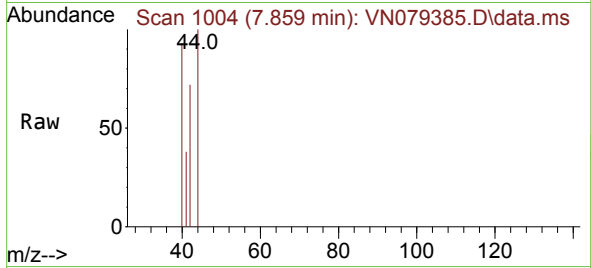
Ion	Ratio	Lower	Upper
43	100		
72	29.0	30.2	45.2#





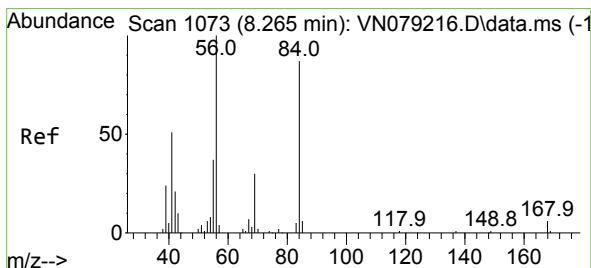
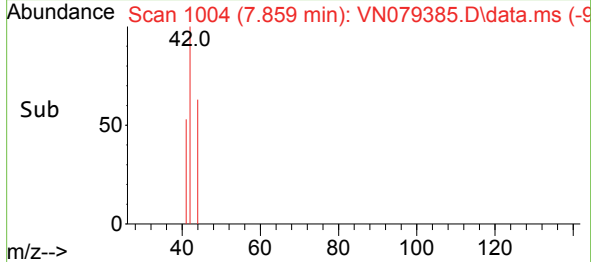
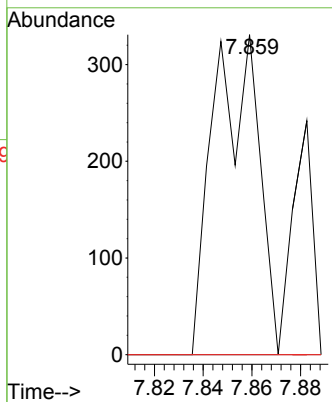
#29
 Tetrahydrofuran
 Concen: 0.632 ug/l
 RT: 7.859 min Scan# 1004
 Delta R.T. 0.012 min
 Lab File: VN079385.D
 Acq: 30 Sep 2023 14:34

Instrument : MSVOA_N
 ClientSampleId :



Tgt Ion: 42 Resp: 426

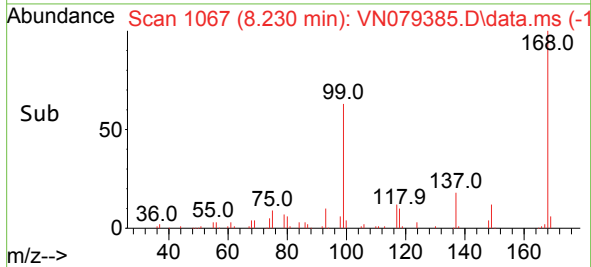
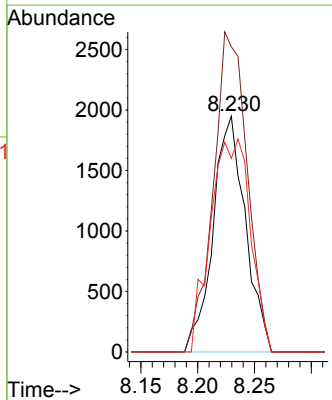
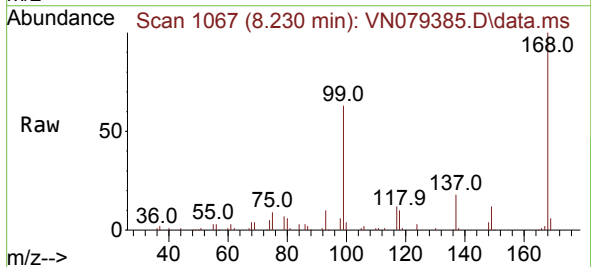
Ion	Ratio	Lower	Upper
42	100		
72	0.0	49.8	74.6#
71	0.0	47.4	71.2#

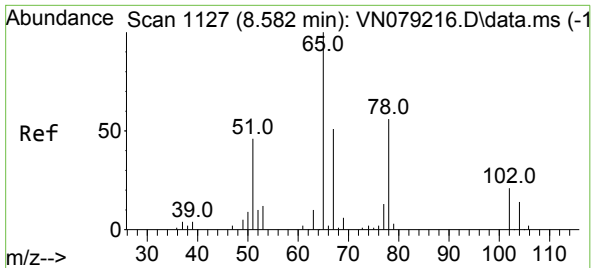


#31
 Cyclohexane
 Concen: 1.536 ug/l
 RT: 8.230 min Scan# 1067
 Delta R.T. -0.035 min
 Lab File: VN079385.D
 Acq: 30 Sep 2023 14:34

Tgt Ion: 56 Resp: 3853

Ion	Ratio	Lower	Upper
56	100		
69	129.3	26.8	40.2#
84	82.1	81.8	122.6

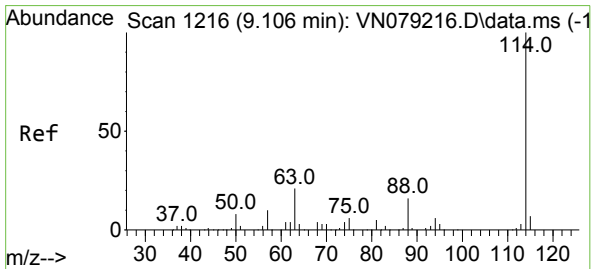
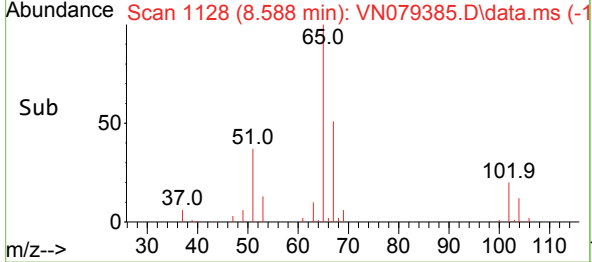
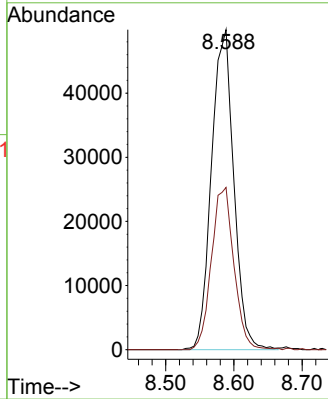
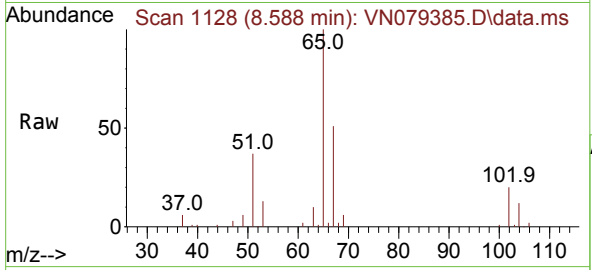




#33
 1,2-Dichloroethane-d4
 Concen: 66.127 ug/l
 RT: 8.588 min Scan# 1127
 Delta R.T. 0.005 min
 Lab File: VN079385.D
 Acq: 30 Sep 2023 14:34

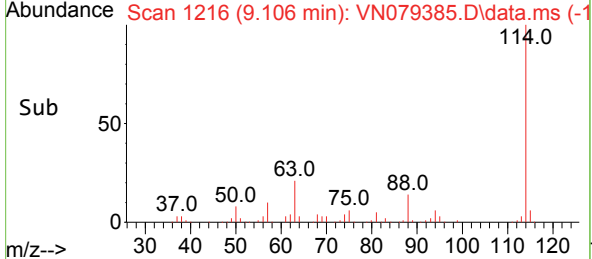
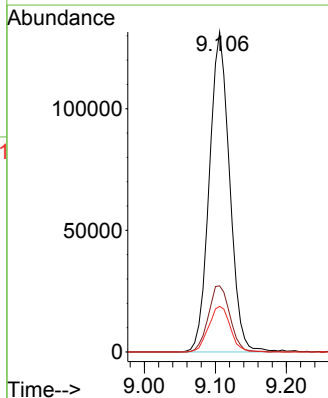
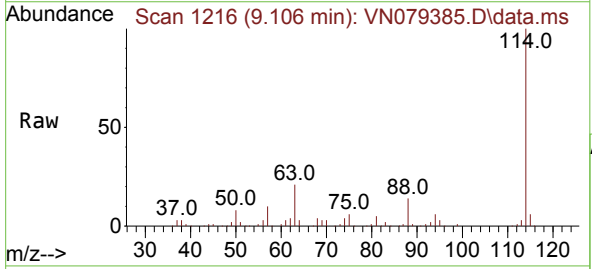
Instrument : MSVOA_N
 ClientSampleId :

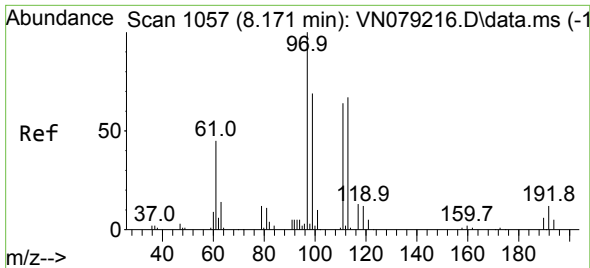
Tgt Ion: 65 Resp: 113598
 Ion Ratio Lower Upper
 65 100
 67 51.1 0.0 106.6



#34
 1,4-Difluorobenzene
 Concen: 50.000 ug/l
 RT: 9.106 min Scan# 1216
 Delta R.T. -0.006 min
 Lab File: VN079385.D
 Acq: 30 Sep 2023 14:34

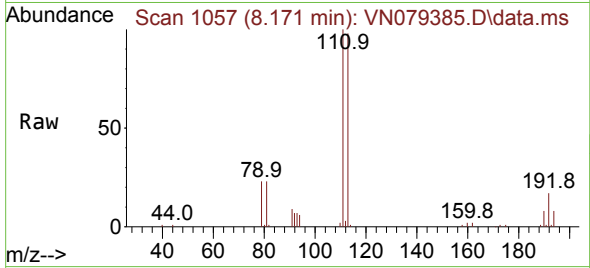
Tgt Ion:114 Resp: 260834
 Ion Ratio Lower Upper
 114 100
 63 20.7 0.0 36.4
 88 14.3 0.0 30.6



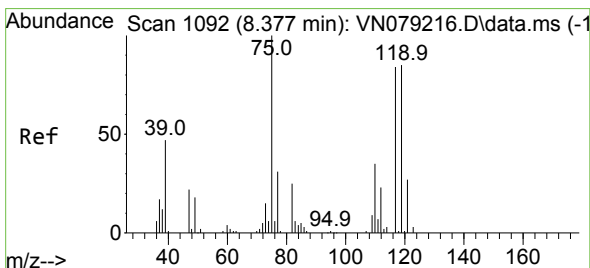
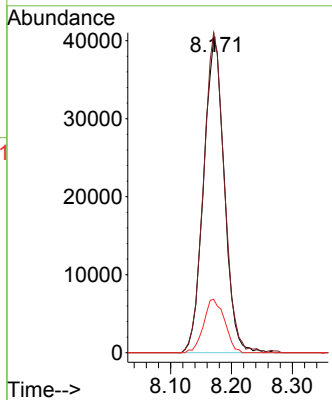
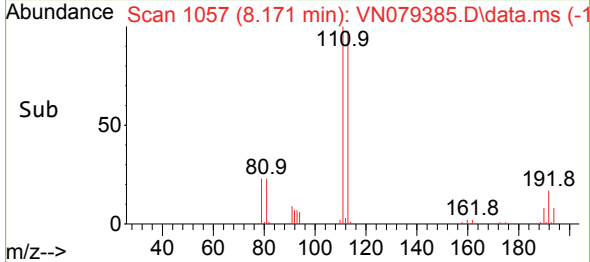


#35
 Dibromofluoromethane
 Concen: 54.851 ug/l
 RT: 8.171 min Scan# 1057
 Delta R.T. -0.000 min
 Lab File: VN079385.D
 Acq: 30 Sep 2023 14:34

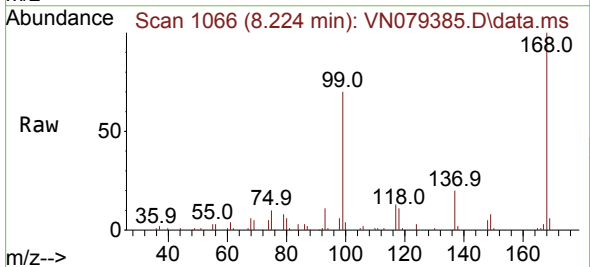
Instrument : MSVOA_N
 ClientSampleId :



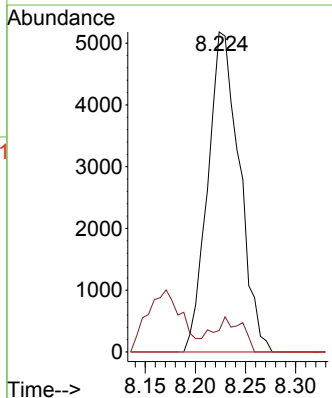
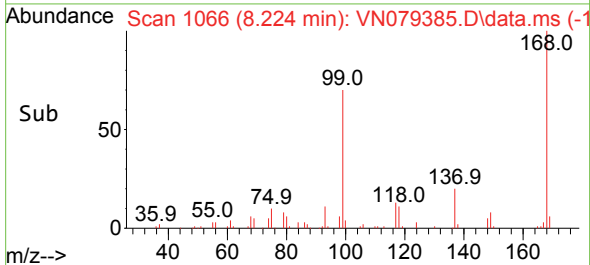
Tgt Ion:113 Resp: 95168
 Ion Ratio Lower Upper
 113 100
 111 101.6 82.6 123.8
 192 17.2 12.7 19.1

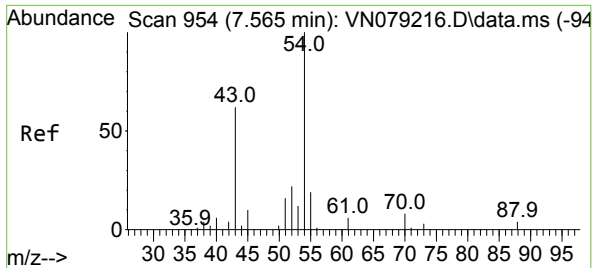


#36
 1,1-Dichloropropene
 Concen: 4.246 ug/l
 RT: 8.224 min Scan# 1066
 Delta R.T. -0.153 min
 Lab File: VN079385.D
 Acq: 30 Sep 2023 14:34



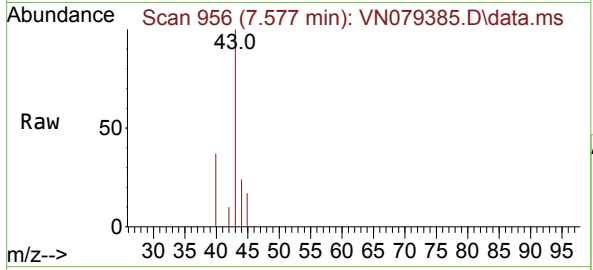
Tgt Ion: 75 Resp: 11355
 Ion Ratio Lower Upper
 75 100
 110 10.4 19.1 57.3#
 77 0.0 25.0 37.4#





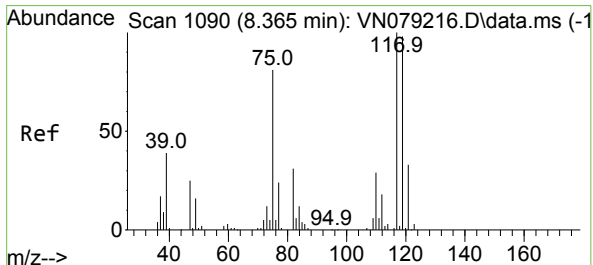
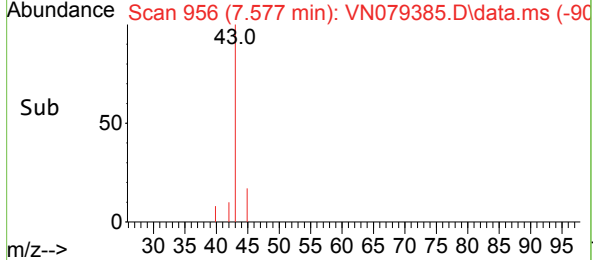
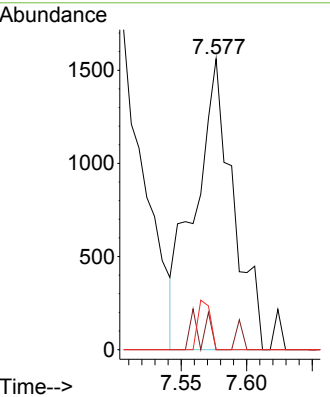
#37
 Ethyl Acetate
 Concen: 1.184 ug/l
 RT: 7.577 min Scan# 911
 Delta R.T. 0.006 min
 Lab File: VN079385.D
 Acq: 30 Sep 2023 14:34

Instrument : MSVOA_N
 ClientSampleId :

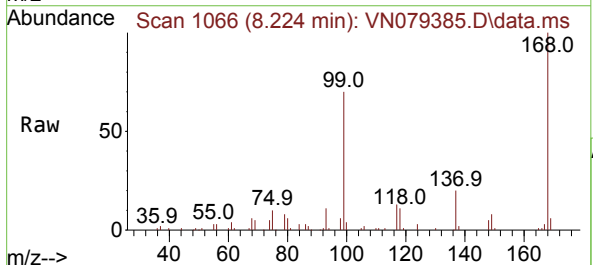


Tgt Ion: 43 Resp: 3159

Ion	Ratio	Lower	Upper
43	100		
61	1.8	13.2	19.8#
70	0.0	11.3	16.9#

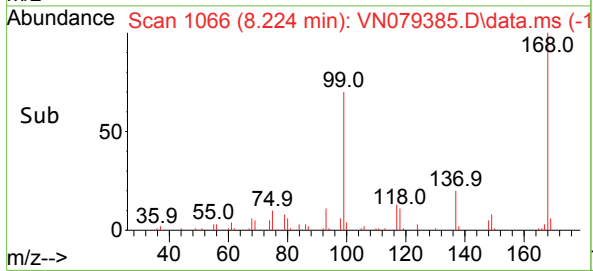
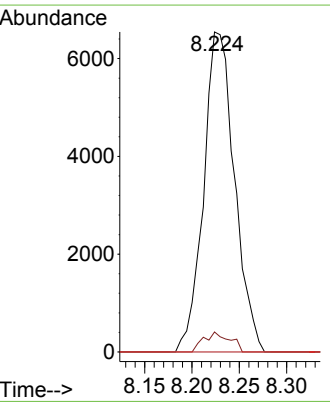


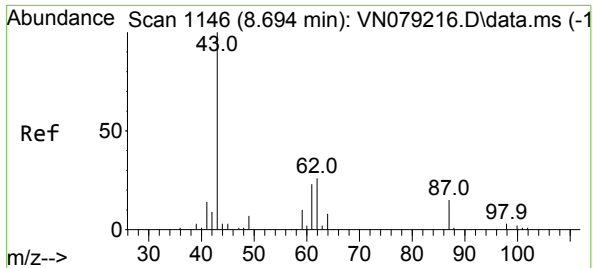
#38
 Carbon Tetrachloride
 Concen: 5.362 ug/l
 RT: 8.224 min Scan# 1066
 Delta R.T. -0.147 min
 Lab File: VN079385.D
 Acq: 30 Sep 2023 14:34



Tgt Ion: 117 Resp: 14840

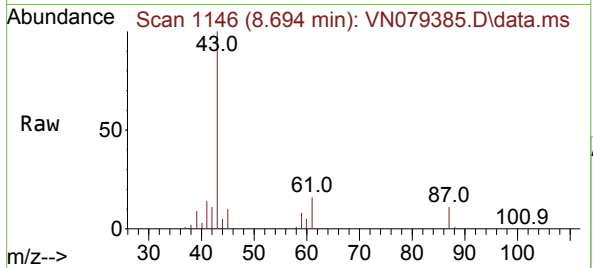
Ion	Ratio	Lower	Upper
117	100		
119	6.3	77.3	115.9#
121	0.0	23.3	34.9#



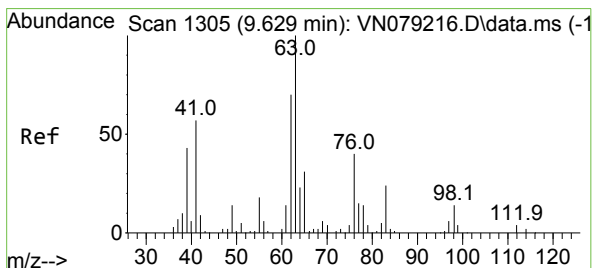
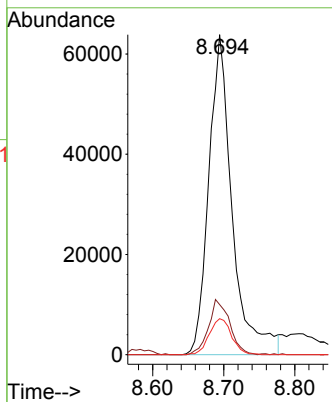
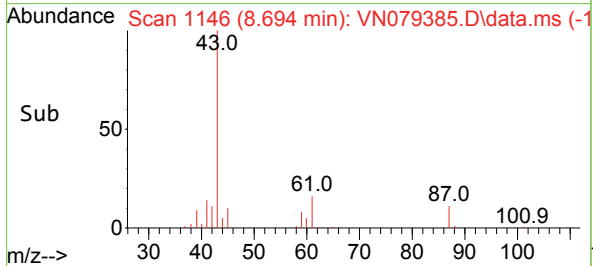


#43
 Isopropyl Acetate
 Concen: 33.564 ug/l
 RT: 8.694 min Scan# 1146
 Delta R.T. 0.000 min
 Lab File: VN079385.D
 Acq: 30 Sep 2023 14:34

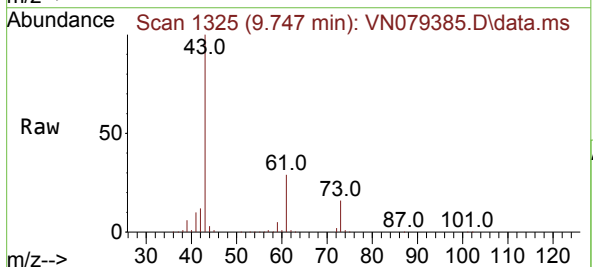
Instrument :
 MSVOA_N
 ClientSampleId :



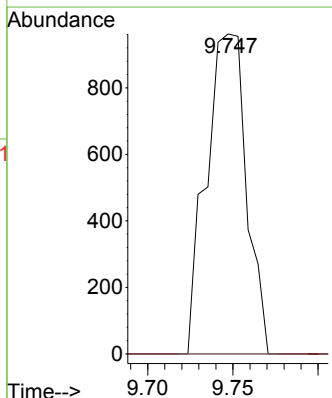
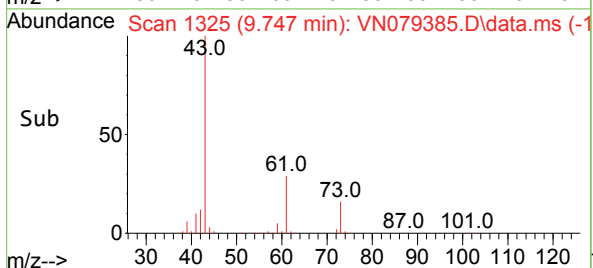
Tgt Ion: 43 Resp: 146085
 Ion Ratio Lower Upper
 43 100
 61 15.6 24.7 37.1#
 87 10.7 14.6 21.8#

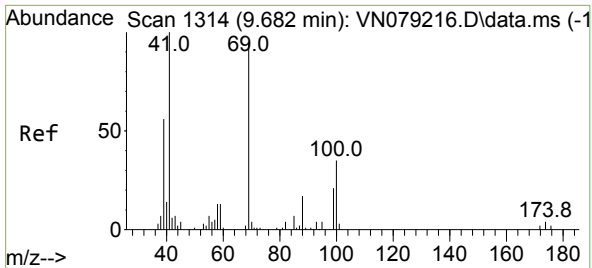


#45
 1,2-Dichloropropane
 Concen: 0.778 ug/l
 RT: 9.747 min Scan# 1325
 Delta R.T. 0.123 min
 Lab File: VN079385.D
 Acq: 30 Sep 2023 14:34



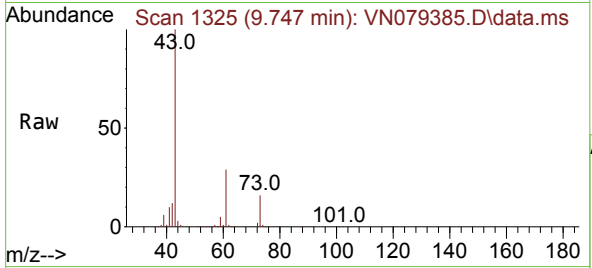
Tgt Ion: 63 Resp: 1581
 Ion Ratio Lower Upper
 63 100
 65 0.0 23.9 35.9#



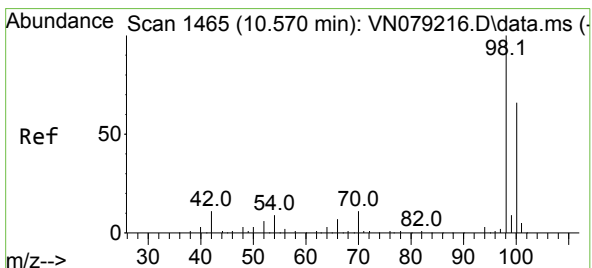
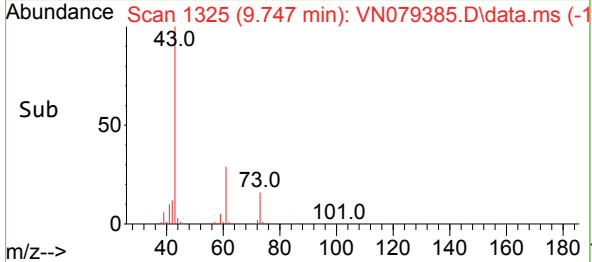
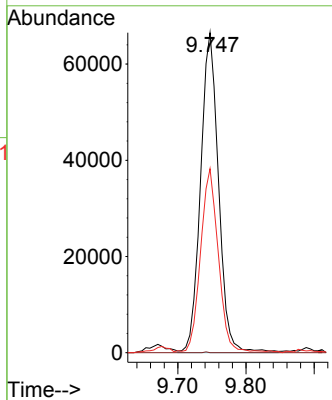


#48
 Methyl methacrylate
 Concen: 62.519 ug/l
 RT: 9.747 min Scan# 11
 Delta R.T. 0.059 min
 Lab File: VN079385.D
 Acq: 30 Sep 2023 14:34

Instrument :
 MSVOA_N
 ClientSampleId :

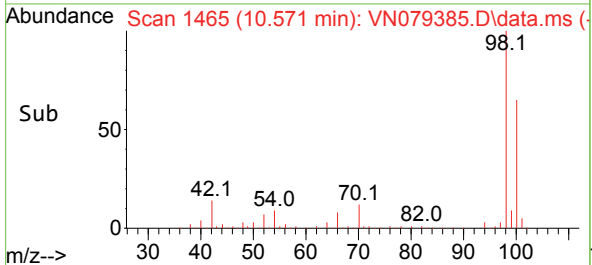
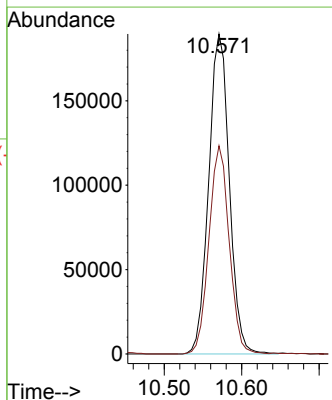
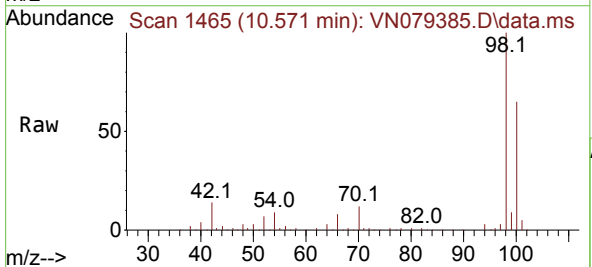


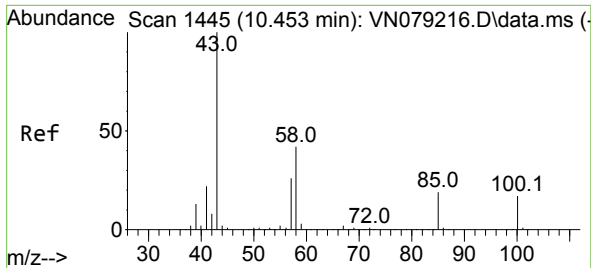
Tgt Ion: 41 Resp: 121883
 Ion Ratio Lower Upper
 41 100
 69 0.0 90.4 135.6#
 39 56.9 54.6 81.8



#50
 Toluene-d8
 Concen: 55.025 ug/l
 RT: 10.571 min Scan# 1465
 Delta R.T. -0.000 min
 Lab File: VN079385.D
 Acq: 30 Sep 2023 14:34

Tgt Ion: 98 Resp: 350548
 Ion Ratio Lower Upper
 98 100
 100 63.9 52.0 78.0

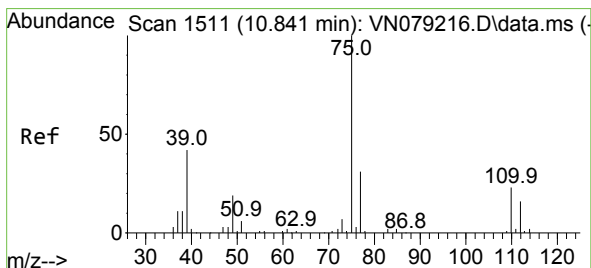
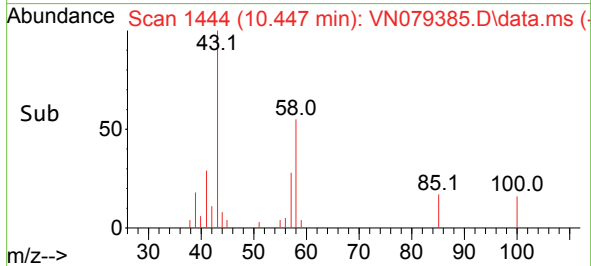
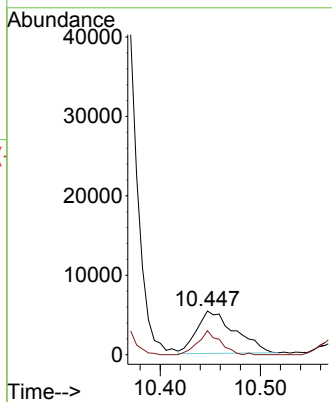
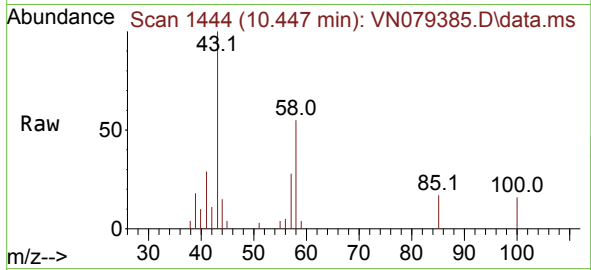




#51
 4-Methyl-2-Pentanone
 Concen: 5.606 ug/l
 RT: 10.447 min Scan# 14
 Delta R.T. -0.006 min
 Lab File: VN079385.D
 Acq: 30 Sep 2023 14:34

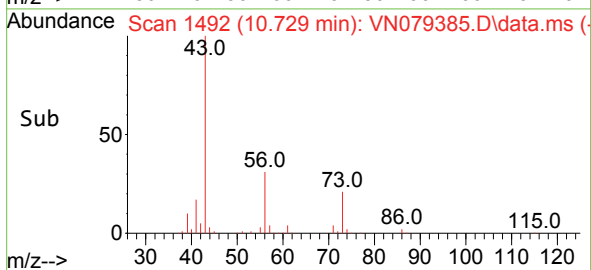
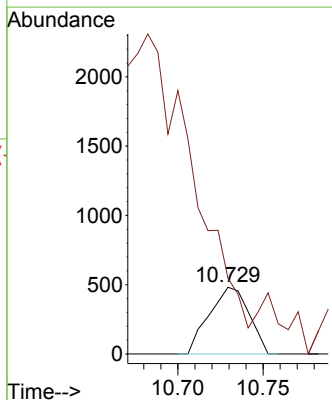
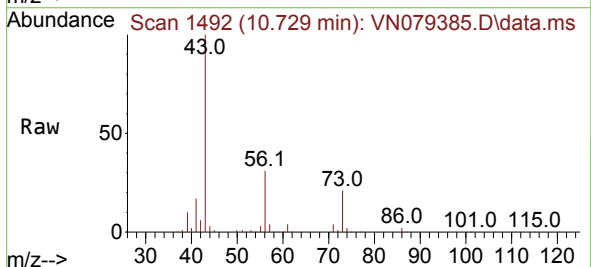
Instrument :
 MSVOA_N
 ClientSampleId :

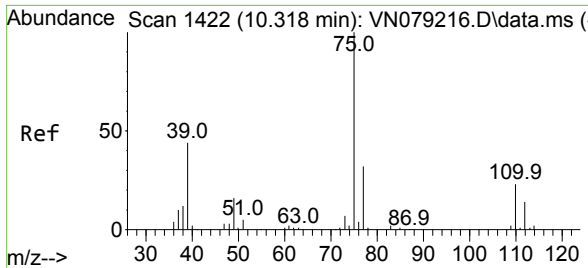
Tgt Ion: 43 Resp: 14164
 Ion Ratio Lower Upper
 43 100
 58 33.1 36.6 54.8#



#53
 t-1,3-Dichloropropene
 Concen: 0.263 ug/l
 RT: 10.729 min Scan# 1492
 Delta R.T. -0.112 min
 Lab File: VN079385.D
 Acq: 30 Sep 2023 14:34

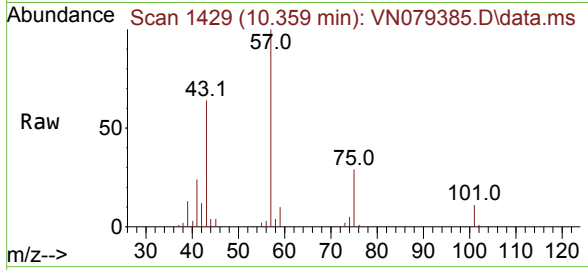
Tgt Ion: 75 Resp: 783
 Ion Ratio Lower Upper
 75 100
 77 68.0 25.4 38.0#





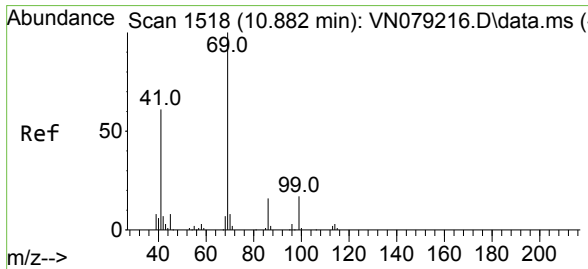
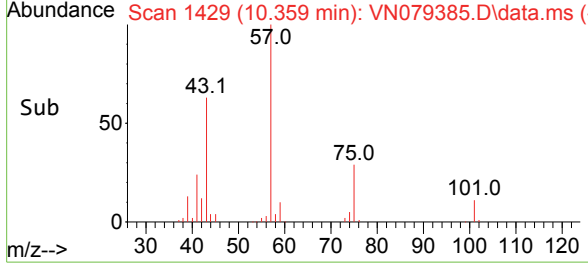
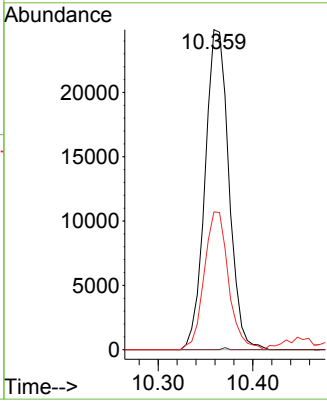
#54
 cis-1,3-Dichloropropene
 Concen: 13.678 ug/l
 RT: 10.359 min Scan# 1429
 Delta R.T. 0.041 min
 Lab File: VN079385.D
 Acq: 30 Sep 2023 14:34

Instrument : MSVOA_N
 ClientSampleId :



Tgt Ion: 75 Resp: 43578

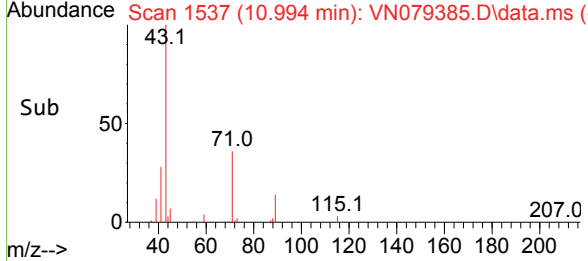
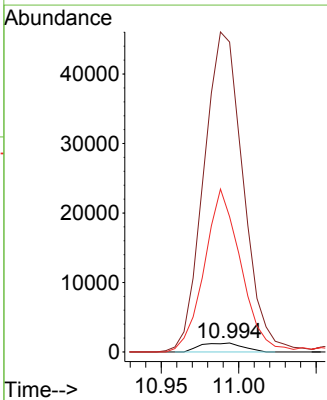
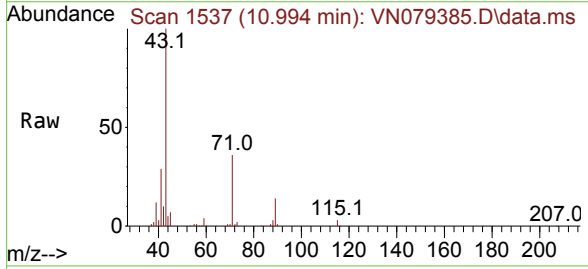
Ion	Ratio	Lower	Upper
75	100		
77	0.0	26.1	39.1#
39	43.1	31.6	47.4

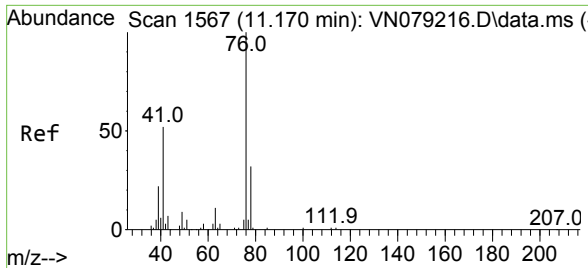


#56
 Ethyl methacrylate
 Concen: 0.880 ug/l
 RT: 10.994 min Scan# 1537
 Delta R.T. 0.117 min
 Lab File: VN079385.D
 Acq: 30 Sep 2023 14:34

Tgt Ion: 69 Resp: 2452

Ion	Ratio	Lower	Upper
69	100		
41	3331.0	39.6	59.4#
39	1567.2	28.6	43.0#

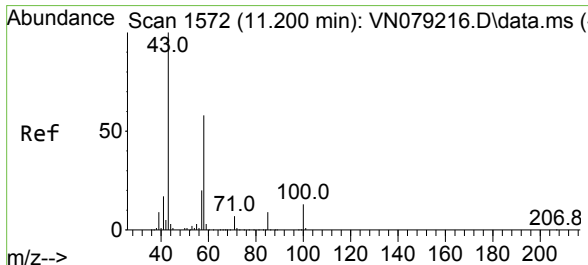
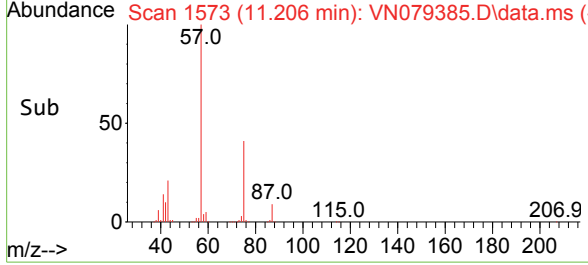
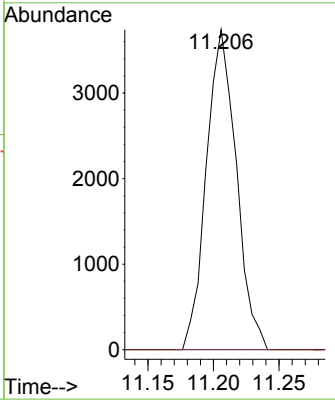
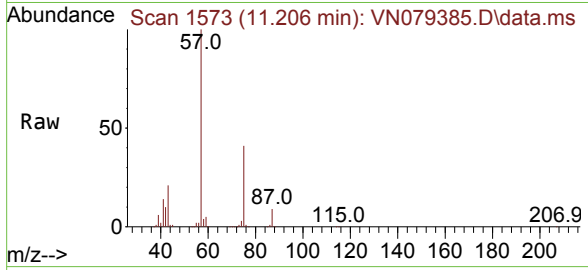




#57
 1,3-Dichloropropane
 Concen: 1.744 ug/l
 RT: 11.206 min Scan# 1573
 Delta R.T. 0.041 min
 Lab File: VN079385.D
 Acq: 30 Sep 2023 14:34

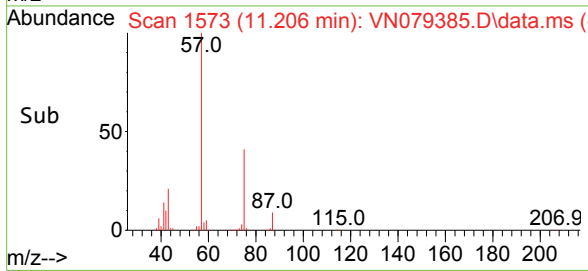
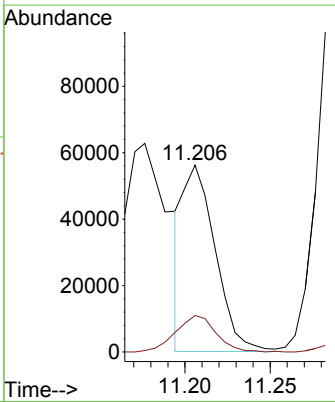
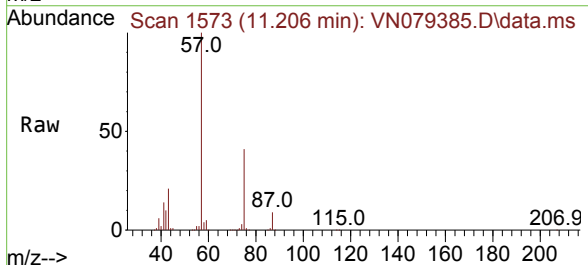
Instrument : MSVOA_N
 ClientSampleId :

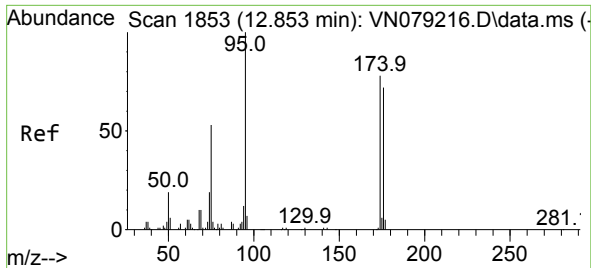
Tgt Ion: 76 Resp: 5951
 Ion Ratio Lower Upper
 76 100
 78 0.0 26.1 39.1#



#59
 2-Hexanone
 Concen: 40.899 ug/l
 RT: 11.206 min Scan# 1573
 Delta R.T. 0.006 min
 Lab File: VN079385.D
 Acq: 30 Sep 2023 14:34

Tgt Ion: 43 Resp: 74843
 Ion Ratio Lower Upper
 43 100
 58 24.1 31.7 95.1#



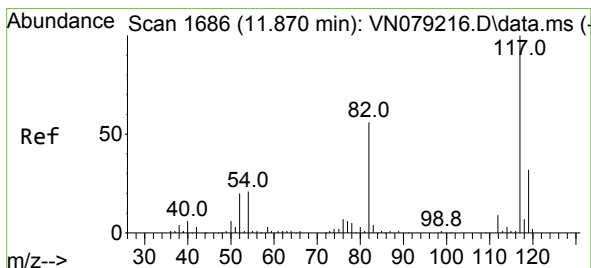
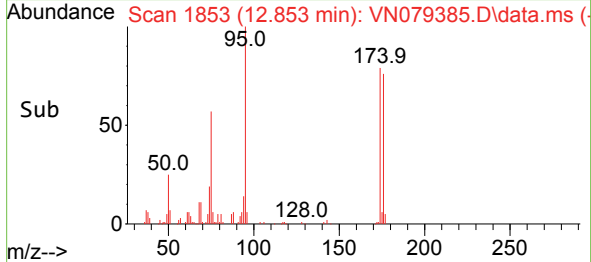
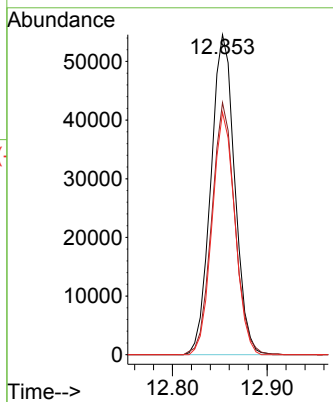
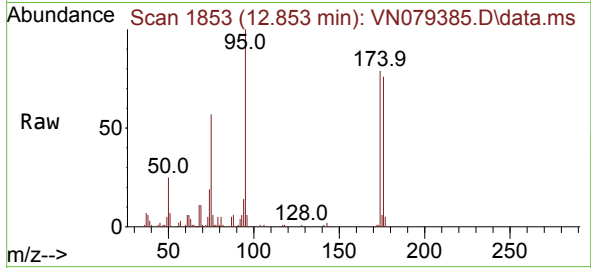


#62
 4-Bromofluorobenzene
 Concen: 46.998 ug/l
 RT: 12.853 min Scan# 1853
 Delta R.T. -0.000 min
 Lab File: VN079385.D
 Acq: 30 Sep 2023 14:34

Instrument : MSVOA_N
 ClientSampleId :

Tgt Ion: 95 Resp: 95507

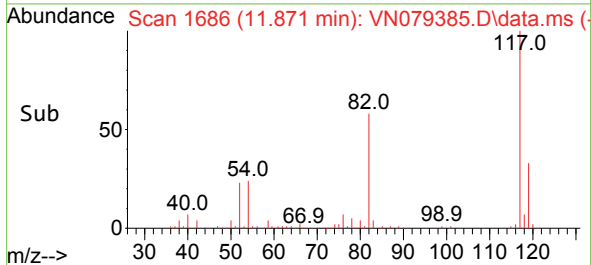
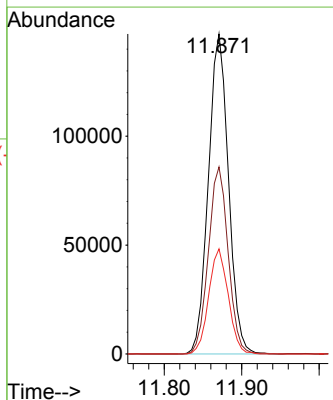
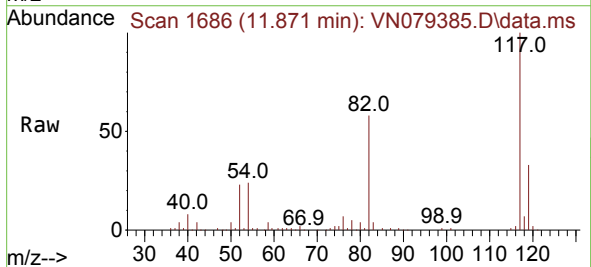
Ion	Ratio	Lower	Upper
95	100		
174	76.5	0.0	143.8
176	71.9	0.0	135.8

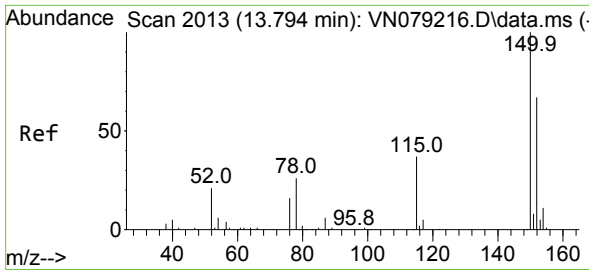


#63
 Chlorobenzene-d5
 Concen: 50.000 ug/l
 RT: 11.871 min Scan# 1686
 Delta R.T. -0.000 min
 Lab File: VN079385.D
 Acq: 30 Sep 2023 14:34

Tgt Ion: 117 Resp: 264796

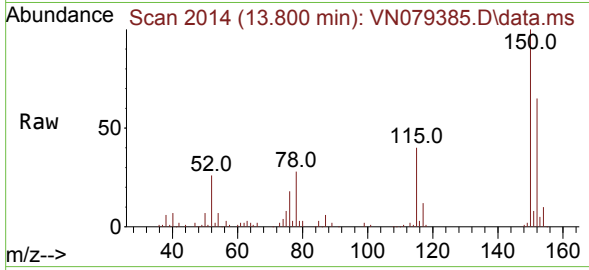
Ion	Ratio	Lower	Upper
117	100		
82	58.4	44.0	66.0
119	32.8	25.6	38.4



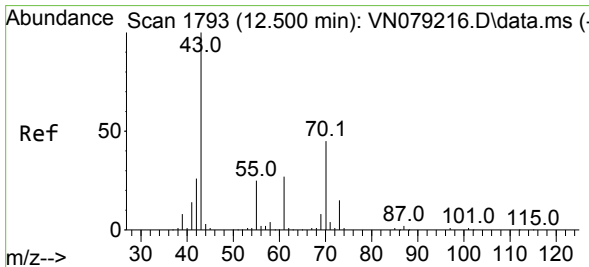
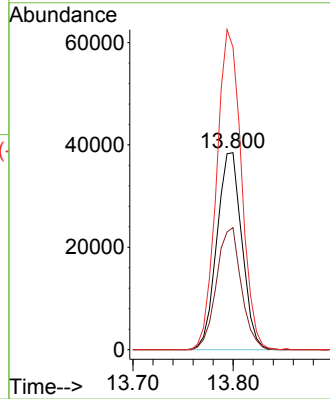
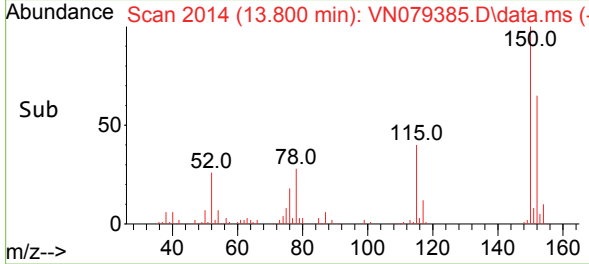


#72
 1,4-Dichlorobenzene-d4
 Concen: 50.000 ug/l
 RT: 13.800 min Scan# 2013
 Delta R.T. 0.006 min
 Lab File: VN079385.D
 Acq: 30 Sep 2023 14:34

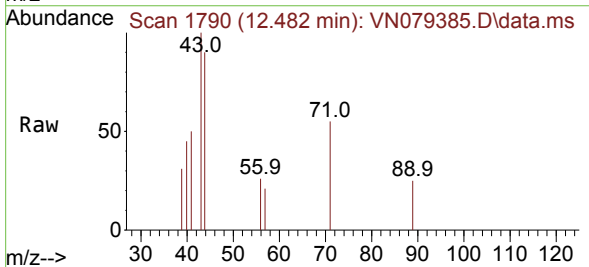
Instrument : MSVOA_N
 ClientSampleId :



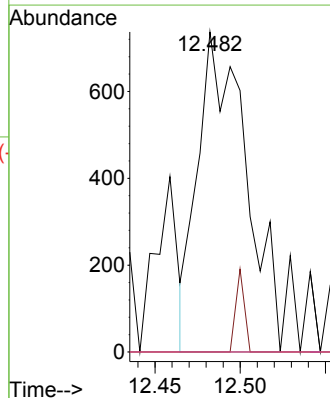
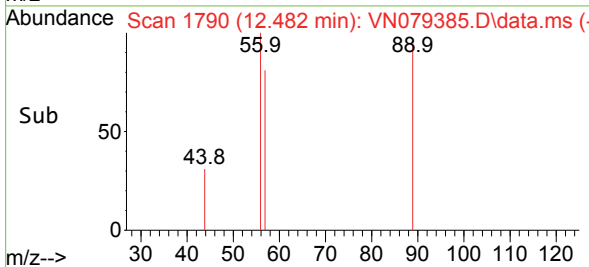
Tgt Ion:152 Resp: 66809
 Ion Ratio Lower Upper
 152 100
 115 61.4 32.3 96.8
 150 160.1 0.0 355.8

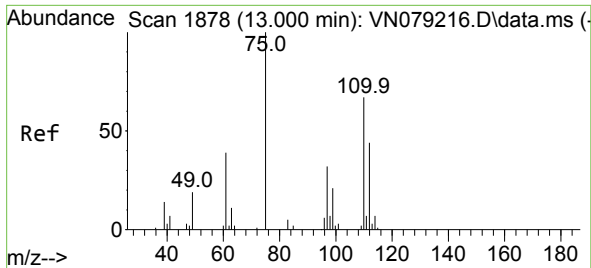


#74
 N-amy1 acetate
 Concen: 0.629 ug/l
 RT: 12.482 min Scan# 1790
 Delta R.T. -0.018 min
 Lab File: VN079385.D
 Acq: 30 Sep 2023 14:34



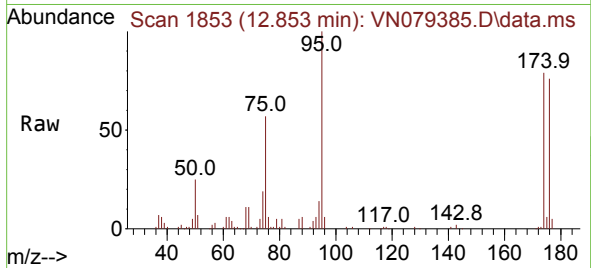
Tgt Ion: 43 Resp: 1450
 Ion Ratio Lower Upper
 43 100
 70 4.6 43.4 65.2#
 55 0.0 21.4 32.0#
 61 0.0 22.8 34.2#



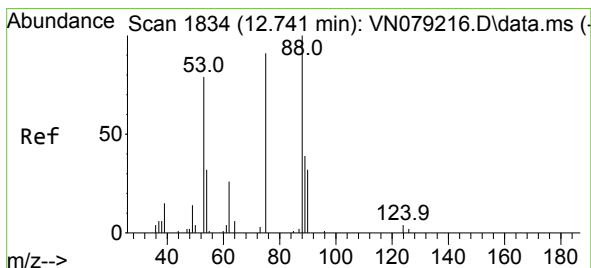
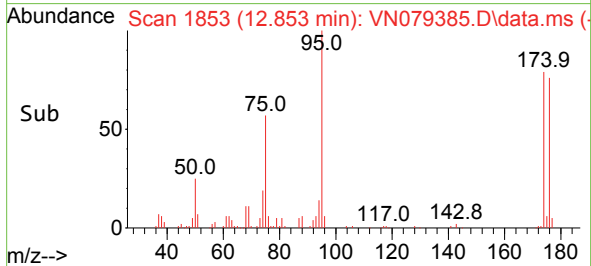
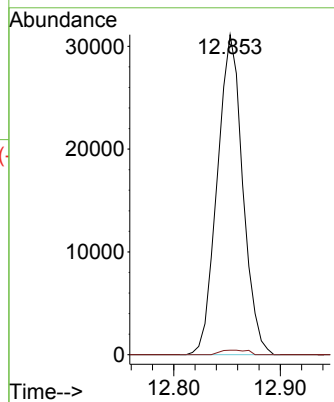


#76
 1,2,3-Trichloropropane
 Concen: 28.744 ug/l
 RT: 12.853 min Scan# 1853
 Delta R.T. -0.147 min
 Lab File: VN079385.D
 Acq: 30 Sep 2023 14:34

Instrument : MSVOA_N
 ClientSampleId :



Tgt Ion: 75 Resp: 51756
 Ion Ratio Lower Upper
 75 100
 77 1.5 84.5 253.5#



#81
 trans-1,4-Dichloro-2-butene
 Concen: 79.023 ug/l
 RT: 12.853 min Scan# 1853
 Delta R.T. 0.112 min
 Lab File: VN079385.D
 Acq: 30 Sep 2023 14:34

Tgt Ion: 75 Resp: 51756
 Ion Ratio Lower Upper
 75 100
 53 0.0 67.4 101.2#
 89 0.0 38.8 58.2#

