

Data Path : Z:\VOASRV\HPCHEM1\MSVOA N\DATA\VN100220\
 Data File : VN063839.D
 Acq On : 2 Oct 2020 23:32
 Operator : JC/MD
 Sample : VN1002WBL02
 Misc : 5.00mL/MSVOA N/WATER
 ALS Vial : 33 Sample Multiplier: 1

Instrument :
 MSVOA_N
 ClientSampled :
 VN1002WBL02

Quant Time: Oct 05 04:21:20 2020
 Quant Method : Z:\VOASRV\HPCHEM1\MSVOA_N\METHODS\82N093020W.M
 Quant Title : SW846 8260
 QLast Update : Thu Oct 01 01:46:38 2020
 Response via : Initial Calibration

Internal Standards	R.T.	QIon	Response	Conc	Units	Dev(Min)
1) Pentafluorobenzene	7.63	168	217123	50.00	ug/l	0.00
34) 1,4-Difluorobenzene	8.55	114	399459	50.00	ug/l	0.00
63) Chlorobenzene-d5	11.38	117	407184	50.00	ug/l	0.00
72) 1,4-Dichlorobenzene-d4	13.32	152	165850	50.00	ug/l	0.00

System Monitoring Compounds

33) 1,2-Dichloroethane-d4	7.99	65	191328	53.34	ug/l	0.00
Spiked Amount						
						106.68%
35) Dibromofluoromethane	7.55	113	136469	49.24	ug/l	0.00
Spiked Amount						
						98.48%
50) Toluene-d8	10.06	98	514407	48.96	ug/l	0.00
Spiked Amount						
						97.92%
62) 4-Bromofluorobenzene	12.38	95	197844	50.09	ug/l	0.00
Spiked Amount						
						100.18%

Target Compounds

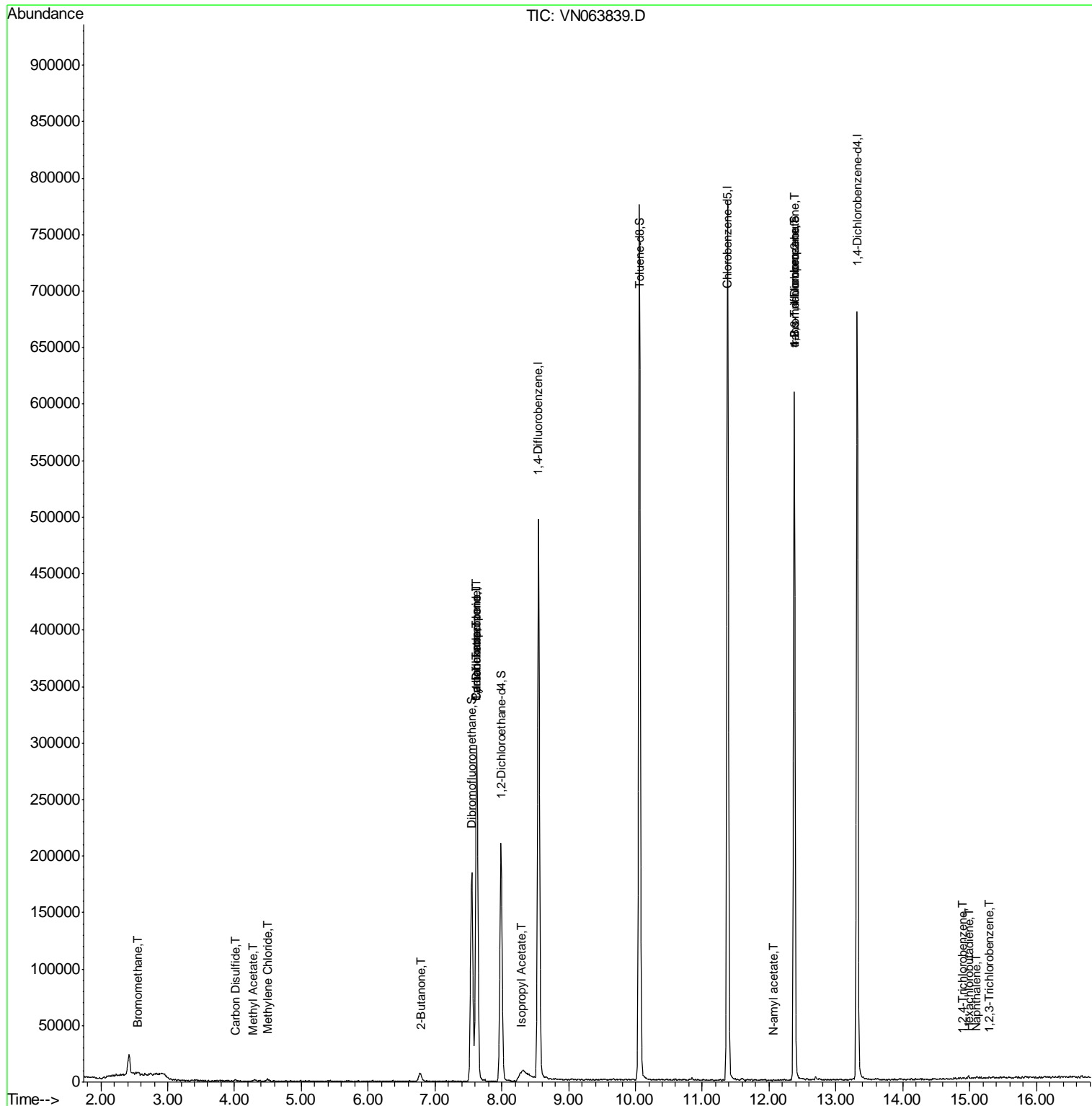
						Qvalue
5) Bromomethane	2.55	94	499	0.294	ug/l #	55
17) Carbon Disulfide	4.00	76	1615	0.970	ug/l #	76
18) Methyl Acetate	4.28	43	667	0.233	ug/l #	54
20) Methylene Chloride	4.49	84	579	0.326	ug/l #	93
25) 2-Butanone	6.79	43	501	0.320	ug/l #	51
31) Cyclohexane	7.63	56	6418	1.541	ug/l #	19
36) 1,1-Dichloropropene	7.62	75	20080	4.962	ug/l #	50
38) Carbon Tetrachloride	7.62	117	24299	5.355	ug/l #	14
43) Isopropyl Acetate	8.28	43	5678	0.856	ug/l #	64
74) N-amyl acetate	12.05	43	205	2.251	ug/l #	46
76) 1,2,3-Trichloropropane	12.38	75	111807	30.582	ug/l #	100
81) trans-1,4-Dichloro-2-buten	12.38	75	111807	88.081	ug/l #	6
93) 1,2,4-Trichlorobenzene	14.90	180	464	1.891	ug/l #	71
94) Hexachlorobutadiene	14.99	225	502	0.414	ug/l #	48
95) Naphthalene	15.11	128	1374	2.072	ug/l #	72
96) 1,2,3-Trichlorobenzene	15.30	180	190	1.634	ug/l #	75

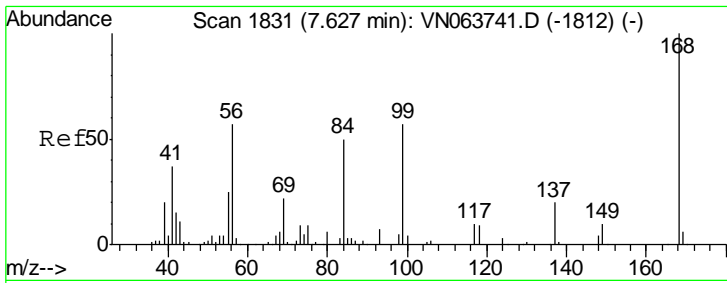
(#) = qualifier out of range (m) = manual integration (+) = signals summed

Data Path : Z:\VOASRV\HPCHEM1\MSVOA N\DATA\VN100220\
 Data File : VN063839.D
 Acq On : 2 Oct 2020 23:32
 Operator : JC/MD
 Sample : VN1002WBL02
 Misc : 5.00mL/MSVOA N/WATER
 ALS Vial : 33 Sample Multiplier: 1

Instrument :
 MSVOA_N
 Client Sampled :
 VN1002WBL02

Quant Time: Oct 05 04:21:20 2020
 Quant Method : Z:\VOASRV\HPCHEM1\MSVOA_N\METHODS\82N093020W.M
 Quant Title : SW846 8260
 QLast Update : Thu Oct 01 01:46:38 2020
 Response via : Initial Calibration

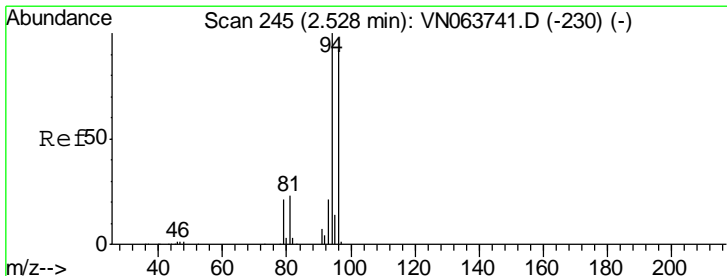
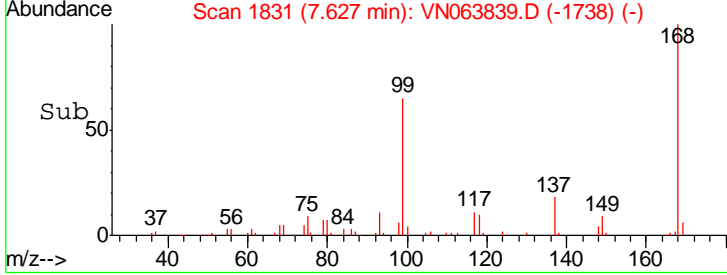
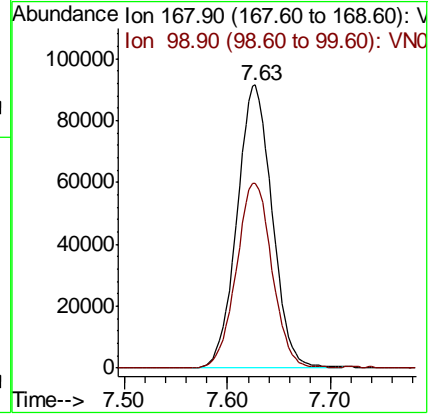
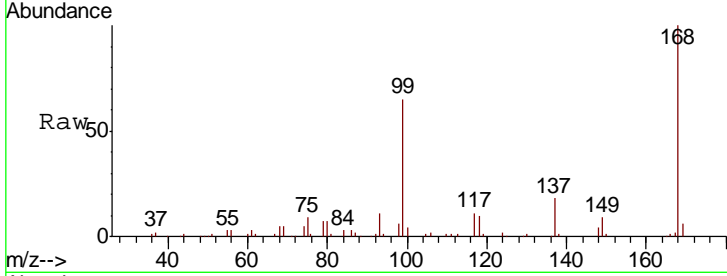




#1
 Pentafluorobenzene
 Concen: 50.000 ug/l
 RT: 7.63 min Scan# 1831
 Delta R.T. 0.00 min
 Lab File: VN063839.D
 Acq: 2 Oct 2020 23:32

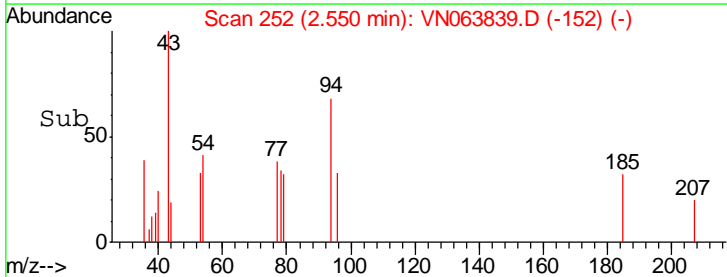
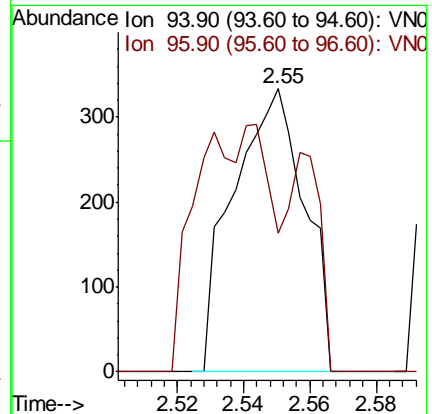
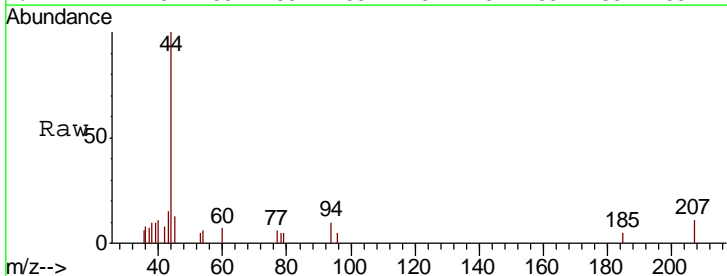
Instrument :
 MSVOA_N
 ClientSampled :
 VN1002WBL02

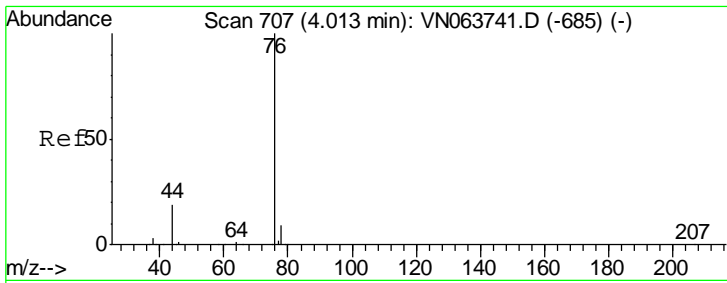
Tgt Ion: 168 Resp: 217123
 Ion Ratio Lower Upper
 168 100
 99 65.3 51.8 77.6



#5
 Bromomethane
 Concen: 0.294 ug/l
 RT: 2.55 min Scan# 252
 Delta R.T. 0.02 min
 Lab File: VN063839.D
 Acq: 2 Oct 2020 23:32

Tgt Ion: 94 Resp: 499
 Ion Ratio Lower Upper
 94 100
 96 49.2 73.3 109.9#

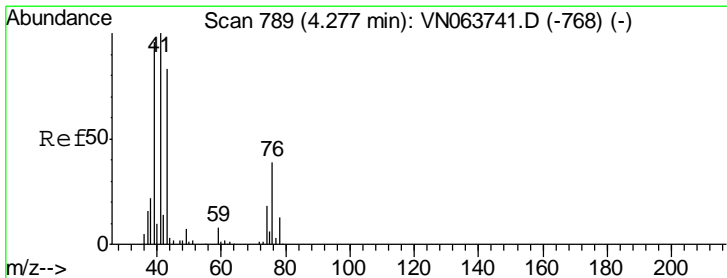
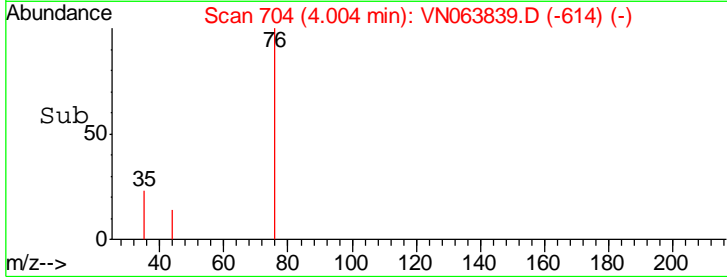
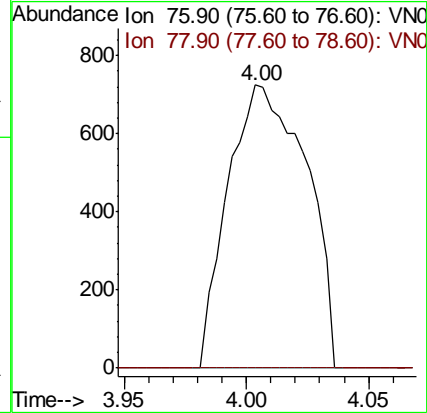
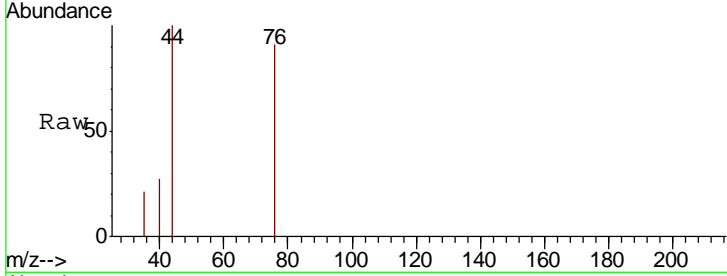




#17
 Carbon Disulfide
 Concen: 0.970 ug/l
 RT: 4.00 min Scan# 704
 Delta R.T. -0.01 min
 Lab File: VN063839.D
 Acq: 2 Oct 2020 23:32

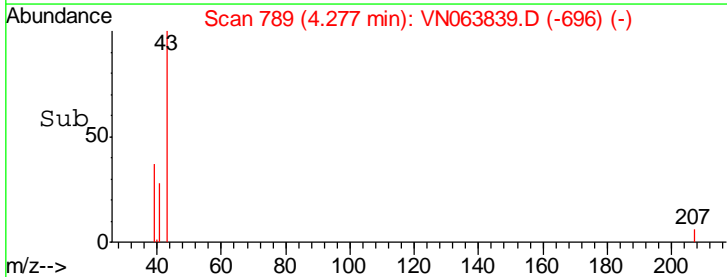
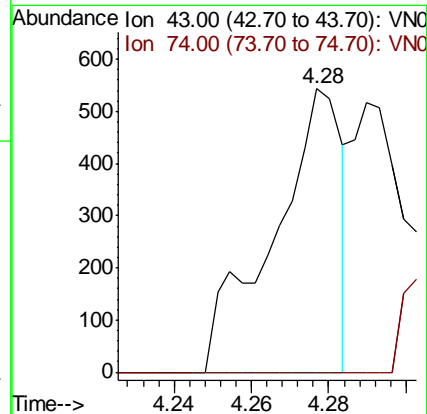
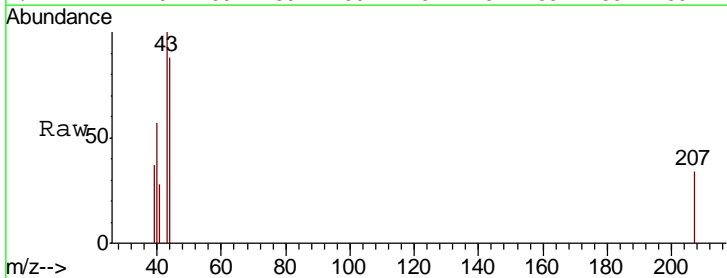
Instrument :
 MSVOA_N
 ClientSampled :
 VN1002WBL02

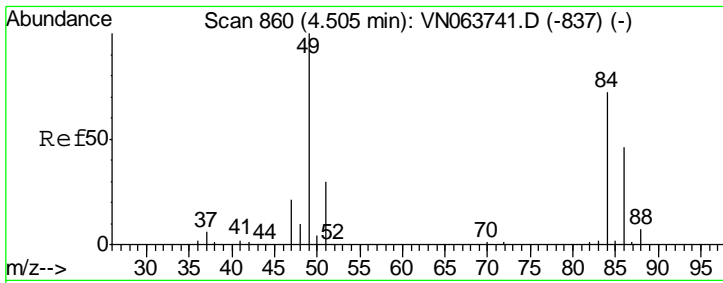
Tgt Ion: 76 Resp: 1615
 Ion Ratio Lower Upper
 76 100
 78 0.0 7.0 10.4#



#18
 Methyl Acetate
 Concen: 0.233 ug/l
 RT: 4.28 min Scan# 789
 Delta R.T. 0.00 min
 Lab File: VN063839.D
 Acq: 2 Oct 2020 23:32

Tgt Ion: 43 Resp: 667
 Ion Ratio Lower Upper
 43 100
 74 0.0 17.4 26.2#

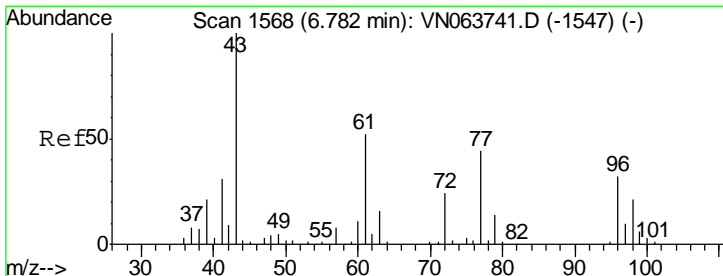
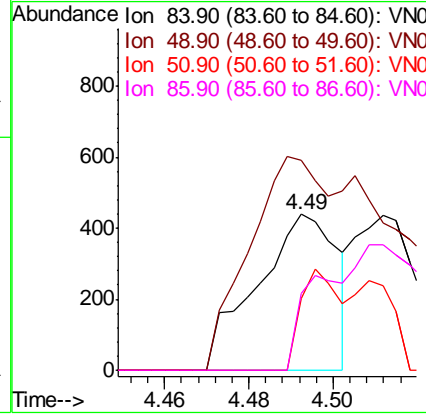
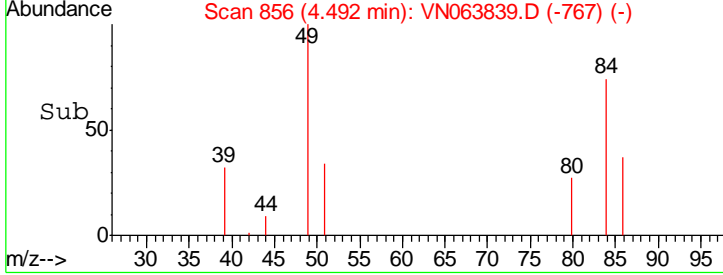
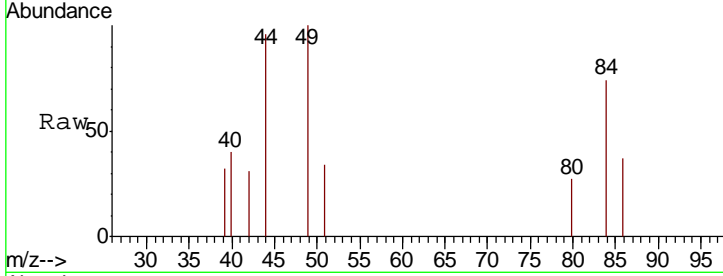




#20
 Methylene Chloride
 Concen: 0.326 ug/l
 RT: 4.49 min Scan# 856
 Delta R.T. -0.01 min
 Lab File: VN063839.D
 Acq: 2 Oct 2020 23:32

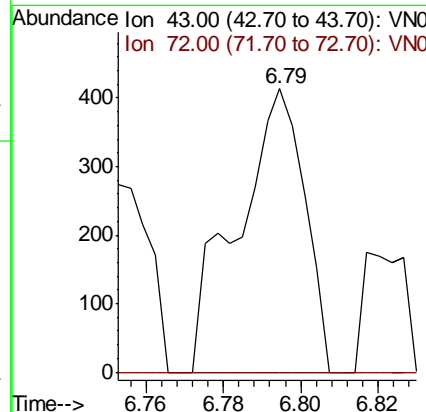
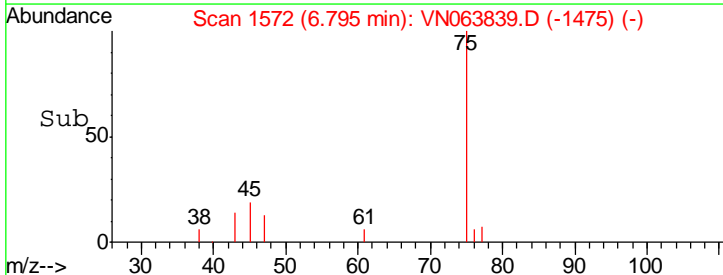
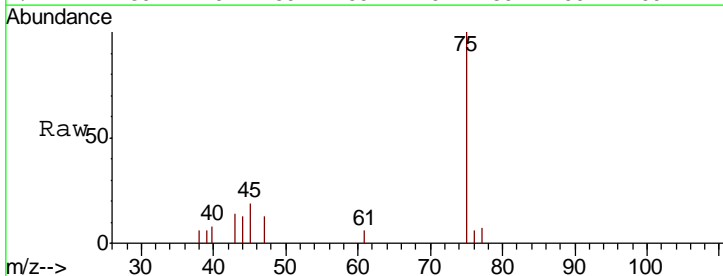
Instrument :
 MSVOA_N
 ClientSampled :
 VN1002WBL02

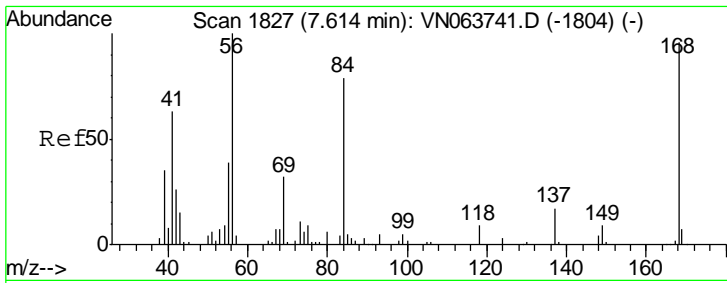
Tgt Ion	Resp	Lower	Upper
84	100		
49	134.9	110.4	165.6
51	46.3	33.3	49.9
86	49.5	50.7	76.1#



#25
 2-Butanone
 Concen: 0.320 ug/l
 RT: 6.79 min Scan# 1572
 Delta R.T. 0.01 min
 Lab File: VN063839.D
 Acq: 2 Oct 2020 23:32

Tgt Ion	Resp	Lower	Upper
43	100		
72	0.0	19.3	28.9#

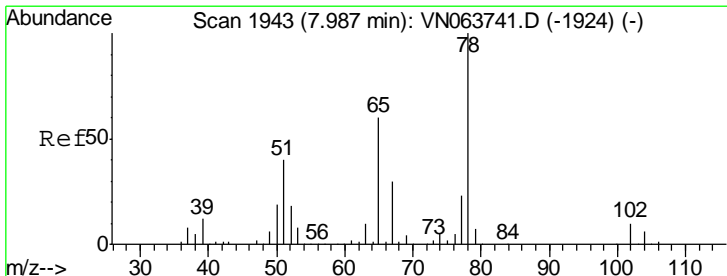
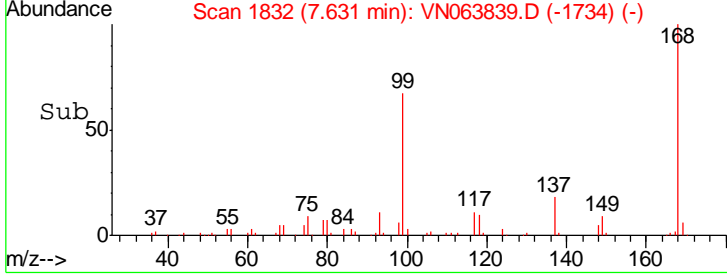
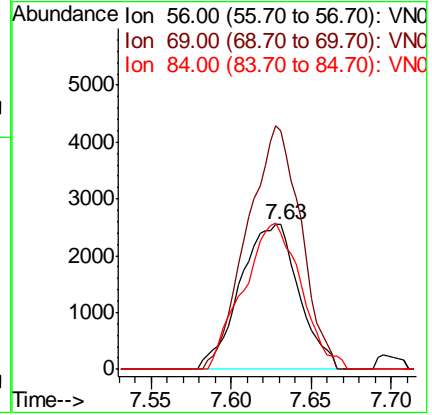
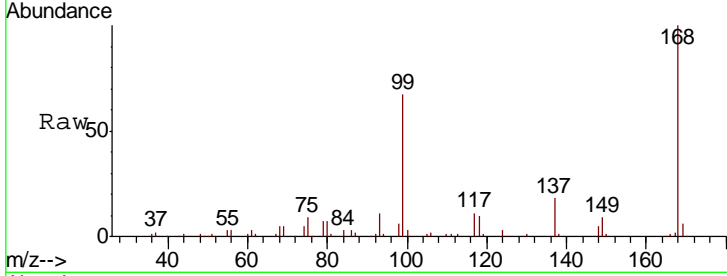




#31
 Cyclohexane
 Concen: 1.541 ug/l
 RT: 7.63 min Scan# 1832
 Delta R.T. 0.02 min
 Lab File: VN063839.D
 Acq: 2 Oct 2020 23:32

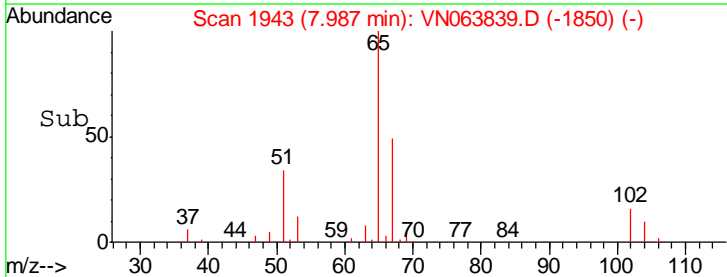
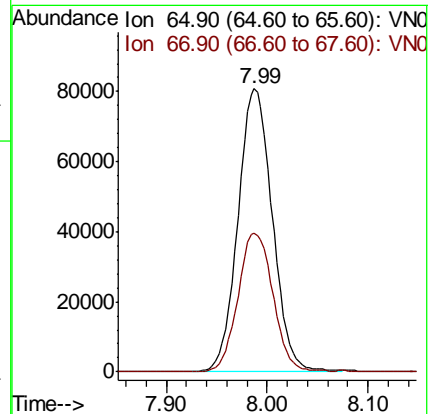
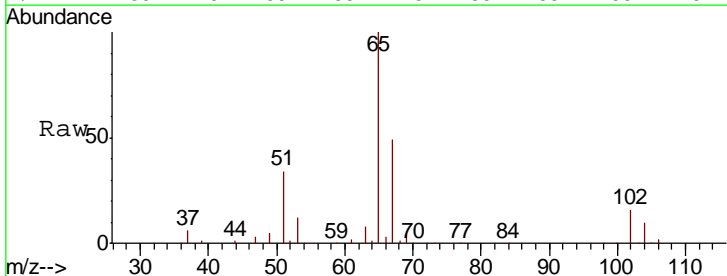
Instrument :
 MSVOA_N
 ClientSampled :
 VN1002WBL02

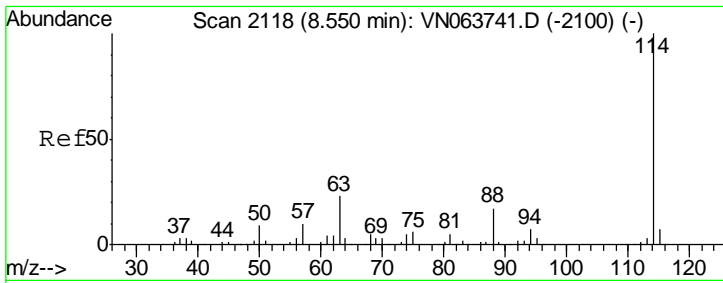
Tgt Ion	Resp	Lower	Upper
56	100		
69	165.3	25.4	38.2#
84	94.2	63.3	94.9



#33
 1,2-Dichloroethane-d4
 Concen: 53.339 ug/l
 RT: 7.99 min Scan# 1943
 Delta R.T. 0.00 min
 Lab File: VN063839.D
 Acq: 2 Oct 2020 23:32

Tgt Ion	Resp	Lower	Upper
65	100		
67	50.1	0.0	99.6

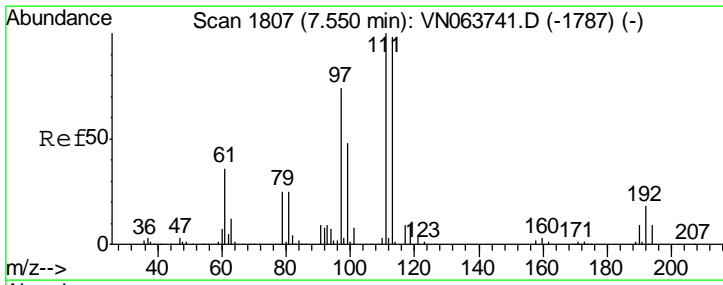
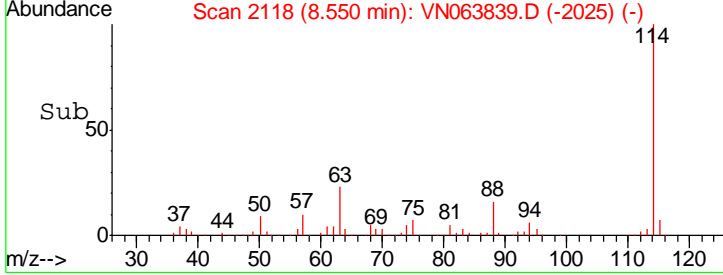
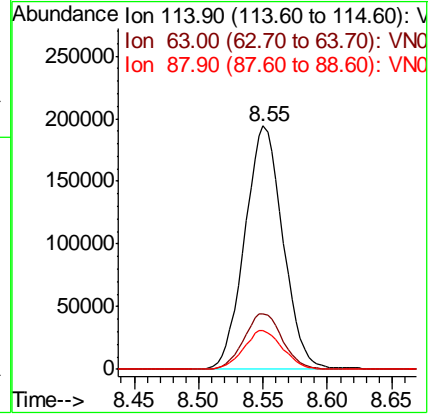
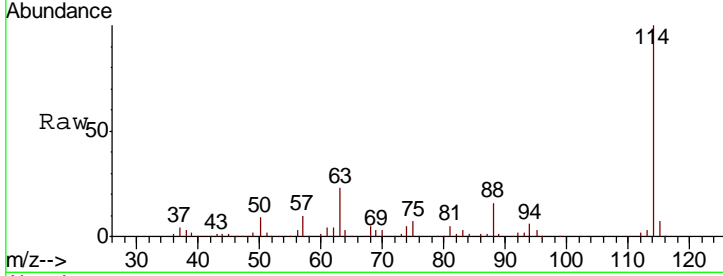




#34
 1,4-Difluorobenzene
 Concen: 50.000 ug/l
 RT: 8.55 min Scan# 2118
 Delta R.T. 0.00 min
 Lab File: VN063839.D
 Acq: 2 Oct 2020 23:32

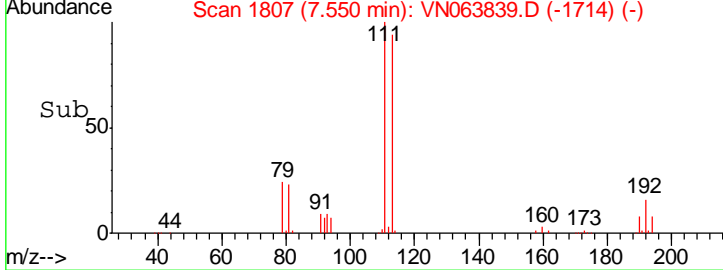
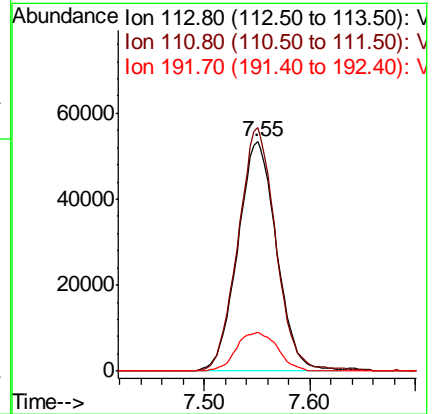
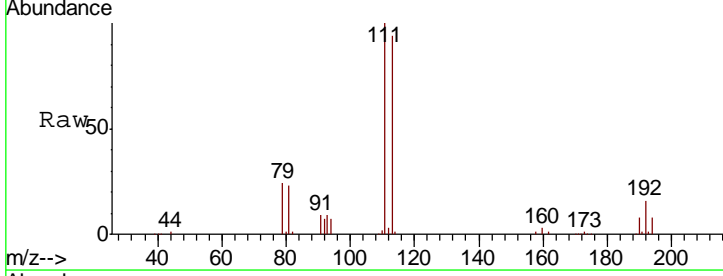
Instrument : MSVOA_N
 ClientSampled : VN1002WBL02

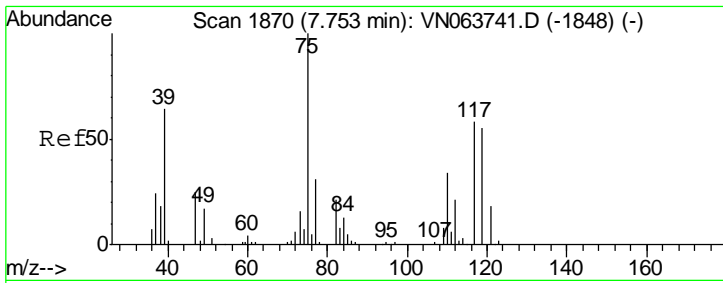
Tgt Ion	Resp	Lower	Upper
114	399459		
63	22.8	0.0	45.0
88	16.0	0.0	34.0



#35
 Dibromofluoromethane
 Concen: 49.236 ug/l
 RT: 7.55 min Scan# 1807
 Delta R.T. 0.00 min
 Lab File: VN063839.D
 Acq: 2 Oct 2020 23:32

Tgt Ion	Resp	Lower	Upper
113	136469		
111	103.4	81.8	122.8
192	18.0	14.2	21.2

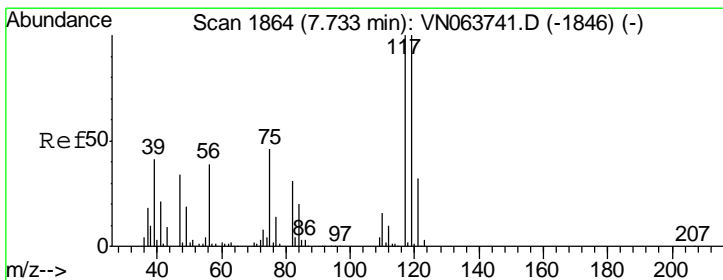
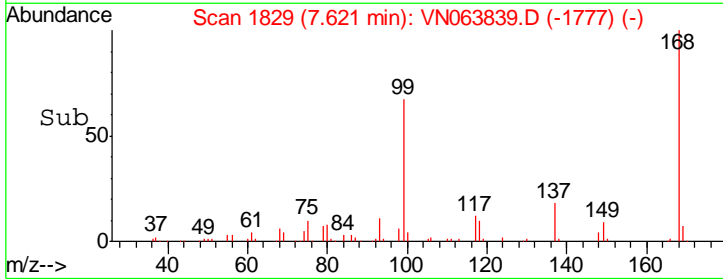
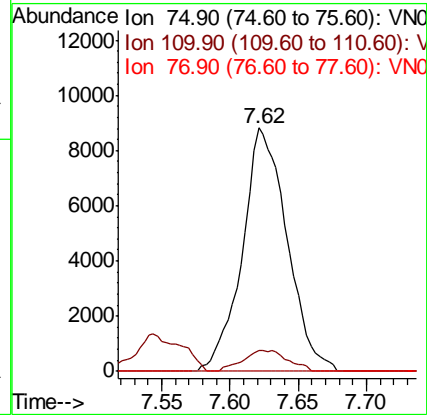
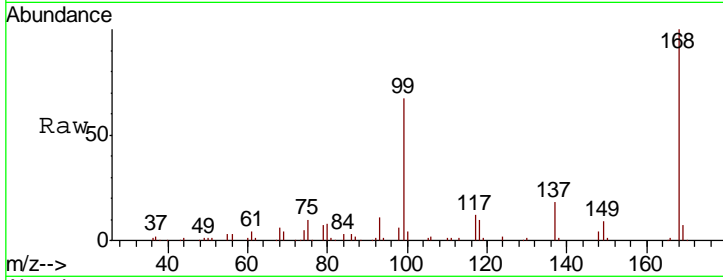




#36
 1,1-Dichloropropene
 Concen: 4.962 ug/l
 RT: 7.62 min Scan# 1829
 Delta R.T. -0.13 min
 Lab File: VN063839.D
 Acq: 2 Oct 2020 23:32

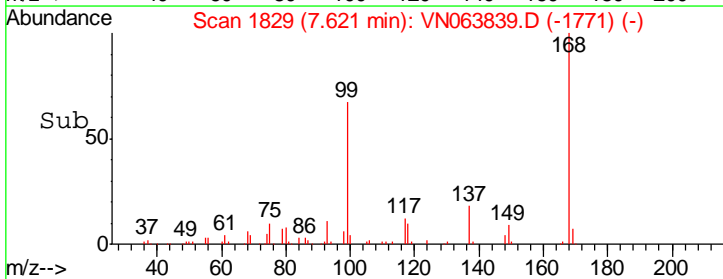
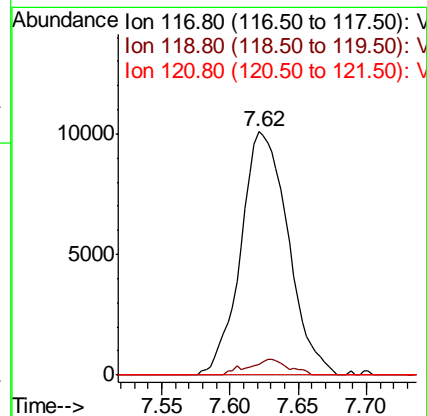
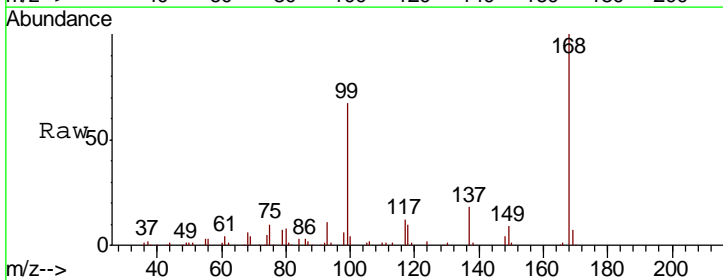
Instrument :
 MSVOA_N
 ClientSampled :
 VN1002WBL02

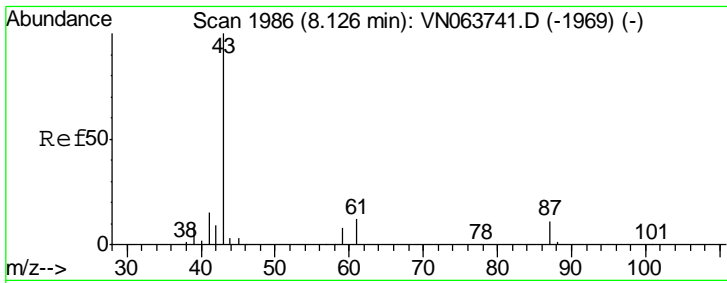
Tgt Ion	Resp	Lower	Upper
75	100		
110	8.7	16.9	50.6#
77	0.0	24.5	36.7#



#38
 Carbon Tetrachloride
 Concen: 5.355 ug/l
 RT: 7.62 min Scan# 1829
 Delta R.T. -0.11 min
 Lab File: VN063839.D
 Acq: 2 Oct 2020 23:32

Tgt Ion	Resp	Lower	Upper
117	100		
119	4.5	80.1	120.1#
121	0.0	25.7	38.5#

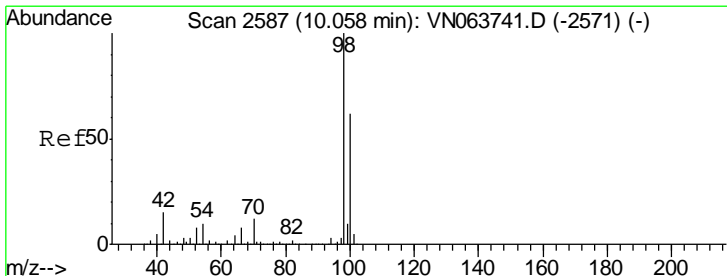
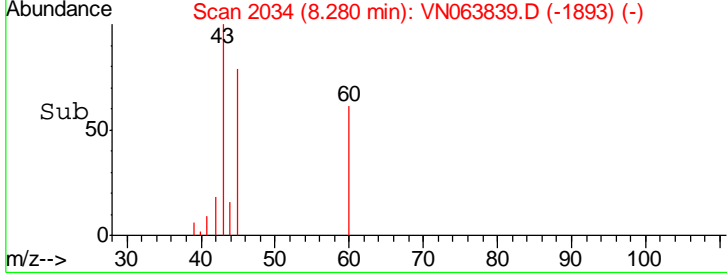
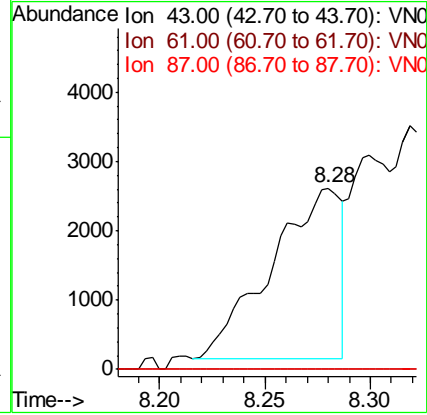
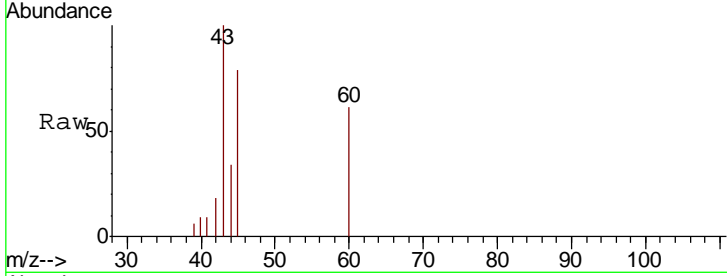




#43
 Isopropyl Acetate
 Concen: 0.856 ug/l
 RT: 8.28 min Scan# 2034
 Delta R.T. 0.15 min
 Lab File: VN063839.D
 Acq: 2 Oct 2020 23:32

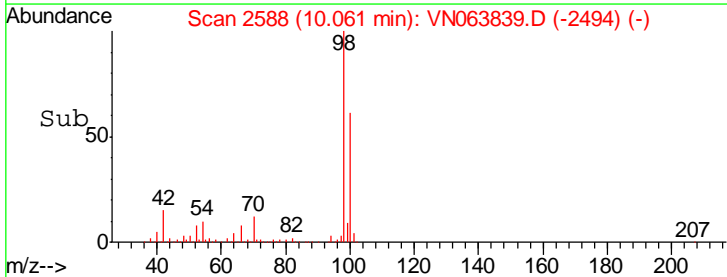
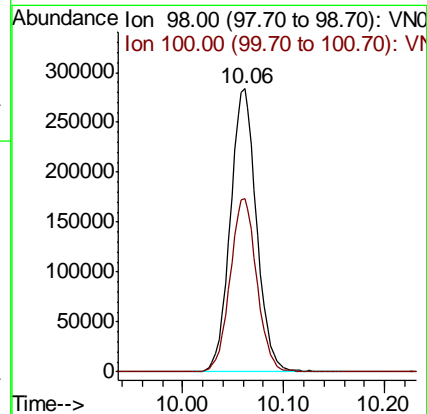
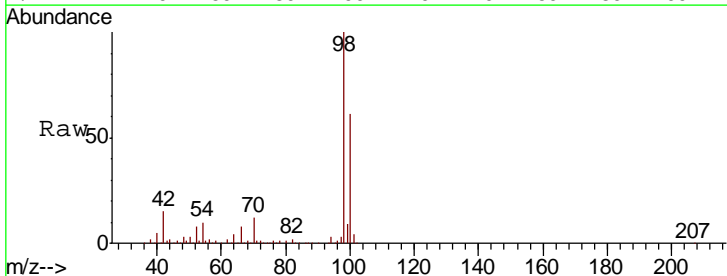
Instrument :
 MSVOA_N
 ClientSampleId :
 VN1002WBL02

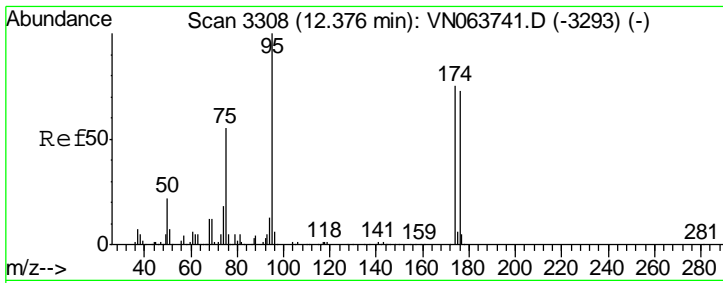
Tgt Ion	Resp	Lower	Upper
43	100		
61	0.0	14.2	21.4#
87	0.0	9.0	13.6#



#50
 Toluene-d8
 Concen: 48.957 ug/l
 RT: 10.06 min Scan# 2588
 Delta R.T. 0.00 min
 Lab File: VN063839.D
 Acq: 2 Oct 2020 23:32

Tgt Ion	Resp	Lower	Upper
98	100		
100	62.3	49.8	74.6

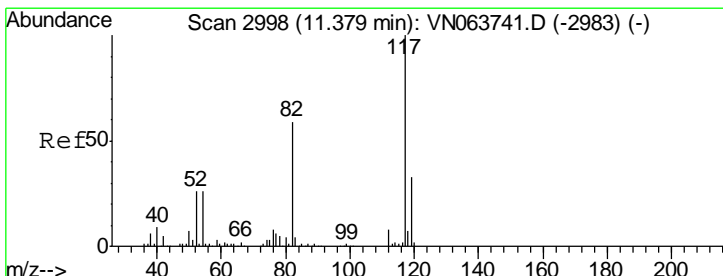
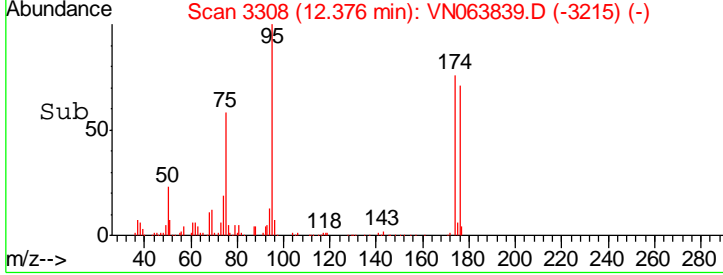
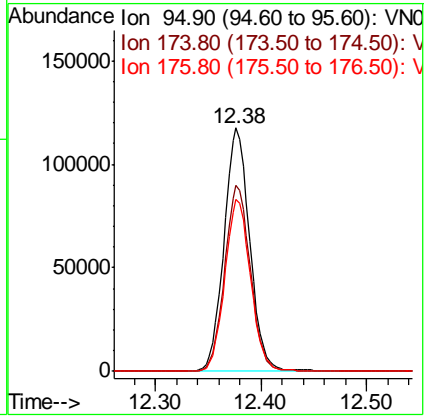
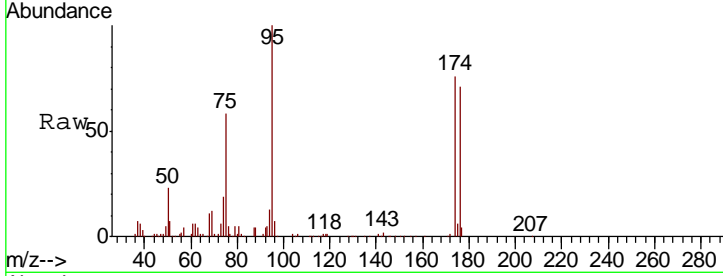




#62
 4-Bromofluorobenzene
 Concen: 50.089 ug/l
 RT: 12.38 min Scan# 3308
 Delta R.T. 0.00 min
 Lab File: VN063839.D
 Acq: 2 Oct 2020 23:32

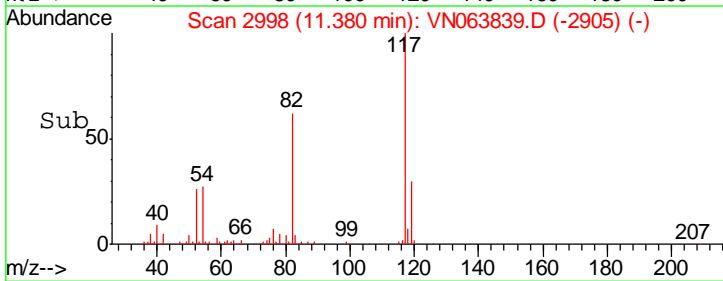
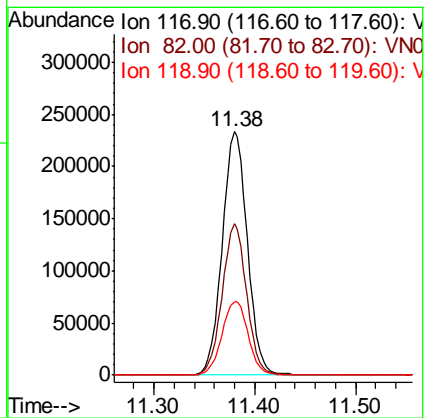
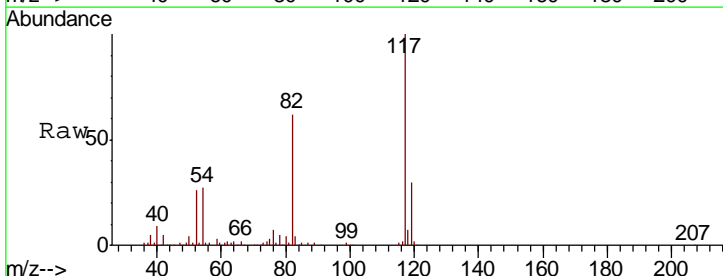
Instrument : MSVOA_N
 ClientSampled : VN1002WBL02

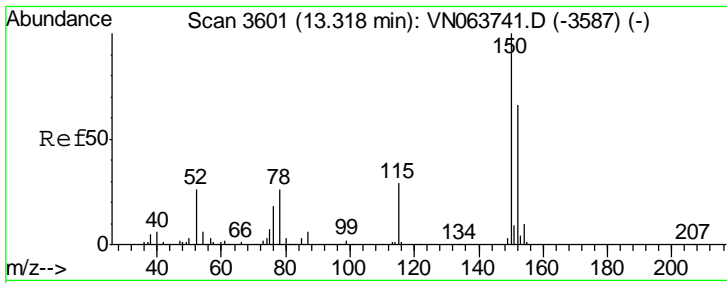
Tgt Ion	Resp	Lower	Upper
95	197844		
174	76.4	0.0	150.6
176	70.9	0.0	145.4



#63
 Chlorobenzene-d5
 Concen: 50.000 ug/l
 RT: 11.38 min Scan# 2998
 Delta R.T. 0.00 min
 Lab File: VN063839.D
 Acq: 2 Oct 2020 23:32

Tgt Ion	Resp	Lower	Upper
117	407184		
82	62.0	47.4	71.2
119	30.3	26.4	39.6

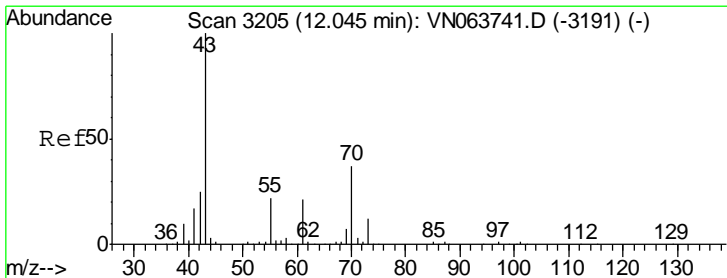
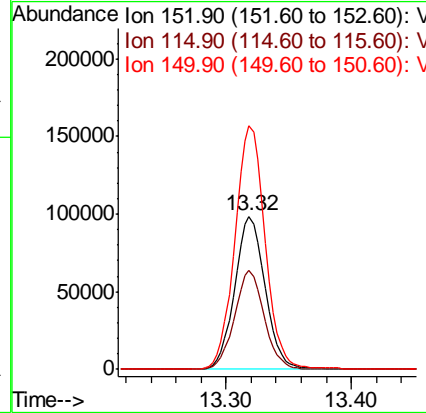
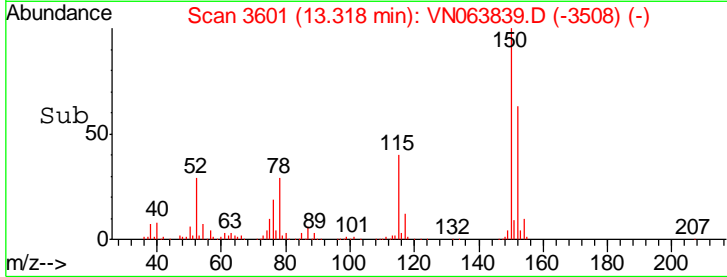
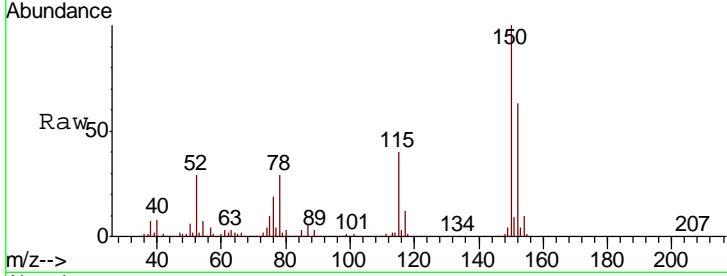




#72
 1,4-Dichlorobenzene-d4
 Concen: 50.000 ug/l
 RT: 13.32 min Scan# 3601
 Delta R.T. 0.00 min
 Lab File: VN063839.D
 Acq: 2 Oct 2020 23:32

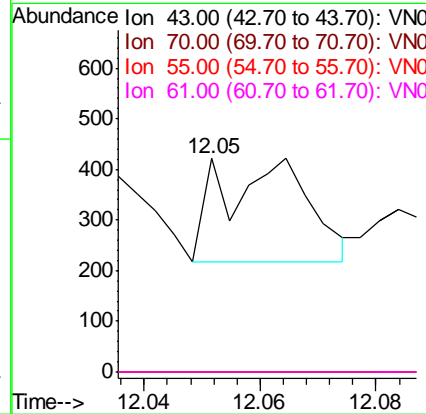
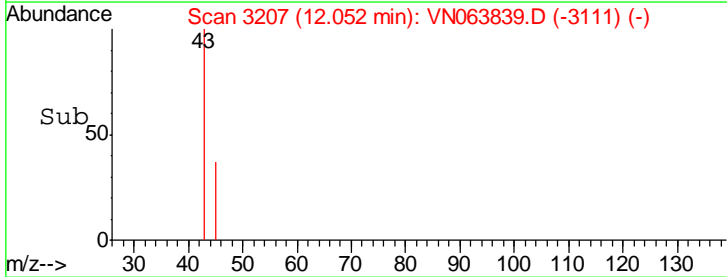
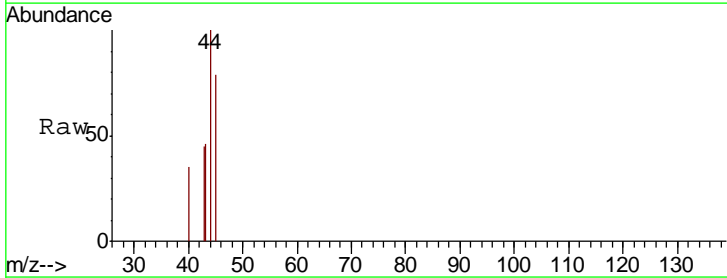
Instrument :
 MSVOA_N
 ClientSampled :
 VN1002WBL02

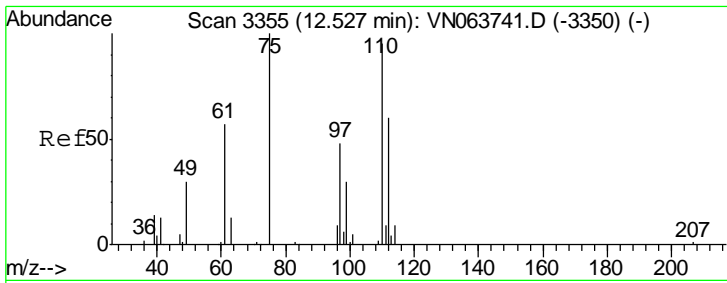
Tgt Ion	Resp	Lower	Upper
152	100		
115	63.1	31.3	93.8
150	158.2	0.0	341.8



#74
 N-nyl acetate
 Concen: 2.251 ug/l
 RT: 12.05 min Scan# 3207
 Delta R.T. 0.01 min
 Lab File: VN063839.D
 Acq: 2 Oct 2020 23:32

Tgt Ion	Resp	Lower	Upper
43	100		
70	0.0	29.8	44.8#
55	0.0	17.9	26.9#
61	0.0	17.0	25.4#

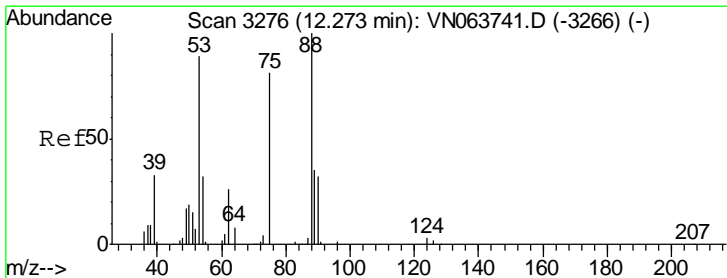
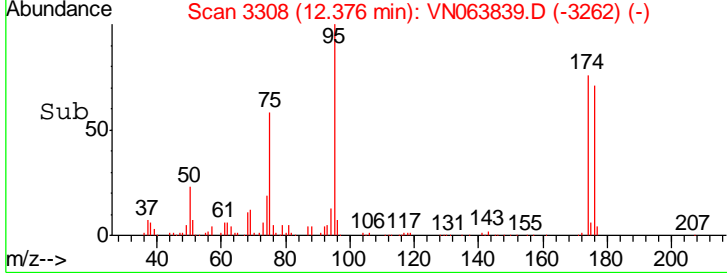
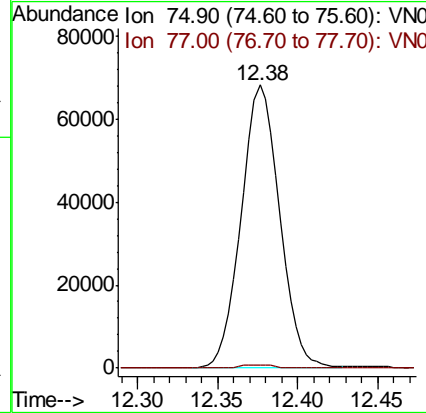
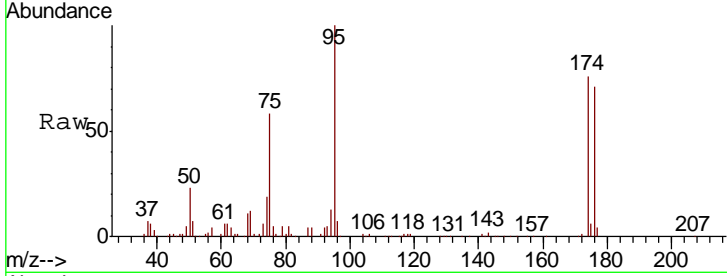




#76
 1,2,3-Trichloropropane
 Concen: 30.582 ug/l
 RT: 12.38 min Scan# 3308
 Delta R.T. -0.15 min
 Lab File: VN063839.D
 Acq: 2 Oct 2020 23:32

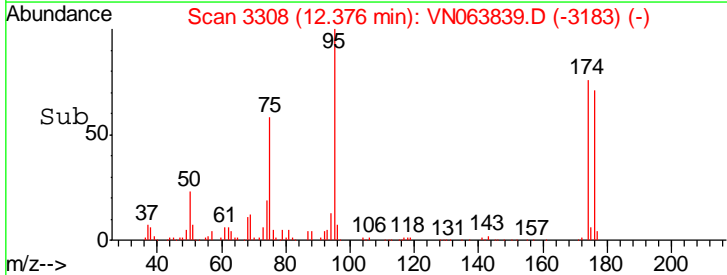
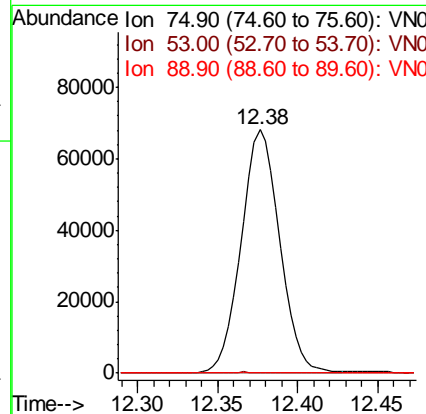
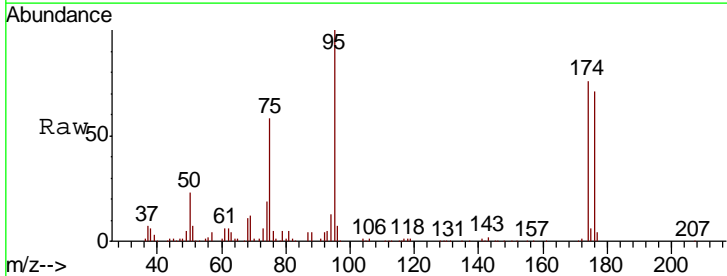
Instrument :
 MSVOA_N
 ClientSampled :
 VN1002WBL02

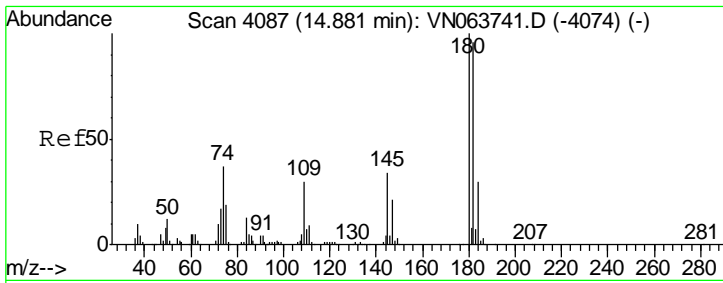
Tgt Ion: 75 Resp: 111807
 Ion Ratio Lower Upper
 75 100
 77 1.1 0.0 0.0#



#81
 trans-1,4-Dichloro-2-butene
 Concen: 88.081 ug/l
 RT: 12.38 min Scan# 3308
 Delta R.T. 0.10 min
 Lab File: VN063839.D
 Acq: 2 Oct 2020 23:32

Tgt Ion: 75 Resp: 111807
 Ion Ratio Lower Upper
 75 100
 53 0.2 88.2 132.2#
 89 0.0 36.0 54.0#

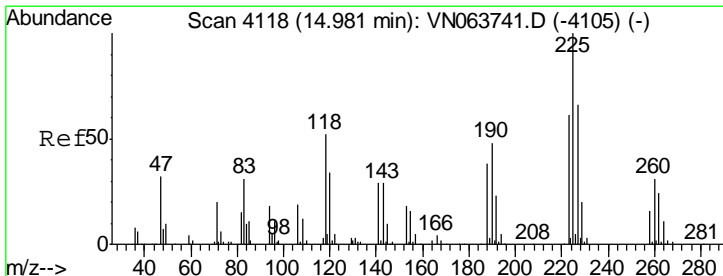
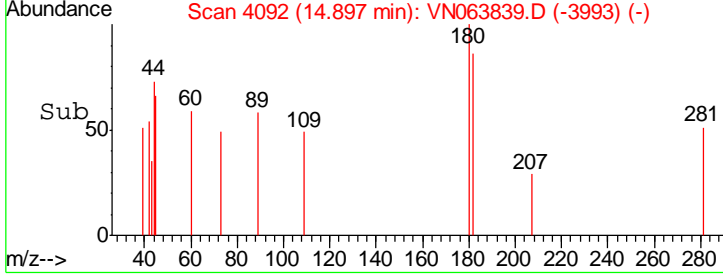
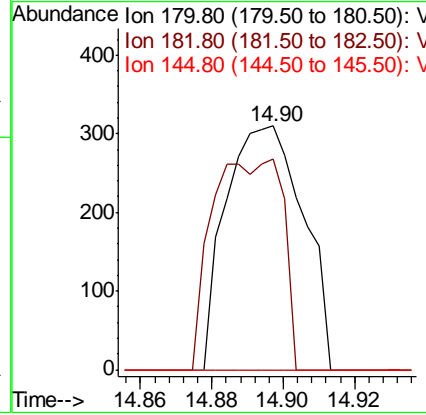
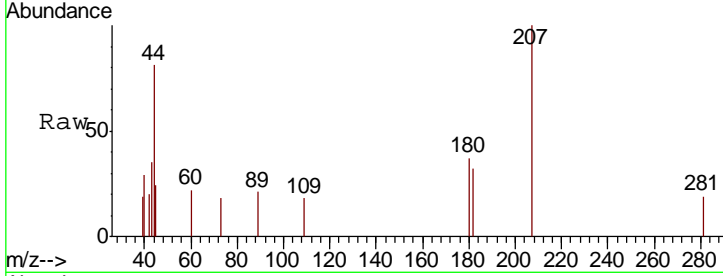




#93
 1,2,4-Trichlorobenzene
 Concen: 1.891 ug/l
 RT: 14.90 min Scan# 4092
 Delta R.T. 0.02 min
 Lab File: VN063839.D
 Acq: 2 Oct 2020 23:32

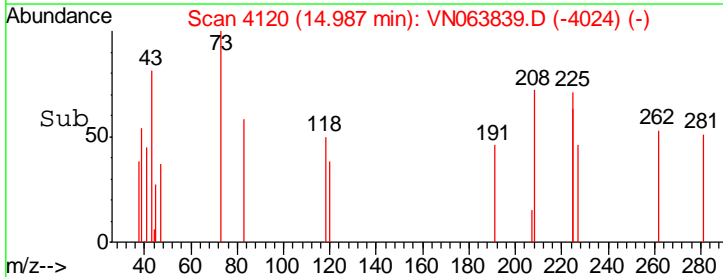
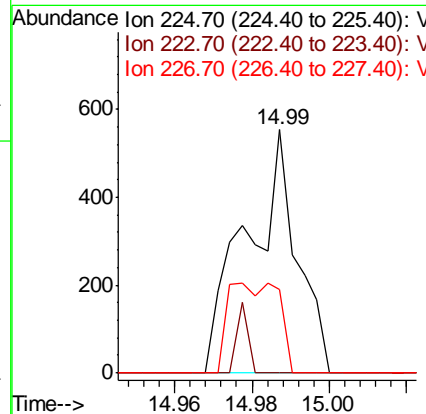
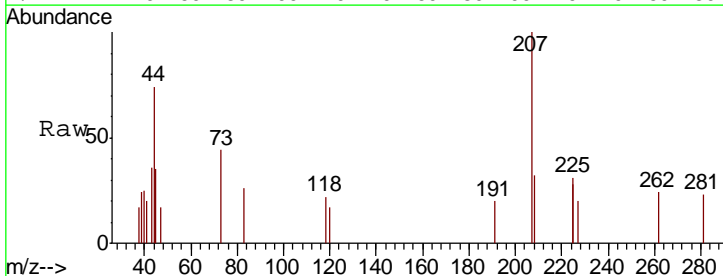
Instrument : MSVOA_N
 ClientSampled : VN1002WBL02

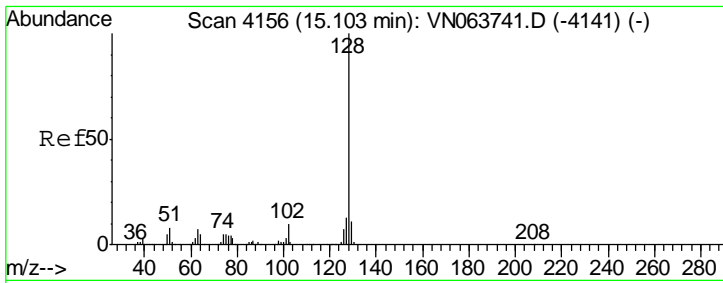
Tgt Ion	Resp	Lower	Upper
180	100		
182	79.1	48.2	144.6
145	0.0	17.1	51.2#



#94
 Hexachlorobutadiene
 Concen: 0.414 ug/l
 RT: 14.99 min Scan# 4120
 Delta R.T. 0.01 min
 Lab File: VN063839.D
 Acq: 2 Oct 2020 23:32

Tgt Ion	Resp	Lower	Upper
225	100		
223	6.2	30.3	91.0#
227	37.6	31.9	95.5

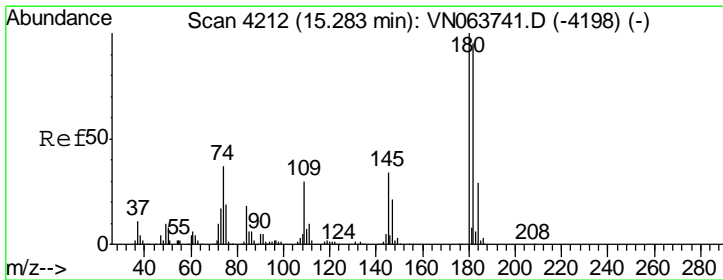
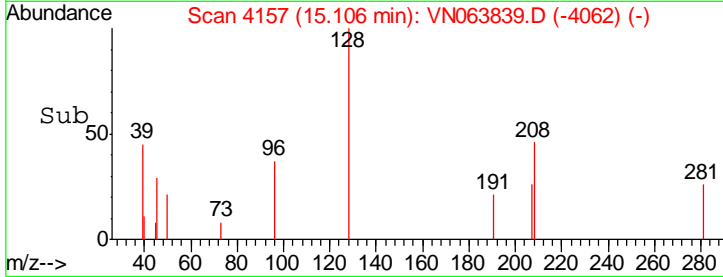
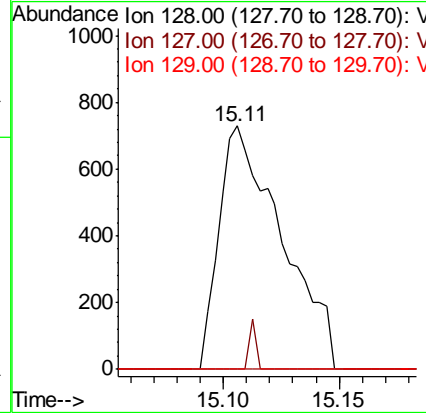
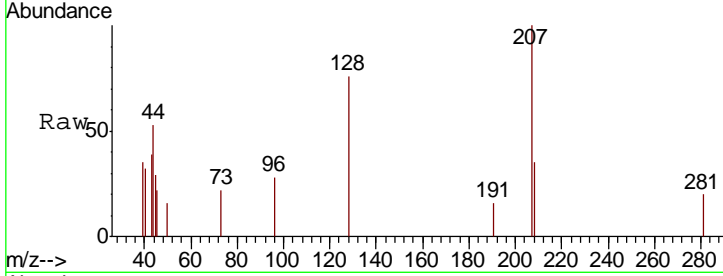




#95
 Naphthalene
 Concen: 2.072 ug/l
 RT: 15.11 min Scan# 4157
 Delta R.T. 0.00 min
 Lab File: VN063839.D
 Acq: 2 Oct 2020 23:32

Instrument :
 MSVOA_N
 ClientSampled :
 VN1002WBL02

Tgt Ion	Resp	Lower	Upper
128	1374		
127	2.1	10.5	15.7#
129	0.0	8.7	13.1#



#96
 1,2,3-Trichlorobenzene
 Concen: 1.634 ug/l
 RT: 15.30 min Scan# 4216
 Delta R.T. 0.01 min
 Lab File: VN063839.D
 Acq: 2 Oct 2020 23:32

Tgt Ion	Resp	Lower	Upper
180	190		
182	83.2	47.9	143.6
145	0.0	17.2	51.5#

