

Data Path : Z:\voasrv\HPCHEM1\MSVOA\_N\Data\VN100224\  
 Data File : VN084268.D  
 Acq On : 02 Oct 2024 16:33  
 Operator : JC\MD  
 Sample : P4226-11  
 Misc : 5.0mL/MSVOA\_N/WATER  
 ALS Vial : 14 Sample Multiplier: 1

Instrument :  
 MSVOA\_N  
 ClientSampleId :

Quant Time: Oct 03 02:01:28 2024  
 Quant Method : Z:\voasrv\HPCHEM1\MSVOA\_N\methods\82N093024W.M  
 Quant Title : SW846 8260  
 QLast Update : Tue Oct 01 07:11:01 2024  
 Response via : Initial Calibration

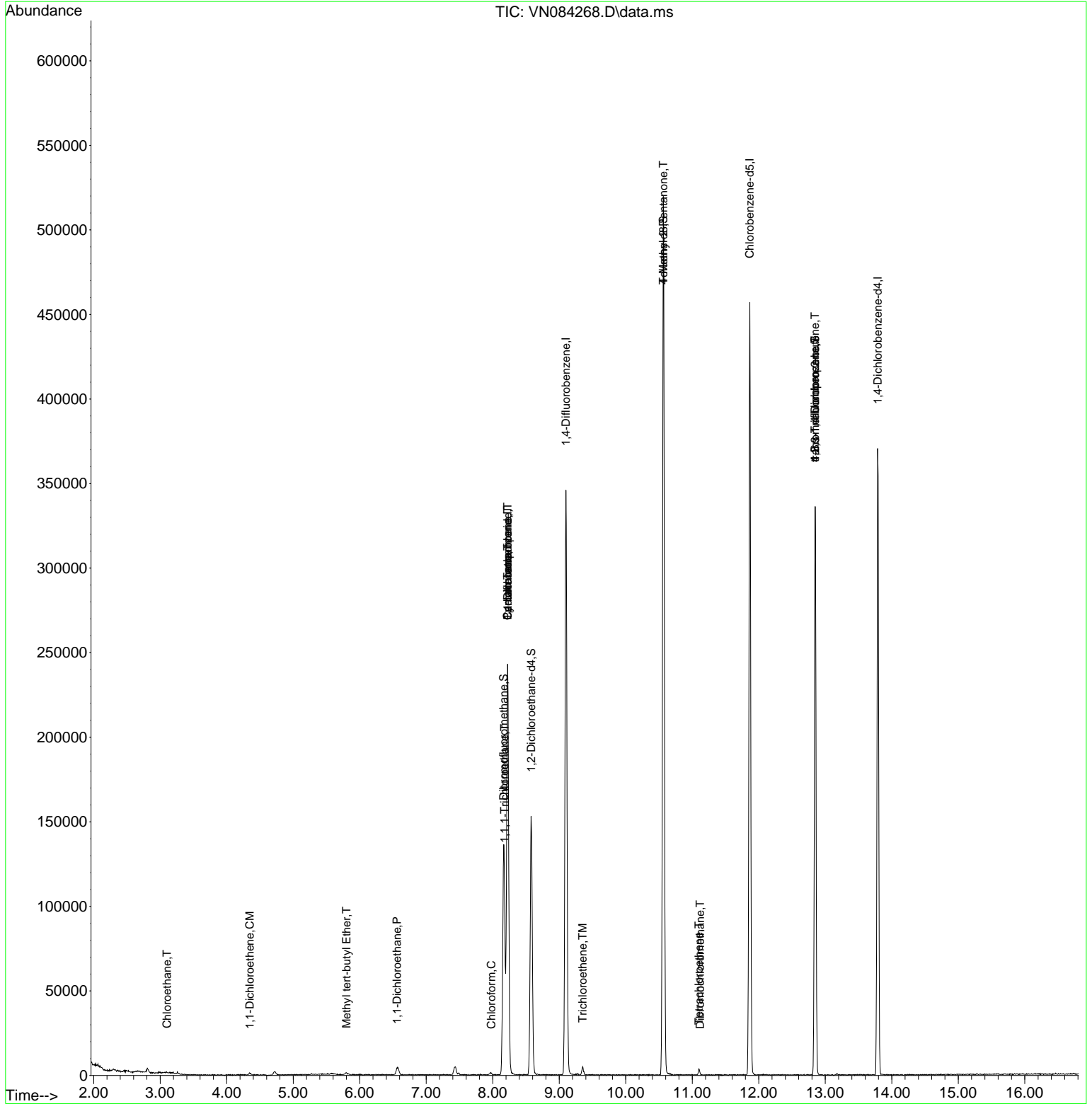
Compound	R.T.	QIon	Response	Conc	Units	Dev(Min)
-----						
Internal Standards						
1) Pentafluorobenzene	8.224	168	167538	50.000	ug/l	0.00
34) 1,4-Difluorobenzene	9.100	114	290349	50.000	ug/l	0.00
63) Chlorobenzene-d5	11.865	117	252289	50.000	ug/l	0.00
72) 1,4-Dichlorobenzene-d4	13.788	152	97632	50.000	ug/l	0.00
System Monitoring Compounds						
33) 1,2-Dichloroethane-d4	8.577	65	126356	50.867	ug/l	0.00
Spiked Amount	50.000	Range 74 - 125	Recovery	=	101.740%	
35) Dibromofluoromethane	8.165	113	97517	50.945	ug/l	0.00
Spiked Amount	50.000	Range 75 - 124	Recovery	=	101.880%	
50) Toluene-d8	10.565	98	353728	50.228	ug/l	0.00
Spiked Amount	50.000	Range 86 - 113	Recovery	=	100.460%	
62) 4-Bromofluorobenzene	12.847	95	118543	46.204	ug/l	0.00
Spiked Amount	50.000	Range 77 - 121	Recovery	=	92.400%	
Target Compounds						
						Qvalue
6) Chloroethane	3.101	64	777	0.495	ug/l #	45
12) 1,1-Dichloroethene	4.348	96	670	0.355	ug/l	88
19) Methyl tert-butyl Ether	5.800	73	1921	0.302	ug/l #	89
24) 1,1-Dichloroethane	6.559	63	7150	1.887	ug/l #	87
30) Chloroform	7.977	83	1493	0.379	ug/l #	62
31) Cyclohexane	8.224	56	4189	1.138	ug/l #	25
32) 1,1,1-Trichloroethane	8.177	97	715	0.202	ug/l #	23
36) 1,1-Dichloropropene	8.224	75	14713	5.292	ug/l #	50
38) Carbon Tetrachloride	8.224	117	18959	6.216	ug/l #	17
44) Trichloroethene	9.353	130	1744	0.862	ug/l	94
51) 4-Methyl-2-Pentanone	10.565	43	1684	0.620	ug/l #	1
60) Dibromochloromethane	11.118	129	739	0.330	ug/l #	11
64) Tetrachloroethene	11.100	164	894	0.509	ug/l #	52
76) 1,2,3-Trichloropropane	12.847	75	62418	31.316	ug/l #	1
81) trans-1,4-Dichloro-2-b...	12.847	75	62418	75.078	ug/l #	11
-----						

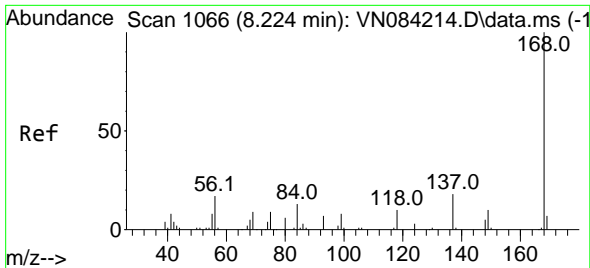
(#) = qualifier out of range (m) = manual integration (+) = signals summed

Data Path : Z:\voasrv\HPCHEM1\MSVOA\_N\Data\VN100224\  
 Data File : VN084268.D  
 Acq On : 02 Oct 2024 16:33  
 Operator : JC\MD  
 Sample : P4226-11  
 Misc : 5.0mL/MSVOA\_N/WATER  
 ALS Vial : 14 Sample Multiplier: 1

Instrument :  
 MSVOA\_N  
 ClientSampleId :

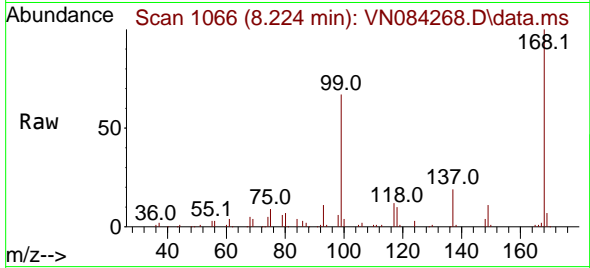
Quant Time: Oct 03 02:01:28 2024  
 Quant Method : Z:\voasrv\HPCHEM1\MSVOA\_N\methods\82N093024W.M  
 Quant Title : SW846 8260  
 QLast Update : Tue Oct 01 07:11:01 2024  
 Response via : Initial Calibration



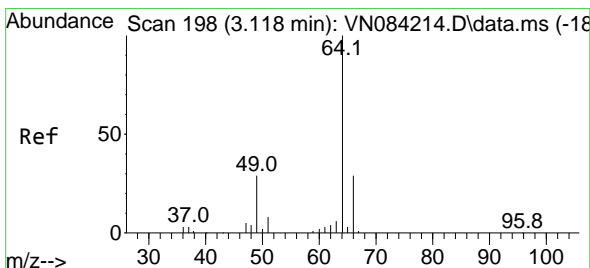
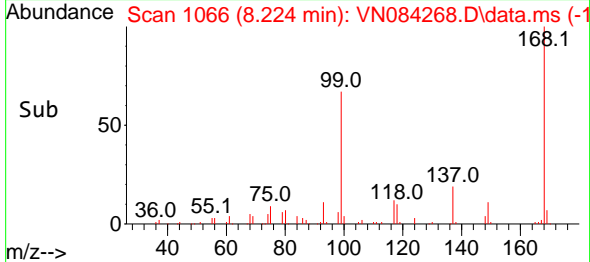
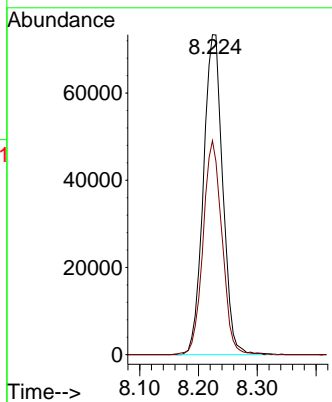


#1  
 Pentafluorobenzene  
 Concen: 50.000 ug/l  
 RT: 8.224 min Scan# 1066  
 Delta R.T. -0.000 min  
 Lab File: VN084268.D  
 Acq: 02 Oct 2024 16:33

Instrument : MSVOA\_N  
 ClientSampleId :

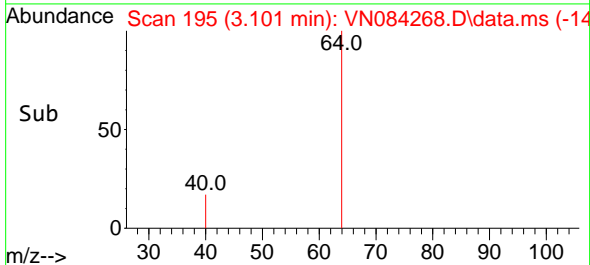
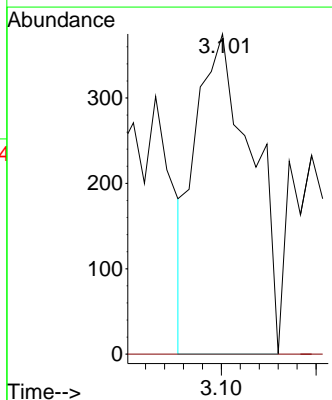
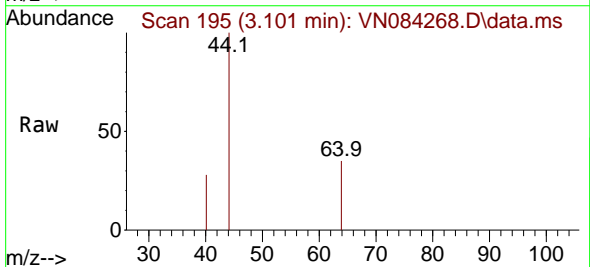


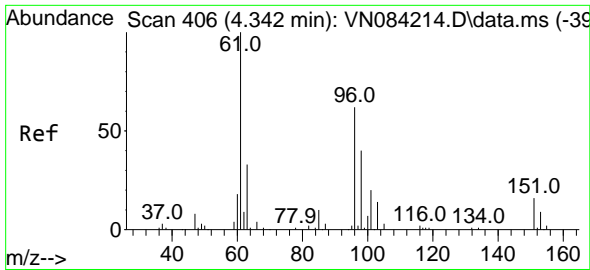
Tgt Ion:168 Resp: 167538  
 Ion Ratio Lower Upper  
 168 100  
 99 66.9 54.2 81.2



#6  
 Chloroethane  
 Concen: 0.495 ug/l  
 RT: 3.101 min Scan# 195  
 Delta R.T. -0.018 min  
 Lab File: VN084268.D  
 Acq: 02 Oct 2024 16:33

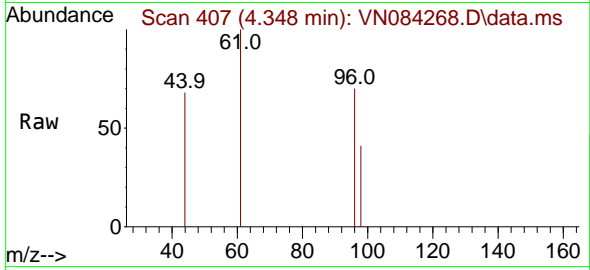
Tgt Ion: 64 Resp: 777  
 Ion Ratio Lower Upper  
 64 100  
 66 0.0 23.5 35.3#



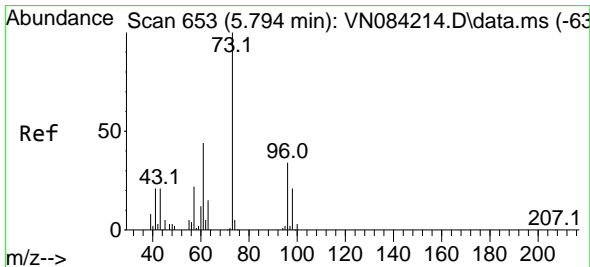
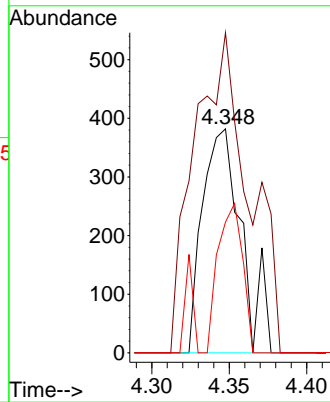
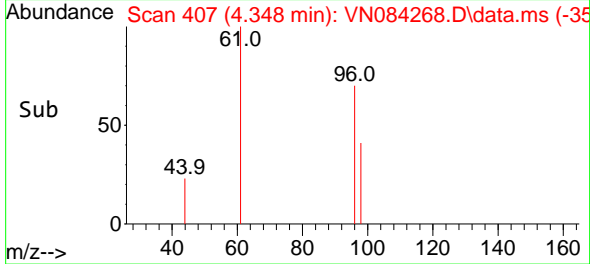


#12  
 1,1-Dichloroethene  
 Concen: 0.355 ug/l  
 RT: 4.348 min Scan# 406  
 Delta R.T. 0.006 min  
 Lab File: VN084268.D  
 Acq: 02 Oct 2024 16:33

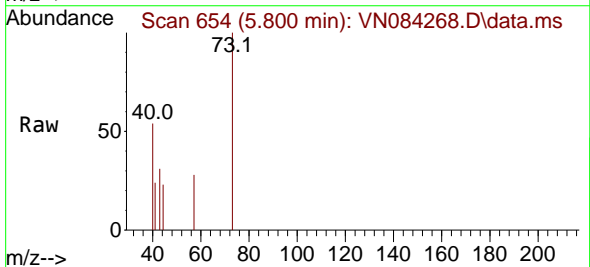
Instrument :  
 MSVOA\_N  
 ClientSampleId :



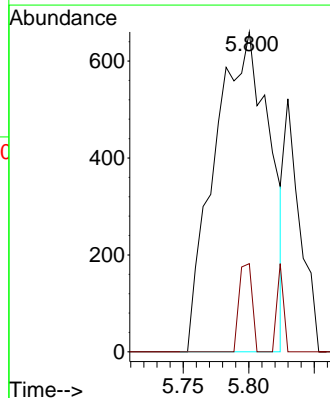
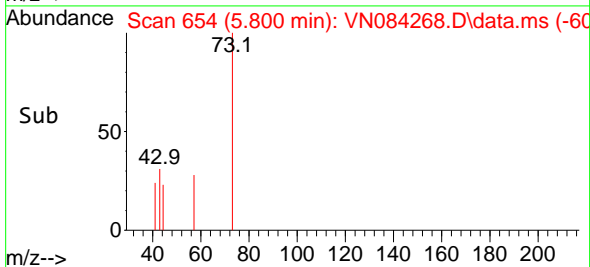
Tgt Ion: 96 Resp: 670  
 Ion Ratio Lower Upper  
 96 100  
 61 142.9 128.6 192.8  
 98 58.4 51.7 77.5

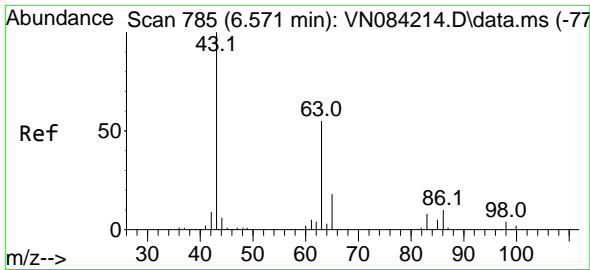


#19  
 Methyl tert-butyl Ether  
 Concen: 0.302 ug/l  
 RT: 5.800 min Scan# 654  
 Delta R.T. 0.006 min  
 Lab File: VN084268.D  
 Acq: 02 Oct 2024 16:33



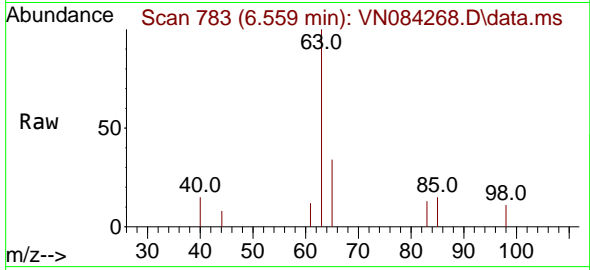
Tgt Ion: 73 Resp: 1921  
 Ion Ratio Lower Upper  
 73 100  
 57 27.6 17.7 26.5#





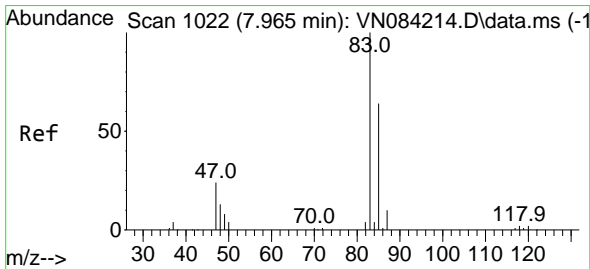
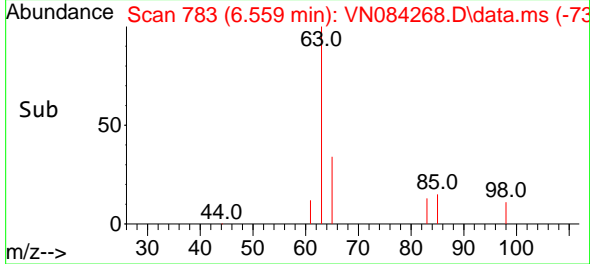
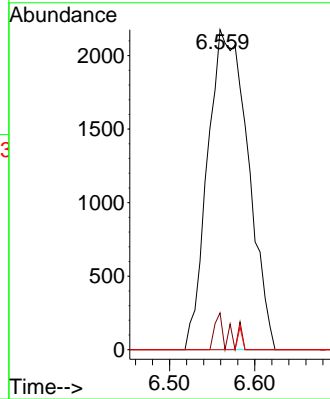
#24  
 1,1-Dichloroethane  
 Concen: 1.887 ug/l  
 RT: 6.559 min Scan# 71  
 Delta R.T. -0.012 min  
 Lab File: VN084268.D  
 Acq: 02 Oct 2024 16:33

Instrument :  
 MSVOA\_N  
 ClientSampleId :



Tgt Ion: 63 Resp: 7150

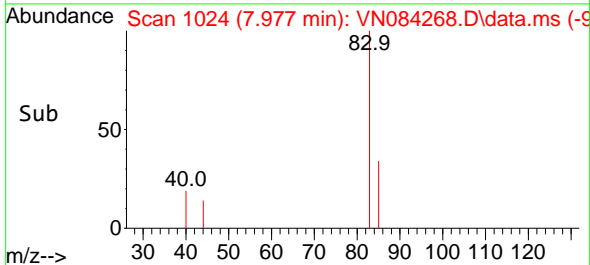
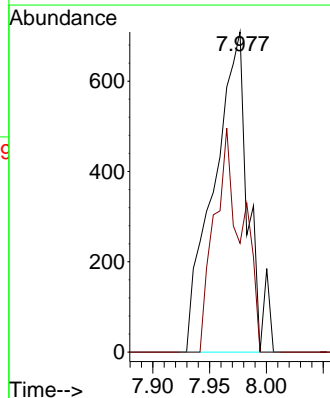
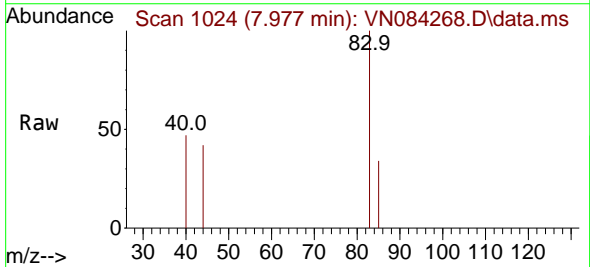
Ion	Ratio	Lower	Upper
63	100		
98	11.5	3.4	10.2#
100	0.0	2.0	5.8#

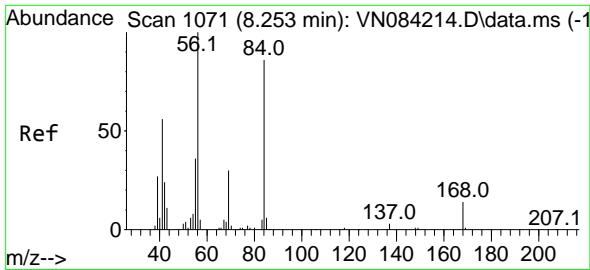


#30  
 Chloroform  
 Concen: 0.379 ug/l  
 RT: 7.977 min Scan# 1024  
 Delta R.T. 0.012 min  
 Lab File: VN084268.D  
 Acq: 02 Oct 2024 16:33

Tgt Ion: 83 Resp: 1493

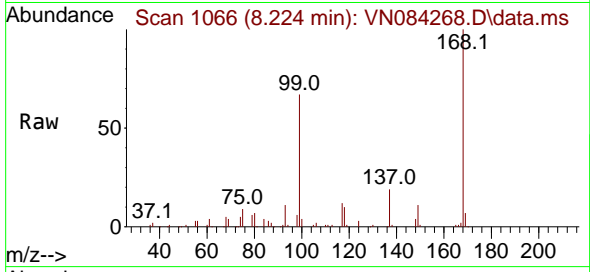
Ion	Ratio	Lower	Upper
83	100		
85	34.0	51.0	76.4#



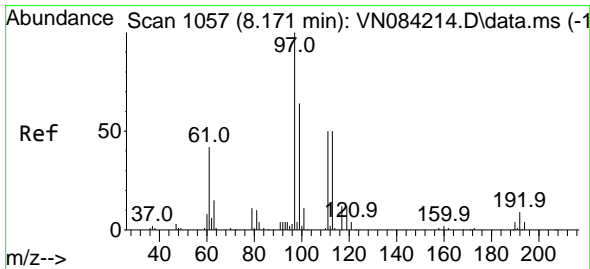
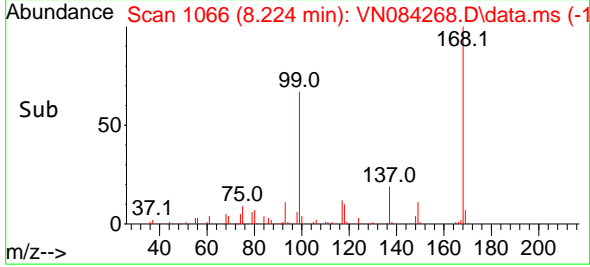
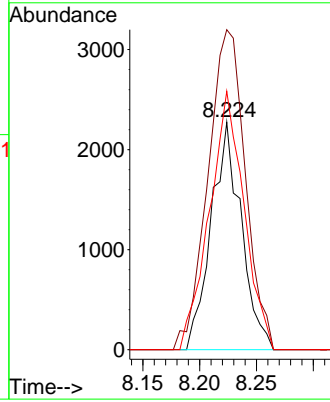


#31  
 Cyclohexane  
 Concen: 1.138 ug/l  
 RT: 8.224 min Scan# 1066  
 Delta R.T. -0.029 min  
 Lab File: VN084268.D  
 Acq: 02 Oct 2024 16:33

Instrument :  
 MSVOA\_N  
 ClientSampleId :

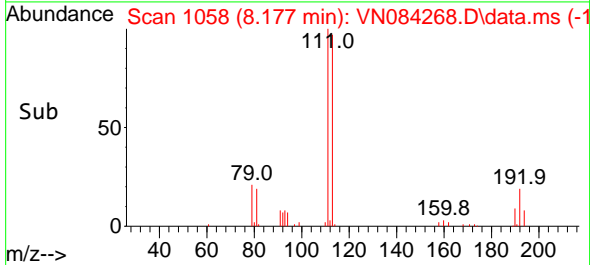
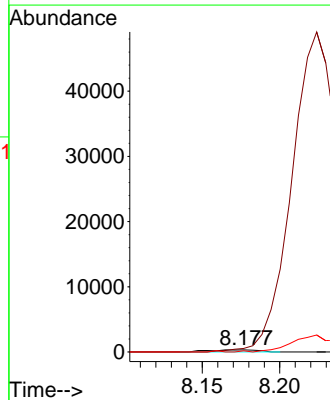
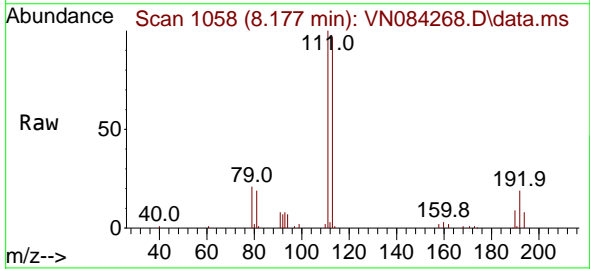


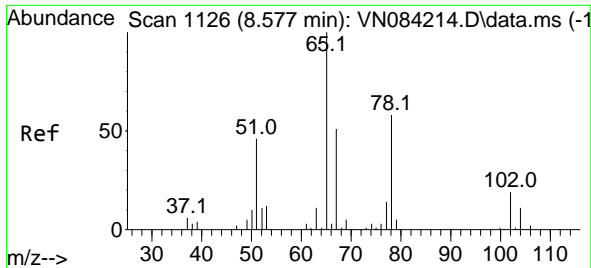
Tgt Ion: 56 Resp: 4189  
 Ion Ratio Lower Upper  
 56 100  
 69 140.6 23.8 35.6#  
 84 113.6 68.8 103.2#



#32  
 1,1,1-Trichloroethane  
 Concen: 0.202 ug/l  
 RT: 8.177 min Scan# 1058  
 Delta R.T. 0.006 min  
 Lab File: VN084268.D  
 Acq: 02 Oct 2024 16:33

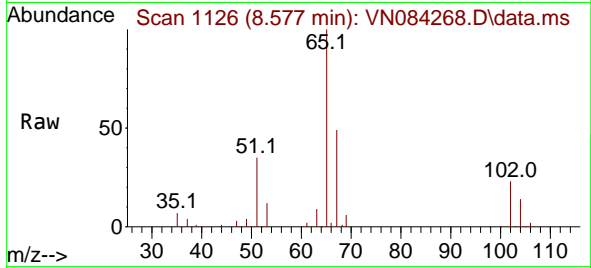
Tgt Ion: 97 Resp: 715  
 Ion Ratio Lower Upper  
 97 100  
 99 0.0 51.2 76.8#  
 61 0.0 37.5 56.3#



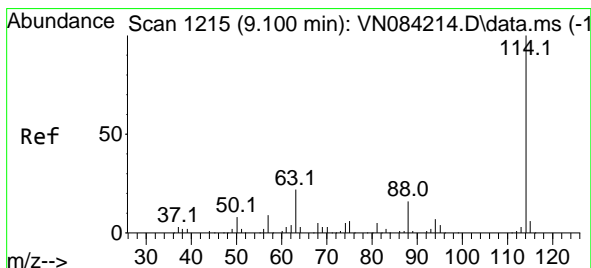
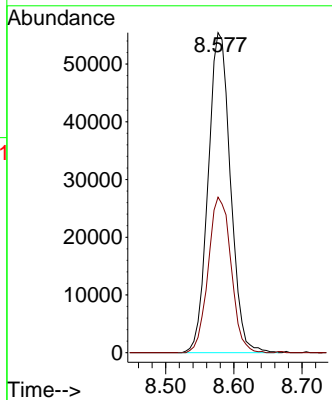
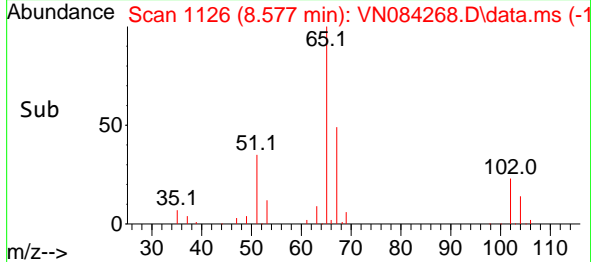


#33  
 1,2-Dichloroethane-d4  
 Concen: 50.867 ug/l  
 RT: 8.577 min Scan# 1126  
 Delta R.T. 0.000 min  
 Lab File: VN084268.D  
 Acq: 02 Oct 2024 16:33

Instrument : MSVOA\_N  
 ClientSampleId :

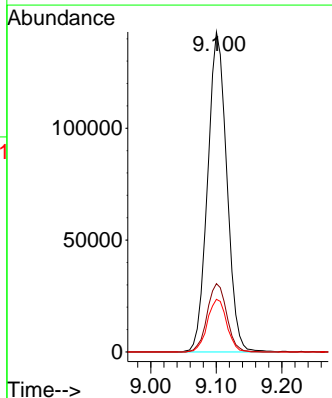
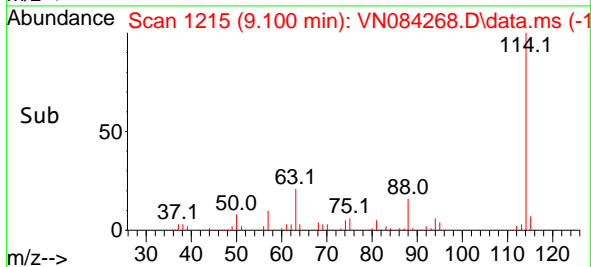
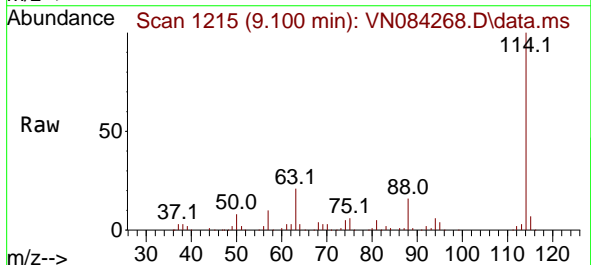


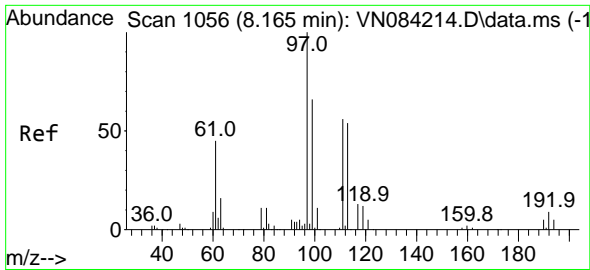
Tgt Ion: 65 Resp: 126356  
 Ion Ratio Lower Upper  
 65 100  
 67 49.8 0.0 102.0



#34  
 1,4-Difluorobenzene  
 Concen: 50.000 ug/l  
 RT: 9.100 min Scan# 1215  
 Delta R.T. 0.000 min  
 Lab File: VN084268.D  
 Acq: 02 Oct 2024 16:33

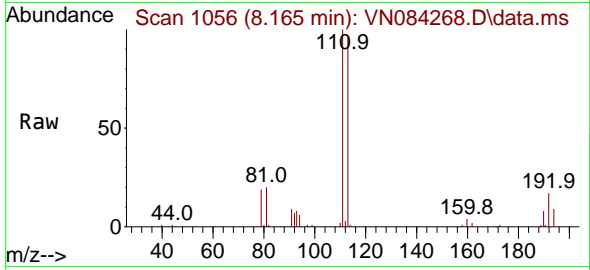
Tgt Ion: 114 Resp: 290349  
 Ion Ratio Lower Upper  
 114 100  
 63 21.4 0.0 43.8  
 88 16.4 0.0 31.6



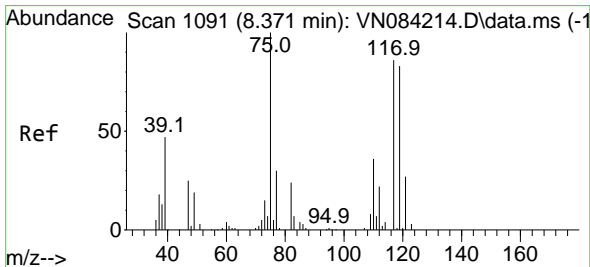
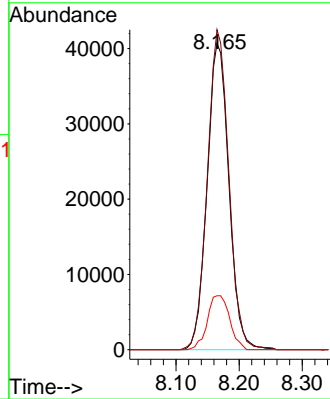
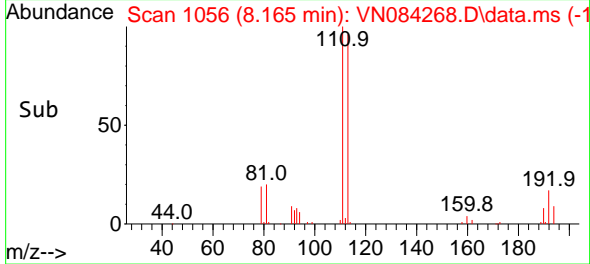


#35  
 Dibromofluoromethane  
 Concen: 50.945 ug/l  
 RT: 8.165 min Scan# 1066  
 Delta R.T. 0.000 min  
 Lab File: VN084268.D  
 Acq: 02 Oct 2024 16:33

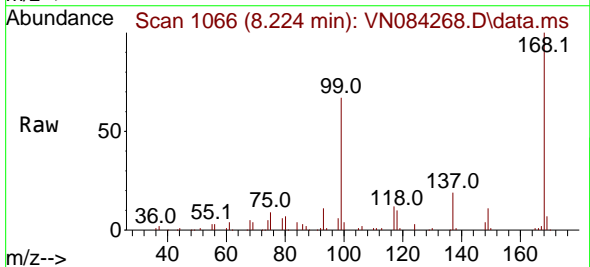
Instrument :  
 MSVOA\_N  
 ClientSampleId :



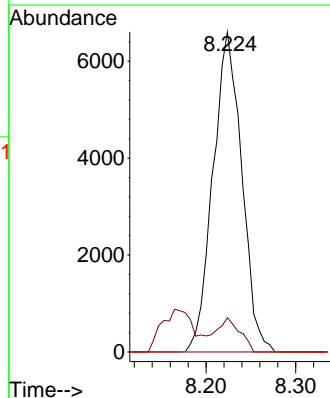
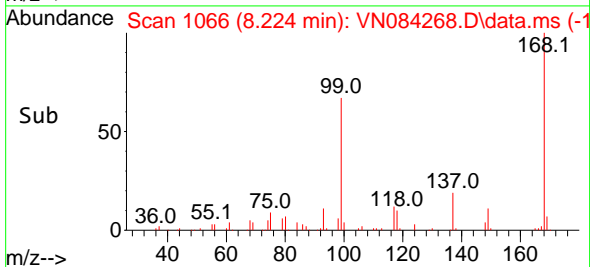
Tgt Ion:113 Resp: 97517  
 Ion Ratio Lower Upper  
 113 100  
 111 103.1 83.3 124.9  
 192 18.1 13.5 20.3



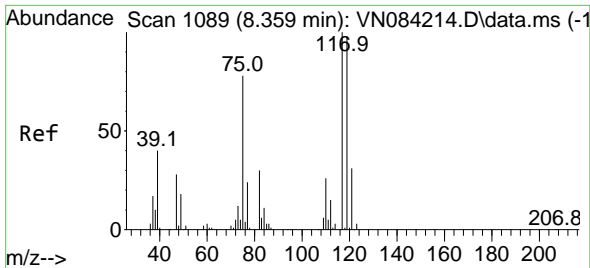
#36  
 1,1-Dichloropropene  
 Concen: 5.292 ug/l  
 RT: 8.224 min Scan# 1066  
 Delta R.T. -0.147 min  
 Lab File: VN084268.D  
 Acq: 02 Oct 2024 16:33



Tgt Ion: 75 Resp: 14713  
 Ion Ratio Lower Upper  
 75 100  
 110 8.8 16.9 50.7#  
 77 0.0 24.7 37.1#

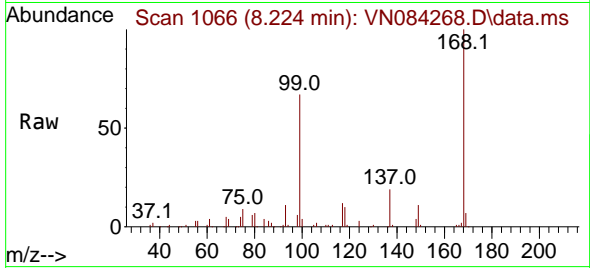




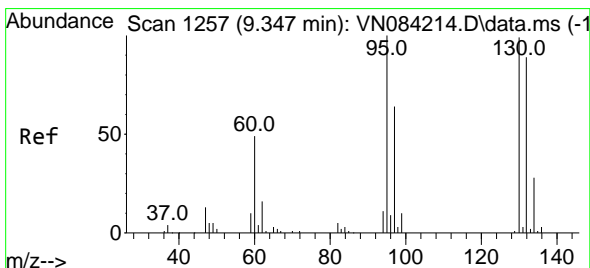
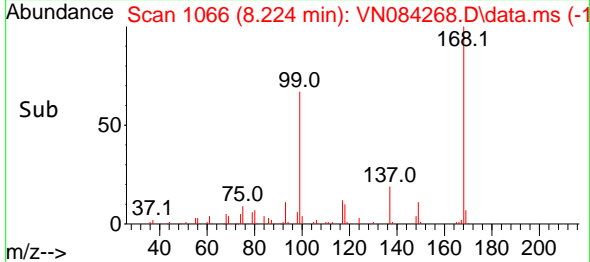
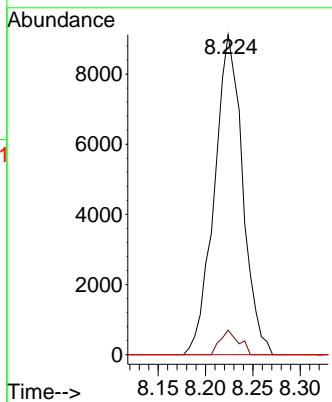


#38  
 Carbon Tetrachloride  
 Concen: 6.216 ug/l  
 RT: 8.224 min Scan# 1066  
 Delta R.T. -0.135 min  
 Lab File: VN084268.D  
 Acq: 02 Oct 2024 16:33

Instrument : MSVOA\_N  
 ClientSampleId :

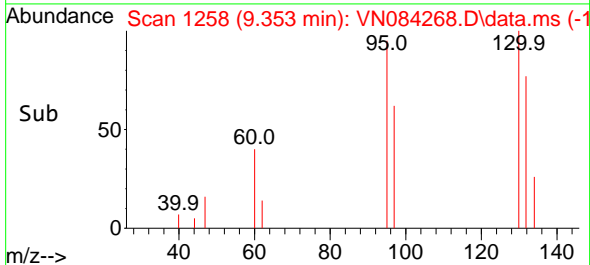
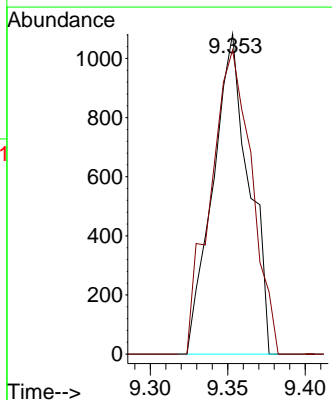
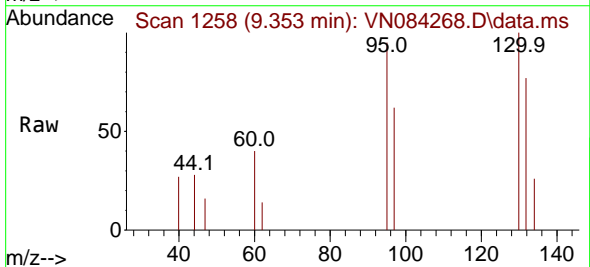


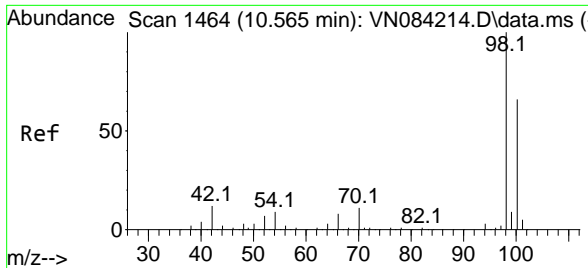
Tgt Ion:117 Resp: 18959  
 Ion Ratio Lower Upper  
 117 100  
 119 7.6 78.7 118.1#  
 121 0.0 24.4 36.6#



#44  
 Trichloroethene  
 Concen: 0.862 ug/l  
 RT: 9.353 min Scan# 1258  
 Delta R.T. 0.006 min  
 Lab File: VN084268.D  
 Acq: 02 Oct 2024 16:33

Tgt Ion:130 Resp: 1744  
 Ion Ratio Lower Upper  
 130 100  
 95 95.0 0.0 203.0

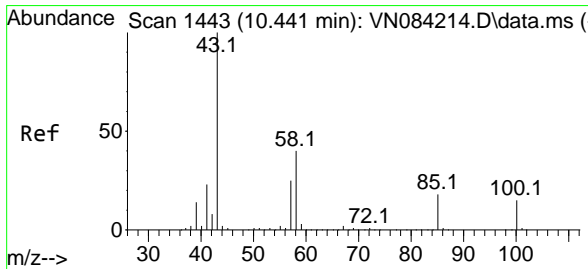
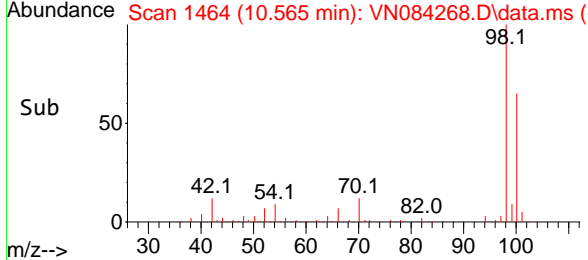
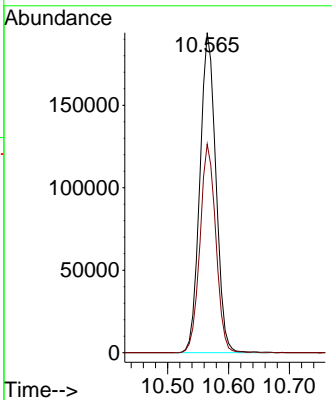
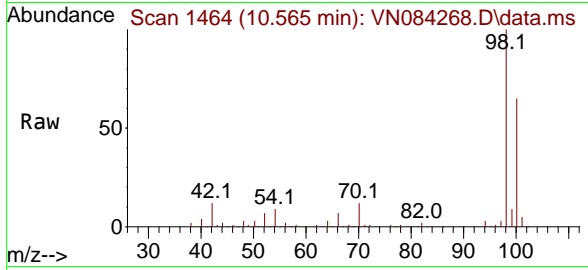




#50  
 Toluene-d8  
 Concen: 50.228 ug/l  
 RT: 10.565 min Scan# 1464  
 Delta R.T. 0.000 min  
 Lab File: VN084268.D  
 Acq: 02 Oct 2024 16:33

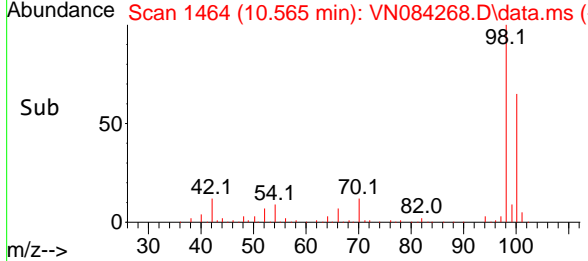
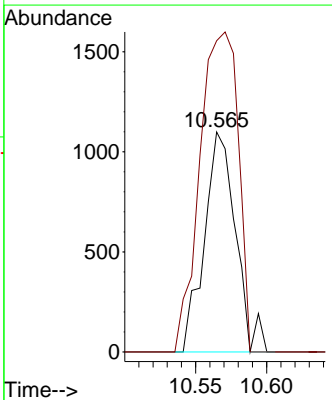
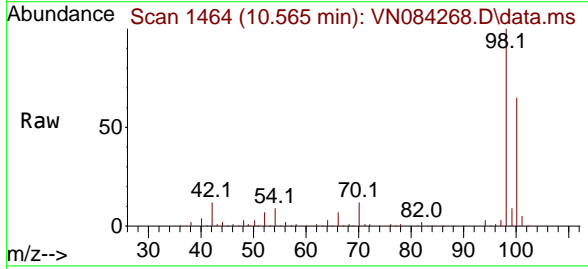
Instrument : MSVOA\_N  
 ClientSampleId :

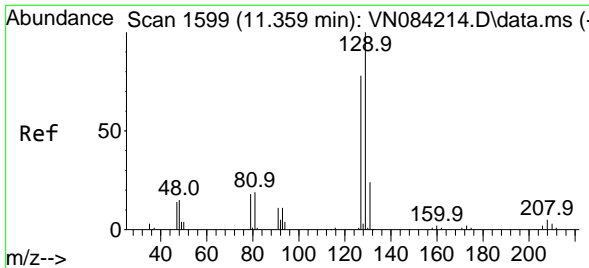
Tgt Ion: 98 Resp: 353728  
 Ion Ratio Lower Upper  
 98 100  
 100 64.4 52.7 79.1



#51  
 4-Methyl-2-Pentanone  
 Concen: 0.620 ug/l  
 RT: 10.565 min Scan# 1464  
 Delta R.T. 0.124 min  
 Lab File: VN084268.D  
 Acq: 02 Oct 2024 16:33

Tgt Ion: 43 Resp: 1684  
 Ion Ratio Lower Upper  
 43 100  
 58 178.6 31.6 47.4#

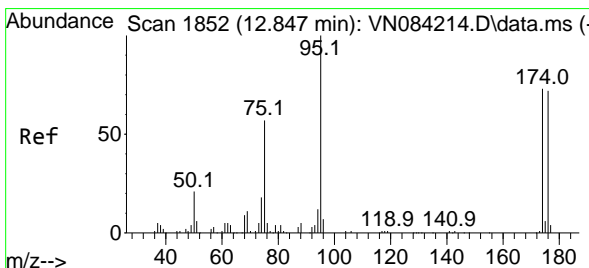
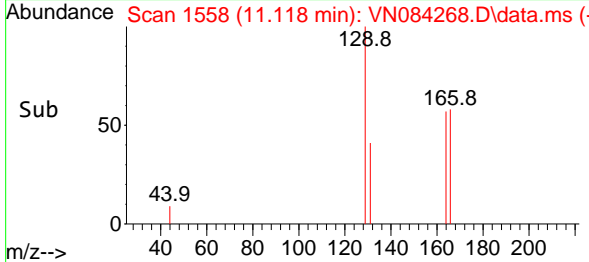
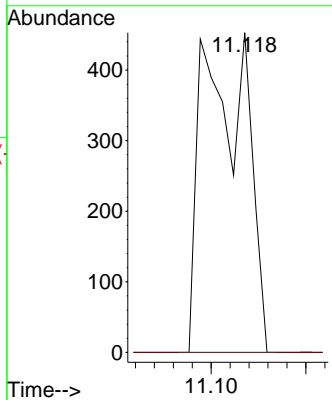
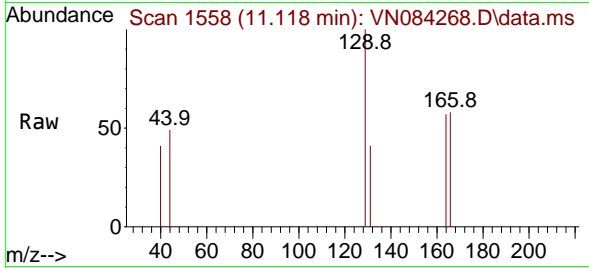




#60  
 Dibromochloromethane  
 Concen: 0.330 ug/l  
 RT: 11.118 min Scan# 1118  
 Delta R.T. -0.241 min  
 Lab File: VN084268.D  
 Acq: 02 Oct 2024 16:33

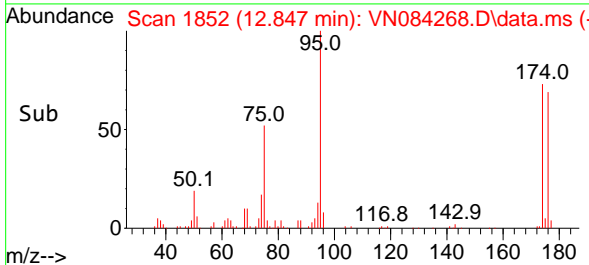
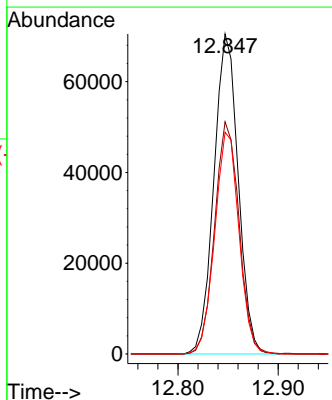
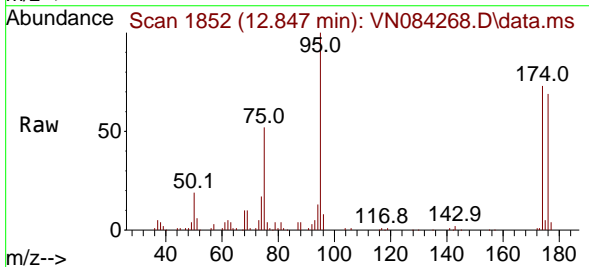
Instrument :  
 MSVOA\_N  
 ClientSampleId :

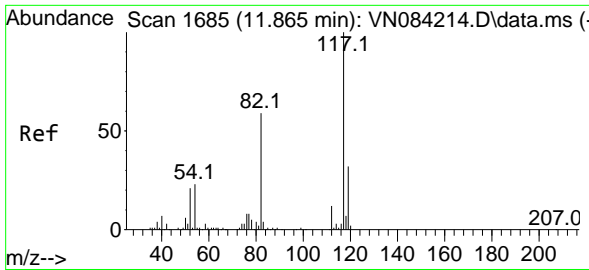
Tgt Ion:129 Resp: 739  
 Ion Ratio Lower Upper  
 129 100  
 127 0.0 38.3 114.9#



#62  
 4-Bromofluorobenzene  
 Concen: 46.204 ug/l  
 RT: 12.847 min Scan# 1852  
 Delta R.T. 0.000 min  
 Lab File: VN084268.D  
 Acq: 02 Oct 2024 16:33

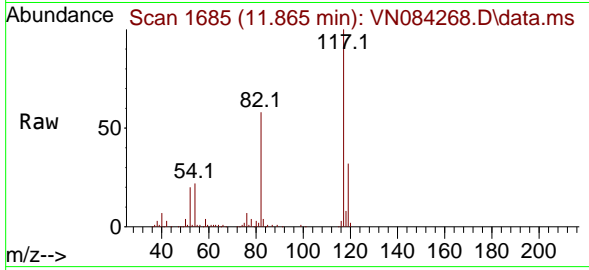
Tgt Ion: 95 Resp: 118543  
 Ion Ratio Lower Upper  
 95 100  
 174 73.0 0.0 145.2  
 176 69.3 0.0 140.0





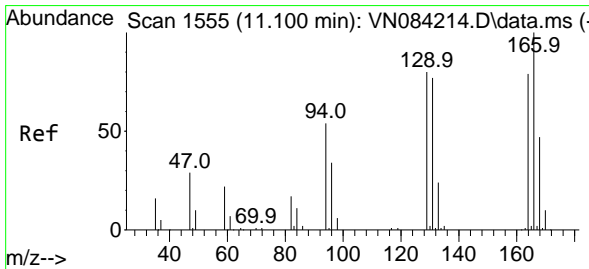
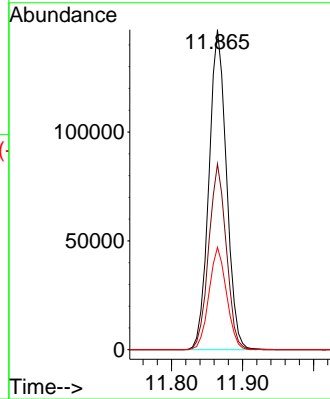
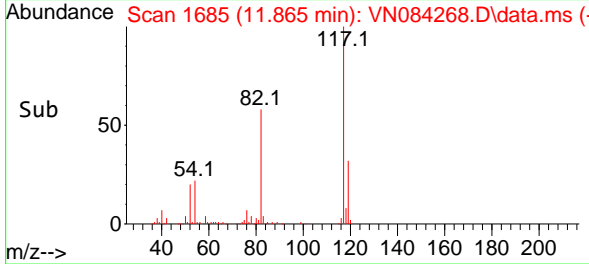
#63  
 Chlorobenzene-d5  
 Concen: 50.000 ug/l  
 RT: 11.865 min Scan# 11  
 Delta R.T. 0.000 min  
 Lab File: VN084268.D  
 Acq: 02 Oct 2024 16:33

Instrument :  
 MSVOA\_N  
 ClientSampleId :

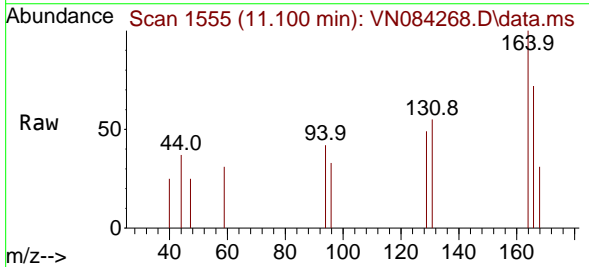


Tgt Ion:117 Resp: 252289

Ion	Ratio	Lower	Upper
117	100		
82	58.0	47.2	70.8
119	32.0	25.4	38.0

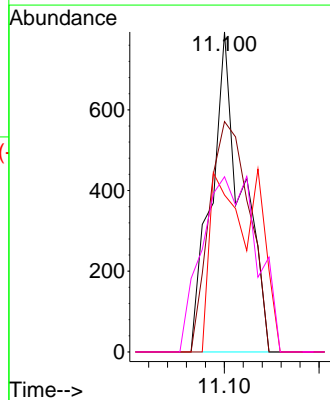
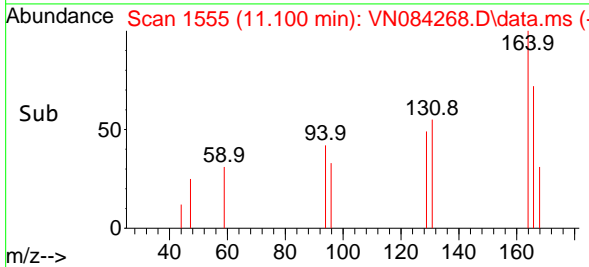


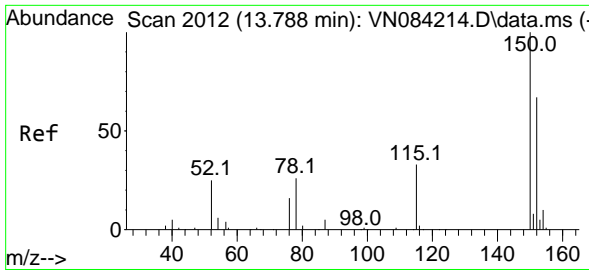
#64  
 Tetrachloroethene  
 Concen: 0.509 ug/l  
 RT: 11.100 min Scan# 1555  
 Delta R.T. 0.000 min  
 Lab File: VN084268.D  
 Acq: 02 Oct 2024 16:33



Tgt Ion:164 Resp: 894

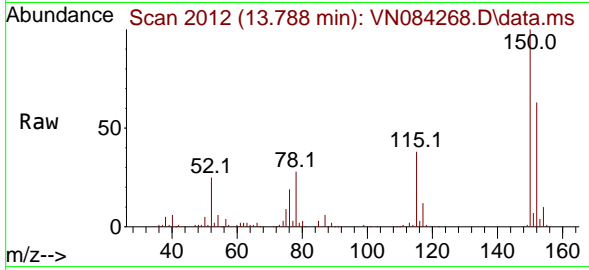
Ion	Ratio	Lower	Upper
164	100		
166	72.0	101.0	151.4#
129	49.1	80.8	121.2#
131	54.7	78.1	117.1#



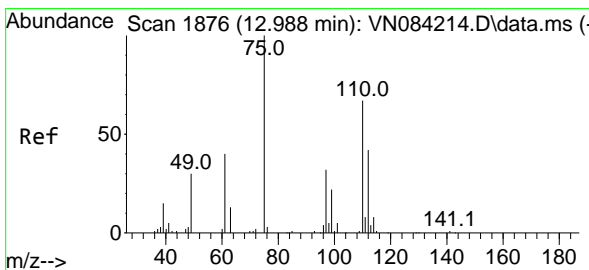
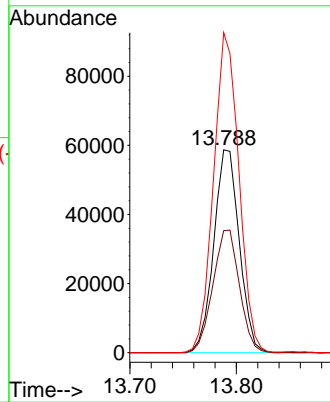
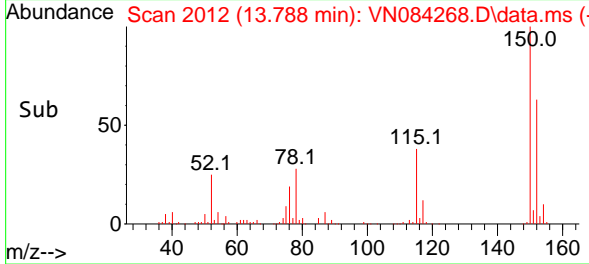


#72  
 1,4-Dichlorobenzene-d4  
 Concen: 50.000 ug/l  
 RT: 13.788 min Scan# 2012  
 Delta R.T. 0.000 min  
 Lab File: VN084268.D  
 Acq: 02 Oct 2024 16:33

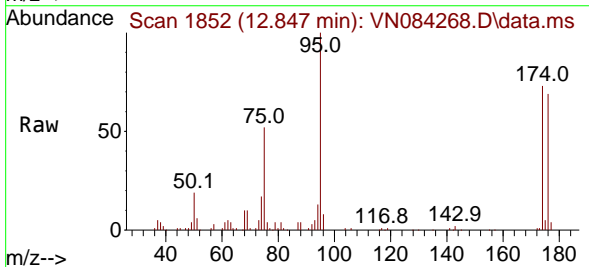
Instrument :  
 MSVOA\_N  
 ClientSampleId :



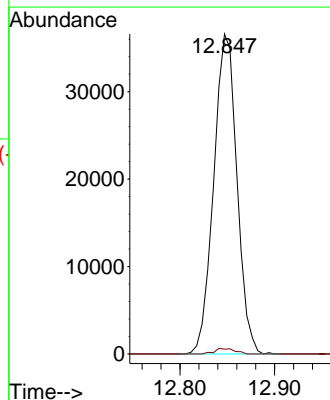
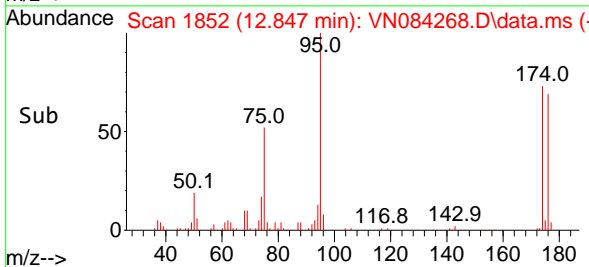
Tgt Ion:152 Resp: 97632  
 Ion Ratio Lower Upper  
 152 100  
 115 62.9 31.3 93.9  
 150 157.0 0.0 349.8

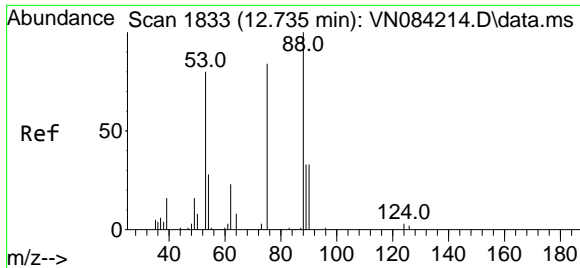


#76  
 1,2,3-Trichloropropane  
 Concen: 31.316 ug/l  
 RT: 12.847 min Scan# 1852  
 Delta R.T. -0.141 min  
 Lab File: VN084268.D  
 Acq: 02 Oct 2024 16:33



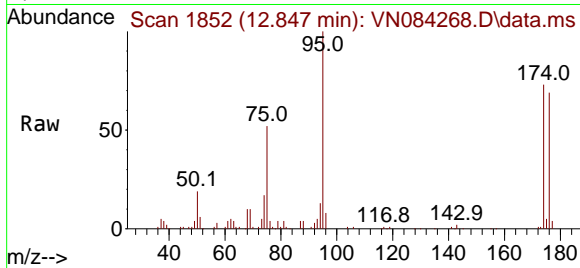
Tgt Ion: 75 Resp: 62418  
 Ion Ratio Lower Upper  
 75 100  
 77 1.5 96.9 290.7#





#81  
 trans-1,4-Dichloro-2-butene  
 Concen: 75.078 ug/l  
 RT: 12.847 min Scan# 1833  
 Delta R.T. 0.112 min  
 Lab File: VN084268.D  
 Acq: 02 Oct 2024 16:33

Instrument :  
 MSVOA\_N  
 ClientSampleId :



Tgt Ion: 75 Resp: 62418  
 Ion Ratio Lower Upper  
 75 100  
 53 0.0 78.0 117.0#  
 89 0.0 35.5 53.3#

