

Data Path : Z:\VOASRV\HPCHEM1\MSVOA N\DATA\VN100319\
 Data File : VN058507.D
 Acq On : 3 Oct 2019 14:15
 Operator : JC/SP
 Sample : K5095-04DL 1000X
 Misc : 5.00mL/MSVOA N/WATER
 ALS Vial : 7 Sample Multiplier: 1

Instrument :
 MSVOA_N
ClientSampleId :
 COMPOSITE-4DL

Manual Integrations
APPROVED
 MMDadoda
 10/4/2019 9:30:14 AM

Quant Time: Oct 04 04:33:20 2019
 Quant Method : Z:\VOASRV\HPCHEM1\MSVOA_N\METHODS\82N092719W.M
 Quant Title : SW846 8260
 QLast Update : Mon Sep 30 08:07:38 2019
 Response via : Initial Calibration

Internal Standards	R.T.	QIon	Response	Conc	Units	Dev(Min)
1) Pentafluorobenzene	7.65	168	344389	50.00	ug/l	0.00
34) 1,4-Difluorobenzene	8.57	114	571881	50.00	ug/l	0.00
63) Chlorobenzene-d5	11.41	117	491611	50.00	ug/l	0.00
72) 1,4-Dichlorobenzene-d4	13.35	152	179526	50.00	ug/l	0.00

System Monitoring Compounds

33) 1,2-Dichloroethane-d4	8.01	65	255647	50.80	ug/l	0.00
Spiked Amount	50.000		Recovery	=	101.60%	
35) Dibromofluoromethane	7.57	113	182266	52.00	ug/l	0.00
Spiked Amount	50.000		Recovery	=	104.00%	
50) Toluene-d8	10.08	98	709464	51.67	ug/l	0.00
Spiked Amount	50.000		Recovery	=	103.34%	
62) 4-Bromofluorobenzene	12.41	95	217379	43.78	ug/l	0.00
Spiked Amount	50.000		Recovery	=	87.56%	

Target Compounds

						Qvalue
9) 1,1,2-Trichlorotrifluoroet	3.74	101	1763	0.529	ug/l #	62
12) 1,1-Dichloroethene	3.72	96	14683	4.520	ug/l	100
20) Methylene Chloride	4.54	84	2196m	0.555	ug/l	
24) 1,1-Dichloroethane	5.83	63	8831m	1.233	ug/l	
27) cis-1,2-Dichloroethene	6.81	96	11027	2.612	ug/l	91
30) Chloroform	7.35	83	2746	0.378	ug/l #	75
32) 1,1,1-Trichloroethane	7.55	97	446472	74.932	ug/l	98
40) Benzene	8.02	78	9039	0.575	ug/l	92
44) Trichloroethene	8.82	130	21018	5.415	ug/l	96
52) Toluene	10.15	92	15220	1.538	ug/l	96
55) 1,1,2-Trichloroethane	10.56	97	1247	0.346	ug/l #	87
64) Tetrachloroethene	10.63	164	259355	83.037	ug/l	97

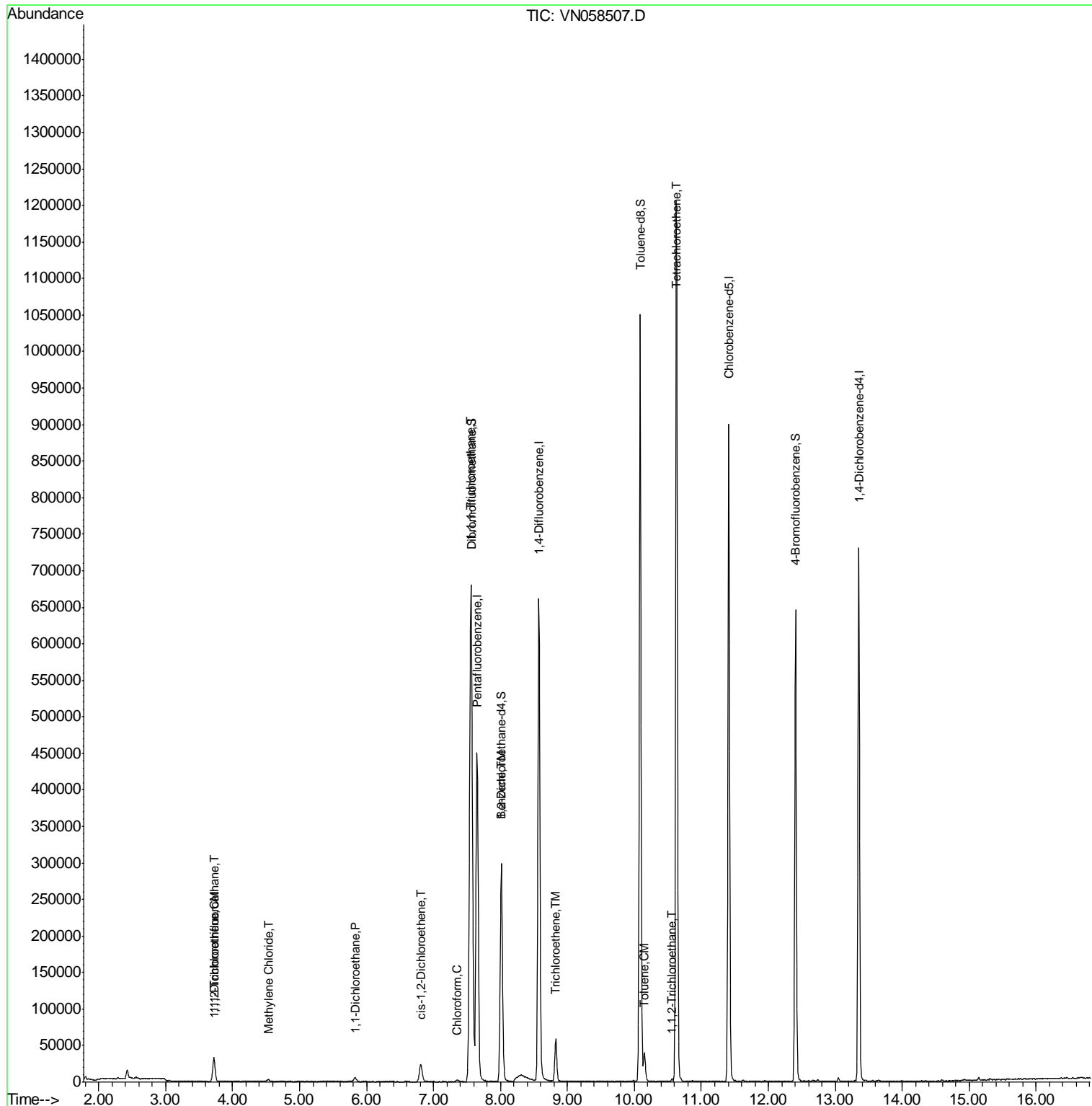
(#) = qualifier out of range (m) = manual integration (+) = signals summed

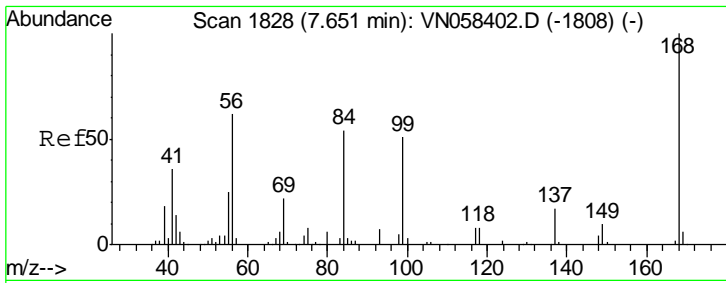
Data Path : Z:\VOASRV\HPCHEM1\MSVOA N\DATA\VN100319\
 Data File : VN058507.D
 Acq On : 3 Oct 2019 14:15
 Operator : JC/SP
 Sample : K5095-04DL 1000X
 Misc : 5.00mL/MSVOA N/WATER
 ALS Vial : 7 Sample Multiplier: 1

Instrument :
 MSVOA_N
Client Sampled :
 COMPOSITE-4DL

Manual Integrations
APPROVED
 MMDadoda
 10/4/2019 9:30:14 AM

Quant Time: Oct 04 04:33:20 2019
 Quant Method : Z:\VOASRV\HPCHEM1\MSVOA_N\METHODS\82N092719W.M
 Quant Title : SW846 8260
 QLast Update : Mon Sep 30 08:07:38 2019
 Response via : Initial Calibration





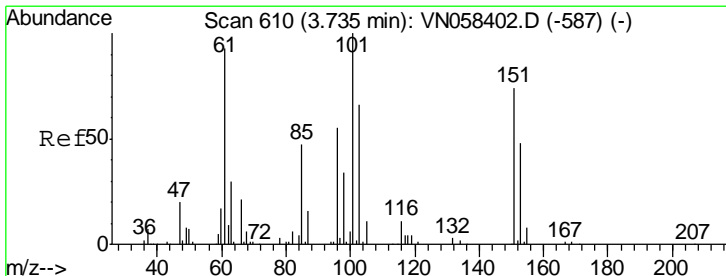
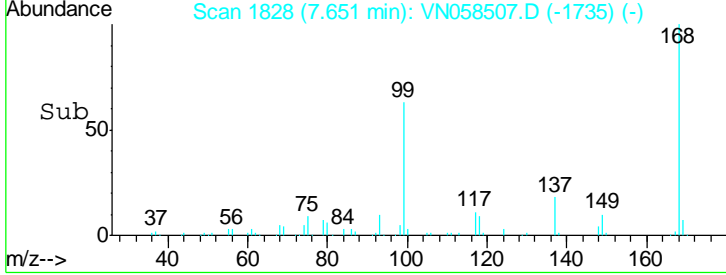
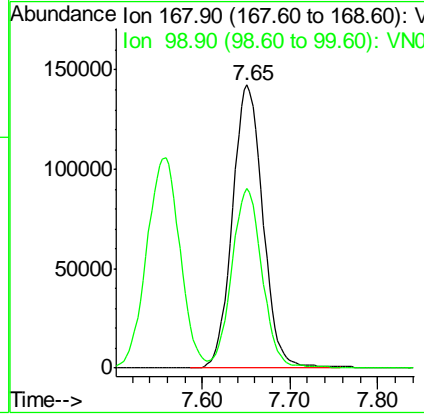
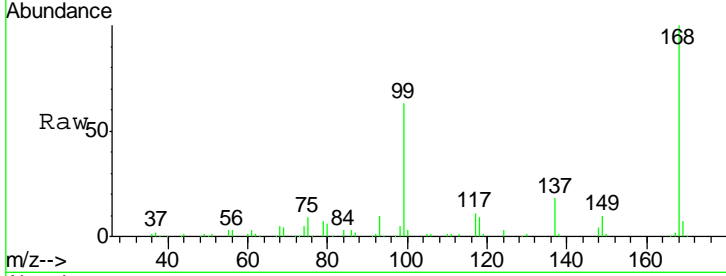
#1
 Pentafluorobenzene
 Concen: 50.000 ug/l
 RT: 7.65 min Scan# 1828
 Delta R.T. -0.00 min
 Lab File: VN058507.D
 Acq: 3 Oct 2019 14:15

Instrument :
 MSVOA_N
 ClientSampled :
 COMPOSITE-4DL

Tgt Ion	Resp	Lower	Upper
168	100		
99	62.9	47.7	71.5

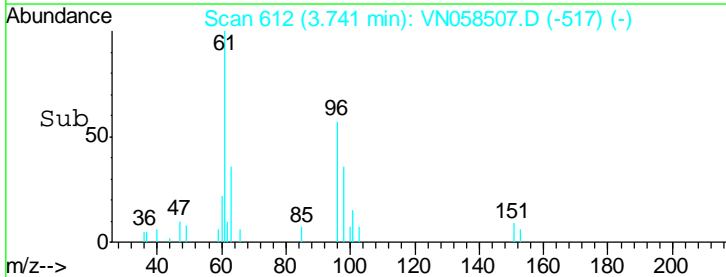
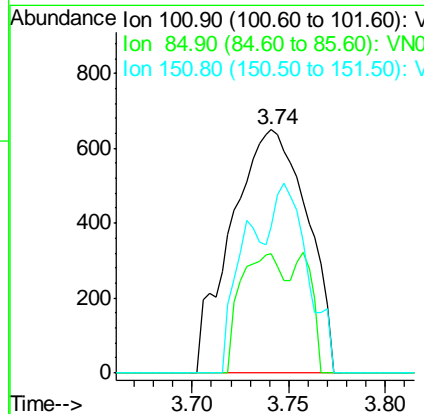
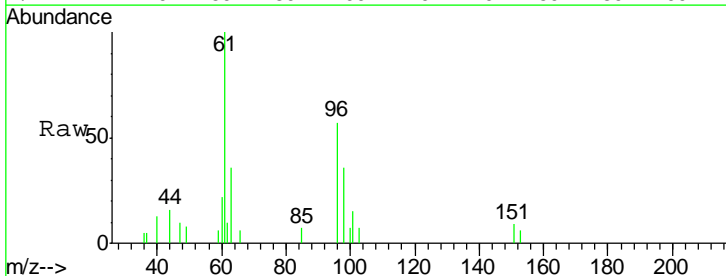
Manual Integrations
 APPROVED

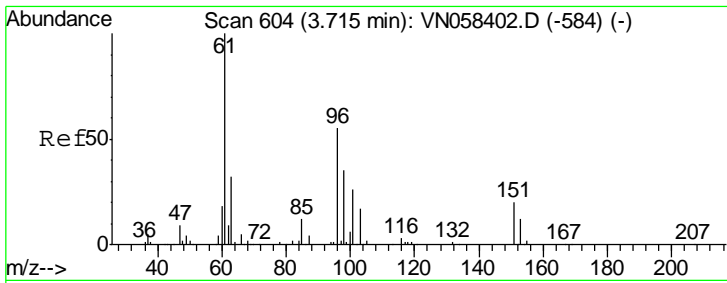
MMDadoda
 10/4/2019 9:30:14 AM



#9
 1,1,2-Trichlorotrifluoroethane
 Concen: 0.529 ug/l
 RT: 3.74 min Scan# 612
 Delta R.T. 0.01 min
 Lab File: VN058507.D
 Acq: 3 Oct 2019 14:15

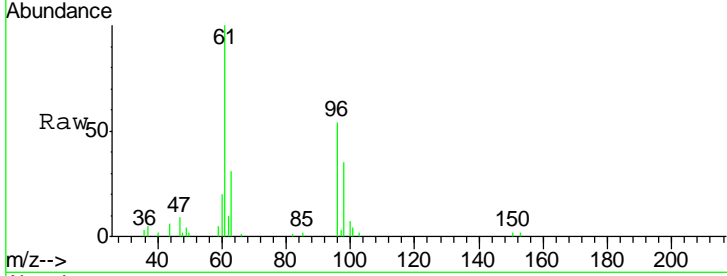
Tgt Ion	Resp	Lower	Upper
101	100		
85	27.1	36.7	55.1#
151	36.9	59.4	89.0#





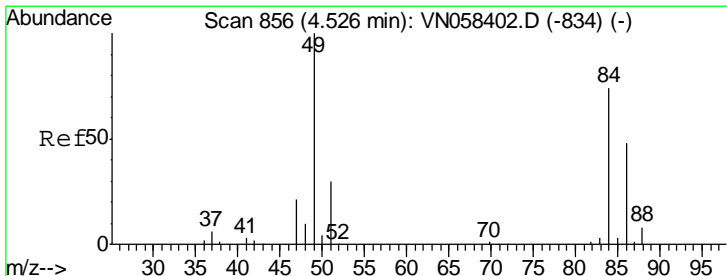
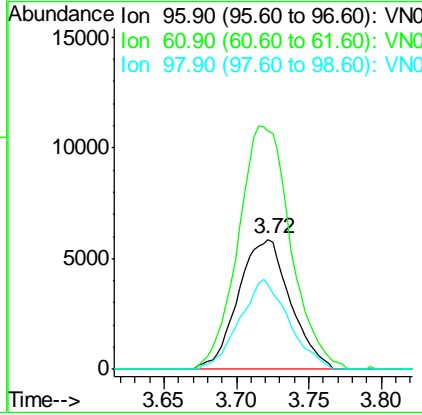
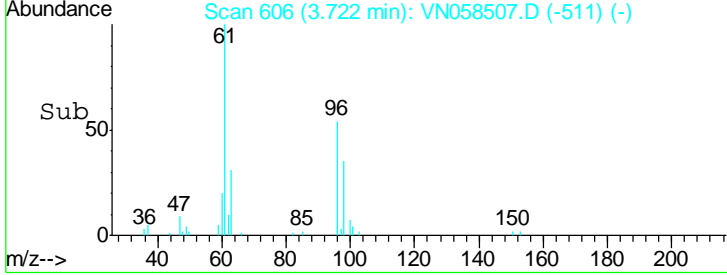
#12
 1,1-Dichloroethene
 Concen: 4.520 ug/l
 RT: 3.72 min Scan# 606
 Delta R.T. 0.01 min
 Lab File: VN058507.D
 Acq: 3 Oct 2019 14:15

Instrument : MSVOA_N
 ClientSampled : COMPOSITE-4DL

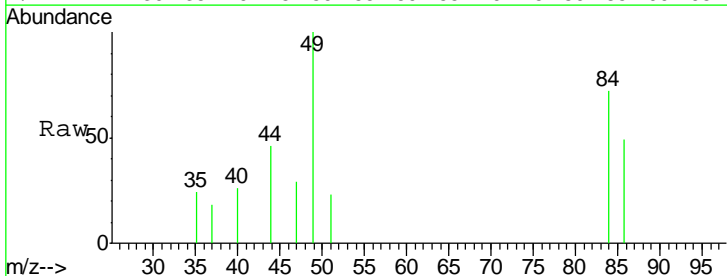


Tgt Ion	Resp	Lower	Upper
96	14683		
96	100		
61	183.8	146.7	220.1
98	65.0	51.3	76.9

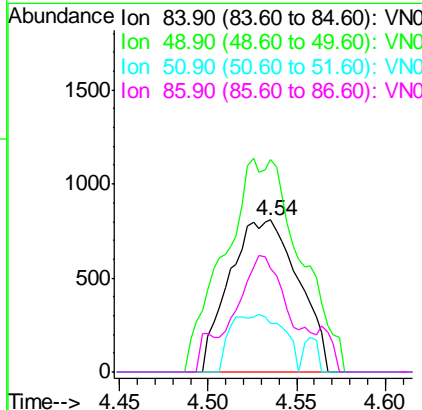
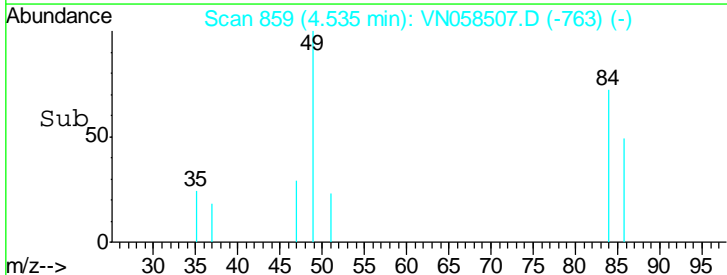
Manual Integrations
APPROVED
 MMDadoda
 10/4/2019 9:30:14 AM

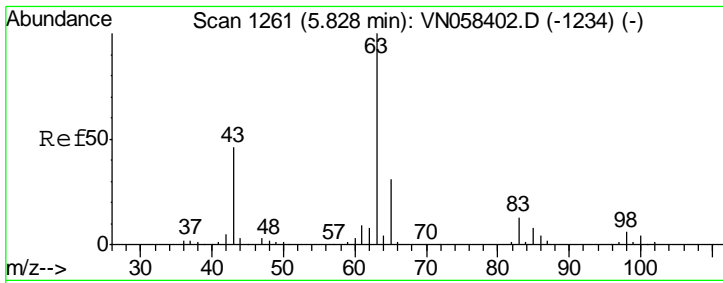


#20
 Methylene Chloride
 Concen: 0.555 ug/l m
 RT: 4.54 min Scan# 859
 Delta R.T. 0.01 min
 Lab File: VN058507.D
 Acq: 3 Oct 2019 14:15



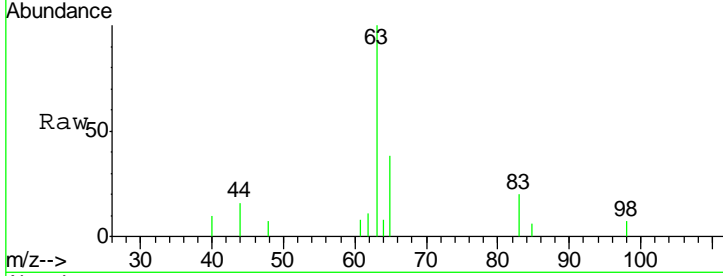
Tgt Ion	Resp	Lower	Upper
84	2196		
84	100		
49	139.6	107.9	161.9
51	32.3	32.8	49.2#
86	68.3	51.5	77.3





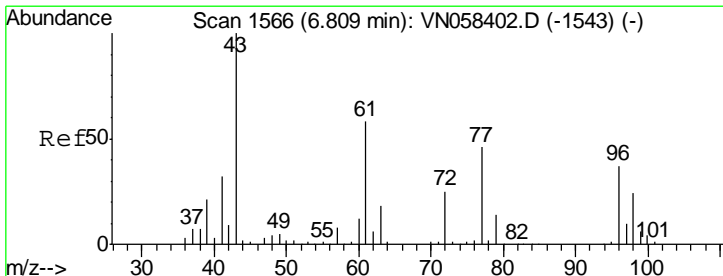
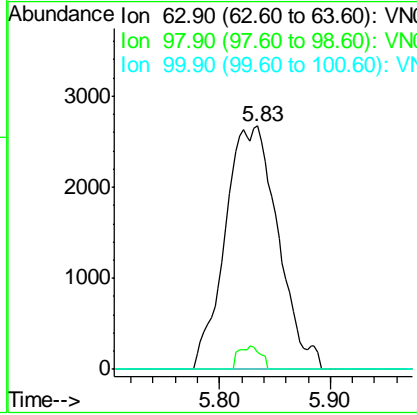
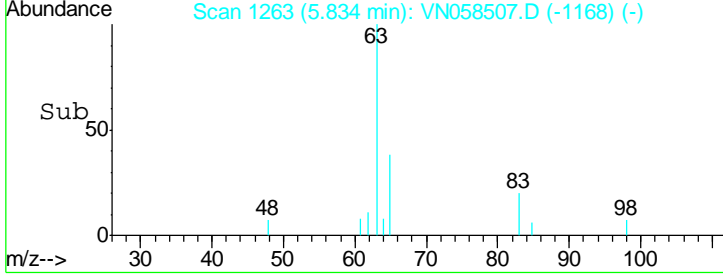
#24
 1,1-Dichloroethane
 Concen: 1.233 ug/l m
 RT: 5.83 min Scan# 1263
 Delta R.T. 0.01 min
 Lab File: VN058507.D
 Acq: 3 Oct 2019 14:15

Instrument : MSVOA_N
 ClientSampled : COMPOSITE-4DL

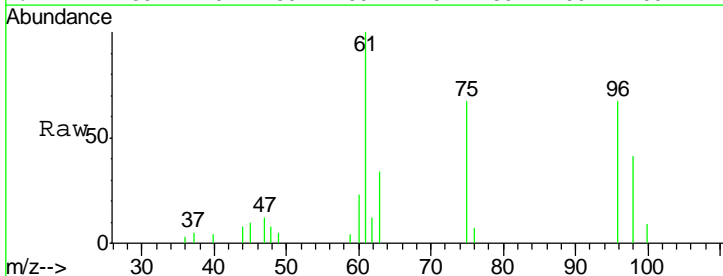


Tgt Ion	Ratio	Lower	Upper
63	100		
98	7.0	3.0	9.0
100	0.0	2.0	5.8#

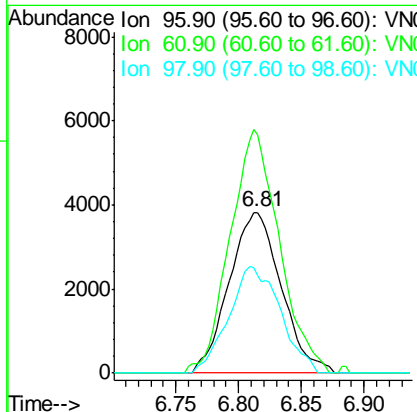
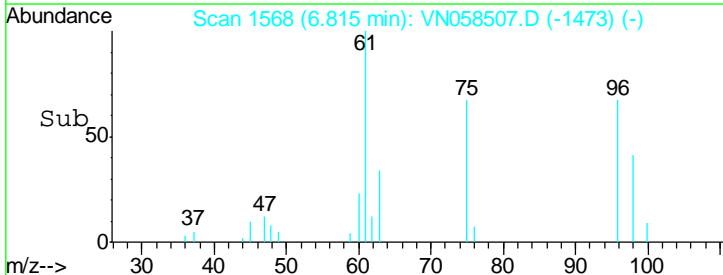
Manual Integrations
APPROVED
 MMDadoda
 10/4/2019 9:30:14 AM

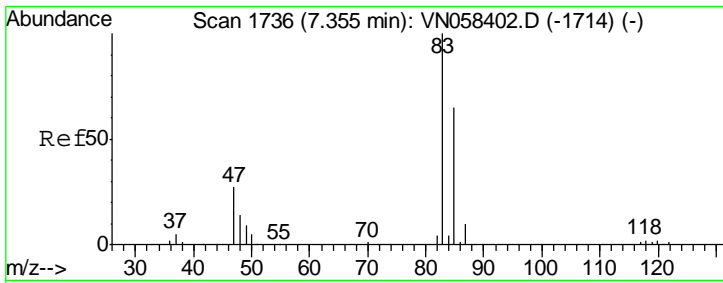


#27
 cis-1,2-Dichloroethene
 Concen: 2.612 ug/l
 RT: 6.81 min Scan# 1568
 Delta R.T. 0.01 min
 Lab File: VN058507.D
 Acq: 3 Oct 2019 14:15



Tgt Ion	Ratio	Lower	Upper
96	100		
61	142.9	0.0	318.8
98	65.5	0.0	129.8





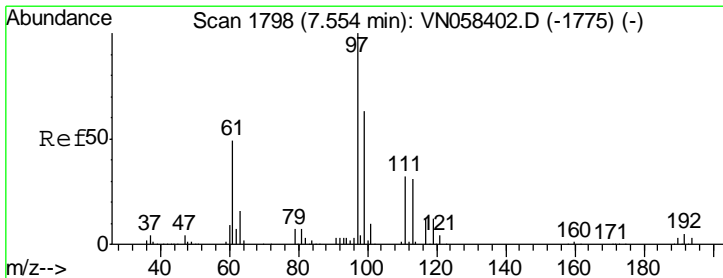
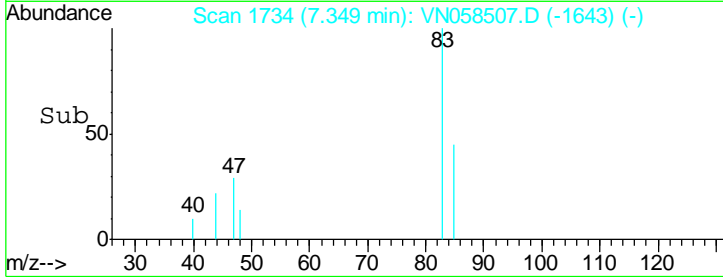
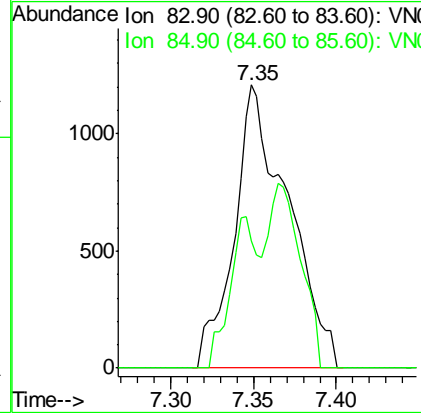
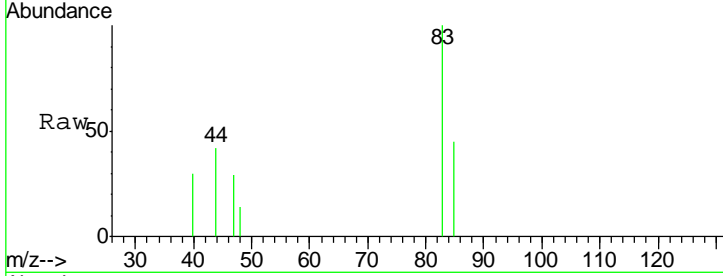
#30
 Chloroform
 Concen: 0.378 ug/l
 RT: 7.35 min Scan# 1734
 Delta R.T. -0.01 min
 Lab File: VN058507.D
 Acq: 3 Oct 2019 14:15

Instrument :
 MSVOA_N
ClientSampled :
 COMPOSITE-4DL

Tgt Ion	Resp	Lower	Upper
83	100		
85	45.1	52.0	78.0#

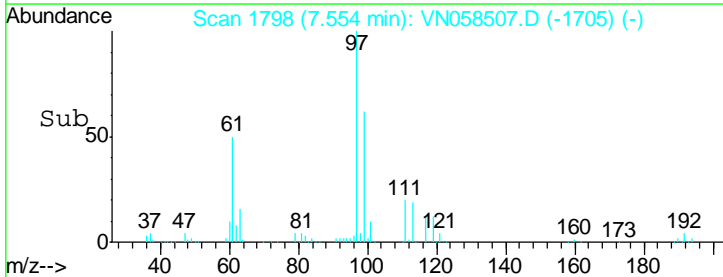
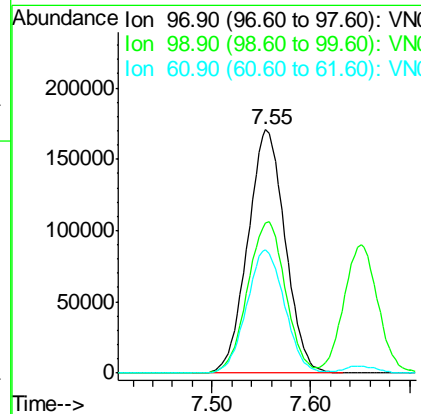
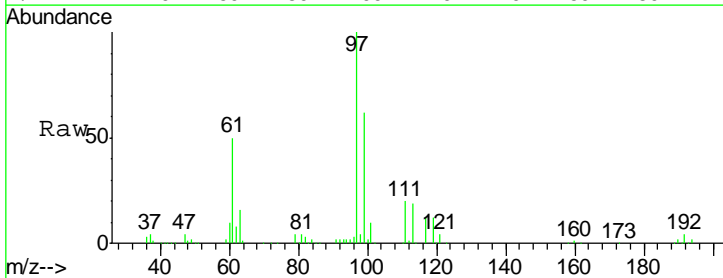
Manual Integrations
APPROVED

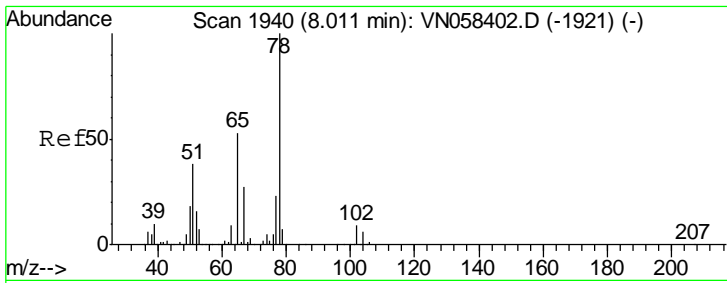
MMDadoda
 10/4/2019 9:30:14 AM



#32
 1,1,1-Trichloroethane
 Concen: 74.932 ug/l
 RT: 7.55 min Scan# 1798
 Delta R.T. -0.00 min
 Lab File: VN058507.D
 Acq: 3 Oct 2019 14:15

Tgt Ion	Resp	Lower	Upper
97	100		
99	62.9	51.1	76.7
61	51.3	39.2	58.8



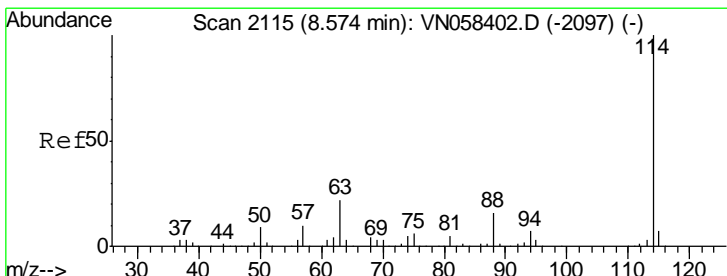
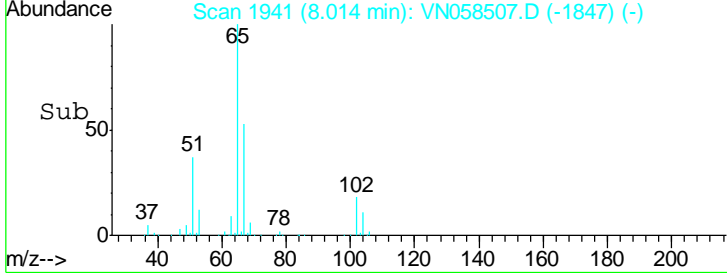
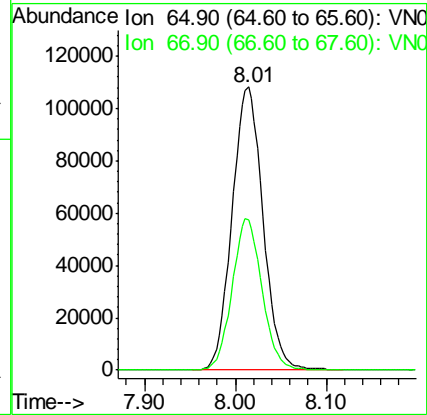
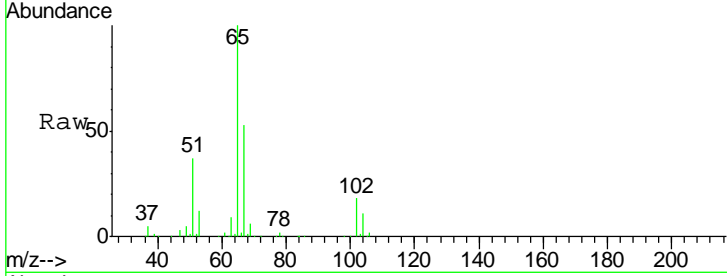


#33
 1,2-Dichloroethane-d4
 Concen: 50.797 ug/l
 RT: 8.01 min Scan# 1941
 Delta R.T. 0.00 min
 Lab File: VN058507.D
 Acq: 3 Oct 2019 14:15

Instrument :
 MSVOA_N
ClientSampled :
 COMPOSITE-4DL

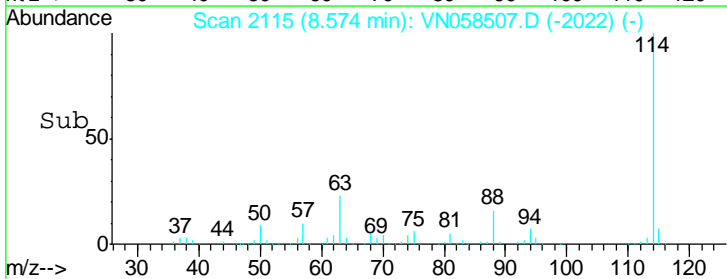
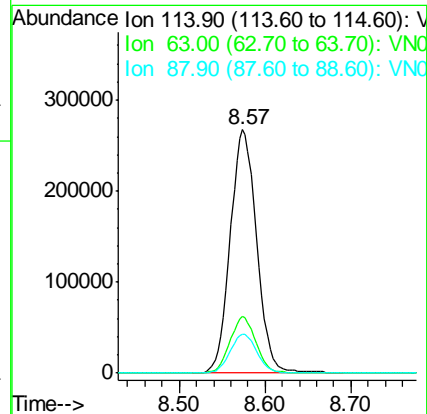
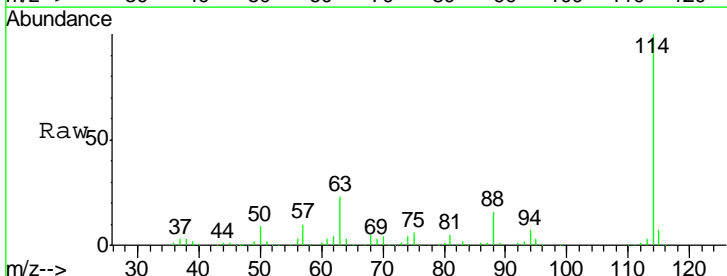
Tgt Ion	Resp	Lower	Upper
65	100		
67	51.5	0.0	102.4

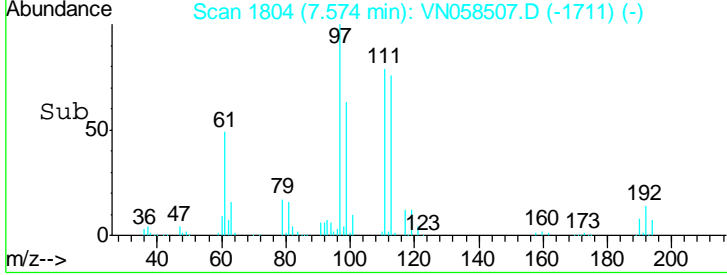
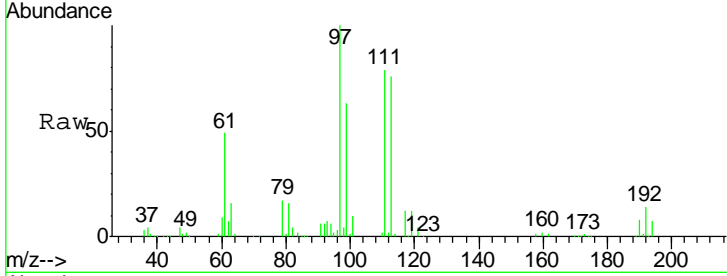
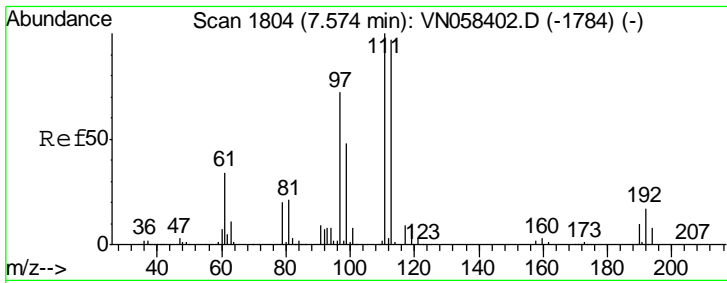
Manual Integrations
APPROVED
 MMDadoda
 10/4/2019 9:30:14 AM



#34
 1,4-Difluorobenzene
 Concen: 50.000 ug/l
 RT: 8.57 min Scan# 2115
 Delta R.T. -0.00 min
 Lab File: VN058507.D
 Acq: 3 Oct 2019 14:15

Tgt Ion	Resp	Lower	Upper
114	100		
63	23.3	0.0	45.0
88	16.0	0.0	32.2



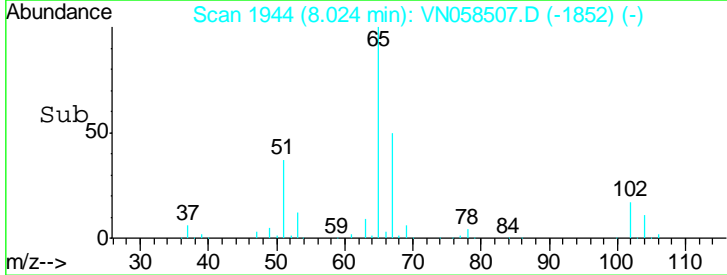
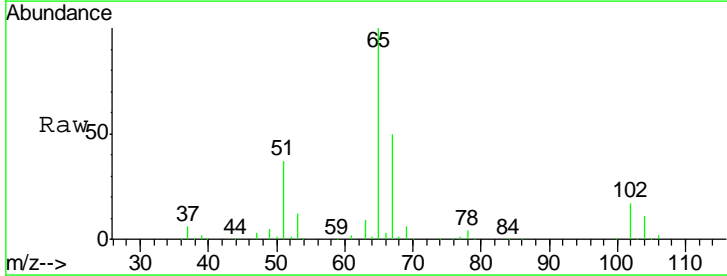
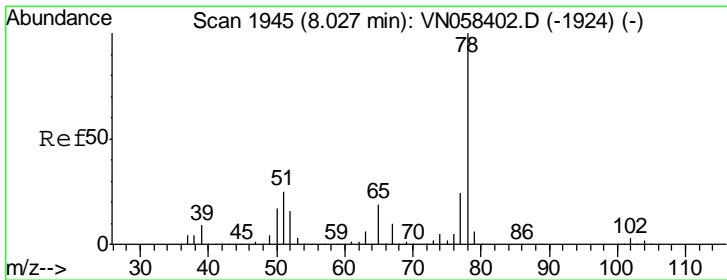
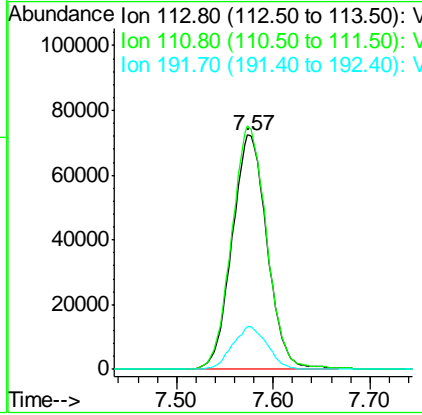


#35
 Dibromofluoromethane
 Concen: 52.002 ug/l
 RT: 7.57 min Scan# 1804
 Delta R.T. -0.00 min
 Lab File: VN058507.D
 Acq: 3 Oct 2019 14:15

Tgt Ion	Resp	Lower	Upper
113	182266		
113	100		
111	104.1	83.4	125.2
192	18.1	14.9	22.3

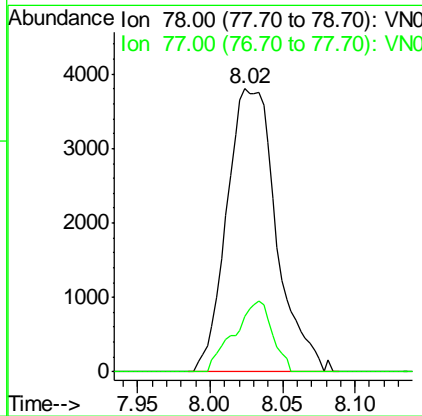
Instrument :
 MSVOA_N
ClientSampled :
 COMPOSITE-4DL

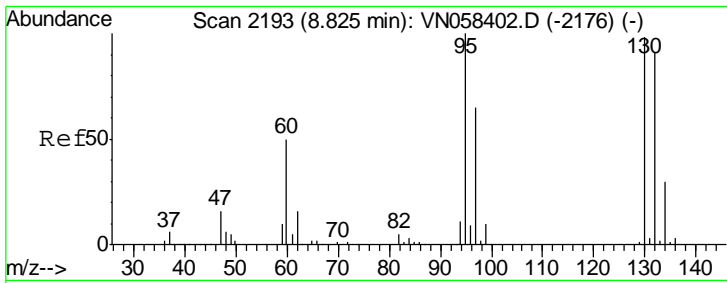
Manual Integrations
APPROVED
 MMDadoda
 10/4/2019 9:30:14 AM



#40
 Benzene
 Concen: 0.575 ug/l
 RT: 8.02 min Scan# 1944
 Delta R.T. -0.00 min
 Lab File: VN058507.D
 Acq: 3 Oct 2019 14:15

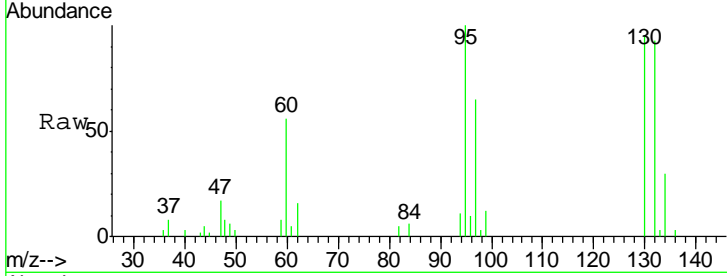
Tgt Ion	Resp	Lower	Upper
78	9039		
78	100		
77	19.6	18.9	28.3





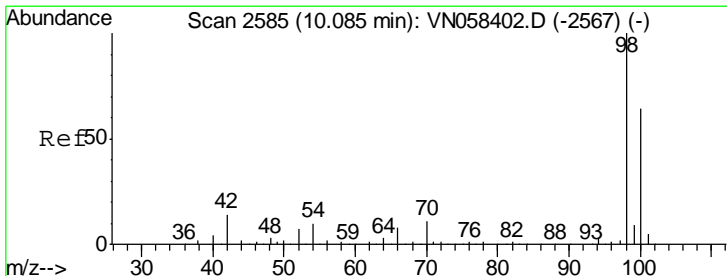
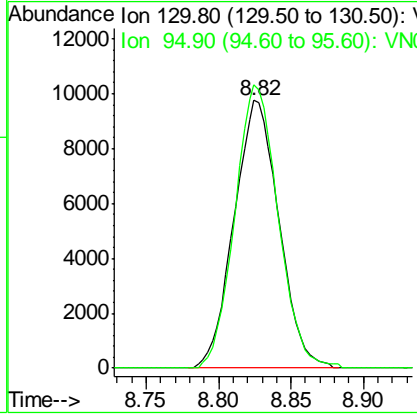
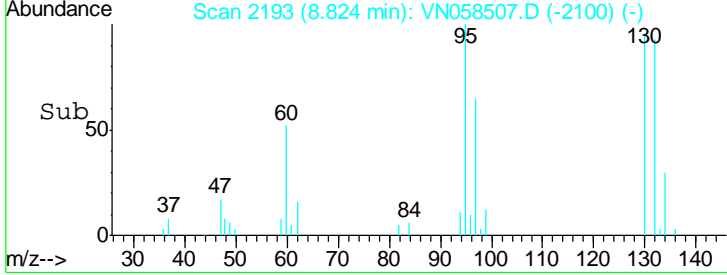
#44
 Trichloroethene
 Concen: 5.415 ug/l
 RT: 8.82 min Scan# 2193
 Delta R.T. -0.00 min
 Lab File: VN058507.D
 Acq: 3 Oct 2019 14:15

Instrument :
 MSVOA_N
ClientSampled :
 COMPOSITE-4DL

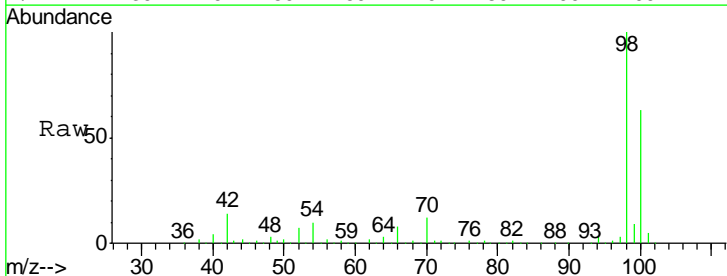


Tgt Ion: 130 Resp: 21018
 Ion Ratio Lower Upper
 130 100
 95 105.7 0.0 204.2

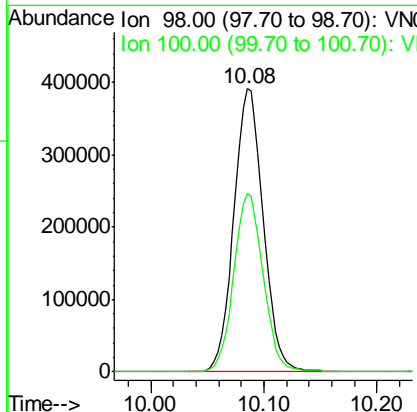
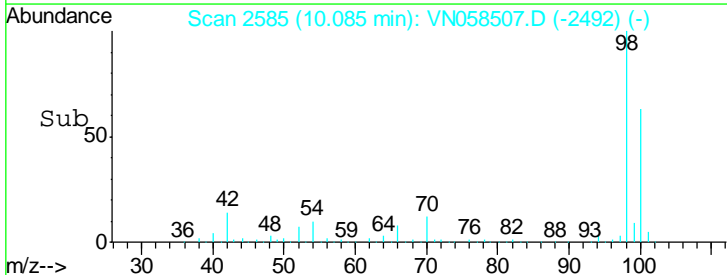
Manual Integrations
APPROVED
 MMDadoda
 10/4/2019 9:30:14 AM

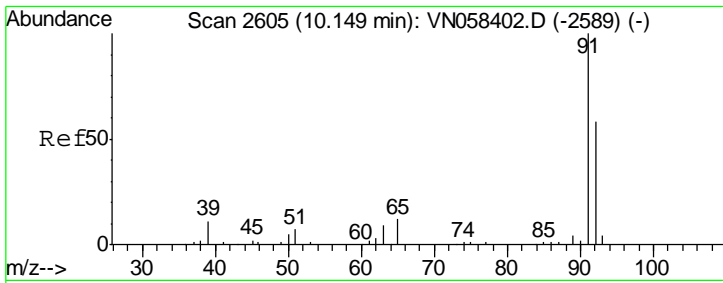


#50
 Toluene-d8
 Concen: 51.670 ug/l
 RT: 10.08 min Scan# 2585
 Delta R.T. -0.00 min
 Lab File: VN058507.D
 Acq: 3 Oct 2019 14:15



Tgt Ion: 98 Resp: 709464
 Ion Ratio Lower Upper
 98 100
 100 63.1 51.0 76.6



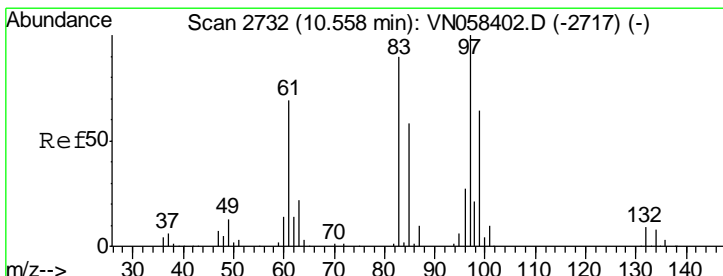
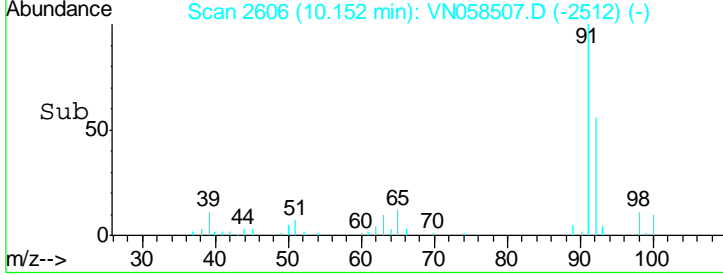
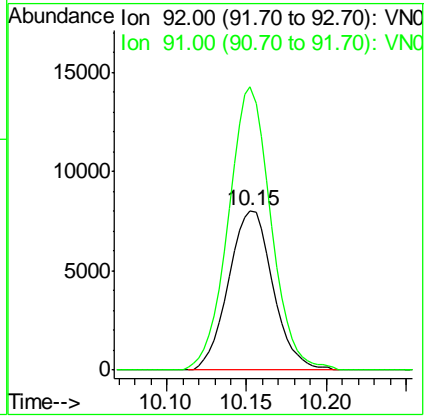
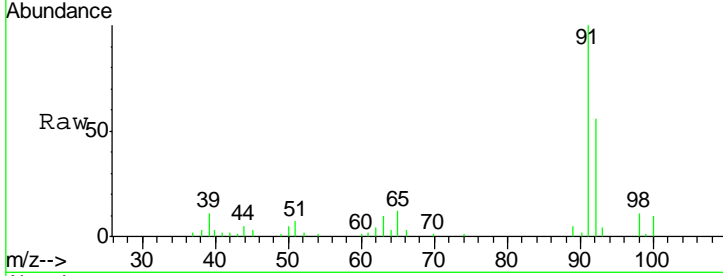


#52
 Toluene
 Concen: 1.538 ug/l
 RT: 10.15 min Scan# 2606
 Delta R.T. 0.00 min
 Lab File: VN058507.D
 Acq: 3 Oct 2019 14:15

Instrument : MSVOA_N
 ClientSampled : COMPOSITE-4DL

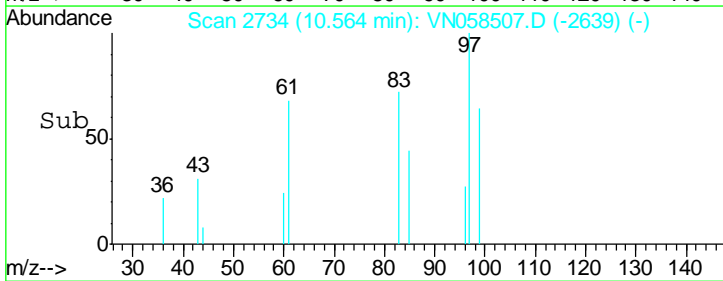
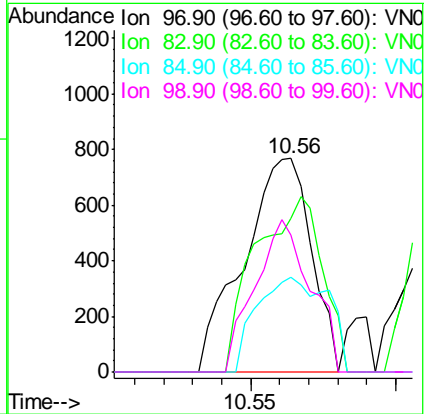
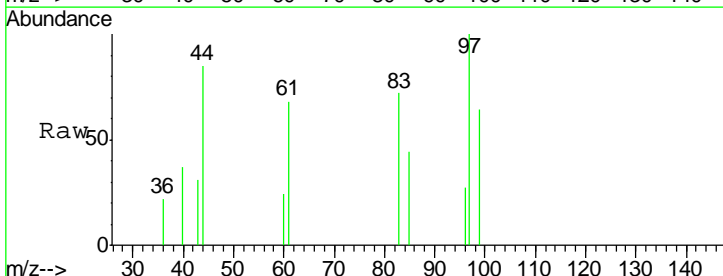
Tgt Ion	Resp	Lower	Upper
92	15220		
92	100		
91	170.3	140.2	210.4

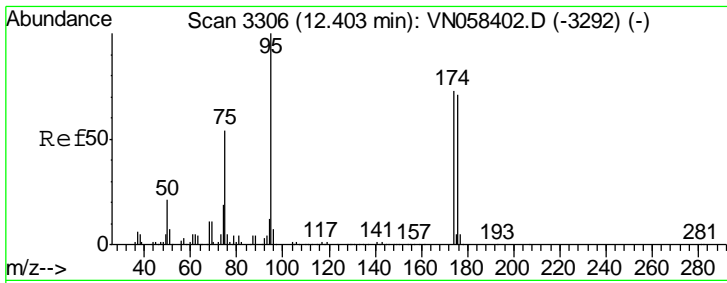
Manual Integrations
APPROVED
 MMDadoda
 10/4/2019 9:30:14 AM



#55
 1,1,2-Trichloroethane
 Concen: 0.346 ug/l
 RT: 10.56 min Scan# 2734
 Delta R.T. 0.01 min
 Lab File: VN058507.D
 Acq: 3 Oct 2019 14:15

Tgt Ion	Resp	Lower	Upper
97	1247		
97	100		
83	72.0	71.8	107.6
85	44.3	46.6	69.8#
99	63.9	51.5	77.3





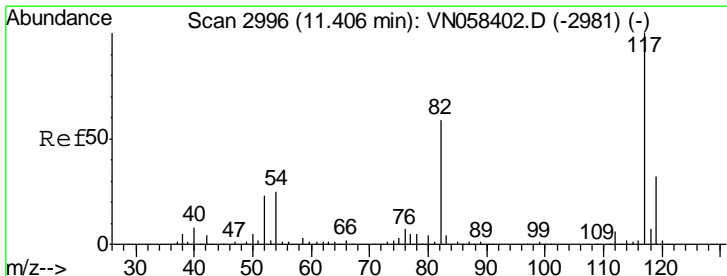
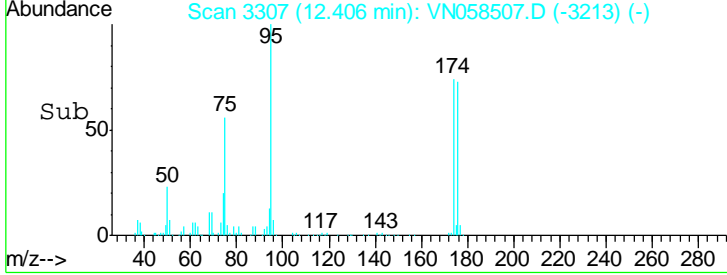
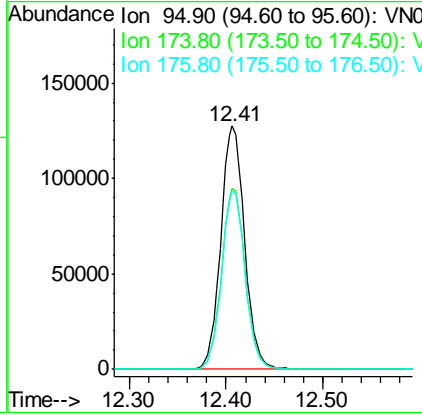
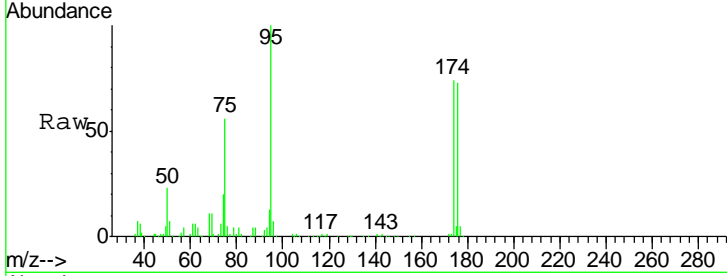
#62
 4-Bromofluorobenzene
 Concen: 43.785 ug/l
 RT: 12.41 min Scan# 3307
 Delta R.T. 0.00 min
 Lab File: VN058507.D
 Acq: 3 Oct 2019 14:15

Instrument : MSVOA_N
 ClientSampled : COMPOSITE-4DL

Tgt Ion	Resp	Lower	Upper
95	217379		
95	100		
174	74.2	0.0	150.6
176	72.5	0.0	146.2

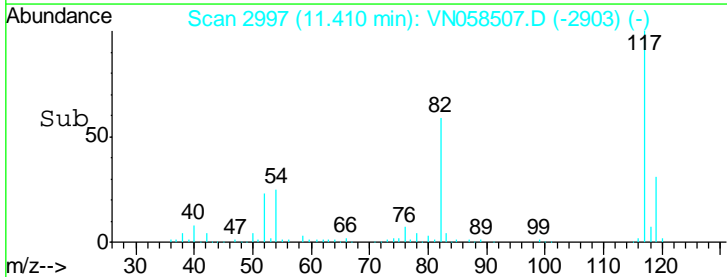
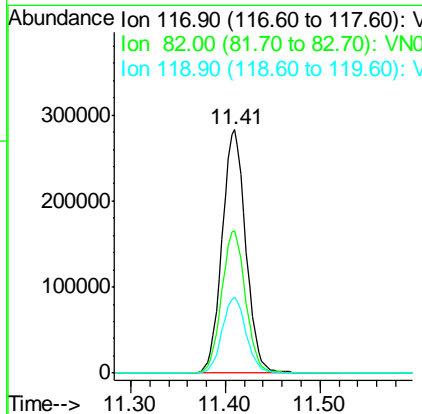
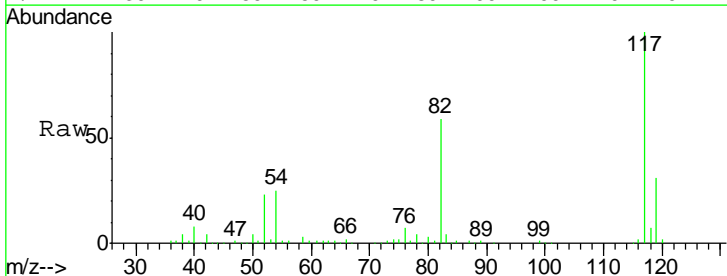
Manual Integrations
 APPROVED

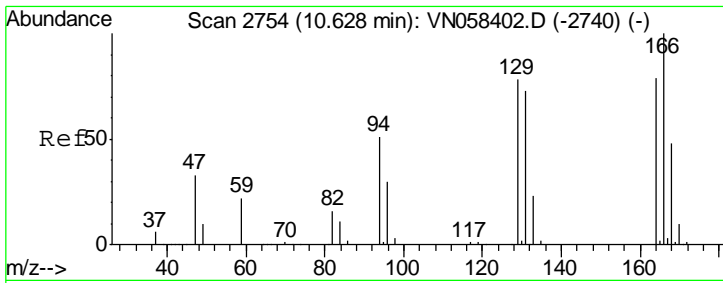
MMDadoda
 10/4/2019 9:30:14 AM



#63
 Chlorobenzene-d5
 Concen: 50.000 ug/l
 RT: 11.41 min Scan# 2997
 Delta R.T. 0.00 min
 Lab File: VN058507.D
 Acq: 3 Oct 2019 14:15

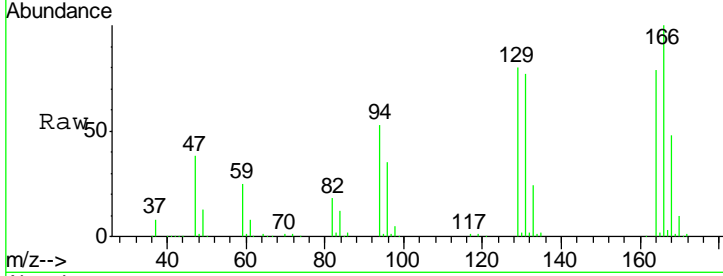
Tgt Ion	Resp	Lower	Upper
117	491611		
117	100		
82	58.5	47.4	71.0
119	31.0	25.5	38.3





#64
 Tetrachloroethene
 Concen: 83.037 ug/l
 RT: 10.63 min Scan# 2754
 Delta R.T. -0.00 min
 Lab File: VN058507.D
 Acq: 3 Oct 2019 14:15

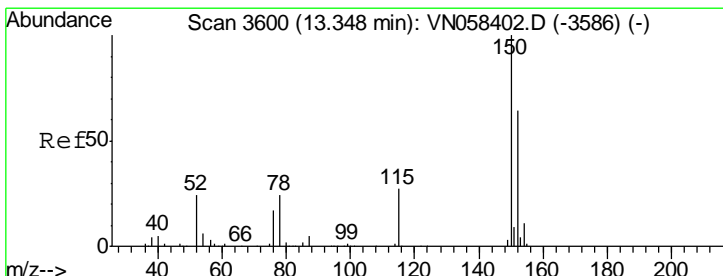
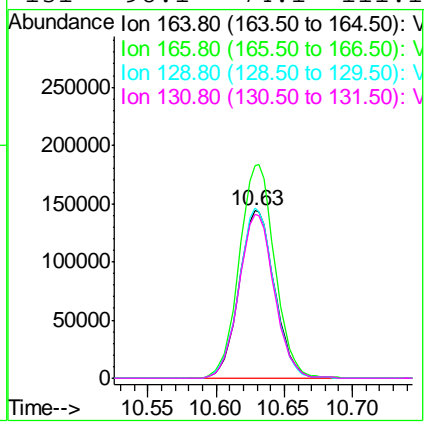
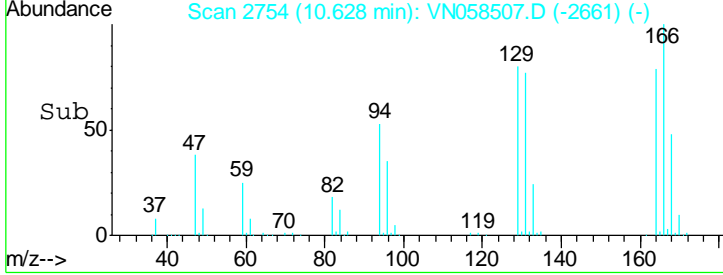
Instrument :
 MSVOA_N
ClientSampled :
 COMPOSITE-4DL



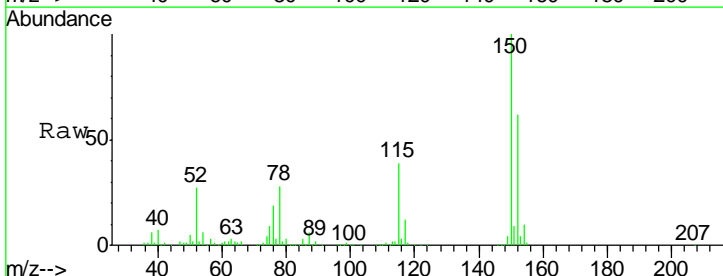
Tgt Ion:164 Resp: 259355

Ion	Ratio	Lower	Upper
164	100		
166	126.9	101.1	151.7
129	101.6	79.2	118.8
131	98.1	74.1	111.1

Manual Integrations
APPROVED
 MMDadoda
 10/4/2019 9:30:14 AM



#72
 1,4-Dichlorobenzene-d4
 Concen: 50.000 ug/l
 RT: 13.35 min Scan# 3601
 Delta R.T. 0.00 min
 Lab File: VN058507.D
 Acq: 3 Oct 2019 14:15



Tgt Ion:152 Resp: 179526

Ion	Ratio	Lower	Upper
152	100		
115	63.0	30.0	90.0
150	161.1	0.0	348.2

