

Data Path : Z:\voasrv\HPCHEM1\MSVOA_N\Data\VN100324\
 Data File : VN084297.D
 Acq On : 03 Oct 2024 14:39
 Operator : JC\MD
 Sample : P4226-23
 Misc : 5.0mL/MSVOA_N/WATER
 ALS Vial : 17 Sample Multiplier: 1

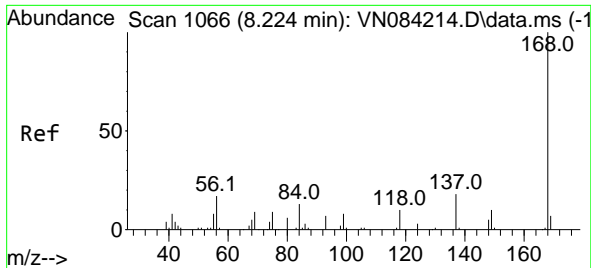
Instrument :
 MSVOA_N
 ClientSampleId :
 RW4-20240927

Quant Time: Oct 04 01:35:00 2024
 Quant Method : Z:\voasrv\HPCHEM1\MSVOA_N\methods\82N093024W.M
 Quant Title : SW846 8260
 QLast Update : Tue Oct 01 07:11:01 2024
 Response via : Initial Calibration

Compound	R.T.	QIon	Response	Conc	Units	Dev(Min)

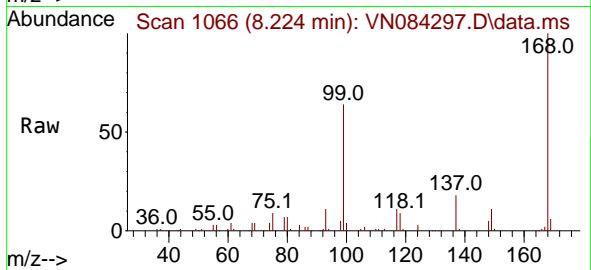
Internal Standards						
1) Pentafluorobenzene	8.224	168	156008	50.000	ug/l	0.00
34) 1,4-Difluorobenzene	9.100	114	270884	50.000	ug/l	0.00
63) Chlorobenzene-d5	11.865	117	234558	50.000	ug/l	0.00
72) 1,4-Dichlorobenzene-d4	13.788	152	92894	50.000	ug/l	0.00
System Monitoring Compounds						
33) 1,2-Dichloroethane-d4	8.582	65	117432	50.768	ug/l	0.00
Spiked Amount	50.000	Range 74 - 125	Recovery	=	101.540%	
35) Dibromofluoromethane	8.165	113	90548	50.703	ug/l	0.00
Spiked Amount	50.000	Range 75 - 124	Recovery	=	101.400%	
50) Toluene-d8	10.565	98	336435	51.206	ug/l	0.00
Spiked Amount	50.000	Range 86 - 113	Recovery	=	102.420%	
62) 4-Bromofluorobenzene	12.847	95	111110	46.419	ug/l	0.00
Spiked Amount	50.000	Range 77 - 121	Recovery	=	92.840%	
Target Compounds						
						Qvalue
3) Chloromethane	2.359	50	449	0.213	ug/l	95
6) Chloroethane	3.112	64	899	0.615	ug/l #	45
9) 1,1,2-Trichlorotrifluo...	4.377	101	13850	7.605	ug/l	100
12) 1,1-Dichloroethene	4.347	96	1043	0.594	ug/l #	56
16) Acetone	4.447	43	561	0.565	ug/l #	44
27) cis-1,2-Dichloroethene	7.482	96	2275	1.023	ug/l	68
30) Chloroform	7.965	83	763	0.208	ug/l #	75
31) Cyclohexane	8.224	56	3615	1.055	ug/l #	6
36) 1,1-Dichloropropene	8.224	75	14187	5.469	ug/l #	50
39) Methylcyclohexane	9.353	83	10391	3.599	ug/l #	1
44) Trichloroethene	9.353	130	774899	410.515	ug/l	97
45) 1,2-Dichloropropane	9.347	63	2197	1.149	ug/l #	1
49) 1,4-Dioxane	9.700	88	359	9.398	ug/l #	81
51) 4-Methyl-2-Pentanone	10.565	43	1376	0.543	ug/l #	1
60) Dibromochloromethane	11.106	129	8469	4.057	ug/l #	11
64) Tetrachloroethene	11.106	164	8835	5.408	ug/l	94
71) Bromoform	12.841	173	621	0.471	ug/l #	1
76) 1,2,3-Trichloropropane	12.847	75	60574	31.941	ug/l #	1
81) trans-1,4-Dichloro-2-b...	12.847	75	60574	76.576	ug/l #	11

(#) = qualifier out of range (m) = manual integration (+) = signals summed

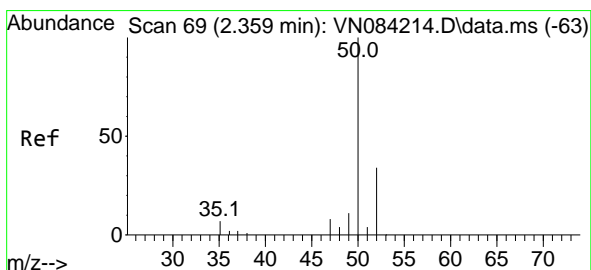
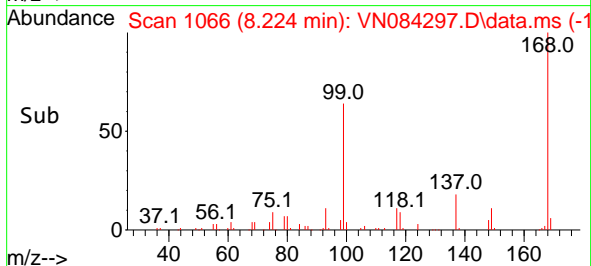
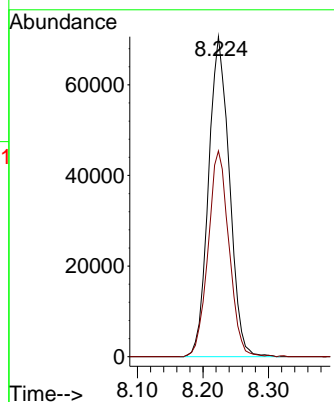


#1
 Pentafluorobenzene
 Concen: 50.000 ug/l
 RT: 8.224 min Scan# 1066
 Delta R.T. -0.000 min
 Lab File: VN084297.D
 Acq: 03 Oct 2024 14:39

Instrument : MSVOA_N
 ClientSampleId : RW4-20240927

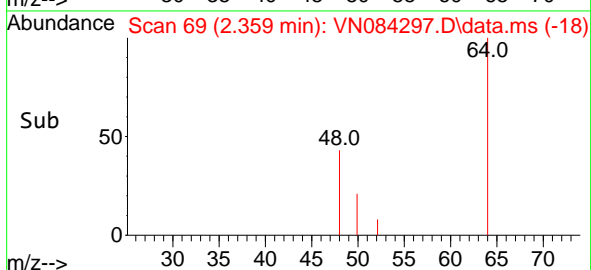
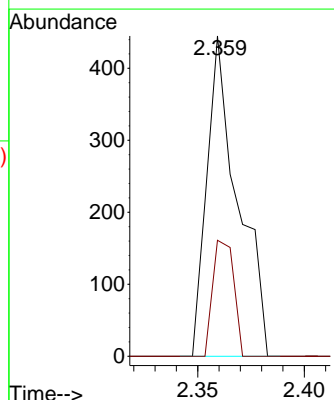
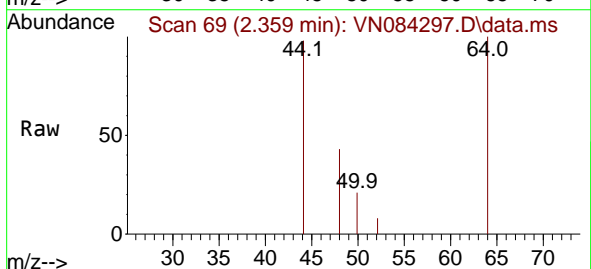


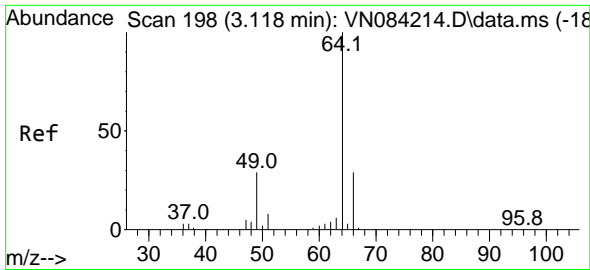
Tgt Ion:168 Resp: 156008
 Ion Ratio Lower Upper
 168 100
 99 64.3 54.2 81.2



#3
 Chloromethane
 Concen: 0.213 ug/l
 RT: 2.359 min Scan# 69
 Delta R.T. -0.000 min
 Lab File: VN084297.D
 Acq: 03 Oct 2024 14:39

Tgt Ion: 50 Resp: 449
 Ion Ratio Lower Upper
 50 100
 52 36.2 26.8 40.2

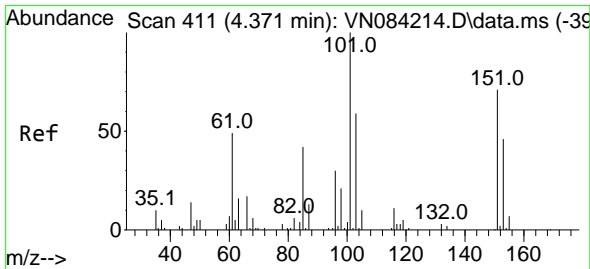
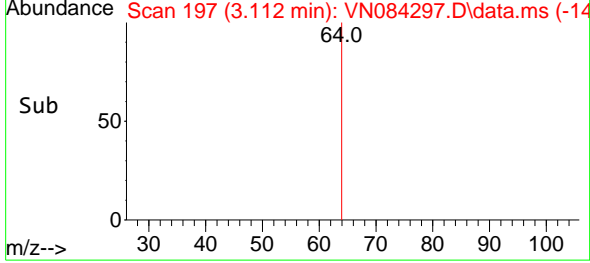
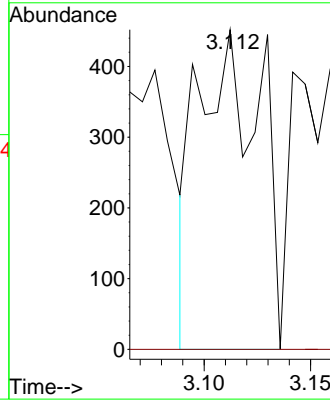
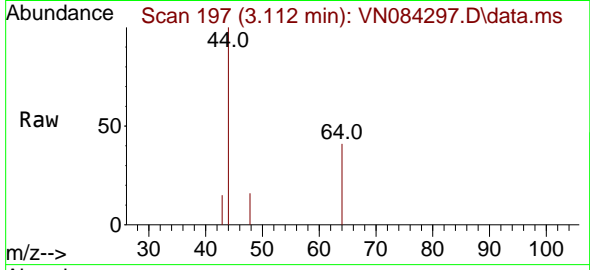




#6
 Chloroethane
 Concen: 0.615 ug/l
 RT: 3.112 min Scan# 197
 Delta R.T. -0.006 min
 Lab File: VN084297.D
 Acq: 03 Oct 2024 14:39

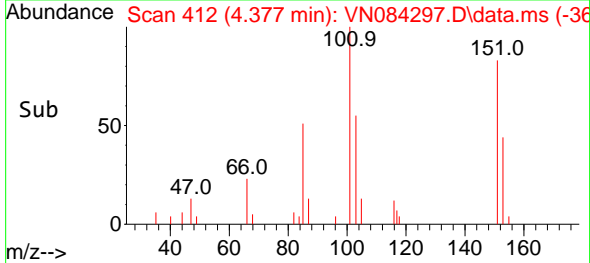
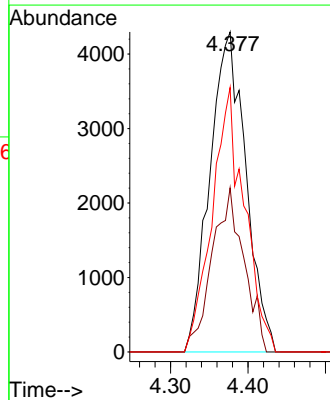
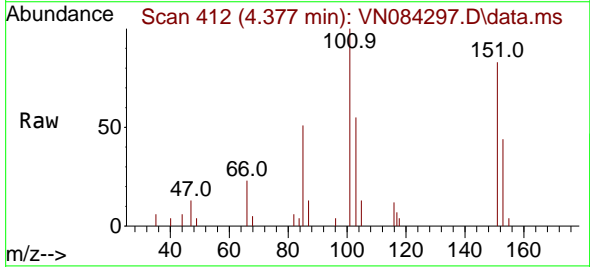
Instrument : MSVOA_N
 ClientSampleId : RW4-20240927

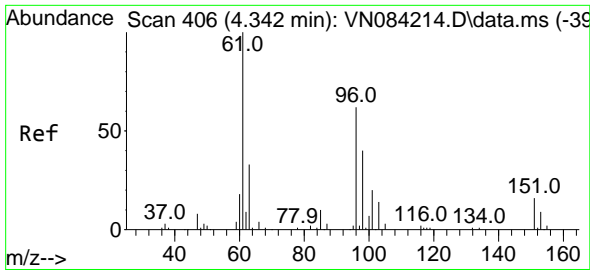
Tgt Ion: 64 Resp: 899
 Ion Ratio Lower Upper
 64 100
 66 0.0 23.5 35.3#



#9
 1,1,2-Trichlorotrifluoroethane
 Concen: 7.605 ug/l
 RT: 4.377 min Scan# 412
 Delta R.T. 0.006 min
 Lab File: VN084297.D
 Acq: 03 Oct 2024 14:39

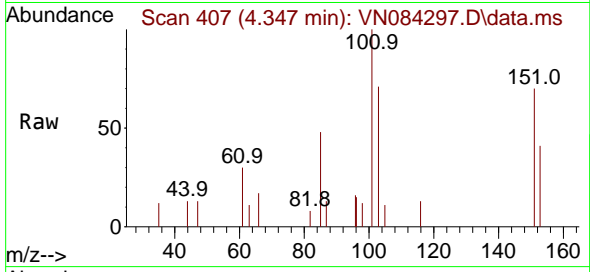
Tgt Ion: 101 Resp: 13850
 Ion Ratio Lower Upper
 101 100
 85 45.5 36.2 54.4
 151 74.3 59.3 88.9



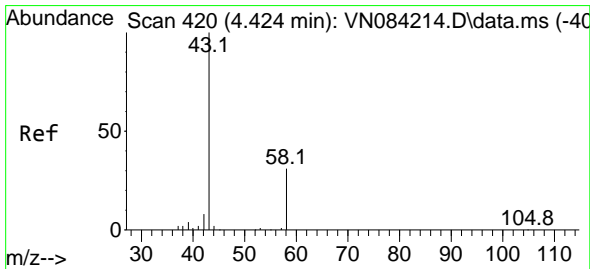
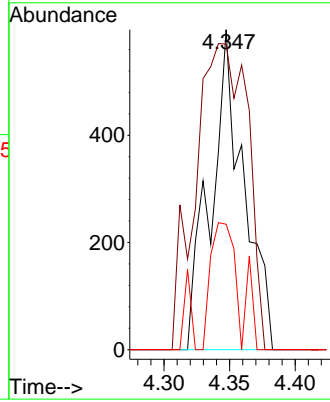
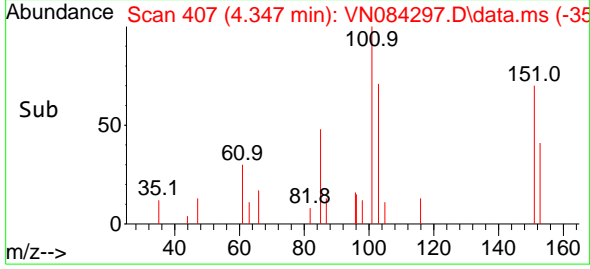


#12
 1,1-Dichloroethene
 Concen: 0.594 ug/l
 RT: 4.347 min Scan# 406
 Delta R.T. 0.006 min
 Lab File: VN084297.D
 Acq: 03 Oct 2024 14:39

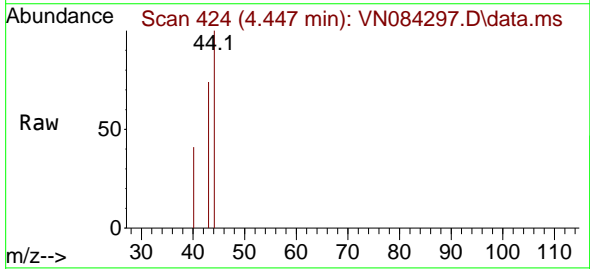
Instrument : MSVOA_N
 ClientSampleId : RW4-20240927



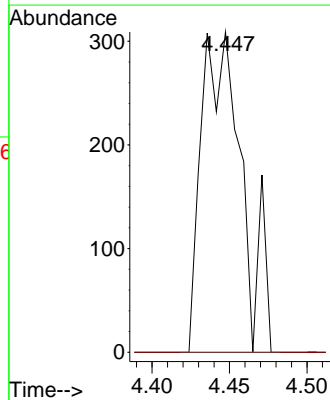
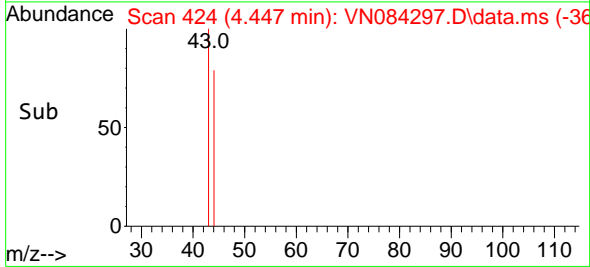
Tgt Ion: 96 Resp: 1043
 Ion Ratio Lower Upper
 96 100
 61 95.5 128.6 192.8#
 98 39.2 51.7 77.5#

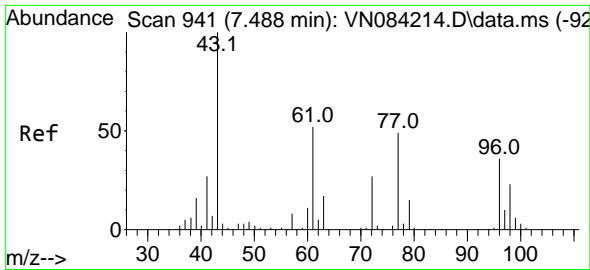


#16
 Acetone
 Concen: 0.565 ug/l
 RT: 4.447 min Scan# 424
 Delta R.T. 0.023 min
 Lab File: VN084297.D
 Acq: 03 Oct 2024 14:39



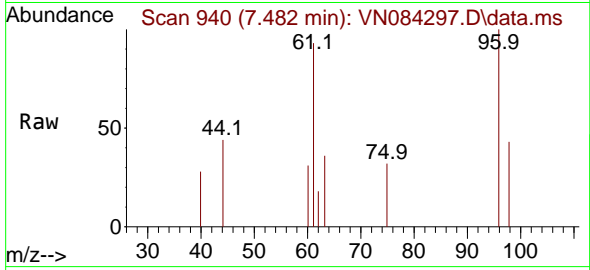
Tgt Ion: 43 Resp: 561
 Ion Ratio Lower Upper
 43 100
 58 0.0 24.4 36.6#





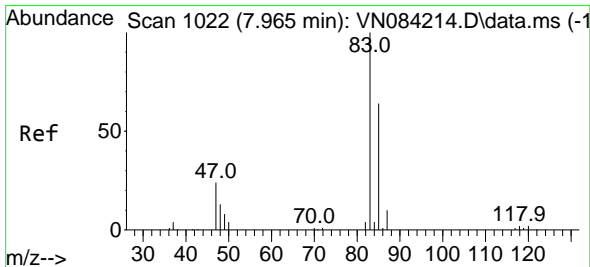
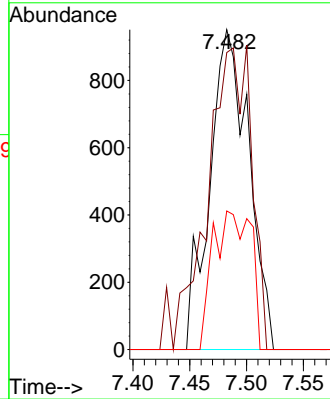
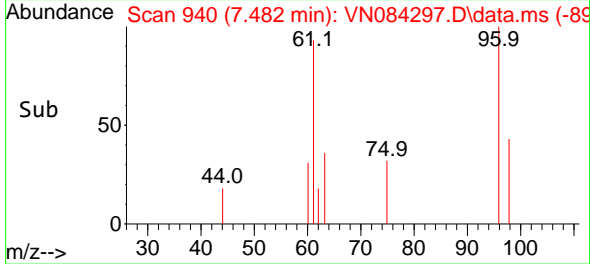
#27
 cis-1,2-Dichloroethene
 Concen: 1.023 ug/l
 RT: 7.482 min Scan# 941
 Delta R.T. -0.006 min
 Lab File: VN084297.D
 Acq: 03 Oct 2024 14:39

Instrument : MSVOA_N
 ClientSampleId : RW4-20240927

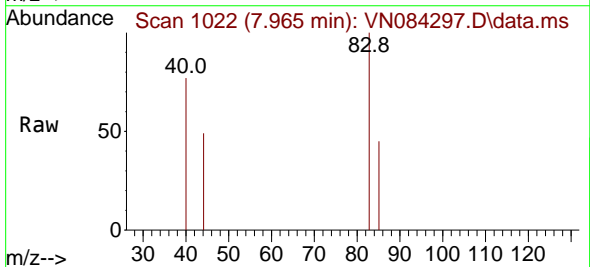


Tgt Ion: 96 Resp: 2275

Ion	Ratio	Lower	Upper
96	100		
61	108.5	0.0	301.8
98	42.1	0.0	128.2

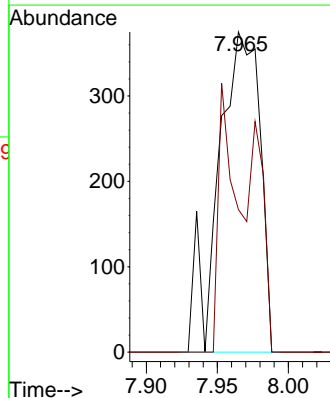
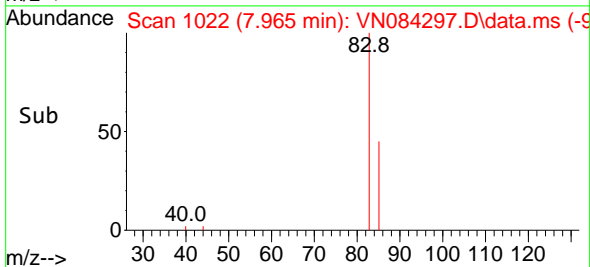


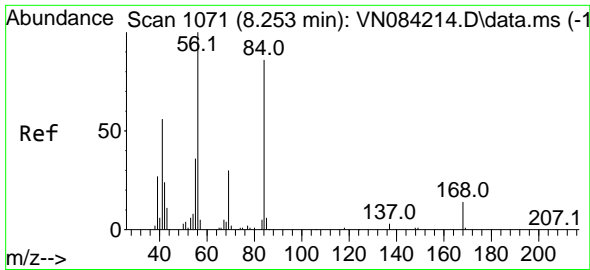
#30
 Chloroform
 Concen: 0.208 ug/l
 RT: 7.965 min Scan# 1022
 Delta R.T. -0.000 min
 Lab File: VN084297.D
 Acq: 03 Oct 2024 14:39



Tgt Ion: 83 Resp: 763

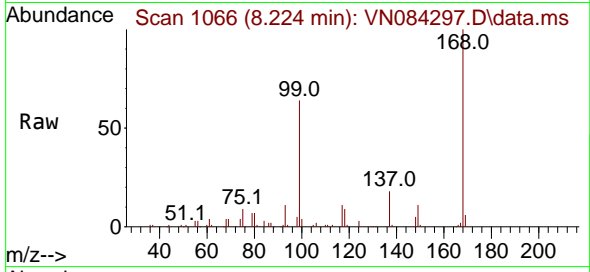
Ion	Ratio	Lower	Upper
83	100		
85	44.5	51.0	76.4#



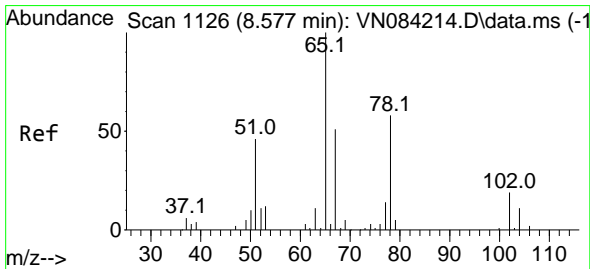
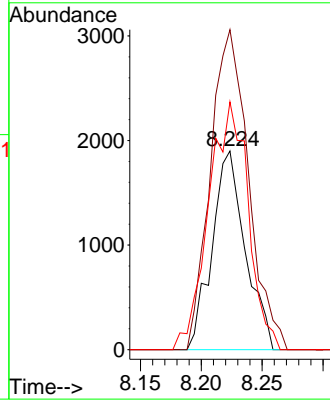
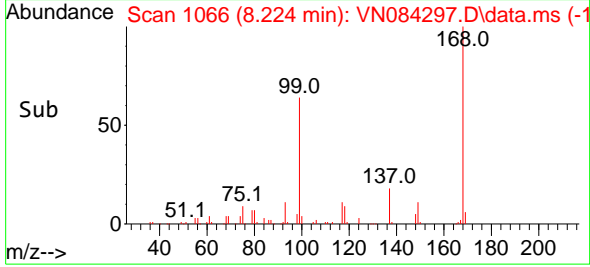


#31
 Cyclohexane
 Concen: 1.055 ug/l
 RT: 8.224 min Scan# 1066
 Delta R.T. -0.030 min
 Lab File: VN084297.D
 Acq: 03 Oct 2024 14:39

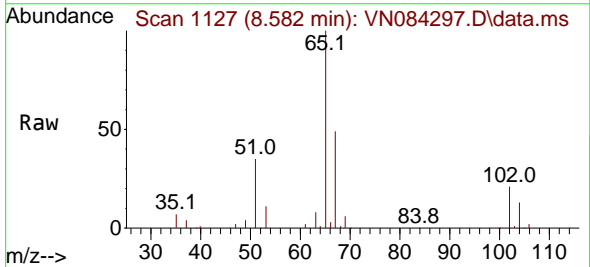
Instrument : MSVOA_N
 ClientSampleId : RW4-20240927



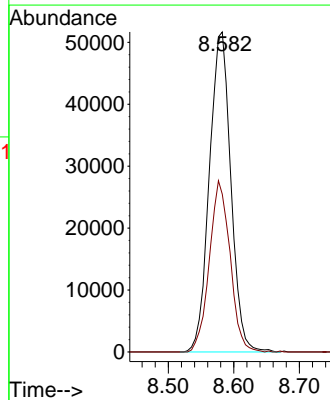
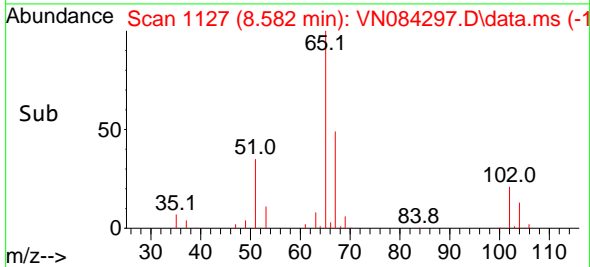
Tgt Ion: 56 Resp: 3615
 Ion Ratio Lower Upper
 56 100
 69 161.1 23.8 35.6#
 84 124.7 68.8 103.2#

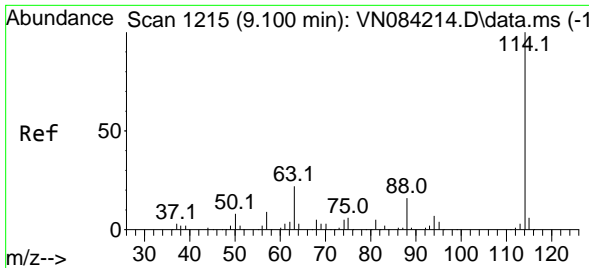


#33
 1,2-Dichloroethane-d4
 Concen: 50.768 ug/l
 RT: 8.582 min Scan# 1127
 Delta R.T. 0.006 min
 Lab File: VN084297.D
 Acq: 03 Oct 2024 14:39



Tgt Ion: 65 Resp: 117432
 Ion Ratio Lower Upper
 65 100
 67 51.7 0.0 102.0

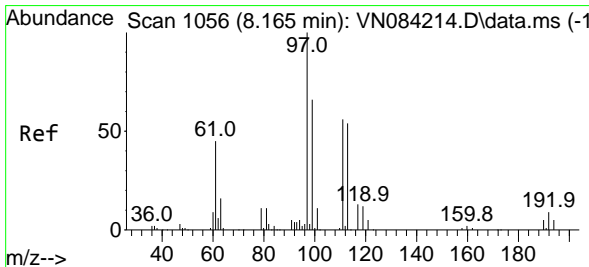
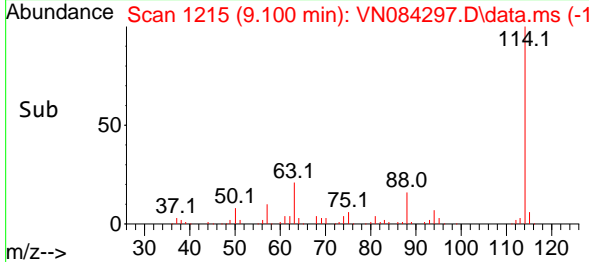
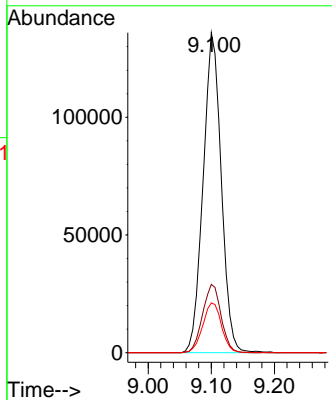
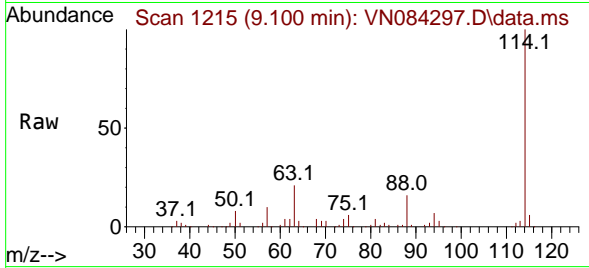




#34
 1,4-Difluorobenzene
 Concen: 50.000 ug/l
 RT: 9.100 min Scan# 11
 Delta R.T. -0.000 min
 Lab File: VN084297.D
 Acq: 03 Oct 2024 14:39

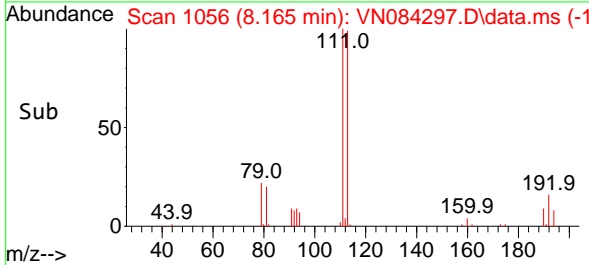
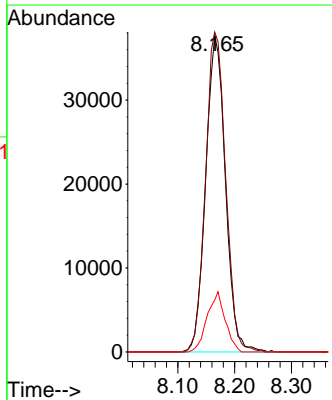
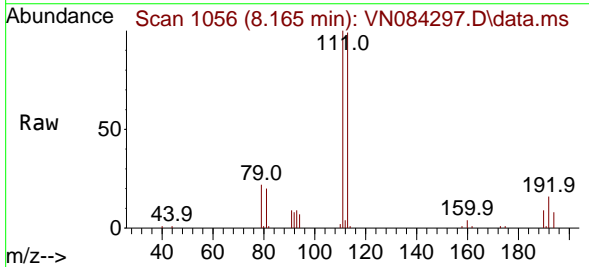
Instrument : MSVOA_N
 ClientSampleId : RW4-20240927

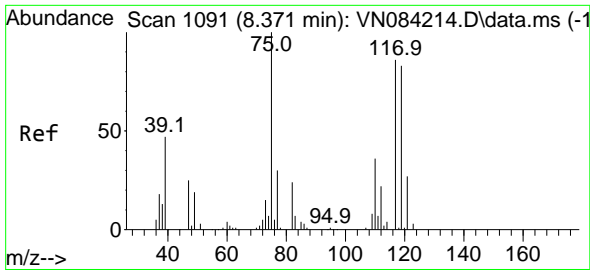
Tgt Ion	Resp	Lower	Upper
114	100		
63	21.4	0.0	43.8
88	15.5	0.0	31.6



#35
 Dibromofluoromethane
 Concen: 50.703 ug/l
 RT: 8.165 min Scan# 1056
 Delta R.T. -0.000 min
 Lab File: VN084297.D
 Acq: 03 Oct 2024 14:39

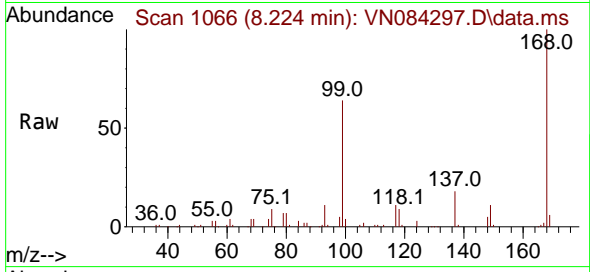
Tgt Ion	Resp	Lower	Upper
113	100		
111	103.2	83.3	124.9
192	17.4	13.5	20.3



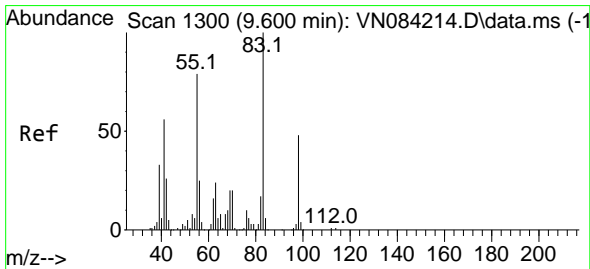
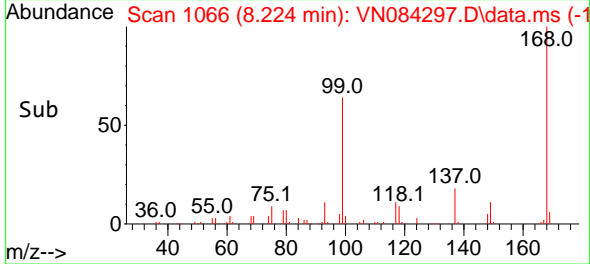
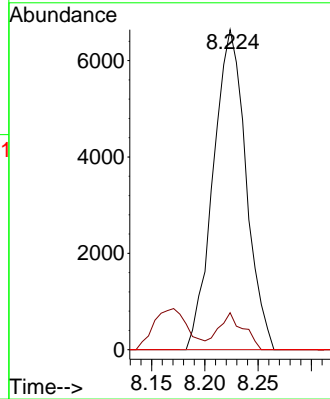


#36
 1,1-Dichloropropene
 Concen: 5.469 ug/l
 RT: 8.224 min Scan# 1066
 Delta R.T. -0.147 min
 Lab File: VN084297.D
 Acq: 03 Oct 2024 14:39

Instrument : MSVOA_N
 ClientSampleId : RW4-20240927

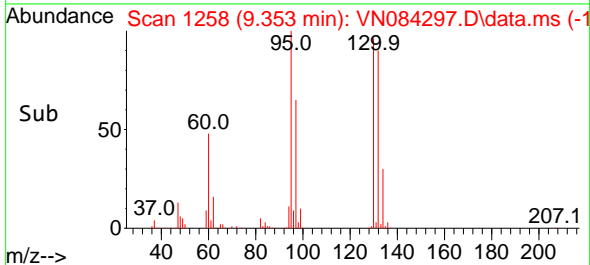
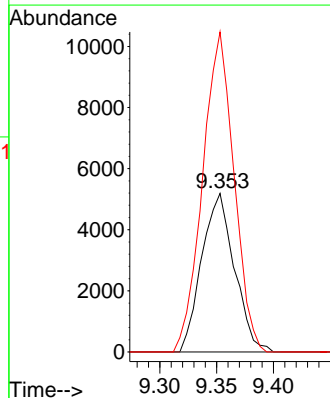
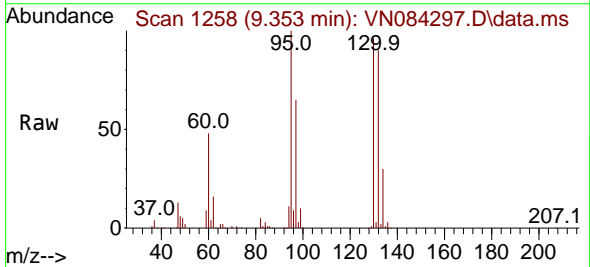


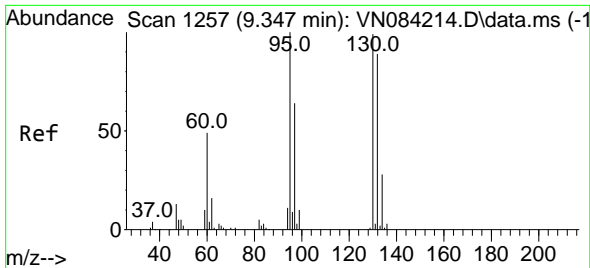
Tgt Ion: 75 Resp: 14187
 Ion Ratio Lower Upper
 75 100
 110 8.8 16.9 50.7#
 77 0.0 24.7 37.1#



#39
 Methylcyclohexane
 Concen: 3.599 ug/l
 RT: 9.353 min Scan# 1258
 Delta R.T. -0.247 min
 Lab File: VN084297.D
 Acq: 03 Oct 2024 14:39

Tgt Ion: 83 Resp: 10391
 Ion Ratio Lower Upper
 83 100
 55 0.0 62.8 94.2#
 98 201.8 38.8 58.2#

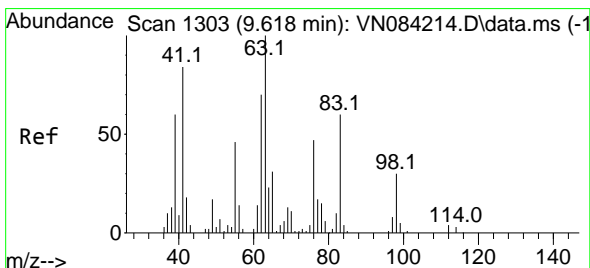
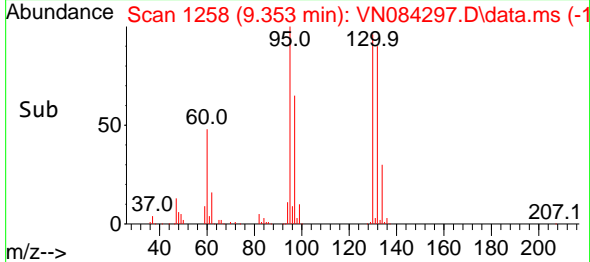
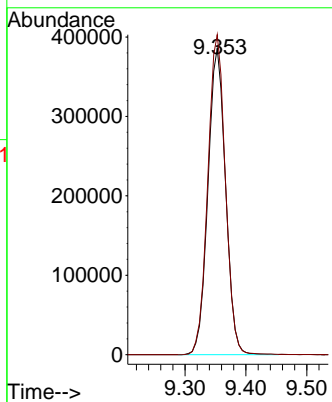
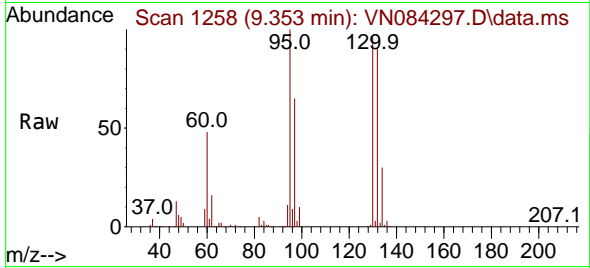




#44
 Trichloroethene
 Concen: 410.515 ug/l
 RT: 9.353 min Scan# 11
 Delta R.T. 0.006 min
 Lab File: VN084297.D
 Acq: 03 Oct 2024 14:39

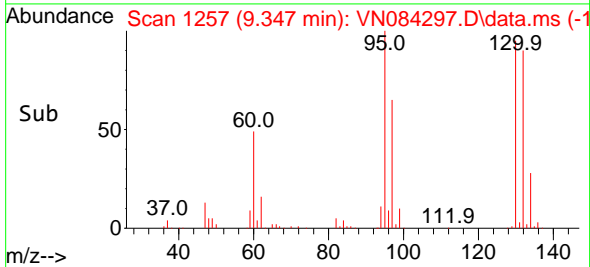
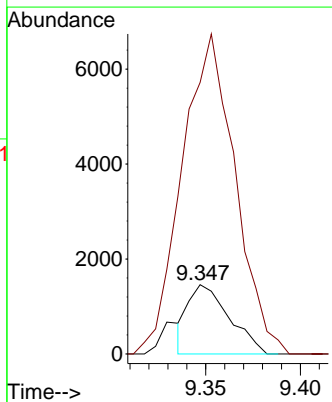
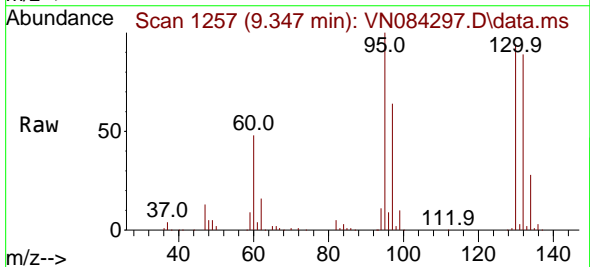
Instrument : MSVOA_N
 ClientSampleId : RW4-20240927

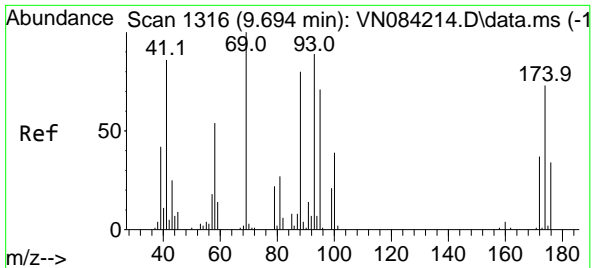
Tgt Ion:130 Resp: 774899
 Ion Ratio Lower Upper
 130 100
 95 104.5 0.0 203.0



#45
 1,2-Dichloropropane
 Concen: 1.149 ug/l
 RT: 9.347 min Scan# 1257
 Delta R.T. -0.271 min
 Lab File: VN084297.D
 Acq: 03 Oct 2024 14:39

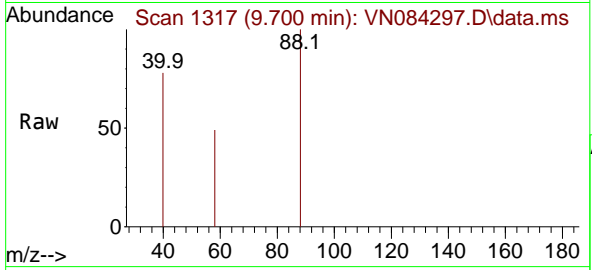
Tgt Ion: 63 Resp: 2197
 Ion Ratio Lower Upper
 63 100
 65 371.7 24.6 37.0#



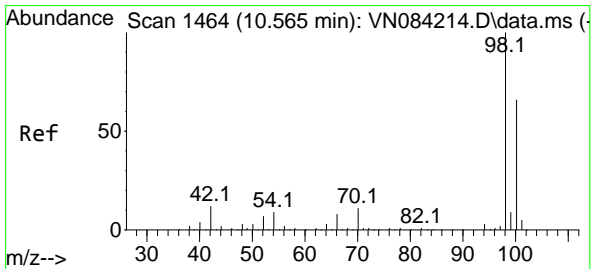
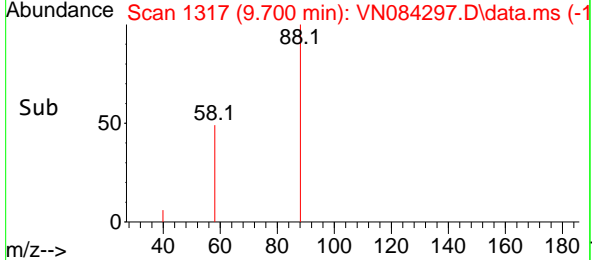
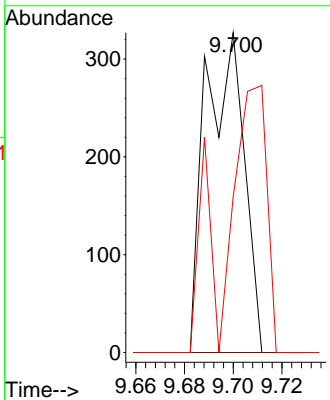


#49
 1,4-Dioxane
 Concen: 9.398 ug/l
 RT: 9.700 min Scan# 11
 Delta R.T. 0.006 min
 Lab File: VN084297.D
 Acq: 03 Oct 2024 14:39

Instrument : MSVOA_N
 ClientSampleId : RW4-20240927

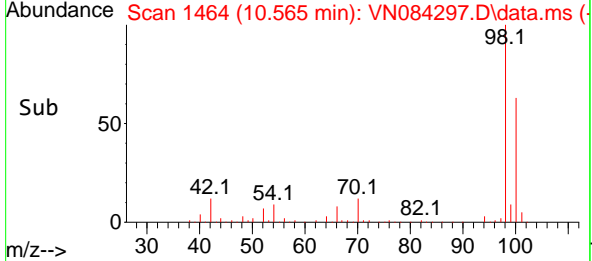
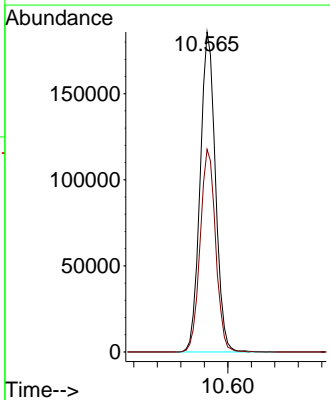
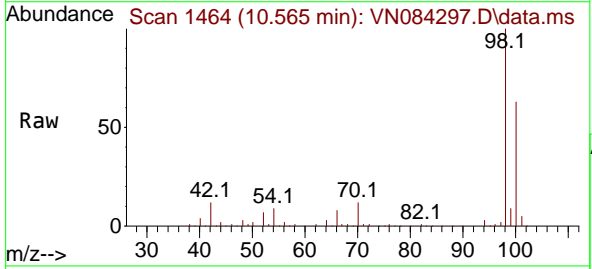


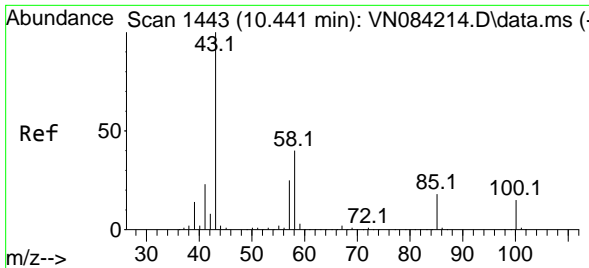
Tgt Ion	Resp	Lower	Upper
88	100		
43	0.0	25.3	37.9#
58	68.8	56.4	84.6



#50
 Toluene-d8
 Concen: 51.206 ug/l
 RT: 10.565 min Scan# 1464
 Delta R.T. -0.000 min
 Lab File: VN084297.D
 Acq: 03 Oct 2024 14:39

Tgt Ion	Resp	Lower	Upper
98	100		
100	64.0	52.7	79.1

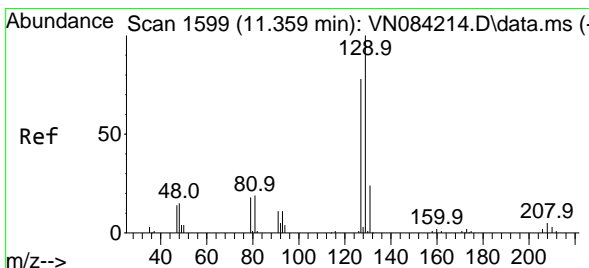
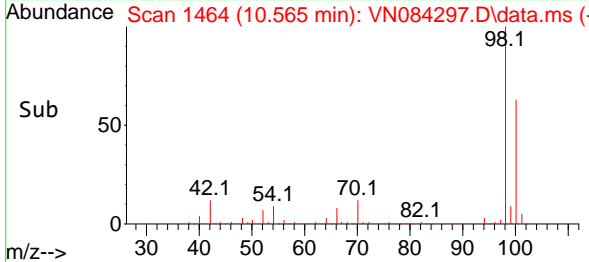
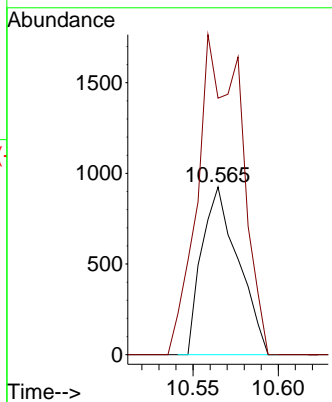
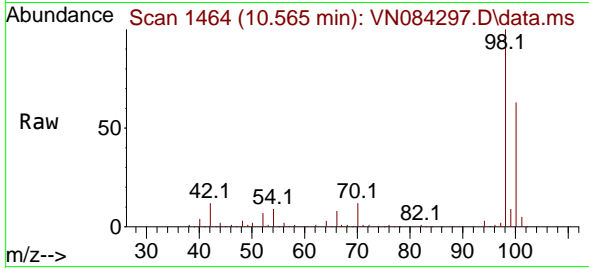




#51
 4-Methyl-2-Pentanone
 Concen: 0.543 ug/l
 RT: 10.565 min Scan# 14
 Delta R.T. 0.123 min
 Lab File: VN084297.D
 Acq: 03 Oct 2024 14:39

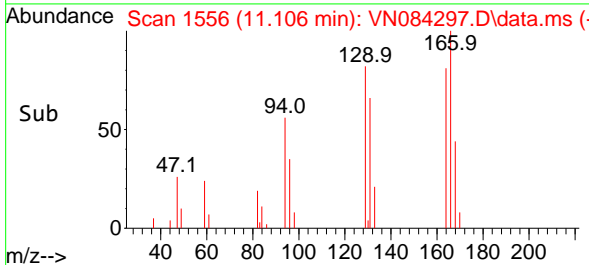
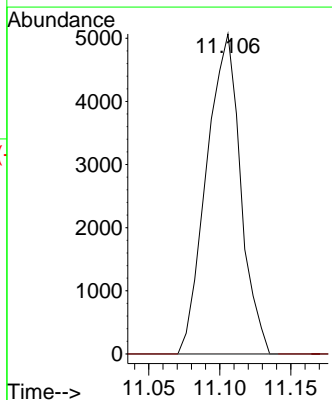
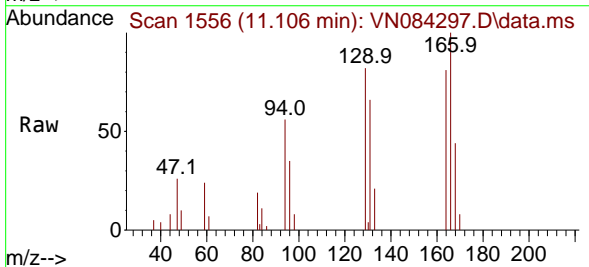
Instrument :
 MSVOA_N
 ClientSampleId :
 RW4-20240927

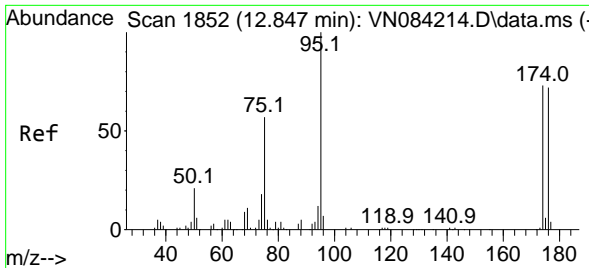
Tgt Ion: 43 Resp: 1376
 Ion Ratio Lower Upper
 43 100
 58 228.1 31.6 47.4#



#60
 Dibromochloromethane
 Concen: 4.057 ug/l
 RT: 11.106 min Scan# 1556
 Delta R.T. -0.253 min
 Lab File: VN084297.D
 Acq: 03 Oct 2024 14:39

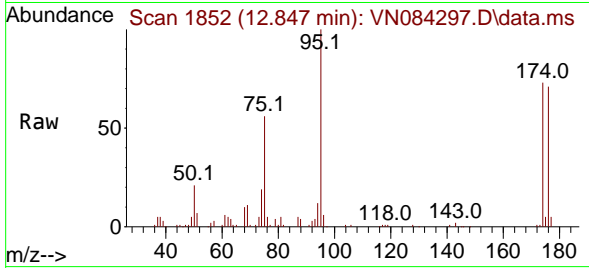
Tgt Ion: 129 Resp: 8469
 Ion Ratio Lower Upper
 129 100
 127 0.0 38.3 114.9#





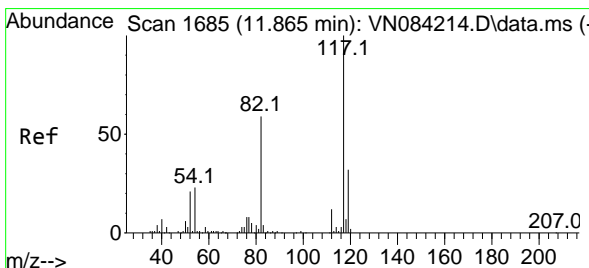
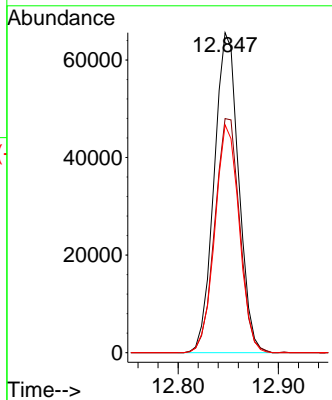
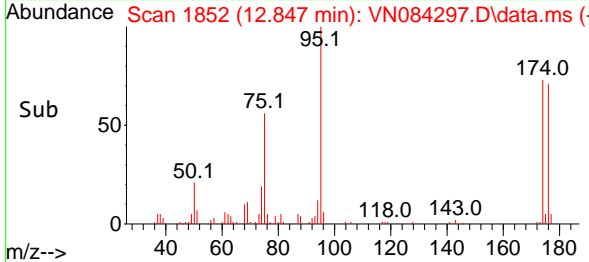
#62
 4-Bromofluorobenzene
 Concen: 46.419 ug/l
 RT: 12.847 min Scan# 1852
 Delta R.T. -0.000 min
 Lab File: VN084297.D
 Acq: 03 Oct 2024 14:39

Instrument : MSVOA_N
 ClientSampleId : RW4-20240927

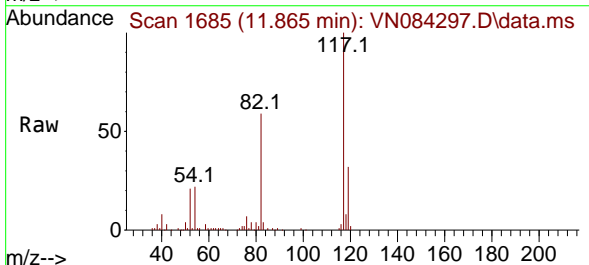


Tgt Ion: 95 Resp: 111110

Ion	Ratio	Lower	Upper
95	100		
174	74.3	0.0	145.2
176	70.7	0.0	140.0

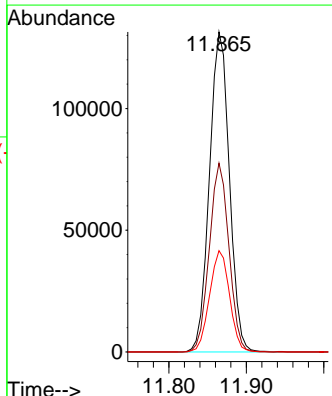
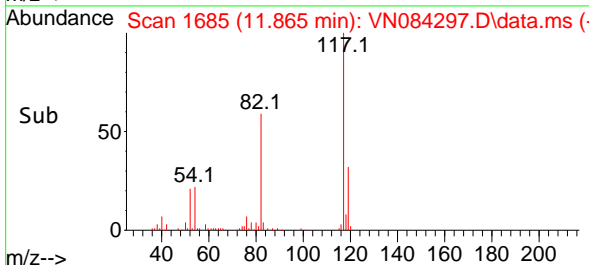


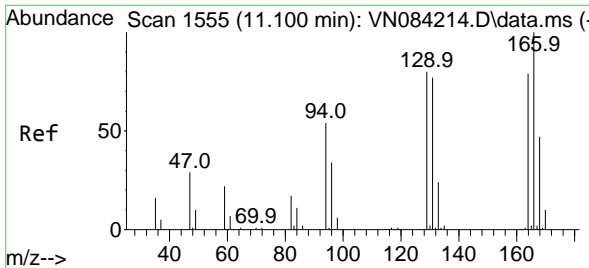
#63
 Chlorobenzene-d5
 Concen: 50.000 ug/l
 RT: 11.865 min Scan# 1685
 Delta R.T. -0.000 min
 Lab File: VN084297.D
 Acq: 03 Oct 2024 14:39



Tgt Ion: 117 Resp: 234558

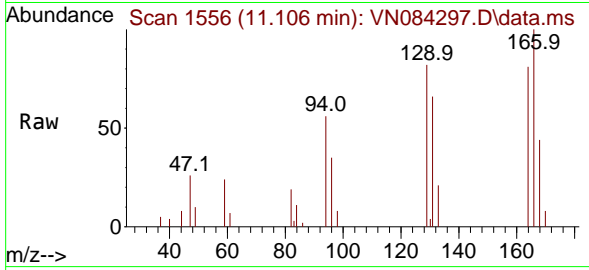
Ion	Ratio	Lower	Upper
117	100		
82	59.0	47.2	70.8
119	31.7	25.4	38.0





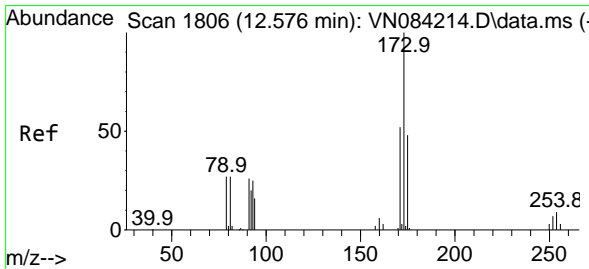
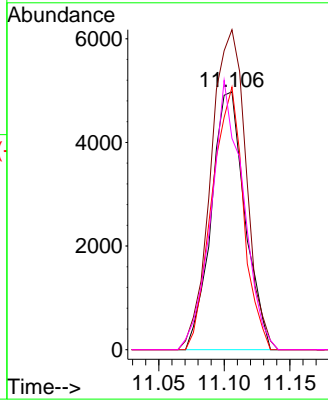
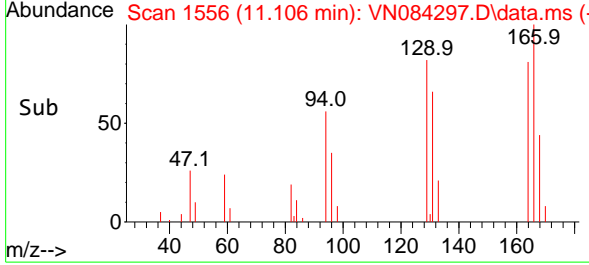
#64
 Tetrachloroethene
 Concen: 5.408 ug/l
 RT: 11.106 min Scan# 11106
 Delta R.T. 0.006 min
 Lab File: VN084297.D
 Acq: 03 Oct 2024 14:39

Instrument : MSVOA_N
 ClientSampleId : RW4-20240927

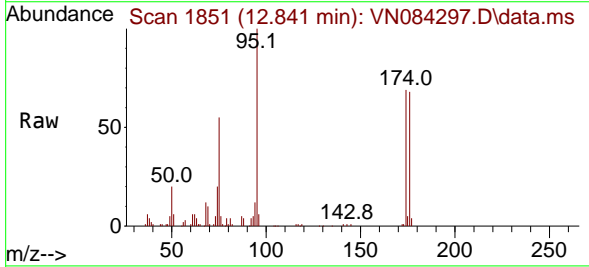


Tgt Ion:164 Resp: 8835

Ion	Ratio	Lower	Upper
164	100		
166	124.1	101.0	151.4
129	101.8	80.8	121.2
131	82.0	78.1	117.1

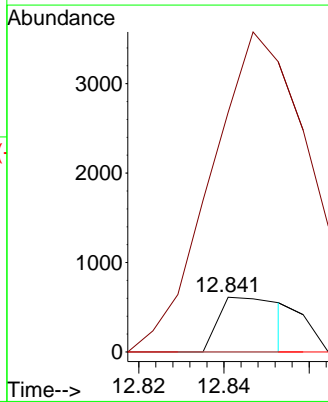
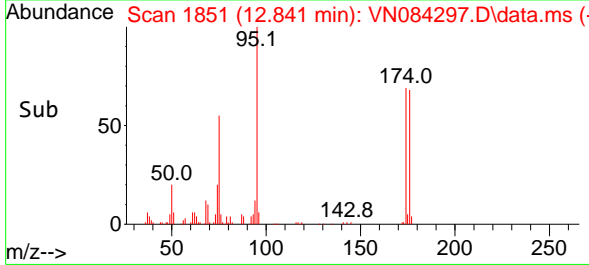


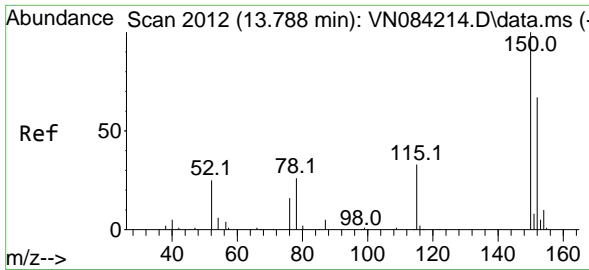
#71
 Bromoform
 Concen: 0.471 ug/l
 RT: 12.841 min Scan# 1851
 Delta R.T. 0.265 min
 Lab File: VN084297.D
 Acq: 03 Oct 2024 14:39



Tgt Ion:173 Resp: 621

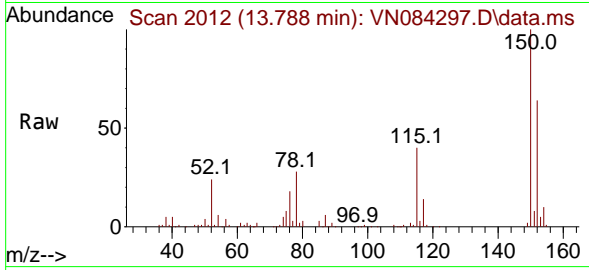
Ion	Ratio	Lower	Upper
173	100		
175	686.5	23.5	70.6#
254	0.0	0.0	0.0



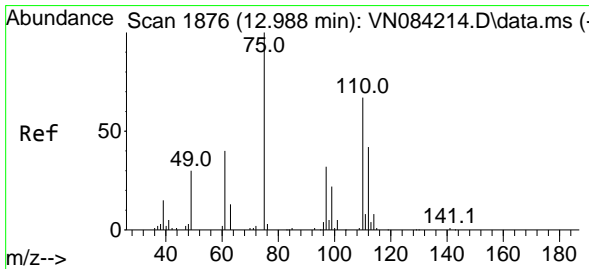
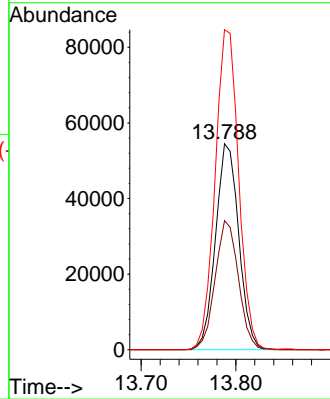
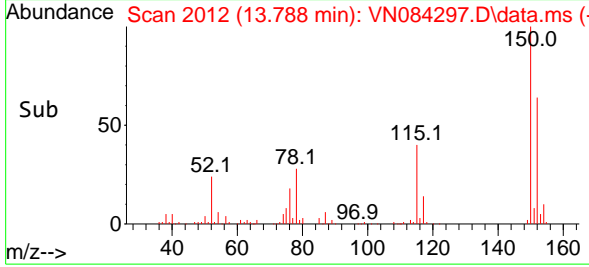


#72
 1,4-Dichlorobenzene-d4
 Concen: 50.000 ug/l
 RT: 13.788 min Scan# 2012
 Delta R.T. -0.000 min
 Lab File: VN084297.D
 Acq: 03 Oct 2024 14:39

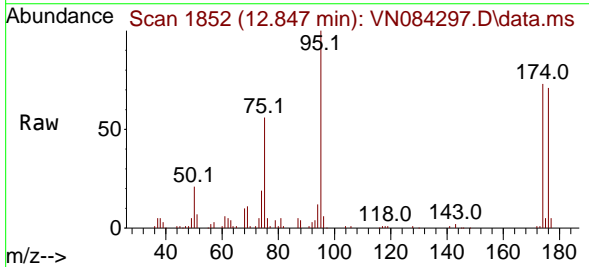
Instrument : MSVOA_N
 ClientSampleId : RW4-20240927



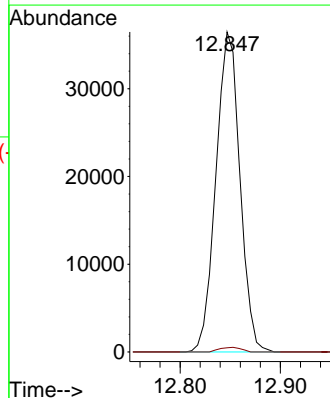
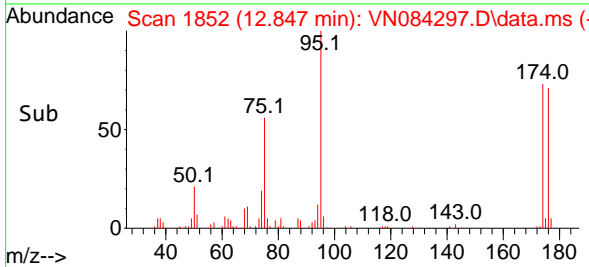
Tgt Ion:152 Resp: 92894
 Ion Ratio Lower Upper
 152 100
 115 62.9 31.3 93.9
 150 157.2 0.0 349.8

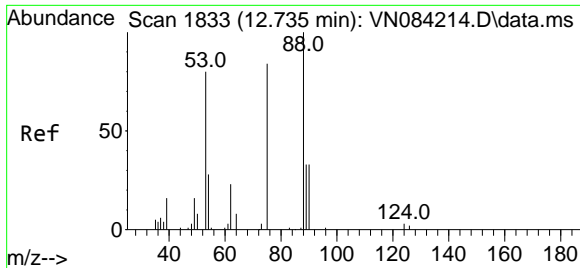


#76
 1,2,3-Trichloropropane
 Concen: 31.941 ug/l
 RT: 12.847 min Scan# 1852
 Delta R.T. -0.141 min
 Lab File: VN084297.D
 Acq: 03 Oct 2024 14:39



Tgt Ion: 75 Resp: 60574
 Ion Ratio Lower Upper
 75 100
 77 1.3 96.9 290.7#





#81
 trans-1,4-Dichloro-2-butene
 Concen: 76.576 ug/l
 RT: 12.847 min Scan# 11
 Delta R.T. 0.112 min
 Lab File: VN084297.D
 Acq: 03 Oct 2024 14:39

Instrument :
 MSVOA_N
 ClientSampleId :
 RW4-20240927

Tgt Ion: 75 Resp: 60574

Ion	Ratio	Lower	Upper
75	100		
53	0.0	78.0	117.0#
89	0.0	35.5	53.3#

