

Data Path : Z:\voasrv\HPCHEM1\MSVOA\_N\Data\VN100423\  
 Data File : VN079417.D  
 Acq On : 04 Oct 2023 20:49  
 Operator : JC\MD  
 Sample : 04689-02  
 Misc : 5.0mL/MSVOA\_N/WATER  
 ALS Vial : 20 Sample Multiplier: 1

Instrument :  
 MSVOA\_N  
 ClientSampleId :  
 TB

Integration Parameters: RTEINT.P

Integrator: RTE

Smoothing : ON

Filtering: 5

Sampling : 1

Min Area: 3 % of largest Peak

Start Thrs: 0.2

Max Peaks: 100

Stop Thrs : 0

Peak Location: TOP

If leading or trailing edge < 100 prefer < Baseline drop else tangent >

Peak separation: 5

Method : Z:\voasrv\HPCHEM1\MSVOA\_N\methods\82N091123W.M

Title : SW846 8260

Signal : TIC: VN079417.D\data.ms

peak #	R.T. min	first scan	max scan	last scan	PK TY	peak height	corr. area	corr. % max.	% of total
1	2.295	51	58	65	rBV2	10576	27581	3.76%	0.694%
2	2.842	140	151	158	rVB7	14112	43851	5.98%	1.104%
3	8.177	1047	1058	1062	rBV2	121295	294355	40.14%	7.411%
4	8.229	1062	1067	1078	rVB	186690	400392	54.60%	10.080%
5	8.588	1119	1128	1135	rBV	136847	307182	41.89%	7.734%
6	8.682	1135	1144	1145	rBV3	24632	57558	7.85%	1.449%
7	9.106	1207	1216	1227	rBV	304405	635300	86.63%	15.994%
8	10.570	1457	1465	1478	rBV	401343	733341	100.00%	18.462%
9	11.870	1677	1686	1696	rBV	392775	681172	92.89%	17.149%
10	12.853	1845	1853	1864	rVB	251778	427921	58.35%	10.773%
11	13.794	2006	2013	2022	rBV	217092	363422	49.56%	9.149%

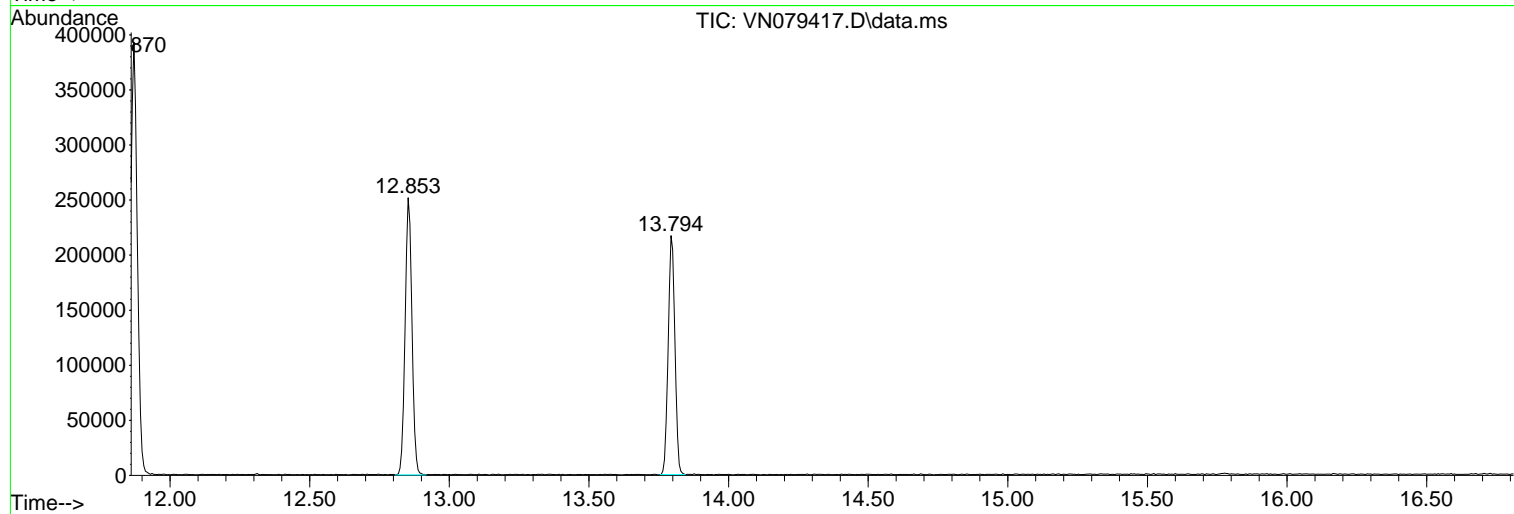
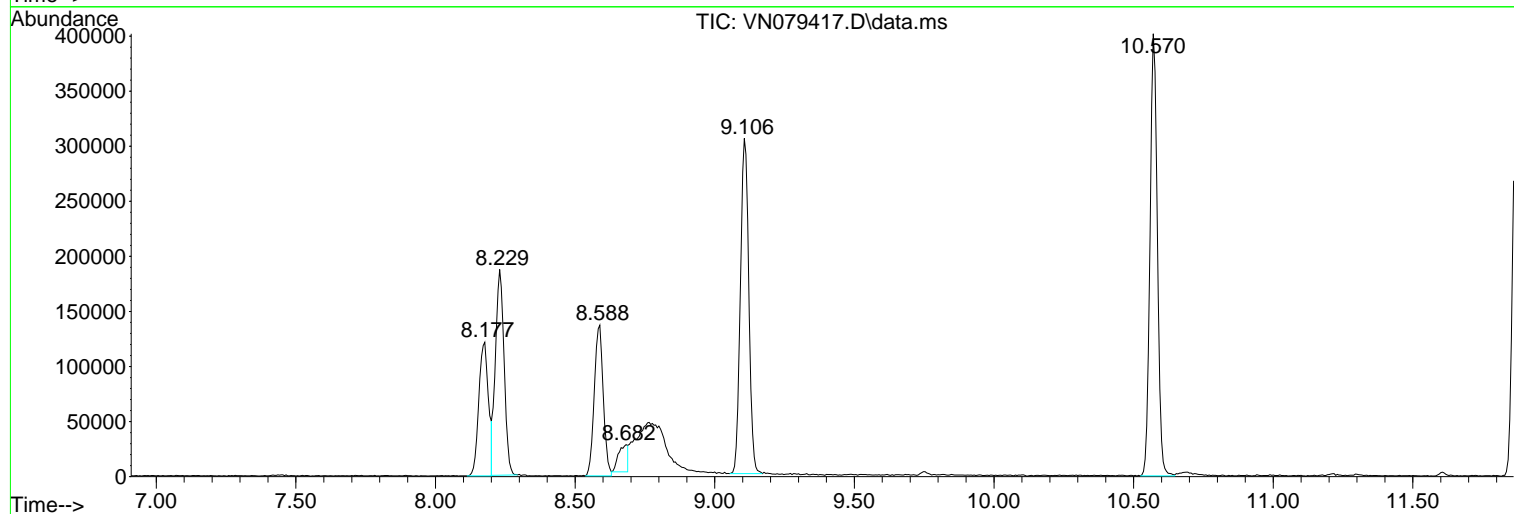
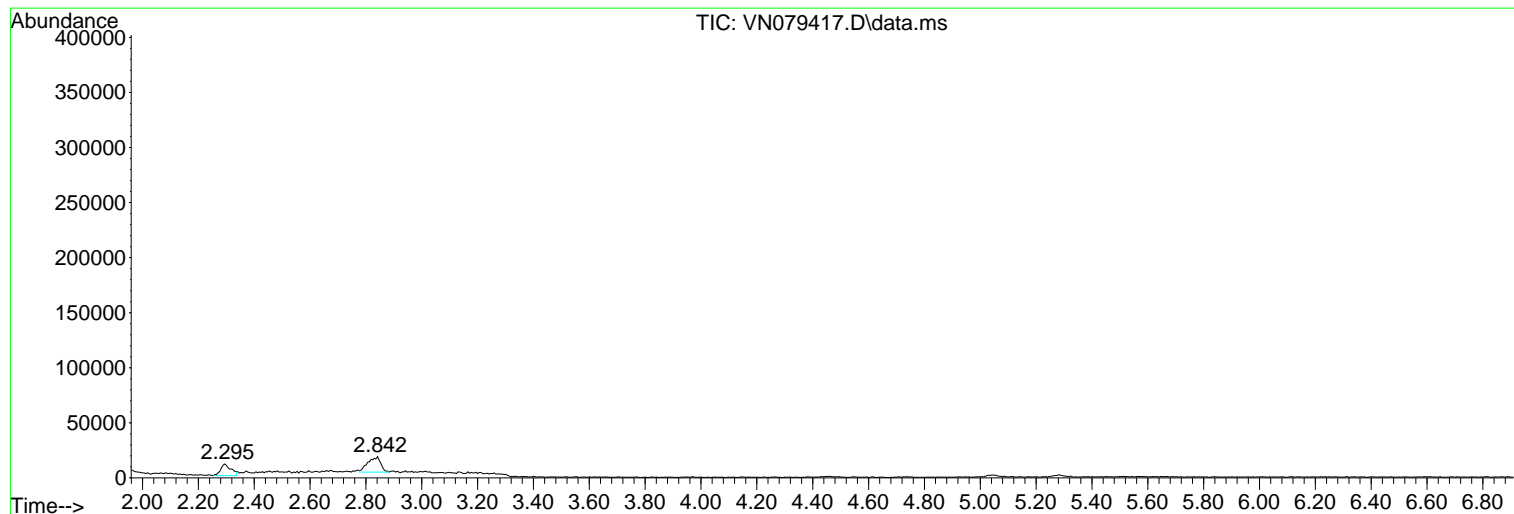
Sum of corrected areas: 3972075

Data Path : Z:\voasrv\HPCHEM1\MSVOA\_N\Data\VN100423\  
Data File : VN079417.D  
Acq On : 04 Oct 2023 20:49  
Operator : JC\MD  
Sample : 04689-02  
Misc : 5.0mL/MSVOA\_N/WATER  
ALS Vial : 20 Sample Multiplier: 1

Instrument :  
MSVOA\_N  
ClientSampleId :  
TB

Quant Method : Z:\voasrv\HPCHEM1\MSVOA\_N\methods\82N091123W.M  
Quant Title : SW846 8260

TIC Library : C:\Database\NIST20.L  
TIC Integration Parameters: LSCINT.P



Library Search Compound Report

Data Path : Z:\voasrv\HPCHEM1\MSVOA\_N\Data\VN100423\  
Data File : VN079417.D  
Acq On : 04 Oct 2023 20:49  
Operator : JC\MD  
Sample : 04689-02  
Misc : 5.0mL/MSVOA\_N/WATER  
ALS Vial : 20 Sample Multiplier: 1

Instrument :  
MSVOA\_N  
ClientSampleId :  
TB

Quant Method : Z:\voasrv\HPCHEM1\MSVOA\_N\methods\82N091123W.M  
Quant Title : SW846 8260

TIC Library : C:\Database\NIST20.L  
TIC Integration Parameters: LSCINT.P

No Library Search Compounds Detected

\*\*\*\*\*

Data Path : Z:\voasrv\HPCHEM1\MSVOA\_N\Data\VN100423\  
Data File : VN079417.D  
Acq On : 04 Oct 2023 20:49  
Operator : JC\MD  
Sample : 04689-02  
Misc : 5.0mL/MSVOA\_N/WATER  
ALS Vial : 20 Sample Multiplier: 1

Instrument :  
MSVOA\_N  
ClientSampleId :  
TB

Quant Method : Z:\voasrv\HPCHEM1\MSVOA\_N\methods\82N091123W.M  
Quant Title : SW846 8260

TIC Library : C:\Database\NIST20.L  
TIC Integration Parameters: LSCINT.P

TIC Top Hit name	RT	EstConc	Units	Response	--Internal Standard--		
					#	RT	Resp Conc

---