

Data Path : Z:\voasrv\HPCHEM1\MSVOA_N\Data\VN100424\
 Data File : VN084319.D
 Acq On : 04 Oct 2024 16:20
 Operator : JC\MD
 Sample : P4271-04 5X
 Misc : 5.0mL/MSVOA_N/WATER
 ALS Vial : 15 Sample Multiplier: 1

Instrument :
 MSVOA_N
 ClientSampleId :

Quant Time: Oct 04 23:00:45 2024
 Quant Method : Z:\voasrv\HPCHEM1\MSVOA_N\methods\624N090624W.M
 Quant Title : METHOD 624 VOLATILE ORGANIC ANALYSIS
 QLast Update : Fri Sep 06 23:42:47 2024
 Response via : Initial Calibration

Compound	R.T.	QIon	Response	Conc	Units	Dev(Min)

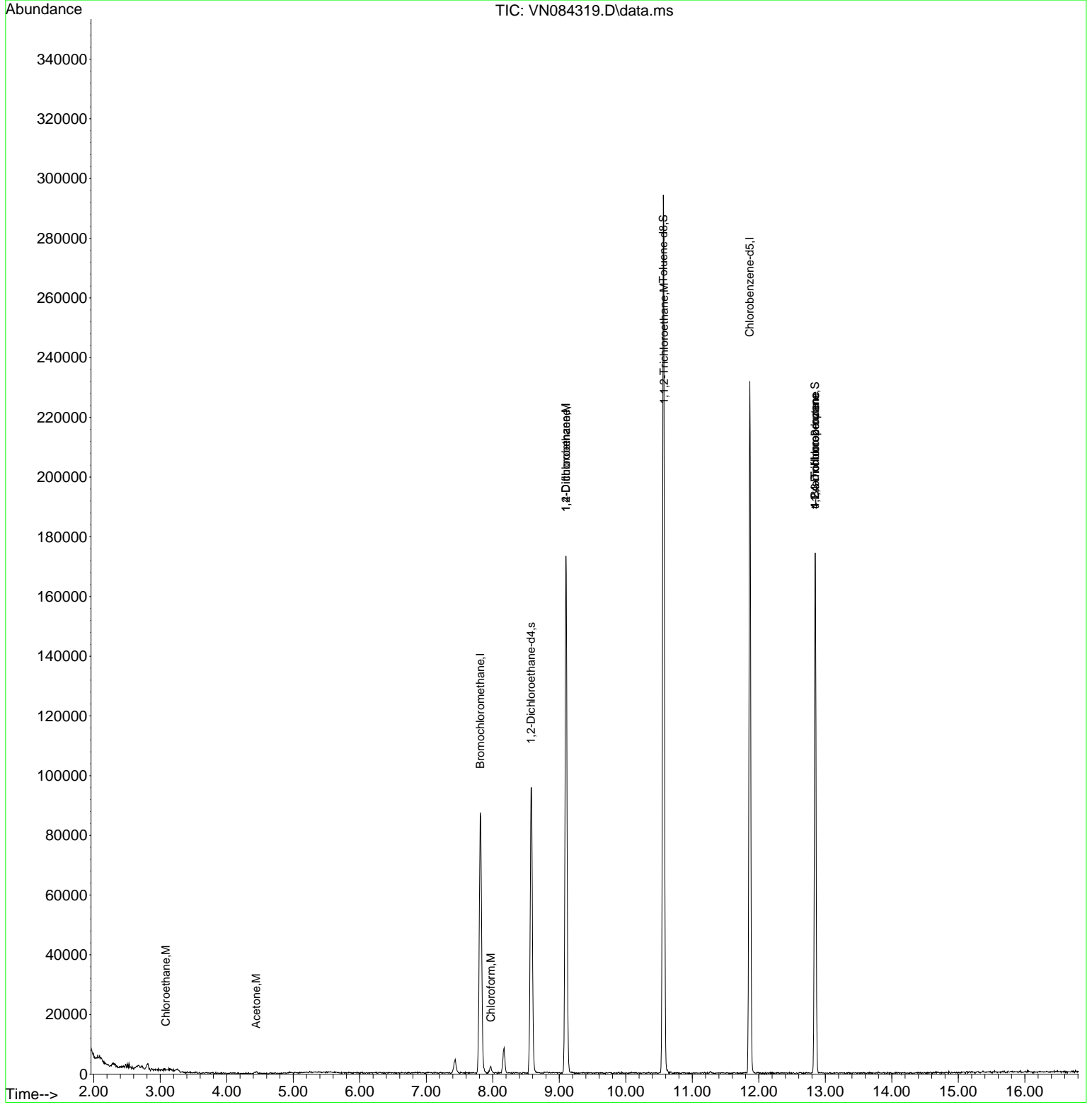
Internal Standards						
1) Bromochloromethane	7.812	128	30090	30.000	ug/l	0.00
28) 1,4-Difluorobenzene	9.100	114	145998	30.000	ug/l	0.00
57) Chlorobenzene-d5	11.865	117	133646	30.000	ug/l	0.00
System Monitoring Compounds						
27) 1,2-Dichloroethane-d4	8.577	65	82077	29.841	ug/l	0.00
Spiked Amount	30.000	Range 91 - 110	Recovery	=	99.467%	
60) 4-Bromofluorobenzene	12.847	95	60982	26.475	ug/l	0.00
Spiked Amount	30.000	Range 63 - 112	Recovery	=	88.267%	
63) Toluene-d8	10.565	98	203686	32.915	ug/l	0.00
Spiked Amount	30.000	Range 91 - 112	Recovery	=	109.700%	
Target Compounds						
						Qvalue
6) Chloroethane	3.083	64	293	0.203	ug/l #	41
15) Acetone	4.441	58	127	0.419	ug/l #	1
25) Chloroform	7.971	83	2270	0.566	ug/l #	71
36) 1,2-Dichloroethane	9.100	62	5072	1.942	ug/l #	72
50) 1,1,2-Trichloroethane	10.576	97	7217	4.639	ug/l #	1
72) 1,2,3-Trichloropropane	12.847	75	33576	17.081	ug/l	1
77) t-1,4-Dichloro-2-butene	12.847	75	33576	40.411	ug/l #	12

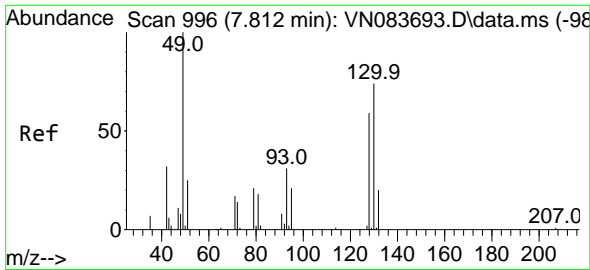
(#) = qualifier out of range (m) = manual integration (+) = signals summed

Data Path : Z:\voasrv\HPCHEM1\MSVOA_N\Data\VN100424\
Data File : VN084319.D
Acq On : 04 Oct 2024 16:20
Operator : JC\MD
Sample : P4271-04 5X
Misc : 5.0mL/MSVOA_N/WATER
ALS Vial : 15 Sample Multiplier: 1

Instrument :
MSVOA_N
ClientSampleId :

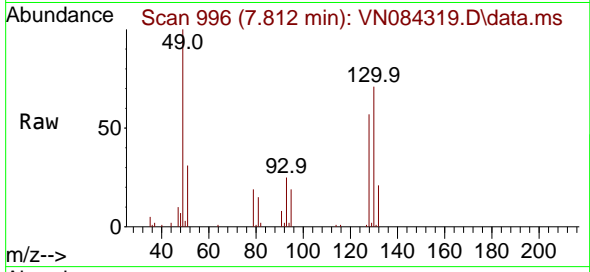
Quant Time: Oct 04 23:00:45 2024
Quant Method : Z:\voasrv\HPCHEM1\MSVOA_N\methods\624N090624W.M
Quant Title : METHOD 624 VOLATILE ORGANIC ANALYSIS
QLast Update : Fri Sep 06 23:42:47 2024
Response via : Initial Calibration



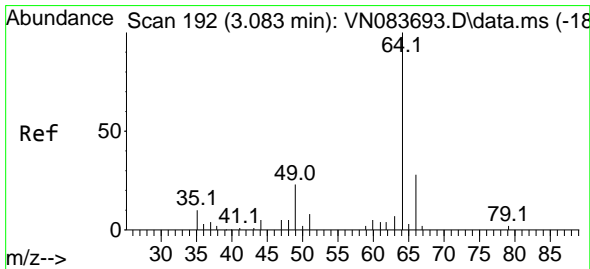
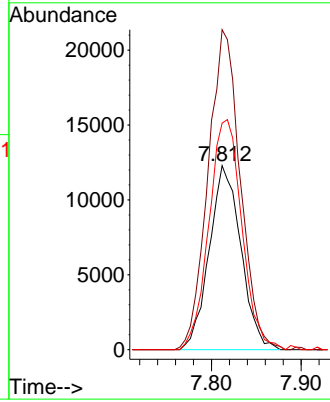
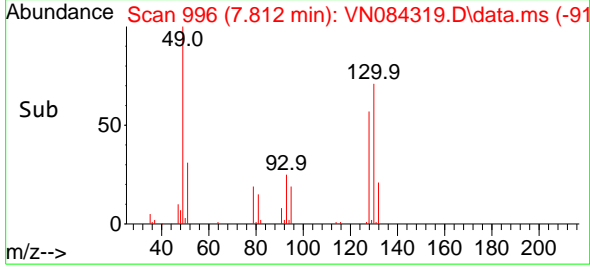


#1
 Bromochloromethane
 Concen: 30.000 ug/l
 RT: 7.812 min Scan# 996
 Delta R.T. -0.000 min
 Lab File: VN084319.D
 Acq: 04 Oct 2024 16:20

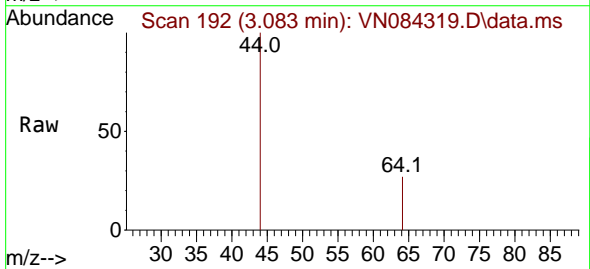
Instrument : MSVOA_N
 ClientSampleId :



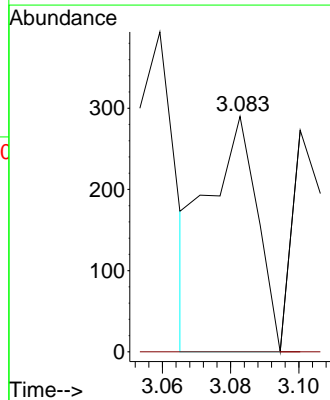
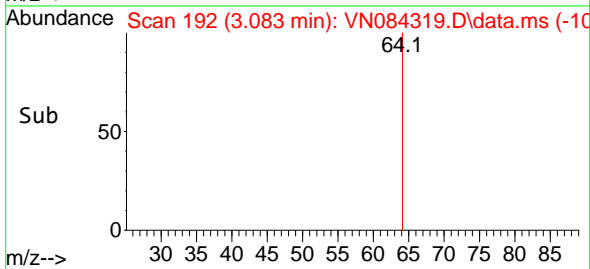
Tgt Ion:128 Resp: 30090
 Ion Ratio Lower Upper
 128 100
 49 176.9 0.0 403.7
 130 130.4 0.0 323.3

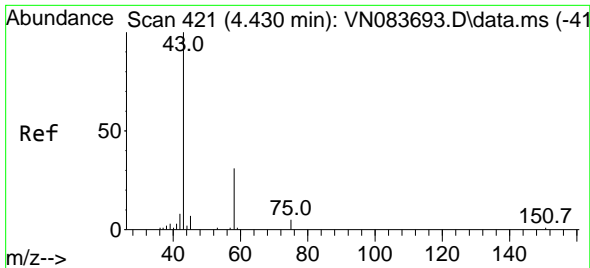


#6
 Chloroethane
 Concen: 0.203 ug/l
 RT: 3.083 min Scan# 192
 Delta R.T. -0.000 min
 Lab File: VN084319.D
 Acq: 04 Oct 2024 16:20



Tgt Ion: 64 Resp: 293
 Ion Ratio Lower Upper
 64 100
 66 0.0 26.7 40.1#

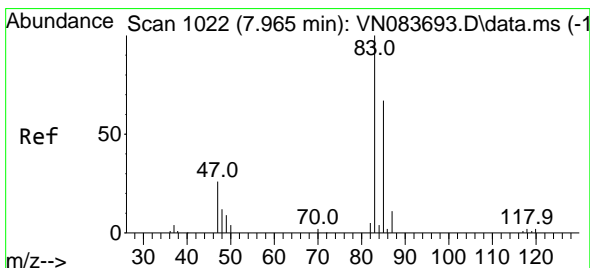
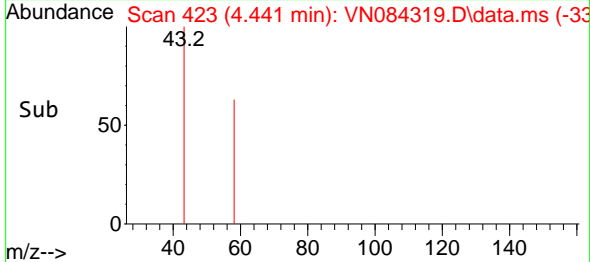
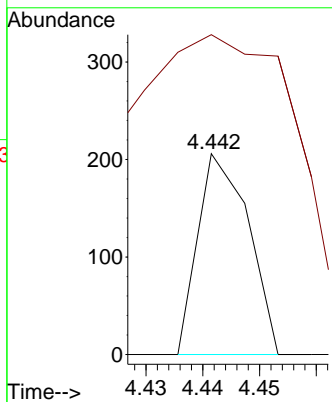
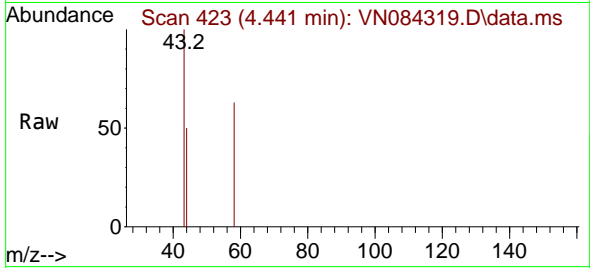




#15
 Acetone
 Concen: 0.419 ug/l
 RT: 4.441 min Scan# 41
 Delta R.T. 0.012 min
 Lab File: VN084319.D
 Acq: 04 Oct 2024 16:20

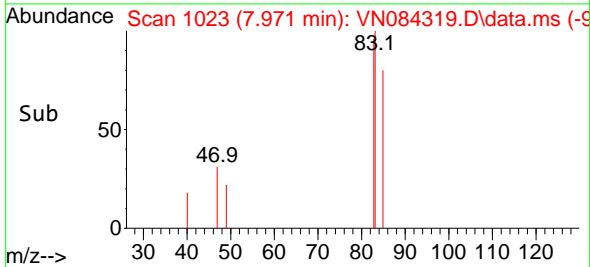
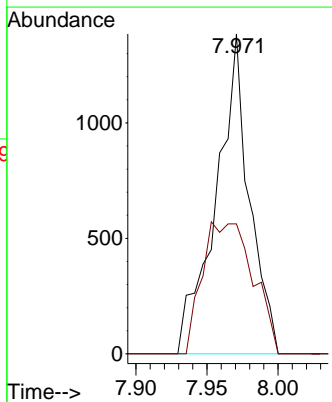
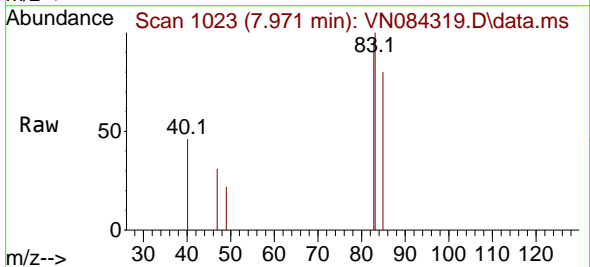
Instrument :
 MSVOA_N
 ClientSampleId :

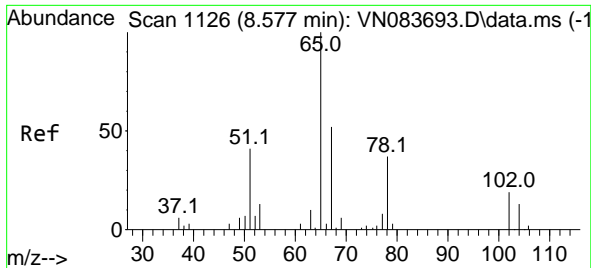
Tgt Ion: 58 Resp: 127
 Ion Ratio Lower Upper
 58 100
 43 10.7 223.1 334.7#



#25
 Chloroform
 Concen: 0.566 ug/l
 RT: 7.971 min Scan# 1023
 Delta R.T. 0.006 min
 Lab File: VN084319.D
 Acq: 04 Oct 2024 16:20

Tgt Ion: 83 Resp: 2270
 Ion Ratio Lower Upper
 83 100
 85 40.6 50.9 76.3#

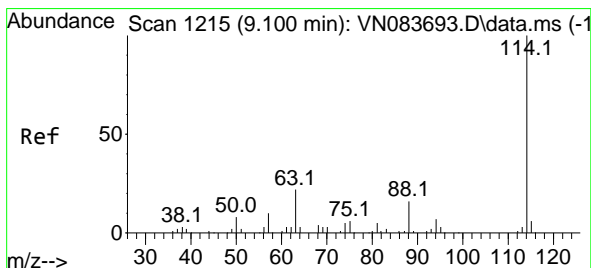
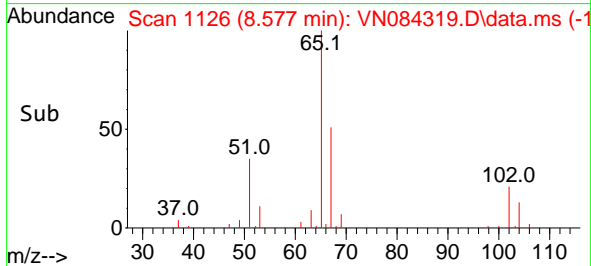
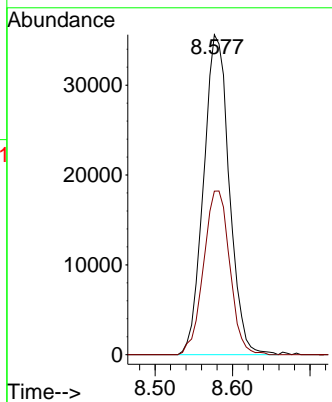
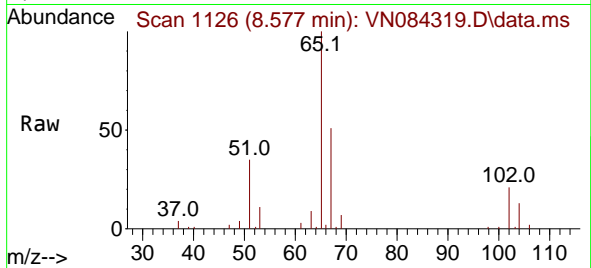




#27
 1,2-Dichloroethane-d4
 Concen: 29.841 ug/l
 RT: 8.577 min Scan# 1126
 Delta R.T. -0.000 min
 Lab File: VN084319.D
 Acq: 04 Oct 2024 16:20

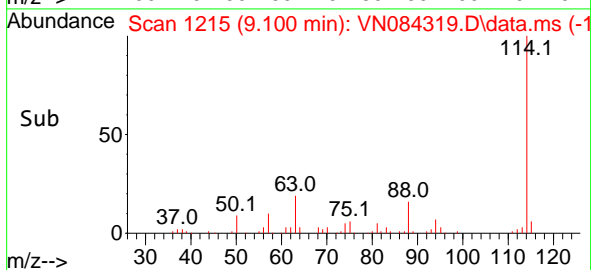
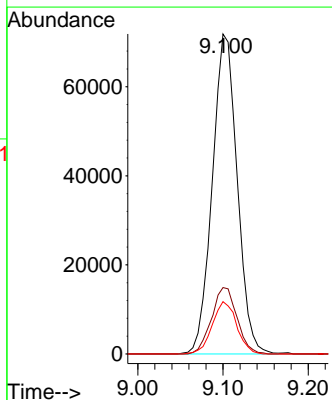
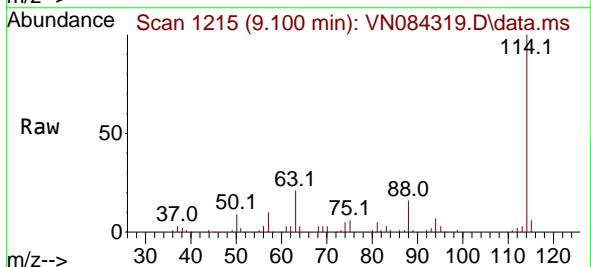
Instrument : MSVOA_N
 ClientSampleId :

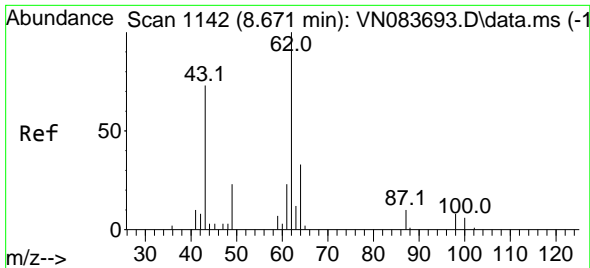
Tgt Ion: 65 Resp: 82077
 Ion Ratio Lower Upper
 65 100
 67 52.0 43.2 64.8



#28
 1,4-Difluorobenzene
 Concen: 30.000 ug/l
 RT: 9.100 min Scan# 1215
 Delta R.T. -0.000 min
 Lab File: VN084319.D
 Acq: 04 Oct 2024 16:20

Tgt Ion: 114 Resp: 145998
 Ion Ratio Lower Upper
 114 100
 63 21.2 15.9 23.9
 88 16.0 12.7 19.1

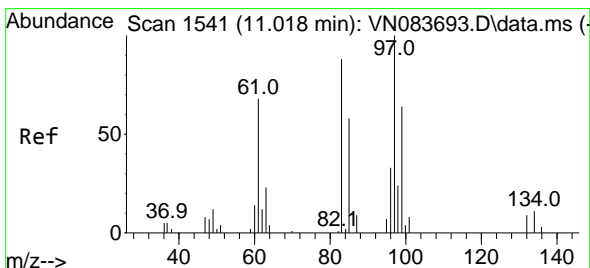
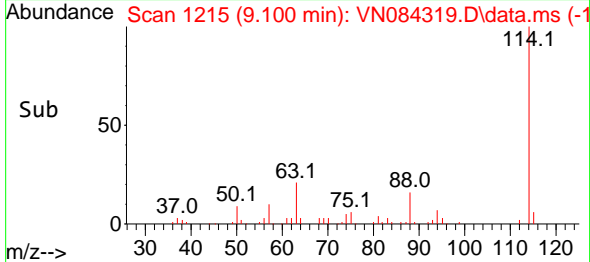
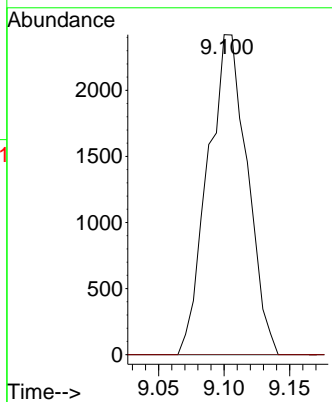
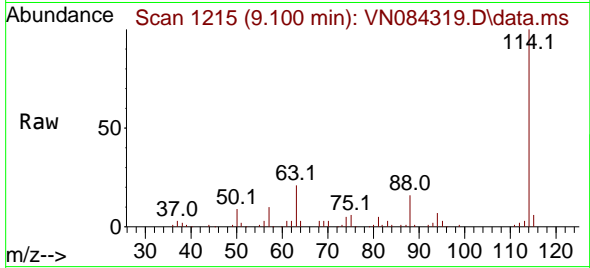




#36
 1,2-Dichloroethane
 Concen: 1.942 ug/l
 RT: 9.100 min Scan# 1142
 Delta R.T. 0.429 min
 Lab File: VN084319.D
 Acq: 04 Oct 2024 16:20

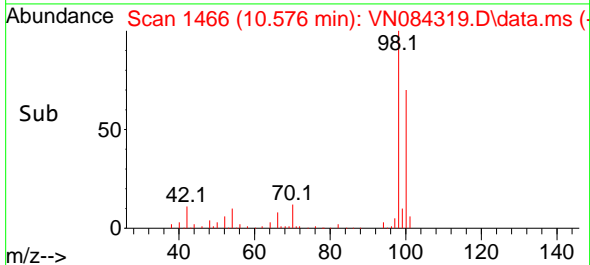
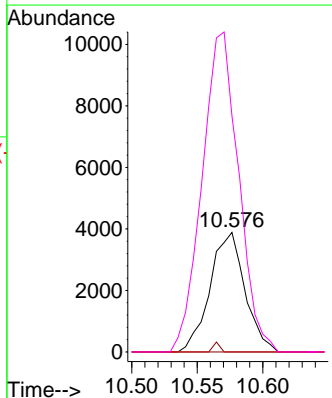
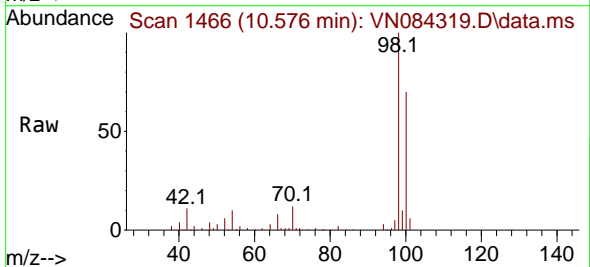
Instrument :
 MSVOA_N
 ClientSampleId :

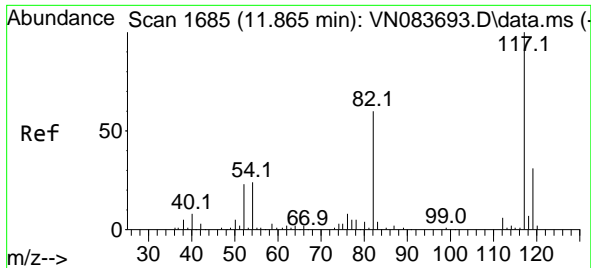
Tgt Ion: 62 Resp: 5072
 Ion Ratio Lower Upper
 62 100
 98 0.0 8.2 12.4#



#50
 1,1,2-Trichloroethane
 Concen: 4.639 ug/l
 RT: 10.576 min Scan# 1466
 Delta R.T. -0.441 min
 Lab File: VN084319.D
 Acq: 04 Oct 2024 16:20

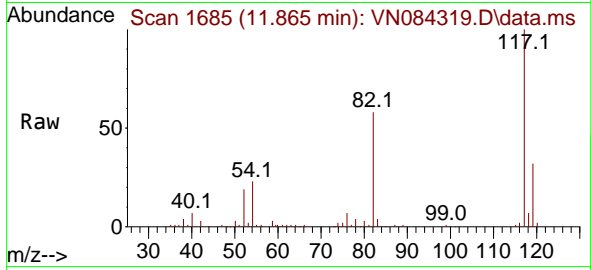
Tgt Ion: 97 Resp: 7217
 Ion Ratio Lower Upper
 97 100
 83 0.0 68.1 102.1#
 85 0.0 41.8 62.6#
 99 197.3 47.0 70.4#





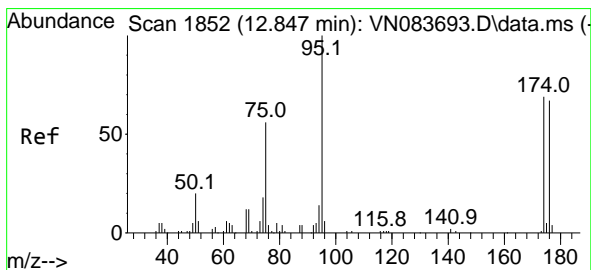
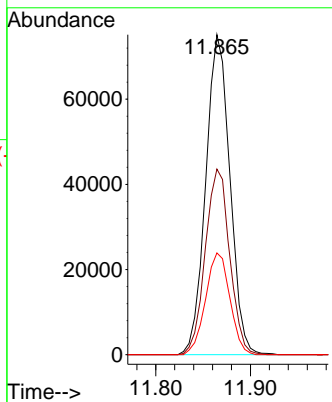
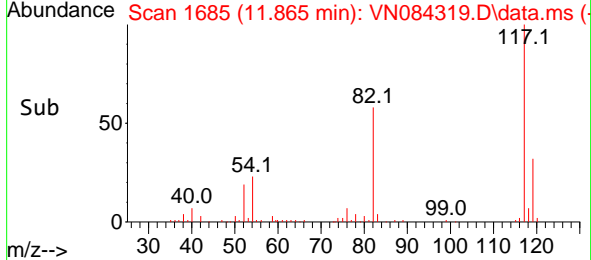
#57
 Chlorobenzene-d5
 Concen: 30.000 ug/l
 RT: 11.865 min Scan# 117
 Delta R.T. -0.000 min
 Lab File: VN084319.D
 Acq: 04 Oct 2024 16:20

Instrument : MSVOA_N
 ClientSampleId :

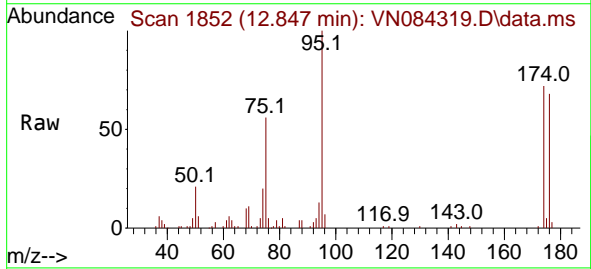


Tgt Ion:117 Resp: 133646

Ion	Ratio	Lower	Upper
117	100		
82	58.5	46.6	69.8
119	31.9	25.4	38.2

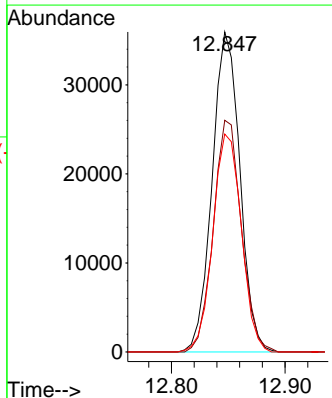
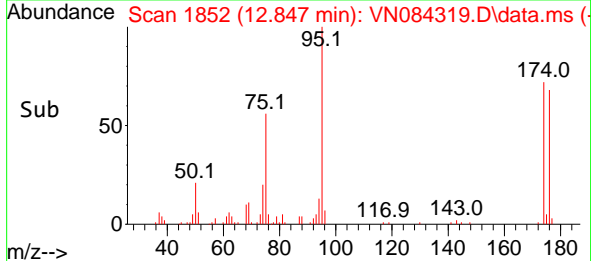


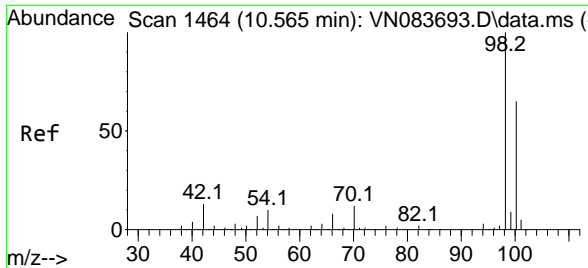
#60
 4-Bromofluorobenzene
 Concen: 26.475 ug/l
 RT: 12.847 min Scan# 1852
 Delta R.T. -0.000 min
 Lab File: VN084319.D
 Acq: 04 Oct 2024 16:20



Tgt Ion: 95 Resp: 60982

Ion	Ratio	Lower	Upper
95	100		
174	73.3	60.5	90.7
176	70.0	57.8	86.6

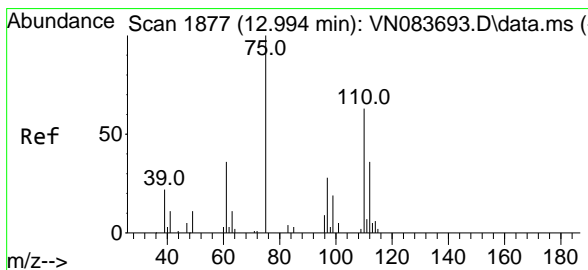
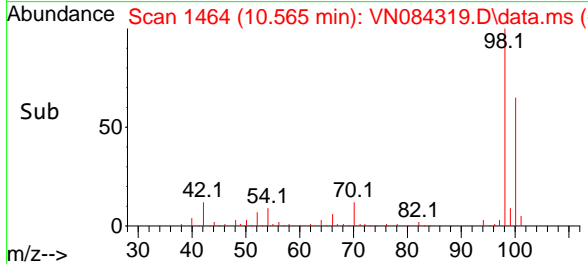
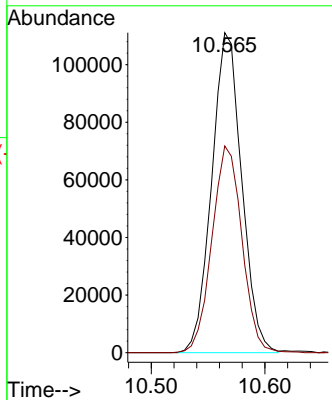
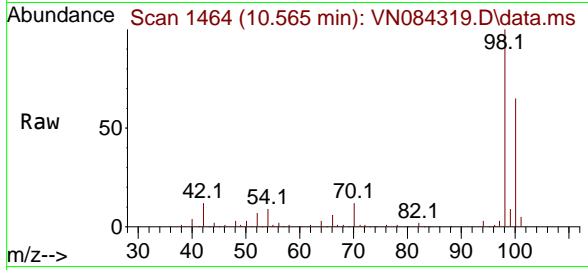




#63
 Toluene-d8
 Concen: 32.915 ug/l
 RT: 10.565 min Scan# 14
 Delta R.T. -0.000 min
 Lab File: VN084319.D
 Acq: 04 Oct 2024 16:20

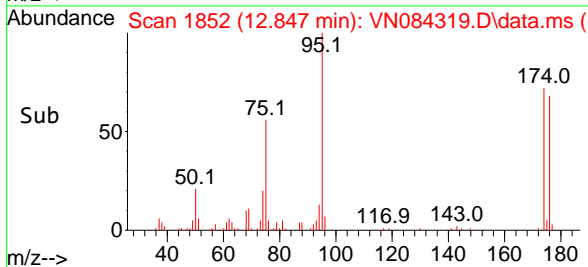
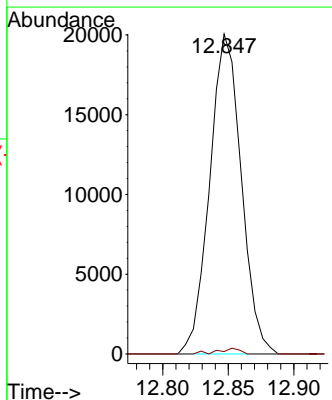
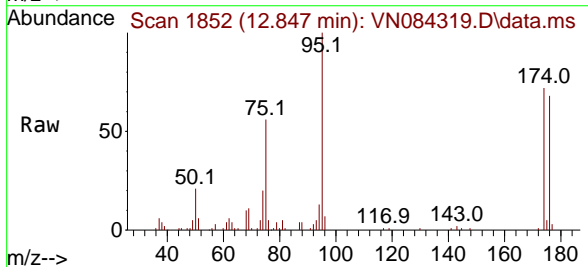
Instrument : MSVOA_N
 ClientSampleId :

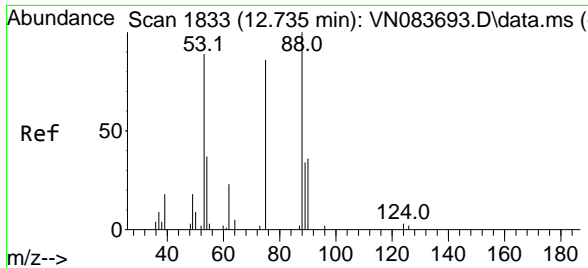
Tgt Ion: 98 Resp: 203686
 Ion Ratio Lower Upper
 98 100
 100 64.7 52.7 79.1



#72
 1,2,3-Trichloropropane
 Concen: 17.081 ug/l
 RT: 12.847 min Scan# 1852
 Delta R.T. -0.147 min
 Lab File: VN084319.D
 Acq: 04 Oct 2024 16:20

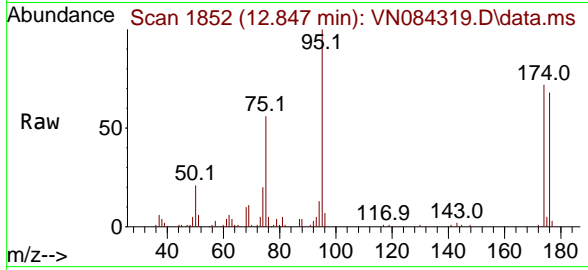
Tgt Ion: 75 Resp: 33576
 Ion Ratio Lower Upper
 75 100
 77 1.0 0.0 367.6





#77
 t-1,4-Dichloro-2-butene
 Concen: 40.411 ug/l
 RT: 12.847 min Scan# 18
 Delta R.T. 0.112 min
 Lab File: VN084319.D
 Acq: 04 Oct 2024 16:20

Instrument : MSVOA_N
 ClientSampleId :



Tgt Ion: 75 Resp: 33576

Ion	Ratio	Lower	Upper
75	100		
53	0.0	45.9	137.7#
89	0.0	25.9	77.7#

