

Data Path : Z:\VOASRV\HPCHEM1\MSVOA N\DATA\VN100520\
 Data File : VN063870.D
 Acq On : 5 Oct 2020 14:57
 Operator : JC/MD
 Sample : PB132063ZHE#02
 Misc : 5.00mL/MSVOA N/WATER
 ALS Vial : 13 Sample Multiplier: 1

Instrument :
 MSVOA_N
 ClientSampleId :
 PB132063ZHE#02

Quant Time: Oct 06 01:39:00 2020
 Quant Method : Z:\VOASRV\HPCHEM1\MSVOA_N\METHODS\82N093020W.M
 Quant Title : SW846 8260
 QLast Update : Thu Oct 01 01:46:38 2020
 Response via : Initial Calibration

Internal Standards	R.T.	QIon	Response	Conc	Units	Dev(Min)
1) Pentafluorobenzene	7.63	168	223695	50.00	ug/l	0.00
34) 1,4-Difluorobenzene	8.55	114	415764	50.00	ug/l	0.00
63) Chlorobenzene-d5	11.38	117	440734	50.00	ug/l	0.00
72) 1,4-Dichlorobenzene-d4	13.32	152	168943	50.00	ug/l	0.00

System Monitoring Compounds	R.T.	QIon	Response	Conc	Units	Dev(Min)
33) 1,2-Dichloroethane-d4	7.99	65	192988	52.22	ug/l	0.00
Spiked Amount				50.000		
Recovery						104.44%
35) Dibromofluoromethane	7.55	113	138478	48.00	ug/l	0.00
Spiked Amount				50.000		
Recovery						96.00%
50) Toluene-d8	10.06	98	543809	49.73	ug/l	0.00
Spiked Amount				50.000		
Recovery						99.46%
62) 4-Bromofluorobenzene	12.38	95	211278	51.39	ug/l	0.00
Spiked Amount				50.000		
Recovery						102.78%

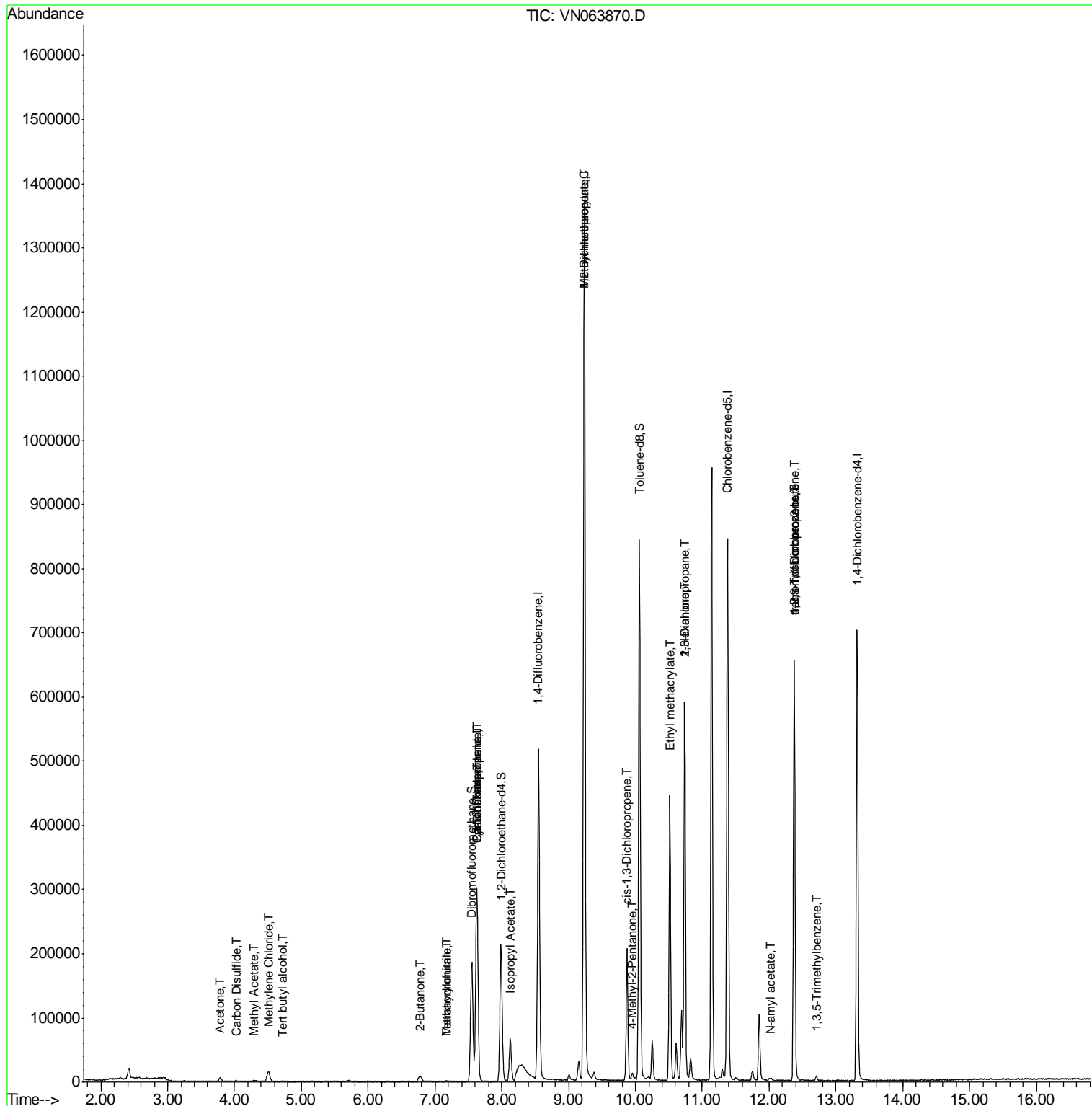
Target Compounds	R.T.	QIon	Response	Conc	Units	Qvalue
11) Tert butyl alcohol	4.72	59	264	0.647	ug/l #	71
16) Acetone	3.78	43	10456	9.191	ug/l	100
17) Carbon Disulfide	4.02	76	569	0.793	ug/l #	76
18) Methyl Acetate	4.29	43	3151	1.067	ug/l #	65
20) Methylene Chloride	4.51	84	12257	4.793	ug/l #	84
25) 2-Butanone	6.79	43	1064	0.660	ug/l #	89
29) Tetrahydrofuran	7.17	42	1324	1.224	ug/l #	66
31) Cyclohexane	7.62	56	6695	1.560	ug/l #	26
36) 1,1-Dichloropropene	7.63	75	21400	5.081	ug/l #	50
38) Carbon Tetrachloride	7.63	117	25081	5.310	ug/l #	15
41) Methacrylonitrile	7.16	41	415	0.223	ug/l #	26
43) Isopropyl Acetate	8.13	43	80769	11.701	ug/l	98
45) 1,2-Dichloropropane	9.23	63	896	0.276	ug/l #	44
48) Methyl methacrylate	9.23	41	146764	43.035	ug/l #	45
51) 4-Methyl-2-Pentanone	9.96	43	7099	1.753	ug/l	99
54) cis-1,3-Dichloropropene	9.87	75	31874	6.155	ug/l #	72
56) Ethyl methacrylate	10.51	69	2487	0.588	ug/l #	1
57) 1,3-Dichloropropane	10.74	76	5337	1.057	ug/l #	43
59) 2-Hexanone	10.74	43	90741	30.155	ug/l #	54
74) N-amyl acetate	12.01	43	1518	2.469	ug/l #	49
76) 1,2,3-Trichloropropane	12.38	75	120182	32.271	ug/l #	100
80) 1,3,5-Trimethylbenzene	12.71	105	3638	0.352	ug/l	95
81) trans-1,4-Dichloro-2-buten	12.38	75	120182	92.945	ug/l #	6

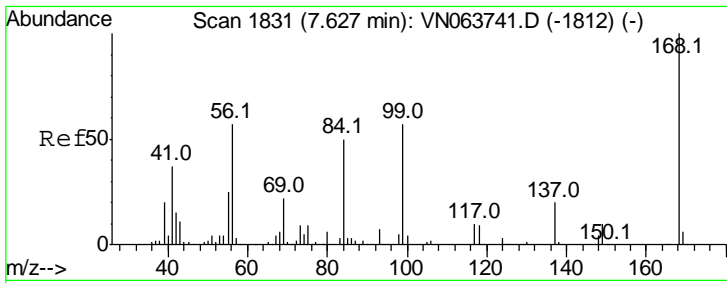
(#) = qualifier out of range (m) = manual integration (+) = signals summed

Data Path : Z:\VOASRV\HPCHEM1\MSVOA N\DATA\VN100520\
 Data File : VN063870.D
 Acq On : 5 Oct 2020 14:57
 Operator : JC/MD
 Sample : PB132063ZHE#02
 Misc : 5.00mL/MSVOA N/WATER
 ALS Vial : 13 Sample Multiplier: 1

Instrument :
 MSVOA_N
 Client Sampled :
 PB132063ZHE#02

Quant Time: Oct 06 01:39:00 2020
 Quant Method : Z:\VOASRV\HPCHEM1\MSVOA_N\METHODS\82N093020W.M
 Quant Title : SW846 8260
 QLast Update : Thu Oct 01 01:46:38 2020
 Response via : Initial Calibration

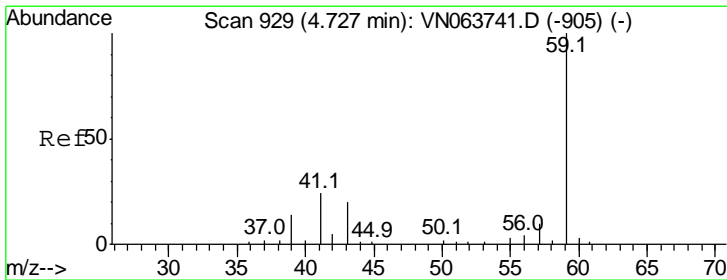
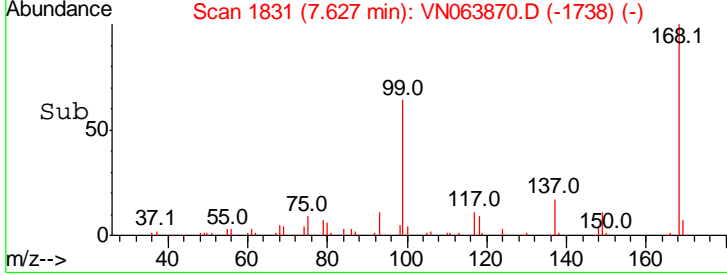
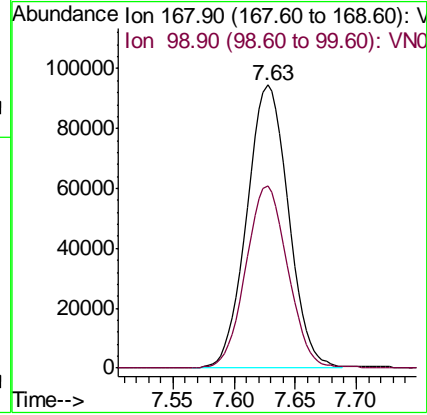
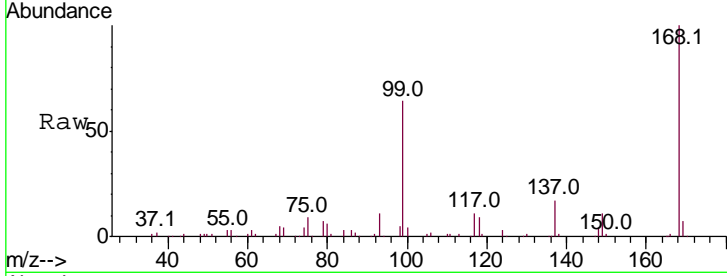




#1
 Pentafluorobenzene
 Concen: 50.000 ug/l
 RT: 7.63 min Scan# 1831
 Delta R.T. 0.00 min
 Lab File: VN063870.D
 Acq: 5 Oct 2020 14:57

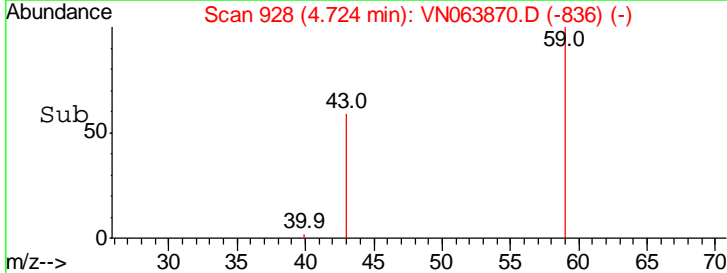
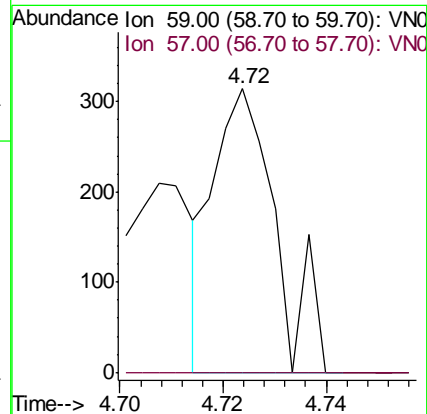
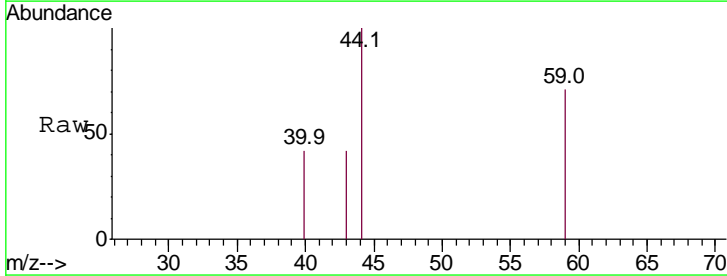
Instrument : MSVOA_N
 ClientSampled : PB132063ZHE#02

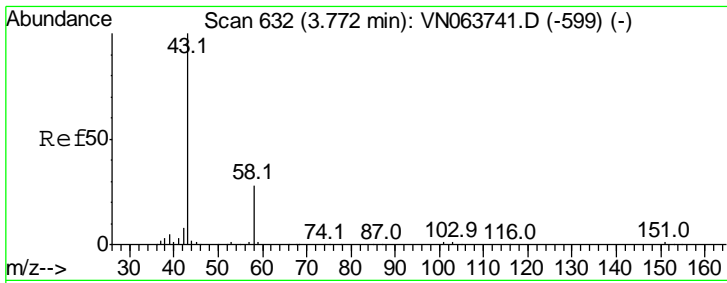
Tot Ion:168 Resp: 223695
 Ion Ratio Lower Upper
 168 100
 99 64.3 51.8 77.6



#11
 Tert butyl alcohol
 Concen: 0.647 ug/l
 RT: 4.72 min Scan# 928
 Delta R.T. -0.00 min
 Lab File: VN063870.D
 Acq: 5 Oct 2020 14:57

Tgt Ion: 59 Resp: 264
 Ion Ratio Lower Upper
 59 100
 57 0.0 8.7 13.1#

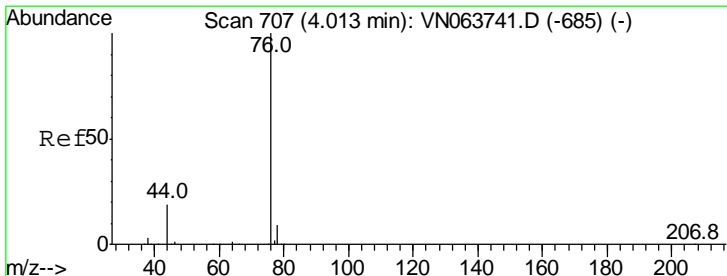
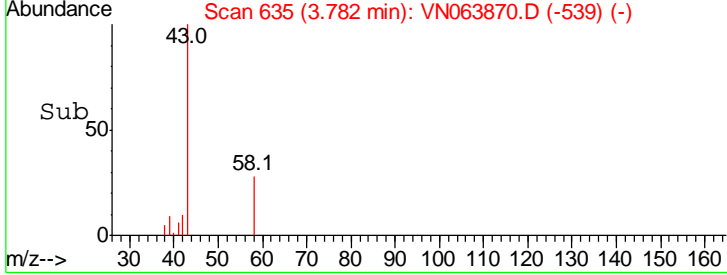
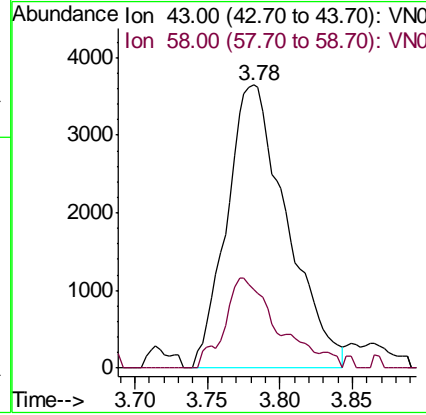
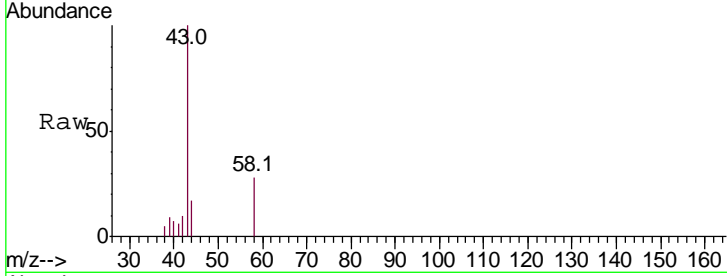




#16
 Acetone
 Concen: 9.191 ug/l
 RT: 3.78 min Scan# 635
 Delta R.T. 0.01 min
 Lab File: VN063870.D
 Acq: 5 Oct 2020 14:57

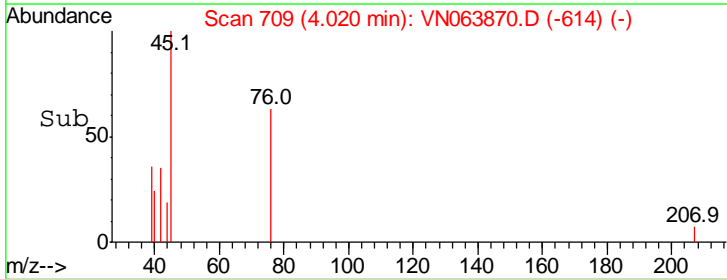
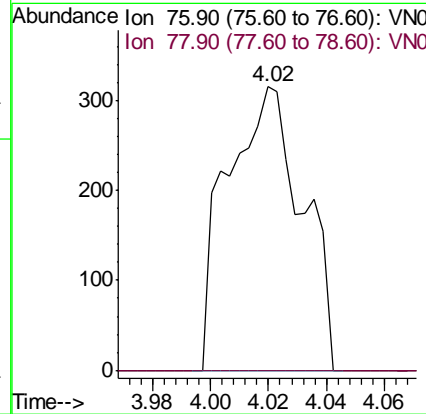
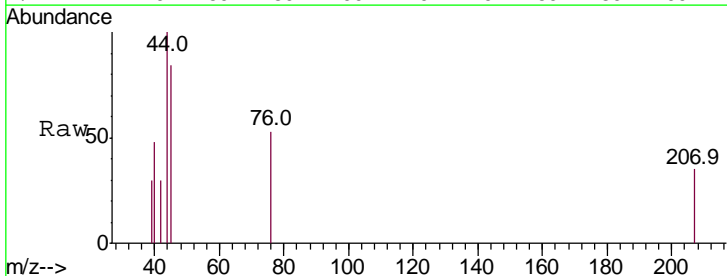
Instrument : MSVOA_N
 ClientSampleId : PB132063ZHE#02

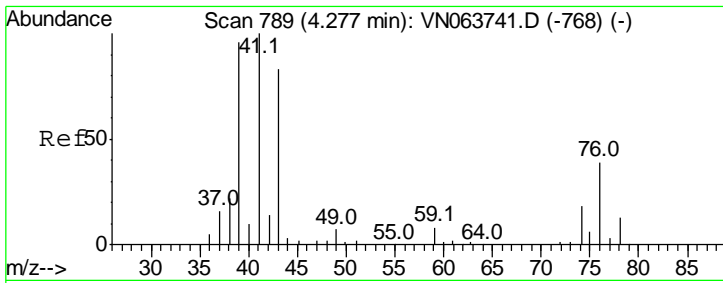
Tgt Ion	Resp	Lower	Upper
43	10456		
58	27.9	22.3	33.5



#17
 Carbon Disulfide
 Concen: 0.793 ug/l
 RT: 4.02 min Scan# 709
 Delta R.T. 0.01 min
 Lab File: VN063870.D
 Acq: 5 Oct 2020 14:57

Tgt Ion	Resp	Lower	Upper
76	569		
78	0.0	7.0	10.4#

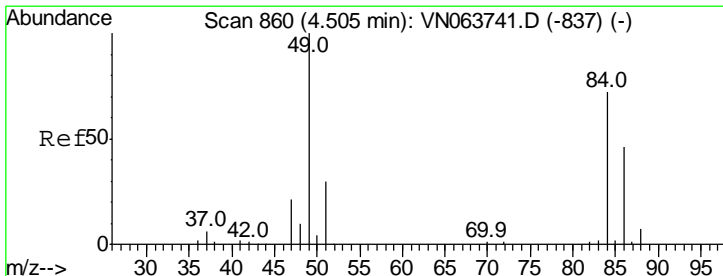
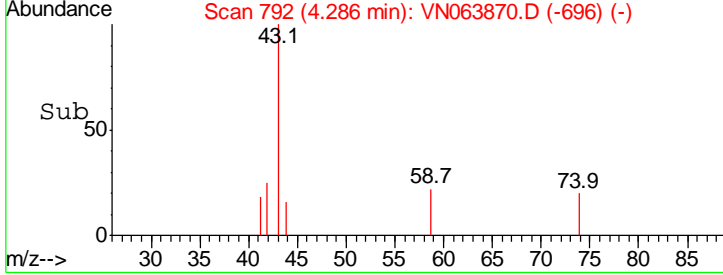
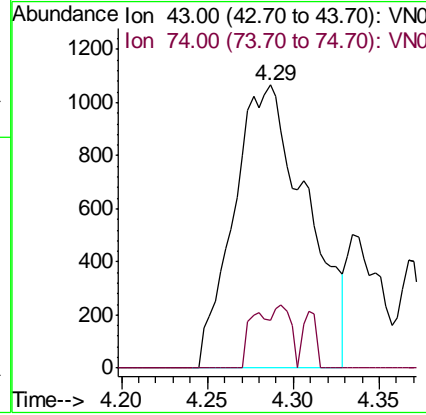
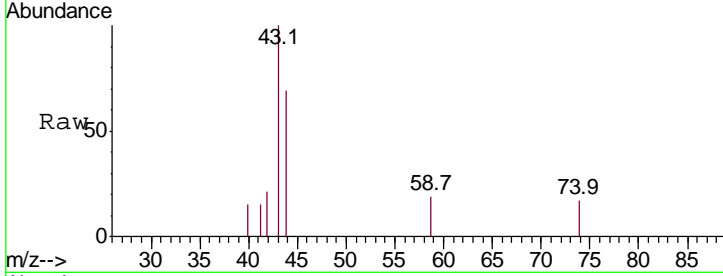




#18
 Methyl Acetate
 Concen: 1.067 ug/l
 RT: 4.29 min Scan# 792
 Delta R.T. 0.01 min
 Lab File: VN063870.D
 Acq: 5 Oct 2020 14:57

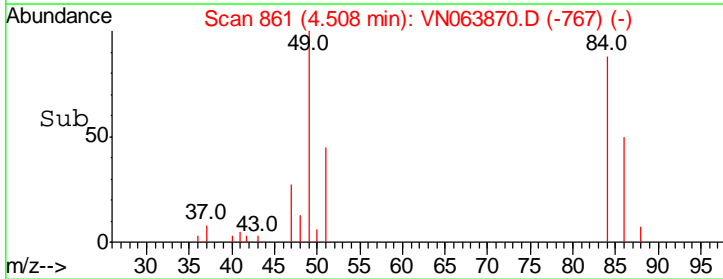
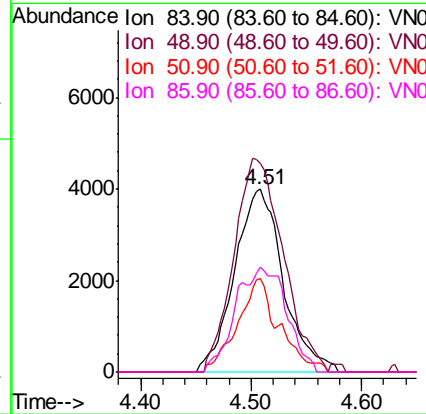
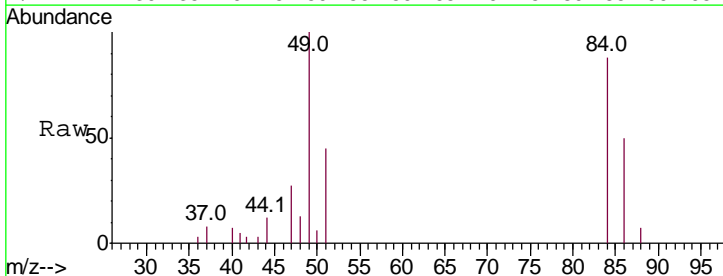
Instrument : MSVOA_N
 ClientSampleId : PB132063ZHE#02

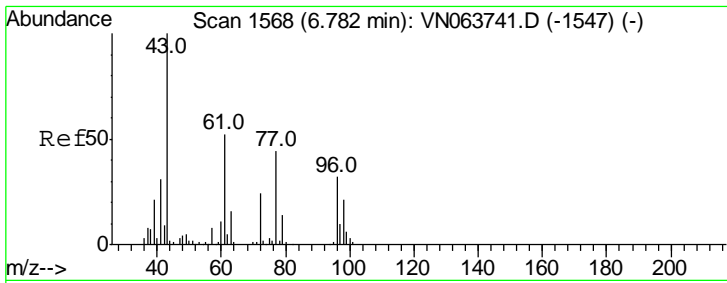
Tgt Ion	Resp	Lower	Upper
43	100		
74	5.1	17.4	26.2#



#20
 Methylene Chloride
 Concen: 4.793 ug/l
 RT: 4.51 min Scan# 861
 Delta R.T. 0.00 min
 Lab File: VN063870.D
 Acq: 5 Oct 2020 14:57

Tgt Ion	Resp	Lower	Upper
84	100		
49	114.0	110.4	165.6
51	51.5	33.3	49.9#
86	57.2	50.7	76.1

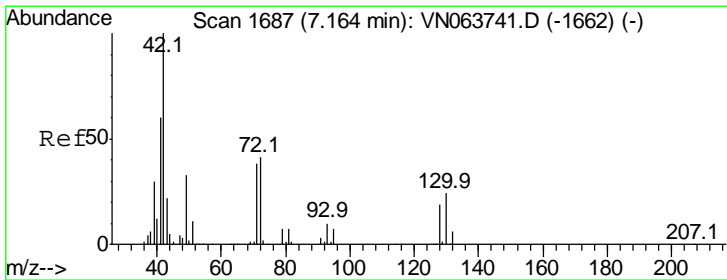
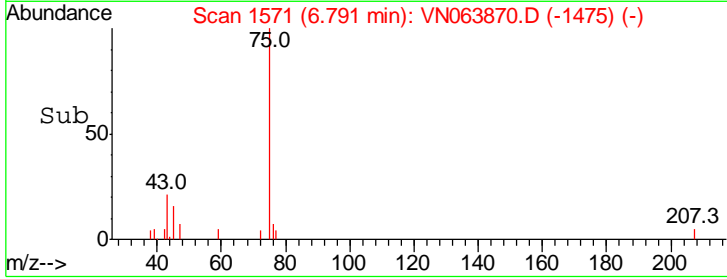
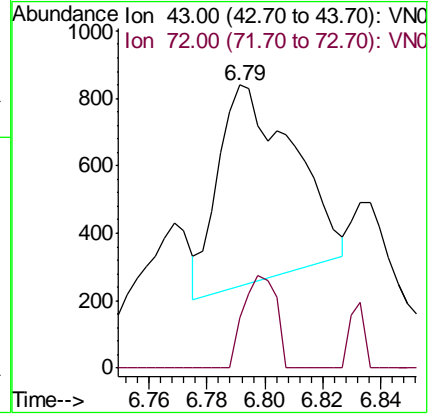
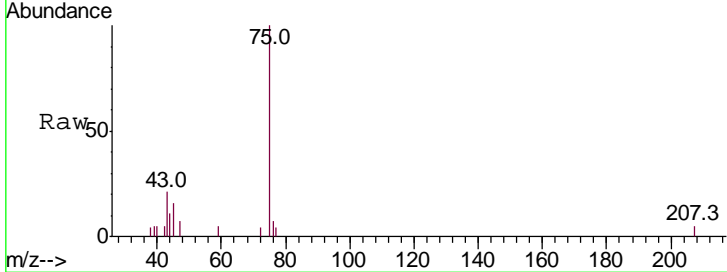




#25
 2-Butanone
 Concen: 0.660 ug/l
 RT: 6.79 min Scan# 1571
 Delta R.T. 0.01 min
 Lab File: VN063870.D
 Acq: 5 Oct 2020 14:57

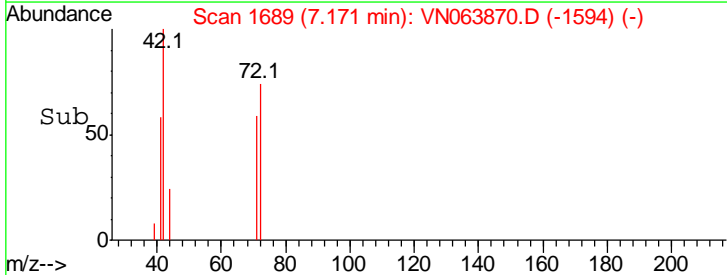
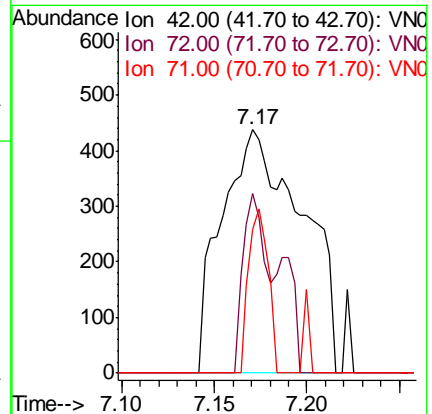
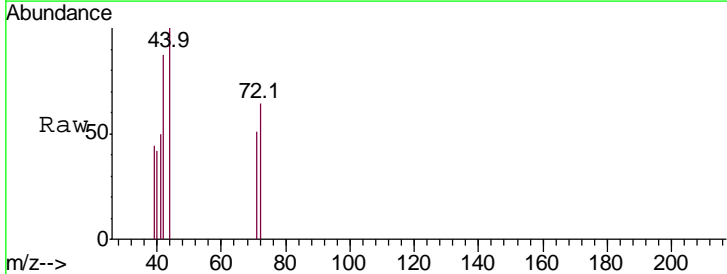
Instrument : MSVOA_N
 ClientSampled : PB132063ZHE#02

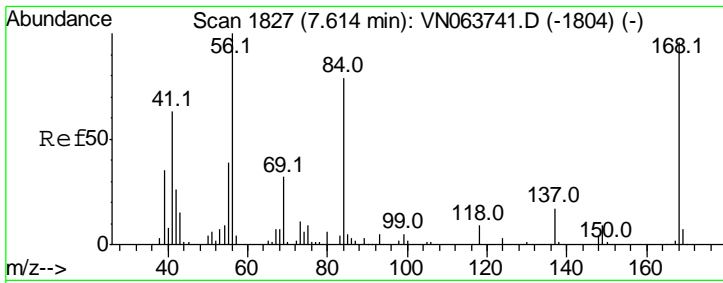
Tgt Ion	Resp	Lower	Upper
43	1064		
72	29.6	19.3	28.9#



#29
 Tetrahydrofuran
 Concen: 1.224 ug/l
 RT: 7.17 min Scan# 1689
 Delta R.T. 0.01 min
 Lab File: VN063870.D
 Acq: 5 Oct 2020 14:57

Tgt Ion	Resp	Lower	Upper
42	1324		
72	20.5	32.8	49.2#
71	16.4	30.6	45.8#

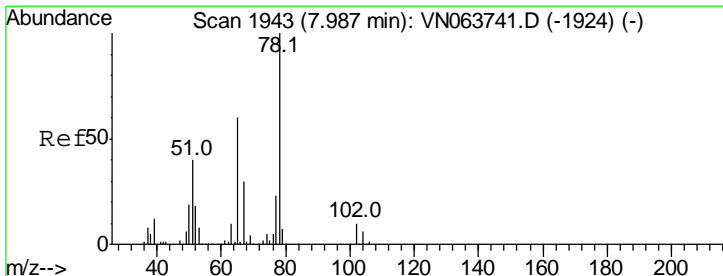
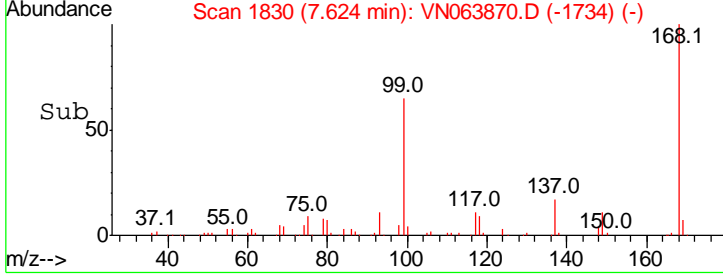
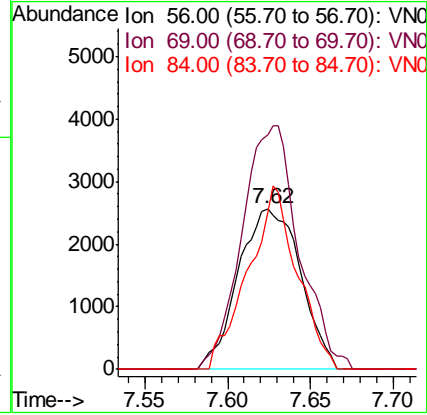
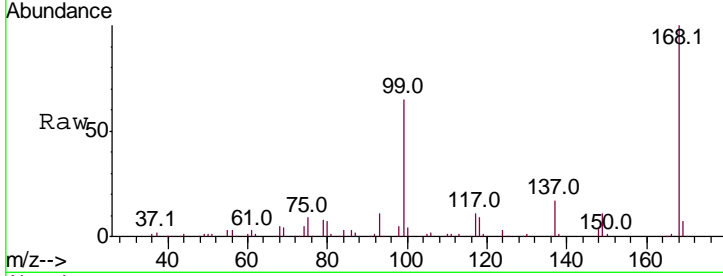




#31
 Cyclohexane
 Concen: 1.560 ug/l
 RT: 7.62 min Scan# 1830
 Delta R.T. 0.01 min
 Lab File: VN063870.D
 Acq: 5 Oct 2020 14:57

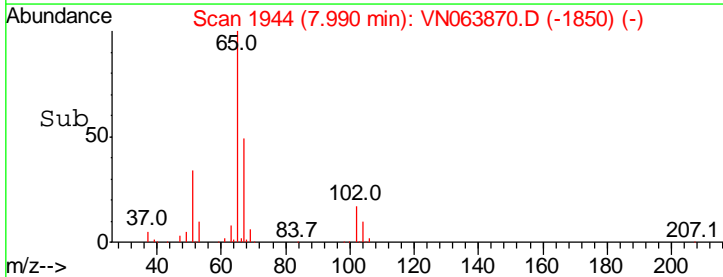
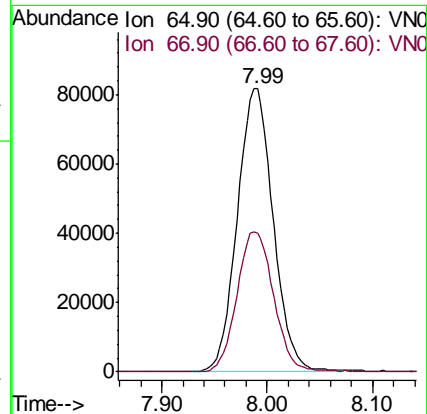
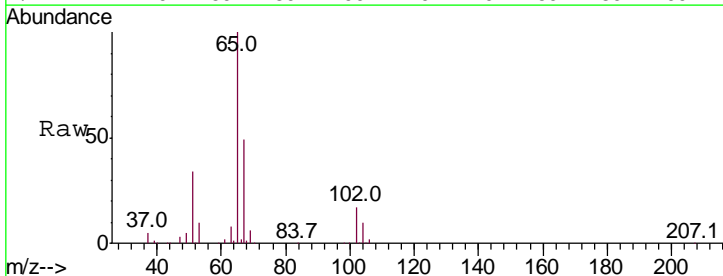
Instrument : MSVOA_N
 ClientSampleID : PB132063ZHE#02

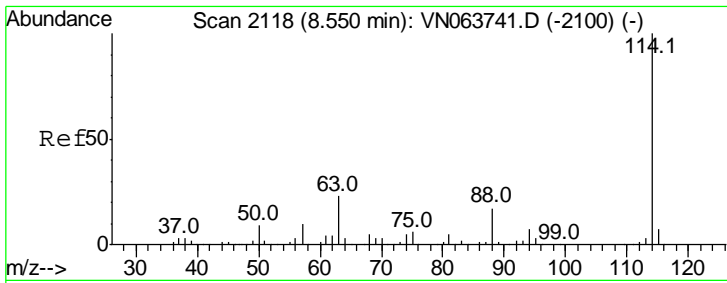
Tgt Ion	Resp	Lower	Upper
56	100		
69	145.9	25.4	38.2#
84	98.1	63.3	94.9#



#33
 1,2-Dichloroethane-d4
 Concen: 52.221 ug/l
 RT: 7.99 min Scan# 1944
 Delta R.T. 0.00 min
 Lab File: VN063870.D
 Acq: 5 Oct 2020 14:57

Tgt Ion	Resp	Lower	Upper
65	100		
67	50.7	0.0	99.6

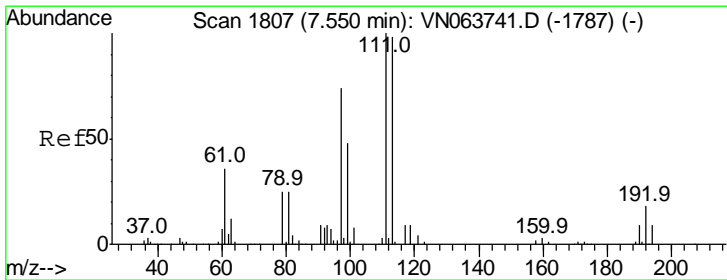
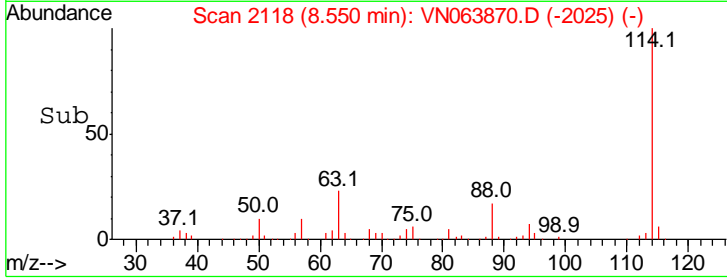
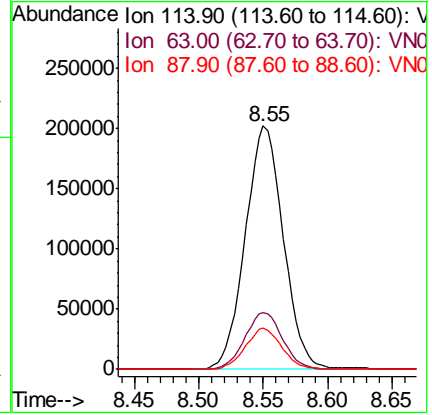
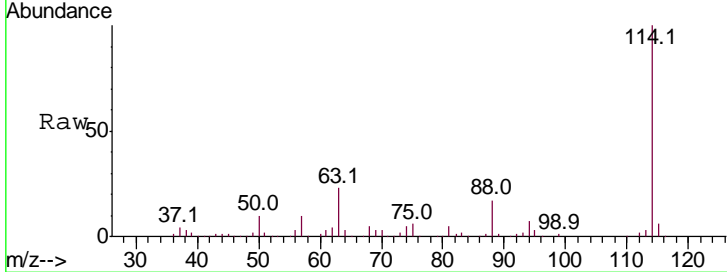




#34
 1,4-Difluorobenzene
 Concen: 50.000 ug/l
 RT: 8.55 min Scan# 2118
 Delta R.T. 0.00 min
 Lab File: VN063870.D
 Acq: 5 Oct 2020 14:57

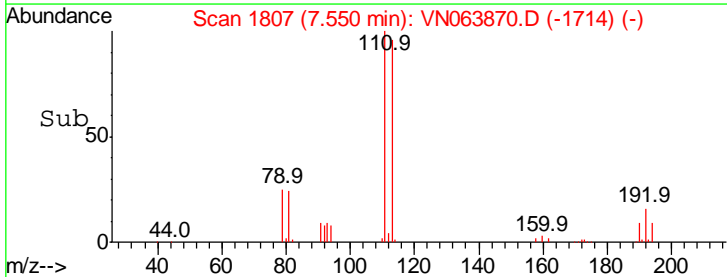
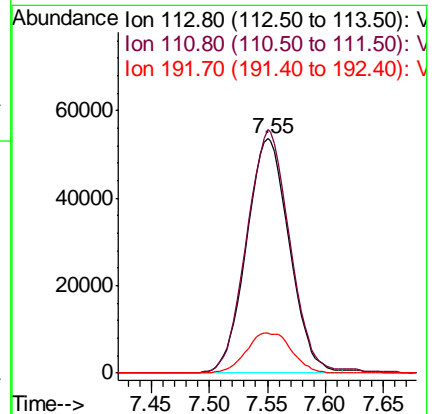
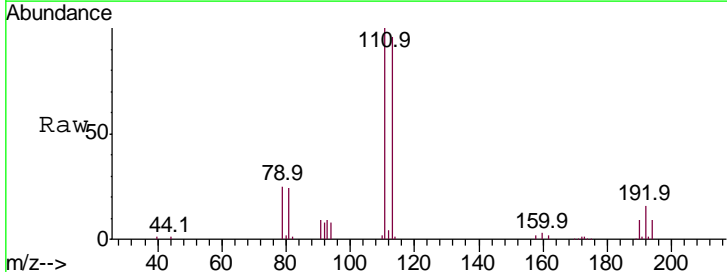
Instrument : MSVOA_N
 ClientSampled : PB132063ZHE#02

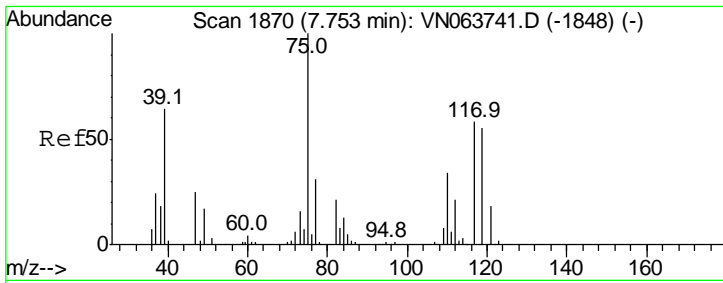
Tgt Ion	Resp	Lower	Upper
114	100		
63	23.4	0.0	45.0
88	16.8	0.0	34.0



#35
 Dibromofluoromethane
 Concen: 48.001 ug/l
 RT: 7.55 min Scan# 1807
 Delta R.T. 0.00 min
 Lab File: VN063870.D
 Acq: 5 Oct 2020 14:57

Tgt Ion	Resp	Lower	Upper
113	100		
111	104.5	81.8	122.8
192	18.2	14.2	21.2

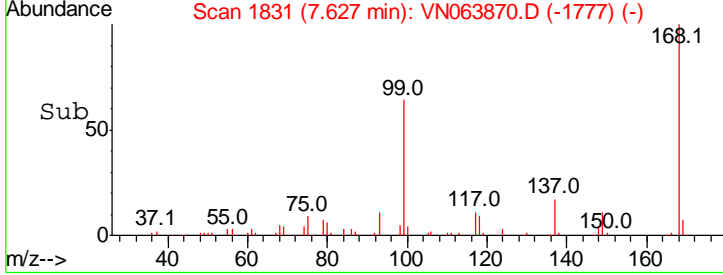
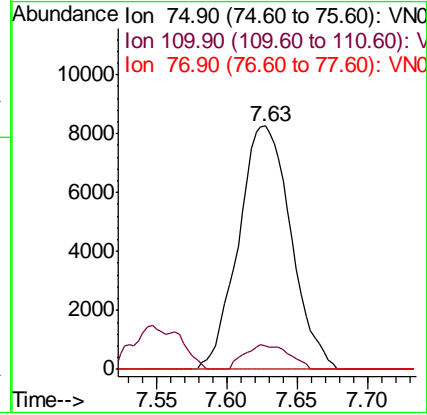
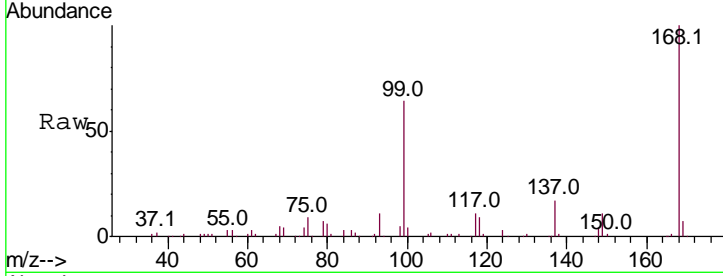




#36
 1,1-Dichloropropene
 Concen: 5.081 ug/l
 RT: 7.63 min Scan# 1831
 Delta R.T. -0.13 min
 Lab File: VN063870.D
 Acq: 5 Oct 2020 14:57

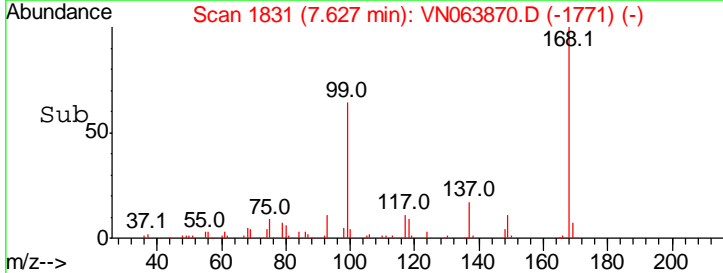
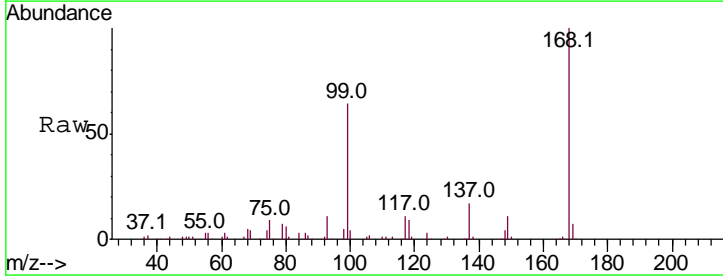
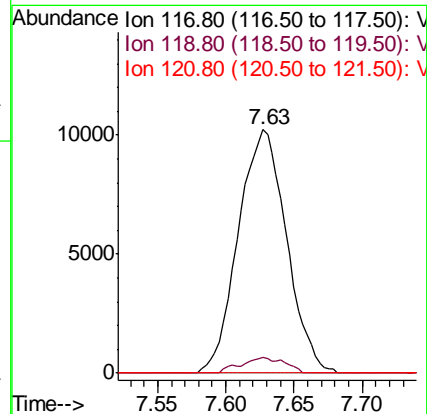
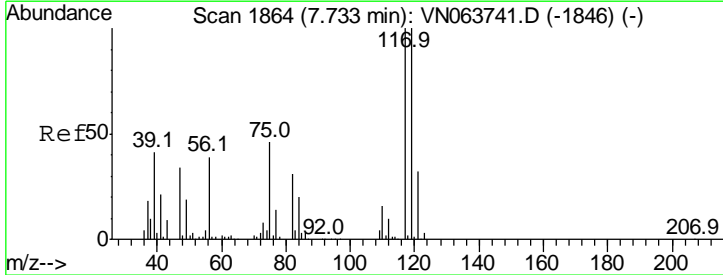
Instrument : MSVOA_N
 ClientSampled : PB132063ZHE#02

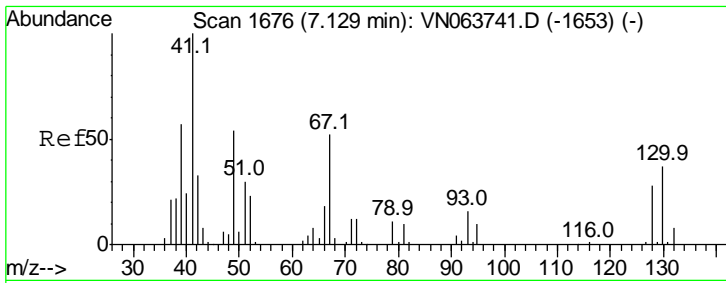
Tgt Ion	Resp	Lower	Upper
75	100		
110	8.5	16.9	50.6#
77	0.0	24.5	36.7#



#38
 Carbon Tetrachloride
 Concen: 5.310 ug/l
 RT: 7.63 min Scan# 1831
 Delta R.T. -0.11 min
 Lab File: VN063870.D
 Acq: 5 Oct 2020 14:57

Tgt Ion	Resp	Lower	Upper
117	100		
119	6.6	80.1	120.1#
121	0.0	25.7	38.5#

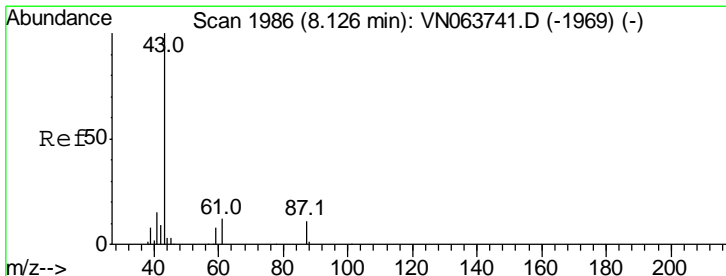
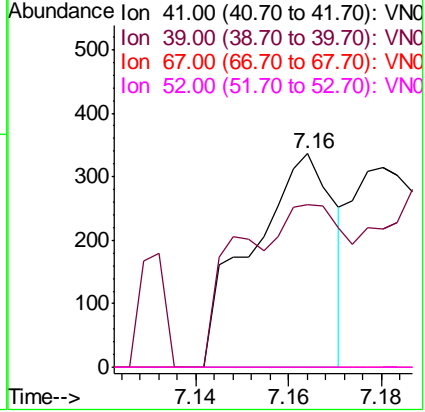
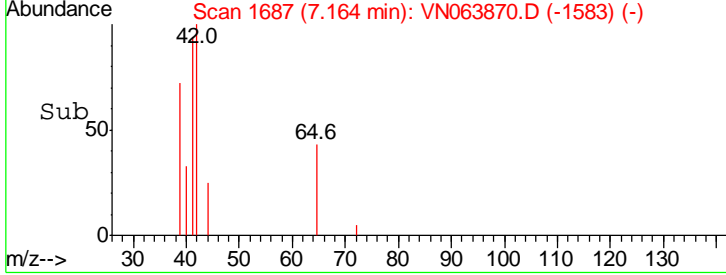
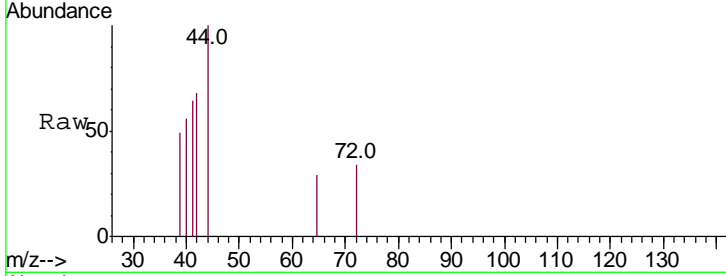




#41
 Methacrylonitrile
 Concen: 0.223 ug/l
 RT: 7.16 min Scan# 1687
 Delta R.T. 0.04 min
 Lab File: VN063870.D
 Acq: 5 Oct 2020 14:57

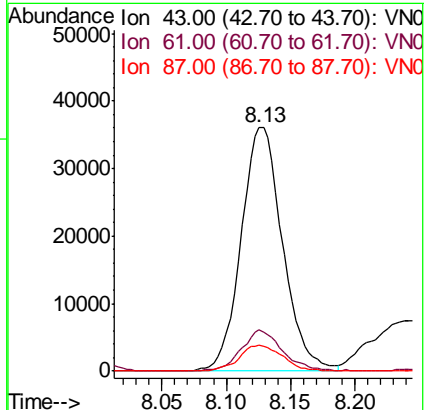
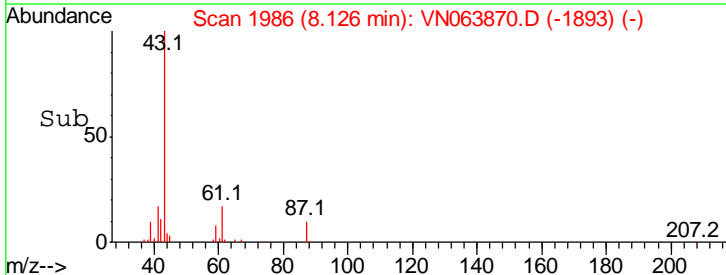
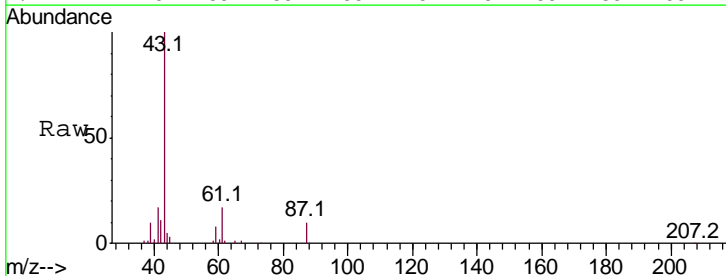
Instrument : MSVOA_N
 ClientSampleId : PB132063ZHE#02

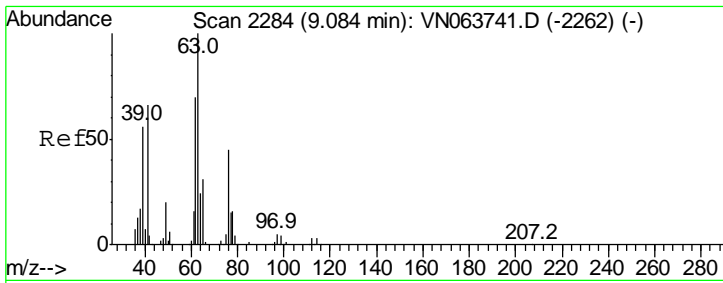
Tgt Ion	Resp	Lower	Upper
41	100		
39	99.8	42.5	63.7#
67	0.0	57.4	86.2#
52	0.0	26.9	40.3#



#43
 Isopropyl Acetate
 Concen: 11.701 ug/l
 RT: 8.13 min Scan# 1986
 Delta R.T. 0.00 min
 Lab File: VN063870.D
 Acq: 5 Oct 2020 14:57

Tgt Ion	Resp	Lower	Upper
43	100		
61	16.8	14.2	21.4
87	11.0	9.0	13.6

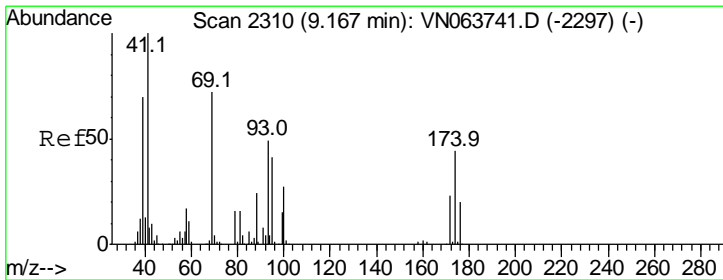
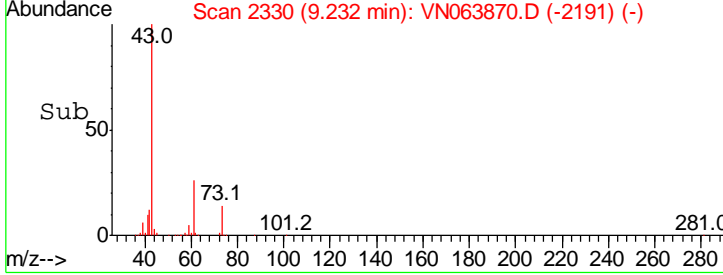
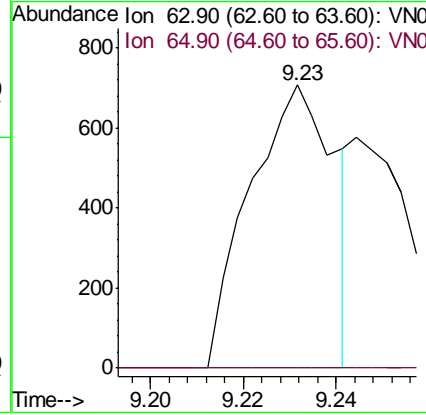
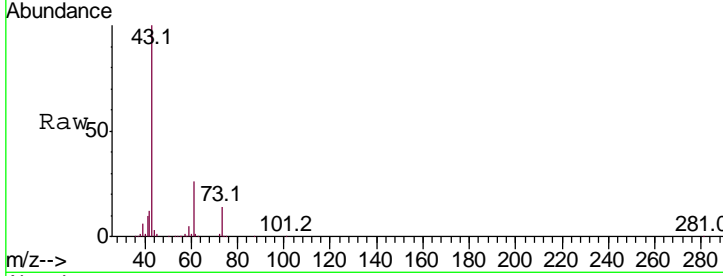




#45
 1,2-Dichloropropane
 Concen: 0.276 ug/l
 RT: 9.23 min Scan# 2330
 Delta R.T. 0.15 min
 Lab File: VN063870.D
 Acq: 5 Oct 2020 14:57

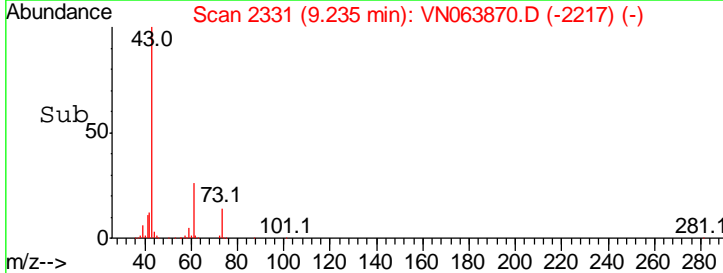
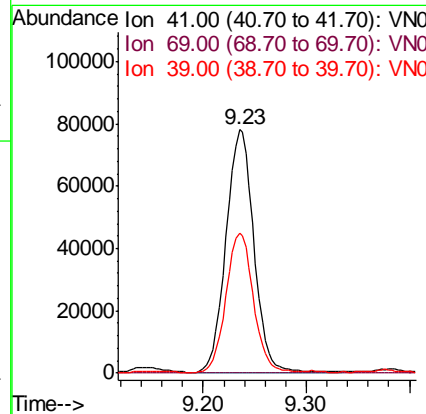
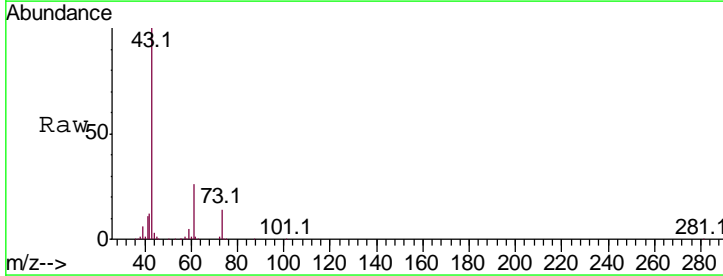
Instrument : MSVOA_N
 ClientSampleId : PB132063ZHE#02

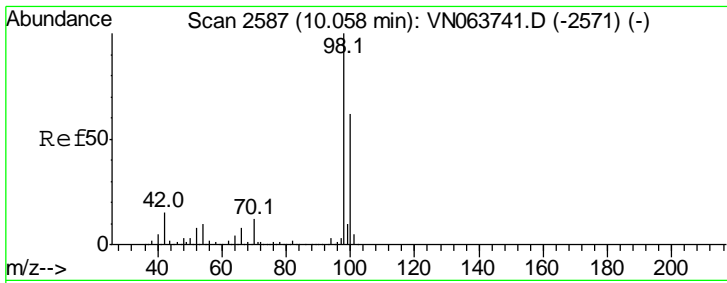
Tgt Ion	Ratio	Lower	Upper
63	100		
65	0.0	24.7	37.1#



#48
 Methyl methacrylate
 Concen: 43.035 ug/l
 RT: 9.23 min Scan# 2331
 Delta R.T. 0.07 min
 Lab File: VN063870.D
 Acq: 5 Oct 2020 14:57

Tgt Ion	Ratio	Lower	Upper
41	100		
69	0.0	60.9	91.3#
39	56.6	57.5	86.3#

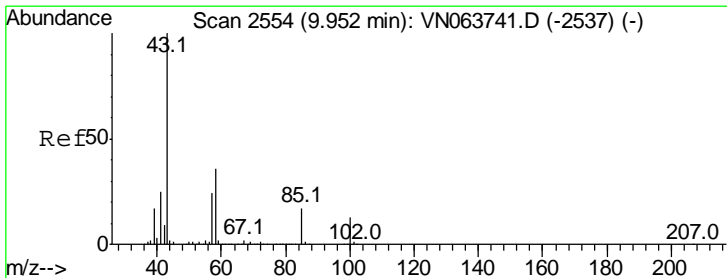
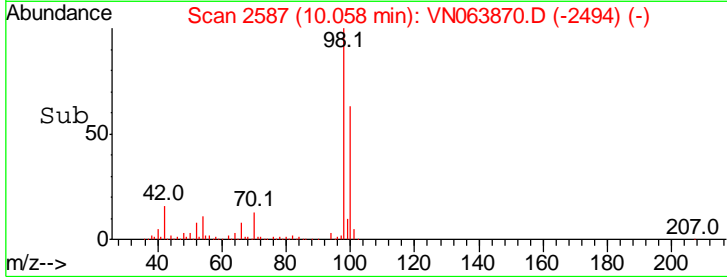
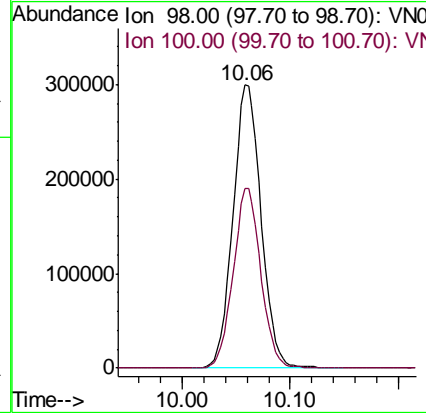
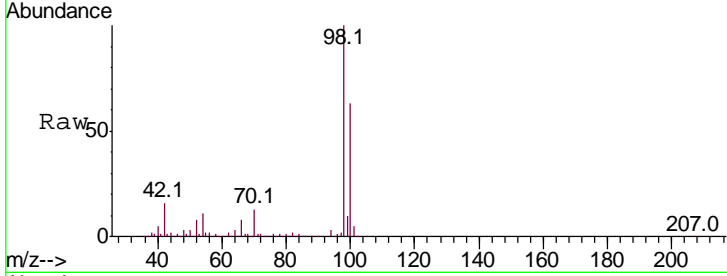




#50
 Toluene-d8
 Concen: 49.725 ug/l
 RT: 10.06 min Scan# 2587
 Delta R.T. 0.00 min
 Lab File: VN063870.D
 Acq: 5 Oct 2020 14:57

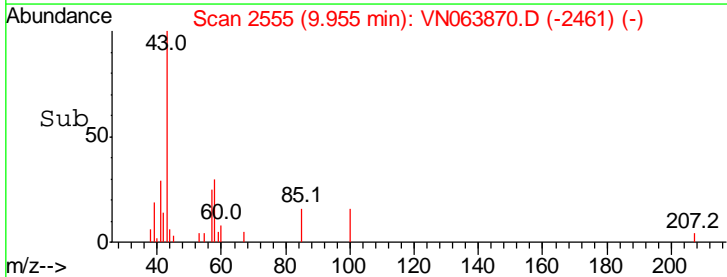
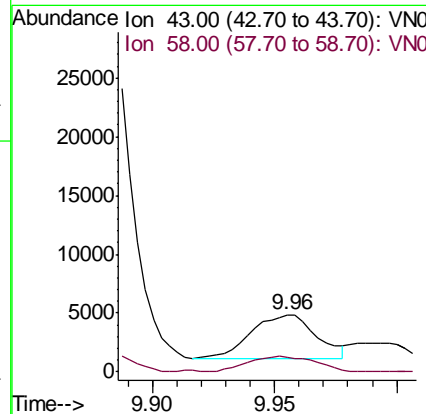
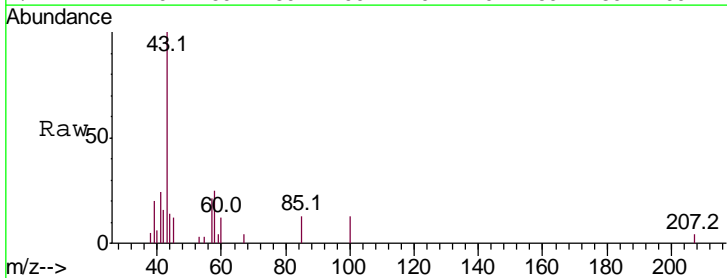
Instrument : MSVOA_N
 ClientSampled : PB132063ZHE#02

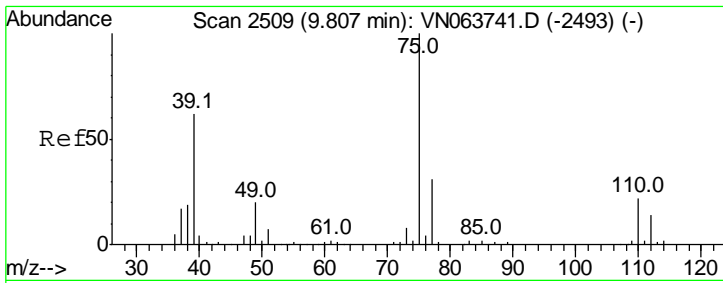
Tgt Ion	Resp	Lower	Upper
98	100		
100	62.6	49.8	74.6



#51
 4-Methyl-2-Pentanone
 Concen: 1.753 ug/l
 RT: 9.96 min Scan# 2555
 Delta R.T. 0.00 min
 Lab File: VN063870.D
 Acq: 5 Oct 2020 14:57

Tgt Ion	Resp	Lower	Upper
43	100		
58	35.9	28.4	42.6

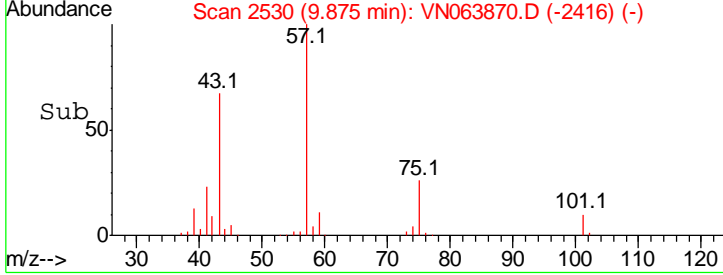
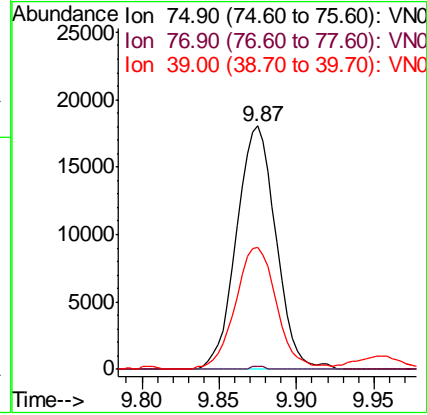
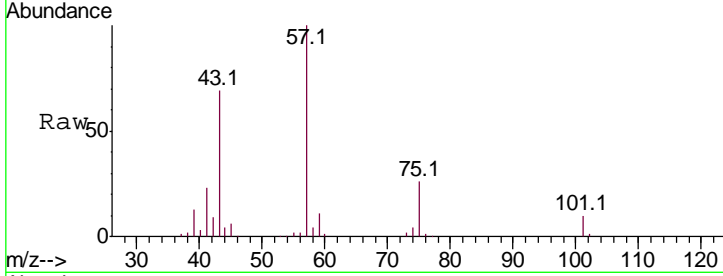




#54
 cis-1,3-Dichloropropene
 Concen: 6.155 ug/l
 RT: 9.87 min Scan# 2530
 Delta R.T. 0.07 min
 Lab File: VN063870.D
 Acq: 5 Oct 2020 14:57

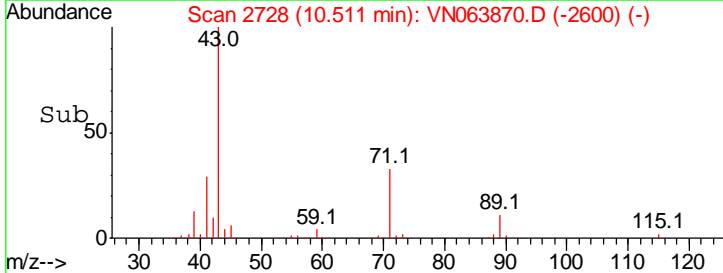
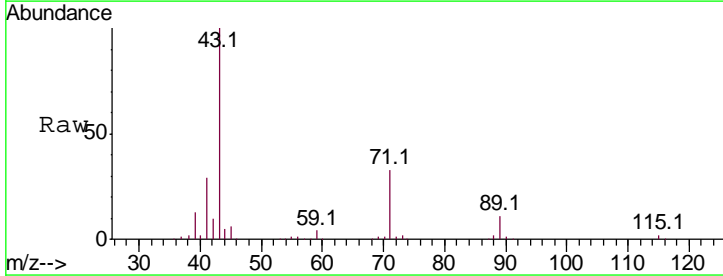
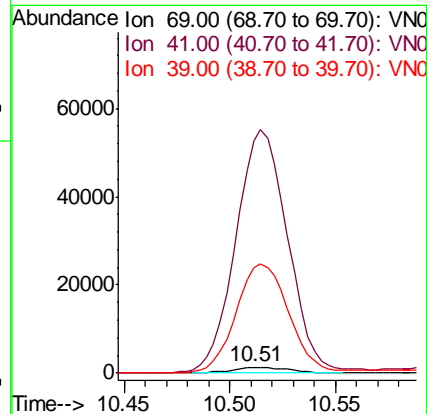
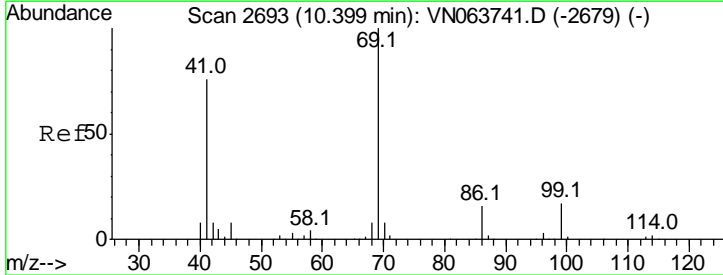
Instrument : MSVOA_N
 ClientSampled : PB132063ZHE#02

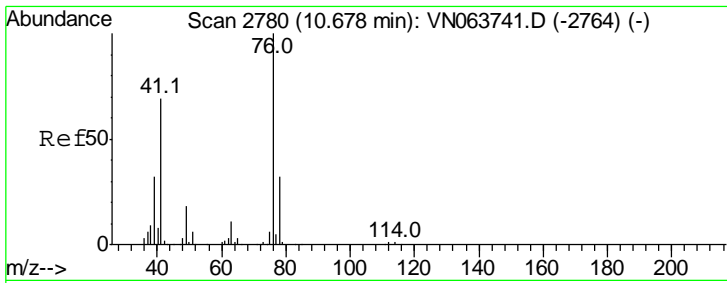
Tgt Ion	Resp	Lower	Upper
75	100		
77	1.4	24.6	36.8#
39	49.9	49.7	74.5



#56
 Ethyl methacrylate
 Concen: 0.588 ug/l
 RT: 10.51 min Scan# 2728
 Delta R.T. 0.11 min
 Lab File: VN063870.D
 Acq: 5 Oct 2020 14:57

Tgt Ion	Resp	Lower	Upper
69	100		
41	3824.3	61.1	91.7#
39	1757.5	42.2	63.4#

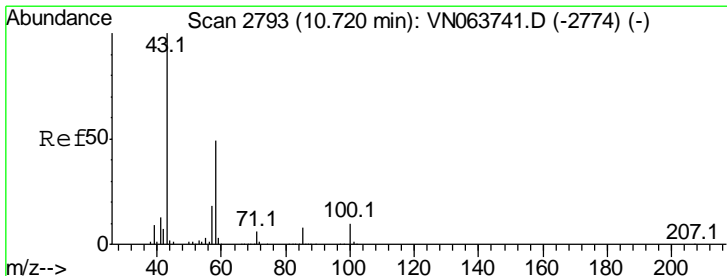
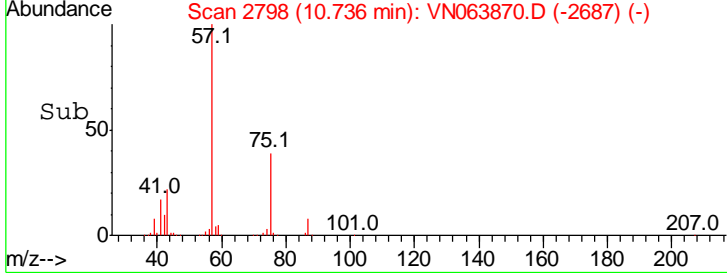
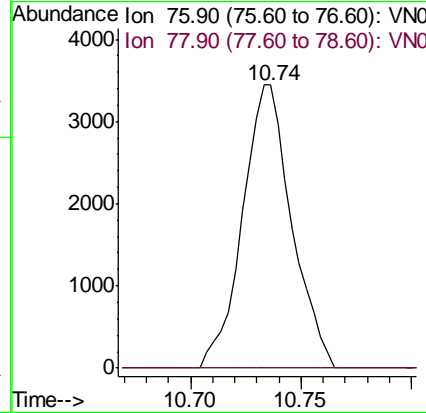
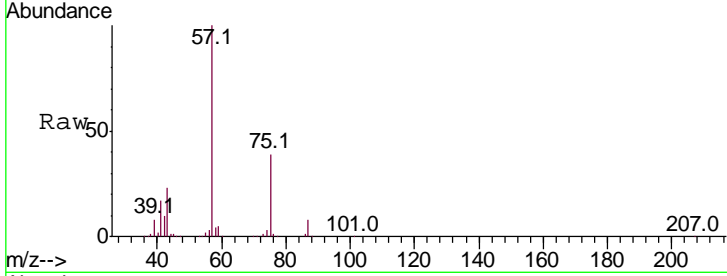




#57
 1,3-Dichloropropane
 Concen: 1.057 ug/l
 RT: 10.74 min Scan# 2798
 Delta R.T. 0.06 min
 Lab File: VN063870.D
 Acq: 5 Oct 2020 14:57

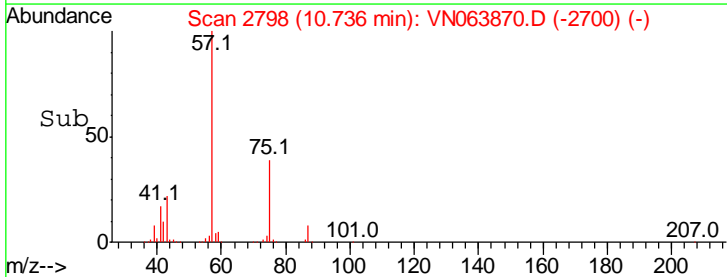
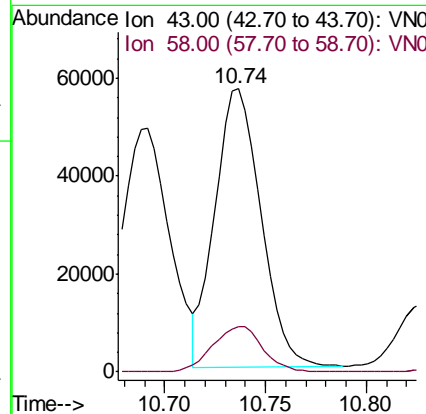
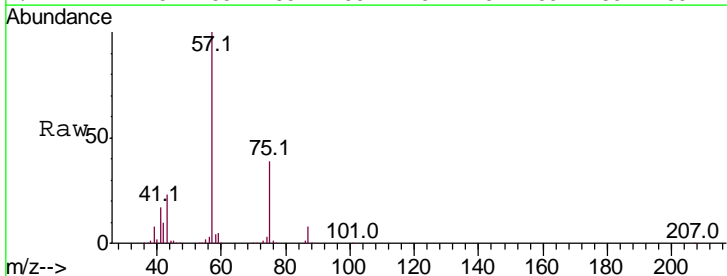
Instrument : MSVOA_N
 ClientSampled : PB132063ZHE#02

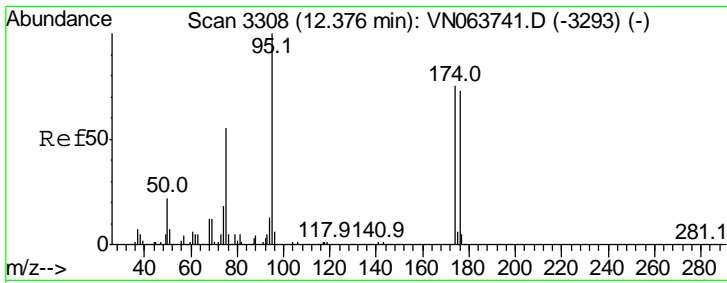
Tgt Ion: 76 Resp: 5337
 Ion Ratio Lower Upper
 76 100
 78 0.0 25.2 37.8#



#59
 2-Hexanone
 Concen: 30.155 ug/l
 RT: 10.74 min Scan# 2798
 Delta R.T. 0.02 min
 Lab File: VN063870.D
 Acq: 5 Oct 2020 14:57

Tgt Ion: 43 Resp: 90741
 Ion Ratio Lower Upper
 43 100
 58 17.6 24.6 73.8#

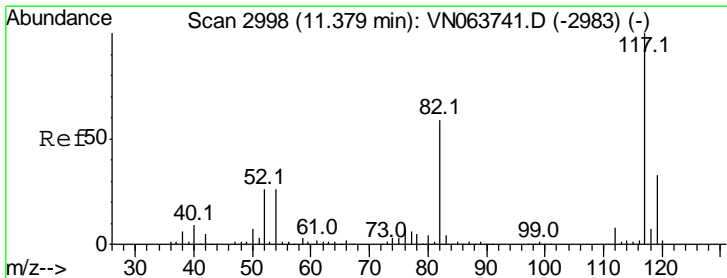
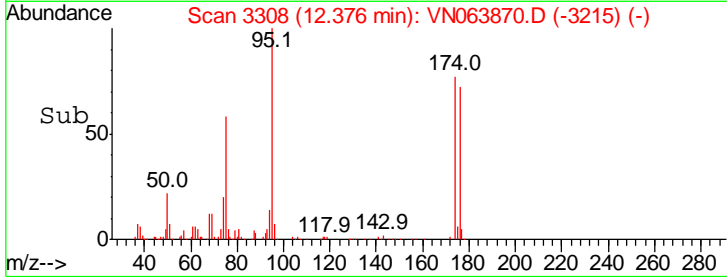
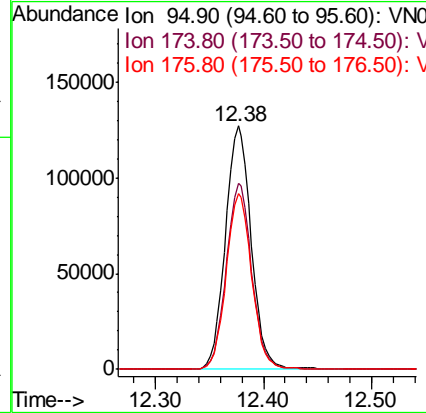
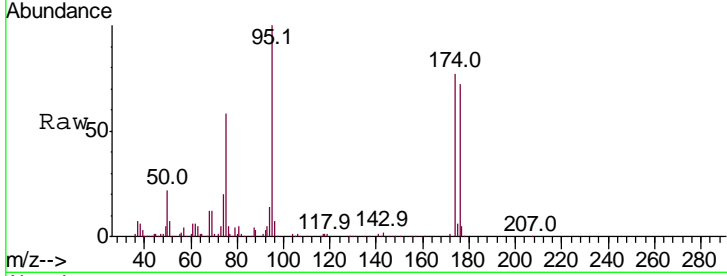




#62
 4-Bromofluorobenzene
 Concen: 51.393 ug/l
 RT: 12.38 min Scan# 3308
 Delta R.T. 0.00 min
 Lab File: VN063870.D
 Acq: 5 Oct 2020 14:57

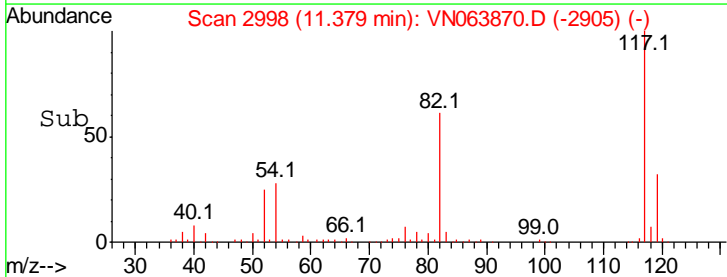
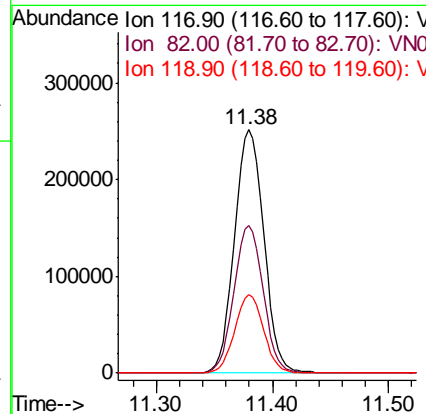
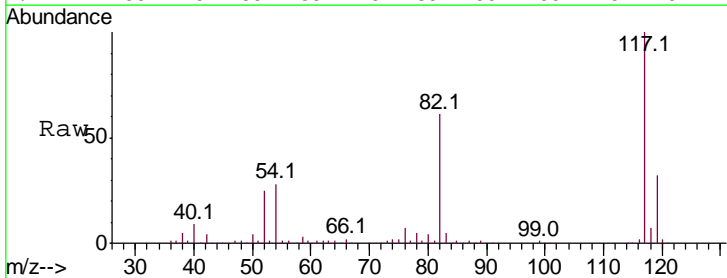
Instrument : MSVOA_N
 ClientSampled : PB132063ZHE#02

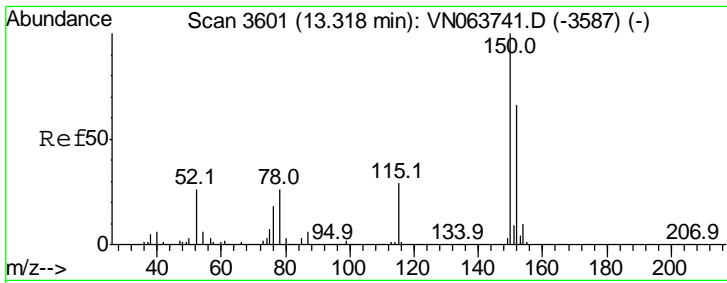
Tgt Ion	Resp	Lower	Upper
95	100		
174	75.7	0.0	150.6
176	71.5	0.0	145.4



#63
 Chlorobenzene-d5
 Concen: 50.000 ug/l
 RT: 11.38 min Scan# 2998
 Delta R.T. 0.00 min
 Lab File: VN063870.D
 Acq: 5 Oct 2020 14:57

Tgt Ion	Resp	Lower	Upper
117	100		
82	60.7	47.4	71.2
119	32.4	26.4	39.6

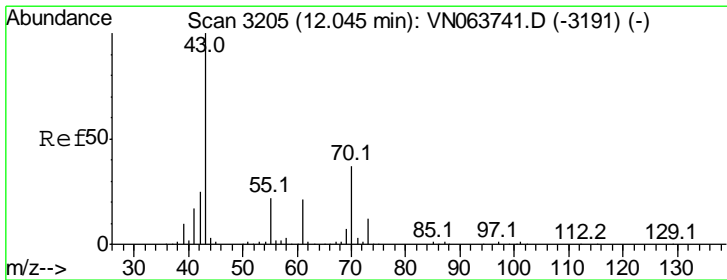
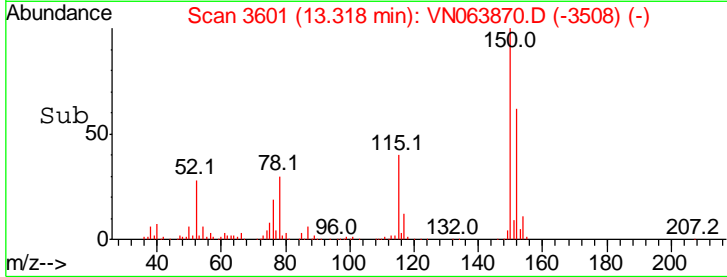
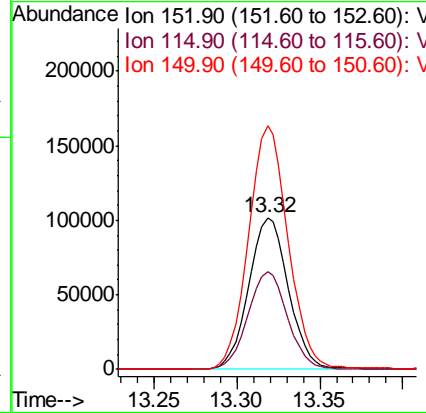
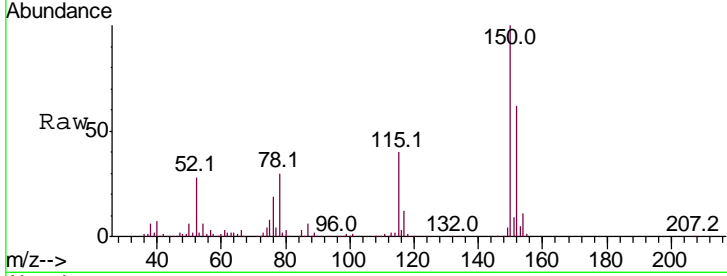




#72
 1,4-Dichlorobenzene-d4
 Concen: 50.000 ug/l
 RT: 13.32 min Scan# 3601
 Delta R.T. 0.00 min
 Lab File: VN063870.D
 Acq: 5 Oct 2020 14:57

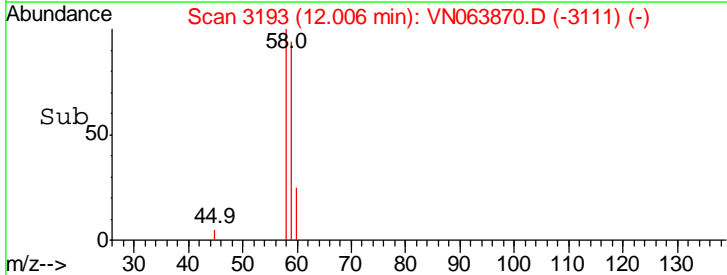
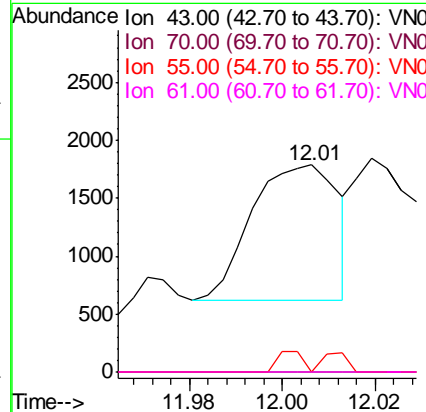
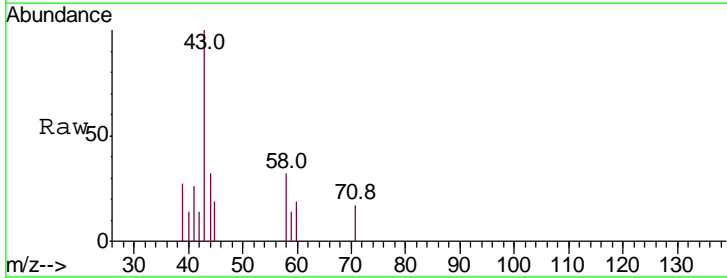
Instrument : MSVOA_N
 ClientSampleId : PB132063ZHE#02

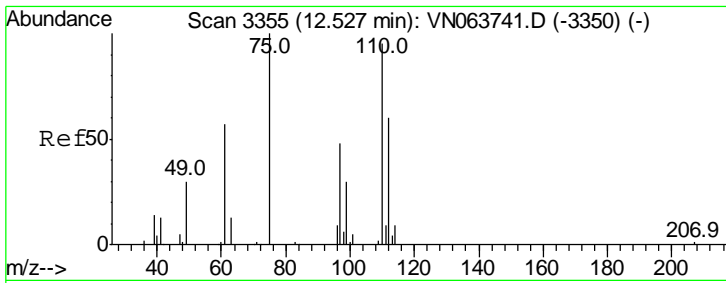
Tgt Ion	Resp	Lower	Upper
152	100		
115	64.4	31.3	93.8
150	161.1	0.0	341.8



#74
 N-amyl acetate
 Concen: 2.469 ug/l
 RT: 12.01 min Scan# 3193
 Delta R.T. -0.04 min
 Lab File: VN063870.D
 Acq: 5 Oct 2020 14:57

Tgt Ion	Resp	Lower	Upper
43	100		
70	0.0	29.8	44.8#
55	4.5	17.9	26.9#
61	0.0	17.0	25.4#

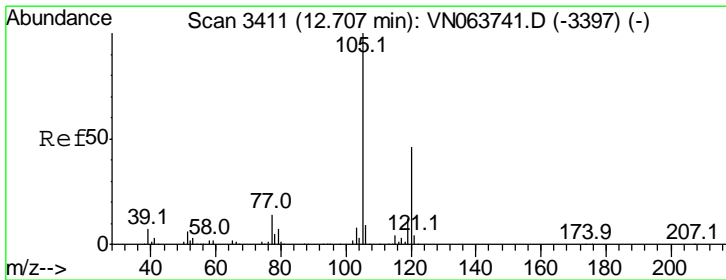
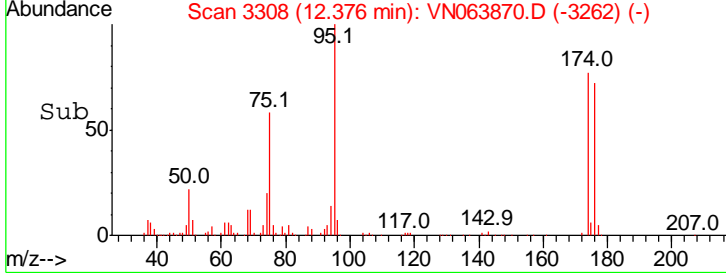
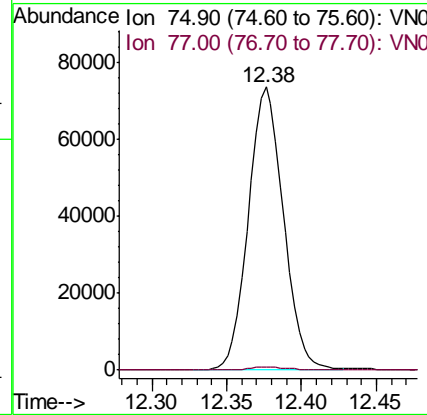
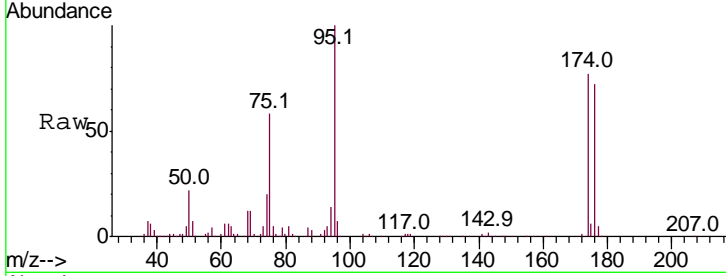




#76
 1,2,3-Trichloropropane
 Concen: 32.271 ug/l
 RT: 12.38 min Scan# 3308
 Delta R.T. -0.15 min
 Lab File: VN063870.D
 Acq: 5 Oct 2020 14:57

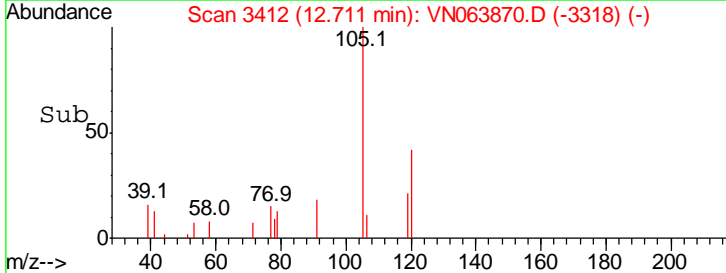
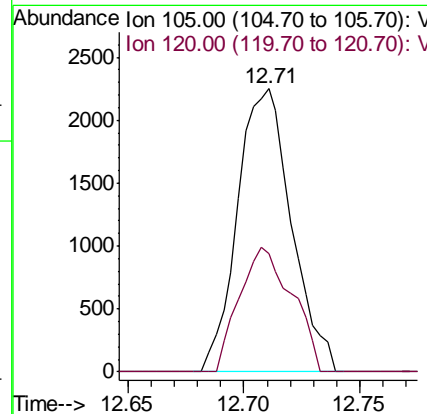
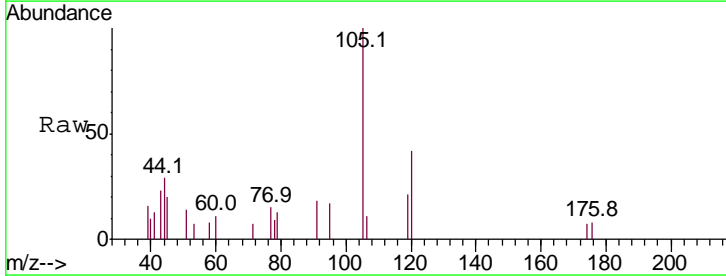
Instrument : MSVOA_N
 ClientSampled : PB132063ZHE#02

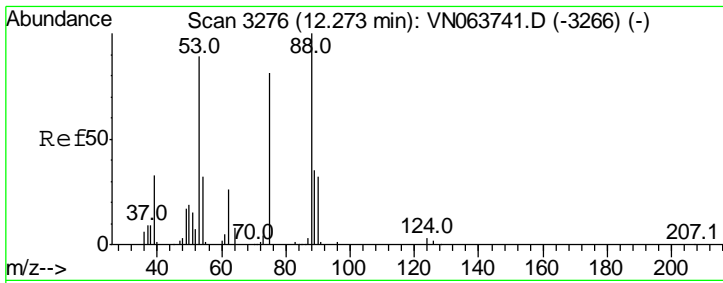
Tgt Ion	Resp	Lower	Upper
75	100		
77	1.2	0.0	0.0#



#80
 1,3,5-Trimethylbenzene
 Concen: 0.352 ug/l
 RT: 12.71 min Scan# 3412
 Delta R.T. 0.00 min
 Lab File: VN063870.D
 Acq: 5 Oct 2020 14:57

Tgt Ion	Resp	Lower	Upper
105	100		
120	43.2	23.3	69.9



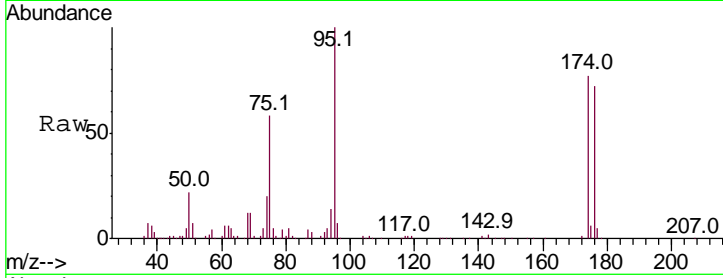


#81
 trans-1,4-Dichloro-2-butene
 Concen: 92.945 ug/l
 RT: 12.38 min Scan# 3308
 Delta R.T. 0.10 min
 Lab File: VN063870.D
 Acq: 5 Oct 2020 14:57

Instrument :
 MSVOA_N
 ClientSampleId :
 PB132063ZHE#02

Tot Ion: 75 Resp: 120182

Ion	Ratio	Lower	Upper
75	100		
53	0.0	88.2	132.2#
89	0.0	36.0	54.0#



Abundance

Ion 74.90 (74.60 to 75.60): VNO

Ion 53.00 (52.70 to 53.70): VNO

Ion 88.90 (88.60 to 89.60): VNO

