

Data Path : Z:\voasrv\HPCHEM1\MSVOA_N\Data\VN100622\
 Data File : VN074779.D
 Acq On : 06 Oct 2022 13:27
 Operator : JC\MD
 Sample : N4983-03DL 10X
 Misc : 5.0mL/MSVOA_N/WATER
 ALS Vial : 11 Sample Multiplier: 1

Instrument :
 MSVOA_N
 ClientSampleId :
 BP-VPB-RW5-GW-763-765DL

Quant Time: Oct 06 16:30:11 2022
 Quant Method : Z:\voasrv\HPCHEM1\MSVOA_N\methods\82N100522W.M
 Quant Title : SW846 8260
 QLast Update : Thu Oct 06 05:37:50 2022
 Response via : Initial Calibration

Compound	R.T.	QIon	Response	Conc	Units	Dev(Min)

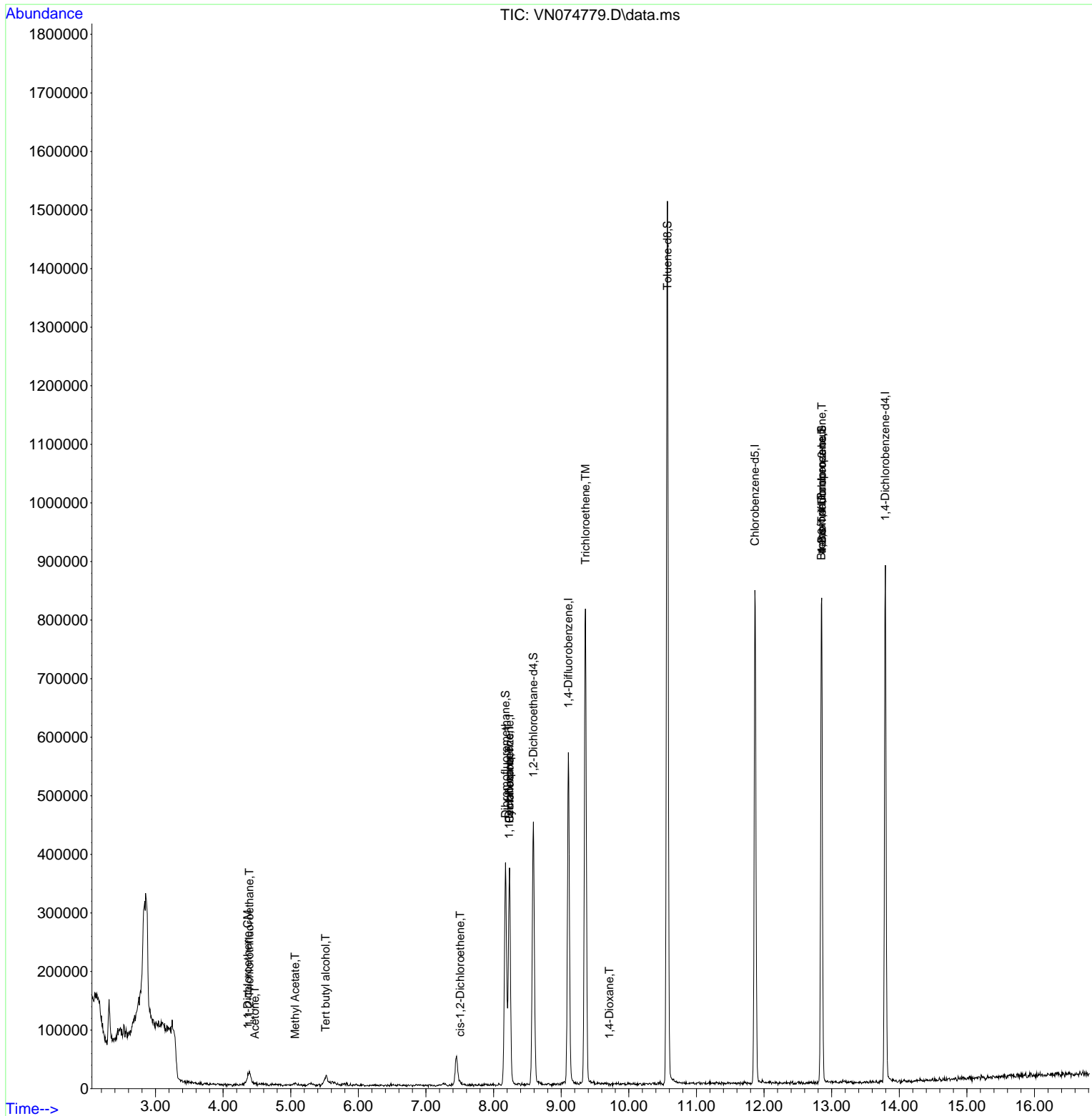
Internal Standards						
1) Pentafluorobenzene	8.236	168	252354	50.000	ug/l	0.00
34) 1,4-Difluorobenzene	9.106	114	469876	50.000	ug/l	0.00
63) Chlorobenzene-d5	11.865	117	465916	50.000	ug/l	0.00
72) 1,4-Dichlorobenzene-d4	13.794	152	221886	50.000	ug/l	0.00
System Monitoring Compounds						
33) 1,2-Dichloroethane-d4	8.588	65	320348	53.576	ug/l	0.00
Spiked Amount	50.000	Range 74 - 125	Recovery	=	107.160%	
35) Dibromofluoromethane	8.177	113	259007	54.557	ug/l	0.00
Spiked Amount	50.000	Range 75 - 124	Recovery	=	109.120%	
50) Toluene-d8	10.571	98	1027732	50.452	ug/l	0.00
Spiked Amount	50.000	Range 86 - 113	Recovery	=	100.900%	
62) 4-Bromofluorobenzene	12.853	95	271246	43.803	ug/l	0.00
Spiked Amount	50.000	Range 83 - 123	Recovery	=	87.600%	
Target Compounds						
						Qvalue
9) 1,1,2-Trichlorotrifluo...	4.389	101	13138	2.855	ug/l #	71
11) Tert butyl alcohol	5.518	59	14747	7.364	ug/l #	78
12) 1,1-Dichloroethene	4.365	96	4432	0.905	ug/l #	80
13) Acrolein	4.212	56	161	Below Cal	#	1
16) Acetone	4.471	43	3499	1.033	ug/l	96
18) Methyl Acetate	5.065	43	7715	0.615	ug/l	91
20) Methylene Chloride	5.300	84	1295	Below Cal	#	36
27) cis-1,2-Dichloroethene	7.506	96	1753	0.281	ug/l	25
31) Cyclohexane	8.236	56	7065	0.684	ug/l #	45
36) 1,1-Dichloropropene	8.230	75	24803	3.228	ug/l #	50
44) Trichloroethene	9.359	130	276925	53.450	ug/l	97
49) 1,4-Dioxane	9.712	88	64	0.378	ug/l #	1
71) Bromoform	12.847	173	2341	0.589	ug/l #	1
75) 1,1,2,2-Tetrachloroethane	12.935	83	121	Below Cal	#	24
76) 1,2,3-Trichloropropane	12.853	75	151385	22.859	ug/l #	1
77) Bromobenzene	12.841	156	64	Below Cal	#	1
81) trans-1,4-Dichloro-2-b...	12.853	75	151385	44.537	ug/l #	14
96) 1,2,3-Trichlorobenzene	15.864	180	273	Below Cal	#	12

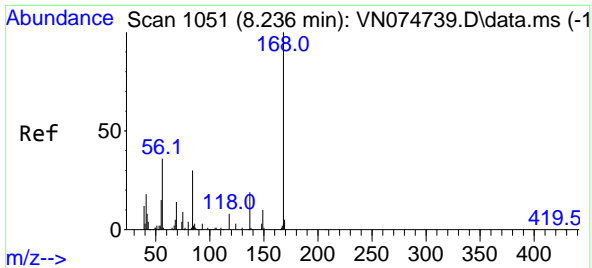
(#) = qualifier out of range (m) = manual integration (+) = signals summed

Data Path : Z:\voasrv\HPCHEM1\MSVOA_N\Data\VN100622\
 Data File : VN074779.D
 Acq On : 06 Oct 2022 13:27
 Operator : JC\MD
 Sample : N4983-03DL 10X
 Misc : 5.0mL/MSVOA_N/WATER
 ALS Vial : 11 Sample Multiplier: 1

Instrument :
 MSVOA_N
 ClientSampleId :
 BP-VPB-RW5-GW-763-765DL

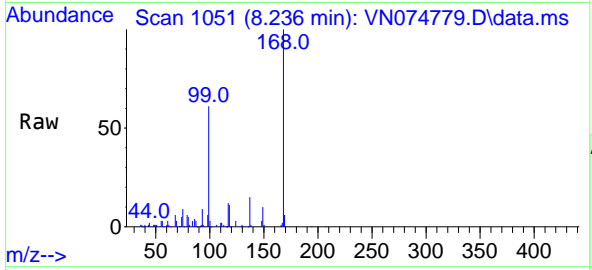
Quant Time: Oct 06 16:30:11 2022
 Quant Method : Z:\voasrv\HPCHEM1\MSVOA_N\methods\82N100522W.M
 Quant Title : SW846 8260
 QLast Update : Thu Oct 06 05:37:50 2022
 Response via : Initial Calibration



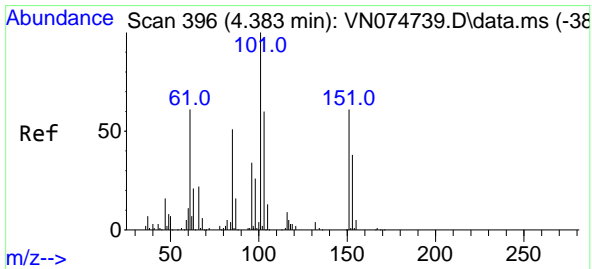
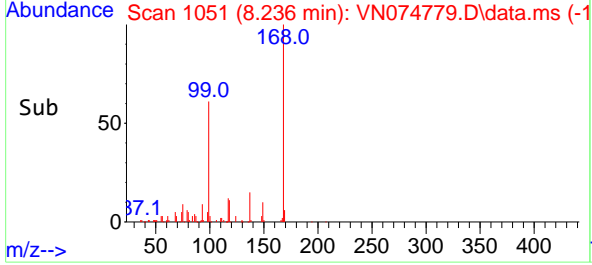
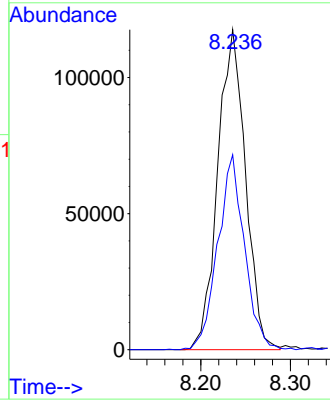


#1
 Pentafluorobenzene
 Concen: 50.000 ug/l
 RT: 8.236 min Scan# 1051
 Delta R.T. -0.000 min
 Lab File: VN074779.D
 Acq: 06 Oct 2022 13:27

Instrument : MSVOA_N
 ClientSampleId : BP-VPB-RW5-GW-763-765DL

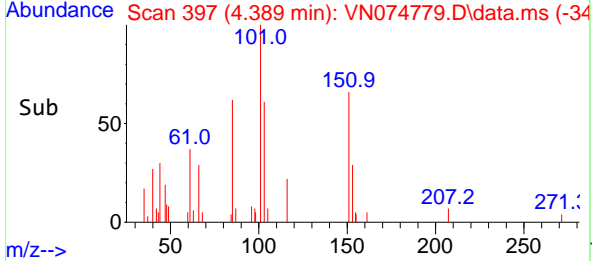
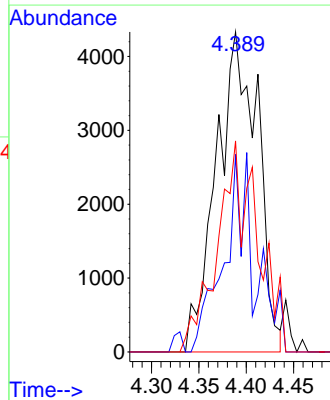
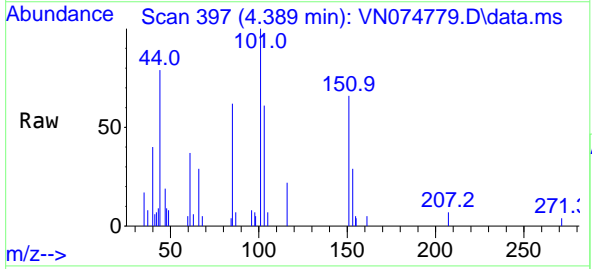


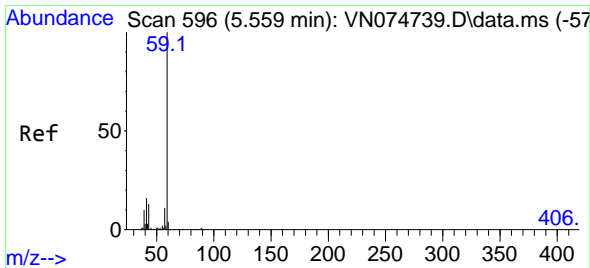
Tgt Ion:168 Resp: 252354
 Ion Ratio Lower Upper
 168 100
 99 60.9 42.8 64.2



#9
 1,1,2-Trichlorotrifluoroethane
 Concen: 2.855 ug/l
 RT: 4.389 min Scan# 397
 Delta R.T. 0.006 min
 Lab File: VN074779.D
 Acq: 06 Oct 2022 13:27

Tgt Ion:101 Resp: 13138
 Ion Ratio Lower Upper
 101 100
 85 37.2 37.4 56.0#
 151 37.2 55.0 82.4#

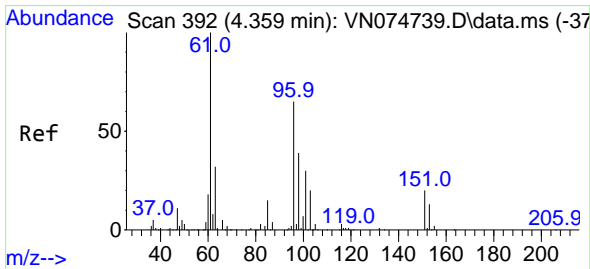
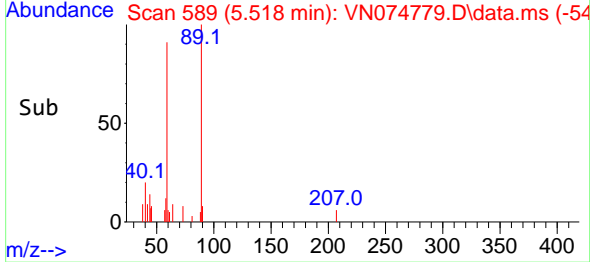
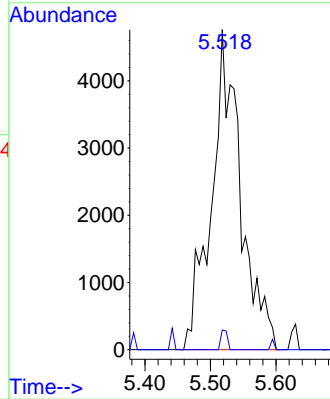
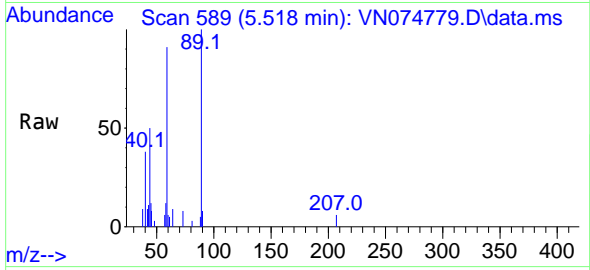




#11
 Tert butyl alcohol
 Concen: 7.364 ug/l
 RT: 5.518 min Scan# 51
 Delta R.T. -0.041 min
 Lab File: VN074779.D
 Acq: 06 Oct 2022 13:27

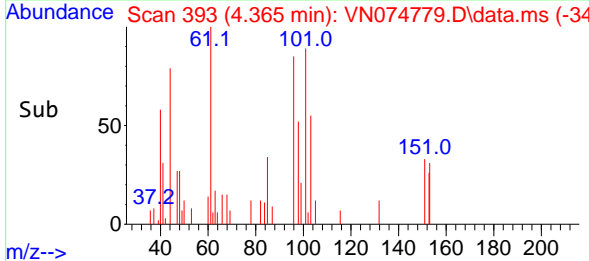
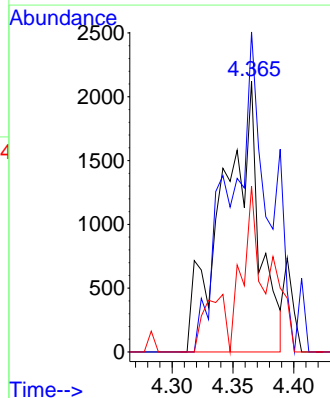
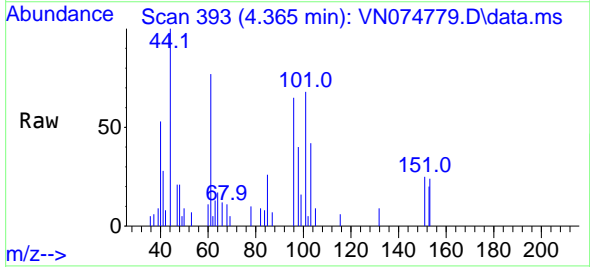
Instrument : MSVOA_N
 ClientSampleId : BP-VPB-RW5-GW-763-765DL

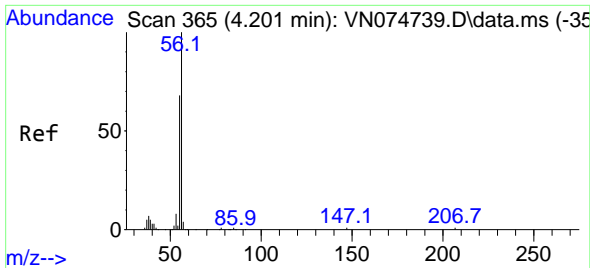
Tgt Ion: 59 Resp: 14747
 Ion Ratio Lower Upper
 59 100
 57 1.4 7.7 11.5#



#12
 1,1-Dichloroethene
 Concen: 0.905 ug/l
 RT: 4.365 min Scan# 393
 Delta R.T. 0.006 min
 Lab File: VN074779.D
 Acq: 06 Oct 2022 13:27

Tgt Ion: 96 Resp: 4432
 Ion Ratio Lower Upper
 96 100
 61 118.2 123.9 185.9#
 98 61.2 48.8 73.2

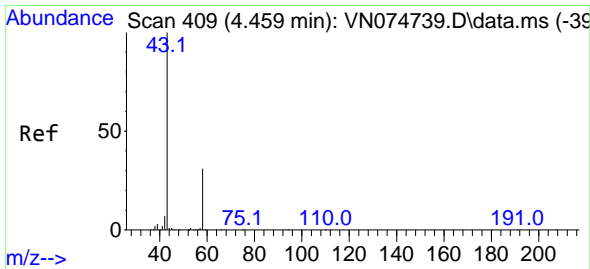
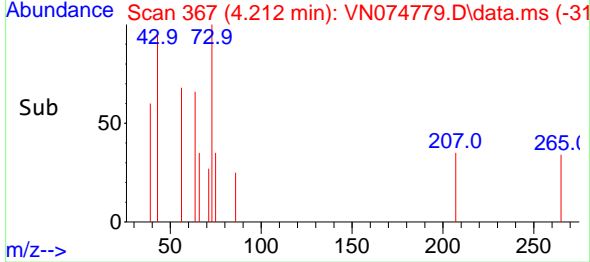
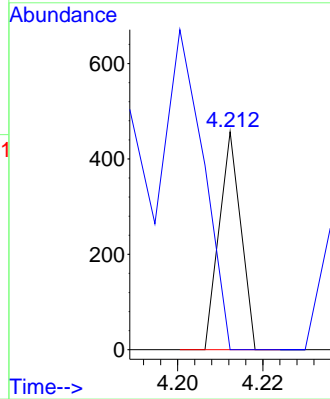
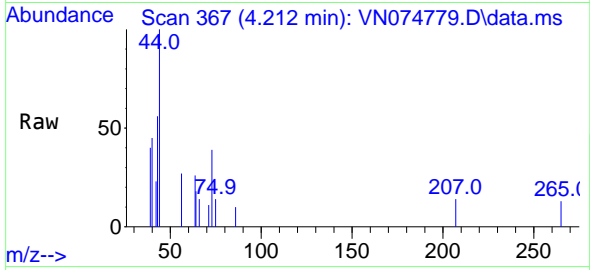




#13
 Acrolein
 Concen: Below Cal
 RT: 4.212 min Scan# 30
 Delta R.T. 0.011 min
 Lab File: VN074779.D
 Acq: 06 Oct 2022 13:27

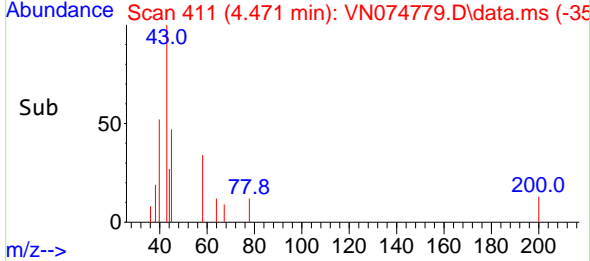
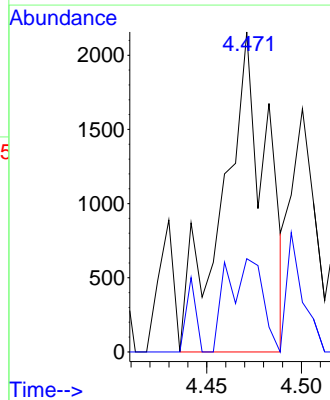
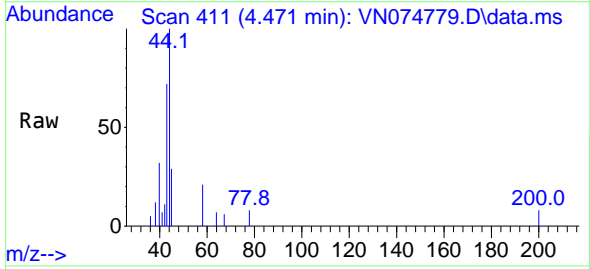
Instrument : MSVOA_N
 ClientSampleId : BP-VPB-RW5-GW-763-765DL

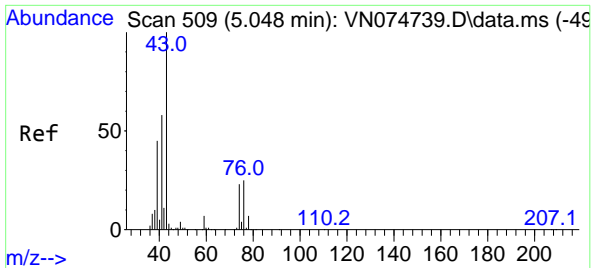
Tgt Ion: 56 Resp: 161
 Ion Ratio Lower Upper
 56 100
 55 437.9 54.9 82.3#



#16
 Acetone
 Concen: 1.033 ug/l
 RT: 4.471 min Scan# 411
 Delta R.T. 0.012 min
 Lab File: VN074779.D
 Acq: 06 Oct 2022 13:27

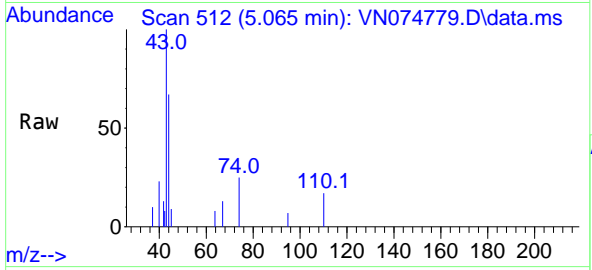
Tgt Ion: 43 Resp: 3499
 Ion Ratio Lower Upper
 43 100
 58 29.2 24.9 37.3



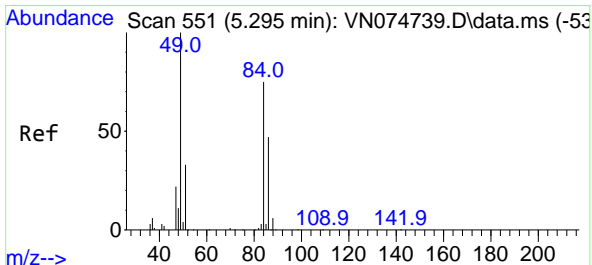
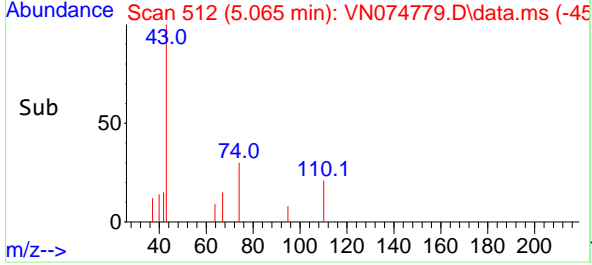
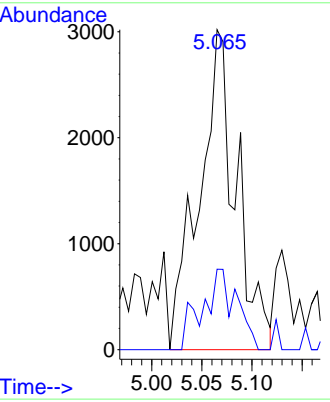


#18
 Methyl Acetate
 Concen: 0.615 ug/l
 RT: 5.065 min Scan# 512
 Delta R.T. 0.018 min
 Lab File: VN074779.D
 Acq: 06 Oct 2022 13:27

Instrument : MSVOA_N
 ClientSampleId : BP-VPB-RW5-GW-763-765DL

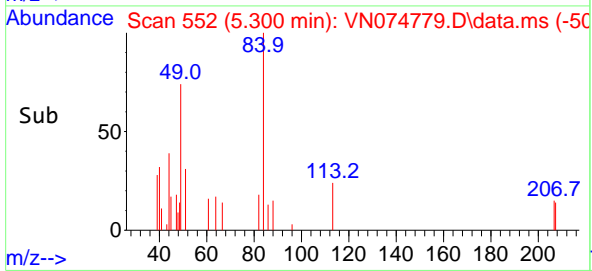
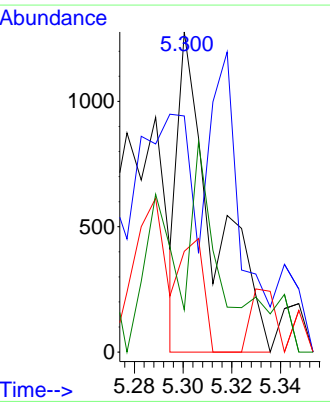
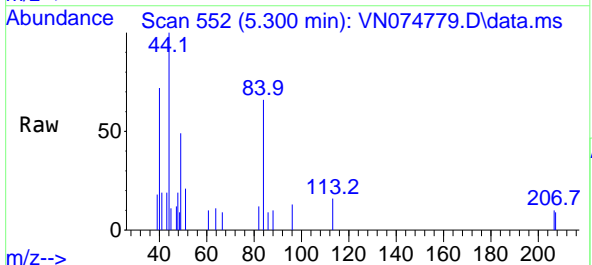


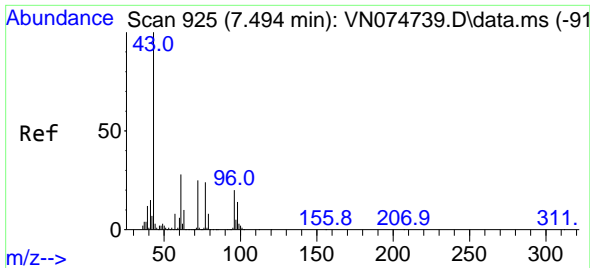
Tgt Ion: 43 Resp: 7715
 Ion Ratio Lower Upper
 43 100
 74 18.6 18.5 27.7



#20
 Methylene Chloride
 Concen: Below Cal
 RT: 5.300 min Scan# 552
 Delta R.T. 0.005 min
 Lab File: VN074779.D
 Acq: 06 Oct 2022 13:27

Tgt Ion: 84 Resp: 1295
 Ion Ratio Lower Upper
 84 100
 49 59.7 107.4 161.0#
 51 14.0 35.1 52.7#
 86 1.3 50.4 75.6#



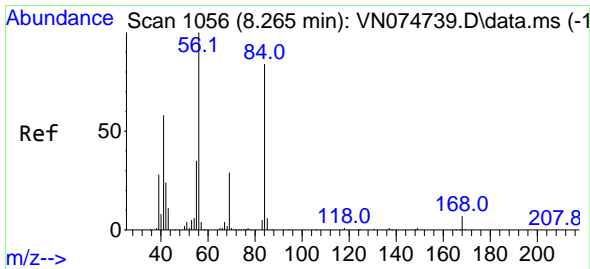
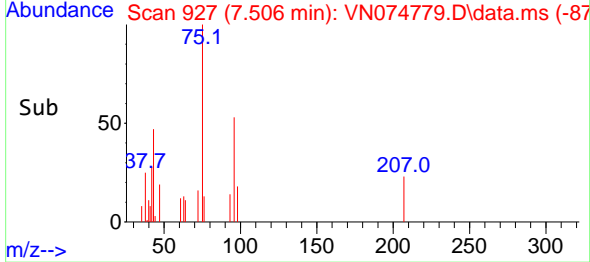
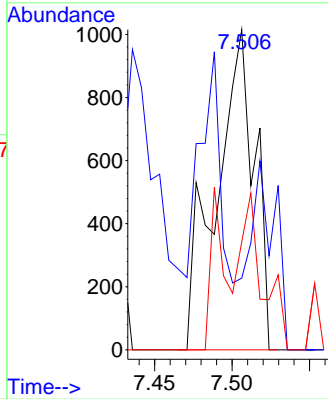
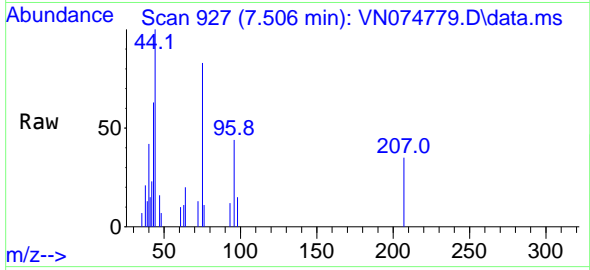


#27
 cis-1,2-Dichloroethene
 Concen: 0.281 ug/l
 RT: 7.506 min Scan# 91
 Delta R.T. 0.012 min
 Lab File: VN074779.D
 Acq: 06 Oct 2022 13:27

Instrument :
 MSVOA_N
 ClientSampleId :
 BP-VPB-RW5-GW-763-765DL

Tgt Ion: 96 Resp: 1753

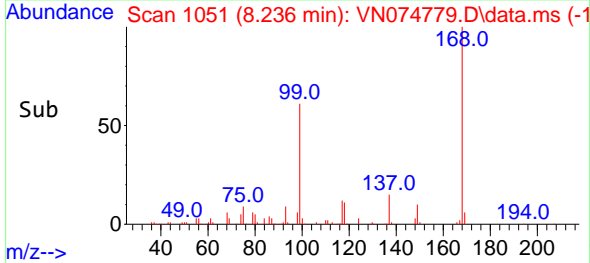
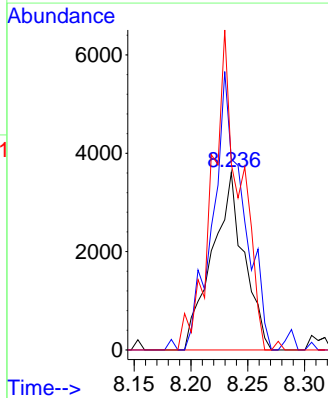
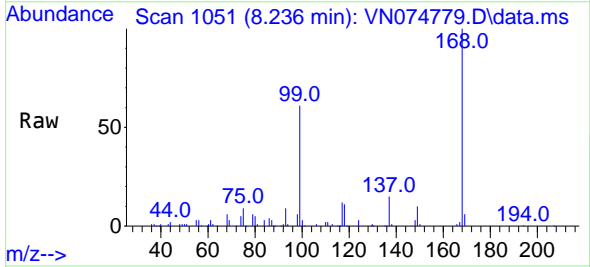
Ion	Ratio	Lower	Upper
96	100		
61	39.9	0.0	303.2
98	28.1	0.0	131.0

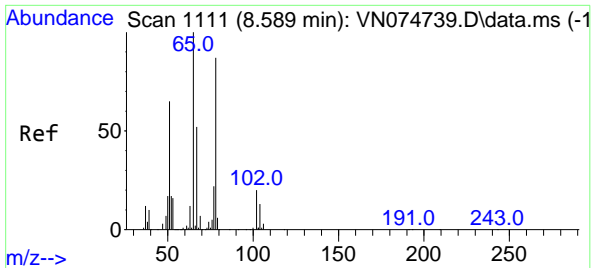


#31
 Cyclohexane
 Concen: 0.684 ug/l
 RT: 8.236 min Scan# 1051
 Delta R.T. -0.029 min
 Lab File: VN074779.D
 Acq: 06 Oct 2022 13:27

Tgt Ion: 56 Resp: 7065

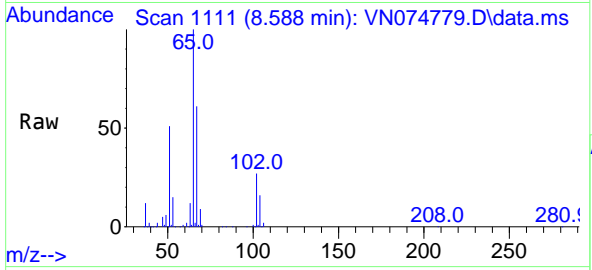
Ion	Ratio	Lower	Upper
56	100		
69	107.5	23.1	34.7#
84	104.7	67.1	100.7#



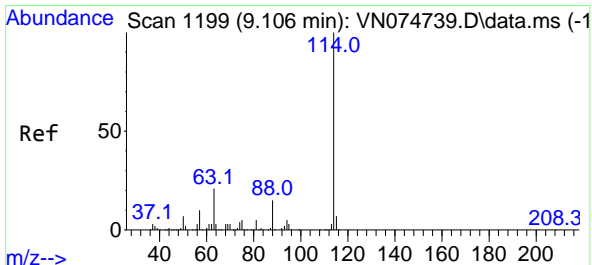
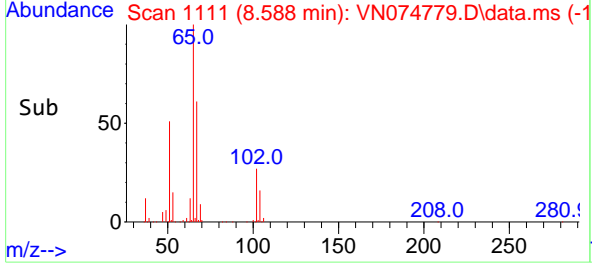
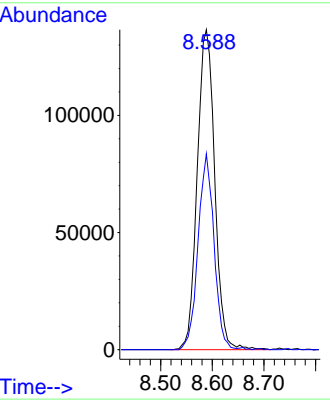


#33
 1,2-Dichloroethane-d4
 Concen: 53.576 ug/l
 RT: 8.588 min Scan# 1111
 Delta R.T. -0.000 min
 Lab File: VN074779.D
 Acq: 06 Oct 2022 13:27

Instrument : MSVOA_N
 ClientSampleId : BP-VPB-RW5-GW-763-765DL

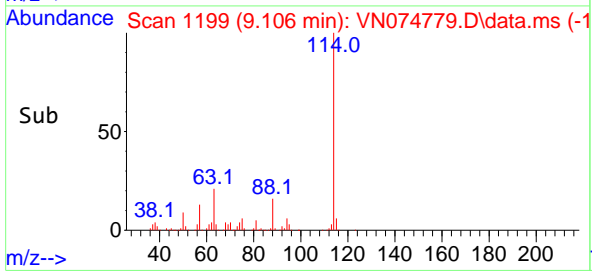
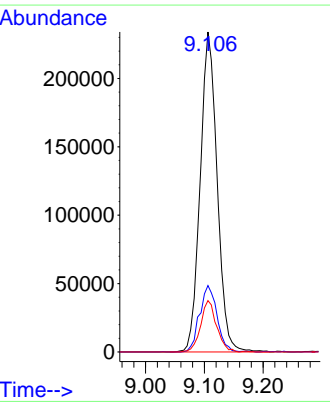
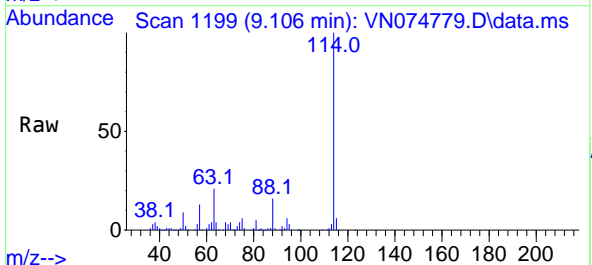


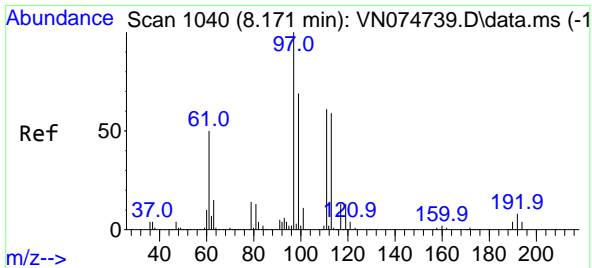
Tgt Ion: 65 Resp: 320348
 Ion Ratio Lower Upper
 65 100
 67 55.9 0.0 109.0



#34
 1,4-Difluorobenzene
 Concen: 50.000 ug/l
 RT: 9.106 min Scan# 1199
 Delta R.T. -0.000 min
 Lab File: VN074779.D
 Acq: 06 Oct 2022 13:27

Tgt Ion: 114 Resp: 469876
 Ion Ratio Lower Upper
 114 100
 63 20.7 0.0 41.2
 88 16.1 0.0 30.2



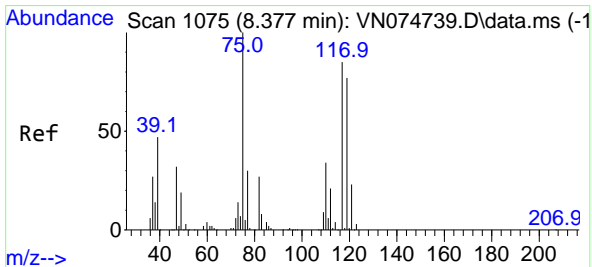
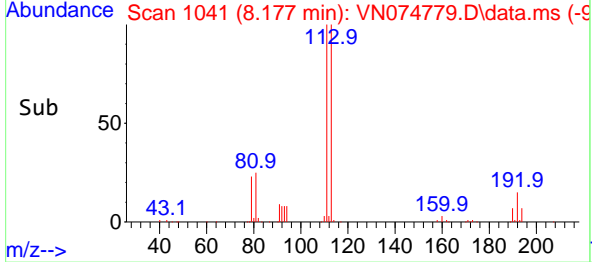
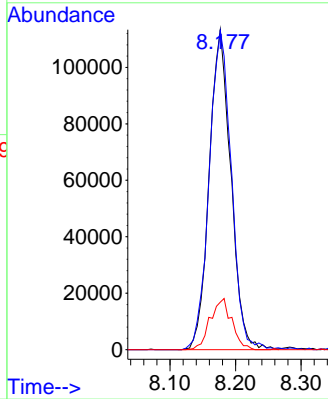
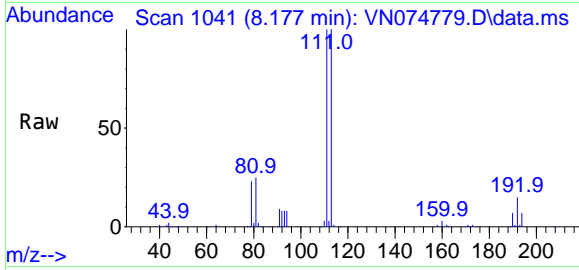


#35
 Dibromofluoromethane
 Concen: 54.557 ug/l
 RT: 8.177 min Scan# 1041
 Delta R.T. 0.006 min
 Lab File: VN074779.D
 Acq: 06 Oct 2022 13:27

Instrument : MSVOA_N
 ClientSampleId : BP-VPB-RW5-GW-763-765DL

Tgt Ion:113 Resp: 259007

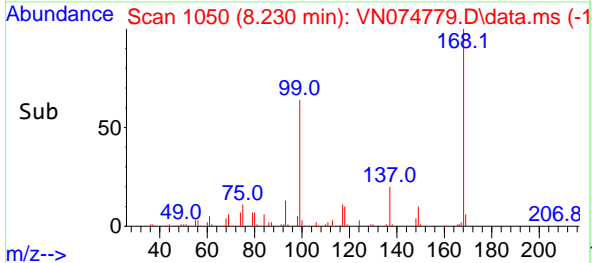
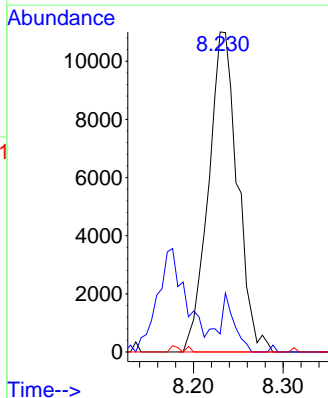
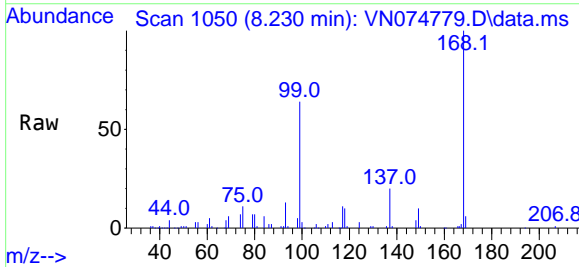
Ion	Ratio	Lower	Upper
113	100		
111	102.4	83.0	124.6
192	16.0	12.6	18.8

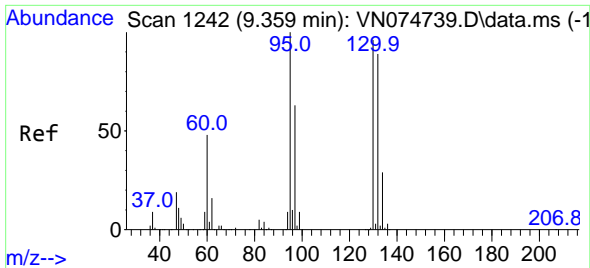


#36
 1,1-Dichloropropene
 Concen: 3.228 ug/l
 RT: 8.230 min Scan# 1050
 Delta R.T. -0.147 min
 Lab File: VN074779.D
 Acq: 06 Oct 2022 13:27

Tgt Ion: 75 Resp: 24803

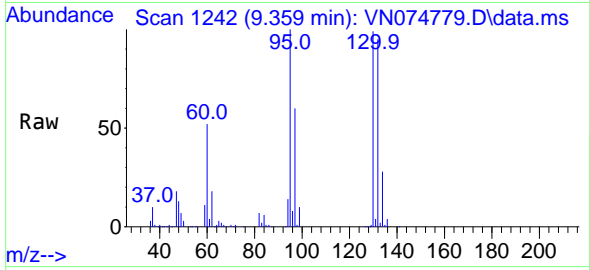
Ion	Ratio	Lower	Upper
75	100		
110	9.0	17.2	51.5#
77	0.0	24.3	36.5#



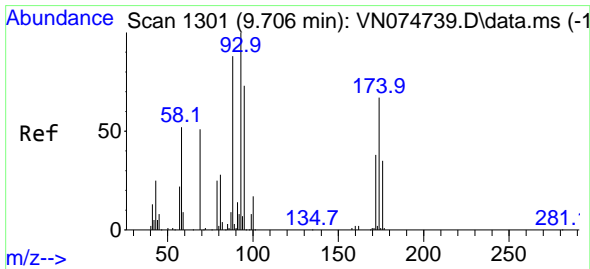
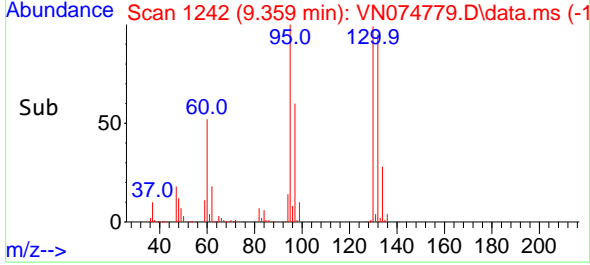
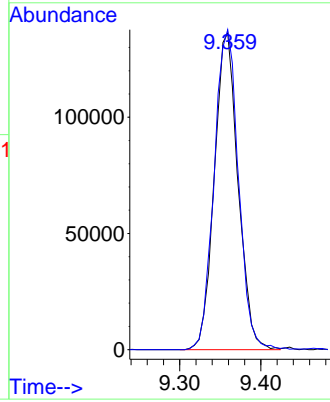


#44
 Trichloroethene
 Concen: 53.450 ug/l
 RT: 9.359 min Scan# 11
 Delta R.T. -0.000 min
 Lab File: VN074779.D
 Acq: 06 Oct 2022 13:27

Instrument : MSVOA_N
 ClientSampleId : BP-VPB-RW5-GW-763-765DL

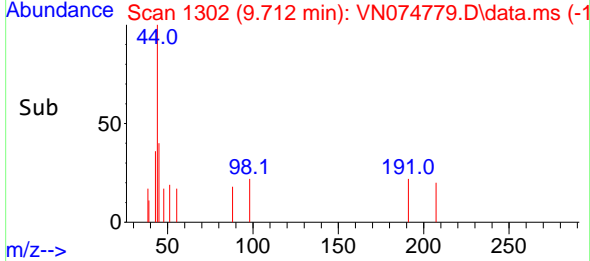
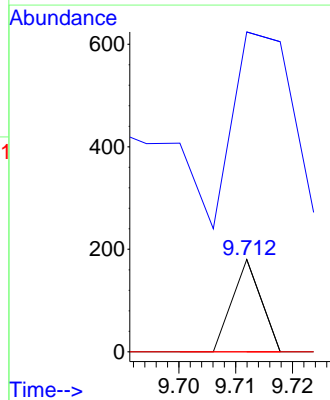
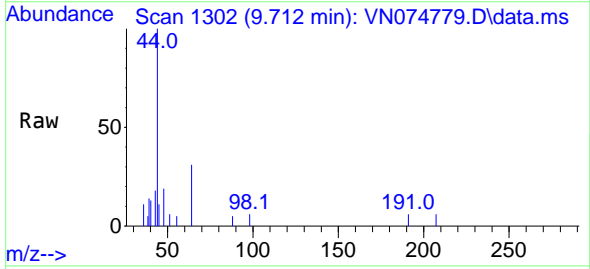


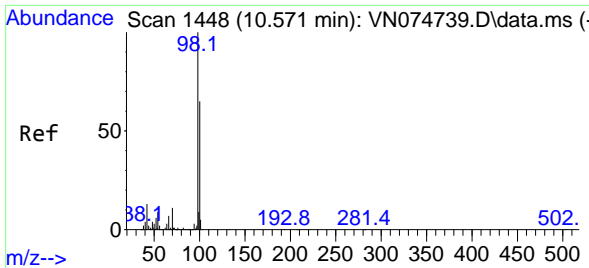
Tgt Ion:130 Resp: 276925
 Ion Ratio Lower Upper
 130 100
 95 101.1 0.0 207.6



#49
 1,4-Dioxane
 Concen: 0.378 ug/l
 RT: 9.712 min Scan# 1302
 Delta R.T. 0.006 min
 Lab File: VN074779.D
 Acq: 06 Oct 2022 13:27

Tgt Ion: 88 Resp: 64
 Ion Ratio Lower Upper
 88 100
 43 431.3 23.4 35.2#
 58 0.0 54.9 82.3#

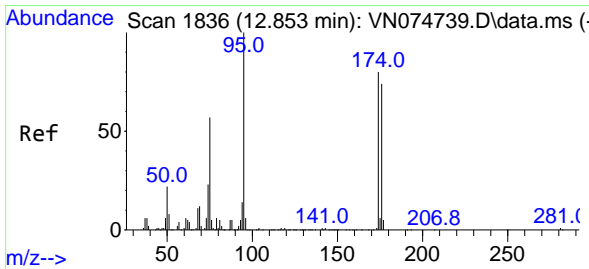
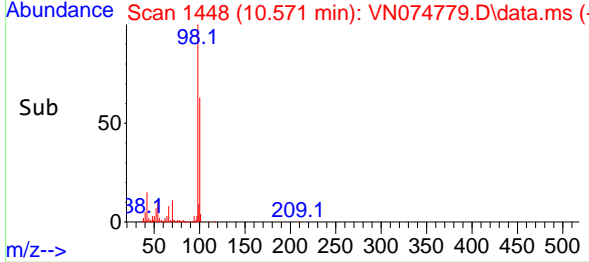
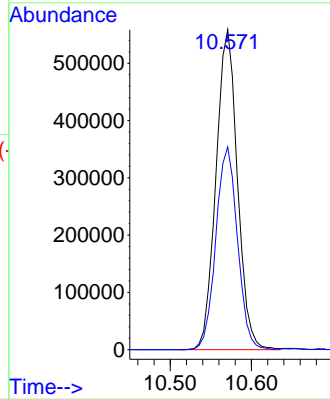
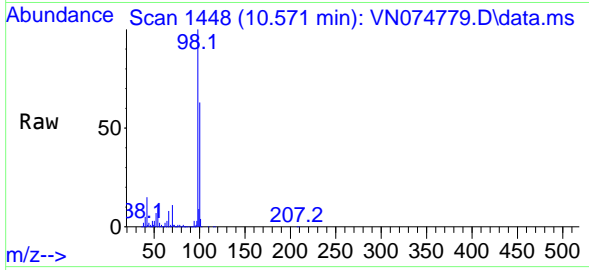




#50
 Toluene-d8
 Concen: 50.452 ug/l
 RT: 10.571 min Scan# 1448
 Delta R.T. -0.000 min
 Lab File: VN074779.D
 Acq: 06 Oct 2022 13:27

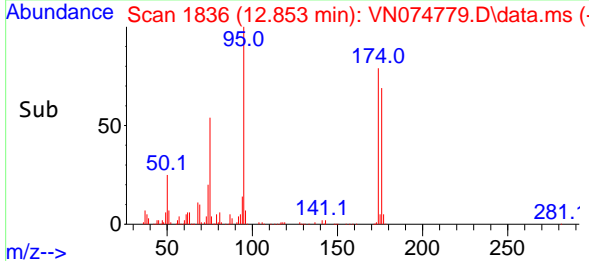
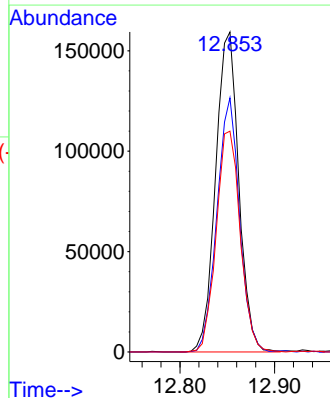
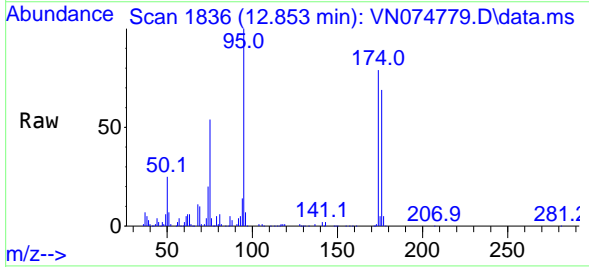
Instrument : MSVOA_N
 ClientSampleId : BP-VPB-RW5-GW-763-765DL

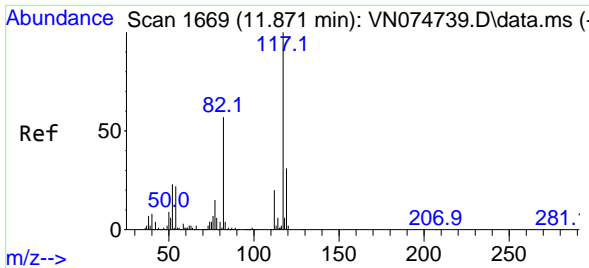
Tgt Ion: 98 Resp: 1027732
 Ion Ratio Lower Upper
 98 100
 100 63.6 50.7 76.1



#62
 4-Bromofluorobenzene
 Concen: 43.803 ug/l
 RT: 12.853 min Scan# 1836
 Delta R.T. -0.000 min
 Lab File: VN074779.D
 Acq: 06 Oct 2022 13:27

Tgt Ion: 95 Resp: 271246
 Ion Ratio Lower Upper
 95 100
 174 77.4 0.0 149.4
 176 71.6 0.0 142.0



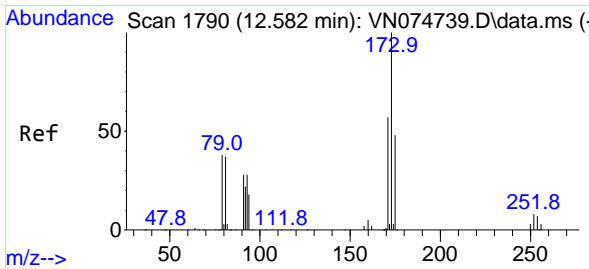
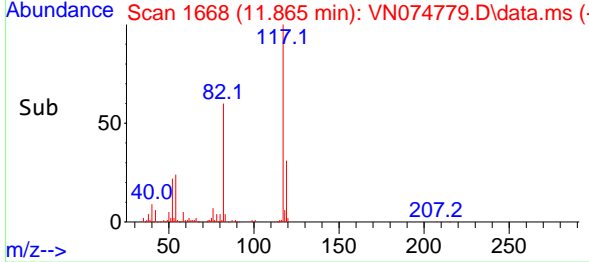
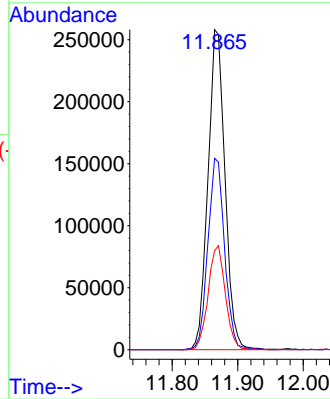
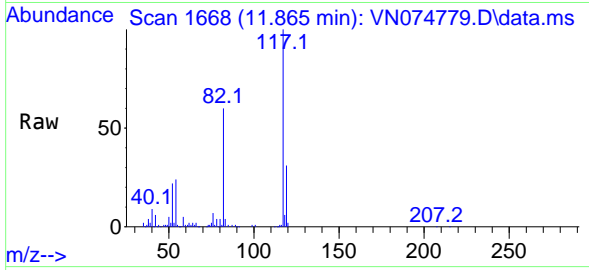


#63
 Chlorobenzene-d5
 Concen: 50.000 ug/l
 RT: 11.865 min Scan# 11
 Delta R.T. -0.006 min
 Lab File: VN074779.D
 Acq: 06 Oct 2022 13:27

Instrument : MSVOA_N
 ClientSampleId : BP-VPB-RW5-GW-763-765DL

Tgt Ion:117 Resp: 465916

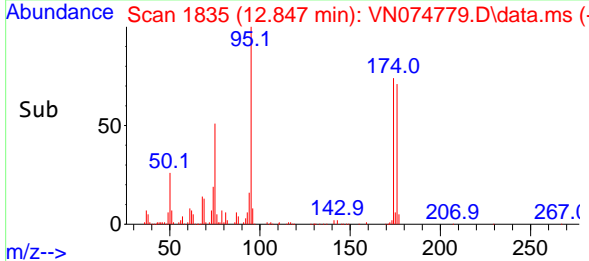
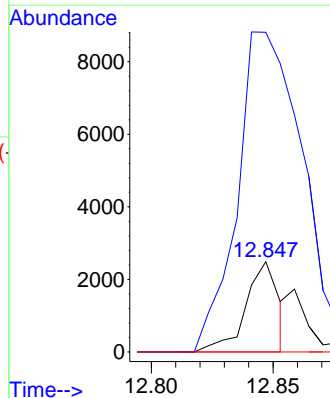
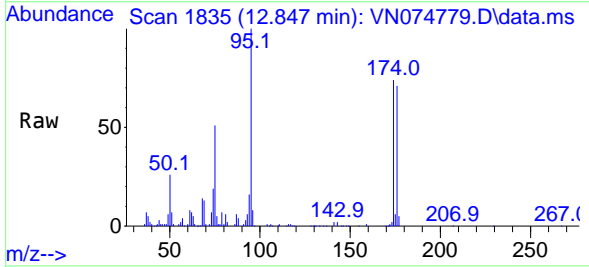
Ion	Ratio	Lower	Upper
117	100		
82	59.8	45.4	68.2
119	30.9	25.1	37.7

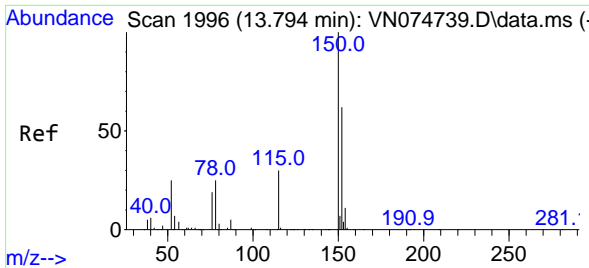


#71
 Bromoform
 Concen: 0.589 ug/l
 RT: 12.847 min Scan# 1835
 Delta R.T. 0.265 min
 Lab File: VN074779.D
 Acq: 06 Oct 2022 13:27

Tgt Ion:173 Resp: 2341

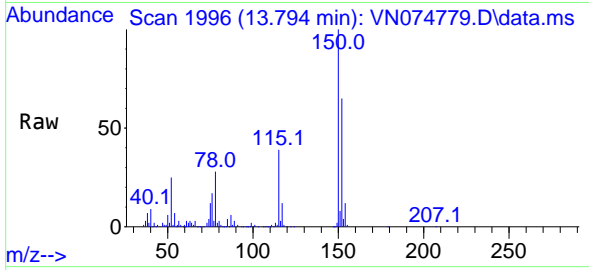
Ion	Ratio	Lower	Upper
173	100		
175	586.7	23.9	71.7#
254	0.0	0.1	0.1#



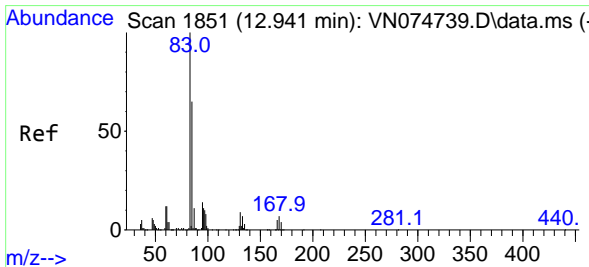
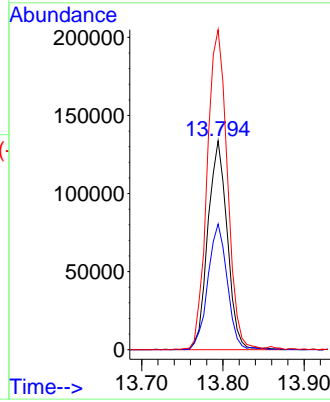
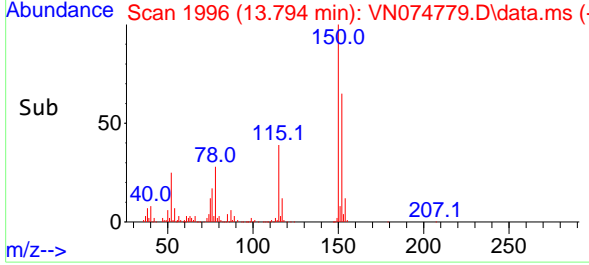


#72
 1,4-Dichlorobenzene-d4
 Concen: 50.000 ug/l
 RT: 13.794 min Scan# 1996
 Delta R.T. -0.000 min
 Lab File: VN074779.D
 Acq: 06 Oct 2022 13:27

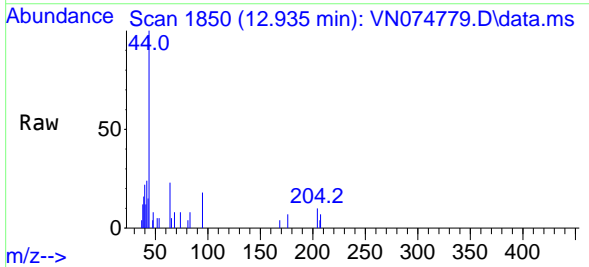
Instrument : MSVOA_N
 ClientSampleId : BP-VPB-RW5-GW-763-765DL



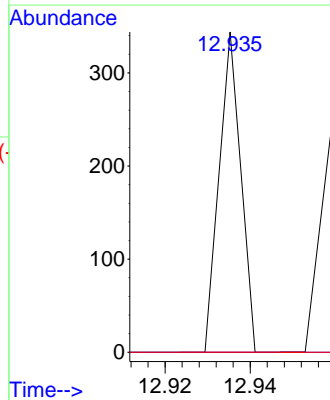
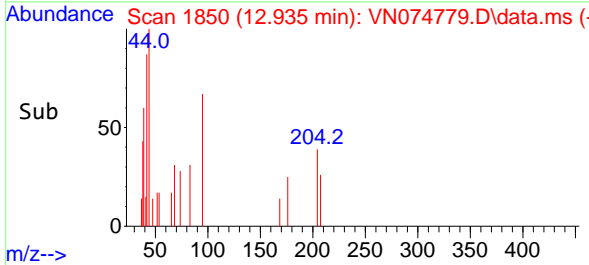
Tgt Ion:152 Resp: 221886
 Ion Ratio Lower Upper
 152 100
 115 60.4 30.0 90.0
 150 159.6 0.0 356.4

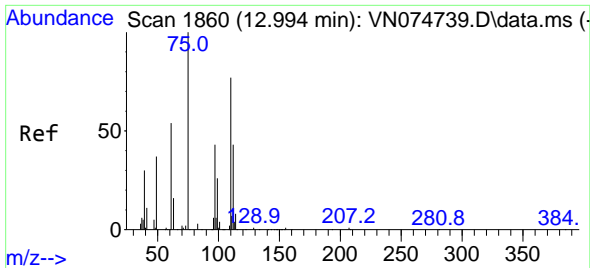


#75
 1,1,2,2-Tetrachloroethane
 Concen: Below Cal
 RT: 12.935 min Scan# 1850
 Delta R.T. -0.006 min
 Lab File: VN074779.D
 Acq: 06 Oct 2022 13:27



Tgt Ion: 83 Resp: 121
 Ion Ratio Lower Upper
 83 100
 131 0.0 4.3 12.8#
 85 0.0 32.9 98.6#

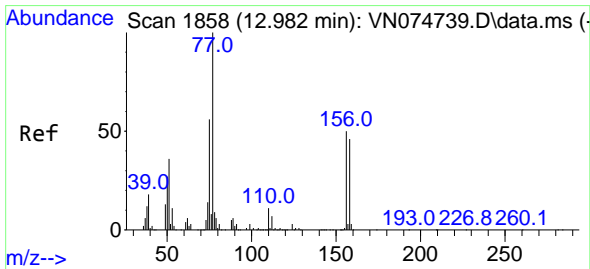
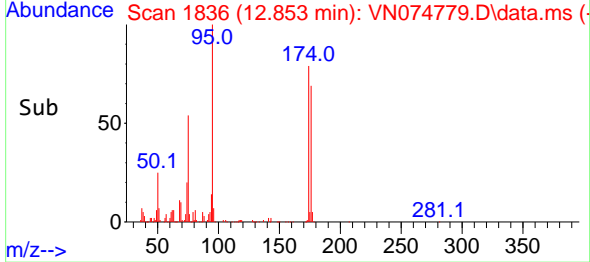
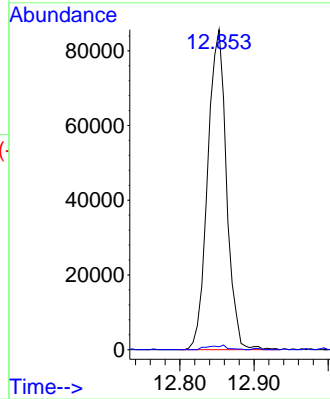
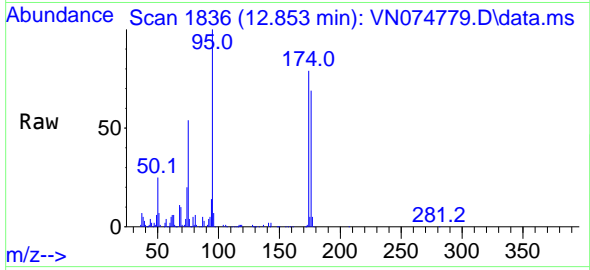




#76
 1,2,3-Trichloropropane
 Concen: 22.859 ug/l
 RT: 12.853 min Scan# 1836
 Delta R.T. -0.141 min
 Lab File: VN074779.D
 Acq: 06 Oct 2022 13:27

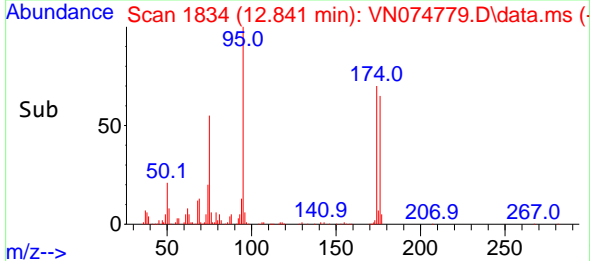
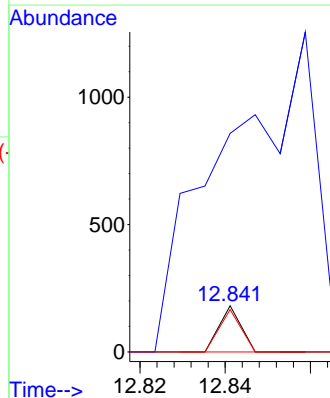
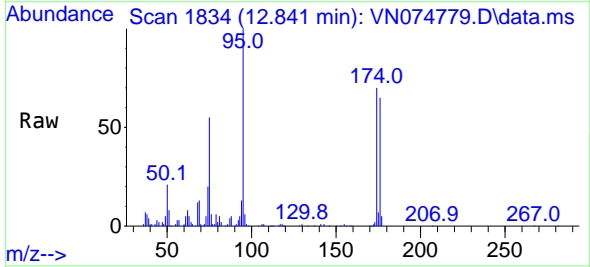
Instrument : MSVOA_N
 ClientSampleId : BP-VPB-RW5-GW-763-765DL

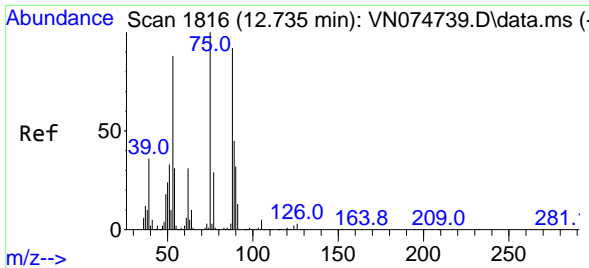
Tgt Ion: 75 Resp: 151385
 Ion Ratio Lower Upper
 75 100
 77 1.4 76.9 230.7#



#77
 Bromobenzene
 Concen: Below Cal
 RT: 12.841 min Scan# 1834
 Delta R.T. -0.141 min
 Lab File: VN074779.D
 Acq: 06 Oct 2022 13:27

Tgt Ion: 156 Resp: 64
 Ion Ratio Lower Upper
 156 100
 77 3279.7 124.7 374.1#
 158 92.2 48.3 144.9

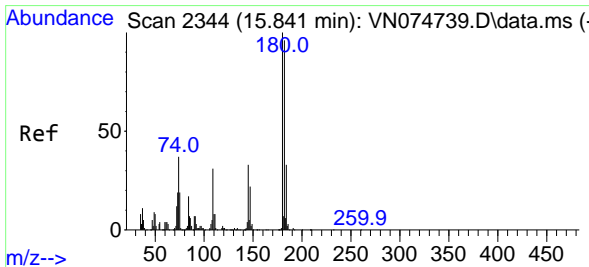
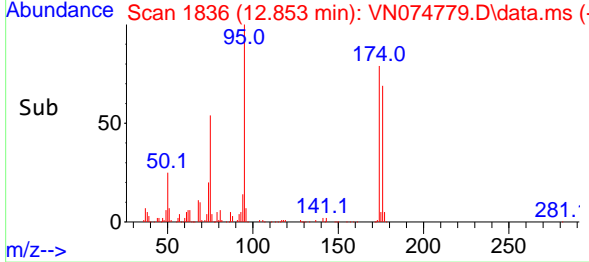
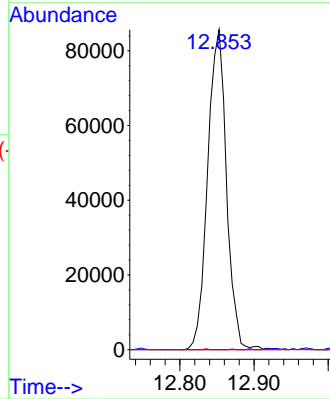
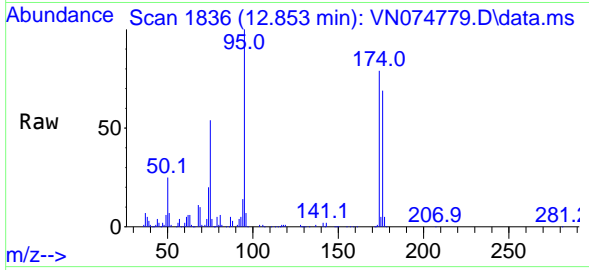




#81
 trans-1,4-Dichloro-2-butene
 Concen: 44.537 ug/l
 RT: 12.853 min Scan# 11
 Delta R.T. 0.118 min
 Lab File: VN074779.D
 Acq: 06 Oct 2022 13:27

Instrument : MSVOA_N
 ClientSampleId : BP-VPB-RW5-GW-763-765DL

Tgt Ion: 75 Resp: 151385
 Ion Ratio Lower Upper
 75 100
 53 0.0 71.4 107.0#
 89 0.1 32.1 48.1#



#96
 1,2,3-Trichlorobenzene
 Concen: Below Cal
 RT: 15.864 min Scan# 2348
 Delta R.T. 0.023 min
 Lab File: VN074779.D
 Acq: 06 Oct 2022 13:27

Tgt Ion:180 Resp: 273
 Ion Ratio Lower Upper
 180 100
 182 0.0 47.3 142.0#
 145 0.0 17.1 51.2#

