

Data Path : Z:\voasrv\HPCHEM1\MSVOA_N\Data\VN100623\
 Data File : VN079448.D
 Acq On : 06 Oct 2023 15:30
 Operator : JC\MD
 Sample : PB156147ZHE#03
 Misc : 5.0mL/MSVOA_N/WATER
 ALS Vial : 17 Sample Multiplier: 1

Instrument :
 MSVOA_N
 ClientSampleId :

Quant Time: Oct 06 23:04:37 2023
 Quant Method : Z:\voasrv\HPCHEM1\MSVOA_N\methods\82N100523W.M
 Quant Title : SW846 8260
 QLast Update : Fri Oct 06 03:34:49 2023
 Response via : Initial Calibration

Compound	R.T.	QIon	Response	Conc	Units	Dev(Min)

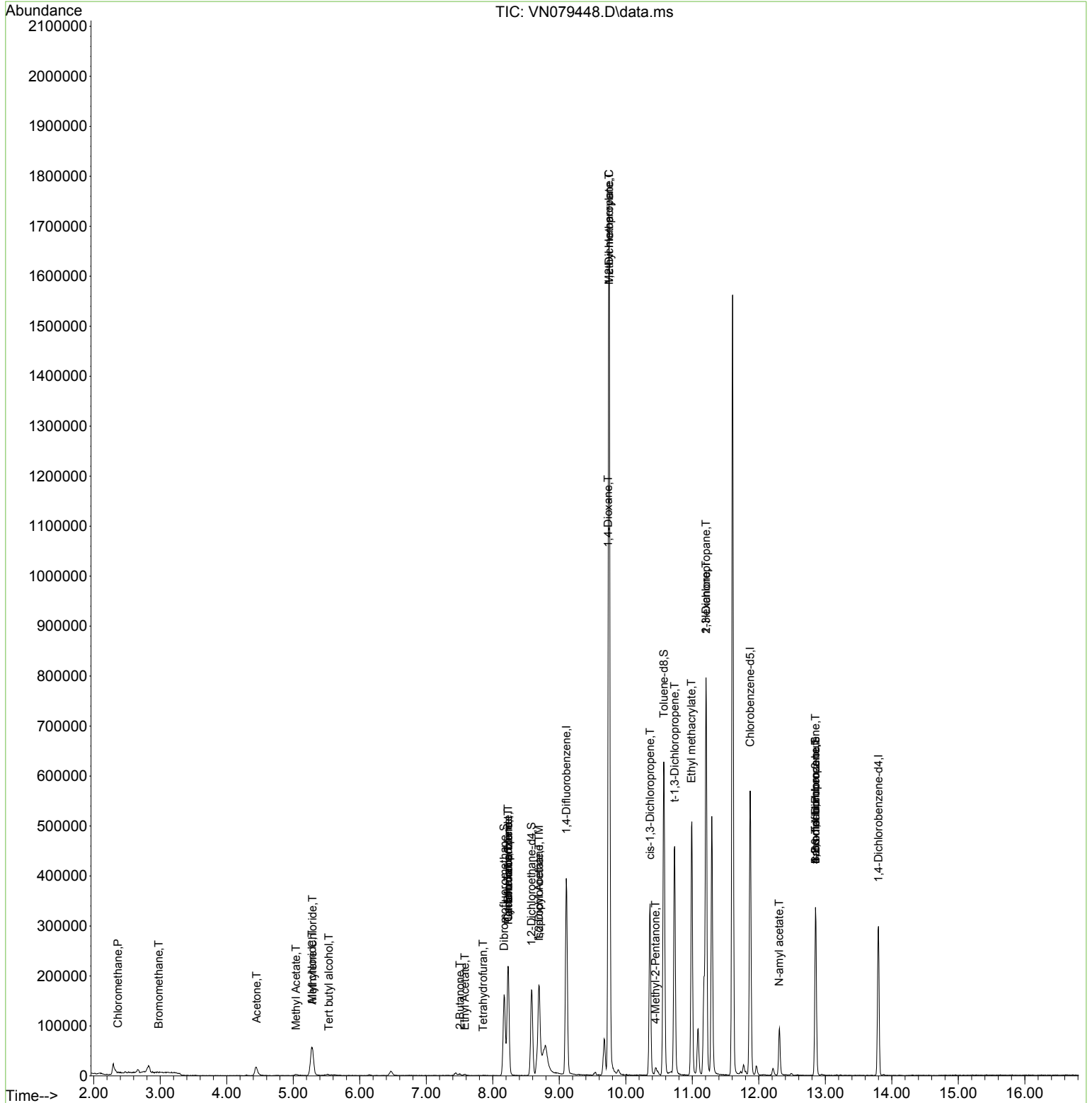
Internal Standards						
1) Pentafluorobenzene	8.235	168	152063	50.000	ug/l	0.00
34) 1,4-Difluorobenzene	9.106	114	322398	50.000	ug/l	0.00
63) Chlorobenzene-d5	11.871	117	314619	50.000	ug/l	0.00
72) 1,4-Dichlorobenzene-d4	13.800	152	77620	50.000	ug/l	0.00
System Monitoring Compounds						
33) 1,2-Dichloroethane-d4	8.582	65	136697	55.442	ug/l	0.00
Spiked Amount	50.000	Range 74 - 125	Recovery	=	110.880%	
35) Dibromofluoromethane	8.171	113	116430	50.253	ug/l	0.00
Spiked Amount	50.000	Range 75 - 124	Recovery	=	100.500%	
50) Toluene-d8	10.571	98	422263	50.371	ug/l	0.00
Spiked Amount	50.000	Range 86 - 113	Recovery	=	100.740%	
62) 4-Bromofluorobenzene	12.853	95	112554	41.837	ug/l	0.00
Spiked Amount	50.000	Range 83 - 123	Recovery	=	83.680%	
Target Compounds						
						Qvalue
3) Chloromethane	2.365	50	604	0.222	ug/l #	75
5) Bromomethane	2.977	94	511	0.302	ug/l #	71
11) Tert butyl alcohol	5.536	59	654	1.762	ug/l #	72
14) Allyl chloride	5.283	41	1826	0.630	ug/l #	19
16) Acetone	4.447	43	33410	34.164	ug/l #	86
18) Methyl Acetate	5.042	43	4202	0.878	ug/l #	59
20) Methylene Chloride	5.289	84	44689	20.513	ug/l #	83
25) 2-Butanone	7.506	43	5083	3.502	ug/l #	82
29) Tetrahydrofuran	7.853	42	227	0.242	ug/l #	36
31) Cyclohexane	8.230	56	4534	1.296	ug/l #	38
36) 1,1-Dichloropropene	8.230	75	13576	3.904	ug/l #	46
37) Ethyl Acetate	7.583	43	4455	1.288	ug/l #	70
38) Carbon Tetrachloride	8.230	117	16029	4.605	ug/l #	19
42) 1,2-Dichloroethane	8.694	62	1097	0.292	ug/l #	73
43) Isopropyl Acetate	8.694	43	234820	38.737	ug/l #	73
45) 1,2-Dichloropropane	9.747	63	2053	0.755	ug/l #	45
48) Methyl methacrylate	9.747	41	160816	61.909	ug/l #	29
49) 1,4-Dioxane	9.735	88	59	1.233	ug/l #	1
51) 4-Methyl-2-Pentanone	10.447	43	16546	4.835	ug/l #	64
53) t-1,3-Dichloropropene	10.735	75	1036	0.284	ug/l #	62
54) cis-1,3-Dichloropropene	10.365	75	56311	14.081	ug/l #	71
56) Ethyl methacrylate	10.988	69	3235	0.965	ug/l #	1
57) 1,3-Dichloropropane	11.206	76	7478	1.775	ug/l #	42
59) 2-Hexanone	11.206	43	103063	41.738	ug/l #	47
71) Bromoform	12.853	173	852	0.454	ug/l #	1
74) N-amyl acetate	12.306	43	28863	9.750	ug/l #	46
76) 1,2,3-Trichloropropane	12.853	75	61732	27.584	ug/l #	1
81) trans-1,4-Dichloro-2-b...	12.853	75	61732	80.035	ug/l #	15

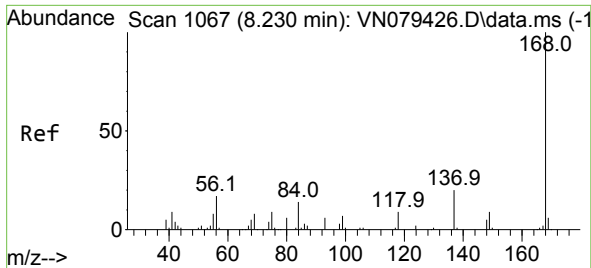
(#) = qualifier out of range (m) = manual integration (+) = signals summed

Data Path : Z:\voasrv\HPCHEM1\MSVOA_N\Data\VN100623\
 Data File : VN079448.D
 Acq On : 06 Oct 2023 15:30
 Operator : JC\MD
 Sample : PB156147ZHE#03
 Misc : 5.0mL/MSVOA_N/WATER
 ALS Vial : 17 Sample Multiplier: 1

Instrument :
 MSVOA_N
 ClientSampleId :

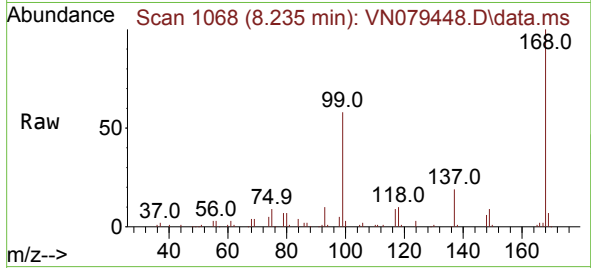
Quant Time: Oct 06 23:04:37 2023
 Quant Method : Z:\voasrv\HPCHEM1\MSVOA_N\methods\82N100523W.M
 Quant Title : SW846 8260
 QLast Update : Fri Oct 06 03:34:49 2023
 Response via : Initial Calibration



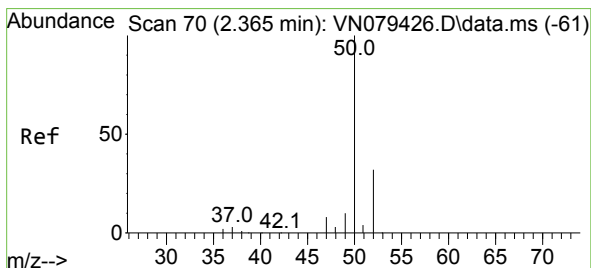
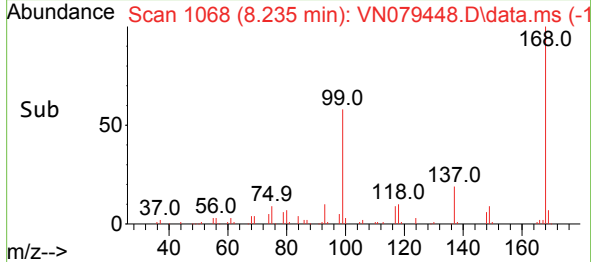
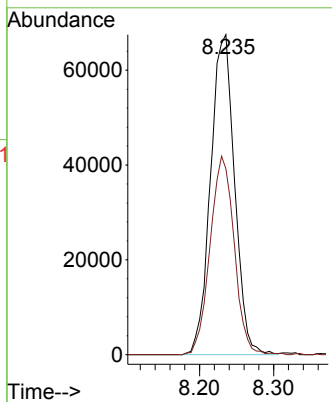


#1
 Pentafluorobenzene
 Concen: 50.000 ug/l
 RT: 8.235 min Scan# 10
 Delta R.T. 0.005 min
 Lab File: VN079448.D
 Acq: 06 Oct 2023 15:30

Instrument :
 MSVOA_N
 ClientSampleId :

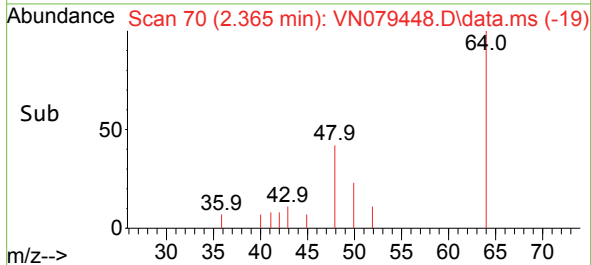
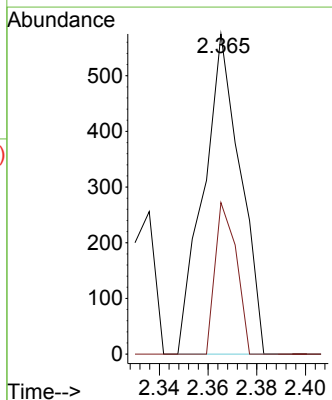
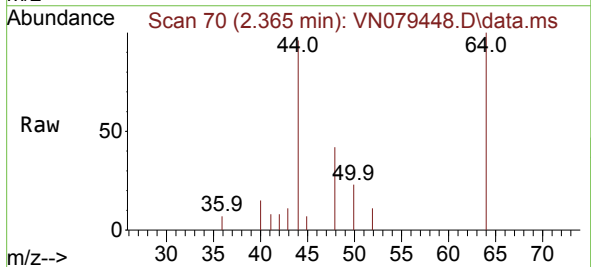


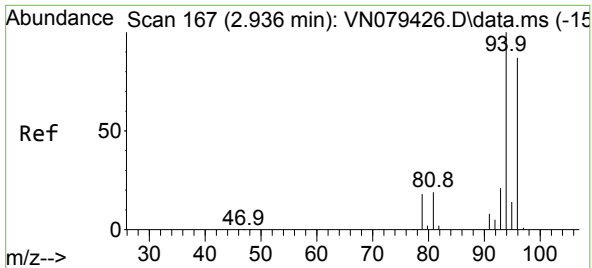
Tgt Ion:168 Resp: 152063
 Ion Ratio Lower Upper
 168 100
 99 58.1 53.0 79.6



#3
 Chloromethane
 Concen: 0.222 ug/l
 RT: 2.365 min Scan# 70
 Delta R.T. -0.000 min
 Lab File: VN079448.D
 Acq: 06 Oct 2023 15:30

Tgt Ion: 50 Resp: 604
 Ion Ratio Lower Upper
 50 100
 52 47.3 26.5 39.7#

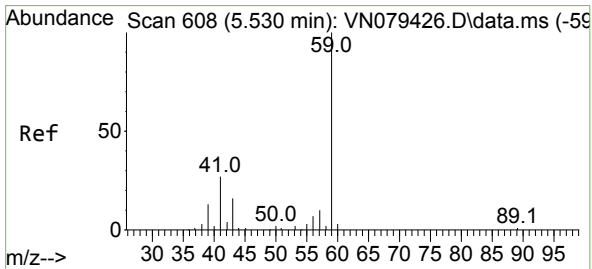
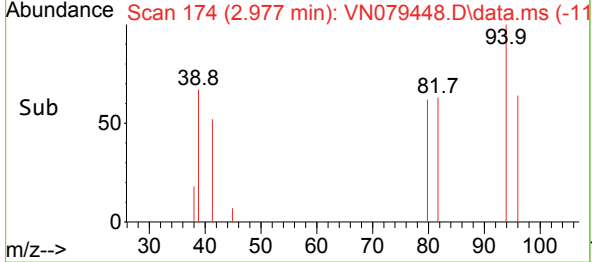
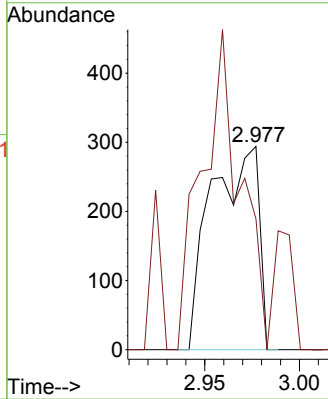
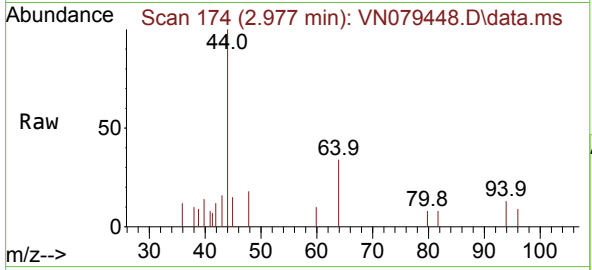




#5
 Bromomethane
 Concen: 0.302 ug/l
 RT: 2.977 min Scan# 11
 Delta R.T. 0.041 min
 Lab File: VN079448.D
 Acq: 06 Oct 2023 15:30

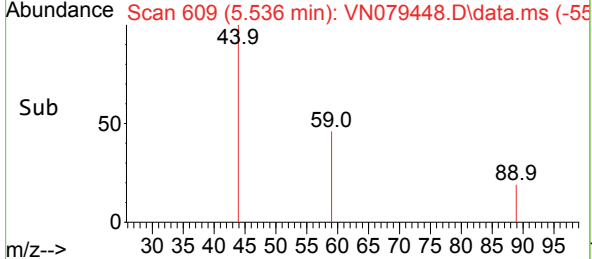
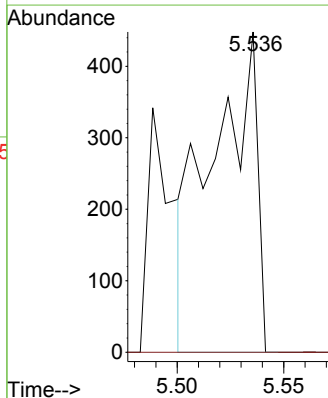
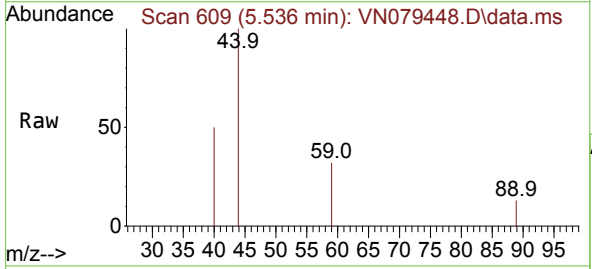
Instrument :
 MSVOA_N
 ClientSampleId :

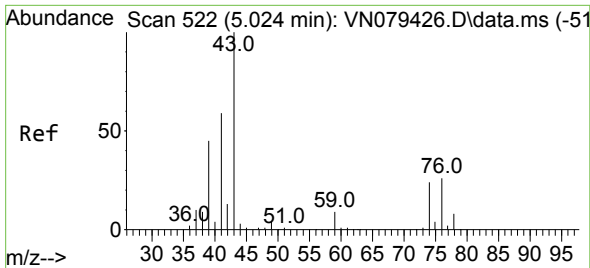
Tgt Ion: 94 Resp: 511
 Ion Ratio Lower Upper
 94 100
 96 64.3 73.1 109.7#



#11
 Tert butyl alcohol
 Concen: 1.762 ug/l
 RT: 5.536 min Scan# 609
 Delta R.T. 0.006 min
 Lab File: VN079448.D
 Acq: 06 Oct 2023 15:30

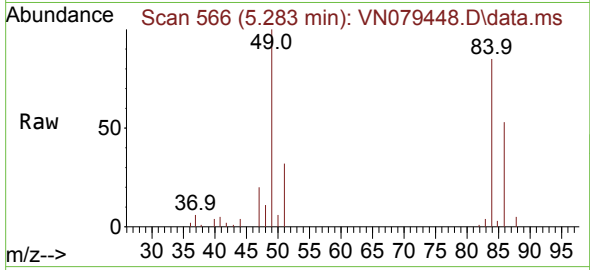
Tgt Ion: 59 Resp: 654
 Ion Ratio Lower Upper
 59 100
 57 0.0 8.2 12.4#





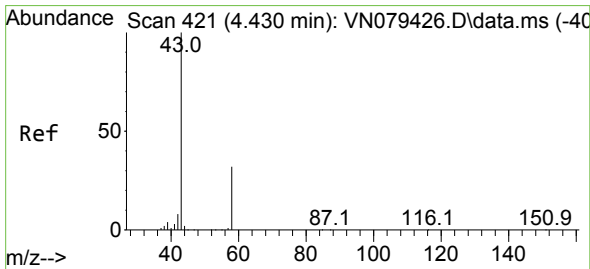
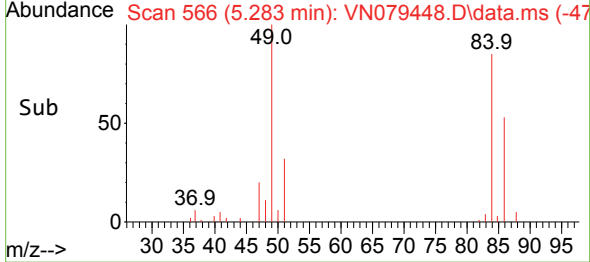
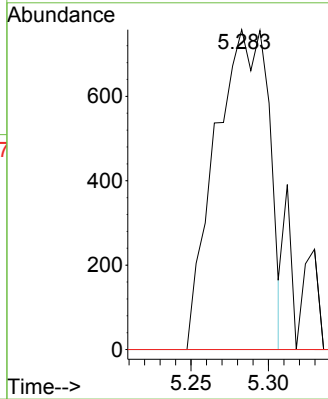
#14
 Allyl chloride
 Concen: 0.630 ug/l
 RT: 5.283 min Scan# 50
 Delta R.T. 0.259 min
 Lab File: VN079448.D
 Acq: 06 Oct 2023 15:30

Instrument :
 MSVOA_N
 ClientSampleId :



Tgt Ion: 41 Resp: 1826

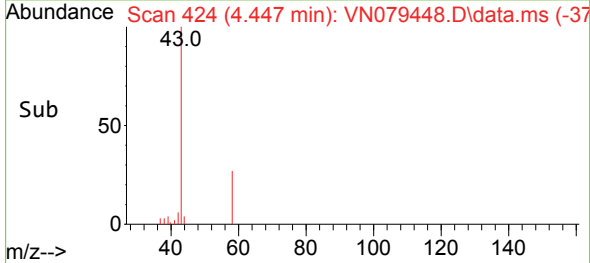
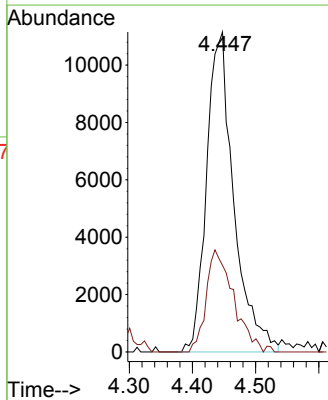
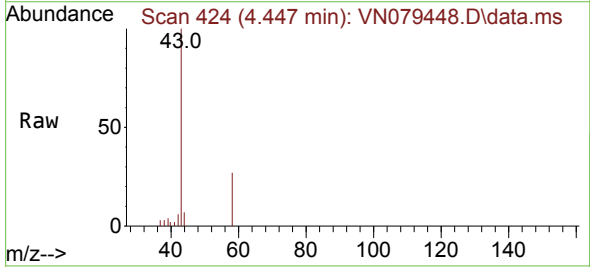
Ion	Ratio	Lower	Upper
41	100		
39	0.0	58.8	88.2#
76	0.0	39.1	58.7#

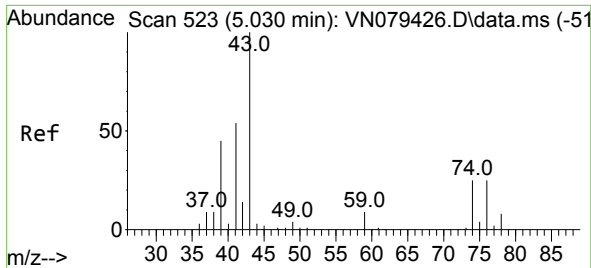


#16
 Acetone
 Concen: 34.164 ug/l
 RT: 4.447 min Scan# 424
 Delta R.T. 0.017 min
 Lab File: VN079448.D
 Acq: 06 Oct 2023 15:30

Tgt Ion: 43 Resp: 33410

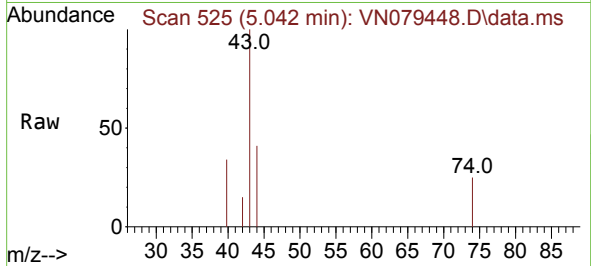
Ion	Ratio	Lower	Upper
43	100		
58	27.0	28.0	42.0#



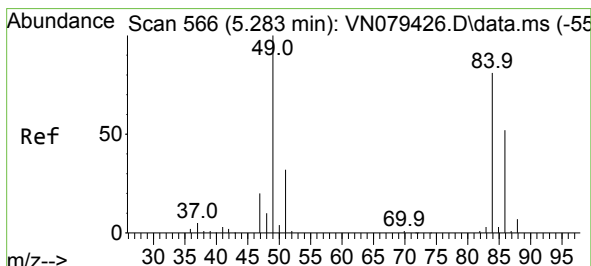
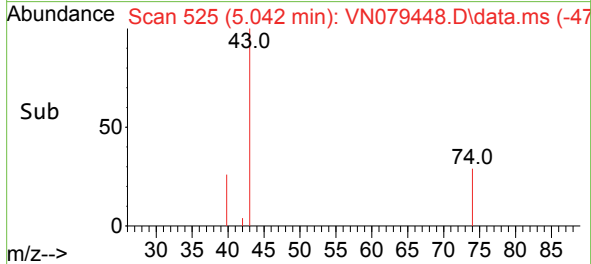
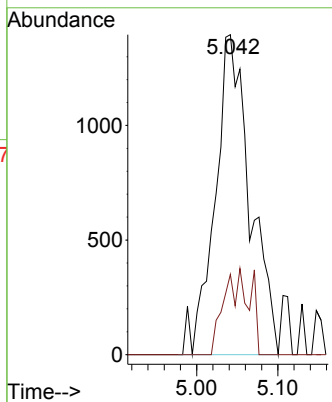


#18
 Methyl Acetate
 Concen: 0.878 ug/l
 RT: 5.042 min Scan# 51
 Delta R.T. 0.012 min
 Lab File: VN079448.D
 Acq: 06 Oct 2023 15:30

Instrument :
 MSVOA_N
 ClientSampleId :

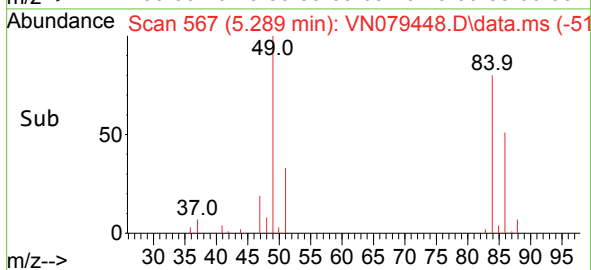
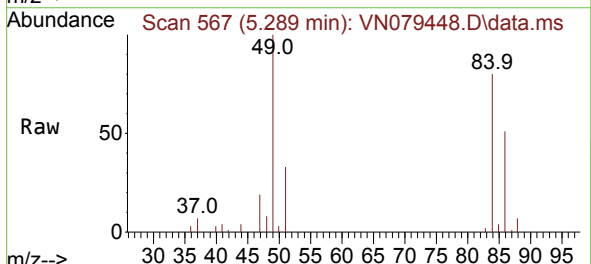
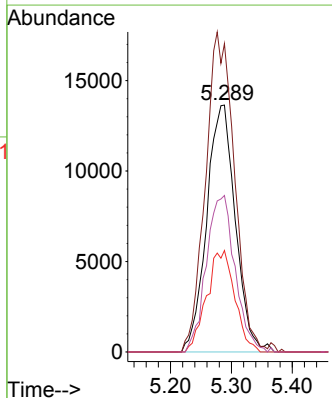


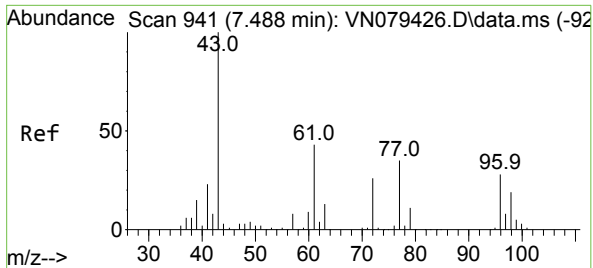
Tgt Ion: 43 Resp: 4202
 Ion Ratio Lower Upper
 43 100
 74 9.8 26.2 39.4#



#20
 Methylene Chloride
 Concen: 20.513 ug/l
 RT: 5.289 min Scan# 567
 Delta R.T. 0.006 min
 Lab File: VN079448.D
 Acq: 06 Oct 2023 15:30

Tgt Ion: 84 Resp: 44689
 Ion Ratio Lower Upper
 84 100
 49 124.9 79.7 119.5#
 51 41.1 25.2 37.8#
 86 63.4 53.3 79.9

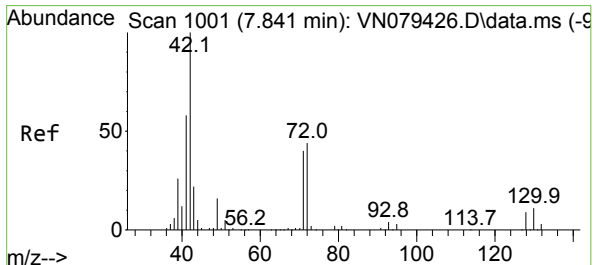
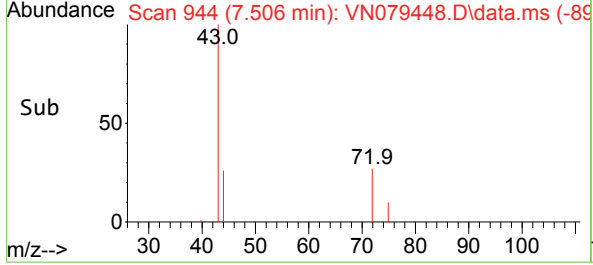
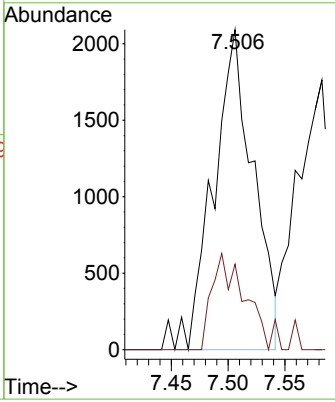
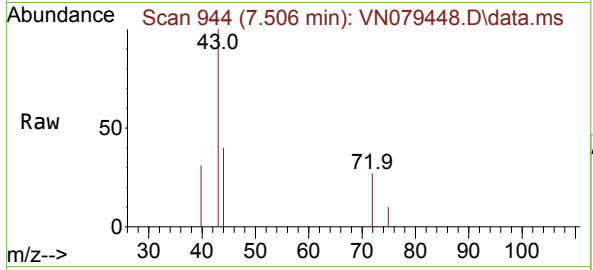




#25
 2-Butanone
 Concen: 3.502 ug/l
 RT: 7.506 min Scan# 94
 Delta R.T. 0.018 min
 Lab File: VN079448.D
 Acq: 06 Oct 2023 15:30

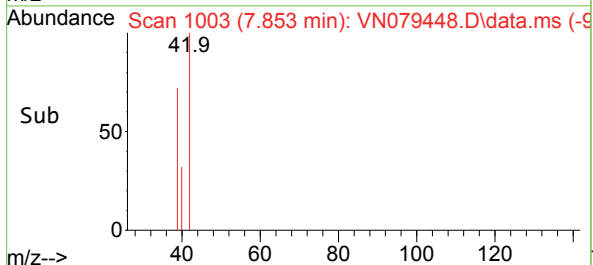
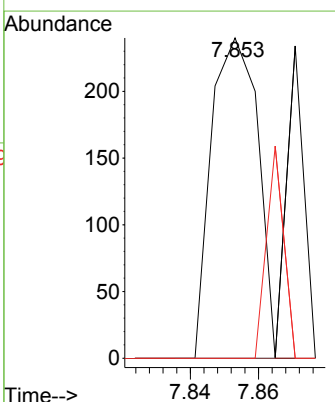
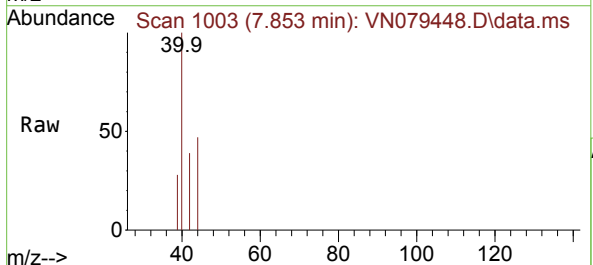
Instrument : MSVOA_N
 ClientSampleId :

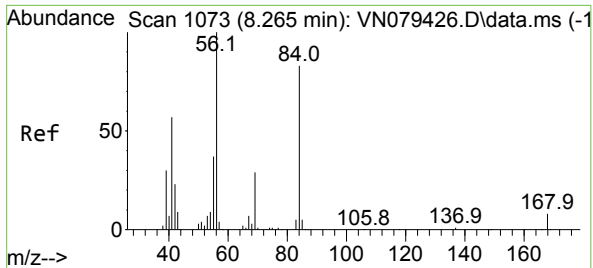
Tgt Ion: 43 Resp: 5083
 Ion Ratio Lower Upper
 43 100
 72 26.7 30.2 45.2#



#29
 Tetrahydrofuran
 Concen: 0.242 ug/l
 RT: 7.853 min Scan# 1003
 Delta R.T. 0.012 min
 Lab File: VN079448.D
 Acq: 06 Oct 2023 15:30

Tgt Ion: 42 Resp: 227
 Ion Ratio Lower Upper
 42 100
 72 0.0 49.8 74.6#
 71 24.7 47.4 71.2#

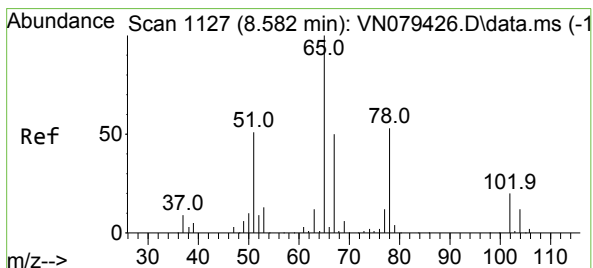
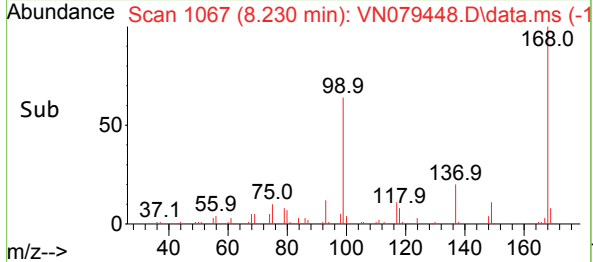
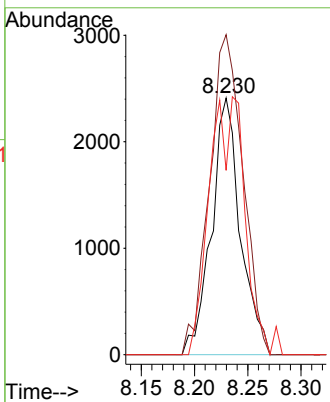
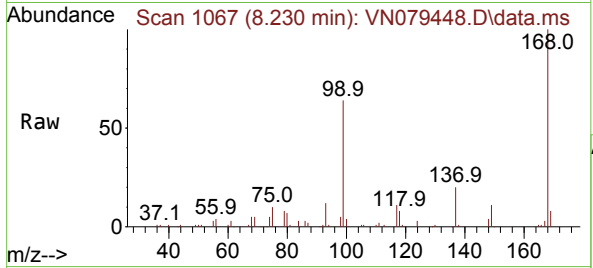




#31
 Cyclohexane
 Concen: 1.296 ug/l
 RT: 8.230 min Scan# 1067
 Delta R.T. -0.035 min
 Lab File: VN079448.D
 Acq: 06 Oct 2023 15:30

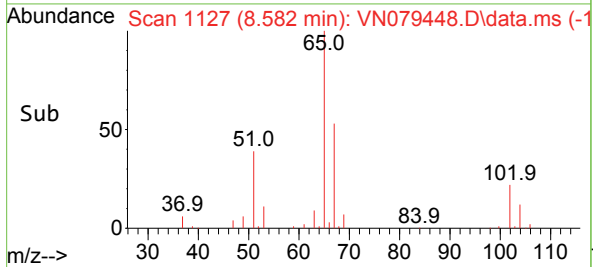
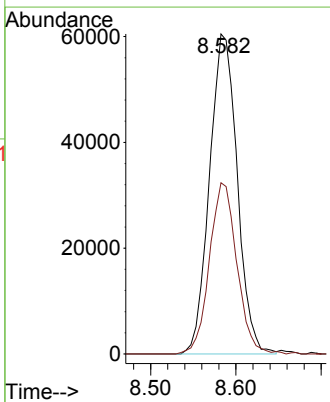
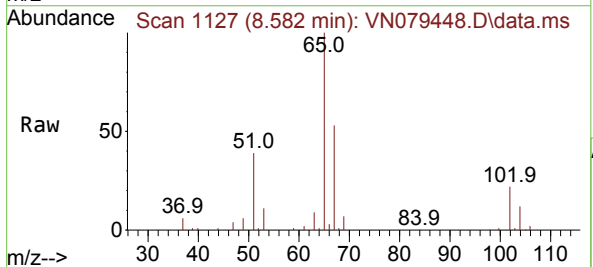
Instrument : MSVOA_N
 ClientSampleId :

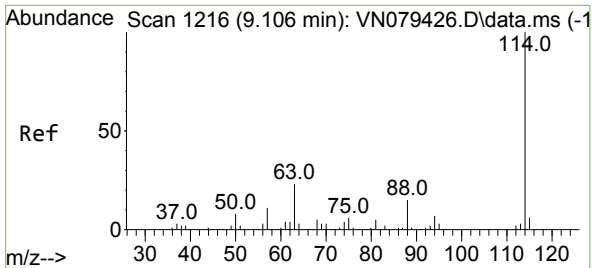
Tgt Ion	Resp	Lower	Upper
56	4534		
69	124.7	26.8	40.2#
84	71.8	81.8	122.6#



#33
 1,2-Dichloroethane-d4
 Concen: 55.442 ug/l
 RT: 8.582 min Scan# 1127
 Delta R.T. -0.000 min
 Lab File: VN079448.D
 Acq: 06 Oct 2023 15:30

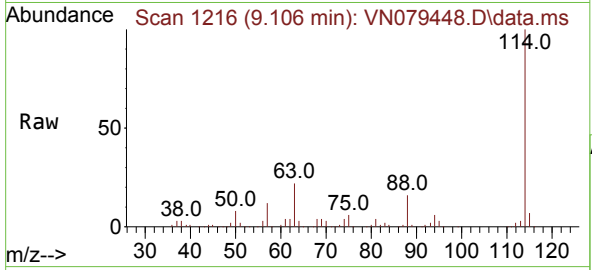
Tgt Ion	Resp	Lower	Upper
65	136697		
67	52.9	0.0	106.6





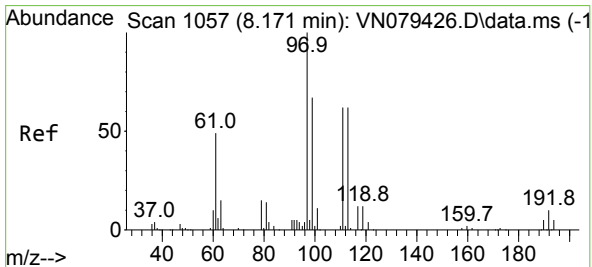
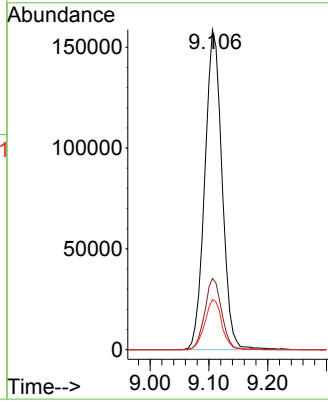
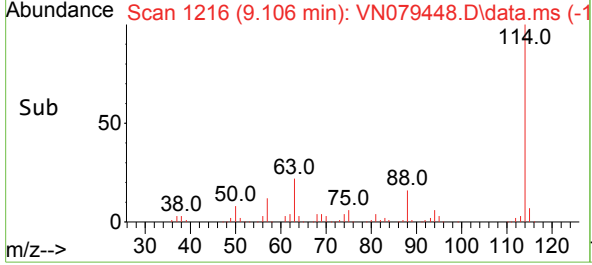
#34
 1,4-Difluorobenzene
 Concen: 50.000 ug/l
 RT: 9.106 min Scan# 11
 Delta R.T. -0.000 min
 Lab File: VN079448.D
 Acq: 06 Oct 2023 15:30

Instrument :
 MSVOA_N
 ClientSampleId :

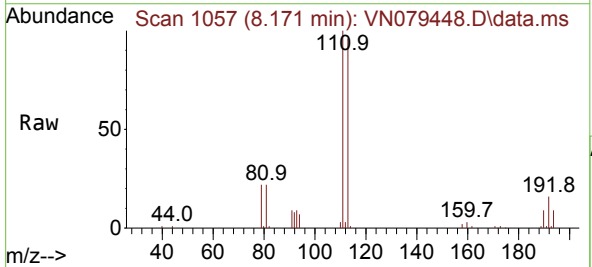


Tgt Ion:114 Resp: 322398

Ion	Ratio	Lower	Upper
114	100		
63	22.3	0.0	36.4
88	15.7	0.0	30.6

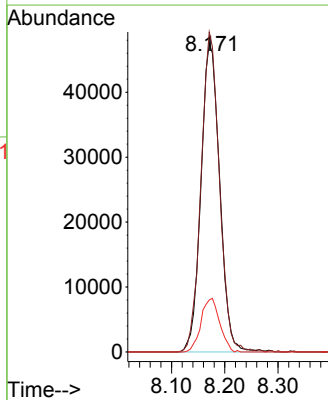
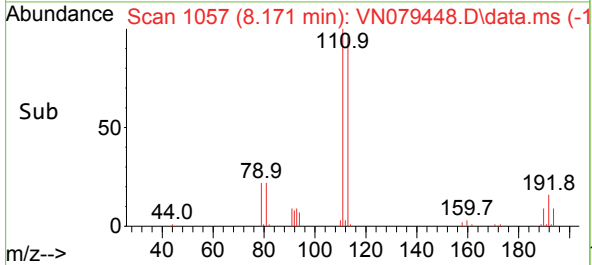


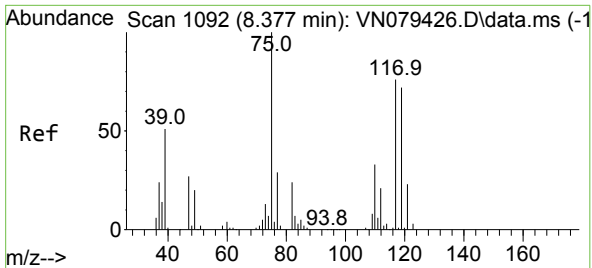
#35
 Dibromofluoromethane
 Concen: 50.253 ug/l
 RT: 8.171 min Scan# 1057
 Delta R.T. -0.000 min
 Lab File: VN079448.D
 Acq: 06 Oct 2023 15:30



Tgt Ion:113 Resp: 116430

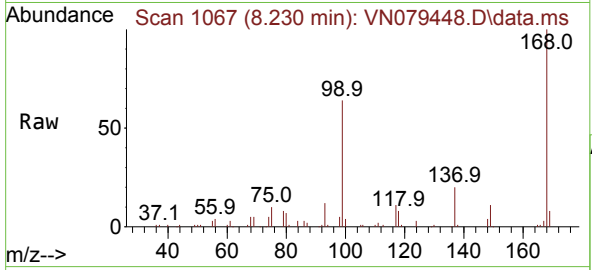
Ion	Ratio	Lower	Upper
113	100		
111	101.3	82.6	123.8
192	17.3	12.7	19.1



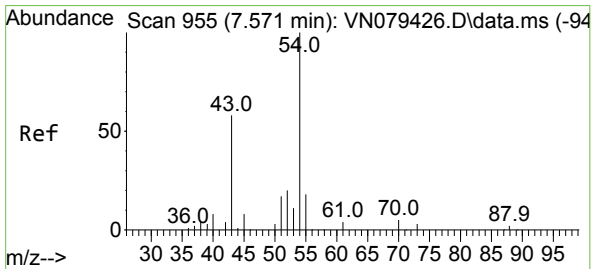
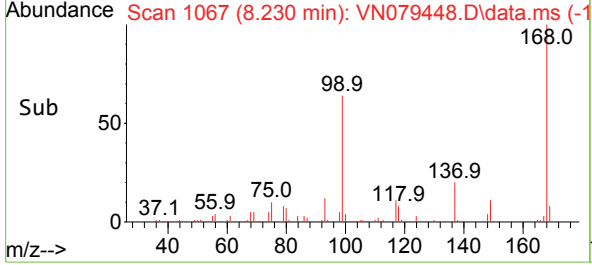
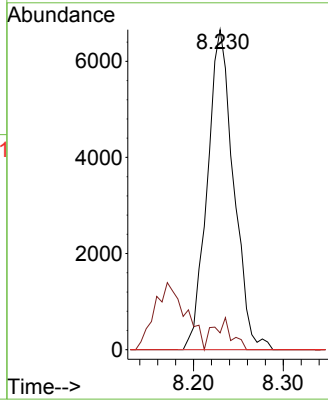


#36
 1,1-Dichloropropene
 Concen: 3.904 ug/l
 RT: 8.230 min Scan# 1092
 Delta R.T. -0.147 min
 Lab File: VN079448.D
 Acq: 06 Oct 2023 15:30

Instrument :
 MSVOA_N
 ClientSampleId :

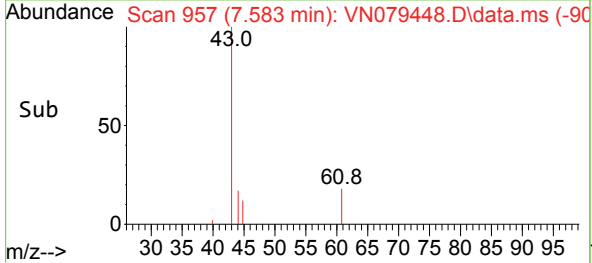
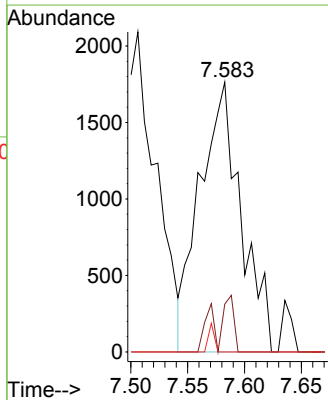
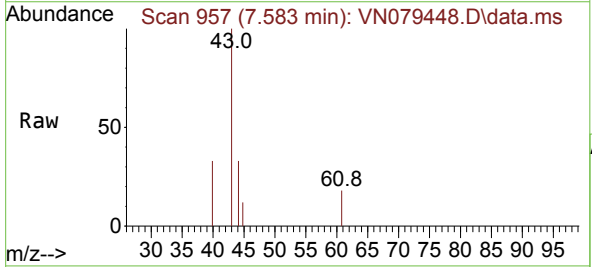


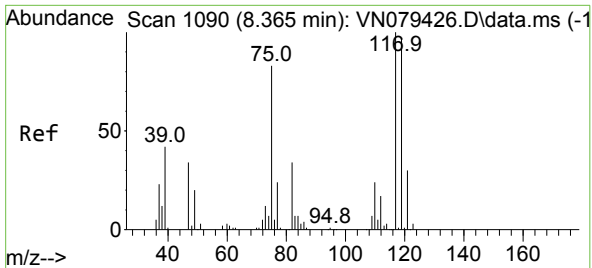
Tgt Ion: 75 Resp: 13576
 Ion Ratio Lower Upper
 75 100
 110 6.8 19.1 57.3#
 77 0.0 25.0 37.4#



#37
 Ethyl Acetate
 Concen: 1.288 ug/l
 RT: 7.583 min Scan# 957
 Delta R.T. 0.012 min
 Lab File: VN079448.D
 Acq: 06 Oct 2023 15:30

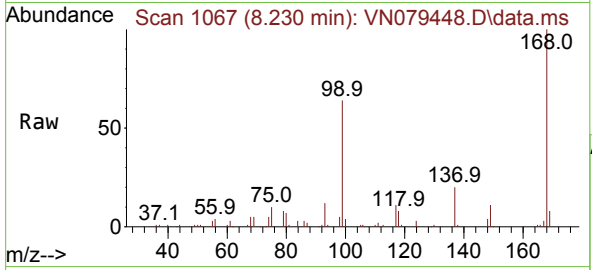
Tgt Ion: 43 Resp: 4455
 Ion Ratio Lower Upper
 43 100
 61 5.4 13.2 19.8#
 70 0.0 11.3 16.9#



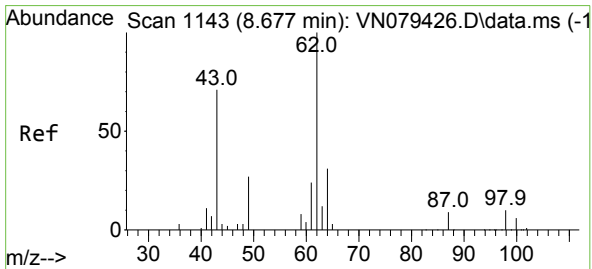
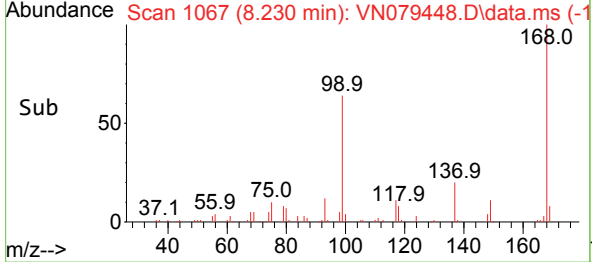
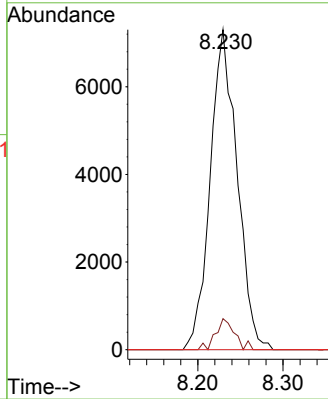


#38
 Carbon Tetrachloride
 Concen: 4.605 ug/l
 RT: 8.230 min Scan# 1067
 Delta R.T. -0.135 min
 Lab File: VN079448.D
 Acq: 06 Oct 2023 15:30

Instrument : MSVOA_N
 ClientSampleId :

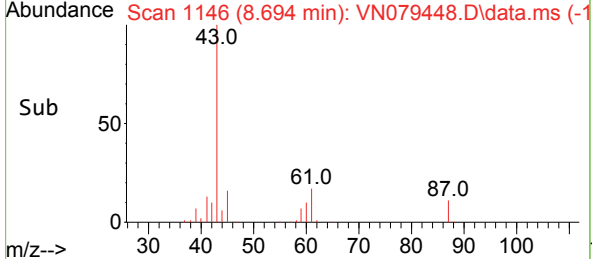
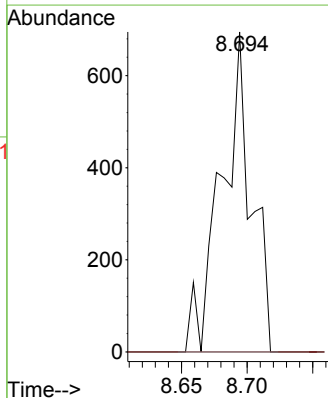
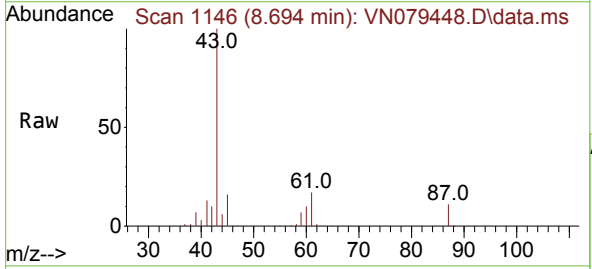


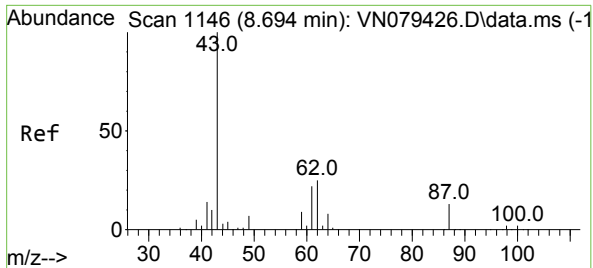
Tgt Ion:117 Resp: 16029
 Ion Ratio Lower Upper
 117 100
 119 9.7 77.3 115.9#
 121 0.0 23.3 34.9#



#42
 1,2-Dichloroethane
 Concen: 0.292 ug/l
 RT: 8.694 min Scan# 1146
 Delta R.T. 0.018 min
 Lab File: VN079448.D
 Acq: 06 Oct 2023 15:30

Tgt Ion: 62 Resp: 1097
 Ion Ratio Lower Upper
 62 100
 98 0.0 0.0 19.8



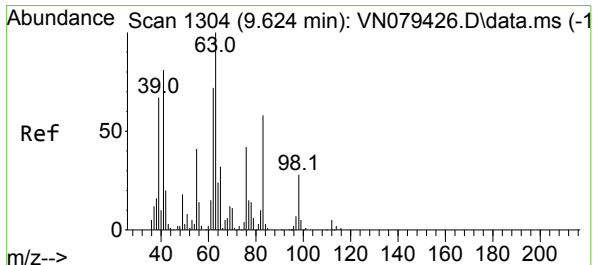
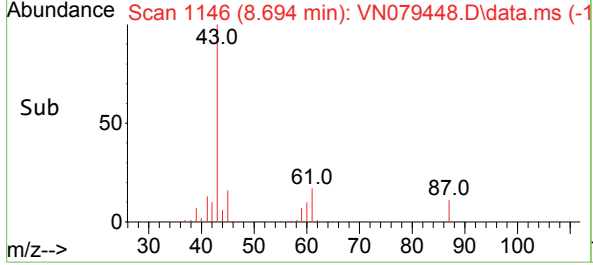
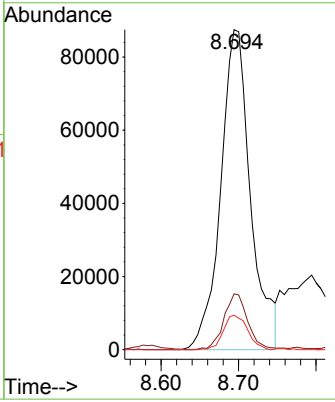
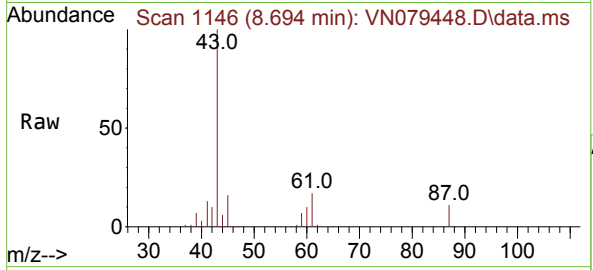


#43
 Isopropyl Acetate
 Concen: 38.737 ug/l
 RT: 8.694 min Scan# 1146
 Delta R.T. -0.000 min
 Lab File: VN079448.D
 Acq: 06 Oct 2023 15:30

Instrument : MSVOA_N
 ClientSampleId :

Tgt Ion: 43 Resp: 234820

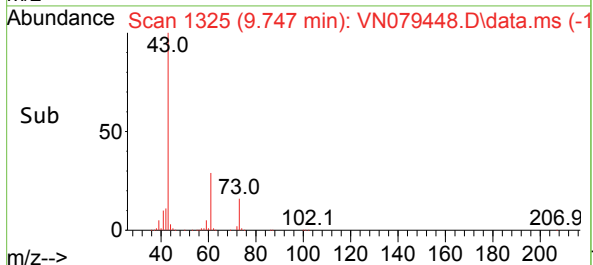
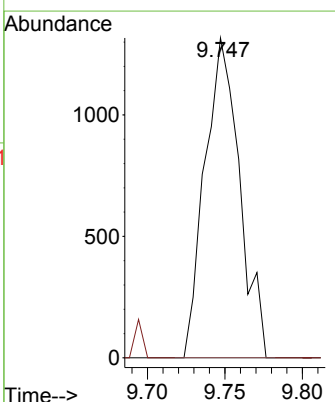
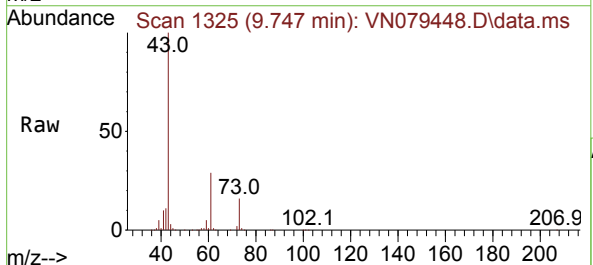
Ion	Ratio	Lower	Upper
43	100		
61	14.1	24.7	37.1#
87	8.8	14.6	21.8#

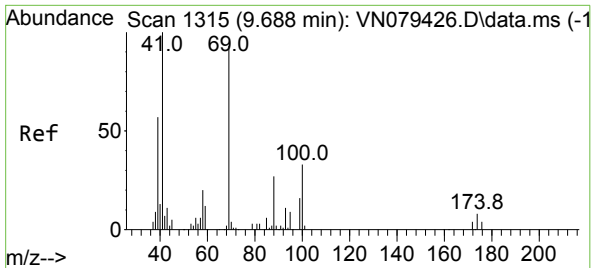


#45
 1,2-Dichloropropane
 Concen: 0.755 ug/l
 RT: 9.747 min Scan# 1325
 Delta R.T. 0.124 min
 Lab File: VN079448.D
 Acq: 06 Oct 2023 15:30

Tgt Ion: 63 Resp: 2053

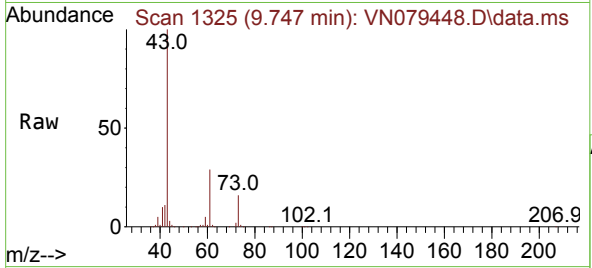
Ion	Ratio	Lower	Upper
63	100		
65	0.0	23.9	35.9#



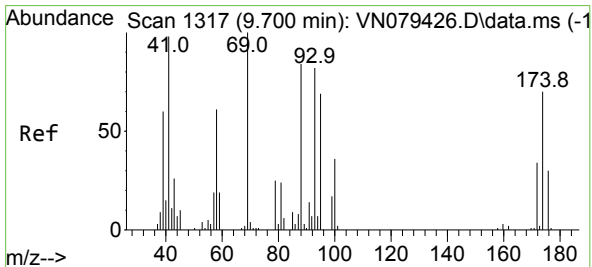
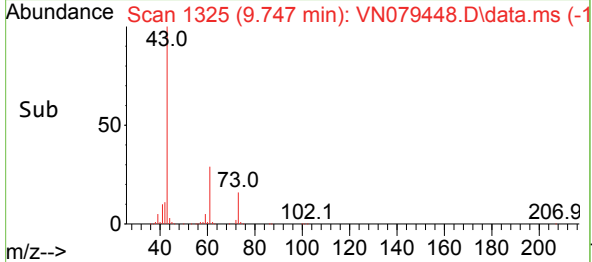
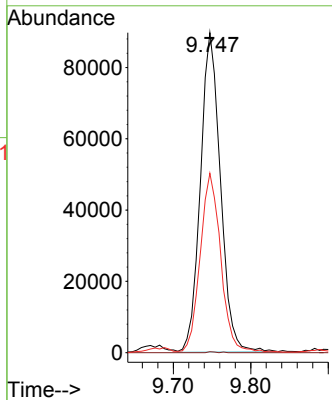


#48
 Methyl methacrylate
 Concen: 61.909 ug/l
 RT: 9.747 min Scan# 11
 Delta R.T. 0.059 min
 Lab File: VN079448.D
 Acq: 06 Oct 2023 15:30

Instrument :
 MSVOA_N
 ClientSampleId :

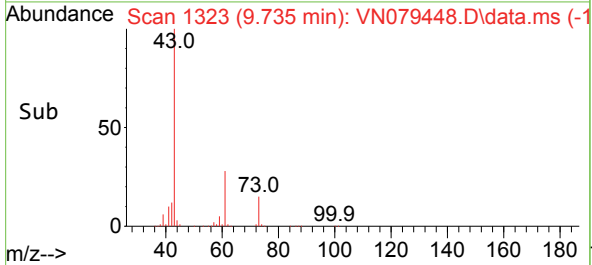
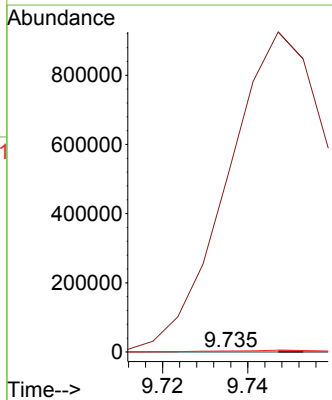
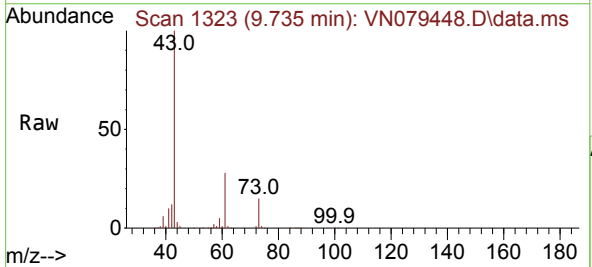


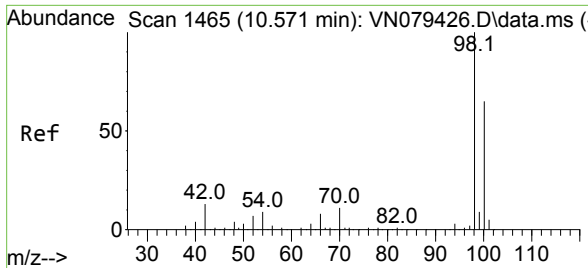
Tgt Ion: 41 Resp: 160816
 Ion Ratio Lower Upper
 41 100
 69 0.1 90.4 135.6#
 39 57.5 54.6 81.8



#49
 1,4-Dioxane
 Concen: 1.233 ug/l
 RT: 9.735 min Scan# 1323
 Delta R.T. 0.035 min
 Lab File: VN079448.D
 Acq: 06 Oct 2023 15:30

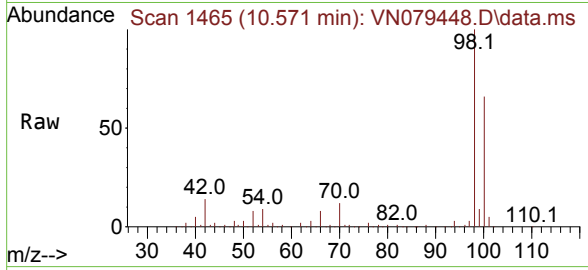
Tgt Ion: 88 Resp: 59
 Ion Ratio Lower Upper
 88 100
 43 2793901.7 17.0 25.6#
 58 15359.3 47.0 70.4#



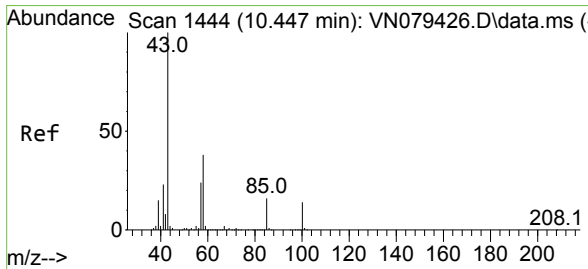
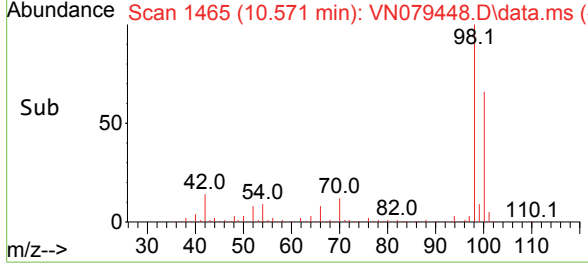
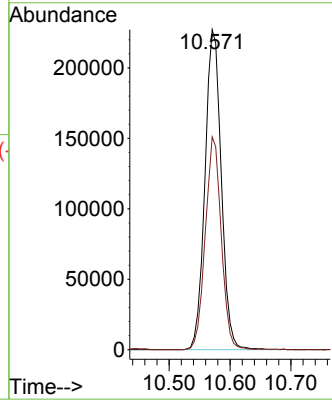


#50
 Toluene-d8
 Concen: 50.371 ug/l
 RT: 10.571 min Scan# 1465
 Delta R.T. -0.000 min
 Lab File: VN079448.D
 Acq: 06 Oct 2023 15:30

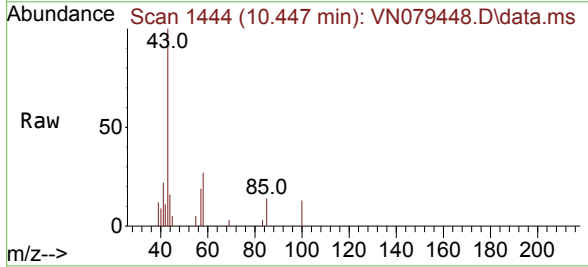
Instrument : MSVOA_N
 ClientSampleId :



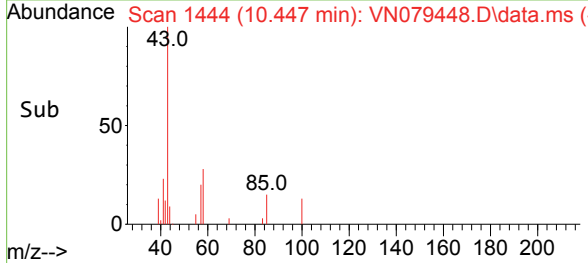
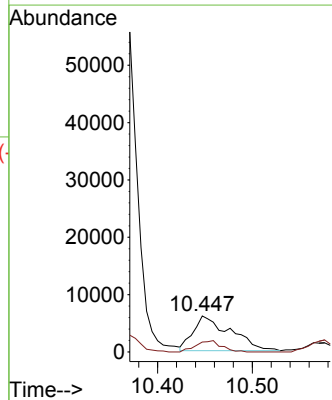
Tgt Ion: 98 Resp: 422263
 Ion Ratio Lower Upper
 98 100
 100 65.1 52.0 78.0

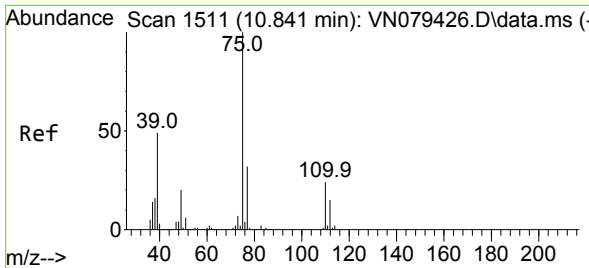


#51
 4-Methyl-2-Pentanone
 Concen: 4.835 ug/l
 RT: 10.447 min Scan# 1444
 Delta R.T. 0.000 min
 Lab File: VN079448.D
 Acq: 06 Oct 2023 15:30



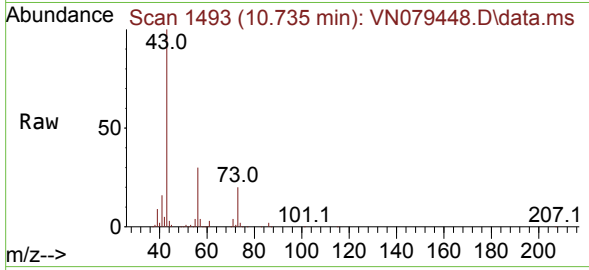
Tgt Ion: 43 Resp: 16546
 Ion Ratio Lower Upper
 43 100
 58 22.3 36.6 54.8#



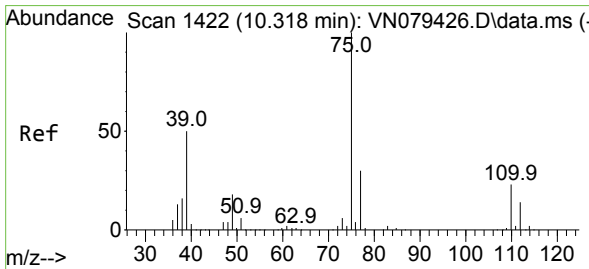
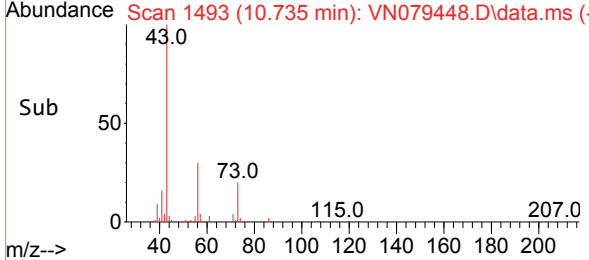
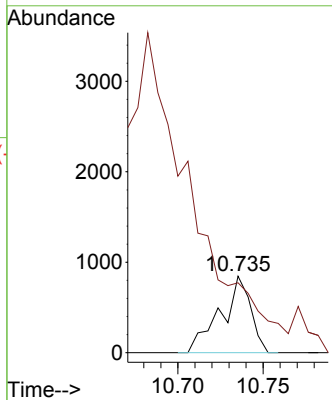


#53
 t-1,3-Dichloropropene
 Concen: 0.284 ug/l
 RT: 10.735 min Scan# 1430
 Delta R.T. -0.106 min
 Lab File: VN079448.D
 Acq: 06 Oct 2023 15:30

Instrument : MSVOA_N
 ClientSampleId :

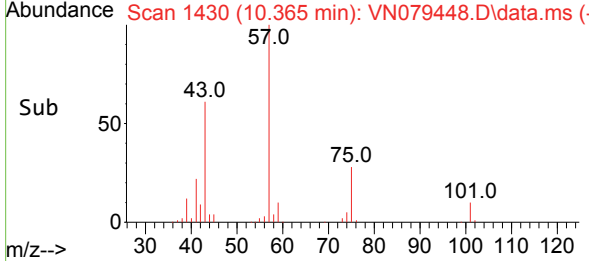
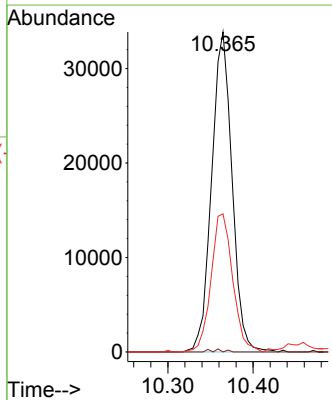
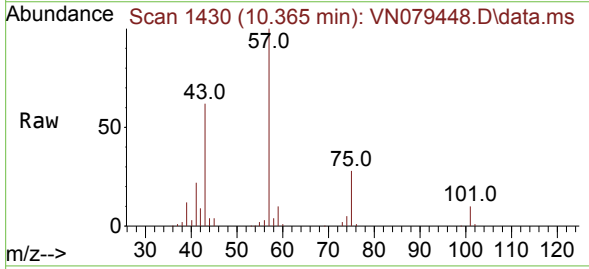


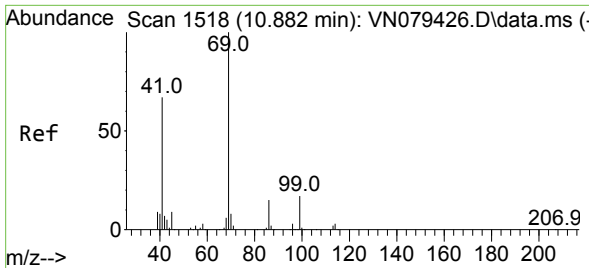
Tgt Ion: 75 Resp: 1036
 Ion Ratio Lower Upper
 75 100
 77 53.1 25.4 38.0#



#54
 cis-1,3-Dichloropropene
 Concen: 14.081 ug/l
 RT: 10.365 min Scan# 1430
 Delta R.T. 0.047 min
 Lab File: VN079448.D
 Acq: 06 Oct 2023 15:30

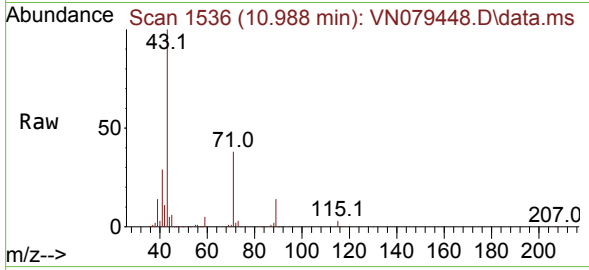
Tgt Ion: 75 Resp: 56311
 Ion Ratio Lower Upper
 75 100
 77 0.0 26.1 39.1#
 39 43.2 31.6 47.4



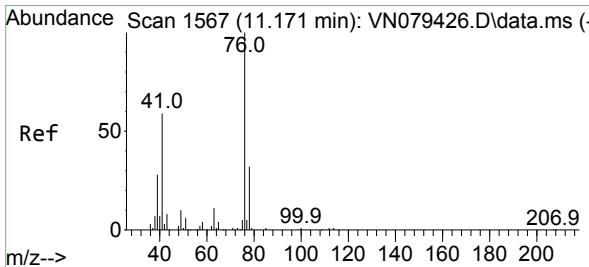
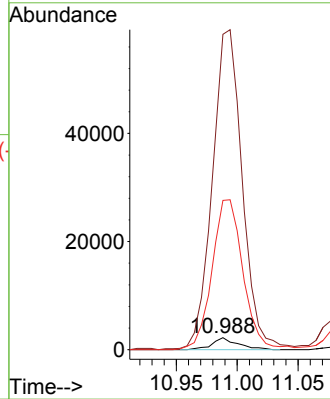
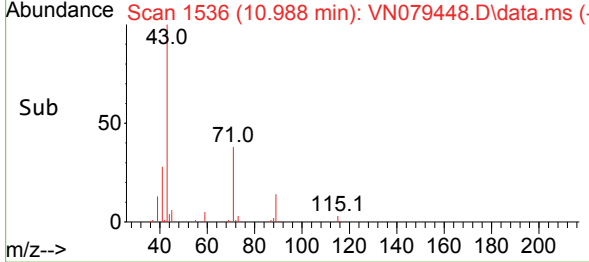


#56
 Ethyl methacrylate
 Concen: 0.965 ug/l
 RT: 10.988 min Scan# 1536
 Delta R.T. 0.106 min
 Lab File: VN079448.D
 Acq: 06 Oct 2023 15:30

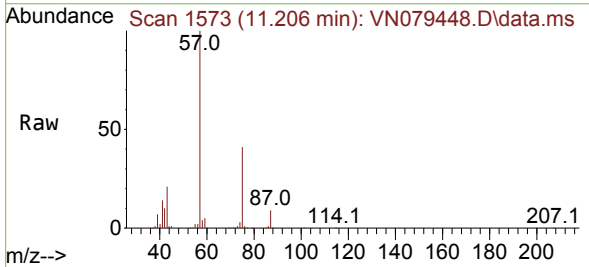
Instrument :
 MSVOA_N
 ClientSampleId :



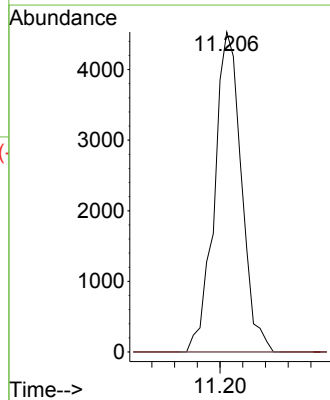
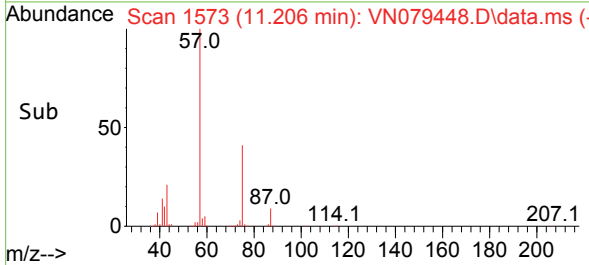
Tgt Ion: 69 Resp: 3235
 Ion Ratio Lower Upper
 69 100
 41 3137.0 39.6 59.4#
 39 1518.4 28.6 43.0#

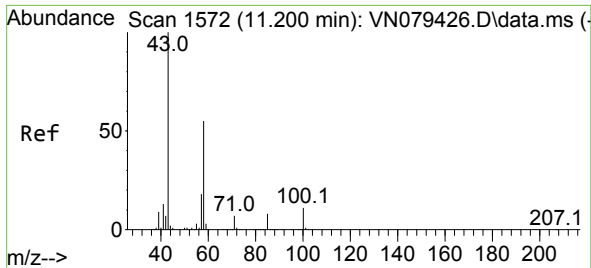


#57
 1,3-Dichloropropane
 Concen: 1.775 ug/l
 RT: 11.206 min Scan# 1573
 Delta R.T. 0.035 min
 Lab File: VN079448.D
 Acq: 06 Oct 2023 15:30



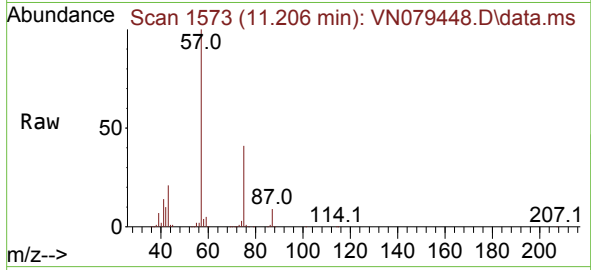
Tgt Ion: 76 Resp: 7478
 Ion Ratio Lower Upper
 76 100
 78 0.0 26.1 39.1#



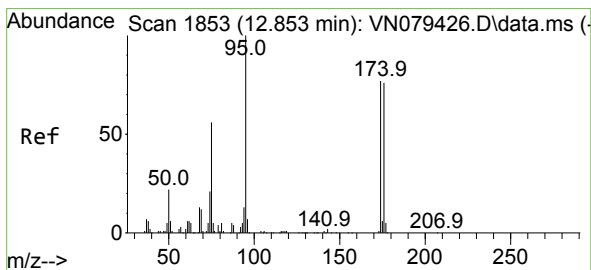
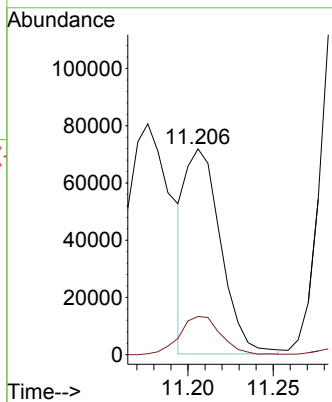
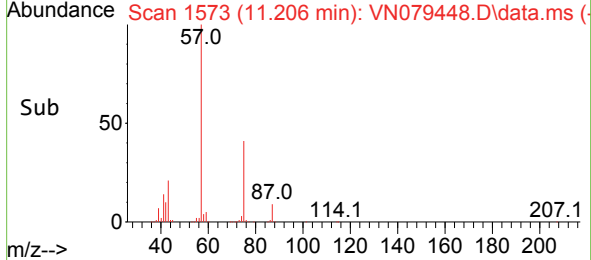


#59
 2-Hexanone
 Concen: 41.738 ug/l
 RT: 11.206 min Scan# 111
 Delta R.T. 0.006 min
 Lab File: VN079448.D
 Acq: 06 Oct 2023 15:30

Instrument :
 MSVOA_N
 ClientSampleId :

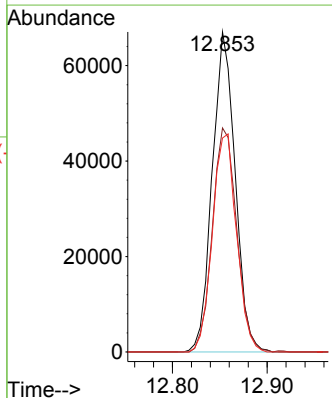
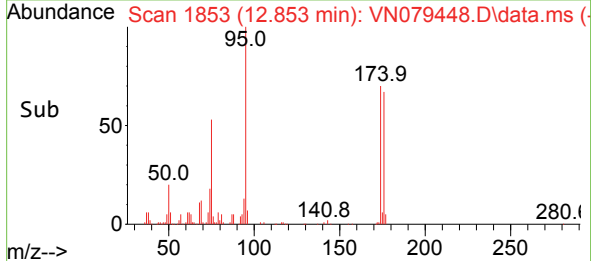
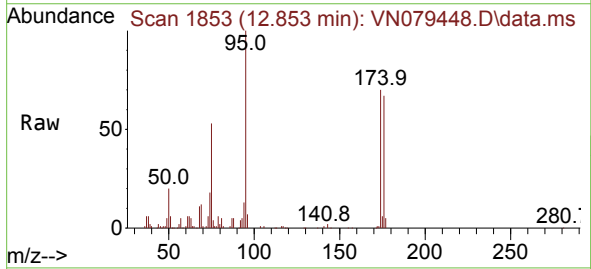


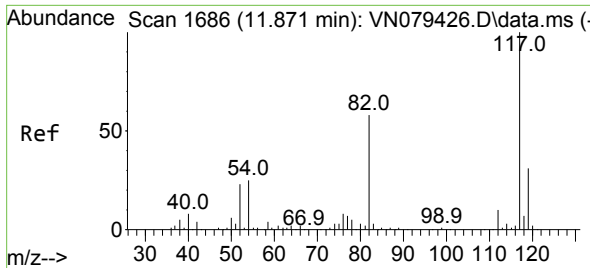
Tgt Ion: 43 Resp: 103063
 Ion Ratio Lower Upper
 43 100
 58 22.0 31.7 95.1#



#62
 4-Bromofluorobenzene
 Concen: 41.837 ug/l
 RT: 12.853 min Scan# 1853
 Delta R.T. -0.000 min
 Lab File: VN079448.D
 Acq: 06 Oct 2023 15:30

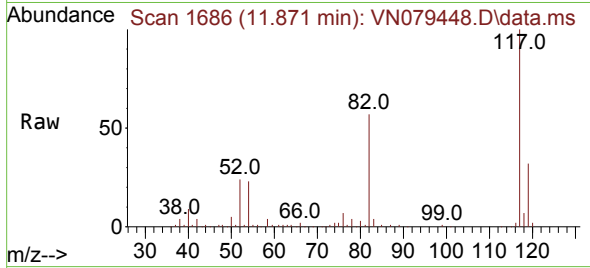
Tgt Ion: 95 Resp: 112554
 Ion Ratio Lower Upper
 95 100
 174 74.6 0.0 143.8
 176 71.8 0.0 135.8



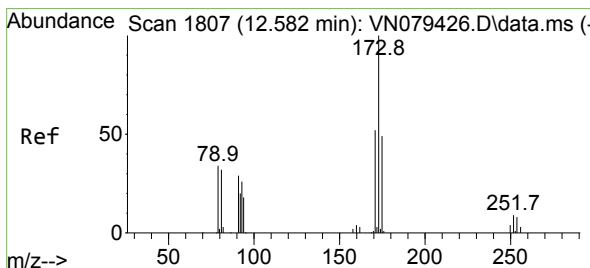
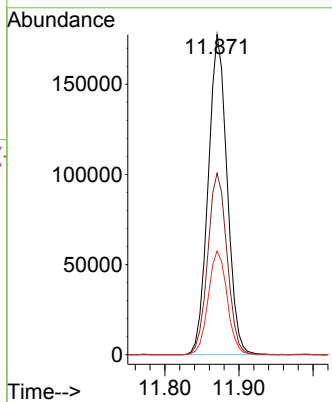
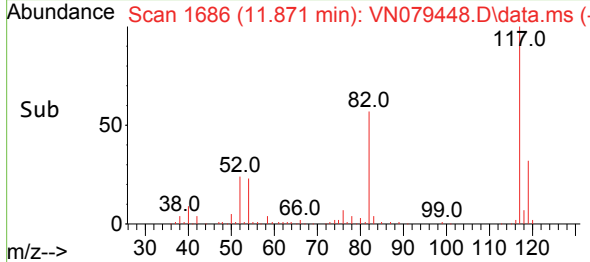


#63
 Chlorobenzene-d5
 Concen: 50.000 ug/l
 RT: 11.871 min Scan# 117
 Delta R.T. -0.000 min
 Lab File: VN079448.D
 Acq: 06 Oct 2023 15:30

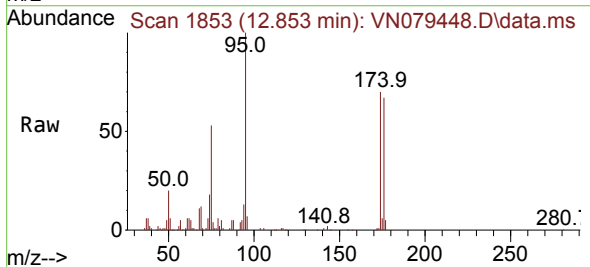
Instrument : MSVOA_N
 ClientSampleId :



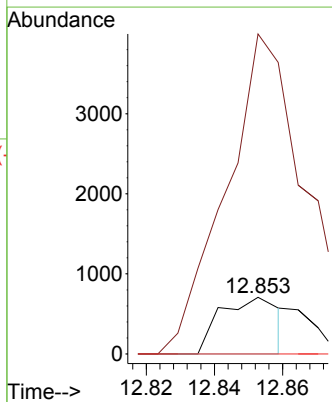
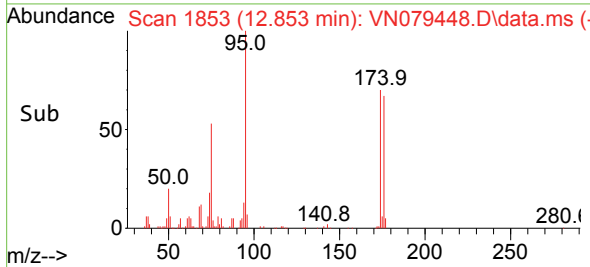
Tgt Ion:117 Resp: 314619
 Ion Ratio Lower Upper
 117 100
 82 56.7 44.0 66.0
 119 32.4 25.6 38.4

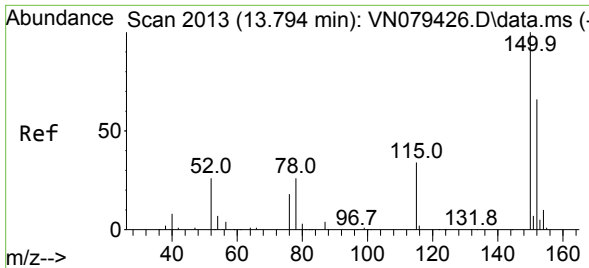


#71
 Bromoform
 Concen: 0.454 ug/l
 RT: 12.853 min Scan# 1853
 Delta R.T. 0.271 min
 Lab File: VN079448.D
 Acq: 06 Oct 2023 15:30



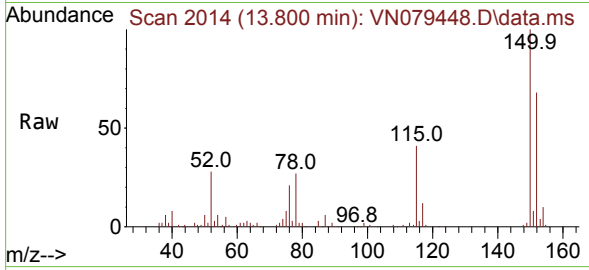
Tgt Ion:173 Resp: 852
 Ion Ratio Lower Upper
 173 100
 175 544.8 24.3 73.0#
 254 0.0 0.0 0.0



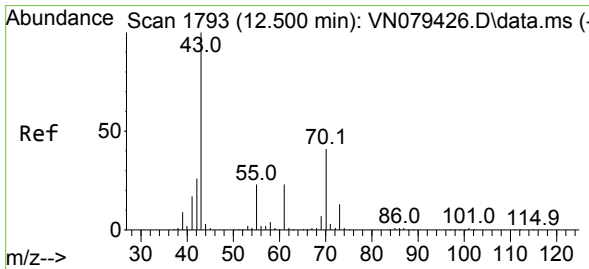
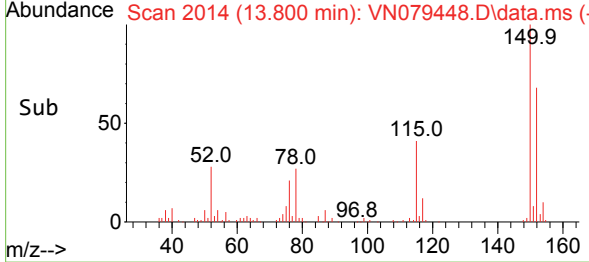
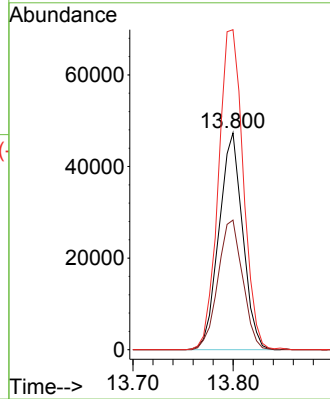


#72
 1,4-Dichlorobenzene-d4
 Concen: 50.000 ug/l
 RT: 13.800 min Scan# 20
 Delta R.T. 0.006 min
 Lab File: VN079448.D
 Acq: 06 Oct 2023 15:30

Instrument : MSVOA_N
 ClientSampleId :

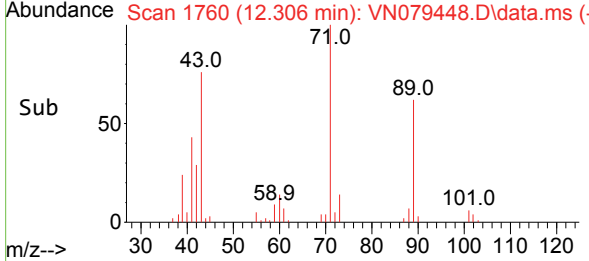
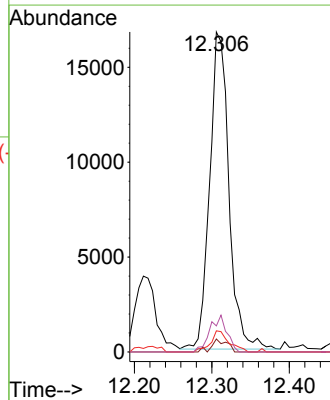
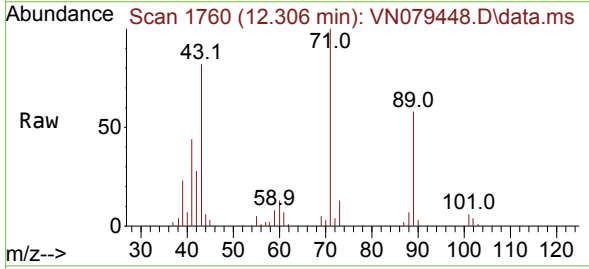


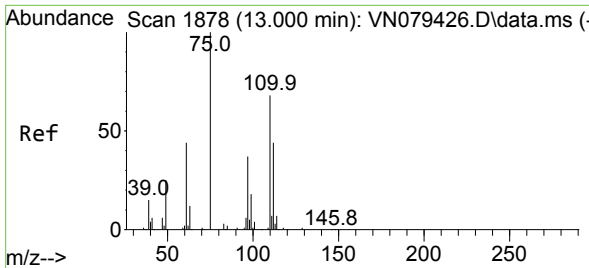
Tgt Ion:152 Resp: 77620
 Ion Ratio Lower Upper
 152 100
 115 62.3 32.3 96.8
 150 154.7 0.0 355.8



#74
 N-amy1 acetate
 Concen: 9.750 ug/l
 RT: 12.306 min Scan# 1760
 Delta R.T. -0.194 min
 Lab File: VN079448.D
 Acq: 06 Oct 2023 15:30

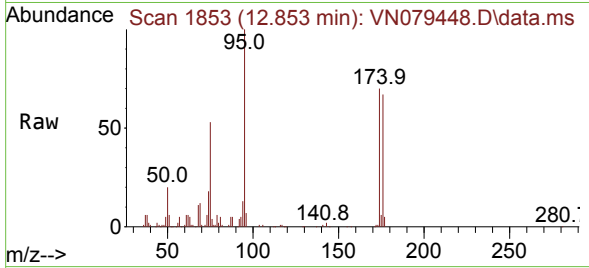
Tgt Ion: 43 Resp: 28863
 Ion Ratio Lower Upper
 43 100
 70 3.2 43.4 65.2#
 55 6.4 21.4 32.0#
 61 10.2 22.8 34.2#



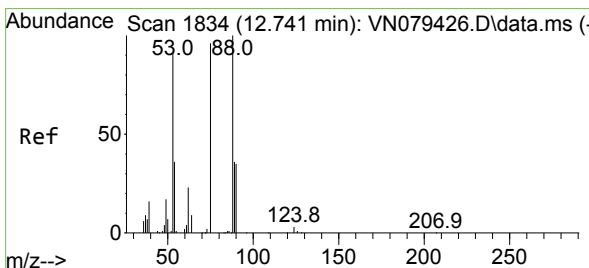
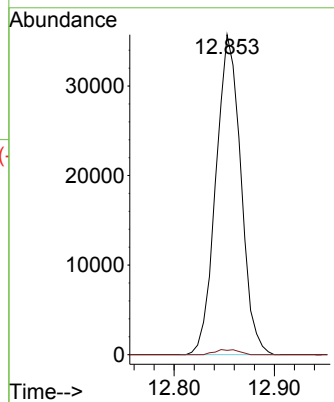
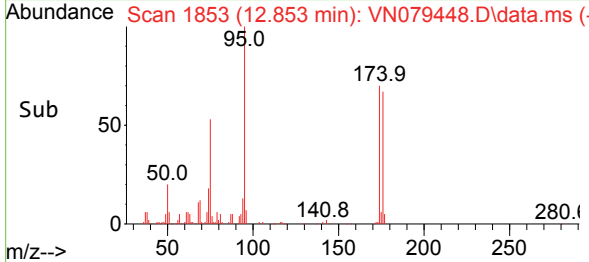


#76
 1,2,3-Trichloropropane
 Concen: 27.584 ug/l
 RT: 12.853 min Scan# 1853
 Delta R.T. -0.147 min
 Lab File: VN079448.D
 Acq: 06 Oct 2023 15:30

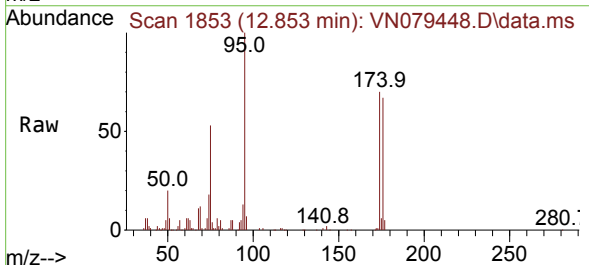
Instrument : MSVOA_N
 ClientSampleId :



Tgt Ion: 75 Resp: 61732
 Ion Ratio Lower Upper
 75 100
 77 1.5 84.5 253.5#



#81
 trans-1,4-Dichloro-2-butene
 Concen: 80.035 ug/l
 RT: 12.853 min Scan# 1853
 Delta R.T. 0.112 min
 Lab File: VN079448.D
 Acq: 06 Oct 2023 15:30



Tgt Ion: 75 Resp: 61732
 Ion Ratio Lower Upper
 75 100
 53 0.1 67.4 101.2#
 89 0.0 38.8 58.2#

