

Data Path : Z:\voasrv\HPCHEM1\MSVOA_N\Data\VN100623\
 Data File : VN079454.D
 Acq On : 06 Oct 2023 17:56
 Operator : JC\MD
 Sample : 04731-03
 Misc : 5.0mL/MSVOA_N/WATER
 ALS Vial : 23 Sample Multiplier: 1

Instrument :
 MSVOA_N
 ClientSampleId :
 DTP-1

Quant Time: Oct 06 23:06:56 2023
 Quant Method : Z:\voasrv\HPCHEM1\MSVOA_N\methods\82N100523W.M
 Quant Title : SW846 8260
 QLast Update : Fri Oct 06 03:34:49 2023
 Response via : Initial Calibration

Compound	R.T.	QIon	Response	Conc	Units	Dev(Min)

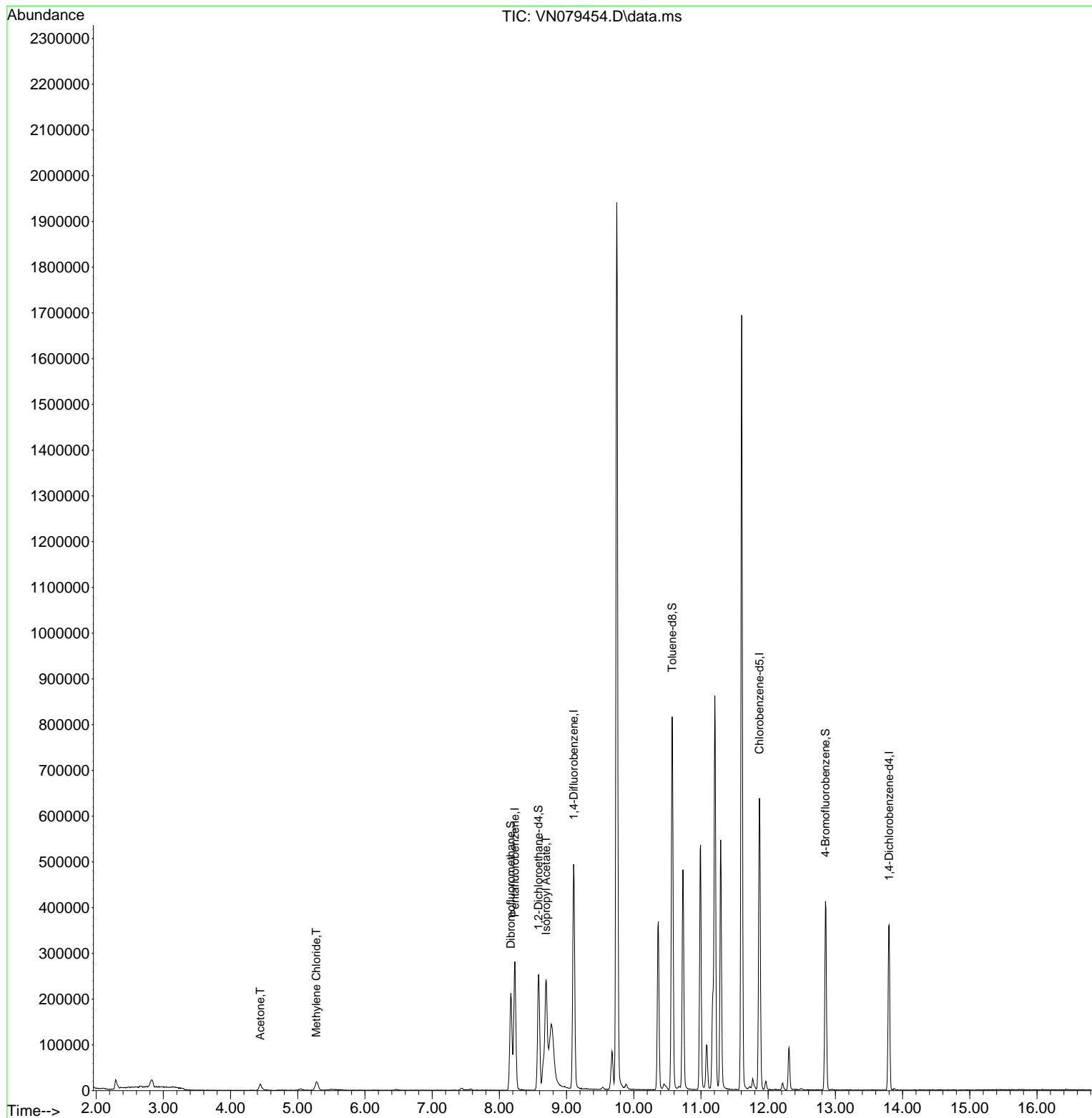
Internal Standards						
1) Pentafluorobenzene	8.229	168	186340	50.000	ug/l	0.00
34) 1,4-Difluorobenzene	9.106	114	404827	50.000	ug/l	0.00
63) Chlorobenzene-d5	11.870	117	361590	50.000	ug/l	0.00
72) 1,4-Dichlorobenzene-d4	13.800	152	94536	50.000	ug/l	0.00
System Monitoring Compounds						
33) 1,2-Dichloroethane-d4	8.582	65	206626	68.388	ug/l	0.00
Spiked Amount	50.000	Range	74 - 125	Recovery	=	136.780%#
35) Dibromofluoromethane	8.171	113	148820	51.154	ug/l	0.00
Spiked Amount	50.000	Range	75 - 124	Recovery	=	102.300%
50) Toluene-d8	10.570	98	541082	51.402	ug/l	0.00
Spiked Amount	50.000	Range	86 - 113	Recovery	=	102.800%
62) 4-Bromofluorobenzene	12.853	95	136946	40.539	ug/l	0.00
Spiked Amount	50.000	Range	83 - 123	Recovery	=	81.080%#
Target Compounds						
					Qvalue	
16) Acetone	4.441	43	23518	19.625	ug/l #	87
20) Methylene Chloride	5.277	84	15152	5.235	ug/l #	84
43) Isopropyl Acetate	8.694	43	327626	43.042	ug/l #	69

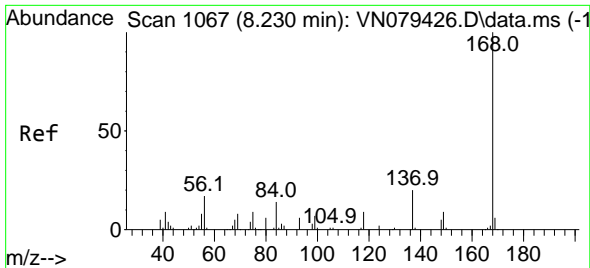
(#) = qualifier out of range (m) = manual integration (+) = signals summed

Data Path : Z:\voasrv\HPCHEM1\MSVOA_N\Data\VN100623\
 Data File : VN079454.D
 Acq On : 06 Oct 2023 17:56
 Operator : JC\MD
 Sample : 04731-03
 Misc : 5.0mL/MSVOA_N/WATER
 ALS Vial : 23 Sample Multiplier: 1

Instrument :
 MSVOA_N
 ClientSampleId :
 DTP-1

Quant Time: Oct 06 23:06:56 2023
 Quant Method : Z:\voasrv\HPCHEM1\MSVOA_N\methods\82N100523W.M
 Quant Title : SW846 8260
 QLast Update : Fri Oct 06 03:34:49 2023
 Response via : Initial Calibration

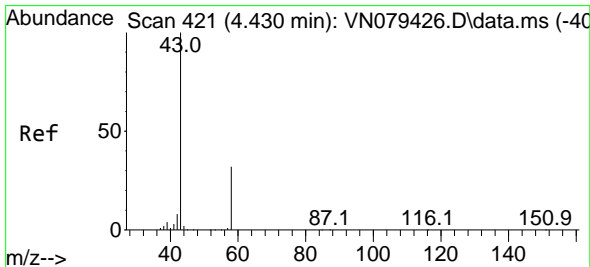
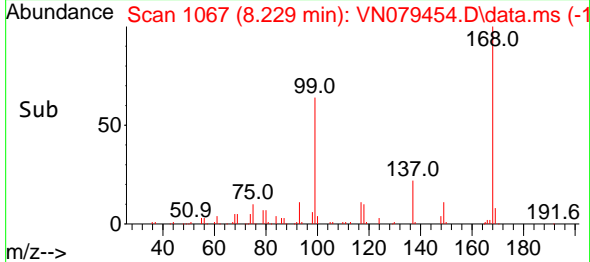
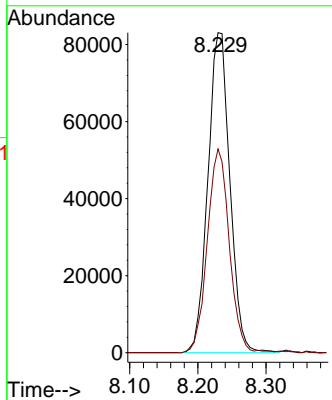
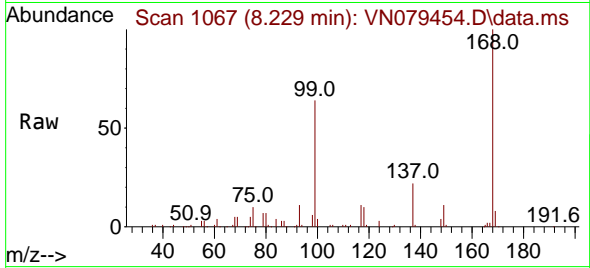




#1
 Pentafluorobenzene
 Concen: 50.000 ug/l
 RT: 8.229 min Scan# 1067
 Delta R.T. -0.001 min
 Lab File: VN079454.D
 Acq: 06 Oct 2023 17:56

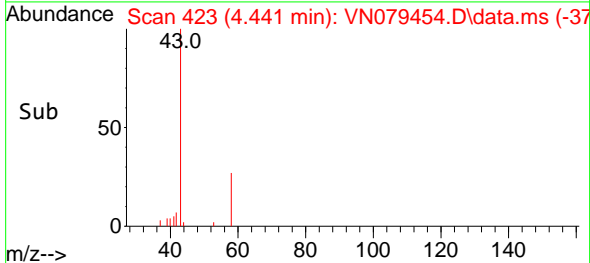
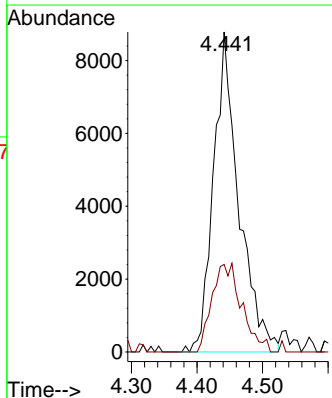
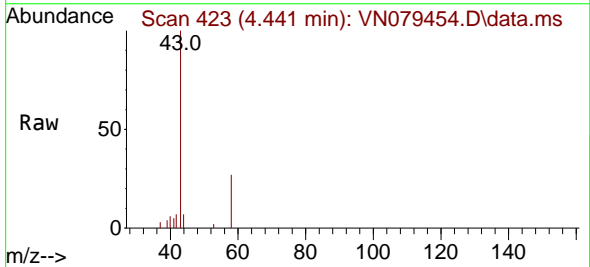
Instrument : MSVOA_N
 ClientSampleId : DTP-1

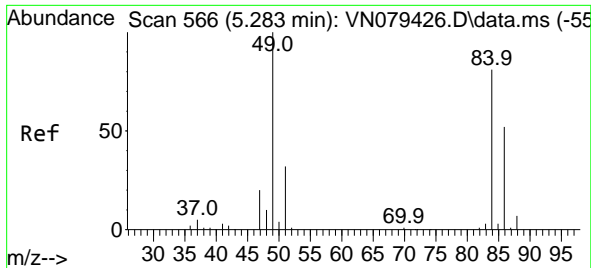
Tgt Ion:168 Resp: 186340
 Ion Ratio Lower Upper
 168 100
 99 63.7 53.0 79.6



#16
 Acetone
 Concen: 19.625 ug/l
 RT: 4.441 min Scan# 423
 Delta R.T. 0.011 min
 Lab File: VN079454.D
 Acq: 06 Oct 2023 17:56

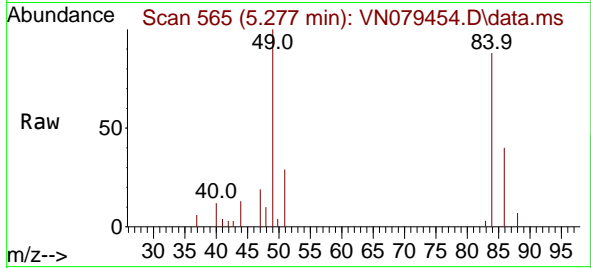
Tgt Ion: 43 Resp: 23518
 Ion Ratio Lower Upper
 43 100
 58 27.3 28.0 42.0#





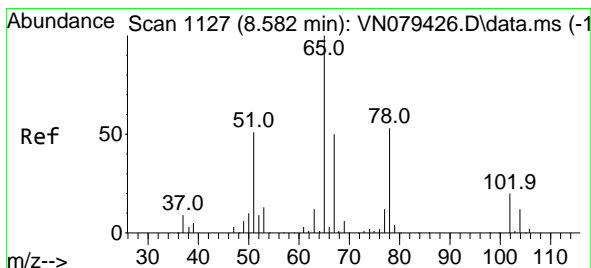
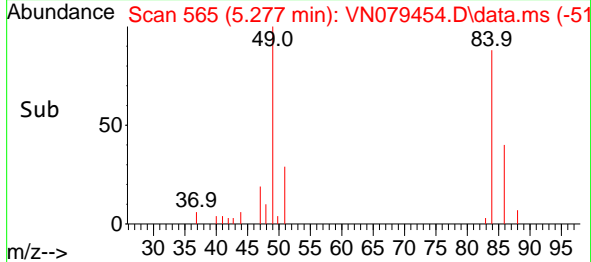
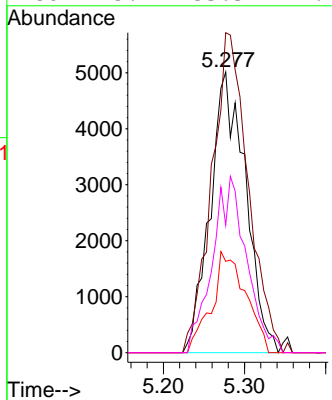
#20
 Methylene Chloride
 Concen: 5.235 ug/l
 RT: 5.277 min Scan# 51
 Delta R.T. -0.006 min
 Lab File: VN079454.D
 Acq: 06 Oct 2023 17:56

Instrument :
 MSVOA_N
 ClientSampleId :
 DTP-1



Tgt Ion: 84 Resp: 15152

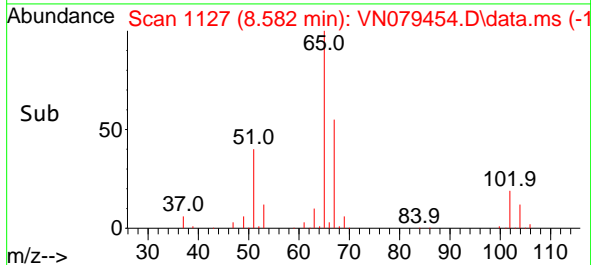
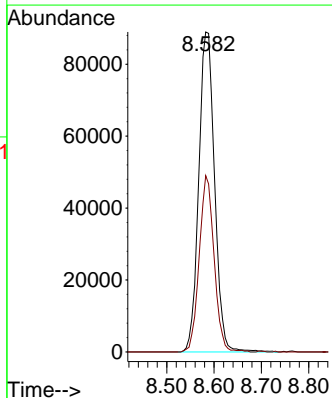
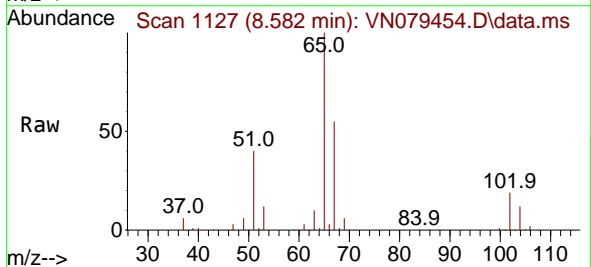
Ion	Ratio	Lower	Upper
84	100		
49	114.0	79.7	119.5
51	32.6	25.2	37.8
86	45.4	53.3	79.9#

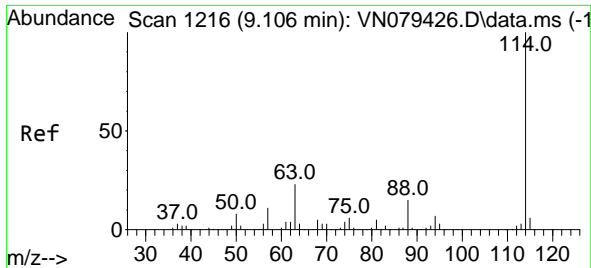


#33
 1,2-Dichloroethane-d4
 Concen: 68.388 ug/l
 RT: 8.582 min Scan# 1127
 Delta R.T. -0.000 min
 Lab File: VN079454.D
 Acq: 06 Oct 2023 17:56

Tgt Ion: 65 Resp: 206626

Ion	Ratio	Lower	Upper
65	100		
67	51.7	0.0	106.6



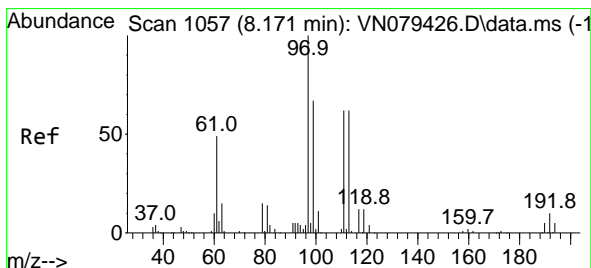
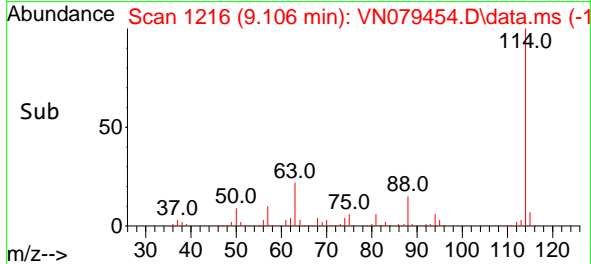
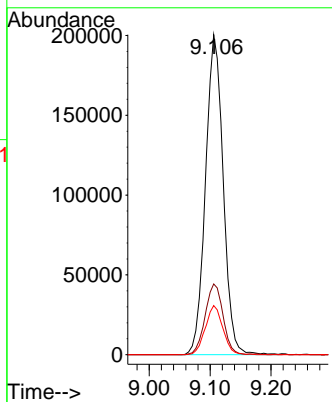
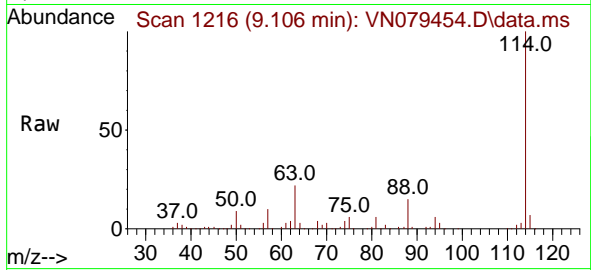


#34
 1,4-Difluorobenzene
 Concen: 50.000 ug/l
 RT: 9.106 min Scan# 11
 Delta R.T. -0.000 min
 Lab File: VN079454.D
 Acq: 06 Oct 2023 17:56

Instrument : MSVOA_N
 ClientSampleId : DTP-1

Tgt Ion:114 Resp: 404827

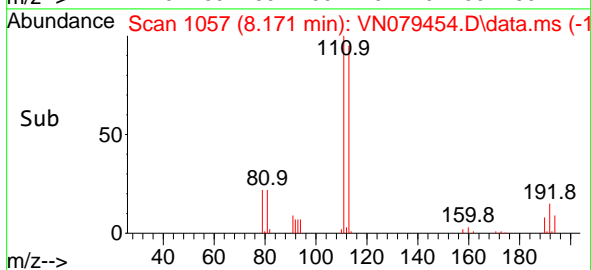
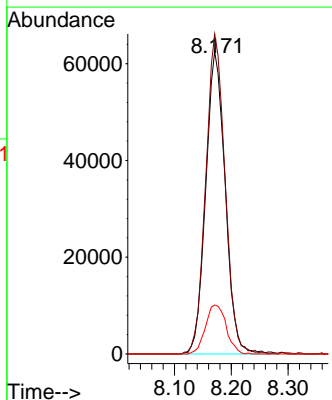
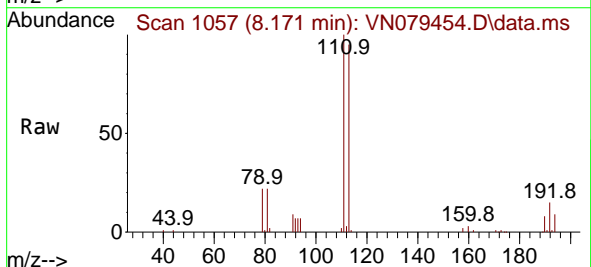
Ion	Ratio	Lower	Upper
114	100		
63	22.1	0.0	36.4
88	15.4	0.0	30.6

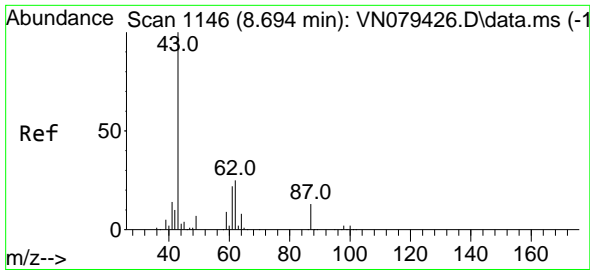


#35
 Dibromofluoromethane
 Concen: 51.154 ug/l
 RT: 8.171 min Scan# 1057
 Delta R.T. -0.000 min
 Lab File: VN079454.D
 Acq: 06 Oct 2023 17:56

Tgt Ion:113 Resp: 148820

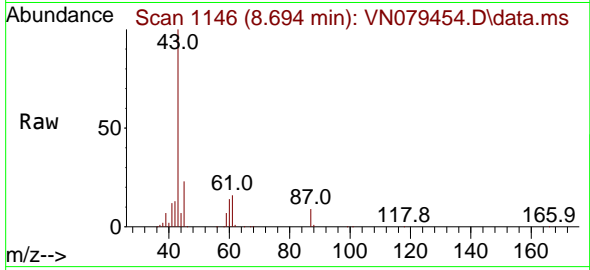
Ion	Ratio	Lower	Upper
113	100		
111	104.9	82.6	123.8
192	17.2	12.7	19.1



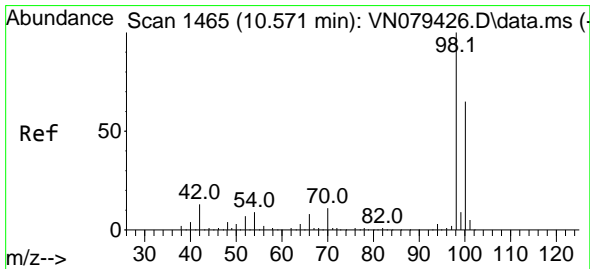
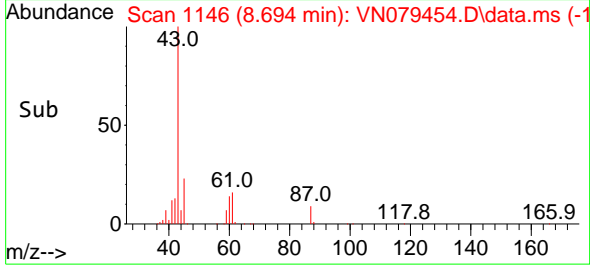
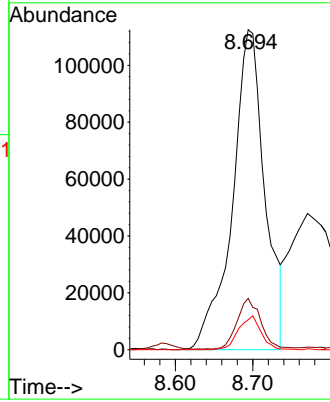


#43
 Isopropyl Acetate
 Concen: 43.042 ug/l
 RT: 8.694 min Scan# 1146
 Delta R.T. -0.000 min
 Lab File: VN079454.D
 Acq: 06 Oct 2023 17:56

Instrument : MSVOA_N
 ClientSampleId : DTP-1

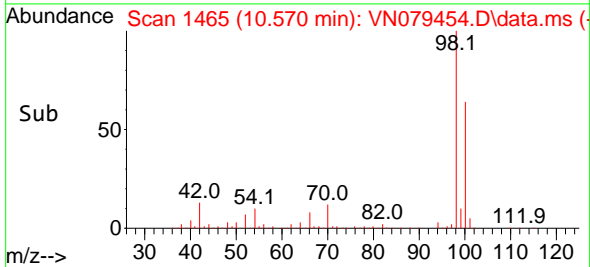
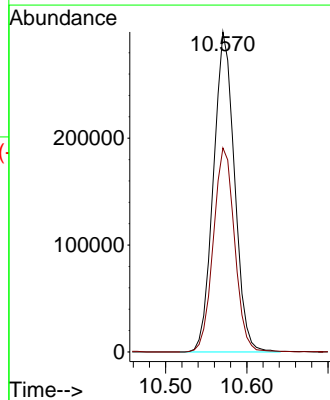
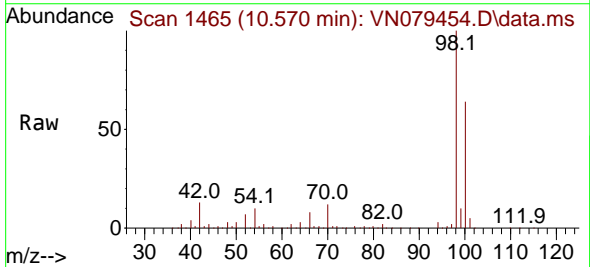


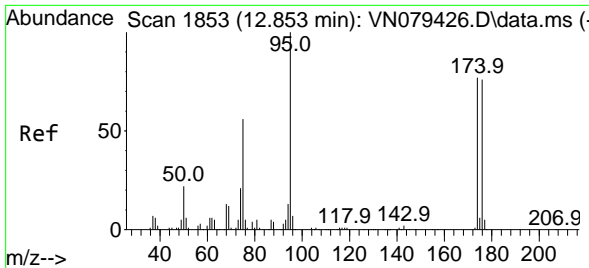
Tgt Ion: 43 Resp: 327626
 Ion Ratio Lower Upper
 43 100
 61 11.7 24.7 37.1#
 87 7.3 14.6 21.8#



#50
 Toluene-d8
 Concen: 51.402 ug/l
 RT: 10.570 min Scan# 1465
 Delta R.T. -0.000 min
 Lab File: VN079454.D
 Acq: 06 Oct 2023 17:56

Tgt Ion: 98 Resp: 541082
 Ion Ratio Lower Upper
 98 100
 100 64.4 52.0 78.0



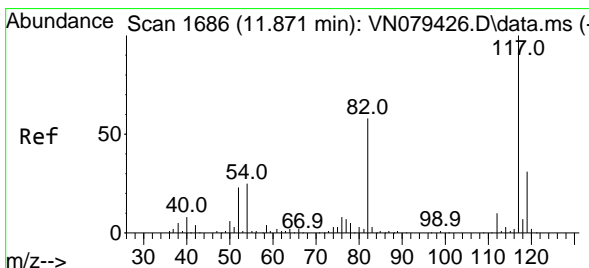
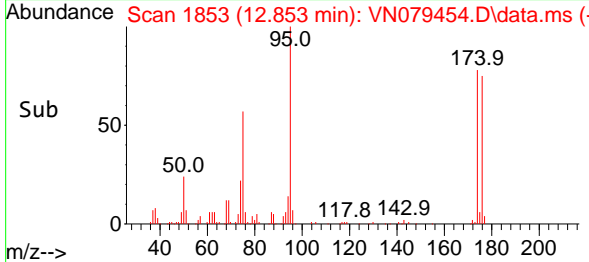
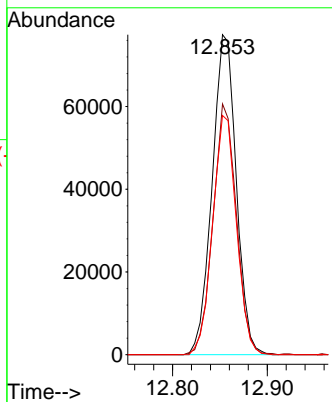
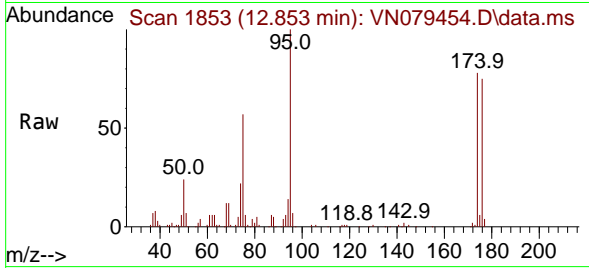


#62
 4-Bromofluorobenzene
 Concen: 40.539 ug/l
 RT: 12.853 min Scan# 1853
 Delta R.T. -0.000 min
 Lab File: VN079454.D
 Acq: 06 Oct 2023 17:56

Instrument : MSVOA_N
 ClientSampleId : DTP-1

Tgt Ion: 95 Resp: 136946

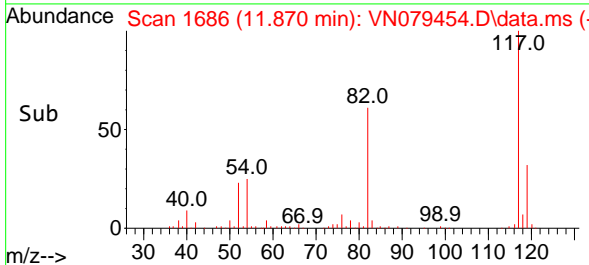
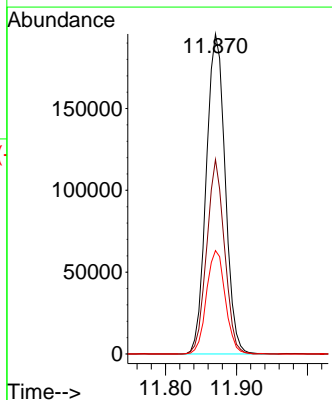
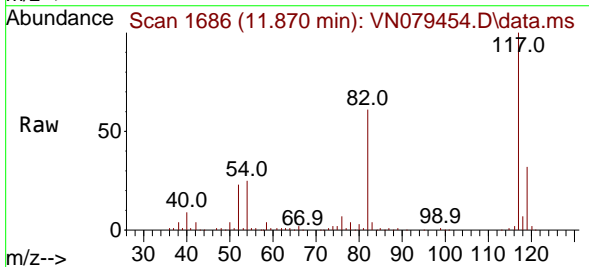
Ion	Ratio	Lower	Upper
95	100		
174	76.0	0.0	143.8
176	73.8	0.0	135.8

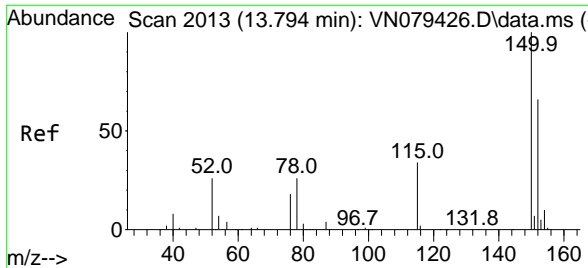


#63
 Chlorobenzene-d5
 Concen: 50.000 ug/l
 RT: 11.870 min Scan# 1686
 Delta R.T. -0.000 min
 Lab File: VN079454.D
 Acq: 06 Oct 2023 17:56

Tgt Ion: 117 Resp: 361590

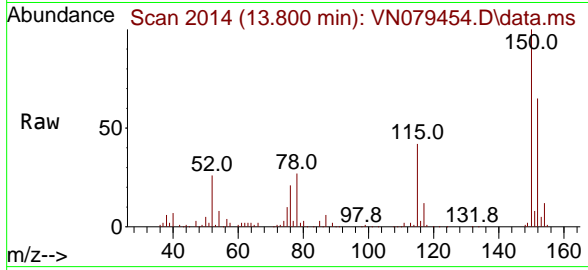
Ion	Ratio	Lower	Upper
117	100		
82	60.8	44.0	66.0
119	32.3	25.6	38.4





#72
 1,4-Dichlorobenzene-d4
 Concen: 50.000 ug/l
 RT: 13.800 min Scan# 20
 Delta R.T. 0.006 min
 Lab File: VN079454.D
 Acq: 06 Oct 2023 17:56

Instrument :
 MSVOA_N
 ClientSampleId :
 DTP-1



Tgt Ion:152 Resp: 94536

Ion	Ratio	Lower	Upper
152	100		
115	60.3	32.3	96.8
150	154.1	0.0	355.8

