

Data Path : Z:\VOASRV\HPCHEM1\MSVOA N\DATA\VN100720\
 Data File : VN063947.D
 Acq On : 7 Oct 2020 16:55
 Operator : JC/MD
 Sample : L4250-01
 Misc : 5.00mL/MSVOA N/WATER
 ALS Vial : 18 Sample Multiplier: 1

Instrument :
 MSVOA_N
 ClientSampled :
 MW-13

Quant Time: Oct 08 05:01:51 2020
 Quant Method : Z:\VOASRV\HPCHEM1\MSVOA_N\METHODS\82N093020W.M
 Quant Title : SW846 8260
 QLast Update : Thu Oct 01 01:46:38 2020
 Response via : Initial Calibration

Internal Standards	R.T.	QIon	Response	Conc	Units	Dev(Min)
1) Pentafluorobenzene	7.63	168	232196	50.00	ug/l	0.00
34) 1,4-Difluorobenzene	8.55	114	413583	50.00	ug/l	0.00
63) Chlorobenzene-d5	11.38	117	432956	50.00	ug/l	0.00
72) 1,4-Dichlorobenzene-d4	13.32	152	190026	50.00	ug/l	0.00

System Monitoring Compounds

33) 1,2-Dichloroethane-d4	7.99	65	200854	52.36	ug/l	0.00
Spiked Amount	50.000		Recovery	=	104.72%	
35) Dibromofluoromethane	7.55	113	146620	51.09	ug/l	0.00
Spiked Amount	50.000		Recovery	=	102.18%	
50) Toluene-d8	10.06	98	539953	49.63	ug/l	0.00
Spiked Amount	50.000		Recovery	=	99.26%	
62) 4-Bromofluorobenzene	12.38	95	215448	52.68	ug/l	0.00
Spiked Amount	50.000		Recovery	=	105.36%	

Target Compounds

						Qvalue
3) Chloromethane	2.04	50	1233	0.429	ug/l #	84
11) Tert butyl alcohol	4.73	59	168	0.397	ug/l #	71
16) Acetone	3.78	43	37442	31.707	ug/l	97
17) Carbon Disulfide	4.02	76	791	0.824	ug/l #	76
19) Methyl tert-butyl Ether	4.98	73	2268	0.267	ug/l #	1
20) Methylene Chloride	4.50	84	636	0.333	ug/l #	76
25) 2-Butanone	6.80	43	8356	4.991	ug/l #	83
30) Chloroform	7.34	83	1145	0.215	ug/l #	70
31) Cyclohexane	7.62	56	8832	1.983	ug/l #	46
36) 1,1-Dichloropropene	7.63	75	21365	5.099	ug/l #	47
37) Ethyl Acetate	6.80	43	8356	2.007	ug/l #	70
38) Carbon Tetrachloride	7.63	117	25952	5.524	ug/l #	14
39) Methylcyclohexane	9.05	83	5461	1.307	ug/l	97
40) Benzene	8.01	78	23672	1.978	ug/l	95
51) 4-Methyl-2-Pentanone	9.96	43	1924	0.477	ug/l #	69
52) Toluene	10.13	92	2985	0.403	ug/l	83
55) 1,1,2-Trichloroethane	10.49	97	1075	0.362	ug/l #	14
67) Ethyl Benzene	11.49	91	105682	6.539	ug/l	97
68) m/p-Xylenes	11.60	106	116838	19.398	ug/l	99
69) o-Xylene	11.92	106	34687	6.162	ug/l	97
70) Styrene	11.92	104	2521	0.264	ug/l #	1
73) Isopropylbenzene	12.22	105	11978	0.864	ug/l	99
74) N-amyl acetate	12.01	43	382	2.273	ug/l #	46
76) 1,2,3-Trichloropropane	12.38	75	121695	29.052	ug/l #	100
78) n-propylbenzene	12.57	91	22113	1.371	ug/l	97
79) 2-Chlorotoluene	12.63	91	25250	2.545	ug/l #	43
80) 1,3,5-Trimethylbenzene	12.71	105	134492	11.566	ug/l	97
81) trans-1,4-Dichloro-2-buten	12.38	75	121695	83.673	ug/l #	6
82) 4-Chlorotoluene	12.71	91	16609	1.613	ug/l #	44
83) tert-Butylbenzene	13.01	119	43353	4.558	ug/l #	69
84) 1,2,4-Trimethylbenzene	13.02	105	352417	30.356	ug/l	98
85) sec-Butylbenzene	13.02	105	352417	28.209	ug/l #	58
86) p-Isopropyltoluene	13.21	119	7597	0.687	ug/l	92
89) n-Butylbenzene	13.56	91	8769	0.860	ug/l #	1

Data Path : Z:\VOASRV\HPCHEM1\MSVOA N\DATA\VN100720\
Data File : VN063947.D
Acq On : 7 Oct 2020 16:55
Operator : JC/MD
Sample : L4250-01
Misc : 5.00mL/MSVOA N/WATER
ALS Vial : 18 Sample Multiplier: 1

Instrument :
MSVOA_N
ClientSampleId :
MW-13

Quant Time: Oct 08 05:01:51 2020
Quant Method : Z:\VOASRV\HPCHEM1\MSVOA_N\METHODS\82N093020W.M
Quant Title : SW846 8260
QLast Update : Thu Oct 01 01:46:38 2020
Response via : Initial Calibration

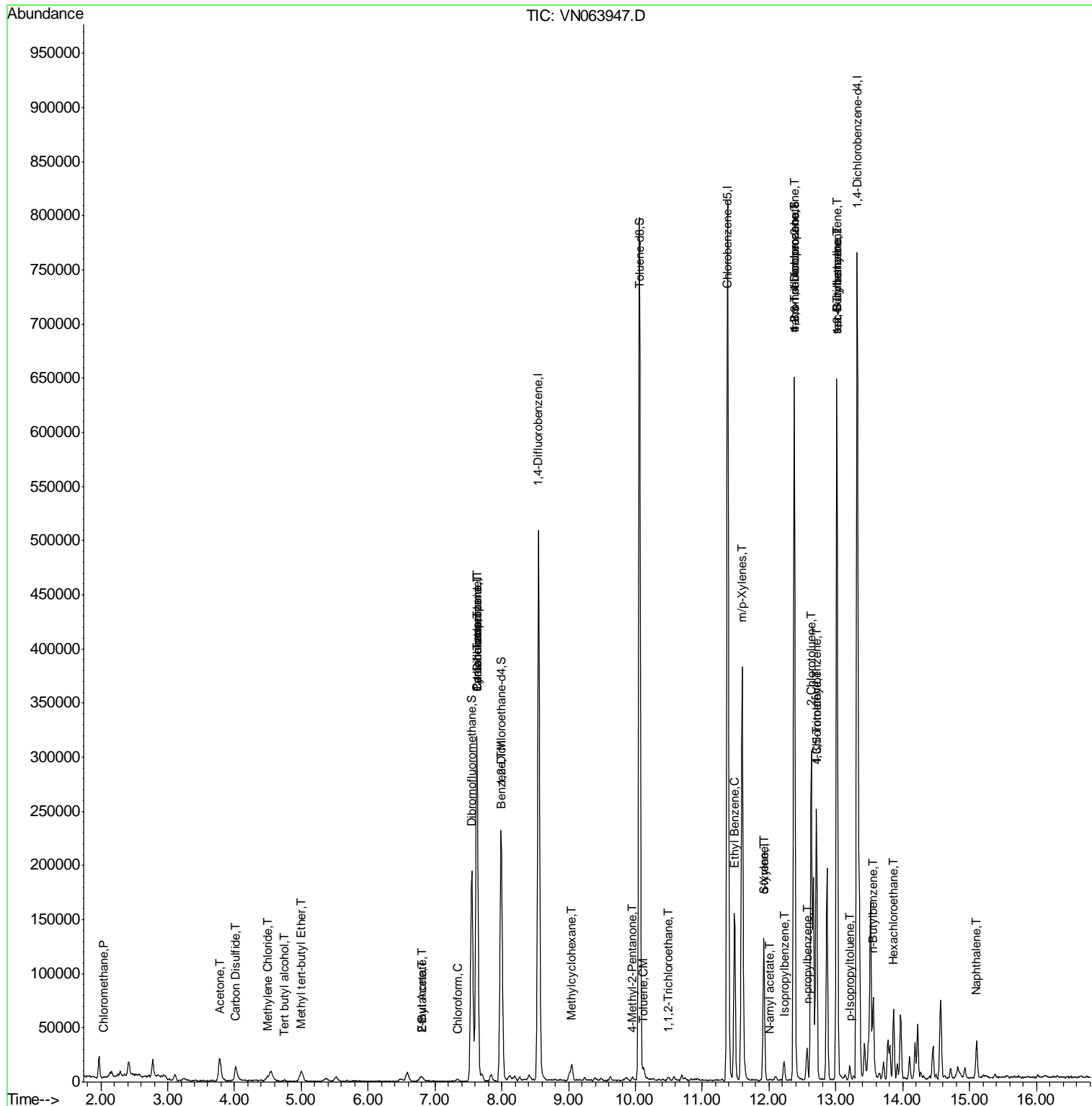
Internal Standards	R.T.	QIon	Response	Conc	Units	Dev(Min)
90) Hexachloroethane	13.87	117	4508	2.105	ug/l #	14
95) Naphthalene	15.11	128	29940	4.732	ug/l	99

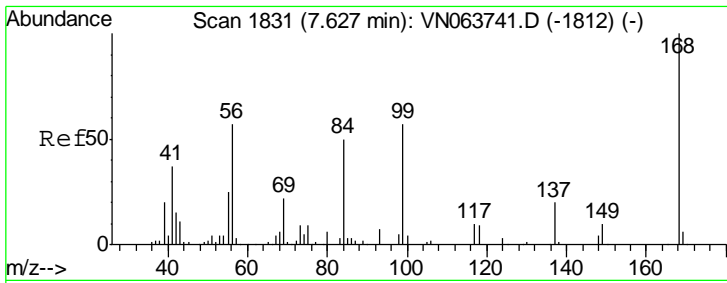
(#) = qualifier out of range (m) = manual integration (+) = signals summed

Data Path : Z:\VOASRV\HPCHEM1\MSVOA N\DATA\VN100720\
 Data File : VN063947.D
 Acq On : 7 Oct 2020 16:55
 Operator : JC/MD
 Sample : L4250-01
 Misc : 5.00mL/MSVOA N/WATER
 ALS Vial : 18 Sample Multiplier: 1

Instrument :
 MSVOA_N
 Client Sampled :
 MW-13

Quant Time: Oct 08 05:01:51 2020
 Quant Method : Z:\VOASRV\HPCHEM1\MSVOA_N\METHODS\82N093020W.M
 Quant Title : SW846 8260
 QLast Update : Thu Oct 01 01:46:38 2020
 Response via : Initial Calibration

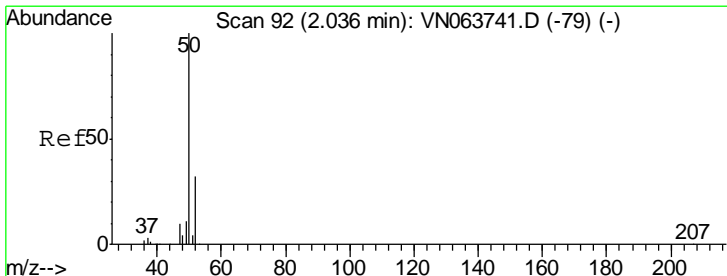
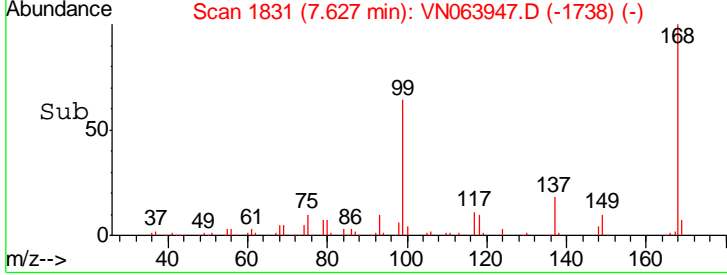
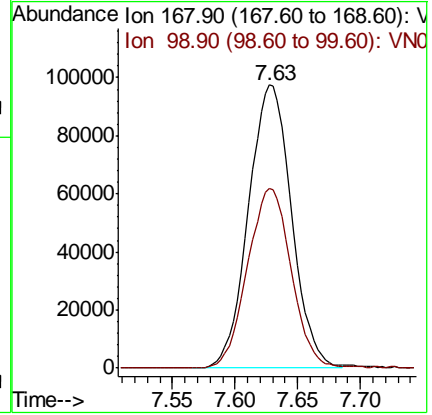
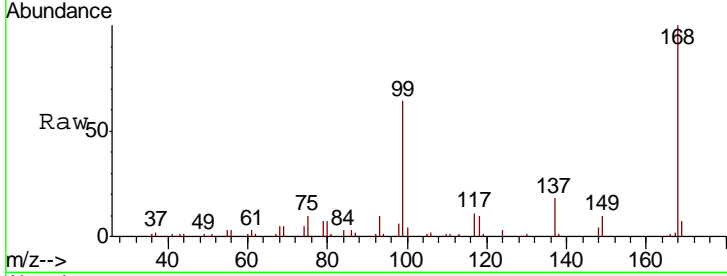




#1
 Pentafluorobenzene
 Concen: 50.000 ug/l
 RT: 7.63 min Scan# 1831
 Delta R.T. 0.00 min
 Lab File: VN063947.D
 Acq: 7 Oct 2020 16:55

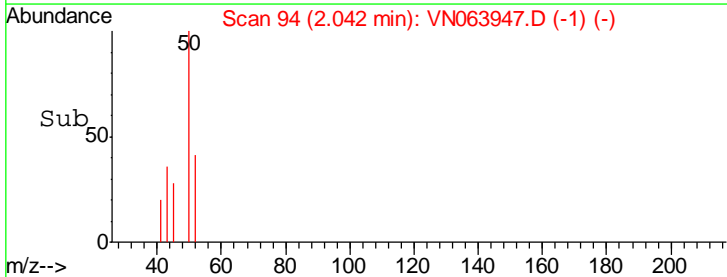
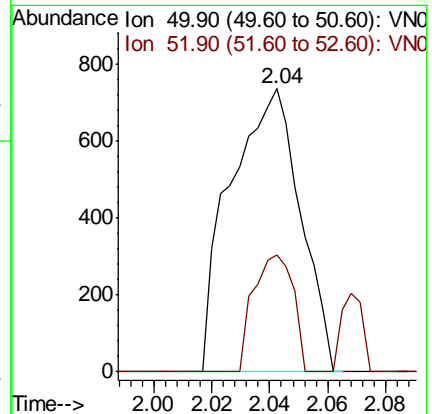
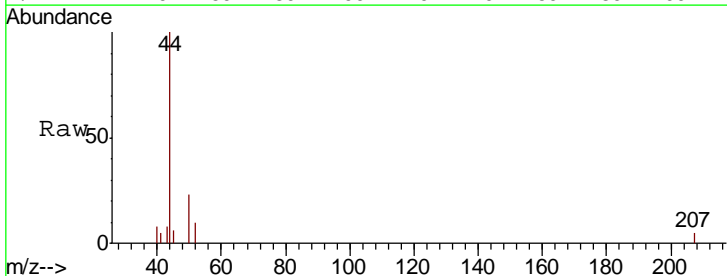
Instrument :
 MSVOA_N
 ClientSampled :
 MW-13

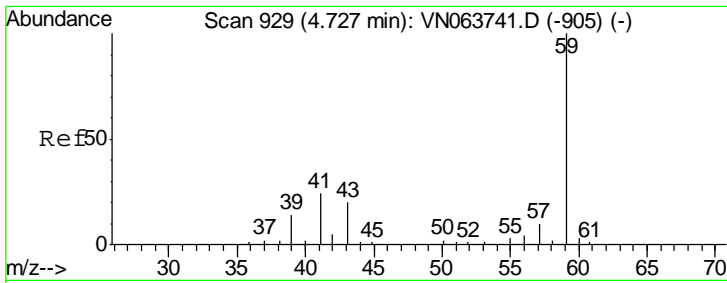
Tgt Ion: 168 Resp: 232196
 Ion Ratio Lower Upper
 168 100
 99 63.6 51.8 77.6



#3
 Chloromethane
 Concen: 0.429 ug/l
 RT: 2.04 min Scan# 94
 Delta R.T. 0.01 min
 Lab File: VN063947.D
 Acq: 7 Oct 2020 16:55

Tgt Ion: 50 Resp: 1233
 Ion Ratio Lower Upper
 50 100
 52 41.5 25.8 38.8#

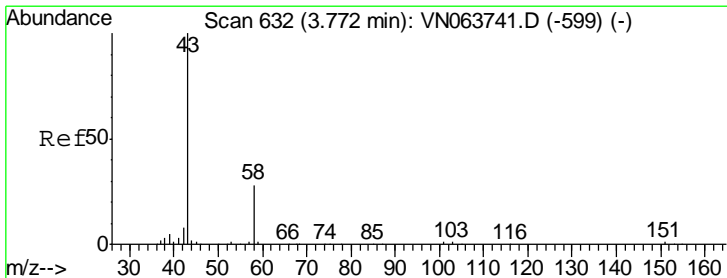
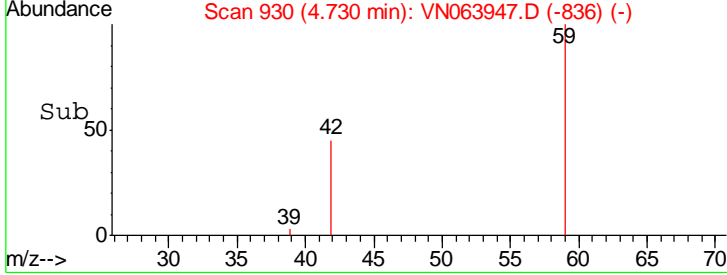
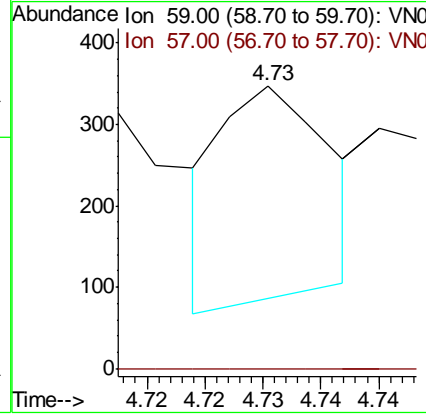
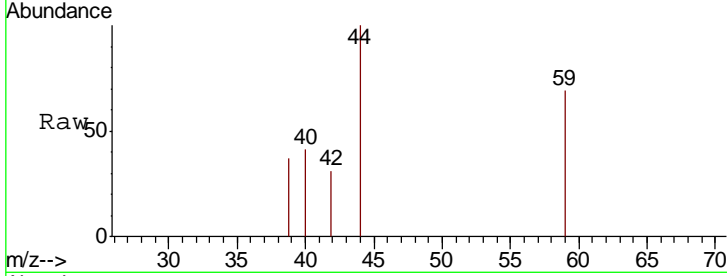




#11
 Tert butyl alcohol
 Concen: 0.397 ug/l
 RT: 4.73 min Scan# 930
 Delta R.T. 0.00 min
 Lab File: VN063947.D
 Acq: 7 Oct 2020 16:55

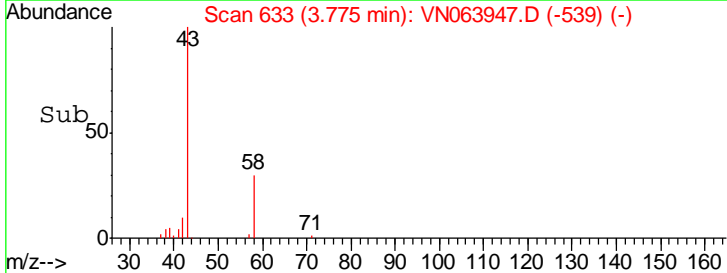
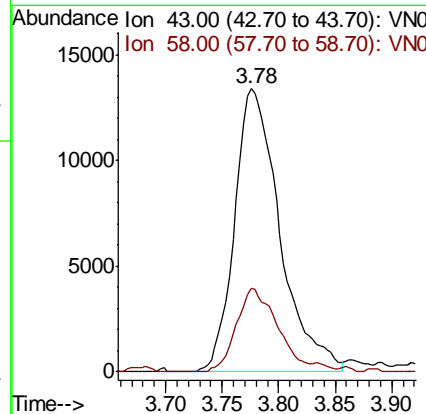
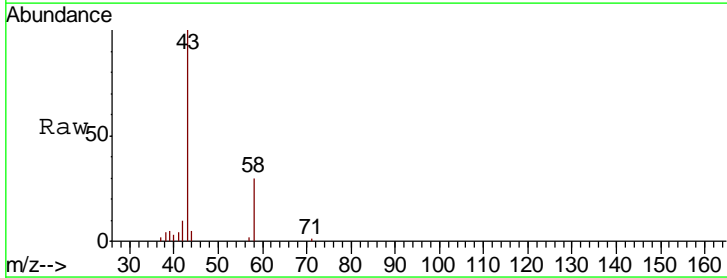
Instrument : MSVOA_N
 ClientSampled : MW-13

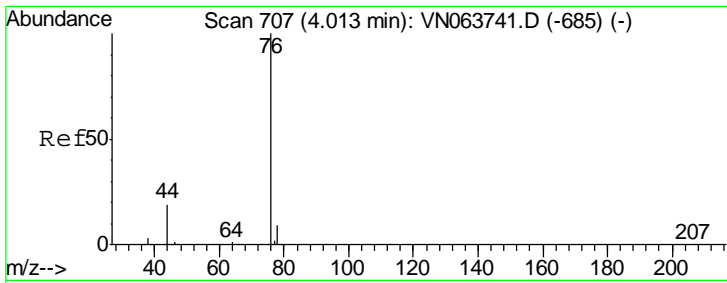
Tgt Ion	Resp	Lower	Upper
59	168		
57	0.0	8.7	13.1#



#16
 Acetone
 Concen: 31.707 ug/l
 RT: 3.78 min Scan# 633
 Delta R.T. 0.00 min
 Lab File: VN063947.D
 Acq: 7 Oct 2020 16:55

Tgt Ion	Resp	Lower	Upper
43	37442		
58	29.6	22.3	33.5

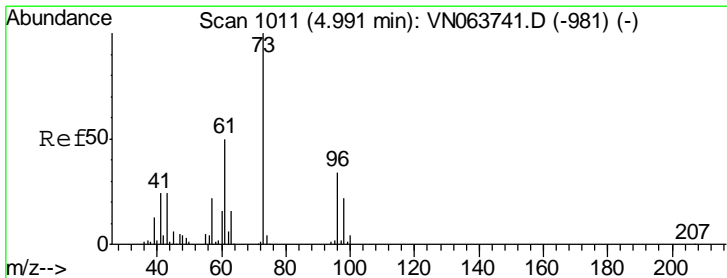
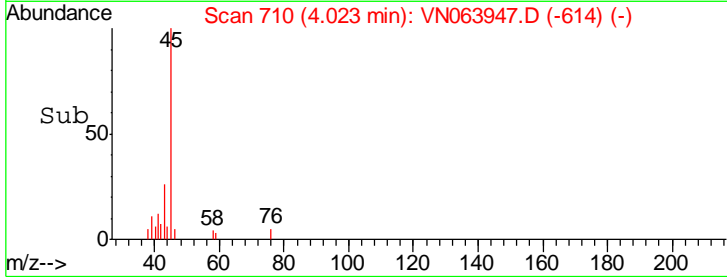
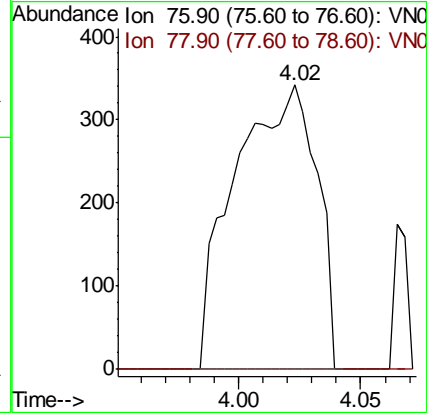
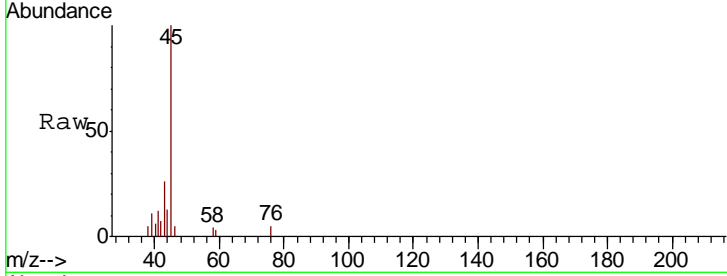




#17
 Carbon Disulfide
 Concen: 0.824 ug/l
 RT: 4.02 min Scan# 710
 Delta R.T. 0.01 min
 Lab File: VN063947.D
 Acq: 7 Oct 2020 16:55

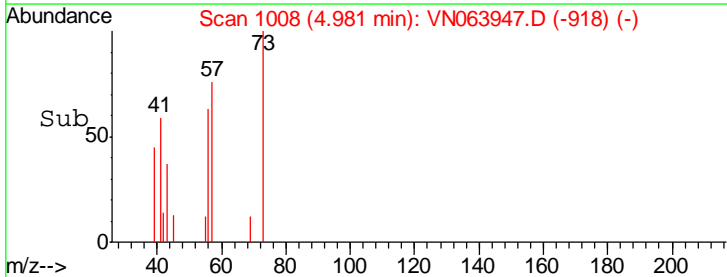
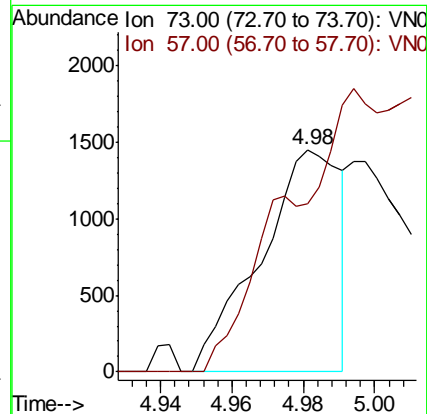
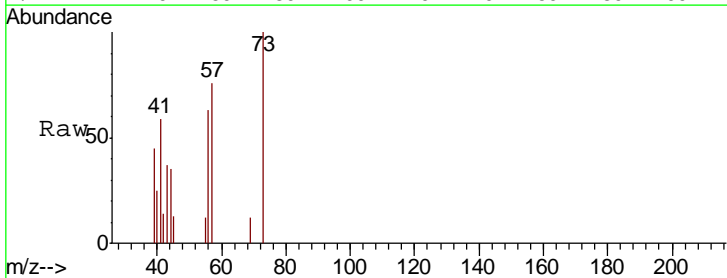
Instrument :
 MSVOA_N
 ClientSampled :
 MW-13

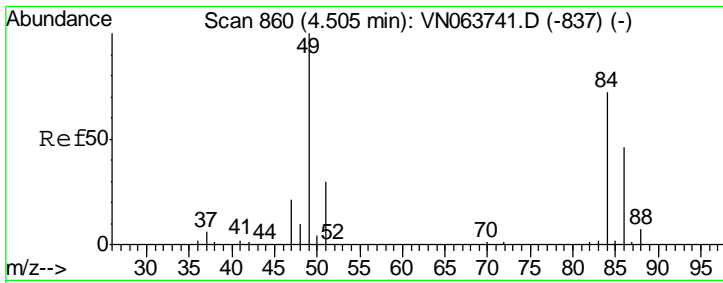
Tgt Ion	Ratio	Lower	Upper
76	100		
78	0.0	7.0	10.4#



#19
 Methyl tert-butyl Ether
 Concen: 0.267 ug/l
 RT: 4.98 min Scan# 1008
 Delta R.T. -0.01 min
 Lab File: VN063947.D
 Acq: 7 Oct 2020 16:55

Tgt Ion	Ratio	Lower	Upper
73	100		
57	75.8	17.6	26.4#

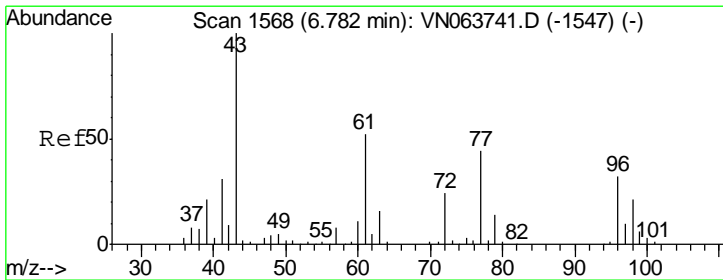
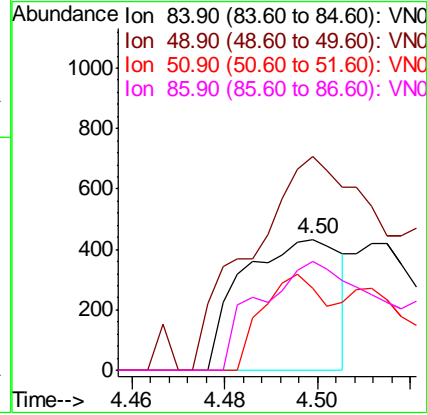
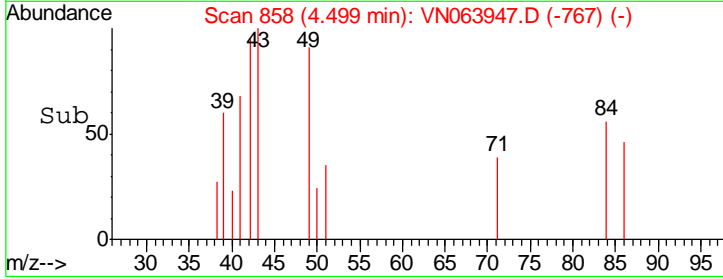
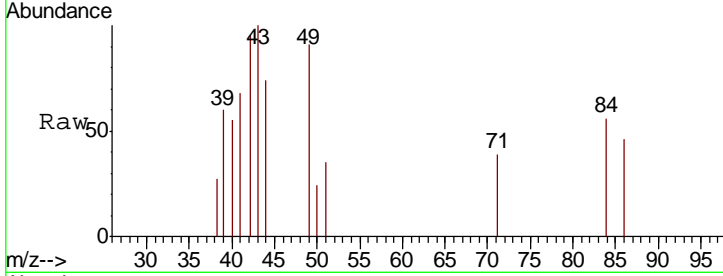




#20
 Methylene Chloride
 Concen: 0.333 ug/l
 RT: 4.50 min Scan# 858
 Delta R.T. -0.01 min
 Lab File: VN063947.D
 Acq: 7 Oct 2020 16:55

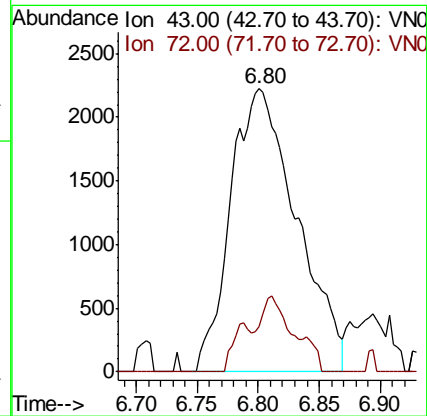
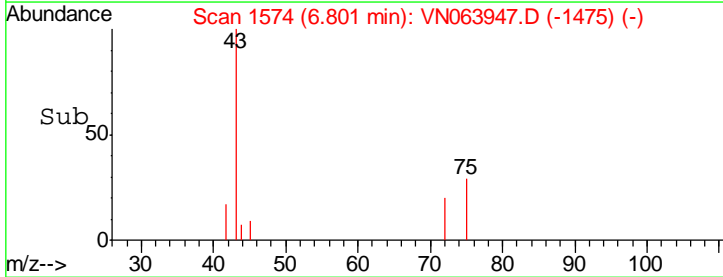
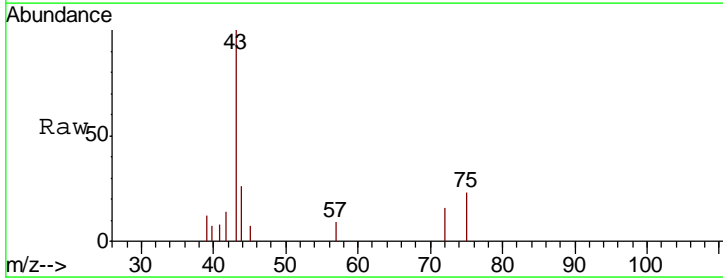
Instrument :
 MSVOA_N
 ClientSampled :
 MW-13

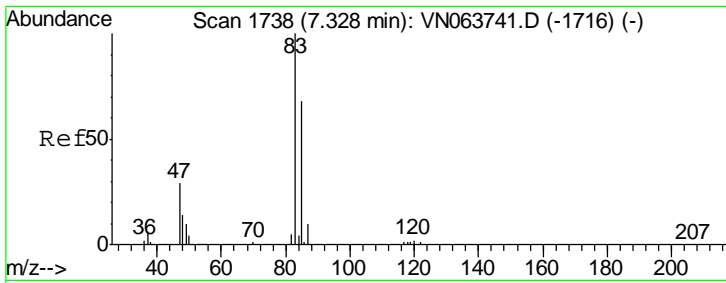
Tgt Ion	Resp	Lower	Upper
84	100		
49	163.3	110.4	165.6
51	62.8	33.3	49.9#
86	83.1	50.7	76.1#



#25
 2-Butanone
 Concen: 4.991 ug/l
 RT: 6.80 min Scan# 1574
 Delta R.T. 0.02 min
 Lab File: VN063947.D
 Acq: 7 Oct 2020 16:55

Tgt Ion	Resp	Lower	Upper
43	100		
72	15.8	19.3	28.9#

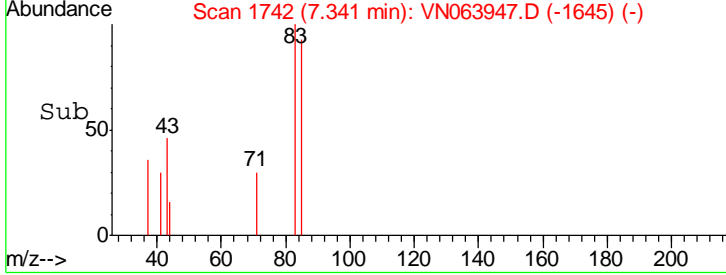
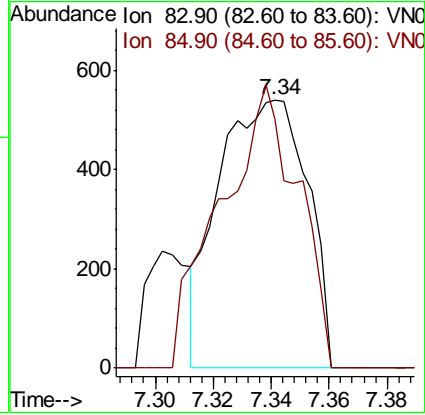
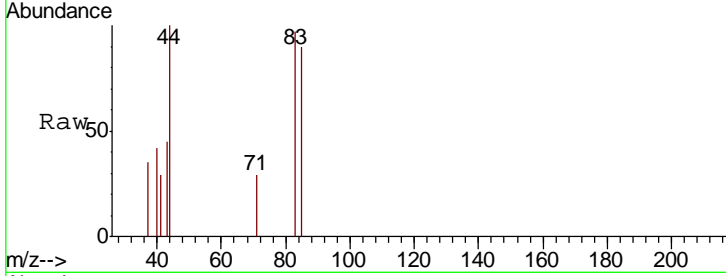




#30
 Chloroform
 Concen: 0.215 ug/l
 RT: 7.34 min Scan# 1742
 Delta R.T. 0.01 min
 Lab File: VN063947.D
 Acq: 7 Oct 2020 16:55

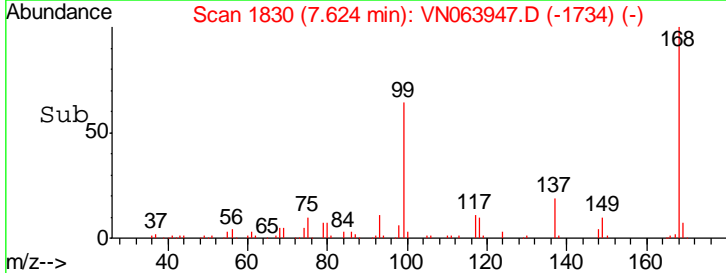
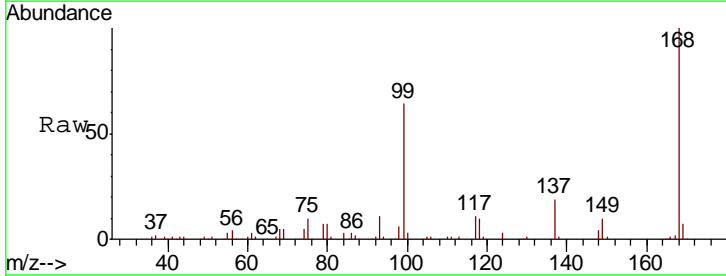
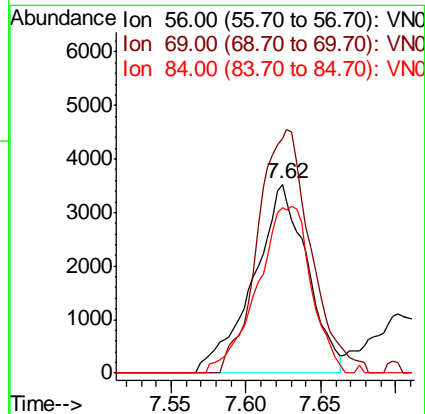
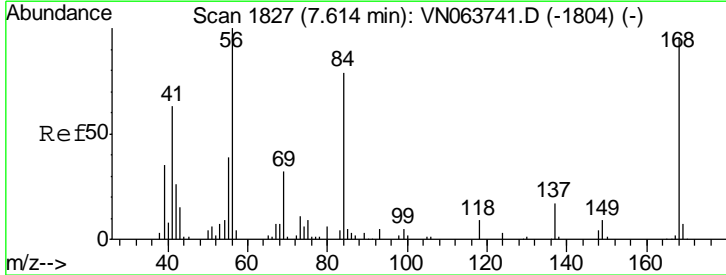
Instrument :
 MSVOA_N
 ClientSampled :
 MW-13

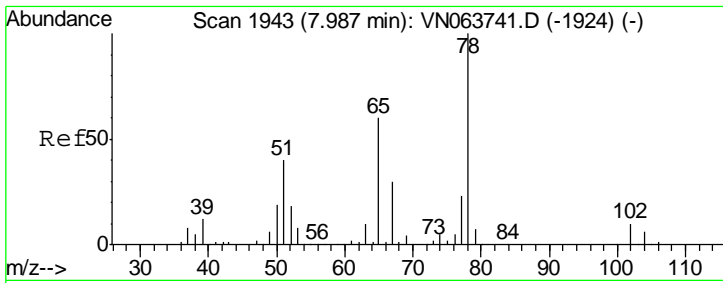
Tgt Ion	Resp	Lower	Upper
83	1145		
85	92.8	54.6	82.0#



#31
 Cyclohexane
 Concen: 1.983 ug/l
 RT: 7.62 min Scan# 1830
 Delta R.T. 0.01 min
 Lab File: VN063947.D
 Acq: 7 Oct 2020 16:55

Tgt Ion	Resp	Lower	Upper
56	8832		
69	124.2	25.4	38.2#
84	87.5	63.3	94.9

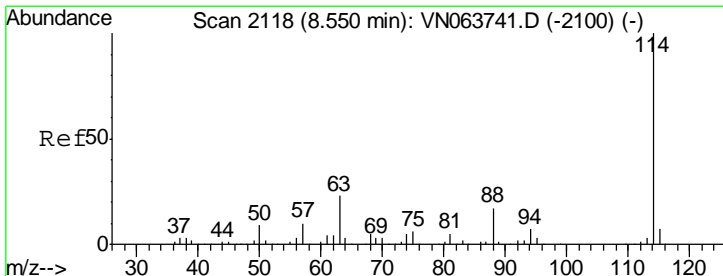
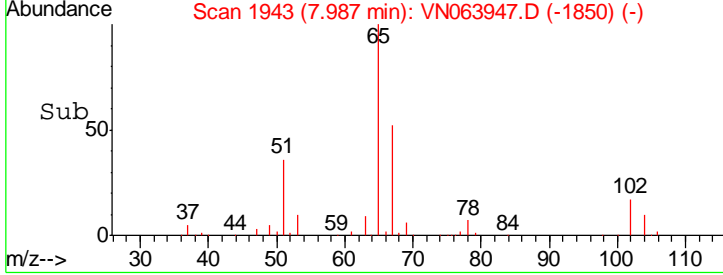
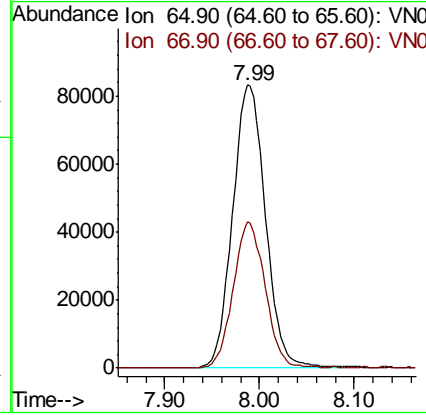
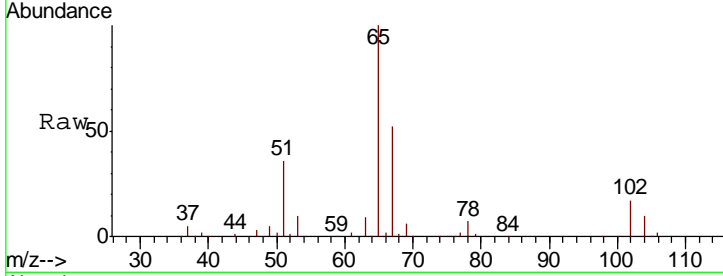




#33
 1,2-Dichloroethane-d4
 Concen: 52.360 ug/l
 RT: 7.99 min Scan# 1943
 Delta R.T. 0.00 min
 Lab File: VN063947.D
 Acq: 7 Oct 2020 16:55

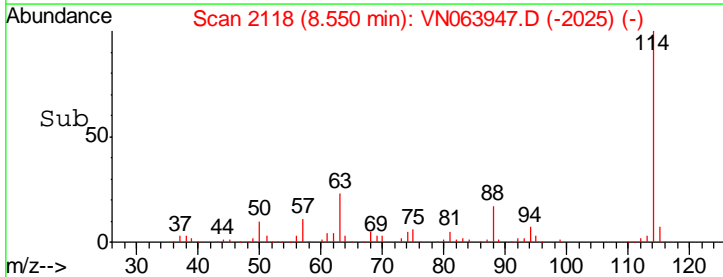
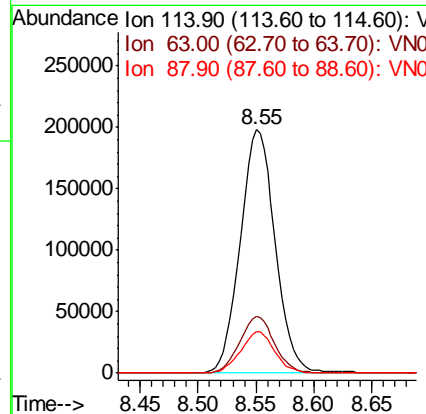
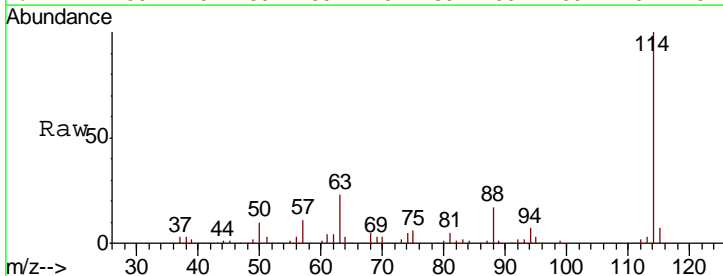
Instrument :
 MSVOA_N
 ClientSampled :
 MW-13

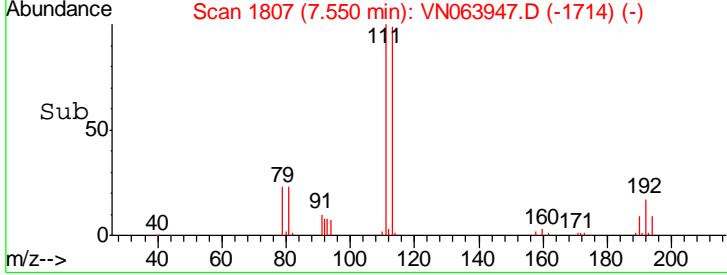
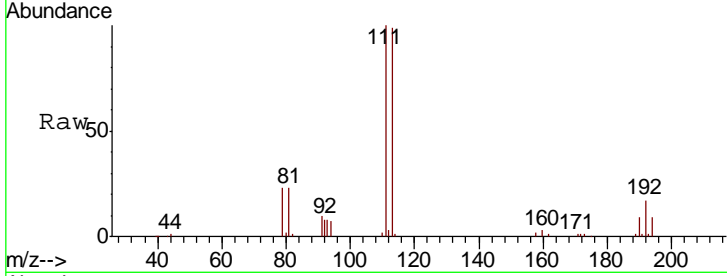
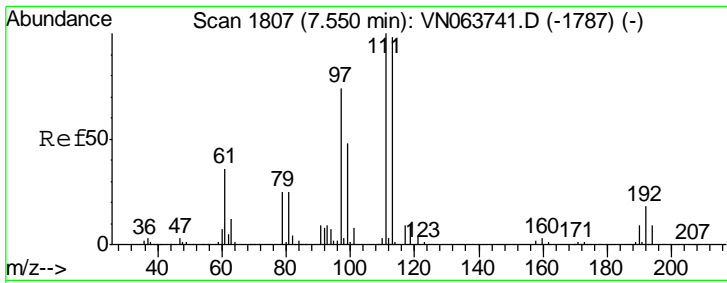
Tgt Ion	Resp	Lower	Upper
65	100		
67	50.2	0.0	99.6



#34
 1,4-Difluorobenzene
 Concen: 50.000 ug/l
 RT: 8.55 min Scan# 2118
 Delta R.T. 0.00 min
 Lab File: VN063947.D
 Acq: 7 Oct 2020 16:55

Tgt Ion	Resp	Lower	Upper
114	100		
63	23.4	0.0	45.0
88	17.0	0.0	34.0

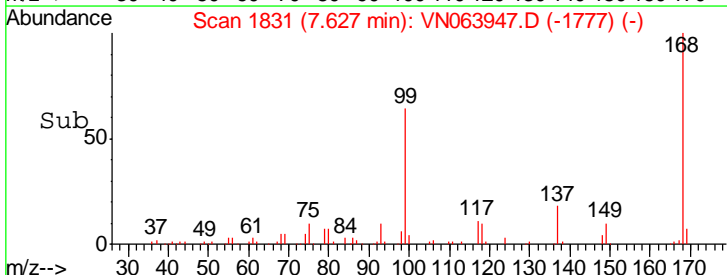
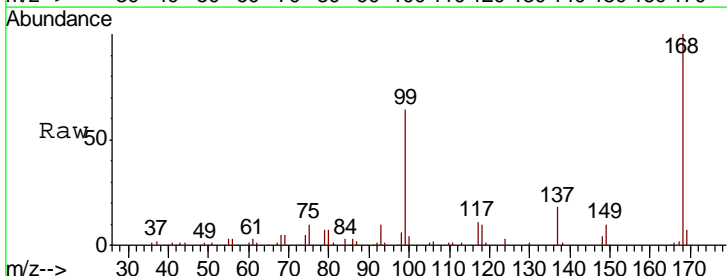
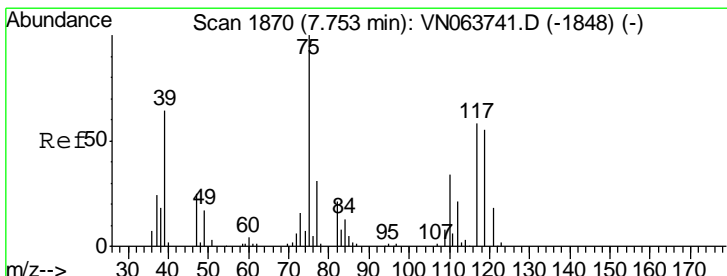
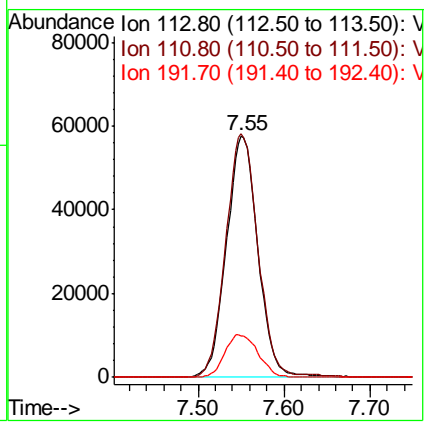




#35
 Dibromofluoromethane
 Concen: 51.091 ug/l
 RT: 7.55 min Scan# 1807
 Delta R.T. 0.00 min
 Lab File: VN063947.D
 Acq: 7 Oct 2020 16:55

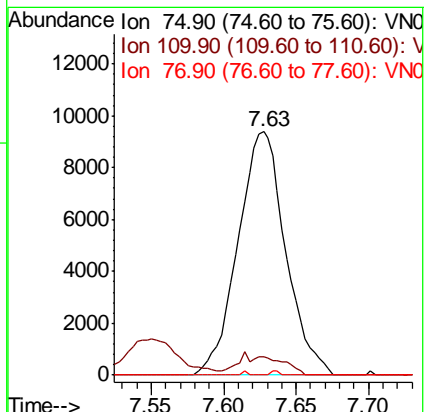
Instrument :
 MSVOA_N
 ClientSampled :
 MW-13

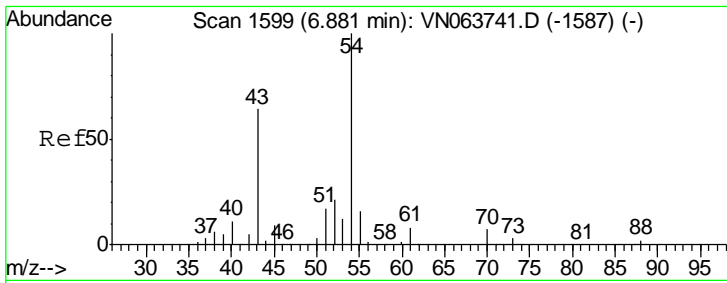
Tgt Ion	Resp	Lower	Upper
113	146620		
113	100		
111	102.0	81.8	122.8
192	18.7	14.2	21.2



#36
 1,1-Dichloropropene
 Concen: 5.099 ug/l
 RT: 7.63 min Scan# 1831
 Delta R.T. -0.13 min
 Lab File: VN063947.D
 Acq: 7 Oct 2020 16:55

Tgt Ion	Resp	Lower	Upper
75	21365		
75	100		
110	4.5	16.9	50.6#
77	0.0	24.5	36.7#

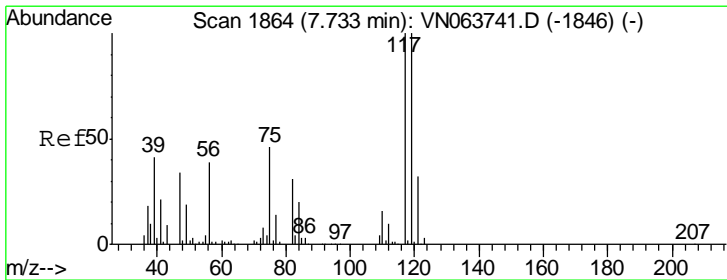
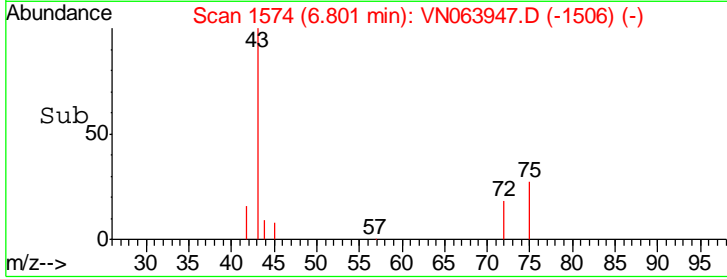
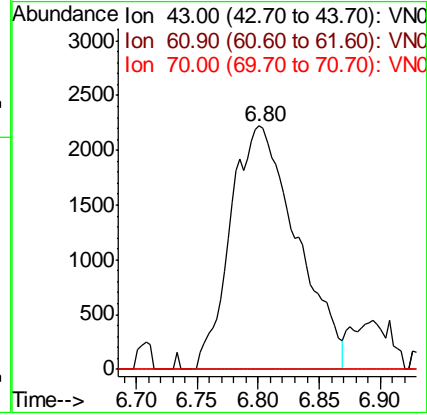
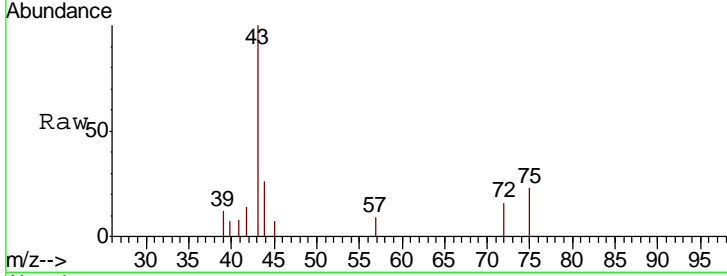




#37
Ethyl Acetate
Concen: 2.007 ug/l
RT: 6.80 min Scan# 1574
Delta R.T. -0.08 min
Lab File: VN063947.D
Acq: 7 Oct 2020 16:55

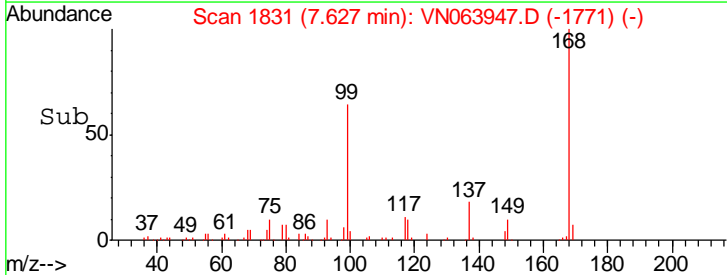
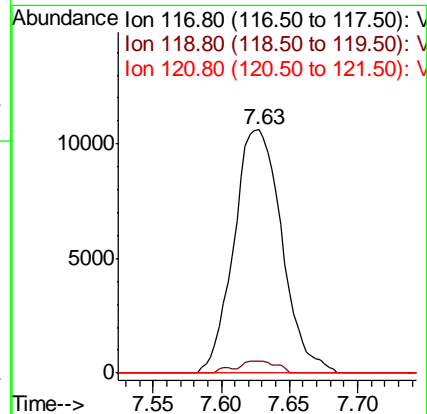
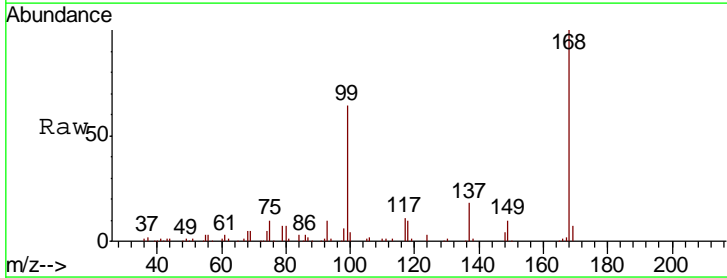
Instrument :
MSVOA_N
ClientSampled :
MW-13

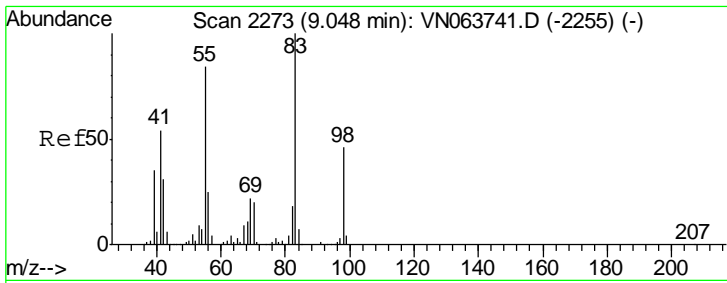
Tgt Ion	Resp	Lower	Upper
43	100		
61	0.0	10.4	15.6#
70	0.0	7.3	10.9#



#38
Carbon Tetrachloride
Concen: 5.524 ug/l
RT: 7.63 min Scan# 1831
Delta R.T. -0.11 min
Lab File: VN063947.D
Acq: 7 Oct 2020 16:55

Tgt Ion	Resp	Lower	Upper
117	100		
119	5.0	80.1	120.1#
121	0.0	25.7	38.5#

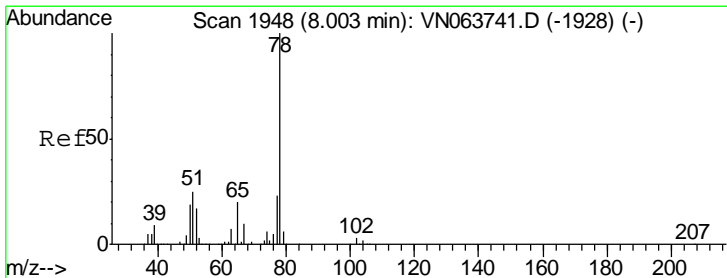
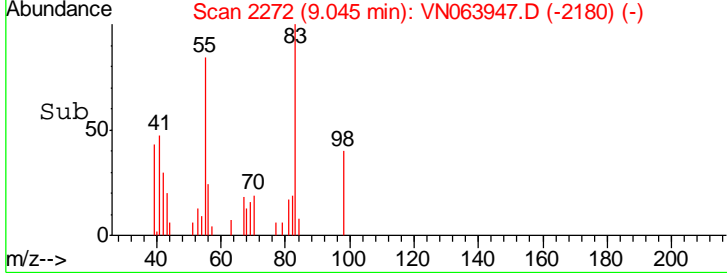
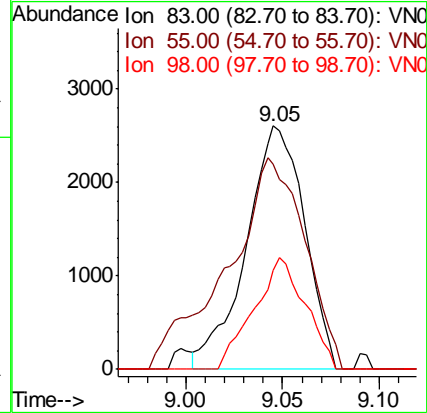
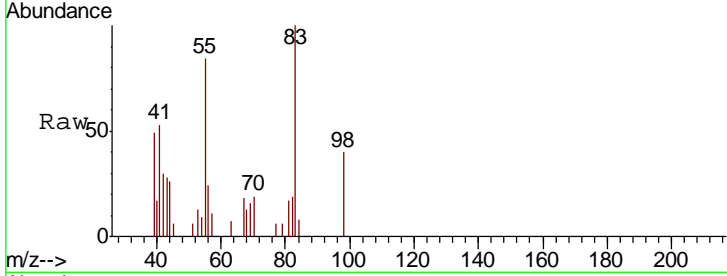




#39
 Methylcyclohexane
 Concen: 1.307 ug/l
 RT: 9.05 min Scan# 2272
 Delta R.T. -0.00 min
 Lab File: VN063947.D
 Acq: 7 Oct 2020 16:55

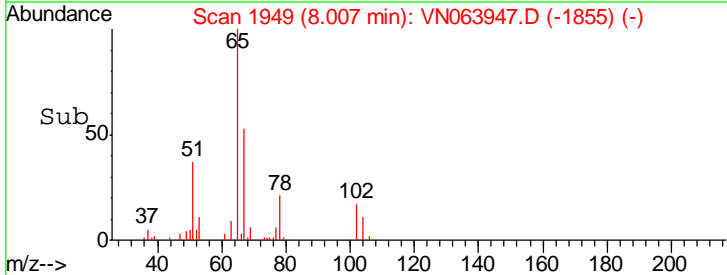
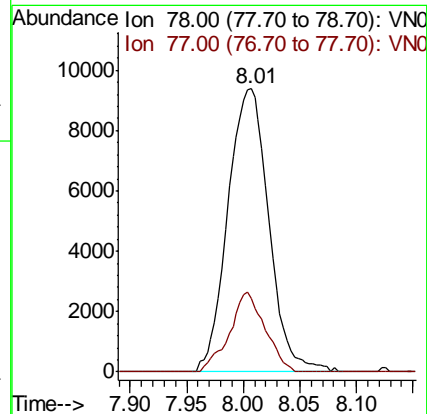
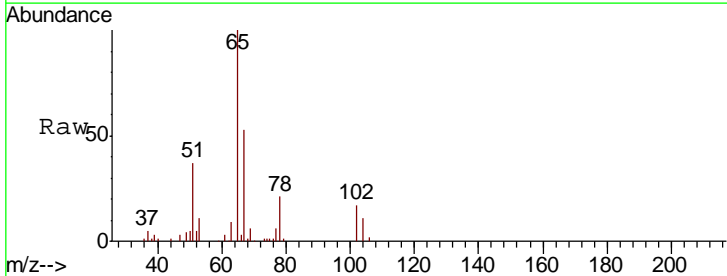
Instrument :
 MSVOA_N
 ClientSampled :
 MW-13

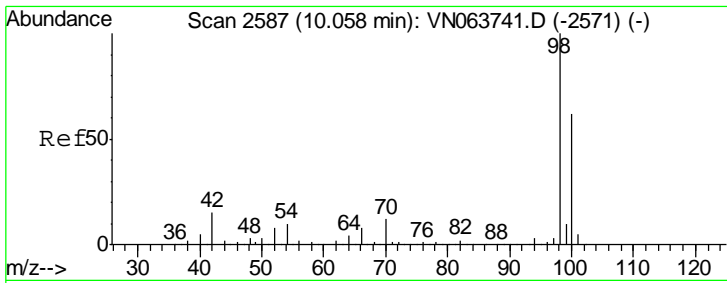
Tgt Ion	Resp	Lower	Upper
83	100		
55	84.4	67.1	100.7
98	40.5	36.6	54.8



#40
 Benzene
 Concen: 1.978 ug/l
 RT: 8.01 min Scan# 1949
 Delta R.T. 0.00 min
 Lab File: VN063947.D
 Acq: 7 Oct 2020 16:55

Tgt Ion	Resp	Lower	Upper
78	100		
77	25.9	18.7	28.1

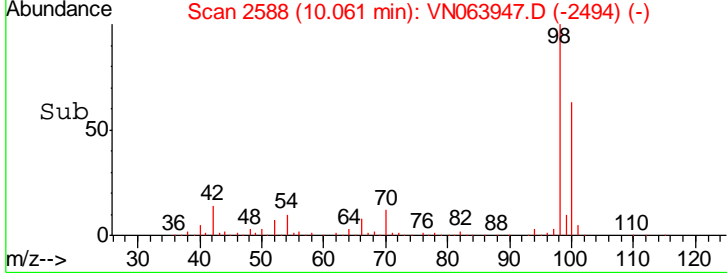
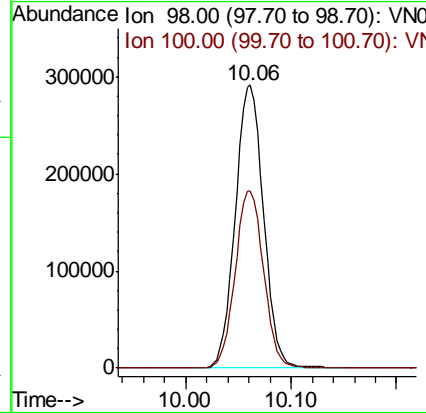
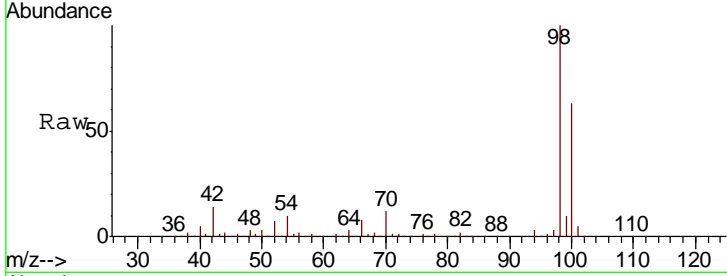




#50
 Toluene-d8
 Concen: 49.633 ug/l
 RT: 10.06 min Scan# 2588
 Delta R.T. 0.00 min
 Lab File: VN063947.D
 Acq: 7 Oct 2020 16:55

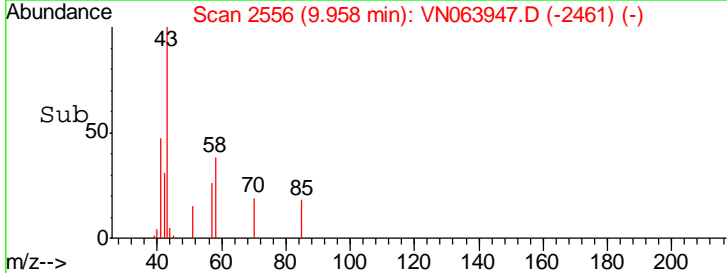
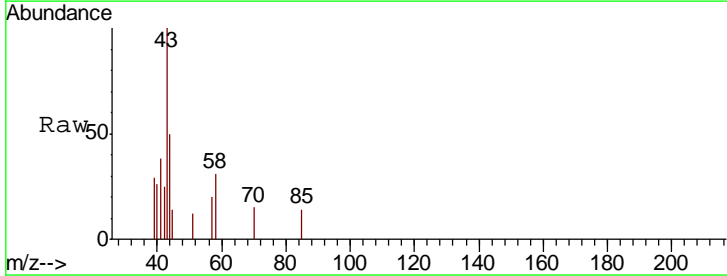
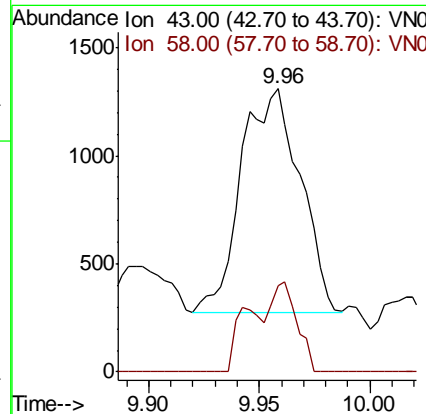
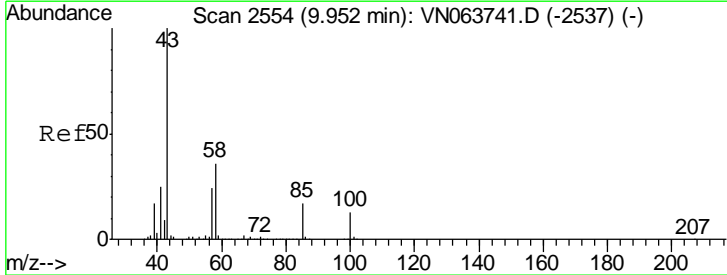
Instrument : MSVOA_N
 ClientSampled : MW-13

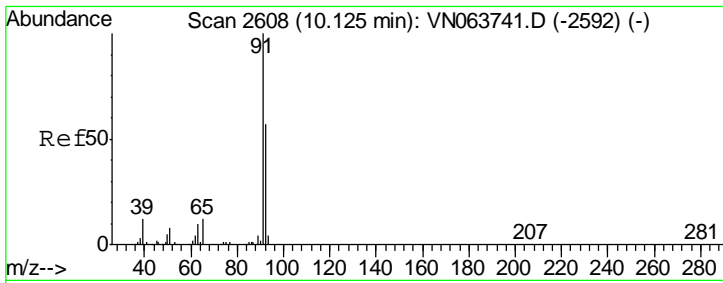
Tgt Ion: 98 Resp: 539953
 Ion Ratio Lower Upper
 98 100
 100 63.2 49.8 74.6



#51
 4-Methyl-2-Pentanone
 Concen: 0.477 ug/l
 RT: 9.96 min Scan# 2556
 Delta R.T. 0.01 min
 Lab File: VN063947.D
 Acq: 7 Oct 2020 16:55

Tgt Ion: 43 Resp: 1924
 Ion Ratio Lower Upper
 43 100
 58 17.6 28.4 42.6#

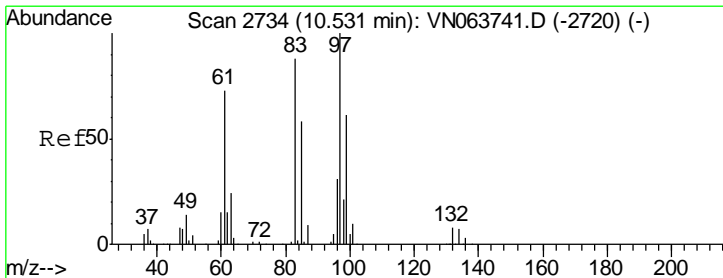
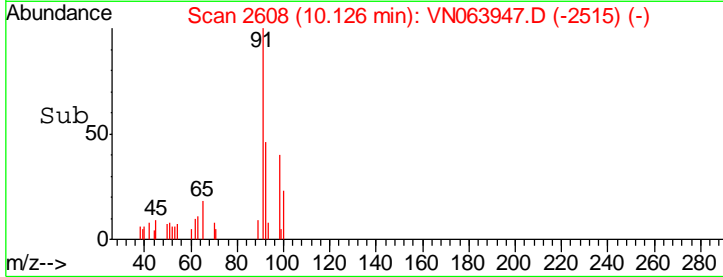
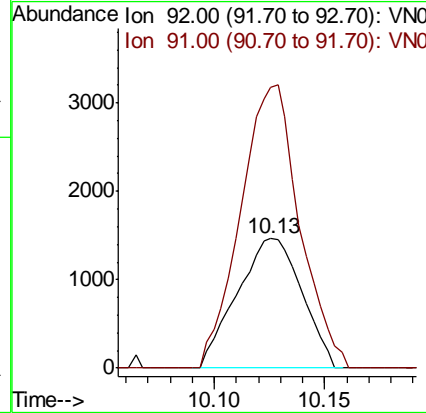
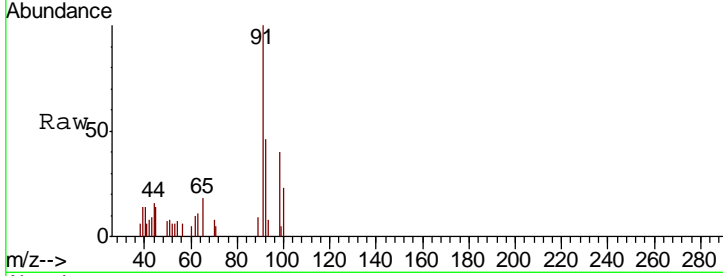




#52
 Toluene
 Concen: 0.403 ug/l
 RT: 10.13 min Scan# 2608
 Delta R.T. 0.00 min
 Lab File: VN063947.D
 Acq: 7 Oct 2020 16:55

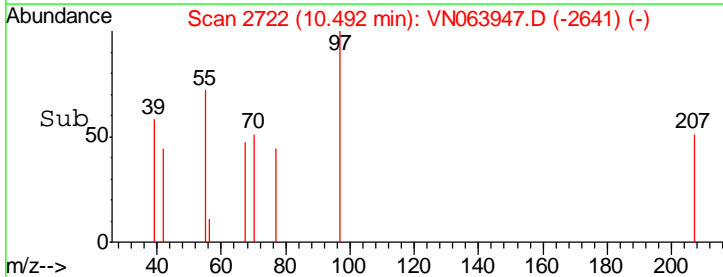
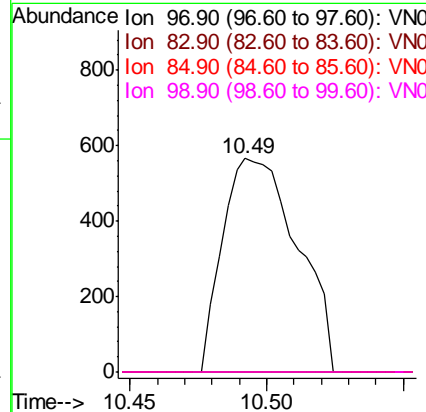
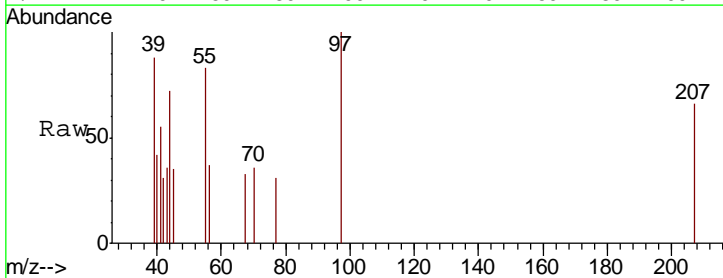
Instrument : MSVOA_N
 ClientSampled : MW-13

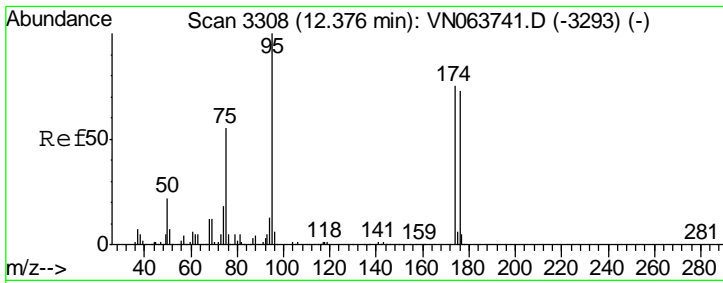
Tgt Ion	Resp	Lower	Upper
92	2985		
92	100		
91	199.5	140.6	210.8



#55
 1,1,2-Trichloroethane
 Concen: 0.362 ug/l
 RT: 10.49 min Scan# 2722
 Delta R.T. -0.04 min
 Lab File: VN063947.D
 Acq: 7 Oct 2020 16:55

Tgt Ion	Resp	Lower	Upper
97	1075		
97	100		
83	0.0	70.7	106.1#
85	0.0	46.1	69.1#
99	0.0	48.8	73.2#

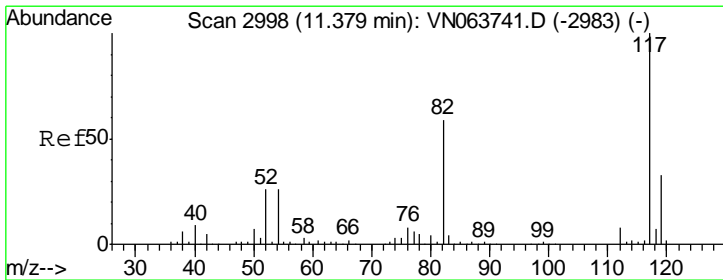
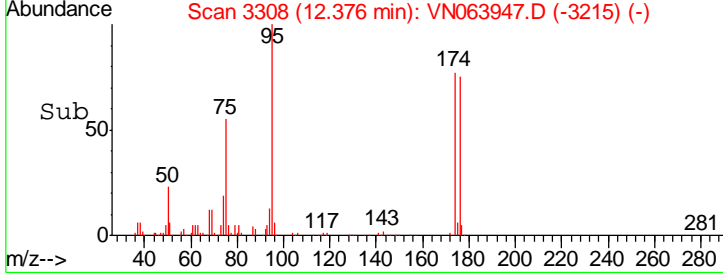
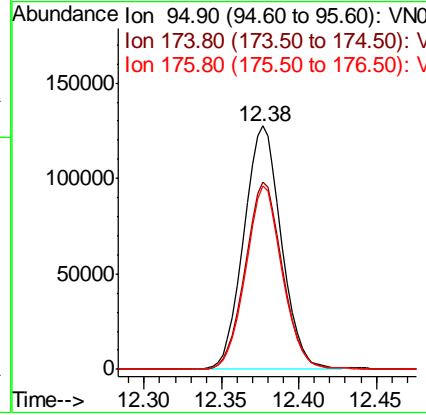
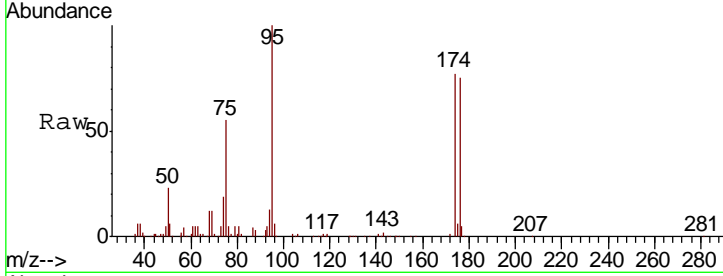




#62
 4-Bromofluorobenzene
 Concen: 52.683 ug/l
 RT: 12.38 min Scan# 3308
 Delta R.T. 0.00 min
 Lab File: VN063947.D
 Acq: 7 Oct 2020 16:55

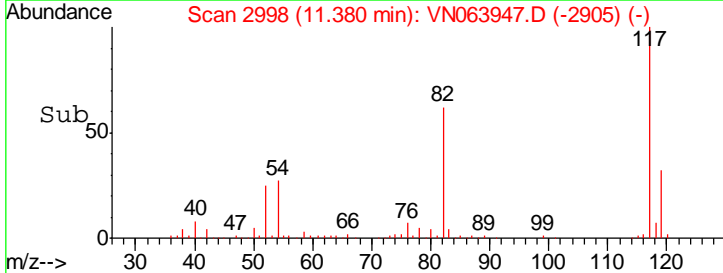
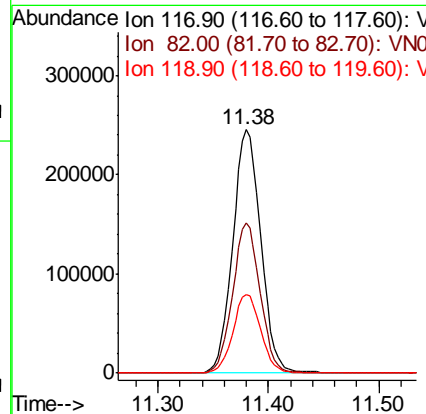
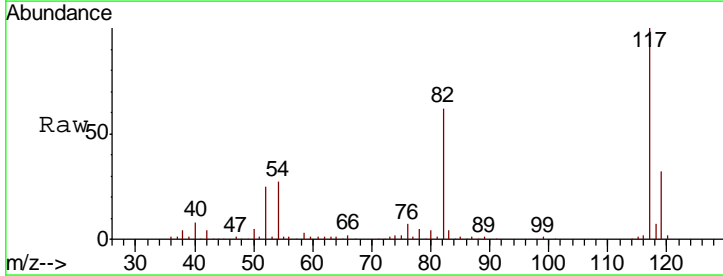
Instrument :
 MSVOA_N
 ClientSampled :
 MW-13

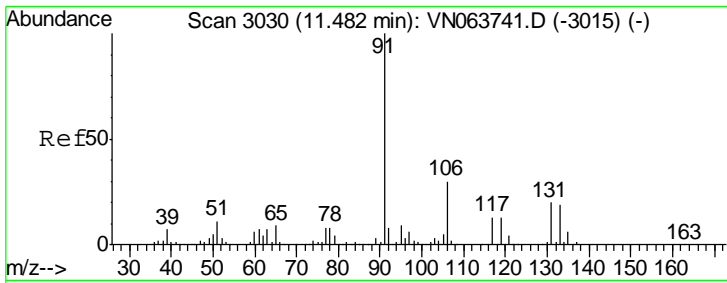
Tgt Ion	Resp	Lower	Upper
95	215448		
174	76.5	0.0	150.6
176	73.9	0.0	145.4



#63
 Chlorobenzene-d5
 Concen: 50.000 ug/l
 RT: 11.38 min Scan# 2998
 Delta R.T. 0.00 min
 Lab File: VN063947.D
 Acq: 7 Oct 2020 16:55

Tgt Ion	Resp	Lower	Upper
117	432956		
82	61.8	47.4	71.2
119	32.3	26.4	39.6

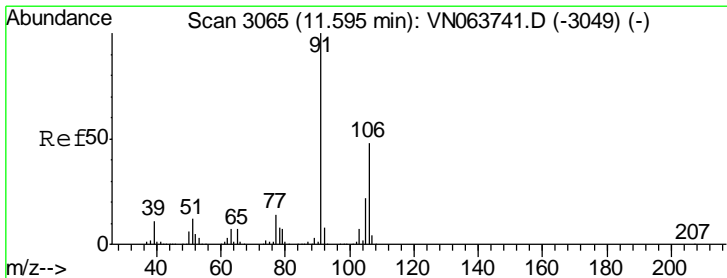
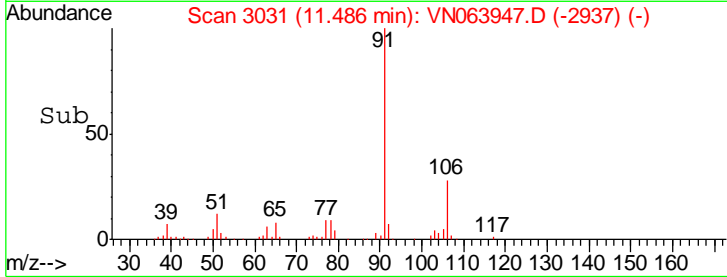
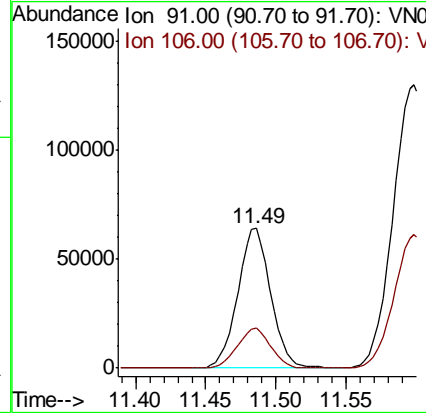
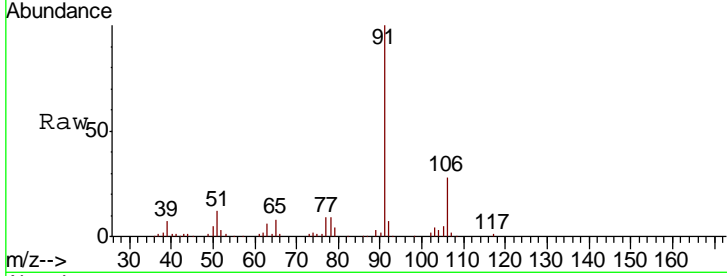




#67
Ethyl Benzene
Concen: 6.539 ug/l
RT: 11.49 min Scan# 3031
Delta R.T. 0.00 min
Lab File: VN063947.D
Acq: 7 Oct 2020 16:55

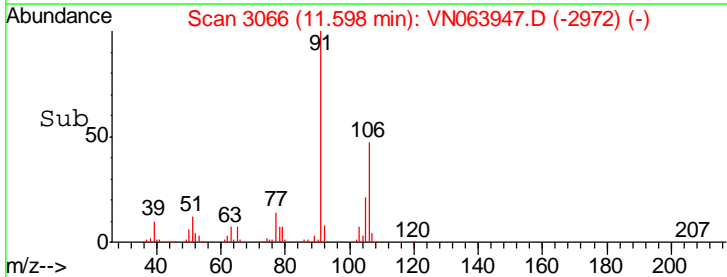
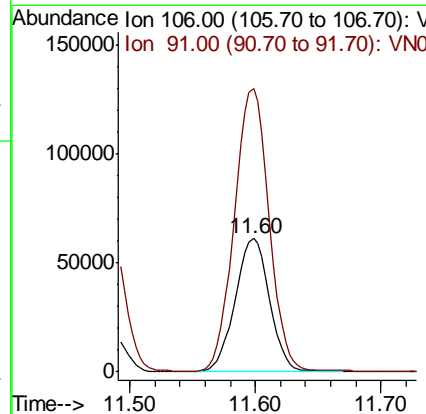
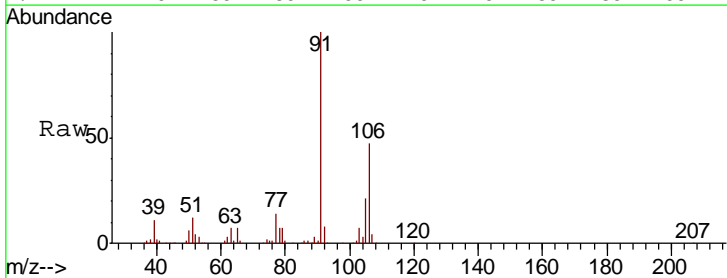
Instrument :
MSVOA_N
ClientSampled :
MW-13

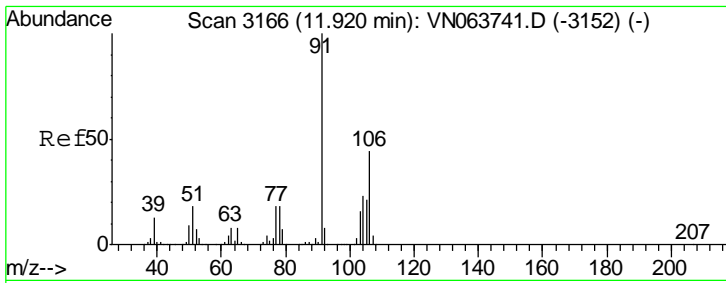
Tgt Ion: 91 Resp: 105682
Ion Ratio Lower Upper
91 100
106 28.5 24.2 36.2



#68
m/p-Xylenes
Concen: 19.398 ug/l
RT: 11.60 min Scan# 3066
Delta R.T. 0.00 min
Lab File: VN063947.D
Acq: 7 Oct 2020 16:55

Tgt Ion: 106 Resp: 116838
Ion Ratio Lower Upper
106 100
91 212.1 168.0 252.0

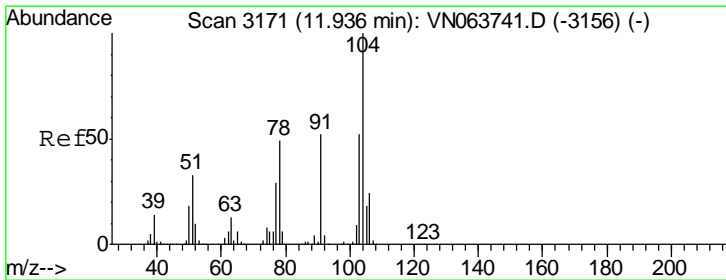
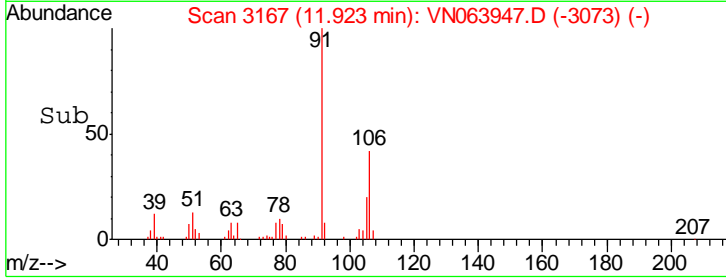
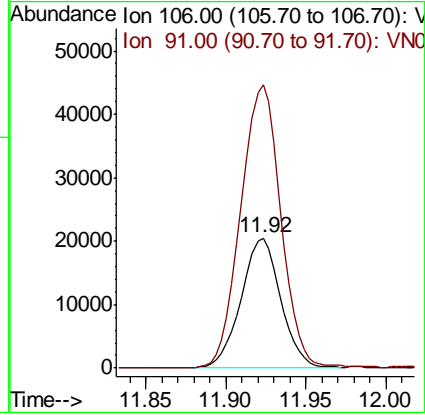
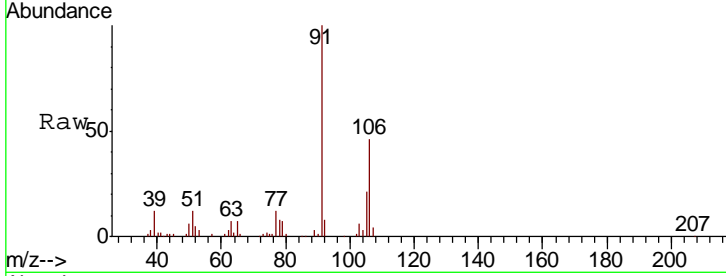




#69
 o-Xylene
 Concen: 6.162 ug/l
 RT: 11.92 min Scan# 3167
 Delta R.T. 0.00 min
 Lab File: VN063947.D
 Acq: 7 Oct 2020 16:55

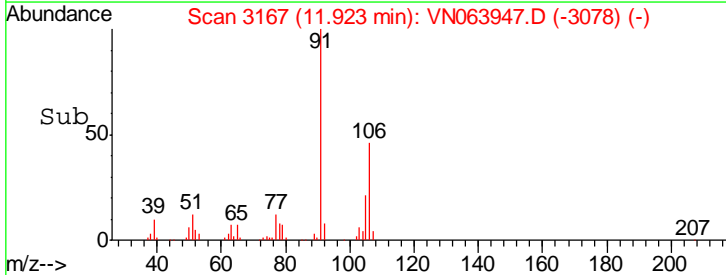
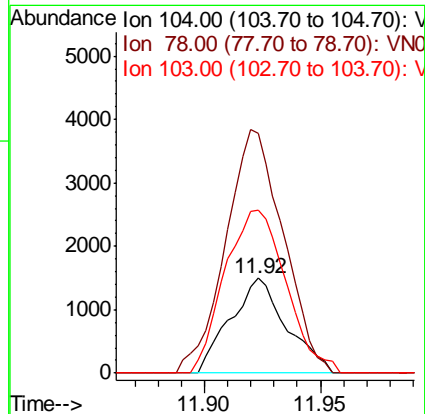
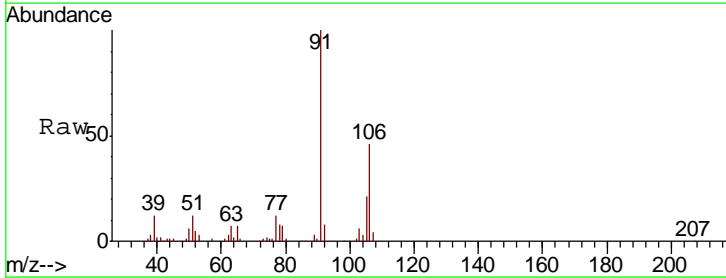
Instrument :
 MSVOA_N
 ClientSampled :
 MW-13

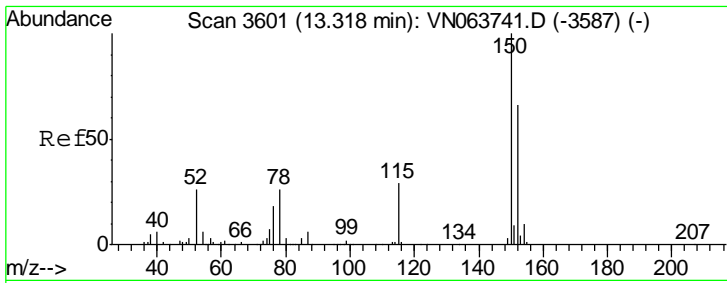
Tgt Ion:106 Resp: 34687
 Ion Ratio Lower Upper
 106 100
 91 221.1 112.7 338.0



#70
 Styrene
 Concen: 0.264 ug/l
 RT: 11.92 min Scan# 3167
 Delta R.T. -0.01 min
 Lab File: VN063947.D
 Acq: 7 Oct 2020 16:55

Tgt Ion:104 Resp: 2521
 Ion Ratio Lower Upper
 104 100
 78 262.6 44.1 66.1#
 103 187.7 44.3 66.5#

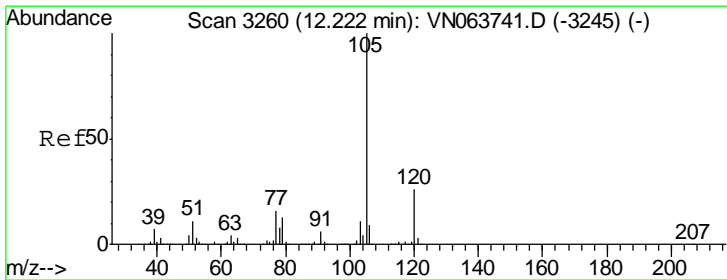
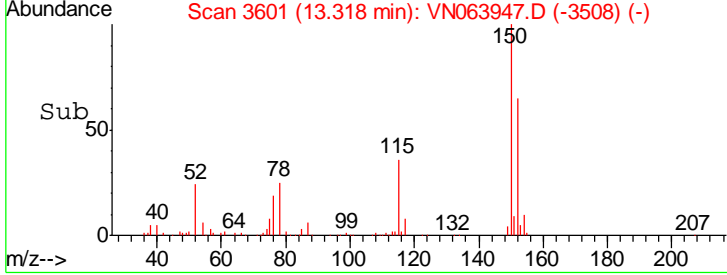
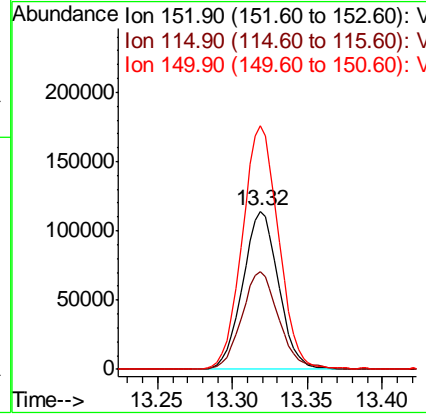
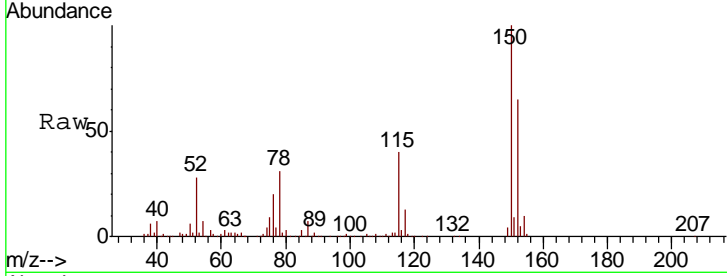




#72
 1,4-Dichlorobenzene-d4
 Concen: 50.000 ug/l
 RT: 13.32 min Scan# 3601
 Delta R.T. 0.00 min
 Lab File: VN063947.D
 Acq: 7 Oct 2020 16:55

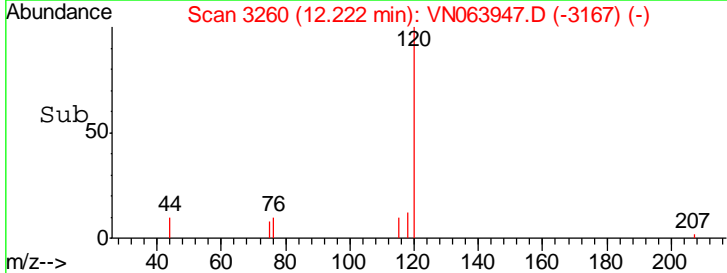
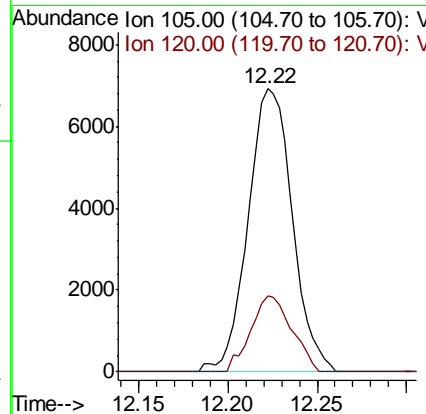
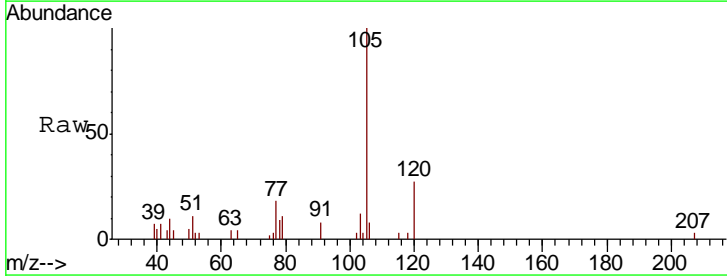
Instrument :
 MSVOA_N
 ClientSampled :
 MW-13

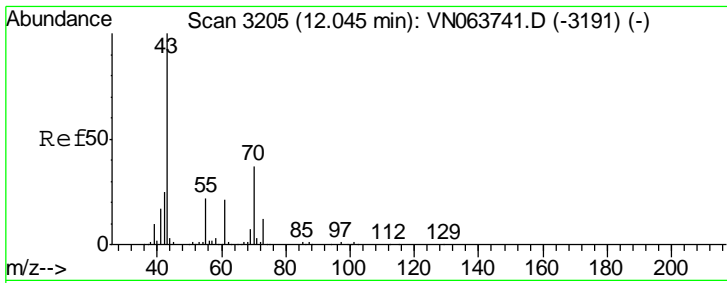
Tgt Ion	Resp	Lower	Upper
152	190026		
152	100		
115	64.5	31.3	93.8
150	156.2	0.0	341.8



#73
 Isopropylbenzene
 Concen: 0.864 ug/l
 RT: 12.22 min Scan# 3260
 Delta R.T. 0.00 min
 Lab File: VN063947.D
 Acq: 7 Oct 2020 16:55

Tgt Ion	Resp	Lower	Upper
105	11978		
105	100		
120	24.8	12.6	37.8

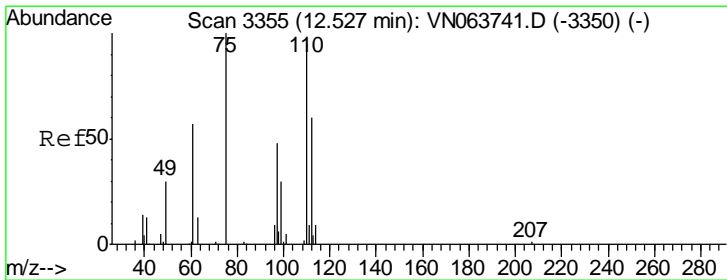
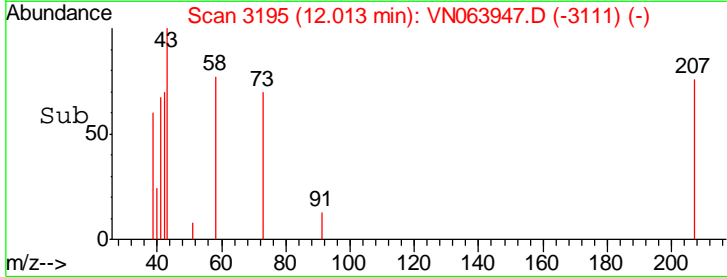
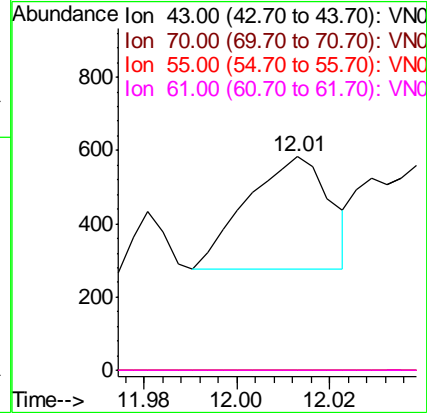
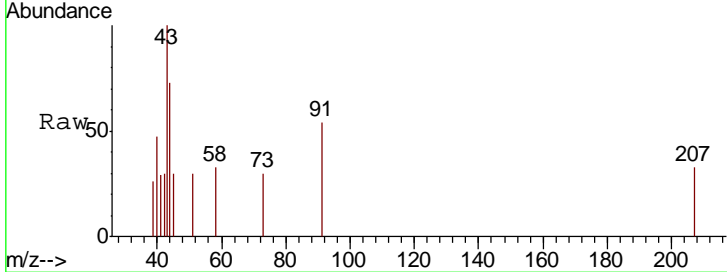




#74
 N-amyl acetate
 Concen: 2.273 ug/l
 RT: 12.01 min Scan# 3195
 Delta R.T. -0.03 min
 Lab File: VN063947.D
 Acq: 7 Oct 2020 16:55

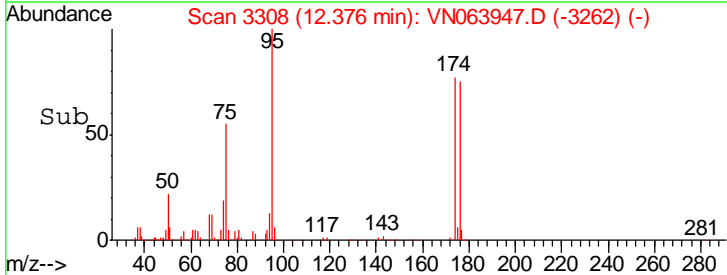
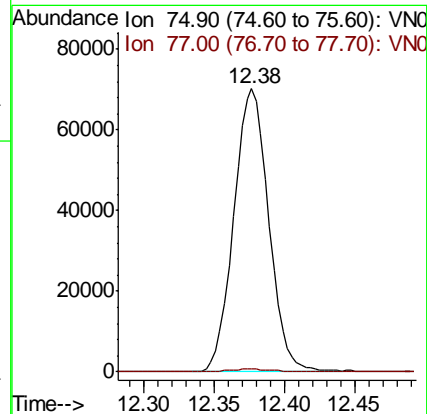
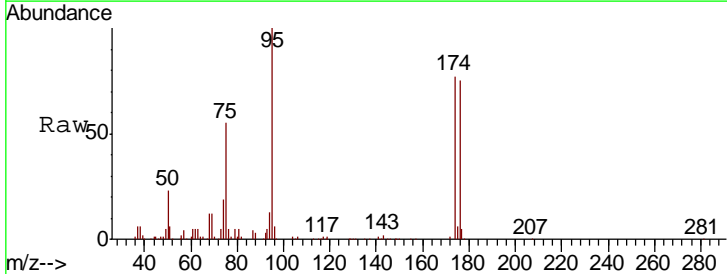
Instrument : MSVOA_N
 ClientSampled : MW-13

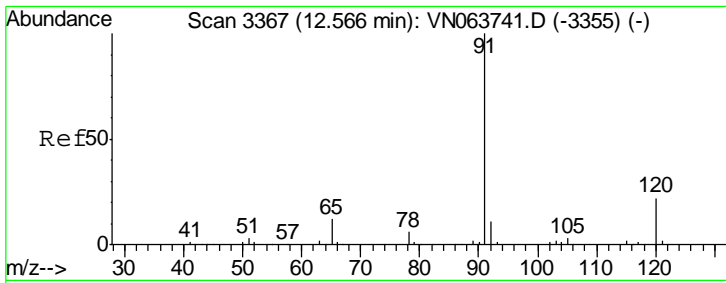
Tgt Ion	Resp	Lower	Upper
43	100		
70	0.0	29.8	44.8#
55	0.0	17.9	26.9#
61	0.0	17.0	25.4#



#76
 1,2,3-Trichloropropane
 Concen: 29.052 ug/l
 RT: 12.38 min Scan# 3308
 Delta R.T. -0.15 min
 Lab File: VN063947.D
 Acq: 7 Oct 2020 16:55

Tgt Ion	Resp	Lower	Upper
75	100		
77	1.3	0.0	0.0#

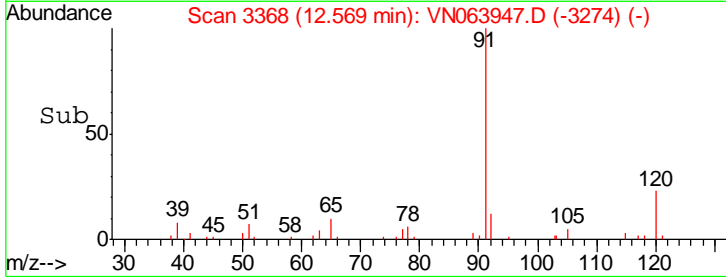
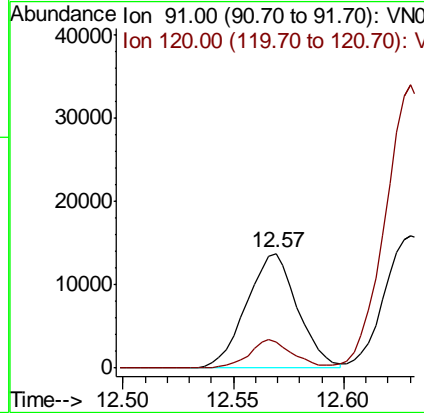
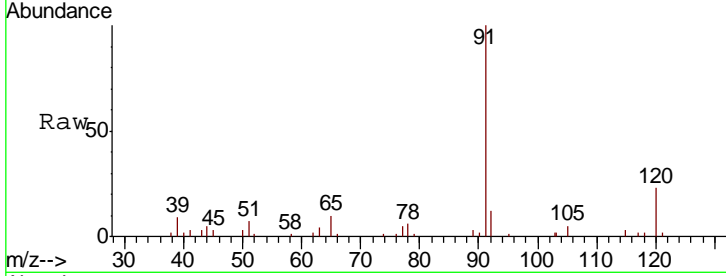




#78
 n-propylbenzene
 Concen: 1.371 ug/l
 RT: 12.57 min Scan# 3368
 Delta R.T. 0.00 min
 Lab File: VN063947.D
 Acq: 7 Oct 2020 16:55

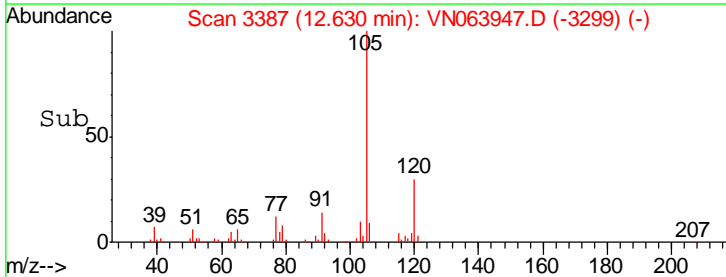
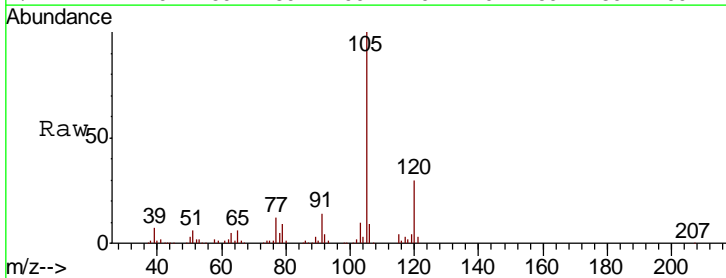
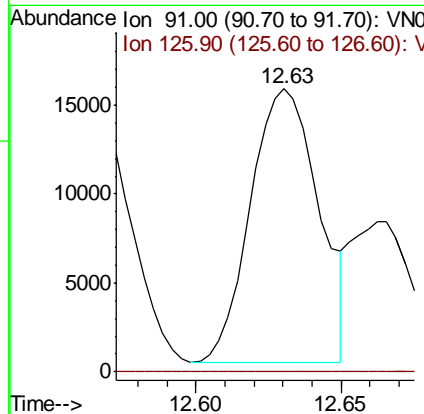
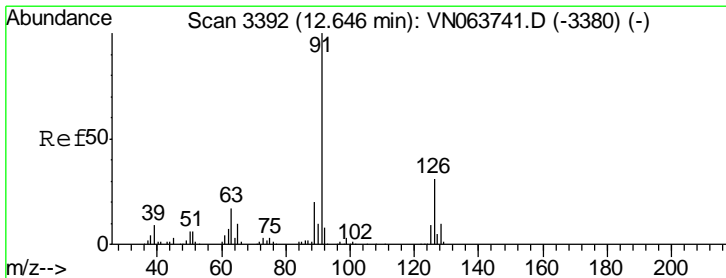
Instrument :
 MSVOA_N
 ClientSampled :
 MW-13

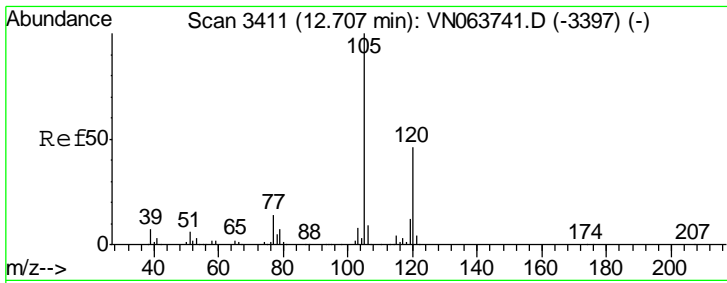
Tgt Ion: 91 Resp: 22113
 Ion Ratio Lower Upper
 91 100
 120 20.8 11.1 33.1



#79
 2-Chlorotoluene
 Concen: 2.545 ug/l
 RT: 12.63 min Scan# 3387
 Delta R.T. -0.02 min
 Lab File: VN063947.D
 Acq: 7 Oct 2020 16:55

Tgt Ion: 91 Resp: 25250
 Ion Ratio Lower Upper
 91 100
 126 0.0 15.9 47.7#

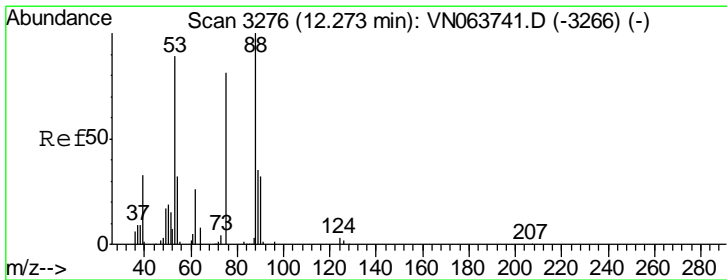
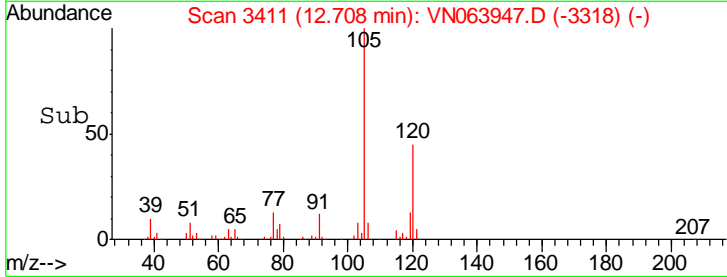
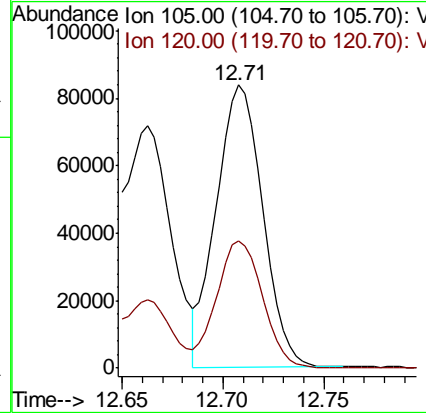
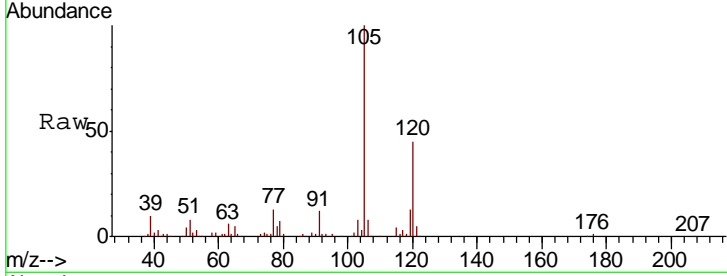




#80
 1,3,5-Trimethylbenzene
 Concen: 11.566 ug/l
 RT: 12.71 min Scan# 3411
 Delta R.T. 0.00 min
 Lab File: VN063947.D
 Acq: 7 Oct 2020 16:55

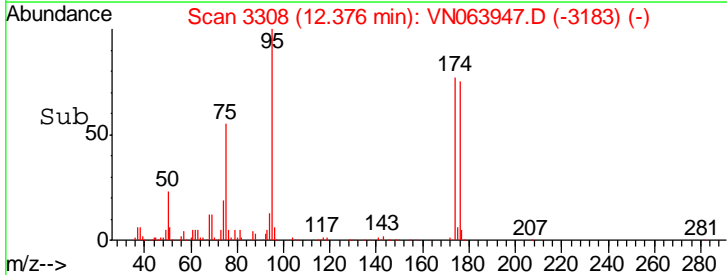
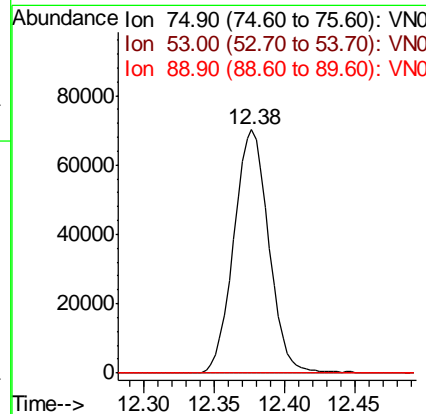
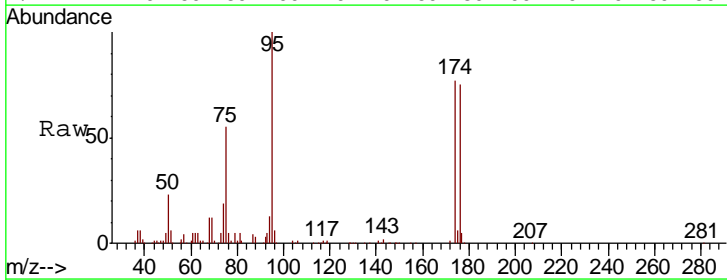
Instrument :
 MSVOA_N
 ClientSampled :
 MW-13

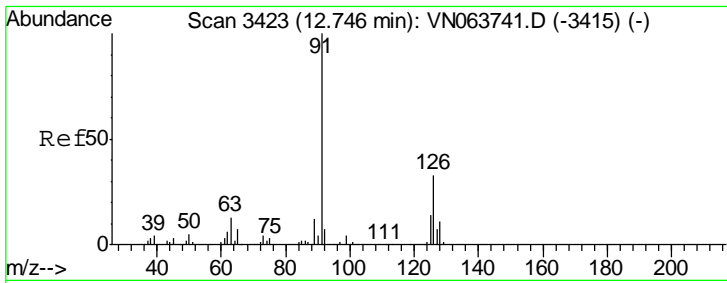
Tgt Ion	Resp	Lower	Upper
105	100		
120	44.3	23.3	69.9



#81
 trans-1,4-Dichloro-2-butene
 Concen: 83.673 ug/l
 RT: 12.38 min Scan# 3308
 Delta R.T. 0.10 min
 Lab File: VN063947.D
 Acq: 7 Oct 2020 16:55

Tgt Ion	Resp	Lower	Upper
75	100		
53	0.0	88.2	132.2#
89	0.0	36.0	54.0#

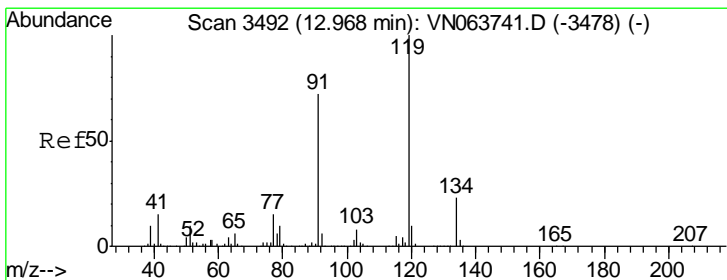
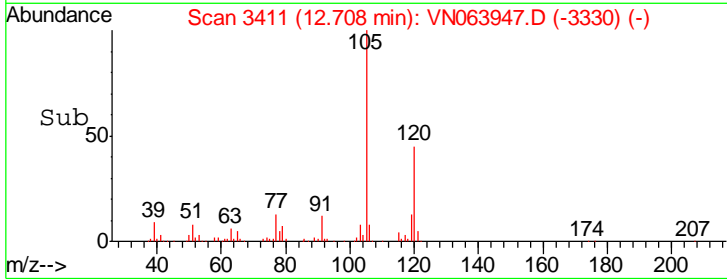
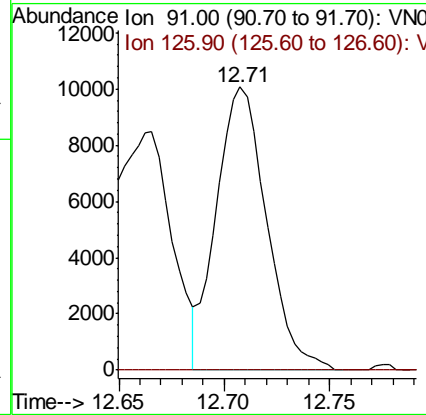
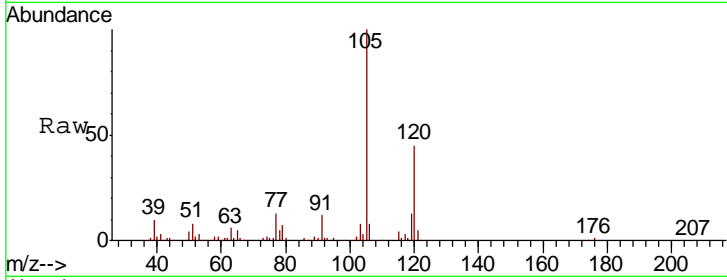




#82
 4-Chlorotoluene
 Concen: 1.613 ug/l
 RT: 12.71 min Scan# 3411
 Delta R.T. -0.04 min
 Lab File: VN063947.D
 Acq: 7 Oct 2020 16:55

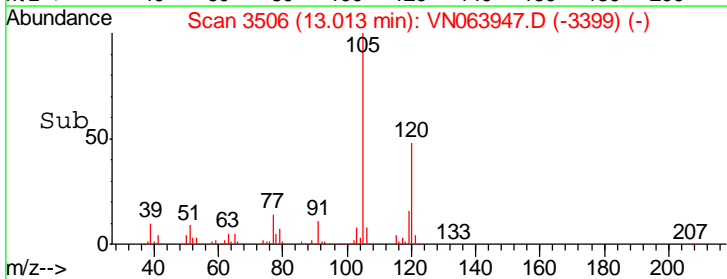
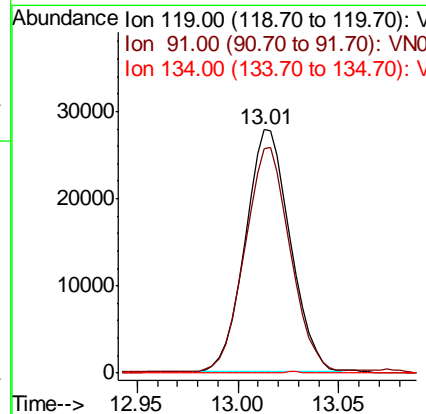
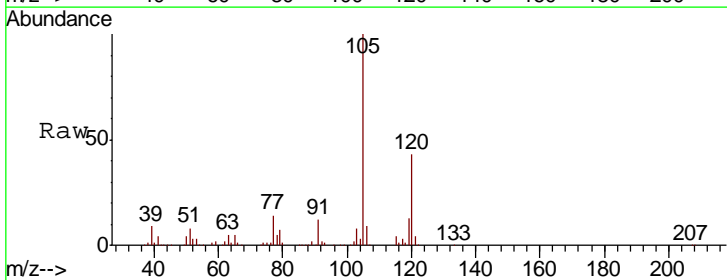
Instrument :
 MSVOA_N
 ClientSampled :
 MW-13

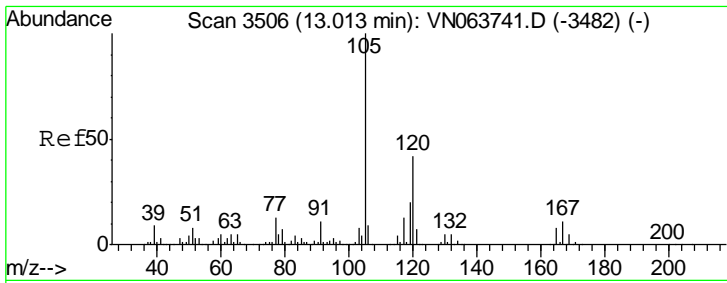
Tgt Ion	Resp	Lower	Upper
91	16609		
126	0.0	15.4	46.2#



#83
 tert-Butylbenzene
 Concen: 4.558 ug/l
 RT: 13.01 min Scan# 3506
 Delta R.T. 0.05 min
 Lab File: VN063947.D
 Acq: 7 Oct 2020 16:55

Tgt Ion	Resp	Lower	Upper
119	43353		
91	92.5	35.5	106.5
134	0.1	11.7	35.1#

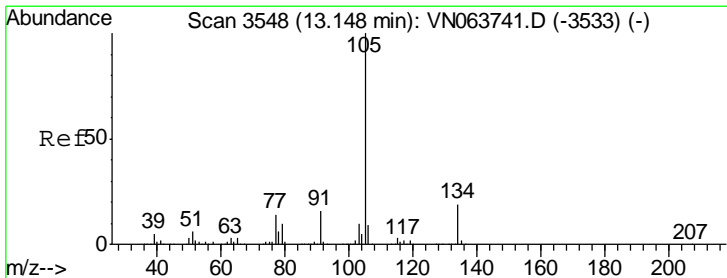
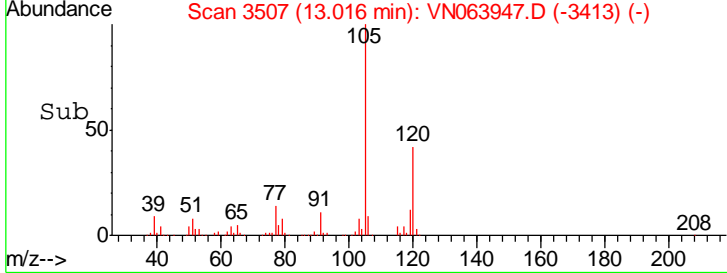
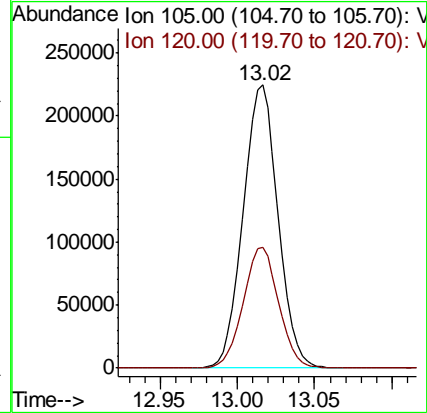
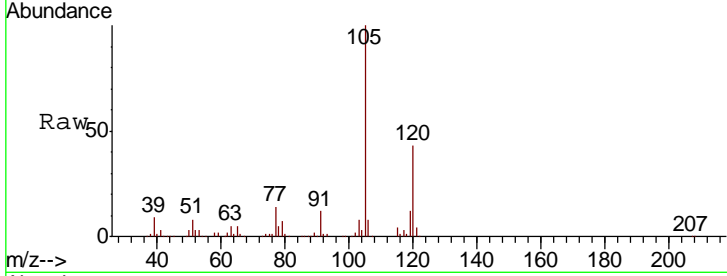




#84
 1,2,4-Trimethylbenzene
 Concen: 30.356 ug/l
 RT: 13.02 min Scan# 3507
 Delta R.T. 0.00 min
 Lab File: VN063947.D
 Acq: 7 Oct 2020 16:55

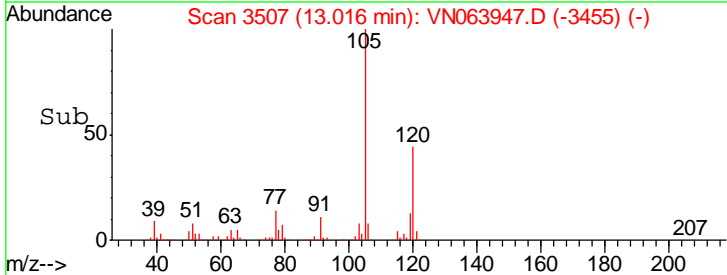
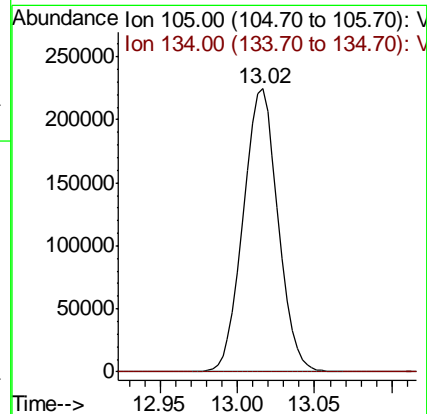
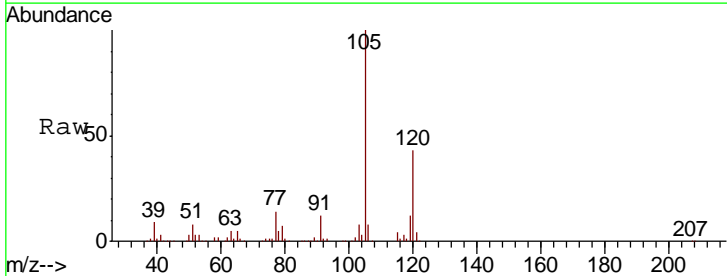
Instrument :
 MSVOA_N
 ClientSampled :
 MW-13

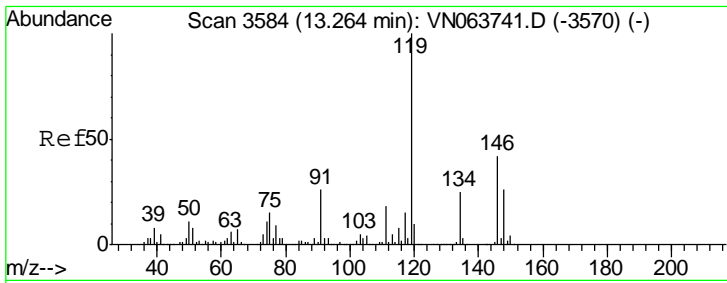
Tgt Ion	Resp	Lower	Upper
105	100		
120	43.4	20.9	62.7



#85
 sec-Butylbenzene
 Concen: 28.209 ug/l
 RT: 13.02 min Scan# 3507
 Delta R.T. -0.13 min
 Lab File: VN063947.D
 Acq: 7 Oct 2020 16:55

Tgt Ion	Resp	Lower	Upper
105	100		
134	0.0	9.5	28.5#

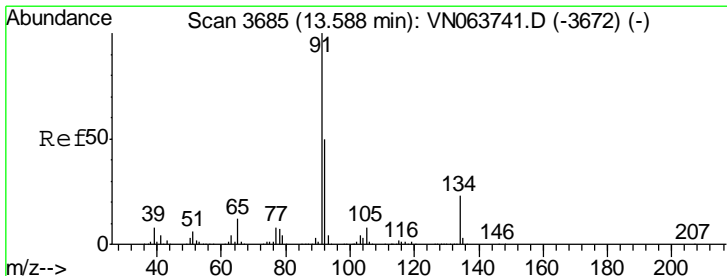
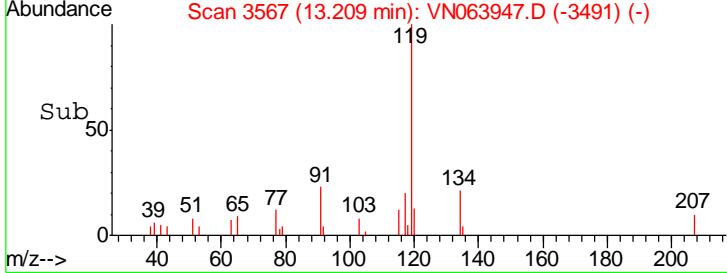
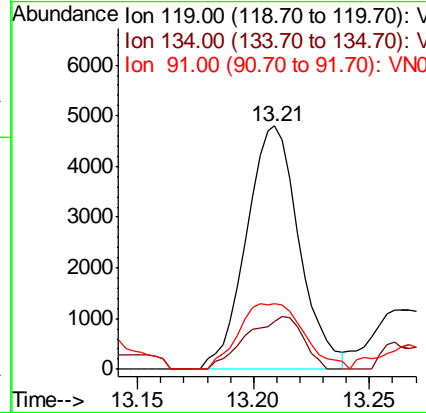
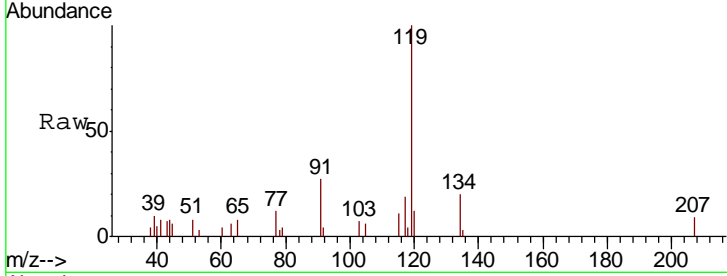




#86
 p-Isopropyltoluene
 Concen: 0.687 ug/l
 RT: 13.21 min Scan# 3567
 Delta R.T. -0.05 min
 Lab File: VN063947.D
 Acq: 7 Oct 2020 16:55

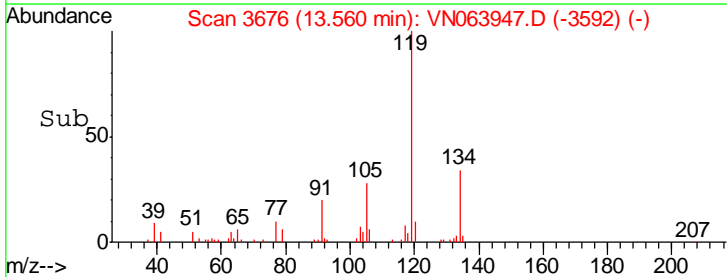
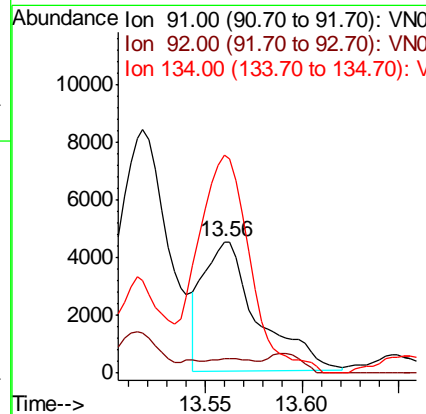
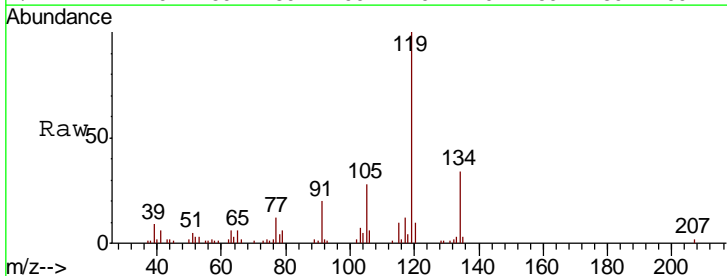
Instrument :
 MSVOA_N
 ClientSampled :
 MW-13

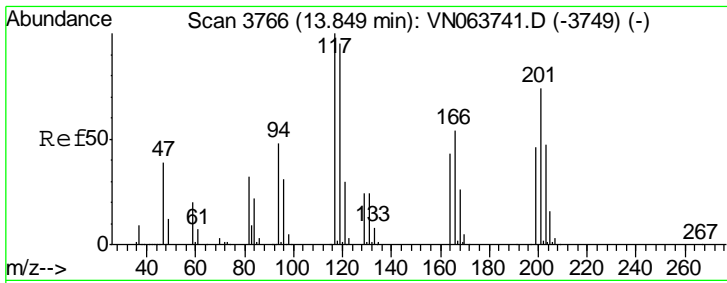
Tgt Ion	Resp	Lower	Upper
119	100		
134	23.2	12.6	37.8
91	33.1	13.4	40.2



#89
 n-Butylbenzene
 Concen: 0.860 ug/l
 RT: 13.56 min Scan# 3676
 Delta R.T. -0.03 min
 Lab File: VN063947.D
 Acq: 7 Oct 2020 16:55

Tgt Ion	Resp	Lower	Upper
91	100		
92	0.0	25.4	76.4#
134	162.2	11.7	35.1#

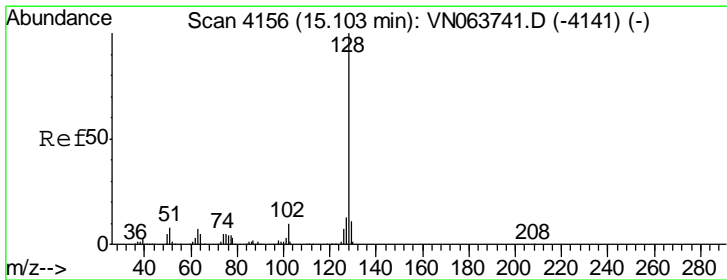
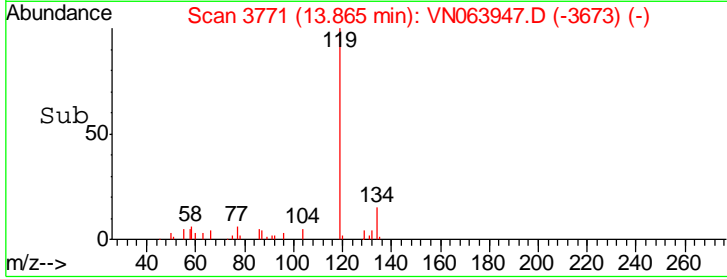
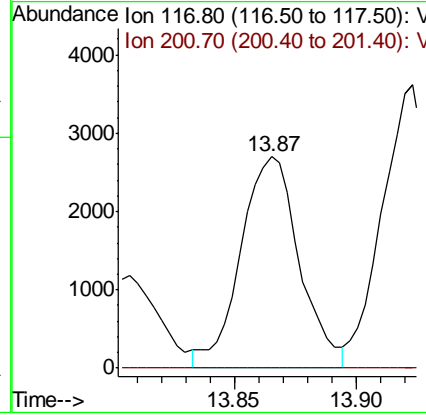
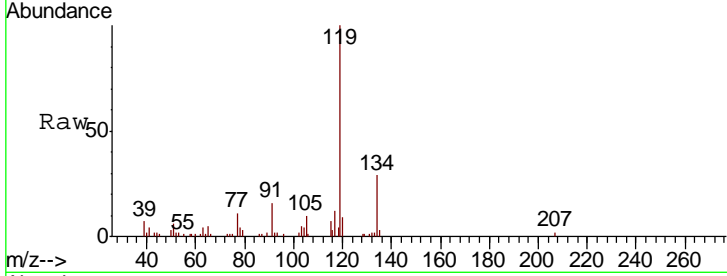




#90
Hexachloroethane
Concen: 2.105 ug/l
RT: 13.87 min Scan# 3771
Delta R.T. 0.02 min
Lab File: VN063947.D
Acq: 7 Oct 2020 16:55

Instrument :
MSVOA_N
ClientSampled :
MW-13

Tgt Ion:117 Resp: 4508
Ion Ratio Lower Upper
117 100
201 0.0 36.0 108.0#



#95
Naphthalene
Concen: 4.732 ug/l
RT: 15.11 min Scan# 4157
Delta R.T. 0.00 min
Lab File: VN063947.D
Acq: 7 Oct 2020 16:55

Tgt Ion:128 Resp: 29940
Ion Ratio Lower Upper
128 100
127 13.2 10.5 15.7
129 9.9 8.7 13.1

