

Data Path : Z:\VOASRV\HPCHEM1\MSVOA N\DATA\VN100820\  
 Data File : VN063986.D  
 Acq On : 8 Oct 2020 13:19  
 Operator : JC/MD  
 Sample : L4255-22  
 Misc : 5.00mL/MSVOA N/WATER  
 ALS Vial : 8 Sample Multiplier: 1

Instrument :  
 MSVOA\_N  
 ClientSampleId :  
 EQB-20200929

Quant Time: Oct 09 04:56:05 2020  
 Quant Method : Z:\VOASRV\HPCHEM1\MSVOA\_N\METHODS\82N093020W.M  
 Quant Title : SW846 8260  
 QLast Update : Thu Oct 01 01:46:38 2020  
 Response via : Initial Calibration

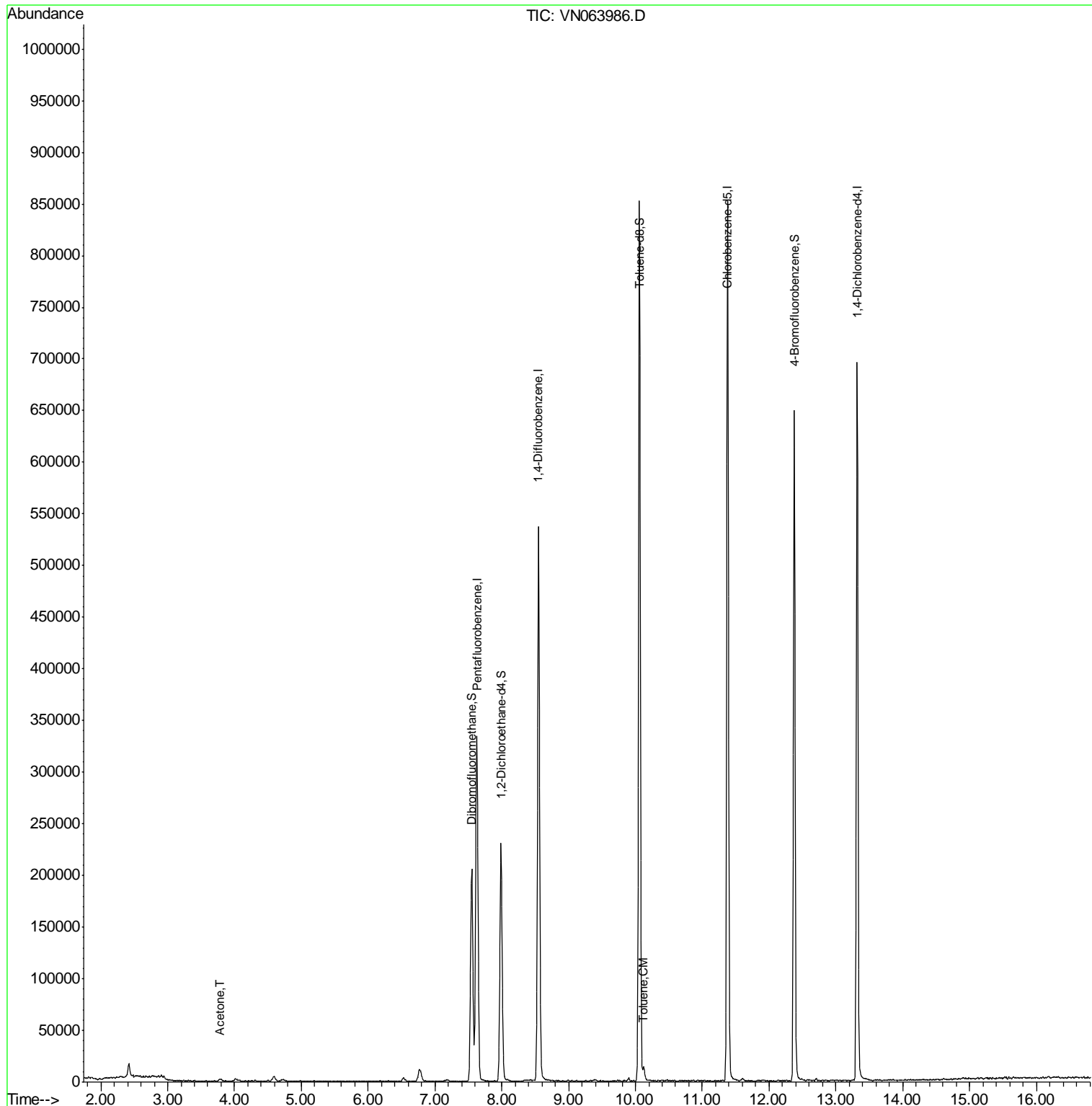
Internal Standards	R.T.	QIon	Response	Conc	Units	Dev(Min)
1) Pentafluorobenzene	7.63	168	256348	50.00	ug/l	0.00
34) 1,4-Difluorobenzene	8.55	114	454778	50.00	ug/l	0.00
63) Chlorobenzene-d5	11.38	117	465710	50.00	ug/l	0.00
72) 1,4-Dichlorobenzene-d4	13.32	152	179784	50.00	ug/l	0.00
System Monitoring Compounds						
33) 1,2-Dichloroethane-d4	7.99	65	207919	49.09	ug/l	0.00
Spiked Amount	50.000		Recovery	=	98.18%	
35) Dibromofluoromethane	7.55	113	152439	48.31	ug/l	0.00
Spiked Amount	50.000		Recovery	=	96.62%	
50) Toluene-d8	10.06	98	582624	48.70	ug/l	0.00
Spiked Amount	50.000		Recovery	=	97.40%	
62) 4-Bromofluorobenzene	12.38	95	220451	49.02	ug/l	0.00
Spiked Amount	50.000		Recovery	=	98.04%	
Target Compounds						
16) Acetone	3.78	43	4349	3.336	ug/l	98
52) Toluene	10.13	92	4045	0.497	ug/l	90

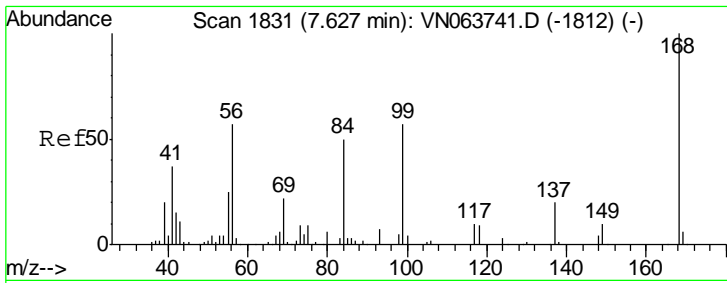
(#) = qualifier out of range (m) = manual integration (+) = signals summed

Data Path : Z:\VOASRV\HPCHEM1\MSVOA N\DATA\VN100820\  
 Data File : VN063986.D  
 Acq On : 8 Oct 2020 13:19  
 Operator : JC/MD  
 Sample : L4255-22  
 Misc : 5.00mL/MSVOA N/WATER  
 ALS Vial : 8 Sample Multiplier: 1

Instrument :  
 MSVOA\_N  
 ClientSampleId :  
 EQB-20200929

Quant Time: Oct 09 04:56:05 2020  
 Quant Method : Z:\VOASRV\HPCHEM1\MSVOA\_N\METHODS\82N093020W.M  
 Quant Title : SW846 8260  
 QLast Update : Thu Oct 01 01:46:38 2020  
 Response via : Initial Calibration

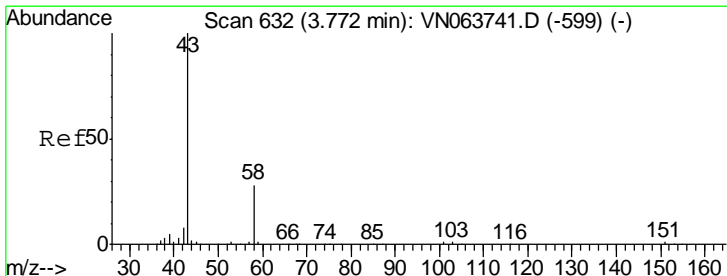
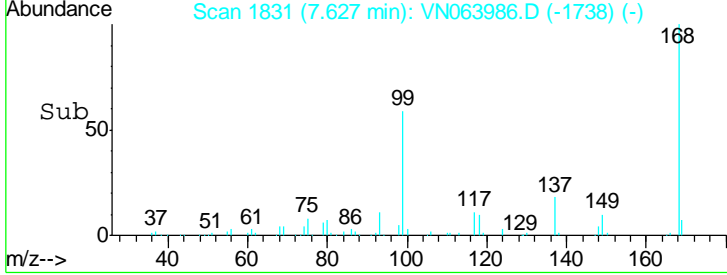
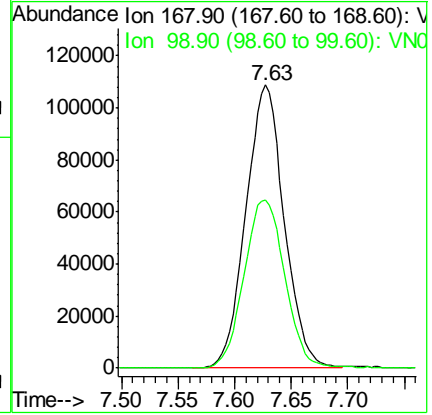
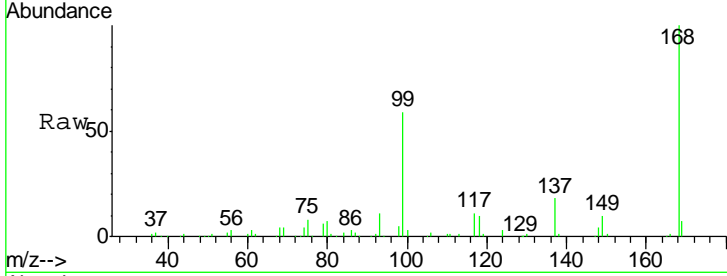




#1  
 Pentafluorobenzene  
 Concen: 50.000 ug/l  
 RT: 7.63 min Scan# 1831  
 Delta R.T. 0.00 min  
 Lab File: VN063986.D  
 Acq: 8 Oct 2020 13:19

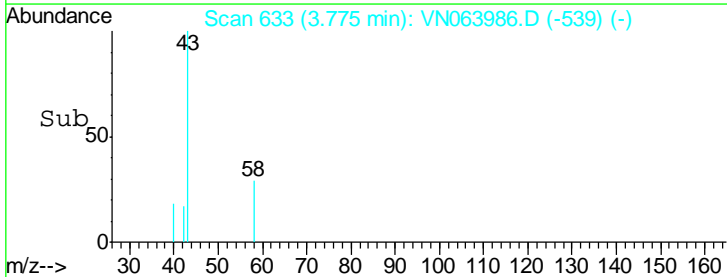
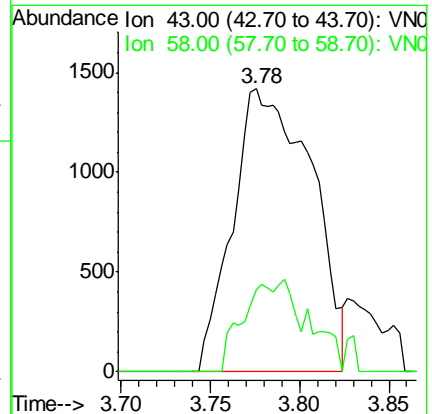
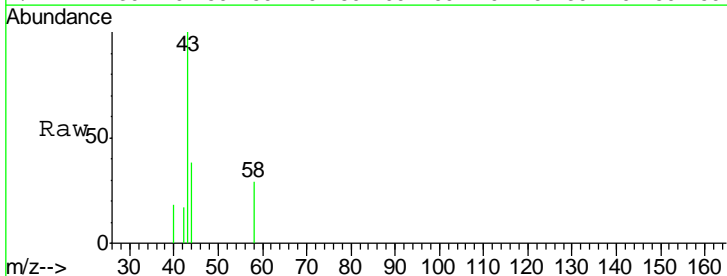
Instrument : MSVOA\_N  
 ClientSampled : EQB-20200929

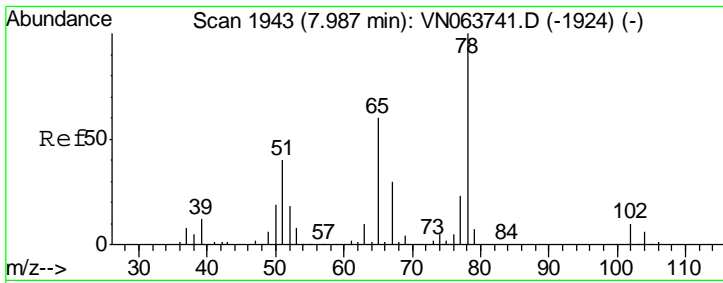
Tgt Ion	Resp	Lower	Upper
168	100		
99	59.2	51.8	77.6



#16  
 Acetone  
 Concen: 3.336 ug/l  
 RT: 3.78 min Scan# 633  
 Delta R.T. 0.00 min  
 Lab File: VN063986.D  
 Acq: 8 Oct 2020 13:19

Tgt Ion	Resp	Lower	Upper
43	100		
58	29.1	22.3	33.5

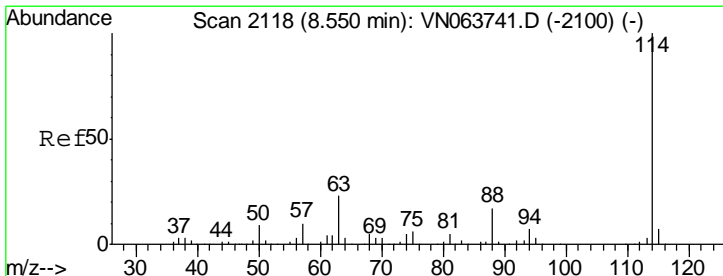
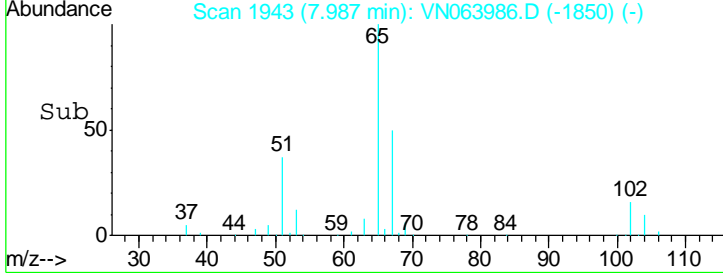
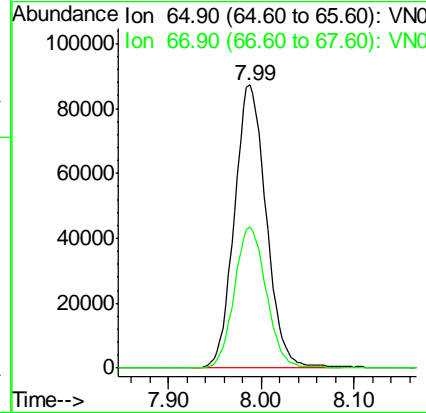
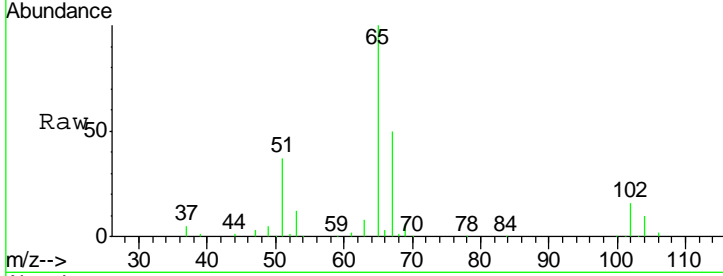




#33  
 1,2-Dichloroethane-d4  
 Concen: 49.095 ug/l  
 RT: 7.99 min Scan# 1943  
 Delta R.T. 0.00 min  
 Lab File: VN063986.D  
 Acq: 8 Oct 2020 13:19

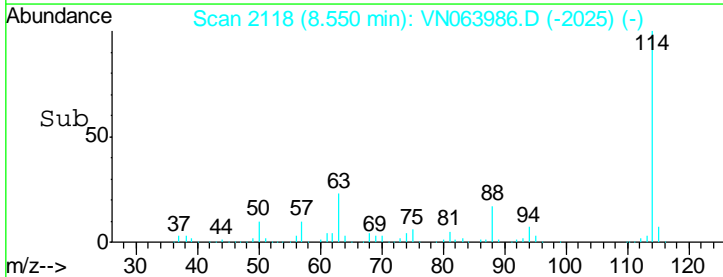
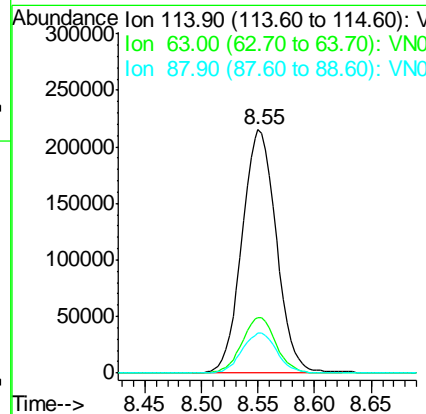
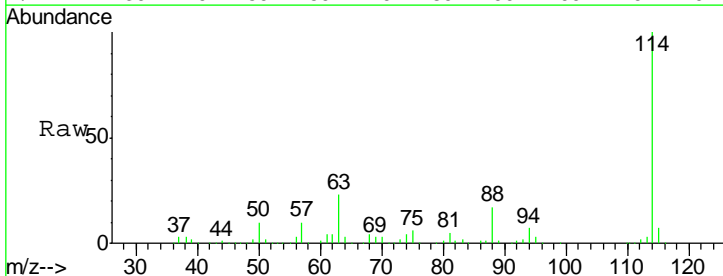
Instrument :  
 MSVOA\_N  
 ClientSampleId :  
 EQB-20200929

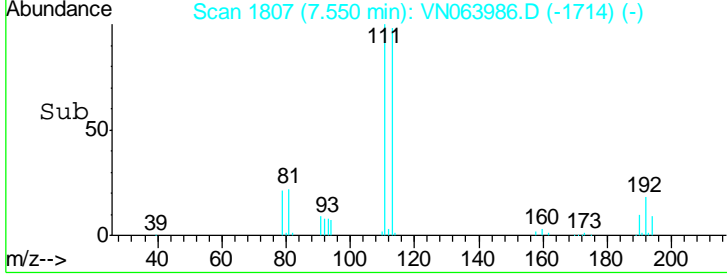
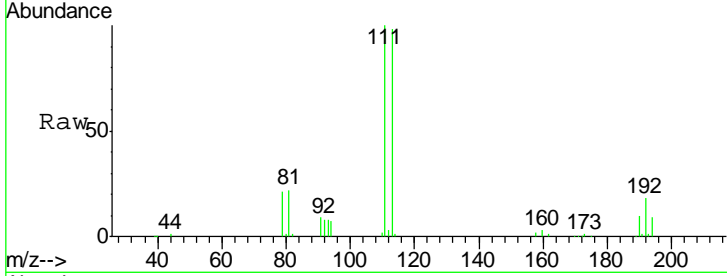
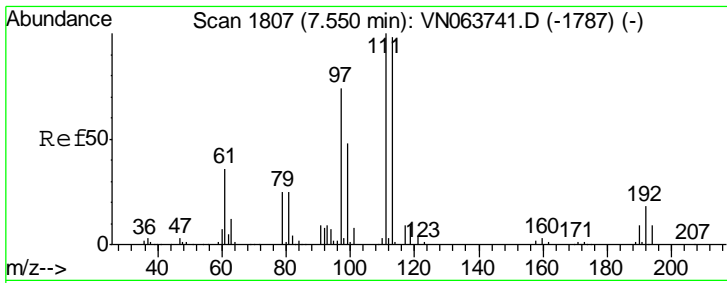
Tgt Ion	Resp	Lower	Upper
65	100		
67	49.7	0.0	99.6



#34  
 1,4-Difluorobenzene  
 Concen: 50.000 ug/l  
 RT: 8.55 min Scan# 2118  
 Delta R.T. 0.00 min  
 Lab File: VN063986.D  
 Acq: 8 Oct 2020 13:19

Tgt Ion	Resp	Lower	Upper
114	100		
63	23.0	0.0	45.0
88	16.5	0.0	34.0

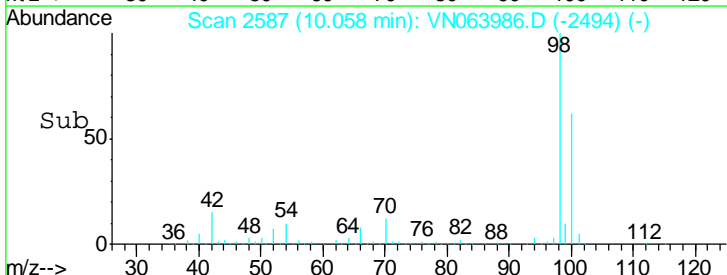
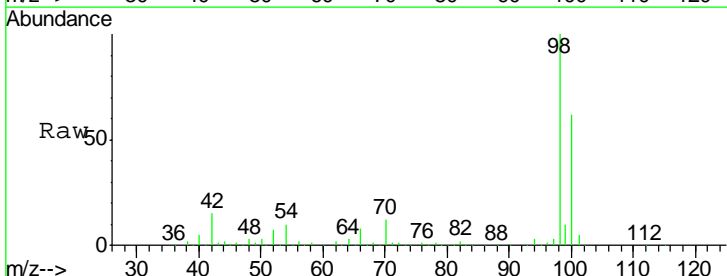
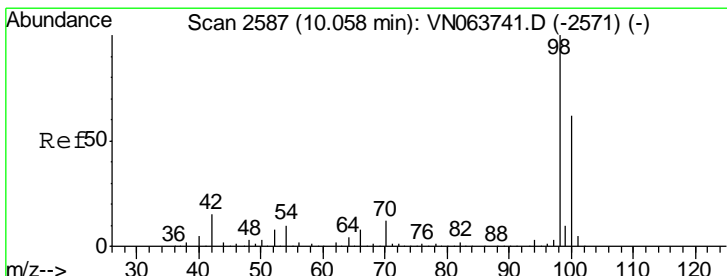
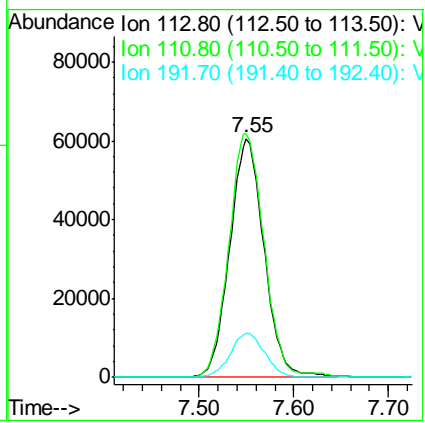




#35  
 Dibromofluoromethane  
 Concen: 48.308 ug/l  
 RT: 7.55 min Scan# 1807  
 Delta R.T. 0.00 min  
 Lab File: VN063986.D  
 Acq: 8 Oct 2020 13:19

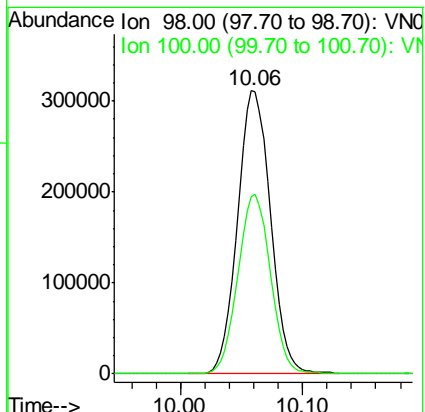
Instrument :  
 MSVOA\_N  
 ClientSampled :  
 EQB-20200929

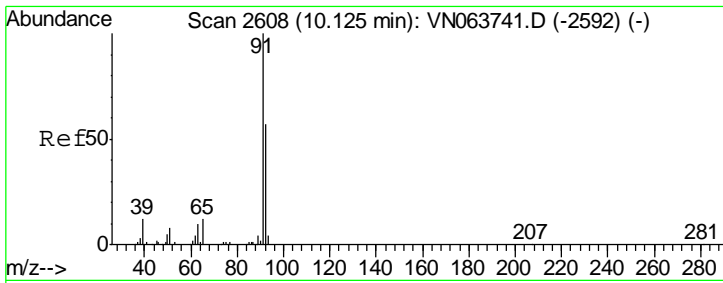
Tgt Ion	Resp	Lower	Upper
113	152439		
111	103.9	81.8	122.8
192	18.6	14.2	21.2



#50  
 Toluene-d8  
 Concen: 48.704 ug/l  
 RT: 10.06 min Scan# 2587  
 Delta R.T. 0.00 min  
 Lab File: VN063986.D  
 Acq: 8 Oct 2020 13:19

Tgt Ion	Resp	Lower	Upper
98	582624		
100	62.8	49.8	74.6

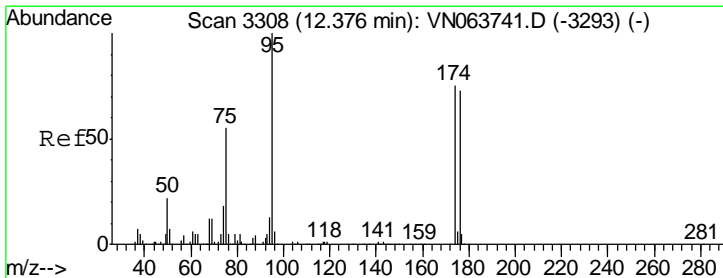
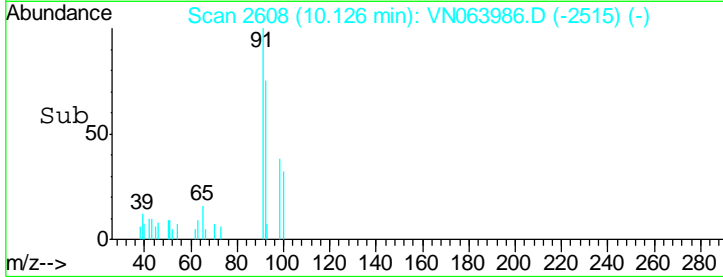
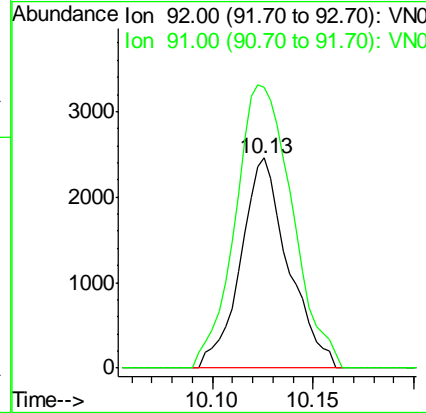
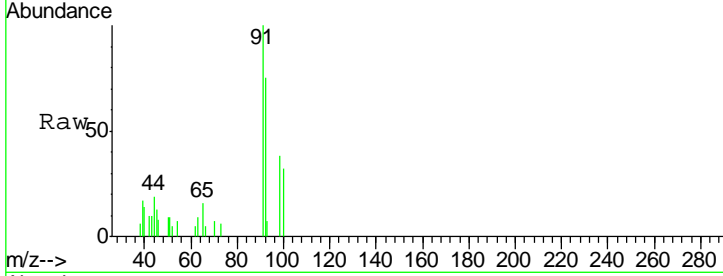




#52  
 Toluene  
 Concen: 0.497 ug/l  
 RT: 10.13 min Scan# 2608  
 Delta R.T. 0.00 min  
 Lab File: VN063986.D  
 Acq: 8 Oct 2020 13:19

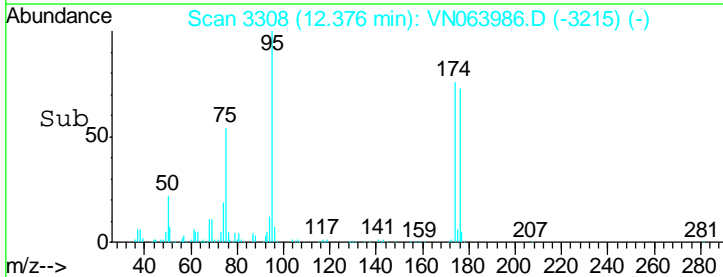
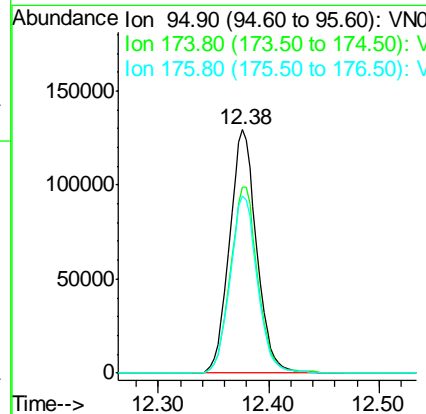
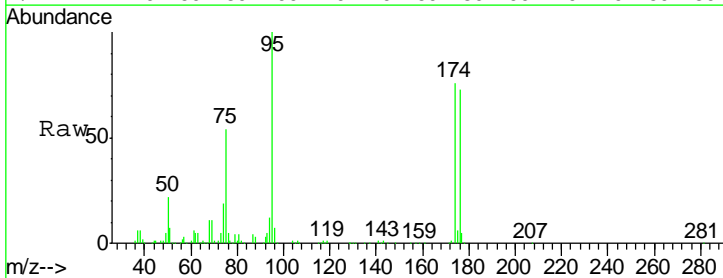
Instrument :  
 MSVOA\_N  
 ClientSampled :  
 EQB-20200929

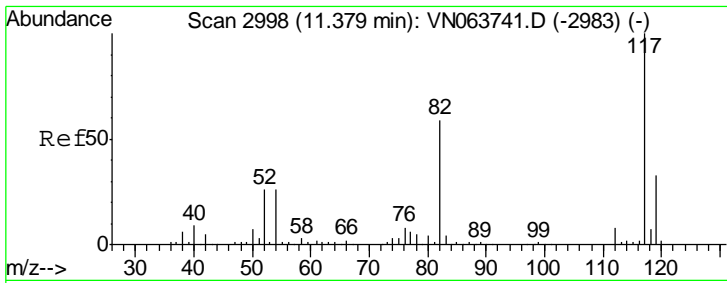
Tgt Ion	Resp	Lower	Upper
92	4045		
92	100		
91	161.7	140.6	210.8



#62  
 4-Bromofluorobenzene  
 Concen: 49.024 ug/l  
 RT: 12.38 min Scan# 3308  
 Delta R.T. 0.00 min  
 Lab File: VN063986.D  
 Acq: 8 Oct 2020 13:19

Tgt Ion	Resp	Lower	Upper
95	220451		
95	100		
174	76.9	0.0	150.6
176	72.8	0.0	145.4

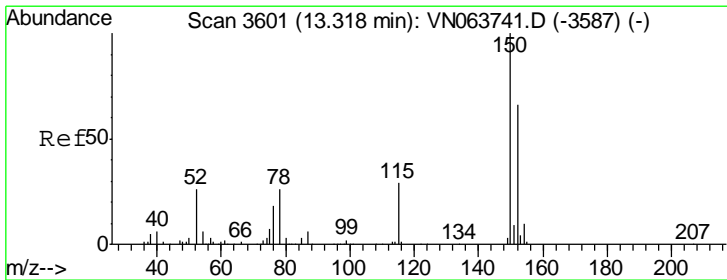
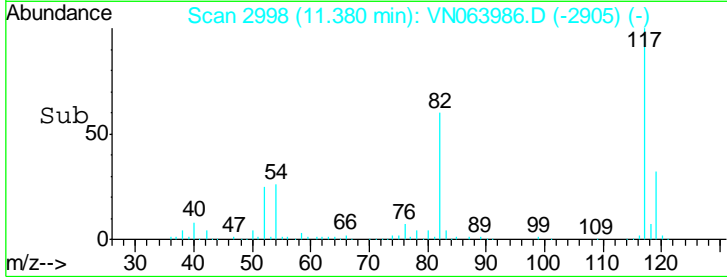
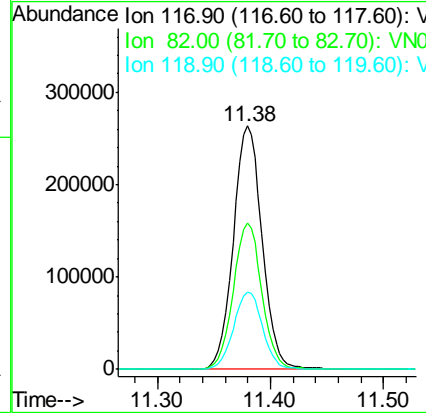
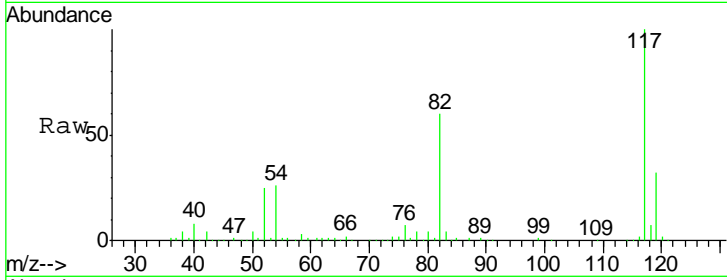




#63  
 Chlorobenzene-d5  
 Concen: 50.000 ug/l  
 RT: 11.38 min Scan# 2998  
 Delta R.T. 0.00 min  
 Lab File: VN063986.D  
 Acq: 8 Oct 2020 13:19

Instrument :  
 MSVOA\_N  
 ClientSampled :  
 EQB-20200929

Tgt Ion	Resp	Lower	Upper
117	465710		
82	60.0	47.4	71.2
119	31.6	26.4	39.6



#72  
 1,4-Dichlorobenzene-d4  
 Concen: 50.000 ug/l  
 RT: 13.32 min Scan# 3601  
 Delta R.T. 0.00 min  
 Lab File: VN063986.D  
 Acq: 8 Oct 2020 13:19

Tgt Ion	Resp	Lower	Upper
152	179784		
115	62.0	31.3	93.8
150	157.0	0.0	341.8

