

Data Path : Z:\voasrv\HPCHEM1\MSVOA_N\Data\VN100824\
 Data File : VN084348.D
 Acq On : 08 Oct 2024 14:53
 Operator : JC\MD
 Sample : P4334-01
 Misc : 5.0mL/MSVOA_N/WATER
 ALS Vial : 13 Sample Multiplier: 1

Instrument :
 MSVOA_N
 ClientSampleId :

Quant Time: Oct 09 02:30:43 2024
 Quant Method : Z:\voasrv\HPCHEM1\MSVOA_N\methods\624N100824W.M
 Quant Title : METHOD 624 VOLATILE ORGANIC ANALYSIS
 QLast Update : Wed Oct 09 02:21:08 2024
 Response via : Initial Calibration

Compound	R.T.	QIon	Response	Conc	Units	Dev(Min)

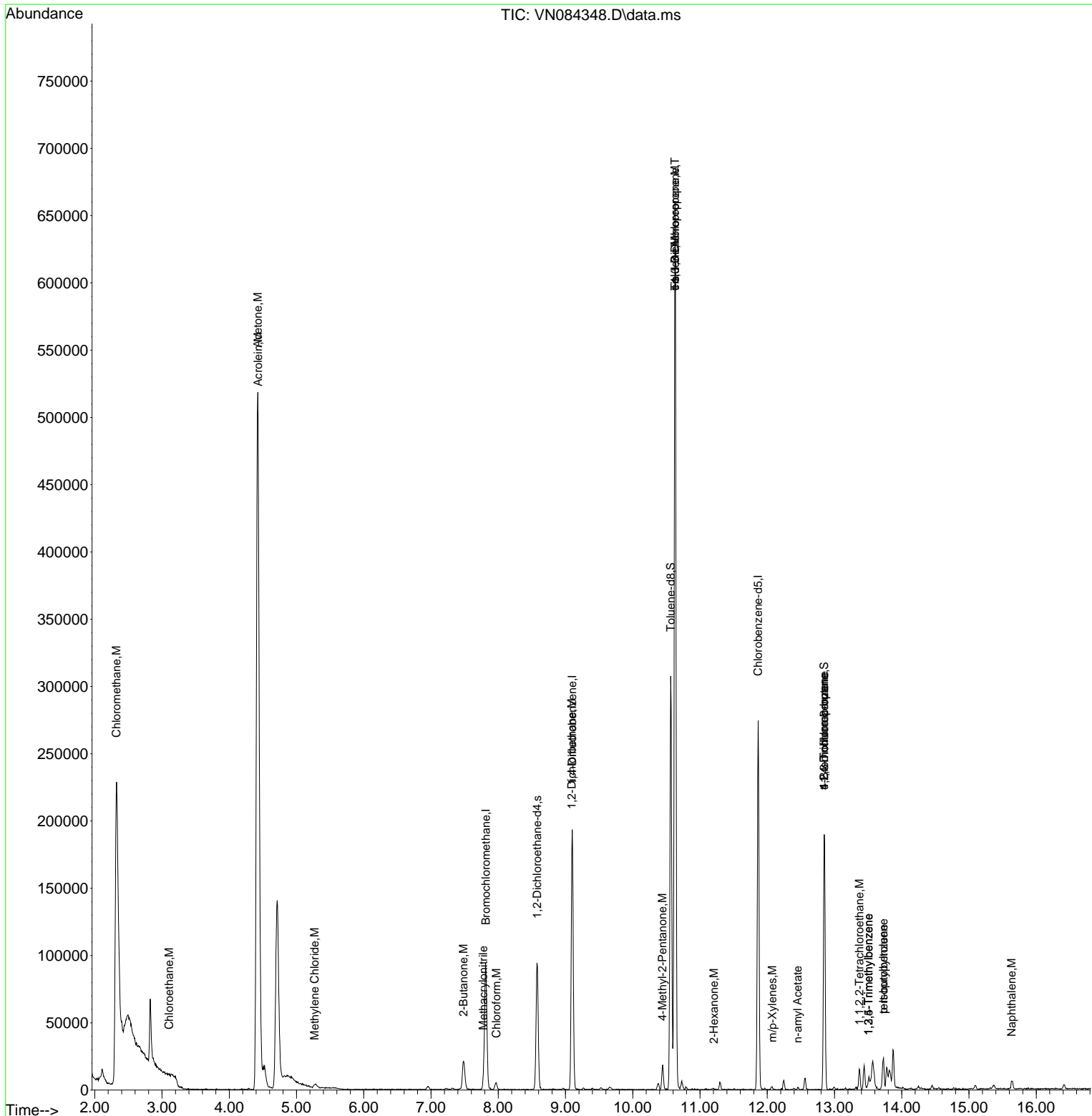
Internal Standards						
1) Bromochloromethane	7.818	128	31390	30.000	ug/l	0.00
28) 1,4-Difluorobenzene	9.100	114	165437	30.000	ug/l	0.00
57) Chlorobenzene-d5	11.865	117	154322	30.000	ug/l	0.00
System Monitoring Compounds						
27) 1,2-Dichloroethane-d4	8.576	65	79279	31.371	ug/l	0.00
Spiked Amount	30.000	Range 91 - 110	Recovery	=	104.567%	
60) 4-Bromofluorobenzene	12.847	95	69842	27.422	ug/l	0.00
Spiked Amount	30.000	Range 63 - 112	Recovery	=	91.400%	
63) Toluene-d8	10.565	98	210498	29.444	ug/l	0.00
Spiked Amount	30.000	Range 91 - 112	Recovery	=	98.133%	
Target Compounds						
						Qvalue
3) Chloromethane	2.324	50	9357	4.290	ug/l #	42
6) Chloroethane	3.106	64	456	0.325	ug/l #	40
13) Acrolein	4.430	56	134	0.295	ug/l #	1
15) Acetone	4.424	58	309723	986.299	ug/l	97
18) Methylene Chloride	5.271	84	843	0.383	ug/l #	29
25) Chloroform	7.971	83	5224	1.320	ug/l	98
30) 2-Butanone	7.482	43	36140	24.994	ug/l	99
35) Methacrylonitrile	7.777	41	1079	0.699	ug/l #	43
36) 1,2-Dichloroethane	9.094	62	5898	2.081	ug/l #	75
47) n-amyl Acetate	12.453	43	1098	0.264	ug/l #	49
48) t-1,3-Dichloropropene	10.629	75	3539	1.113	ug/l #	1
49) cis-1,3-Dichloropropene	10.629	75	3539	1.062	ug/l #	1
58) 4-Methyl-2-Pentanone	10.441	43	12613	4.387	ug/l	97
59) 2-Hexanone	11.206	43	1010	0.473	ug/l #	47
62) Toluene	10.629	91	495692	54.868	ug/l	99
67) m/p-Xylenes	12.076	106	921	0.247	ug/l #	69
71) 1,1,2,2-Tetrachloroethane	13.370	83	1178	0.416	ug/l #	54
72) 1,2,3-Trichloropropane	12.847	75	35762	14.732	ug/l	1
76) 1,3,5-Trimethylbenzene	13.506	105	2122	0.275	ug/l	58
77) t-1,4-Dichloro-2-butene	12.847	75	35762	34.476	ug/l #	12
79) tert-butylbenzene	13.729	119	10396	1.580	ug/l	59
80) 1,2,4-Trimethylbenzene	13.506	105	2122	0.271	ug/l	61
82) p-Isopropyltoluene	13.729	119	10396	1.363	ug/l	98
91) Naphthalene	15.635	128	4046	0.576	ug/l #	92

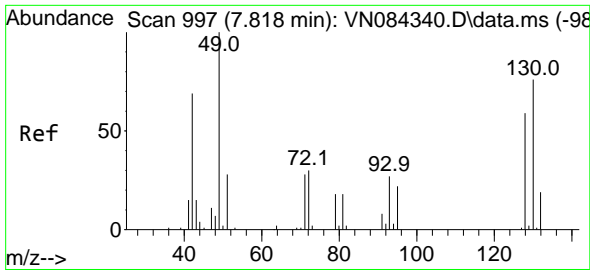
(#) = qualifier out of range (m) = manual integration (+) = signals summed

Data Path : Z:\voasrv\HPCHEM1\MSVOA_N\Data\VN100824\
 Data File : VN084348.D
 Acq On : 08 Oct 2024 14:53
 Operator : JC\MD
 Sample : P4334-01
 Misc : 5.0mL/MSVOA_N/WATER
 ALS Vial : 13 Sample Multiplier: 1

Instrument :
 MSVOA_N
 ClientSampleId :

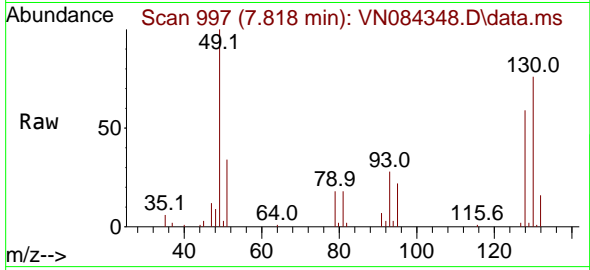
Quant Time: Oct 09 02:30:43 2024
 Quant Method : Z:\voasrv\HPCHEM1\MSVOA_N\methods\624N100824W.M
 Quant Title : METHOD 624 VOLATILE ORGANIC ANALYSIS
 QLast Update : Wed Oct 09 02:21:08 2024
 Response via : Initial Calibration



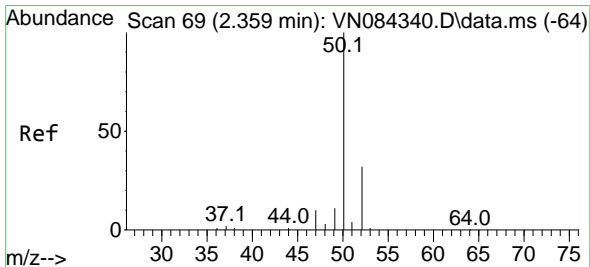
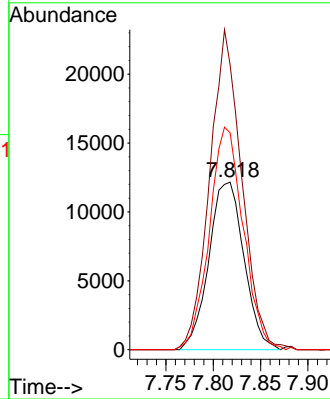
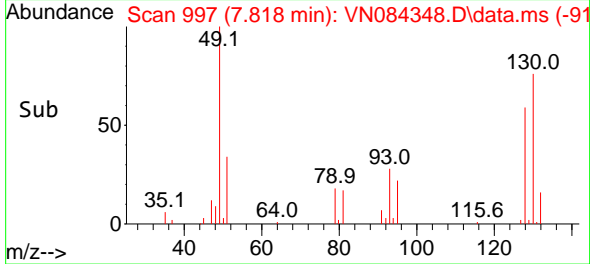


#1
 Bromochloromethane
 Concen: 30.000 ug/l
 RT: 7.818 min Scan# 997
 Delta R.T. -0.000 min
 Lab File: VN084348.D
 Acq: 08 Oct 2024 14:53

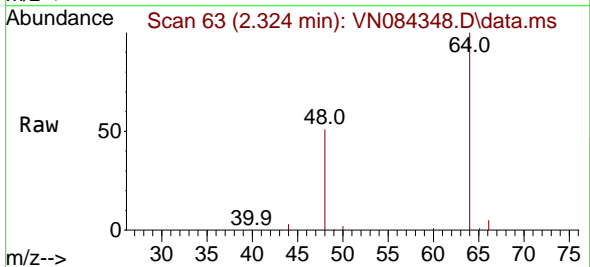
Instrument : MSVOA_N
 ClientSampleId :



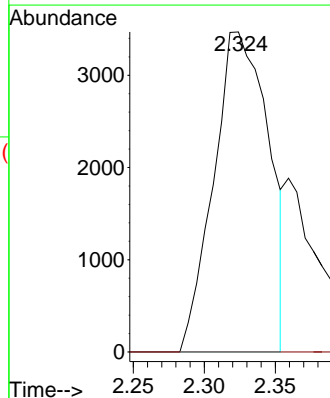
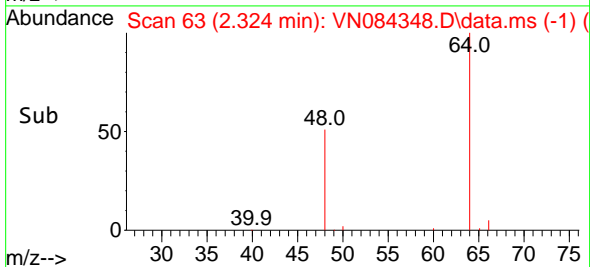
Tgt Ion:128 Resp: 31390
 Ion Ratio Lower Upper
 128 100
 49 173.9 0.0 430.0
 130 128.3 0.0 329.8

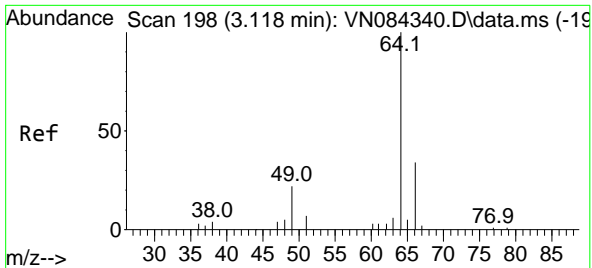


#3
 Chloromethane
 Concen: 4.290 ug/l
 RT: 2.324 min Scan# 63
 Delta R.T. -0.035 min
 Lab File: VN084348.D
 Acq: 08 Oct 2024 14:53



Tgt Ion: 50 Resp: 9357
 Ion Ratio Lower Upper
 50 100
 52 0.0 25.8 38.6#

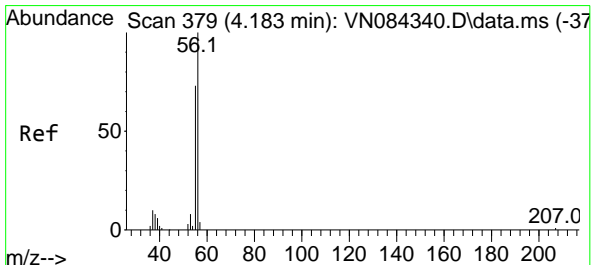
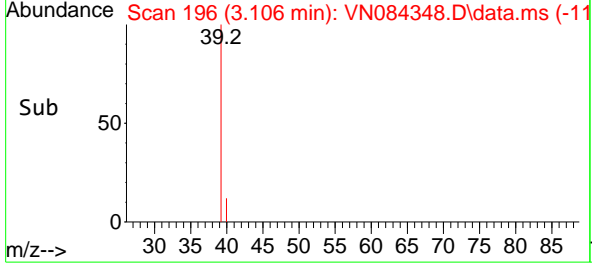
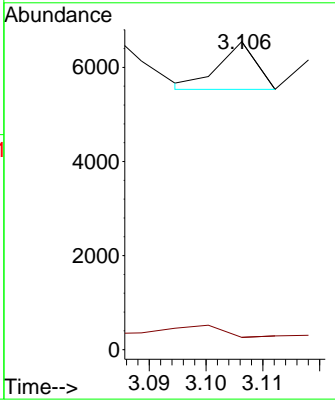
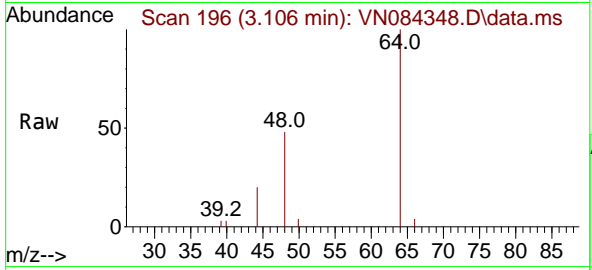




#6
 Chloroethane
 Concen: 0.325 ug/l
 RT: 3.106 min Scan# 196
 Delta R.T. -0.012 min
 Lab File: VN084348.D
 Acq: 08 Oct 2024 14:53

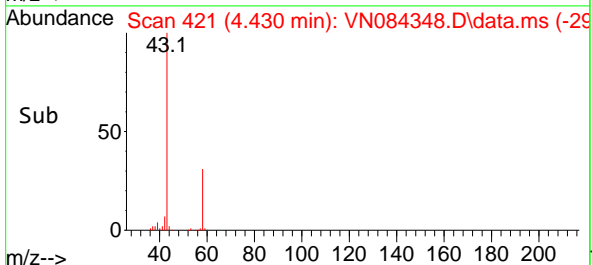
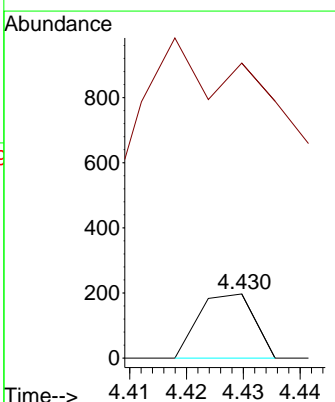
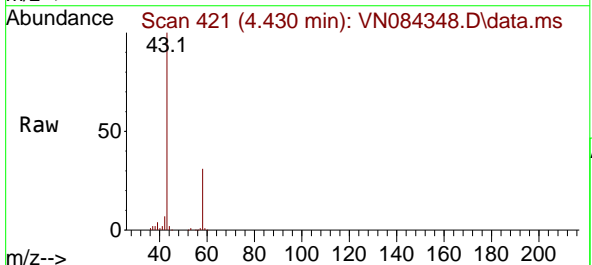
Instrument : MSVOA_N
 ClientSampleId :

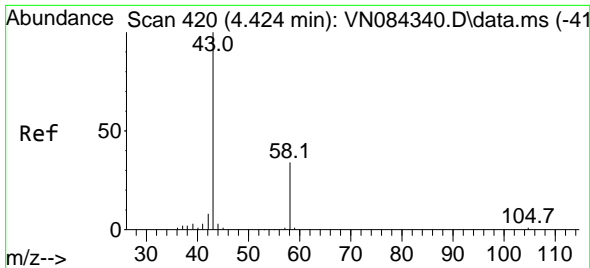
Tgt Ion	Resp	Lower	Upper
64	100		
66	0.0	27.7	41.5#



#13
 Acrolein
 Concen: 0.295 ug/l
 RT: 4.430 min Scan# 421
 Delta R.T. 0.247 min
 Lab File: VN084348.D
 Acq: 08 Oct 2024 14:53

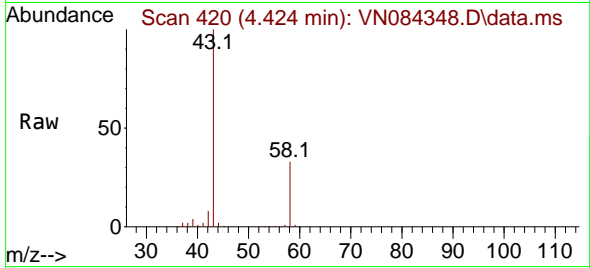
Tgt Ion	Resp	Lower	Upper
56	100		
55	348.5	56.4	84.6#



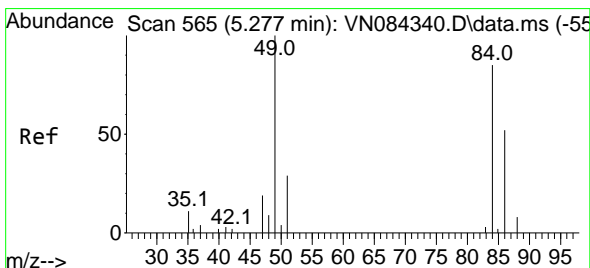
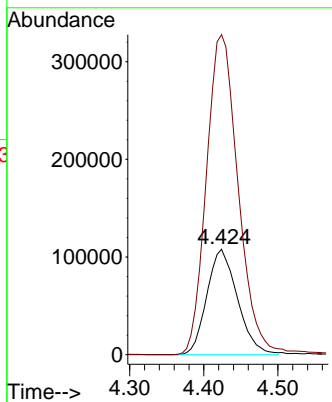
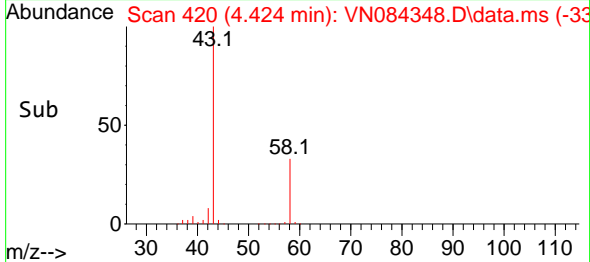


#15
 Acetone
 Concen: 986.299 ug/l
 RT: 4.424 min Scan# 41
 Delta R.T. -0.000 min
 Lab File: VN084348.D
 Acq: 08 Oct 2024 14:53

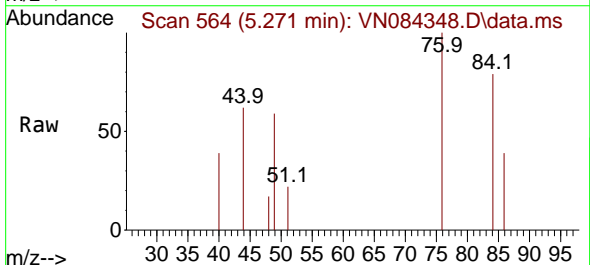
Instrument :
 MSVOA_N
 ClientSampleId :



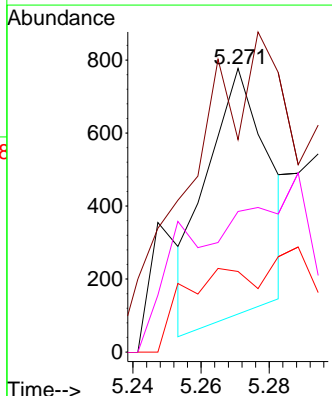
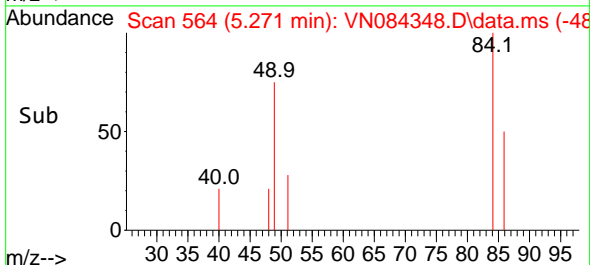
Tgt Ion: 58 Resp: 309723
 Ion Ratio Lower Upper
 58 100
 43 303.1 237.5 356.3

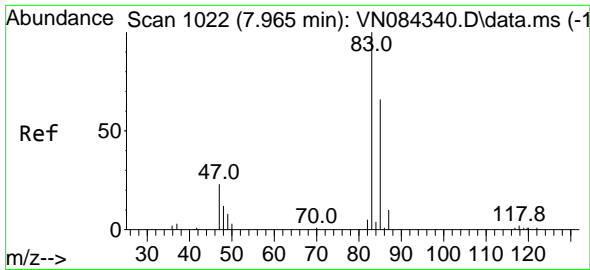


#18
 Methylene Chloride
 Concen: 0.383 ug/l
 RT: 5.271 min Scan# 564
 Delta R.T. -0.006 min
 Lab File: VN084348.D
 Acq: 08 Oct 2024 14:53



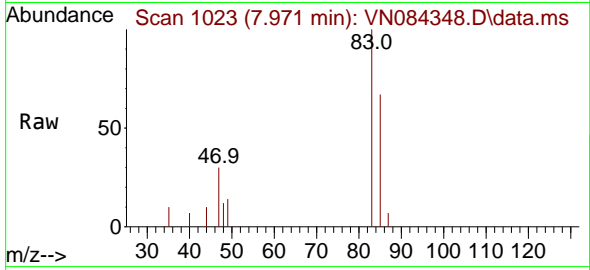
Tgt Ion: 84 Resp: 843
 Ion Ratio Lower Upper
 84 100
 49 34.0 94.6 142.0#
 51 6.8 27.3 40.9#
 86 5.5 49.4 74.0#



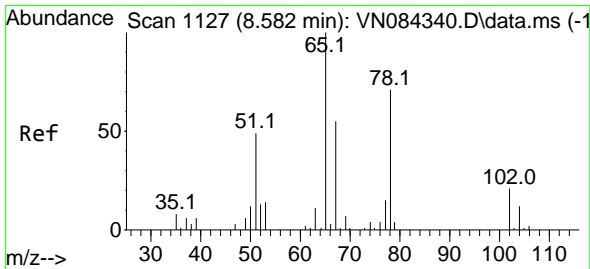
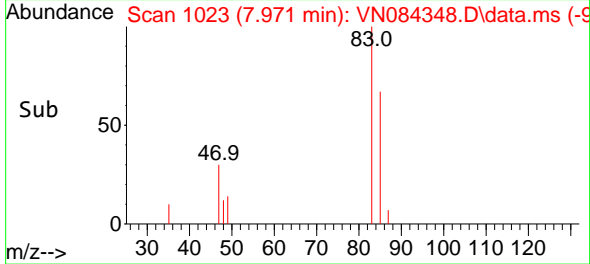
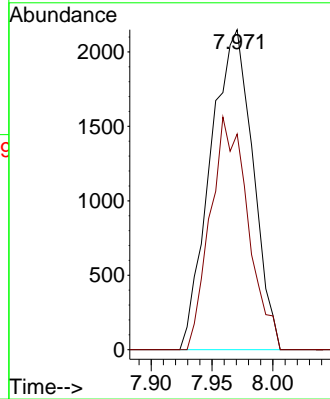


#25
 Chloroform
 Concen: 1.320 ug/l
 RT: 7.971 min Scan# 1023
 Delta R.T. 0.006 min
 Lab File: VN084348.D
 Acq: 08 Oct 2024 14:53

Instrument : MSVOA_N
 ClientSampleId :

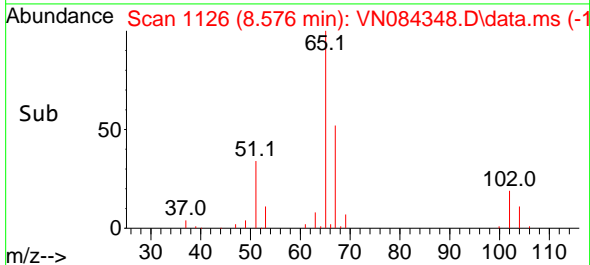
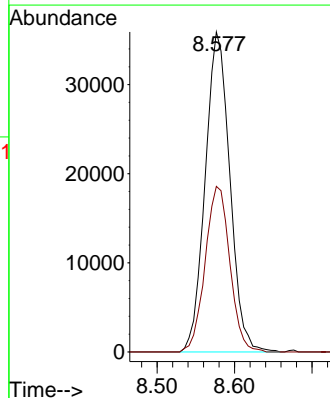
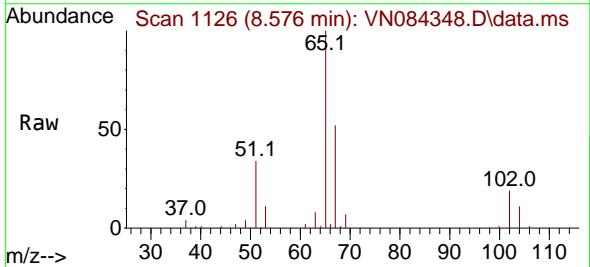


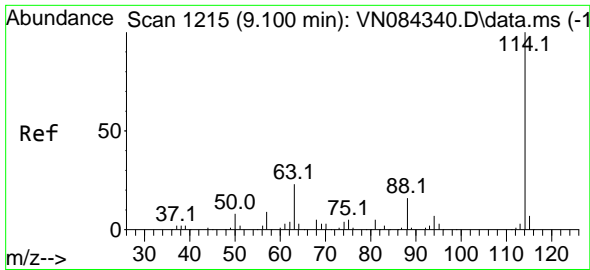
Tgt Ion: 83 Resp: 5224
 Ion Ratio Lower Upper
 83 100
 85 67.4 52.4 78.6



#27
 1,2-Dichloroethane-d4
 Concen: 31.371 ug/l
 RT: 8.576 min Scan# 1126
 Delta R.T. -0.006 min
 Lab File: VN084348.D
 Acq: 08 Oct 2024 14:53

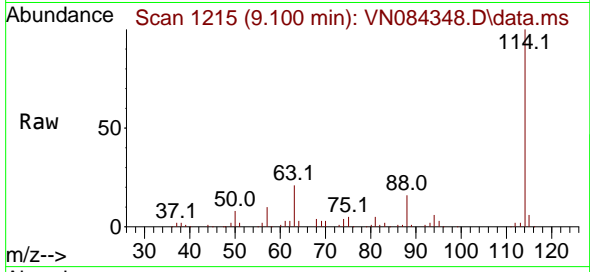
Tgt Ion: 65 Resp: 79279
 Ion Ratio Lower Upper
 65 100
 67 51.8 41.5 62.3



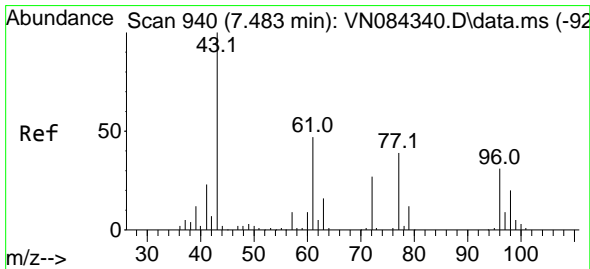
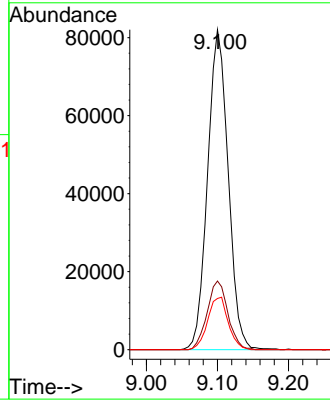
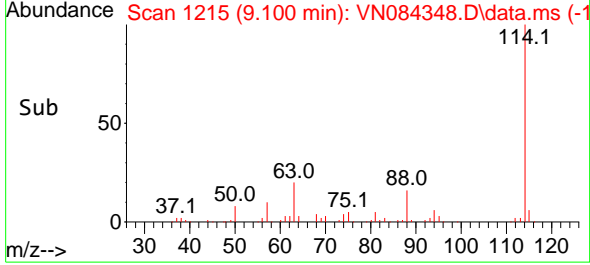


#28
 1,4-Difluorobenzene
 Concen: 30.000 ug/l
 RT: 9.100 min Scan# 11
 Delta R.T. -0.000 min
 Lab File: VN084348.D
 Acq: 08 Oct 2024 14:53

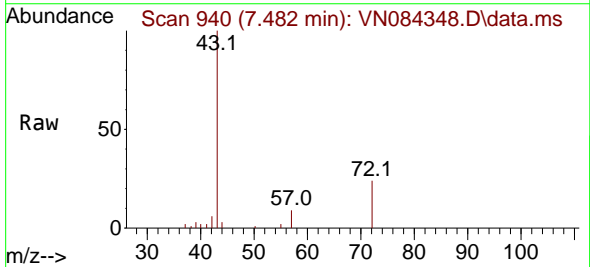
Instrument :
 MSVOA_N
 ClientSampleId :



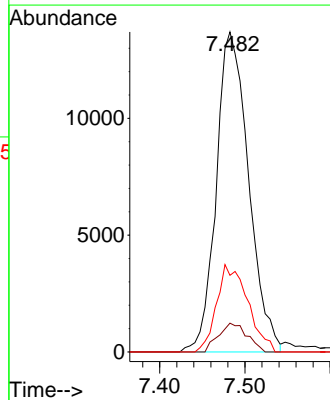
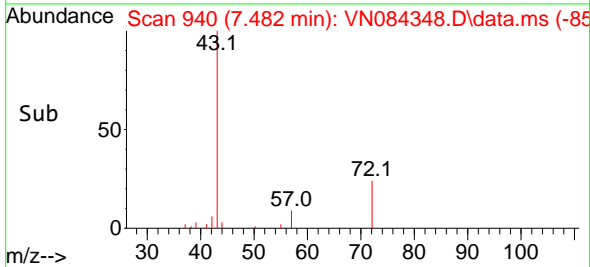
Tgt Ion:114 Resp: 165437
 Ion Ratio Lower Upper
 114 100
 63 21.6 17.4 26.0
 88 16.4 13.2 19.8

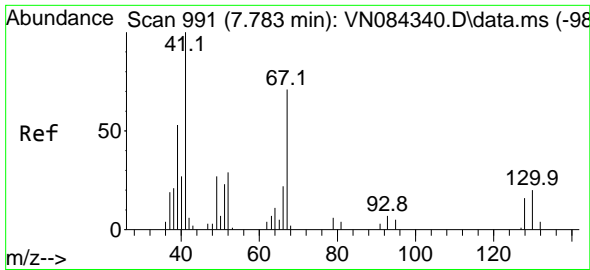


#30
 2-Butanone
 Concen: 24.994 ug/l
 RT: 7.482 min Scan# 940
 Delta R.T. -0.000 min
 Lab File: VN084348.D
 Acq: 08 Oct 2024 14:53



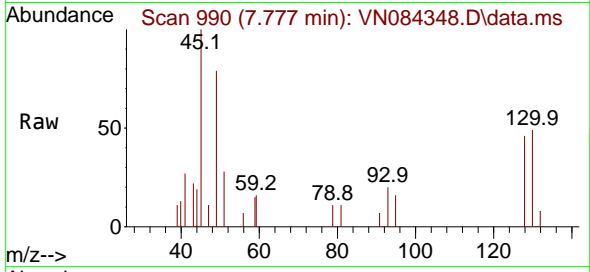
Tgt Ion: 43 Resp: 36140
 Ion Ratio Lower Upper
 43 100
 57 8.0 6.6 9.8
 72 26.2 21.3 31.9





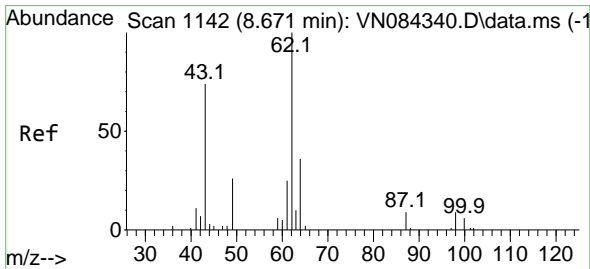
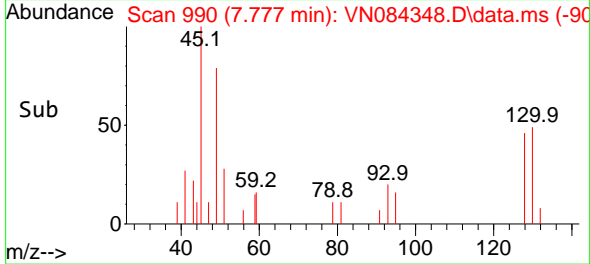
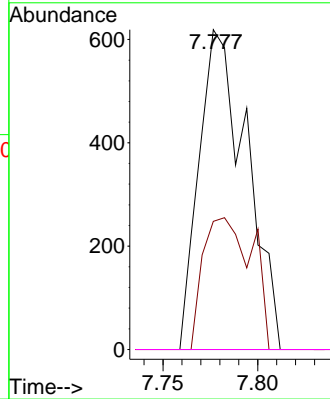
#35
 Methacrylonitrile
 Concen: 0.699 ug/l
 RT: 7.777 min Scan# 991
 Delta R.T. -0.006 min
 Lab File: VN084348.D
 Acq: 08 Oct 2024 14:53

Instrument :
 MSVOA_N
 ClientSampleId :



Tgt Ion: 41 Resp: 1079

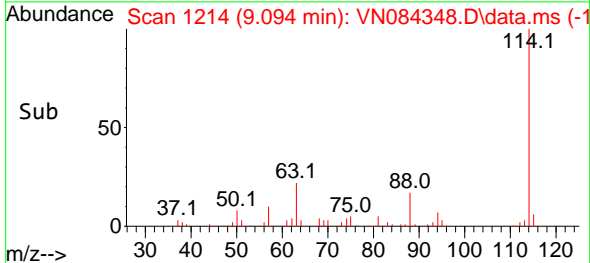
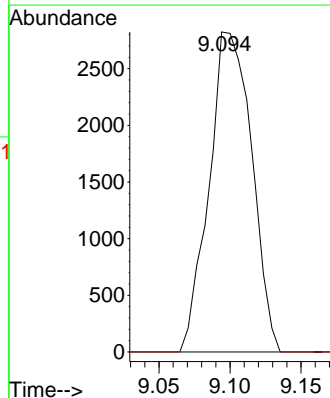
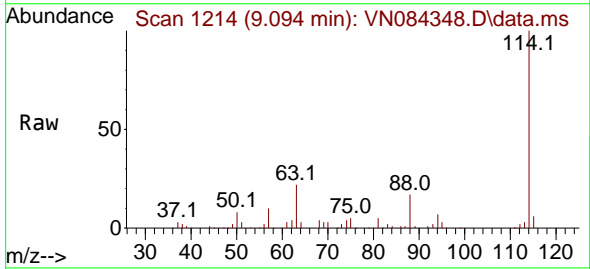
Ion	Ratio	Lower	Upper
41	100		
39	40.1	26.4	79.0
67	0.0	35.7	107.1#
52	0.0	14.5	43.5#

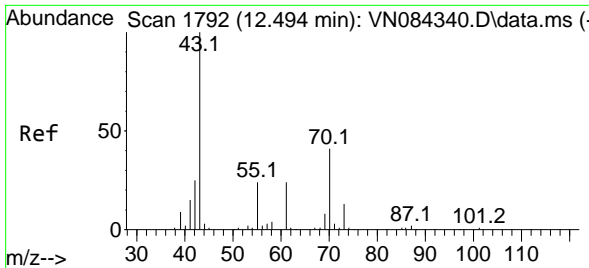


#36
 1,2-Dichloroethane
 Concen: 2.081 ug/l
 RT: 9.094 min Scan# 1214
 Delta R.T. 0.423 min
 Lab File: VN084348.D
 Acq: 08 Oct 2024 14:53

Tgt Ion: 62 Resp: 5898

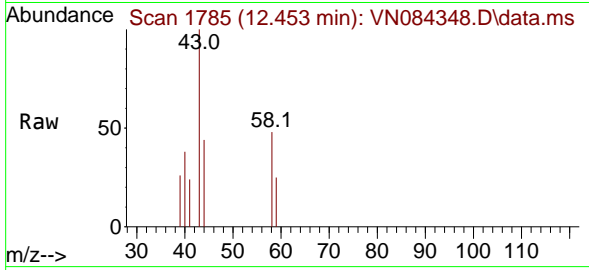
Ion	Ratio	Lower	Upper
62	100		
98	0.0	7.3	10.9#



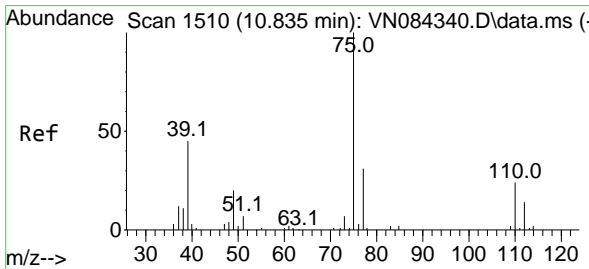
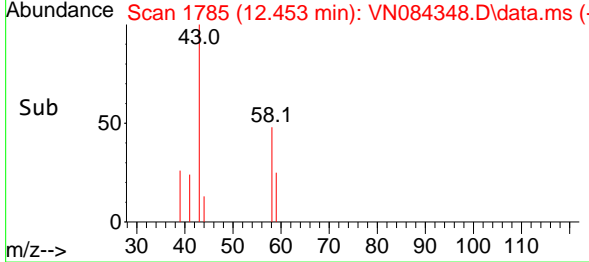
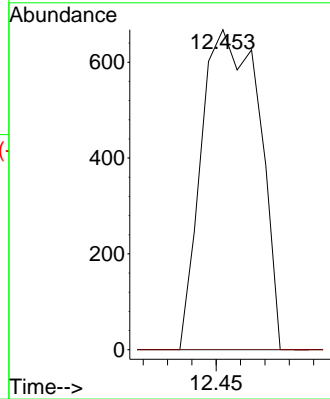


#47
 n-amyl Acetate
 Concen: 0.264 ug/l
 RT: 12.453 min Scan# 11
 Delta R.T. -0.041 min
 Lab File: VN084348.D
 Acq: 08 Oct 2024 14:53

Instrument : MSVOA_N
 ClientSampleId :

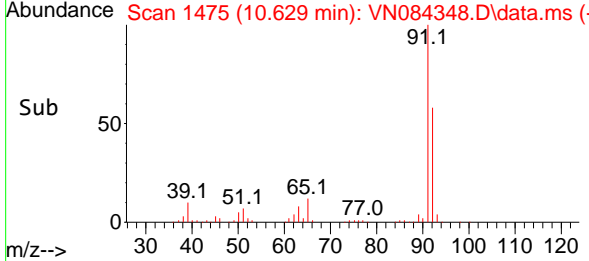
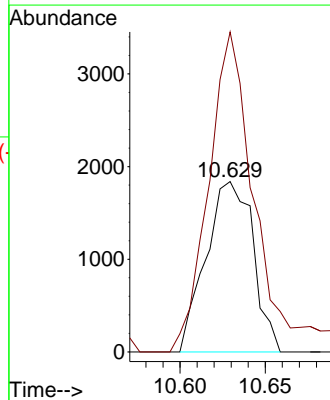
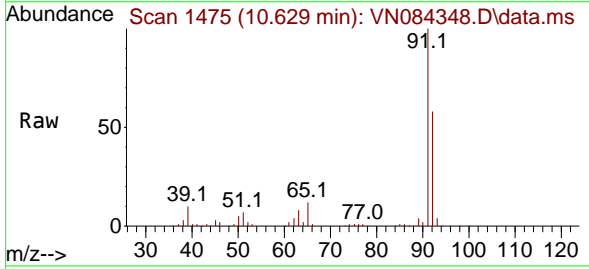


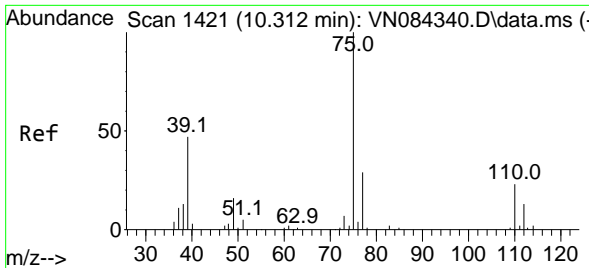
Tgt Ion: 43 Resp: 1098
 Ion Ratio Lower Upper
 43 100
 55 0.0 20.6 31.0#



#48
 t-1,3-Dichloropropene
 Concen: 1.113 ug/l
 RT: 10.629 min Scan# 1475
 Delta R.T. -0.206 min
 Lab File: VN084348.D
 Acq: 08 Oct 2024 14:53

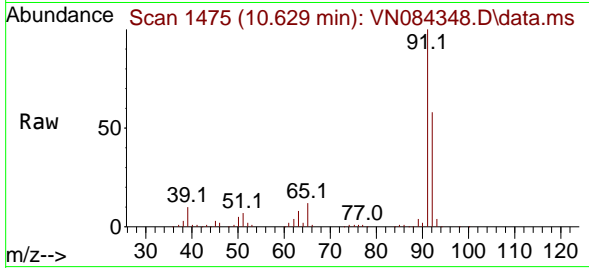
Tgt Ion: 75 Resp: 3539
 Ion Ratio Lower Upper
 75 100
 77 177.1 24.6 37.0#



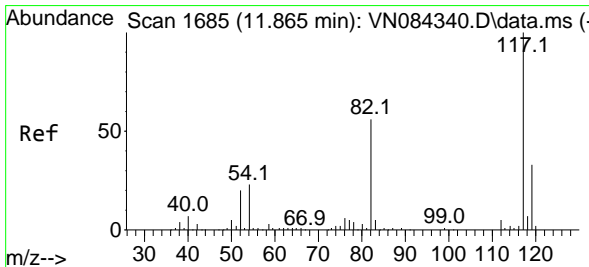
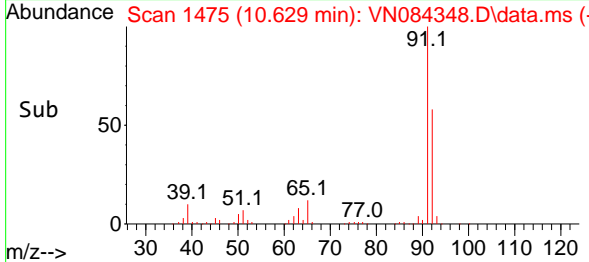
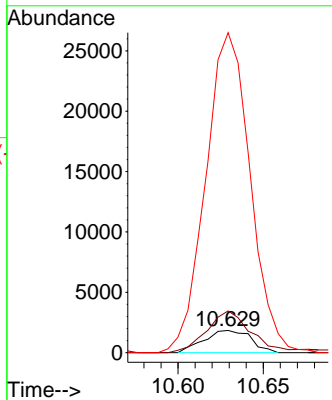


#49
 cis-1,3-Dichloropropene
 Concen: 1.062 ug/l
 RT: 10.629 min Scan# 1421
 Delta R.T. 0.318 min
 Lab File: VN084348.D
 Acq: 08 Oct 2024 14:53

Instrument : MSVOA_N
 ClientSampleId :

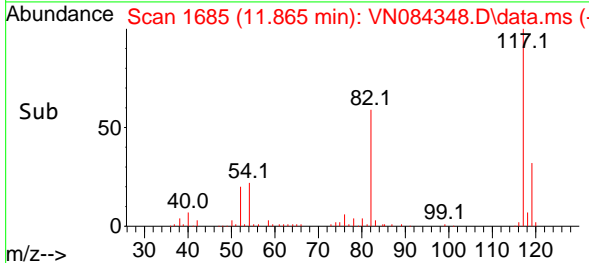
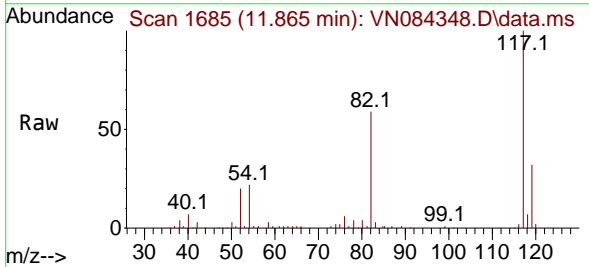
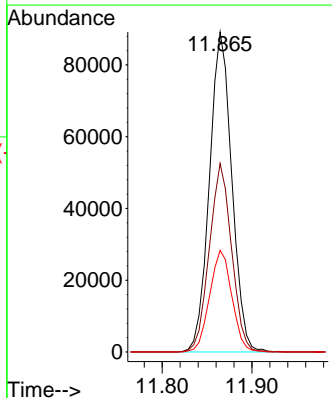


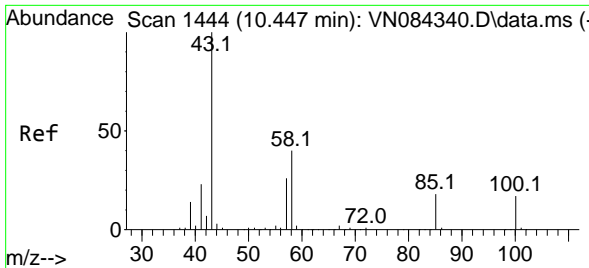
Tgt Ion: 75 Resp: 3539
 Ion Ratio Lower Upper
 75 100
 77 177.1 22.9 34.3#
 39 1372.1 37.4 56.2#



#57
 Chlorobenzene-d5
 Concen: 30.000 ug/l
 RT: 11.865 min Scan# 1685
 Delta R.T. -0.000 min
 Lab File: VN084348.D
 Acq: 08 Oct 2024 14:53

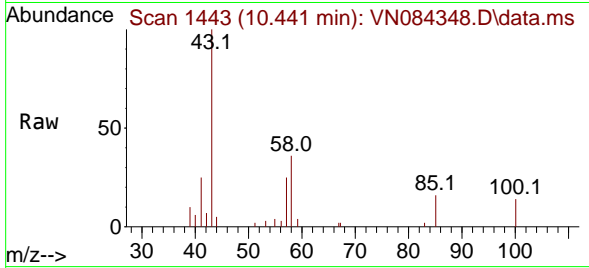
Tgt Ion:117 Resp: 154322
 Ion Ratio Lower Upper
 117 100
 82 58.7 46.2 69.4
 119 31.6 25.4 38.2





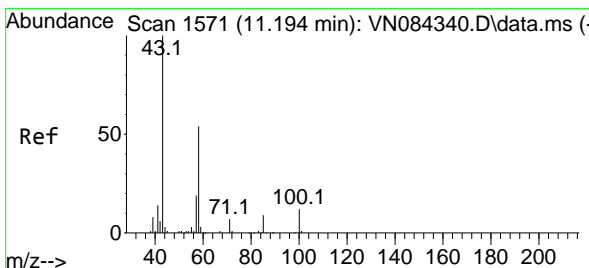
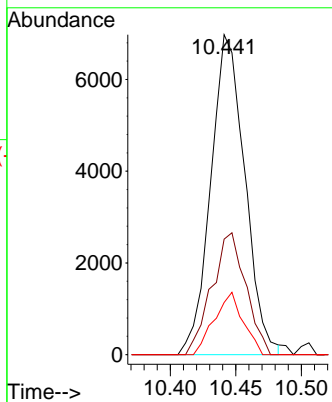
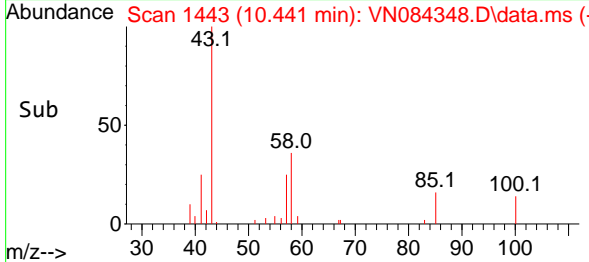
#58
 4-Methyl-2-Pentanone
 Concen: 4.387 ug/l
 RT: 10.441 min Scan# 1443
 Delta R.T. -0.006 min
 Lab File: VN084348.D
 Acq: 08 Oct 2024 14:53

Instrument : MSVOA_N
 ClientSampleId :

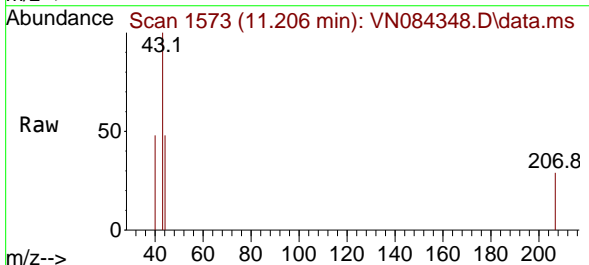


Tgt Ion: 43 Resp: 12613

Ion	Ratio	Lower	Upper
43	100		
58	38.0	31.9	47.9
85	16.5	14.6	22.0

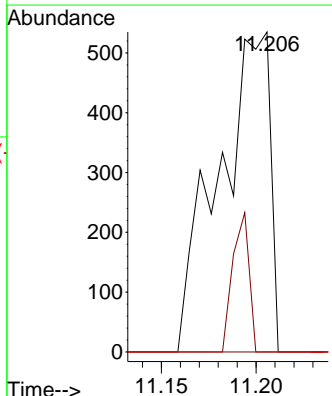
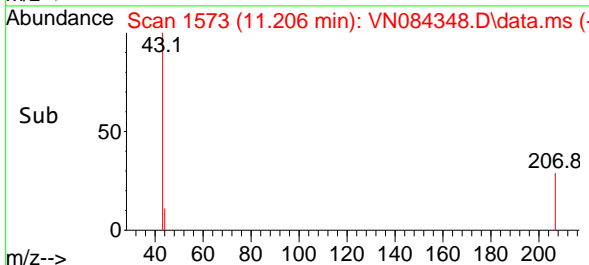


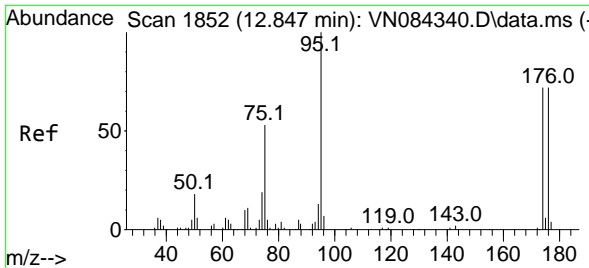
#59
 2-Hexanone
 Concen: 0.473 ug/l
 RT: 11.206 min Scan# 1573
 Delta R.T. 0.012 min
 Lab File: VN084348.D
 Acq: 08 Oct 2024 14:53



Tgt Ion: 43 Resp: 1010

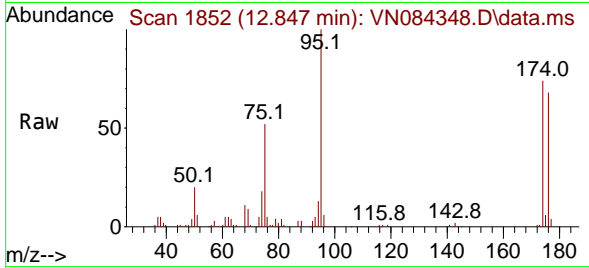
Ion	Ratio	Lower	Upper
43	100		
58	13.9	44.0	66.0#
57	0.0	15.4	23.2#



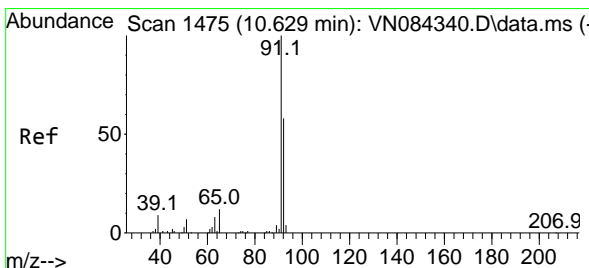
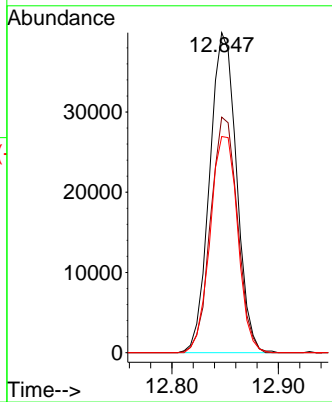
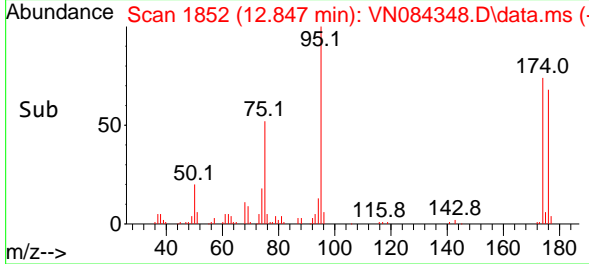


#60
 4-Bromofluorobenzene
 Concen: 27.422 ug/l
 RT: 12.847 min Scan# 1852
 Delta R.T. -0.000 min
 Lab File: VN084348.D
 Acq: 08 Oct 2024 14:53

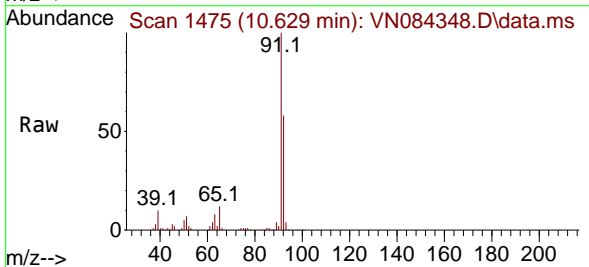
Instrument : MSVOA_N
 ClientSampleId :



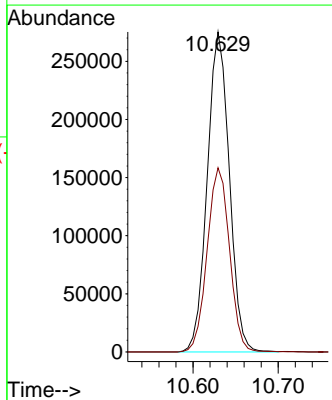
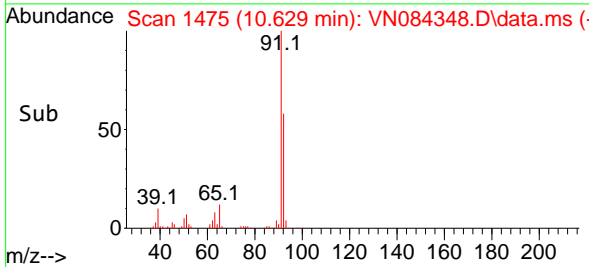
Tgt Ion: 95 Resp: 69842
 Ion Ratio Lower Upper
 95 100
 174 73.6 58.2 87.2
 176 69.2 56.4 84.6

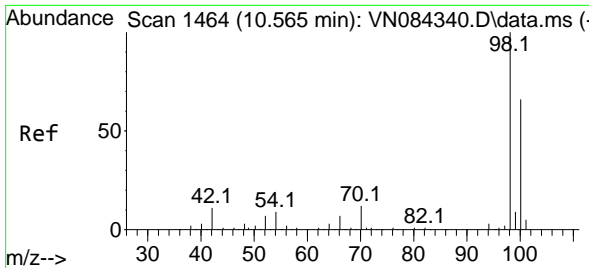


#62
 Toluene
 Concen: 54.868 ug/l
 RT: 10.629 min Scan# 1475
 Delta R.T. -0.000 min
 Lab File: VN084348.D
 Acq: 08 Oct 2024 14:53



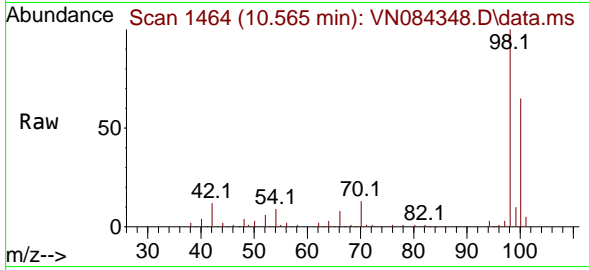
Tgt Ion: 91 Resp: 495692
 Ion Ratio Lower Upper
 91 100
 92 58.4 47.2 70.8



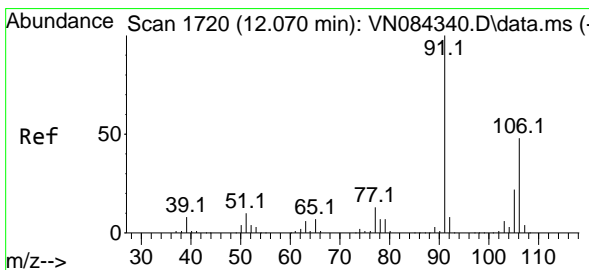
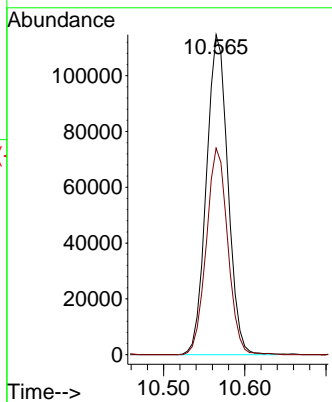
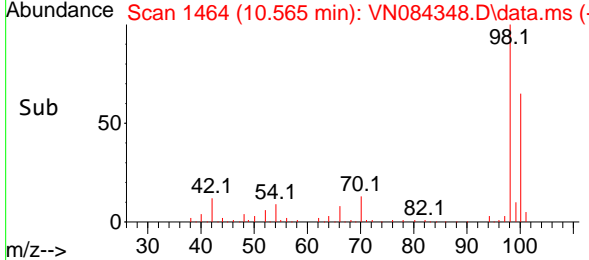


#63
 Toluene-d8
 Concen: 29.444 ug/l
 RT: 10.565 min Scan# 1464
 Delta R.T. -0.000 min
 Lab File: VN084348.D
 Acq: 08 Oct 2024 14:53

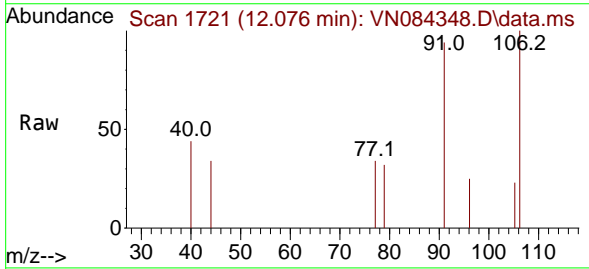
Instrument : MSVOA_N
 ClientSampleId :



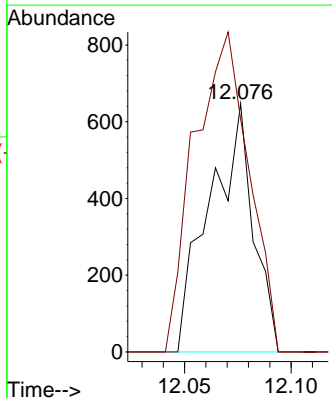
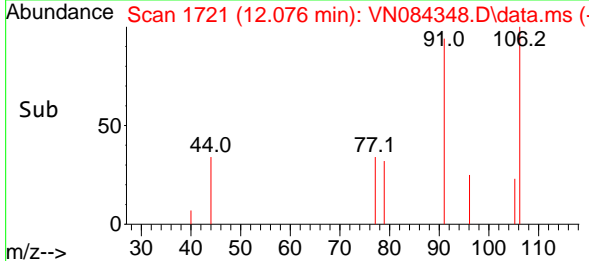
Tgt Ion: 98 Resp: 210498
 Ion Ratio Lower Upper
 98 100
 100 64.4 52.5 78.7

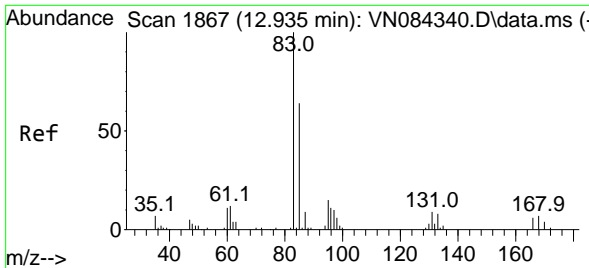


#67
 m/p-Xylenes
 Concen: 0.247 ug/l
 RT: 12.076 min Scan# 1721
 Delta R.T. 0.006 min
 Lab File: VN084348.D
 Acq: 08 Oct 2024 14:53



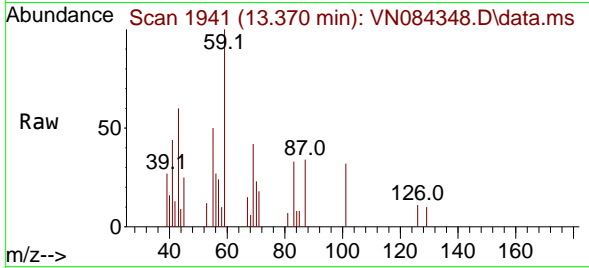
Tgt Ion: 106 Resp: 921
 Ion Ratio Lower Upper
 106 100
 91 160.9 166.7 250.1#



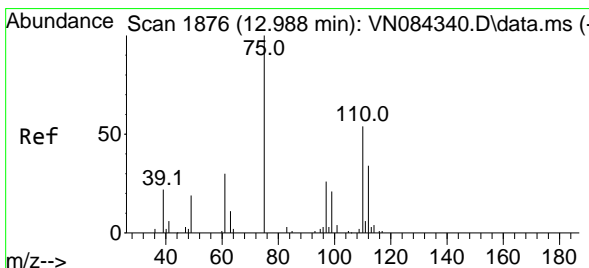
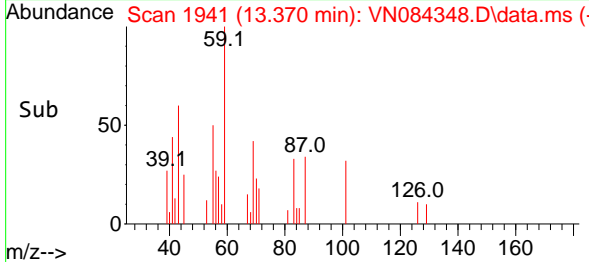
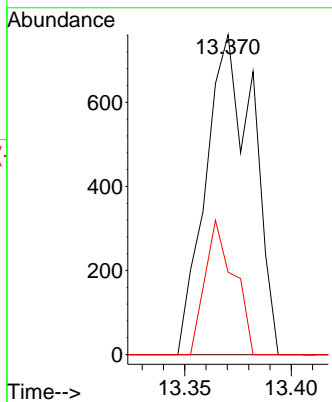


#71
 1,1,2-Tetrachloroethane
 Concen: 0.416 ug/l
 RT: 13.370 min Scan# 1178
 Delta R.T. 0.435 min
 Lab File: VN084348.D
 Acq: 08 Oct 2024 14:53

Instrument : MSVOA_N
 ClientSampleId :

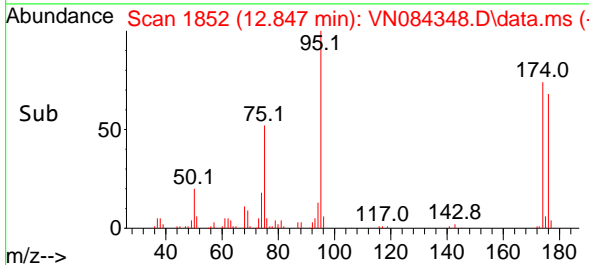
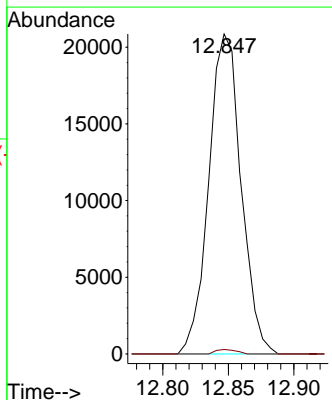
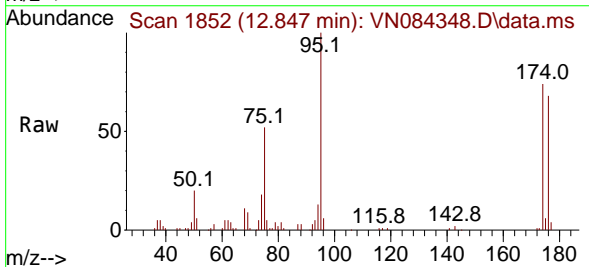


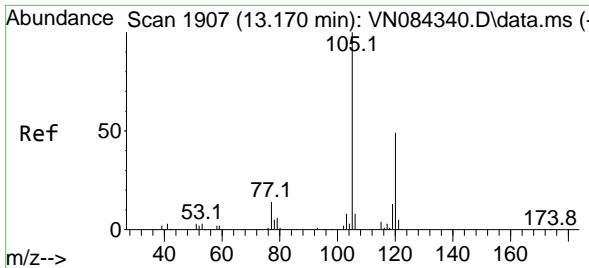
Tgt Ion: 83 Resp: 1178
 Ion Ratio Lower Upper
 83 100
 131 0.0 5.1 15.3#
 85 25.6 32.0 96.2#



#72
 1,2,3-Trichloropropane
 Concen: 14.732 ug/l
 RT: 12.847 min Scan# 1852
 Delta R.T. -0.141 min
 Lab File: VN084348.D
 Acq: 08 Oct 2024 14:53

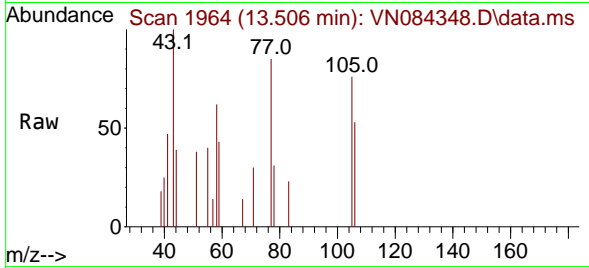
Tgt Ion: 75 Resp: 35762
 Ion Ratio Lower Upper
 75 100
 77 0.9 0.0 414.0



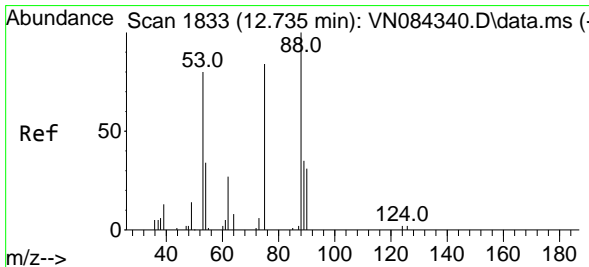
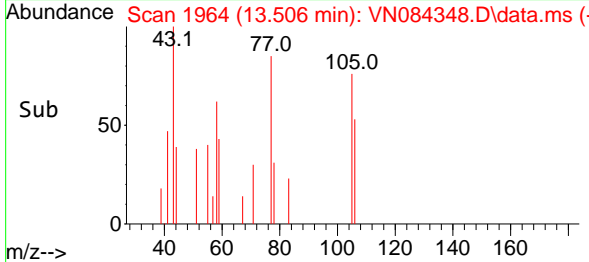
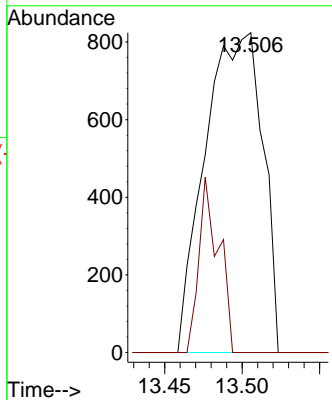


#76
 1,3,5-Trimethylbenzene
 Concen: 0.275 ug/l
 RT: 13.506 min Scan# 1907
 Delta R.T. 0.335 min
 Lab File: VN084348.D
 Acq: 08 Oct 2024 14:53

Instrument : MSVOA_N
 ClientSampleId :

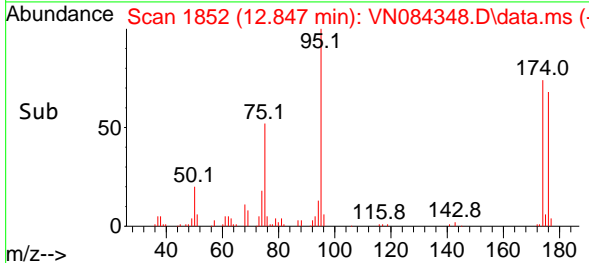
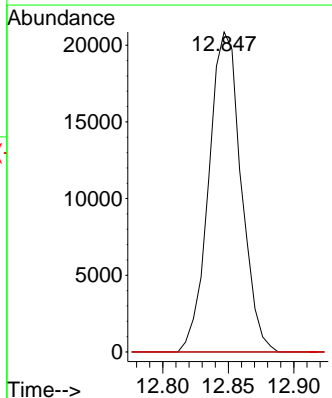
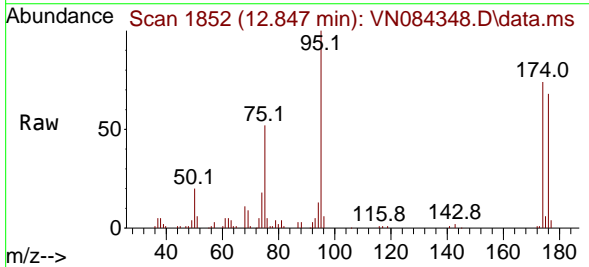


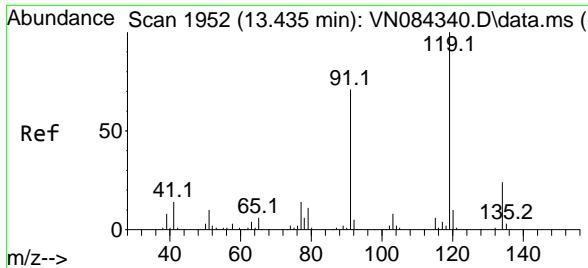
Tgt Ion: 105 Resp: 2122
 Ion Ratio Lower Upper
 105 100
 120 19.0 0.0 94.4



#77
 t-1,4-Dichloro-2-butene
 Concen: 34.476 ug/l
 RT: 12.847 min Scan# 1852
 Delta R.T. 0.112 min
 Lab File: VN084348.D
 Acq: 08 Oct 2024 14:53

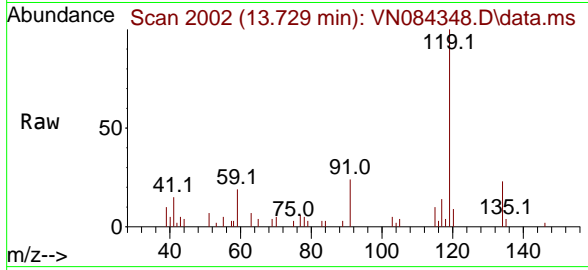
Tgt Ion: 75 Resp: 35762
 Ion Ratio Lower Upper
 75 100
 53 0.0 47.3 142.0#
 89 0.0 22.9 68.8#





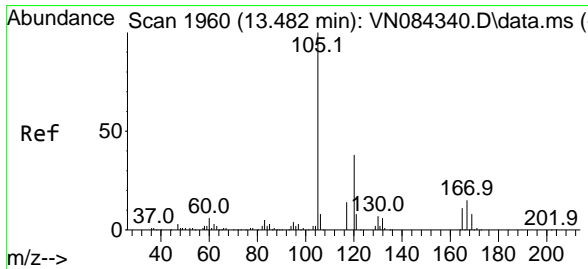
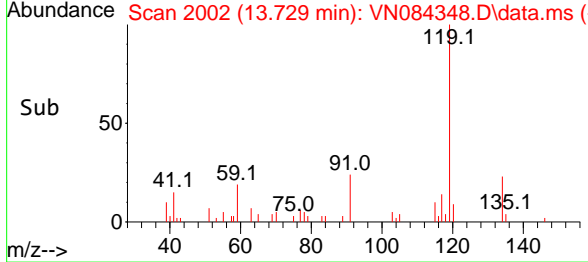
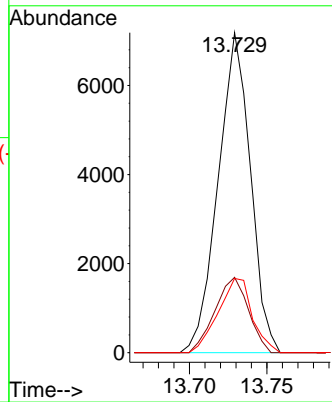
#79
 tert-butylbenzene
 Concen: 1.580 ug/l
 RT: 13.729 min Scan# 2002
 Delta R.T. 0.294 min
 Lab File: VN084348.D
 Acq: 08 Oct 2024 14:53

Instrument : MSVOA_N
 ClientSampleId :

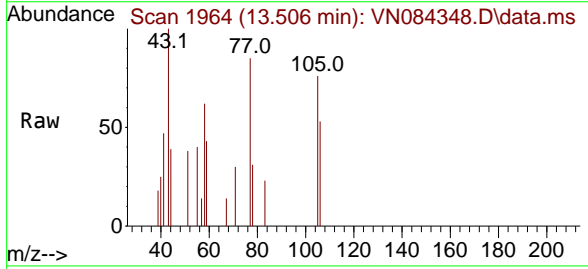


Tgt Ion:119 Resp: 10396

Ion	Ratio	Lower	Upper
119	100		
91	24.4	0.0	138.0
134	24.5	0.0	48.8

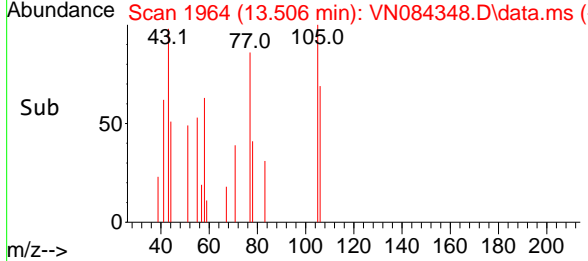
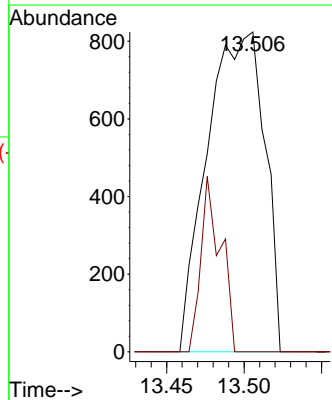


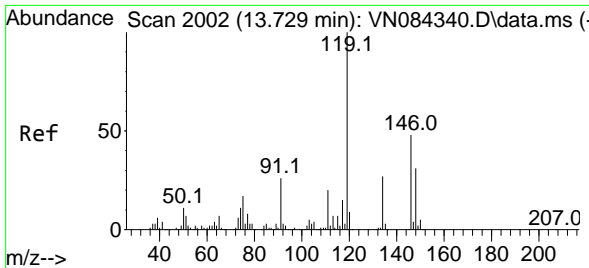
#80
 1,2,4-Trimethylbenzene
 Concen: 0.271 ug/l
 RT: 13.506 min Scan# 1964
 Delta R.T. 0.023 min
 Lab File: VN084348.D
 Acq: 08 Oct 2024 14:53



Tgt Ion:105 Resp: 2122

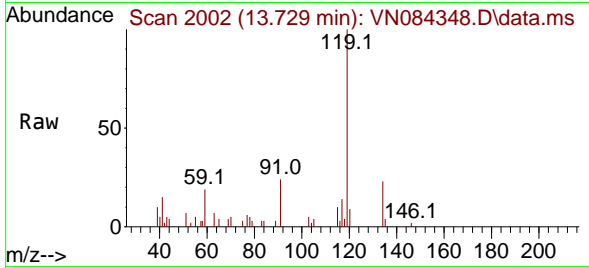
Ion	Ratio	Lower	Upper
105	100		
120	19.0	0.0	88.8





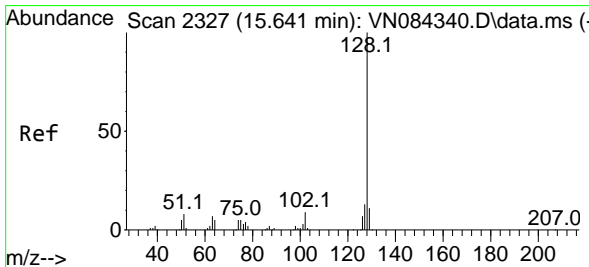
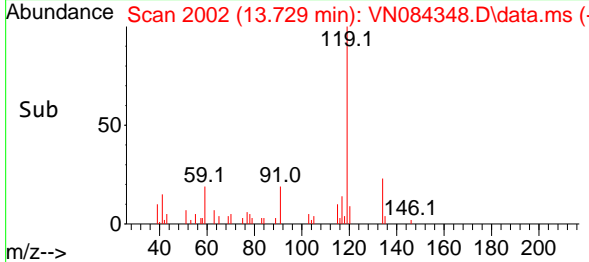
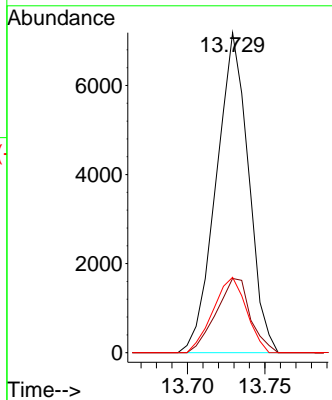
#82
 p-Isopropyltoluene
 Concen: 1.363 ug/l
 RT: 13.729 min Scan# 2002
 Delta R.T. -0.000 min
 Lab File: VN084348.D
 Acq: 08 Oct 2024 14:53

Instrument : MSVOA_N
 ClientSampleId :



Tgt Ion:119 Resp: 10396

Ion	Ratio	Lower	Upper
119	100		
134	24.5	0.0	50.2
91	24.4	0.0	50.6



#91
 Naphthalene
 Concen: 0.576 ug/l
 RT: 15.635 min Scan# 2326
 Delta R.T. -0.006 min
 Lab File: VN084348.D
 Acq: 08 Oct 2024 14:53

Tgt Ion:128 Resp: 4046

Ion	Ratio	Lower	Upper
128	100		
127	14.9	10.3	15.5
129	7.0	8.8	13.2

