

Data Path : Z:\VOASRV\HPCHEM1\MSVOA N\DATA\VN100920\
 Data File : VN064045.D
 Acq On : 9 Oct 2020 18:02
 Operator : JC/MD
 Sample : L4350-02 5X
 Misc : 5.00mL/MSVOA N/WATER
 ALS Vial : 15 Sample Multiplier: 1

Instrument :
 MSVOA_N
 ClientSampleId :
 14B-2

Quant Time: Oct 10 01:30:40 2020
 Quant Method : Z:\VOASRV\HPCHEM1\MSVOA N\METHODS\624N100620W.M
 Quant Title : METHOD 624 VOLATILE ORGANIC ANALYSIS
 QLast Update : Tue Oct 06 16:42:38 2020
 Response via : Initial Calibration

Internal Standards	R.T.	QIon	Response	Conc	Units	Dev(Min)
1) Bromochloromethane	7.15	128	44418	30.00	ug/l	0.00
28) 1,4-Difluorobenzene	8.55	114	215138	30.00	ug/l	0.00
57) Chlorobenzene-d5	11.38	117	201202	30.00	ug/l	0.00

System Monitoring Compounds

27) 1,2-Dichloroethane-d4	7.99	65	119110	29.86	ug/l	0.00
Spiked Amount	30.000	Range	50 - 169	Recovery	=	99.53%
60) 4-Bromofluorobenzene	12.38	95	79819	23.20	ug/l	0.00
Spiked Amount	30.000	Range	56 - 143	Recovery	=	77.33%
63) Toluene-d8	10.06	98	268670	29.47	ug/l	0.00
Spiked Amount	30.000	Range	66 - 137	Recovery	=	98.23%

Target Compounds

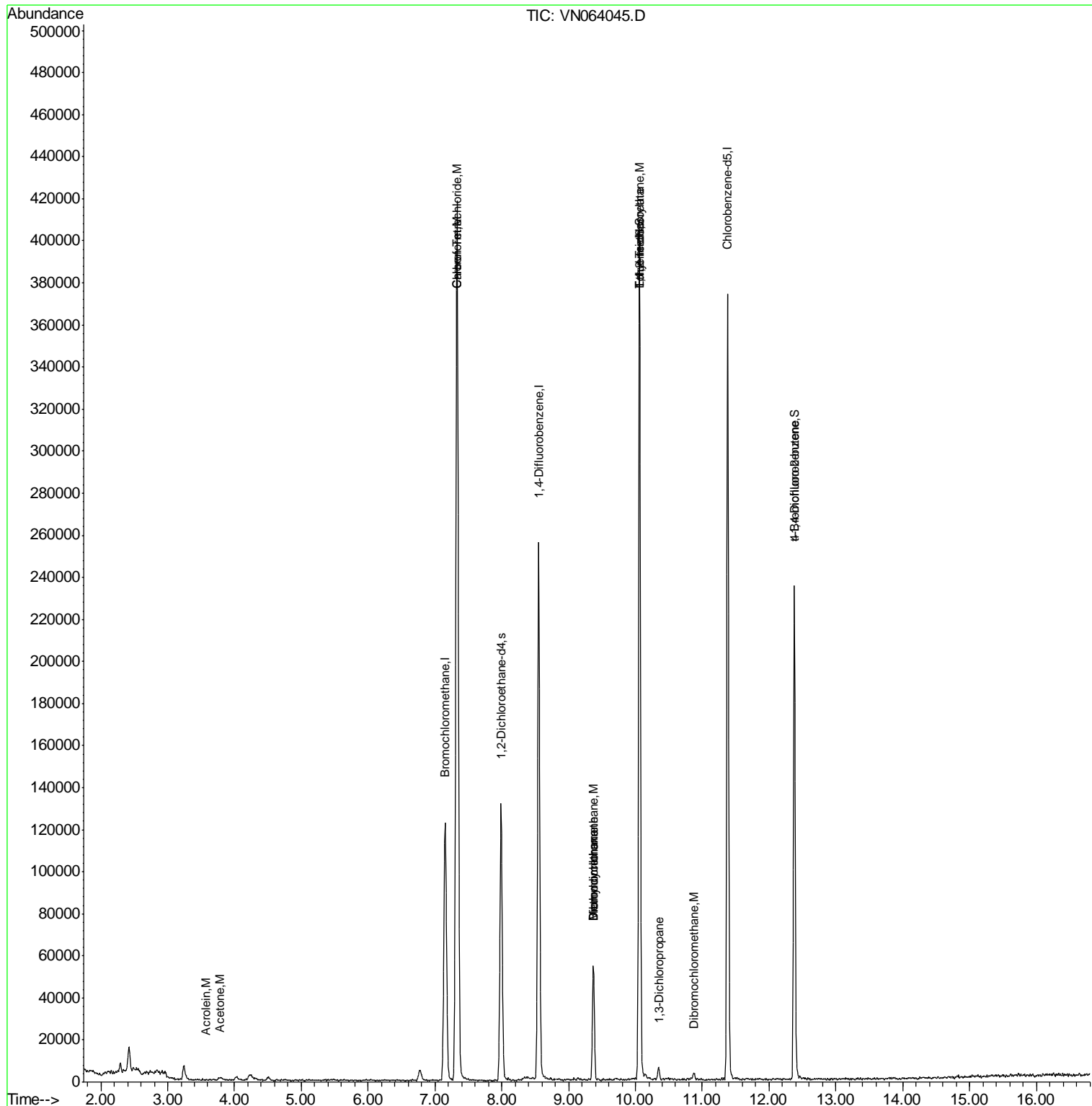
					Ovalue	
13) Acrolein	3.58	56	61	0.214	ug/l #	13
15) Acetone	3.78	58	386	1.106	ug/l #	1
25) Chloroform	7.33	83	433662	76.608	ug/l	99
33) Carbon Tetrachloride	7.33	117	2186	0.519	ug/l #	90
38) Methylcyclohexane	9.37	83	38095	11.976	ug/l #	16
40) Dibromomethane	9.38	93	1030	0.507	ug/l #	2
41) Bromodichloromethane	9.37	83	38095	9.017	ug/l	98
50) 1,1,2-Trichloroethane	10.07	97	10942	4.031	ug/l #	1
51) Ethyl methacrylate	10.06	69	1219	0.310	ug/l #	47
52) 1,3-Dichloropropane	10.35	76	949	0.204	ug/l #	43
53) Dibromochloromethane	10.88	129	1894	0.606	ug/l	99
77) t-1,4-Dichloro-2-butene	12.38	75	43873	32.034	ug/l #	12

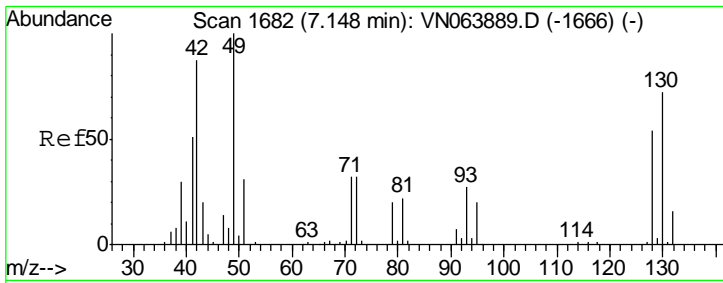
(#) = qualifier out of range (m) = manual integration (+) = signals summed

Data Path : Z:\VOASRV\HPCHEM1\MSVOA N\DATA\VN100920\
 Data File : VN064045.D
 Acq On : 9 Oct 2020 18:02
 Operator : JC/MD
 Sample : L4350-02 5X
 Misc : 5.00mL/MSVOA N/WATER
 ALS Vial : 15 Sample Multiplier: 1

Instrument :
 MSVOA_N
 Client Sampled :
 14B-2

Quant Time: Oct 10 01:30:40 2020
 Quant Method : Z:\VOASRV\HPCHEM1\MSVOA N\METHODS\624N100620W.M
 Quant Title : METHOD 624 VOLATILE ORGANIC ANALYSIS
 QLast Update : Tue Oct 06 16:42:38 2020
 Response via : Initial Calibration

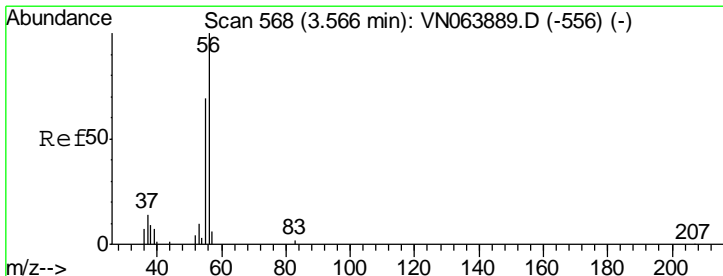
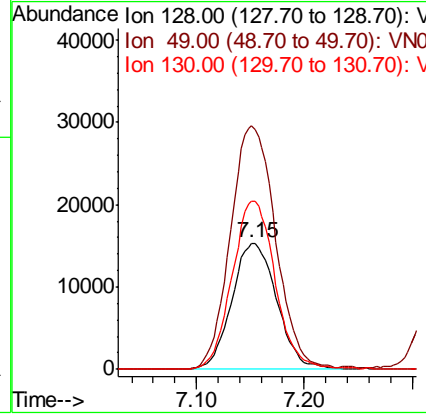
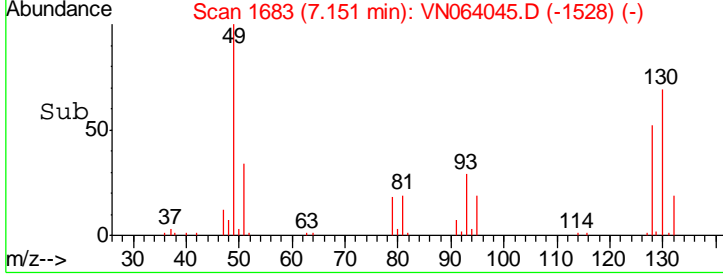
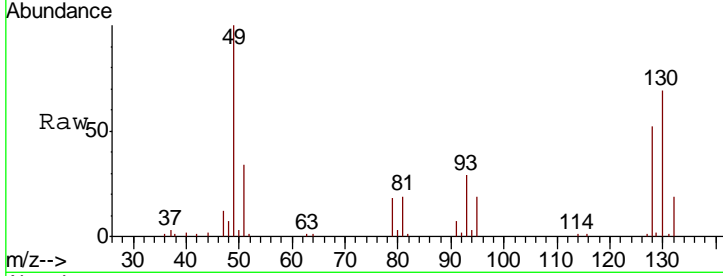




#1
 Bromochloromethane
 Concen: 30.000 ug/l
 RT: 7.15 min Scan# 1683
 Delta R.T. -0.00 min
 Lab File: VN064045.D
 Acq: 9 Oct 2020 18:02

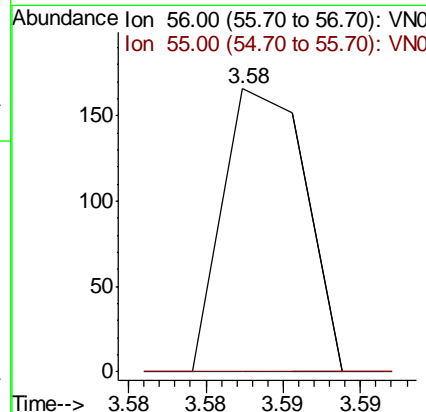
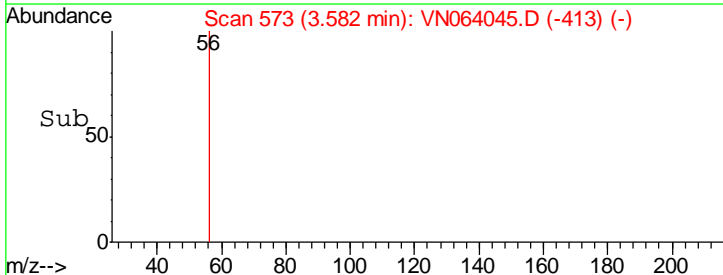
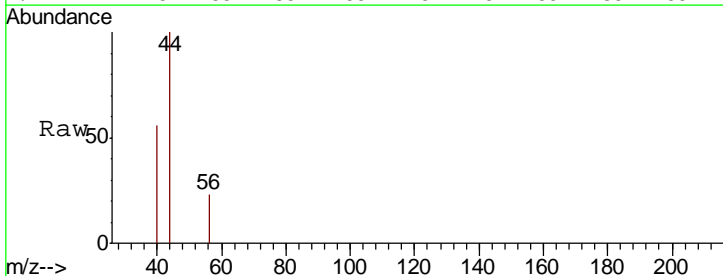
Instrument :
 MSVOA_N
 ClientSampled :
 14B-2

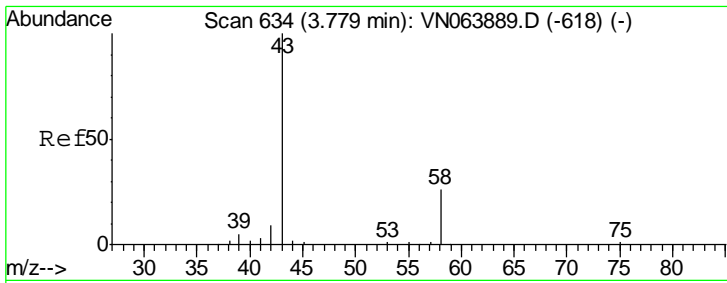
Tgt Ion	Resp	Lower	Upper
128	44418		
49	194.1	0.0	437.5
130	127.3	0.0	327.3



#13
 Acrolein
 Concen: 0.214 ug/l
 RT: 3.58 min Scan# 573
 Delta R.T. 0.01 min
 Lab File: VN064045.D
 Acq: 9 Oct 2020 18:02

Tgt Ion	Resp	Lower	Upper
56	61		
55	100	58.7	88.1#

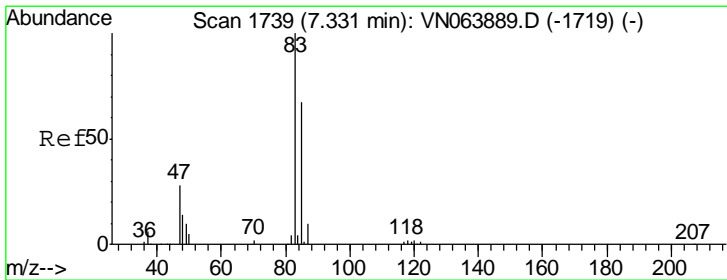
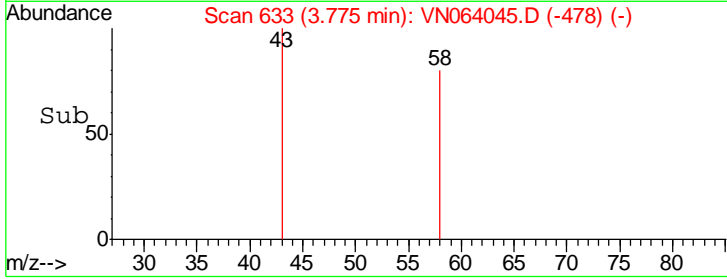
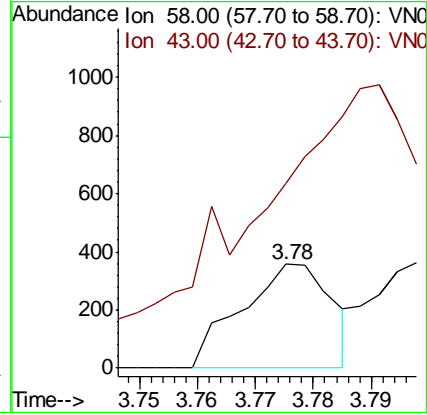
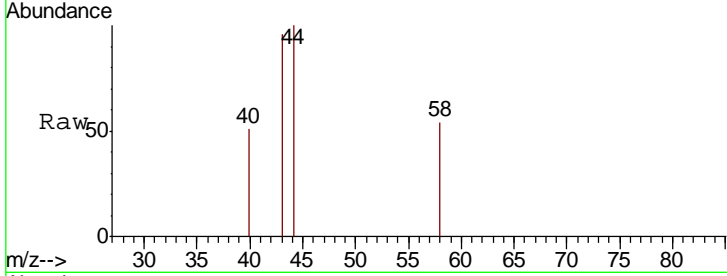




#15
 Acetone
 Concen: 1.106 ug/l
 RT: 3.78 min Scan# 633
 Delta R.T. -0.00 min
 Lab File: VN064045.D
 Acq: 9 Oct 2020 18:02

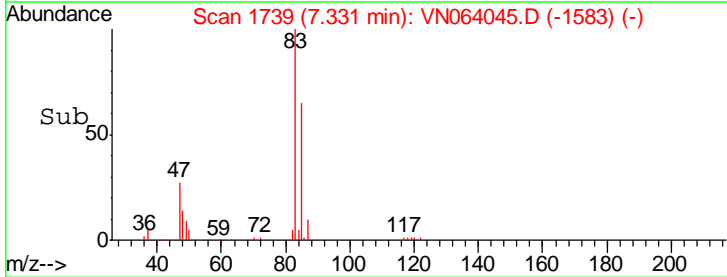
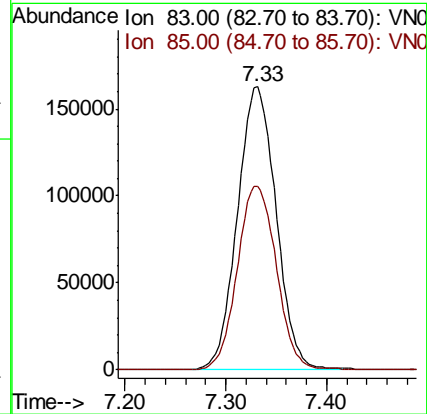
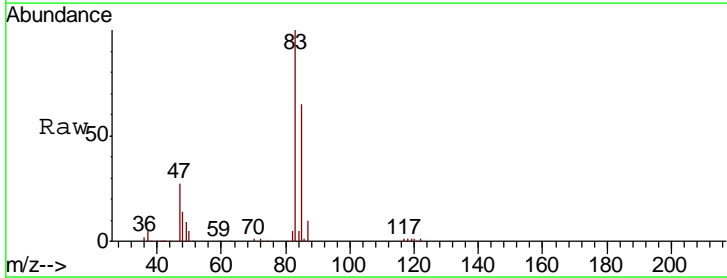
Instrument :
 MSVOA_N
 ClientSampled :
 14B-2

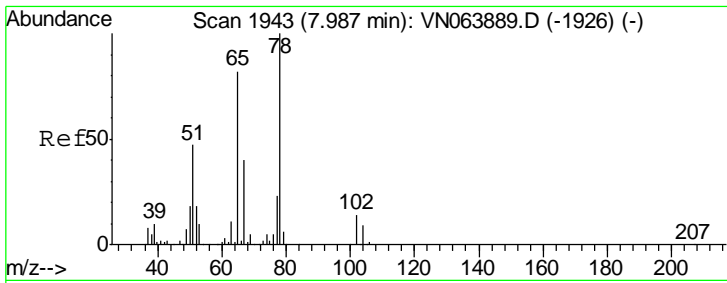
Tgt Ion: 58 Resp: 386
 Ion Ratio Lower Upper
 58 100
 43 99.7 233.2 349.8#



#25
 Chloroform
 Concen: 76.608 ug/l
 RT: 7.33 min Scan# 1739
 Delta R.T. 0.00 min
 Lab File: VN064045.D
 Acq: 9 Oct 2020 18:02

Tgt Ion: 83 Resp: 433662
 Ion Ratio Lower Upper
 83 100
 85 64.8 51.0 76.4

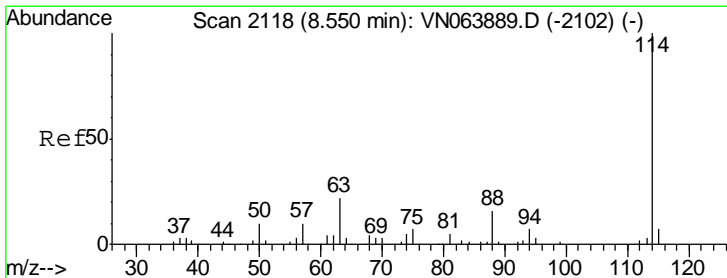
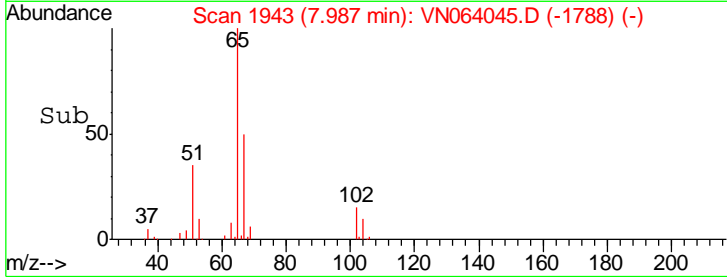
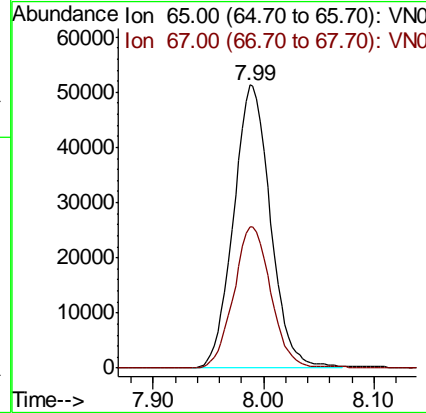
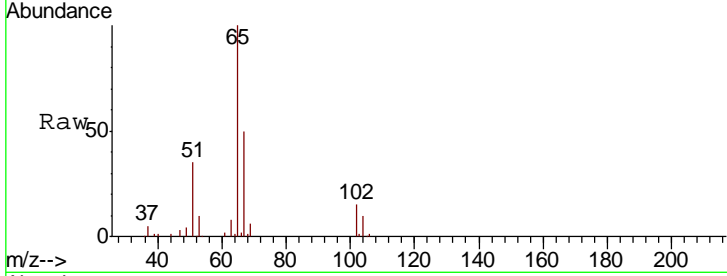




#27
 1,2-Dichloroethane-d4
 Concen: 29.858 ug/l
 RT: 7.99 min Scan# 1943
 Delta R.T. -0.00 min
 Lab File: VN064045.D
 Acq: 9 Oct 2020 18:02

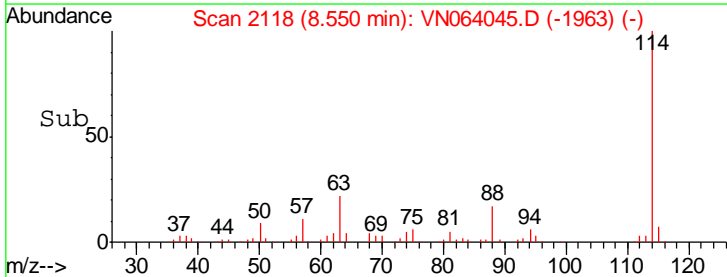
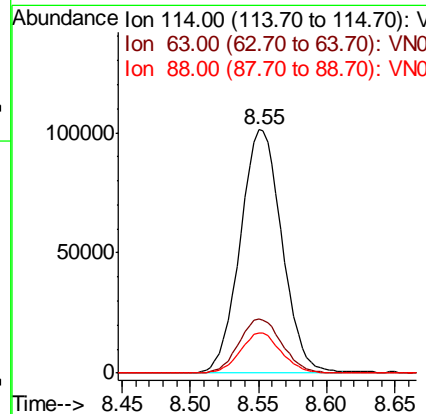
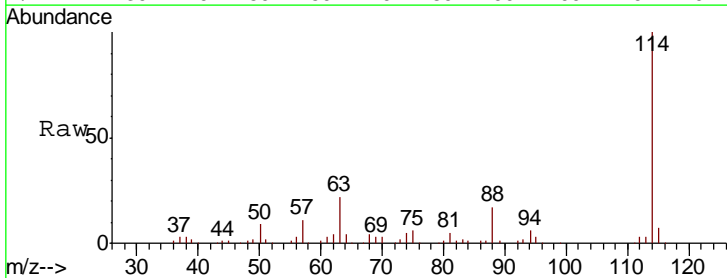
Instrument :
 MSVOA_N
 ClientSampled :
 14B-2

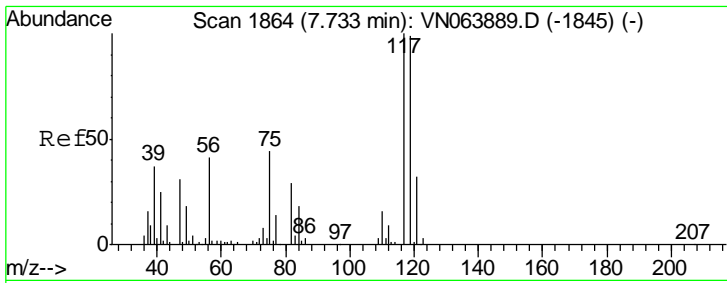
Tgt Ion	Resp	Lower	Upper
65	119110		
67	49.9	43.8	65.6



#28
 1,4-Difluorobenzene
 Concen: 30.000 ug/l
 RT: 8.55 min Scan# 2118
 Delta R.T. -0.00 min
 Lab File: VN064045.D
 Acq: 9 Oct 2020 18:02

Tgt Ion	Resp	Lower	Upper
114	215138		
63	22.8	17.0	25.6
88	16.3	12.6	18.8

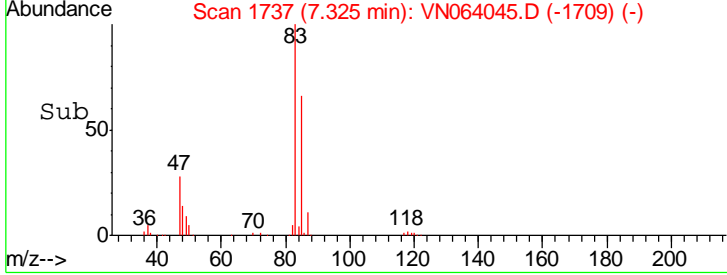
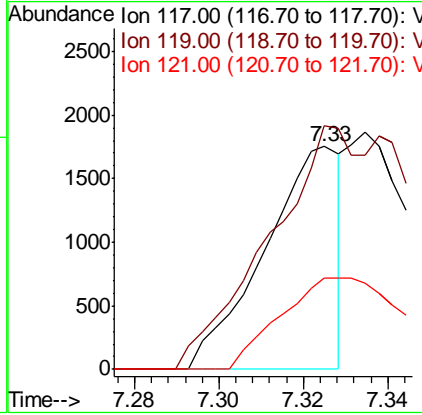
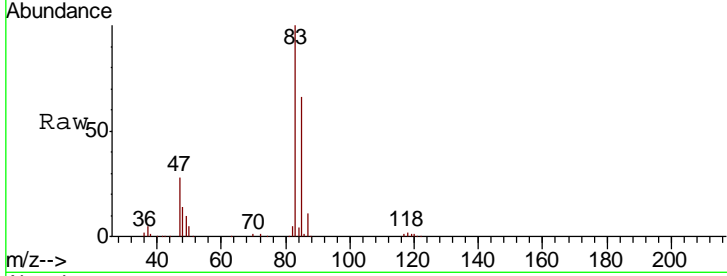




#33
 Carbon Tetrachloride
 Concen: 0.519 ug/l
 RT: 7.33 min Scan# 1737
 Delta R.T. -0.41 min
 Lab File: VN064045.D
 Acq: 9 Oct 2020 18:02

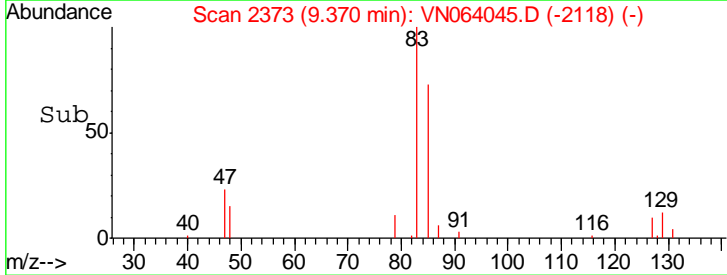
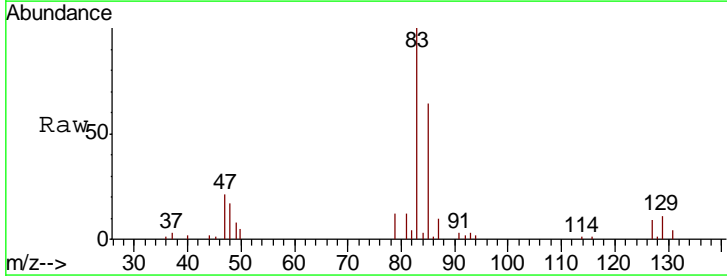
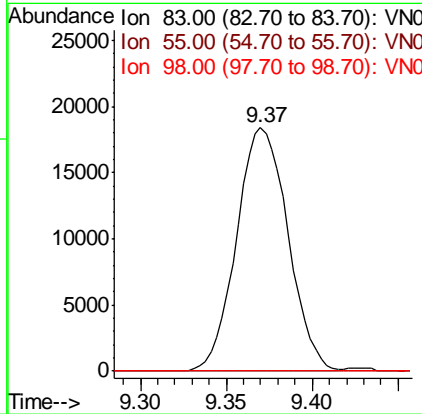
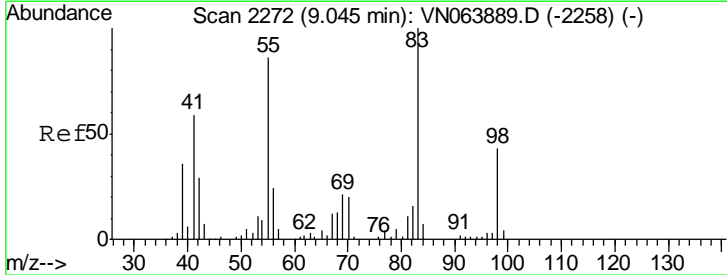
Instrument :
 MSVOA_N
 ClientSampled :
 14B-2

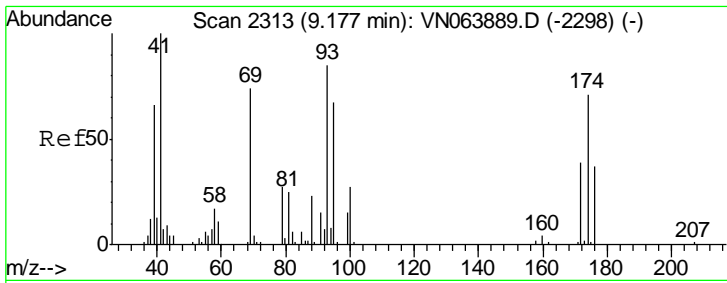
Tgt Ion	Resp	Lower	Upper
117	100		
119	98.7	73.0	109.4
121	41.0	24.9	37.3#



#38
 Methylcyclohexane
 Concen: 11.976 ug/l
 RT: 9.37 min Scan# 2373
 Delta R.T. 0.32 min
 Lab File: VN064045.D
 Acq: 9 Oct 2020 18:02

Tgt Ion	Resp	Lower	Upper
83	100		
55	0.0	41.9	125.7#
98	0.0	22.2	66.6#

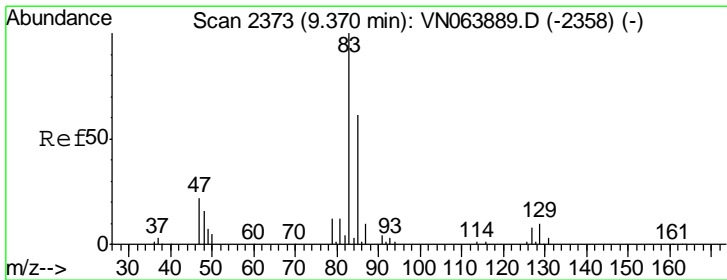
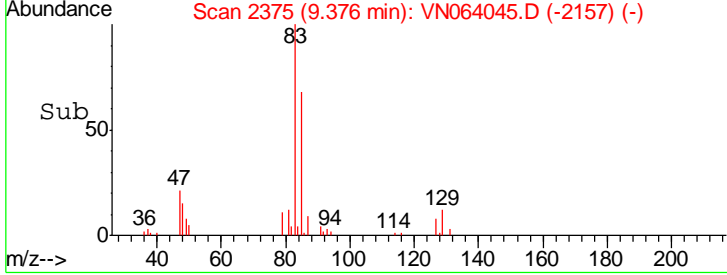
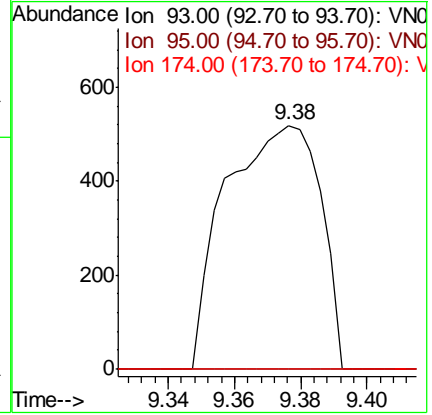
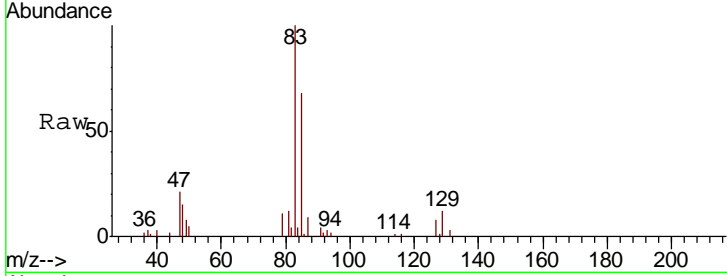




#40
 Dibromomethane
 Concen: 0.507 ug/l
 RT: 9.38 min Scan# 2375
 Delta R.T. 0.20 min
 Lab File: VN064045.D
 Acq: 9 Oct 2020 18:02

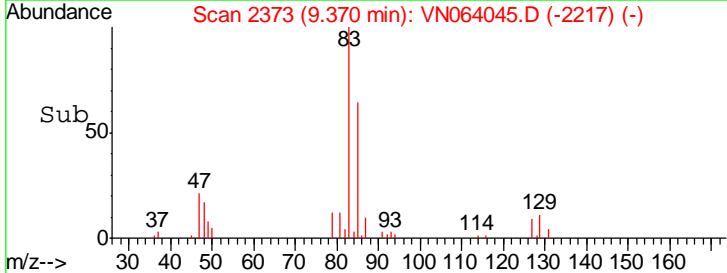
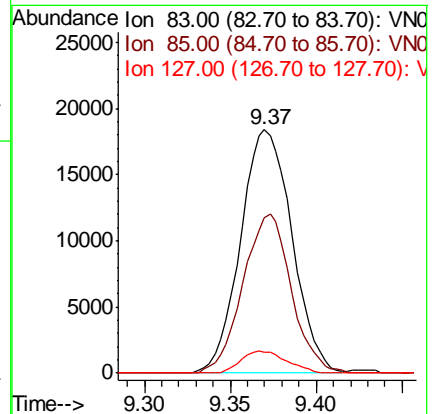
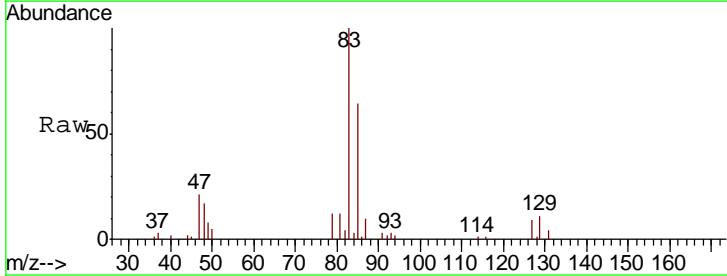
Instrument :
 MSVOA_N
 ClientSampled :
 14B-2

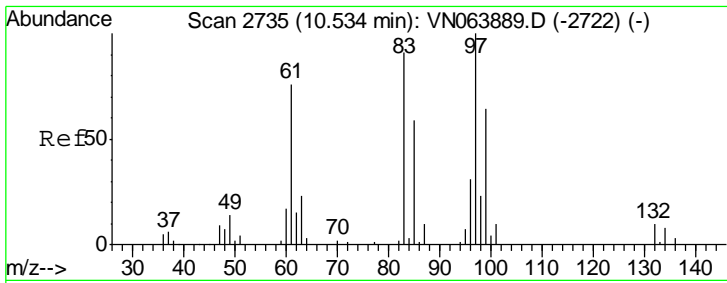
Tgt Ion	Resp	Lower	Upper
93	1030		
95	0.0	0.0	168.2
174	0.0	0.0	208.4



#41
 Bromodichloromethane
 Concen: 9.017 ug/l
 RT: 9.37 min Scan# 2373
 Delta R.T. 0.00 min
 Lab File: VN064045.D
 Acq: 9 Oct 2020 18:02

Tgt Ion	Resp	Lower	Upper
83	38095		
85	63.7	52.6	79.0
127	8.8	7.4	11.0

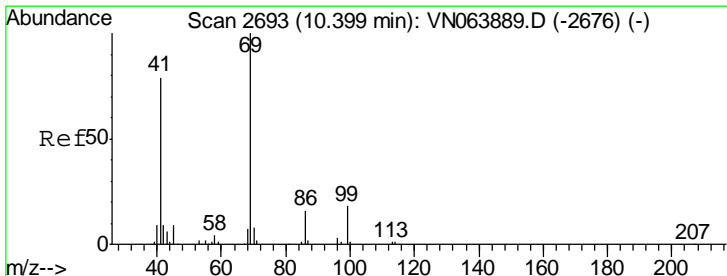
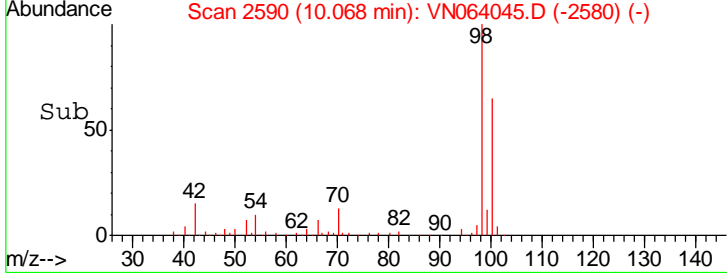
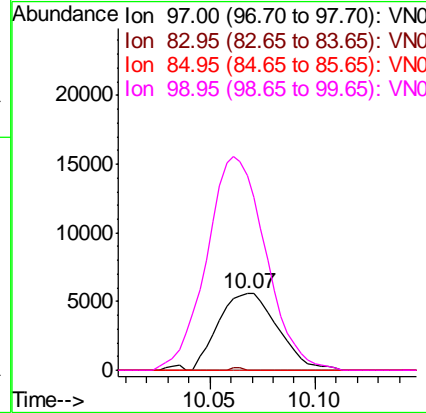
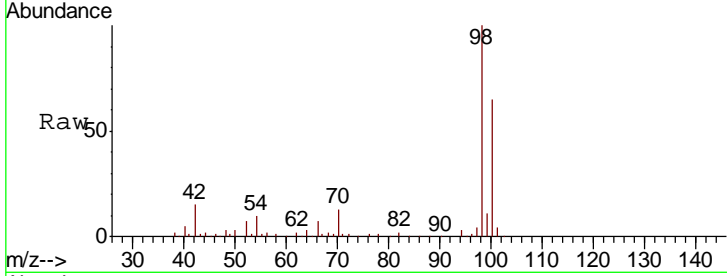




#50
 1,1,2-Trichloroethane
 Concen: 4.031 ug/l
 RT: 10.07 min Scan# 2590
 Delta R.T. -0.47 min
 Lab File: VN064045.D
 Acq: 9 Oct 2020 18:02

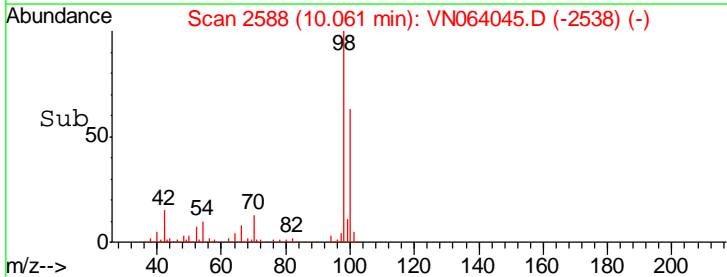
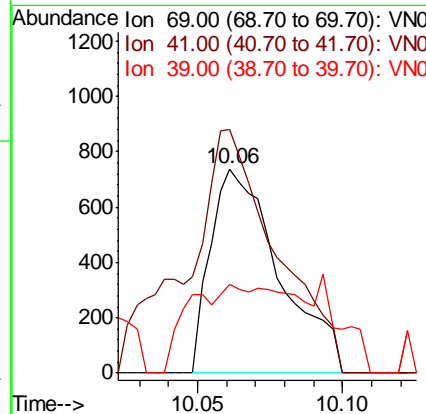
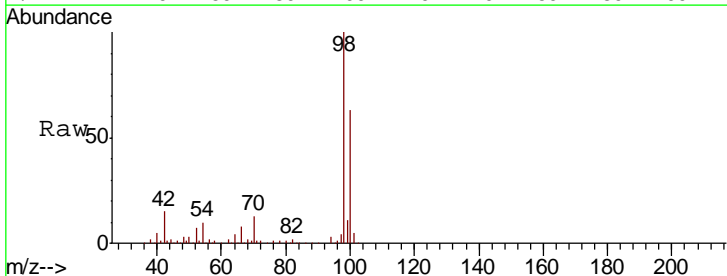
Instrument : MSVOA_N
 ClientSampled : 14B-2

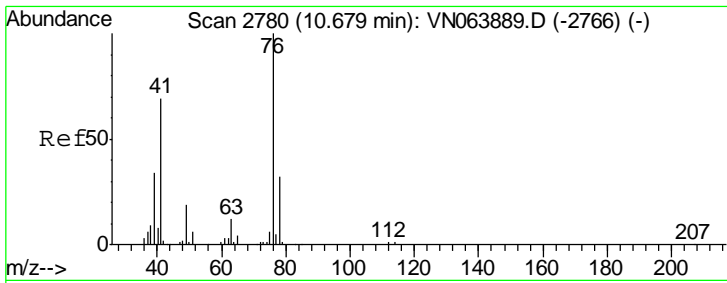
Tgt Ion	Resp	Lower	Upper
97	10942		
97	100		
83	0.0	69.9	104.9#
85	0.0	44.0	66.0#
99	255.3	50.6	76.0#



#51
 Ethyl methacrylate
 Concen: 0.310 ug/l
 RT: 10.06 min Scan# 2588
 Delta R.T. -0.34 min
 Lab File: VN064045.D
 Acq: 9 Oct 2020 18:02

Tgt Ion	Resp	Lower	Upper
69	1219		
69	100		
41	119.1	32.1	96.5#
39	22.2	16.1	48.3

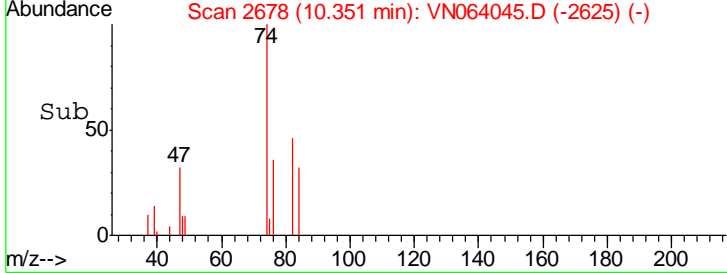
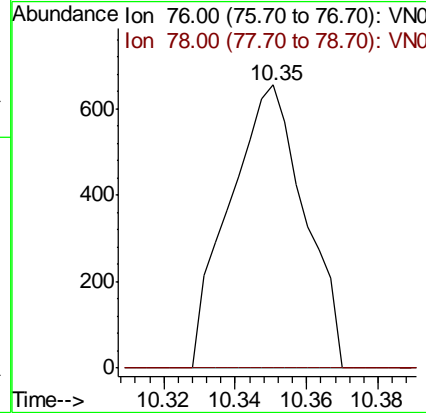
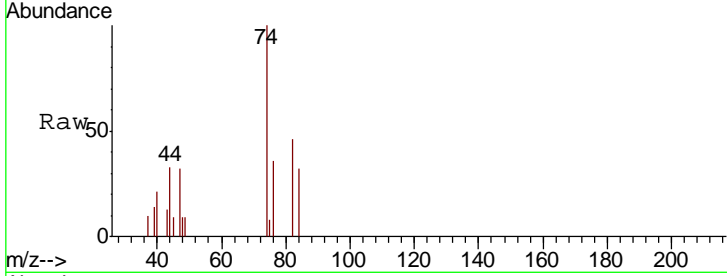




#52
 1,3-Dichloropropane
 Concen: 0.204 ug/l
 RT: 10.35 min Scan# 2678
 Delta R.T. -0.33 min
 Lab File: VN064045.D
 Acq: 9 Oct 2020 18:02

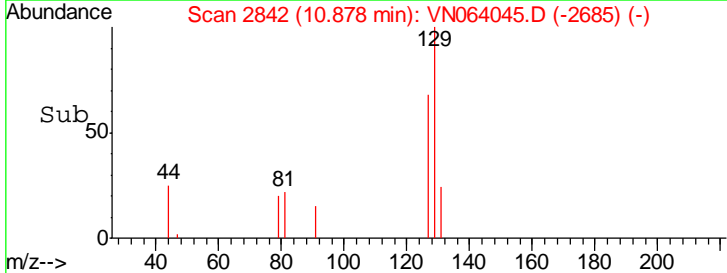
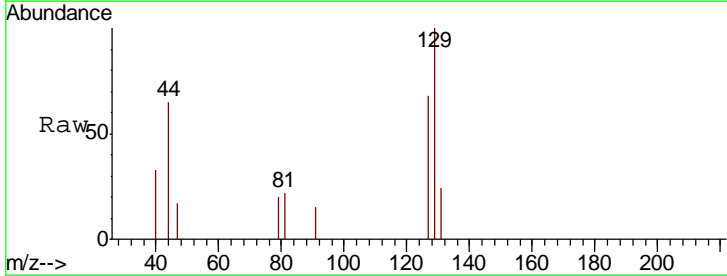
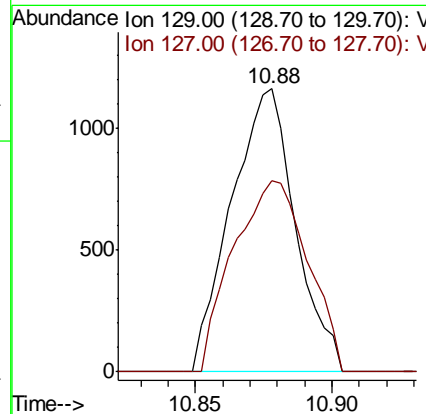
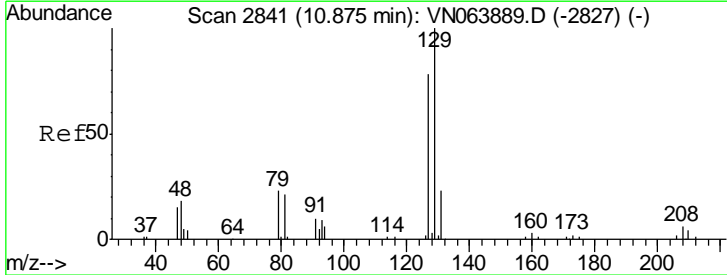
Instrument : MSVOA_N
 ClientSampled : 14B-2

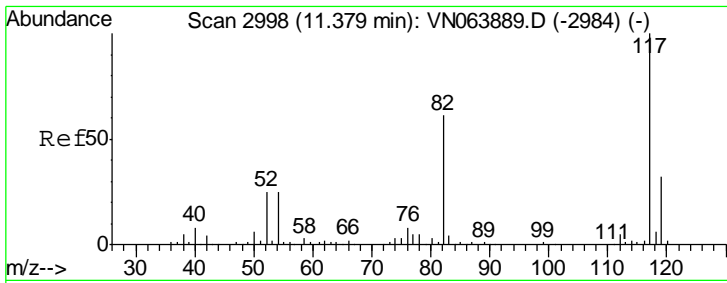
Tgt Ion	Resp	Lower	Upper
76	100	0.0	63.2
78	0.0	0.0	63.2



#53
 Dibromochloromethane
 Concen: 0.606 ug/l
 RT: 10.88 min Scan# 2842
 Delta R.T. 0.01 min
 Lab File: VN064045.D
 Acq: 9 Oct 2020 18:02

Tgt Ion	Resp	Lower	Upper
129	100	38.7	116.1
127	78.2	38.7	116.1

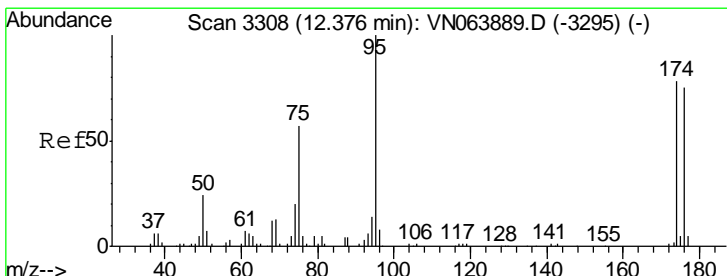
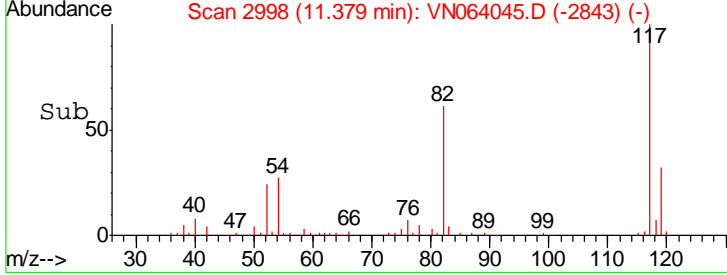
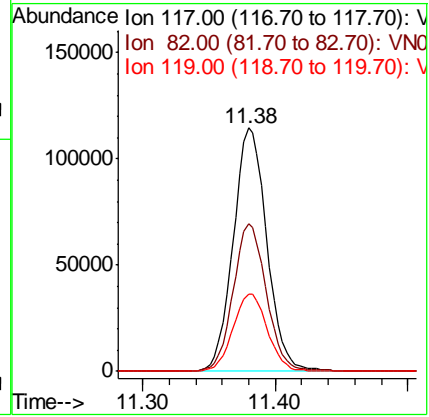
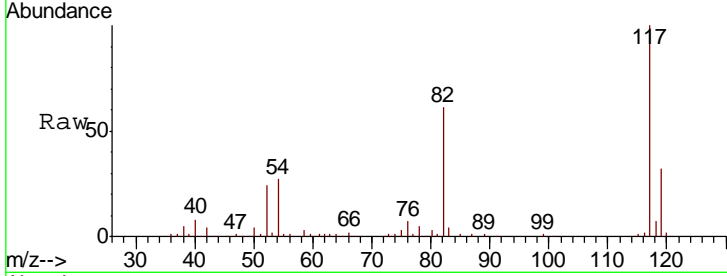




#57
 Chlorobenzene-d5
 Concen: 30.000 ug/l
 RT: 11.38 min Scan# 2998
 Delta R.T. -0.00 min
 Lab File: VN064045.D
 Acq: 9 Oct 2020 18:02

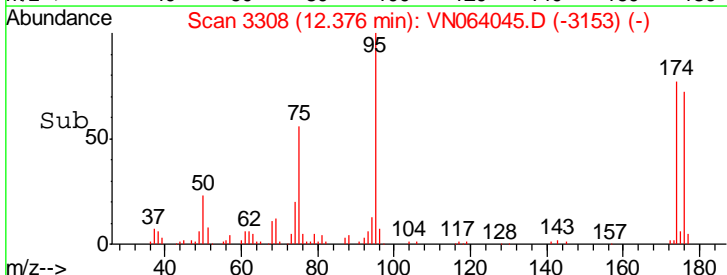
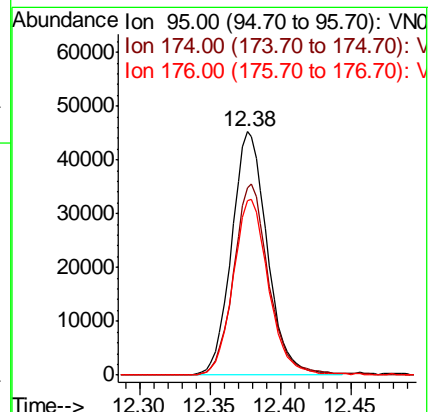
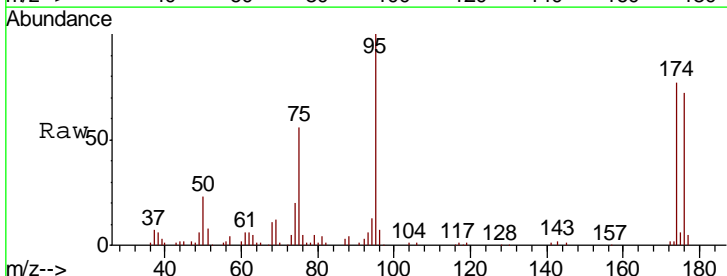
Instrument : MSVOA_N
 ClientSampled : 14B-2

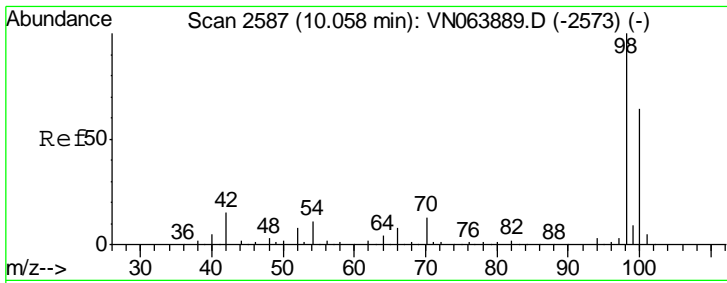
Tgt Ion	Resp	Lower	Upper
117	201202		
82	60.1	44.9	67.3
119	32.6	26.0	39.0



#60
 4-Bromofluorobenzene
 Concen: 23.198 ug/l
 RT: 12.38 min Scan# 3308
 Delta R.T. -0.00 min
 Lab File: VN064045.D
 Acq: 9 Oct 2020 18:02

Tgt Ion	Resp	Lower	Upper
95	79819		
174	77.4	70.1	105.1
176	71.6	66.8	100.2

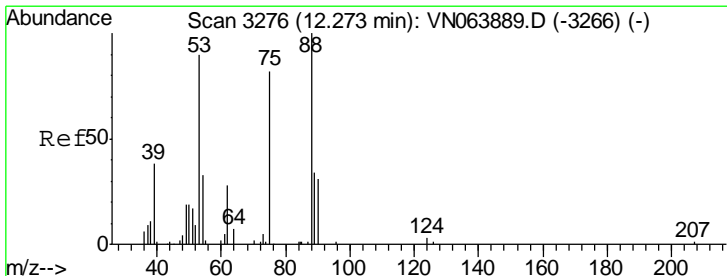
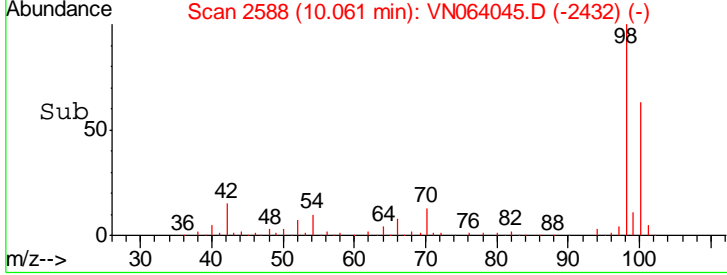
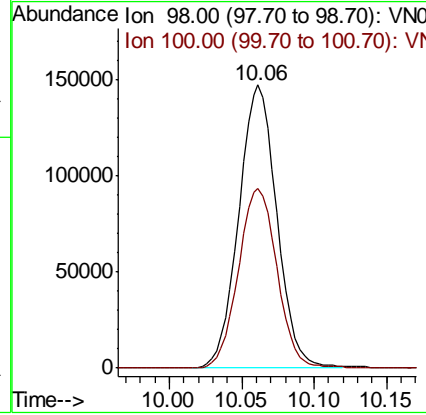
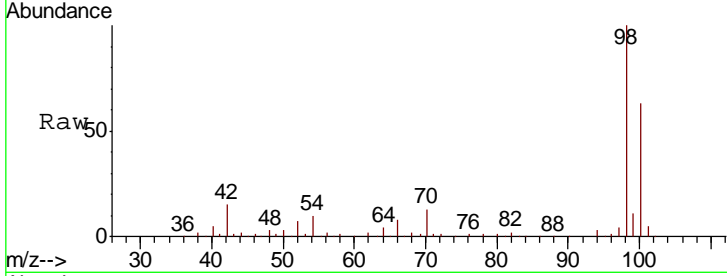




#63
 Toluene-d8
 Concen: 29.465 ug/l
 RT: 10.06 min Scan# 2588
 Delta R.T. 0.00 min
 Lab File: VN064045.D
 Acq: 9 Oct 2020 18:02

Instrument : MSVOA_N
 ClientSampled : 14B-2

Tgt Ion: 98 Resp: 268670
 Ion Ratio Lower Upper
 98 100
 100 64.7 51.4 77.2



#77
 t-1,4-Dichloro-2-butene
 Concen: 32.034 ug/l
 RT: 12.38 min Scan# 3308
 Delta R.T. 0.10 min
 Lab File: VN064045.D
 Acq: 9 Oct 2020 18:02

Tgt Ion: 75 Resp: 43873
 Ion Ratio Lower Upper
 75 100
 53 0.0 47.0 141.0#
 89 0.0 22.9 68.7#

