

Data Path : Z:\VOASRV\HPCHEM1\MSVOA N\DATA\VN101018\
 Data File : VN051795.D
 Acq On : 10 Oct 2018 16:59
 Operator : MD\SY
 Sample : PB113684ZHE#06
 Misc : 5.00mL/MSVOA N/WATER
 ALS Vial : 20 Sample Multiplier: 28

Instrument :
 MSVOA_N
 ClientSampleId :
 PB113684ZHE#06

Quant Time: Oct 11 03:51:21 2018
 Quant Method : Z:\VOASRV\HPCHEM1\MSVOA_N\METHODS\82N100418W.M
 Quant Title : SW846 8260
 QLast Update : Tue Oct 09 06:03:49 2018
 Response via : Initial Calibration

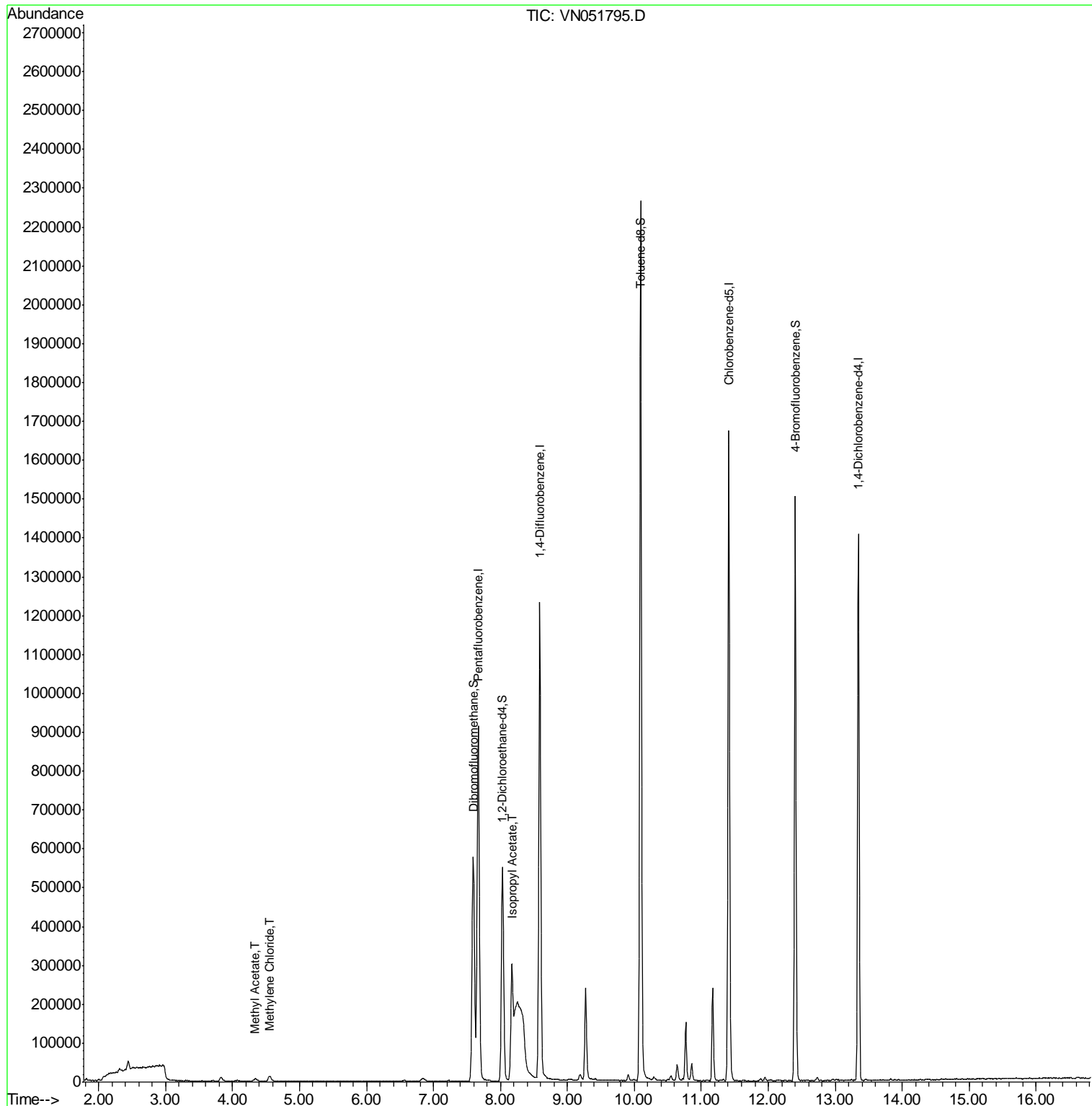
Internal Standards	R.T.	QIon	Response	Conc	Units	Dev(Min)
1) Pentafluorobenzene	7.67	168	811310	50.00	ug/l	0.00
34) 1,4-Difluorobenzene	8.59	114	1174623	50.00	ug/l	0.00
63) Chlorobenzene-d5	11.41	117	1038568	50.00	ug/l	0.00
72) 1,4-Dichlorobenzene-d4	13.35	152	400635	50.00	ug/l	0.00
System Monitoring Compounds						
33) 1,2-Dichloroethane-d4	8.03	65	470665	43.91	ug/l	0.00
Spiked Amount				50.000		
			Recovery	=		87.82%
35) Dibromofluoromethane	7.59	113	431876	47.56	ug/l	0.00
Spiked Amount				50.000		
			Recovery	=		95.12%
50) Toluene-d8	10.09	98	1662000	49.06	ug/l	0.00
Spiked Amount				50.000		
			Recovery	=		98.12%
62) 4-Bromofluorobenzene	12.40	95	480897	40.10	ug/l	0.00
Spiked Amount				50.000		
			Recovery	=		80.20%
Target Compounds						
18) Methyl Acetate	4.33	43	13219	2.235	ug/l	99
20) Methylene Chloride	4.55	84	10430	1.183	ug/l #	95
43) Isopropyl Acetate	8.17	43	377402	28.268	ug/l	95

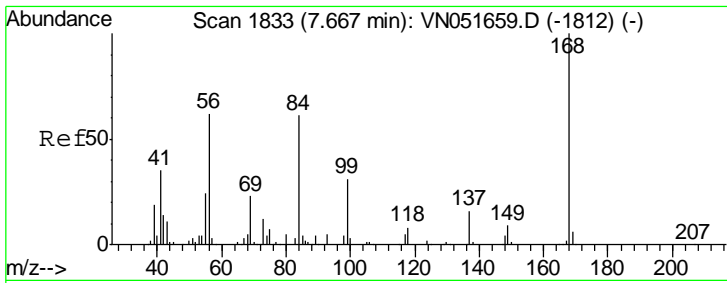
(#) = qualifier out of range (m) = manual integration (+) = signals summed

Data Path : Z:\VOASRV\HPCHEM1\MSVOA N\DATA\VN101018\
 Data File : VN051795.D
 Acq On : 10 Oct 2018 16:59
 Operator : MD\SY
 Sample : PB113684ZHE#06
 Misc : 5.00mL/MSVOA N/WATER
 ALS Vial : 20 Sample Multiplier: 28

Instrument :
 MSVOA_N
 ClientSampleId :
 PB113684ZHE#06

Quant Time: Oct 11 03:51:21 2018
 Quant Method : Z:\VOASRV\HPCHEM1\MSVOA_N\METHODS\82N100418W.M
 Quant Title : SW846 8260
 QLast Update : Tue Oct 09 06:03:49 2018
 Response via : Initial Calibration

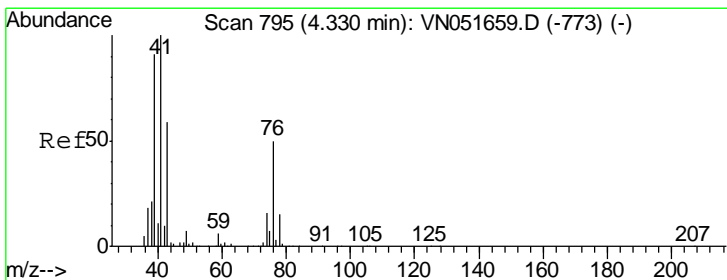
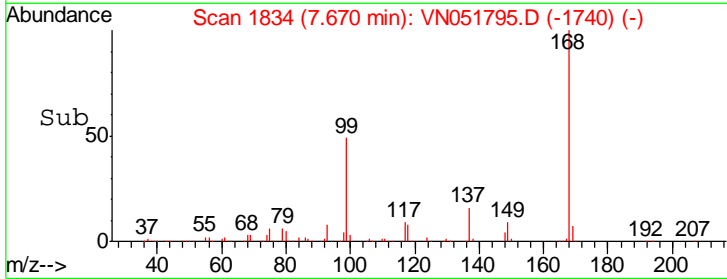
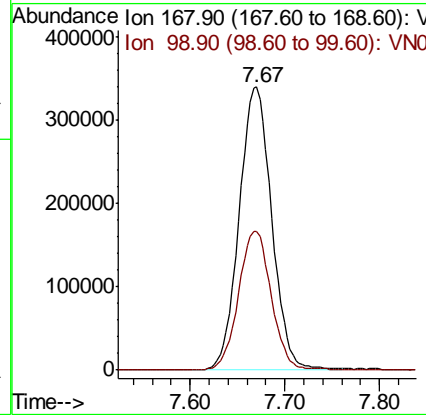
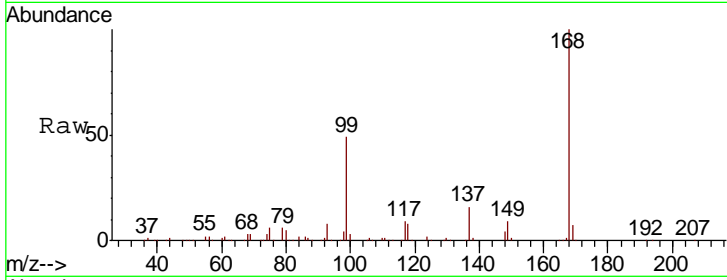




#1
 Pentafluorobenzene
 Concen: 50.000 ug/l
 RT: 7.67 min Scan# 1834
 Delta R.T. 0.00 min
 Lab File: VN051795.D
 Acq: 10 Oct 2018 16:59

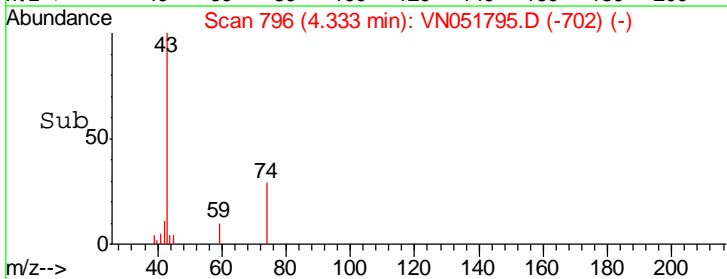
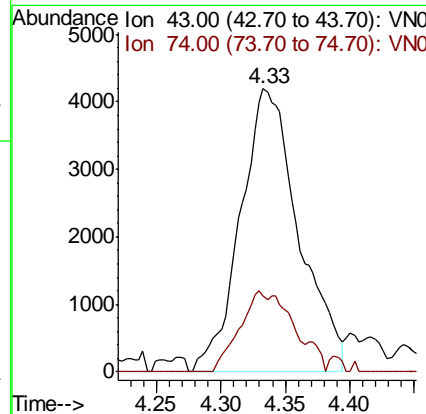
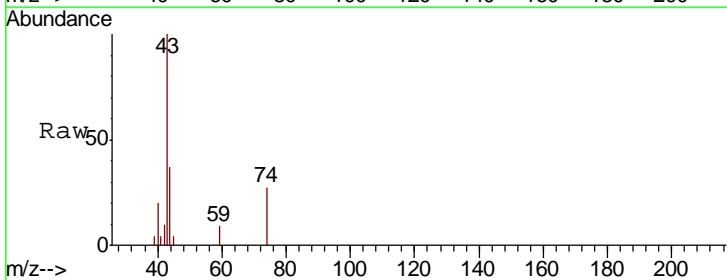
Instrument : MSVOA_N
 ClientSampleId : PB113684ZHE#06

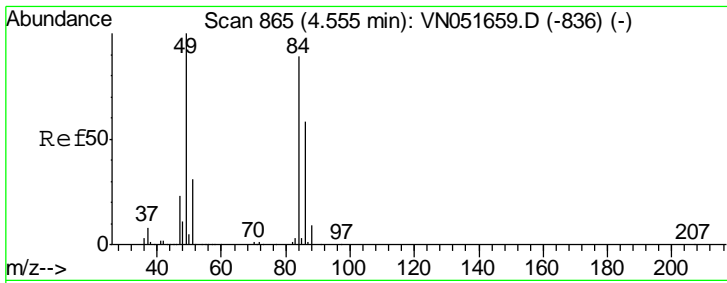
Tgt Ion	Resp	Lower	Upper
168	100		
99	49.0	40.4	60.6



#18
 Methyl Acetate
 Concen: 2.235 ug/l
 RT: 4.33 min Scan# 796
 Delta R.T. 0.00 min
 Lab File: VN051795.D
 Acq: 10 Oct 2018 16:59

Tgt Ion	Resp	Lower	Upper
43	100		
74	26.5	21.5	32.3

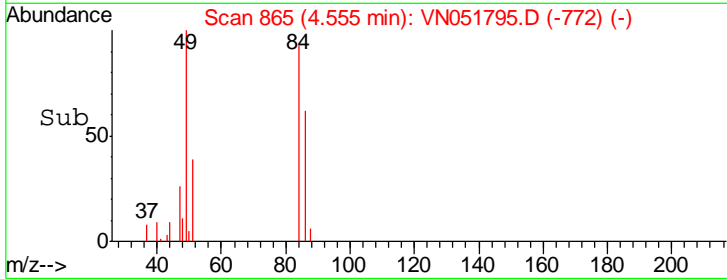
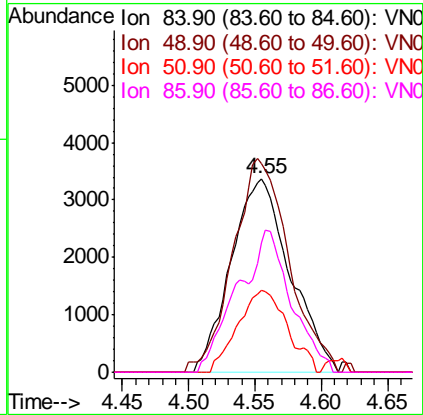
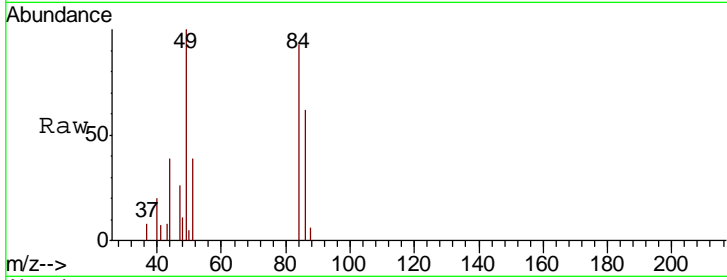




#20
 Methylene Chloride
 Concen: 1.183 ug/l
 RT: 4.55 min Scan# 865
 Delta R.T. 0.00 min
 Lab File: VN051795.D
 Acq: 10 Oct 2018 16:59

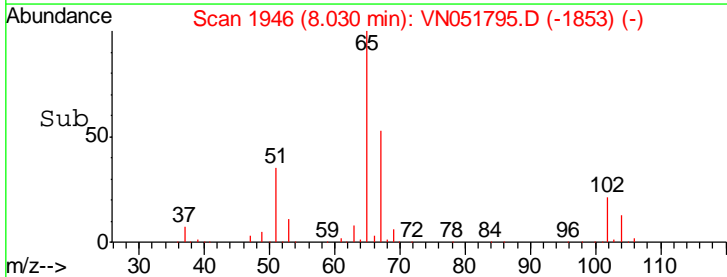
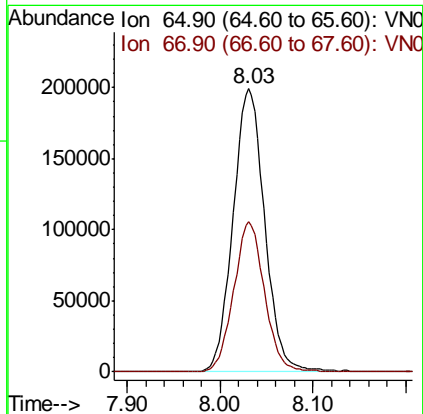
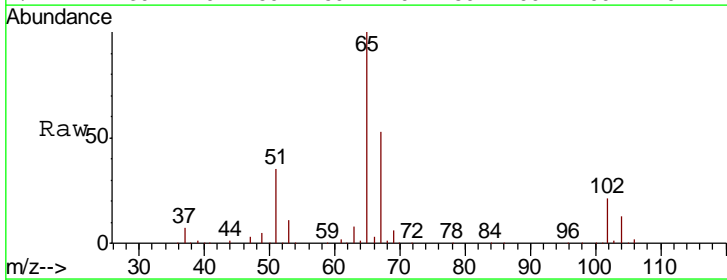
Instrument : MSVOA_N
 ClientSampleID : PB113684ZHE#06

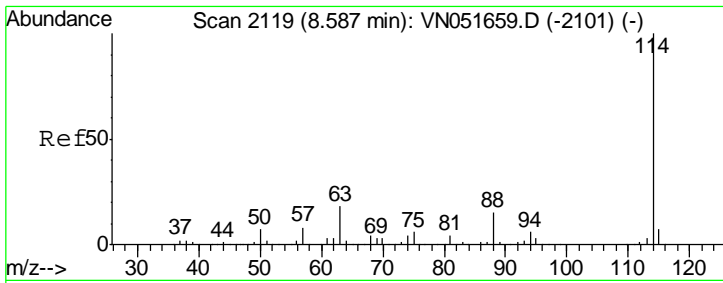
Tgt Ion	Resp	Lower	Upper
84	10430		
49	108.0	89.5	134.3
51	42.1	27.4	41.0#
86	66.8	51.9	77.9



#33
 1,2-Dichloroethane-d4
 Concen: Below ug/l
 RT: 8.03 min Scan# 1946
 Delta R.T. 0.00 min
 Lab File: VN051795.D
 Acq: 10 Oct 2018 16:59

Tgt Ion	Resp	Lower	Upper
65	470665		
67	51.8	0.0	103.6

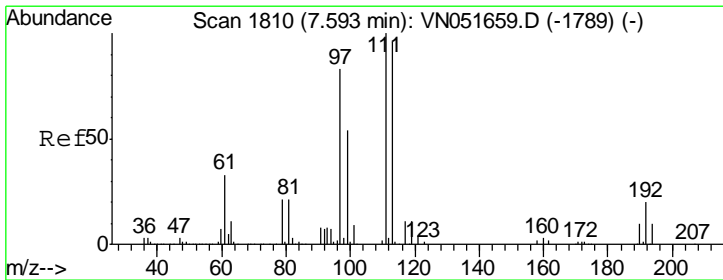
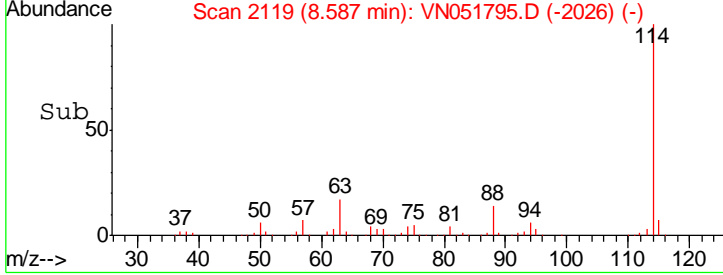
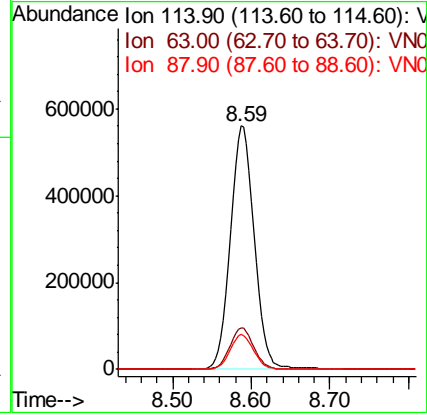
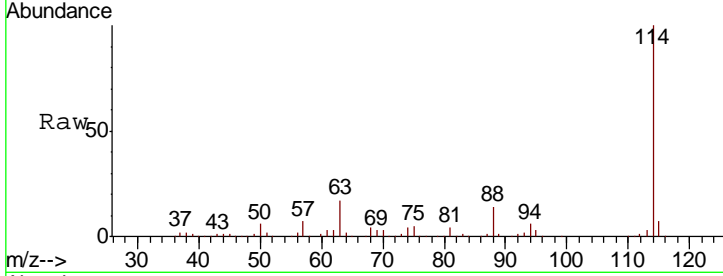




#34
 1,4-Difluorobenzene
 Concen: 50.000 ug/l
 RT: 8.59 min Scan# 2119
 Delta R.T. 0.00 min
 Lab File: VN051795.D
 Acq: 10 Oct 2018 16:59

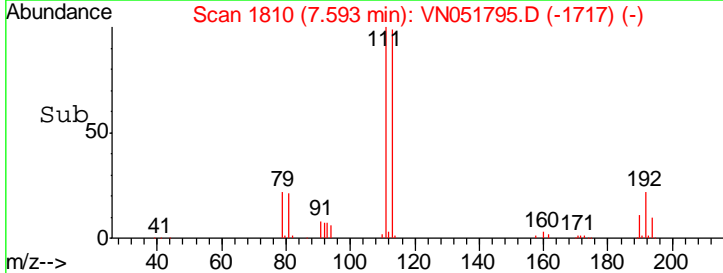
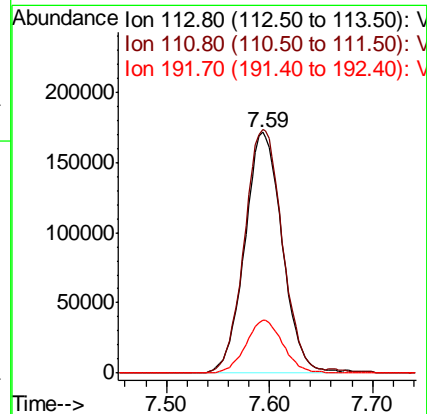
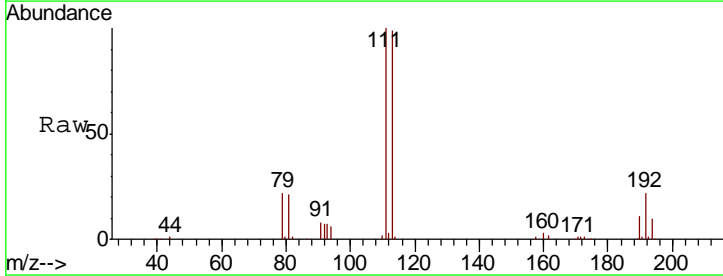
Instrument : MSVOA_N
 ClientSampleID : PB113684ZHE#06

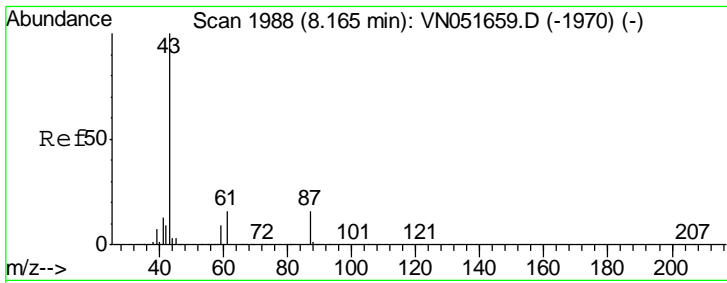
Tgt Ion	Resp	Lower	Upper
114	1174623		
63	17.3	0.0	36.2
88	14.4	0.0	30.2



#35
 Dibromofluoromethane
 Concen: 50.000 ug/l
 RT: 7.59 min Scan# 1810
 Delta R.T. 0.00 min
 Lab File: VN051795.D
 Acq: 10 Oct 2018 16:59

Tgt Ion	Resp	Lower	Upper
113	431876		
111	102.6	81.8	122.8
192	21.8	16.5	24.7

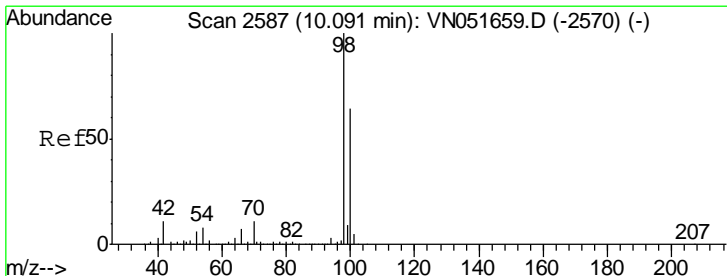
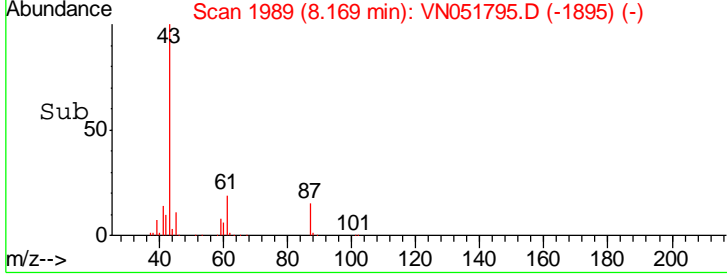
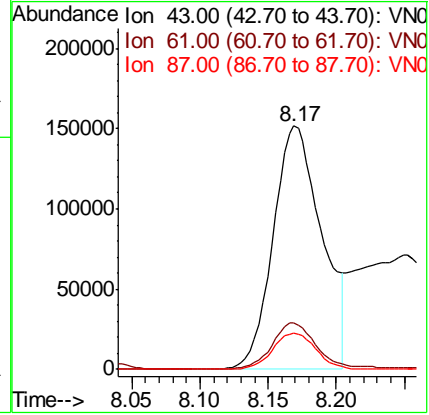
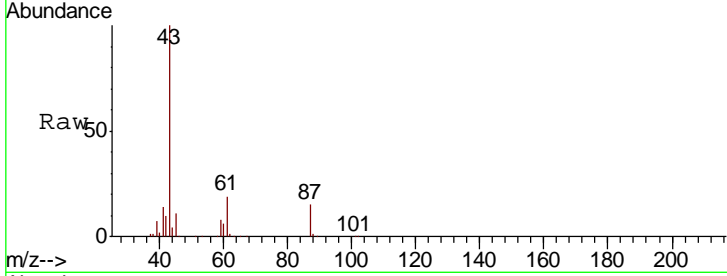




#43
 Isopropyl Acetate
 Concen: 28.268 ug/l
 RT: 8.17 min Scan# 1989
 Delta R.T. 0.00 min
 Lab File: VN051795.D
 Acq: 10 Oct 2018 16:59

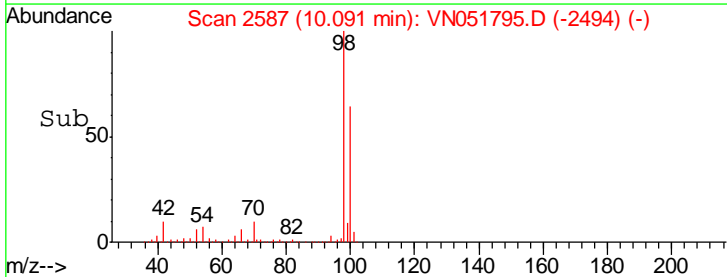
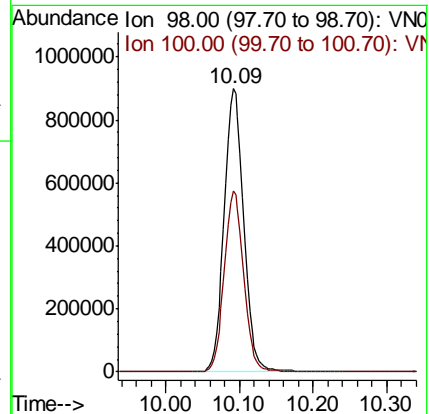
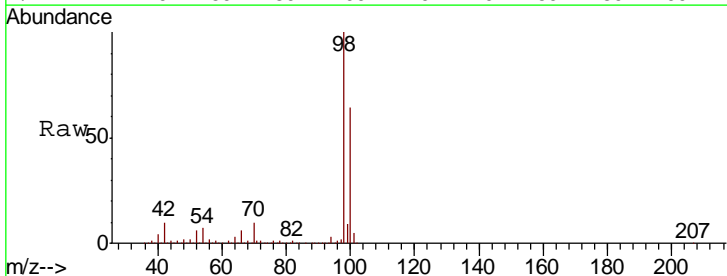
Instrument : MSVOA_N
 ClientSampleID : PB113684ZHE#06

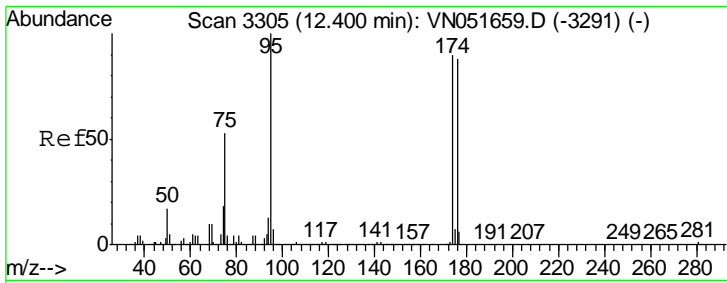
Tgt Ion	Resp	Lower	Upper
43	377402		
61	17.5	15.8	23.6
87	13.1	12.6	19.0



#50
 Toluene-d8
 Concen: N.D. ug/l
 RT: 10.09 min Scan# 2587
 Delta R.T. 0.00 min
 Lab File: VN051795.D
 Acq: 10 Oct 2018 16:59

Tgt Ion	Resp	Lower	Upper
98	1662000		
100	63.6	51.5	77.3

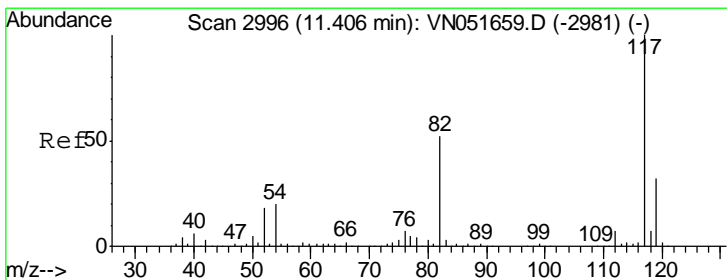
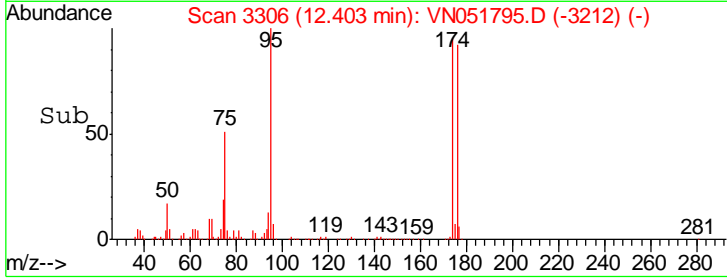
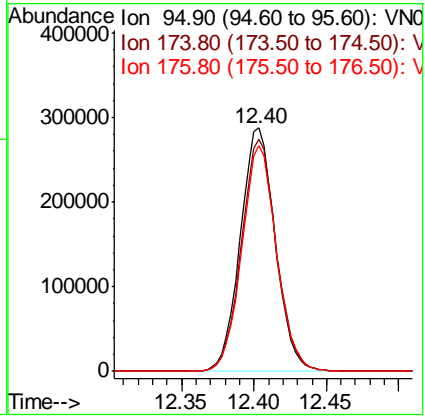
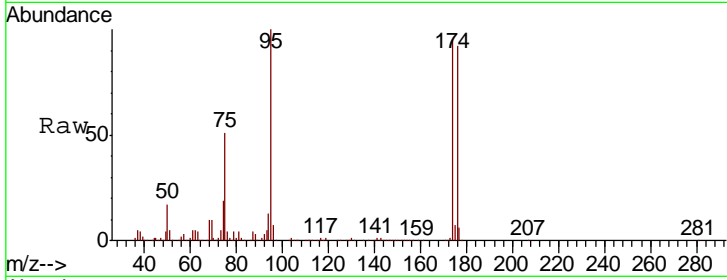




#62
 4-Bromofluorobenzene
 Concen: N.D. ug/l
 RT: 12.40 min Scan# 3306
 Delta R.T. 0.00 min
 Lab File: VN051795.D
 Acq: 10 Oct 2018 16:59

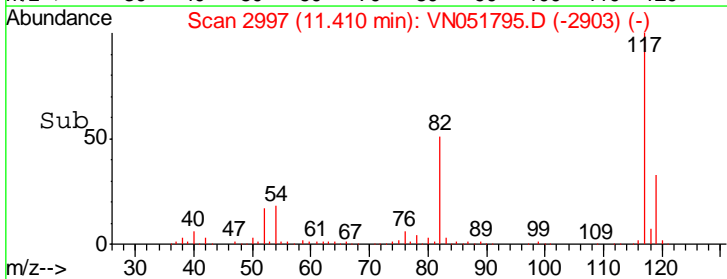
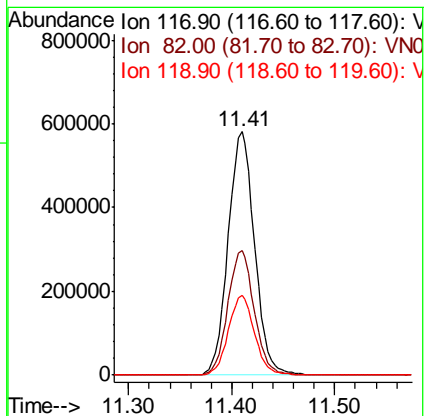
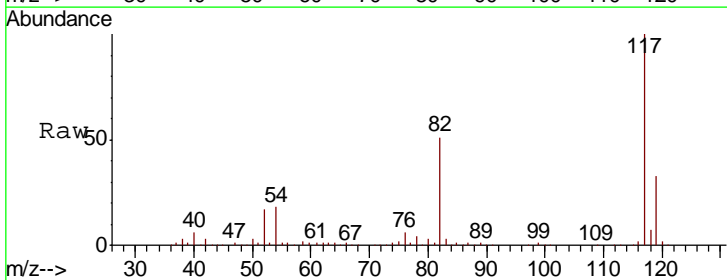
Instrument : MSVOA_N
 ClientSampled : PB113684ZHE#06

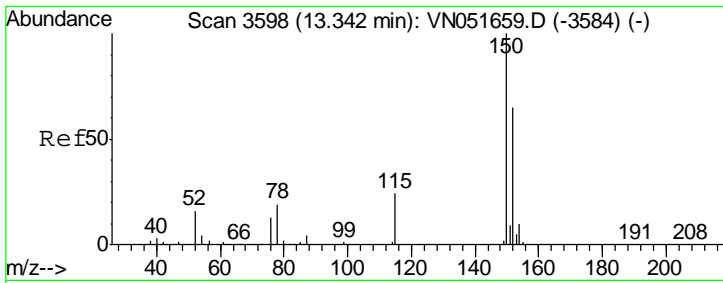
Tgt Ion	Resp	Lower	Upper
95	480897		
174	95.5	0.0	182.8
176	92.1	0.0	176.4



#63
 Chlorobenzene-d5
 Concen: 50.000 ug/l
 RT: 11.41 min Scan# 2997
 Delta R.T. 0.00 min
 Lab File: VN051795.D
 Acq: 10 Oct 2018 16:59

Tgt Ion	Resp	Lower	Upper
117	1038568		
82	51.2	41.3	61.9
119	32.6	25.9	38.9





#72
 1,4-Dichlorobenzene-d4
 Concen: 50.000 ug/l
 RT: 13.35 min Scan# 3599
 Delta R.T. 0.00 min
 Lab File: VN051795.D
 Acq: 10 Oct 2018 16:59

Instrument : MSVOA_N
 ClientSampleId : PB113684ZHE#06

Tot Ion	Resp	Lower	Upper
152	100		
115	54.5	28.6	85.8
150	157.6	0.0	352.4

