

Data Path : Z:\VOASRV\HPCHEM1\MSVOA_N\DATA\VN101019\
 Data File : VN058644.D
 Acq On : 9 Oct 2019 16:58
 Operator : JC/SP
 Sample : K5184-10
 Misc : 5.00mL/MSVOA_N/WATER
 ALS Vial : 5 Sample Multiplier: 1

Instrument :
 MSVOA_N
 ClientSampled :
 TB-100219

Quant Time: Oct 10 04:38:35 2019
 Quant Method : Z:\VOASRV\HPCHEM1\MSVOA_N\METHODS\82N092719W.M
 Quant Title : SW846 8260
 QLast Update : Mon Sep 30 08:07:38 2019
 Response via : Initial Calibration

Internal Standards	R.T.	QIon	Response	Conc	Units	Dev(Min)
1) Pentafluorobenzene	7.65	168	416621	50.00	ug/l	0.00
34) 1,4-Difluorobenzene	8.57	114	655816	50.00	ug/l	0.00
63) Chlorobenzene-d5	11.41	117	576693	50.00	ug/l	0.00
72) 1,4-Dichlorobenzene-d4	13.35	152	229063	50.00	ug/l	0.00

System Monitoring Compounds	R.T.	QIon	Response	Conc	Units	Dev(Min)
33) 1,2-Dichloroethane-d4	8.01	65	295487	48.53	ug/l	0.00
Spiked Amount				50.000		
Recovery						97.06%
35) Dibromofluoromethane	7.57	113	212838	52.95	ug/l	0.00
Spiked Amount				50.000		
Recovery						105.90%
50) Toluene-d8	10.09	98	823671	52.31	ug/l	0.00
Spiked Amount				50.000		
Recovery						104.62%
62) 4-Bromofluorobenzene	12.41	95	272237	47.82	ug/l	0.00
Spiked Amount				50.000		
Recovery						95.64%

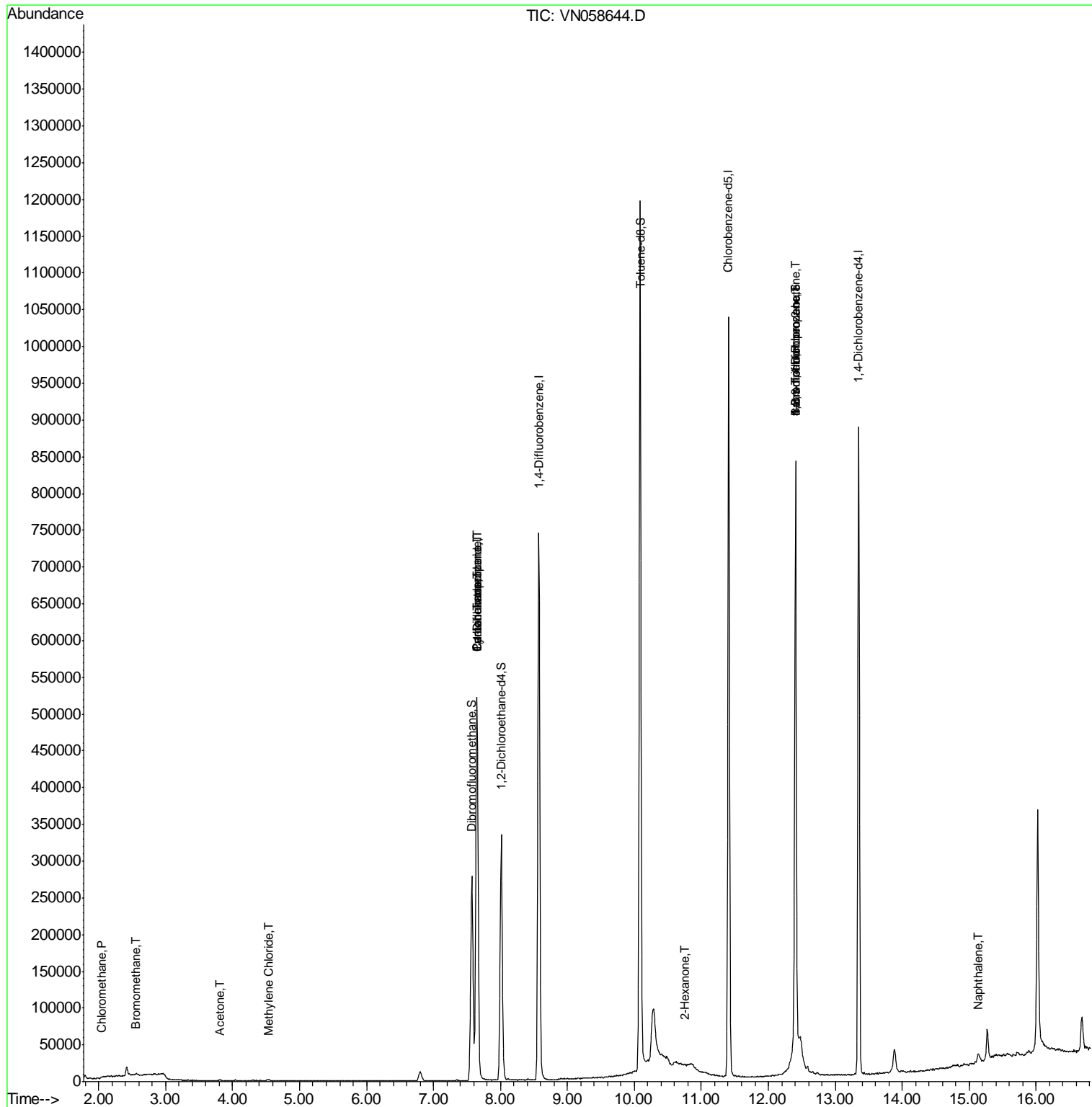
Target Compounds	R.T.	QIon	Response	Conc	Units	Qvalue
3) Chloromethane	2.04	50	1601	0.319	ug/l	94
5) Bromomethane	2.56	94	819	0.313	ug/l #	36
16) Acetone	3.81	43	1217	0.586	ug/l #	47
20) Methylene Chloride	4.54	84	987	0.206	ug/l	94
31) Cyclohexane	7.65	56	9753	1.158	ug/l #	6
36) 1,1-Dichloropropene	7.65	75	33875	5.402	ug/l #	51
38) Carbon Tetrachloride	7.65	117	41361	7.307	ug/l #	16
59) 2-Hexanone	10.75	43	854	0.228	ug/l #	37
60) Dibromochloromethane	10.63	129	145	Below Cal	#	11
71) Bromoform	12.40	173	754	0.973	ug/l #	1
76) 1,2,3-Trichloropropane	12.41	75	142181	33.983	ug/l #	100
81) trans-1,4-Dichloro-2-buten	12.41	75	142181	103.211	ug/l #	7
95) Naphthalene	15.14	128	2712	0.213	ug/l #	93

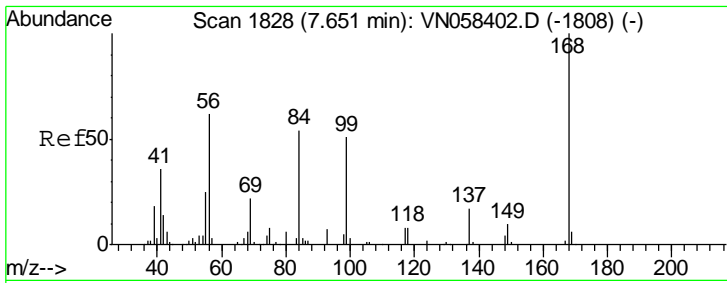
(#) = qualifier out of range (m) = manual integration (+) = signals summed

Data Path : Z:\VOASRV\HPCHEM1\MSVOA_N\DATA\VN101019\
 Data File : VN058644.D
 Acq On : 9 Oct 2019 16:58
 Operator : JC/SP
 Sample : K5184-10
 Misc : 5.00mL/MSVOA_N/WATER
 ALS Vial : 5 Sample Multiplier: 1

Instrument :
 MSVOA_N
 Client Sampled :
 TB-100219

Quant Time: Oct 10 04:38:35 2019
 Quant Method : Z:\VOASRV\HPCHEM1\MSVOA_N\METHODS\82N092719W.M
 Quant Title : SW846 8260
 QLast Update : Mon Sep 30 08:07:38 2019
 Response via : Initial Calibration

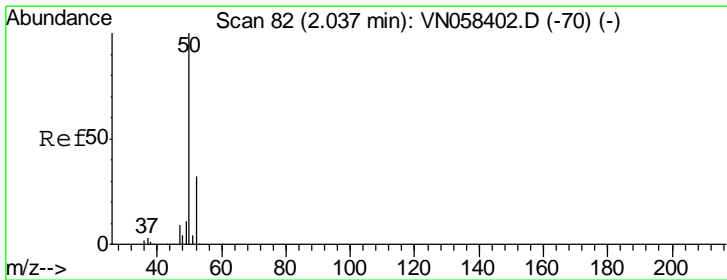
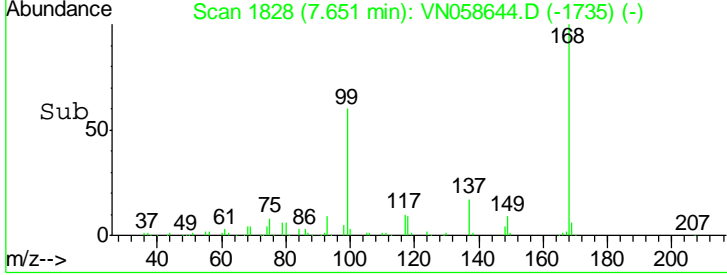
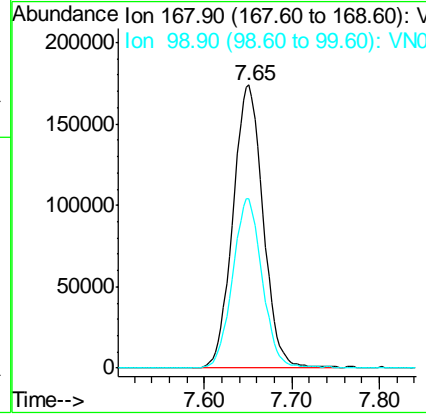
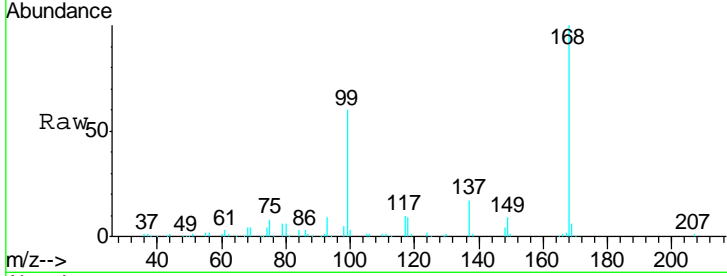




#1
 Pentafluorobenzene
 Concen: 50.000 ug/l
 RT: 7.65 min Scan# 1828
 Delta R.T. 0.00 min
 Lab File: VN058644.D
 Acq: 9 Oct 2019 16:58

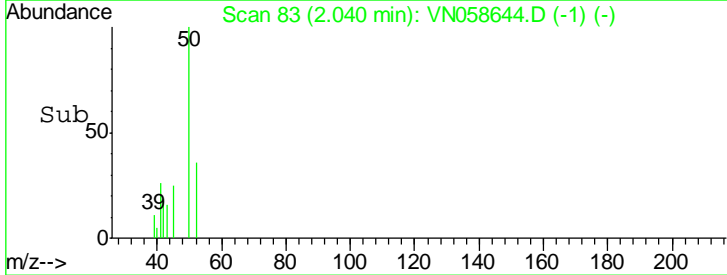
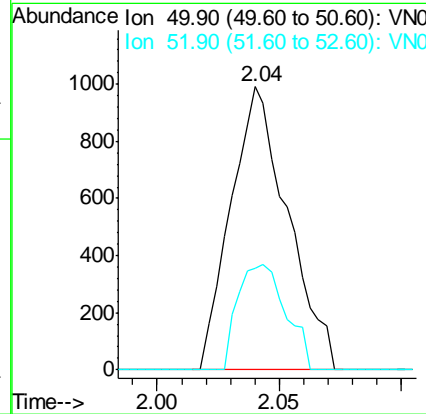
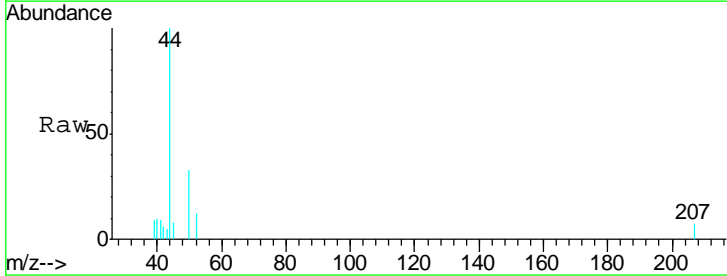
Instrument : MSVOA_N
 ClientSampled : TB-100219

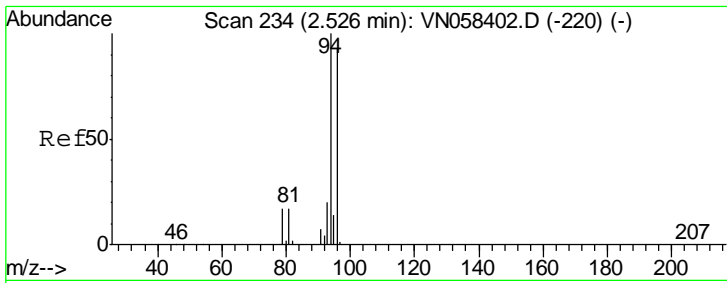
Tgt Ion: 168 Resp: 416621
 Ion Ratio Lower Upper
 168 100
 99 60.0 47.7 71.5



#3
 Chloromethane
 Concen: 0.319 ug/l
 RT: 2.04 min Scan# 83
 Delta R.T. 0.00 min
 Lab File: VN058644.D
 Acq: 9 Oct 2019 16:58

Tgt Ion: 50 Resp: 1601
 Ion Ratio Lower Upper
 50 100
 52 35.9 25.9 38.9

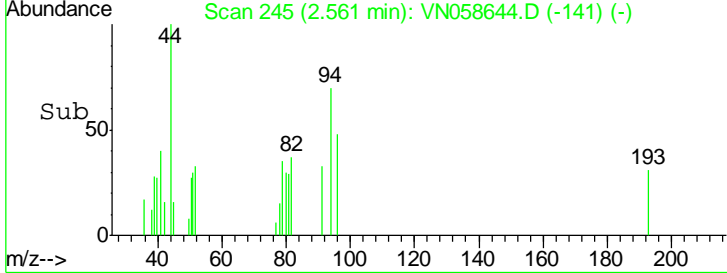
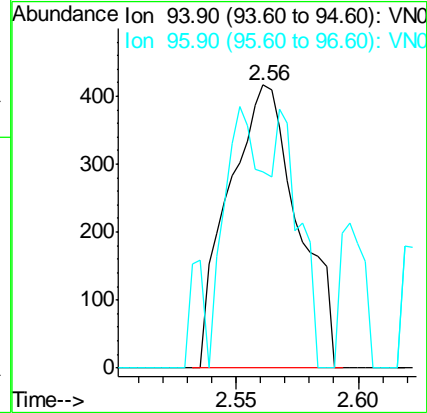
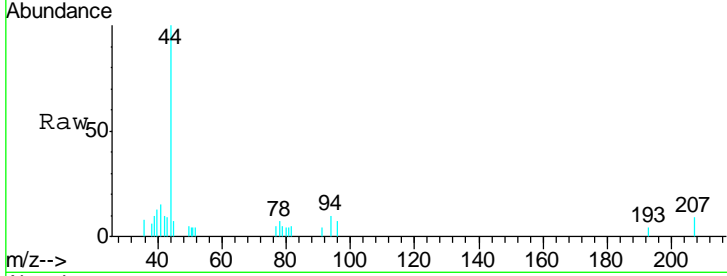




#5
 Bromomethane
 Concen: 0.313 ug/l
 RT: 2.56 min Scan# 245
 Delta R.T. 0.04 min
 Lab File: VN058644.D
 Acq: 9 Oct 2019 16:58

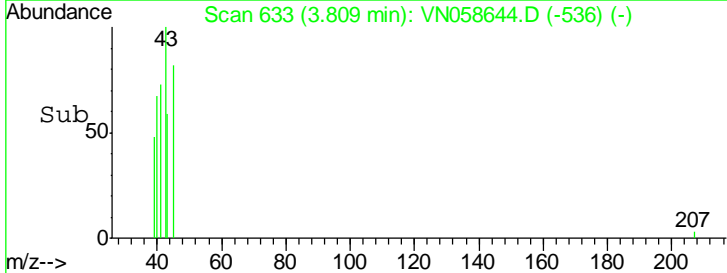
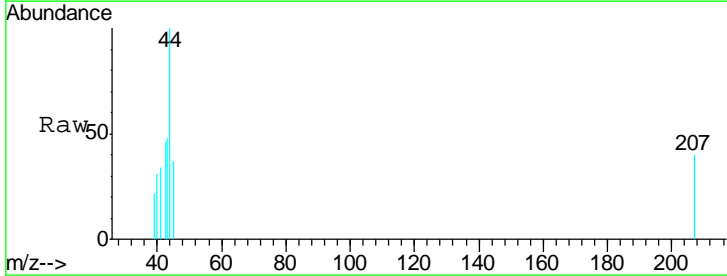
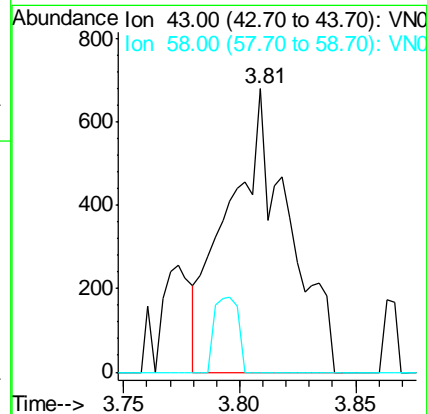
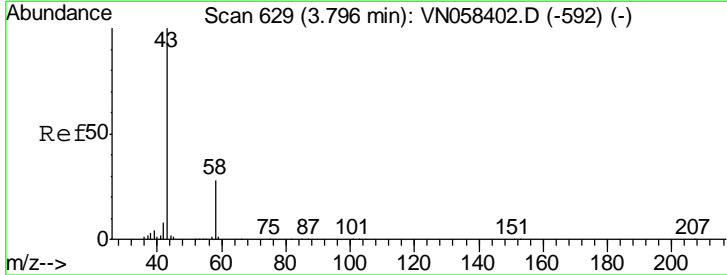
Instrument :
 MSVOA_N
 ClientSampled :
 TB-100219

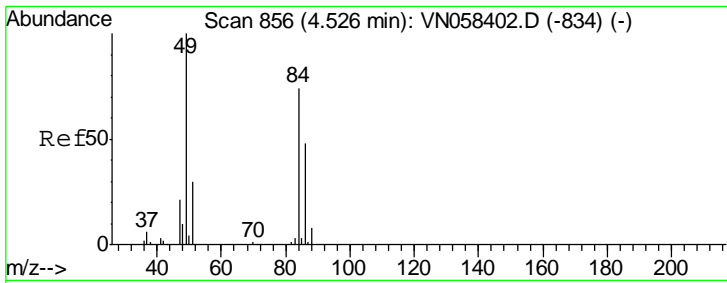
Tgt Ion: 94 Resp: 819
 Ion Ratio Lower Upper
 94 100
 96 32.4 74.8 112.2#



#16
 Acetone
 Concen: 0.586 ug/l
 RT: 3.81 min Scan# 633
 Delta R.T. 0.01 min
 Lab File: VN058644.D
 Acq: 9 Oct 2019 16:58

Tgt Ion: 43 Resp: 1217
 Ion Ratio Lower Upper
 43 100
 58 0.0 22.4 33.6#

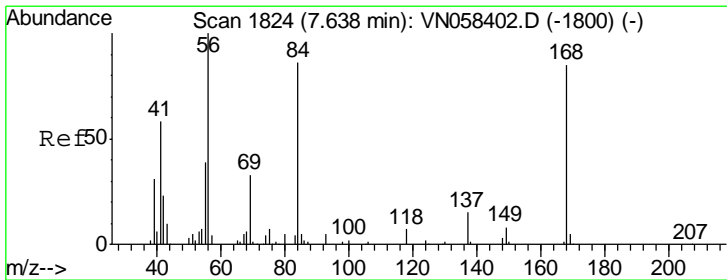
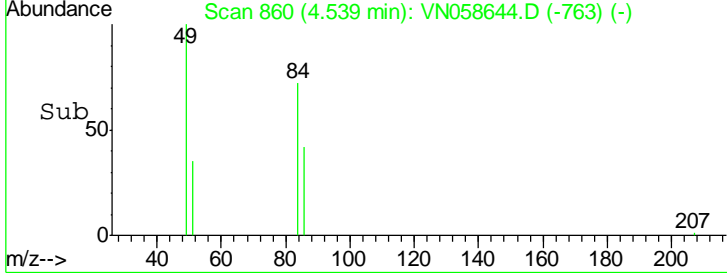
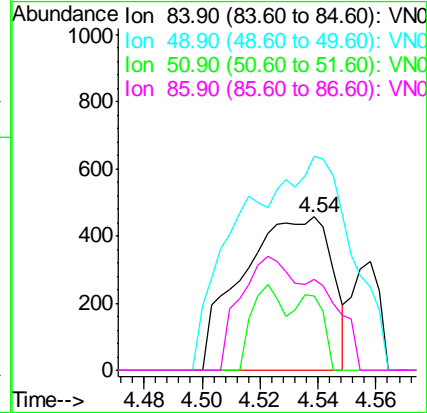
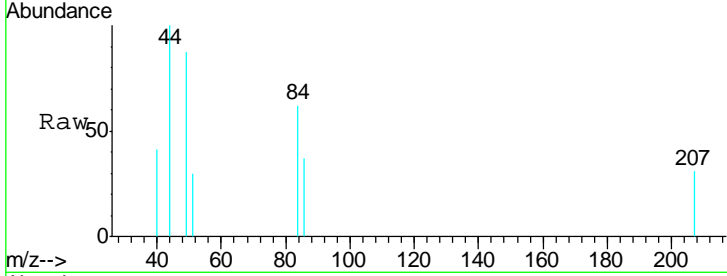




#20
Methylene Chloride
Concen: 0.206 ug/l
RT: 4.54 min Scan# 860
Delta R.T. 0.01 min
Lab File: VN058644.D
Acq: 9 Oct 2019 16:58

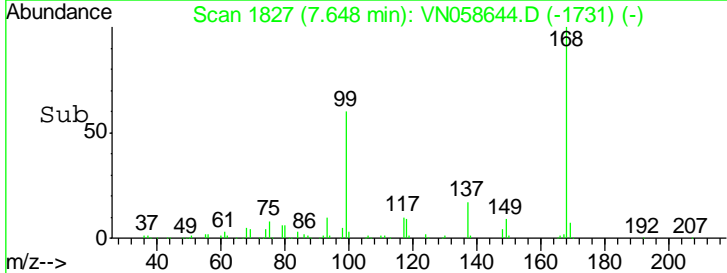
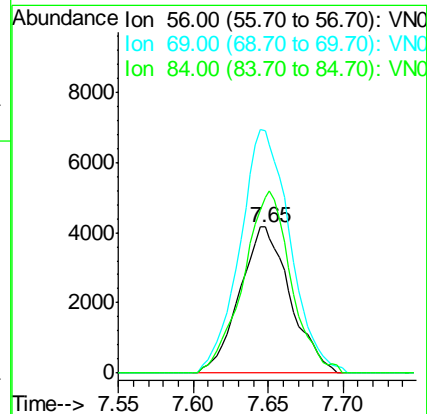
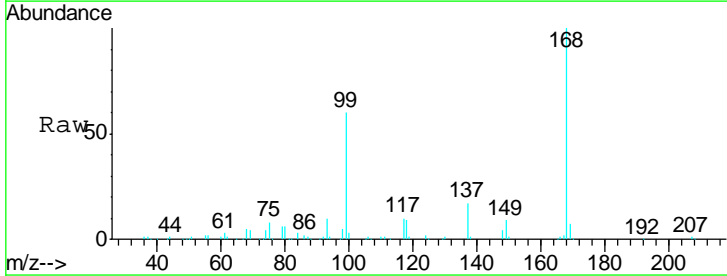
Instrument :
MSVOA_N
ClientSampled :
TB-100219

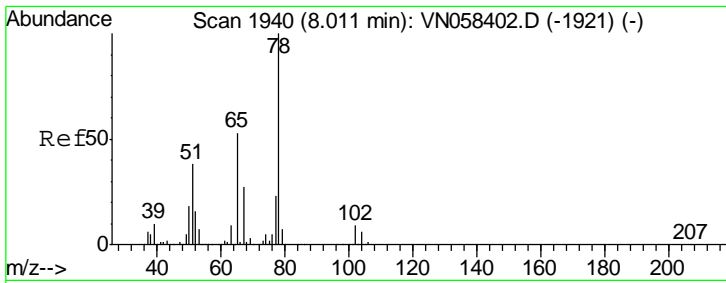
Tgt Ion	Resp	Lower	Upper
84	100		
49	139.2	107.9	161.9
51	48.8	32.8	49.2
86	59.1	51.5	77.3



#31
Cyclohexane
Concen: 1.158 ug/l
RT: 7.65 min Scan# 1827
Delta R.T. 0.01 min
Lab File: VN058644.D
Acq: 9 Oct 2019 16:58

Tgt Ion	Resp	Lower	Upper
56	100		
69	165.5	26.2	39.4#
84	120.5	67.6	101.4#

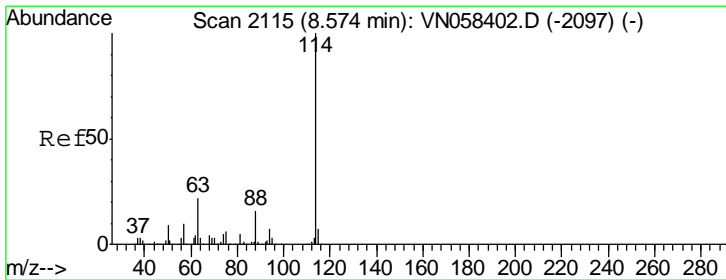
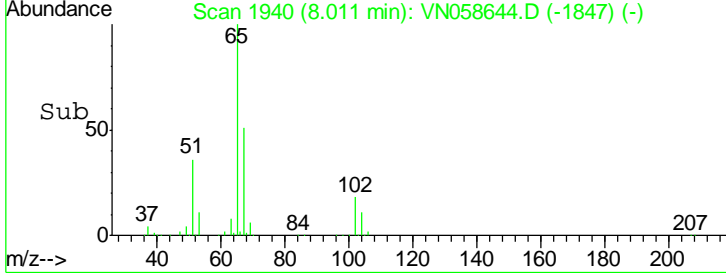
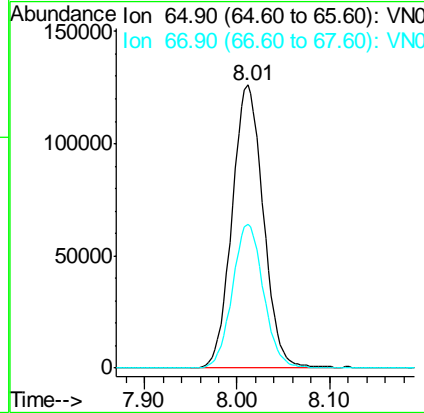
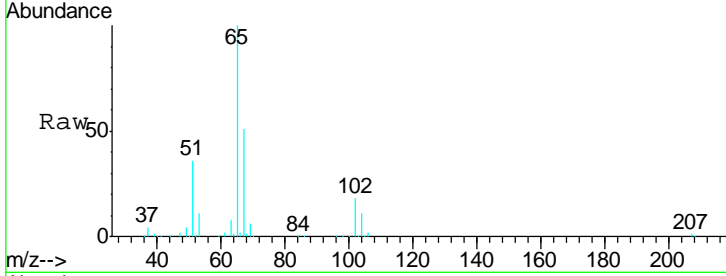




#33
 1,2-Dichloroethane-d4
 Concen: 48.534 ug/l
 RT: 8.01 min Scan# 1940
 Delta R.T. 0.00 min
 Lab File: VN058644.D
 Acq: 9 Oct 2019 16:58

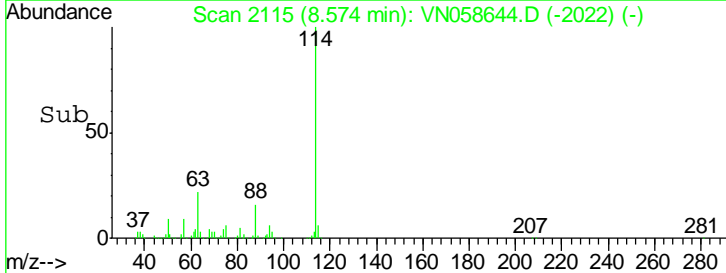
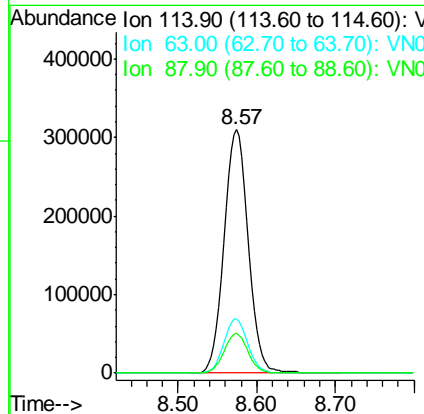
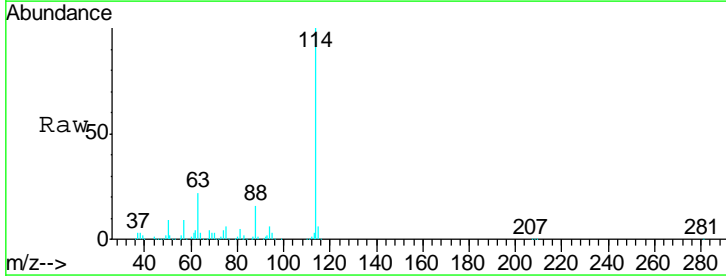
Instrument :
 MSVOA_N
ClientSampled :
 TB-100219

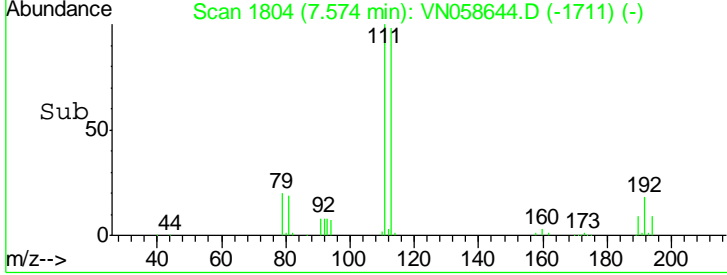
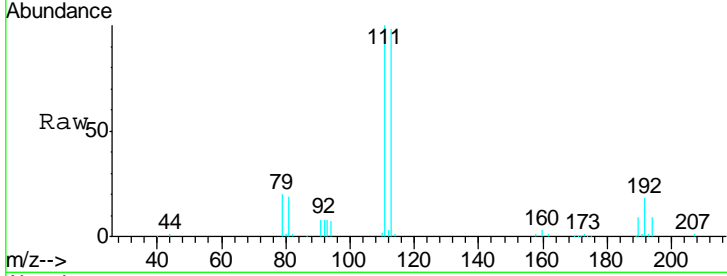
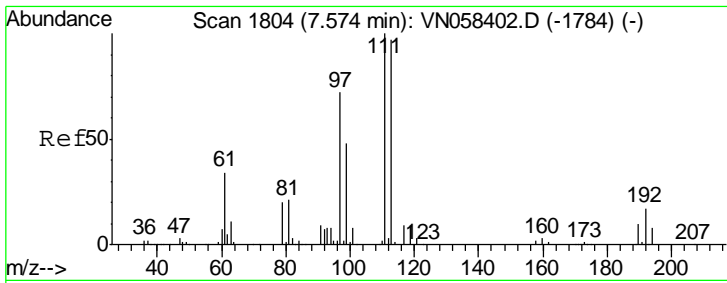
Tgt Ion	Resp	Lower	Upper
65	100		
67	50.6	0.0	102.4



#34
 1,4-Difluorobenzene
 Concen: 50.000 ug/l
 RT: 8.57 min Scan# 2115
 Delta R.T. 0.00 min
 Lab File: VN058644.D
 Acq: 9 Oct 2019 16:58

Tgt Ion	Resp	Lower	Upper
114	100		
63	22.3	0.0	45.0
88	16.2	0.0	32.2

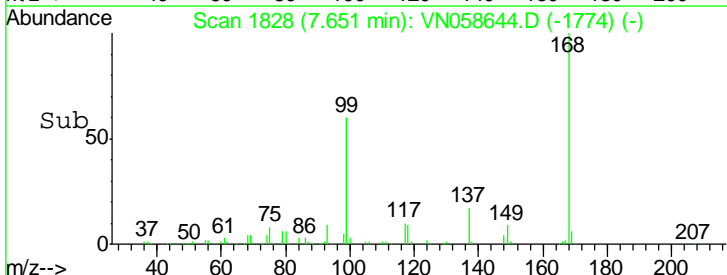
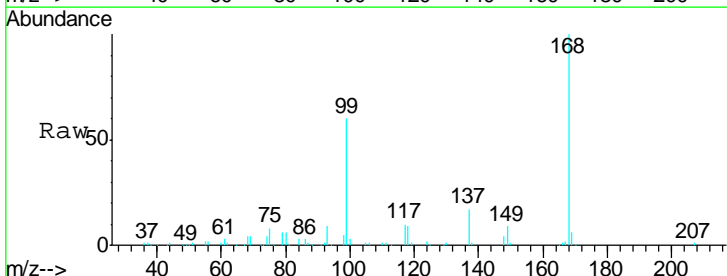
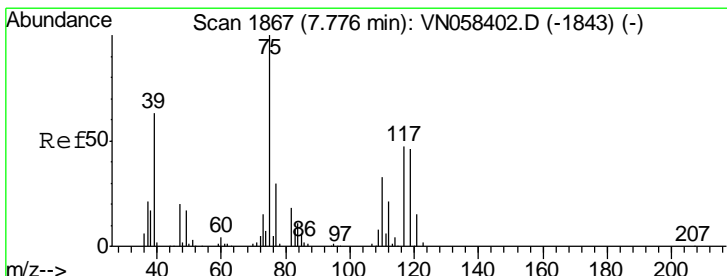
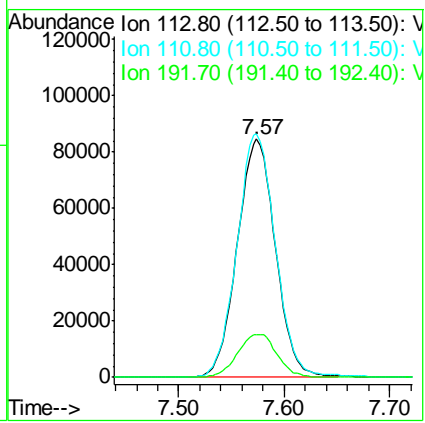




#35
 Dibromofluoromethane
 Concen: 52.952 ug/l
 RT: 7.57 min Scan# 1804
 Delta R.T. 0.00 min
 Lab File: VN058644.D
 Acq: 9 Oct 2019 16:58

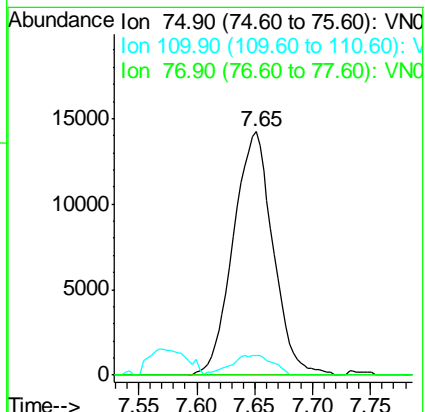
Instrument :
 MSVOA_N
 ClientSampled :
 TB-100219

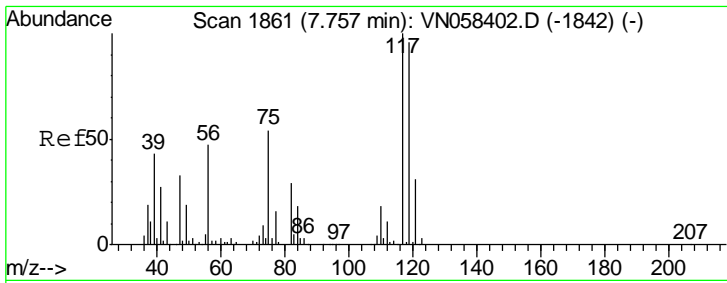
Tgt Ion	Resp	Lower	Upper
113	212838		
113	100		
111	102.6	83.4	125.2
192	18.8	14.9	22.3



#36
 1,1-Dichloropropene
 Concen: 5.402 ug/l
 RT: 7.65 min Scan# 1828
 Delta R.T. -0.13 min
 Lab File: VN058644.D
 Acq: 9 Oct 2019 16:58

Tgt Ion	Resp	Lower	Upper
75	33875		
75	100		
110	8.6	16.4	49.2#
77	0.0	24.3	36.5#

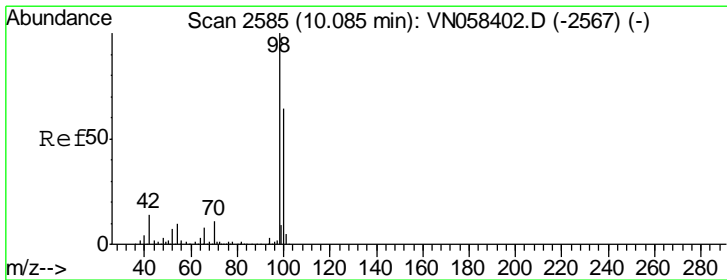
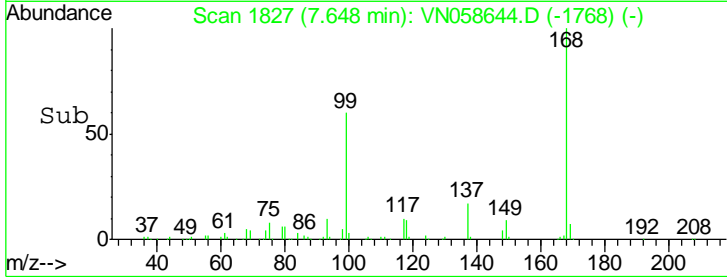
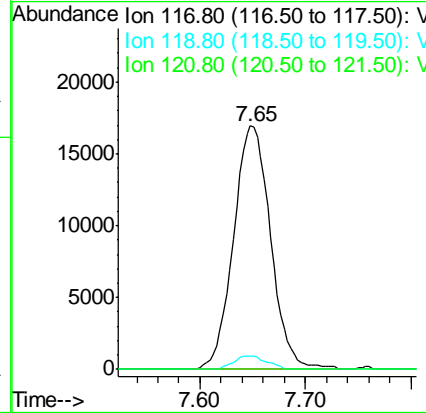
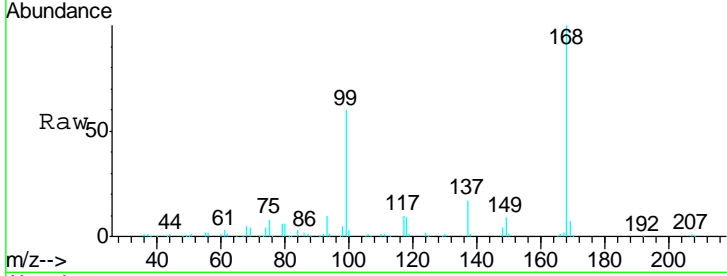




#38
 Carbon Tetrachloride
 Concen: 7.307 ug/l
 RT: 7.65 min Scan# 1827
 Delta R.T. -0.11 min
 Lab File: VN058644.D
 Acq: 9 Oct 2019 16:58

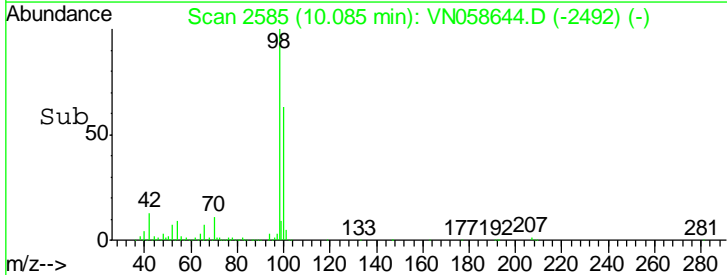
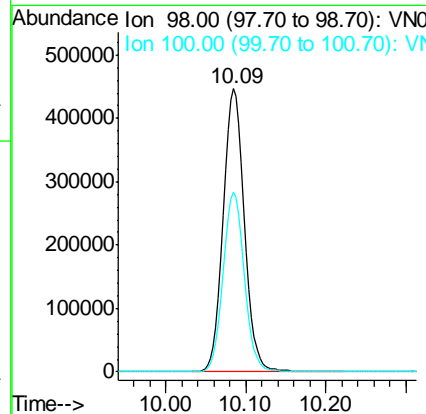
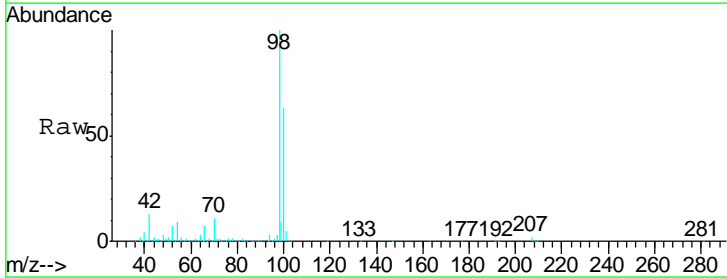
Instrument :
 MSVOA_N
 ClientSampled :
 TB-100219

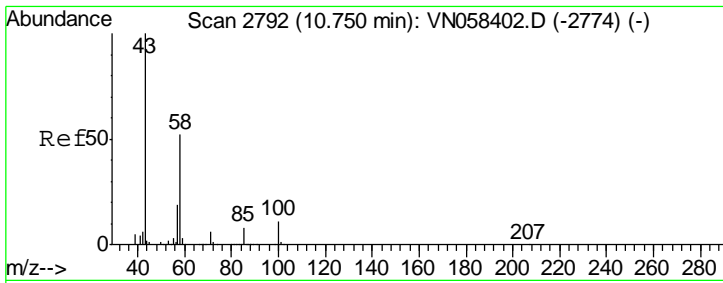
Tgt Ion	Resp	Lower	Upper
117	41361		
119	5.5	76.6	115.0#
121	0.0	24.7	37.1#



#50
 Toluene-d8
 Concen: 52.311 ug/l
 RT: 10.09 min Scan# 2585
 Delta R.T. 0.00 min
 Lab File: VN058644.D
 Acq: 9 Oct 2019 16:58

Tgt Ion	Resp	Lower	Upper
98	823671		
100	63.7	51.0	76.6

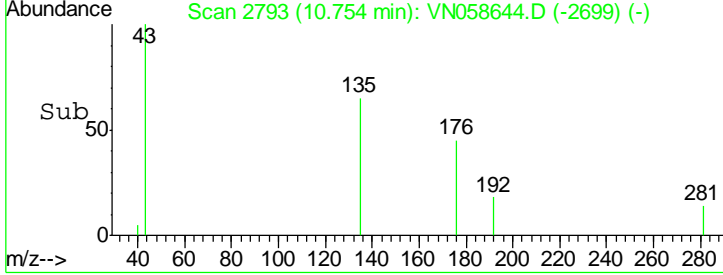
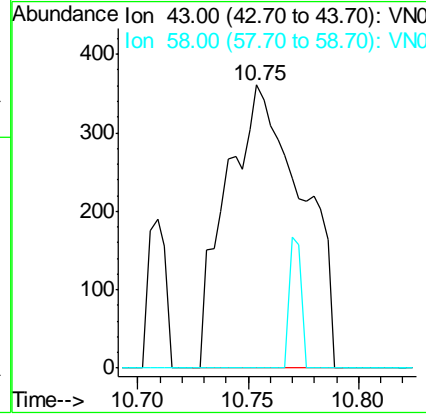
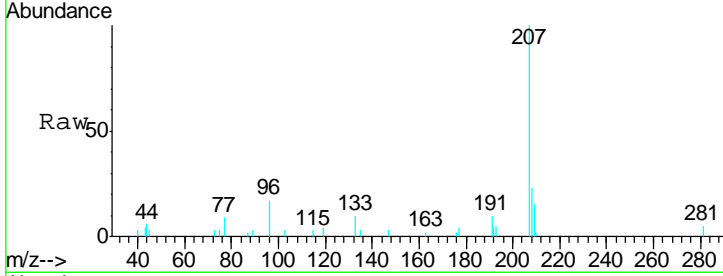




#59
 2-Hexanone
 Concen: 0.228 ug/l
 RT: 10.75 min Scan# 2793
 Delta R.T. 0.00 min
 Lab File: VN058644.D
 Acq: 9 Oct 2019 16:58

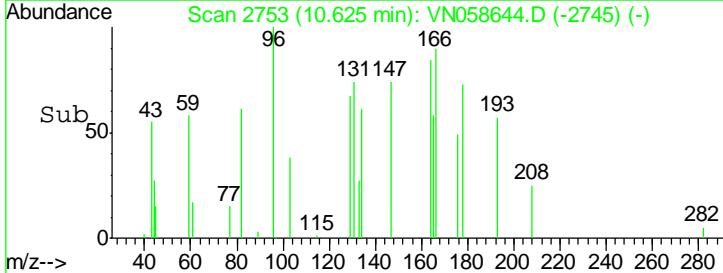
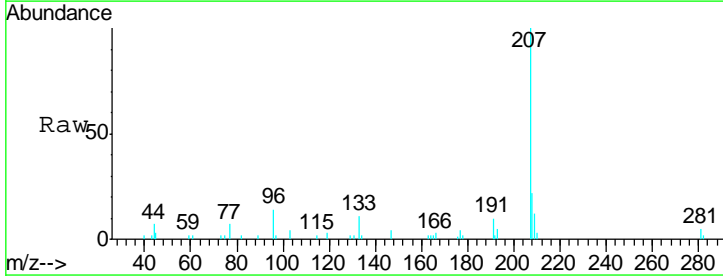
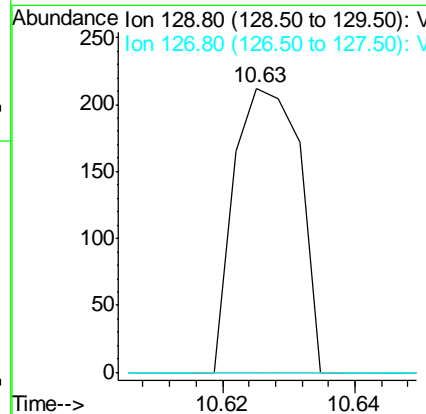
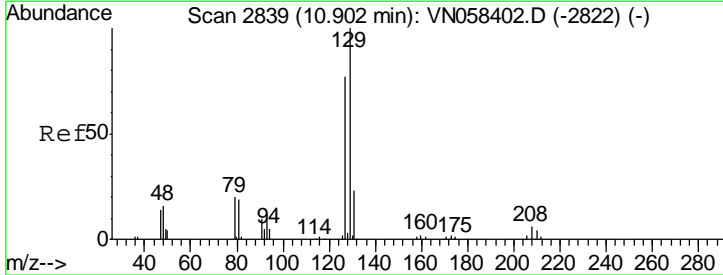
Instrument : MSVOA_N
 Client Sampled : TB-100219

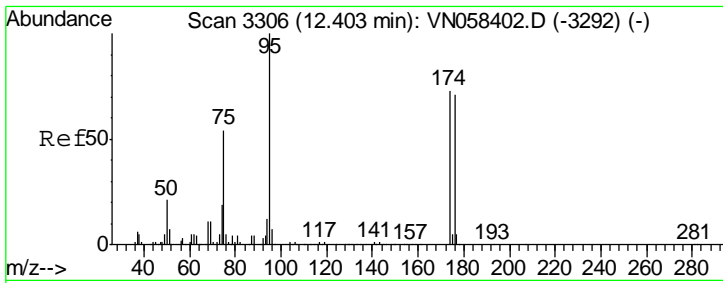
Tgt Ion: 43 Resp: 854
 Ion Ratio Lower Upper
 43 100
 58 7.3 25.8 77.3#



#60
 Dibromochloromethane
 Concen: Below Cal
 RT: 10.63 min Scan# 2753
 Delta R.T. -0.28 min
 Lab File: VN058644.D
 Acq: 9 Oct 2019 16:58

Tgt Ion: 129 Resp: 145
 Ion Ratio Lower Upper
 129 100
 127 0.0 38.3 114.8#

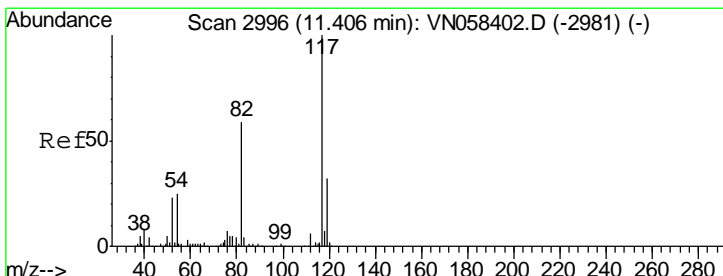
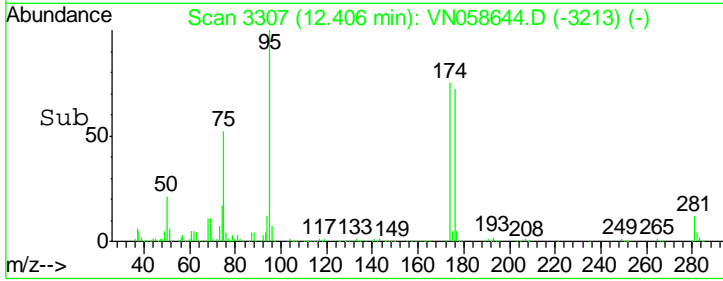
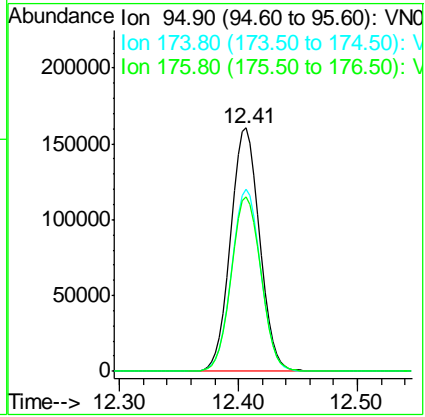
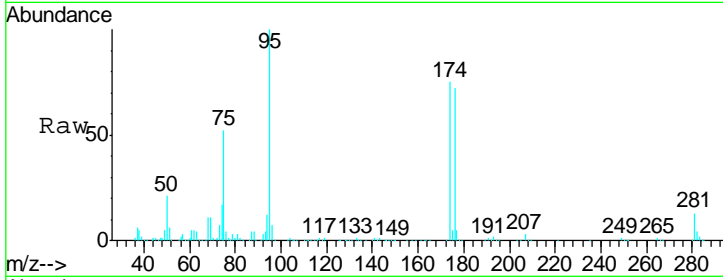




#62
 4-Bromofluorobenzene
 Concen: 47.816 ug/l
 RT: 12.41 min Scan# 3307
 Delta R.T. 0.00 min
 Lab File: VN058644.D
 Acq: 9 Oct 2019 16:58

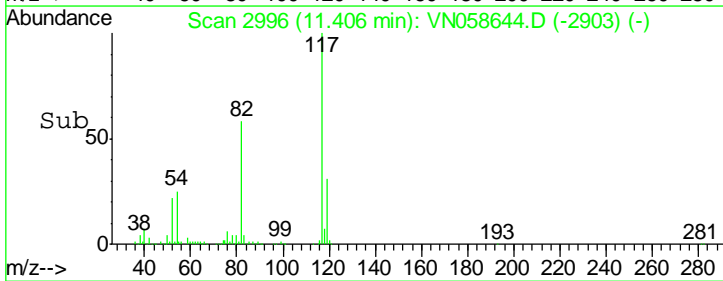
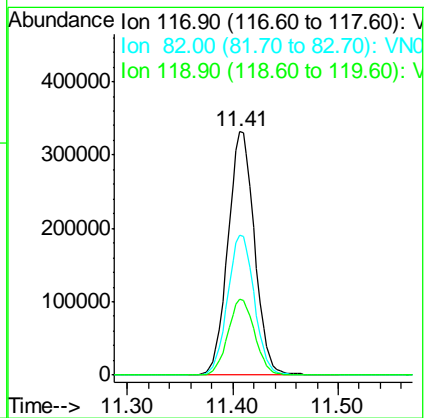
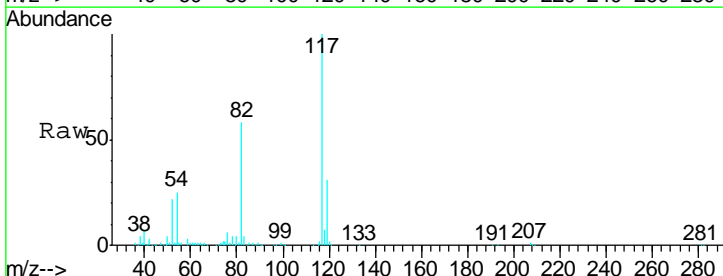
Instrument : MSVOA_N
 ClientSampled : TB-100219

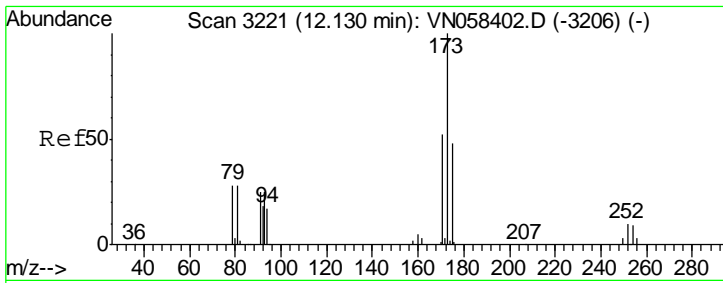
Tgt Ion	Resp	Lower	Upper
95	272237		
174	75.4	0.0	150.6
176	73.5	0.0	146.2



#63
 Chlorobenzene-d5
 Concen: 50.000 ug/l
 RT: 11.41 min Scan# 2996
 Delta R.T. 0.00 min
 Lab File: VN058644.D
 Acq: 9 Oct 2019 16:58

Tgt Ion	Resp	Lower	Upper
117	576693		
82	57.6	47.4	71.0
119	31.0	25.5	38.3

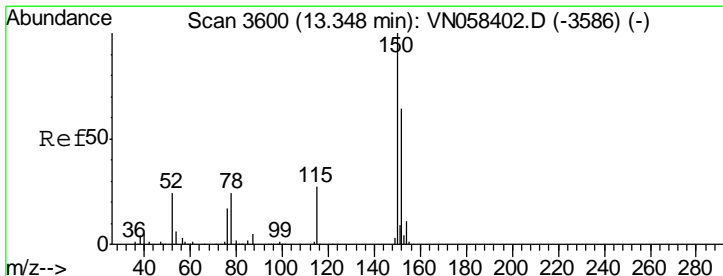
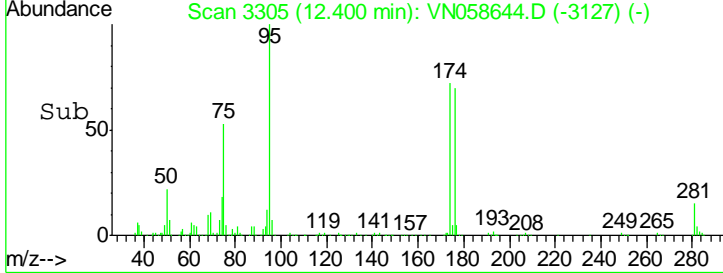
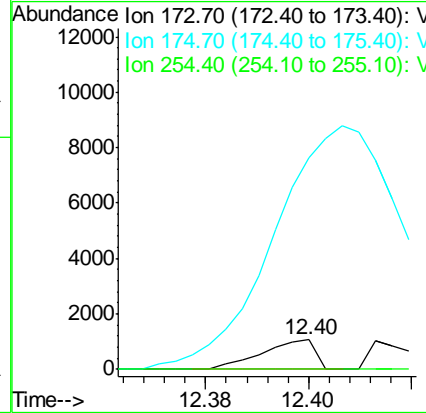
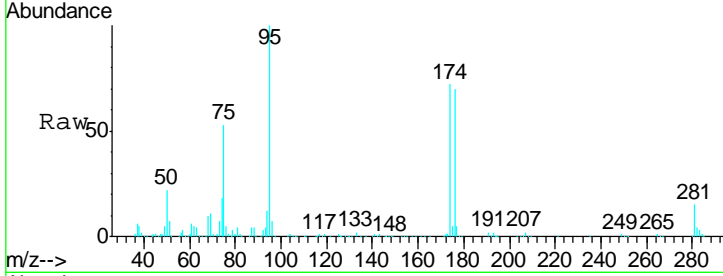




#71
 Bromoform
 Concen: 0.973 ug/l
 RT: 12.40 min Scan# 3305
 Delta R.T. 0.27 min
 Lab File: VN058644.D
 Acq: 9 Oct 2019 16:58

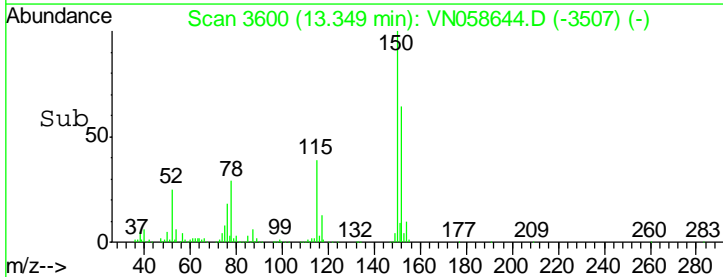
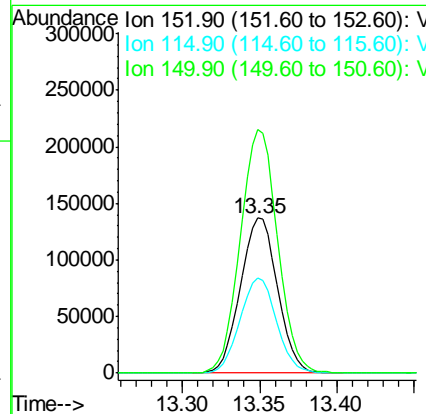
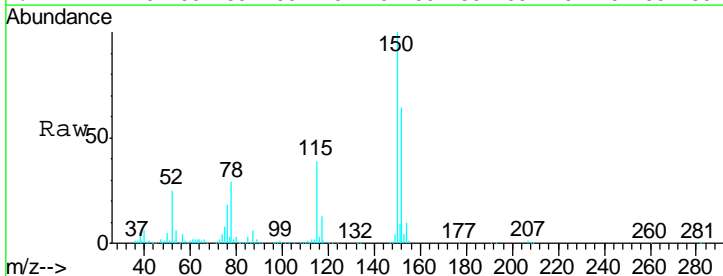
Instrument : MSVOA_N
 ClientSampled : TB-100219

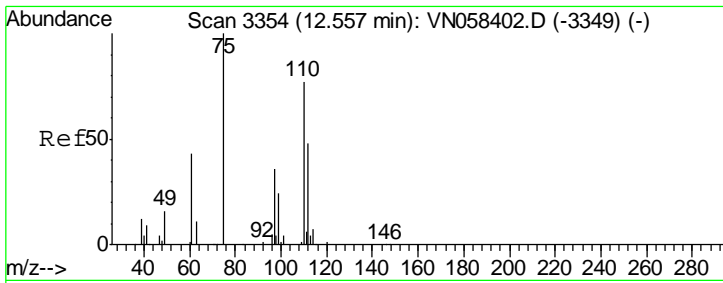
Tgt Ion	Resp	Lower	Upper
173	100		
175	1727.5	24.3	73.0#
254	0.0	0.1	0.1#



#72
 1,4-Dichlorobenzene-d4
 Concen: 50.000 ug/l
 RT: 13.35 min Scan# 3600
 Delta R.T. 0.00 min
 Lab File: VN058644.D
 Acq: 9 Oct 2019 16:58

Tgt Ion	Resp	Lower	Upper
152	100		
115	60.3	30.0	90.0
150	157.4	0.0	348.2

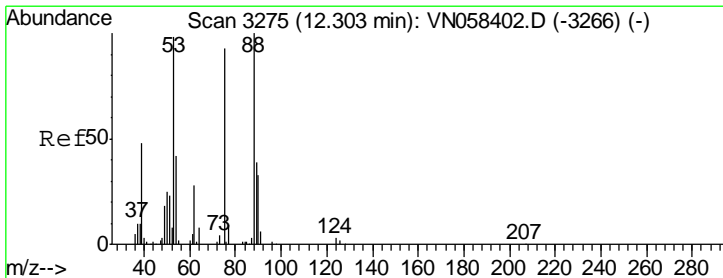
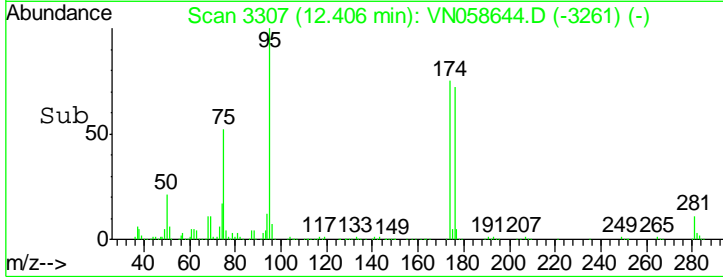
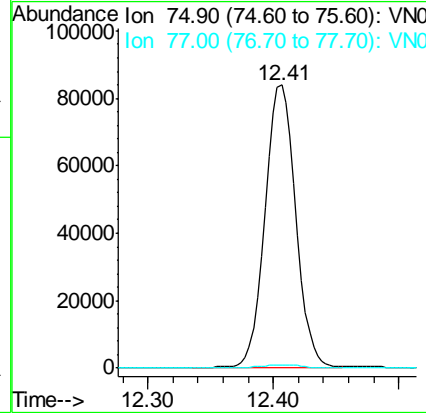
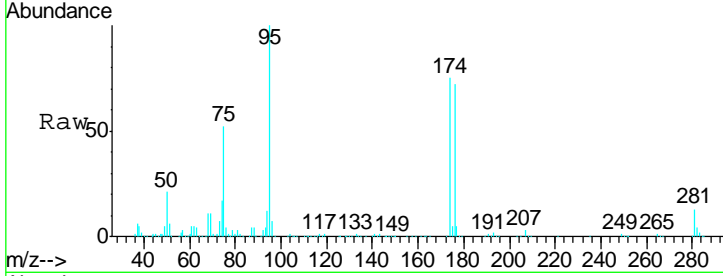




#76
 1,2,3-Trichloropropane
 Concen: 33.983 ug/l
 RT: 12.41 min Scan# 3307
 Delta R.T. -0.15 min
 Lab File: VN058644.D
 Acq: 9 Oct 2019 16:58

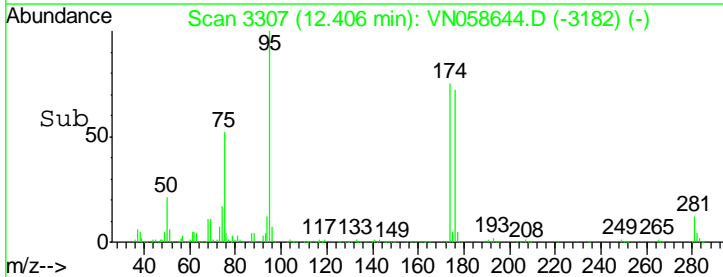
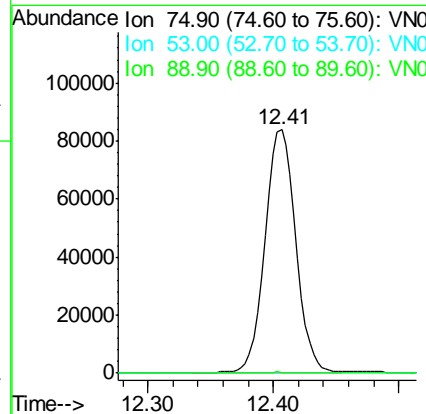
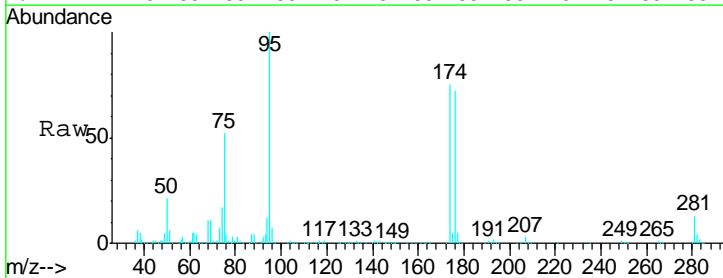
Instrument :
 MSVOA_N
 ClientSampled :
 TB-100219

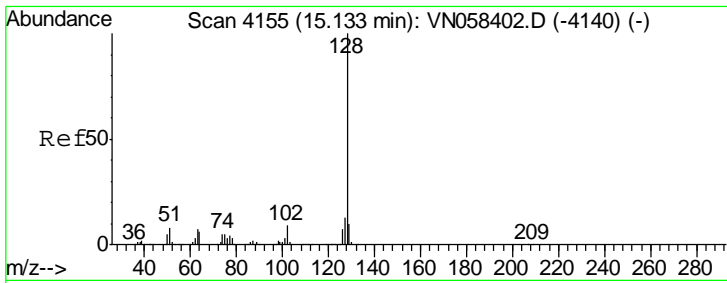
Tgt Ion: 75 Resp: 142181
 Ion Ratio Lower Upper
 75 100
 77 1.6 0.0 0.0#



#81
 trans-1,4-Dichloro-2-butene
 Concen: 103.211 ug/l
 RT: 12.41 min Scan# 3307
 Delta R.T. 0.10 min
 Lab File: VN058644.D
 Acq: 9 Oct 2019 16:58

Tgt Ion: 75 Resp: 142181
 Ion Ratio Lower Upper
 75 100
 53 0.0 85.4 128.0#
 89 0.2 35.0 52.4#





#95
 Naphthalene
 Concen: 0.213 ug/l
 RT: 15.14 min Scan# 4156
 Delta R.T. 0.00 min
 Lab File: VN058644.D
 Acq: 9 Oct 2019 16:58

Instrument : MSVOA_N
 ClientSampled : TB-100219

Tgt Ion	Resp	Lower	Upper
128	100		
127	11.1	10.2	15.4
129	6.7	8.3	12.5#

