

Data Path : Z:\voasrv\HPCHEM1\MSVOA_N\Data\VN101022\
 Data File : VN074838.D
 Acq On : 10 Oct 2022 17:49
 Operator : JC\MD
 Sample : PB148097ZHE#06
 Misc : 5.0mL/MSVOA_N/WATER
 ALS Vial : 15 Sample Multiplier: 1

Instrument :
 MSVOA_N
 ClientSampleId :

Quant Time: Oct 11 06:27:40 2022
 Quant Method : Z:\voasrv\HPCHEM1\MSVOA_N\methods\82N100522W.M
 Quant Title : SW846 8260
 QLast Update : Thu Oct 06 05:37:50 2022
 Response via : Initial Calibration

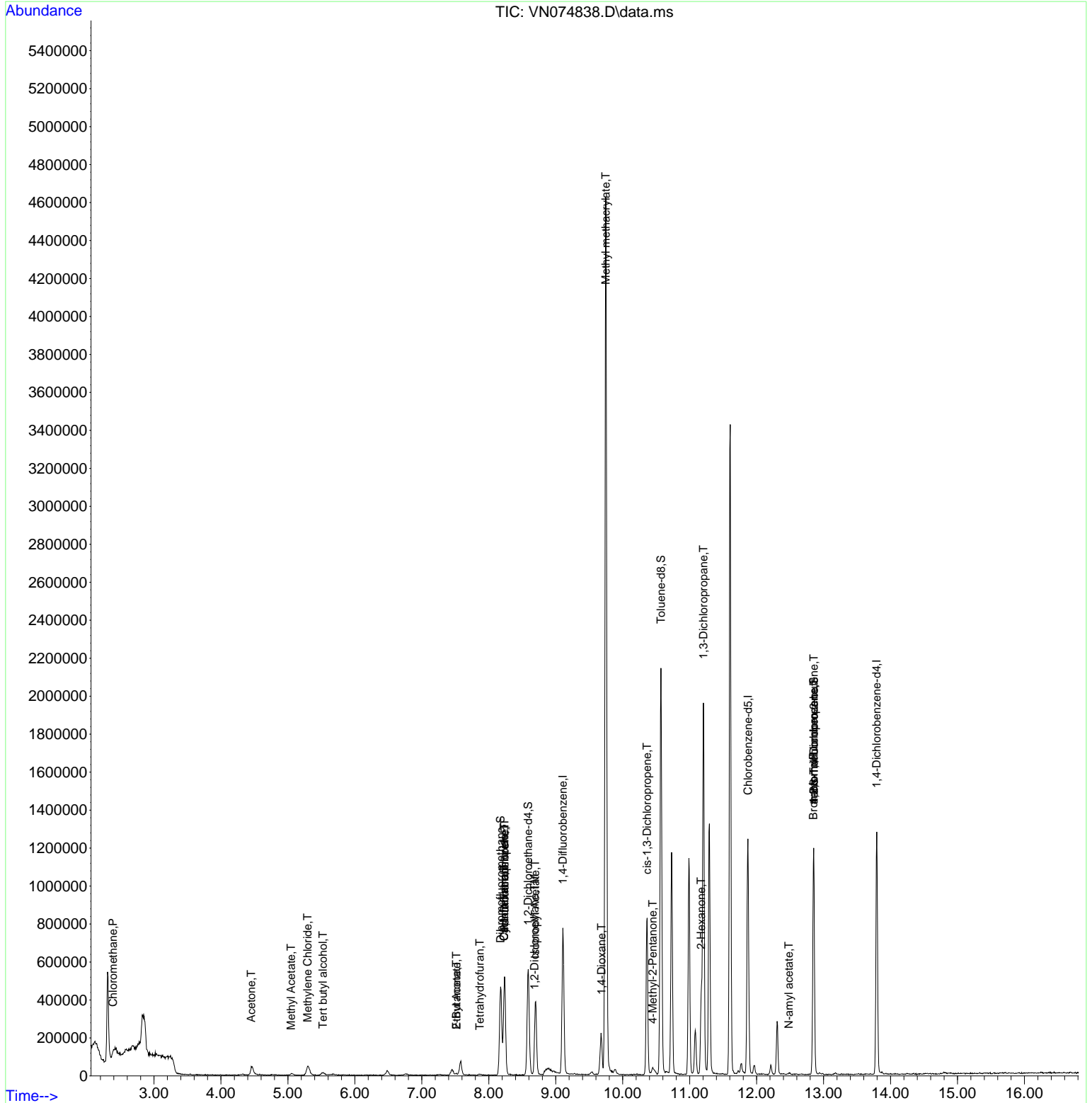
Compound	R.T.	QIon	Response	Conc	Units	Dev(Min)
Internal Standards						
1) Pentafluorobenzene	8.236	168	361327	50.000	ug/l	0.00
34) 1,4-Difluorobenzene	9.106	114	637872	50.000	ug/l	0.00
63) Chlorobenzene-d5	11.871	117	695495	50.000	ug/l	0.00
72) 1,4-Dichlorobenzene-d4	13.794	152	319333	50.000	ug/l	0.00
System Monitoring Compounds						
33) 1,2-Dichloroethane-d4	8.589	65	410437	47.941	ug/l	0.00
Spiked Amount	50.000	Range 74 - 125	Recovery =	95.880%		
35) Dibromofluoromethane	8.177	113	333372	51.727	ug/l	0.00
Spiked Amount	50.000	Range 75 - 124	Recovery =	103.460%		
50) Toluene-d8	10.571	98	1415970	51.203	ug/l	0.00
Spiked Amount	50.000	Range 86 - 113	Recovery =	102.400%		
62) 4-Bromofluorobenzene	12.853	95	357723	42.554	ug/l	0.00
Spiked Amount	50.000	Range 83 - 123	Recovery =	85.100%		
Target Compounds						
						Qvalue
3) Chloromethane	2.389	50	3670	0.333	ug/l #	53
11) Tert butyl alcohol	5.524	59	11235	3.918	ug/l #	84
13) Acrolein	4.218	56	77	Below Cal	#	1
16) Acetone	4.453	43	85181	17.557	ug/l	94
18) Methyl Acetate	5.048	43	6342	0.353	ug/l #	20
20) Methylene Chloride	5.295	84	38088	2.840	ug/l #	90
25) 2-Butanone	7.518	43	12164	1.381	ug/l	96
29) Tetrahydrofuran	7.865	42	3048	0.497	ug/l #	79
31) Cyclohexane	8.230	56	11274	0.762	ug/l #	56
36) 1,1-Dichloropropene	8.236	75	35724	3.425	ug/l #	49
37) Ethyl Acetate	7.518	43	12164	0.291	ug/l #	86
38) Carbon Tetrachloride	8.230	117	37720	3.834	ug/l #	19
42) 1,2-Dichloroethane	8.683	62	2890	0.273	ug/l	88
43) Isopropyl Acetate	8.694	43	461858	17.862	ug/l #	90
48) Methyl methacrylate	9.747	41	410861	38.703	ug/l #	82
49) 1,4-Dioxane	9.683	88	79	0.343	ug/l #	1
51) 4-Methyl-2-Pentanone	10.447	43	38952	2.339	ug/l #	72
54) cis-1,3-Dichloropropene	10.365	75	147920	10.490	ug/l #	66
57) 1,3-Dichloropropane	11.206	76	19317	1.314	ug/l #	42
59) 2-Hexanone	11.171	43	349679	27.764	ug/l #	24
71) Bromoform	12.847	173	3947	0.665	ug/l #	1
74) N-amyl acetate	12.482	43	4410	0.237	ug/l #	51
75) 1,1,2,2-Tetrachloroethane	12.894	83	89	Below Cal	#	24
76) 1,2,3-Trichloropropane	12.853	75	213157	22.364	ug/l #	1
77) Bromobenzene	12.718	156	57	Below Cal	#	67
81) trans-1,4-Dichloro-2-b...	12.853	75	213157	43.573	ug/l #	14

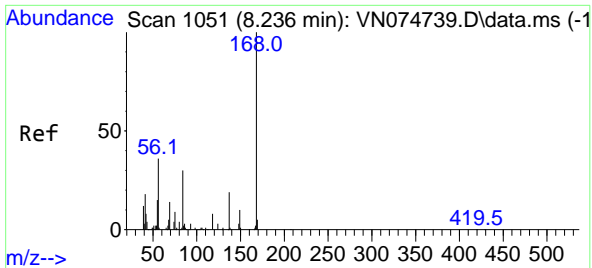
(#) = qualifier out of range (m) = manual integration (+) = signals summed

Data Path : Z:\voasrv\HPCHEM1\MSVOA_N\Data\VN101022\
 Data File : VN074838.D
 Acq On : 10 Oct 2022 17:49
 Operator : JC\MD
 Sample : PB148097ZHE#06
 Misc : 5.0mL/MSVOA_N/WATER
 ALS Vial : 15 Sample Multiplier: 1

Instrument :
 MSVOA_N
 ClientSampleId :

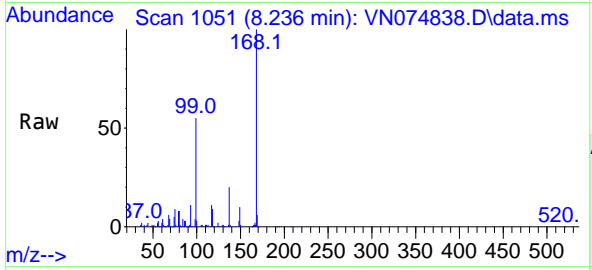
Quant Time: Oct 11 06:27:40 2022
 Quant Method : Z:\voasrv\HPCHEM1\MSVOA_N\methods\82N100522W.M
 Quant Title : SW846 8260
 QLast Update : Thu Oct 06 05:37:50 2022
 Response via : Initial Calibration



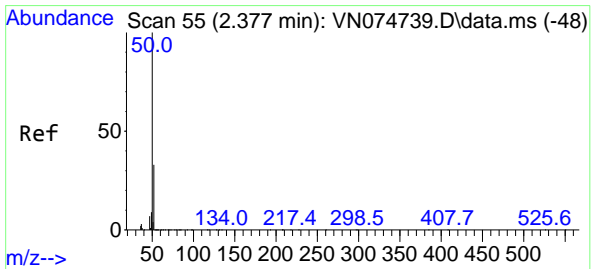
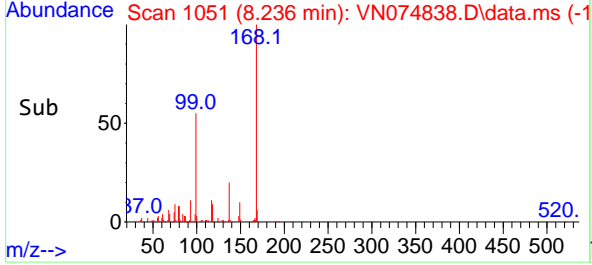
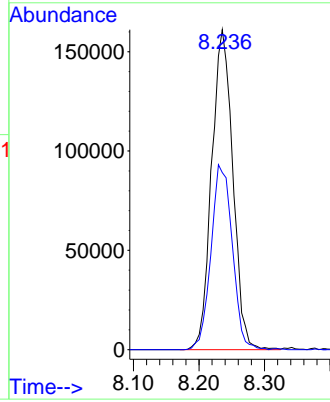


#1
 Pentafluorobenzene
 Concen: 50.000 ug/l
 RT: 8.236 min Scan# 10
 Delta R.T. -0.000 min
 Lab File: VN074838.D
 Acq: 10 Oct 2022 17:49

Instrument : MSVOA_N
 ClientSampleId :

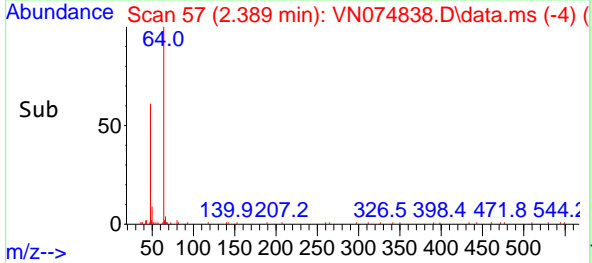
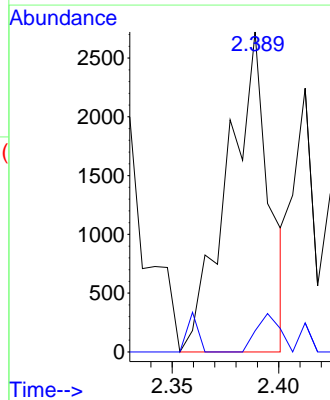
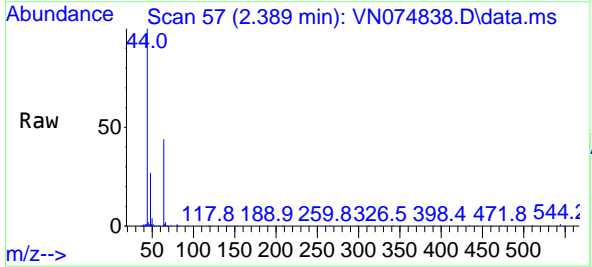


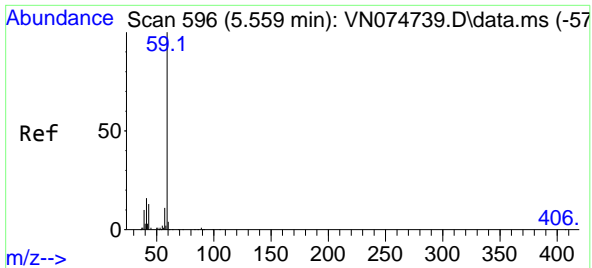
Tgt Ion:168 Resp: 361327
 Ion Ratio Lower Upper
 168 100
 99 55.4 42.8 64.2



#3
 Chloromethane
 Concen: 0.333 ug/l
 RT: 2.389 min Scan# 57
 Delta R.T. 0.012 min
 Lab File: VN074838.D
 Acq: 10 Oct 2022 17:49

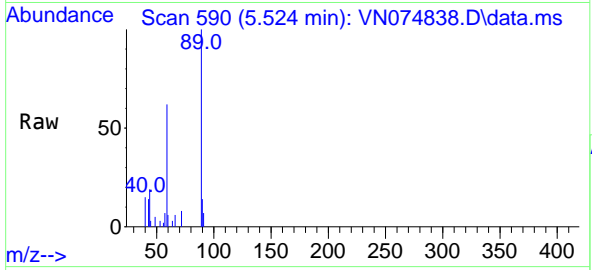
Tgt Ion: 50 Resp: 3670
 Ion Ratio Lower Upper
 50 100
 52 6.6 26.7 40.1#



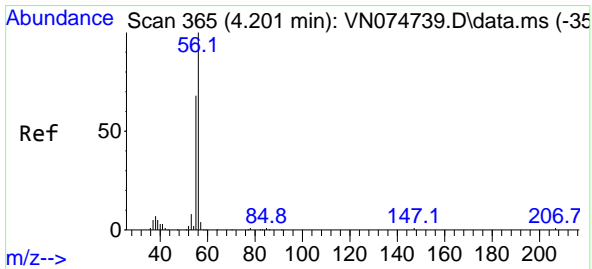
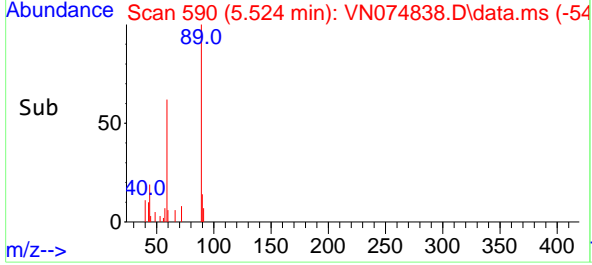
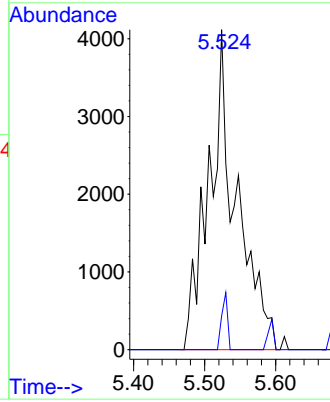


#11
 Tert butyl alcohol
 Concen: 3.918 ug/l
 RT: 5.524 min Scan# 59
 Delta R.T. -0.035 min
 Lab File: VN074838.D
 Acq: 10 Oct 2022 17:49

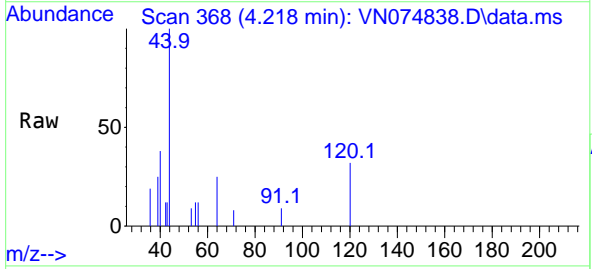
Instrument : MSVOA_N
 ClientSampleId :



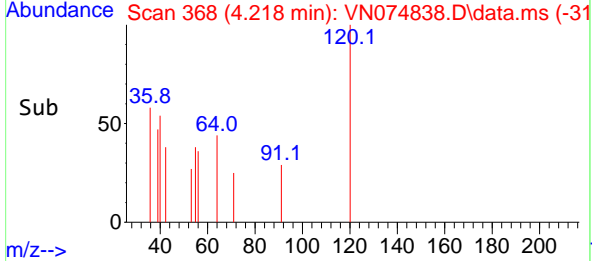
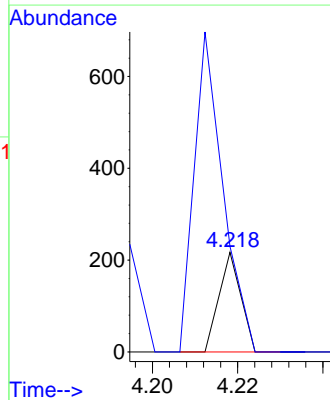
Tgt Ion: 59 Resp: 11235
 Ion Ratio Lower Upper
 59 100
 57 3.7 7.7 11.5#

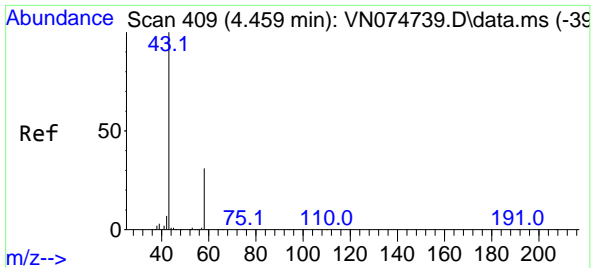


#13
 Acrolein
 Concen: Below Cal
 RT: 4.218 min Scan# 368
 Delta R.T. 0.017 min
 Lab File: VN074838.D
 Acq: 10 Oct 2022 17:49



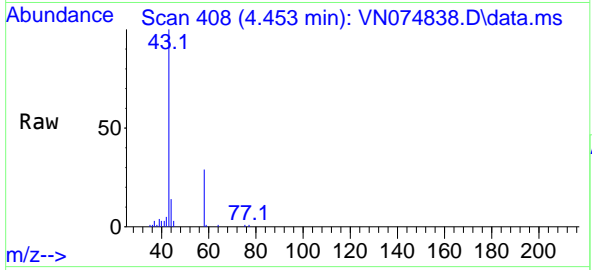
Tgt Ion: 56 Resp: 77
 Ion Ratio Lower Upper
 56 100
 55 532.5 54.9 82.3#



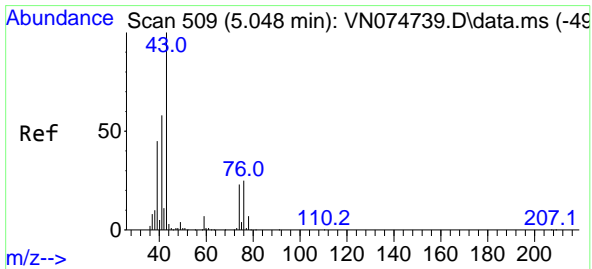
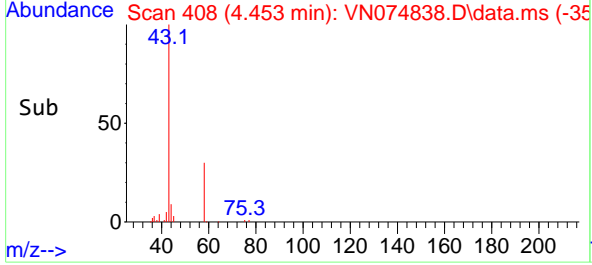
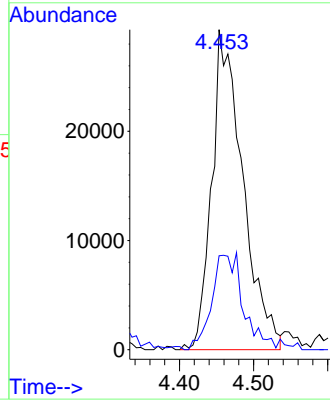


#16
 Acetone
 Concen: 17.557 ug/l
 RT: 4.453 min Scan# 408
 Delta R.T. -0.006 min
 Lab File: VN074838.D
 Acq: 10 Oct 2022 17:49

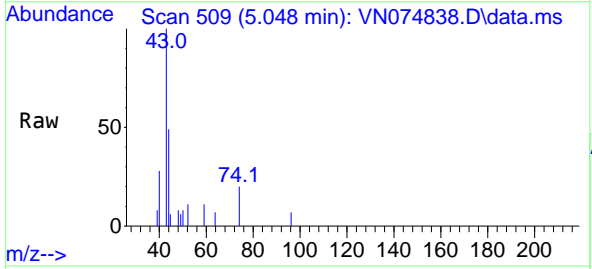
Instrument :
 MSVOA_N
 ClientSampleId :



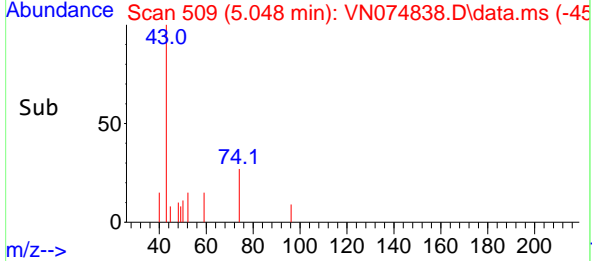
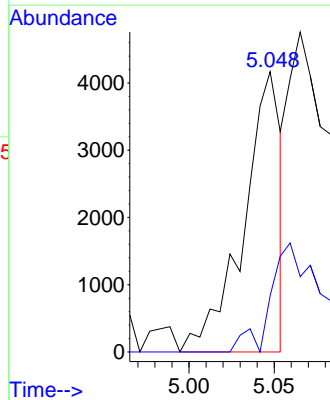
Tgt Ion: 43 Resp: 85181
 Ion Ratio Lower Upper
 43 100
 58 27.9 24.9 37.3

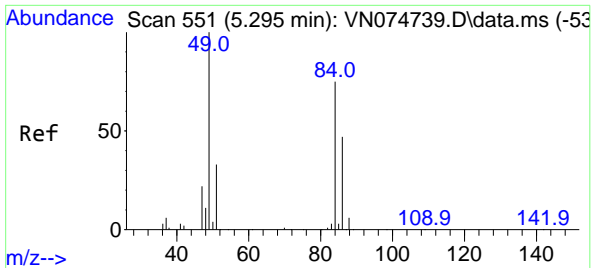


#18
 Methyl Acetate
 Concen: 0.353 ug/l
 RT: 5.048 min Scan# 509
 Delta R.T. -0.000 min
 Lab File: VN074838.D
 Acq: 10 Oct 2022 17:49



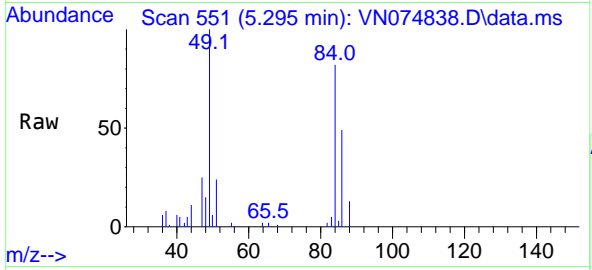
Tgt Ion: 43 Resp: 6342
 Ion Ratio Lower Upper
 43 100
 74 61.8 18.5 27.7#





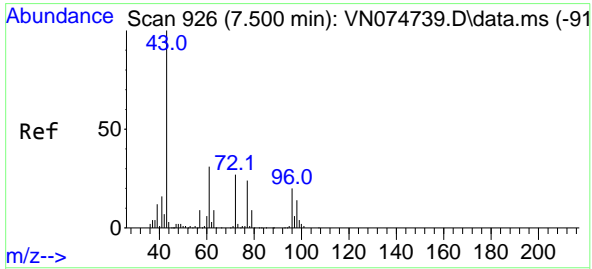
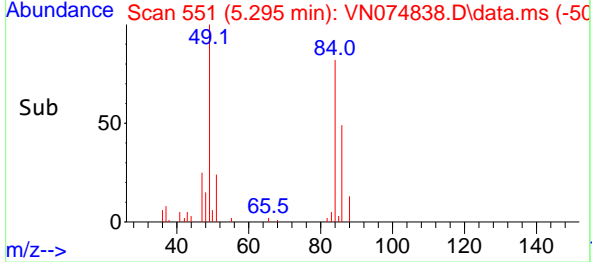
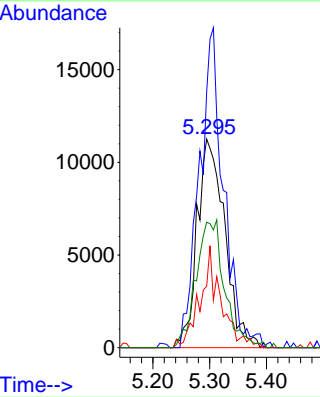
#20
 Methylene Chloride
 Concen: 2.840 ug/l
 RT: 5.295 min Scan# 51
 Delta R.T. -0.000 min
 Lab File: VN074838.D
 Acq: 10 Oct 2022 17:49

Instrument :
 MSVOA_N
 ClientSampleId :



Tgt Ion: 84 Resp: 38088

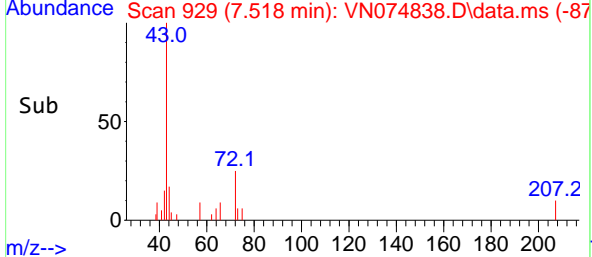
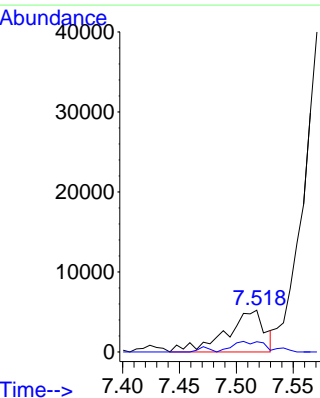
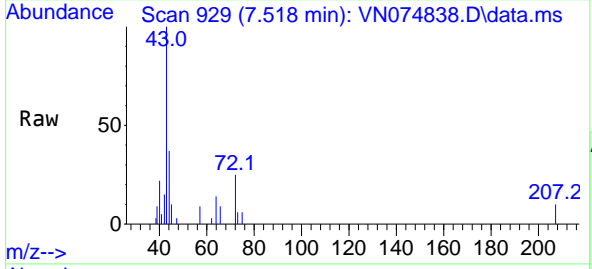
Ion	Ratio	Lower	Upper
84	100		
49	122.6	107.4	161.0
51	29.5	35.1	52.7#
86	60.1	50.4	75.6

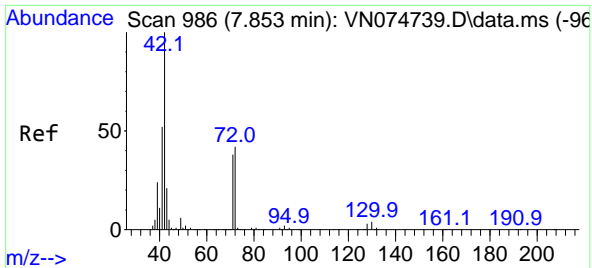


#25
 2-Butanone
 Concen: 1.381 ug/l
 RT: 7.518 min Scan# 929
 Delta R.T. 0.018 min
 Lab File: VN074838.D
 Acq: 10 Oct 2022 17:49

Tgt Ion: 43 Resp: 12164

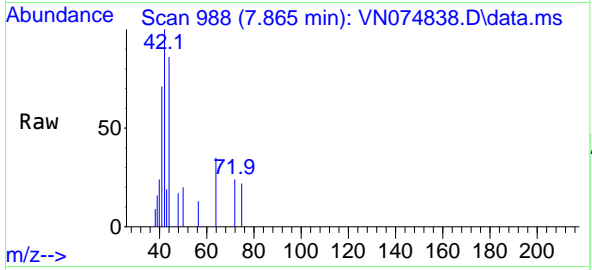
Ion	Ratio	Lower	Upper
43	100		
72	24.6	21.4	32.0





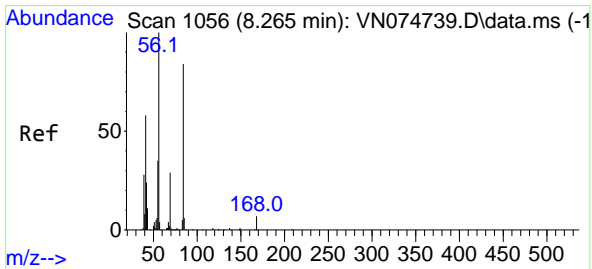
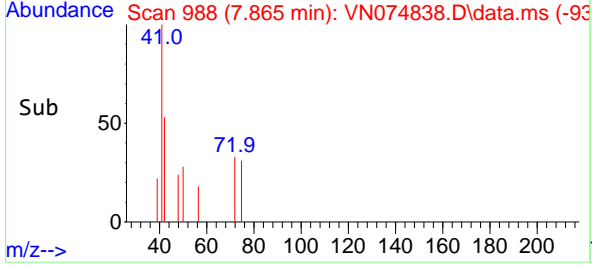
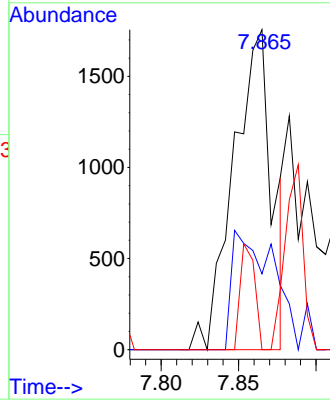
#29
 Tetrahydrofuran
 Concen: 0.497 ug/l
 RT: 7.865 min Scan# 91
 Delta R.T. 0.012 min
 Lab File: VN074838.D
 Acq: 10 Oct 2022 17:49

Instrument :
 MSVOA_N
 ClientSampleId :



Tgt Ion: 42 Resp: 3048

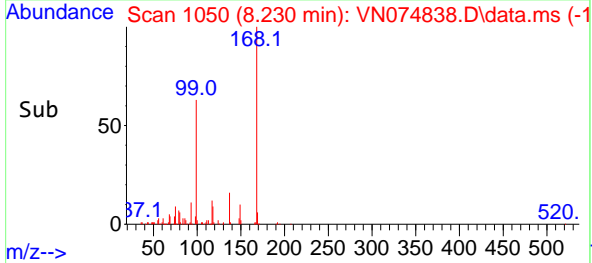
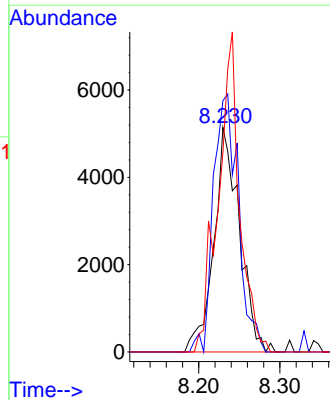
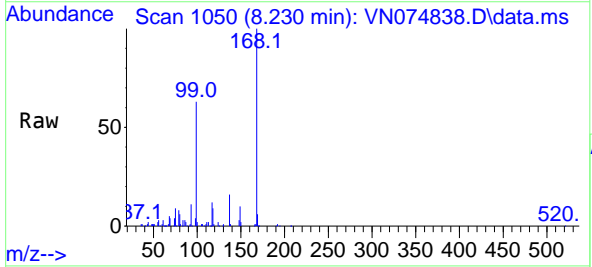
Ion	Ratio	Lower	Upper
42	100		
72	42.1	33.0	49.6
71	12.4	30.4	45.6#

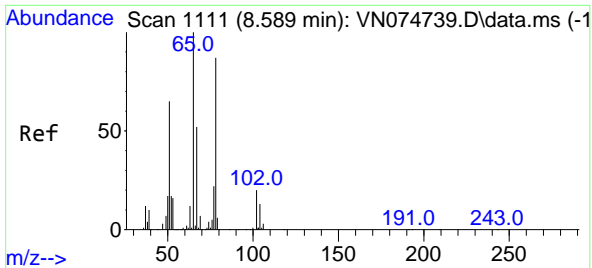


#31
 Cyclohexane
 Concen: 0.762 ug/l
 RT: 8.230 min Scan# 1050
 Delta R.T. -0.035 min
 Lab File: VN074838.D
 Acq: 10 Oct 2022 17:49

Tgt Ion: 56 Resp: 11274

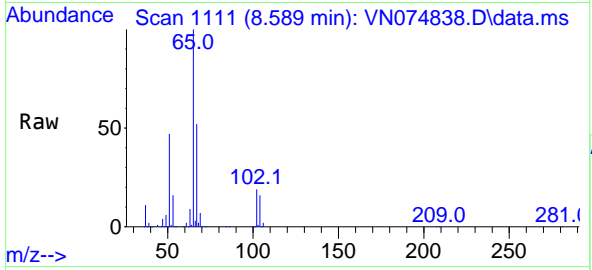
Ion	Ratio	Lower	Upper
56	100		
69	111.9	23.1	34.7#
84	88.8	67.1	100.7



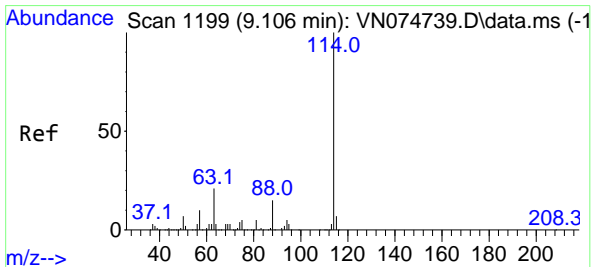
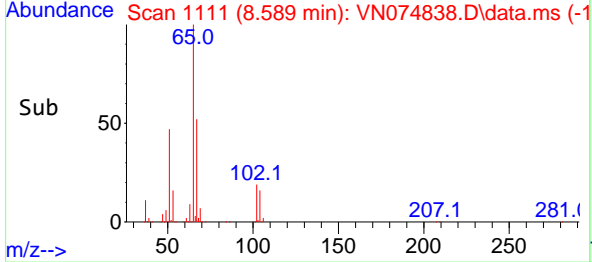
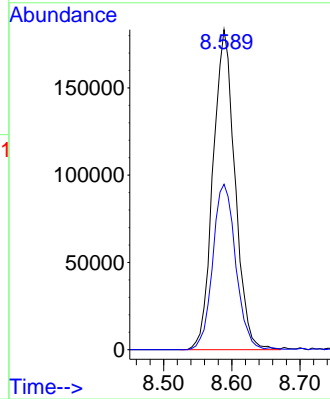


#33
 1,2-Dichloroethane-d4
 Concen: 47.941 ug/l
 RT: 8.589 min Scan# 1111
 Delta R.T. -0.000 min
 Lab File: VN074838.D
 Acq: 10 Oct 2022 17:49

Instrument : MSVOA_N
 ClientSampleId :

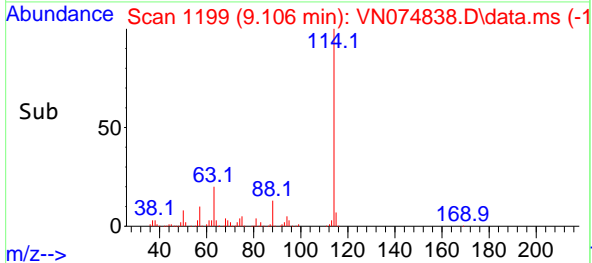
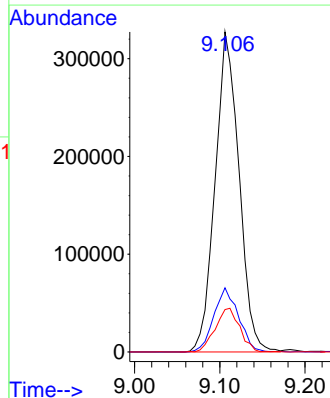
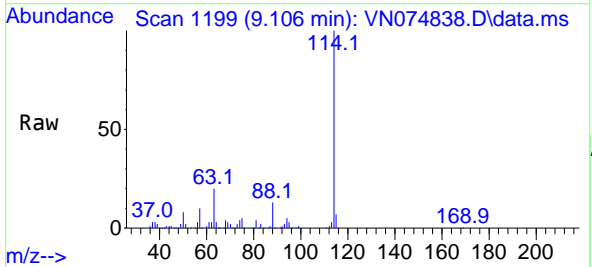


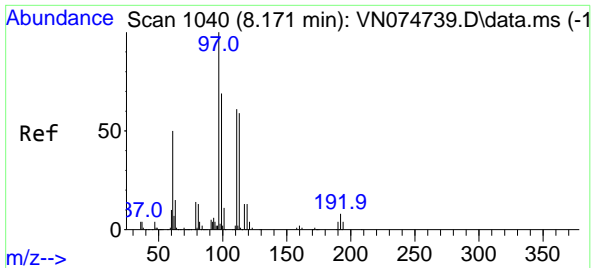
Tgt Ion: 65 Resp: 410437
 Ion Ratio Lower Upper
 65 100
 67 54.3 0.0 109.0



#34
 1,4-Difluorobenzene
 Concen: 50.000 ug/l
 RT: 9.106 min Scan# 1199
 Delta R.T. -0.000 min
 Lab File: VN074838.D
 Acq: 10 Oct 2022 17:49

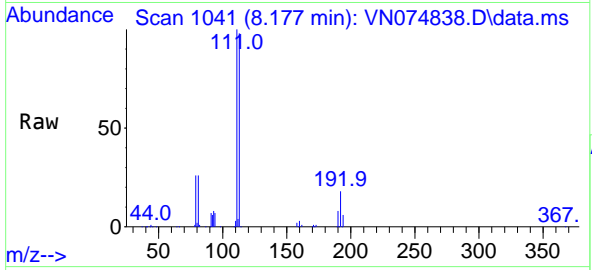
Tgt Ion: 114 Resp: 637872
 Ion Ratio Lower Upper
 114 100
 63 20.0 0.0 41.2
 88 13.3 0.0 30.2



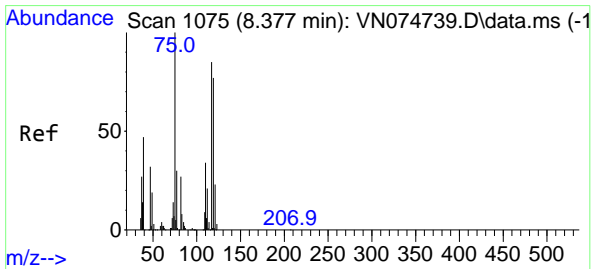
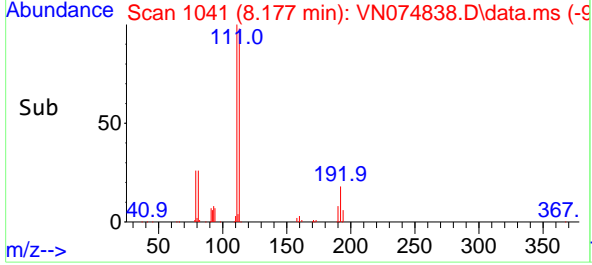
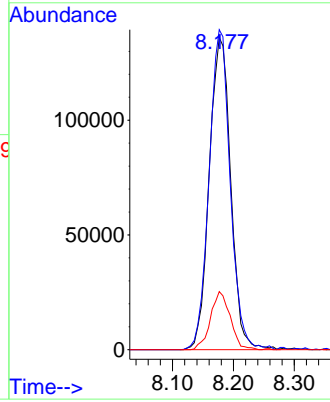


#35
 Dibromofluoromethane
 Concen: 51.727 ug/l
 RT: 8.177 min Scan# 1041
 Delta R.T. 0.006 min
 Lab File: VN074838.D
 Acq: 10 Oct 2022 17:49

Instrument : MSVOA_N
 ClientSampleId :

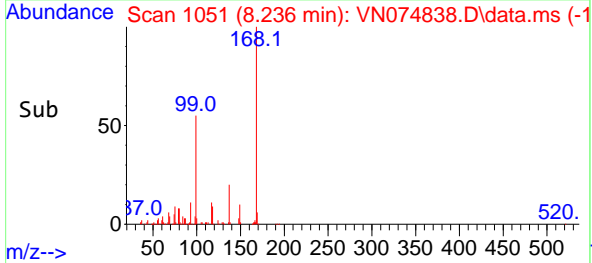
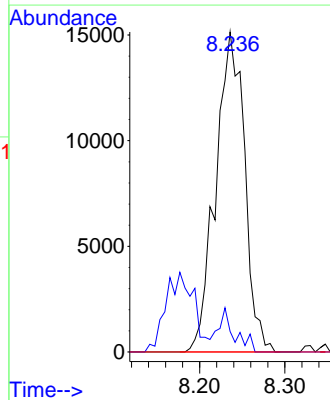
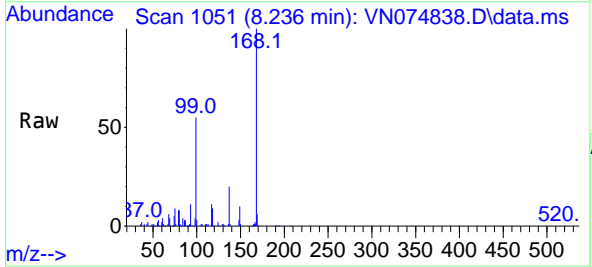


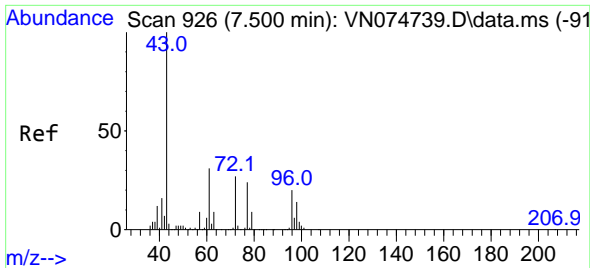
Tgt Ion:113 Resp: 333372
 Ion Ratio Lower Upper
 113 100
 111 101.0 83.0 124.6
 192 17.1 12.6 18.8



#36
 1,1-Dichloropropene
 Concen: 3.425 ug/l
 RT: 8.236 min Scan# 1051
 Delta R.T. -0.141 min
 Lab File: VN074838.D
 Acq: 10 Oct 2022 17:49

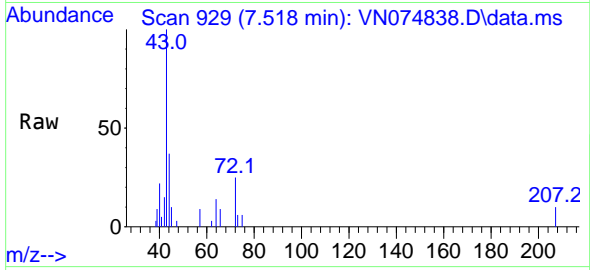
Tgt Ion: 75 Resp: 35724
 Ion Ratio Lower Upper
 75 100
 110 7.6 17.2 51.5#
 77 0.0 24.3 36.5#



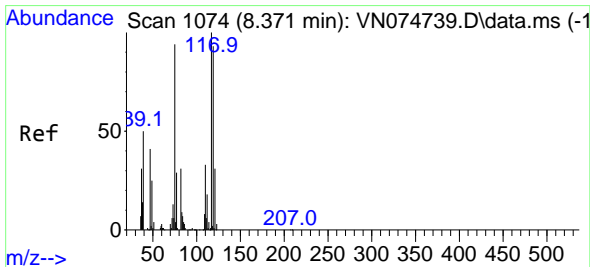
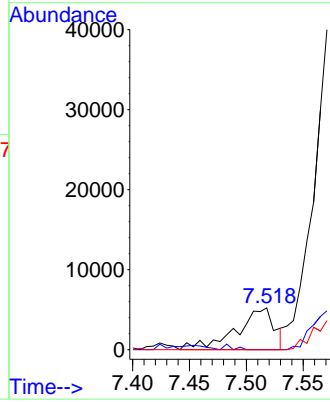
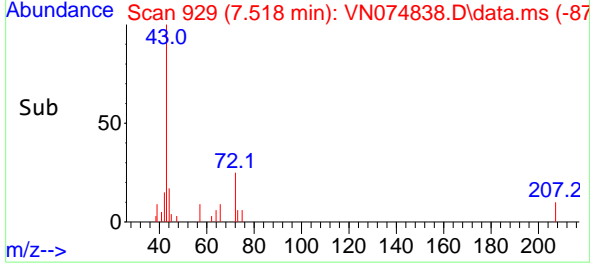


#37
Ethyl Acetate
Concen: 0.291 ug/l
RT: 7.518 min Scan# 91
Delta R.T. 0.018 min
Lab File: VN074838.D
Acq: 10 Oct 2022 17:49

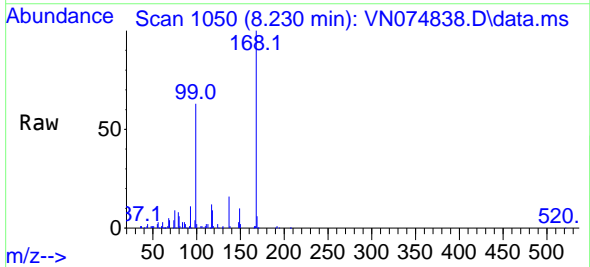
Instrument :
MSVOA_N
ClientSampleId :



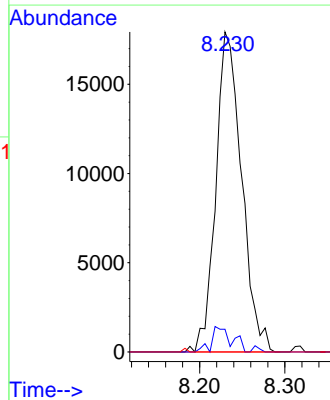
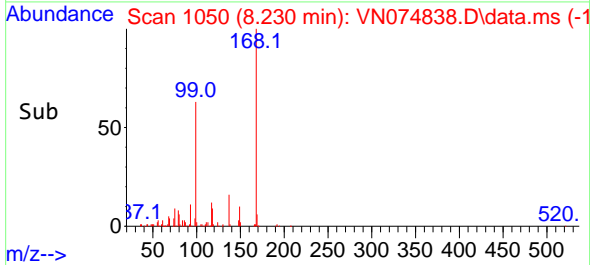
Tgt Ion: 43 Resp: 12164
Ion Ratio Lower Upper
43 100
61 0.0 4.3 6.5#
70 0.0 3.0 4.4#

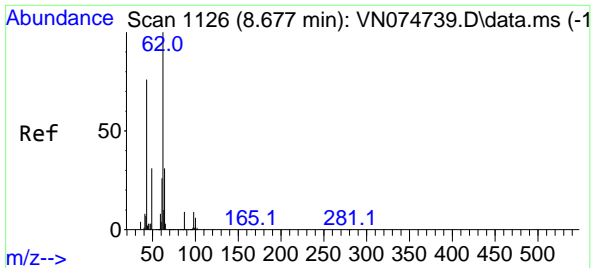


#38
Carbon Tetrachloride
Concen: 3.834 ug/l
RT: 8.230 min Scan# 1050
Delta R.T. -0.141 min
Lab File: VN074838.D
Acq: 10 Oct 2022 17:49



Tgt Ion: 117 Resp: 37720
Ion Ratio Lower Upper
117 100
119 7.1 74.3 111.5#
121 0.0 25.0 37.4#

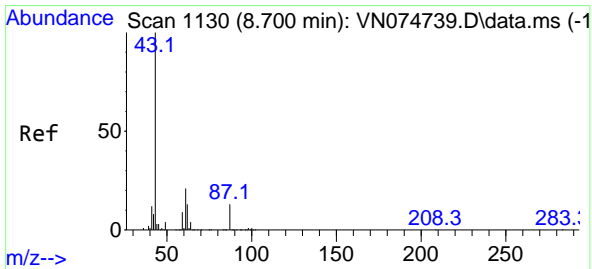
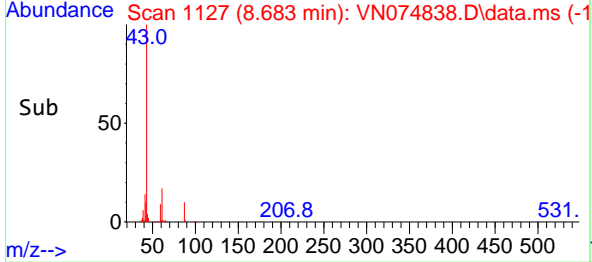
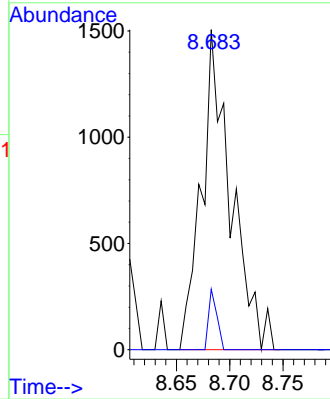
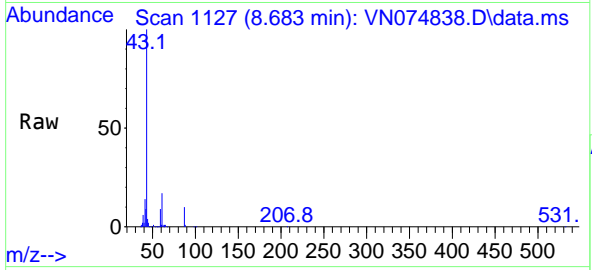




#42
 1,2-Dichloroethane
 Concen: 0.273 ug/l
 RT: 8.683 min Scan# 1127
 Delta R.T. 0.006 min
 Lab File: VN074838.D
 Acq: 10 Oct 2022 17:49

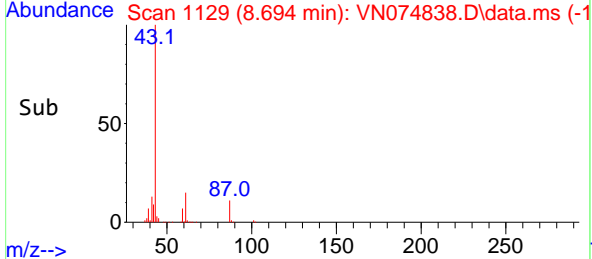
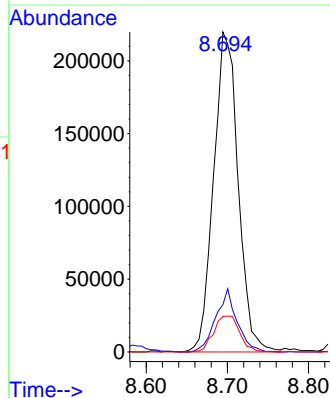
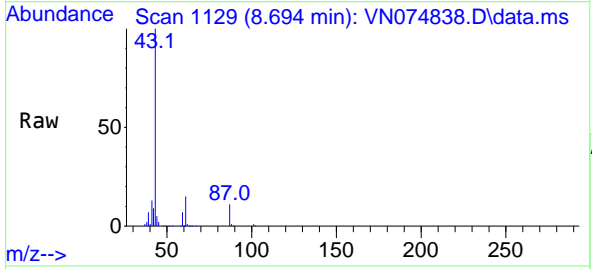
Instrument :
 MSVOA_N
 ClientSampleId :

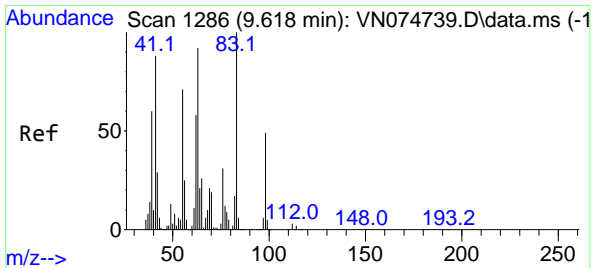
Tgt Ion: 62 Resp: 2890
 Ion Ratio Lower Upper
 62 100
 98 5.3 0.0 19.4



#43
 Isopropyl Acetate
 Concen: 17.862 ug/l
 RT: 8.694 min Scan# 1129
 Delta R.T. -0.006 min
 Lab File: VN074838.D
 Acq: 10 Oct 2022 17:49

Tgt Ion: 43 Resp: 461858
 Ion Ratio Lower Upper
 43 100
 61 17.0 19.4 29.0#
 87 11.9 10.1 15.1

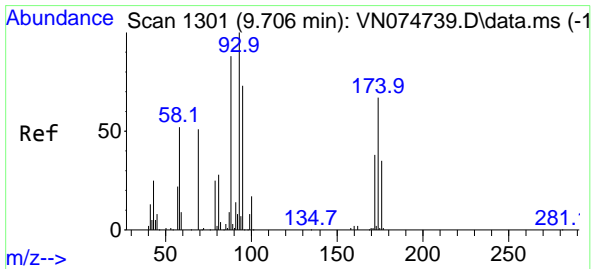
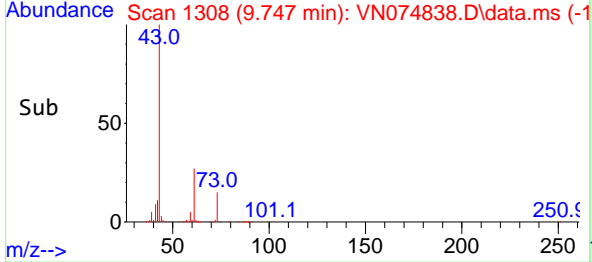
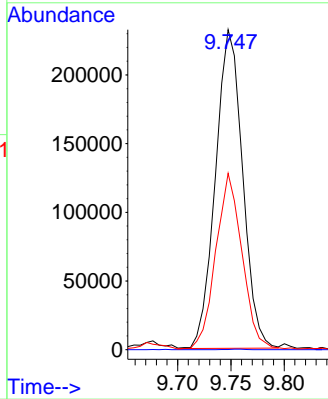
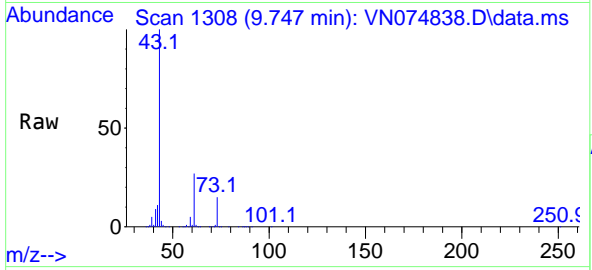




#48
 Methyl methacrylate
 Concen: 38.703 ug/l
 RT: 9.747 min Scan# 11
 Delta R.T. 0.129 min
 Lab File: VN074838.D
 Acq: 10 Oct 2022 17:49

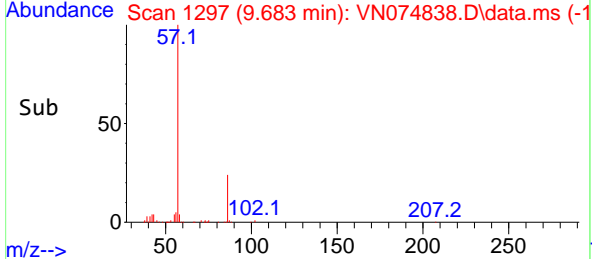
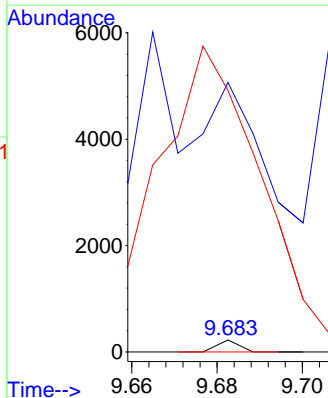
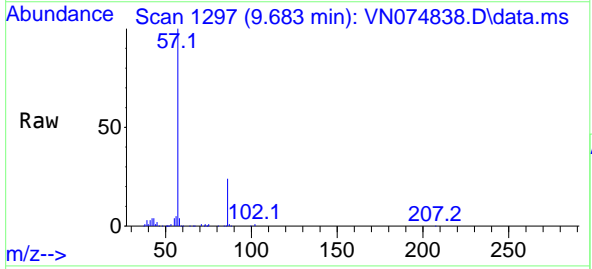
Instrument :
 MSVOA_N
 ClientSampleId :

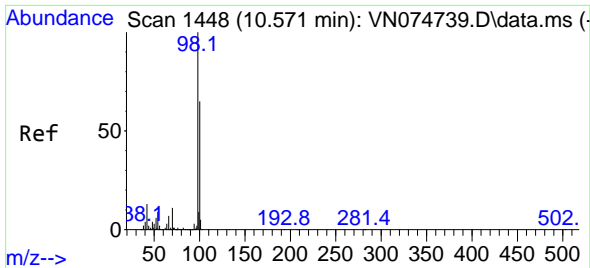
Tgt Ion: 41 Resp: 410861
 Ion Ratio Lower Upper
 41 100
 69 0.1 0.0 0.0#
 39 53.5 54.4 81.6#



#49
 1,4-Dioxane
 Concen: 0.343 ug/l
 RT: 9.683 min Scan# 1297
 Delta R.T. -0.024 min
 Lab File: VN074838.D
 Acq: 10 Oct 2022 17:49

Tgt Ion: 88 Resp: 79
 Ion Ratio Lower Upper
 88 100
 43 0.0 23.4 35.2#
 58 13326.6 54.9 82.3#

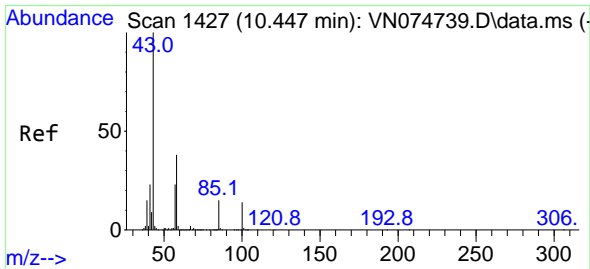
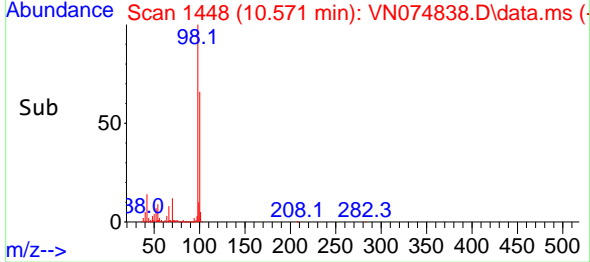
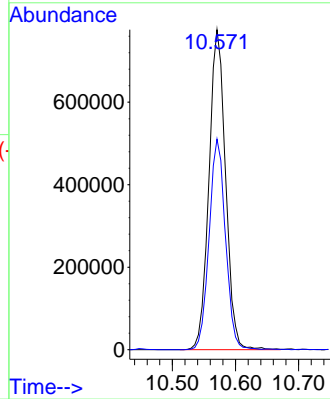
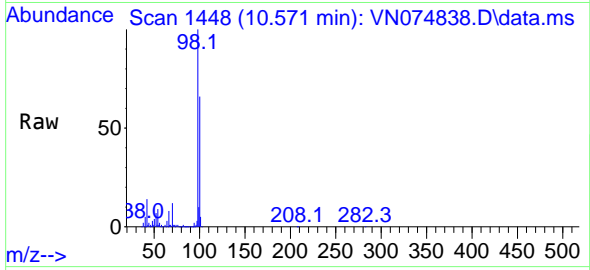




#50
 Toluene-d8
 Concen: 51.203 ug/l
 RT: 10.571 min Scan# 1448
 Delta R.T. -0.000 min
 Lab File: VN074838.D
 Acq: 10 Oct 2022 17:49

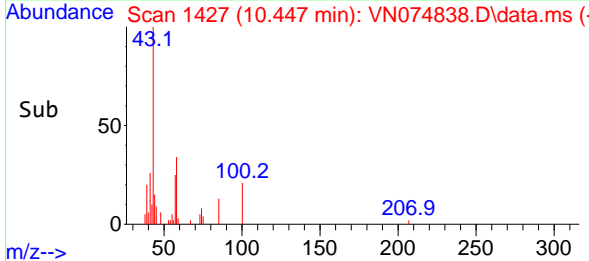
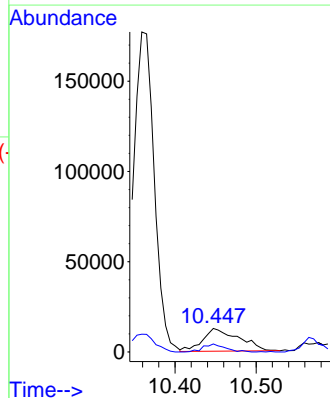
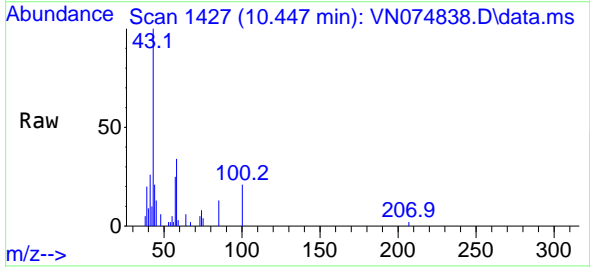
Instrument :
 MSVOA_N
 ClientSampleId :

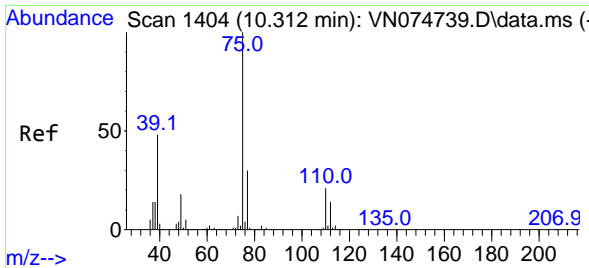
Tgt Ion: 98 Resp: 1415970
 Ion Ratio Lower Upper
 98 100
 100 64.7 50.7 76.1



#51
 4-Methyl-2-Pentanone
 Concen: 2.339 ug/l
 RT: 10.447 min Scan# 1427
 Delta R.T. -0.000 min
 Lab File: VN074838.D
 Acq: 10 Oct 2022 17:49

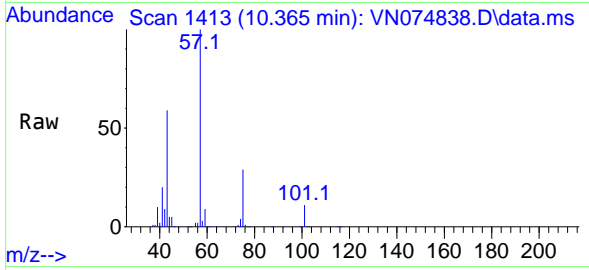
Tgt Ion: 43 Resp: 38952
 Ion Ratio Lower Upper
 43 100
 58 21.2 30.6 45.8#



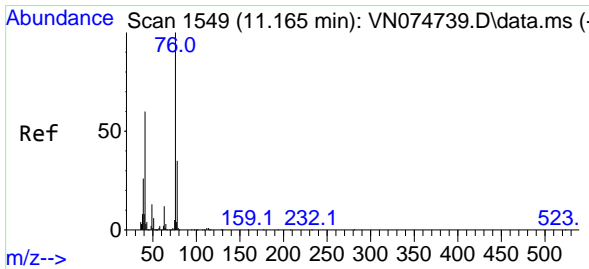
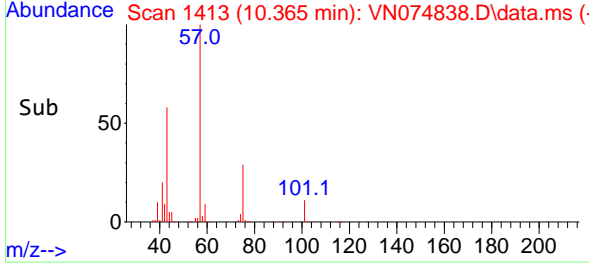
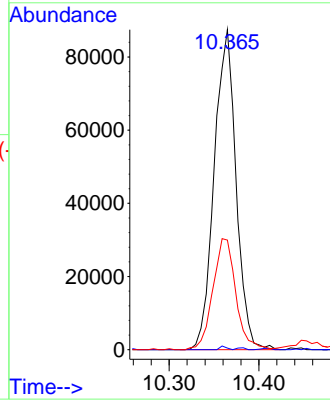


#54
 cis-1,3-Dichloropropene
 Concen: 10.490 ug/l
 RT: 10.365 min Scan# 14
 Delta R.T. 0.053 min
 Lab File: VN074838.D
 Acq: 10 Oct 2022 17:49

Instrument :
 MSVOA_N
 ClientSampleId :

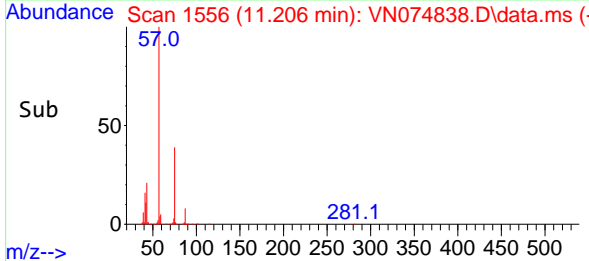
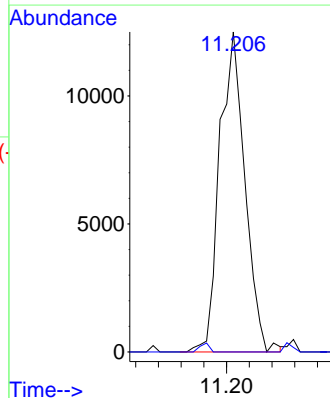
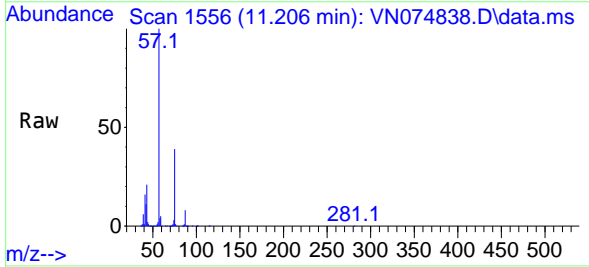


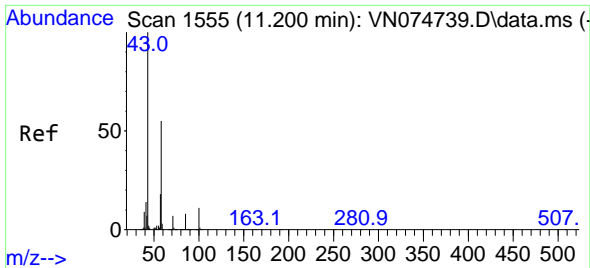
Tgt Ion: 75 Resp: 147920
 Ion Ratio Lower Upper
 75 100
 77 0.5 24.4 36.6#
 39 34.3 38.6 57.8#



#57
 1,3-Dichloropropane
 Concen: 1.314 ug/l
 RT: 11.206 min Scan# 1556
 Delta R.T. 0.041 min
 Lab File: VN074838.D
 Acq: 10 Oct 2022 17:49

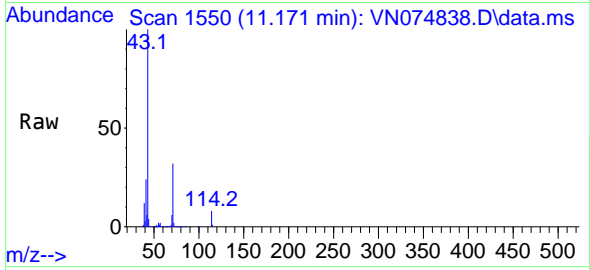
Tgt Ion: 76 Resp: 19317
 Ion Ratio Lower Upper
 76 100
 78 0.0 26.2 39.2#



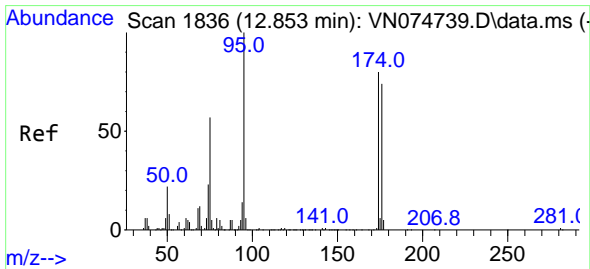
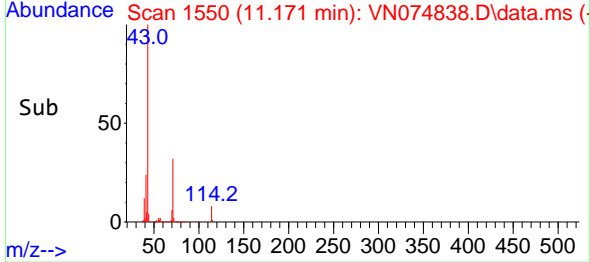
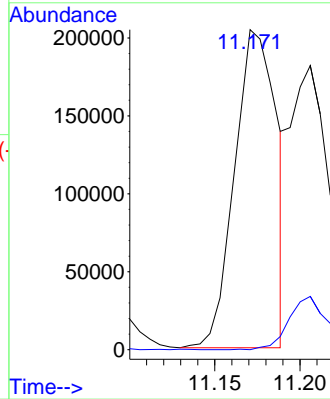


#59
 2-Hexanone
 Concen: 27.764 ug/l
 RT: 11.171 min Scan# 111
 Delta R.T. -0.029 min
 Lab File: VN074838.D
 Acq: 10 Oct 2022 17:49

Instrument : MSVOA_N
 ClientSampleId :

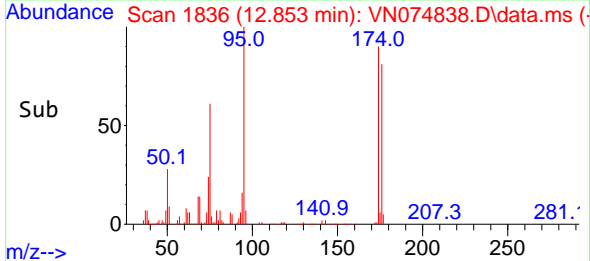
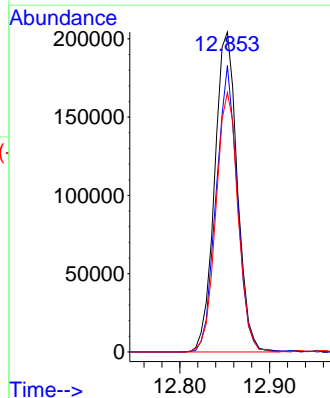
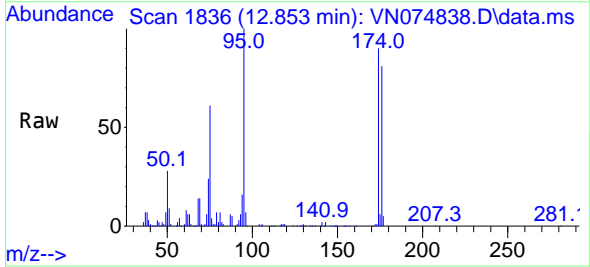


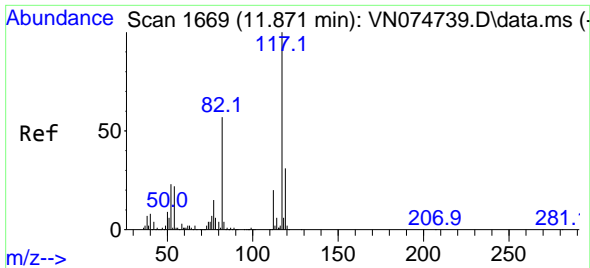
Tgt Ion: 43 Resp: 349679
 Ion Ratio Lower Upper
 43 100
 58 0.0 27.3 81.9#



#62
 4-Bromofluorobenzene
 Concen: 42.554 ug/l
 RT: 12.853 min Scan# 1836
 Delta R.T. -0.000 min
 Lab File: VN074838.D
 Acq: 10 Oct 2022 17:49

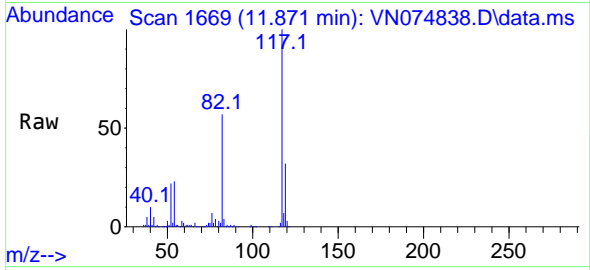
Tgt Ion: 95 Resp: 357723
 Ion Ratio Lower Upper
 95 100
 174 84.1 0.0 149.4
 176 79.3 0.0 142.0



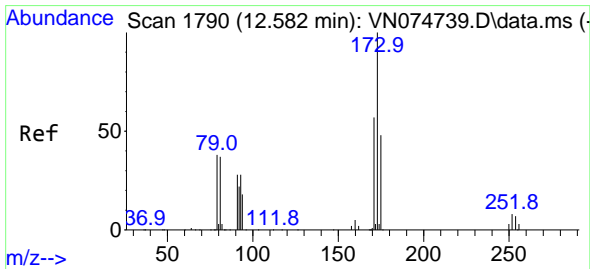
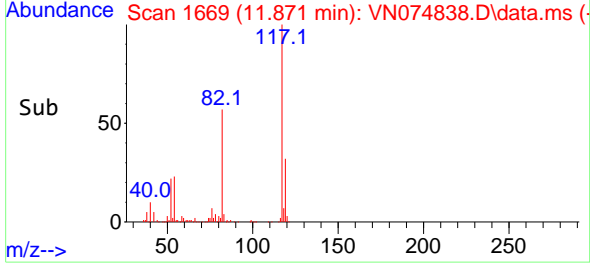
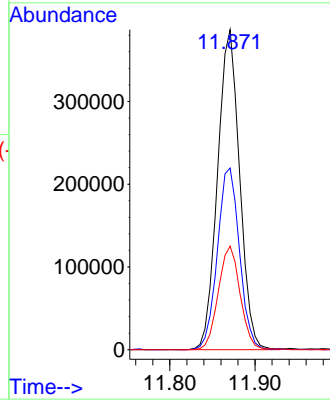


#63
 Chlorobenzene-d5
 Concen: 50.000 ug/l
 RT: 11.871 min Scan# 1
 Delta R.T. -0.000 min
 Lab File: VN074838.D
 Acq: 10 Oct 2022 17:49

Instrument :
 MSVOA_N
 ClientSampleId :

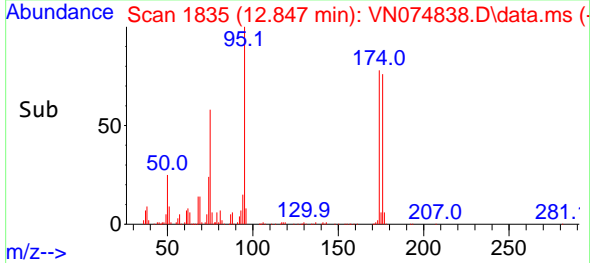
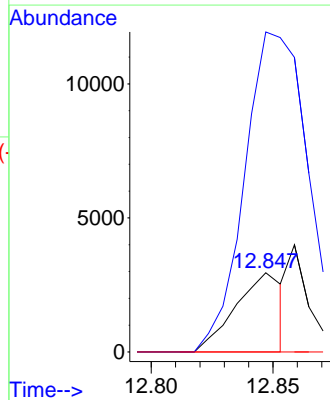
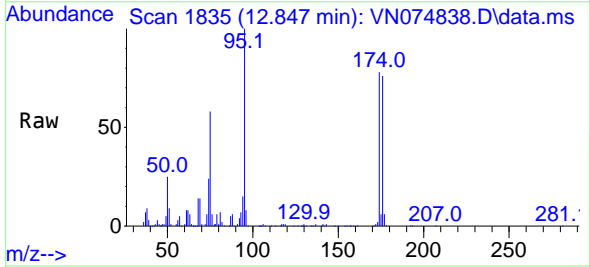


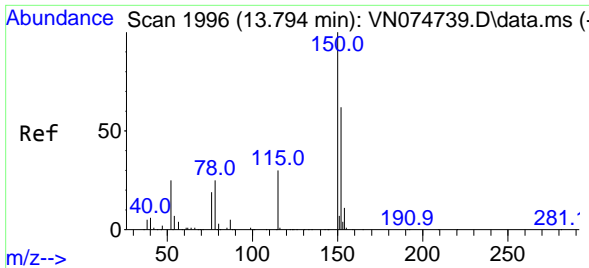
Tgt Ion:117 Resp: 695495
 Ion Ratio Lower Upper
 117 100
 82 56.7 45.4 68.2
 119 32.3 25.1 37.7



#71
 Bromoform
 Concen: 0.665 ug/l
 RT: 12.847 min Scan# 1835
 Delta R.T. 0.265 min
 Lab File: VN074838.D
 Acq: 10 Oct 2022 17:49

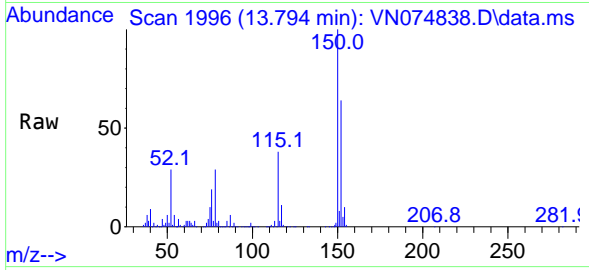
Tgt Ion:173 Resp: 3947
 Ion Ratio Lower Upper
 173 100
 175 448.3 23.9 71.7#
 254 0.0 0.1 0.1#



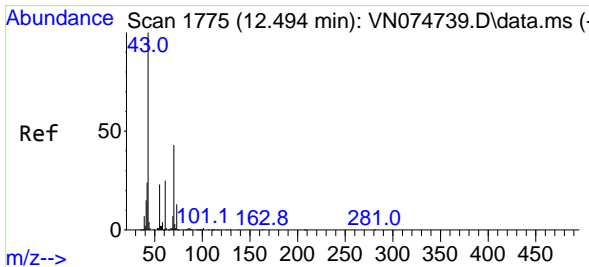
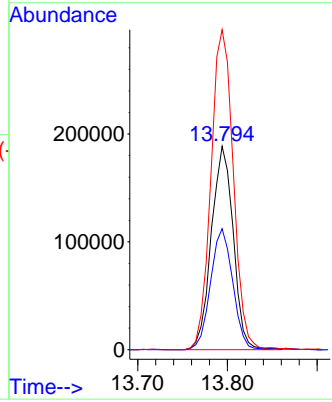
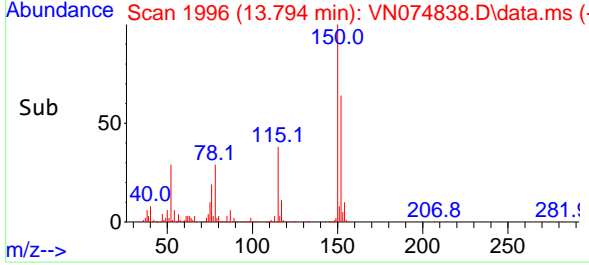


#72
 1,4-Dichlorobenzene-d4
 Concen: 50.000 ug/l
 RT: 13.794 min Scan# 1996
 Delta R.T. -0.000 min
 Lab File: VN074838.D
 Acq: 10 Oct 2022 17:49

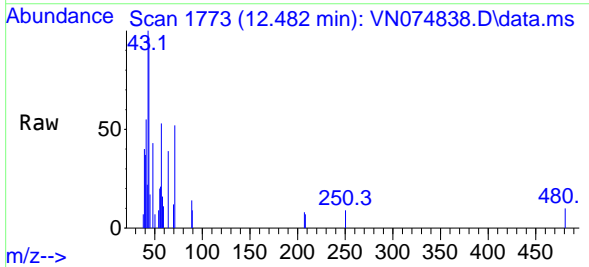
Instrument : MSVOA_N
 ClientSampleId :



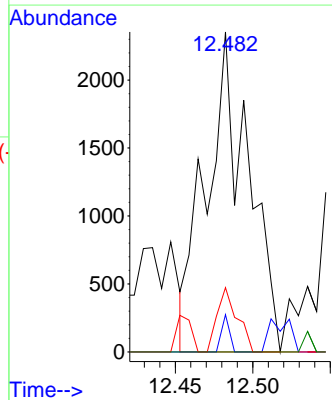
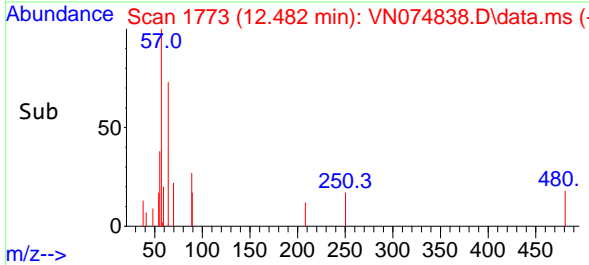
Tgt Ion:152 Resp: 319333
 Ion Ratio Lower Upper
 152 100
 115 60.1 30.0 90.0
 150 161.1 0.0 356.4

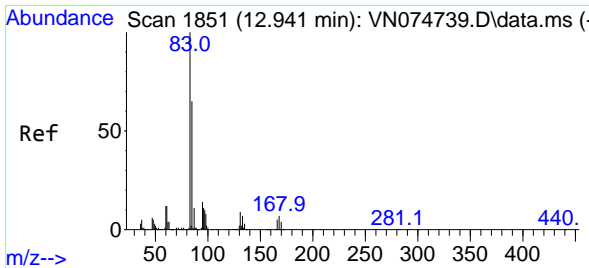


#74
 N-amy1 acetate
 Concen: 0.237 ug/l
 RT: 12.482 min Scan# 1773
 Delta R.T. -0.012 min
 Lab File: VN074838.D
 Acq: 10 Oct 2022 17:49



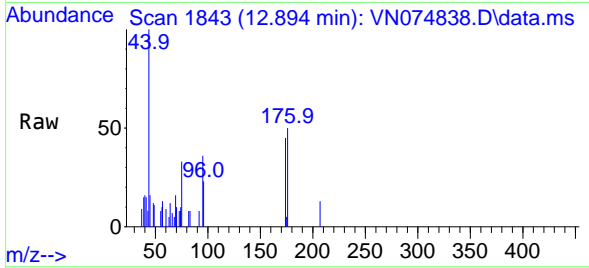
Tgt Ion: 43 Resp: 4410
 Ion Ratio Lower Upper
 43 100
 70 2.2 32.9 49.3#
 55 9.6 17.8 26.6#
 61 0.0 18.9 28.3#



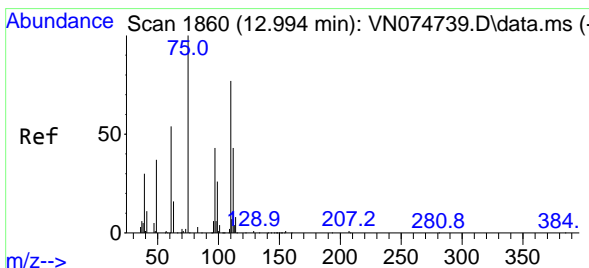
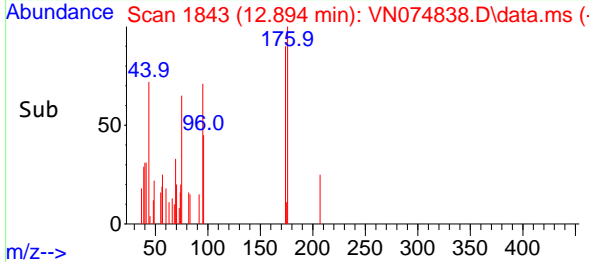
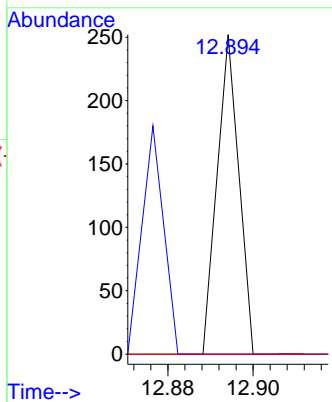


#75
 1,1,2,2-Tetrachloroethane
 Concen: Below Cal
 RT: 12.894 min Scan# 1836
 Delta R.T. -0.047 min
 Lab File: VN074838.D
 Acq: 10 Oct 2022 17:49

Instrument : MSVOA_N
 ClientSampleId :

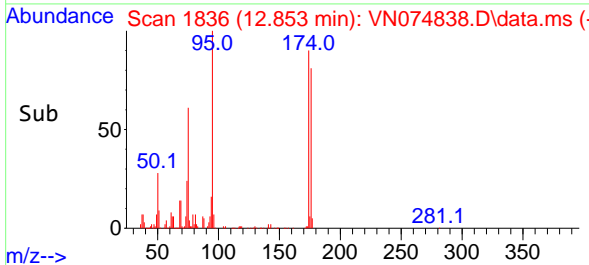
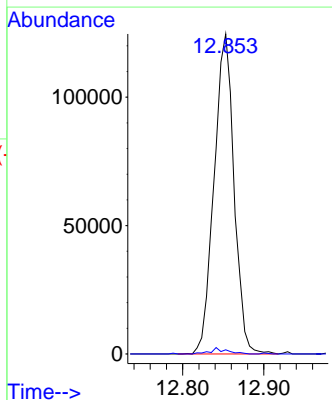
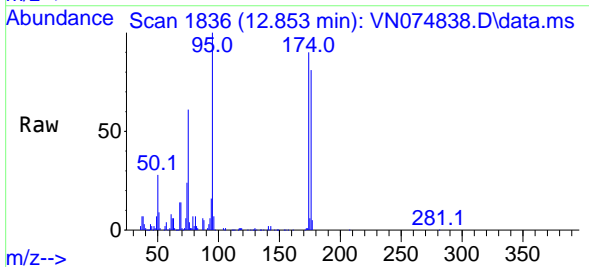


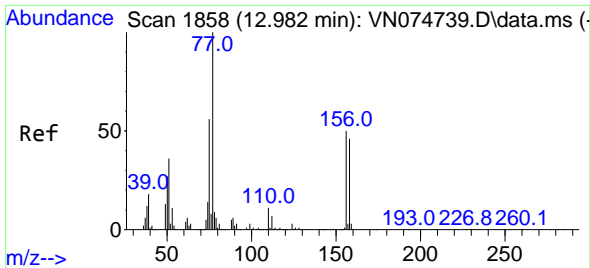
Tgt Ion: 83 Resp: 89
 Ion Ratio Lower Upper
 83 100
 131 0.0 4.3 12.8#
 85 0.0 32.9 98.6#



#76
 1,2,3-Trichloropropane
 Concen: 22.364 ug/l
 RT: 12.853 min Scan# 1836
 Delta R.T. -0.141 min
 Lab File: VN074838.D
 Acq: 10 Oct 2022 17:49

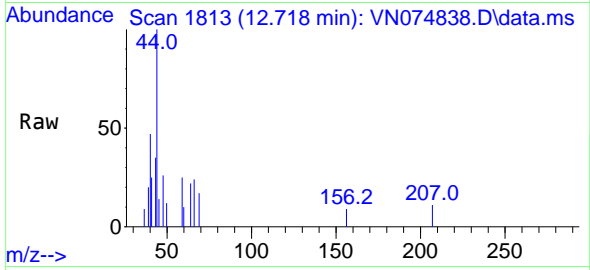
Tgt Ion: 75 Resp: 213157
 Ion Ratio Lower Upper
 75 100
 77 1.6 76.9 230.7#





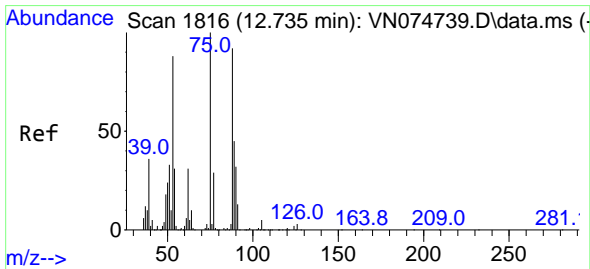
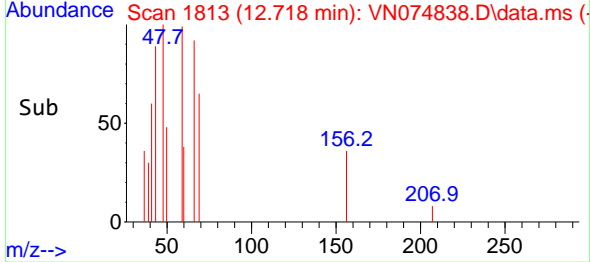
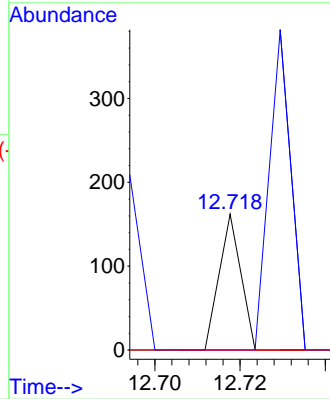
#77
 Bromobenzene
 Concen: Below Cal
 RT: 12.718 min Scan# 1813
 Delta R.T. -0.264 min
 Lab File: VN074838.D
 Acq: 10 Oct 2022 17:49

Instrument : MSVOA_N
 ClientSampled :

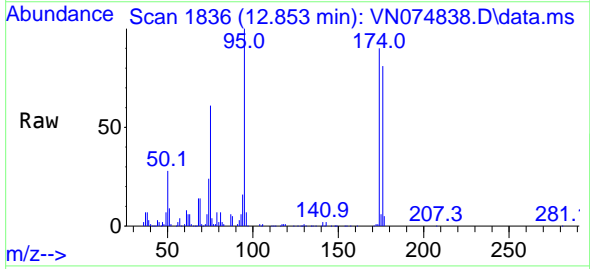


Tgt Ion:156 Resp: 57

Ion	Ratio	Lower	Upper
156	100		
77	236.8	124.7	374.1
158	0.0	48.3	144.9



#81
 trans-1,4-Dichloro-2-butene
 Concen: 43.573 ug/l
 RT: 12.853 min Scan# 1836
 Delta R.T. 0.118 min
 Lab File: VN074838.D
 Acq: 10 Oct 2022 17:49



Tgt Ion: 75 Resp: 213157

Ion	Ratio	Lower	Upper
75	100		
53	0.0	71.4	107.0
89	0.0	32.1	48.1

