

Data Path : Z:\voasrv\HPCHEM1\MSVOA_N\Data\VN101022\
 Data File : VN074834.D
 Acq On : 10 Oct 2022 16:12
 Operator : JC\MD
 Sample : N4894-07
 Misc : 5.0mL/MSVOA_N/WATER
 ALS Vial : 11 Sample Multiplier: 1

Instrument :
 MSVOA_N
 ClientSampleId :
 MW-4

Quant Time: Oct 11 06:25:51 2022
 Quant Method : Z:\voasrv\HPCHEM1\MSVOA_N\methods\82N100522W.M
 Quant Title : SW846 8260
 QLast Update : Thu Oct 06 05:37:50 2022
 Response via : Initial Calibration

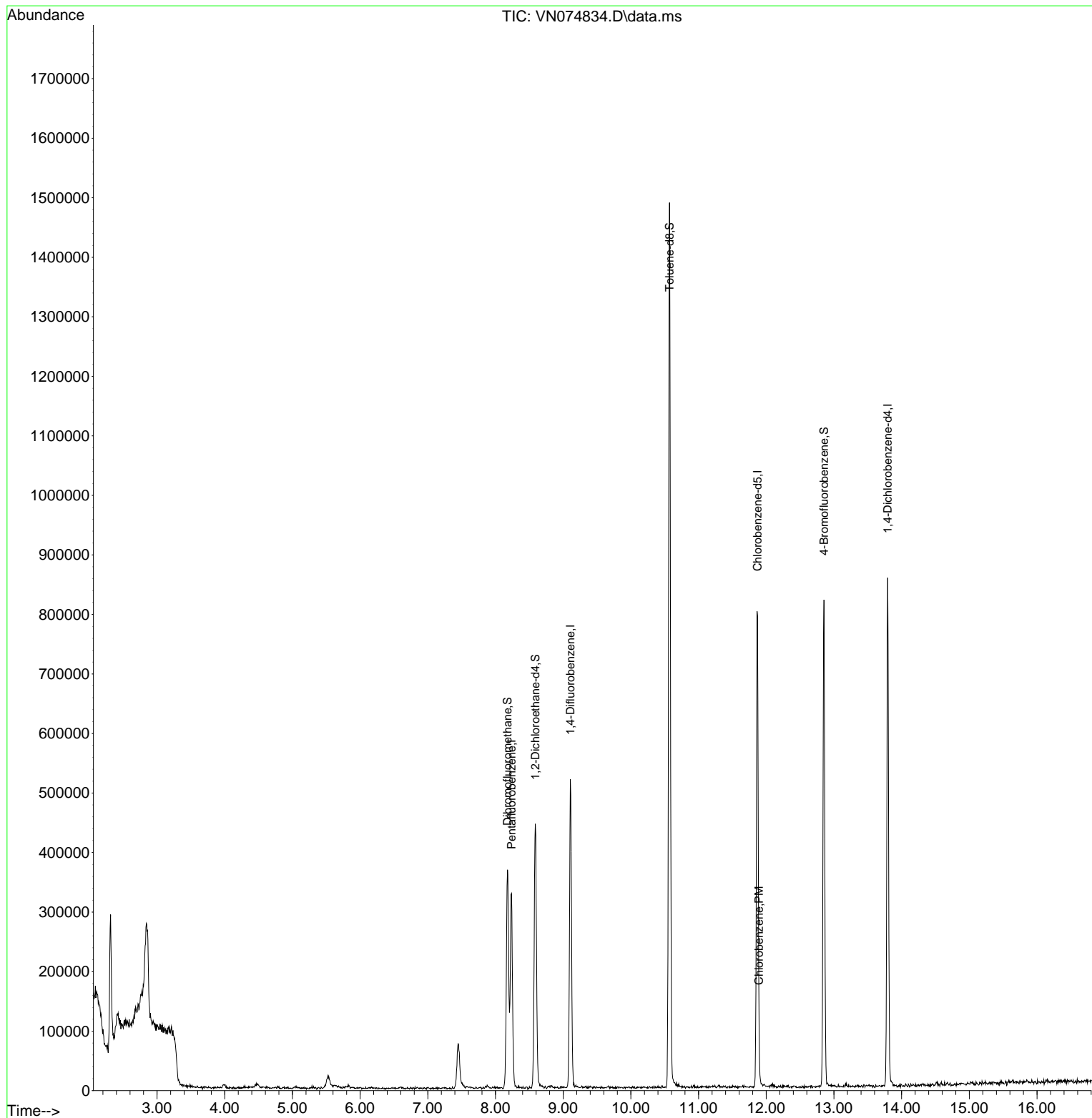
Compound	R.T.	QIon	Response	Conc	Units	Dev(Min)
Internal Standards						
1) Pentafluorobenzene	8.236	168	231554	50.000	ug/l	0.00
34) 1,4-Difluorobenzene	9.106	114	439336	50.000	ug/l	0.00
63) Chlorobenzene-d5	11.871	117	446798	50.000	ug/l	0.00
72) 1,4-Dichlorobenzene-d4	13.794	152	212928	50.000	ug/l	0.00
System Monitoring Compounds						
33) 1,2-Dichloroethane-d4	8.588	65	332056	60.523	ug/l	0.00
Spiked Amount	50.000	Range	74 - 125	Recovery	=	121.040%
35) Dibromofluoromethane	8.177	113	257079	57.916	ug/l	0.00
Spiked Amount	50.000	Range	75 - 124	Recovery	=	115.840%
50) Toluene-d8	10.571	98	1028643	54.006	ug/l	0.00
Spiked Amount	50.000	Range	86 - 113	Recovery	=	108.020%
62) 4-Bromofluorobenzene	12.853	95	255544	44.136	ug/l	0.00
Spiked Amount	50.000	Range	83 - 123	Recovery	=	88.280%
Target Compounds						
65) Chlorobenzene	11.894	112	7287	0.532	ug/l	89

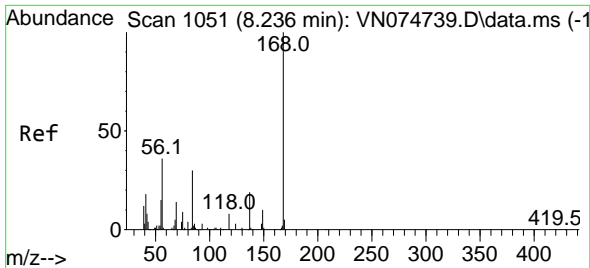
(#) = qualifier out of range (m) = manual integration (+) = signals summed

Data Path : Z:\voasrv\HPCHEM1\MSVOA_N\Data\VN101022\
 Data File : VN074834.D
 Acq On : 10 Oct 2022 16:12
 Operator : JC\MD
 Sample : N4894-07
 Misc : 5.0mL/MSVOA_N/WATER
 ALS Vial : 11 Sample Multiplier: 1

Instrument :
 MSVOA_N
 ClientSampleId :
 MW-4

Quant Time: Oct 11 06:25:51 2022
 Quant Method : Z:\voasrv\HPCHEM1\MSVOA_N\methods\82N100522W.M
 Quant Title : SW846 8260
 QLast Update : Thu Oct 06 05:37:50 2022
 Response via : Initial Calibration

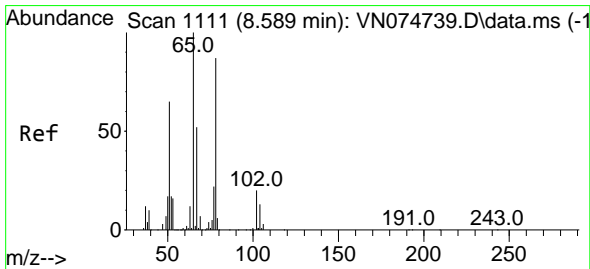
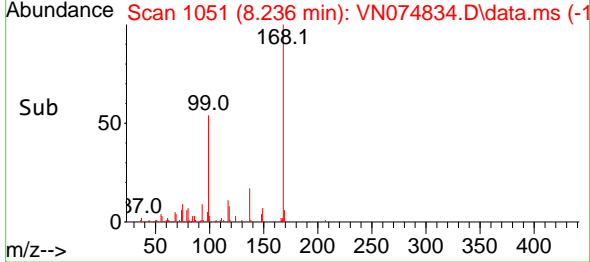
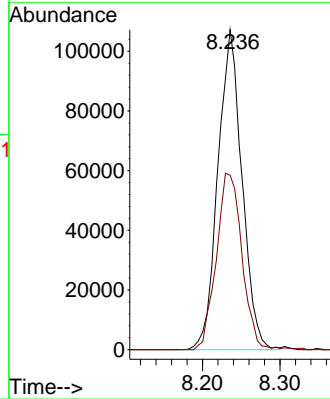
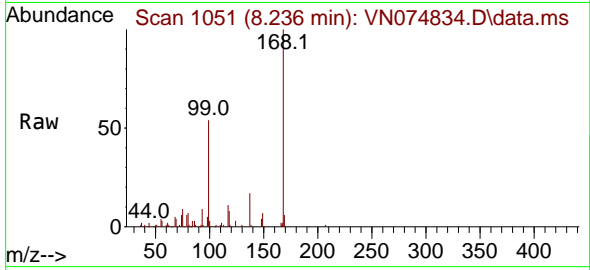




#1
 Pentafluorobenzene
 Concen: 50.000 ug/l
 RT: 8.236 min Scan# 1051
 Delta R.T. -0.001 min
 Lab File: VN074834.D
 Acq: 10 Oct 2022 16:12

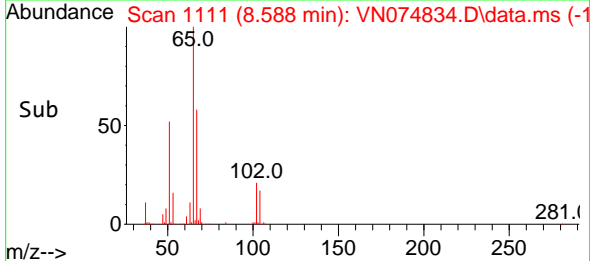
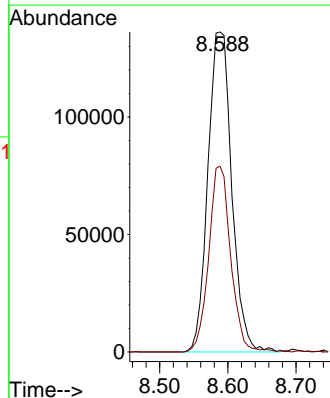
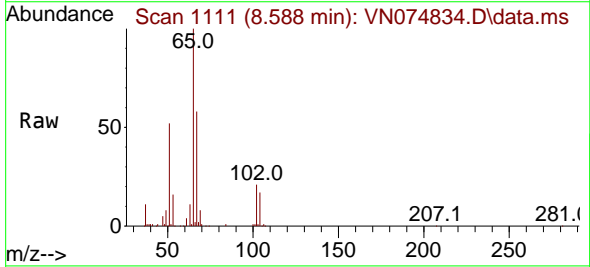
Instrument : MSVOA_N
 ClientSampleId : MW-4

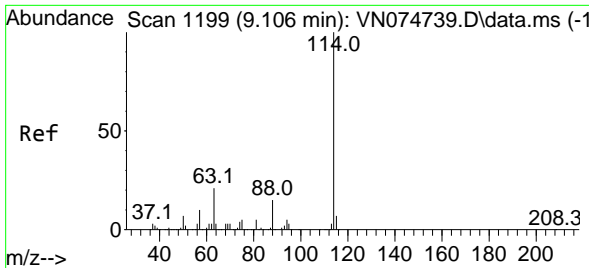
Tgt Ion:168 Resp: 231554
 Ion Ratio Lower Upper
 168 100
 99 54.5 42.8 64.2



#33
 1,2-Dichloroethane-d4
 Concen: 60.523 ug/l
 RT: 8.588 min Scan# 1111
 Delta R.T. -0.000 min
 Lab File: VN074834.D
 Acq: 10 Oct 2022 16:12

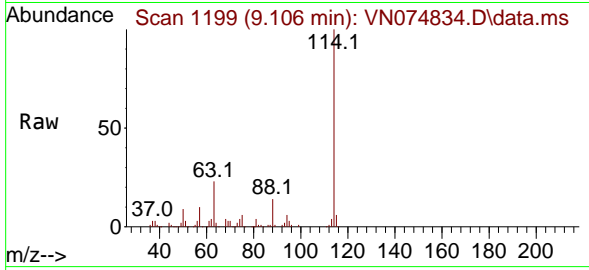
Tgt Ion: 65 Resp: 332056
 Ion Ratio Lower Upper
 65 100
 67 53.3 0.0 109.0



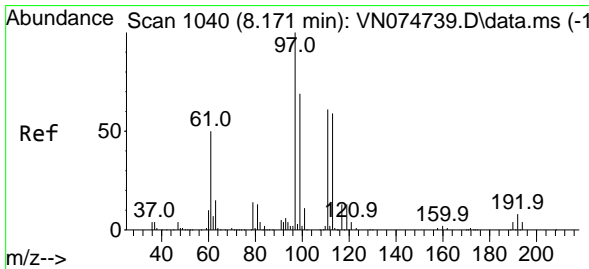
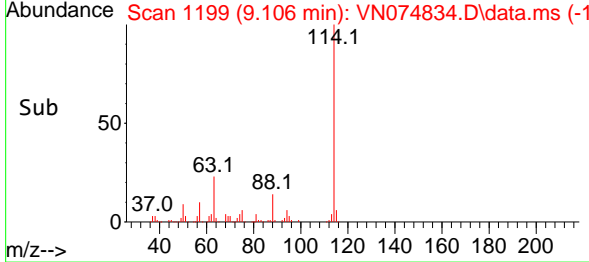
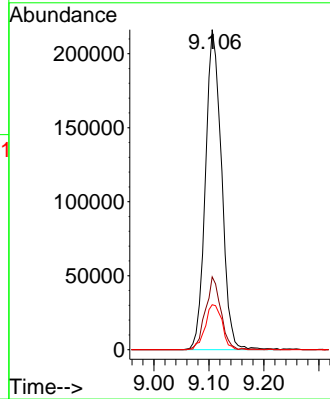


#34
 1,4-Difluorobenzene
 Concen: 50.000 ug/l
 RT: 9.106 min Scan# 1199
 Delta R.T. -0.000 min
 Lab File: VN074834.D
 Acq: 10 Oct 2022 16:12

Instrument : MSVOA_N
 ClientSampleId : MW-4

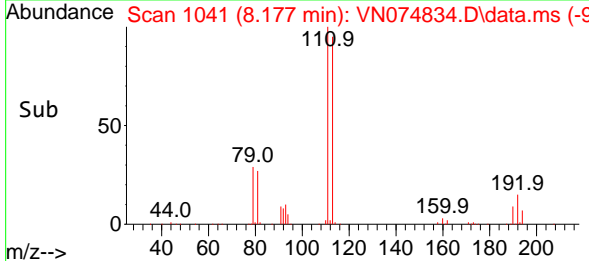
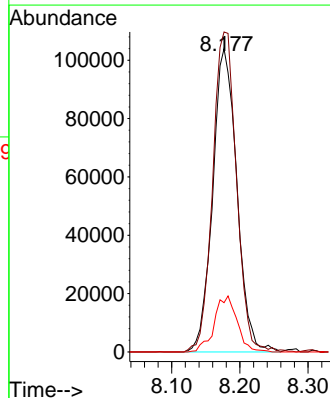
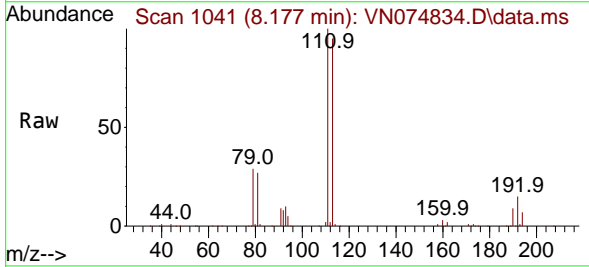


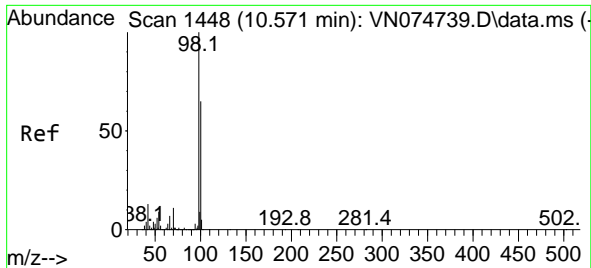
Tgt Ion:114 Resp: 439336
 Ion Ratio Lower Upper
 114 100
 63 22.7 0.0 41.2
 88 14.1 0.0 30.2



#35
 Dibromofluoromethane
 Concen: 57.916 ug/l
 RT: 8.177 min Scan# 1041
 Delta R.T. 0.006 min
 Lab File: VN074834.D
 Acq: 10 Oct 2022 16:12

Tgt Ion:113 Resp: 257079
 Ion Ratio Lower Upper
 113 100
 111 103.7 83.0 124.6
 192 17.4 12.6 18.8

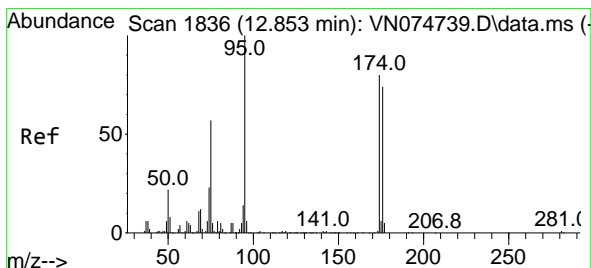
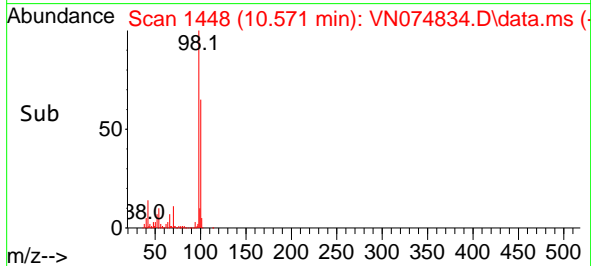
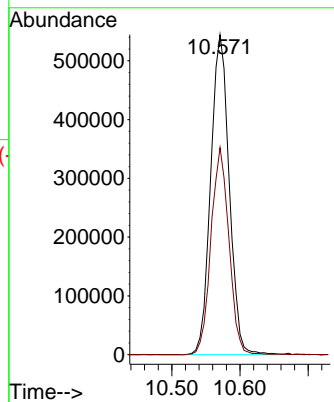
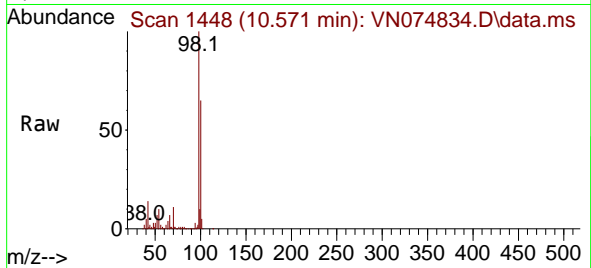




#50
 Toluene-d8
 Concen: 54.006 ug/l
 RT: 10.571 min Scan# 1448
 Delta R.T. -0.000 min
 Lab File: VN074834.D
 Acq: 10 Oct 2022 16:12

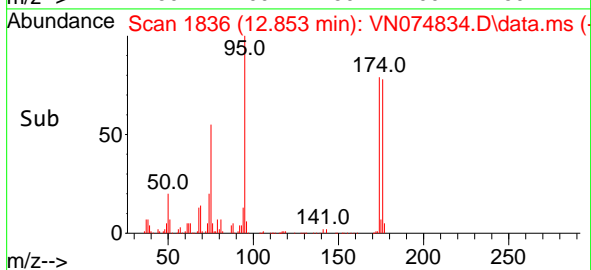
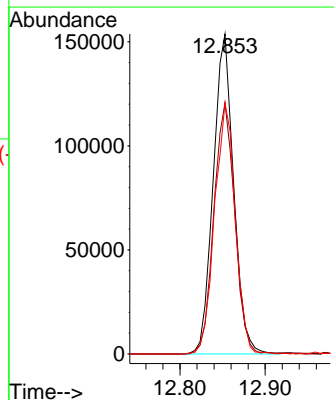
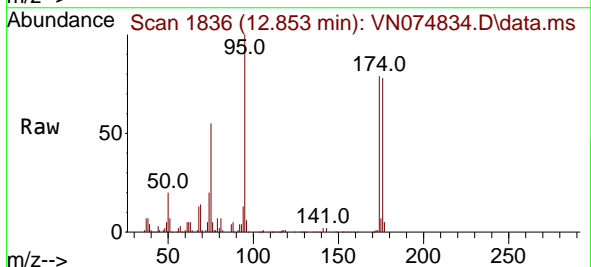
Instrument : MSVOA_N
 ClientSampleId : MW-4

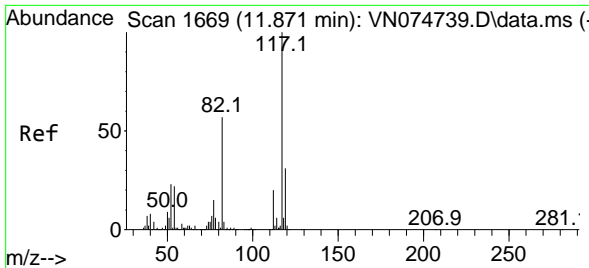
Tgt Ion: 98 Resp: 1028643
 Ion Ratio Lower Upper
 98 100
 100 62.9 50.7 76.1



#62
 4-Bromofluorobenzene
 Concen: 44.136 ug/l
 RT: 12.853 min Scan# 1836
 Delta R.T. -0.000 min
 Lab File: VN074834.D
 Acq: 10 Oct 2022 16:12

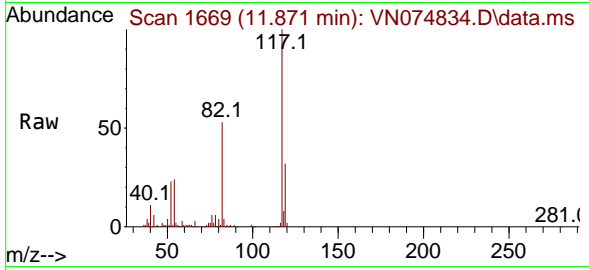
Tgt Ion: 95 Resp: 255544
 Ion Ratio Lower Upper
 95 100
 174 80.5 0.0 149.4
 176 79.3 0.0 142.0





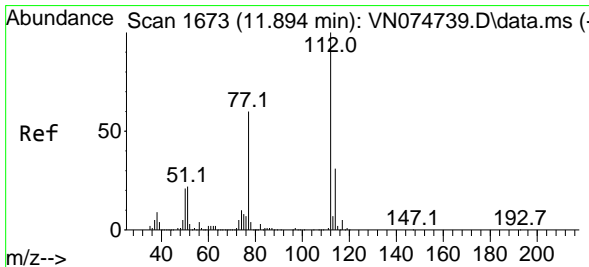
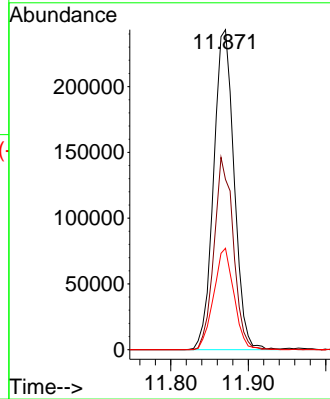
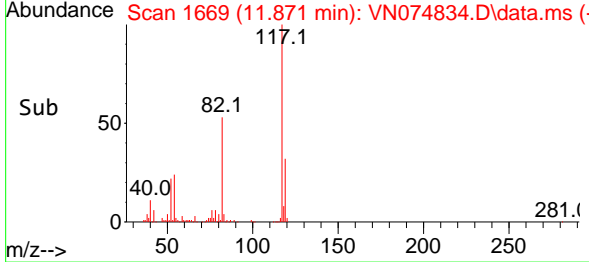
#63
 Chlorobenzene-d5
 Concen: 50.000 ug/l
 RT: 11.871 min Scan# 1669
 Delta R.T. -0.000 min
 Lab File: VN074834.D
 Acq: 10 Oct 2022 16:12

Instrument : MSVOA_N
 ClientSampleId : MW-4

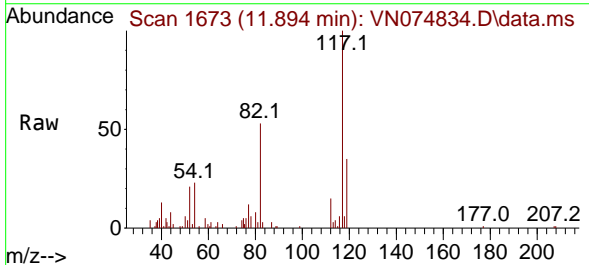


Tgt Ion:117 Resp: 446798

Ion	Ratio	Lower	Upper
117	100		
82	53.2	45.4	68.2
119	31.7	25.1	37.7

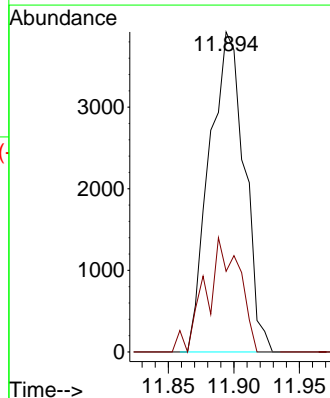
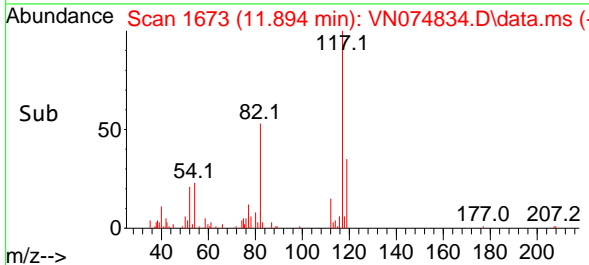


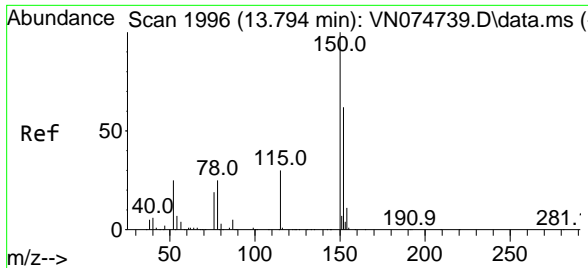
#65
 Chlorobenzene
 Concen: 0.532 ug/l
 RT: 11.894 min Scan# 1673
 Delta R.T. -0.000 min
 Lab File: VN074834.D
 Acq: 10 Oct 2022 16:12



Tgt Ion:112 Resp: 7287

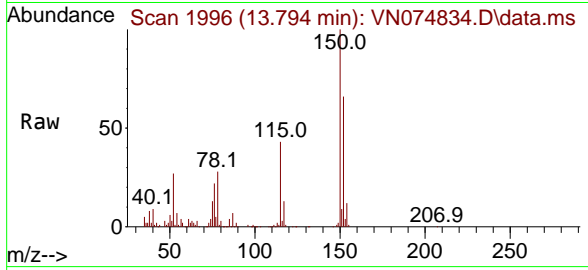
Ion	Ratio	Lower	Upper
112	100		
114	25.2	25.0	37.4





#72
 1,4-Dichlorobenzene-d4
 Concen: 50.000 ug/l
 RT: 13.794 min Scan# 1996
 Delta R.T. -0.000 min
 Lab File: VN074834.D
 Acq: 10 Oct 2022 16:12

Instrument : MSVOA_N
 ClientSampleId : MW-4



Tgt Ion:152 Resp: 212928

Ion	Ratio	Lower	Upper
152	100		
115	61.2	30.0	90.0
150	157.2	0.0	356.4

