

Data Path : Z:\voasrv\HPCHEM1\MSVOA_N\Data\VN101123\
 Data File : VN079534.D
 Acq On : 11 Oct 2023 22:00
 Operator : JC\MD
 Sample : 04833-01
 Misc : 5.0mL/MSVOA_N/WATER
 ALS Vial : 27 Sample Multiplier: 1

Instrument :
 MSVOA_N
 ClientSampleId :

Quant Time: Oct 12 06:17:07 2023
 Quant Method : Z:\voasrv\HPCHEM1\MSVOA_N\methods\82N100523W.M
 Quant Title : SW846 8260
 QLast Update : Fri Oct 06 03:34:49 2023
 Response via : Initial Calibration

Compound	R.T.	QIon	Response	Conc	Units	Dev(Min)

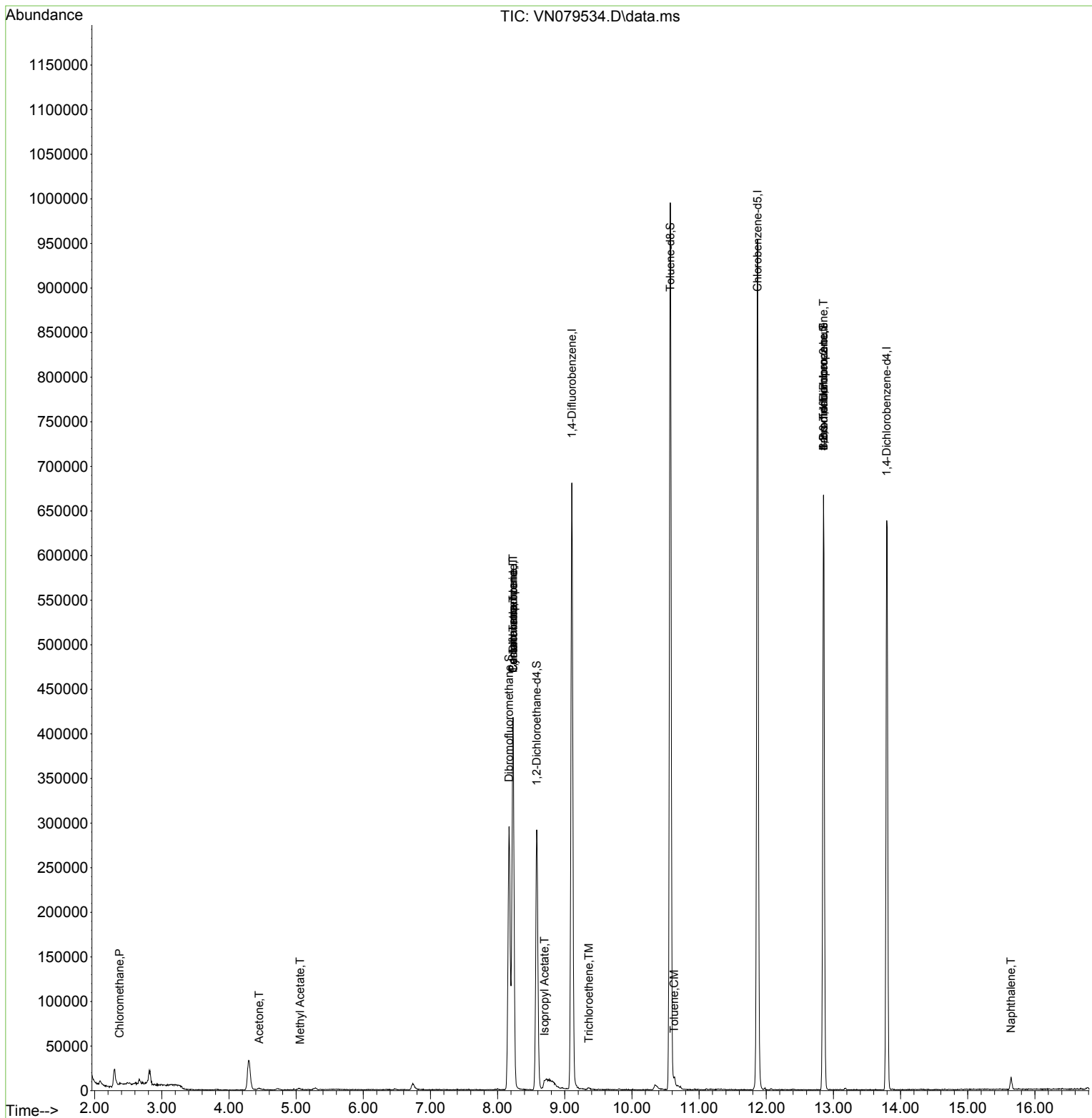
Internal Standards						
1) Pentafluorobenzene	8.230	168	289545	50.000	ug/l	0.00
34) 1,4-Difluorobenzene	9.106	114	561319	50.000	ug/l	0.00
63) Chlorobenzene-d5	11.871	117	532814	50.000	ug/l	0.00
72) 1,4-Dichlorobenzene-d4	13.794	152	170110	50.000	ug/l	0.00
System Monitoring Compounds						
33) 1,2-Dichloroethane-d4	8.582	65	233663	49.771	ug/l	0.00
Spiked Amount	50.000	Range 74 - 125	Recovery	=	99.540%	
35) Dibromofluoromethane	8.171	113	206583	51.212	ug/l	0.00
Spiked Amount	50.000	Range 75 - 124	Recovery	=	102.420%	
50) Toluene-d8	10.571	98	674792	46.233	ug/l	0.00
Spiked Amount	50.000	Range 86 - 113	Recovery	=	92.460%	
62) 4-Bromofluorobenzene	12.853	95	224044	47.831	ug/l	0.00
Spiked Amount	50.000	Range 83 - 123	Recovery	=	95.660%	
Target Compounds						
						Qvalue
3) Chloromethane	2.371	50	1283	0.248	ug/l	97
16) Acetone	4.447	43	4122	2.214	ug/l #	83
18) Methyl Acetate	5.059	43	3289	0.361	ug/l #	54
20) Methylene Chloride	5.277	84	717	Below Cal	#	20
31) Cyclohexane	8.230	56	7804	1.172	ug/l #	18
36) 1,1-Dichloropropene	8.230	75	26341	4.351	ug/l #	46
38) Carbon Tetrachloride	8.230	117	31699	5.230	ug/l #	18
43) Isopropyl Acetate	8.700	43	7754	0.735	ug/l #	49
44) Trichloroethene	9.359	130	855	0.202	ug/l	97
52) Toluene	10.629	92	3535	0.334	ug/l	81
71) Bromoform	12.853	173	1534	0.482	ug/l #	1
75) 1,1,2,2-Tetrachloroethane	12.859	83	62	Below Cal	#	1
76) 1,2,3-Trichloropropane	12.853	75	124559	25.396	ug/l #	1
81) trans-1,4-Dichloro-2-b...	12.853	75	124559	73.687	ug/l #	15
95) Naphthalene	15.647	128	11687	2.058	ug/l	97

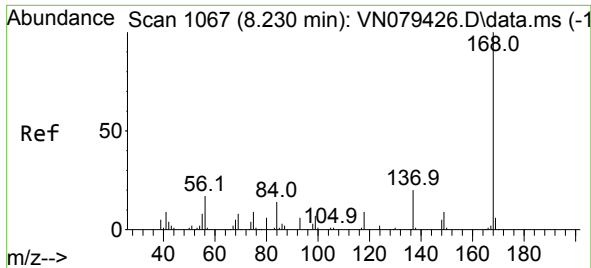
(#) = qualifier out of range (m) = manual integration (+) = signals summed

Data Path : Z:\voasrv\HPCHEM1\MSVOA_N\Data\VN101123\
 Data File : VN079534.D
 Acq On : 11 Oct 2023 22:00
 Operator : JC\MD
 Sample : 04833-01
 Misc : 5.0mL/MSVOA_N/WATER
 ALS Vial : 27 Sample Multiplier: 1

Instrument :
 MSVOA_N
 ClientSampleId :

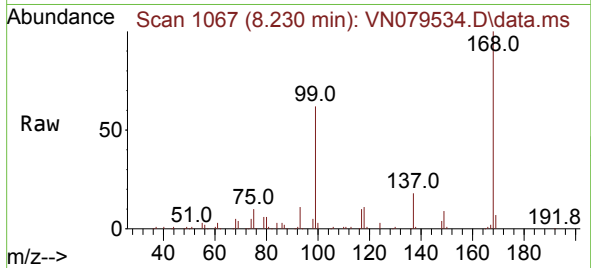
Quant Time: Oct 12 06:17:07 2023
 Quant Method : Z:\voasrv\HPCHEM1\MSVOA_N\methods\82N100523W.M
 Quant Title : SW846 8260
 QLast Update : Fri Oct 06 03:34:49 2023
 Response via : Initial Calibration



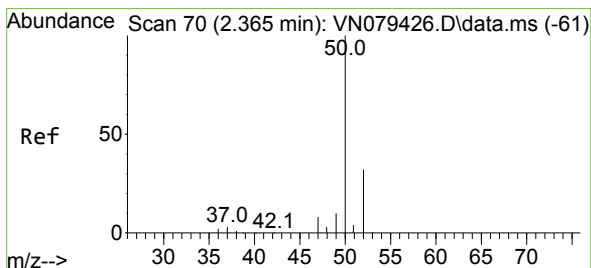
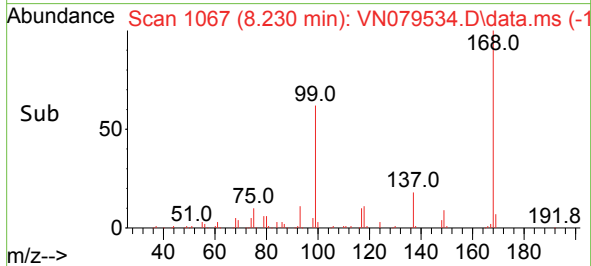
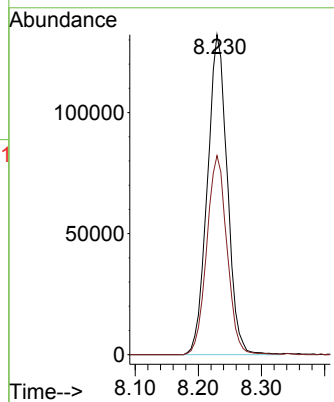


#1
 Pentafluorobenzene
 Concen: 50.000 ug/l
 RT: 8.230 min Scan# 10
 Delta R.T. -0.000 min
 Lab File: VN079534.D
 Acq: 11 Oct 2023 22:00

Instrument :
 MSVOA_N
 ClientSampleId :

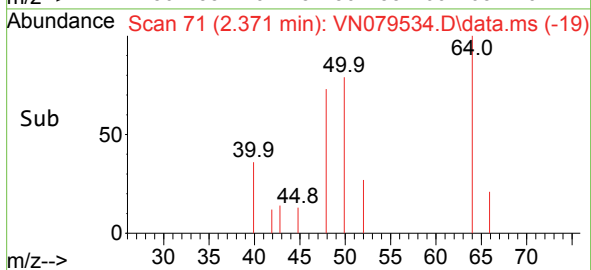
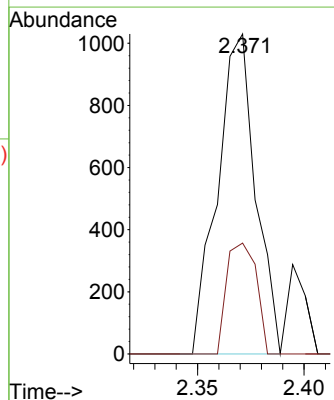
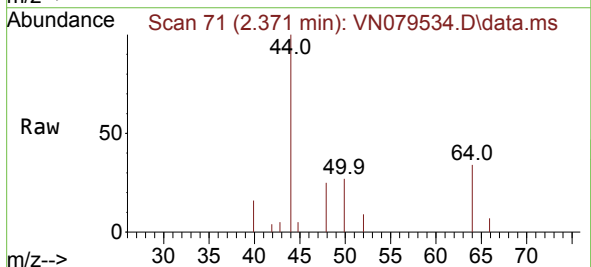


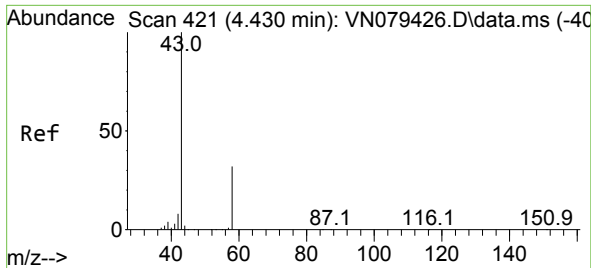
Tgt Ion:168 Resp: 289545
 Ion Ratio Lower Upper
 168 100
 99 62.2 53.0 79.6



#3
 Chloromethane
 Concen: 0.248 ug/l
 RT: 2.371 min Scan# 71
 Delta R.T. 0.006 min
 Lab File: VN079534.D
 Acq: 11 Oct 2023 22:00

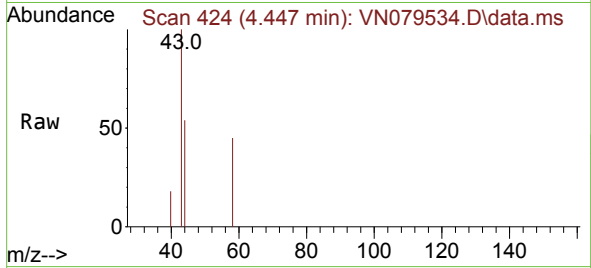
Tgt Ion: 50 Resp: 1283
 Ion Ratio Lower Upper
 50 100
 52 34.7 26.5 39.7



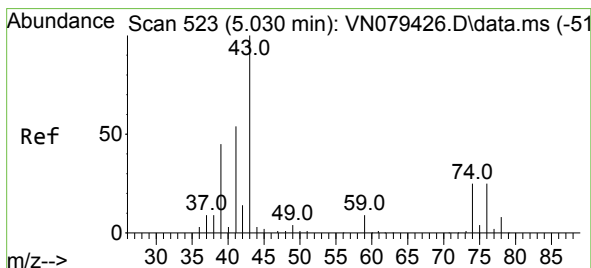
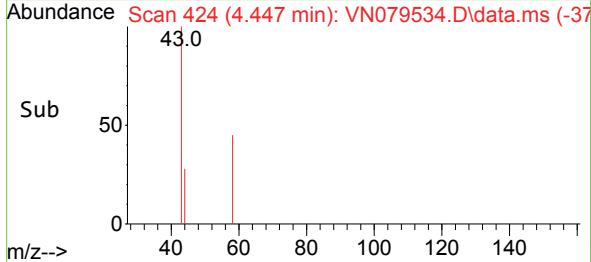
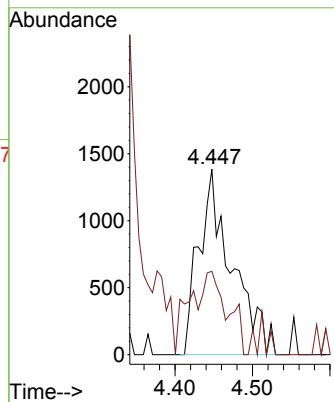


#16
 Acetone
 Concen: 2.214 ug/l
 RT: 4.447 min Scan# 41
 Delta R.T. 0.017 min
 Lab File: VN079534.D
 Acq: 11 Oct 2023 22:00

Instrument :
 MSVOA_N
 ClientSampleId :

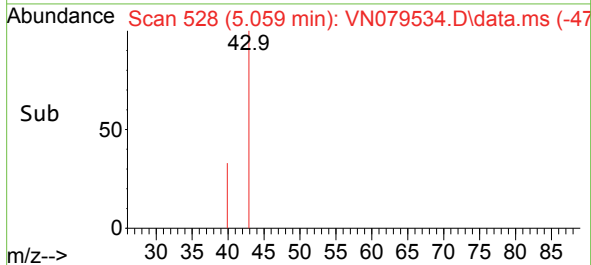
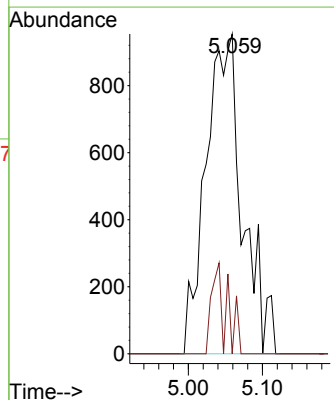
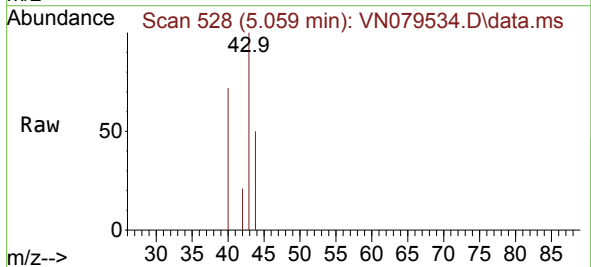


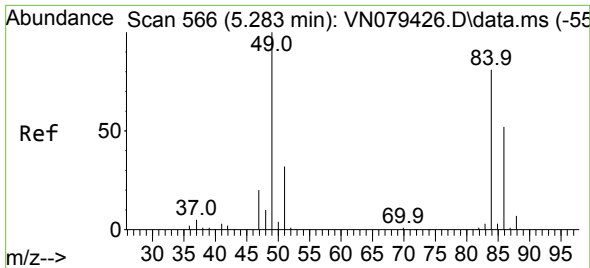
Tgt Ion: 43 Resp: 4122
 Ion Ratio Lower Upper
 43 100
 58 44.9 28.0 42.0#



#18
 Methyl Acetate
 Concen: 0.361 ug/l
 RT: 5.059 min Scan# 528
 Delta R.T. 0.029 min
 Lab File: VN079534.D
 Acq: 11 Oct 2023 22:00

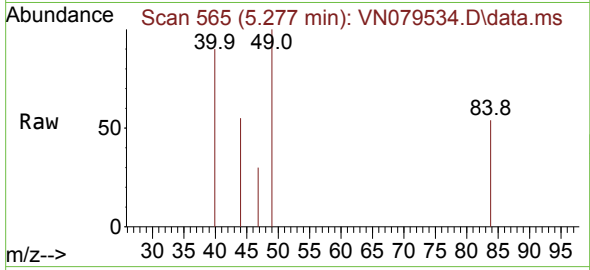
Tgt Ion: 43 Resp: 3289
 Ion Ratio Lower Upper
 43 100
 74 7.1 26.2 39.4#





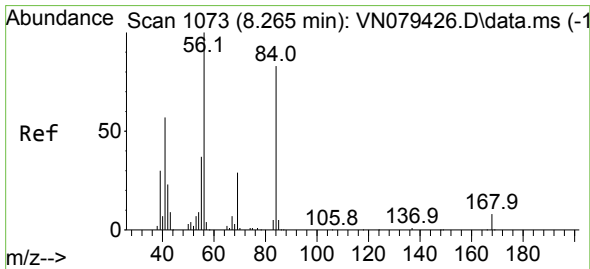
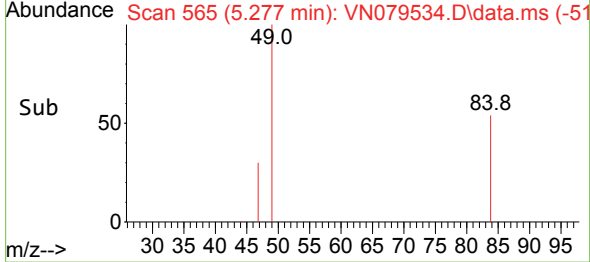
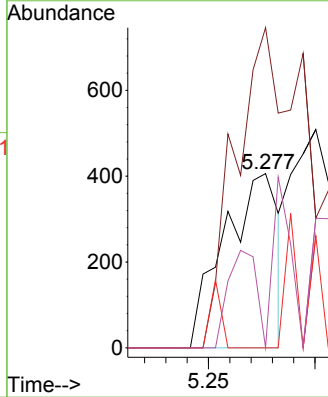
#20
 Methylene Chloride
 Concen: Below Cal
 RT: 5.277 min Scan# 51
 Delta R.T. -0.006 min
 Lab File: VN079534.D
 Acq: 11 Oct 2023 22:00

Instrument : MSVOA_N
 ClientSampleId :



Tgt Ion: 84 Resp: 717

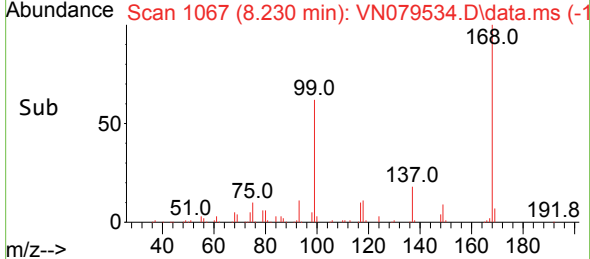
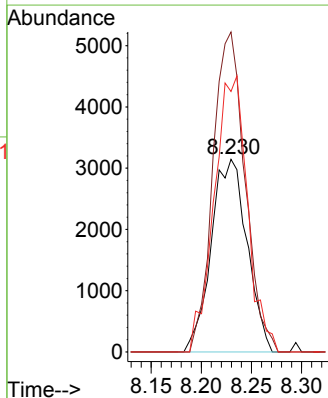
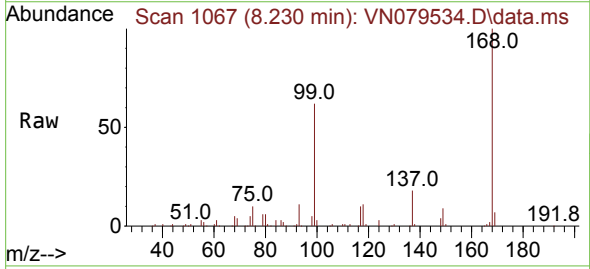
Ion	Ratio	Lower	Upper
84	100		
49	183.7	79.7	119.5#
51	0.0	25.2	37.8#
86	0.0	53.3	79.9#

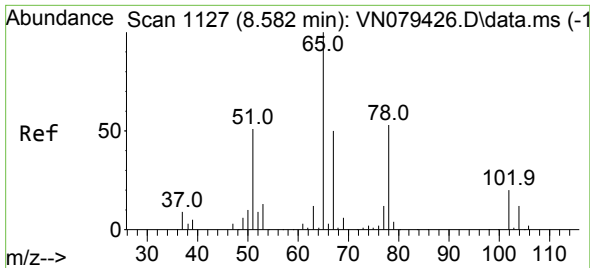


#31
 Cyclohexane
 Concen: 1.172 ug/l
 RT: 8.230 min Scan# 1067
 Delta R.T. -0.035 min
 Lab File: VN079534.D
 Acq: 11 Oct 2023 22:00

Tgt Ion: 56 Resp: 7804

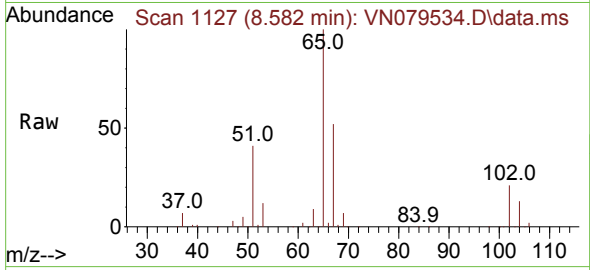
Ion	Ratio	Lower	Upper
56	100		
69	166.1	26.8	40.2#
84	135.2	81.8	122.6#



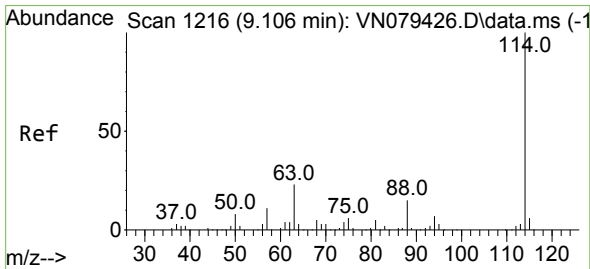
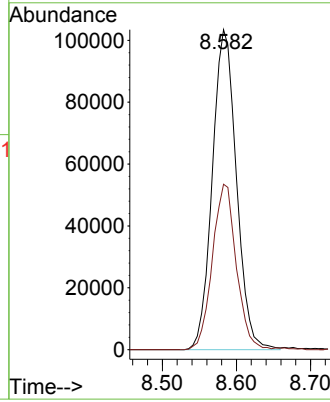
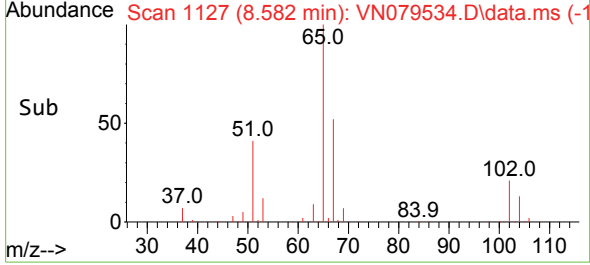


#33
 1,2-Dichloroethane-d4
 Concen: 49.771 ug/l
 RT: 8.582 min Scan# 1127
 Delta R.T. -0.000 min
 Lab File: VN079534.D
 Acq: 11 Oct 2023 22:00

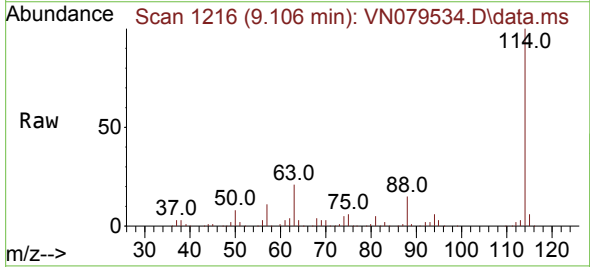
Instrument : MSVOA_N
 ClientSampleId :



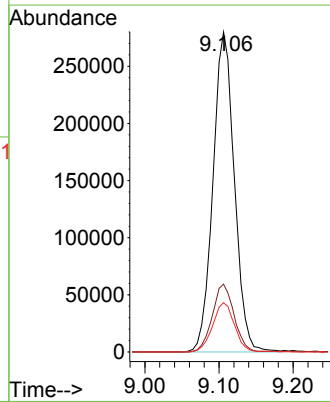
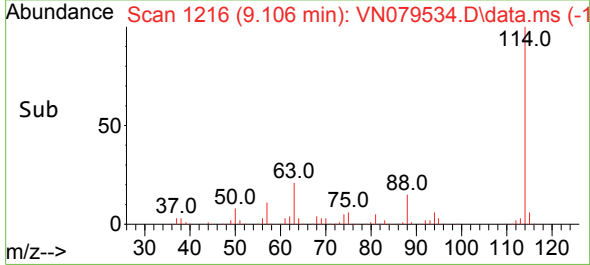
Tgt Ion: 65 Resp: 233663
 Ion Ratio Lower Upper
 65 100
 67 51.2 0.0 106.6

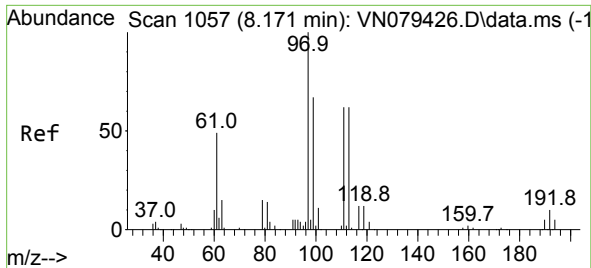


#34
 1,4-Difluorobenzene
 Concen: 50.000 ug/l
 RT: 9.106 min Scan# 1216
 Delta R.T. -0.000 min
 Lab File: VN079534.D
 Acq: 11 Oct 2023 22:00



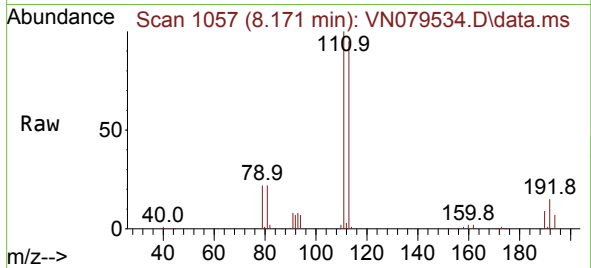
Tgt Ion: 114 Resp: 561319
 Ion Ratio Lower Upper
 114 100
 63 21.2 0.0 36.4
 88 15.4 0.0 30.6



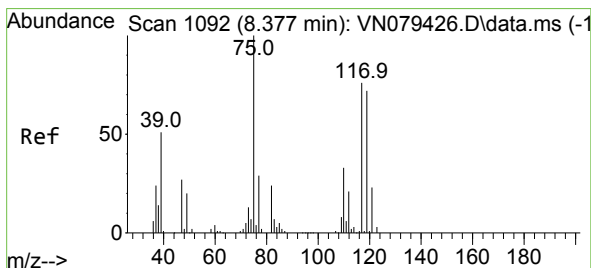
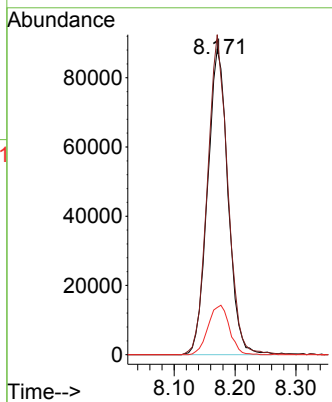
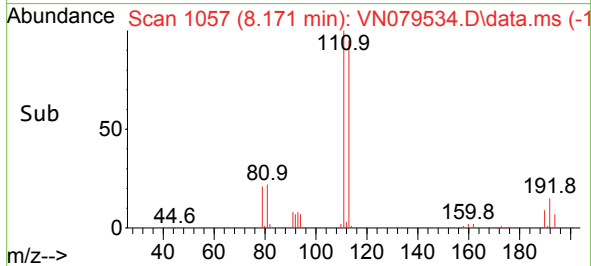


#35
 Dibromofluoromethane
 Concen: 51.212 ug/l
 RT: 8.171 min Scan# 1057
 Delta R.T. -0.000 min
 Lab File: VN079534.D
 Acq: 11 Oct 2023 22:00

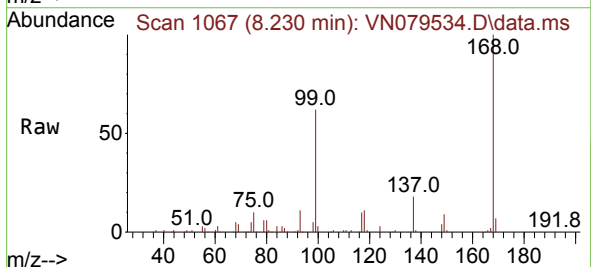
Instrument : MSVOA_N
 ClientSampleId :



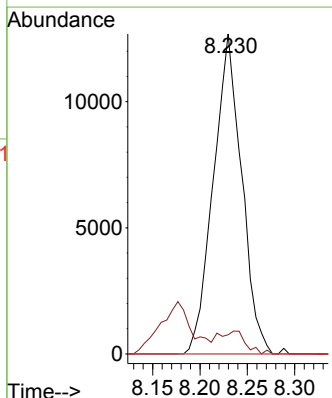
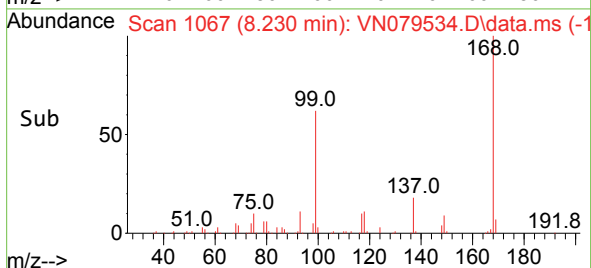
Tgt Ion: 113 Resp: 206583
 Ion Ratio Lower Upper
 113 100
 111 103.6 82.6 123.8
 192 16.8 12.7 19.1

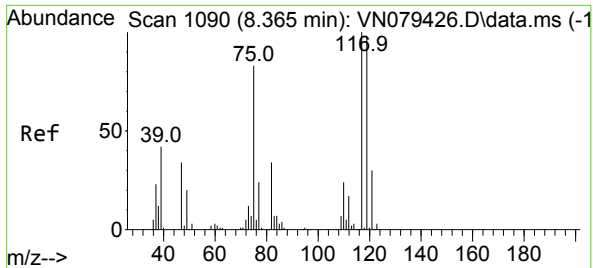


#36
 1,1-Dichloropropene
 Concen: 4.351 ug/l
 RT: 8.230 min Scan# 1067
 Delta R.T. -0.147 min
 Lab File: VN079534.D
 Acq: 11 Oct 2023 22:00



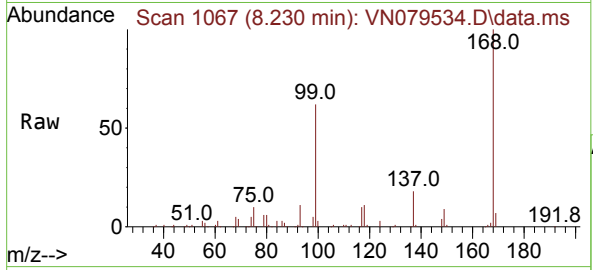
Tgt Ion: 75 Resp: 26341
 Ion Ratio Lower Upper
 75 100
 110 6.8 19.1 57.3#
 77 0.0 25.0 37.4#





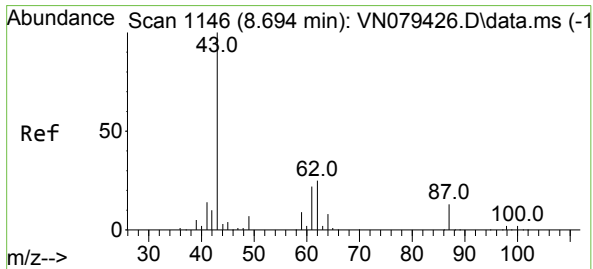
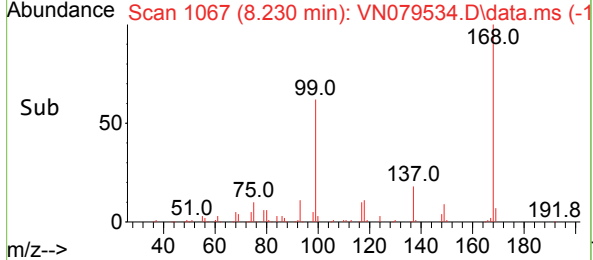
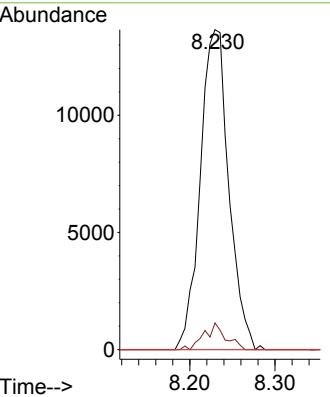
#38
 Carbon Tetrachloride
 Concen: 5.230 ug/l
 RT: 8.230 min Scan# 1067
 Delta R.T. -0.135 min
 Lab File: VN079534.D
 Acq: 11 Oct 2023 22:00

Instrument : MSVOA_N
 ClientSampleId :



Tgt Ion:117 Resp: 31699

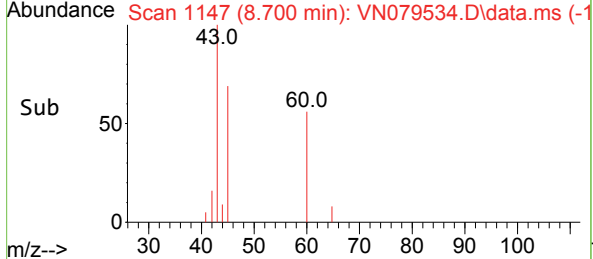
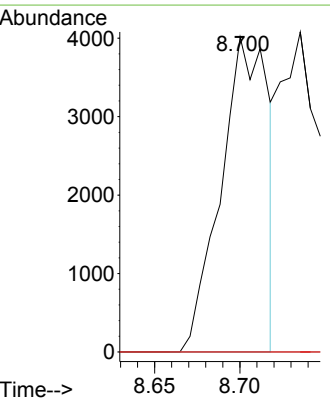
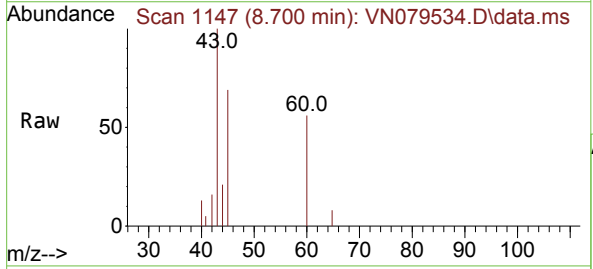
Ion	Ratio	Lower	Upper
117	100		
119	8.4	77.3	115.9#
121	0.0	23.3	34.9#

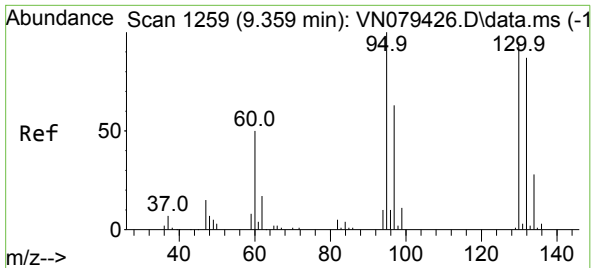


#43
 Isopropyl Acetate
 Concen: 0.735 ug/l
 RT: 8.700 min Scan# 1147
 Delta R.T. 0.006 min
 Lab File: VN079534.D
 Acq: 11 Oct 2023 22:00

Tgt Ion: 43 Resp: 7754

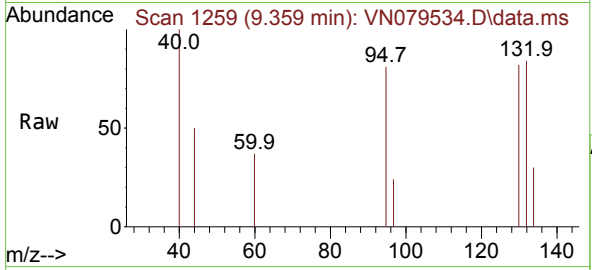
Ion	Ratio	Lower	Upper
43	100		
61	0.0	24.7	37.1#
87	0.0	14.6	21.8#



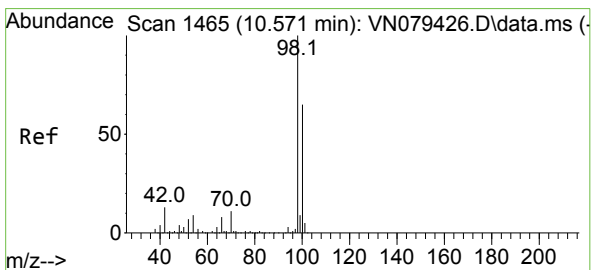
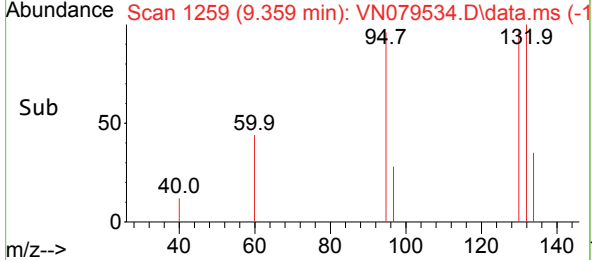
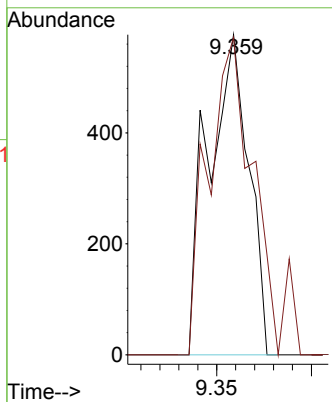


#44
 Trichloroethene
 Concen: 0.202 ug/l
 RT: 9.359 min Scan# 11
 Delta R.T. -0.000 min
 Lab File: VN079534.D
 Acq: 11 Oct 2023 22:00

Instrument :
 MSVOA_N
 ClientSampleId :

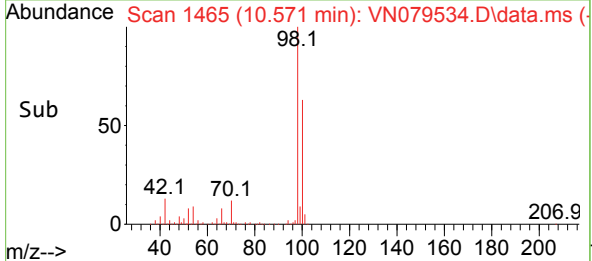
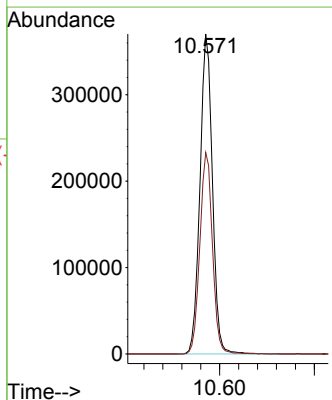
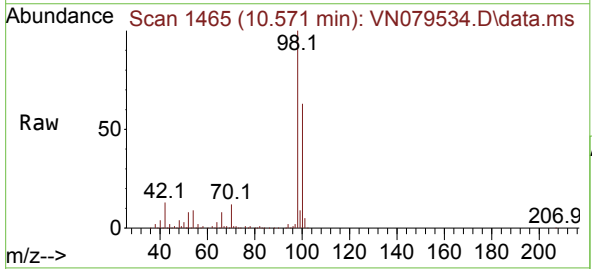


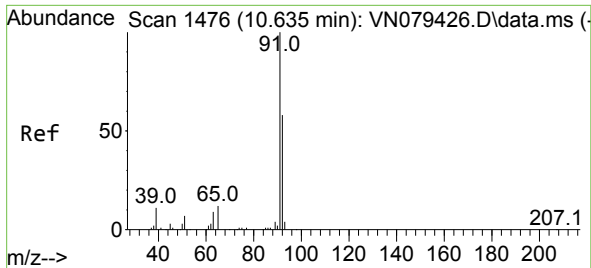
Tgt Ion:130 Resp: 855
 Ion Ratio Lower Upper
 130 100
 95 99.1 0.0 204.6



#50
 Toluene-d8
 Concen: 46.233 ug/l
 RT: 10.571 min Scan# 1465
 Delta R.T. -0.000 min
 Lab File: VN079534.D
 Acq: 11 Oct 2023 22:00

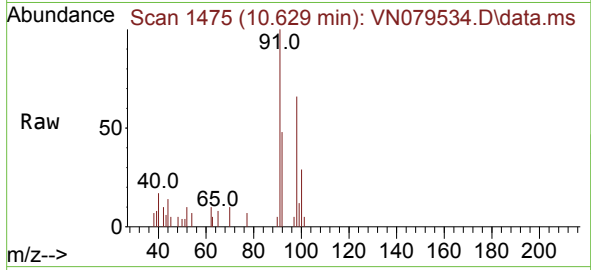
Tgt Ion: 98 Resp: 674792
 Ion Ratio Lower Upper
 98 100
 100 63.8 52.0 78.0



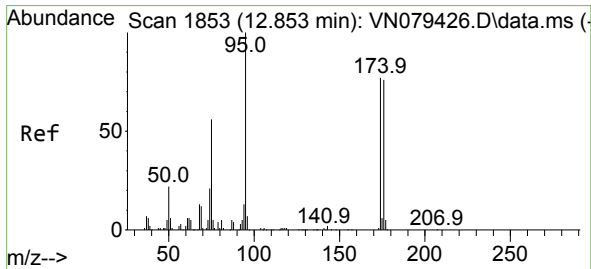
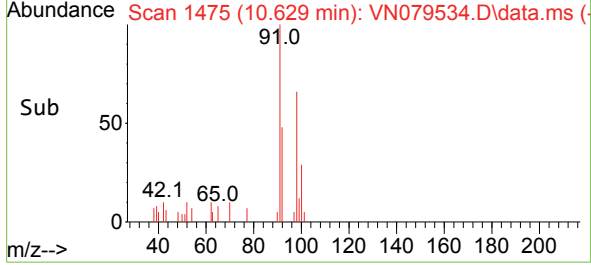
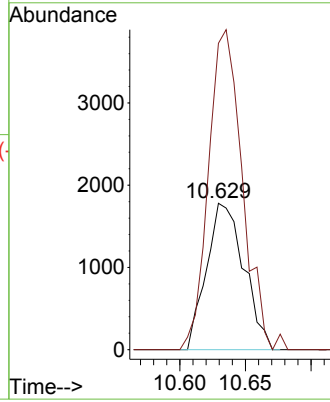


#52
 Toluene
 Concen: 0.334 ug/l
 RT: 10.629 min Scan# 1476
 Delta R.T. -0.006 min
 Lab File: VN079534.D
 Acq: 11 Oct 2023 22:00

Instrument : MSVOA_N
 ClientSampleId :

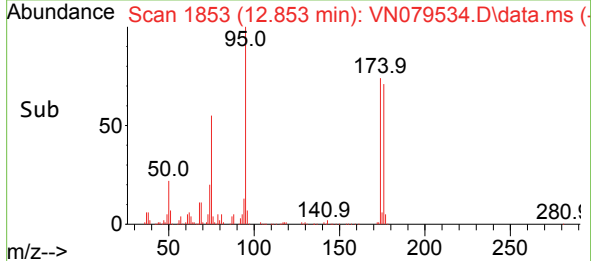
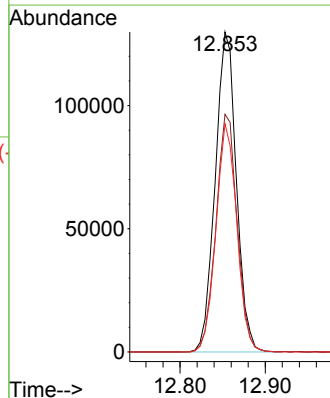
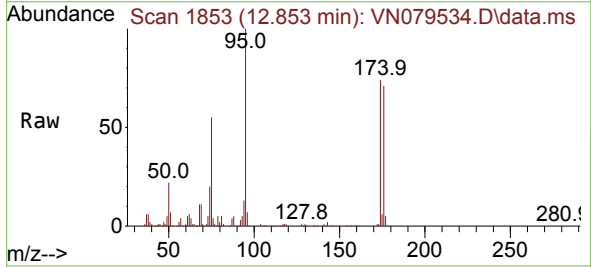


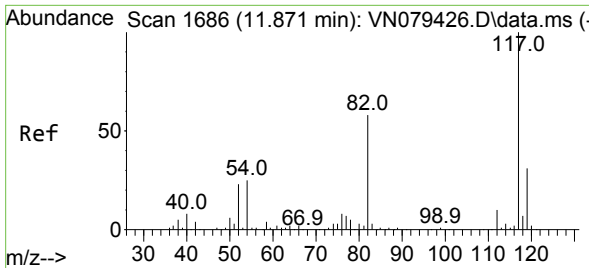
Tgt Ion: 92 Resp: 3535
 Ion Ratio Lower Upper
 92 100
 91 198.4 137.4 206.0



#62
 4-Bromofluorobenzene
 Concen: 47.831 ug/l
 RT: 12.853 min Scan# 1853
 Delta R.T. -0.000 min
 Lab File: VN079534.D
 Acq: 11 Oct 2023 22:00

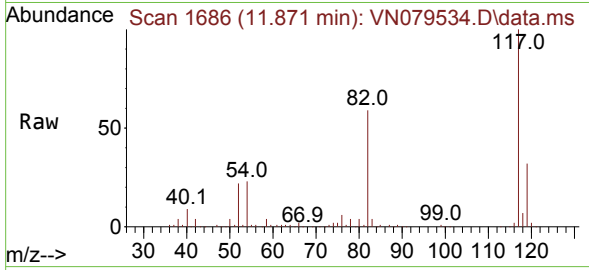
Tgt Ion: 95 Resp: 224044
 Ion Ratio Lower Upper
 95 100
 174 74.8 0.0 143.8
 176 70.4 0.0 135.8



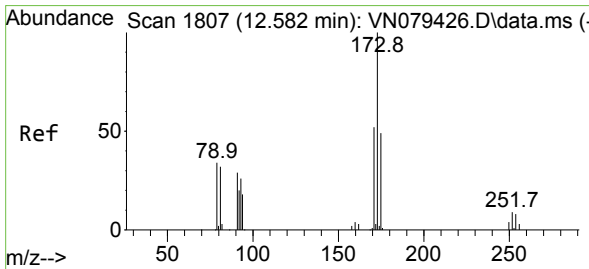
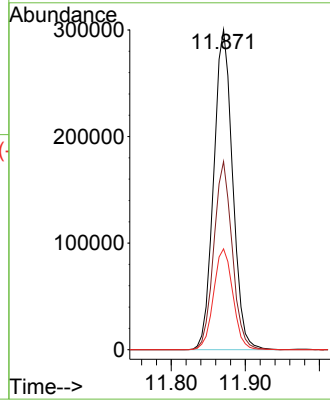
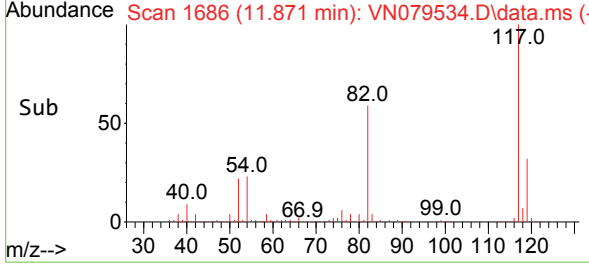


#63
 Chlorobenzene-d5
 Concen: 50.000 ug/l
 RT: 11.871 min Scan# 117
 Delta R.T. -0.000 min
 Lab File: VN079534.D
 Acq: 11 Oct 2023 22:00

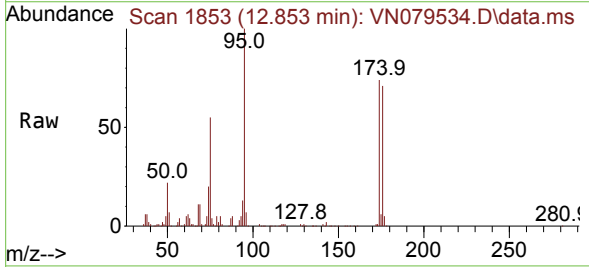
Instrument :
 MSVOA_N
 ClientSampleId :



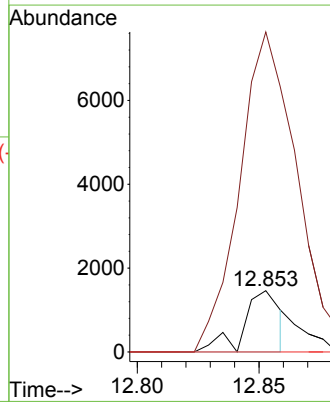
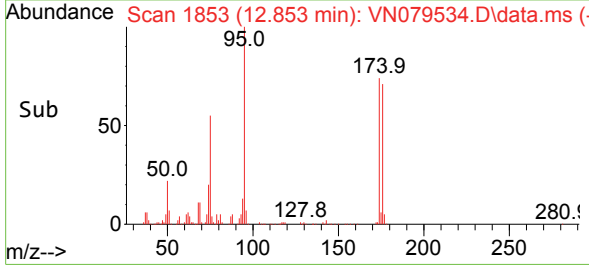
Tgt Ion:117 Resp: 532814
 Ion Ratio Lower Upper
 117 100
 82 58.8 44.0 66.0
 119 31.5 25.6 38.4

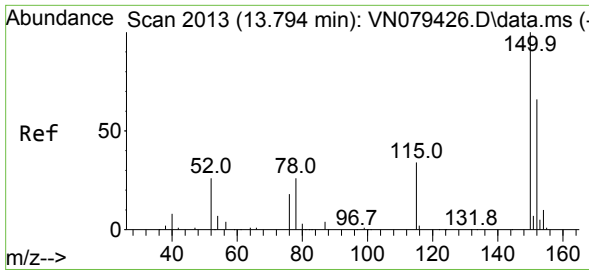


#71
 Bromoform
 Concen: 0.482 ug/l
 RT: 12.853 min Scan# 1853
 Delta R.T. 0.271 min
 Lab File: VN079534.D
 Acq: 11 Oct 2023 22:00



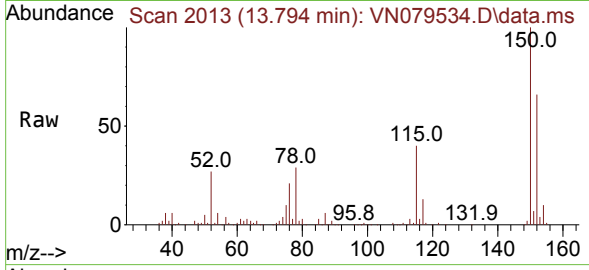
Tgt Ion:173 Resp: 1534
 Ion Ratio Lower Upper
 173 100
 175 604.0 24.3 73.0#
 254 0.0 0.0 0.0



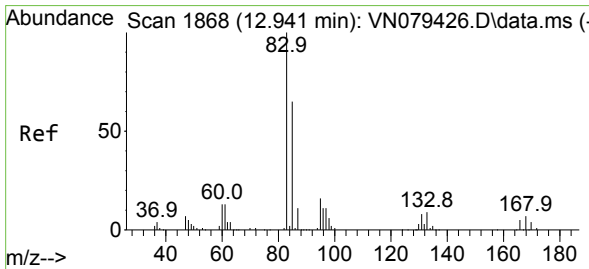
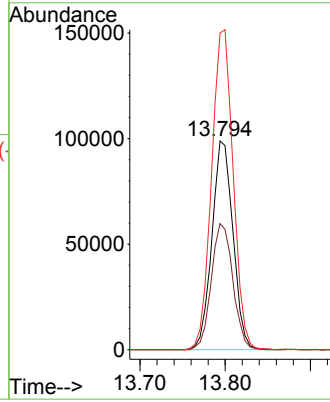
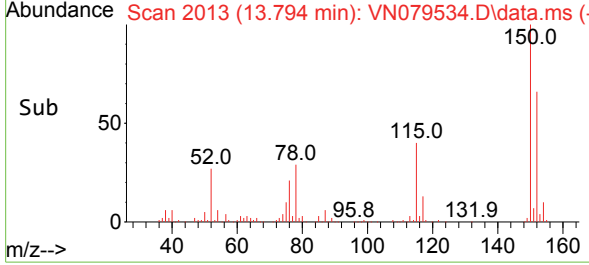


#72
 1,4-Dichlorobenzene-d4
 Concen: 50.000 ug/l
 RT: 13.794 min Scan# 20
 Delta R.T. 0.000 min
 Lab File: VN079534.D
 Acq: 11 Oct 2023 22:00

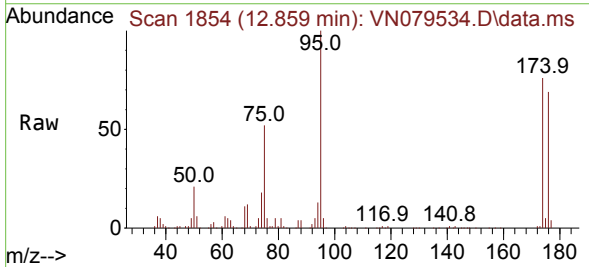
Instrument :
 MSVOA_N
 ClientSampleId :



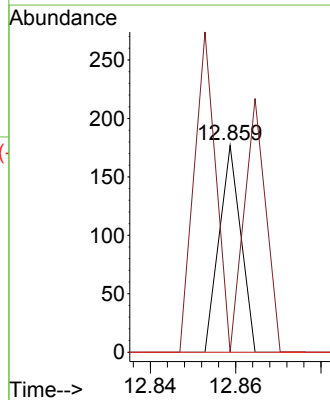
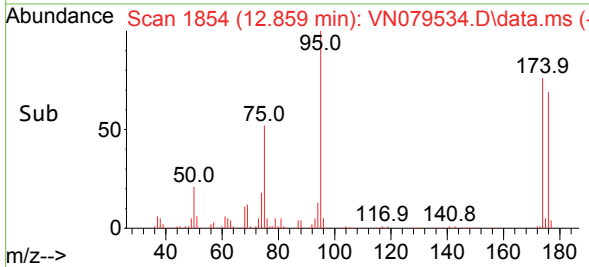
Tgt Ion:152 Resp: 170110
 Ion Ratio Lower Upper
 152 100
 115 61.7 32.3 96.8
 150 156.8 0.0 355.8

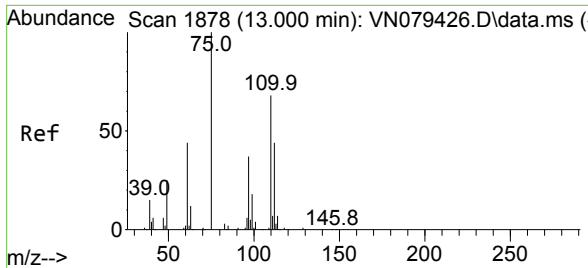


#75
 1,1,2,2-Tetrachloroethane
 Concen: Below Cal
 RT: 12.859 min Scan# 1854
 Delta R.T. -0.082 min
 Lab File: VN079534.D
 Acq: 11 Oct 2023 22:00



Tgt Ion: 83 Resp: 62
 Ion Ratio Lower Upper
 83 100
 131 279.0 5.0 15.0#
 85 0.0 31.9 95.7#

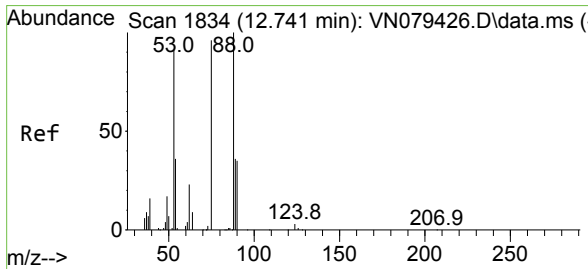
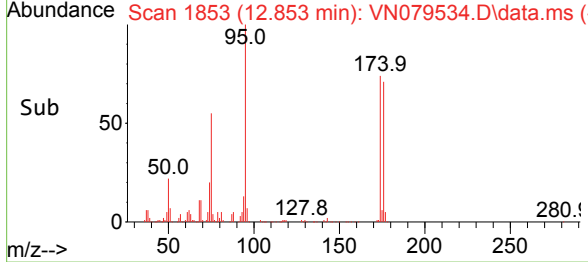
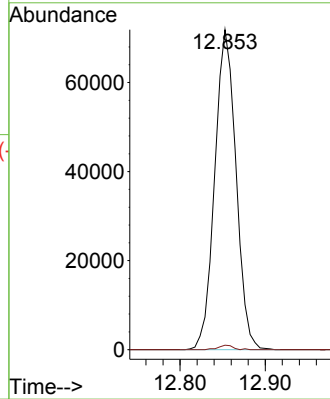
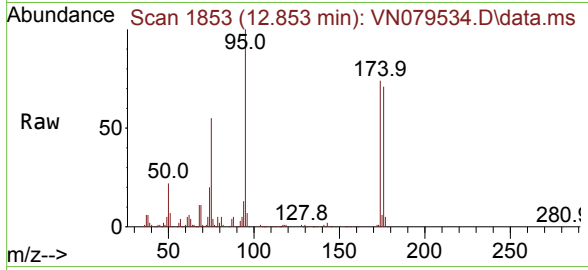




#76
 1,2,3-Trichloropropane
 Concen: 25.396 ug/l
 RT: 12.853 min Scan# 1853
 Delta R.T. -0.147 min
 Lab File: VN079534.D
 Acq: 11 Oct 2023 22:00

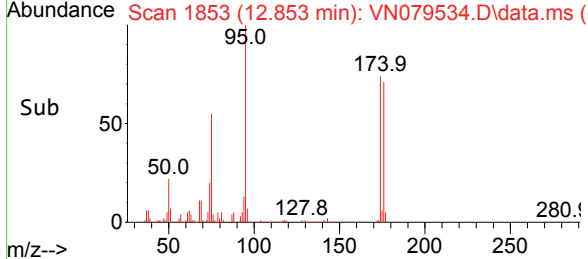
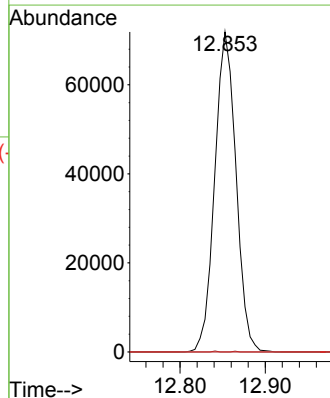
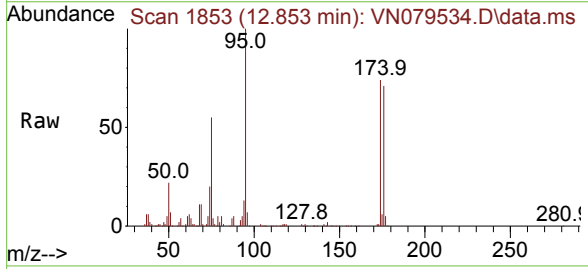
Instrument : MSVOA_N
 ClientSampleId :

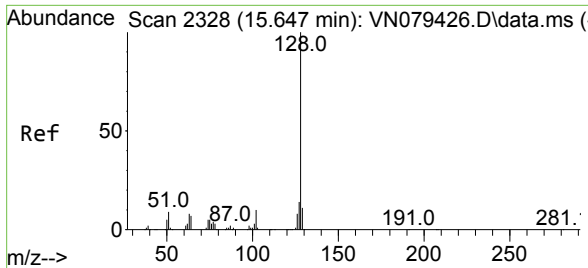
Tgt Ion: 75 Resp: 124559
 Ion Ratio Lower Upper
 75 100
 77 1.0 84.5 253.5#



#81
 trans-1,4-Dichloro-2-butene
 Concen: 73.687 ug/l
 RT: 12.853 min Scan# 1853
 Delta R.T. 0.112 min
 Lab File: VN079534.D
 Acq: 11 Oct 2023 22:00

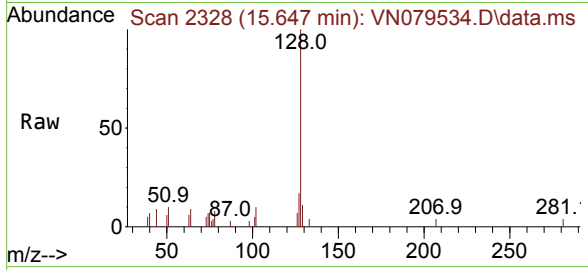
Tgt Ion: 75 Resp: 124559
 Ion Ratio Lower Upper
 75 100
 53 0.1 67.4 101.2#
 89 0.0 38.8 58.2#





#95
 Naphthalene
 Concen: 2.058 ug/l
 RT: 15.647 min Scan# 21
 Delta R.T. -0.000 min
 Lab File: VN079534.D
 Acq: 11 Oct 2023 22:00

Instrument :
 MSVOA_N
 ClientSampleId :



Tgt Ion:128 Resp: 11687

Ion	Ratio	Lower	Upper
128	100		
127	14.0	10.0	15.0
129	10.3	8.7	13.1

