

Data Path : Z:\voasrv\HPCHEM1\MSVOA_N\Data\VN101222\
 Data File : VN074877.D
 Acq On : 12 Oct 2022 15:42
 Operator : JC\MD
 Sample : IBLK
 Misc : 5.0mL/MSVOA_N/WATER
 ALS Vial : 13 Sample Multiplier: 1

Instrument :
 MSVOA_N
ClientSampleId :
 IBLK

Quant Time: Oct 13 07:56:25 2022
 Quant Method : Z:\voasrv\HPCHEM1\MSVOA_N\methods\624N101222W.M
 Quant Title : METHOD 624 VOLATILE ORGANIC ANALYSIS
 QLast Update : Thu Oct 13 07:52:24 2022
 Response via : Initial Calibration

Manual Integrations
APPROVED
 Reviewed By :John Carlone 10/13/2022
 Supervised By :Mahesh Dadoda 10/14/2022

Compound	R.T.	QIon	Response	Conc	Units	Dev(Min)
Internal Standards						
1) Bromochloromethane	7.824	128	67584	30.000	ug/l	0.00
28) 1,4-Difluorobenzene	0.000	114	0m	30.000	ug/l	-9.11
57) Chlorobenzene-d5	11.871	117	323548	30.000	ug/l	0.00
System Monitoring Compounds						
27) 1,2-Dichloroethane-d4	8.583	65	198089m	31.307	ug/l	0.00
Spiked Amount	30.000	Range 91 - 110	Recovery	=	104.367%	
60) 4-Bromofluorobenzene	12.853	95	139777	24.361	ug/l	0.00
Spiked Amount	30.000	Range 63 - 112	Recovery	=	81.200%	
63) Toluene-d8	10.571	98	573946	30.736	ug/l	0.00
Spiked Amount	30.000	Range 91 - 112	Recovery	=	102.467%	

Target Compounds Qvalue

(#) = qualifier out of range (m) = manual integration (+) = signals summed

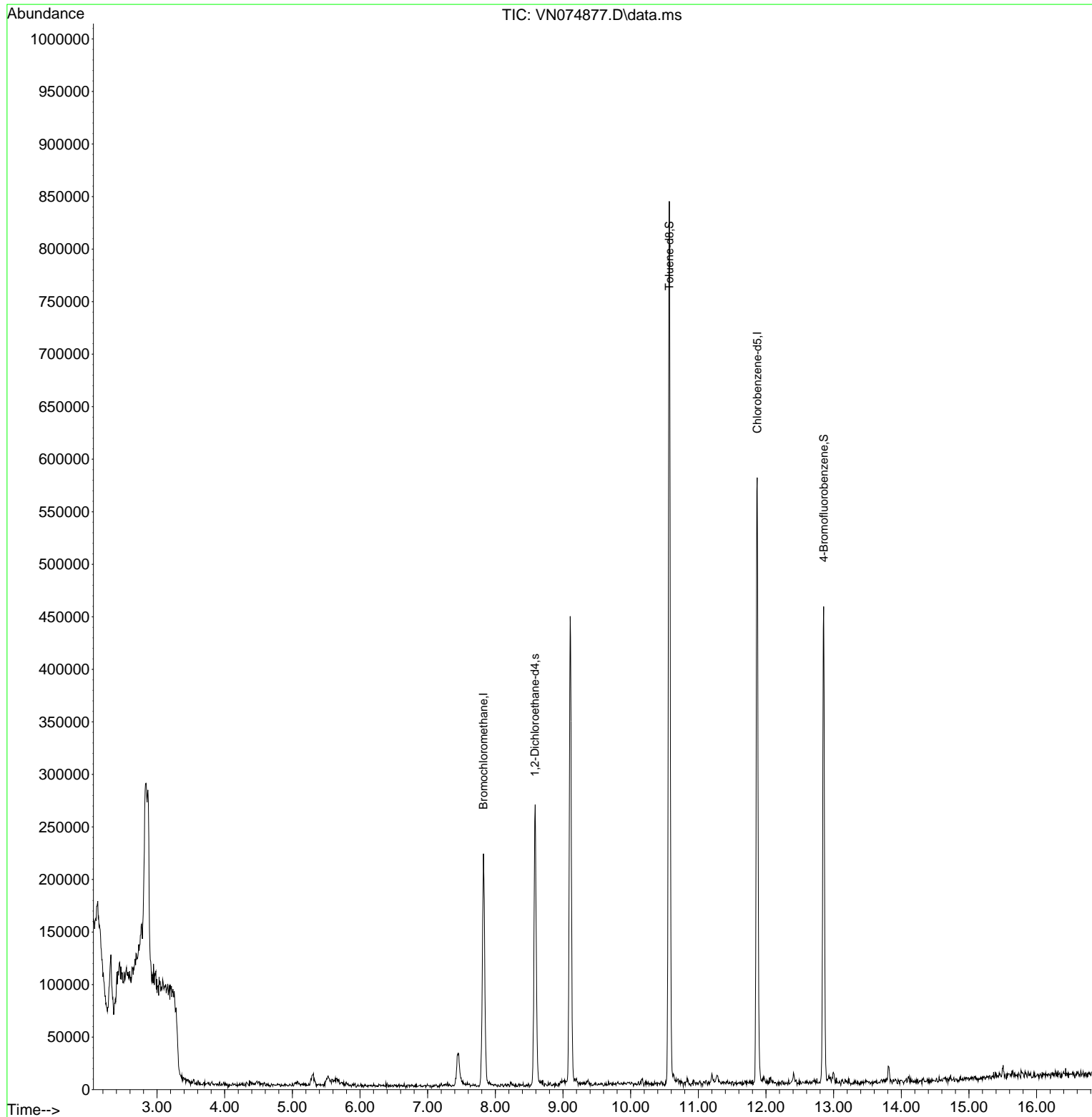
Data Path : Z:\voasrv\HPCHEM1\MSVOA_N\Data\VN101222\
 Data File : VN074877.D
 Acq On : 12 Oct 2022 15:42
 Operator : JC\MD
 Sample : IBLK
 Misc : 5.0mL/MSVOA_N/WATER
 ALS Vial : 13 Sample Multiplier: 1

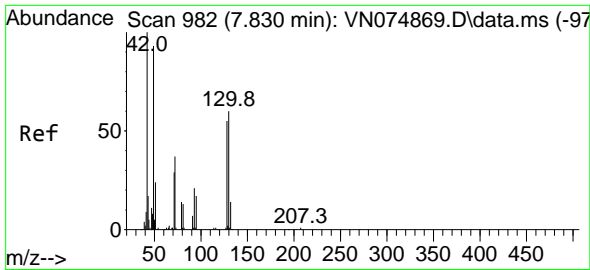
Instrument :
 MSVOA_N
 ClientSampleId :
 IBLK

Manual Integrations
APPROVED

Reviewed By :John Carlone 10/13/2022
 Supervised By :Mahesh Dadoda 10/14/2022

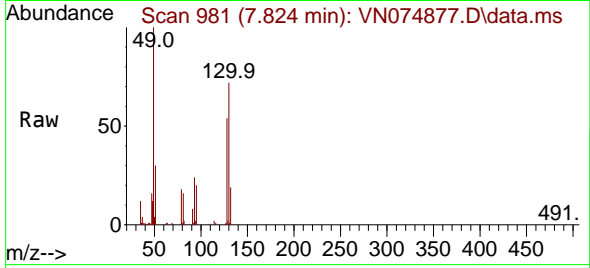
Quant Time: Oct 13 07:56:25 2022
 Quant Method : Z:\voasrv\HPCHEM1\MSVOA_N\methods\624N101222W.M
 Quant Title : METHOD 624 VOLATILE ORGANIC ANALYSIS
 QLast Update : Thu Oct 13 07:52:24 2022
 Response via : Initial Calibration





#1
 Bromochloromethane
 Concen: 30.000 ug/l
 RT: 7.824 min Scan# 91
 Delta R.T. -0.006 min
 Lab File: VN074877.D
 Acq: 12 Oct 2022 15:42

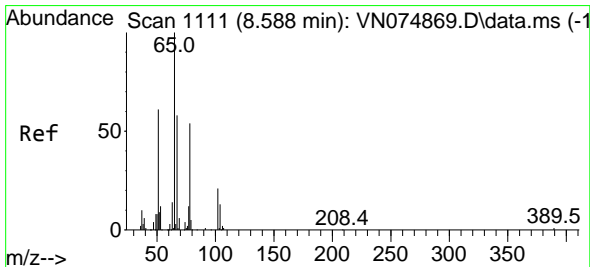
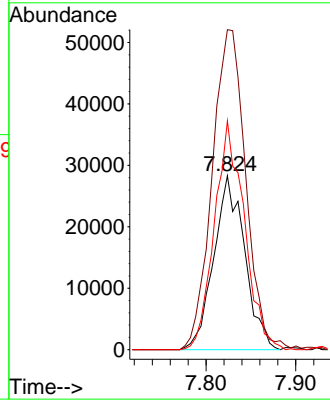
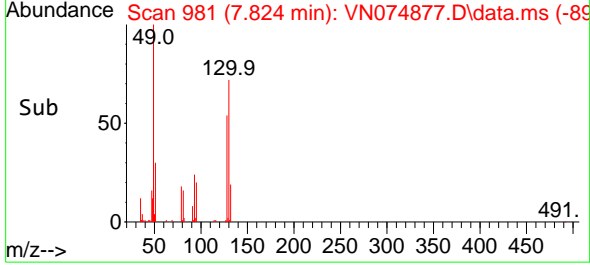
Instrument :
 MSVOA_N
 ClientSampleId :
 IBLK



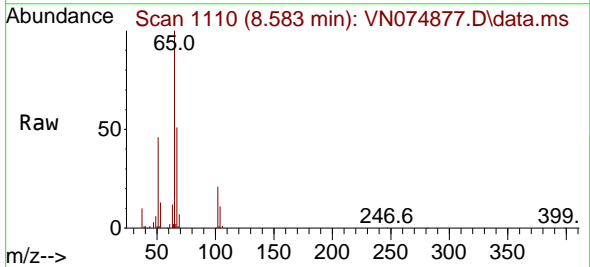
Tgt Ion:128 Resp: 67584
 Ion Ratio Lower Upper
 128 100
 49 198.9 0.0 492.0
 130 127.4 0.0 313.3

Manual Integrations
 APPROVED

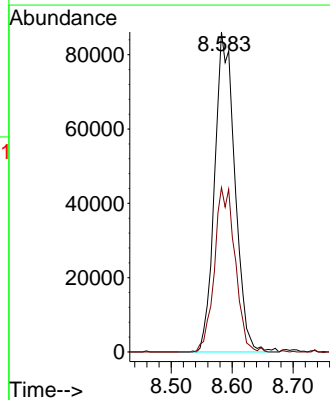
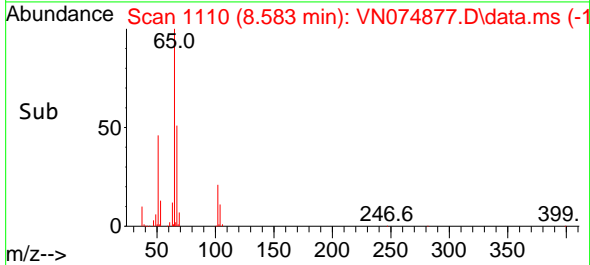
Reviewed By :John Carlone 10/13/2022
 Supervised By :Mahesh Dadoda 10/14/2022

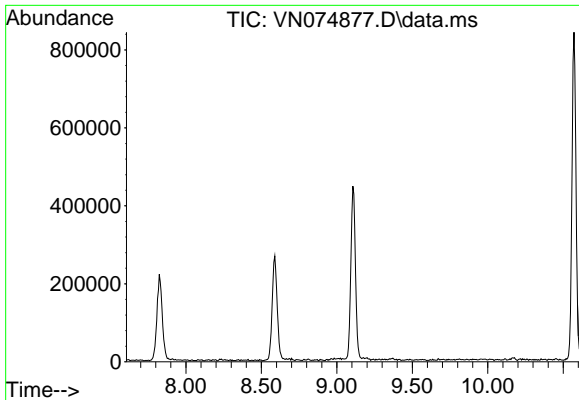


#27
 1,2-Dichloroethane-d4
 Concen: 31.307 ug/l m
 RT: 8.583 min Scan# 1110
 Delta R.T. -0.006 min
 Lab File: VN074877.D
 Acq: 12 Oct 2022 15:42



Tgt Ion: 65 Resp: 198089
 Ion Ratio Lower Upper
 65 100
 67 0.1 45.2 67.8#





#28
 1,4-Difluorobenzene
 Concen: 0.000 ug/l
 Expected RT: 9.11 min
 Lab File: VN074877.D
 Acq: 12 Oct 2022 15:42

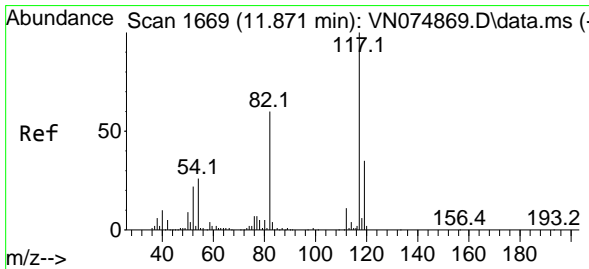
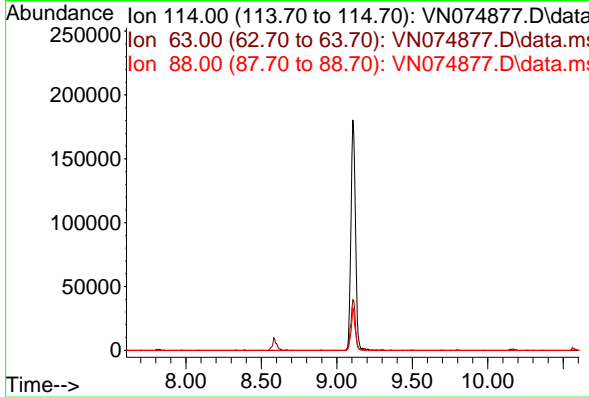
Instrument :
 MSVOA_N
ClientSampleId :
 IBLK

Tgt Ion: 114

Sig	Exp Ratio
114	100
63	20.8
88	15.3

Manual Integrations
APPROVED

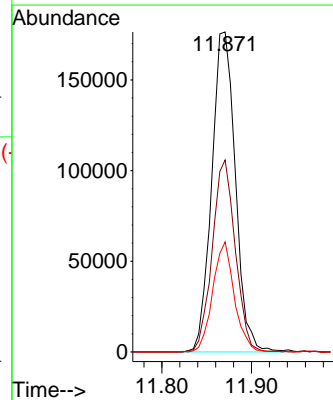
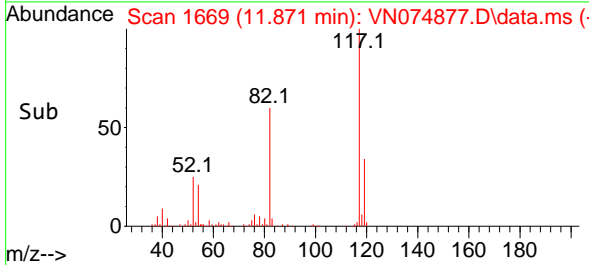
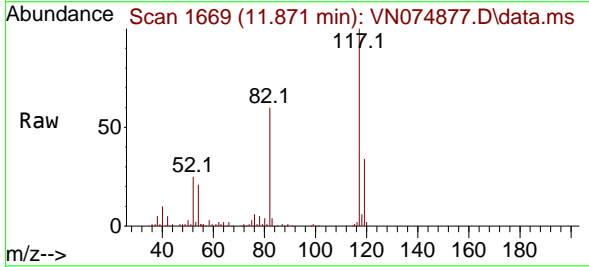
Reviewed By :John Carlone 10/13/2022
 Supervised By :Mahesh Dadoda 10/14/2022

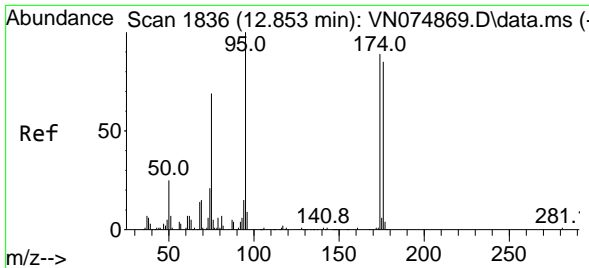


#57
 Chlorobenzene-d5
 Concen: 30.000 ug/l
 RT: 11.871 min Scan# 1669
 Delta R.T. -0.000 min
 Lab File: VN074877.D
 Acq: 12 Oct 2022 15:42

Tgt Ion:117 Resp: 323548

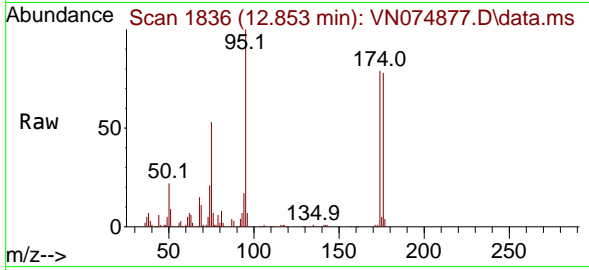
Ion	Ratio	Lower	Upper
117	100		
82	58.3	44.6	67.0
119	31.4	25.6	38.4





#60
 4-Bromofluorobenzene
 Concen: 24.361 ug/l
 RT: 12.853 min Scan# 1836
 Delta R.T. -0.000 min
 Lab File: VN074877.D
 Acq: 12 Oct 2022 15:42

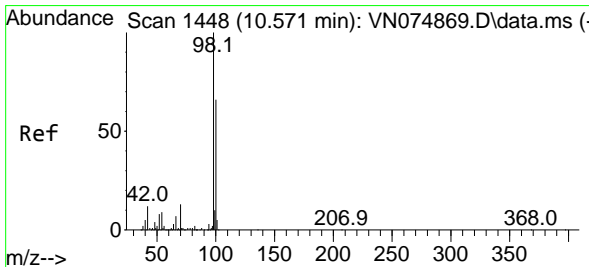
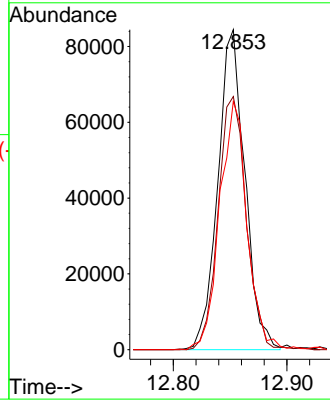
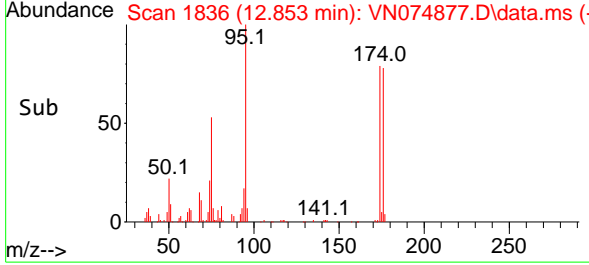
Instrument : MSVOA_N
 ClientSampleId : IBLK



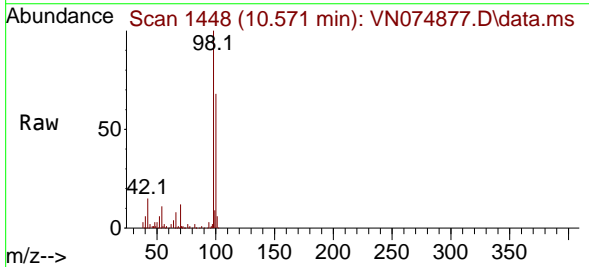
Tgt Ion: 95 Resp: 13977
 Ion Ratio Lower Upper
 95 100
 174 81.5 57.8 86.8
 176 78.4 57.0 85.4

Manual Integrations
 APPROVED

Reviewed By :John Carlone 10/13/2022
 Supervised By :Mahesh Dadoda 10/14/2022



#63
 Toluene-d8
 Concen: 30.736 ug/l
 RT: 10.571 min Scan# 1448
 Delta R.T. -0.000 min
 Lab File: VN074877.D
 Acq: 12 Oct 2022 15:42



Tgt Ion: 98 Resp: 573946
 Ion Ratio Lower Upper
 98 100
 100 64.4 52.7 79.1

