

Data Path : Z:\voasrv\HPCHEM1\MSVOA_N\Data\VN101223\
 Data File : VN079553.D
 Acq On : 12 Oct 2023 18:23
 Operator : JC\MD
 Sample : PB156319ZHE#04
 Misc : 5.0mL/MSVOA_N/WATER
 ALS Vial : 19 Sample Multiplier: 1

Instrument :
 MSVOA_N
 ClientSampleId :
 PB156319ZHE#04

Quant Time: Oct 13 01:24:02 2023
 Quant Method : Z:\voasrv\HPCHEM1\MSVOA_N\methods\82N100523W.M
 Quant Title : SW846 8260
 QLast Update : Fri Oct 06 03:34:49 2023
 Response via : Initial Calibration

Compound	R.T.	QIon	Response	Conc	Units	Dev(Min)

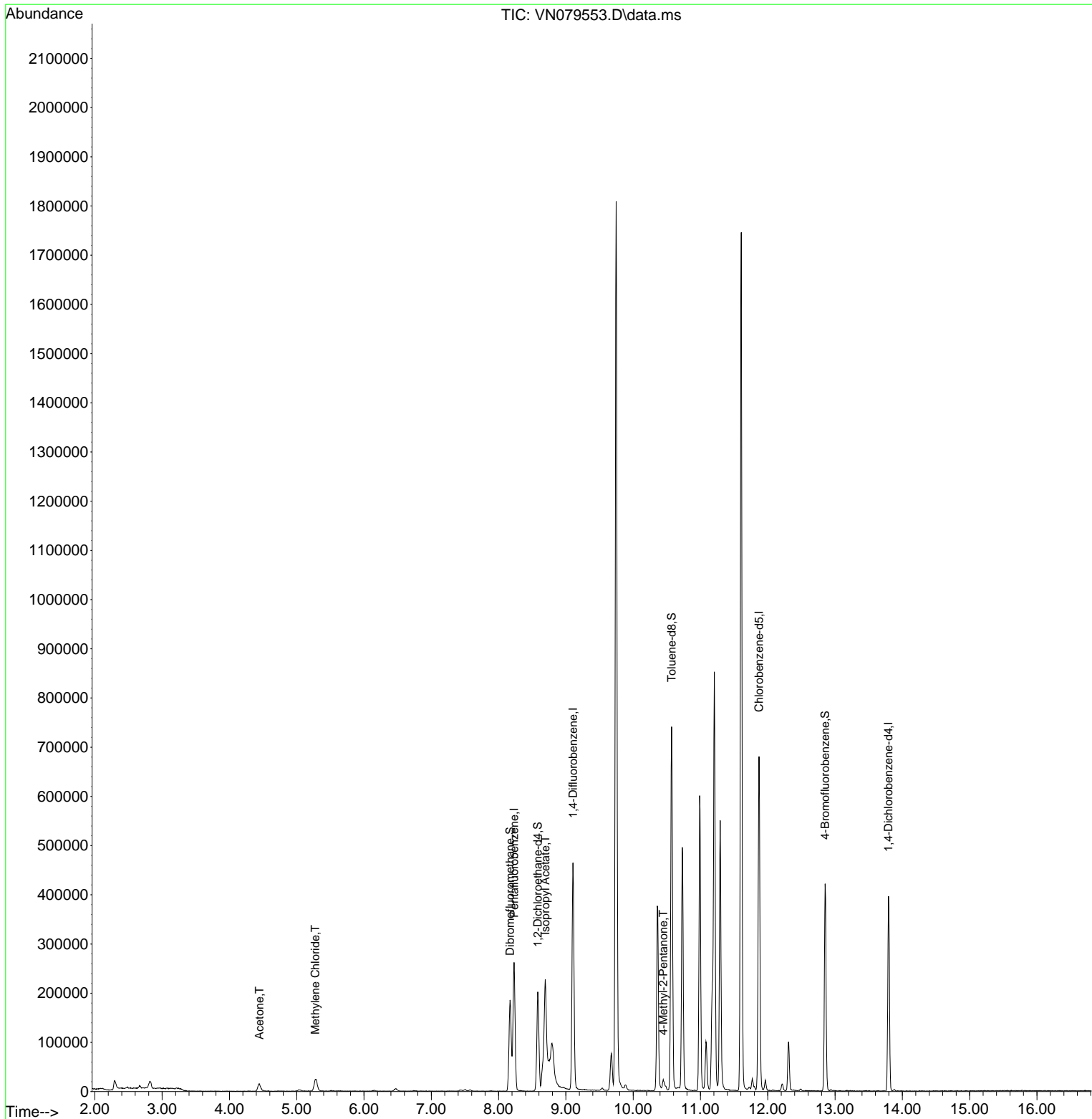
Internal Standards						
1) Pentafluorobenzene	8.229	168	178471	50.000	ug/l	0.00
34) 1,4-Difluorobenzene	9.106	114	379663	50.000	ug/l	0.00
63) Chlorobenzene-d5	11.870	117	379775	50.000	ug/l	0.00
72) 1,4-Dichlorobenzene-d4	13.794	152	105562	50.000	ug/l	0.00
System Monitoring Compounds						
33) 1,2-Dichloroethane-d4	8.582	65	159150	54.997	ug/l	0.00
Spiked Amount	50.000	Range	74 - 125	Recovery	=	110.000%
35) Dibromofluoromethane	8.171	113	132366	48.514	ug/l	0.00
Spiked Amount	50.000	Range	75 - 124	Recovery	=	97.020%
50) Toluene-d8	10.570	98	503616	51.014	ug/l	0.00
Spiked Amount	50.000	Range	86 - 113	Recovery	=	102.020%
62) 4-Bromofluorobenzene	12.853	95	140416	44.321	ug/l	0.00
Spiked Amount	50.000	Range	83 - 123	Recovery	=	88.640%
Target Compounds						
					Qvalue	
16) Acetone	4.447	43	30668	26.720	ug/l #	80
20) Methylene Chloride	5.277	84	20159	7.509	ug/l #	82
43) Isopropyl Acetate	8.694	43	305757	42.832	ug/l #	70
51) 4-Methyl-2-Pentanone	10.447	43	21682	5.381	ug/l #	65

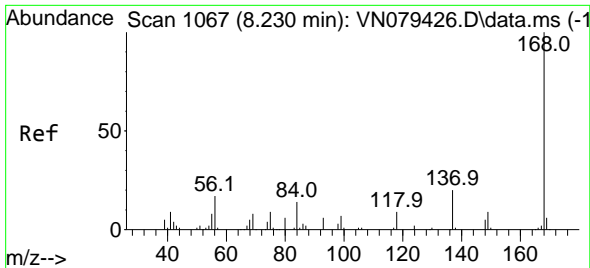
(#) = qualifier out of range (m) = manual integration (+) = signals summed

Data Path : Z:\voasrv\HPCHEM1\MSVOA_N\Data\VN101223\
Data File : VN079553.D
Acq On : 12 Oct 2023 18:23
Operator : JC\MD
Sample : PB156319ZHE#04
Misc : 5.0mL/MSVOA_N/WATER
ALS Vial : 19 Sample Multiplier: 1

Instrument :
MSVOA_N
ClientSampleId :
PB156319ZHE#04

Quant Time: Oct 13 01:24:02 2023
Quant Method : Z:\voasrv\HPCHEM1\MSVOA_N\methods\82N100523W.M
Quant Title : SW846 8260
QLast Update : Fri Oct 06 03:34:49 2023
Response via : Initial Calibration

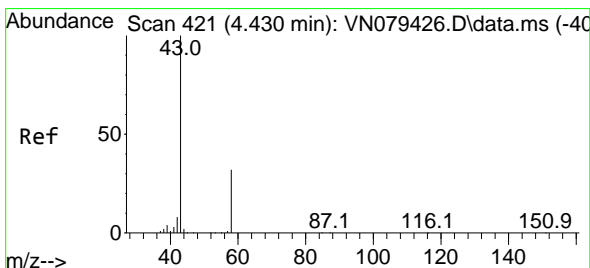
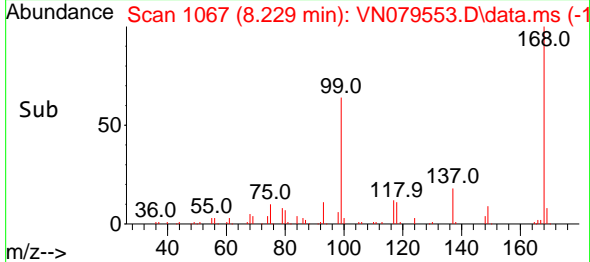
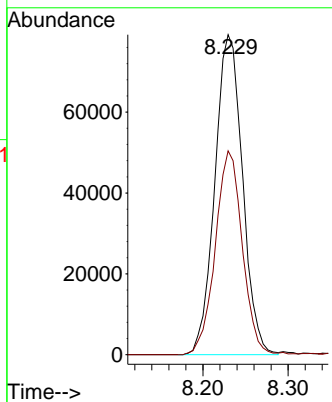
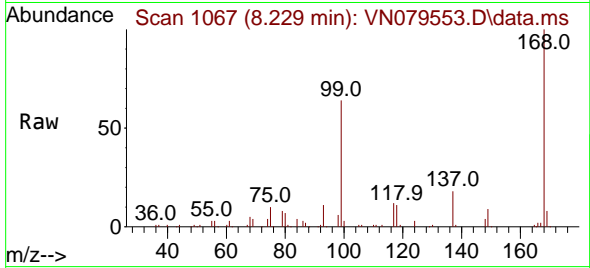




#1
 Pentafluorobenzene
 Concen: 50.000 ug/l
 RT: 8.229 min Scan# 1067
 Delta R.T. -0.001 min
 Lab File: VN079553.D
 Acq: 12 Oct 2023 18:23

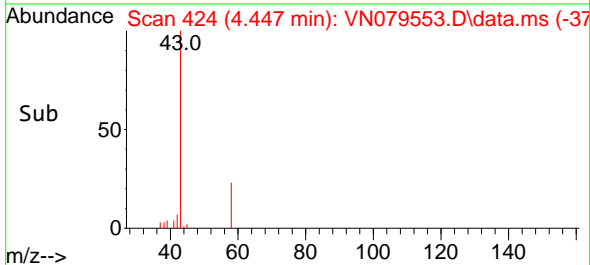
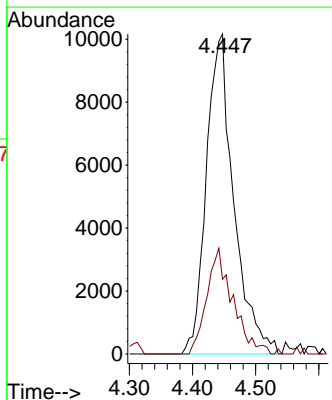
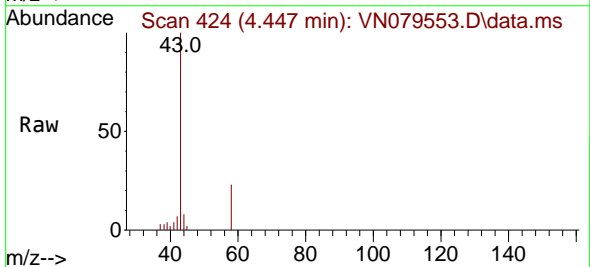
Instrument : MSVOA_N
 ClientSampleId : PB156319ZHE#04

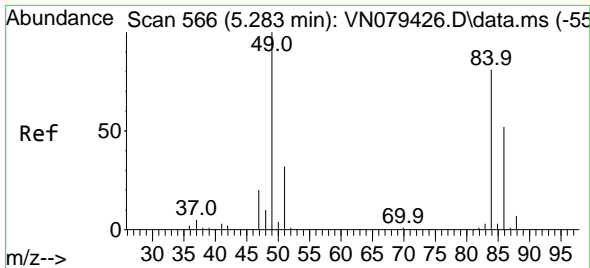
Tgt Ion:168 Resp: 178471
 Ion Ratio Lower Upper
 168 100
 99 63.7 53.0 79.6



#16
 Acetone
 Concen: 26.720 ug/l
 RT: 4.447 min Scan# 424
 Delta R.T. 0.017 min
 Lab File: VN079553.D
 Acq: 12 Oct 2023 18:23

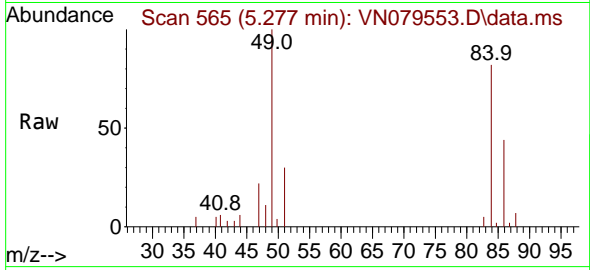
Tgt Ion: 43 Resp: 30668
 Ion Ratio Lower Upper
 43 100
 58 23.4 28.0 42.0#





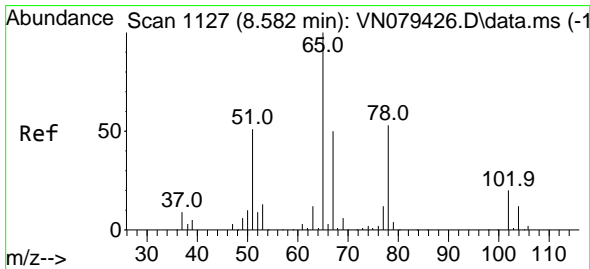
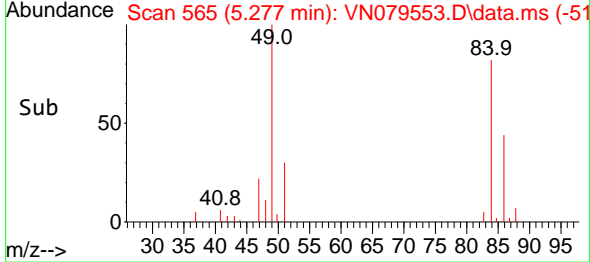
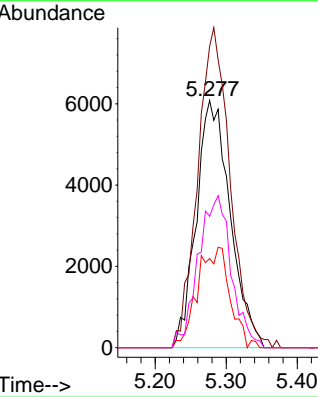
#20
 Methylene Chloride
 Concen: 7.509 ug/l
 RT: 5.277 min Scan# 50
 Delta R.T. -0.006 min
 Lab File: VN079553.D
 Acq: 12 Oct 2023 18:23

Instrument : MSVOA_N
 ClientSampleId : PB156319ZHE#04



Tgt Ion: 84 Resp: 20159

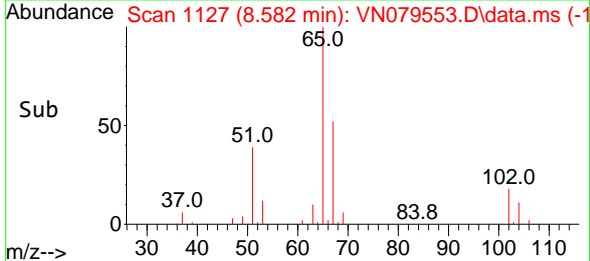
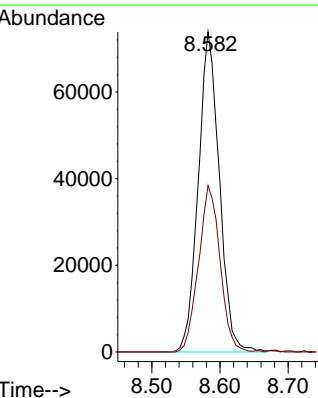
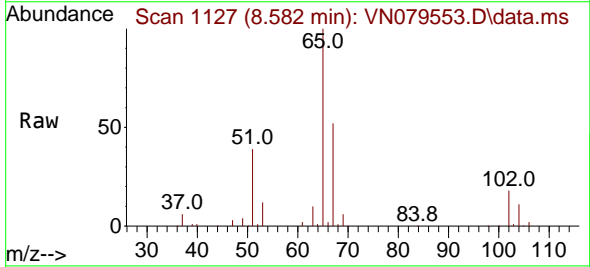
Ion	Ratio	Lower	Upper
84	100		
49	121.9	79.7	119.5#
51	36.0	25.2	37.8
86	53.1	53.3	79.9#

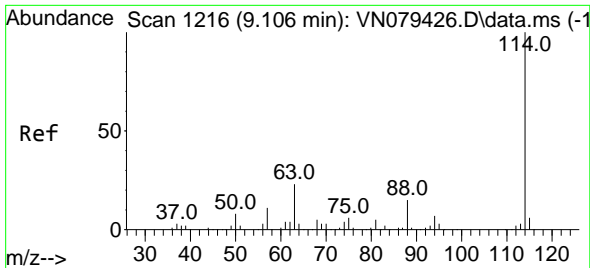


#33
 1,2-Dichloroethane-d4
 Concen: 54.997 ug/l
 RT: 8.582 min Scan# 1127
 Delta R.T. -0.000 min
 Lab File: VN079553.D
 Acq: 12 Oct 2023 18:23

Tgt Ion: 65 Resp: 159150

Ion	Ratio	Lower	Upper
65	100		
67	52.9	0.0	106.6



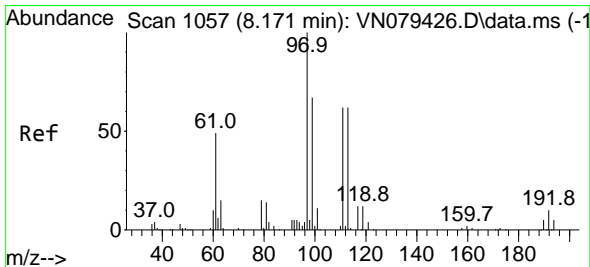
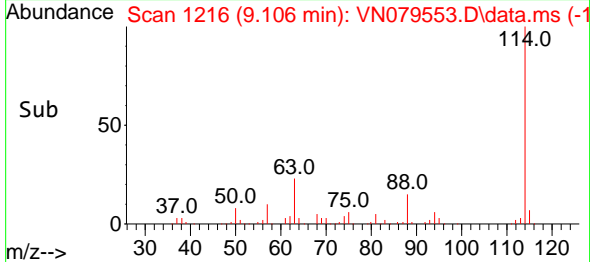
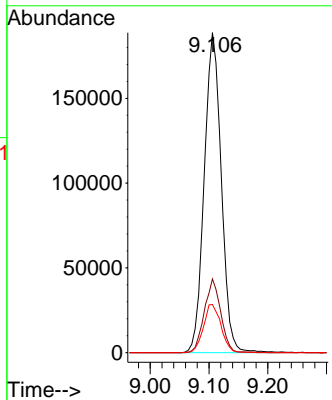
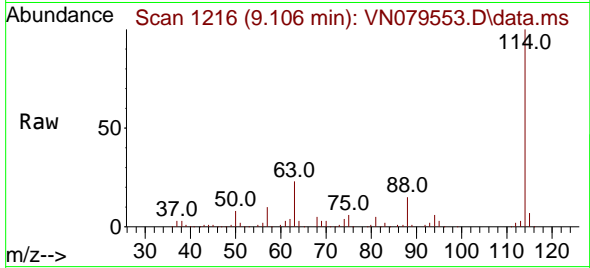


#34
 1,4-Difluorobenzene
 Concen: 50.000 ug/l
 RT: 9.106 min Scan# 11
 Delta R.T. -0.000 min
 Lab File: VN079553.D
 Acq: 12 Oct 2023 18:23

Instrument : MSVOA_N
 ClientSampleId : PB156319ZHE#04

Tgt Ion:114 Resp: 379663

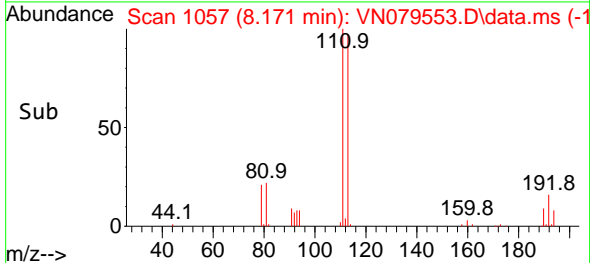
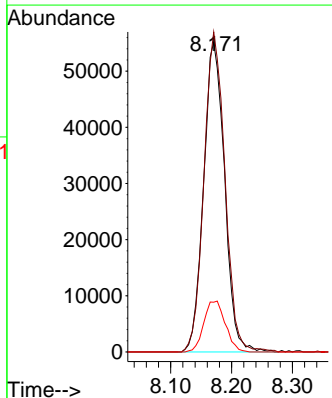
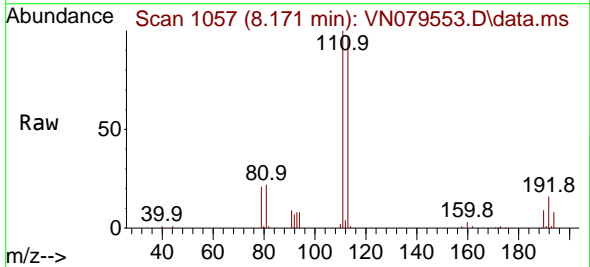
Ion	Ratio	Lower	Upper
114	100		
63	23.0	0.0	36.4
88	15.0	0.0	30.6

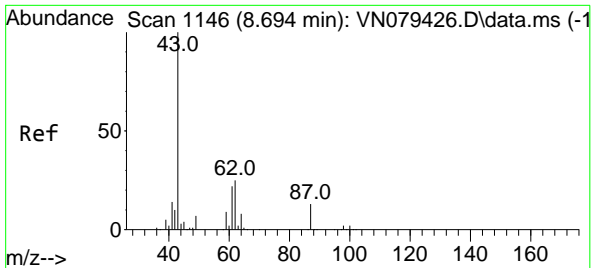


#35
 Dibromofluoromethane
 Concen: 48.514 ug/l
 RT: 8.171 min Scan# 1057
 Delta R.T. -0.000 min
 Lab File: VN079553.D
 Acq: 12 Oct 2023 18:23

Tgt Ion:113 Resp: 132366

Ion	Ratio	Lower	Upper
113	100		
111	103.4	82.6	123.8
192	16.8	12.7	19.1



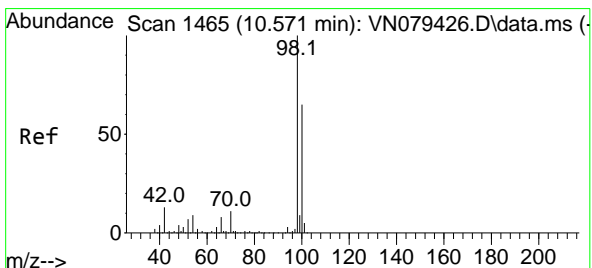
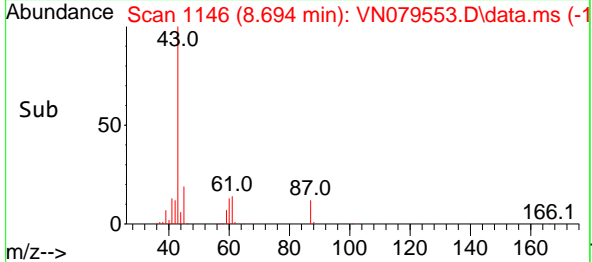
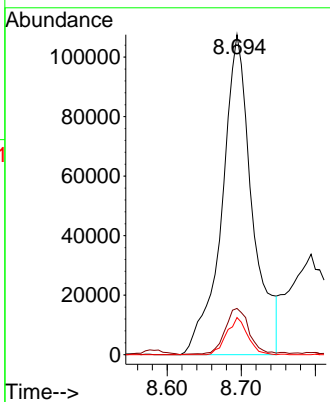
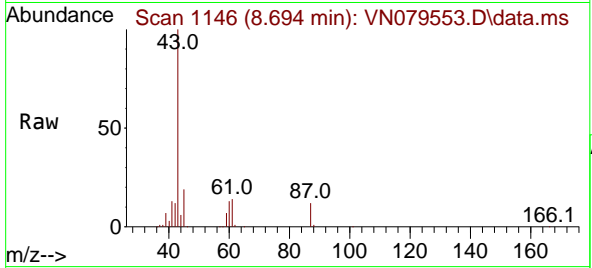


#43
 Isopropyl Acetate
 Concen: 42.832 ug/l
 RT: 8.694 min Scan# 1146
 Delta R.T. -0.000 min
 Lab File: VN079553.D
 Acq: 12 Oct 2023 18:23

Instrument : MSVOA_N
 ClientSampleId : PB156319ZHE#04

Tgt Ion: 43 Resp: 305757

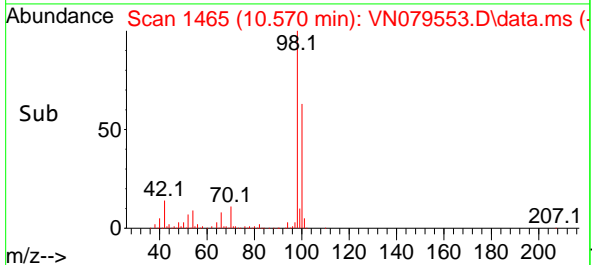
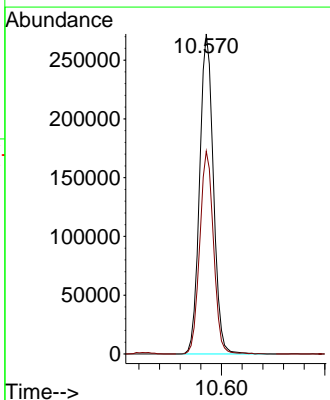
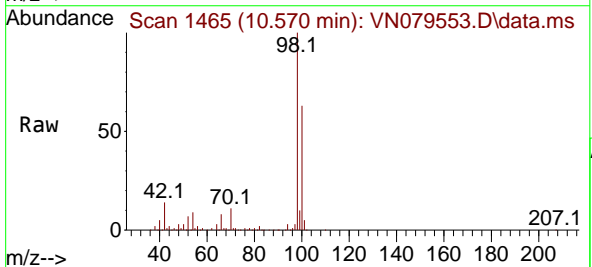
Ion	Ratio	Lower	Upper
43	100		
61	11.9	24.7	37.1#
87	8.0	14.6	21.8#

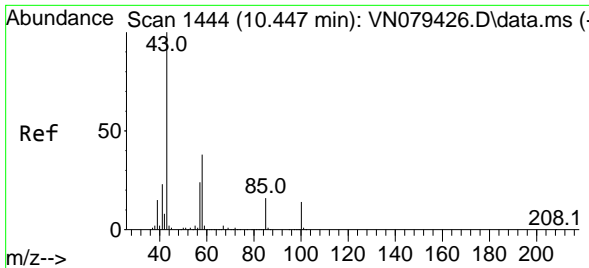


#50
 Toluene-d8
 Concen: 51.014 ug/l
 RT: 10.570 min Scan# 1465
 Delta R.T. -0.000 min
 Lab File: VN079553.D
 Acq: 12 Oct 2023 18:23

Tgt Ion: 98 Resp: 503616

Ion	Ratio	Lower	Upper
98	100		
100	63.4	52.0	78.0

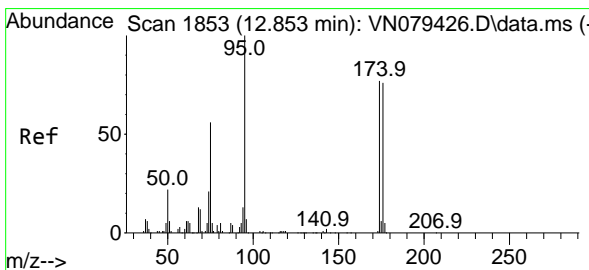
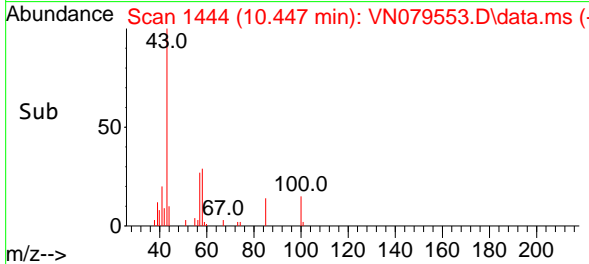
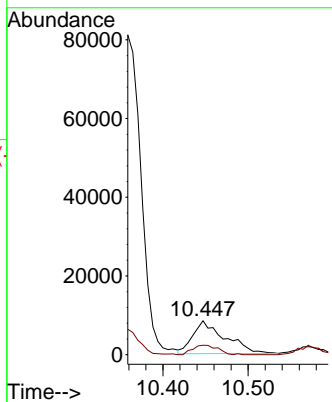
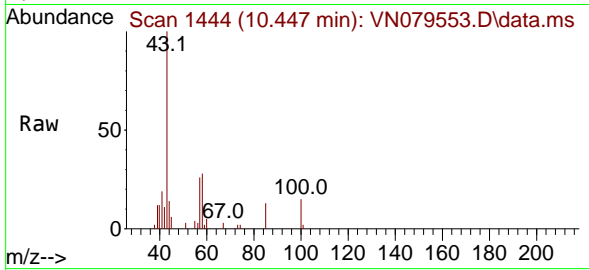




#51
 4-Methyl-2-Pentanone
 Concen: 5.381 ug/l
 RT: 10.447 min Scan# 1444
 Delta R.T. -0.000 min
 Lab File: VN079553.D
 Acq: 12 Oct 2023 18:23

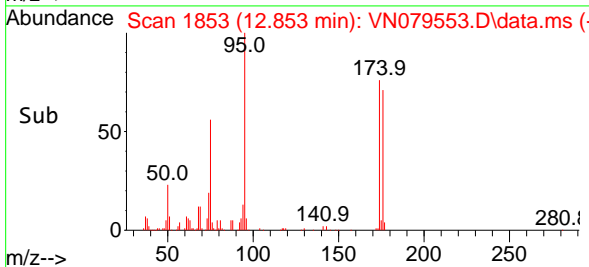
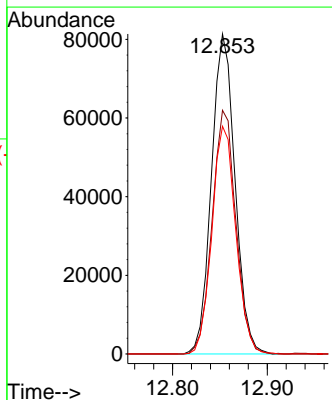
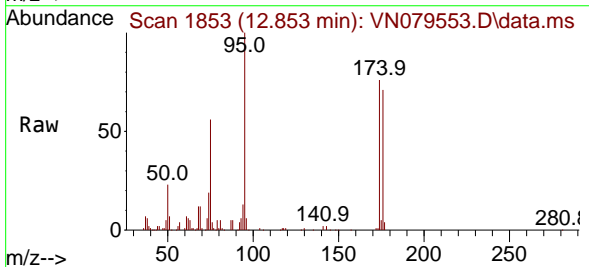
Instrument : MSVOA_N
 ClientSampleId : PB156319ZHE#04

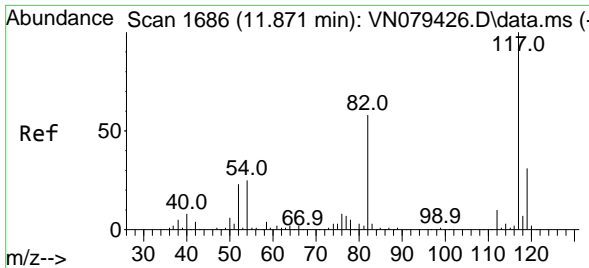
Tgt Ion: 43 Resp: 21682
 Ion Ratio Lower Upper
 43 100
 58 22.6 36.6 54.8#



#62
 4-Bromofluorobenzene
 Concen: 44.321 ug/l
 RT: 12.853 min Scan# 1853
 Delta R.T. -0.000 min
 Lab File: VN079553.D
 Acq: 12 Oct 2023 18:23

Tgt Ion: 95 Resp: 140416
 Ion Ratio Lower Upper
 95 100
 174 76.9 0.0 143.8
 176 72.4 0.0 135.8



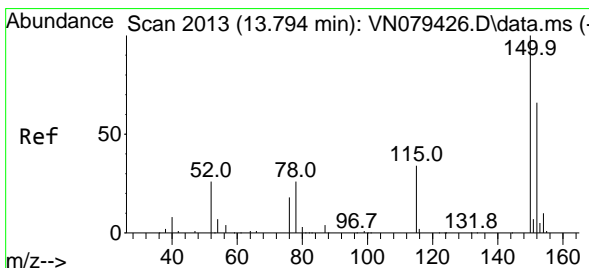
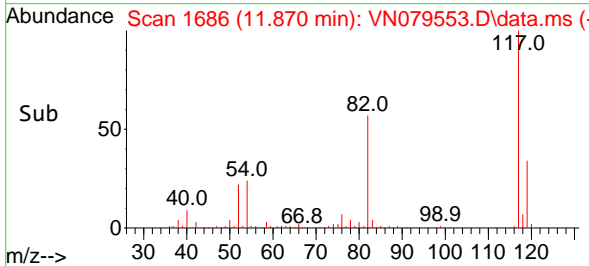
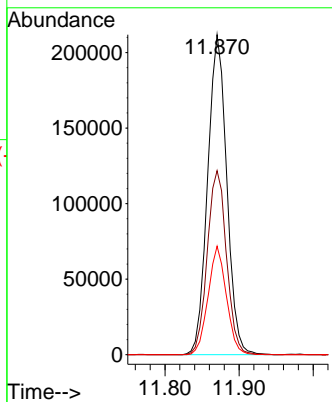
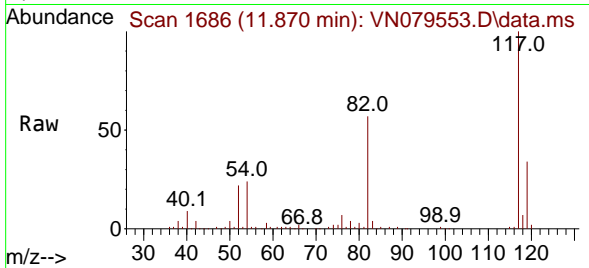


#63
 Chlorobenzene-d5
 Concen: 50.000 ug/l
 RT: 11.870 min Scan# 11
 Delta R.T. -0.000 min
 Lab File: VN079553.D
 Acq: 12 Oct 2023 18:23

Instrument : MSVOA_N
 ClientSampleId : PB156319ZHE#04

Tgt Ion:117 Resp: 379775

Ion	Ratio	Lower	Upper
117	100		
82	57.5	44.0	66.0
119	33.9	25.6	38.4



#72
 1,4-Dichlorobenzene-d4
 Concen: 50.000 ug/l
 RT: 13.794 min Scan# 2013
 Delta R.T. -0.000 min
 Lab File: VN079553.D
 Acq: 12 Oct 2023 18:23

Tgt Ion:152 Resp: 105562

Ion	Ratio	Lower	Upper
152	100		
115	59.2	32.3	96.8
150	155.2	0.0	355.8

