

Data Path : Z:\voasrv\HPCHEM1\MSVOA\_N\Data\VN101321\  
 Data File : VN068896.D  
 Acq On : 13 Oct 2021 14:32  
 Operator : JC/MD  
 Sample : M4188-01  
 Misc : 5.00mL/MSVOA\_N/WATER  
 ALS Vial : 10 Sample Multiplier: 1

Instrument :  
 MSVOA\_N  
 ClientSampleId :  
 PP-PROCESS-BLEED

Quant Time: Oct 14 06:41:58 2021  
 Quant Method : Z:\voasrv\HPCHEM1\MSVOA\_N\methods\82N101221W.M  
 Quant Title : SW846 8260  
 QLast Update : Wed Oct 13 05:44:40 2021  
 Response via : Initial Calibration

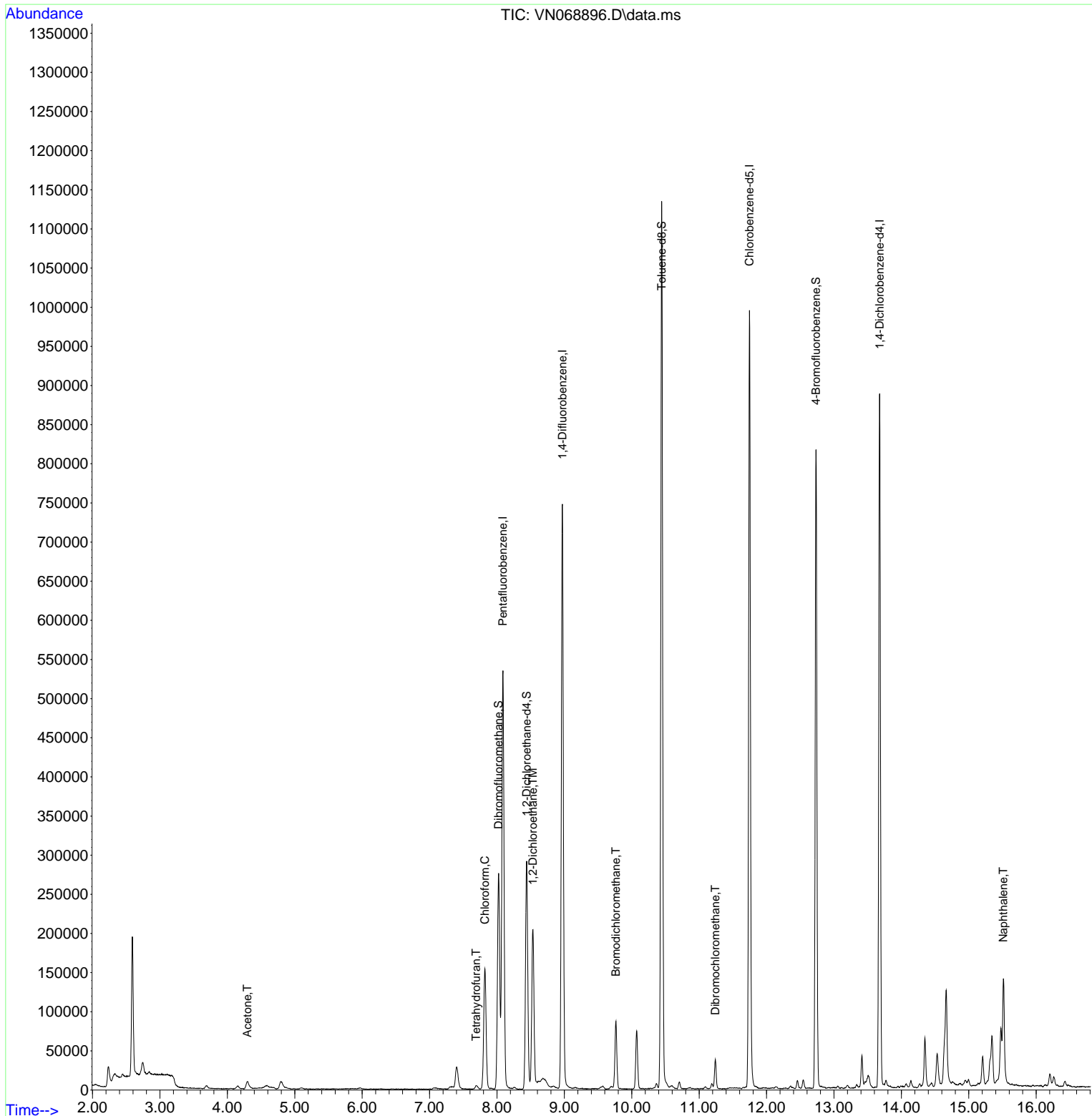
Compound	R.T.	QIon	Response	Conc	Units	Dev(Min)
-----						
Internal Standards						
1) Pentafluorobenzene	8.088	168	417222	50.00	ug/l	0.00
34) 1,4-Difluorobenzene	8.971	114	677646	50.00	ug/l	0.00
63) Chlorobenzene-d5	11.746	117	601895	50.00	ug/l	0.00
72) 1,4-Dichlorobenzene-d4	13.677	152	242117	50.00	ug/l	0.00
System Monitoring Compounds						
33) 1,2-Dichloroethane-d4	8.440	65	242519	44.09	ug/l	0.00
Spiked Amount	50.000	Range 61 - 141	Recovery =	88.18%		
35) Dibromofluoromethane	8.024	113	203036	51.50	ug/l	0.00
Spiked Amount	50.000	Range 69 - 133	Recovery =	103.00%		
50) Toluene-d8	10.443	98	813892	51.59	ug/l	0.00
Spiked Amount	50.000	Range 65 - 126	Recovery =	103.18%		
62) 4-Bromofluorobenzene	12.733	95	292509	49.15	ug/l	0.00
Spiked Amount	50.000	Range 58 - 135	Recovery =	98.30%		
Target Compounds						
						Qvalue
16) Acetone	4.296	43	16436	8.01	ug/l	97
29) Tetrahydrofuran	7.689	42	4054	2.01	ug/l	93
30) Chloroform	7.820	83	154199	17.92	ug/l	98
42) 1,2-Dichloroethane	8.533	62	196511	31.49	ug/l	98
47) Bromodichloromethane	9.764	83	59410	9.18	ug/l	100
60) Dibromochloromethane	11.239	129	20431	4.05	ug/l	95
95) Naphthalene	15.509	128	3563	4.10	ug/l #	94
-----						

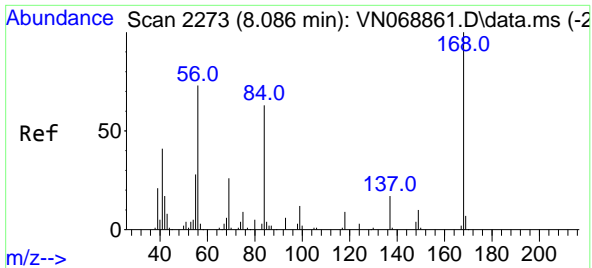
(#) = qualifier out of range (m) = manual integration (+) = signals summed

Data Path : Z:\voasrv\HPCHEM1\MSVOA\_N\Data\VN101321\  
 Data File : VN068896.D  
 Acq On : 13 Oct 2021 14:32  
 Operator : JC/MD  
 Sample : M4188-01  
 Misc : 5.00mL/MSVOA\_N/WATER  
 ALS Vial : 10 Sample Multiplier: 1

**Instrument :**  
 MSVOA\_N  
**ClientSampled :**  
 PP-PROCESS-BLEED

Quant Time: Oct 14 06:41:58 2021  
 Quant Method : Z:\voasrv\HPCHEM1\MSVOA\_N\methods\82N101221W.M  
 Quant Title : SW846 8260  
 QLast Update : Wed Oct 13 05:44:40 2021  
 Response via : Initial Calibration

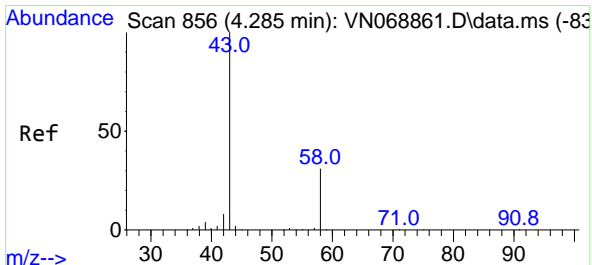
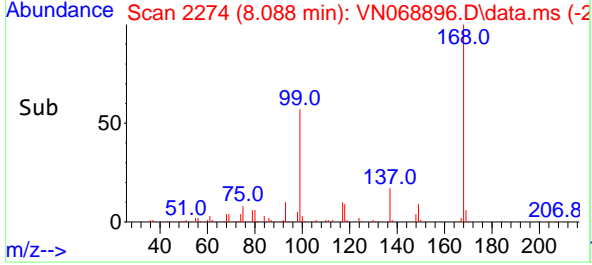
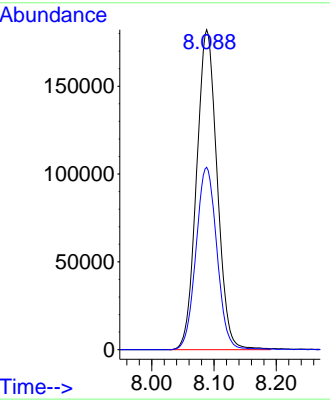
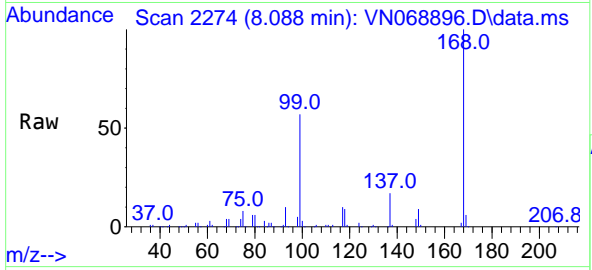




#1  
 Pentafluorobenzene  
 Concen: 50.00 ug/l  
 RT: 8.088 min Scan# 2274  
 Delta R.T. 0.002 min  
 Lab File: VN068896.D  
 Acq: 13 Oct 2021 14:32

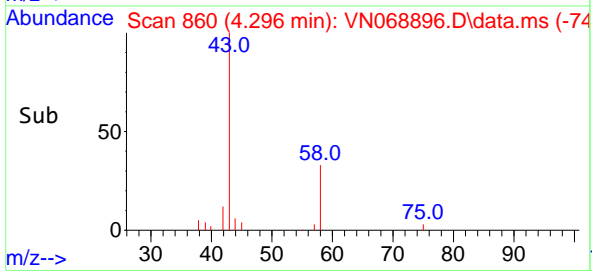
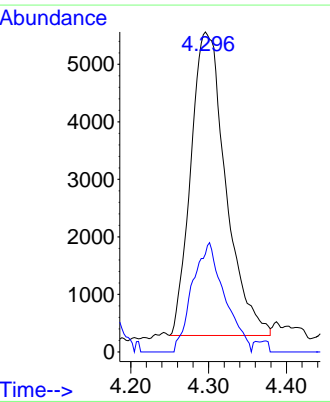
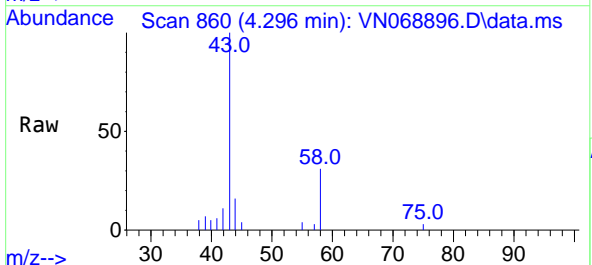
**Instrument :**  
 MSVOA\_N  
**ClientSampled :**  
 PP-PROCESS-BLEED

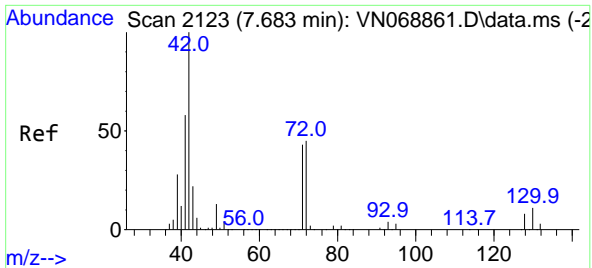
Tgt Ion:168 Resp: 417222  
 Ion Ratio Lower Upper  
 168 100  
 99 57.0 48.9 73.3



#16  
 Acetone  
 Concen: 8.01 ug/l  
 RT: 4.296 min Scan# 860  
 Delta R.T. 0.011 min  
 Lab File: VN068896.D  
 Acq: 13 Oct 2021 14:32

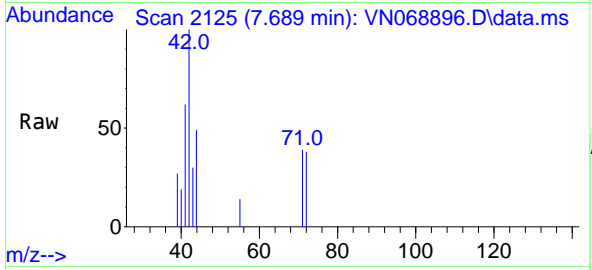
Tgt Ion: 43 Resp: 16436  
 Ion Ratio Lower Upper  
 43 100  
 58 32.3 24.5 36.7





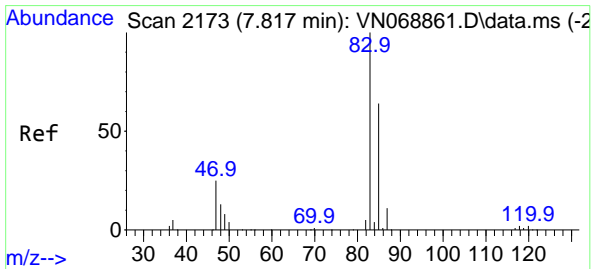
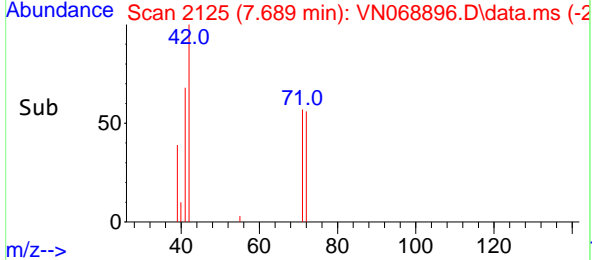
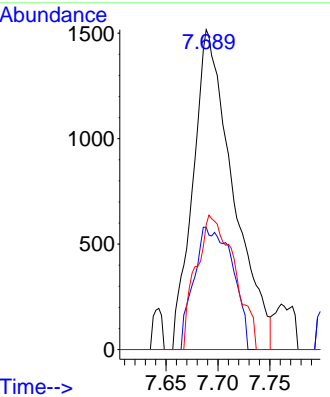
#29  
 Tetrahydrofuran  
 Concen: 2.01 ug/l  
 RT: 7.689 min Scan# 2125  
 Delta R.T. 0.005 min  
 Lab File: VN068896.D  
 Acq: 13 Oct 2021 14:32

**Instrument :**  
 MSVOA\_N  
**ClientSampled :**  
 PP-PROCESS-BLEED



Tgt Ion: 42 Resp: 4054

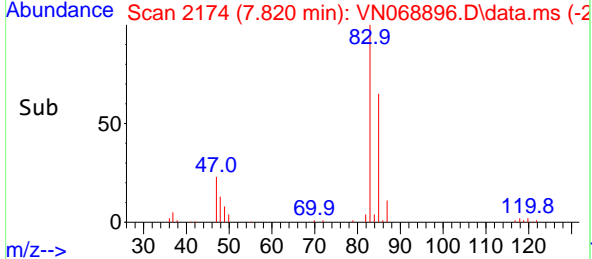
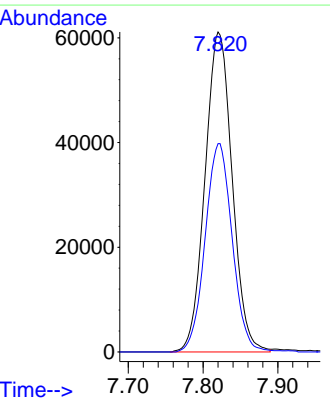
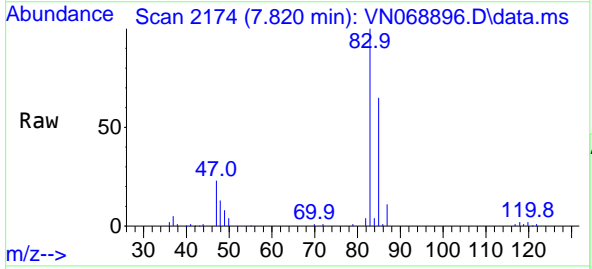
Ion	Ratio	Lower	Upper
42	100		
72	36.8	35.4	53.2
71	40.3	33.8	50.6

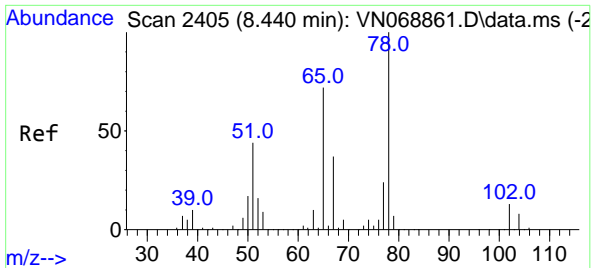


#30  
 Chloroform  
 Concen: 17.92 ug/l  
 RT: 7.820 min Scan# 2174  
 Delta R.T. 0.003 min  
 Lab File: VN068896.D  
 Acq: 13 Oct 2021 14:32

Tgt Ion: 83 Resp: 154199

Ion	Ratio	Lower	Upper
83	100		
85	65.1	51.1	76.7

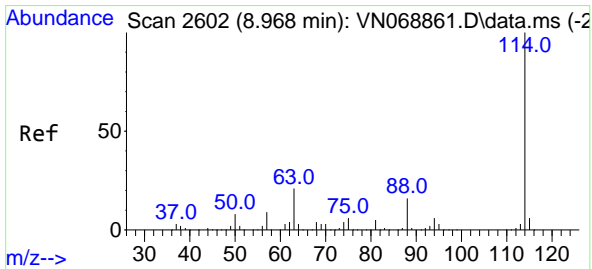
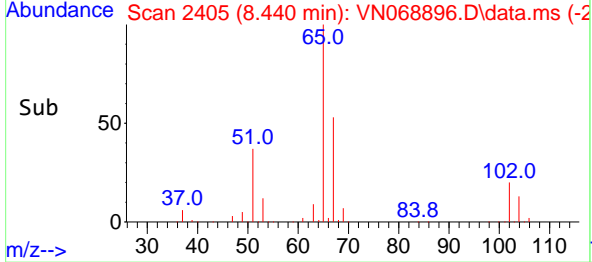
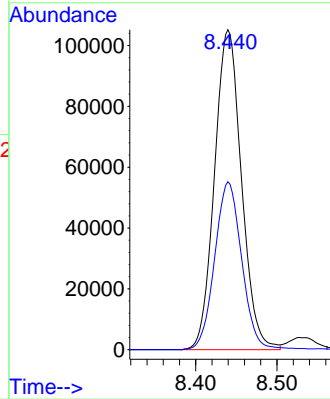
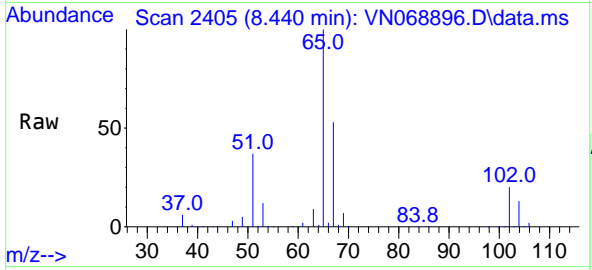




#33  
 1,2-Dichloroethane-d4  
 Concen: 44.09 ug/l  
 RT: 8.440 min Scan# 2405  
 Delta R.T. -0.000 min  
 Lab File: VN068896.D  
 Acq: 13 Oct 2021 14:32

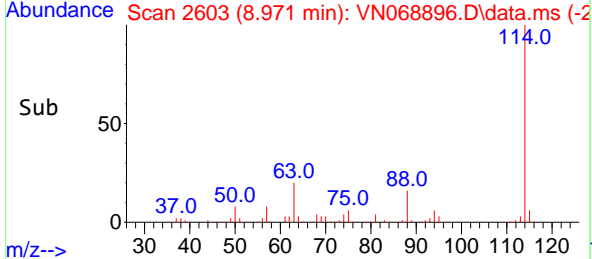
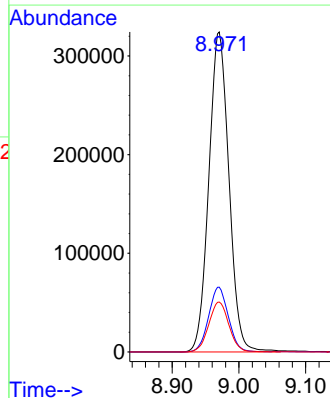
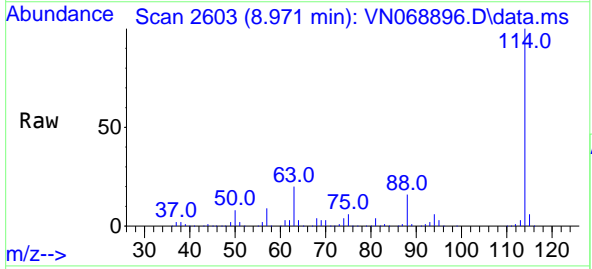
Instrument :  
 MSVOA\_N  
 ClientSampled :  
 PP-PROCESS-BLEED

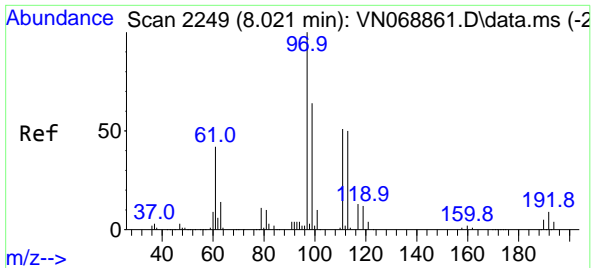
Tgt Ion: 65 Resp: 242519  
 Ion Ratio Lower Upper  
 65 100  
 67 52.7 0.0 103.8



#34  
 1,4-Difluorobenzene  
 Concen: 50.00 ug/l  
 RT: 8.971 min Scan# 2603  
 Delta R.T. 0.003 min  
 Lab File: VN068896.D  
 Acq: 13 Oct 2021 14:32

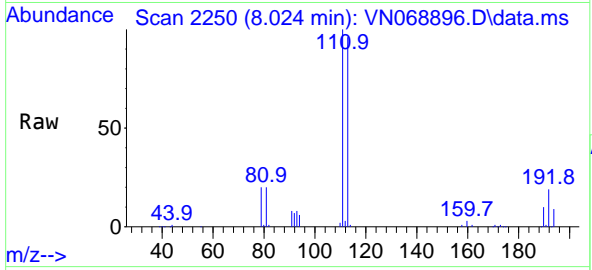
Tgt Ion: 114 Resp: 677646  
 Ion Ratio Lower Upper  
 114 100  
 63 20.3 0.0 42.6  
 88 15.6 0.0 32.0



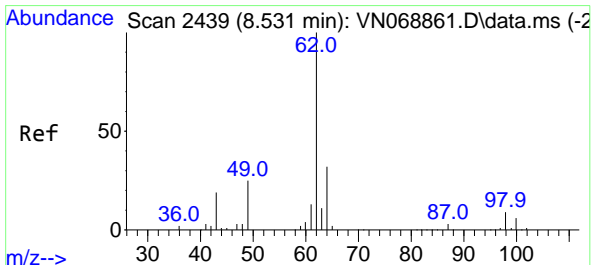
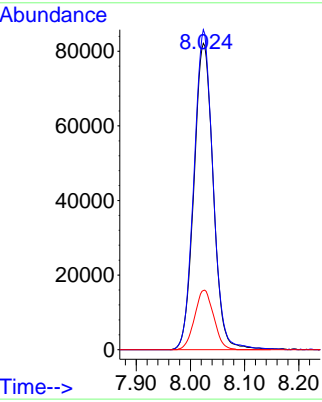
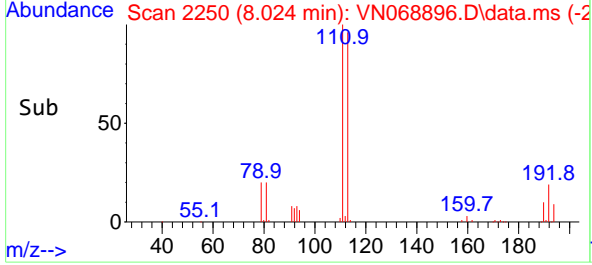


#35  
 Dibromofluoromethane  
 Concen: 51.50 ug/l  
 RT: 8.024 min Scan# 2250  
 Delta R.T. 0.003 min  
 Lab File: VN068896.D  
 Acq: 13 Oct 2021 14:32

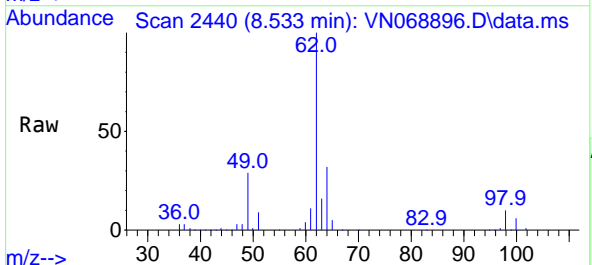
**Instrument :**  
 MSVOA\_N  
**ClientSampled :**  
 PP-PROCESS-BLEED



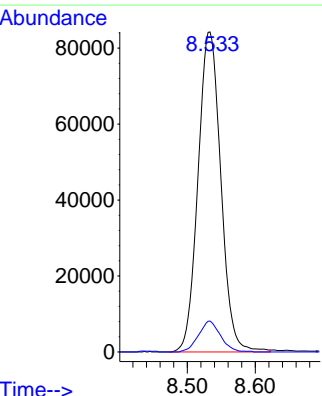
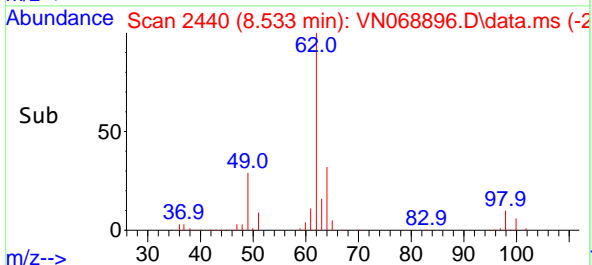
Tgt Ion:113 Resp: 203036  
 Ion Ratio Lower Upper  
 113 100  
 111 103.0 83.2 124.8  
 192 19.2 15.0 22.4

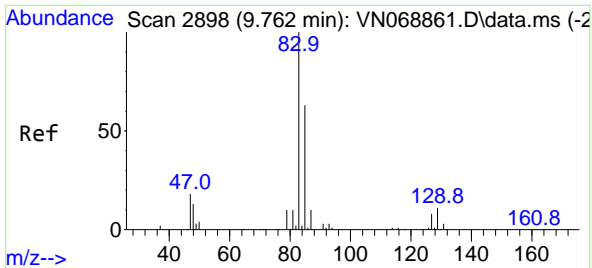


#42  
 1,2-Dichloroethane  
 Concen: 31.49 ug/l  
 RT: 8.533 min Scan# 2440  
 Delta R.T. 0.003 min  
 Lab File: VN068896.D  
 Acq: 13 Oct 2021 14:32



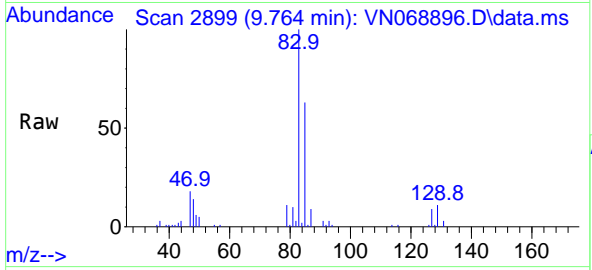
Tgt Ion: 62 Resp: 196511  
 Ion Ratio Lower Upper  
 62 100  
 98 9.3 0.0 17.2





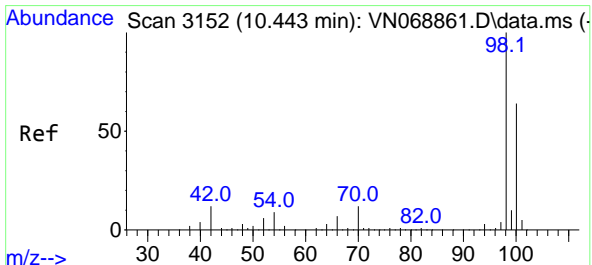
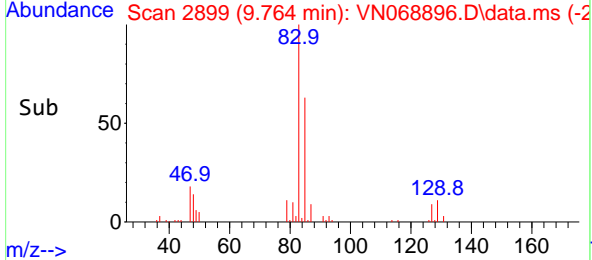
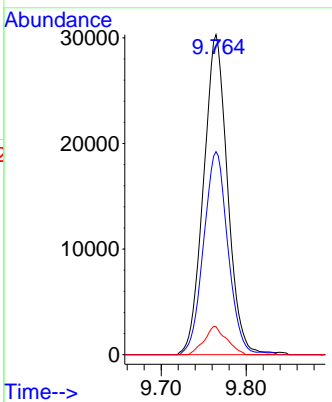
#47  
 Bromodichloromethane  
 Concen: 9.18 ug/l  
 RT: 9.764 min Scan# 2899  
 Delta R.T. 0.003 min  
 Lab File: VN068896.D  
 Acq: 13 Oct 2021 14:32

Instrument : MSVOA\_N  
 ClientSampled : PP-PROCESS-BLEED

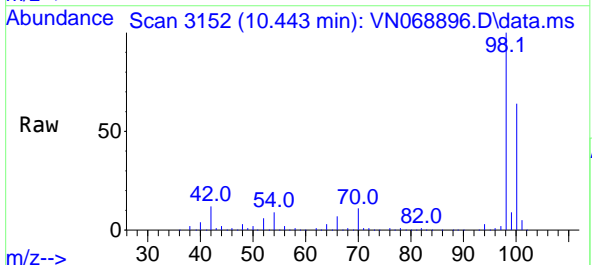


Tgt Ion: 83 Resp: 59410

Ion	Ratio	Lower	Upper
83	100		
85	63.4	50.7	76.1
127	8.7	6.5	9.7

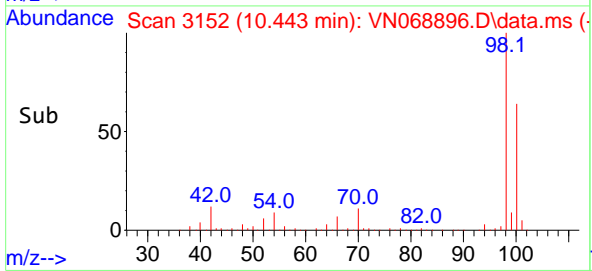
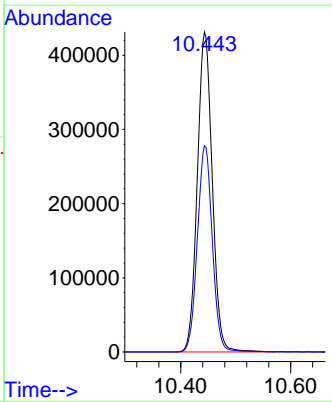


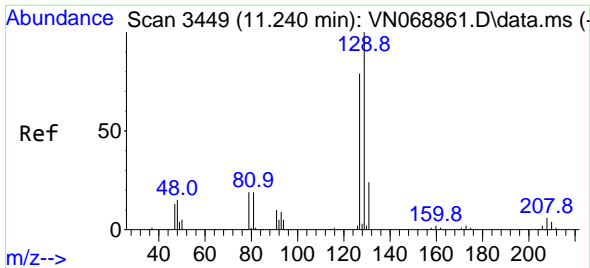
#50  
 Toluene-d8  
 Concen: 51.59 ug/l  
 RT: 10.443 min Scan# 3152  
 Delta R.T. -0.000 min  
 Lab File: VN068896.D  
 Acq: 13 Oct 2021 14:32



Tgt Ion: 98 Resp: 813892

Ion	Ratio	Lower	Upper
98	100		
100	64.6	51.5	77.3

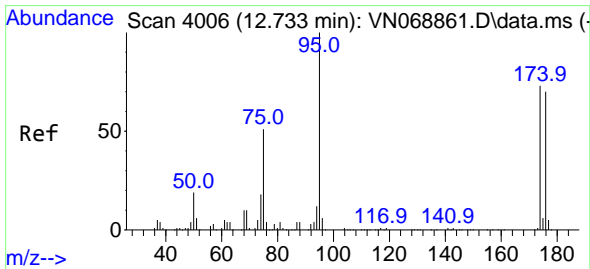
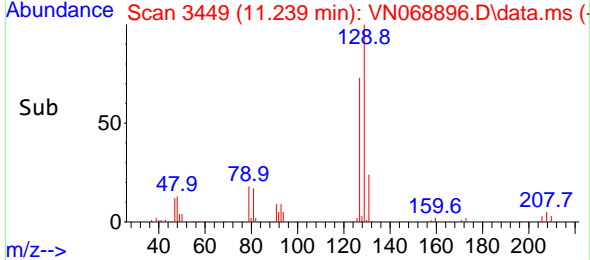
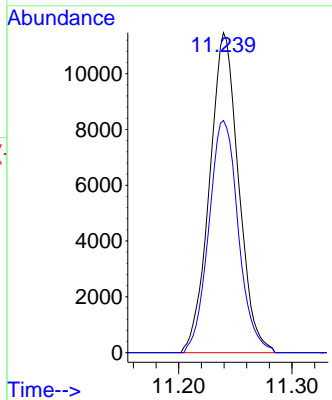
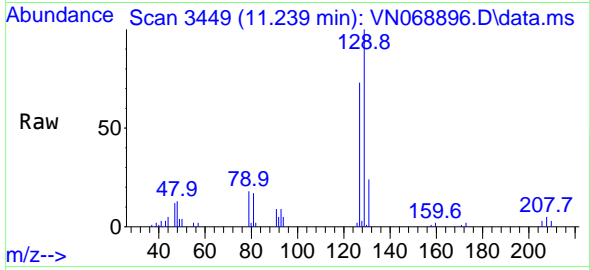




#60  
 Dibromochloromethane  
 Concen: 4.05 ug/l  
 RT: 11.239 min Scan# 3449  
 Delta R.T. -0.000 min  
 Lab File: VN068896.D  
 Acq: 13 Oct 2021 14:32

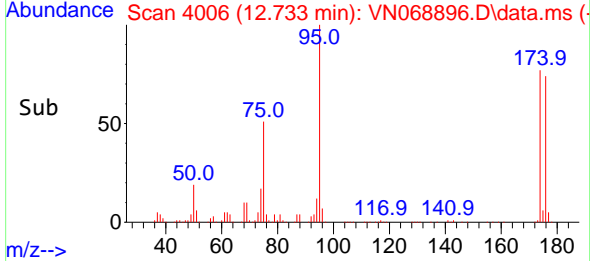
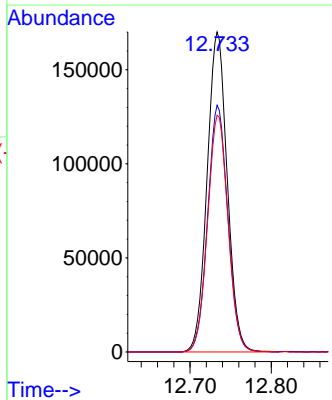
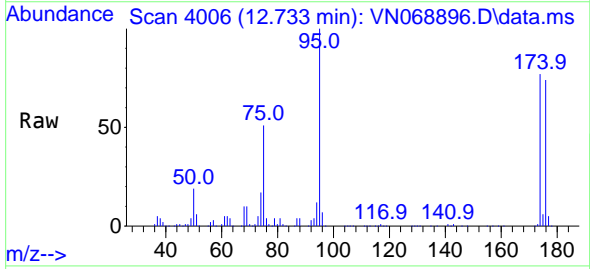
**Instrument :**  
 MSVOA\_N  
**ClientSampled :**  
 PP-PROCESS-BLEED

Tgt Ion:129 Resp: 20431  
 Ion Ratio Lower Upper  
 129 100  
 127 73.7 39.1 117.2

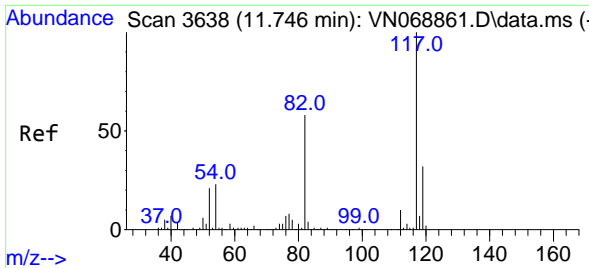


#62  
 4-Bromofluorobenzene  
 Concen: 49.15 ug/l  
 RT: 12.733 min Scan# 4006  
 Delta R.T. -0.000 min  
 Lab File: VN068896.D  
 Acq: 13 Oct 2021 14:32

Tgt Ion: 95 Resp: 292509  
 Ion Ratio Lower Upper  
 95 100  
 174 77.6 0.0 144.8  
 176 74.9 0.0 140.0

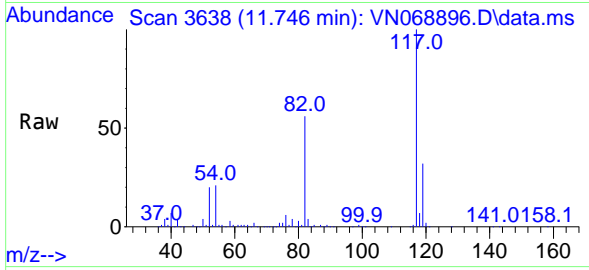






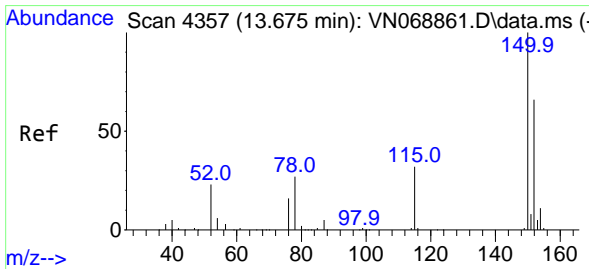
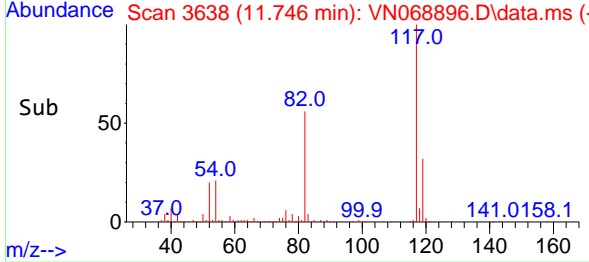
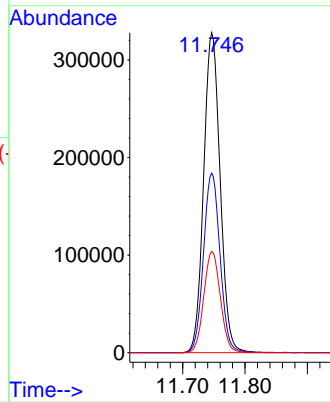
#63  
 Chlorobenzene-d5  
 Concen: 50.00 ug/l  
 RT: 11.746 min Scan# 3638  
 Delta R.T. -0.000 min  
 Lab File: VN068896.D  
 Acq: 13 Oct 2021 14:32

**Instrument :**  
 MSVOA\_N  
**ClientSampled :**  
 PP-PROCESS-BLEED

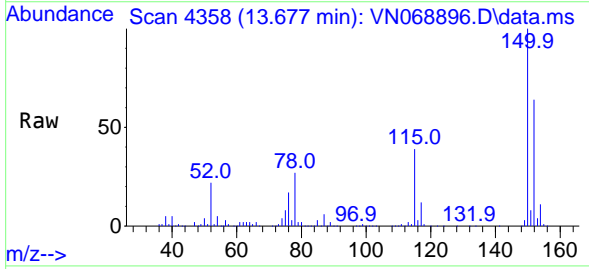


Tgt Ion:117 Resp: 601895

Ion	Ratio	Lower	Upper
117	100		
82	56.1	46.4	69.6
119	31.7	26.0	39.0

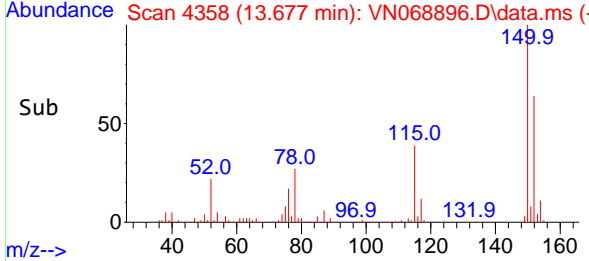
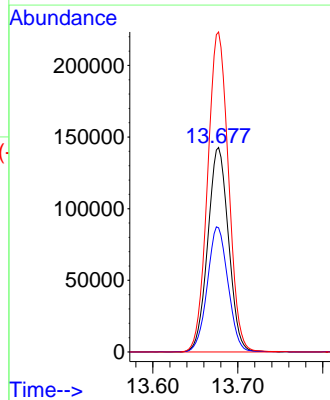


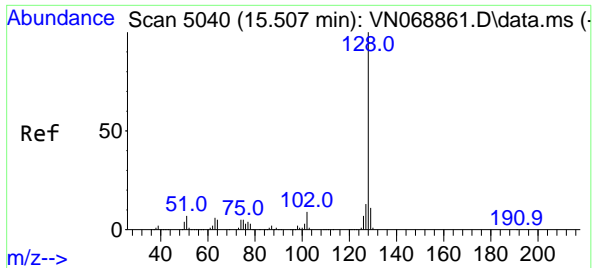
#72  
 1,4-Dichlorobenzene-d4  
 Concen: 50.00 ug/l  
 RT: 13.677 min Scan# 4358  
 Delta R.T. 0.003 min  
 Lab File: VN068896.D  
 Acq: 13 Oct 2021 14:32



Tgt Ion:152 Resp: 242117

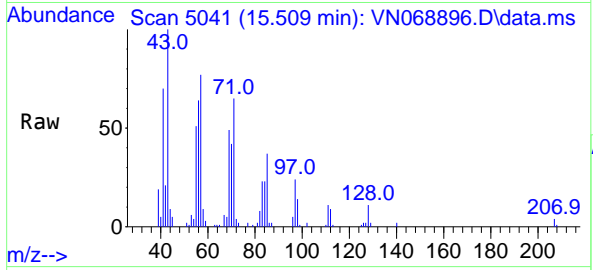
Ion	Ratio	Lower	Upper
152	100		
115	61.4	31.4	94.3
150	157.3	0.0	351.0





#95  
 Naphthalene  
 Concen: 4.10 ug/l  
 RT: 15.509 min Scan# 5041  
 Delta R.T. 0.002 min  
 Lab File: VN068896.D  
 Acq: 13 Oct 2021 14:32

**Instrument :**  
 MSVOA\_N  
**ClientSampled :**  
 PP-PROCESS-BLEED



Tgt Ion:128 Resp: 3563

Ion	Ratio	Lower	Upper
128	100		
127	16.1	10.5	15.7#
129	13.1	8.9	13.3

