

Data Path : Z:\VOASRV\HPCHEM1\MSVOA_N\DATA\VN101518\
 Data File : VN051868.D
 Acq On : 15 Oct 2018 12:27
 Operator : MD\SY
 Sample : J5512-03
 Misc : 5.00mL/MSVOA_N/WATER
 ALS Vial : 8 Sample Multiplier: 28

Instrument :
 MSVOA_N
 ClientSampleId :
 001M-WILLETS-PT-BLVD-AUG

Integration Parameters: RTEINT3.P
 Integrator: RTE
 Smoothing : OFF Filtering: 5
 Sampling : 1 Min Area: 0 % of largest Peak
 Start Thrs: 0.2 Max Peaks: 100
 Stop Thrs : 0 Peak Location: TOP

If leading or trailing edge < 100 prefer < Baseline drop else tangent >
 Peak separation: 5

Method : Z:\VOASRV\HPCHEM1\MSVOA_N\METHODS\624N101218W.M
 Title : METHOD 624 VOLATILE ORGANIC ANALYSIS

Signal : TIC

peak #	R.T. min	first scan	max scan	last scan	PK TY	peak height	corr. area	corr. % max.	% of total
1	3.818	618	636	659	rBV	498708	1318487	14.15%	6.563%
2	4.066	695	713	744	rBV	129695	373942	4.01%	1.861%
3	7.198	1668	1687	1713	rBV2	278767	773264	8.30%	3.849%
4	7.374	1721	1742	1766	rBV	194357	516472	5.54%	2.571%
5	8.030	1928	1946	1968	rBV	273668	645943	6.93%	3.215%
6	8.587	2101	2119	2146	rBV	722908	1518100	16.29%	7.557%
7	10.091	2570	2587	2596	rBV	1070213	1980132	21.25%	9.857%
8	10.156	2596	2607	2655	rVB	4986279	9317844	100.00%	46.384%
9	11.406	2981	2996	3022	rBV	900059	1656676	17.78%	8.247%
10	11.805	3105	3120	3133	rBV	249271	383128	4.11%	1.907%
11	12.403	3292	3306	3329	rBV	603000	1091730	11.72%	5.435%
12	13.165	3529	3543	3555	rVB5	59429	116391	1.25%	0.579%
13	13.291	3572	3582	3593	rVB	185516	291790	3.13%	1.453%
14	14.901	4075	4083	4092	rVB3	64863	104518	1.12%	0.520%

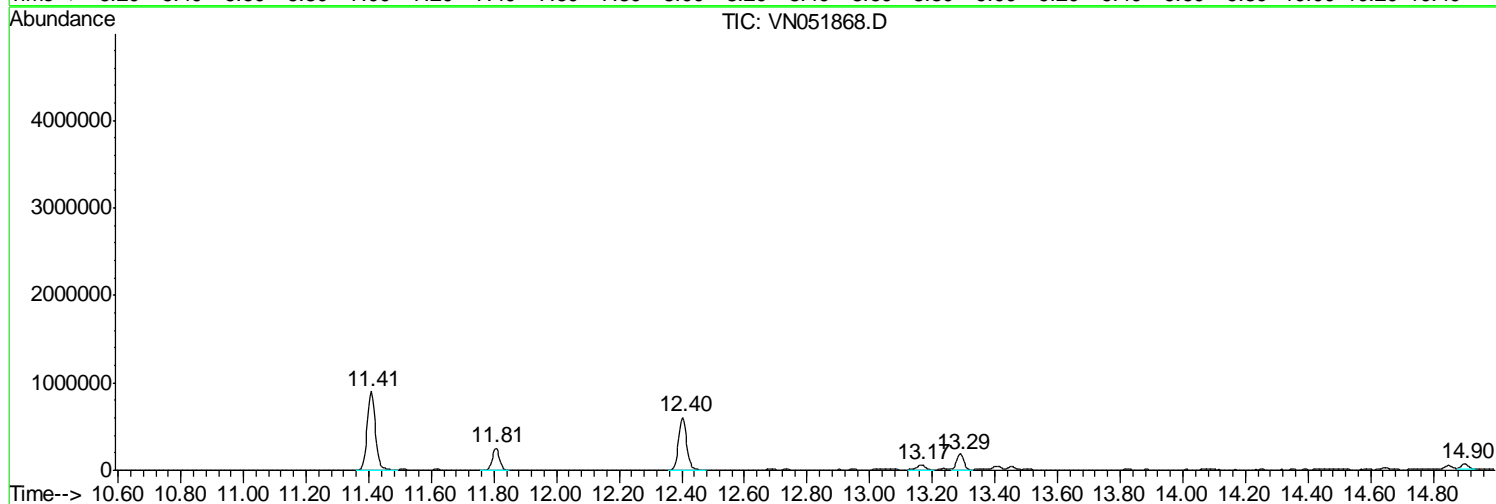
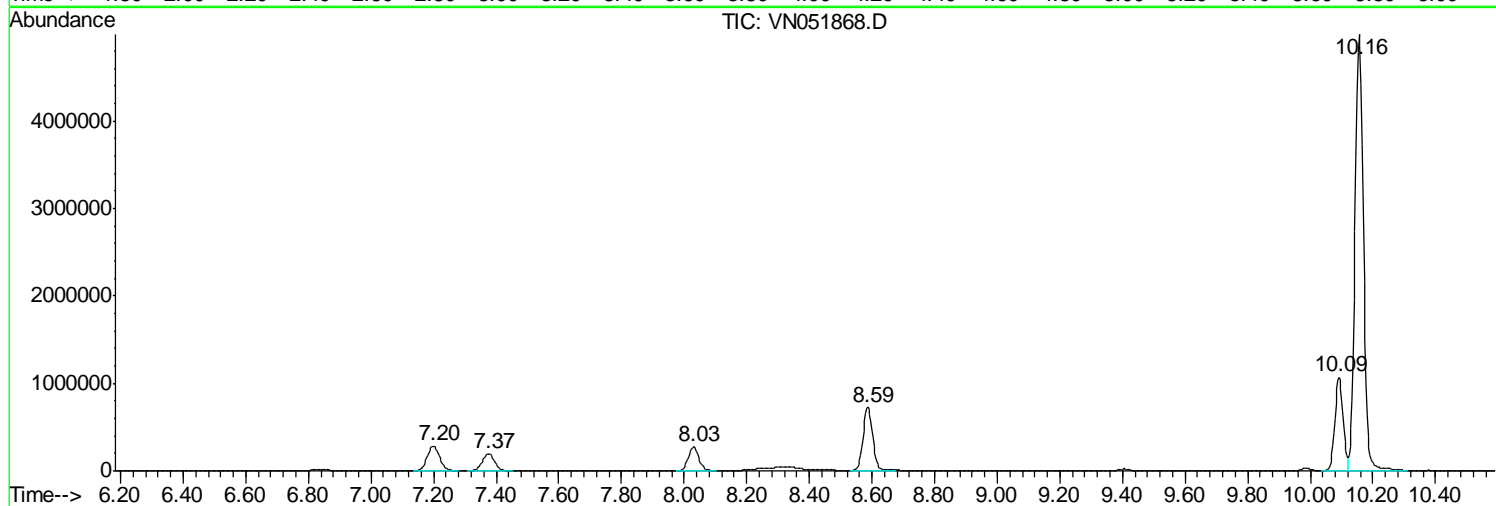
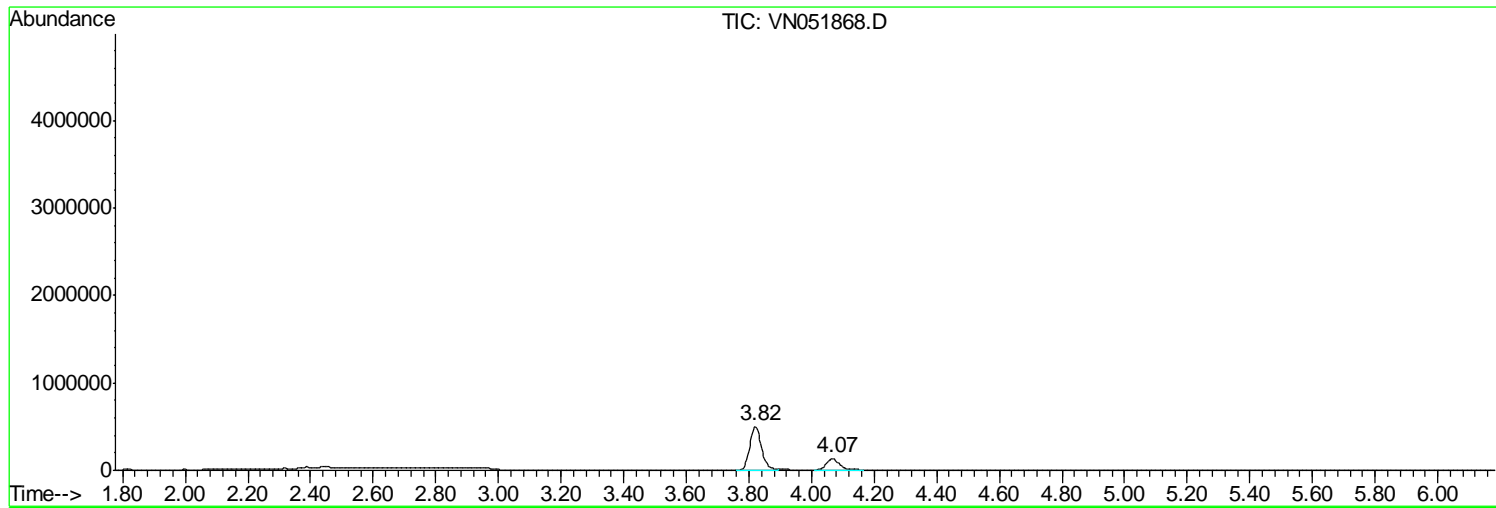
Sum of corrected areas: 20088417

Data Path : Z:\VOASRV\HPCHEM1\MSVOA_N\DATA\VN101518\
Data File : VN051868.D
Acq On : 15 Oct 2018 12:27
Operator : MD\SY
Sample : J5512-03
Misc : 5.00mL/MSVOA_N/WATER
ALS Vial : 8 Sample Multiplier: 28

Instrument :
MSVOA_N
ClientSampleId :
001M-WILLETS-PT-BLVD-AUG

Quant Method : Z:\VOASRV\HPCHEM1\MSVOA_N\METHODS\624N101218W.M
Quant Title : METHOD 624 VOLATILE ORGANIC ANALYSIS

TIC Library : C:\DATABASE\NIST02.L
TIC Integration Parameters: LSCINT.P



Data Path : Z:\VOASRV\HPCHEM1\MSVOA_N\DATA\VN101518\
 Data File : VN051868.D
 Acq On : 15 Oct 2018 12:27
 Operator : MD\SY
 Sample : J5512-03
 Misc : 5.00mL/MSVOA_N/WATER
 ALS Vial : 8 Sample Multiplier: 28

Instrument :
 MSVOA_N
 ClientSampleID :
 001M-WILLETS-PT-BLVD-AUG

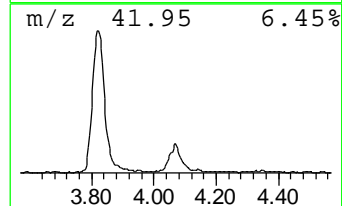
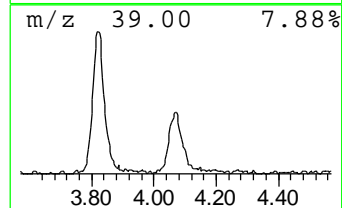
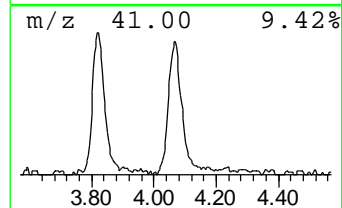
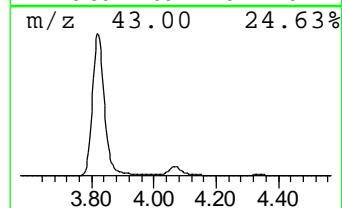
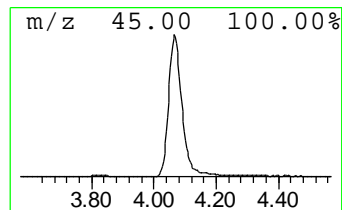
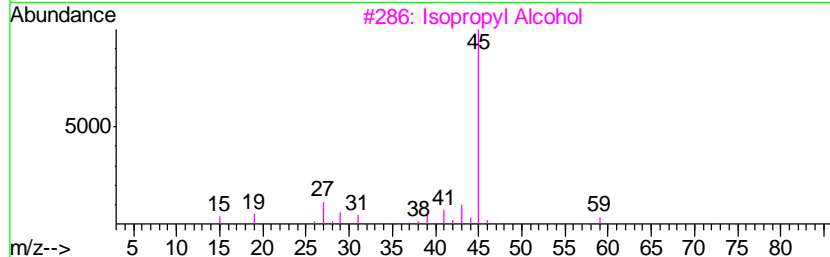
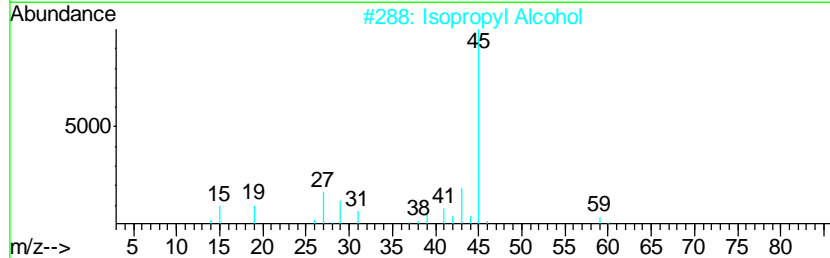
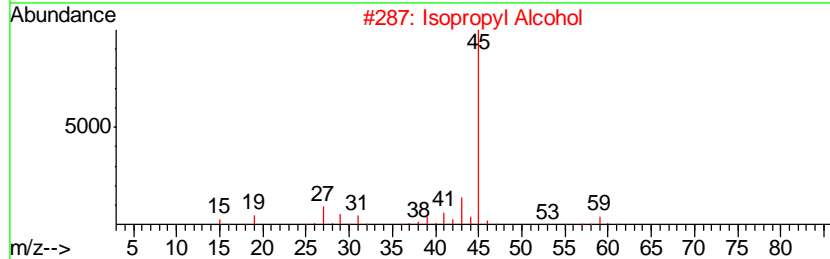
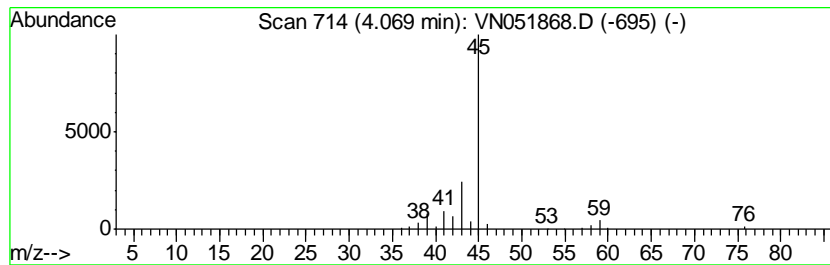
Quant Method : Z:\VOASRV\HPCHEM1\MSVOA_N\METHODS\624N101218W.M
 Quant Title : METHOD 624 VOLATILE ORGANIC ANALYSIS

TIC Library : C:\DATABASE\NIST02.L
 TIC Integration Parameters: LSCINT.P

 Peak Number 1 Isopropyl Alcohol Concentration Rank 1

R.T.	EstConc	Area	Relative to ISTD	R.T.
4.07	14.51 ug/l	373942	Bromochloromethane	7.20

Hit#	of	Tentative ID	MW	MolForm	CAS#	Qual
1	5	Isopropyl Alcohol	60	C3H8O	000067-63-0	80
2		Isopropyl Alcohol	60	C3H8O	000067-63-0	78
3		Isopropyl Alcohol	60	C3H8O	000067-63-0	78
4		Propane, 2-ethoxy-	88	C5H12O	000625-54-7	64
5		Propane, 2-ethoxy-	88	C5H12O	000625-54-7	40



Data Path : Z:\VOASRV\HPCHEM1\MSVOA_N\DATA\VN101518\
 Data File : VN051868.D
 Acq On : 15 Oct 2018 12:27
 Operator : MD\SY
 Sample : J5512-03
 Misc : 5.00mL/MSVOA_N/WATER
 ALS Vial : 8 Sample Multiplier: 28

Instrument :
 MSVOA_N
 ClientSampleId :
 001M-WILLETS-PT-BLVD-AUG

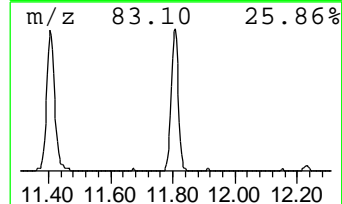
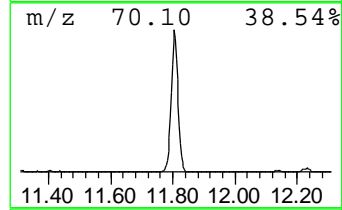
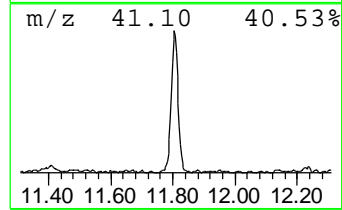
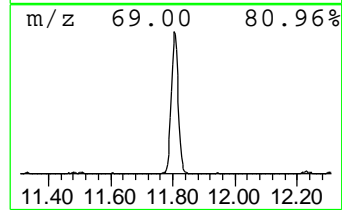
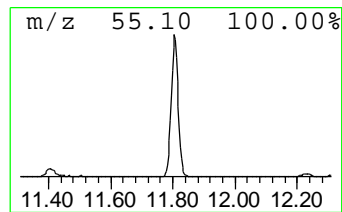
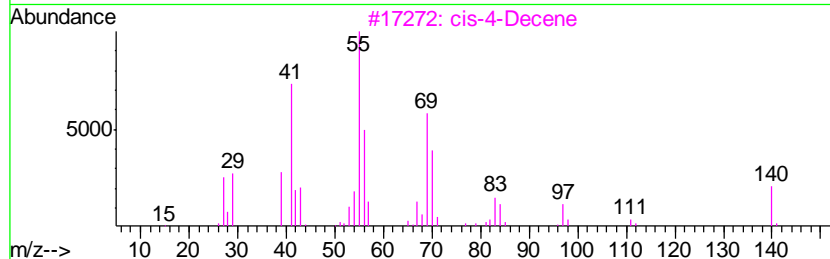
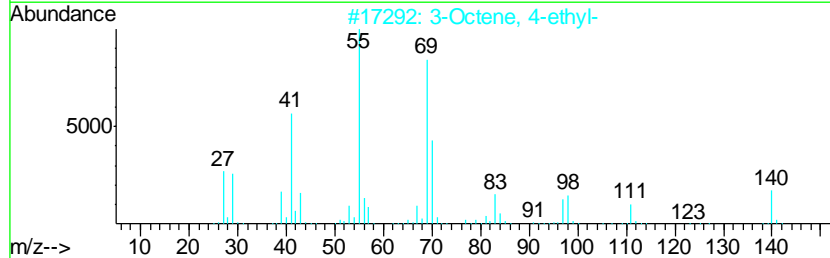
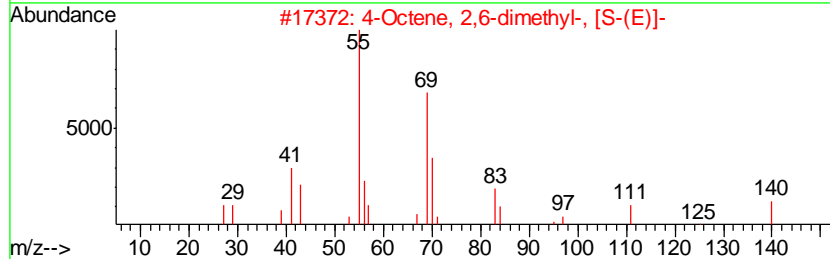
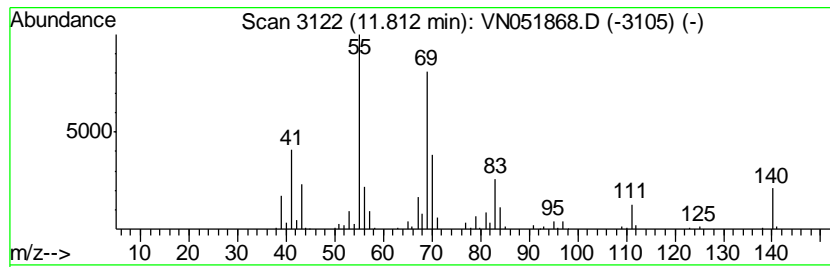
Quant Method : Z:\VOASRV\HPCHEM1\MSVOA_N\METHODS\624N101218W.M
 Quant Title : METHOD 624 VOLATILE ORGANIC ANALYSIS

TIC Library : C:\DATABASE\NIST02.L
 TIC Integration Parameters: LSCINT.P

 Peak Number 2 4-Octene, 2,6-dimethyl-, [S... Concentration Rank 2

R.T.	EstConc	Area	Relative to ISTD	R.T.
11.81	6.94 ug/l	383128	Chlorobenzene-d5	11.41

Hit#	of	Tentative ID	MW	MolForm	CAS#	Qual
1	5	4-Octene, 2,6-dimethyl-, [S-(E)]-	140	C10H20	062960-76-3	91
2		3-Octene, 4-ethyl-	140	C10H20	053966-51-1	83
3		cis-4-Decene	140	C10H20	019398-88-0	72
4		2-Octene, 4-ethyl-	140	C10H20	053966-52-2	64
5		3-Heptene, 4-propyl-	140	C10H20	004485-13-6	64



Data Path : Z:\VOASRV\HPCHEM1\MSVOA_N\DATA\VN101518\
Data File : VN051868.D
Acq On : 15 Oct 2018 12:27
Operator : MD\SY
Sample : J5512-03
Misc : 5.00mL/MSVOA_N/WATER
ALS Vial : 8 Sample Multiplier: 28

Instrument :
MSVOA_N
ClientSampleId :
001M-WILLETS-PT-BLVD-AUG

Quant Method : Z:\VOASRV\HPCHEM1\MSVOA_N\METHODS\624N101218W.M
Quant Title : METHOD 624 VOLATILE ORGANIC ANALYSIS

TIC Library : C:\DATABASE\NIST02.L
TIC Integration Parameters: LSCINT.P

TIC Top Hit name	RT	EstConc	Units	Response	--Internal Standard--			
					#	RT	Resp	Conc
Isopropyl Alcohol	4.07	14.5	ug/l	373942	1	7.20	773264	30.0
4-Octene, 2,6-dim...	11.81	6.9	ug/l	383128	3	11.41	1656680	30.0