

Data Path : Z:\VOASRV\HPCHEM1\MSVOA N\DATA\VN101620\
 Data File : VN064182.D
 Acq On : 16 Oct 2020 22:17
 Operator : JC/MD
 Sample : L4218-04
 Misc : 5.00mL/MSVOA N/WATER
 ALS Vial : 21 Sample Multiplier: 1

Instrument :
 MSVOA_N
 ClientSampled :
 HD-01-101520

Quant Time: Oct 17 01:33:39 2020
 Quant Method : Z:\VOASRV\HPCHEM1\MSVOA_N\METHODS\82N101420W.M
 Quant Title : SW846 8260
 QLast Update : Thu Oct 15 01:16:44 2020
 Response via : Initial Calibration

Internal Standards	R.T.	QIon	Response	Conc	Units	Dev(Min)
1) Pentafluorobenzene	7.63	168	308370	50.00	ug/l	0.00
34) 1,4-Difluorobenzene	8.55	114	658435	50.00	ug/l	0.00
63) Chlorobenzene-d5	11.38	117	675850	50.00	ug/l	0.00
72) 1,4-Dichlorobenzene-d4	13.32	152	245264	50.00	ug/l	0.00

System Monitoring Compounds	R.T.	QIon	Response	Conc	Units	Dev(Min)
33) 1,2-Dichloroethane-d4	7.99	65	277121	63.10	ug/l	0.00
Spiked Amount				50.000		
Recovery						126.20%
35) Dibromofluoromethane	7.55	113	213856	46.93	ug/l	0.00
Spiked Amount				50.000		
Recovery						93.86%
50) Toluene-d8	10.06	98	844702	49.12	ug/l	0.00
Spiked Amount				50.000		
Recovery						98.24%
62) 4-Bromofluorobenzene	12.38	95	283369	47.94	ug/l	0.00
Spiked Amount				50.000		
Recovery						95.88%

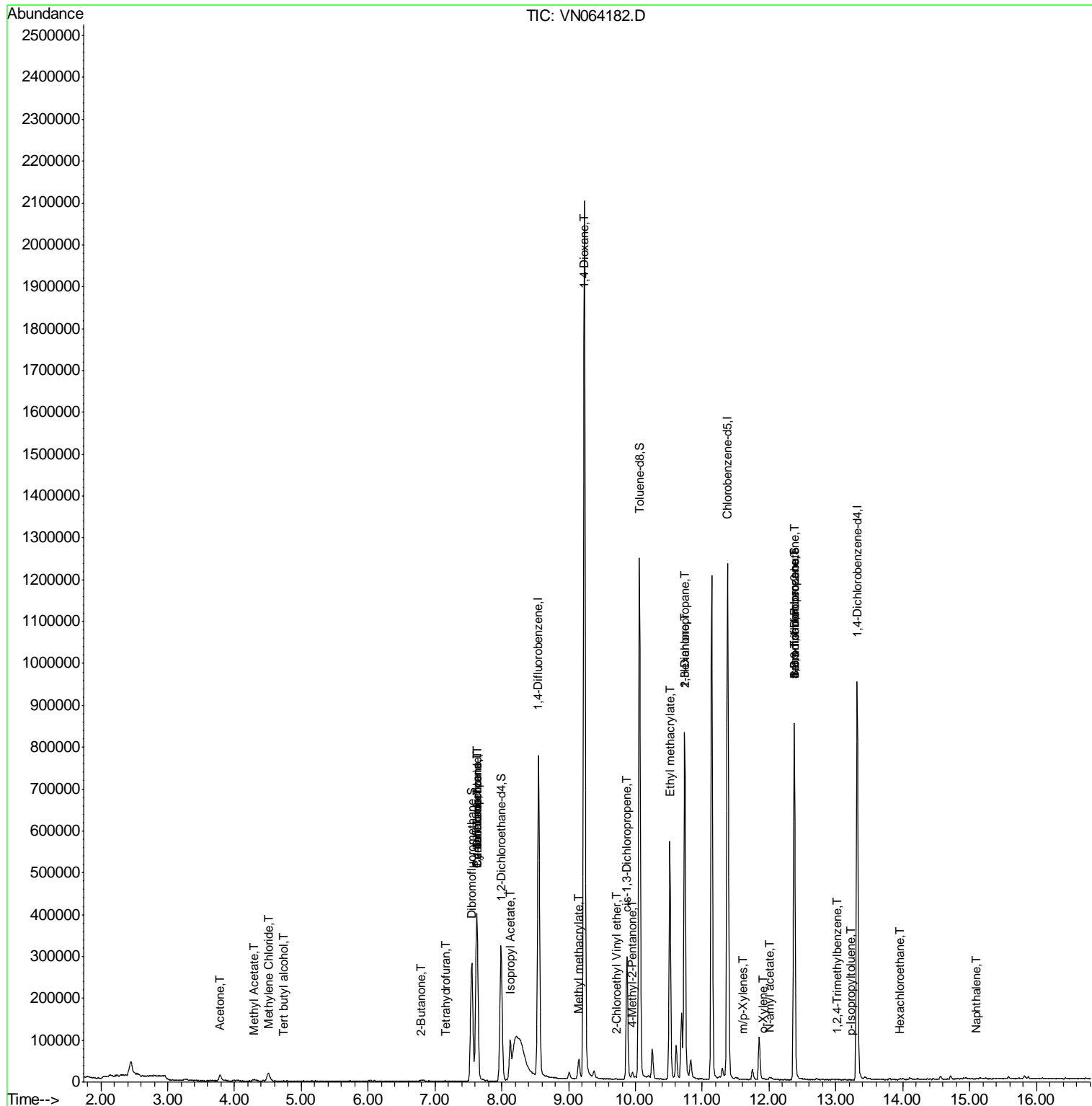
Target Compounds	R.T.	QIon	Response	Conc	Units	Qvalue
11) Tert butyl alcohol	4.73	59	305	0.627	ug/l #	74
16) Acetone	3.78	43	23613	18.126	ug/l	95
18) Methyl Acetate	4.29	43	6169	1.888	ug/l #	70
20) Methylene Chloride	4.51	84	12983	3.221	ug/l #	96
25) 2-Butanone	6.78	43	489	0.244	ug/l #	70
29) Tetrahydrofuran	7.17	42	1370	1.170	ug/l #	36
31) Cyclohexane	7.62	56	8838	1.820	ug/l #	42
36) 1,1-Dichloropropene	7.63	75	27150	4.278	ug/l #	49
38) Carbon Tetrachloride	7.63	117	32987	4.834	ug/l #	18
43) Isopropyl Acetate	8.13	43	123024	13.163	ug/l #	85
48) Methyl methacrylate	9.15	41	6353	1.472	ug/l #	10
49) 1,4-Dioxane	9.24	88	380	5.797	ug/l #	1
51) 4-Methyl-2-Pentanone	9.96	43	13082	2.365	ug/l	90
54) cis-1,3-Dichloropropene	9.87	75	46370	5.885	ug/l #	75
56) Ethyl methacrylate	10.52	69	5252	3.006	ug/l #	1
57) 1,3-Dichloropropane	10.74	76	8051	0.999	ug/l #	42
58) 2-Chloroethyl Vinyl ether	9.73	63	61	12.235	ug/l #	48
59) 2-Hexanone	10.74	43	123383	34.911	ug/l #	51
68) m/p-Xylenes	11.61	106	31	2.195	ug/l #	1
69) o-Xylene	11.92	106	169	1.600	ug/l	51
71) Bromoform	12.38	173	3433	2.964	ug/l #	1
74) N-amyl acetate	12.01	43	4641	0.698	ug/l #	47
76) 1,2,3-Trichloropropane	12.38	75	151644	26.354	ug/l #	100
81) trans-1,4-Dichloro-2-buten	12.38	75	151644	80.517	ug/l #	12
84) 1,2,4-Trimethylbenzene	13.02	105	810	0.239	ug/l #	65
86) p-Isopropyltoluene	13.23	119	32	0.664	ug/l #	50
90) Hexachloroethane	13.96	117	506	0.201	ug/l #	12
95) Naphthalene	15.10	128	246	3.816	ug/l #	70

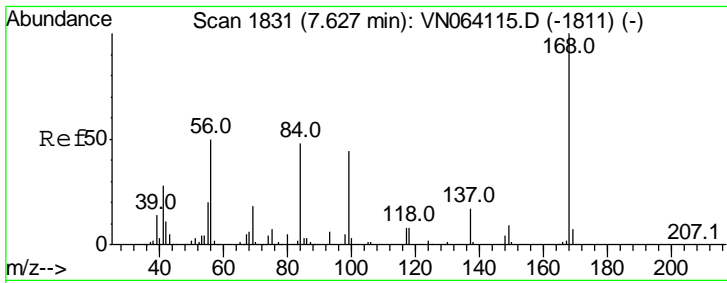
(#) = qualifier out of range (m) = manual integration (+) = signals summed

Data Path : Z:\VOASRV\HPCHEM1\MSVOA N\DATA\VN101620\
 Data File : VN064182.D
 Acq On : 16 Oct 2020 22:17
 Operator : JC/MD
 Sample : L4218-04
 Misc : 5.00mL/MSVOA N/WATER
 ALS Vial : 21 Sample Multiplier: 1

Instrument :
 MSVOA_N
 Client Sample ID :
 HD-01-101520

Quant Time: Oct 17 01:33:39 2020
 Quant Method : Z:\VOASRV\HPCHEM1\MSVOA_N\METHODS\82N101420W.M
 Quant Title : SW846 8260
 QLast Update : Thu Oct 15 01:16:44 2020
 Response via : Initial Calibration

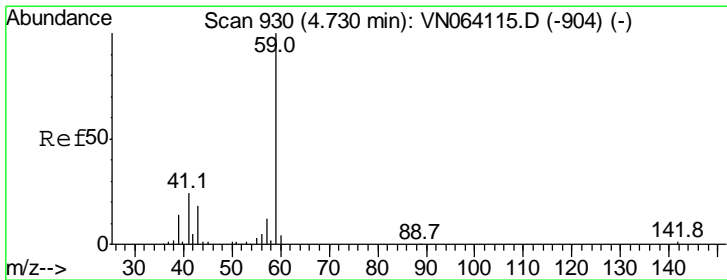
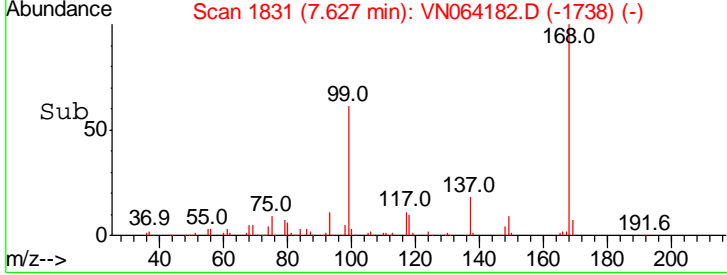
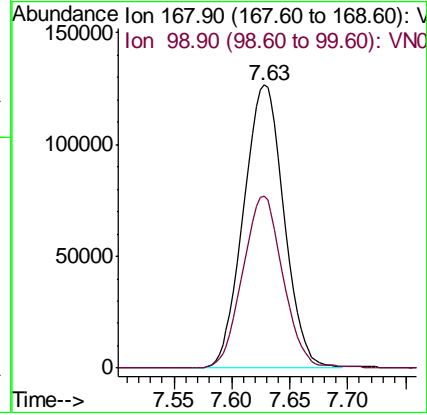
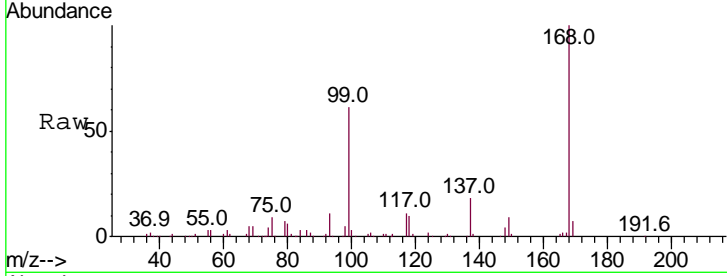




#1
 Pentafluorobenzene
 Concen: 50.000 ug/l
 RT: 7.63 min Scan# 1831
 Delta R.T. 0.00 min
 Lab File: VN064182.D
 Acq: 16 Oct 2020 22:17

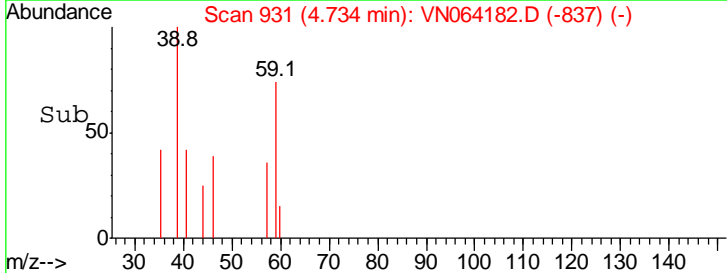
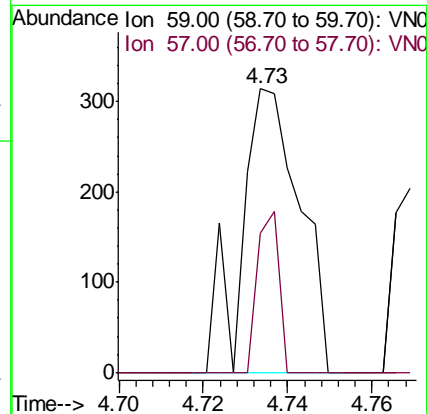
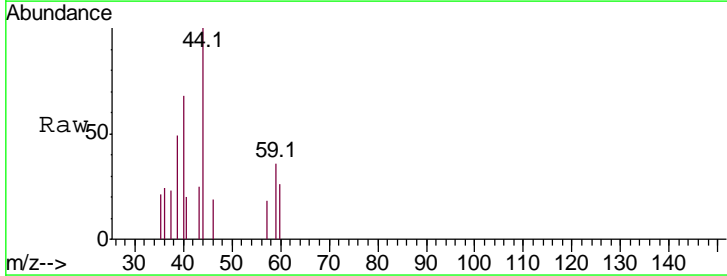
Instrument :
 MSVOA_N
 ClientSampleID :
 HD-01-101520

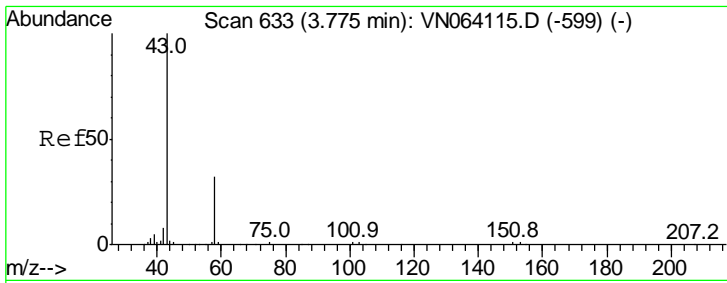
Tgt Ion: 168 Resp: 308370
 Ion Ratio Lower Upper
 168 100
 99 60.9 43.6 65.4



#11
 Tert butyl alcohol
 Concen: 0.627 ug/l
 RT: 4.73 min Scan# 931
 Delta R.T. 0.00 min
 Lab File: VN064182.D
 Acq: 16 Oct 2020 22:17

Tgt Ion: 59 Resp: 305
 Ion Ratio Lower Upper
 59 100
 57 21.0 8.9 13.3#

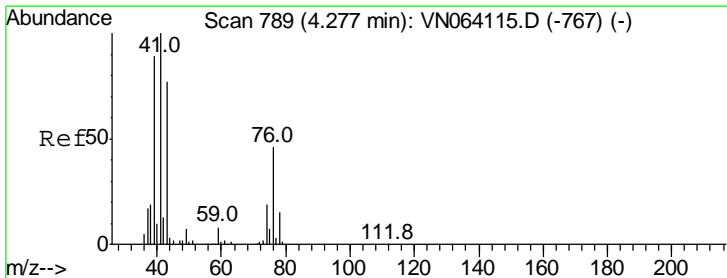
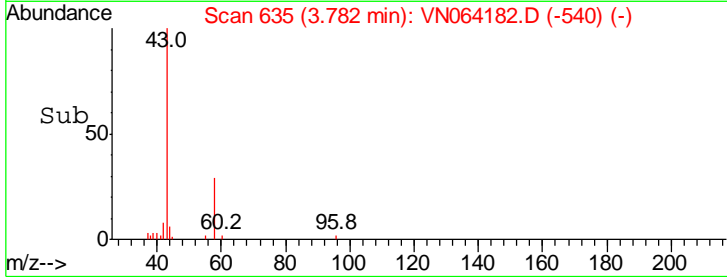
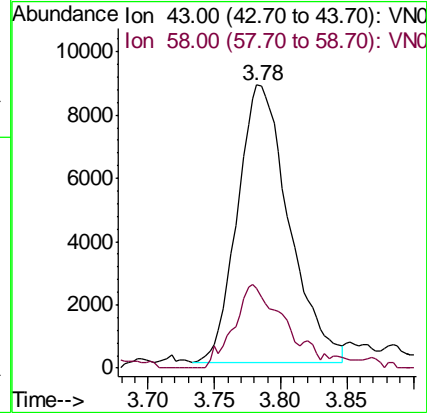
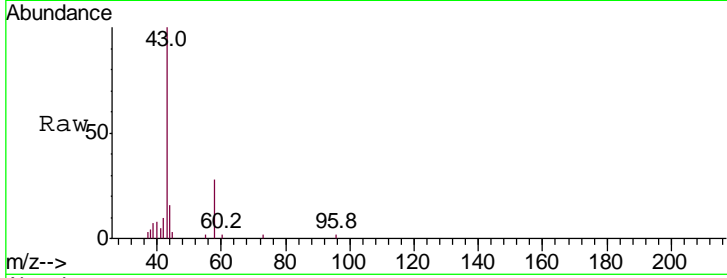




#16
 Acetone
 Concen: 18.126 ug/l
 RT: 3.78 min Scan# 635
 Delta R.T. 0.01 min
 Lab File: VN064182.D
 Acq: 16 Oct 2020 22:17

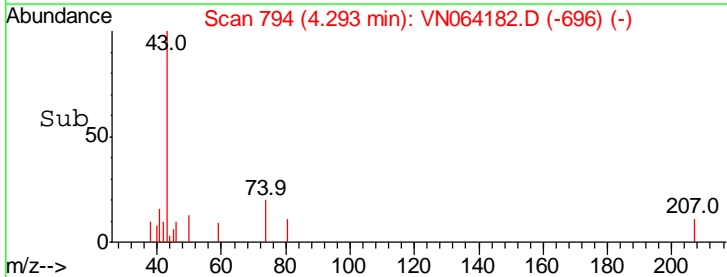
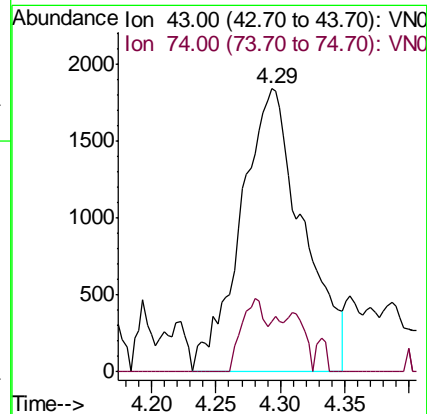
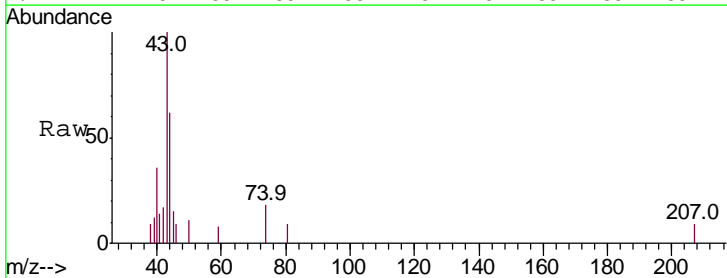
Instrument :
 MSVOA_N
 ClientSampleId :
 HD-01-101520

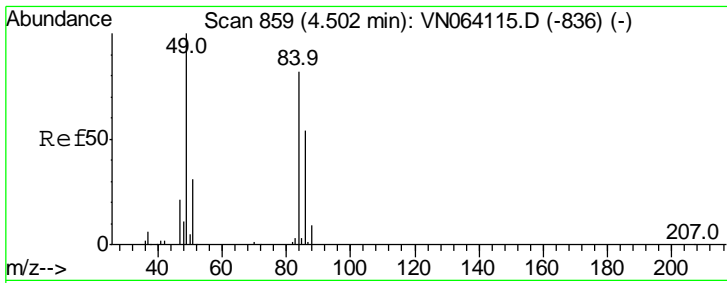
Tgt Ion: 43 Resp: 23613
 Ion Ratio Lower Upper
 43 100
 58 28.6 25.2 37.8



#18
 Methyl Acetate
 Concen: 1.888 ug/l
 RT: 4.29 min Scan# 794
 Delta R.T. 0.02 min
 Lab File: VN064182.D
 Acq: 16 Oct 2020 22:17

Tgt Ion: 43 Resp: 6169
 Ion Ratio Lower Upper
 43 100
 74 9.7 19.7 29.5#

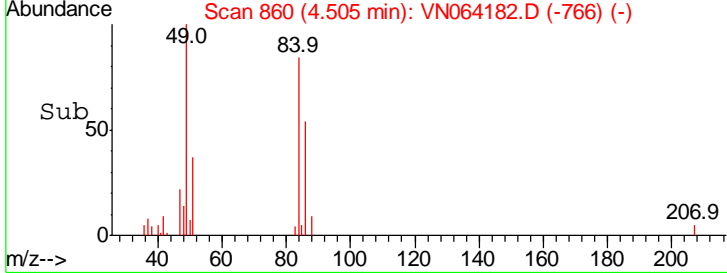
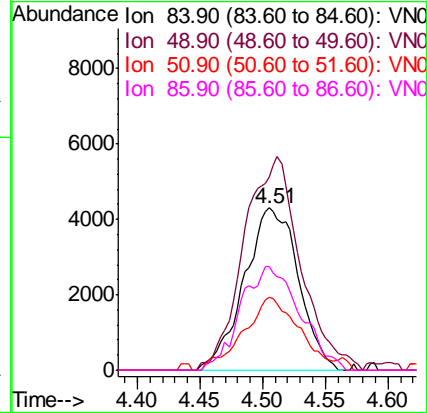
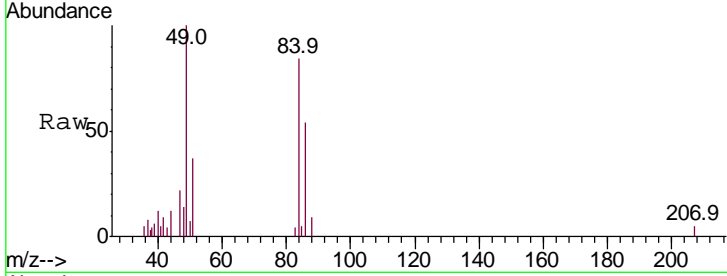




#20
Methylene Chloride
Concen: 3.221 ug/l
RT: 4.51 min Scan# 860
Delta R.T. 0.00 min
Lab File: VN064182.D
Acq: 16 Oct 2020 22:17

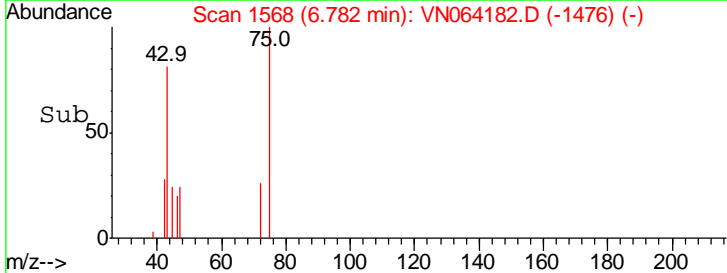
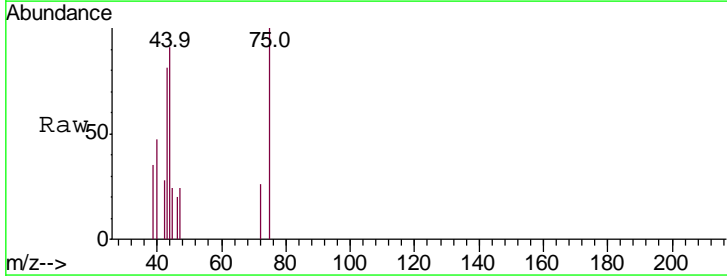
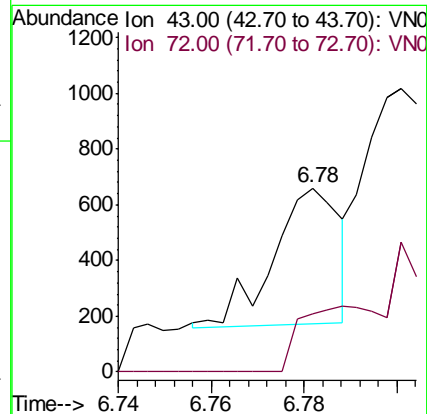
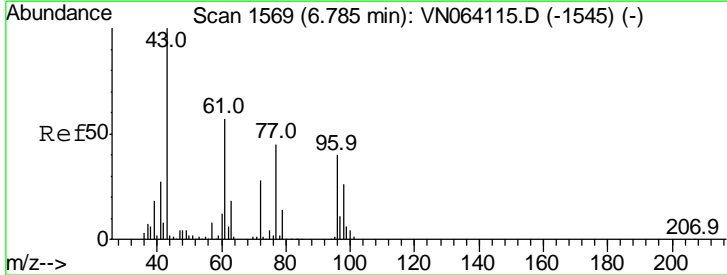
Instrument :
MSVOA_N
ClientSampled :
HD-01-101520

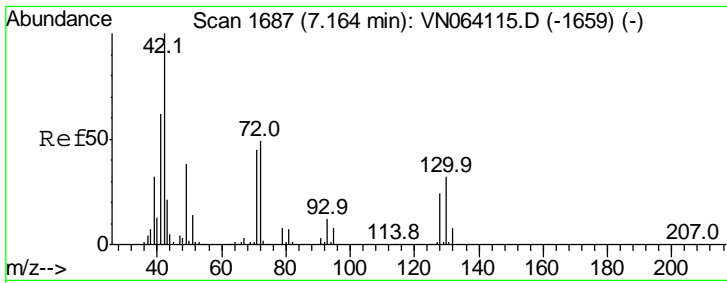
Tgt Ion	Resp	Lower	Upper
84	100		
49	118.9	97.4	146.0
51	44.6	29.7	44.5#
86	63.7	52.5	78.7



#25
2-Butanone
Concen: 0.244 ug/l
RT: 6.78 min Scan# 1568
Delta R.T. -0.00 min
Lab File: VN064182.D
Acq: 16 Oct 2020 22:17

Tgt Ion	Resp	Lower	Upper
43	100		
72	43.2	22.2	33.2#

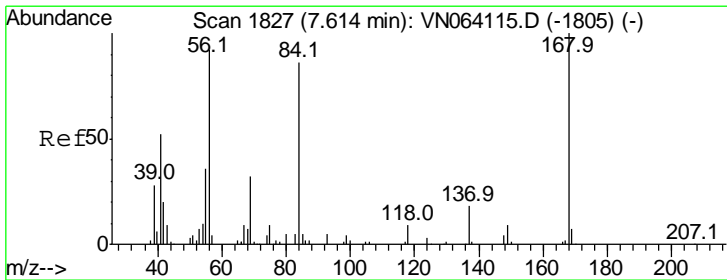
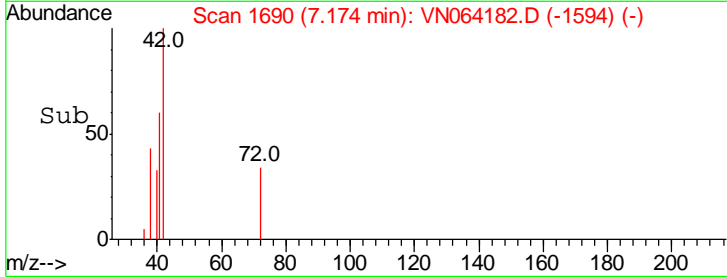
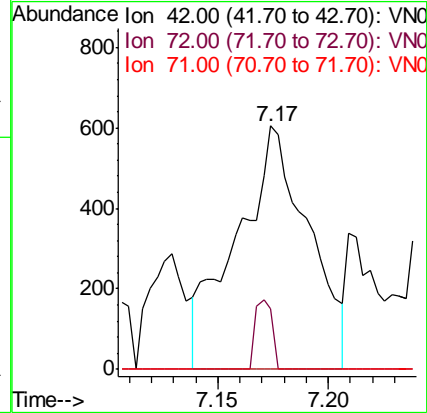
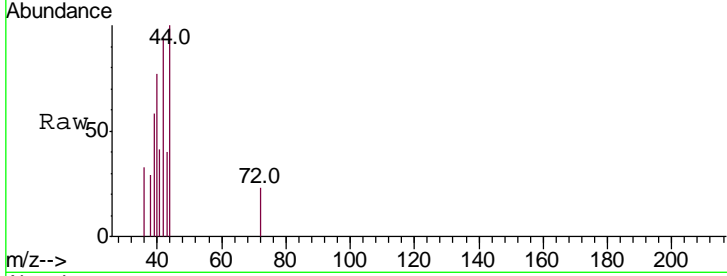




#29
 Tetrahydrofuran
 Concen: 1.170 ug/l
 RT: 7.17 min Scan# 1690
 Delta R.T. 0.01 min
 Lab File: VN064182.D
 Acq: 16 Oct 2020 22:17

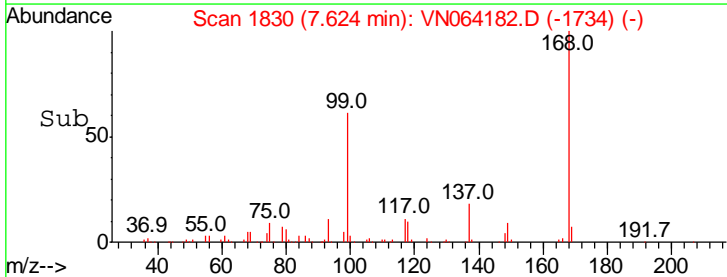
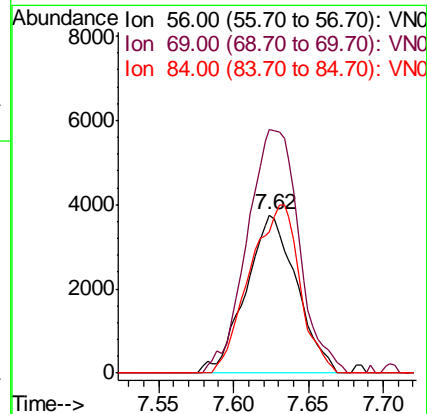
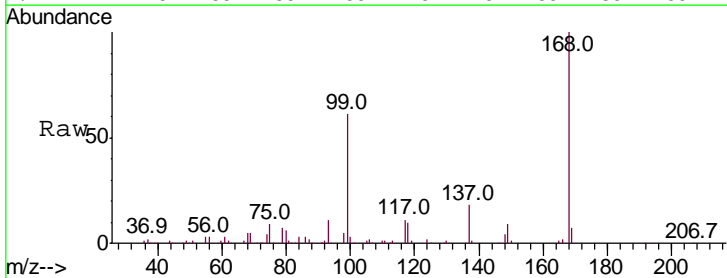
Instrument :
 MSVOA_N
 ClientSampleId :
 HD-01-101520

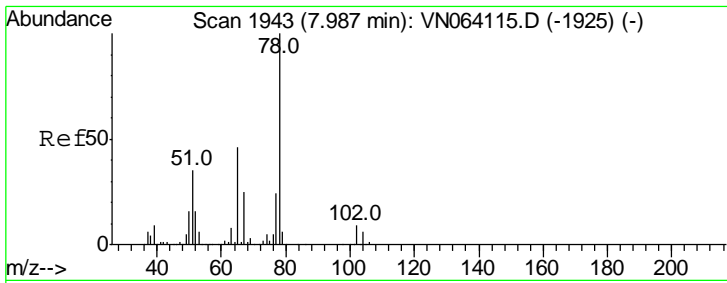
Tgt Ion	Ratio	Lower	Upper
42	100		
72	6.8	37.8	56.6#
71	0.0	35.3	52.9#



#31
 Cyclohexane
 Concen: 1.820 ug/l
 RT: 7.62 min Scan# 1830
 Delta R.T. 0.01 min
 Lab File: VN064182.D
 Acq: 16 Oct 2020 22:17

Tgt Ion	Ratio	Lower	Upper
56	100		
69	154.2	27.8	41.6#
84	89.5	73.2	109.8

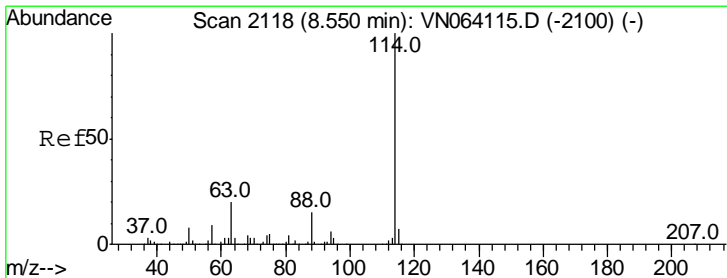
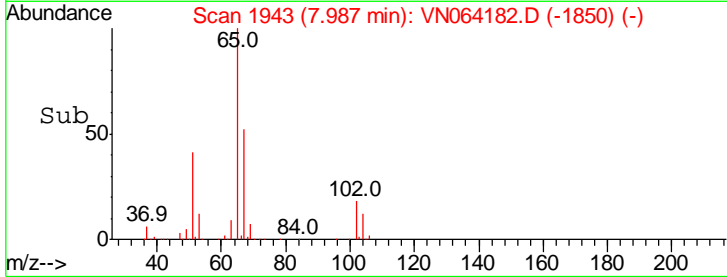
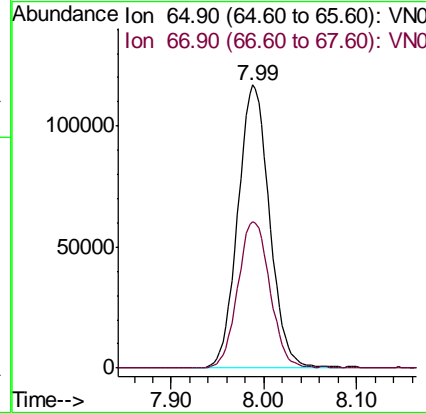
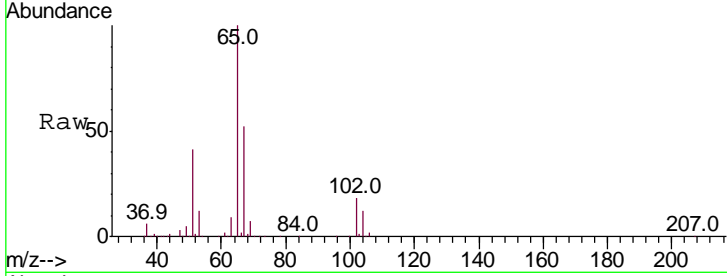




#33
 1,2-Dichloroethane-d4
 Concen: 63.099 ug/l
 RT: 7.99 min Scan# 1943
 Delta R.T. 0.00 min
 Lab File: VN064182.D
 Acq: 16 Oct 2020 22:17

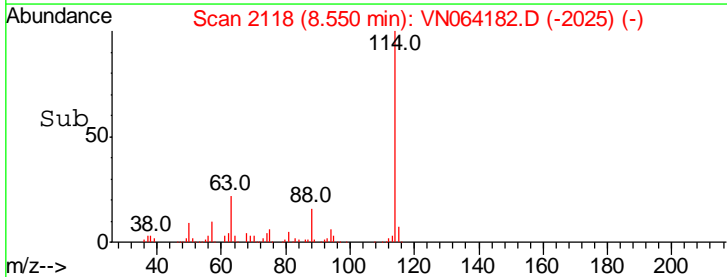
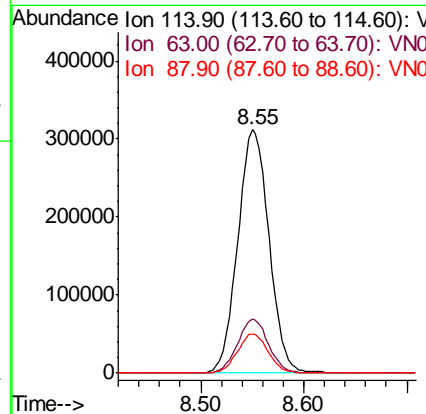
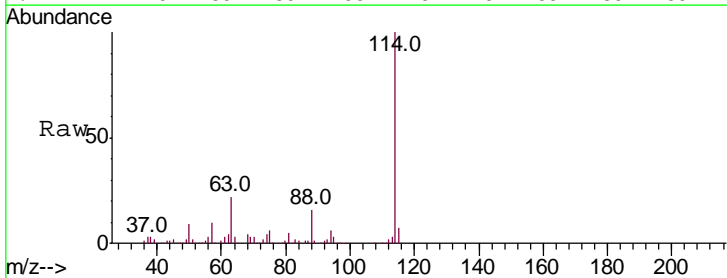
Instrument :
 MSVOA_N
 ClientSampled :
 HD-01-101520

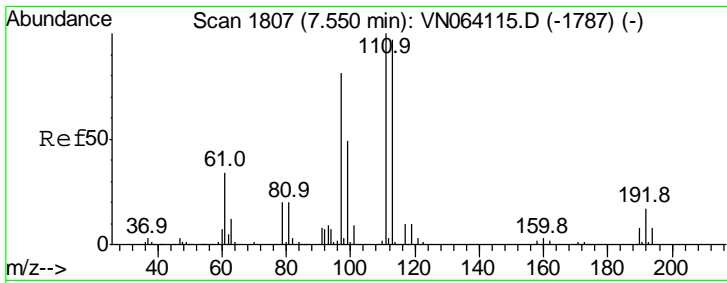
Tgt Ion	Resp	Lower	Upper
65	100		
67	52.5	0.0	105.6



#34
 1,4-Difluorobenzene
 Concen: 50.000 ug/l
 RT: 8.55 min Scan# 2118
 Delta R.T. 0.00 min
 Lab File: VN064182.D
 Acq: 16 Oct 2020 22:17

Tgt Ion	Resp	Lower	Upper
114	100		
63	22.2	0.0	41.0
88	16.1	0.0	29.2

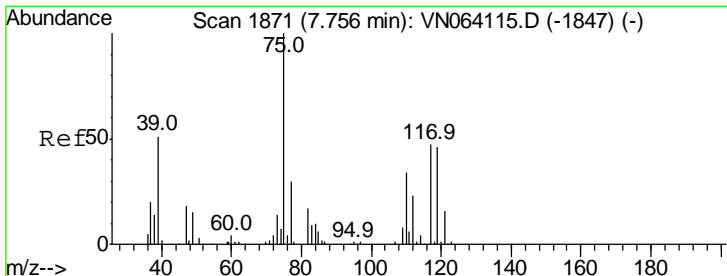
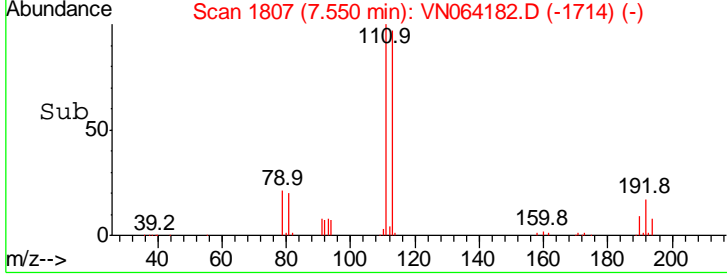
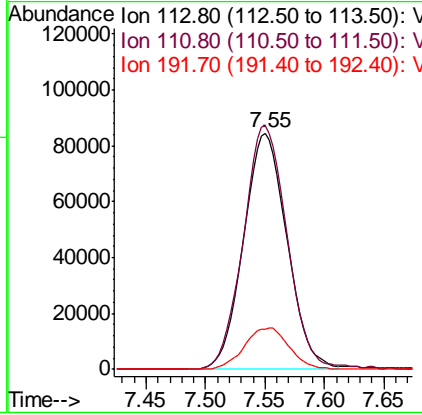
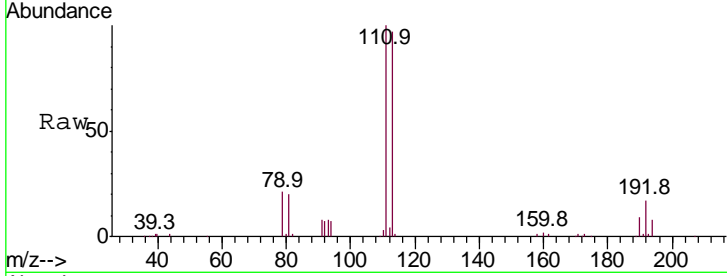




#35
 Dibromofluoromethane
 Concen: 46.925 ug/l
 RT: 7.55 min Scan# 1807
 Delta R.T. 0.00 min
 Lab File: VN064182.D
 Acq: 16 Oct 2020 22:17

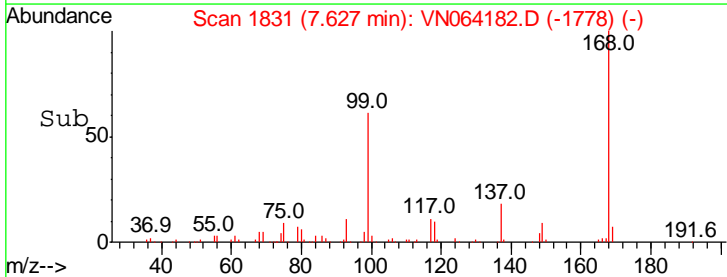
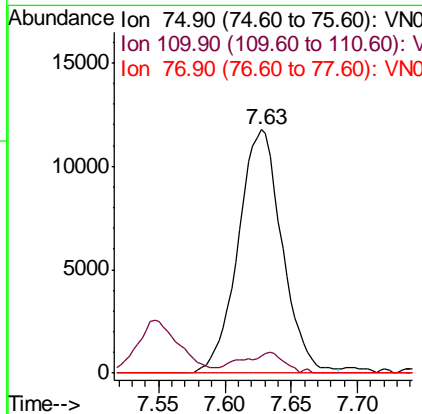
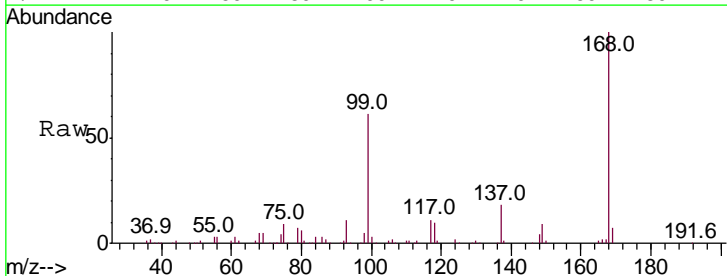
Instrument : MSVOA_N
 ClientSampleId : HD-01-101520

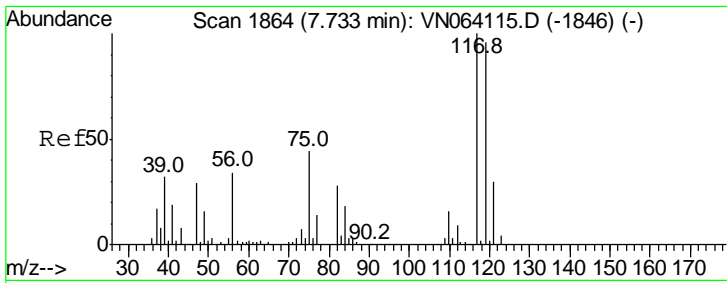
Tgt Ion	Resp	Lower	Upper
113	100		
111	103.4	81.9	122.9
192	18.2	14.3	21.5



#36
 1,1-Dichloropropene
 Concen: 4.278 ug/l
 RT: 7.63 min Scan# 1831
 Delta R.T. -0.13 min
 Lab File: VN064182.D
 Acq: 16 Oct 2020 22:17

Tgt Ion	Resp	Lower	Upper
75	100		
110	8.2	17.8	53.3#
77	0.0	24.9	37.3#

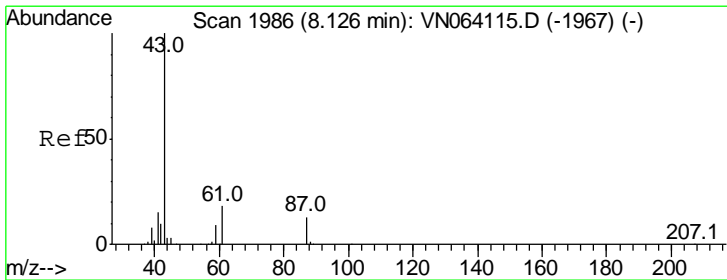
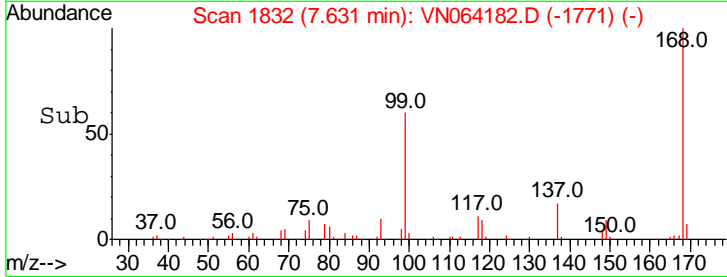
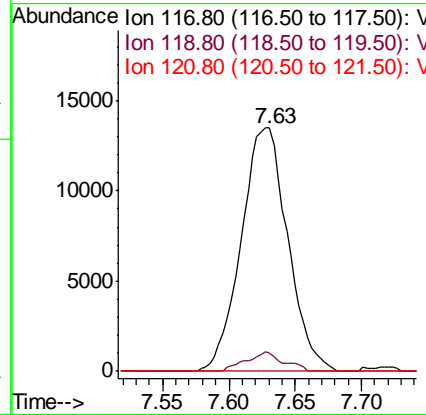
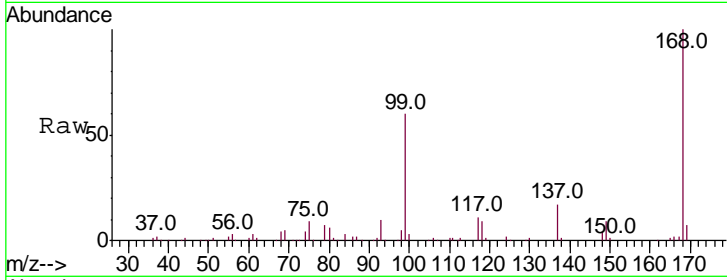




#38
 Carbon Tetrachloride
 Concen: 4.834 ug/l
 RT: 7.63 min Scan# 1832
 Delta R.T. -0.10 min
 Lab File: VN064182.D
 Acq: 16 Oct 2020 22:17

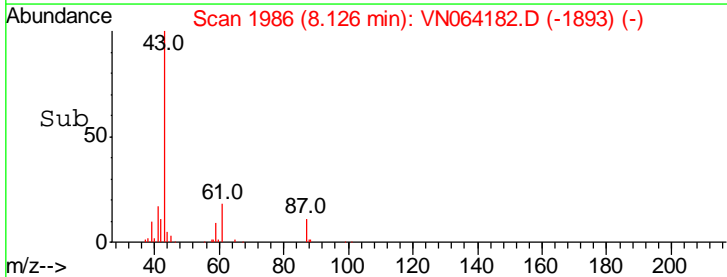
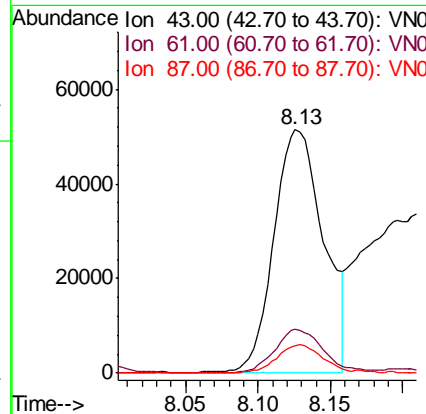
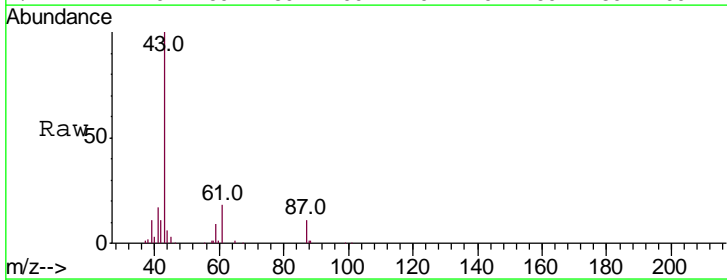
Instrument :
 MSVOA_N
 ClientSampled :
 HD-01-101520

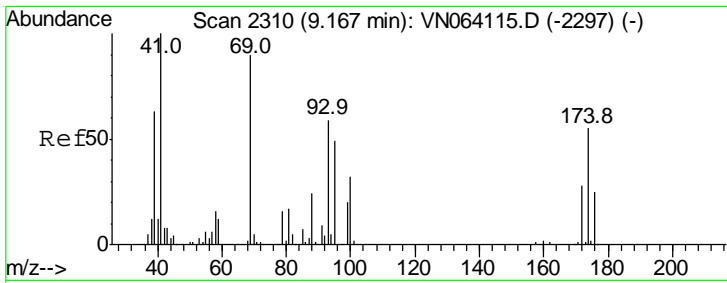
Tgt Ion	Ratio	Lower	Upper
117	100		
119	7.6	77.0	115.4#
121	0.0	24.2	36.4#



#43
 Isopropyl Acetate
 Concen: 13.163 ug/l
 RT: 8.13 min Scan# 1986
 Delta R.T. 0.00 min
 Lab File: VN064182.D
 Acq: 16 Oct 2020 22:17

Tgt Ion	Ratio	Lower	Upper
43	100		
61	17.6	21.9	32.9#
87	10.8	11.0	16.4#

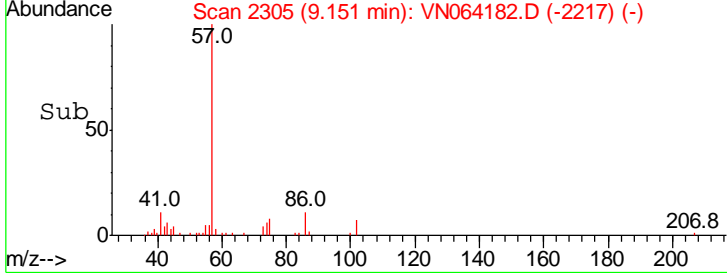
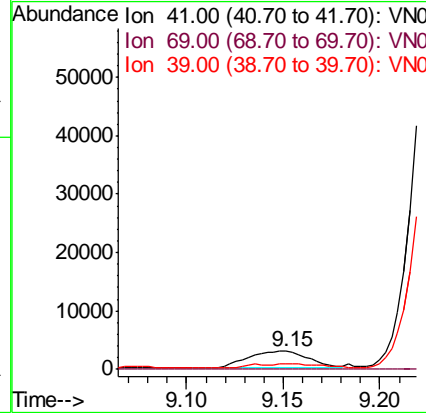
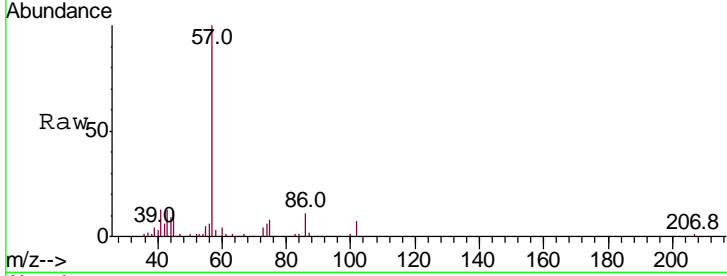




#48
 Methyl methacrylate
 Concen: 1.472 ug/l
 RT: 9.15 min Scan# 2305
 Delta R.T. -0.02 min
 Lab File: VN064182.D
 Acq: 16 Oct 2020 22:17

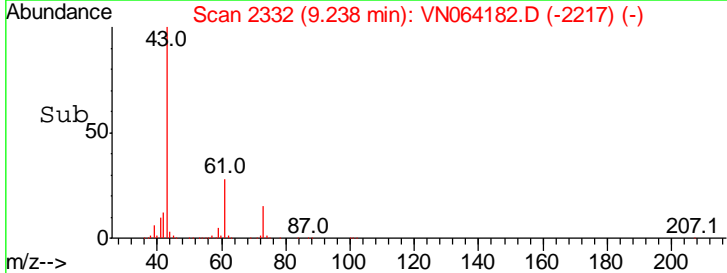
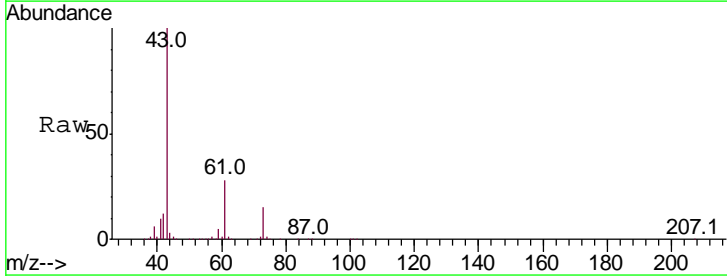
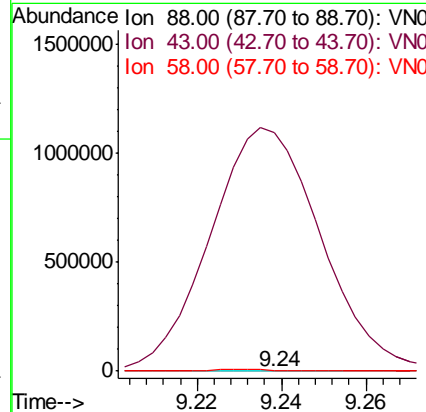
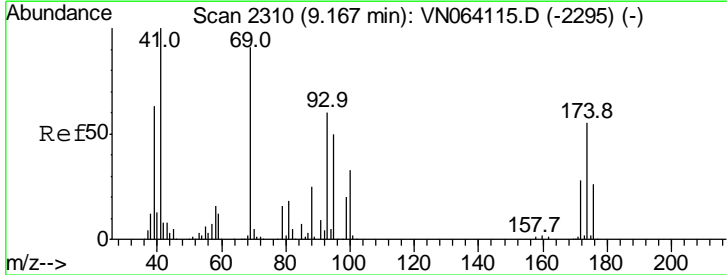
Instrument :
 MSVOA_N
 ClientSampled :
 HD-01-101520

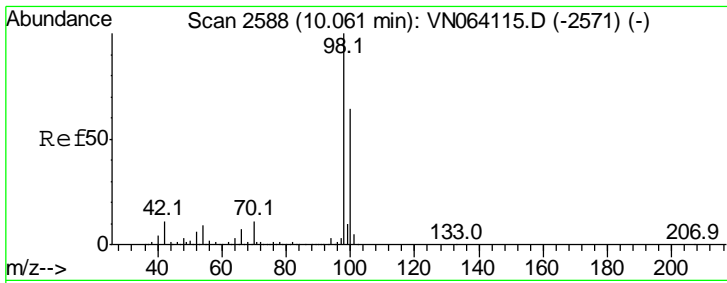
Tgt Ion	Resp	Lower	Upper
41	100		
69	0.0	71.4	107.2#
39	0.0	52.5	78.7#



#49
 1,4-Dioxane
 Concen: 5.797 ug/l
 RT: 9.24 min Scan# 2332
 Delta R.T. 0.07 min
 Lab File: VN064182.D
 Acq: 16 Oct 2020 22:17

Tgt Ion	Resp	Lower	Upper
88	100		
43	542688.2	27.2	40.8#
58	3178.9	52.6	78.8#

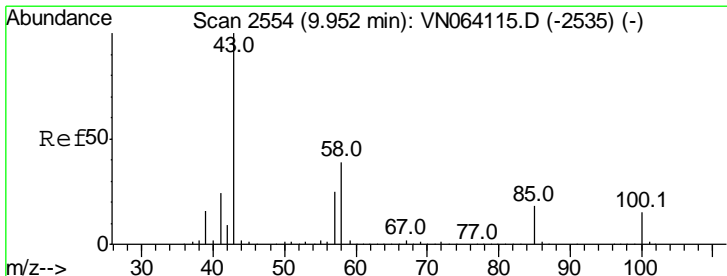
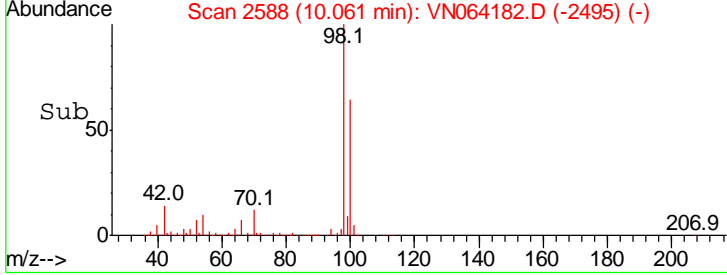
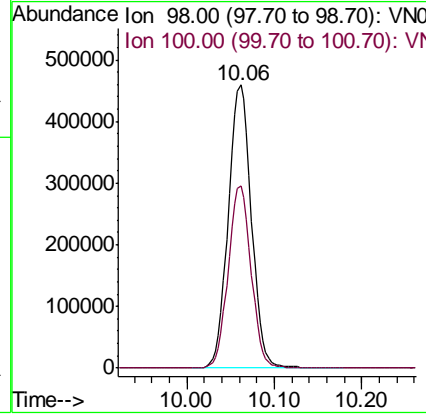
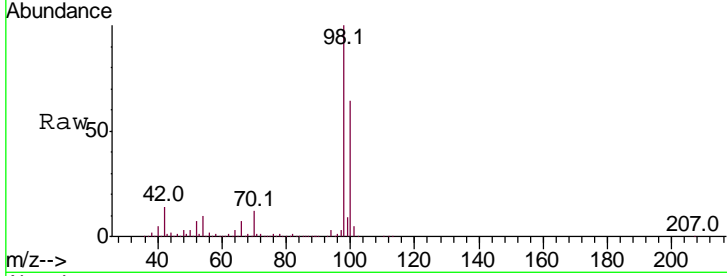




#50
 Toluene-d8
 Concen: 49.123 ug/l
 RT: 10.06 min Scan# 2588
 Delta R.T. 0.00 min
 Lab File: VN064182.D
 Acq: 16 Oct 2020 22:17

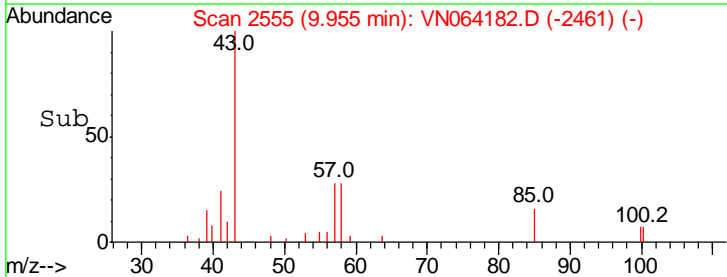
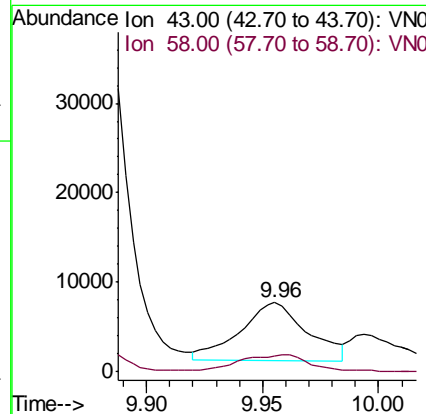
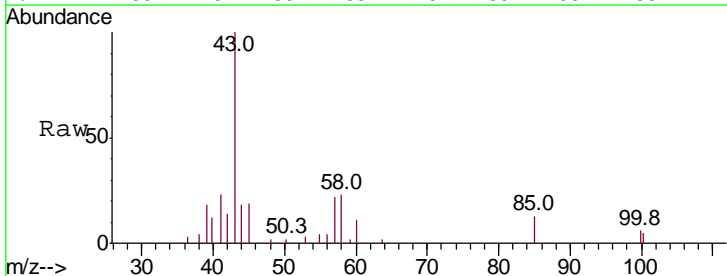
Instrument : MSVOA_N
 ClientSampled : HD-01-101520

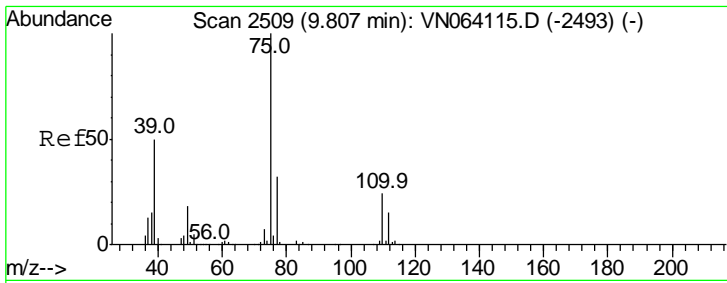
Tgt Ion	Resp	Lower	Upper
98	100		
100	63.4	50.8	76.2



#51
 4-Methyl-2-Pentanone
 Concen: 2.365 ug/l
 RT: 9.96 min Scan# 2555
 Delta R.T. 0.00 min
 Lab File: VN064182.D
 Acq: 16 Oct 2020 22:17

Tgt Ion	Resp	Lower	Upper
43	100		
58	32.8	31.2	46.8

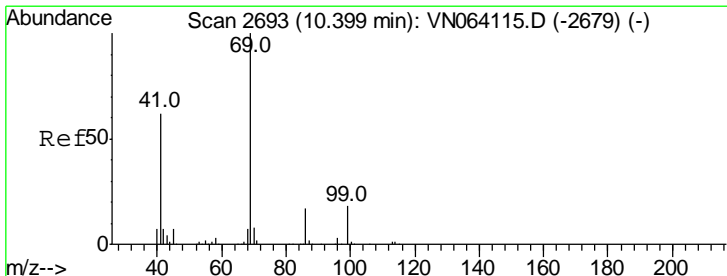
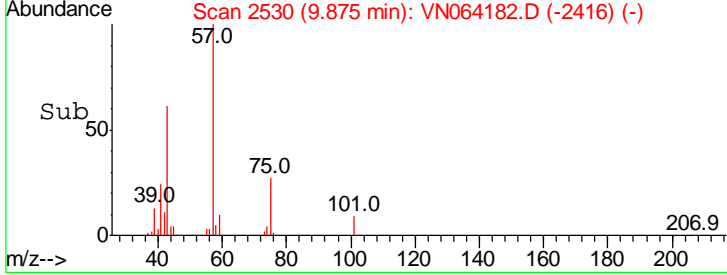
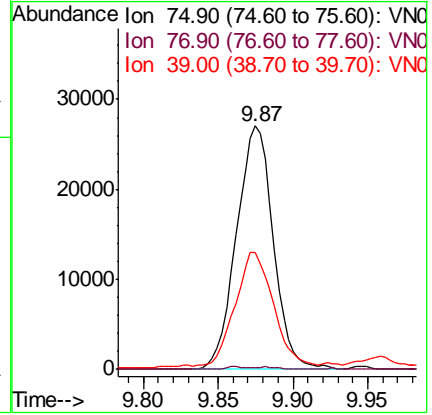
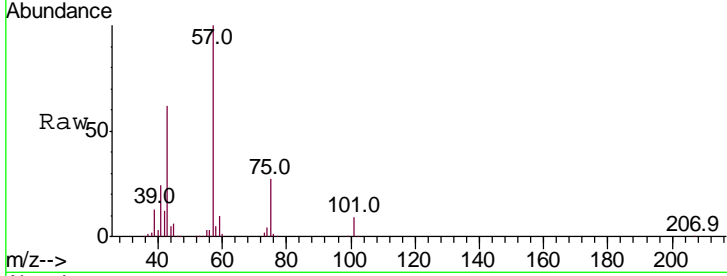




#54
 cis-1,3-Dichloropropene
 Concen: 5.885 ug/l
 RT: 9.87 min Scan# 2530
 Delta R.T. 0.07 min
 Lab File: VN064182.D
 Acq: 16 Oct 2020 22:17

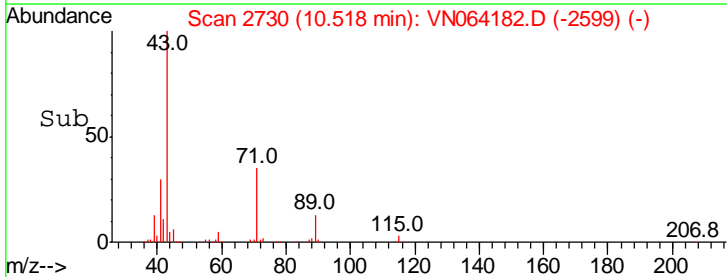
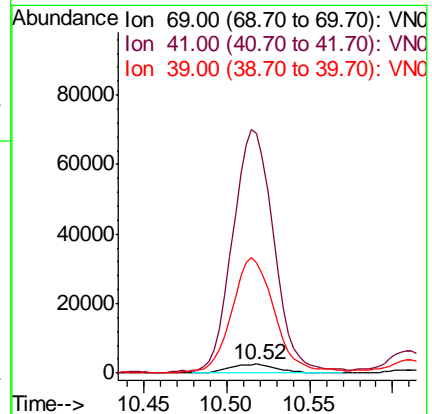
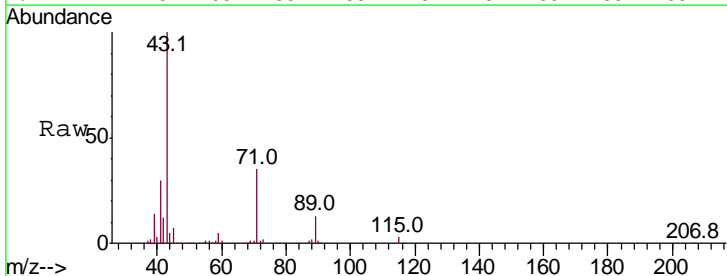
Instrument : MSVOA_N
 ClientSampled : HD-01-101520

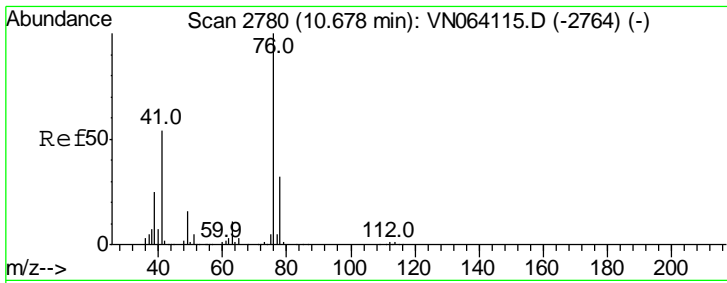
Tgt Ion	Resp	Lower	Upper
75	100		
77	0.6	25.2	37.8#
39	46.4	39.8	59.8



#56
 Ethyl methacrylate
 Concen: 3.006 ug/l
 RT: 10.52 min Scan# 2730
 Delta R.T. 0.12 min
 Lab File: VN064182.D
 Acq: 16 Oct 2020 22:17

Tgt Ion	Resp	Lower	Upper
69	100		
41	2277.8	49.3	73.9#
39	1112.2	32.7	49.1#

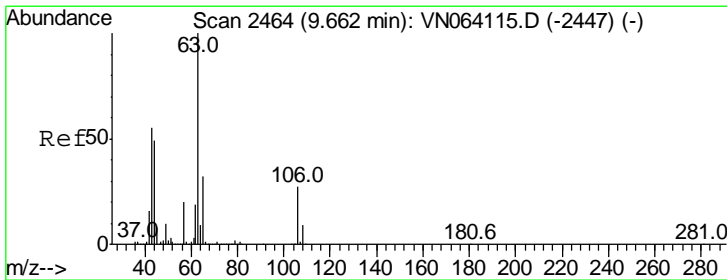
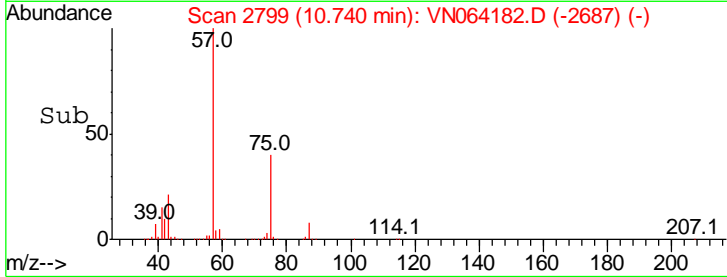
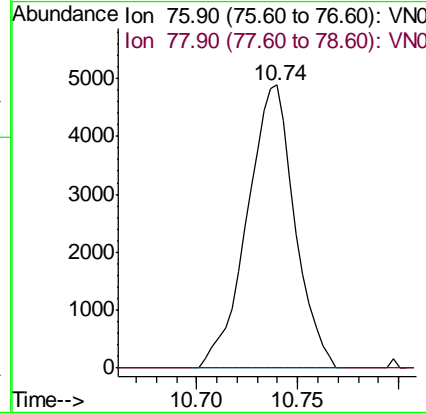
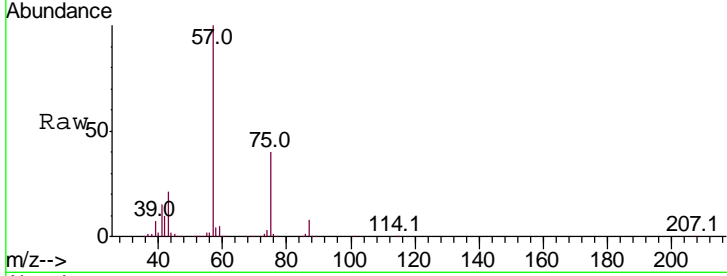




#57
 1,3-Dichloropropane
 Concen: 0.999 ug/l
 RT: 10.74 min Scan# 2799
 Delta R.T. 0.06 min
 Lab File: VN064182.D
 Acq: 16 Oct 2020 22:17

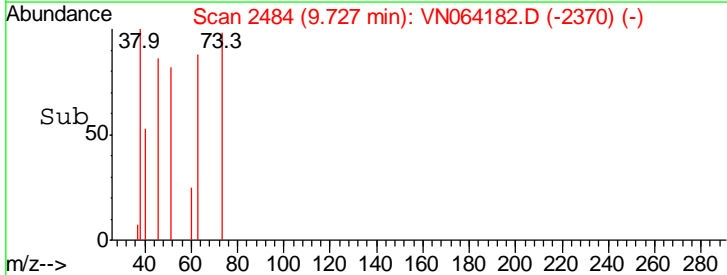
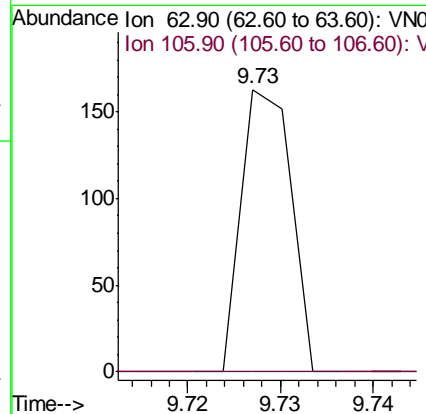
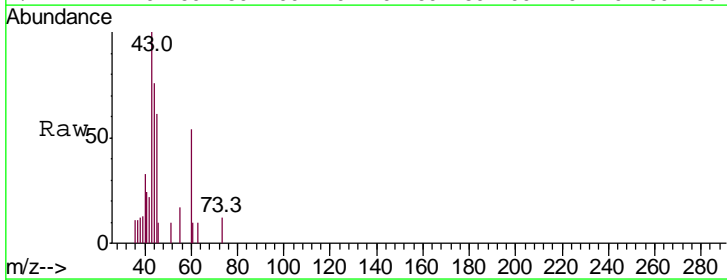
Instrument : MSVOA_N
 ClientSampleId : HD-01-101520

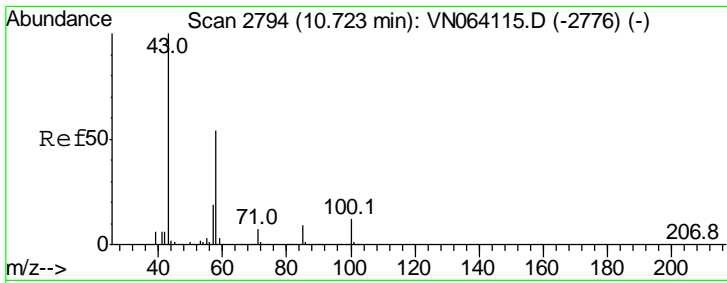
Tgt Ion: 76 Resp: 8051
 Ion Ratio Lower Upper
 76 100
 78 0.0 26.1 39.1#



#58
 2-Chloroethyl Vinyl ether
 Concen: 12.235 ug/l
 RT: 9.73 min Scan# 2484
 Delta R.T. 0.06 min
 Lab File: VN064182.D
 Acq: 16 Oct 2020 22:17

Tgt Ion: 63 Resp: 61
 Ion Ratio Lower Upper
 63 100
 106 0.0 21.8 32.6#

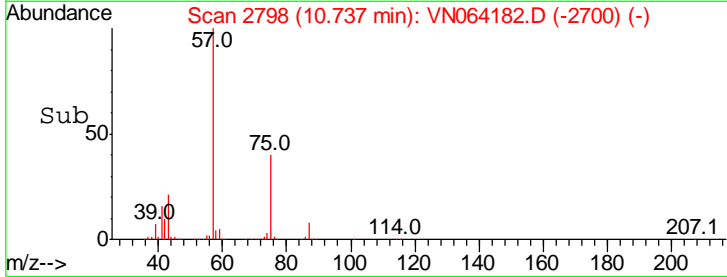
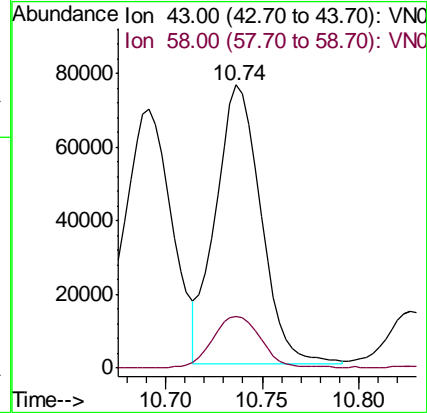
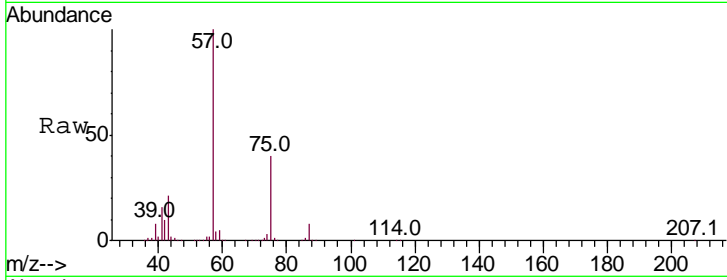




#59
 2-Hexanone
 Concen: 34.911 ug/l
 RT: 10.74 min Scan# 2798
 Delta R.T. 0.01 min
 Lab File: VN064182.D
 Acq: 16 Oct 2020 22:17

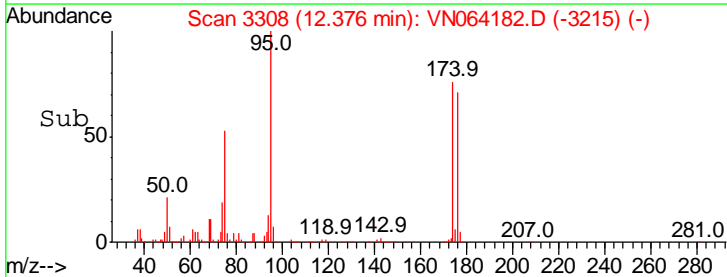
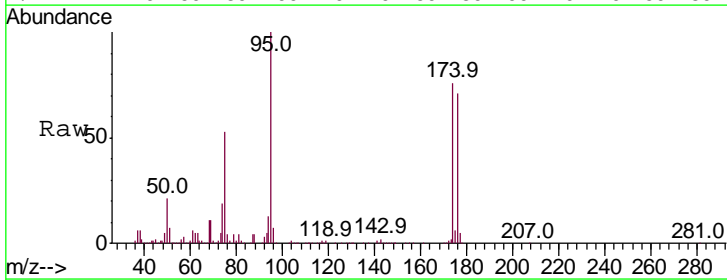
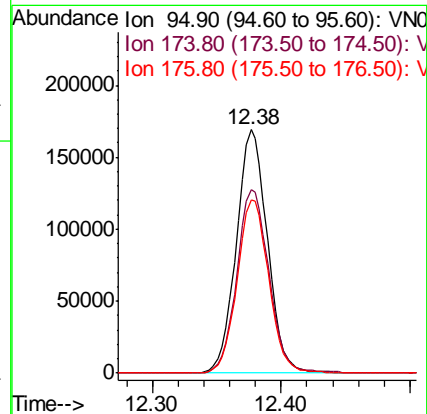
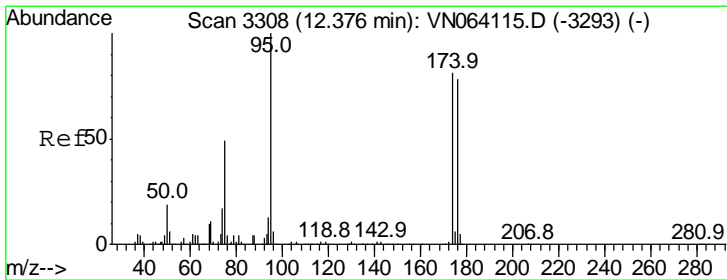
Instrument :
 MSVOA_N
 ClientSampled :
 HD-01-101520

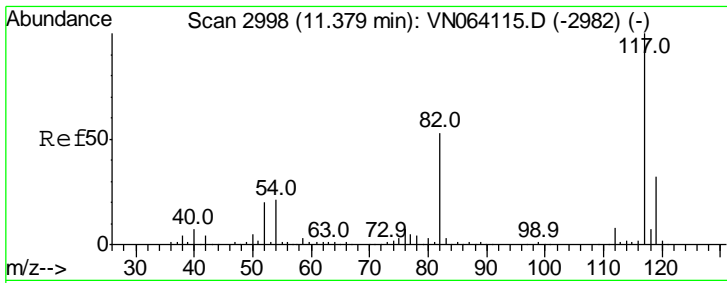
Tgt Ion: 43 Resp: 123383
 Ion Ratio Lower Upper
 43 100
 58 19.4 27.2 81.6#



#62
 4-Bromofluorobenzene
 Concen: 47.943 ug/l
 RT: 12.38 min Scan# 3308
 Delta R.T. 0.00 min
 Lab File: VN064182.D
 Acq: 16 Oct 2020 22:17

Tgt Ion: 95 Resp: 283369
 Ion Ratio Lower Upper
 95 100
 174 78.0 0.0 164.8
 176 72.9 0.0 157.8

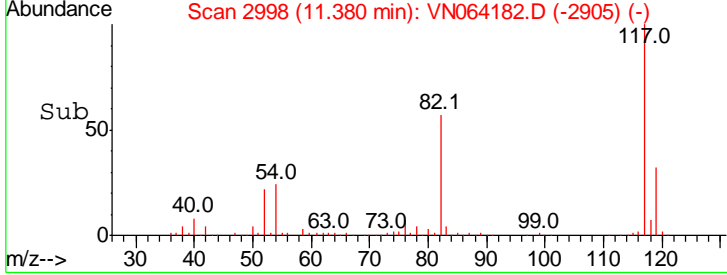
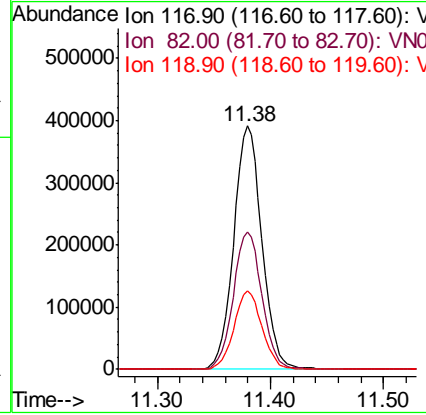
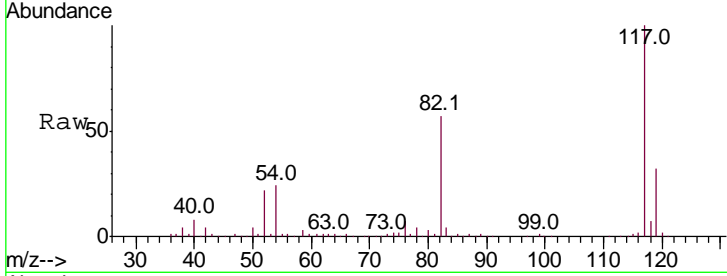




#63
 Chlorobenzene-d5
 Concen: 50.000 ug/l
 RT: 11.38 min Scan# 2998
 Delta R.T. 0.00 min
 Lab File: VN064182.D
 Acq: 16 Oct 2020 22:17

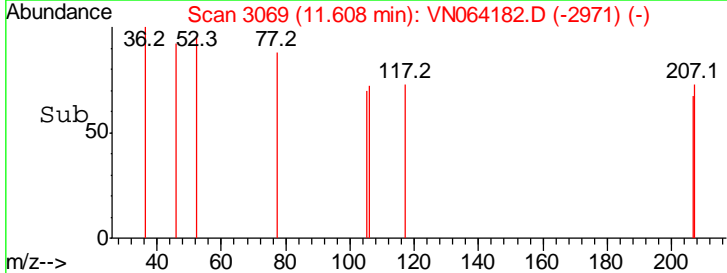
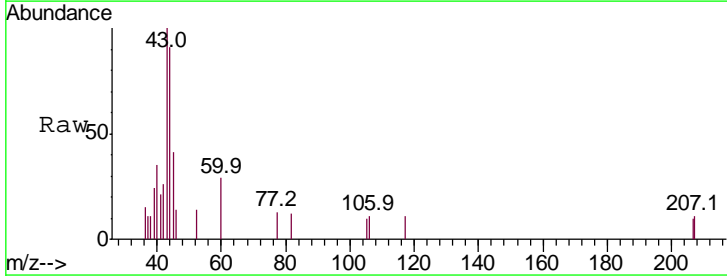
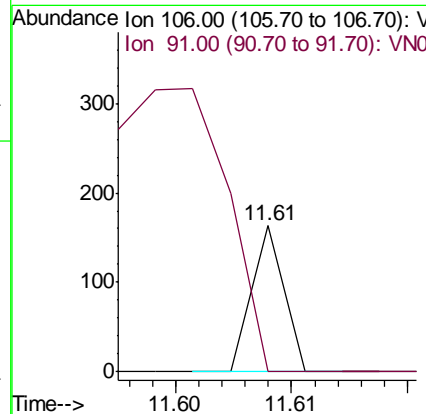
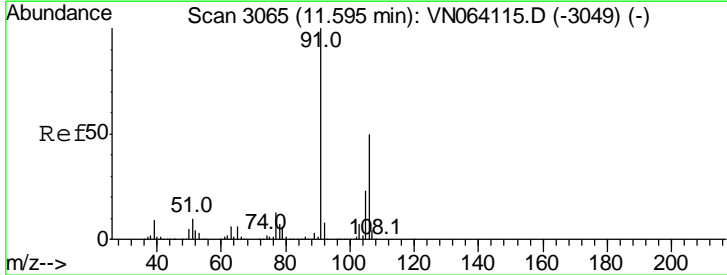
Instrument : MSVOA_N
 ClientSampled : HD-01-101520

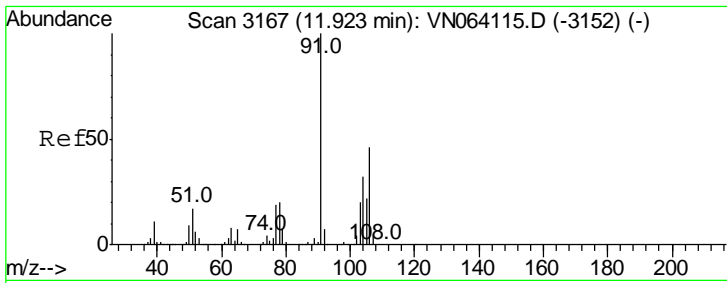
Tgt Ion	Resp	Lower	Upper
117	100		
82	56.4	42.6	63.8
119	32.1	25.5	38.3



#68
 m/p-Xylenes
 Concen: 2.195 ug/l
 RT: 11.61 min Scan# 3069
 Delta R.T. 0.01 min
 Lab File: VN064182.D
 Acq: 16 Oct 2020 22:17

Tgt Ion	Resp	Lower	Upper
106	100		
91	0.0	162.1	243.1#

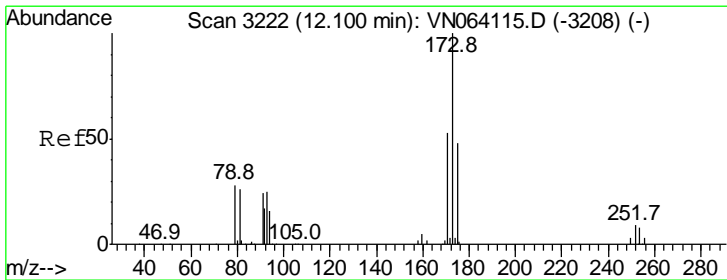
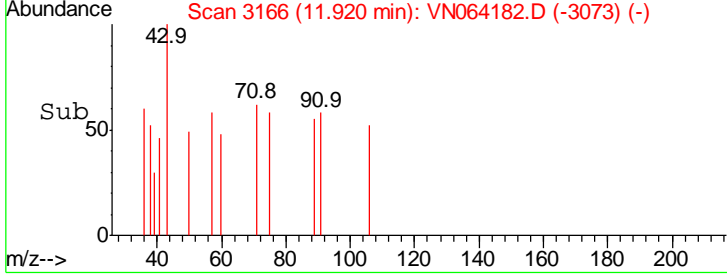
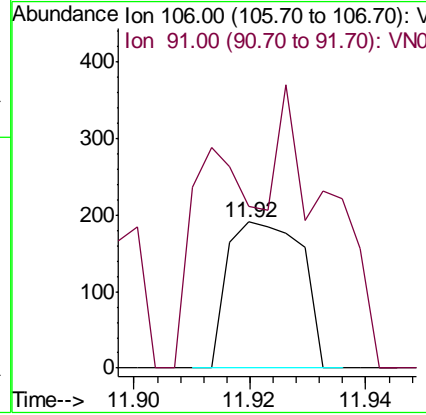
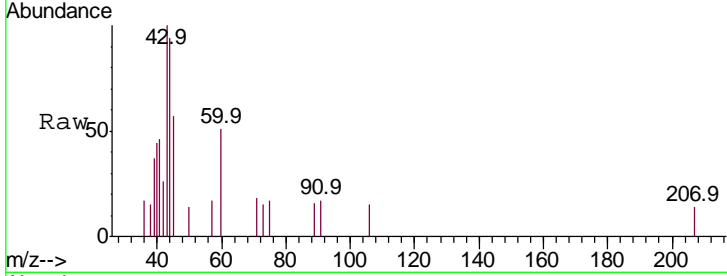




#69
 o-Xylene
 Concen: 1.600 ug/l
 RT: 11.92 min Scan# 3166
 Delta R.T. -0.00 min
 Lab File: VN064182.D
 Acq: 16 Oct 2020 22:17

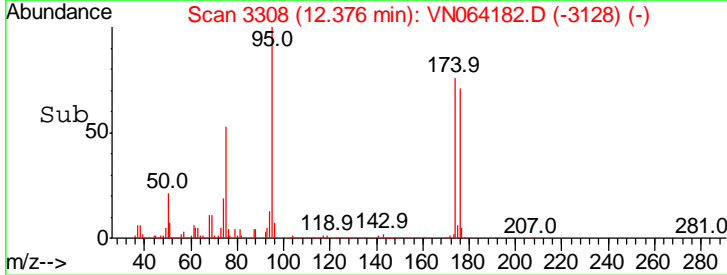
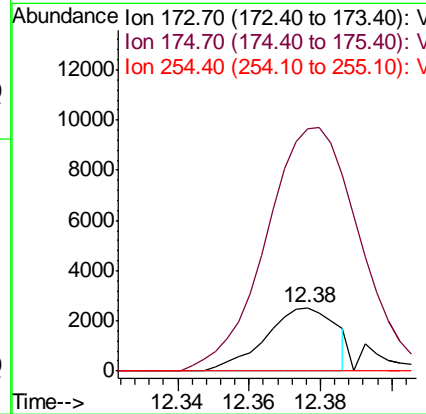
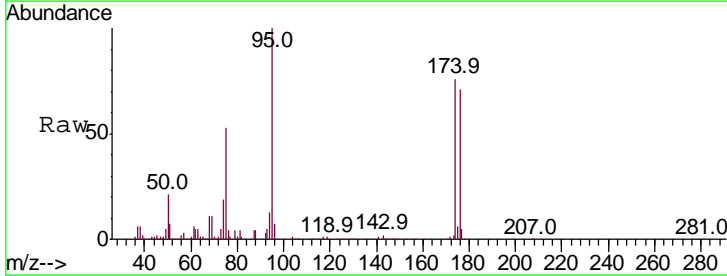
Instrument : MSVOA_N
 ClientSampled : HD-01-101520

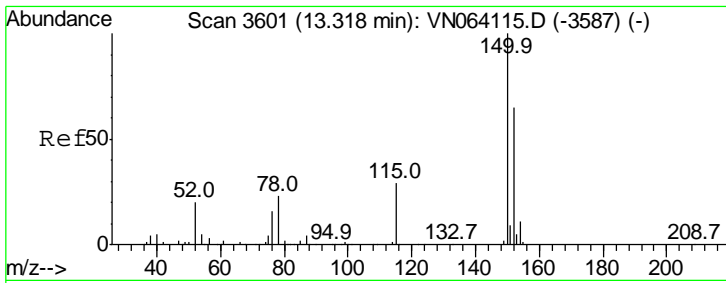
Tot Ion:106	Resp:	169
Ion Ratio	Lower	Upper
106	100	
91	137.9	107.6 322.8



#71
 Bromoform
 Concen: 2.964 ug/l
 RT: 12.38 min Scan# 3308
 Delta R.T. 0.28 min
 Lab File: VN064182.D
 Acq: 16 Oct 2020 22:17

Tgt Ion:173	Resp:	3433
Ion Ratio	Lower	Upper
173	100	
175	406.7	23.4 70.2#
254	0.0	0.1 0.1#

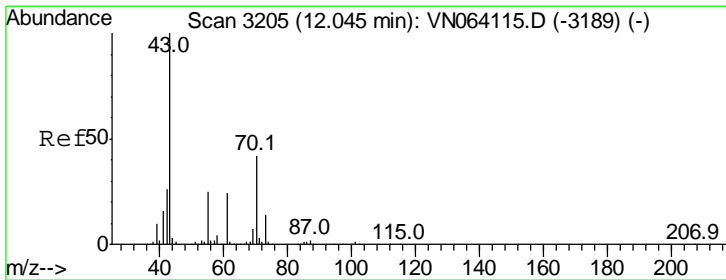
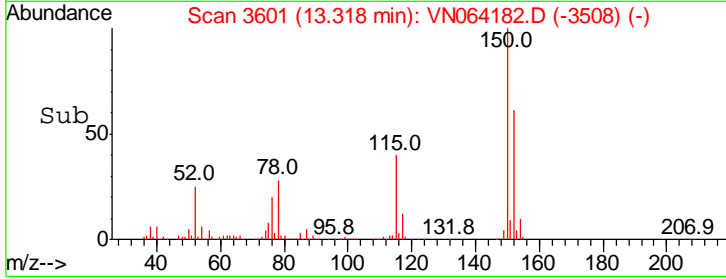
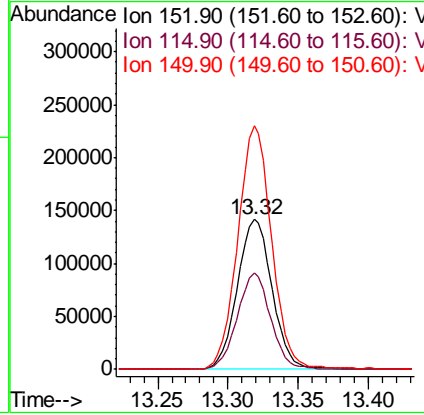
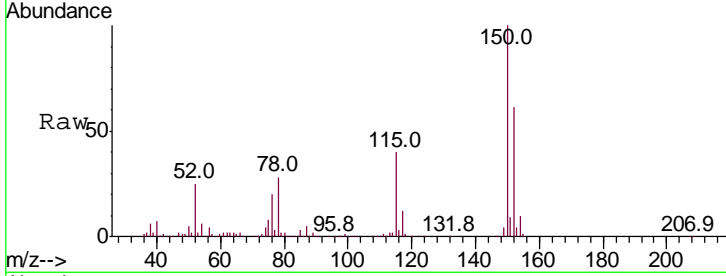




#72
 1,4-Dichlorobenzene-d4
 Concen: 50.000 ug/l
 RT: 13.32 min Scan# 3601
 Delta R.T. 0.00 min
 Lab File: VN064182.D
 Acq: 16 Oct 2020 22:17

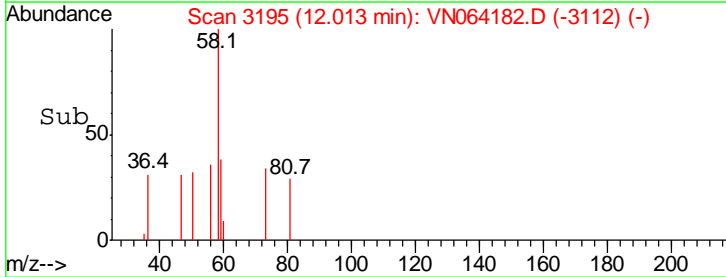
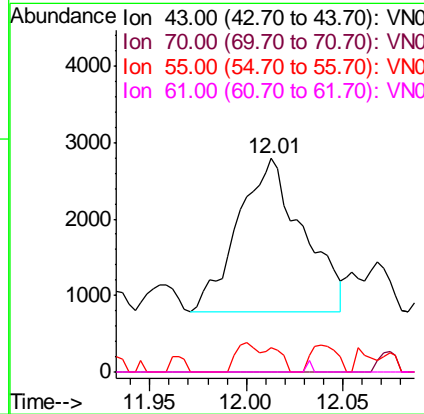
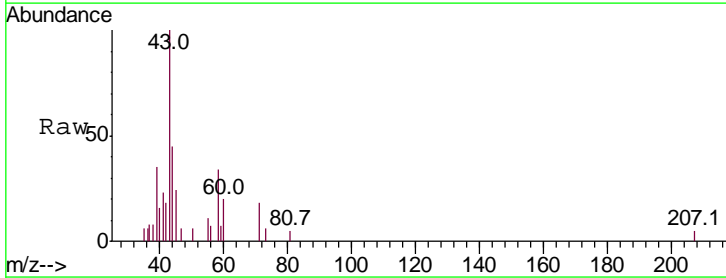
Instrument : MSVOA_N
 ClientSampleId : HD-01-101520

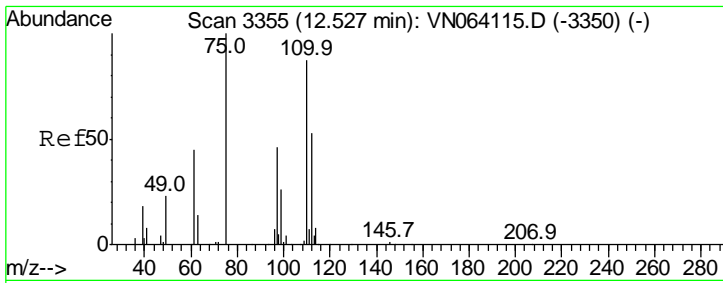
Tgt Ion	Resp	Lower	Upper
152	100		
115	61.9	29.3	87.8
150	157.5	0.0	346.0



#74
 N-amyl acetate
 Concen: 0.698 ug/l
 RT: 12.01 min Scan# 3195
 Delta R.T. -0.03 min
 Lab File: VN064182.D
 Acq: 16 Oct 2020 22:17

Tgt Ion	Resp	Lower	Upper
43	100		
70	0.0	33.2	49.8#
55	6.4	19.9	29.9#
61	0.0	18.8	28.2#

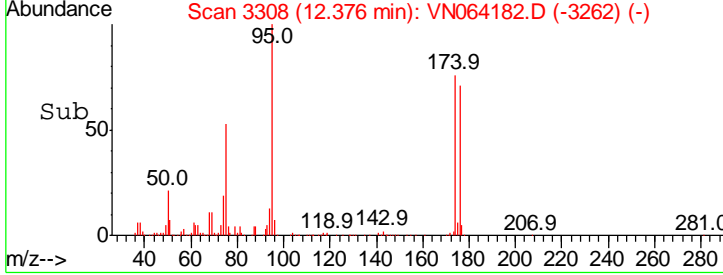
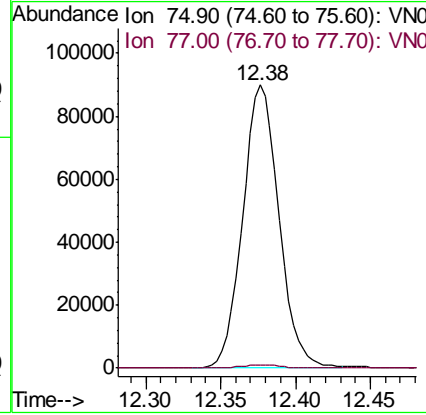
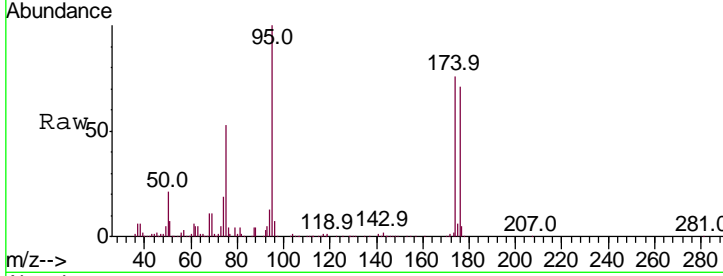




#76
 1,2,3-Trichloropropane
 Concen: 26.354 ug/l
 RT: 12.38 min Scan# 3308
 Delta R.T. -0.15 min
 Lab File: VN064182.D
 Acq: 16 Oct 2020 22:17

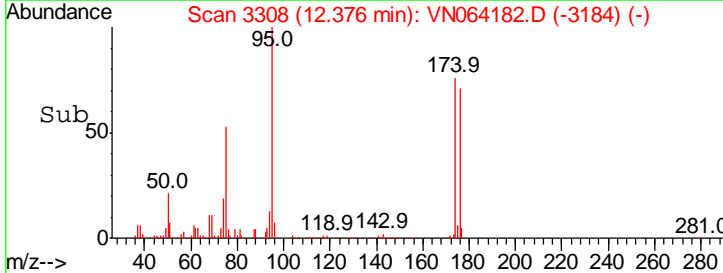
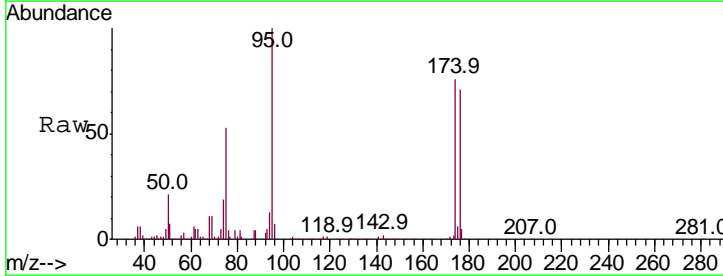
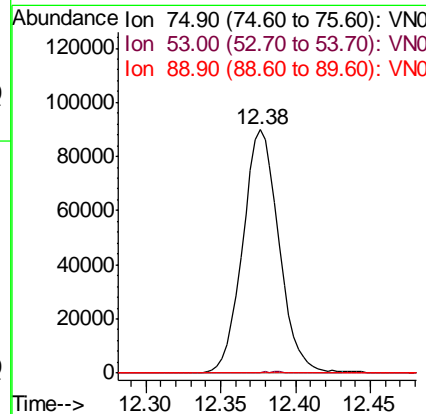
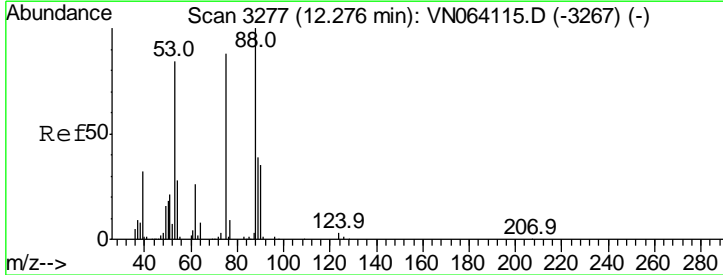
Instrument : MSVOA_N
 ClientSampled : HD-01-101520

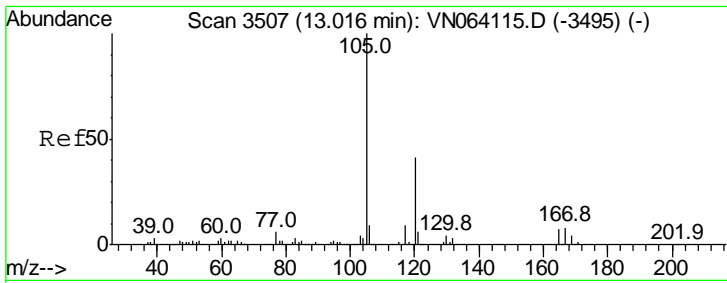
Tgt Ion	Resp	Lower	Upper
75	100		
77	1.2	0.0	0.0#



#81
 trans-1,4-Dichloro-2-butene
 Concen: 80.517 ug/l
 RT: 12.38 min Scan# 3308
 Delta R.T. 0.10 min
 Lab File: VN064182.D
 Acq: 16 Oct 2020 22:17

Tgt Ion	Resp	Lower	Upper
75	100		
53	0.3	75.7	113.5#
89	0.0	36.6	55.0#

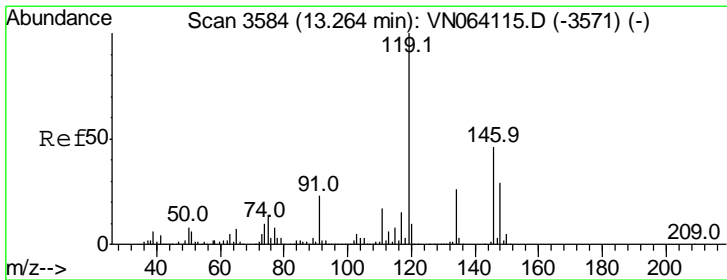
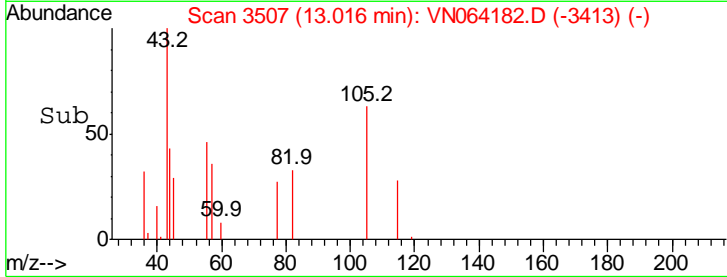
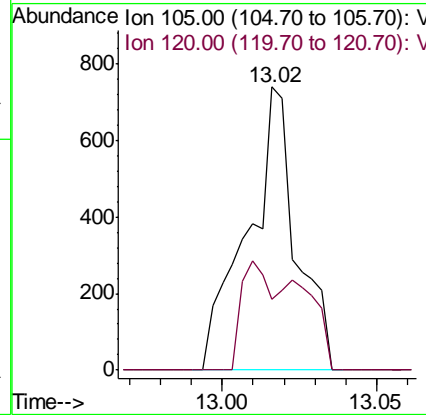
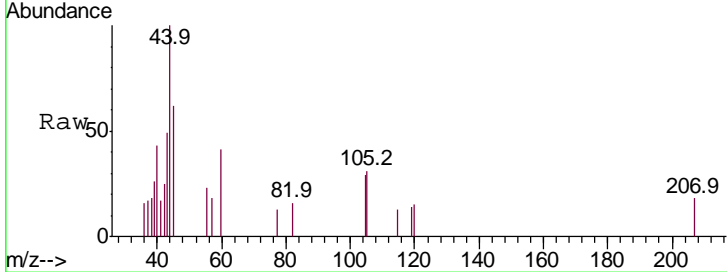




#84
 1,2,4-Trimethylbenzene
 Concen: 0.239 ug/l
 RT: 13.02 min Scan# 3507
 Delta R.T. 0.00 min
 Lab File: VN064182.D
 Acq: 16 Oct 2020 22:17

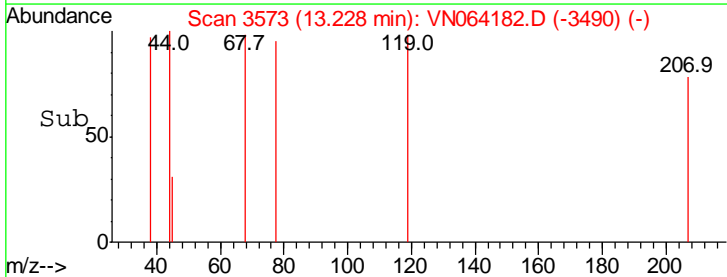
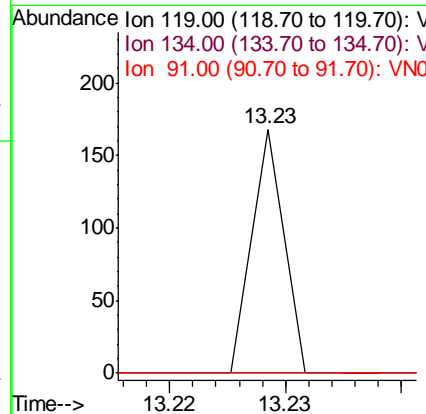
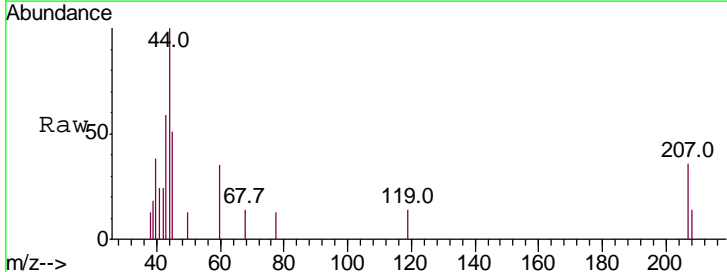
Instrument :
 MSVOA_N
 ClientSampled :
 HD-01-101520

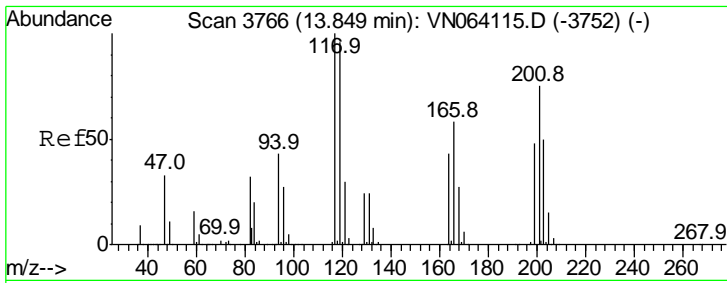
Tgt Ion	Resp	Lower	Upper
105	100		
120	22.6	22.8	68.4#



#86
 p-Isopropyltoluene
 Concen: 0.664 ug/l
 RT: 13.23 min Scan# 3573
 Delta R.T. -0.03 min
 Lab File: VN064182.D
 Acq: 16 Oct 2020 22:17

Tgt Ion	Resp	Lower	Upper
119	100		
134	0.0	13.2	39.5#
91	0.0	12.0	36.1#

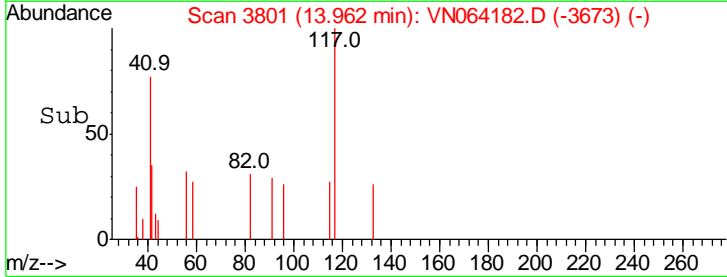
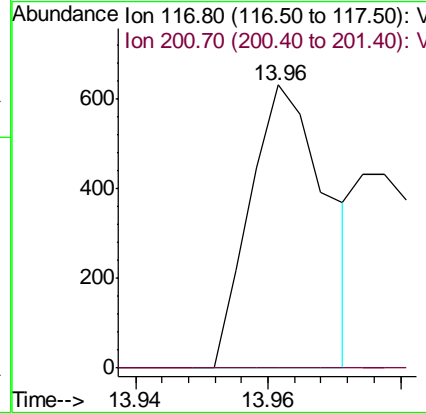
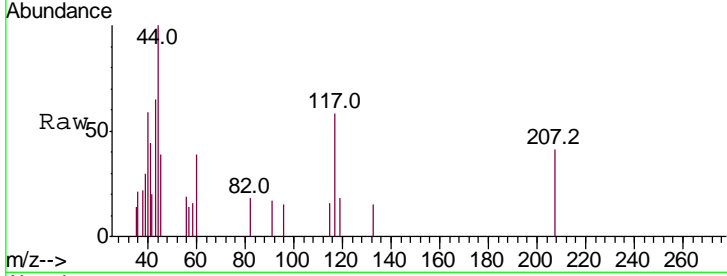




#90
 Hexachloroethane
 Concen: 0.201 ug/l
 RT: 13.96 min Scan# 3801
 Delta R.T. 0.11 min
 Lab File: VN064182.D
 Acq: 16 Oct 2020 22:17

Instrument : MSVOA_N
 ClientSampled : HD-01-101520

Tgt Ion	Resp	Lower	Upper
117	100		
201	0.0	37.4	112.2#



#95
 Naphthalene
 Concen: 3.816 ug/l
 RT: 15.10 min Scan# 4155
 Delta R.T. -0.00 min
 Lab File: VN064182.D
 Acq: 16 Oct 2020 22:17

Tgt Ion	Resp	Lower	Upper
128	100		
127	0.0	10.2	15.4#
129	0.0	8.5	12.7#

