

Data Path : Z:\voasrv\HPCHEM1\MSVOA_N\Data\VN101921\
 Data File : VN069021.D
 Acq On : 19 Oct 2021 13:01
 Operator : JC/MD
 Sample : VN1019WBL01
 Misc : 5.00mL/MSVOA_N/WATER
 ALS Vial : 4 Sample Multiplier: 1

Instrument :
 MSVOA_N
 ClientSampled :

Quant Time: Oct 20 05:47:27 2021
 Quant Method : Z:\voasrv\HPCHEM1\MSVOA_N\methods\82N101221W.M
 Quant Title : SW846 8260
 QLast Update : Wed Oct 13 05:44:40 2021
 Response via : Initial Calibration

Compound	R.T.	QIon	Response	Conc	Units	Dev(Min)

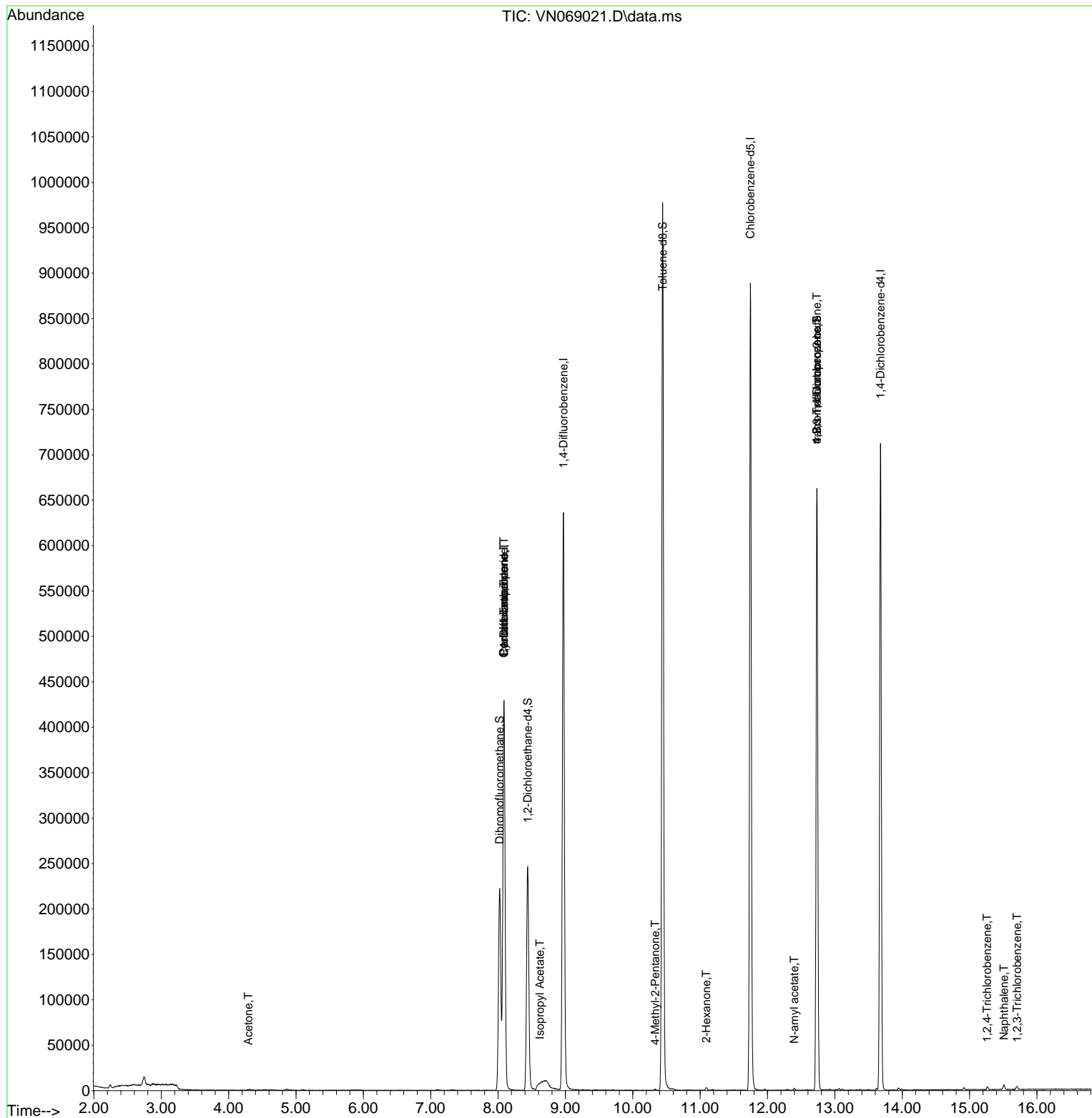
Internal Standards						
1) Pentafluorobenzene	8.088	168	325856	50.000	ug/l	0.00
34) 1,4-Difluorobenzene	8.971	114	566548	50.000	ug/l	0.00
63) Chlorobenzene-d5	11.746	117	522933	50.000	ug/l	0.00
72) 1,4-Dichlorobenzene-d4	13.678	152	189416	50.000	ug/l	0.00
System Monitoring Compounds						
33) 1,2-Dichloroethane-d4	8.440	65	210440	48.982	ug/l	0.00
Spiked Amount	50.000	Range 61 - 141	Recovery	=	97.960%	
35) Dibromofluoromethane	8.024	113	167622	50.853	ug/l	0.00
Spiked Amount	50.000	Range 69 - 133	Recovery	=	101.700%	
50) Toluene-d8	10.443	98	701719	53.206	ug/l	0.00
Spiked Amount	50.000	Range 65 - 126	Recovery	=	106.420%	
62) 4-Bromofluorobenzene	12.733	95	244169	49.070	ug/l	0.00
Spiked Amount	50.000	Range 58 - 135	Recovery	=	98.140%	
Target Compounds						
					Qvalue	
16) Acetone	4.293	43	679	0.424	ug/l #	44
31) Cyclohexane	8.086	56	7797	1.167	ug/l #	19
36) 1,1-Dichloropropene	8.086	75	26530	5.482	ug/l #	50
38) Carbon Tetrachloride	8.088	117	34478	6.487	ug/l #	15
43) Isopropyl Acetate	8.619	43	8272	0.938	ug/l #	55
51) 4-Methyl-2-Pentanone	10.333	43	1457	0.285	ug/l #	58
59) 2-Hexanone	11.089	43	2486	0.678	ug/l	89
74) N-amyl acetate	12.398	43	1436	0.240	ug/l #	81
76) 1,2,3-Trichloropropane	12.733	75	126550	31.400	ug/l #	1
81) trans-1,4-Dichloro-2-b...	12.733	75	126550	75.123	ug/l #	12
93) 1,2,4-Trichlorobenzene	15.263	180	1280	2.983	ug/l	92
95) Naphthalene	15.512	128	6129	4.456	ug/l #	92
96) 1,2,3-Trichlorobenzene	15.705	180	1549	3.000	ug/l	92

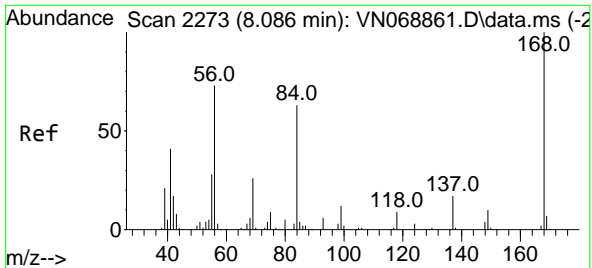
(#) = qualifier out of range (m) = manual integration (+) = signals summed

Data Path : Z:\voasrv\HPCHEM1\MSVOA_N\Data\VN101921\
 Data File : VN069021.D
 Acq On : 19 Oct 2021 13:01
 Operator : JC/MD
 Sample : VN1019WBL01
 Misc : 5.00mL/MSVOA_N/WATER
 ALS Vial : 4 Sample Multiplier: 1

Instrument :
 MSVOA_N
 ClientSampled :

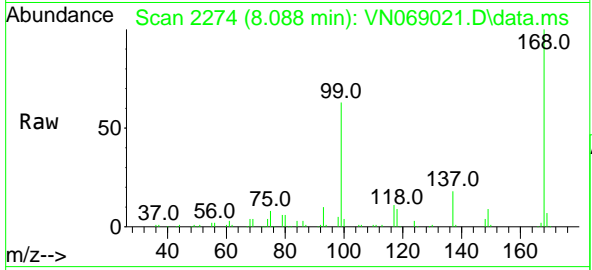
Quant Time: Oct 20 05:47:27 2021
 Quant Method : Z:\voasrv\HPCHEM1\MSVOA_N\methods\82N101221W.M
 Quant Title : SW846 8260
 QLast Update : Wed Oct 13 05:44:40 2021
 Response via : Initial Calibration



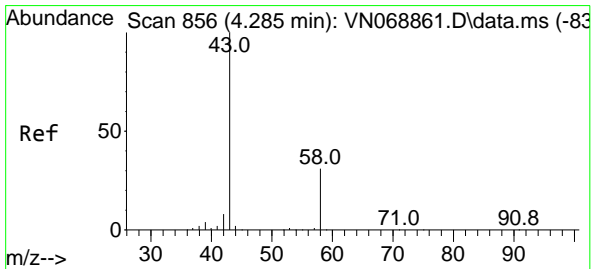
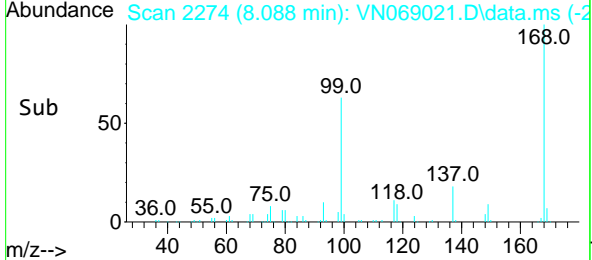
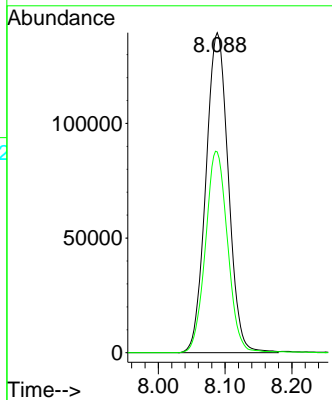


#1
 Pentafluorobenzene
 Concen: 50.000 ug/l
 RT: 8.088 min Scan# 2274
 Delta R.T. 0.002 min
 Lab File: VN069021.D
 Acq: 19 Oct 2021 13:01

Instrument :
 MSVOA_N
 ClientSampled :

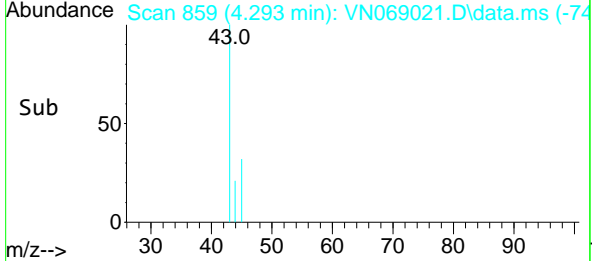
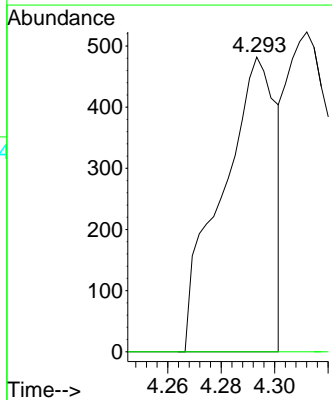
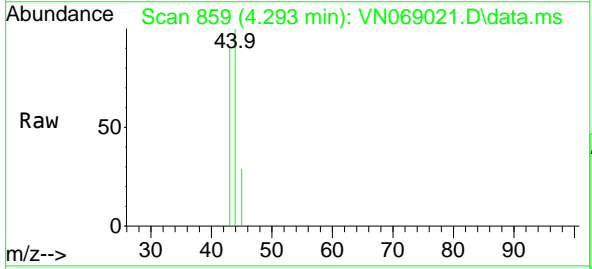


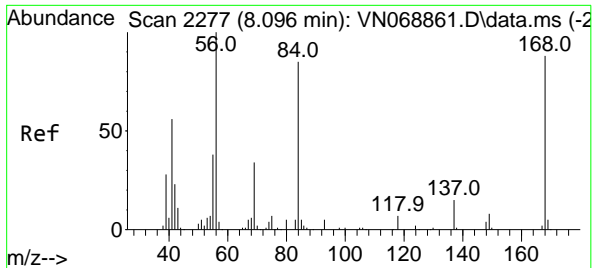
Tgt Ion:168 Resp: 325856
 Ion Ratio Lower Upper
 168 100
 99 62.8 48.9 73.3



#16
 Acetone
 Concen: 0.424 ug/l
 RT: 4.293 min Scan# 859
 Delta R.T. 0.008 min
 Lab File: VN069021.D
 Acq: 19 Oct 2021 13:01

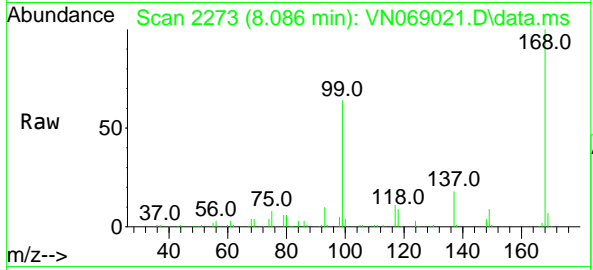
Tgt Ion: 43 Resp: 679
 Ion Ratio Lower Upper
 43 100
 58 0.0 24.5 36.7#



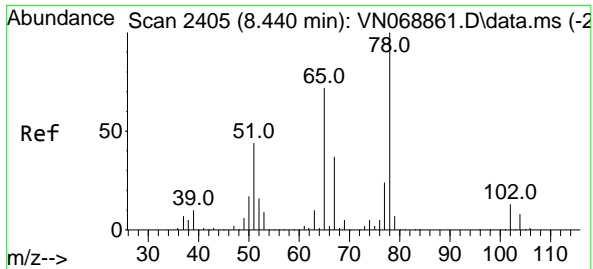
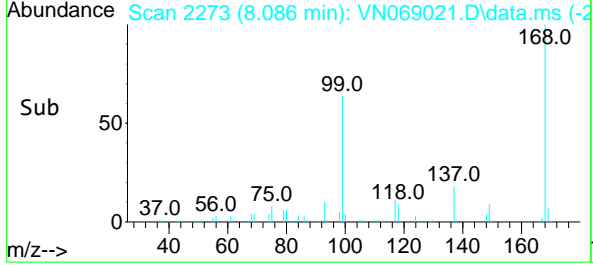
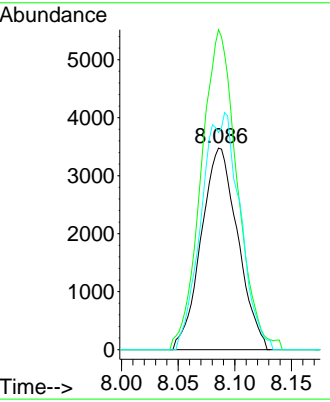


#31
 Cyclohexane
 Concen: 1.167 ug/l
 RT: 8.086 min Scan# 2273
 Delta R.T. -0.010 min
 Lab File: VN069021.D
 Acq: 19 Oct 2021 13:01

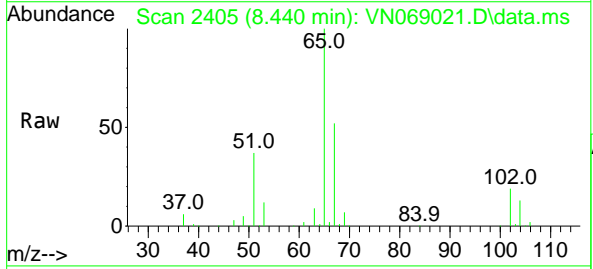
Instrument :
 MSVOA_N
 ClientSampled :



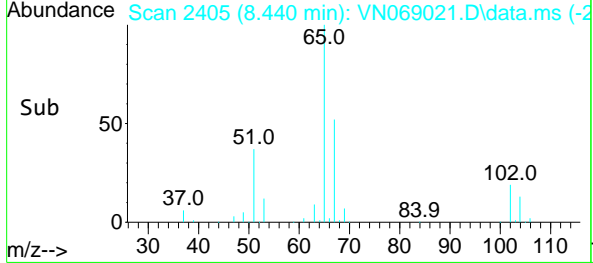
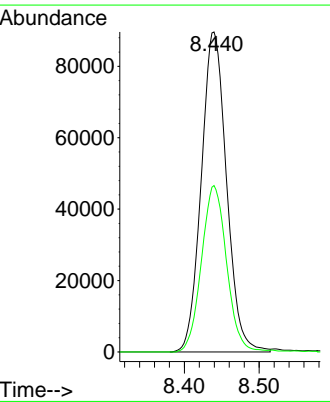
Tgt Ion: 56 Resp: 7797
 Ion Ratio Lower Upper
 56 100
 69 158.7 26.9 40.3#
 84 107.7 67.6 101.4#

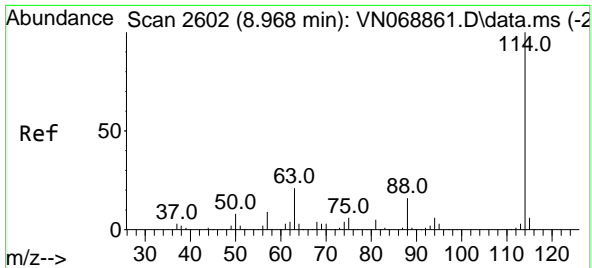


#33
 1,2-Dichloroethane-d4
 Concen: 48.982 ug/l
 RT: 8.440 min Scan# 2405
 Delta R.T. -0.000 min
 Lab File: VN069021.D
 Acq: 19 Oct 2021 13:01



Tgt Ion: 65 Resp: 210440
 Ion Ratio Lower Upper
 65 100
 67 51.6 0.0 103.8

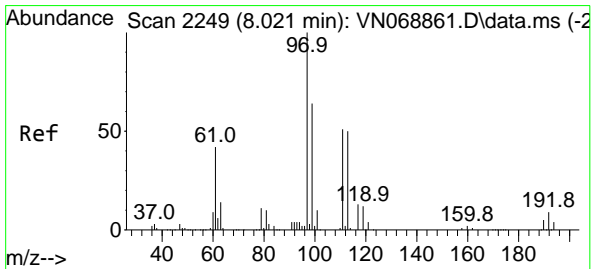
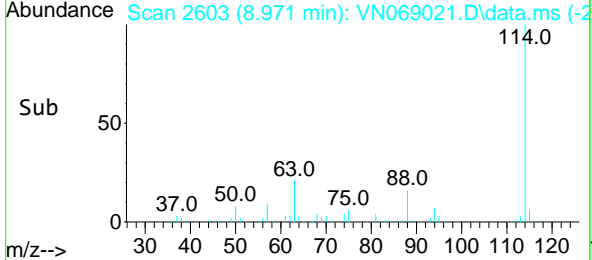
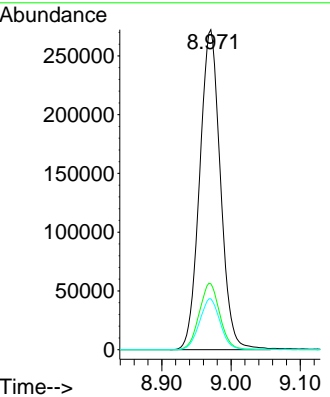
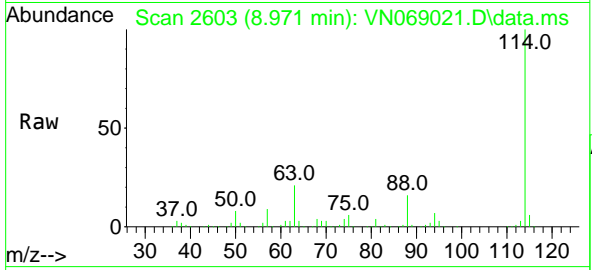




#34
 1,4-Difluorobenzene
 Concen: 50.000 ug/l
 RT: 8.971 min Scan# 2603
 Delta R.T. 0.003 min
 Lab File: VN069021.D
 Acq: 19 Oct 2021 13:01

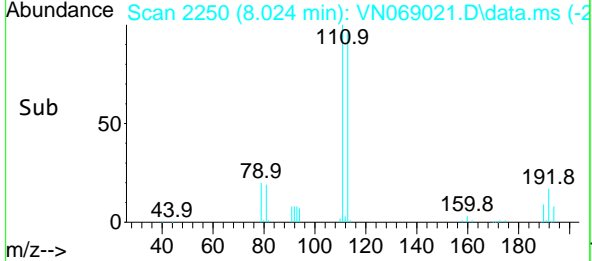
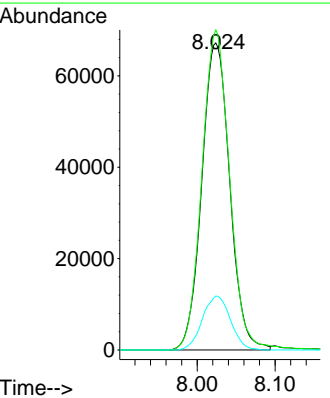
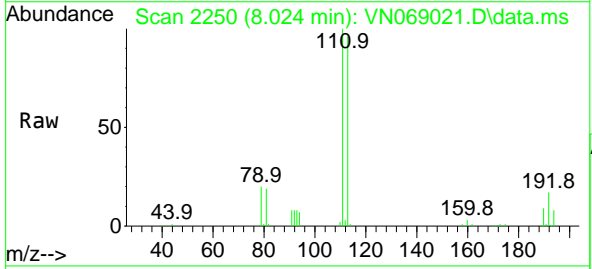
Instrument :
 MSVOA_N
 ClientSampled :

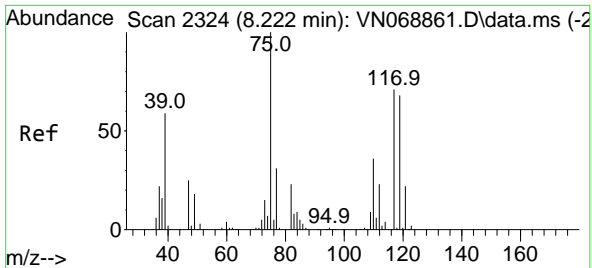
Tgt Ion	Resp	Lower	Upper
114	100		
63	20.6	0.0	42.6
88	15.9	0.0	32.0



#35
 Dibromofluoromethane
 Concen: 50.853 ug/l
 RT: 8.024 min Scan# 2250
 Delta R.T. 0.003 min
 Lab File: VN069021.D
 Acq: 19 Oct 2021 13:01

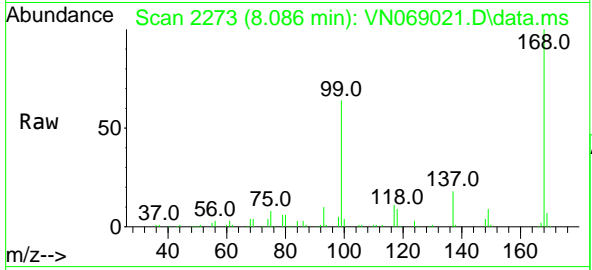
Tgt Ion	Resp	Lower	Upper
113	100		
111	103.4	83.2	124.8
192	17.6	15.0	22.4





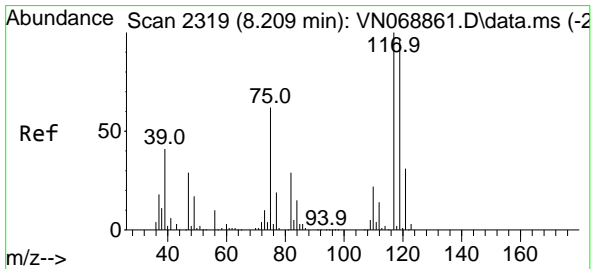
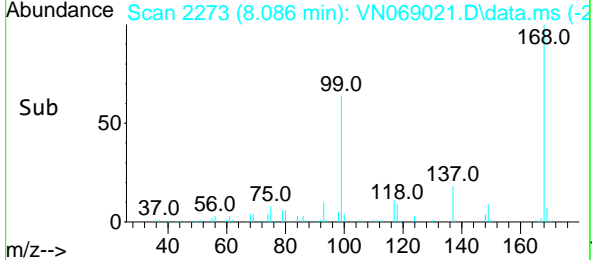
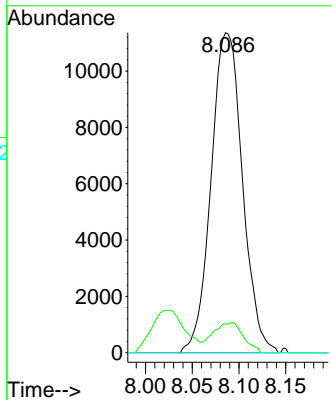
#36
 1,1-Dichloropropene
 Concen: 5.482 ug/l
 RT: 8.086 min Scan# 2273
 Delta R.T. -0.137 min
 Lab File: VN069021.D
 Acq: 19 Oct 2021 13:01

Instrument :
 MSVOA_N
 ClientSampled :

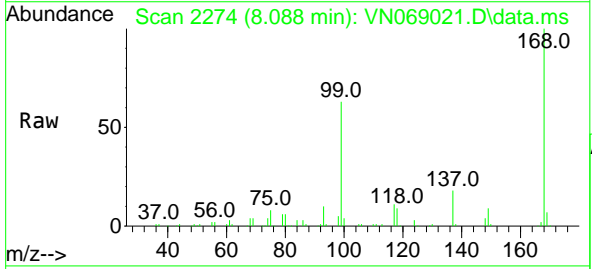


Tgt Ion: 75 Resp: 26530

Ion	Ratio	Lower	Upper
75	100		
110	9.3	17.9	53.8#
77	0.0	24.7	37.1#

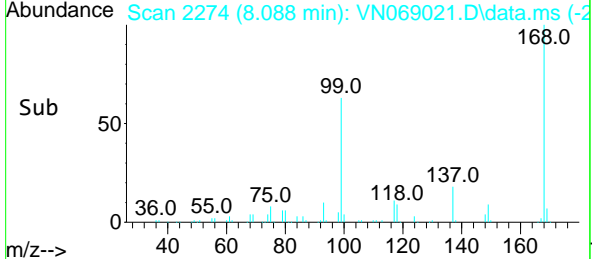
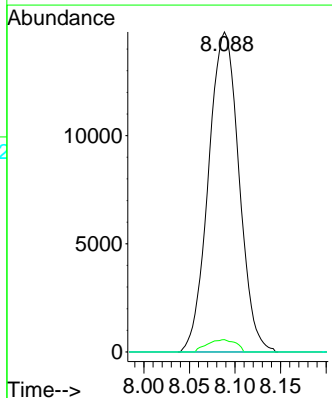


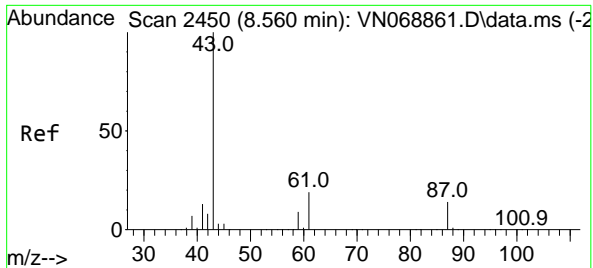
#38
 Carbon Tetrachloride
 Concen: 6.487 ug/l
 RT: 8.088 min Scan# 2274
 Delta R.T. -0.121 min
 Lab File: VN069021.D
 Acq: 19 Oct 2021 13:01



Tgt Ion: 117 Resp: 34478

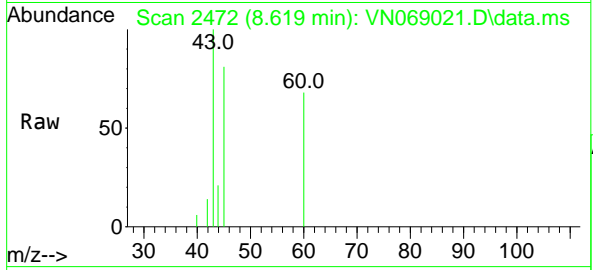
Ion	Ratio	Lower	Upper
117	100		
119	3.9	76.9	115.3#
121	0.0	24.6	37.0#





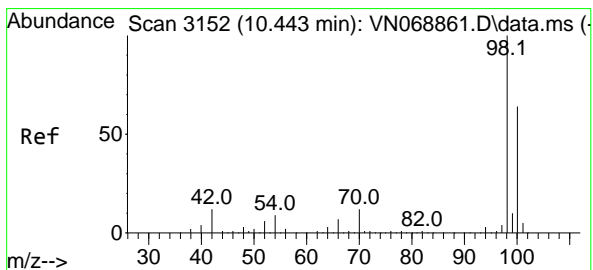
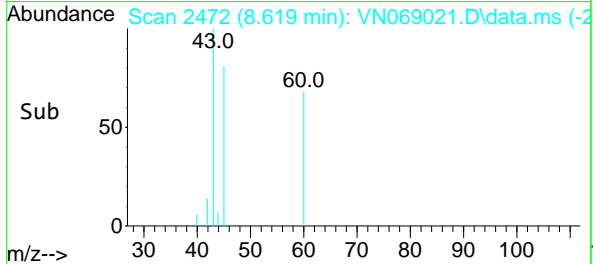
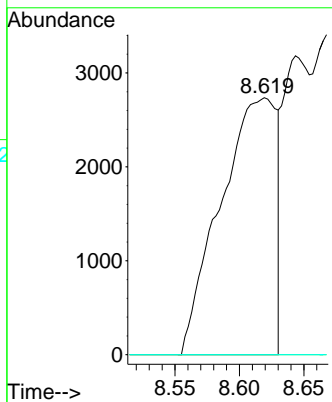
#43
 Isopropyl Acetate
 Concen: 0.938 ug/l
 RT: 8.619 min Scan# 2472
 Delta R.T. 0.059 min
 Lab File: VN069021.D
 Acq: 19 Oct 2021 13:01

Instrument :
 MSVOA_N
 ClientSampled :



Tgt Ion: 43 Resp: 8272

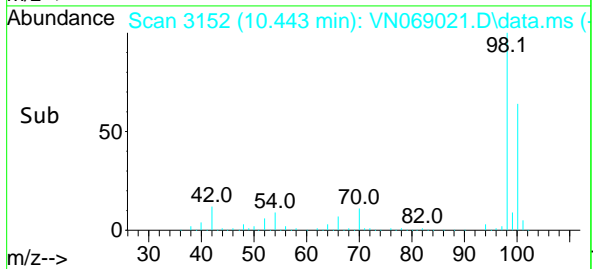
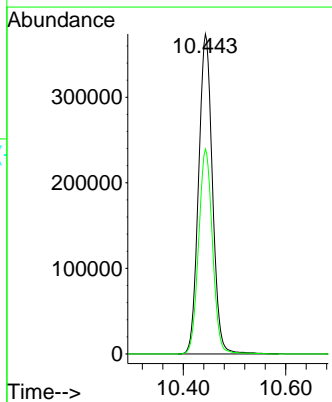
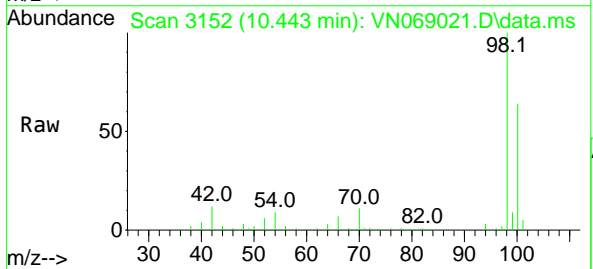
Ion	Ratio	Lower	Upper
43	100		
61	0.0	20.4	30.6#
87	0.0	10.7	16.1#

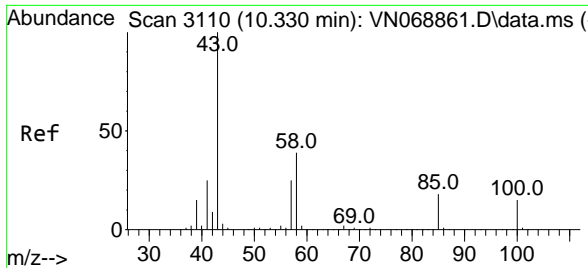


#50
 Toluene-d8
 Concen: 53.206 ug/l
 RT: 10.443 min Scan# 3152
 Delta R.T. -0.000 min
 Lab File: VN069021.D
 Acq: 19 Oct 2021 13:01

Tgt Ion: 98 Resp: 701719

Ion	Ratio	Lower	Upper
98	100		
100	63.9	51.5	77.3

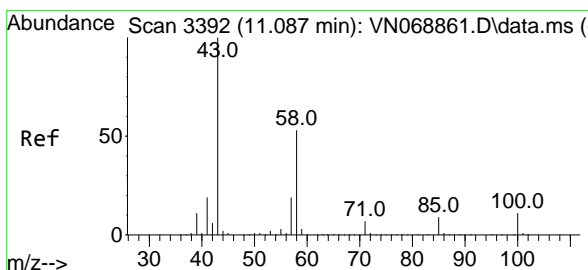
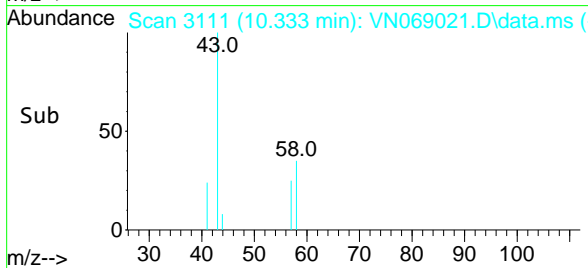
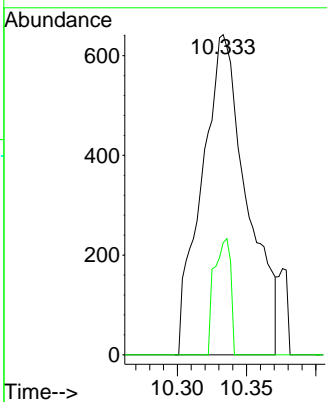
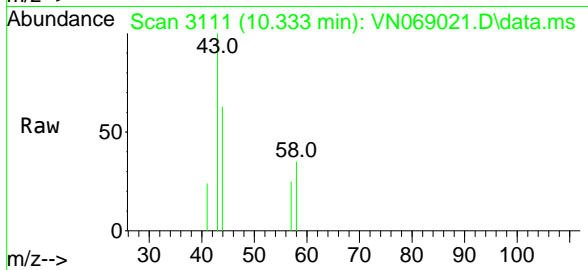




#51
 4-Methyl-2-Pentanone
 Concen: 0.285 ug/l
 RT: 10.333 min Scan# 3111
 Delta R.T. 0.003 min
 Lab File: VN069021.D
 Acq: 19 Oct 2021 13:01

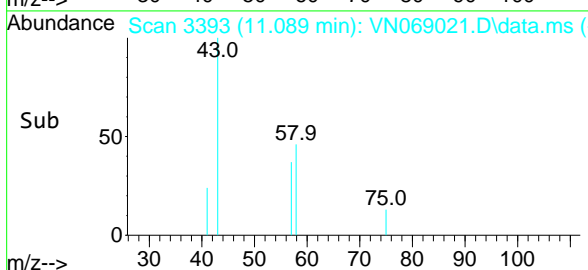
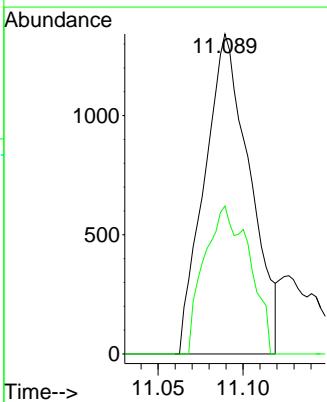
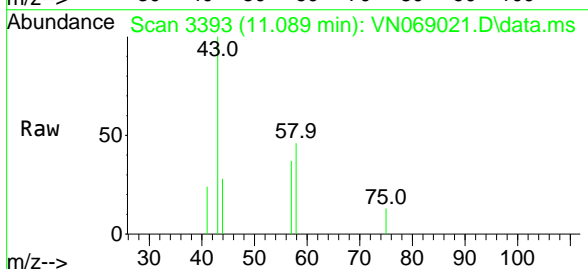
Instrument :
 MSVOA_N
 ClientSampled :

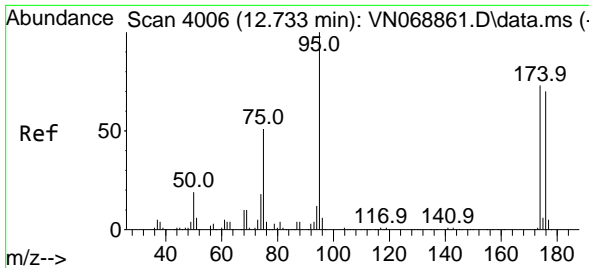
Tgt Ion: 43 Resp: 1457
 Ion Ratio Lower Upper
 43 100
 58 13.1 31.0 46.4#



#59
 2-Hexanone
 Concen: 0.678 ug/l
 RT: 11.089 min Scan# 3393
 Delta R.T. 0.003 min
 Lab File: VN069021.D
 Acq: 19 Oct 2021 13:01

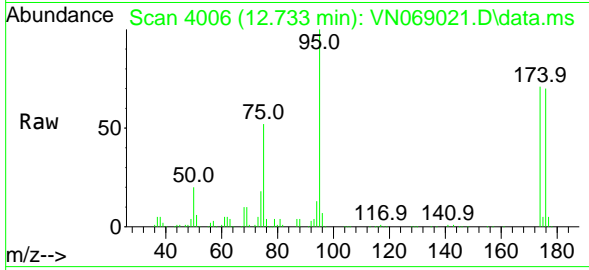
Tgt Ion: 43 Resp: 2486
 Ion Ratio Lower Upper
 43 100
 58 46.2 26.9 80.7





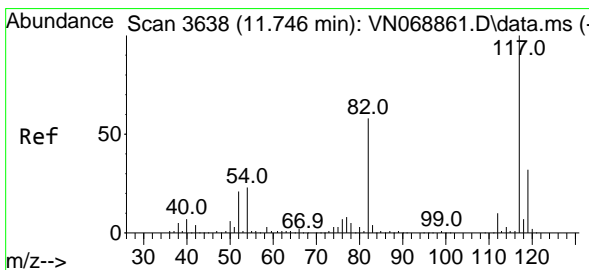
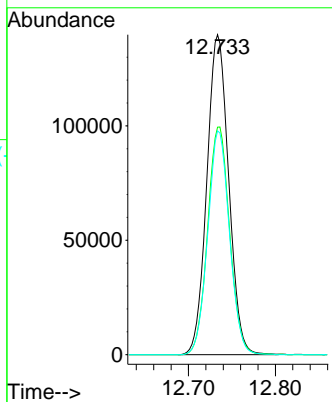
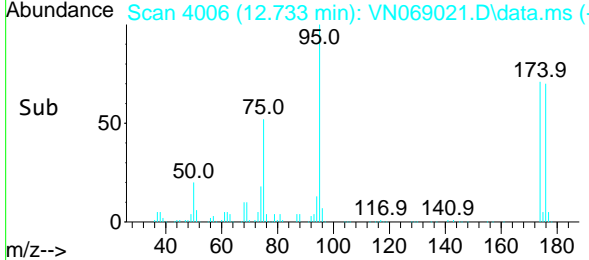
#62
 4-Bromofluorobenzene
 Concen: 49.070 ug/l
 RT: 12.733 min Scan# 4006
 Delta R.T. -0.000 min
 Lab File: VN069021.D
 Acq: 19 Oct 2021 13:01

Instrument :
 MSVOA_N
 ClientSampled :

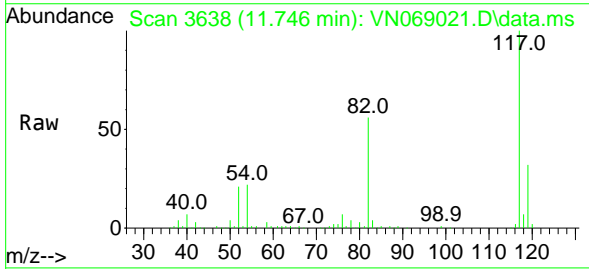


Tgt Ion: 95 Resp: 244169

Ion	Ratio	Lower	Upper
95	100		
174	71.8	0.0	144.8
176	69.3	0.0	140.0

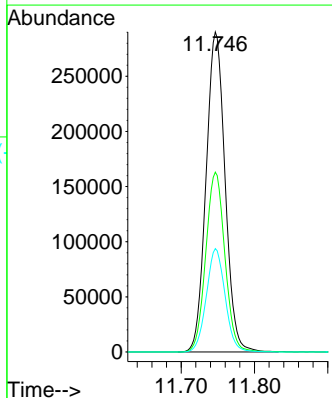
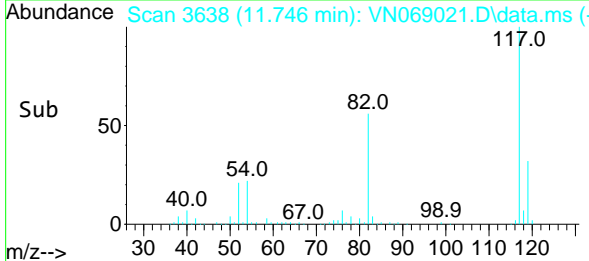


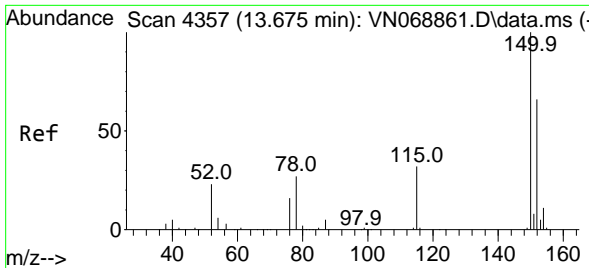
#63
 Chlorobenzene-d5
 Concen: 50.000 ug/l
 RT: 11.746 min Scan# 3638
 Delta R.T. -0.000 min
 Lab File: VN069021.D
 Acq: 19 Oct 2021 13:01



Tgt Ion: 117 Resp: 522933

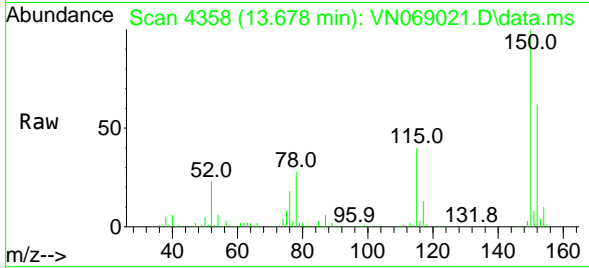
Ion	Ratio	Lower	Upper
117	100		
82	56.2	46.4	69.6
119	32.3	26.0	39.0



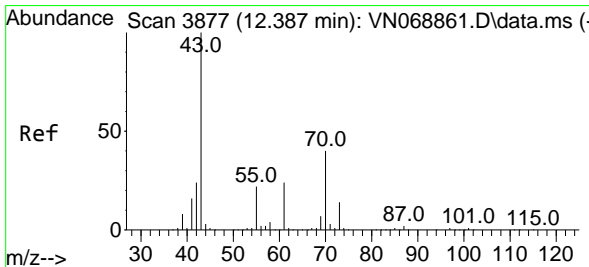
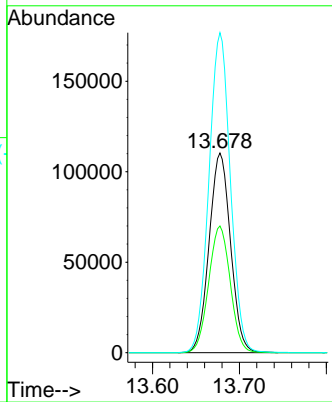
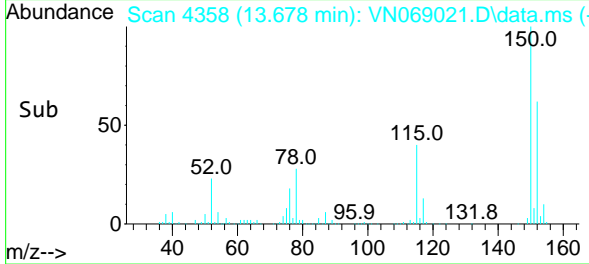


#72
 1,4-Dichlorobenzene-d4
 Concen: 50.000 ug/l
 RT: 13.678 min Scan# 4358
 Delta R.T. 0.003 min
 Lab File: VN069021.D
 Acq: 19 Oct 2021 13:01

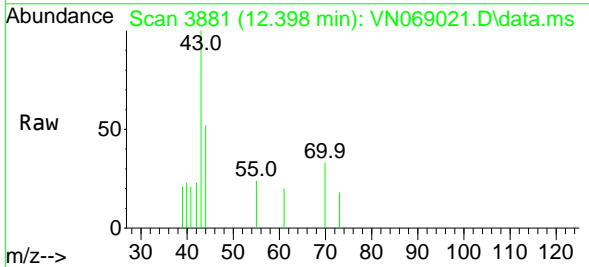
Instrument :
 MSVOA_N
 ClientSampled :



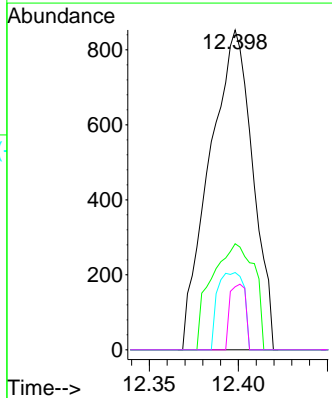
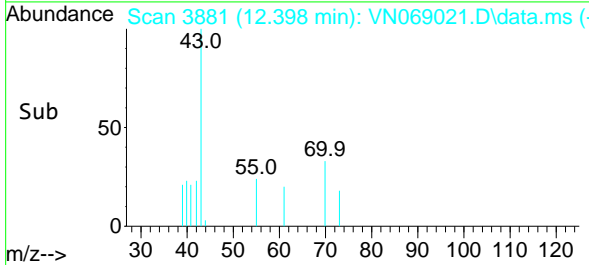
Tgt Ion:152 Resp: 189416
 Ion Ratio Lower Upper
 152 100
 115 63.8 31.4 94.3
 150 159.9 0.0 351.0

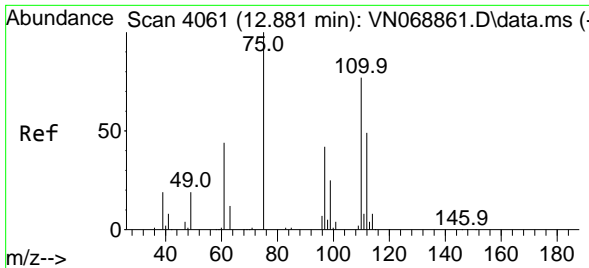


#74
 N-amy1 acetate
 Concen: 0.240 ug/l
 RT: 12.398 min Scan# 3881
 Delta R.T. 0.011 min
 Lab File: VN069021.D
 Acq: 19 Oct 2021 13:01



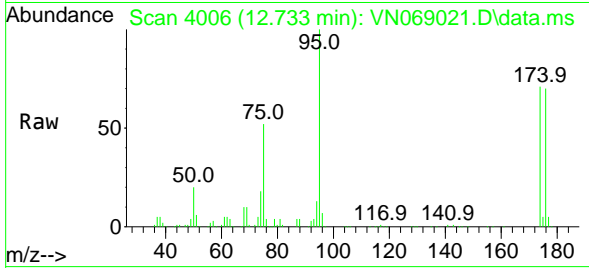
Tgt Ion: 43 Resp: 1436
 Ion Ratio Lower Upper
 43 100
 70 32.7 32.2 48.2
 55 14.7 18.0 27.0#
 61 7.5 19.0 28.4#



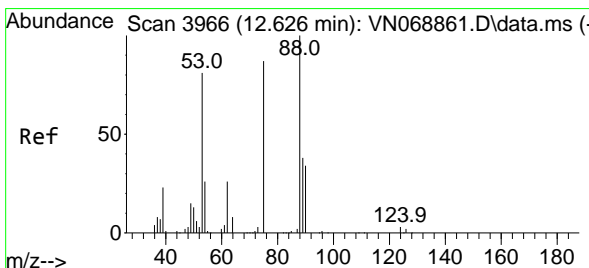
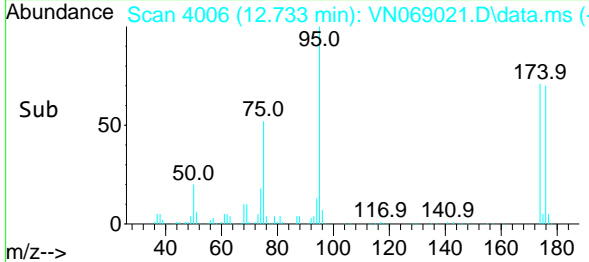
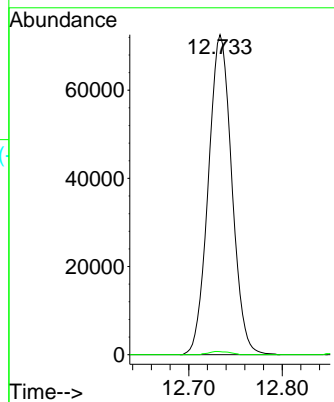


#76
 1,2,3-Trichloropropane
 Concen: 31.400 ug/l
 RT: 12.733 min Scan# 4006
 Delta R.T. -0.148 min
 Lab File: VN069021.D
 Acq: 19 Oct 2021 13:01

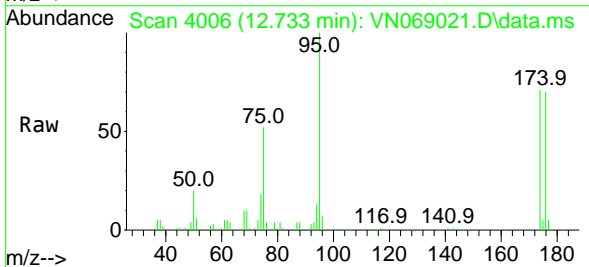
Instrument :
 MSVOA_N
 ClientSampled :



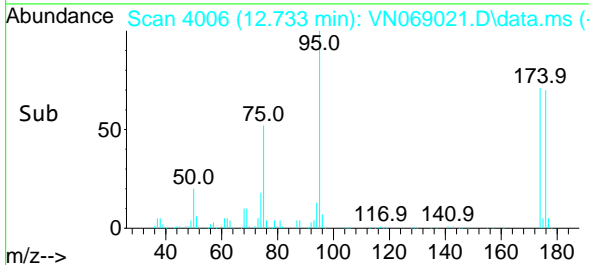
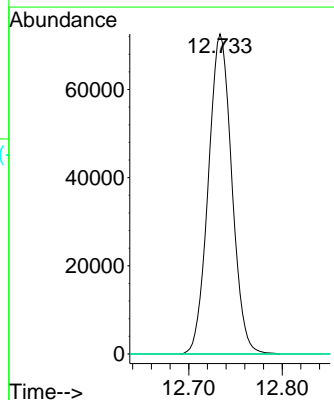
Tgt Ion: 75 Resp: 126550
 Ion Ratio Lower Upper
 75 100
 77 0.9 96.2 288.4#

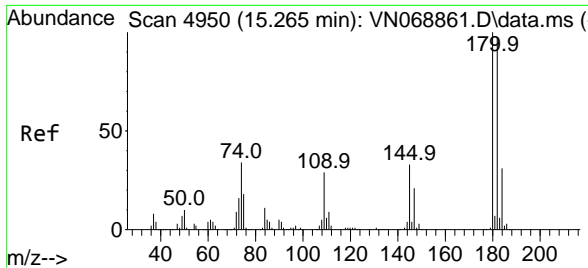


#81
 trans-1,4-Dichloro-2-butene
 Concen: 75.123 ug/l
 RT: 12.733 min Scan# 4006
 Delta R.T. 0.107 min
 Lab File: VN069021.D
 Acq: 19 Oct 2021 13:01



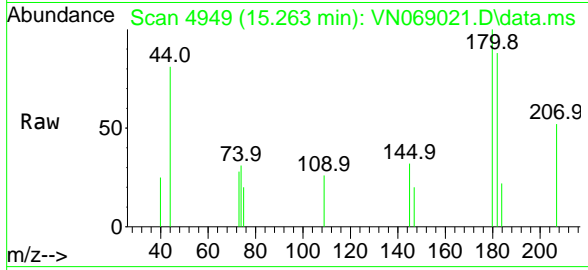
Tgt Ion: 75 Resp: 126550
 Ion Ratio Lower Upper
 75 100
 53 0.0 75.4 113.2#
 89 0.0 36.9 55.3#





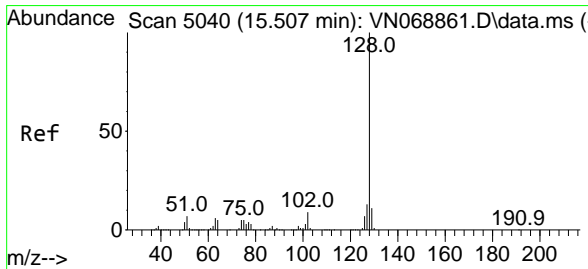
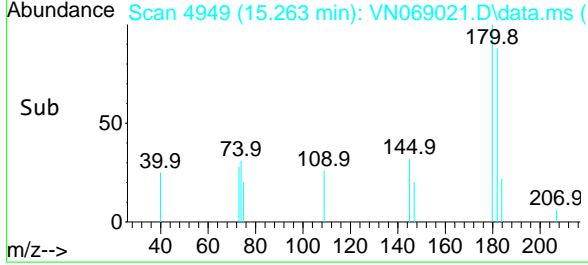
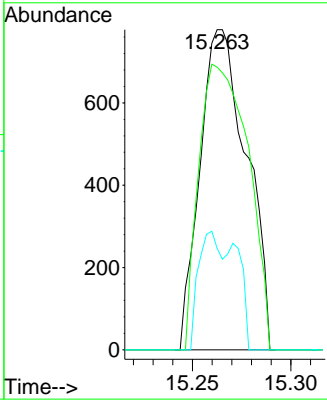
#93
 1,2,4-Trichlorobenzene
 Concen: 2.983 ug/l
 RT: 15.263 min Scan# 4949
 Delta R.T. -0.002 min
 Lab File: VN069021.D
 Acq: 19 Oct 2021 13:01

Instrument :
 MSVOA_N
 ClientSampled :

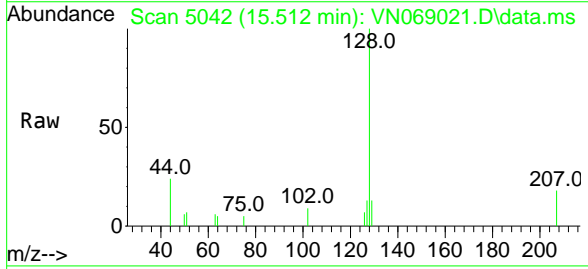


Tgt Ion:180 Resp: 1280

Ion	Ratio	Lower	Upper
180	100		
182	94.4	47.9	143.7
145	18.1	16.4	49.2

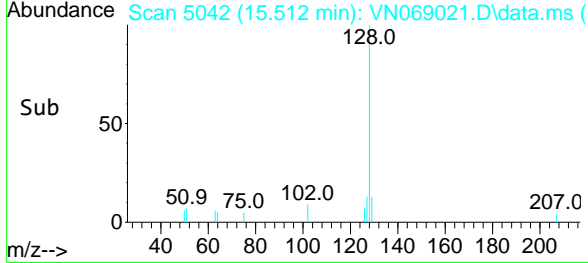
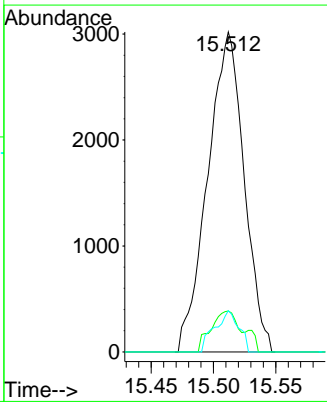


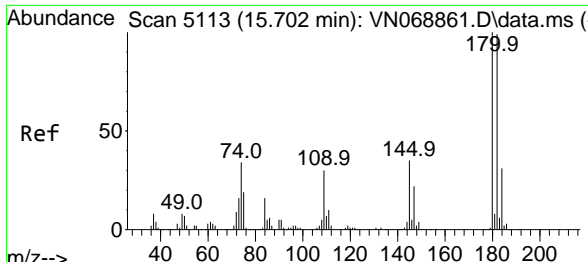
#95
 Naphthalene
 Concen: 4.456 ug/l
 RT: 15.512 min Scan# 5042
 Delta R.T. 0.005 min
 Lab File: VN069021.D
 Acq: 19 Oct 2021 13:01



Tgt Ion:128 Resp: 6129

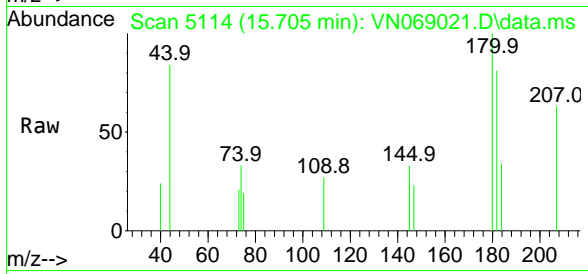
Ion	Ratio	Lower	Upper
128	100		
127	9.8	10.5	15.7#
129	8.5	8.9	13.3#





#96
 1,2,3-Trichlorobenzene
 Concen: 3.000 ug/l
 RT: 15.705 min Scan# 5114
 Delta R.T. 0.003 min
 Lab File: VN069021.D
 Acq: 19 Oct 2021 13:01

Instrument :
 MSVOA_N
 ClientSampled :



Tgt Ion:180 Resp: 1549

Ion	Ratio	Lower	Upper
180	100		
182	88.6	48.1	144.3
145	28.9	17.4	52.2

